

Special Article

Pathologic Effects of Chronic Halothane Inhalation:

An Overview

Louis W. Chang, Ph.D., and Jordan Katz, M.D.

RECENTLY, an American Society of Anesthesiology-sponsored survey of the effects of the operating room environment on personnel suggested that chronic exposure to trace amounts of anesthetic in the ambient air might constitute a potential hazard.¹ The report of the Ad Hoc Committee complemented other animal and human studies suggesting that prolonged exposure was related to increased incidences of cancer, hepatic disease, spontaneous abortion, and congenital abnormalities.²⁻⁹ These reports supplement existing concerns of possible toxic effects of acute exposure to a variety of anesthetics.

Perhaps the most extensive studies of possible toxicity concern halothane and the liver. Hepatitis following exposure to halothane has been reported frequently.¹⁰⁻²¹ Possible etiologies have been reviewed by various investigators.²¹⁻²² Although there are suggestions to the contrary,²¹ halothane hepatitis has generally been accepted as a pathologic entity.²² In addition, recent studies have demonstrated that hepatic lesions similar to those found in man could be induced in rats²⁴⁻²⁷ and guinea pigs²⁸ after single or repeated exposures to halothane.

We have been studying the effects of chronic exposure to halothane in the rat, with particular emphasis on ultrastructural alterations of three organs—the liver, kidney, and brain. Results indicate that the morphologic

changes that occur mimic toxic changes caused by other cytogenic substances such as carbon tetrachloride.

This review collates our results with findings reported by others and presents, we feel, a strong case for the toxic potential of halothane. For detailed information concerning individual experimental designs and findings, we refer to the original articles.

Pathologic Effects on the Liver

EFFECTS OF ANESTHETIC CONCENTRATION

Because of the controversy concerning halothane and hepatic necrosis, a pathology panel was formed as a part of the National Halothane Study (conducted by the National Academy of Sciences-National Research Council) to investigate the pathology of "halothane hepatitis."²⁹ It was found that the hepatic necrosis had no consistent pattern, varying from minor focal lesions with either random or regular zonal distribution to total parenchymal destruction. In some instances the necrosis tended to occur in the vicinity of the centrilobular vein. Ultrastructural studies of hepatitis induced by acute exposure to halothane have been performed in both man and animals.³⁰⁻³⁷ The general pathologic changes consist of swelling and necrosis of the liver cells, especially in the central zones, with inflammatory infiltrates. The cells appeared dark and shrunken in some areas, swollen and pale in others. Active parenchymal hepatitis with foci of hepatocellular necrosis, alterations in cytoplasmic reticulum and bile canaliculi, mitochondrial changes, and myelin-figure formation have been found.

Received from the Departments of Pathology and Anesthesiology, University of Wisconsin, Madison, Wisconsin 53706. Accepted for publication June 15, 1976. Supported by Public Health Service Grant #GM22685.

Address reprint requests to Dr. L. W. Chang (Department of Pathology).

EFFECTS OF SUBANESTHETIC CONCENTRATIONS

In a recent study, Stevens *et al.* compared the toxicities of halothane, isoflurane, and diethyl ether at subanesthetic concentrations in mice, rats, and guinea pigs.²⁸ It was found that after 35 days of exposure, halothane produced a greater decrement in weight gain and a higher incidence of hepatic degenerative changes than the other agents. In our laboratories, using electron microscopy, we demonstrated cellular changes (such as degeneration of the mitochondria, endoplasmic reticulum, and bile canaliculi) (figs. 1 and 2) in the livers of rats exposed to subclinical levels of halothane, 10–500 ppm, for four to eight weeks.²⁹ In general, more extensive lesions were found in animals exposed to higher concentrations of halothane. Additionally, pregnant rats were exposed to halothane, 10 ppm, throughout gestation and degenerative changes (such as fatty change, leukocytic infiltration, accumulation of lysosomes, and cellular necrosis) were observed in the livers of the offspring (figs. 3 and 4).²⁹

Despite increasing evidence that halothane is hepatotoxic, the incidence of fully recognizable hepatic necrosis in human subjects following halothane anesthesia is very low.³⁰ However, Stevens *et al.* cautioned that perhaps hepatic injury following halothane anesthesia in man is not so rare as the incidence of massive hepatitis would suggest. Elevations of SGPT and BSP retention have been found following halothane anesthesia,^{31,32} suggesting that a mild hepatic injury following exposure to halothane may not be uncommon.

At least two explanations have been suggested for the hepatotoxic effects of halothane. Since granuloma formation and eosinophilia are sometimes associated with halothane hepatitis, hypersensitivity may underlie the pathogenic mechanism.^{33–39} A sensitivity phenomenon of the antibody–antigen type could occur if a haptene is formed by conjugation of hepatic protein to the halothane molecule, or a metabolite of it. However, increasing evidence has indicated that halothane, or its metabolite, probably has a direct hepatotoxic effect on the liver. Damage to liver cells following exposure to halothane in dogs,²⁰ mice,^{38,51} guinea pigs,^{28,46} and rats^{24,26,28,29,52}

has been reported. As is the case with the volatile anesthetic chloroform and other halogenated compounds such as carbon tetrachloride, there may be a toxic metabolite that accumulates within biological tissues.^{24,54} Cohen and Hood reported accumulations of metabolites from various volatile anesthetics in the mouse, but these metabolites could not be identified because they were bound to tissue constituents from which they could not be extracted.^{54,55}

Of interest is the fact that halothane metabolism is apparently concentration-dependent.⁵⁶ More metabolism and breakdown of halothane occurred in the livers of animals exposed to lower concentrations of the agent. If the metabolites of halothane are responsible for hepatic damage, chronic exposure to low levels of halothane might then be more toxic than acute exposures.

Pathologic Effects on the Kidney

Methoxyflurane is now known to be nephrotoxic in clinical concentrations.^{37–41} There is no evidence that halothane has a similar effect. Raventos,⁶² in his classic paper in 1956, reported that some elements of renal damage, primarily dilatation of the proximal convoluted tubules, did occur when animals were subjected to repeated exposures to halothane. In our laboratory we studied the renal morphologic changes following chronic exposure to subanesthetic concentrations of 10 and 500 ppm halothane by light and electron microscopy.⁶³ In adult rats lesions were demonstrated in the proximal convoluted tubules. Degeneration of the mitochondria with formation of large membranous bodies was frequently found (fig. 5). Accumulation and fusion of lysosomes were also observed in the tubular epithelial cells (fig. 6). Similar changes in the lysosomes have been reported to occur in methoxyflurane nephropathy,³⁸ choline-deficient rats,⁶⁴ manganese-deficient mice,⁶⁵ and the Chediak-Higashi syndrome.⁶⁶ It has been proposed that these abnormal lysosomal structures are directly related to alternations in lysosomal function.⁶⁶

In addition to the mitochondrial and lysosomal changes, accumulation of spherical particles in the basement membrane (fig. 7), ex-

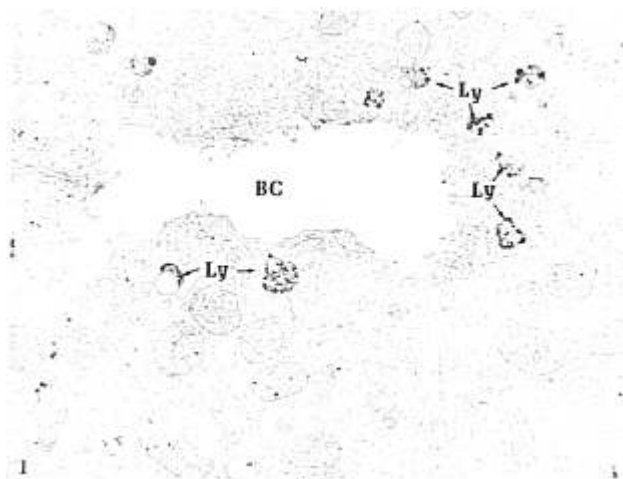


FIG. 1. Liver, adult rat, 500 ppm halothane, 4 weeks. Extensive dilatation of the bile canaliculi (BC) with peribiliary accumulation of lysosome (Ly), indicating cellular injury. Similar ultrastructural changes have been observed in human cases of halothane hepatitis. $\times 14,500$.

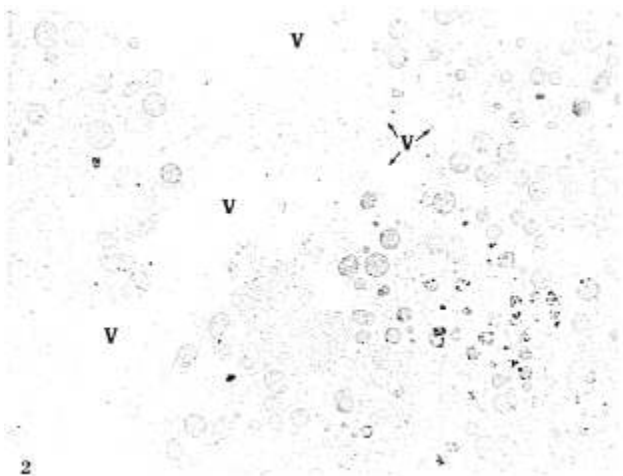


FIG. 2. Liver, adult rat, 500 ppm halothane, 4 weeks. Vacuolar degeneration of the endoplasmic reticulum to form membrane-bound vacuoles (V). $\times 7,000$.

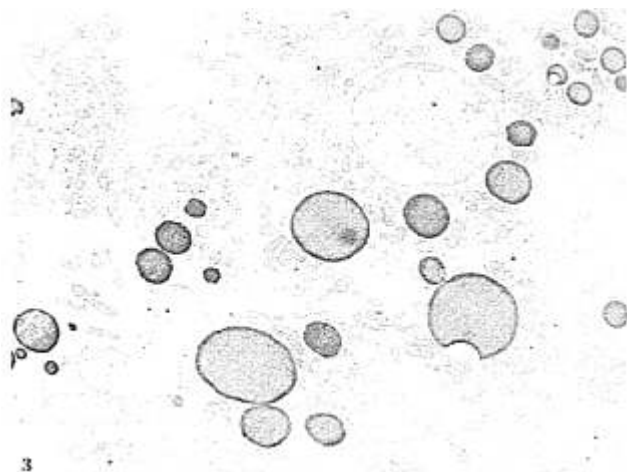


FIG. 3. Liver, neonatal rat, 10 ppm halothane throughout gestation. Extensive accumulation of lipid droplets (fatty change) within some hepatocytes. $\times 5,000$.

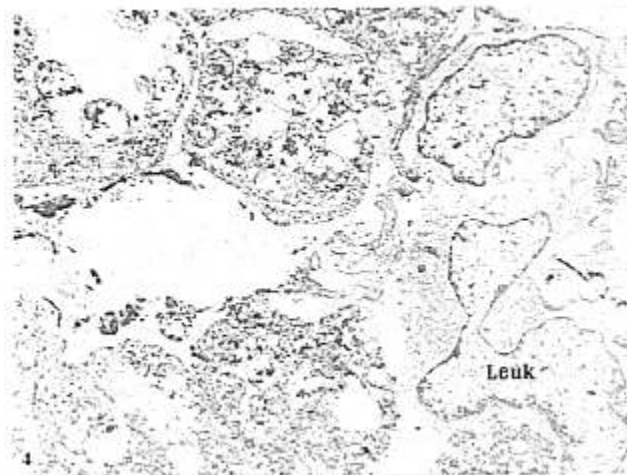


FIG. 4. Liver, neonatal rat, 10 ppm halothane throughout gestation. Large areas of necrosis were observed in the liver. Infiltration of leukocytes (Leuk) at necrotic sites was prominent. $\times 12,500$.

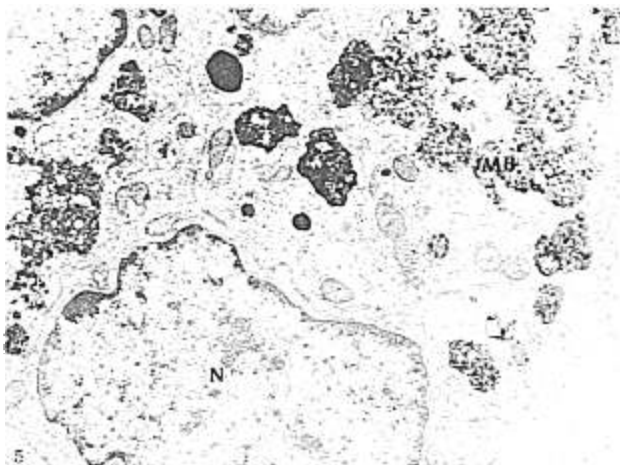


FIG. 5. Proximal convoluted tubule, adult rat kidney, 500 ppm halothane. Accumulation of membranous bodies (MB) within the epithelial cell. The membranous bodies are believed to be derived from degenerative mitochondria. $\times 14,500$.

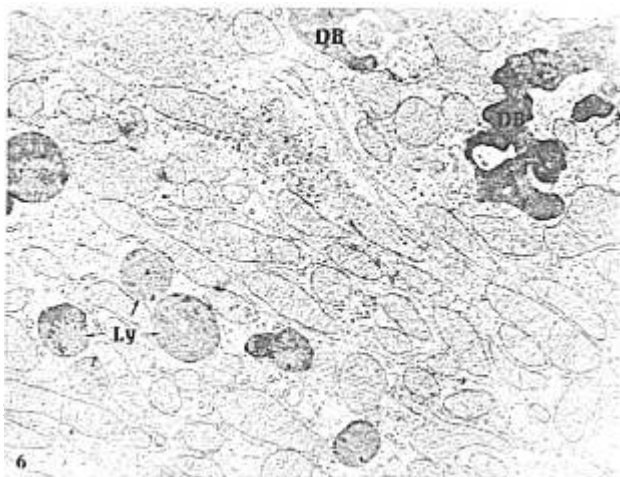


FIG. 6. Proximal convoluted tubules, adult rat kidney, 500 ppm halothane. Fusion of the lysosomes (Ly) to form irregular-shaped dense bodies (DB). $\times 14,500$.

trusion of large cytoplasmic masses into the tubular lumen, aggregation of smooth endoplasmic reticulum, and swirling of the basal plasma membrane were observed in the proximal tubules (fig. 7). The clusters of spherical microparticles within the basement membrane, as well as the extrusion of cytoplasmic material, have been found in both human and animal kidneys affected by disease.⁶⁷⁻⁷⁰ It is believed that these phenomena represent discharge and extrusion of cellular debris and material from injured cells. The formation of smooth endoplasmic reticulum aggregates and the swirling of basal plasma membrane, however, may represent a compensatory response of the kidney, since the basal plasma membrane is involved in detoxification processes and transport of the end products into the tubular lumen. The swirling found in our animals' basal plasma membranes indicates a probable compensatory response of the membranes to halothane metabolites.⁷¹

Chang and co-workers also found pathologic changes in neonatal kidneys of rats subjected to intrauterine exposure to low levels of halothane (10 ppm).⁷² General degenerative changes such as mitochondrial swelling (fig. 8), accumulation of lysosomes, and enlargement of the apical vacuoles (fig. 9) were observed. These degenerative changes were found to be confined to the proximal convoluted tubules. Massive cellular casts and cytoplasmic material were also found within the tubular lumen, indicating tubular injury (fig. 10).

The clear-cut nature of the morphologic alterations found in our laboratory following chronic exposure suggests that, at least in one species, halothane acts as a cellular toxin to the kidney. Whether such changes occur in man has not been determined.

Pathologic Effects on the Brain

Apparently no pathologic effect on the brain of acute exposure to clinical concentrations of anesthetics has been reported. However, there are suggestions in the literature that chronic exposure to subanesthetic concentrations may be deleterious to central nervous system function. Several reports from the European literature suggest that headaches and irritability in operating room personnel

and patients were caused by direct action of general anesthetics on the brain or cerebral vessels.^{5,6,71} Functional disturbances of the CNS, such as headaches and depression, were reported to occur in Russian anesthetists following prolonged exposure in poorly ventilated operating rooms.⁵ Many investigators have shown that acute exposure to subanesthetic concentrations produces temporary deficits in a variety of human behavioral functions, including memory, mood, and psychomotor actions.⁷⁵⁻⁷⁹

One of the authors showed a deterioration in psychological function of anesthesia residents from the start of their residency to the end of one year (Katz, unpublished observation). In a part of that study, the Reitan-Halstead test, a well-known measure of organic brain disorders, was marginally positive in several of the residents. Because of the many variables in that study, conclusions concerning cause and effect could not be drawn.

Our laboratory has repeated studies in a more controlled situation using the rat as a model.²⁰ We have shown that there was indeed a learning deficit in animals exposed *in utero* to 10 ppm halothane throughout gestation. The deficit continued many months past weaning and after the rats were out of the halothane environment, indicating that it was permanent.

We believe that the work done in this laboratory is the first to demonstrate morphologic changes in the brain as a result of exposure to low concentrations of halothane. In adult rats after four to eight weeks in an environment of 10 to 500 ppm halothane, degenerative changes such as severe vacuolation of the Golgi complex (fig. 11) and collapse of the rough endoplasmic reticulum (fig. 12) could be observed in some cortical neurons.²⁴ We have also found degenerative changes in the cortical neurons of neonatal rats exposed to halothane *in utero* at a level of 10 ppm in the ambient air throughout gestation.²² Vacuolation of the Golgi complex was again a prominent pathologic feature. Weakening and focal disruption of the neuronal nuclear membrane (fig. 13) was a frequent finding. Such changes in the nuclear membrane are precursors of cell death. Accumulation of cytoplasmic debris and lysosomes could still be observed within

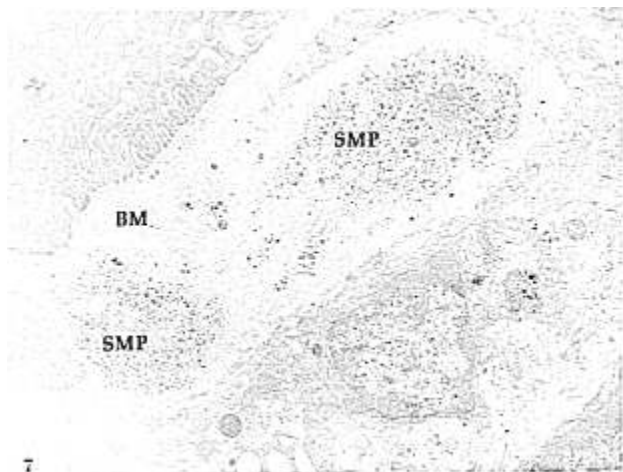


FIG. 7. Kidney, adult rat, 500 ppm halothane. Accumulation of spherical microparticles (SMP) in a pocket of the basement membrane (BM). The SMP's are probably cellular debris being extruded into the basement membrane. $\times 10,500$.

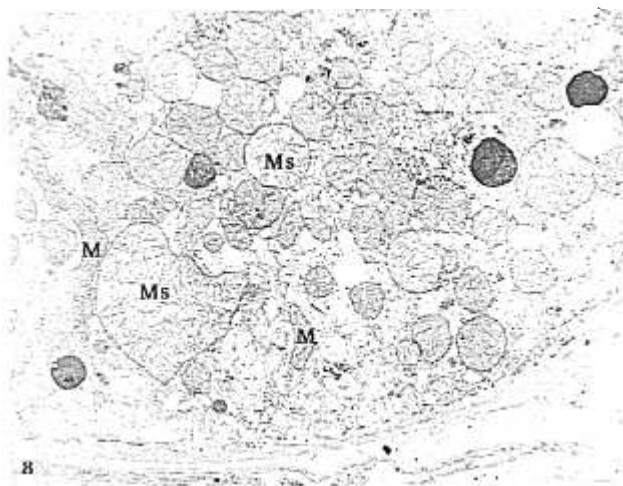


FIG. 8. Proximal convoluted tubule, neonatal rat kidney, 10 ppm halothane throughout gestation. Severe swelling of some of the mitochondria (Ms) in the renal epithelial cells, indicating cellular injury. Some mitochondria (M) still appeared normal. $\times 10,500$.

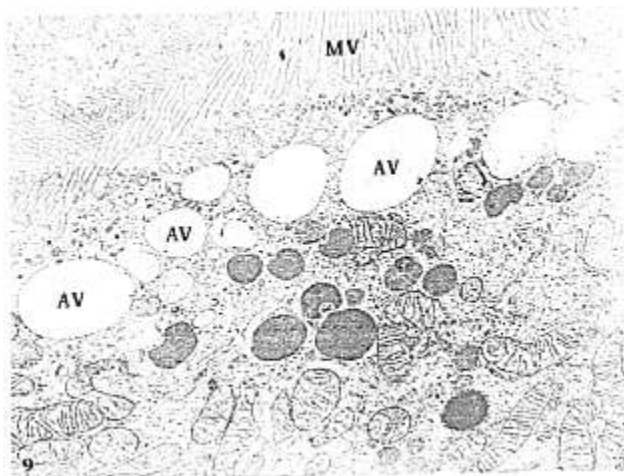


FIG. 9. Proximal convoluted tubule, neonatal rat kidney, 10 ppm halothane throughout gestation. Enlargement of the apical vacuoles (AV) forming membrane-limited vacuolations. Microvilli (MV). $\times 14,500$.

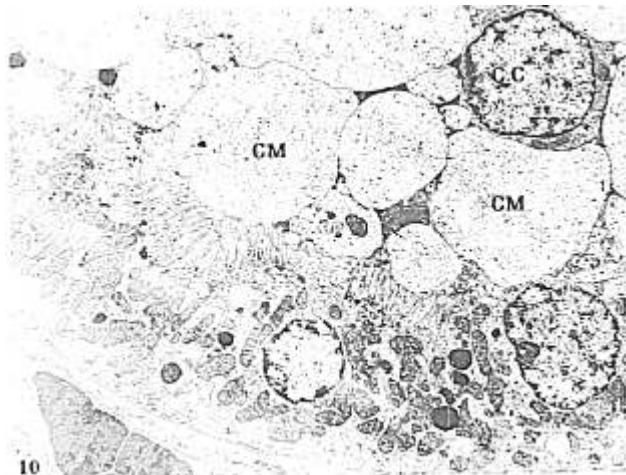


FIG. 10. Proximal convoluted tubule, neonatal rat kidney, 10 ppm halothane throughout gestation. Degenerated cellular cast (CC) and cytoplasmic masses (CM) were being extruded into the tubular lumen. $\times 5,000$.

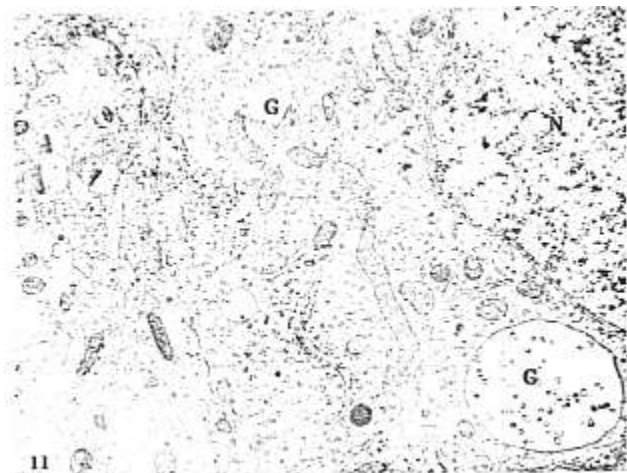


FIG. 11. Cortical neuron, adult rat, 500 ppm halothane. Degeneration and vacuolation of the Golgi complex (G). Nucleus (N). $\times 22,000$.

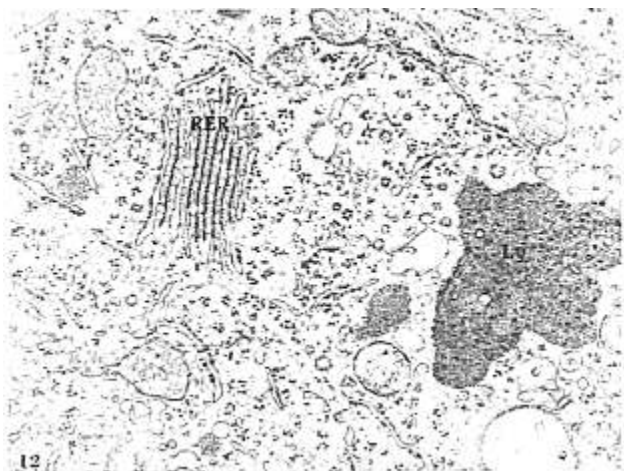


FIG. 12. Cerebral cortex, adult rat, 10 ppm halothane. Collapse of the rough endoplasmic reticulum (RER) was observed within some neurons. A dense matrical material was found between the stacks of collapsed reticular membranes, which became devoid of ribosomes. A giant lysosome (Ly) is also evident. $\times 41,000$.

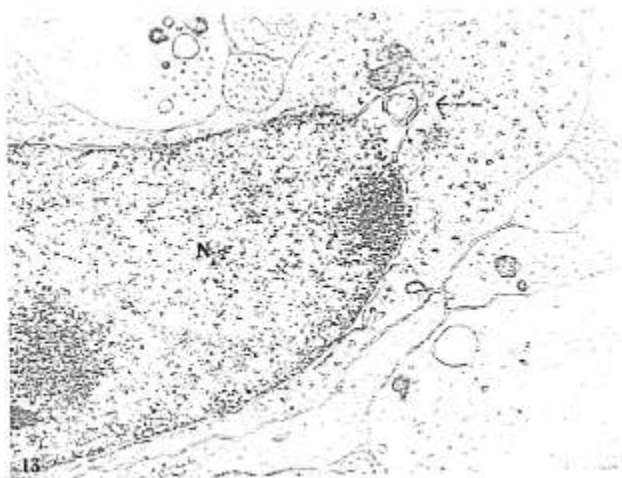


FIG. 13. Cerebral cortex, neonatal rat, 10 ppm halothane throughout gestation. Weakening and focal outpouching of the nuclear envelope (--->) could be observed in many neurons (N). $\times 30,500$.

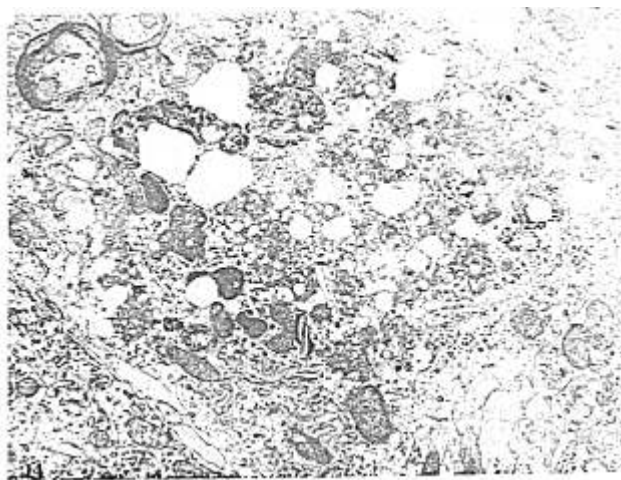


FIG. 14. Cerebral cortex, neonatal rat, 10 ppm halothane throughout gestation. Accumulation of lipids, lysosomes, and cellular debris within a neuronal process. $\times 20,000$.

some neuronal processes and macrophages (fig. 14) in 100-day-old rats that had been subjected to prenatal exposure to halothane, indicating that the damage to the nerve cells in these animals by halothane or its metabolite is an enduring one.²² These findings support the concept that halothane may have an undesirable effect on the developing nervous system of the rat. Whether such occurs in other species, including man, has not been determined.

Concluding Remarks

We have reviewed both clinical and laboratory data suggesting that acute or chronic exposure to general anesthetics, primarily halothane, has deleterious effects on at least three organs—the liver, kidney, and brain. The present review represents only a general overview and an up-to-date summary of the morphologic and pathologic changes in the rat following exposure to halothane.

Since the pathologic effects of halothane have been revealed by electron microscopy only recently, the precise "pathogenic mechanism" of halothane or its metabolites still needs to be investigated and cannot be determined at the present time. However, in view of the pathologic involvement of the cyto-membrane systems (plasma membrane, mitochondria, nuclear membrane, endoplasmic reticulum, and Golgi complex) after exposure to halothane, it is not unreasonable to postulate that the prime toxic effect of halothane (or its metabolites) is on the biological membranes.

Most of the information in the present review concerning the pathologic effects of halothane is derived from studies in our laboratories. The experimental animals were exposed to 10 and 500 ppm halothane for four to eight weeks in carefully monitored chambers, while the control animals were housed in halothane-free chambers. All the animals were sacrificed by intracardial perfusion with glutaraldehyde to ensure proper and immediate preservation of the tissue and cellular morphology. Tissue samples from the cerebral cortex, renal cortex, and liver were then carefully obtained with a sharp blade and further fixed in proper fixatives for light and electron microscopy. Lesions we have found

in specimens of brain, liver and kidney represent very subtle pathologic changes in the tissues, because most of them are observable only with electron microscopy and not with light microscopy. However, we are confident that our findings are valid because they are readily observable and are consistent more than in 85 per cent of the tissue samples examined. None of these abnormalities was observed in the tissues of the control animals. Moreover, we have reproduced our findings consistently in subsequent experiments, some performed under a "double-blind" system to ensure total objectivity.

There is no doubt that many of the findings reviewed in the present paper are still subject to critical debate. Nevertheless, from all the data and information obtained to date, indications that halothane or its metabolites may have a direct toxic effect on the biological system are strong. However, since all these observations were obtained from laboratory animals subjected to experimental conditions, direct extrapolation of these findings to man is not warranted.

Since the pathologic effects of other anesthetic agents were not comparatively studied, it cannot be assumed that the lesions obtained in response to halothane exposure are "specific" for halothane. The demonstration of a relationship between structural and functional changes in animals following exposure to halothane is still lacking, and this relationship needs to be investigated in future studies.

References

- Occupational Disease among Operating Room Personnel: A National Study, Ad Hoc Committee of the American Society of Anesthesiologists: *ANESTHESIOLOGY* 41:321-340, 1971
- Corbett TH, Ball GL: Chronic exposure to methoxyflurane: A possible occupational hazard to anesthesiologists. *ANESTHESIOLOGY* 34:532-537, 1971
- Smith BE, Gaub ML, Moya F: Investigation into the teratogenic effects of anesthetic agents: The fluorinated agents (abstr). *ANESTHESIOLOGY* 26:260-261, 1965
- Cohen EN, Bellville JW, Brown BW: Anesthesia, pregnancy and miscarriage: A study of operating room nurses and anesthesiologists. *ANESTHESIOLOGY* 35:343-347, 1971
- Vaisman AI: Working conditions in surgery and their effect on the health of anesthesiologists. *Eksp Khir Anesteziol* 3:44-49, 1967

6. Lenca L, Nemes CS, Berta L: Psychische Belastungen und Mobilität der Anästhetisten. Third European Anesthesiology Conference, Prague, 1970.
7. Corbett TH: Anesthetics as a cause of abortion. *Fertil Steril* 23:866-869, 1972
8. Corbett TH, Cornell RG, Endres JL, Millard RI: Effects of low concentrations of nitrous oxide on rat pregnancy. *ANESTHESIOLOGY* 39:299-301, 1973
9. Nikki P: Are anaesthetic gases harmful to operating theatre staff? (editorial). *Ann Clin Res* 4:247-249, 1972
10. Brody GL, Sweet RB: Halothane anesthesia as a possible cause of massive hepatic necrosis. *ANESTHESIOLOGY* 24:29-37, 1963
11. Bunker JP, Blumenfeld CM: Liver necrosis after halothane anesthesia. Cause or coincidence? *N Engl J Med* 268:525-534, 1963
12. Lindenbaum J, Leifer E: Hepatic necrosis associated with halothane anesthesia. *N Engl J Med* 268:525-530, 1963
13. Temple RL, Cote RA, Gorens SW: Massive hepatic necrosis following general anesthesia. *Anesth Analg (Cleve)* 41:586-592, 1962
14. Tornetta FJ, Taniaki HT: Halothane jaundice and hepatotoxicity. *JAMA* 184:658-660, 1963
15. Johnson CC: Hepatitis associated with halothane. *Northwest Med* 63:611-613, 1964
16. Keeri-Szanto M, LaFleur F: Postanesthetic liver complications in a general hospital. A statistical study. *Can Anaesth Soc J* 10: 531-535, 1963
17. Allen HL, Metcalf DW: A search for halothane liver complications. *Anesth Analg (Cleve)* 43:159-162, 1964
18. Henderson JC, Gordon RA: The incidence of postoperative jaundice with special reference to halothane. *Can Anaesth Soc J* 11:453-459, 1964
19. Green KG, Mungavin JM: Halothane and the liver, retrospective studies. *Roy Soc Med Proc* 57:311-314, 1964
20. Qizilbash A: Halothane hepatitis. *Can Med Assoc J* 108:171-177, 1973
21. Simpson BR, Strumin L, Walton B: Halothane hepatitis: Fact or fallacy. *Bull NY Acad Med* 49:708-721, 1973
22. Ngai SH: Hepatic effects of halothane—reviews of the literature. The National Halothane Study. Edited by Bunker JP, Forrest WH, Mosteller F, et al. National Institutes of Health and National Institute of General Medical Sciences, Bethesda, Md. 1969, pp 11-18
23. Carney FMT, Van Dyke RA: Halothane hepatitis—a critical review. *Anesth Analg (Cleve)* 51:135-160, 1972
24. Ross WT, Cardell RR: Effects of halothane on the ultrastructure of rat liver cells. *Am J Anat* 135:5-22, 1972
25. Chang LW, Dudley AW Jr, Katz J: Ultrastructural evidence of hepatic injuries by chronic exposure to low levels of halothane. *Am J Pathol* 74:103a-104a, 1974
26. Chang LW, Dudley AW Jr, Lee YK, et al: Ultrastructural studies of the hepatocytes following chronic exposure to low levels of halothane. *Exp Mol Pathol* 23:35-42, 1975
27. Sipes IG, Brown BR, Jr, et al: An animal model of hepatotoxicity associated with halothane anesthesia. *ANESTHESIOLOGY* 45:622-628, 1976
28. Hughes HC, Lang CM: Hepatic necrosis produced by repeated administration of halothane to guinea pigs. *ANESTHESIOLOGY* 35: 466-471, 1972
29. Gall E: Report of the pathology panel. National Halothane Study. *ANESTHESIOLOGY* 29:233-248, 1968
30. Smuckler EA, Bombeck CT, Nyhus LM: Structural and functional changes in the isolated perfused liver associated with halothane and chloroform. Baltimore, Williams and Wilkins, 1967, pp 176-185
31. Inamoto A, Okamoto T, Matsuo Y: Electron microscopic investigation of the hepatotoxic effects following the repeated use of various inhalation anesthetic agents. *Prog Anesth Proc World Congr Anesth (London)*, 1968, pp 913-915
32. Corssen G: Cytotoxic effects of halogenated anesthetics. *Toxicity of Anesthetics*. Edited by Fink BR, Baltimore, Williams and Wilkins, 1968, pp 50-185
33. Kilian FM, Schaffner F, Popper H: Hepatitis after exposure to halothane. *Ann Intern Med* 71:467-477, 1969
34. Schaffner F, Paronetto F: Immunologic observations and electron microscopy of halothane-induced hepatic injury. *Immunology of the Liver*. Edited by Smith M and Williams R Philadelphia, F. A. Davis, 1970, pp 186-190
35. Keeley AF, Trey C, Marcon N, et al: Anticardiolipin hepatitis: Histologic and ultrastructural lesions associated with postoperative fever in two patients. *Gastroenterology* 58:965, 1970
36. Uzumalimoglu B, Yardley J, Boitnott J: The liver in mild halothane hepatitis. *Am J Pathol* 61:457-470, 1970
37. Schatzler PF, Kay S, McGavie JD: Ultrastructural pathology of a case of halothane hepatitis. *Am J Dig Dis* 18:905-911, 1973
38. Stevens WC, Eger EI II, White A, et al: Comparative toxicities of halothane, isoflurane and diethyl ether at subanesthetic concentrations in laboratory animals. *ANESTHESIOLOGY* 42:408-419, 1975
39. Chang LW, Lee YK, Dudley AW Jr, et al: Ultrastructural evidence of hepatic lesions in neonatal rats following chronic exposure to halothane. *Can Anaesth Soc J* 22:330-338, 1975
40. Bunker JP, Forrest WH, Mosteller F, et al (editors): The National Halothane Anesthesia and Post-operative Hepatic Necrosis Study.

Downloaded from <http://pubs.asahq.org/anesthesiology/article-pdf/45/6/640/2974030000542-197612000-00009.pdf> by guest on 08 August 2022

- Bethesda, Md., U.S. Government Printing Office, 1969
41. Thompson DF, Griefenstein FE: Enzyme patterns reflecting hepatic response to anesthesia and operation. *South Med J* 67:69-74, 1975
 42. Akdikmen SA, Flanagan TV, Landmesser CM: A comparative study of serum glutamic pyruvic transaminase changes following anesthesia with halothane, methoxyflurane and other inhalation agents. *Anesth Analg (Cleve)* 45: 819-815, 1966
 43. Belfrage S, Ahlgreen I, Axelson S: Halothane hepatitis in anesthetists. *Lancet* 2:1466-1467, 1966
 44. Mathieu A, DiPadua D, Mills J: Experimental immunity to a metabolite of halothane and fluroxene: Cutaneous delayed hypersensitivity. *ANESTHESIOLOGY* 40:385-390, 1974
 45. Rodriguez M, Paronetto F, Schaffner F, et al: Antimitochondrial antibodies in jaundice following drug administration. *JAMA* 208:148-150, 1969
 46. Dorval E, Glagov S, Orlando R, et al: Fatal halothane hepatitis with transient granulomas. *N Engl J Med* 283:357-359, 1970
 47. Doniach D: Cell mediated immunity to halothane hypersensitivity. *N Engl J Med* 283: 315-316, 1970
 48. Paronetto F, Popper H: Lymphocyte stimulation induced by halothane in patients with hepatitis following exposure to halothane. *N Engl J Med* 238:277-280, 1970
 49. Sherlock S: Progress report: Halothane hepatitis. *Gut* 12:324-329, 1971
 50. Stephen CR, Margolis G, Fabia LW: Laboratory observation with Fluothane. *ANESTHESIOLOGY* 19:770-776, 1958
 51. Jones WM, Margolis G, Stephen CR: Hepatotoxicity of inhalation anesthetic drugs. *ANESTHESIOLOGY* 19:715-723, 1958
 52. Scholler V: Electron microscopic and autoradiographic studies on the effects of halothane and chloroform in liver cells. *Acta Anaesthesiol Scand suppl* 32:1-62, 1968
 53. Van Dyke RA: Biotransformation of volatile anesthetics with special emphasis on the role of metabolism in the toxicity of anesthetics. *Can Anesth Soc J* 20:21-23, 1973.
 54. Cohen EN, Hood N: Application of low-temperature autoradiography to studies of the uptake and metabolism of volatile anesthetics in the mouse. I Chloroform. *ANESTHESIOLOGY* 30:306-317, 1969
 55. Cohen EN, Hood N: Application of low-temperature autoradiography to studies of the uptake and metabolism of volatile anesthetics in the mouse. II. Diethyl ether. *ANESTHESIOLOGY* 31:61-68, 1969
 56. Sawyer DC, Eger EI II, Bahlman SH, et al: Concentration dependence of hepatic halothane metabolism. *ANESTHESIOLOGY* 34:230-235, 1971
 57. Taves DR, Fry RW, Freeman RB: Toxicity following methoxyflurane anesthesia. II. Fluoride concentration in nephrotoxicity. *JAMA* 214:91-95, 1970
 58. Kosek TC, Mazze RI, Cousins MF: The morphology and pathogenesis of nephrotoxicity following methoxyflurane (Penthrane) anesthesia—an experimental model in rats. *Lab Invest* 27:575-580, 1972
 59. Mazze RI, Cousins RJ: Renal toxicity of anesthetics: With specific reference to the nephrotoxicity of methoxyflurane. *Can Anaesth Soc J* 20:64-80, 1973
 60. Mazze RI, Cousins MJ, Kosek JC: Dose-related methoxyflurane nephrotoxicity in rats: A biochemical and pathologic correlation. *ANESTHESIOLOGY* 36:571-587, 1972
 61. Mazze RI, Trudell JR, Cousins MJ: Methoxyflurane metabolism and renal dysfunction: Clinical correlation in man. *ANESTHESIOLOGY* 35:247-252, 1971
 62. Raventos J: Action of fluothane: A new volatile anesthetic. *Br J Pharmacol* 11:394-398, 1956
 63. Chang LW, Dudley AW Jr, Lee YK, et al: Ultrastructural changes in the kidney following chronic exposure to low levels of halothane. *Am J Pathol* 78:225-242, 1975
 64. Newberne PM, Bresnahan MR, Kula N: Effect of two synthetic antioxidants, vitamin E and ascorbic acid, on the choline-deficient rat. *J Nutr* 97:219-227, 1969
 65. Bell LT, Hurley LS: Ultrastructural effects of manganese deficiency in liver, heart, kidney, and pancreas of mice. *Lab Invest* 29:723-736, 1973
 66. Prieur DJ, Davis WC, Padgett GA: Defective function of renal lysosomes in mice with the Chediak-Higashi syndrome. *Am J Pathol* 67: 227-236, 1972
 67. Eriesson JLZ, Trump BF: Electron microscopy of the uriniferous tubules. *The Kidney* Volume 1, Edited by Rouiller C, Muller AF. New York, Academic Press, 1969, pp 351-447
 68. Burkholder PM, Hyman LR, Barber RA: Extracellular clusters of spherical microparticle in glomeruli in human renal glomerular disease. *Lab Invest* 28:415-425, 1973
 69. Chang LW, Sprecher JA: Pathological changes in the neonatal kidney following *in utero* exposure to methylmercury. *Environ Res* 11:392-406, 1976
 70. Ware RA, Burkholder PM, Chang LW: Ultrastructural changes in renal proximal tubule after chronic organic and inorganic mercury intoxication. *Environ Res* 10:121-140, 1975
 71. Andersen NB, Amaranath L: Anesthetic effect on transport across cell membranes. *ANESTHESIOLOGY* 39:126-152, 1973
 72. Chang LW, Dudley AW Jr, Lee YK, et al: Ultrastructural studies on the pathological changes in the neonatal kidney following *in utero* exposure to halothane. *Environ Res* 10:174-189, 1975

 Downloaded from <http://ajph.aphspublishers.org/> by guest on 08 August 2022

73. Bruce DL, Eide KA, Linde HW, et al: Causes of death among anesthesiologists: A 20-year survey. *ANESTHESIOLOGY*, 29:565-569, 1968
74. Tyrrell MF, Feldman SA: Headache following halothane anaesthesia. *Br J Anaesth* 40:99-105, 1968
75. Porter AL: An analytical review of the effects of non-hydrogen-bonding anesthetics on memory processing. *Behav Biol* 7:291-309, 1972
76. Adam N: Effects of general anesthetics on memory functions in man. *J Comp Physiol Psychol* 83:291-305, 1973
77. Mark RF, Watts ME: Drug inhibition of memory formation in chickens. I. Long-term memory. *Proc R Soc Lond* 178:439-454, 1971
78. Watts ME, Mark RF: Drug inhibition of memory formation in chickens. II. Short-term memory. *Proc R Soc Lond* 178:455-465, 1971
79. Steinberg H: Selective effects of an anesthetic drug on cognitive behavior. *Q J Exp Psychol* 6:170-180, 1954
80. Quimby KL, Aschkenase LJ, Bowman RD, et al: Enduring learning deficits and cerebral synaptic malformations from exposure to 10 ppm halothane. *Science* 185:625-627, 1974
81. Chang LW, Dudley AW Jr, Lee YK, et al: Ultrastructural changes in the nervous system after chronic exposure to low levels of halothane. *Exp Neurol* 45:209-219, 1974
82. Chang LW, Dudley AW Jr, Katz J: Pathological changes in the nervous system following *in utero* exposure to halothane. *Environ Res* 11:40-51, 1976

Cerebral Blood Flow and Metabolism

HYPOTENSION WITH TRIMETHAPHAN AND NITROPRUSSIDE In 14 unpremedicated dogs anesthesia was induced with thiopental (5 mg/kg) and maintained with ketamine (2 mg/kg). Muscular paralysis was achieved with pancuronium, the trachea intubated, and pulmonary ventilation maintained to keep $P_{a_{CO_2}}$ normal. Cerebral perfusion pressure (CPP) was reduced with either trimethaphan or sodium nitroprusside, and the effects of these drugs upon cerebral blood flow (CBF) and oxygen uptake (CMR_{O_2}) compared. Anesthesia alone altered neither CBF nor CMR_{O_2} . When nitroprusside decreased CPP to levels as low as 30 torr, cerebral autoregulation remained nearly intact and CBF was lowered by no more than 10-15 per cent. However, during administration of trimethaphan autoregulation was lost when CPP decreased below 60 torr. With values below this level, CBF progressively dimin-

ished as CPP decreased. The response of CMR_{O_2} was similar. A rate of infusion of trimethaphan sufficient to lower CPP below 50 torr resulted in decreased CMR_{O_2} ; when CPP was 30 torr, CMR_{O_2} was 35 per cent below normal. On the other hand, sodium nitroprusside produced no change in cerebral metabolism even when CPP was as low as 30 torr. The authors conclude that these differences in drug action may be of clinical significance. (Stoyka WW, Schutz H: *The Cerebral Response to Sodium Nitroprusside and Trimethaphan Controlled Hypotension*. *Canad Anaesth Soc J* 22: 275-283, 1975.)
ABSTRACTER'S COMMENT: Although major differences in the circulatory and metabolic effects of these drugs were seen at extremely low CPP, their effects were much more similar at the usual clinical ranges of induced hypotension.