

First Human Exposure to Org 25969

To the Editor:—We read with great interest the article by Dr. Gijsenbergh *et al.*¹ about the reversal of rocuronium-induced neuromuscular block by Org 25969. The described reversal mechanism is highly promising both for the clinical application and in research endeavors.

This being the first description of the pharmacokinetics of Org 25969, we hoped to reconstruct the time course of the plasma concentrations of Org 25969 using the provided data. Unfortunately, the combination of the pharmacokinetic parameters (tables 6 and 7) does not permit such a reconstruction, in part due to a nonstandard method of analysis. The authors do not mention whether an exponential equation or a compartmental model was fitted to the concentrations of Org 25969 in plasma. Was either approach even attempted? The terminal elimination half-life ($t_{1/2\beta}$) could be appropriate for either a biexponential or a triexponential equation. The reported values for the areas under the plasma concentration curves are, in concept, dose dependent, and the reported values apparently reflect this. Presumably, the authors used areas under the plasma concentration curves to justify the claim of “dose-linear pharmacokinetics,” but this was not explicitly stated in the text. The reported “volume of distribution during the terminal phase” (V_Z) is not routinely reported, and a comparison with the standard volumes, *i.e.*, the initial volume of distribution for a multiexponential equation (V_C), the volume of the central compartment in compartmental interpretation (V_1), or the volume of distribution at steady state (V_{SS}), is difficult if not impossible. Furthermore, because V_Z was evaluated from $V_Z = CL/-\beta$, V_Z is a function of $t_{1/2\beta}$ and, hence, provides no additional information. Of the routinely reported parameters, the authors provide only the estimates for the systemic clearance (CL) and the mean residence time. These two parameters do not suffice to reconstruct the time course of the plasma concentrations.

It would have been informative had the authors compared the doses of Org 25969 with the dose of rocuronium using molar units.

Anesthesiology 2006; 105:427

In Reply:—We appreciate the interest of Nigrovic *et al.* in our work. The pharmacokinetic parameters that are presented in our article¹ are the results of a noncompartmental pharmacokinetic analysis. The authors of the letter are looking for parameters of a pharmacokinetic modeling analysis and wonder whether such an approach was attempted. The answer is yes. In addition to the descriptive manner in which the pharmacokinetic data of this trial were presented in the article, the plasma concentration-time data of sugammadex (Org 25969) and rocuronium were also analyzed elaborately as part of a mechanism-based pharmacokinetic-pharmacodynamic modeling analysis. The model developed in the latter analysis describes not only the time course of plasma concentrations of sugammadex, rocuronium, and the complex formed between sugammadex and rocuronium, but also the resulting time course of neuromuscular block. The results of the development and validation of that model will be the subject of a separate publication.

The dose of rocuronium, 0.6 mg/kg, corresponds to approximately $1 \cdot 10^{-6}$ mol \cdot kg⁻¹. Given the molecular weight of Org 25969 of 2,000 Da,² the doses of Org 25969, 0.1 to 8.0 mg/kg, correspond to $(0.05$ to $4) \cdot 10^{-6}$ mol \cdot kg⁻¹. If one molecule of Org 25969 binds to one molecule of rocuronium and assuming that the whole dose of rocuronium is still present in the body 3 min after injection, then Org 25969 doses of less than $1 \cdot 10^{-6}$ mol \cdot kg⁻¹, corresponding to less than 2 mg/kg, would, on theoretical basis, have little chance to reverse the neuromuscular block completely. As documented by the authors, only the molar doses of Org 25969 higher than the molar dose of rocuronium produced the desired reversal. Therefore, Org 25969 doses of 4.0 and 8.0 mg/kg efficiently reversed the block (table 9); on the molar basis, the two doses are two and four times higher than the dose of rocuronium. The Org 25969 dose of 2 mg/kg is equimolar to that of rocuronium and produced only a marginal reversal of neuromuscular block. Consideration of the doses in molar terms strengthens the authors' conclusion and explains why lower doses of Org 25969 could not have produced the reversal (table 9).

Vladimir Nigrovic, M.D.,* Shashi B. Bhatt, M.D., Anton Amann, Ph.D. *Medical University of Ohio, Toledo, Ohio. vnigrovic@meduohio.edu

References

1. Gijsenbergh F, Ramael S, Houwing N, van Iersel T: First human exposure of Org 25969, a novel agent to reverse the action of rocuronium bromide. *ANESTHESIOLOGY* 2005; 103:695-703
2. Adam JM, Bennett DJ, Bom A, Clark JK, Feilden H, Hutchinson EJ, Palin R, Prosser A, Rees DC, Rosair GM, Stevenson D, Tarver GJ, Zhang MQ: Cyclodextrin-derived host molecules as reversal agents for the neuromuscular blocker rocuronium bromide: Synthesis and structure-activity relationships. *J Med Chem* 2002; 45:1806-16

(Accepted for publication February 22, 2006.)

© 2006 American Society of Anesthesiologists, Inc. Lippincott Williams & Wilkins, Inc.

With regard to the second point that was raised, we agree that it may have been informative from a scientific point of view to discuss the doses in molar units, but because in practice sugammadex is dosed in units of mg/kg, we believe that it is more appropriate to use that unit in publications.

Natalie Houwing, M.Sc.,* Francois Gijsenbergh, M.D., Steven Ramael, M.D., Thijs van Iersel, M.D. *Pharmerit BV, Rotterdam, The Netherlands. nhouwing@pharmerit.com

Reference

1. Gijsenbergh F, Ramael S, Houwing N, van Iersel T: First human exposure of Org 25969, a novel agent to reverse the action of rocuronium bromide. *ANESTHESIOLOGY* 2005; 103:695-703

(Accepted for publication February 22, 2006.)

Systemic Thromboses after Cardiopulmonary Bypass: Is It Thrombin or Antithrombin?

To the Editor:—We read with interest two case reports of fatal thrombotic complications after cardiopulmonary bypass.^{1,2} However, there are several unclear issues that the readers should become aware of. First, it is not clear whether adequate heparin levels were maintained during cardiopulmonary bypass (CPB) because activated clotting time (greater than 400–600 s*) does not necessarily reflect the efficacy of heparin anticoagulation.³

Heparin insensitivity due to antithrombin deficiency may be masked by thrombocytopenia, hypofibrinogenemia, or other coagulation factor defects. At our institution, we administer hourly bolus doses of 100 U/kg heparin during CPB to prevent the decrease of plasma heparin levels. Furthermore, we frequently replete antithrombin during prolonged CPB (approximately 3 h) in suspected antithrombin-deficient cases by adding fresh frozen plasma or antithrombin concentrate (Thrombate III®; Talecris Biotherapeutics, Research Triangle Park, NC). We have previously shown that reduced antithrombin levels greatly enhance the rate and peak level of thrombin generation.⁴ In patients with endocarditis, prolonged CPB, or both, plasma antithrombin levels may become critically low.⁵ Intravascular fluidity, however, may be maintained by the balance between low procoagulant (fibrinogen, platelet) and low anticoagulant levels (antithrombin, protein C and S, thrombomodulin). Under such conditions consistent with disseminated intravascular coagulopathy, one may observe bleeding tendency. In both cases that the authors described, the administration of hemostatic blood products, platelet concentrate,¹ and cryoprecipitate² after heparin reversal seemed to have triggered thrombotic complications. Rapid extensions of thrombi suggest that uncontrolled “thrombin generation” occurred, and it is questionable whether thrombi could have been quickly dissolved by endogenous fibrinolytic system even in the absence of aprotinin or other antifibrinolytic agents.⁶ In the case of afibrinogenemia referenced by the authors, it is possible that normal anticoagulant function and short CPB time (36 min) limited thrombus formation locally (*i.e.*, graft occlusion) without systemic thrombus extension.⁷

Dr. Tanaka is a former recipient of the Bayer Hemostasis Research Grant (West Haven, Connecticut).

* According to the aprotinin product insert, activated clotting time should be maintained at greater than 480 s (kaolin) or 750 s (celite). Heparin administration may be (1) fixed dosing (initial heparin > 350 U/kg plus supplemental dose(s) on CPB) or (2) heparin-protamine titration (Hepcon® system; Medtronic, Minneapolis, MN) to maintain heparin level above 2.7 U/ml.

In Reply:—I thank Drs. Tanaka and Sniecinski for their comments on our two reports of systemic thrombosis after cardiopulmonary bypass associated with aprotinin.^{1,2} They point out the possible role of antithrombin deficiency in these scenarios: This is applicable, given the settings of endocarditis, disseminated intravascular coagulation, and prolonged cardiopulmonary bypass.^{1,2} In the presence of antithrombin deficiency, overall thrombin production is increased.³ This thrombin excess could be a factor in the rapid development of systemic thrombosis described.^{1,2}

How do we integrate these observations into clinical practice? Clearly, we still lack adequate data to proceed. Bolus heparin therapy in the setting of aprotinin monitored with appropriate activated clotting time is an established standard for cardiopulmonary bypass, including deep hypothermic circulatory arrest, as the authors point out

To further stress the importance of adequate anticoagulation, the incidence of deep venous thromboses does not seem to be increased with intraoperative use of aprotinin in the orthopedic surgery when prophylaxis for deep venous thromboses (*e.g.*, low-molecular-weight heparin) is implemented.⁸ These two catastrophic cases highlight the importance of balancing procoagulant and anticoagulant components of coagulation to achieve localized hemostasis while avoiding thrombotic complications. Further clinical trials must be conducted to improve our current anticoagulant strategy.⁹

Kenichi A. Tanaka, M.D.† Roman Sniecinski, M.D. †Emory University School of Medicine, Atlanta, Georgia. kenichi.tanaka@emoryhealthcare.org

References

1. Augoustides JG, Lin J, Gambone AJ, Cheung AT: Fatal thrombosis in an adult after thoracoabdominal aneurysm repair with aprotinin and deep hypothermic circulatory arrest. *ANESTHESIOLOGY* 2005; 103:215–6
2. Augoustides JG, Kilbaugh T, Harris H, Glick JH, Acker M, Savino JS: Fatal thrombosis after mitral valve replacement for endocarditis: Aprotinin and disseminated intravascular coagulation (letter). *ANESTHESIOLOGY* 2006; 104:213
3. Despotis GJ, Joist JH, Hogue CW Jr, Alsoufi A, Kater K, Goodnough LT, Santoro SA, Spitznagel E, Rosenblum M, Lappas DG: The impact of heparin concentration and activated clotting time monitoring on blood conservation: A prospective, randomized evaluation in patients undergoing cardiac operation. *J Thorac Cardiovasc Surg* 1995; 110:46–54
4. Tanaka KA, Szlam F, Katori N, Sato N, Vega JD, Levy JH: The effects of argatroban on thrombin generation and hemostatic activation *in vitro*. *Anesth Analg* 2004; 99:1283–9
5. Heindel SW, Mill MR, Freid EB, Valley RD, White GC II, Norfleet EA: Fatal thrombosis associated with a hemi-Fontan procedure, heparin-protamine reversal, and aprotinin. *ANESTHESIOLOGY* 2001; 94:369–71
6. Fanashawe MP, Shore-Lesserson L, Reich DL: Two cases of fatal thrombosis after aminocaproic acid therapy and deep hypothermic circulatory arrest. *ANESTHESIOLOGY* 2001; 95:1525–7
7. Chun R, Poon MC, Haigh J, Seal D, Donahue B, Royston D: Case 1-2005: Cardiac surgery in congenital afibrinogenemia with thrombo-occlusive disease. *J Cardiothorac Vasc Anesth* 2005; 19:109–17
8. Shiga T, Wajima Z, Inoue T, Sakamoto A: Aprotinin in major orthopedic surgery: A systematic review of randomized controlled trials. *Anesth Analg* 2005; 101:1602–7
9. Avidan MS, Levy JH, Scholz J, Delphin E, Rosseel PM, Howie MB, Gratz I, Bush CR, Skubas N, Aldea GS, Licina M, Bonfiglio IJ, Kajdasz DK, Ott E, Despotis GJ: A phase III, double-blind, placebo-controlled, multicenter study on the efficacy of recombinant human antithrombin in heparin-resistant patients scheduled to undergo cardiac surgery necessitating cardiopulmonary bypass. *ANESTHESIOLOGY* 2005; 102:276–84

(Accepted for publication April 25, 2006.)

in their footnote. Furthermore, we have a large experience with this technique, including in deep hypothermic circulatory arrest.^{4–6} To my knowledge, there is no case report of this phenomenon with bolus heparin therapy titrated to heparin level. Of course, on the basis of case reports, no comparisons can be inferred between these two standards of care with respect to this kind of event.

Systemic thrombosis after cardiopulmonary bypass is very uncommon in the presence of standardized heparin therapy. It has also been reported in the pediatric population and in the presence of aminocaproic acid.^{7,8} A common feature in these reports is that the onset of thrombosis is shortly after heparin reversal with protamine, often in the setting of blood component transfusion to correct ongoing bleeding.

The exact etiology of this rare, but catastrophic event is probably

multifactorial, including genetic factors such as factor V Leiden.⁹ Antithrombin deficiency may be another factor in this multifactorial etiology. The role of aprotinin is still to be elucidated, because there is recent evidence of an association with thrombotic risk after cardiopulmonary bypass.¹⁰ This area of endeavor is limited not only by a rare incidence and complex etiology, but also by a lack of real-time objective coagulation monitoring data. This information would allow analysis of the coagulation/anticoagulation imbalance to localize the lesion and direct further inquiry.

The role of antithrombin deficiency should also be interpreted in light of the thrombin inhibitor. Until recently, heparin, an indirect thrombin inhibitor, was the main anticoagulant for cardiopulmonary bypass. This will certainly shift in the future, given the arrival of bivalirudin, a direct thrombin inhibitor, as a clinical alternative to heparin for cardiac surgery with and without cardiopulmonary bypass.^{11,12}

Drs. Tanaka and Sniecinski have correctly highlighted antithrombin deficiency as a possible component in the etiology of systemic thrombosis after cardiopulmonary bypass. The continuing incidence of these rare, but catastrophic cases highlights the clinical necessity for better data, perhaps in the form of an international registry. This would provide a platform for further clinical trials to refine our coagulation management of cardiopulmonary bypass and improve perioperative outcomes for our patients.

John G. T. Augoustides, M.D., F.A.S.E., Hospital of the University of Pennsylvania, Philadelphia, Pennsylvania. yiandoc@hotmail.com

References

1. Augoustides JG, Lin J, Gambone AJ, Cheung AT: Fatal thrombosis in an adult after thoracoabdominal aneurysm repair with aprotinin and deep hypothermic circulatory arrest. *ANESTHESIOLOGY* 2005; 103:215-6
2. Augoustides JG, Kilbaugh T, Harris H, Glick JH, Acker M, Savino JS: Fatal

thrombosis after mitral valve replacement for endocarditis: Aprotinin and disseminated intravascular coagulation (letter). *ANESTHESIOLOGY* 2006; 104:213

3. Tanaka KA, Szlam F, Katori N, Sato N, Vega JD, Levy JH: The effects of argatroban on thrombin generation and hemostatic activation *in vitro*. *Anesth Analg* 2004; 99:1283-9

4. Augoustides JG, Floyd TF, McGarvey M, Ochroch EA, Pochettino A, Fulford S, Gambone AJ, Weiner J, Raman S, Savino JS, Bavaria JE, Jobes DR: Major clinical outcomes in adults undergoing thoracic aortic surgery requiring deep hypothermic circulatory arrest: Quantification of organ-based perioperative outcome and detection of opportunities for perioperative intervention. *J Cardiothorac Vasc Anesth* 2005; 19:446-52

5. Appoo JJ, Augoustides JG, Pochettino A, Savino JS, McGarvey M, Cowie D, Gambone AJ, Harris H, Cheung AT, Bavaria JE: Perioperative outcome in adults undergoing elective deep hypothermic circulatory arrest with retrograde cerebral perfusion in proximal aortic arch repair: Evaluation of protocol-based care. *J Cardiothorac Vasc Anesth* 2006; 20:3-7

6. Augoustides JG, Pochettino A, Ochroch EA, Cowie D, McGarvey ML, Weiner J, Gambone AJ, Pinchasi D, Cheung AT, Bavaria JE: Clinical predictors for prolonged intensive care unit care stay in adults undergoing thoracic aortic surgery requiring deep hypothermic circulatory arrest. *J Cardiothorac Vasc Anesth* 2006; 20:8-13

7. Heindel SW, Mill MR, Freid EB, Valley RD, White GC II, Norfleet EA: Fatal thrombosis associated with a hemi-Fontan procedure, heparin-protamine reversal, and aprotinin. *ANESTHESIOLOGY* 2001; 94:369-71

8. Fanashawe MP, Shore-Lesserson L, Reich DL: Two cases of fatal thrombosis after aminocaproic acid therapy and deep hypothermic circulatory arrest. *ANESTHESIOLOGY* 2001; 95:1525-7

9. Donahue BS: The response to activated protein C after cardiopulmonary bypass: Impact of factor V Leiden. *Anesth Analg* 2004; 99:1598-603

10. Mangano DT, Tudor IC, Dietzel C, Multicenter Study of Perioperative Ischemia Research Group, Ischemia and Education Foundation: The risk associated with aprotinin in cardiac surgery. *N Engl J Med* 2006; 354:353-65

11. Smedira N, Dyke CM, Koster A, Jurmann M, Bhatia DS, Hu T, McCarthy HL, Lincoff M, Spiess B, Aronson S: Anticoagulation with bivalirudin for off-pump coronary artery bypass grafting: The results of the Evolution-Off study. *J Thorac Cardiovasc Surg* 2006; 131:686-92

12. Dyke CM, Smedira N, Koster A, Aronson S, McCarthy HL, Kirschner R, Spiess B: A comparison of bivalirudin to heparin with protamine reversal in patients undergoing cardiac surgery with cardiopulmonary bypass: The Evolution-On study. *J Thorac Cardiovasc Surg* 2006; 131:533-9

(Accepted for publication April 25, 2006.)

Anesthesiology 2006; 105:429

© 2006 American Society of Anesthesiologists, Inc. Lippincott Williams & Wilkins, Inc.

Implicit Memory during Isoflurane Anesthesia

To the Editor:—We read with interest the article by Iselin-Chaves *et al.*¹ in which implicit learning was studied during general anesthesia. Forty words were played 25 times during anesthesia, and each played word was associated with a Bispectral Index (BIS) value recorded at the moment the word was played. The authors showed that implicit learning persists for words played during light (BIS 61-80) and adequate anesthesia (BIS 41-60) but not during deep anesthesia (BIS 21-40). Because the words were repeated 25 times throughout anesthesia, each word was associated with 25 BIS values for each patient, and it is not clear whether the authors, to classify each word in a BIS category (21-40, 41-60, or 61-80), used the mean of the 25 BIS values or used the BIS range of these 25 values to be associated with each word. If the mean BIS value was used, it is possible that some of the word presentations have been played at a higher BIS value than stated in the study. So implicit learning presented as occurring at a BIS below 60 may actually have occurred at a higher BIS.

Moreover, the time for BIS processing was not taken into account; this processing is responsible for a 15- to 30-s delay between raw electroencephalogram recordings and BIS value display (depending on

the "BIS Smoothing Rate" setup).² So each BIS value associated with a word should have actually been associated with the word played 15-30 s earlier. This could have changed the assumption that implicit learning occurs with a BIS below 60. Indeed, during word presentation, BIS was above 60 during 18.5% of the time, which is far from what can be considered as an adequate anesthesia as stated in the article.

Pierre-Yves Lequeux, M.D.,* Gilbert Bejjani, M.D., Hicham Sekkat, M.D. *Centre Hospitalier Universitaire-Tivoli, La Louviere, Belgium. pillequeu@ulb.ac.be

References

1. Iselin-Chaves IA, Willems SJ, Jermann FC, Forster A, Adam SR, Van der Linden M: Investigation of implicit memory during isoflurane anesthesia for elective surgery using the process dissociation procedure. *ANESTHESIOLOGY* 2005; 103:925-33

2. A-2000 Bispectral Index (BIS) Monitoring System: Operating Manual. Newton, MA, Aspect Medical Systems, 2004, chapter 3.4.2, pp 3-10

(Accepted for publication April 25, 2006.)

Anesthesiology 2006; 105:430

© 2006 American Society of Anesthesiologists, Inc. Lippincott Williams & Wilkins, Inc.

In Reply:—We read with interest the comments by Lequeux *et al.* about our article,¹ and we agree with them. As mentioned in the Discussion, our positive memory results, even with adequate anesthesia, may be related to learning during a period of lighter anesthesia that was “missed” by our Bispectral Index (BIS) recording and also by our BIS analysis. More precisely, to classify each word in a BIS category, we used the mean of the BIS values associated with each word played during anesthesia. Therefore, it is possible that some of the words have been played at a higher BIS value than reported in the study. Moreover, as suggested by Lequeux *et al.*, because of the time requirement for BIS processing, the first BIS values associated with a word should have been associated with the word played earlier. We have thus reanalyzed our data regarding memory performance for the different levels of anesthesia, eliminating the BIS values associated with the 30 first seconds of each word presentation. Moreover, we have considered only the highest value of BIS associated with each word (and not the mean of BIS values). These “Maximal BIS” values were categorized as BIS 21–40, 41–60, and 61–80, and memory scores (C and A) were recalculated. We globally replicated our results despite these changes. That is, we found no evidence of memory during deep anesthesia (BIS 21–40, C = 0.05 ± 0.1 and A = 0.09 ± 0.14). However, memory for words was significant during adequate anesthesia (BIS 41–60), with a

significant contribution of implicit memory, because the automatic influence score was significantly greater than the base rate ($P < 0.05$; A = 0.18 ± 0.19). During light anesthesia (BIS 61–80), the automatic influence was greater than the base rate, but not significantly ($P = 0.09$; A = 0.17 ± 0.17). However, this nearly significant result for light anesthesia can be explained by the insufficient number of words that could be included in this analysis of memory performance. Finally, we found no evidence of explicit memory contribution regardless of the level of anesthesia (C = 0.04 ± 0.09 at BIS 41–60 and C = 0.04 ± 0.09 at BIS 61–80). This last analysis emphasizes the necessity of further investigations on persistence of implicit memory during light and adequate anesthesia.

Irène A. Iselin-Chaves, M.D.,* Sylvie J. Willems, Ph.D. *University Hospital of Geneva, Geneva, Switzerland. irene.iselin-chaves@hcuge.ch

Reference

1. Iselin-Chaves IA, Willems SJ, Jermann FC, Forster A, Adam SR, Van der Linden M: Investigation of implicit memory during isoflurane anesthesia for elective surgery using the process dissociation procedure. *ANESTHESIOLOGY* 2005; 103:925–33

(Accepted for publication April 25, 2006.)

Anesthesiology 2006; 105:430

© 2006 American Society of Anesthesiologists, Inc. Lippincott Williams & Wilkins, Inc.

Succinylcholine-induced Hyperkalemia

To the Editor:—Drs. Martyn and Richtsfeld¹ have provided a great deal of useful information in their recent review article titled “Succinylcholine-induced Hyperkalemia in Acquired Pathologic States.” However, clarification is warranted regarding their statement concerning my 2000 case report of a patient who developed succinylcholine-induced hyperkalemia.² Martyn and Richtsfeld state, “Another report of hyperkalemia with succinylcholine implicating pancreatitis as the etiologic factor actually had an upper motor neuron lesion of several weeks’ duration.” Actually, in my article, little attempt was made to implicate pancreatitis as the causal pathologic state. As was stated in my report, the patient’s upper motor neuron lesion was a traumatic cervical spine injury that occurred 14 months, rather than several weeks, before the hyperkalemic response to succinylcholine. The discussion that followed was meant to challenge the traditional views of how long extrajunctional neuromuscular receptors persist after traumatic upper motor neuron injury. In their review, Martyn and Richtsfeld have provided important information regarding the duration of these changes in acquired states. Importantly, they have made clear succinylcholine’s potential morbidity when used in critically ill patients who experience muscle atrophy, whether due to pharmacologic denervation or bed rest from critical illness (our patient had been critically ill for approximately 30 days and, in retrospect, resulting muscle atrophy was the most likely etiology of the patient’s hyperkalemic response.) The question that cannot be answered definitively by the review article of Martyn and Richtsfeld is, at what point does the risk/benefit ratio of a medication become unacceptable? As the potential morbidity of a therapy increases, the indications for that therapy become narrower. However, it remains difficult to determine when the risk of a therapy becomes absolutely prohibitive. My case report

presented the conundrum of an obese, hypoxemic, uncooperative patient who required tracheal intubation and who, by examination, had a potentially difficult airway. This type of patient encounter occurs sporadically and unpredictably and cannot be studied prospectively in any meaningful way. In 22 yr of clinical practice, I have personally witnessed several near airway catastrophes that followed the alternative use of long-acting nondepolarizing muscle relaxants in similar situations. Therefore, I continue to express the opinion offered in the last paragraph of my case report: “Recognizing that the hyperkalemic response to succinylcholine is unpredictable and that there are currently no criteria to establish those definitively at risk, it is uncertain that alternative administration of a long-acting nondepolarizing muscle relaxant would result in less overall morbidity when administered to a series of patients under similar circumstances.” Unfortunately, clinicians will continue to face these difficult therapeutic decisions, albeit with more wisdom instilled by the work of Martyn and Richtsfeld and others.

J. Mark Matthews, M.D., University of Missouri and St. Luke’s Hospital, Kansas City, Missouri. jmarkmatthews1@earthlink.net

References

1. Martyn JAJ, Richtsfeld M: Succinylcholine-induced hyperkalemia in acquired pathologic states: Etiologic factors and molecular mechanisms. *ANESTHESIOLOGY* 2006; 104:158–69
2. Matthews JM: Succinylcholine-induced hyperkalemia and rhabdomyolysis in a patient with necrotizing pancreatitis. *Anesth Analg* 2000; 91:1552–4

(Accepted for publication May 1, 2006.)

Anesthesiology 2006; 105:431

© 2006 American Society of Anesthesiologists, Inc. Lippincott Williams & Wilkins, Inc.

In Reply.—Dr. Matthews takes exception to a statement in the review¹ that refers to his publication.² The statement reads as follows: “Another report of hyperkalemia with succinylcholine implicating pancreatitis as the etiologic factor actually had an upper motor neuron lesion of several weeks’ duration.” Dr. Matthews claims that little attempt was made to implicate pancreatitis as the causal pathologic state in their case report.

His report² is titled “Succinylcholine-induced Hyperkalemia and Rhabdomyolysis in a Patient with Necrotizing Pancreatitis.” The end of the first paragraph of that report makes the following statement: “We report a case of succinylcholine-induced hyperkalemic cardiac arrest and subsequent myoglobinemic renal failure occurring in a patient with severe necrotizing pancreatitis.” Based on these statements, I concluded that pancreatitis was being implicated as the etiologic factor for the hyperkalemic response.

The risk-benefit ratio of the utility of a drug cannot be generalized and applied to all clinical situations. The decision to proceed or not with the administration of the drug (succinylcholine) has to be individualized based on the available information at that time for that patient with repeated evaluation of the situation with change of time and clinical scenario. Dr. Matthews had firsthand information and opportunity to evaluate the patient and, having weighed the pros and cons of the risks and benefits, decided to use succinylcholine. One cannot question that judgment call. He, in fact, considered alternative approaches, including fiberoptic and blind nasal approaches to intubation. However, it is stated, “titration of alternative drug, such as propofol, was felt to be too time consuming.”²

Regardless of whether neuronal lesion is of several weeks’ or several months’ duration, succinylcholine-induced hyperkalemia has been observed after full recovery of motor function.^{3,4} In the patient described, Dr. Matthews noted that residual spasticity was still present and the patient needed the use of a cane to ambulate. This patient was initially intubated because of respiratory failure on the fifth day of admission with no adverse events. The report does not provide an account of what drugs were used to facilitate intubation the first time. Was a relaxant used at all? If not, how was the intubation achieved in this obese, hypoxemic, uncooperative patient? These data would have clarified the limitations and advantages of the technique used, and whether in fact the residual effects of spinal contusion were still present, if succinylcholine was used the first time. Unfortunately, only the intubation technique used the second time is reported.

Gronert and Theye⁵ wrote the first review of succinylcholine-induced hyperkalemia in *ANESTHESIOLOGY* in 1975. Almost two decades later, based on new and relevant information, the subject was comprehensively reviewed in 1992.⁶ Information regarding acetylcholine receptor (AChR), its isoforms, and their responses to agonists and antagonists continues to

accumulate. This was the basis for the recent review.¹ During his 22 yr of clinical practice, Dr. Matthews has “personally witnessed several near airway catastrophes that followed the use of long-acting nondepolarizing relaxants in similar situations.” In the case reported, the use of a depolarizing relaxant also had a catastrophic consequence. As demonstrated by the observations of Dr. Matthews, sometimes the choices deliberately made, with the best of intentions, can still result in adverse outcomes. Even 40 yr after the original reports of succinylcholine hyperkalemia, we are still uncertain, in some situations, whether it would be safe to administer or desist from succinylcholine. It is possible that persistent pancreatitis (or inflammation) by itself may up-regulate AChRs even in the absence of immobilization. Clinical observations, such as that of Matthews, and basic studies may answer these questions in the future and guide us better.

On another note, I wish to modify my thinking on a statement made on page 164 of the review. It states that 100 mg succinylcholine is capable of releasing 0.56 mM choline, a concentration outside the physiologic range and sufficient to activate $\alpha 7$ AChRs. We now realize that this approximate concentration of choline when redistributed would result in a much smaller concentration at the neuromuscular junction. Although this does not preclude the mechanism suggested for succinylcholine and its metabolites (succinylmonocholine and choline) to stimulate $\alpha 7$ AChRs, the importance of the latter in the stimulation of the $\alpha 7$ AChRs becomes less significant. I thank William J. Perkins, M.D. (Associate Professor, Department of Anesthesiology, Mayo Clinic College of Medicine, Rochester, Minnesota), for bringing to this to my attention on January 24, 2006, in a personal communication *via* e-mail.

J. A. Jeevendra Martyn, M.D., F.R.C.A., F.C.C.M., Harvard Medical School, Massachusetts General Hospital, and Shriners Hospital for Children, Boston, Massachusetts. martyn@etherdome.mgh.harvard.edu

References

1. Martyn JAJ, Richtsfeld M: Succinylcholine-induced hyperkalemia in acquired pathologic states: Etiologic factors and molecular mechanisms. *ANESTHESIOLOGY* 2006; 104:158–69
2. Matthews JM: Succinylcholine-induced hyperkalemia and rhabdomyolysis in a patient with necrotizing pancreatitis. *Anesth Analg* 2000; 91:1552–4
3. Greenawalt JW III: Succinylcholine-induced hyperkalemia 8 weeks after a brief paraplegic episode. *Anesth Analg* 1992; 75:294–5
4. Feldman JM: Cardiac arrest after succinylcholine administration in a pregnant patient recovered from Guillain-Barré syndrome. *ANESTHESIOLOGY* 1990; 72:942–4
5. Gronert GA, Theye RA: Pathophysiology of hyperkalemia induced by succinylcholine. *ANESTHESIOLOGY* 1975; 43:89–99
6. Martyn JAJ, White DA, Gronert GA, Jaffe RS, Ward JM: Up-and-down regulation of skeletal muscle acetylcholine receptors. *ANESTHESIOLOGY* 1992; 76:822–43

(Accepted for publication May 1, 2006.)

David C. Wartier, M.D., Ph.D., served as Handling Editor for this exchange.

Anesthesiology 2006; 105:431–3

© 2006 American Society of Anesthesiologists, Inc. Lippincott Williams & Wilkins, Inc.

Long-term Respiratory Depression Induced by Intrathecal Morphine Treatment for Chronic Neuropathic Pain

To the Editor.—Intrathecal opioid treatment has become a widely used approach in cancer and chronic pain, particularly for the treatment of patients with neuropathic pain, failed back syndrome, and mixed-type pain.^{1,2} In contrast to the frequent reports of respiratory depression after postoperative intrathecal or epidural opioid administration,^{3–5} there are

only a few reports of severe drug-related complications under chronic intrathecal treatment using an intrathecal drug delivery system (IDDS) with a regular dosage. Particularly, to our knowledge, no case of a slowly increasing chronic respiratory depression after IDDS implantation has been reported.^{2,6–10} We report the case of a 41-yr-old man referred to our pain clinic 6 yr after a motorcycle accident leading to a C4–C7 root transection with attributed medullary and cervical plexus lesion. Despite implantation of an IDDS (Isomed-60-ml; Medtronic, Inc., Minneapolis,

Support was provided solely from institutional and/or departmental sources.

Anesthesiology, V 105, No 2, Aug 2006

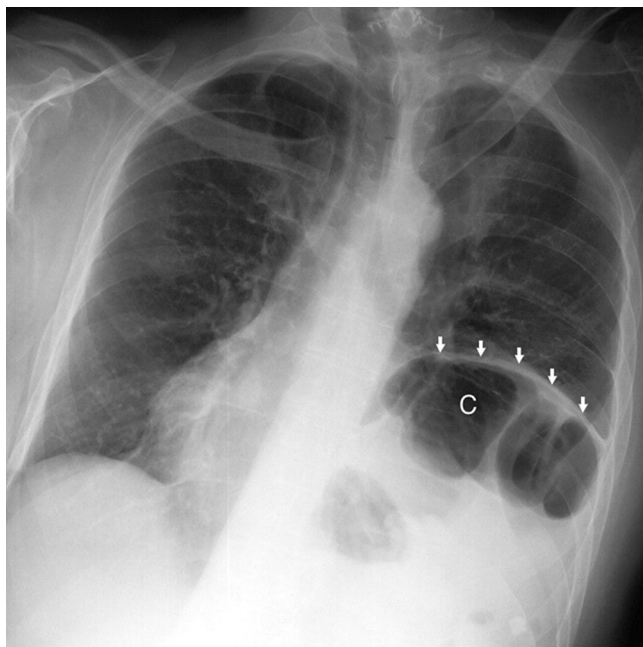


Fig. 1. Chest x-ray. *White arrows* mark elevated left diaphragm. *C* = colon.

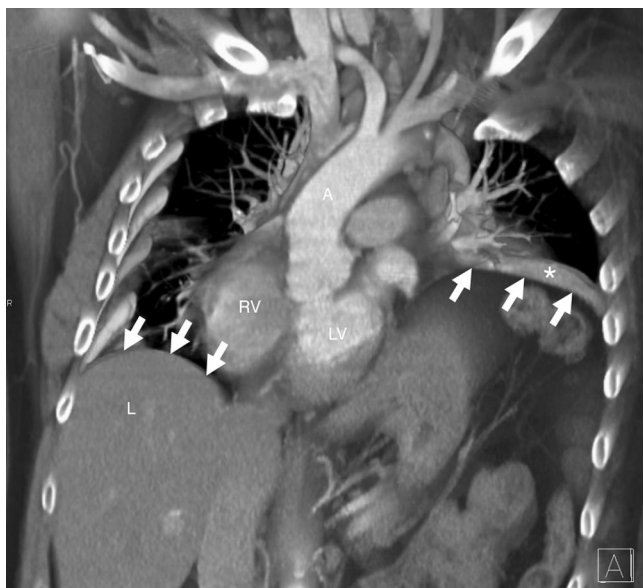


Fig. 2. Computerized, contrast-enhanced, multisliced tomography; coronary reconstruction. *White arrows* mark the right and left diaphragm; left side elevated diaphragmatic dome with compression atelectasis (*). *A* = aorta; *L* = liver; *LV* = left ventricle; *RV* = right ventricle.

MN) 8 months previously, he experienced intractable neuropathic pain, including deafferentation pain at the left upper limb, and tactile allodynia at the left chest after a coagulation of the dorsal root entry zone of the substantia gelatinosa (DREZ lesion) 1 yr ago. At time of presentation, the medication included 75 mg amitriptyline, 1,800 mg gabapentin, and an intrathecal infusion of 4 mg morphine per day since 1 yr. The pain relief was insufficient, with a mean pain level of 7 on a numeric rating scale (0–10). In addition, the patient reported increasing dyspnea, severe fatigue, sleep disorder, and depressed mood during the past 8 months. He was unable to walk more than 10 m, he needed permanent administration of oxygen, and partly assisted ventilation (continuous positive airway pressure) became necessary during the past 6 months. The medical and

neurologic examination revealed a tired patient with complete paralysis of the left arm, accompanied by atrophy, anesthesia (C4–C7), Horner syndrome, and tactile allodynia of the left chest. Chest x-ray and computed tomography of the chest demonstrated a left elevated diaphragm as a consequence of phrenic nerve paralysis (figs. 1 and 2). Arterial blood gas analysis revealed respiratory acidosis (in arterial blood: partial pressure of oxygen [Pao₂], 47.0 mmHg; partial pressure of carbon dioxide [Paco₂], 65.1 mmHg; pH, 7.33; base excess, 5.3 mm; saturation, 80%). Pain started immediately after the accident and was treated by several combinations of opioids and other analgesics, which the patient did not remember in detail. An IDDS was implanted in January 2004, with an initial daily dose of 14 mg morphine and 0.15 mg clonidine. Nearly 2 weeks later, catheter leakage and dislocation provoked a withdrawal syndrome, and after replacement of the catheter with the previous dose of morphine, cardiopulmonary resuscitation became necessary. The patient recovered completely from this intervention. Subsequently, the morphine dosage was reduced to 2 mg/day. The exact time course of dose changes within the following months is unknown, but the dose finally increased to 4 mg morphine per day. During these last months, the patient's psychiatric state and general condition worsened significantly.

Because of the psychological symptoms, particularly the severe tiredness and depressed mood, and the reduced pulmonary function, we suspected chronic opioid intoxication, and consequently the daily intrathecal morphine dose was reduced from 4 to 1 mg within 3 weeks and subsequently was switched to a concomitant oral medication (12 mg/day hydromorphone). In addition, 0.6 mg/day clonidine was substituted for 5 weeks, and pregabalin (300 mg/day) was substituted for gabapentin. Under this medication, the patient reported a considerable improvement in pain level, tiredness, and psychological state, and the dyspnea and respiratory function recovered to normal (in arterial blood: Pao₂, 126.7 mmHg; Paco₂, 41.8 mmHg; pH, 7.424; base excess, 2.8 mm; saturation, 98%). Obviously, the morphine effects on respiration were facilitated by (1) consequences of the accident, including phrenic nerve paralysis, elevation of the diaphragm, and atelectasis, and (2) the reduced vigilance after dose escalation. However, the key role of intrathecal morphine for the chronic deterioration of the patient's condition was proven by complete recovery not only of the tiredness and other psychiatric symptoms but also by return to normal in all respiratory parameters and the physical capacity after morphine reduction and change to oral opioid treatment.

One reason for this case presentation was the remarkable fact that all involved physicians (neurosurgeons, neurologists, rehabilitation and pain specialists) did not recognize the correlation of increasing morphine dose without any analgesic improvements, the increasing fatigue, exercise dyspnea, and the deterioration of pulmonary function step-by-step for several months although respiratory depression with intrathecal opioids is well known. The missing anticipation of respiratory risk under long-term intrathecal morphine medication is matched by missing precautions in the cited European and German guidelines.^{11,12} In consequence, physician awareness is apparently limited only to acute signs of intoxication (such as bradypnea, respiratory arrest). There is an increasing number of reports such as this one revealing potentially life-threatening side effects or persistent neurologic sequelae of IDDS, and there are no controlled trials evaluating the frequency of more moderate respiratory depression or increased sleep apnea syndrome in chronic pain patients. The current patient is one of several referred to our pain clinic and treated intrathecally because of a supposed resistance to therapy. These patients were mainly diagnosed in neurosurgical or orthopedic departments with a monodisciplinary approach to pain treatment.¹³ Most of them—like the current patient—could be treated sufficiently without IDDS using multimodal nonmedical protocols and medical treatment, mainly including oral opioids. Therefore, treatment resistance should be diagnosed very cautiously. We recommend a reevaluation of intrathecal opioid treatment in chronic pain states considering that, in contrast to intrathecal spasmolytic treatment and oral opioid pain treatment,^{14–16} no randomized controlled trials are available.

Andrea Scherens, M.D.,* Thomas Kagel, M.D., Michael Zenz, M.D., Ph.D., Christoph Maier, M.D., Ph.D. *University Hospital, BG-Kliniken Bergmannsheil, Bochum, Germany. andrea.scherens@rub.de

References

1. Smith TJ, Staats PS, Deer T, Stearns LJ, Rauck RL, Boortz-Marx RL, Buchser E, Catala E, Bryce DA, Coyne PJ, Pool GE, Implantable Drug Delivery Systems Study Group: Randomized clinical trial of an implantable drug delivery system compared with comprehensive medical management for refractory cancer pain: Impact on pain, drug-related toxicity, and survival. *J Clin Oncol* 2002; 20:4040-9
2. Angel I, Gould H, Carey M: Intrathecal morphine pump as a treatment option in chronic pain of nonmalignant origin. *Surg Neurol* 1998; 49:92-9
3. Chaney MA: Side effects of intrathecal and epidural opioids. *Can J Anaesth* 1995; 42:891-903
4. Ko S, Goldstein DH, Van Den Kerkhof EG: Definitions of "respiratory depression" with intrathecal morphine postoperative analgesia: A review of the literature. *Can J Anaesth* 2003; 50:679-88
5. Chrubasik S, Senninger N, Chrubasik J: Treatment of pain with peridural administration of opioids. *Chirurg* 1996; 67:665-70
6. Wallace M, Yaksh TL: Long-term spinal analgesic delivery: A review of the preclinical and clinical literature. *Reg Anaesth Pain Med* 2000; 25:117-57
7. Hassenbusch S, Stanton-Hicks M, Covington E, Walsh J, Guthrey D: Long-term infusions of opioids in the treatment of neuropathic pain. *J Pain Symptom Manage* 1995; 10:527-43

8. Williams JE, Louw G, Towler G: Intrathecal pumps for giving opioids in chronic pain: A systematic review. *Health Technol Assess* 2000; 4:iii-iv, 1-65
9. Nitescu P, Dahm P, Appelgren L, Curelaru I: Continuous infusion of opioid and bupivacaine by externalized intrathecal catheters in long-term treatment of "refractory" nonmalignant pain. *Clin J Pain* 1998; 14:17-28
10. Anderson VC, Burchiel KJ: A prospective study of long-term intrathecal morphine in the management of chronic nonmalignant pain. *Neurosurgery* 1999; 44:289-300
11. Gybels and the Task Force of the EFIC: Neuromodulation of pain: A consensus statement. *Eur J Pain* 1998; 2:203-9
12. Harke H, Rosenow E, Tronnier V, Fromme C, Deynet G, Gretenkort P, Buschman D, Rohr P, Ladleif HU, von Glinski E, Schutze G, Schultze R, Keller HL, Kniessel B, Pfeifer R, Lux E: Standardisierung invasiver neuromodulatorischer Verfahren. *Schmerz* 2003; 17:44-9
13. Kindler D, Maier C, Kagel T, Schulz S, Weiss T, Zenz M: Neurologische Komplikationen und Wirkverlust unter intrathekaler Schmerztherapie. *Schmerz* 2005; 19:144-55
14. Kalso E, Edwards JE, Moore RA, McQuay HJ: Opioids in chronic non-cancer pain: Systematic review of efficacy and safety. *Pain* 2004; 112:372-80
15. Dario A, Scamoni C, Picano M, Casagrande F, Tomei G: Pharmacological complications of the chronic baclofen infusion in the severe spinal spasticity: Personal experience and review of the literature. *J Neurosurg Sci* 2004; 48:177-81
16. Dario A, Tomei G: A benefit-risk assessment of baclofen in severe spinal spasticity. *Drug Saf* 2004; 27:799-818

(Accepted for publication April 17, 2006.)

Anesthesiology 2006; 105:433

© 2006 American Society of Anesthesiologists, Inc. Lippincott Williams & Wilkins, Inc.

The Value of Simulation Training during Anesthesia Residency

To the Editor:—It is hard to measure the intangibles of skilled anesthesia management such as leadership, planning, and dynamic problem solving, let alone to link them unequivocally to specific patient outcomes. Although simulation training has been advanced as a method to help develop crisis management and other "nontechnical" skills, proof of this link is currently incomplete.¹⁻³ However, a recent example may highlight the value of simulation training during anesthesia residency with respect to these issues. On a recent international medical trip, the operating room's sole oxygen supply, an H-cylinder, was accidentally knocked over, severely damaging its regulator and causing a high-pressure leak necessitating its immediate removal. Because oxygen was the only gas supplied to the anesthesia machine, all fresh gas flow to the anesthetized and paralyzed patient ceased, and the oxygen supply alarm sounded.

Options at this point included (1) hand ventilation through the circuit (taking advantage of a functional carbon dioxide-absorbing system), but diluting the alveolar anesthetic level and risking wastage of oxygen through small leaks in the circuit, or (2) apneic oxygenation from a quiescent circuit. The latter was chosen, because it would be the means most likely to maintain alveolar anesthetic and oxygen levels while freeing hands to prepare for an intravenous anesthetic. Accordingly, further ventilation was temporarily suspended, and the sidestream carbon dioxide sampling line was disconnected and capped (so as not to waste oxygen from the circuit). Fortunately, a pulse oximeter was available.

The personnel management of this situation focused on dispatching others to obtain a self-inflating ventilation bag from the recovery room (the one and only such device in the entire hospital) and making preparations for an intravenous anesthetic, while seeking a replacement for the damaged oxygen pressure regulator. In this particular event, the patient experienced 6-7 min of apnea and remained anesthetized while maintaining oxyhemoglobin saturations of 100%.

When faced with an oxygen supply loss, the near explosion of an unsecured cylinder, and a loud alarm, one's first instinct may be to vigorously ventilate the patient. However, by closing the pressure relief

valve and discontinuing sidestream carbon dioxide analysis, one can ensure a 4- to 15-min oxygen supply (depending on fraction of inspired oxygen, functional residual capacity, and patient metabolism). It is not clear how long it would have taken to sort through these options from first principles under these difficult conditions without previous exposure to a similar problem during a crisis simulation course in residency (Anesthesia Crisis Resource Management, Stanford University School of Medicine, Stanford, California).⁴⁻⁶ In this course, trainees manage both common and novel operating room complications, allowing them to develop templates for technical and behavioral responses to such situations. The use of high-fidelity human patient simulators and recreated operating room environments in courses such as this capture both the stress and the immediacy of real patient emergencies and, ideally, provide the first exposure to plausible catastrophes in a setting where no patients' lives are at risk. When a potentially catastrophic oxygen supply failure arose in real life, its management seemed relatively routine because, virtually speaking, I'd been there before.

Geoffrey K. Lighthall, M.D., Ph.D., Stanford University School of Medicine, Stanford, California. geoffl@stanford.edu

References

1. Chopra V, Gesink BJ, de Jong J, Bovill JG, Spierdijk J, Brand R: Does training on an anaesthesia simulator lead to improvement in performance? *Br J Anaesth* 1994; 73:293-7
2. Yee B, Naik VN, Joo HS, Savodelli GL, Chung DY, Houston PL, Karatzoglou BJ, Hamstra SJ: Nontechnical skills in anesthesia crisis management with repeated exposure to simulation-based education. *ANESTHESIOLOGY* 2005; 103:241-8
3. DeVita MA, Schaefer J, Lutz J, Dongilli T, Wang H: Improving medical crisis team performance. *Crit Care Med* 2004; 32 (suppl):S61-5
4. Gaba DM: Improving anesthesiologists' performance by simulating reality. *ANESTHESIOLOGY* 1992; 76:491-4
5. Gaba DM, DeAnda A: A comprehensive anesthesia simulation environment: Re-creating the operating room for research and training. *ANESTHESIOLOGY* 1988; 69:387-94
6. Howard SK, Gaba DM, Fish KJ, Yang G, Sarnquist FH: Anesthesia crisis resource management training: Teaching anesthesiologists to handle critical incidents. *Aviat Space Environ Med* 1992; 63:763-70

(Accepted for publication April 17, 2006.)

Salary support was provided by Veterans Affairs Medical Center, Palo Alto, California.

Tubing Misload Allows Free Flow Event with Smart Intravenous Infusion Pump

To the Editor:—The use of “smart” intravenous infusion pumps incorporating microcomputer technology holds the promise of safer medication administration and is endorsed by ECRI (formerly the Emergency Care Research Institute).¹ A sophisticated feature of smart pumps is the medication library for particular patient types or care venues. Drugs in the library are given absolute (hard) or advisory (soft) preprogrammed dosing limits. The user selects the appropriate library, drug, and concentration, thereby invoking the limits for that medication. If a limit is breached, an alarm is both seen and heard. An “anesthesia mode” within each library allows prolonged pause, alarm management, and dose limits specific for the operating room.

After an intensive multidisciplinary study that included review of safety data, a return-on-investment analysis, a failure mode and effects analysis, and a usability trial, the University of Wisconsin Hospital and Clinics selected and implemented the Alaris Medley Medication Safety System intravenous pump (ALARIS Medical Systems, Inc., San Diego, CA) in October 2003. Before use in the operating room, training to highlight pump safety features, setup, programming, and capabilities was mandated for all anesthesia providers.

The failure mode and effects analysis team was aware, *via* an Internet discussion group and discussions with the manufacturer, of reports describing incorrect loading of the pumping segment of the Alaris intravenous tubing. Two types of misloads involving a hard plastic upper fitment were described. The first resulted from lifting the upper fitment as the pump door was closed, thereby stretching the silicone plastic pumping segment, typically causing an underinfusion. The second type of misload was less well understood and difficult to reproduce. It was thought to involve trapping the upper fitment in a tilted position as the pump door was closed. Because of these reports, preimplementation training specifically focused on correctly loading the upper fitment.

Three weeks after pump implementation, a 58-yr-old man presented for elective coronary revascularization as the first case of the day. Preoperative anesthesia equipment setup included Alaris intravenous pumps mounted at eye level to facilitate reading the programming screen. One tubing set was primed with nitroglycerin, the roller clamp was closed, the tubing was loaded, and the pump module door was closed and latched. The pump was turned on; the infusion was programmed and placed into prolonged pause as indicated by a yellow light at the top of the pumping module. The tubing was connected to a primed carrier fluid system that included a stopcock manifold (Merit Medical Systems, Inc. South Jordan, UT) and narrow bore extension tubing (Arrow International Inc., Reading, PA). Roller clamps and manifold stopcocks were opened to allow immediate initiation of therapy as necessary; however, the extension tubing that would eventually connect the manifold to the patient’s central venous line remained clamped.

The patient was brought to the operating room. After induction of anesthesia and preparation for surgery, the extension tubing from the manifold was connected to the infusion port of the central venous catheter (MAC; Arrow International, Inc.). Later, the clamp on the extension tubing was opened to allow the slow infusion of carrier fluid *via* the manifold.

Almost immediately, and for no readily apparent reason, the patient’s

arterial pressure decreased and required repeated treatment with bolus administration of vasopressors by syringe. Transesophageal echocardiography revealed a marked decrease in left ventricular end-diastolic volume and function. The blood pressure recovered within minutes. Only then was the nitroglycerin bottle supplying the infusion pump found to be completely empty. A free-flow malfunction of the pump was suspected.

Close examination of the nitroglycerin pump module revealed a gap at the top of the door (fig. 1). The pump in question was removed and sequestered. Surgery proceeded without incident. Postoperatively, the patient was found to be neurologically at baseline and without untoward sequelae.

The sequestered pump was photographed, and the databases within the control and pump module were downloaded. Visual examination revealed that part of the intravenous tubing, the upper fitment, a molded hard plastic flange designed to be loaded from above into a recess, had been “front loaded” and held in place by the flange as the door was closed. The door closed sufficiently to latch and to open the flow-stop slide clamp below the pumping mechanism. The tubing flange held the door away from the reticulating finger pumping mechanism that normally sequentially occludes the tubing and controls flow. When the tubing is loaded as designed and the pump is off or paused, the fingers press the tubing against the door and completely prevent flow. In this event, the reticulating fingers could not reach the door, the tubing was not occluded, and free flow occurred.

Review of the downloaded pump databases revealed that during the setup, the pump alarmed twice before the audio and visual alarm indicators were cancelled when the pump was placed in prolonged pause. The alarm message displayed was “Fluid side occlusion.”

Three issues are particularly concerning. First, the failure mode and effects analysis conducted before the implementation of the pumps was lengthy and thorough but did not predict the failure mode causing

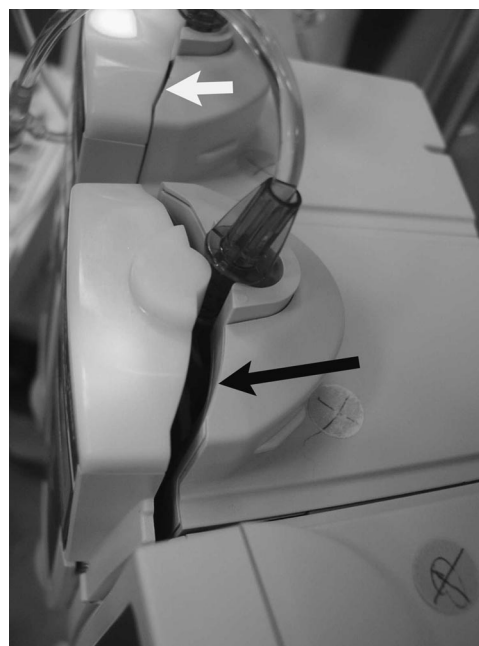


Fig. 1. The Alaris Medley Medication Safety System intravenous pump viewed from above. The **black arrow** indicates the door gap caused by “front loading” the hard plastic upper fitment. The **white arrow** indicates a normal door gap on another pumping module.

Supported by grant No. 1 UC1 HS014253-01 from the Agency for Healthcare Research and Quality, Rockville, Maryland (Principal Investigator: Dr. Carayon), and the University of Wisconsin Department of Anesthesiology, Madison, Wisconsin. Dr. Schroeder visited ALARIS Medical Systems, Incorporated, as a member of a team representing the University of Wisconsin Hospital in May 2003 at the expense of Alaris. In August 2005, Dr. Schroeder became a consultant to Cardinal Health, Incorporated. The opinions expressed are those of the authors and not do not necessarily reflect those of Cardinal Health, Incorporated, or its affiliates.

the frank free flow we report. Second, the alarm message displayed during setup indicated an occlusion as opposed to a potential free flow, a message that did not alert the user to the fault. Finally, this event occurred despite intensive user training before implementation that emphasized correct upper fitment loading.

We believe other factors also contributed to this event. Because the pump was mounted at eye level, the door gap at the top was not visible. It is likely that time pressure, distraction from other setup activity in the operating room, and the practitioner's inexperience clinically with the new pump increased the likelihood of this event.

Clinical introduction of new products may result in unanticipated consequences despite preintroduction evaluation, institution-specific usability testing, and carefully planned user training.² Such training cannot be relied on to overcome design flaws in equipment.

This incident was reported through the US Food and Drug Administration reporting system. The manufacturer has since modified the pump module and error messages to reduce the risk of free flow from this cause.³

Mark E. Schroeder, M.D.,* Richard L. Wolman, M.D., Tosha B. Wetterneck, M.D., Pascale Carayon, Ph.D. *University of Wisconsin School of Medicine and Public Health, Madison, Wisconsin. meschro2@wisc.edu

The authors thank Paul R. Malischke, B.S.E.E. (Anesthesia Equipment Manager, University of Wisconsin Hospital and Clinics, Madison, Wisconsin).

References

1. General-purpose infusion pumps. *Health Devices* 2002; 31:353-87
2. Leape L: Smart pumps: A cautionary tale of human factors engineering. *Crit Care Med* 2005; 33:679-80
3. Hazard report: Alaris Medley medication safety system LVP module can permit gravity flow if sets are misloaded. *Health Devices* 2004; 33:443-5

(Accepted for publication April 17, 2006.)