

ERRATUM: Dimensions of fluvial-tidal meanders: Are they disproportionately large?

Jasper R.F.W. Leuven, Barend van Maanen, Bente R. Lexmond, Bram V. van der Hoek, Matthijs J. Spruijt, and Maarten G. Kleinans

ORIGINAL ARTICLE: 2018, v. 46, no. 10, p. 923–926, <https://doi.org/10.1130/G45144.1>. First published 11 September 2018.

ERRATUM PUBLICATION: 2018, v. 46, no. 11, p. 1023, <https://doi.org/10.1130/G45144E.1>.

In Figure 2, the vertical axis labels of panel C are incorrect. The numbers on the vertical axis, from bottom to top, should be 10^1 , 10^2 , and 10^3 .

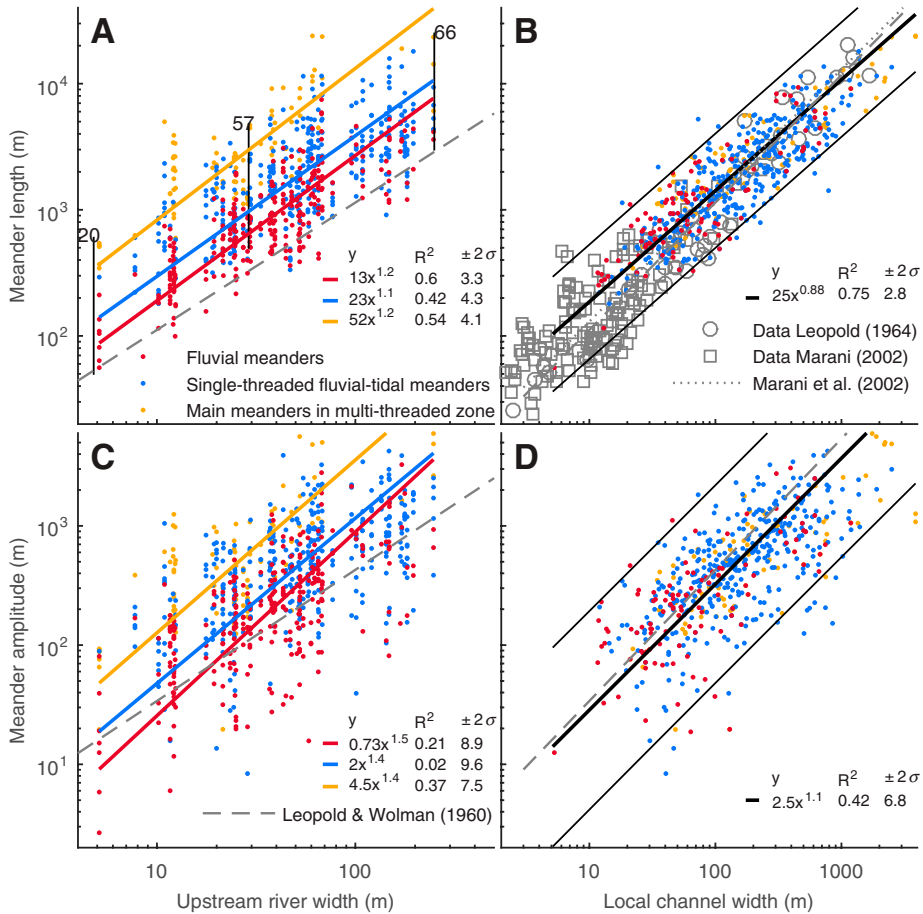


Figure 2. Meander length (A) and amplitude (C) as a function of upstream river width. Vertically aligned symbols indicate along-channel variation per system. Numbers correspond to systems in Table DR2 (see footnote 1). B,D: Dimensions as a function of local channel width, and comparison with fluvial and tidal meanders. Regression in B is based on data from this study only. Confidence limits (95%) are indicated by the 2σ value.