

Anoikis, Initiated by Mcl-1 Degradation and Bim Induction, Is Deregulated during Oncogenesis

Nicholas T. Woods,¹ Hirohito Yamaguchi,¹ Francis Y. Lee,² Kapil N. Bhalla,³ and Hong-Gang Wang¹

¹H. Lee Moffitt Cancer Center & Research Institute, University of South Florida, Tampa, Florida; ²Bristol-Myers Squibb Pharmaceutical Research Institute, Princeton, New Jersey; and ³Medical College of Georgia Cancer Center, Augusta, Georgia

Abstract

Anoikis, a Bax-dependent apoptosis triggered by detachment from the extracellular matrix, is often dysfunctional in metastatic cancer cells. Using wild-type and c-Src-transformed NIH3T3 cells as a model, we identified Mcl-1 degradation and Bim up-regulation as a critical determinant of anoikis initiation. Detachment rapidly degraded Mcl-1 via a GSK-3 β -dependent proteasomal pathway and transcriptionally up-regulated Bim expression. Mcl-1 degradation in the presence of Bim was sufficient to induce anoikis. By analyzing nonmetastatic Saos-2 and metastatic derivative LM7 cells, we confirmed that dysregulation of Mcl-1 degradation and Bim induction during detachment contributes to decreased anoikis sensitivity of metastatic cells. Furthermore, knockdown of Mcl-1 or pharmacologic inhibition of the phosphoinositide-3-kinase/Akt and mitogen-activated protein kinase pathways that suppress Mcl-1 degradation and Bim expression could markedly sensitize metastatic breast cancer cells to anoikis and prevent metastases *in vivo*. Therefore, Mcl-1 degradation primes the cell for Bax activation and anoikis, which can be blocked by oncogenic signaling in metastatic cells. [Cancer Res 2007;67(22):10744–52]

Introduction

The extracellular matrix (ECM) provides adhesive support to normal tissues and controls numerous signals that regulate diverse cellular processes such as survival, growth, and differentiation (1). When normal cells are detached from the ECM, they die by a process termed anoikis (2). Anoikis is essential for common biological processes involved in homeostasis, morphogenic changes, and inhibition of cancer metastasis. Aggressive breast, colon, and lung malignancies with a propensity to metastasize have been shown to lack the normal apoptotic response after detachment from the supporting matrix (3–5). Therefore, cancer cells more apt to resist anoikis due to genetic mutation or overactive survival signaling are increasingly likely to initiate distal metastases (6).

Anoikis relies heavily on the mitochondrial pathway of apoptosis, and Bax has been found to be a key effector of this process (7, 8). Bax is an apical regulator of the intrinsic apoptotic pathway and its activation status is determined by its conformation (9, 10). The Bcl-2 family of proteins is composed of both proapoptotic and

antiapoptotic members, and the balance of life and death for the cell is dependent on the prevalence and potency of these proteins. The BH3-only proteins Bim, tBid, and Puma are proapoptotic because of their ability to activate Bax. However, on the opposing side of the equation are proteins such as Bcl-2, Bcl-XL, and Mcl-1 which can repress Bax activation (11). It is known that sequestering of BH3-only proteins such as Bim and tBid to the mitochondria by Mcl-1 prevents apoptosis (12). Mcl-1 is a short-lived protein in comparison to Bcl-2 or Bcl-XL, with a half-life as short as 40 min (13). Mcl-1 is regulated post-translationally by Mule, Mcl-1 ubiquitin-ligase E3, which ubiquitinates Mcl-1 to promote its degradation by the proteasome (14). This ubiquitination can be directed by phosphorylation events involving the kinase GSK-3 β at Ser¹⁵⁹ of Mcl-1 (15). In relation to metastasis, it was recently determined in a Lewis lung carcinoma model that hypoxia-induced clonal selection of cells overexpressing Mcl-1 correlated with a higher metastatic potential of the tumor (16).

In this study, we identified the stabilization of Mcl-1 and suppression of Bim as critical events during oncogenic suppression of anoikis. The transition of cells to a metastatic phenotype correlates not only with increased Mcl-1 expression, but also to the altered regulation of its degradation profile in response to detachment. Inhibition of survival signals mediated by active Src or downstream Akt and Erk1/2 kinases that control Mcl-1 degradation and Bim induction is able to restore Bax activation and anoikis susceptibility. Furthermore, Mcl-1 repression, but not Bcl-2 or Bcl-XL inhibition, is capable of initiating anoikis in metastatic cancer cells. This study is the first to characterize Mcl-1 degradation in anoikis and the oncogenic signaling that can disrupt this essential mechanism in human cancers.

Materials and Methods

Reagents. Poly(2-hydroxyethyl methacrylate; polyHEMA), caspase-3 assay kit, cycloheximide, MG132, oligonucleotides for short hairpin RNA (shRNA) constructs, and monoclonal antibodies specific for Bax (clone 6A7), α -tubulin, and β -actin were purchased from Sigma. 3-[(3-Cholamidopropyl)-dimethylammonio]-1-propanesulfonate (CHAPS) was purchased from MP Biomedicals. Anti-mouse Mcl-1 was purchased from Rockland. Monoclonal anti-Akt and polyclonal anti-p473 Akt antibodies were purchased from R&D Systems. Anti-p202/204 Erk1/2 and anti-Erk1/2 polyclonal antibodies and U0126 were purchased from Cell Signaling. Polyclonal Bax (N20) and goat anti-rabbit IgG-horseradish peroxidase were purchased from Santa Cruz. Polyclonal anti-Bim antibody, TDZD-8, and the fluorogenic chymotrypsin substrate III were purchased from Calbiochem. The anti-human Mcl-1 antibody was purchased from BD Biosciences. LY294002 was purchased from Alexis.

Plasmids. The pcDNA3-BimEL vector was described previously (9). The pcDNA3.1/V5-His-TOPO plasmids encoding wild-type and mutant Mcl-1 were described previously (15). Oligos for shRNAs targeting Bim 5'-GTT-CTGAGTGTGACAGAGA-3' and Mcl-1 5'-GAGGACGACCTATACGCC-3' (c-1) and 5'-GCCCTAATTAACAACGTTG-3' (c-3) were synthesized and

Note: Supplementary data for this article are available at Cancer Research Online (<http://cancerres.aacrjournals.org/>).

Requests for reprints: Hong-Gang Wang, Drug Discovery Program, H. Lee Moffitt Cancer Center and Research Institute, 12902 Magnolia Drive, Tampa, FL 33612. Phone: 813-745-6764; Fax: 813-745-7265; E-mail: Hong-Gang.Wang@Moffitt.org.

©2007 American Association for Cancer Research.
doi:10.1158/0008-5472.CAN-07-3148

cloned into the *Bgl*II and *Sal*I restriction sites of LTRH1-puro (Ken Watanabe, National Center for Geriatrics & Gerontology, Aichi, Japan). The retroviral constructs expressing Bcl-2-IRES-Bim, Bcl-XL-IRES-Bim, and Mcl-1-IRES-Bim were described previously (17). The pLKO.1-based lentiviral shRNA targeting human Mcl-1, TRCN000005517, was purchased from Open Biosystems. The pLKO.1-based scrambled control shRNA vector was purchased from Sigma.

Cell culture and transfection. Wild-type, v-Src, and c-Src (527F) NIH3T3 cells were previously described (18). GSK-3 β ^{-/-} MEF cells were kindly provided by Dr. James Woodgett (Samuel Lunenfeld Research Institute, Mount Sinai Hospital, Toronto, Ontario, Canada; ref. 19). NIH3T3 and MEF cells were maintained in DMEM supplemented with 10% fetal bovine serum and 1% penicillin/streptomycin. Saos-2, LM7, and MDA-MB-231 cell lines were maintained in MEM supplemented with 10% fetal bovine serum, 1% penicillin/streptomycin, 1 mmol/L of sodium pyruvate, and 1 \times MEM nonessential amino acids. To induce anoikis, cells were maintained in the same medium supplemented with 1% (for mouse cell lines) or 10% (for human cell lines) fetal bovine serum in polyHEMA-coated plates. Transfection was completed with LipofectAMINE 2000 (Invitrogen) according to the manufacturer's recommendations. Recombinant retrovirus and lentivirus were produced in Amphotropic 293T packaging cells and 293FT cells with ViraPower Packaging Mix (Invitrogen), respectively.

Caspase-3, chymotrypsin, and lactate dehydrogenase release. Caspase-3 activation was assayed as DEVDase activity with the caspase-3 fluorescence assay kit (Sigma). Cell death was measured using the lactate dehydrogenase cytotoxicity assay (Biovision) according to the manufacturer's recommendations. The fluorogenic chymotrypsin substrate III (Calbiochem) was used to measure chymotrypsin-like activity.

Semiquantitative reverse transcription-PCR. Semiquantitative reverse transcription-PCR (RT-PCR) was completed using the Qiagen OneStep RT-PCR system according to the manufacturer's recommendations. Primers used for the reactions are: 5'-TGCAGGGTTATGGAATCCTC-3' and 5'-GCCCTACCTCCCTACAGAC-3' for Bim; 5'-GCAGCTTCAAGTCCACCTTC-3' and 5'-AGATGGCGTAACAACTGGG-3' for Mcl-1; and 5'-AATGTGTCGCTCGTGATCT-3' and 5'-CCCTGTTGCTGTAGCCGTAT-3' for glyceraldehyde-3-phosphate dehydrogenase.

In vivo metastasis model. MDA-MB-231-luc-D3H2LN cells were obtained from Xenogen and infected with lentiviral Mcl-1 shRNA (shMcl-1) or control scrambled shRNA (shScr). After 10 days, selection with 0.5 μ g/mL of puromycin, 1 \times 10⁶ cells were injected into 10- to 12-week-old Harlan nude mice via the tail vein. Three weeks postinjection, mice were imaged using the IVIS200 system (Xenogen) as per the manufacturer's recommendations. Statistical significance was determined using Student's *t* test.

Results

Src signaling ablates the anoikis response due to an inhibition of Bax activation. The anoikis response is known to be inhibited in cells expressing the Src oncogene (20), but the mechanisms involved are poorly understood. To determine the characteristics of the anoikis response, parental and Src-transformed NIH3T3 cells were forcibly detached on polyHEMA-coated plates for varying lengths of time. Wild-type cells were observed to rapidly lose viability in a time-dependent manner whereas cells with active c-Src (527F) and v-Src exhibited limited cell death as determined by a trypan blue exclusion assay (Fig. 1A). The loss of viability in wild-type cells correlated with the activation of caspase-3 as measured by the DEVDase activity (Supplementary Fig. S1A). The activation of Bax is known to be an initiating event in the activation of the caspase cascade during anoikis (21). Therefore, we assessed the activation status of Bax by immunoprecipitation (Fig. 1B) with the Bax 6A7 monoclonal antibody and immunostaining (Supplementary Fig. S1B) with the Bax N20 polyclonal antibody. Both of these antibodies specifically recognize conformationally active Bax. Figure 1B illustrates that Bax activation is completely inhibited in 527F

and v-Src cells, whereas wild-type cells exhibit a time-dependent increase in the conformationally changed Bax protein beginning as early as 8 h post-detachment. Similarly, immunofluorescence staining (Supplementary Fig. S1B and C) shows that Bax becomes active in wild-type cells but not 527F-expressing cells in response to cell detachment. However, treatment with the Src family kinase inhibitor dasatinib clearly restored detachment-induced Bax activation in 527F cells (Supplementary Fig. S1B and C).

Mcl-1 and Bim are critical regulators of anoikis. To determine the role of protein neogenesis in the activation of Bax during anoikis, cycloheximide was used to block *de novo* protein synthesis in both wild-type and 527F cells detached on polyHEMA. Cycloheximide markedly reduced detachment-induced Bax activation and cellular caspase-3 activity in wild-type cells as well as in 527F cells treated with dasatinib (Supplementary Fig. S2A and B). This prompted us to examine the gene expression profiles associated with anoikis in 527F cells treated with or without dasatinib by microarray (Supplementary Fig. S2C). There was a clear increase in the induction of Bim and Puma, both known activators of Bax. There was also a slight decrease in the transcription of the anti-apoptotic proteins Mcl-1 and Bcl-XL. Members of the caspase family were generally unchanged; however, their involvement in Bax activation was ruled out through the use of the pan caspase inhibitor z-VAD-fmk, which was unable to inhibit Bax conformational change during detachment (data not shown).

The microarray analysis allowed us to form a short list of Bcl-2 family proteins that are differentially transcribed between anoikis responsive and unresponsive cells. However, the prevalence or absence of transcripts does not always coincide with the expression of the protein product. To this end, we examined the protein expression profiles of BimEL, Puma, Bcl-XL, Mcl-1, and Bax in 527F cells detached and treated with dasatinib or DMSO and compared them to wild-type cells (Fig. 1C). Several reports have suggested that Bcl-XL is induced as the result of Src signaling and that this provides resistance to anoikis (22, 23). However, we observed little or no decrease in Bcl-XL at the time of Bax activation in either dasatinib-treated 527F or wild-type cells. Similarly, there was no significant increase in the protein levels of Bax in either of the two cell types. We did find that Mcl-1 and Bim were the most dynamically regulated proteins analyzed. In particular, Mcl-1 expression was substantially reduced whereas Bim was increased during anoikis; this response was also found in detached 527F cells treated with dasatinib indicating the relevance to a restored anoikis response by Src inhibition. Puma was moderately induced in dasatinib-treated 527F but not in wild-type cells, suggesting that Puma may not be a key regulator of anoikis.

The results from the microarray in relation to Mcl-1 and Bim were validated using semiquantitative RT-PCR in samples of wild-type and 527F cells (Fig. 1D). Transcripts of Mcl-1 were marginally decreased in dasatinib-treated 527F cells. Interestingly, there did not seem to be any decrease in the transcription of Mcl-1 in the wild-type samples, indicating that post-transcriptional regulation was responsible for the observed decrease in protein levels. In contrast, Bim transcripts were increased dramatically by detachment in wild-type and dasatinib-treated 527F cells. Bim transcription is known to be positively regulated through the transcription factor Foxo3a, which is negatively regulated by Akt (24). Therefore, the ability of Akt signaling in 527F cells to inhibit Bim expression was assessed through the use of LY294002, a phosphoinositide-3-kinase (PI3K) inhibitor. Indeed, this inhibitor restored Bim induction, indicating that the Src/Akt/Foxo3a pathway is likely

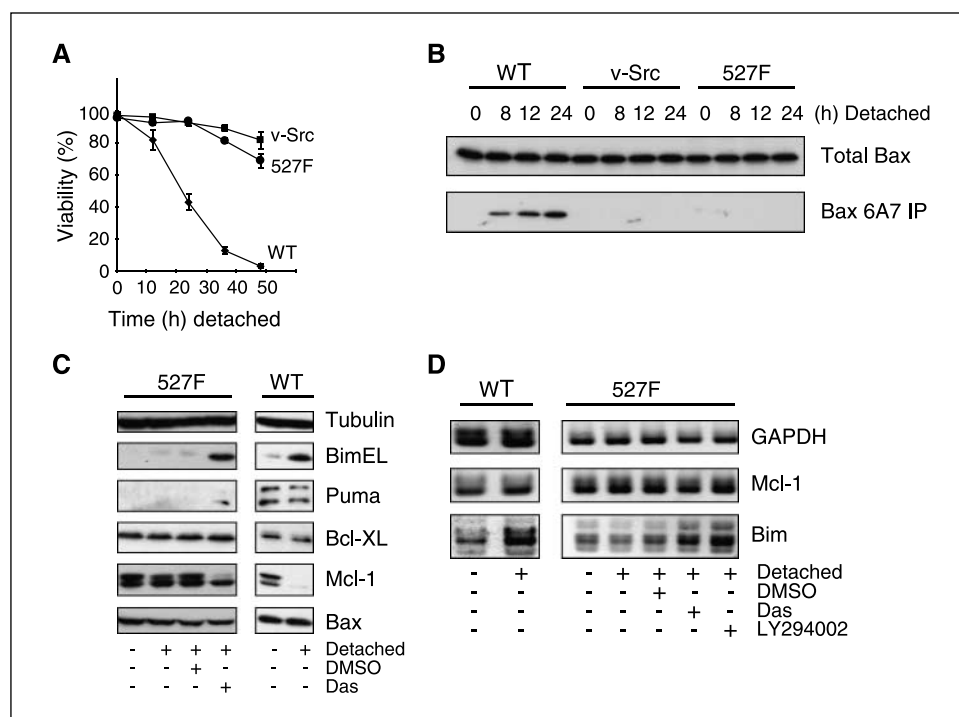


Figure 1. Constitutively active Src deregulates cell death, the activation of Bax, and expression of Bim and Mcl-1. *A* and *B*, wild-type, v-Src, and c-Src (527F) NIH3T3 cells were detached on polyHEMA-coated plates for the indicated times. Cell viability was determined by trypan blue dye exclusion assay. Conformational activation of Bax was determined by immunoprecipitation with anti-Bax 6A7 antibody. *C* and *D*, wild-type and c-Src (527F) NIH3T3 cells were cultured in normal conditions or detached on polyHEMA-coated plates with DMSO, 50 nmol/L of dasatinib (Das), or 50 μ mol/L of LY294002 for 8 h and subjected to Western blot (*C*) and semiquantitative RT-PCR (*D*) analyses.

involved in the transcriptional suppression of this proapoptotic protein.

Mcl-1 and Bim regulate detachment-induced Bax activation.

The functional importance of increased Bim expression in the anoikis response was assessed by shRNA-mediated targeted knock-down. Both wild-type and 527F cells were infected with Bim shRNA (shBim) or control retrovirus. Stable pools were detached on polyHEMA plates and their ability to initiate Bax activation and anoikis were assayed. Decreased Bim expression led to a similar decrease in the activation of Bax (Fig. 2*A*) as well as the caspase-3 activity (Fig. 2*B*) in cells cultured on polyHEMA plates. These results suggest that Bim is the major activator of Bax during anoikis. This also implies that Puma induction seen in Fig. 1*C* is of little functional relevance.

To test the functional significance of Mcl-1 repression during detachment, increasing amounts of the Mcl-1 construct were transfected into wild-type cells along with the pGL3 luciferase reporter construct. By measuring luciferase activity, we found that overexpression of Mcl-1 led to a dose-dependent suppression of cell death in detached as compared with attached conditions (Supplementary Fig. S3*A*). Bim alone was able to induce an apoptotic response in 527F cells as transfection of increasing amounts of the Bim construct led to a dose-dependent decrease in cell viability (Supplementary Fig. S3*B*). This shows that decreased Mcl-1 expression is vital to the induction of anoikis and that overexpression of Bim could induce apoptosis in 527F-expressing cells, presumably through a mechanism that activates Bax once antiapoptotic Bcl-2 members are saturated by Bim.

Anoikis is regulated by proteasomal degradation of Mcl-1.

Mcl-1 is an ephemeral protein that is degraded in a proteasome-dependent manner. This regulatory mechanism allowed us to study if stabilized endogenous Mcl-1 contributes to the inhibition of anoikis. As shown in Fig. 2*C*, the proteasome inhibitor MG132 was able to stabilize Mcl-1 in wild-type NIH3T3 cells detached on

polyHEMA in a dose-dependent manner with maximal stabilization occurring at 100 and 1,000 nmol/L. This stabilization of Mcl-1 correlated with a similar dose-dependent decrease in Bax activation. We also observed the stabilization of Mcl-1 and the complete inhibition of Bax activation in detached 527F cells treated with the combination of dasatinib and MG132 (Fig. 2*C*). The addition of MG132 to the lysate of detached wild-type cells had no effect on the ability to immunoprecipitate active Bax (data not shown). Samples from the wild-type cells detached and exposed to the MG132 gradient were also assayed for chymotrypsin-like activity and caspase-3 activity through *in vitro* protease assays. In concordance with the above results, caspase-3 activity was decreased similar to the chymotrypsin activity inhibited by MG132 (Supplementary Fig. S3*C*). The repression of Bax activation and anoikis was also observed in a similar manner using Velcade, a proteasome inhibitor currently in clinical trials (data not shown). This study identifies the ability of proteasome inhibitors to prevent Bax activation and anoikis in response to detachment.

To determine whether MG132-mediated inhibition of Bax activation was due to the stabilization of Mcl-1, but not another unidentified protein(s), retroviral shRNA targeting Mcl-1 was infected into wild-type cells to decrease its accumulation upon MG132 treatment. Three shRNA constructs were designed, of which constructs 1 and 3 (c-1 and c-3) were the most effective at inhibiting Mcl-1 expression (Fig. 2*D*). Treatment with MG132 led to the nearly complete inhibition of Bax activation in the Puro control line, but was less effective in suppressing the Bax conformational change when there was less Mcl-1 stabilized. An inverse correlation was found between the amount of Mcl-1 accumulated in MG132-treated samples and the activation of Bax. Similarly, there is decreased repression by MG132 on caspase-3 activation in Mcl-1 knockdown cells compared with control (Supplementary Fig. S3*D*). These observations strongly suggest that anoikis is dependent on the proteasomal depletion of Mcl-1.

Mcl-1 degradation elicits a robust anoikis response. Thus far it has been evident that both Mcl-1 degradation and Bim induction are key regulators of the normal anoikis response. Although overexpression of Mcl-1 could undoubtedly protect cells from anoikis (Supplementary Fig. S3A), other groups have shown that overexpression of other antiapoptotic proteins could also have the same effect (25). Therefore, the vitality of Mcl-1 degradation for anoikis induction was evaluated using retrovirally transduced NIH3T3 cells coexpressing Bcl-2, Bcl-XL, or Mcl-1 with the proapoptotic BimEL counterpart via a bicistronic message (Fig. 3A). Repression of protein translation using cycloheximide illustrated that the instability of Mcl-1 is essential for the induction of anoikis, whereas the coexpression of Bcl-2:Bim or Bcl-XL:Bim had no effect on cell death due to the maintenance of the antiapoptotic and proapoptotic balance (Fig. 3A and B). The anoikis response to Mcl-1 degradation could be completely resolved by MG132-mediated proteasome inhibition (Fig. 3C and D). We confirmed that releasing Bim from the Bcl-XL:Bim complex by ABT-737, a specific Bcl-2/Bcl-XL inhibitor, was also capable of inducing an apoptotic response (Fig. 3D). The uniquely short half-life of Mcl-1, compared with other antiapoptotic proteins such as Bcl-2 and Bcl-XL, makes this an essential element of anoikis initiation.

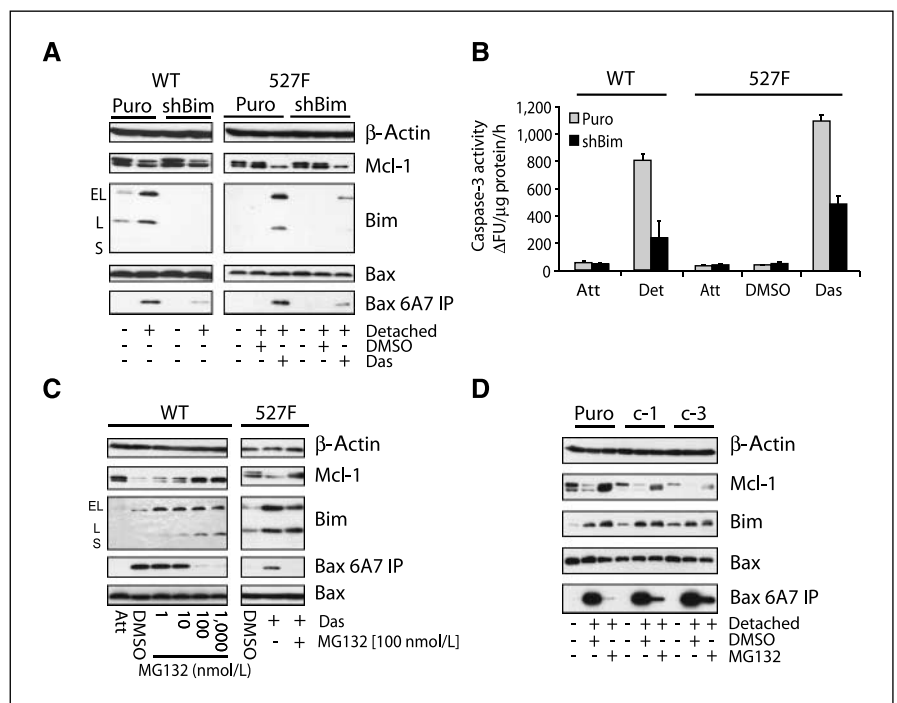
Mcl-1 degradation is mediated by GSK-3 β . The phosphorylation of Mcl-1 by GSK-3 β at Ser¹⁵⁹ is known to promote an increased turnover of Mcl-1 (15). To determine if this phosphorylation controls Mcl-1 degradation during anoikis, the GSK-3 β inhibitor TDZD-8, a non-ATP competitive inhibitor, was used to treat cells beginning immediately with detachment. As shown in Fig. 4A, TDZD-8 was able to stabilize Mcl-1 in both wild-type and 527F cells when detached or sensitized with dasatinib, respectively. This stabilization was once again associated with a decrease in Bax activation and inhibition of the apoptotic response (Fig. 4A and B). To further validate the role of GSK-3 β in the degradation of Mcl-1 induced by detachment, wild-type and GSK-3 β knockout MEFs were either attached or detached on polyHEMA plates for 12 h in

the presence of DMSO or LY294002. Detached wild-type MEFs showed a decrease in the protein levels of Mcl-1 as did treatment with LY294002 (Fig. 4C). However, the GSK-3 β -null cells did not exhibit a decrease in Mcl-1 protein levels in response to detachment, and treatment with LY294002 resulted in only a slight decrease of Mcl-1; this decrease is likely due to the functional redundancy of GSK-3 α .

To determine if phosphorylation of Ser¹⁵⁹ was required for Mcl-1 degradation during anoikis, constructs encoding the human Mcl-1 wild-type and S159A mutant were transfected into wild-type NIH3T3 cells. These cells were then detached and treated with cycloheximide to observe the degradation of Mcl-1. Figure 4D shows that the half-life of wild-type Mcl-1 is very short when compared with that of the S159A mutant. This suggests that Mcl-1 is degraded in response to a phosphorylation priming event that in turn targets the protein for ubiquitination and degradation. Moreover, detachment was found to decrease the levels of phosphorylated Akt in wild-type NIH3T3 cells (data not shown), which might explain the increased degradation of Mcl-1 regulated by GSK-3 β .

Src-regulated Akt and Erk signaling control Mcl-1 and Bim expression. Src is known to promote survival signaling through multiple pathways. Two of the most well-defined pathways controlled by Src are Akt and Erk, both of which have been implicated in anti-anoikis but debate remains over their involvement (26, 27). We therefore explored the consequences of Src, Akt, and Erk inhibition on Mcl-1 and Bim protein levels in 527F cells treated with dasatinib, LY294002, U0126, or the combination of LY294002 and U0126 during detachment (Supplementary Fig. S4A). Dasatinib inhibited signaling through both Akt and Erk, whereas treatment with LY294002 or U0126 specifically inhibited their targets' pathways. Inhibition of Akt, but not Erk1/2, resulted in a significant decrease in Mcl-1 levels but did not extend to the levels observed in dasatinib-treated cells. Also, Akt inhibition led to the appearance of multiple bands of Bim that are presumed to be Erk phosphorylated

Figure 2. Mcl-1 and Bim expression regulates anoikis. **A** and **B**, wild-type and c-Src (527F) NIH3T3 cells were infected with control (*Puro*) or Bim shRNA (*shBim*) retroviruses and selected for 14 days on puromycin. The resulting puromycin-resistant transfectants were maintained in normal culture (*Att*) or detached (*Det*) on polyHEMA-coated plates with or without DMSO or 50 nmol/L of dasatinib for 8 h and subjected to immunoprecipitation with anti-Bax 6A7 antibody (**A**) and caspase-3 activity (**B**) assays. **C**, wild-type NIH3T3 cells were maintained as attached on normal plates or detached on polyHEMA-coated plates containing DMSO or increasing amounts of MG132, whereas c-Src (527F) NIH3T3 cells were detached and treated with DMSO or 50 nmol/L of dasatinib with or without 100 nmol/L of MG132 for 8 h. Cells were then subjected to anti-Bax 6A7 immunoprecipitation/immunoblot analysis. **D**, NIH3T3 cells stably expressing Mcl-1 shRNA (*c-1* or *c-3*) or control vector (*Puro*) were left in normal culture or detached on polyHEMA-coated plates in the presence of DMSO or 100 nmol/L of MG132 for 8 h and subjected to anti-Bax 6A7 immunoprecipitation/immunoblot analysis.



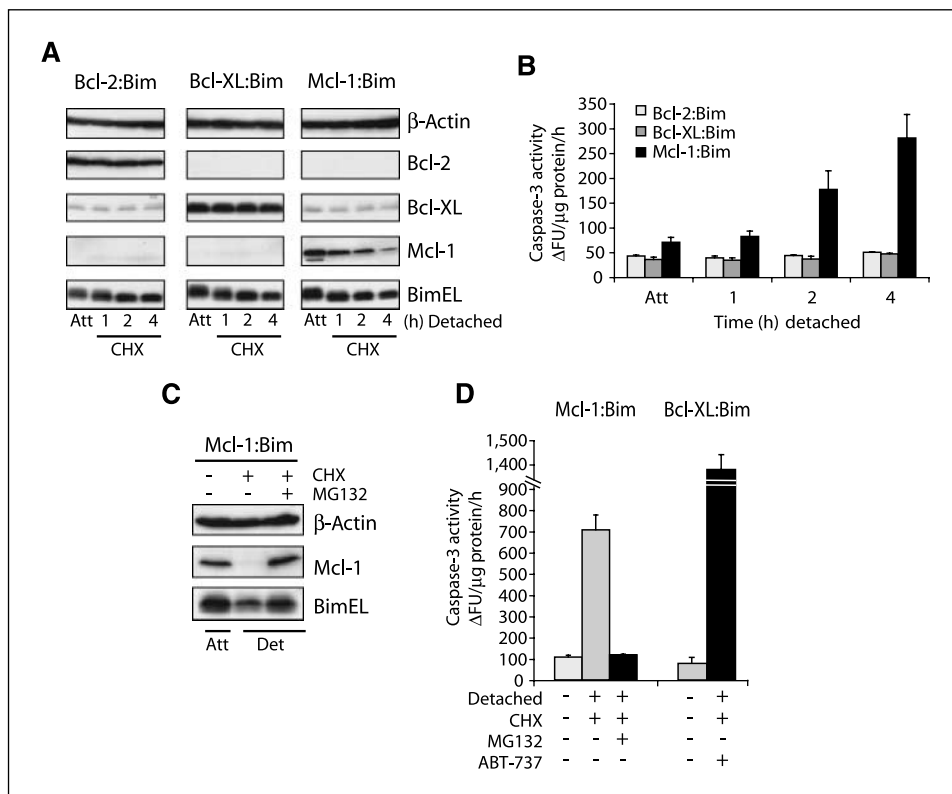


Figure 3. Mcl-1 degradation alone is sufficient to induce anoikis in the presence of Bim. *A* and *B*, NIH3T3 cells were retrovirally transduced with constructs expressing Bcl-2-IRES-Bim, Bcl-XL-IRES-Bim, or Mcl-1-IRES-Bim. Cells were untreated or pretreated with 10 μmol/L of cycloheximide (CHX) for 30 min, then detached for the indicated times in the presence of cycloheximide and analyzed for expression of the proteins by immunoblot (*A*) and caspase-3 activation (*B*). *C* and *D*, NIH3T3 cells expressing Mcl-1-IRES-Bim or Bcl-XL-IRES-Bim were untreated or pretreated for 30 min with cycloheximide (CHX) or cycloheximide plus MG132 or ABT-737, then detached for 5 h in the presence of their respective inhibitors and analyzed for protein expression and caspase-3 activation.

because U0126 inhibited these slower migrating bands and stabilized the Bim protein. Unlike dasatinib, however, treatment with LY294002, U0126, or the combination did not lead to the activation of Bax and caspase-3 (Supplementary Fig. S4A and B). It is possible that the decreasing Mcl-1 and increasing Bim by LY294002 and/or U0126 could not reach the threshold to shift the antiapoptotic and proapoptotic balance of the cell towards anoikis. To test this possibility, we used the c-3 shMcl-1 construct (Fig. 2D)

to knock down Mcl-1 expression in detached 527F cells treated with dasatinib, LY294002, U0126, or the combination of LY294002 and U0126. Knockdown of Mcl-1 led to a more anoikis-sensitive phenotype in the presence of these kinase inhibitors, as determined by caspase-3 activity (Supplementary Fig. S4C). Importantly, the activation of Bax was also found to be enhanced in Mcl-1 knockdown cells over that of controls (Supplementary Fig. S4D). This not only indicates that the level of Mcl-1 is critical for the initiation of

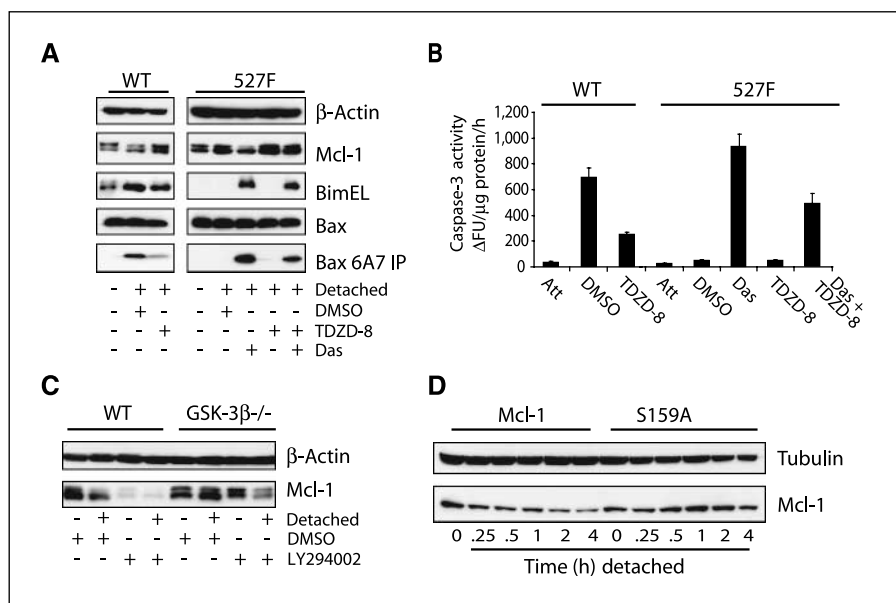


Figure 4. GSK-3β phosphorylation of Mcl-1 promotes its degradation after detachment. *A* and *B*, wild-type and c-Src (527F) NIH3T3 cells were maintained in normal culture or detached on polyHEMA-coated plates containing DMSO, 25 μmol/L of TDZD-8, 50 nmol/L of dasatinib, or both inhibitors for 8 h and subjected to anti-Bax 6A7 immunoprecipitation/immunoblot (*A*) and caspase-3 activity (*B*) assays. *C*, wild-type and GSK-3β-null MEFs were treated with DMSO or 25 μmol/L of LY294002 in normal or polyHEMA-coated plates for 12 h and Mcl-1 expression was determined by Western blot. *D*, NIH3T3 cells transfected with wild-type or S159A mutant Mcl-1 were detached on polyHEMA plates for the indicated times in the presence of cycloheximide to determine the half-life of the Mcl-1 proteins during anoikis by immunoblot analysis.

Bax activation in response to Akt and Erk inhibition, but also illustrates the multifunctional ability of Src to suppress anoikis.

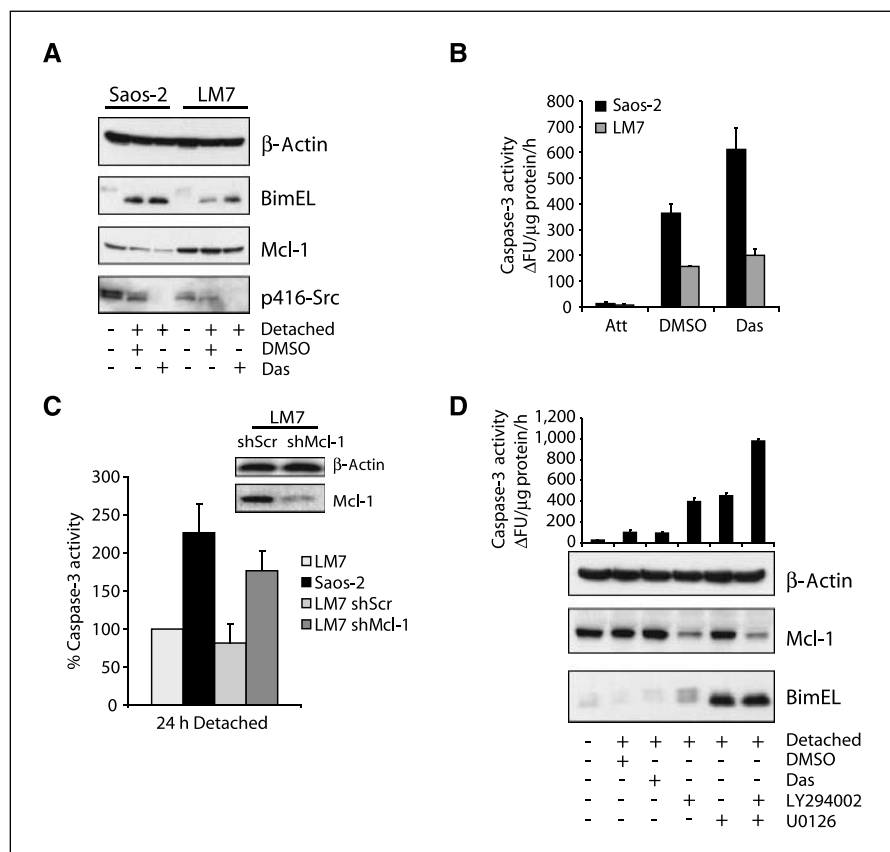
Metastatic cancers exhibit reduced Mcl-1 degradation and Bim induction. Resistance to anoikis is known to enhance the metastatic potential of cancer cells by affording them increased survival potential once detached from the ECM. Using the non-metastatic osteosarcoma cell line Saos-2 and its metastatic derivative LM7 (28), we found that parental Saos-2 cells were sensitive to anoikis which correlated with Mcl-1 degradation and Bim induction (Fig. 5A and B). However, LM7 cells exhibited increased basal levels of Mcl-1 and maintained this expression during detachment, as well as decreased induction of Bim. Inhibition of Src signaling using dasatinib in both cell lines caused Bim induction and Mcl-1 degradation and increases in caspase-3 activity. The relatively slight increase in dasatinib sensitivity in LM7 cells may be the result of increased oncogenic signaling other than Src. To determine if the stabilization of Mcl-1 in LM7 cells was required for their resistance to anoikis, we inhibited Mcl-1 expression using lentivirally delivered shRNA. Knockdown of Mcl-1 was able to restore caspase-3 activation to levels similar to parental Saos-2 cells, whereas nontargeting scrambled shRNA had no effect on anoikis compared with uninfected LM7 cells (Fig. 5C).

Similarly, the highly metastatic breast cancer MDA-MB-231 cells were also observed to be resistant to anoikis. This was correlated with the maintenance of Mcl-1 expression and repressed Bim induction (Fig. 5D, bottom), indicating that the dysregulation of the normal response of these proteins to detachment is a contributing factor to metastatic potential. To decipher the signaling pathways involved in the observed expression profiles of Mcl-1 and Bim

during detachment, we treated the cells with dasatinib, LY294002, U0126, or the combination of LY294002 and U0126. Inhibition of MEK or PI3K individually resulted in similar apoptotic indices as measured by caspase-3 activation (Fig. 5D, top). Similar to results seen in Supplementary Fig. S4A, PI3K inhibition caused a decrease in Mcl-1 expression, likely through the derepression of GSK-3 β , as well as a limited increase in Bim expression, albeit the Bim protein was highly phosphorylated and likely rapidly turned over. Inhibition of MEK with U0126 had no effect on Mcl-1 expression but did confirm an earlier report of increased Bim expression upon Erk1/2 inhibition (27). Importantly, the combinational treatment of LY294002 and U0126 led to a synergistic increase in anoikis that correlated with Mcl-1 degradation and Bim induction. The failure of dasatinib to sensitize these cells to anoikis is likely the result of independent downstream oncogenic signaling mediated by previously identified mutations in K-RAS and BRAF (29), which activate both the PI3K/Akt and MEK/Erk pathways (30).

To determine if Mcl-1 degradation alone was able to promote anoikis in the MDA-MB-231 cells similar to PI3K inhibition, we again knocked down Mcl-1 (Fig. 6A, inset) and assayed the response to detachment. After only 24 h of detachment, cells with depleted Mcl-1 displayed markedly increased caspase-3 activity, and by 48 h, contained a much higher fraction of dead cells (Fig. 6A and B). To further confirm that the loss of Mcl-1 function but not other antiapoptotic Bcl-2 members is essential for the initiation of anoikis in metastatic cancer cells, we tested the ability of ABT-737, which targets Bcl-2, Bcl-XL, and Bcl-w but not Mcl-1 (31), to induce apoptosis of detached MDA-MB-231 cells. As expected, treatment

Figure 5. Mcl-1 and Bim expression is deregulated in human metastatic cancers. A and B, Saos-2 and LM7 cells were untreated or detached on polyHEMA in the presence of DMSO or 50 nmol/L of dasatinib for 24 h. Protein expression profiles were assayed by immunoblot and apoptotic index was measured by caspase-3 activity. C, LM7 cells were infected with lentivirus containing control scrambled (*shScr*) or Mcl-1 (*shMcl-1*) shRNA constructs. Stably infected cells were analyzed for Mcl-1 expression by immunoblot (*inset*). The anoikis response of the transfectants was measured by the activation of caspase-3 in response to detachment and compared with the anoikis-resistant parental LM7 cells. D, MDA-MB-231 cells were untreated or detached on polyHEMA-coated plates containing DMSO, 50 nmol/L of dasatinib, 25 μ mol/L of LY294002, 10 μ mol/L of U0126, or the combination of LY294002 and U0126 for 24 h and subjected to immunoblot analysis with the indicated antibodies (*bottom*) and caspase-3 activity assay (*top*).



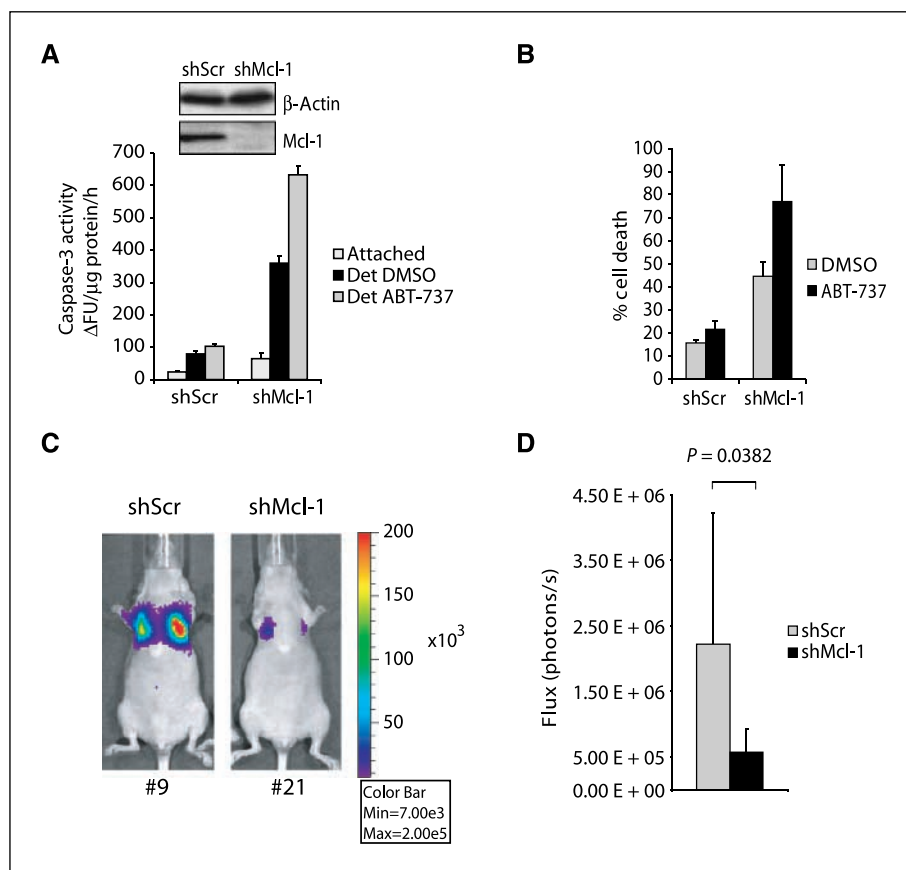


Figure 6. Mcl-1 depletion sensitizes human breast cancer cells to anoikis and reduces metastasis *in vivo*. *A* and *B*, MDA-MB-231 cells were infected with lentivirus encoding control (*shScr*) or Mcl-1 (*shMcl-1*) shRNA constructs and selected by 0.5 μg/mL of puromycin for 14 d. The knockdown of Mcl-1 was confirmed by immunoblot (*inset*). The anoikis response of *shScr* and *shMcl-1* cells cultured in the presence of DMSO or 100 nmol/L of ABT-737 was measured by caspase-3 activation (*A*) and lactate dehydrogenase release (*B*) assays after 24 or 48 h of detachment, respectively. *C* and *D*, Harlan nude mice were injected with 1×10^6 MDA-MB-231-luc-D3H2LN cells expressing control scrambled (*shScr*) or Mcl-1 (*shMcl-1*) shRNA constructs via the tail vein and imaged using the IVIS200 system 3 weeks postinjection. Representative images and bioluminescence quantified in units of photons per second; *columns*, mean; *bars*, SD ($n = 9$).

with ABT-737 was unable to trigger anoikis in control cells, although it significantly enhanced detachment-induced apoptosis of Mcl-1 knockdown cells (Fig. 6*A* and *B*). Furthermore, *in vivo* experiments showed that knockdown of Mcl-1 alone could significantly reduce tumor establishment of metastatic MDA-MB-231 cells in lungs of nude mice (Fig. 6*C* and *D*). These results strongly imply that inhibition of Mcl-1 degradation during detachment is vital to the establishment of metastatic cells.

Discussion

Despite recent advances in early detection and new therapeutic options for cancer patients, metastatic progression is attributed to 90% of human cancer fatalities (32). Anoikis is a vital regulatory mechanism that can prevent metastases in a process that requires Bax translocation to mitochondria, which is inhibited by survival kinase signaling found in many human cancers (8). In spite of our current knowledge of apoptosis, how metastatic cancers escape anoikis remains poorly defined. In this report, we are the first to provide evidence of the unique importance of Mcl-1 degradation in the anoikis response. The Mcl-1 protein rapidly undergoes proteasome-dependent degradation in normal NIH3T3 cells at very early time points after detachment, which allows the subsequently induced Bim to activate Bax. Indeed, depletion of Mcl-1 alone is not enough to activate Bax under conditions in which the induction of Bim is blocked. Conversely, stabilization of Mcl-1 by proteasome inhibition suppresses Bax activation during anoikis, whereas overexpression of Bim causes dose-dependent apoptosis. Together, these results suggest a model for anoikis in

which Mcl-1 degradation is required as a priming event to sensitize the cell towards Bax activation, which occurs in a manner that is dependent on the BH3-only protein Bim induction. These events are suppressed by active Src, Akt, and Erk1/2 signaling, thereby conferring cancer cells with activating mutations in these pathways a survival advantage upon detachment from the ECM.

The ability of cancers to inhibit anoikis is propagated by the inability of these cells to activate Bax after the loss of adhesion. Bim, a known activator of Bax, is suppressed in active Src-expressing cells through a mechanism controlled by Akt and Erk1/2 signaling pathways. The transcriptional repression of Bim in 527F cells is likely through the Akt pathway, which is known to phosphorylate the Bim transcription factor Foxo3a and promote its retention in the cytoplasm by interacting with 14-3-3 (33). BimEL is also regulated post-translationally by phosphorylation of Ser⁶⁹ by Erk1/2, which promotes its targeting to the proteasome and degradation (34). JNK is also known to control transcription and sequestration of Bim (35, 36), but upon treatment of 527F cells with JNK inhibitors, there are no significant changes in the Bim expression or apoptosis (data not shown).

Although Src can directly phosphorylate STAT3, thereby promoting the expression of Mcl-1 (37), our microarray and semiquantitative RT-PCR analyses indicate that the Mcl-1 transcripts decrease marginally during anoikis in dasatinib-sensitized 527F but not wild-type cells. At post-translational levels, however, we found that GSK-3β-mediated phosphorylation at Ser¹⁵⁹ of Mcl-1 in response to detachment promotes its rapid proteasomal degradation. Akt negatively regulates GSK-3β by phosphorylation

at Ser⁹ (38). Consistently, our studies in 527F and human metastatic cancer cells indicate that Mcl-1 expression is mainly regulated post-translationally through inhibition of GSK-3 β activity by Akt. However, in 527F cells, the lower expression of Mcl-1 and higher sensitivity to anoikis observed when treated with dasatinib compared with LY294002 suggest that other regulatory mechanisms mediated by Src, such as STAT3-dependent transcription, are also involved.

Mcl-1 degradation is required, but by itself, is insufficient to induce anoikis which requires the subsequent induction of Bim. Once there is an excess of Bim in relation to Mcl-1, the activation of Bax is initiated. These coordinated events determine the anoikis response, which are deregulated in cells with active oncogenic signaling. The comparison of human osteosarcoma cell line Saos-2 and its metastatic derivative LM7 illustrates that stabilization of Mcl-1 during detachment could afford metastatic cells considerable survival advantage. Consistent with this finding, knockdown of Mcl-1 enhances the sensitivity of metastatic LM7 and MDA-MB-231 cells to anoikis and can prevent the establishment of metastases. Likewise, repression of the PI3K/Akt and mitogen-activated protein kinase signaling pathways that control Mcl-1 stability and Bim expression can resensitize metastatic breast cancer cells to anoikis.

The unique role of Mcl-1 in the anoikis response is likely attributed to its short half-life as its depletion coincides with the commitment of the cell to anoikis. The mechanism of Mcl-1-mediated anoikis inhibition seems to be nonredundant with that of Bcl-2 or Bcl-XL as ABT-737 is unable to initiate anoikis whereas loss of Mcl-1 does. However, the failure of initiation of anoikis by inhibition of Bcl-2/Bcl-XL does not exclude the role that these antiapoptotic Bcl-2 members play in the suppression of anoikis. Indeed, treatment with ABT-737 enhances anoikis initiated by

knockdown of Mcl-1 in MDA-MB-231 cells. This is consistent with other findings that show an increased apoptotic response when Mcl-1 inhibition is combined with ABT-737 (39). Moreover, there is no significant decrease in the protein levels of Bcl-XL at early time points of anoikis in which Bax conformational change and caspase activation are observed. Therefore, Bcl-XL overexpression in cancer cells may promote viability by repressing the velocity of the apoptotic insult initiated by Mcl-1 degradation when detached from the ECM. The prolonged viability may give the cells more time to reattach to the ECM at a distal site or for the accumulation of additive mutations that can disrupt anoikis execution. Due to the unique characteristics of Mcl-1, such as a short half-life, higher affinity to Bim, and verified intricate regulation, we propose that Mcl-1 serves at the convergence point of many resultant signals downstream of detachment from the ECM that mediates the initiation of an anoikis response and the prevention of metastasis.

Acknowledgments

Received 8/16/2007; revised 9/26/2007; accepted 10/2/2007.

Grant support: NIH, American Cancer Society, and Flight Attendant Medical Research Institute.

The costs of publication of this article were defrayed in part by the payment of page charges. This article must therefore be hereby marked *advertisement* in accordance with 18 U.S.C. Section 1734 solely to indicate this fact.

We thank Abbott Laboratories (Stephen Fesik) for providing ABT-737; Douglas Green (Department of Immunology, St. Jude Children's Research Hospital, Memphis, TN), Emily Cheng (Molecular Oncology, Department of Medicine, Washington University School of Medicine, St. Louis, MO), and Ken Watanabe (Department of Bone & Joint Disease, National Center for Geriatrics & Gerontology, Obu, Aichi, Japan) for plasmids; Richard Jove (Molecular Medicine, Beckman Research Institute, City of Hope Comprehensive Cancer Center, Duarte, CA) and Jack Pledger (Department of Interdisciplinary Oncology, H. Lee Moffitt Cancer Center & Research Institute, Tampa, FL) for cell lines; and Neha K. Woods for reviewing this manuscript. Microarray analyses were performed in the Moffitt Core Facility.

References

- Hynes RO. Cell adhesion: old and new questions. *Trends Cell Biol* 1999;9:M33-7.
- Frisch SM, Francis H. Disruption of epithelial cell-matrix interactions induces apoptosis. *J Cell Biol* 1994; 124:619-26.
- Shanmugathasan M, Jothy S. Apoptosis, anoikis and their relevance to the pathobiology of colon cancer. *Pathol Int* 2000;50:273-9.
- Yawata A, Adachi M, Okuda H, et al. Prolonged cell survival enhances peritoneal dissemination of gastric cancer cells. *Oncogene* 1998;16:2681-6.
- Wei L, Yang Y, Yu Q. Tyrosine kinase-dependent, phosphatidylinositol 3'-kinase, and mitogen-activated protein kinase-independent signaling pathways prevent lung adenocarcinoma cells from anoikis. *Cancer Res* 2001;61:2439-44.
- Douma S, Van Laar T, Zevenhoven J, Mewissen R, Van Garderen E, Peepers DS. Suppression of anoikis and induction of metastasis by the neurotrophic receptor TrkB. *Nature* 2004;430:1034-9.
- Lindsten T, Ross AJ, King A, et al. The combined functions of proapoptotic Bcl-2 family members bax and bax are essential for normal development of multiple tissues. *Mol Cell* 2000;6:1389-99.
- Gilmore AP, Metcalfe AD, Romer LH, Streuli CH. Integrin-mediated survival signals regulate the apoptotic function of Bax through its conformation and subcellular localization. *J Cell Biol* 2000;149:431-46.
- Yamaguchi H, Wang HG. Bcl-XL protects BimEL-induced Bax conformational change and cytochrome C release independent of interacting with Bax or BimEL. *J Biol Chem* 2002;277:41604-12.
- Hsu Y-T, Wolter KG, Youle RJ. Cytosol-to-membrane redistribution of members of Bax and Bcl-X_L during apoptosis. *Proc Natl Acad Sci U S A* 1997;94:3668-72.
- Zimmermann KC, Bonzon C, Green DR. The machinery of programmed cell death. *Pharmacol Ther* 2001;92:57-70.
- Opferman JT, Letai A, Beard C, Sorcinelli MD, Ong CC, Korsmeyer SJ. Development and maintenance of B and T lymphocytes requires antiapoptotic MCL-1. *Nature* 2003;426:671-6.
- Nijhawan D, Fang M, Traer E, et al. Elimination of Mcl-1 is required for the initiation of apoptosis following ultraviolet irradiation. *Genes Dev* 2003;17:1475-86.
- Zhong Q, Gao W, Du F, Wang X. Mule/ARF-BP1, a BH3-only E3 ubiquitin ligase, catalyzes the polyubiquitination of Mcl-1 and regulates apoptosis. *Cell* 2005;121: 1085-95.
- Maurer U, Charvet C, Wagman AS, Dejardin E, Green DR. Glycogen synthase kinase-3 regulates mitochondrial outer membrane permeabilization and apoptosis by destabilization of MCL-1. *Mol Cell* 2006;21: 749-60.
- Koshikawa N, Maejima C, Miyazaki K, Nakagawara A, Takenaga K. Hypoxia selects for high-metastatic Lewis lung carcinoma cells overexpressing Mcl-1 and exhibiting reduced apoptotic potential in solid tumors. *Oncogene* 2006;25:917-28.
- Kim H, Rafiuddin-Shah M, Tu HC, et al. Hierarchical regulation of mitochondrion-dependent apoptosis by BCL-2 subfamilies. *Nat Cell Biol* 2006;8:1348-58.
- Yu CL, Meyer DJ, Campbell GS, et al. Enhanced DNA-binding activity of a Stat3-related protein in cells transformed by the Src oncoprotein. *Science* 1995;269: 81-3.
- Hoeflich KP, Luo J, Rubie EA, Tsao MS, Jin O, Woodgett JR. Requirement for glycogen synthase kinase-3 β in cell survival and NF- κ B activation. *Nature* 2000; 406:86-90.
- Windham TC, Parikh NU, Siwak DR, et al. Src activation regulates anoikis in human colon tumor cell lines. *Oncogene* 2002;21:7797-807.
- Valentijn AJ, Metcalfe AD, Kott J, Streuli CH, Gilmore AP. Spatial and temporal changes in Bax subcellular localization during anoikis. *J Cell Biol* 2003;162:599-612.
- Rosen K, Coll ML, Li A, Filmus J. Transforming growth factor- α prevents detachment-induced inhibition of c-Src kinase activity, Bcl-XL down-regulation, and apoptosis of intestinal epithelial cells. *J Biol Chem* 2001;276:37273-9.
- Coll ML, Rosen K, Ladeda V, Filmus J. Increased Bcl-XL expression mediates v-Src-induced resistance to anoikis in intestinal epithelial cells. *Oncogene* 2002;21: 2908-13.
- Gilley J, Coffer PJ, Ham J. FOXO transcription factors directly activate bim gene expression and promote apoptosis in sympathetic neurons. *J Cell Biol* 2003;162: 613-22.
- Rosen K, Rak J, Leung T, Dean NM, Kerbel RS, Filmus J. Activated Ras prevents downregulation of Bcl-X(L) triggered by detachment from the extracellular matrix. A mechanism of Ras-induced resistance to anoikis in intestinal epithelial cells. *J Cell Biol* 2000;149:447-56.
- Martin MJ, Melynk N, Pollard M, et al. The insulin-like growth factor I receptor is required for Akt activation and suppression of anoikis in cells transformed by the ETV6-3 chimeric tyrosine kinase. *Mol Cell Biol* 2006;26:1754-69.
- Fukazawa H, Noguchi K, Masumi A, Murakami Y,

- Uehara Y. BimEL is an important determinant for induction of anoikis sensitivity by mitogen-activated protein/extracellular signal-regulated kinase kinase inhibitors. *Mol Cancer Ther* 2004;3:1281–8.
28. Jia SF, Worth LL, Kleinerman ES. A nude mouse model of human osteosarcoma lung metastases for evaluating new therapeutic strategies. *Clin Exp Metastasis* 1999;17:501–6.
29. Hollestelle A, Elstrodt F, Nagel JH, Kallemeijn WW, Schutte M. Phosphatidylinositol-3-OH kinase or RAS pathway mutations in human breast cancer cell lines. *Mol Cancer Res* 2007;5:195–201.
30. Campbell SL, Khosravi-Far R, Rossman KL, Clark GJ, Der CJ. Increasing complexity of Ras signaling. *Oncogene* 1998;17:1395–413.
31. Oltersdorf T, Elmore SW, Shoemaker AR, et al. An inhibitor of Bcl-2 family proteins induces regression of solid tumours. *Nature* 2005;435:677–81.
32. Weigelt B, Peterse JL, van 't Veer LJ. Breast cancer metastasis: markers and models. *Nat Rev Cancer* 2005;5:591–602.
33. Brunet A, Bonni A, Zigmond MJ, et al. Akt promotes cell survival by phosphorylating and inhibiting a Forkhead transcription factor. *Cell* 1999;96:857–68.
34. Luciano F, Jacquel A, Colosetti P, et al. Phosphorylation of Bim-EL by Erk1/2 on serine 69 promotes its degradation via the proteasome pathway and regulates its proapoptotic function. *Oncogene* 2003;22:6785–93.
35. Lei K, Davis RJ. JNK phosphorylation of Bim-related members of the Bcl2 family induces Bax-dependent apoptosis. *Proc Natl Acad Sci U S A* 2003;100:2432–7.
36. Whitfield J, Neame SJ, Paquet L, Bernard O, Ham J. Dominant-negative c-Jun promotes neuronal survival by reducing BIM expression and inhibiting mitochondrial cytochrome *c* release. *Neuron* 2001;29:629–43.
37. Bowman T, Broome MA, Sinibaldi D, et al. Stat3-mediated Myc expression is required for Src transformation and PDGF-induced mitogenesis. *Proc Natl Acad Sci U S A* 2001;98:7319–24.
38. Cross DA, Alessi DR, Cohen P, Andjelkovich M, Hemmings BA. Inhibition of glycogen synthase kinase-3 by insulin mediated by protein kinase B. *Nature* 1995;378:785–9.
39. Chen S, Dai Y, Harada H, Dent P, Grant S. Mcl-1 down-regulation potentiates ABT-737 lethality by cooperatively inducing Bak activation and Bax translocation. *Cancer Res* 2007;67:782–91.