

# Exercise Diminishes the Activity of Acetyl-CoA Carboxylase in Human Muscle

David Dean, Jens R. Dugaard, Martin E. Young, Asish Saha, Demetrios Vavvas, Sven Asp, Bente Kiens, Ki-Han Kim, Lee Witters, Erik A. Richter, and Neil Ruderman

Studies in rats suggest that increases in fatty acid oxidation in skeletal muscle during exercise are related to the phosphorylation and inhibition of acetyl-CoA carboxylase (ACC), and secondary to this, a decrease in the concentration of malonyl-CoA. Studies in human muscle have not revealed a consistent decrease in the concentration of malonyl-CoA during exercise; however, measurements of ACC activity have not been reported. Thus, whether the same mechanism operates in human muscle in response to physical activity remains uncertain. To investigate this question, ACC was immunoprecipitated from muscle of human volunteers and its activity assayed in the same individual at rest and after one-legged knee-extensor exercise at 60, 85, and 100% of knee extensor  $\dot{V}O_{2max}$ . ACC activity was diminished by 50–75% during exercise with the magnitude of the decrease generally paralleling exercise intensity. Treatment of the immunoprecipitated enzyme with protein phosphatase 2A restored activity to resting values, suggesting the decrease in activity was due to phosphorylation. The measurement of malonyl-CoA in the muscles revealed that its concentration is 1/10 of that in rats, and that it is diminished (12–17%) during the higher-intensity exercises. The respiratory exchange ratio increased with increasing exercise intensity from  $0.84 \pm 0.02$  at 60% to  $0.99 \pm 0.04$  at 100%  $\dot{V}O_{2max}$ . Calculated rates of whole-body fatty acid oxidation were 121 mg/min at rest and  $258 \pm 35$ ,  $264 \pm 63$ , and  $174 \pm 76$  mg/min at 60, 85, and 100%  $\dot{V}O_{2max}$ , respectively. The results show that ACC activity, and to a lesser extent malonyl-CoA concentration, in human skeletal muscle decrease during exercise. Although these changes may contribute to the increases in fat oxidation from rest to exercise, they do not appear to explain the shift from mixed fuel to predominantly carbohydrate utilization when exercise intensity is increased. *Diabetes* 49:1295–1300, 2000

From the Diabetes Unit Section of Endocrinology and Departments of Medicine and Physiology (D.D., M.E.Y., A.S., D.V., N.R.), Boston University Medical Center, Boston, Massachusetts; the Copenhagen Muscle Research Centre (J.R.D., S.A., B.K., E.A.R.), August Krogh Institute, University of Copenhagen, Copenhagen, Denmark; the Department of Biochemistry (K.-H.K.), Purdue University, West Lafayette, Indiana; and the Division of Endocrine-Metabolism Division (L.W.), Departments of Medicine and Biochemistry, Dartmouth Medical School, Hanover, New Hampshire.

Address correspondence and reprint requests to Neil Ruderman, MD, DPhil, Boston University Medical Center, Division of Endocrinology, Evans Biomed Research Center, BioSquare II, 8th Floor, 650 Albany St., Boston, MA 02118.

Received for publication 28 October 1999 and accepted in revised form 7 April 2000.

ACC, acetyl-CoA carboxylase; AMPK, AMP-activated protein kinase; CPT1, carnitine palmitoyltransferase 1; DTT, dithiothreitol; MCC, methylcrotonyl carboxylase; PC, pyruvate carboxylase; PCC, propionyl-CoA carboxylase; PMSF, phenylmethylsulfonyl fluoride; PP2A, protein phosphatase 2A, RER, respiratory exchange ratio.

Physical activity is associated with substantial increases in both fatty acid and carbohydrate oxidation in skeletal muscle, with the relative use of the 2 fuels varying with exercise intensity (1). Thus, in overnight-fasted humans, during low-intensity exercise (30–40%  $\dot{V}O_{2max}$ ), fatty acids are the principal oxidative substrate, whereas during somewhat more intense exercise (60–70%  $\dot{V}O_{2max}$ ), the absolute rates of both fatty acid and carbohydrate oxidation are higher, but the oxidation of fatty acids relative to carbohydrate is decreased. Furthermore, during very intense ( $\geq 90\%$   $\dot{V}O_{2max}$ ) versus moderate-intensity exercise, carbohydrate oxidation is still further increased, and even the rate of fatty acid oxidation may be diminished.

Studies in both rats (2–6) and humans (7,8) indicate that the rate of carbohydrate oxidation in muscle is elevated during exercise by a coordinated series of events that lead to increases in glucose transport, glycogenolysis, glycolysis, and pyruvate dehydrogenase activity. In contrast, the mechanism by which fatty acid oxidation is increased is less clear. In rats, a reasonably compelling body of evidence suggests that it involves activation of the  $\alpha$ -2 isoform of AMP-activated protein kinase (AMPK) (9,10), which phosphorylates and inhibits the muscle isoform of acetyl-CoA carboxylase (ACC)- $\beta$  leading to a decrease in the concentration of malonyl-CoA. Malonyl-CoA is an inhibitor of carnitine palmitoyltransferase 1 (CPT1), the enzyme that controls the rate of long-chain fatty acyl-CoA transfer into mitochondria. For this reason, a decrease in its concentration should increase fatty acid oxidation, and a close correlation between the change in malonyl-CoA concentration and the rate of fatty acid oxidation in resting rat skeletal muscle has been described (11–14). Whether changes in ACC activity decrease the concentration of malonyl-CoA leading to an increase in fatty acid oxidation in human muscle during exercise is less clear. The work from Spriets laboratory (15,16) generally failed to observe decreases in malonyl-CoA in human muscle during exercise, even when rates of fatty acid oxidation were clearly increased. In addition, measurements of ACC- $\beta$ , whose activity can be altered to a much greater extent than is the concentration of malonyl-CoA during exercise (contraction) in rats (10,17), have not been reported in human muscle.

With these considerations in mind, a method was developed for studying ACC- $\beta$  in human muscle after its immunoprecipitation. The present report describes the changes in ACC- $\beta$  activity and phosphorylation in normal male volunteers after exercise at various intensities and the relationship

of these changes to alterations in the concentration of malonyl-CoA and whole-body fatty-acid oxidation.

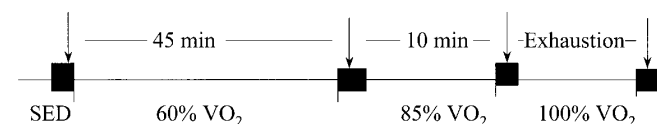
## RESEARCH DESIGN AND METHODS

**Human subjects and exercise protocol.** Thirteen normal male volunteers aged  $24 \pm 1$  years, with a mean weight of  $76.3 \pm 4.5$  kg and BMI  $23.3 \pm 1.0$  kg/m<sup>2</sup>, were studied. None of them was on medications. After an overnight fast, subjects exercised on a one-leg dynamic knee-extensor apparatus (18). During the exercise, they sat in an upright position with an ankle cuff attached to a rod that pedals a cycle ergometer on one leg. Expired air was collected in Douglas bags and analyzed using an infrared CO<sub>2</sub> analyzer (Beckman LB-2) and a paramagnetic O<sub>2</sub> analyzer (Servomex, 184). The standard exercise protocol is depicted in Fig. 1. One-legged  $\dot{V}_{O_{2max}}$  was determined at least 2 days before the actual experiment, as described by Andersen and Saltin (18). The subjects exercised for 45 min at 60%  $\dot{V}_{O_{2max}}$ , 10 min at 85%  $\dot{V}_{O_{2max}}$ , and until exhaustion (100%  $\dot{V}_{O_{2max}}$ ) with 10-min rest periods after each period of exercise. Muscle biopsies were taken from the thigh muscle immediately after each exercise period with a Bergstrom needle and immediately frozen in liquid N<sub>2</sub> within the needle. For the protein phosphatase 2A (PP2A) studies, the other 4 subjects underwent 100%  $\dot{V}_{O_{2max}}$  until exhaustion followed by muscle biopsies. Energy utilization calculations were based on indirect calorimetry calculations using the oxygen consumption and respiratory exchange ratio data collected, and assuming protein oxidation was negligible to the overall contribution of energy utilization. Calculations were performed using the respiratory exchange ratio (RER) and O<sub>2</sub> uptake (19) to determine the estimated total energy supplied from fat or carbohydrates. Where RER values were  $>1.00$ , which occurred in 3 subjects at 100% one-legged  $\dot{V}_{O_{2max}}$ , fat oxidation was assumed to be 100% and carbohydrate oxidation 0% of total O<sub>2</sub> uptake and the recalculated RER was  $0.95 \pm 0.02$ . The rate (g/min) of each nutrient oxidized was determined using 9 kcal/g for fat and 4 kcal/g for carbohydrates. Sedentary values were from a previous study in which subjects had similar characteristics as those used in this study (20).

For the purposes of developing the assay for acetyl-CoA carboxylase, a large piece of muscle was obtained from the limb of a 70-year-old man with type 2 diabetes who was undergoing a below-the-knee amputation because of gangrene. The patient had been fasted overnight and was anesthetized with serofluorane. Muscle, sampled at a site on the amputated limb at which the  $PO_2$  was equal to that measured systemically, was frozen in liquid N<sub>2</sub> and stored at  $-80^\circ\text{C}$  until use.

**Preparation of muscle for ACC studies.** The tissue processing was as described previously for rat muscle (10) with minor modifications. In brief, 30–50 mg frozen muscle was homogenized in  $10\times$  (vol/wt) of an ice-cold medium (buffer A) containing 30 mmol/l HEPES, pH 7.4, 2.5 mmol/l EGTA, 3 mmol/l EDTA, 32% glycerol, 20 mmol/l KCl, 40 mmol/l NaF, 4 mmol/l NaPPi, 1 mmol/l Na<sub>3</sub>VO<sub>4</sub>, 0.1% Igepal CA-630, 40 mmol/l  $\beta$ -glycerophosphate, 5  $\mu\text{mol/l}$  aprotinin, 5  $\mu\text{mol/l}$  leupeptin, 5  $\mu\text{mol/l}$  pepstatin, 1 mmol/l dithiothreitol (DTT), and 2 mmol/l phenylmethylsulfonyl fluoride (PMSF) using Kontes glass-on-glass homogenization tubes. Homogenates were centrifuged at 15,000g for 12 min to remove debris and the resultant supernatants were diluted in an equal volume of a medium (buffer B) containing 30 mmol/l HEPES, pH = 7.4, 2.5 mmol/l EGTA, 3 mmol/l EDTA, 70 mmol/l KCl, 20 mmol/l  $\beta$ -glycerophosphate, 20 mmol/l NaF, 2 mmol/l NaPPi, 1 mmol/l Na<sub>3</sub>VO<sub>4</sub>, 0.1% Igepal CA-630, 5  $\mu\text{mol/l}$  aprotinin, 5  $\mu\text{mol/l}$  leupeptin, 5  $\mu\text{mol/l}$  pepstatin, 1 mmol/l DTT, and 2 mmol/l PMSF after recentrifugation at 15,000g for 12 min. The protein concentration in each supernatant was determined by the Bio-Rad detergent compatible protein assay. The supernatants were then diluted to equivalent protein concentrations and a final glycerol concentration of 16% with a 1:1 mixture of buffers A and B and stored at  $-80^\circ\text{C}$  until used for enzyme analyses.

**Determination of ACC activity and streptavidin blotting.** Muscle supernatant was diluted with buffer B to yield a final protein concentration of 1 mg/ml and ACC immunoprecipitated with a polyclonal rabbit anti-human anti-



**FIG. 1. Exercise protocol.** Needle biopsies were taken prior to exercise (SED). Subjects then exercised (See RESEARCH DESIGN AND METHODS) for 45 min at 60%  $\dot{V}_{O_{2max}}$ , then 85%  $\dot{V}_{O_{2max}}$  for 10 min, and finally at 100%  $\dot{V}_{O_{2max}}$  until exhaustion. Muscle samples were obtained during 10-min rest periods and at the end of the study as indicated by the arrow and box.

body to ACC- $\beta$ , the isoform present in skeletal muscle (21) and protein A/G agarose beads (Santa Cruz, Santa Cruz, CA). After an overnight incubation at  $4^\circ\text{C}$ , the beads were centrifuged at 15,000g for  $\sim 5$  s, and the resultant supernatant was either aspirated or saved for additional analyses. The beads were washed 3 times with buffer B, twice with the ACC reaction buffer (70 mmol/l Tris-Acetate, pH = 7.5), and ACC activity was determined by the <sup>14</sup>CO<sub>2</sub> fixation method (10,22). Because of the limited amount of tissue, immunoprecipitated enzyme was initially assayed for ACC activity at 0 mmol/l citrate and then, after rewashing with buffer B and ACC reaction buffer, at higher citrate concentrations. Studies done using the muscle obtained from the open biopsy established that rewashing the immunopellets in this way did not result in a measurable change in ACC activity (results not shown).

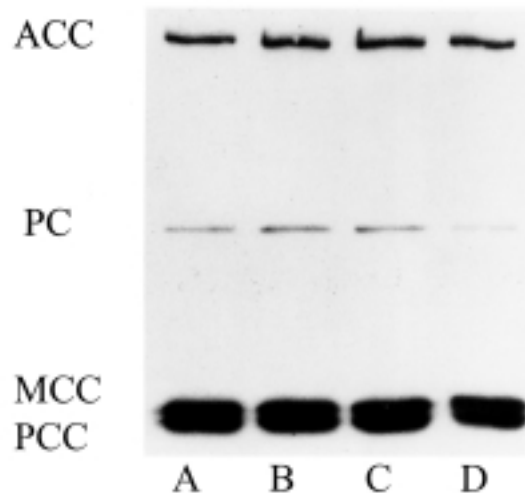
For experiments in which the effect of PP2A was determined, immunoprecipitated enzymes from sedentary and 100%  $\dot{V}_{O_{2max}}$  samples were incubated for 2.5 h with PP2A (500 mU/ml; Upstate Biotechnology) and washed with buffer B and the ACC reaction buffer before the assay of ACC activity. Immunoprecipitates, treated in an identical manner but without PP2A added, served as controls for these experiments. For Western blotting, samples denatured with Laemmli buffer (23) were subjected to SDS-PAGE and biotin-containing proteins were identified with streptavidin-horseradish peroxidase (Amersham 1:5,000) (10).

**Determination of malonyl-CoA.** Malonyl-CoA was measured radioenzymatically in perchloric acid filtrates of the whole-muscle homogenate by the method of McGarry et al. (24) as modified by Saha et al. (25).

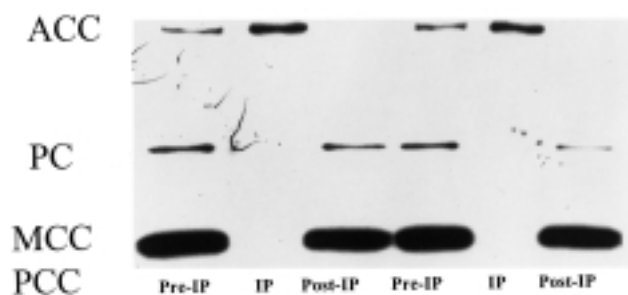
**Statistics.** A paired 1-way analysis of variance was used to assess if exercise led to differences between groups. Dunnett's posthoc test was used to determine the level of significance between each of the various exercise intensities and the sedentary group. In studies in which PP2A was used, a paired Student's *t* test was performed.

## RESULTS

**Presence of carboxylases in human muscle.** A streptavidin blot of a 15,000g supernatant revealed 3–4 bands, depending on the duration of exposure of the blot to the film (Fig. 2). Based on their estimated molecular weight and comparison with rat muscle (10), the bands were identified as ACC, pyruvate carboxylase (PC), methyl-



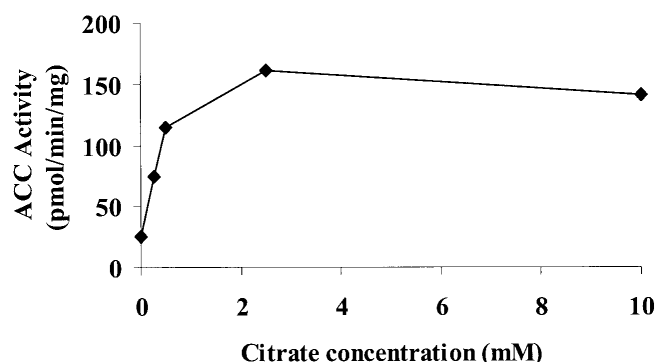
**FIG. 2. Streptavidin blot of muscle supernatants at various levels of exercise.** Proteins in the supernatant from 1 subject were separated on a 7% SDS-PAGE gel, transferred to polyvinylidene difluoride membranes, and probed with streptavidin-horseradish peroxidase (ECL) and exposed to film for detection. Similar results were obtained when muscle supernatants from 2 other subjects were studied. A, sedentary; B, 60%  $\dot{V}_{O_{2max}}$ ; C, 85%  $\dot{V}_{O_{2max}}$ ; D, 100%  $\dot{V}_{O_{2max}}$ . The identification of carboxylases on the membrane is based on molecular weight.



**FIG. 3.** The ACC- $\beta$ -specific polyclonal antibody precipitates ACC- $\beta$  that is free of contaminating carboxylases. Extracts of human muscle were incubated with the Ab and Protein A/G-agarose beads. Proteins in the pre-immunoprecipitation (Pre-IP) and post-immunoprecipitation (Post-IP) extracts and immunopellets (IP) were separated using 7% SDS-PAGE, transferred to polyvinylidene difluoride membranes, and probed with streptavidin-horseradish peroxidase. The identification of carboxylases on the membrane is based on molecular weight. See RESEARCH DESIGN AND METHODS and Figure 2 legend for details.

crotonyl carboxylase (MCC), and propionyl-CoA carboxylase (PCC). Their relative abundance was MCC = PCC > ACC > PC. Importantly, although no attempt was made to remove any gross fat from these biopsies to immediately freeze and maintain the phosphorylation status, the lack of any detectable human ACC- $\alpha$  on any of the blots strongly suggests that any contamination from adipose tissue was negligible and likely does not confound the present results. As shown in Fig. 2, after exercise of different intensities, neither the abundance of ACC nor the other biotin-containing enzymes were altered.

**Selective immunoprecipitation of ACC- $\beta$  and measurement of its activity.** A polyclonal antibody against human ACC- $\beta$  selectively and quantitatively immunoprecipitated ACC with other carboxylases remaining in the supernatant (Fig. 3). As shown in Fig. 4, the immunoprecipitated ACC was active and its activity was increased by citrate. In a sample of muscle obtained from a surgically

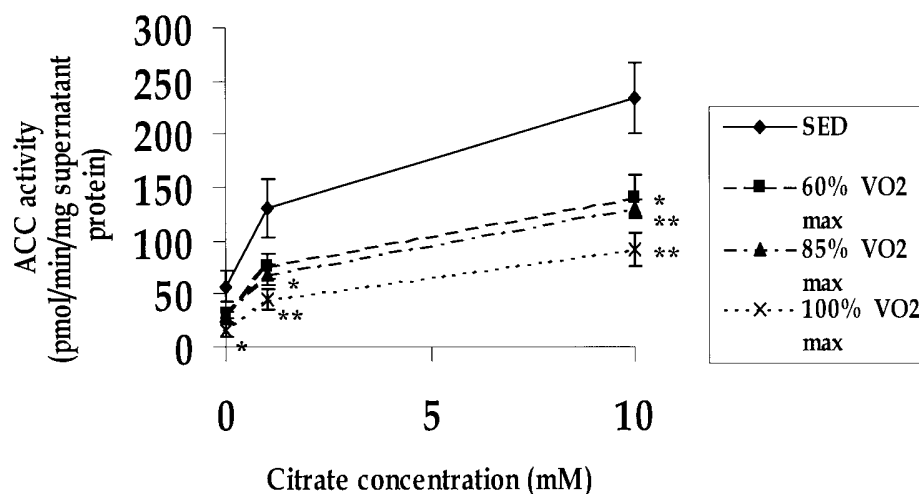


**FIG. 4.** The human ACC- $\beta$  antibody allows for ACC activity determination. The citrate activation curve was generated using a sample of muscle obtained by an open biopsy during surgery on one individual (see RESEARCH DESIGN AND METHODS). Each point represents an individual immunoprecipitation.

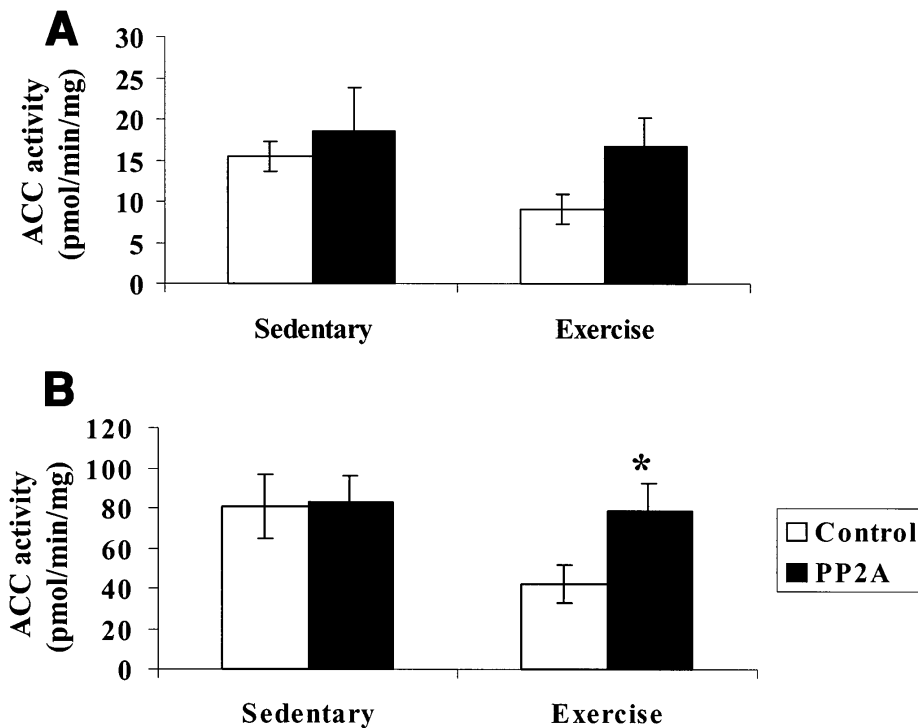
amputated limb of an anesthetized patient during surgery (RESEARCH DESIGN AND METHODS), the  $V_{max}$  of ACC was  $\sim 145$  pmol  $\cdot$  min $^{-1}$   $\cdot$  mg $^{-1}$  supernatant protein and its  $A_{0.5}$  for citrate was 0.3 mmol/l.

**Effect of exercise on ACC activity.** ACC activity decreased by 50–75% during exercise. The effect was observed at all citrate concentrations and tended to be greater with increasing exercise intensity (Fig. 5).

**Effect of phosphatase treatment.** To assess whether the decrease in ACC activity caused by physical activity was related to phosphorylation, ACC- $\beta$  immunoprecipitated from the muscle of 4 different subjects, studied at rest and after exercise at 100%  $\dot{V}O_{2max}$ , was incubated for 2.5 h with PP2A. Such treatment increased ACC- $\beta$  activity in postexercise muscle by 2- to 3-fold and eliminated the difference between control and exercised muscle (Fig. 6). In contrast, PP2A had no effect on ACC- $\beta$  activity in control muscles at 0.2 or 1.0 mmol/l. The absolute values of ACC activity measured at 0.2 and 1 mmol/l citrate (Fig. 6) were somewhat



**FIG. 5.** Exercise inhibits human skeletal muscle ACC activity at various citrate concentrations. Immunoprecipitated ACC activity was initially assayed at 0 mmol/l citrate. Thereafter, the immunopellet was washed with buffer B and ACC reaction buffer as described in RESEARCH DESIGN AND METHODS and reassayed at 1.0 mmol/l citrate and 10 mmol/l citrate. Results are means  $\pm$  SE for  $n = 5$ . \* $P < 0.05$ , \*\* $P < 0.01$  vs. sedentary values.



**FIG. 6.** Effects of PP2A on human acetyl CoA activity at 0.2 mmol/l and 1 mmol/l citrate concentration. Immunopellets had no treatment (Control) or 500 mU PP2A (PP2A) for 2.5 hours at 37°C. Afterwards, pellets were washed and assayed for ACC activity. **A:** PP2A treatment increased ACC activity in exercised groups at 0.2 mM citrate. **B:** PP2A treatment increased ACC activity in samples from exercised group with no noticeable effect in the sedentary group at 1 mmol/l citrate. Values are means  $\pm$  SE for  $n = 4$ , 1-tailed  $t$  test.  $P = 0.056$  for 0.2 mmol/l and  $P = 0.005$  for 1.0 mmol/l.

lower than those in the initial subject group (Fig. 5). The reasons for this are not known but may include variability among different subjects or the possible loss of enzyme from the immunopellet during the 2.5-h incubation in the presence or absence of PP2A.

**Concentration of malonyl-CoA and respiratory exchange ratio at rest and after exercise of different intensities.** Malonyl-CoA was assayed in the same muscles in which ACC- $\beta$  activity was determined. In agreement with earlier reports (15,16), the concentration of malonyl-CoA in human muscle was  $\sim 1/10$  that found in rats. As shown in Table 1, small but statistically significant decreases in malonyl-CoA were observed after exercise at 85% ( $-12\%$ ,  $P < 0.05$ ) and 100% ( $-17\%$ ,  $P < 0.01$ )  $\dot{V}O_{2\max}$  but not after exercise at 60%  $\dot{V}O_{2\max}$ . As expected, oxygen uptake and RER increased with increasing exercise intensity (Table 1). Thus, energy expenditure increased from  $\sim 5.56$  kJ/min (1.33 kcal/min) at rest to  $19.87 \pm$

$1.84$  ( $4.75 \pm 0.44$ ),  $25.84 \pm 1.54$  ( $6.18 \pm 0.37$ ), and  $43.57 \pm 4.38$  ( $10.4 \pm 1.05$  kcal/min) kJ/min at 60, 85, and 100%  $\dot{V}O_{2\max}$ , respectively. The calculated rates of fat oxidation increased from 113 mg/min at rest to  $258 \pm 35$ ,  $264 \pm 63$ , and  $174 \pm 76$  mg/min and carbohydrate oxidation from 76 mg/min at rest to  $609 \pm 138$ ,  $952 \pm 170$ , and  $2,213 \pm 287$  mg/min at 60, 85, and 100%  $\dot{V}O_{2\max}$ , respectively (RESEARCH DESIGN AND METHODS provides details of calculations).

#### DISCUSSION

The results indicate that the activity of ACC- $\beta$  diminishes in human muscle during exercise and that this decrease is likely to be related to an increase in its phosphorylation. Previous studies in rats have demonstrated that 30–50% decreases in malonyl-CoA are accompanied by similar or greater decreases in ACC- $\beta$  activity during both voluntary exercise (17) and contractions induced by electrical stimulation of the sciatic nerve

**TABLE 1**  
RER, oxygen uptake, and muscle malonyl-CoA concentration at various intensities of one-legged exercise

Intensity	RER	$\dot{V}O_2$ (l/min)	Malonyl-CoA (nmol/g wet wt)
Sedentary	$0.77 \pm 0.01$ (5)	$0.28 \pm 0.01$ (5)	$0.204 \pm 0.015$ (5)
60% $\dot{V}O_{2\max}$	$0.84 \pm 0.02$ (9)	$0.98 \pm 0.09$ (9)*	$0.206 \pm 0.009$ (9)
85% $\dot{V}O_{2\max}$	$0.88 \pm 0.03$ (9)†	$1.26 \pm 0.07$ (9)*	$0.179 \pm 0.013$ (9)†
100% $\dot{V}O_{2\max}$	$0.99 \pm 0.04$ (7)*	$2.09 \pm 0.21$ (7)*	$0.169 \pm 0.011$ (9)*

Data are means  $\pm$  SE ( $n$ ). Sedentary RER and  $\dot{V}O_2$  values are taken from an earlier study (Richter et al. [20]). \* $P < 0.01$  vs. sedentary values; † $P < 0.05$  vs. sedentary values.

(10). On the other hand, Odland et al. (16) reported no change in malonyl-CoA in normal human volunteers after bicycle exercise, except for a transient 30% reduction after 1 min at 35%  $\dot{V}O_{2max}$ . Because the subjects in the latter study had eaten before exercise, increases in insulin and glucose (24,26) could have countered a decrease in malonyl-CoA caused by physical activity. For this reason, we examined the effects of exercise in overnight-fasted subjects. Small but significant decreases in malonyl-CoA (12–17%) were observed after knee-extensor exercise at 85 and 100%  $\dot{V}O_{2max}$ . However, the changes were substantially smaller than those observed in rat muscle and no change was observed after exercise at 60%  $\dot{V}O_{2max}$  when fatty acid oxidation was near its maximum. This led us to examine the effects of exercise on the activity of ACC- $\beta$ , which is more dramatically diminished by contraction in rat muscle than is the concentration of malonyl-CoA (10,17).

ACC- $\beta$  activity in muscle was measured after immunoprecipitation of the ACC- $\beta$  isoform. Antibodies previously used to immunoprecipitate active ACC from rat muscle (10) did not bring down human ACC- $\beta$  levels (data not shown); however, a polyclonal antibody against human ACC- $\beta$  produced by Ha et al. (21) quantitatively immunoprecipitated ACC- $\beta$  that was both active and citrate-dependent. Assays of the immunoprecipitated enzyme revealed that its activity diminished by 50–75% during exercise and that the magnitude of the decrease generally paralleled the intensity of the physical activity. In keeping with earlier findings in rats (10), these decreases in activity were reversed by treatment with PP2A (Fig. 6) and they were not associated with a decrease in ACC- $\beta$  abundance (Fig. 2), suggesting that they were due to phosphorylation. ACC is a known target for AMPK (9). Thus, the current data suggest that AMPK was activated during muscle contractions. However, we were unable to measure the  $\alpha$ -2 AMPK activity in our human muscle lysates using an antibody against the rat muscle  $\alpha$ -2 AMPK. Using a different antibody, such an increase in  $\alpha$ -2 AMPK activity has, in fact, recently been reported (N. Fujii, T. Hayashi, M.F. Hirshman, J. Mu, S.A. Habinowski, L.A. Witters, M.J. Birnbaum, A. Thorell, L.J. Goodyear, unpublished data). Thus, the AMPK-ACC system appears to be operative in human muscle during exercise.

In spite of the 50–75% decrease in ACC activity in human muscle during exercise, only a small (12–17%) decrease in malonyl-CoA concentration, if any, was observed. This could be related to the fact that the concentration of malonyl-CoA in human muscle is 1/10 of that in rats, which may be at the limit of sensitivity for our assay. Alternatively, measurement of malonyl-CoA concentration in whole muscle may be a less sensitive indicator of its concentration in the cytosol (i.e., the compartment in which it would come in contact with CPT1) than in rats. In support of this possibility, a recent study has demonstrated that a 19% increase in the whole-muscle concentration of malonyl-CoA in normal human volunteers during a euglycemic-hyperinsulinemic clamp is associated with a substantial decrease in whole-body and presumably muscle fatty acid oxidation (27). In contrast, during a similar clamp in rats, increases of malonyl-CoA concentration in excess of 100% have been reported (26).

In both humans (0.1–0.4 nmol/l) and rats (1–4  $\mu$ mol/l), whole-tissue concentrations of malonyl-CoA are much greater than the concentration at which CPT1 is inhibited ( $K_i = 0.024$ – $0.04 \mu$ mol/l). Despite this, changes in whole-tissue malonyl-CoA correlate closely with changes in fatty acid ox-

idation in vitro (11,12) and in vivo in resting muscle (13) in rats. This finding has led to the suggestion that either a binding protein alters the effective concentration of malonyl-CoA in the vicinity of CPT1 or that malonyl-CoA is compartmented with the muscle cell (13,28,29).

Despite the relatively strong evidence that changes in ACC activity and malonyl-CoA concentration regulate fatty acid oxidation in resting muscle, a critical question is whether they do so during exercise. In fact, the evidence is inconclusive. Thus, in going from rest to 60% one-legged  $\dot{V}O_{2max}$  in the present study, an ~50% reduction in ACC activity was accompanied by more than a 2-fold increase in the rate of fatty acid oxidation, but no detectable change in malonyl-CoA concentration was observed. With more intense exercise, malonyl-CoA concentration was modestly decreased and ACC activity tended to be further diminished; however, rates of fatty acid oxidation were unchanged, and at the highest intensity of exercise, they were diminished. At higher intensities, however, the acute rise in blood lactate can contribute to a bicarbonate shift, increasing the amount of expired  $CO_2$ , independent of altered fuel utilization. This artifact will raise the measured RER, thus the true rate of fatty acid oxidation during intense exercise is likely to be greater than that calculated using RER. However, given that during high-intensity exercise malonyl-CoA concentration and ACC activity are at their nadir, it seems likely that factors other than changes in ACC activity and malonyl-CoA concentration must be involved for the shift in fuel utilization during intense exercise. These factors could include the following: 1) increased activation of glucose transport (30,31) and key enzymes of glycolysis (31), glycogenolysis (31,32), and glucose oxidation (e.g., pyruvate dehydrogenase) (32,33); 2) a reduction in the concentrations of carnitine, CoASH, or palmitoyl-CoA (33,34) and substrates that are necessary for fatty acid oxidation; and 3) inhibition of 3-ketoacyl-CoA thiolase, an enzyme involved in the  $\beta$ -oxidation of fatty acids (34). Another factor could be the shift from the use of type 1 to type 2b muscle fibers, which are more glycolytic and have a lower capacity for fatty acid oxidation during very intense exercise.

In conclusion, the results indicate that ACC activity is diminished because of phosphorylation in human muscle during exercise at all levels of intensity. This should lead to decreases in the concentration of malonyl-CoA that in turn disinhibit CPT1 and enhance fatty acid oxidation. However, the only detectable reductions in whole-muscle malonyl-CoA concentration occurred at the 2 highest exercise intensities, at which the rates of fatty acid oxidation were either similar or somewhat lower than during exercise of more modest intensity. Whether this indicates that whole-muscle concentration of malonyl-CoA in humans is not a sensitive indicator of its cytosolic concentration remains to be determined.

#### ACKNOWLEDGMENTS

This study was supported in part by USPHS Grants DK49147, DK19514, and T32DK07201, and an American Diabetes Mentor-based fellowship (N.R.), National Institutes of Health Grant DK35712 (L.W.), and the Danish National Research Fund Grant 504-14 (E.A.R., B.K.). D.D. is the recipient of a post-doctoral fellowship from the Juvenile Diabetes Foundation International. J.R.D. is a recipient of a post-doctoral fellowship from the Carlsberg Foundation.

The authors thank Dr. Keith Tornheim for his advice and constructive criticism.

## REFERENCES

- Gollnick PD, Saltin B: Fuel for muscular exercise: role of fat. In *Exercise, Nutrition, and Metabolism*. Horton ES, Terjung RL, Eds. New York, Macmillan, 1988, p. 72–88
- Berger M, Hagg SA, Goodman MN, Ruderman NB: Glucose metabolism in perfused skeletal muscle: effects of starvation, diabetes, fatty acids, acetoacetate, insulin and exercise on glucose uptake and disposition. *Biochem J* 158:191–202, 1976
- Garetto LP, Richter EA, Goodman MN, Ruderman NB: Enhanced muscle glucose metabolism following exercise in the rat: the two phases and their relation to glycogen depletion. *Am J Physiol* 246:E471–E475, 1984
- Hagg SA, Taylor SI, Ruderman NB: Glucose metabolism in perfused skeletal muscle: pyruvate dehydrogenase activity in starvation, diabetes, and exercise. *Biochem J* 158:203–210, 1976
- Richter EA, Ruderman NB, Gavvas H, Belur ER, Galbo H: Muscle glycogenolysis during exercise: dual control by epinephrine and contractions. *Am J Physiol* 242:E25–E32, 1982
- Sonne B, Galbo H: Carbohydrate metabolism during and after exercise in rats: studies with radioglucose. *J Appl Physiol* 59:1627–1639, 1985
- Essen B, Kaijser L: Regulation of glycolysis in intermittent exercise in man. *J Physiol* 281:499–511, 1978
- Young DR, Pelligra R, Shapira J, Adachi RR, Skrettingland K: Glucose oxidation and replacement during prolonged exercise in man. *J Appl Physiol* 23:734–741, 1967
- Winder WW, Hardie DG: AMP-activated protein kinase, a metabolic master switch: possible roles in type 2 diabetes. *Am J Physiol* 277:E1–E10, 1999
- Vavvas D, Apazidis A, Saha AK, Gamble J, Patel A, Kemp BE, Witters LA, Ruderman NB: Contraction-induced changes in acetyl-CoA carboxylase and activation of AMP-activated protein kinase in muscle during exercise. *J Biol Chem* 272:13255–13261, 1997
- Merrill GF, Kurth EJ, Hardie DG, Winder WW: AICA riboside increases AMP-activated protein kinase, fatty acid oxidation, and glucose uptake in rat muscle. *Am J Physiol* 273:E1107–E1112, 1997
- Muoio DM, Dohm GL, Fiedorek FT Jr, Tapscott EB, Coleman RA: Leptin directly alters lipid partitioning in skeletal muscle. *Diabetes* 46:1360–1363, 1997
- Chien D, Dean D, Saha AK, Flatt JP, Ruderman NB: Malonyl CoA content and distribution and fatty-acid oxidation in rat muscle and liver in vivo. *Am J Physiol*. In press
- Alam N, Saggerson ED: Malonyl CoA and regulation of fatty acid oxidation in soleus muscle. *Biochem J* 334:233–241, 1998
- Odland LM, Heigenhauser GJ, Lopaschuk GD, Spriet LL: Human skeletal muscle malonyl-CoA at rest and during prolonged submaximal exercise. *Am J Physiol* 270:E541–E544, 1996
- Odland LM, Howlett RA, Heigenhauser GJ, Hultman E, Spriet LL: Skeletal muscle malonyl-CoA content at the onset of exercise at varying power outputs in humans. *Am J Physiol* 274:E1080–E1085, 1998
- Rasmussen BB, Winder WW: Effect of exercise intensity on skeletal muscle malonyl-CoA and acetyl-CoA carboxylase. *J Appl Physiol* 83:1104–1109, 1997
- Andersen P, Saltin B: Dynamic knee extension as model for study of isolated exercising muscle in humans. *J Appl Physiol* 59:1647–1653, 1985
- Kinney JM: Food as fuel: the development of concepts. In *Modern Nutrition in Health and Disease*. Shils ME, Young VR, Eds. Philadelphia, Lea and Febiger, 1988, p. 516–532
- Richter EA, Mikines KJ, Galbo H, Kiens B: Effect of exercise on insulin action in human skeletal muscle. *J Am Physiol* 66:876–885, 1989
- Ha J, Lee JK, Kim K-S, Witters LA, Kim K-H: Cloning of human acetyl-CoA carboxylase- $\beta$  and its unique features. *Proc Natl Acad Sci USA* 93:11466–11470, 1996
- Witters LA, Watts TD, Daniels DL, Evans J: Insulin stimulates the dephosphorylation and activation of acetyl CoA carboxylase. *Proc Natl Acad Sci USA* 85:5473–5477, 1988
- Laemmli UK: Cleavage of structural proteins during the assembly of the head of bacteriophage T4. *Nature* 227:680–685, 1970
- McGarry JD, Stark MJ, Foster DW: Hepatic malonyl CoA levels of fed, fasted and diabetic rats as measured using a simple radioisotopic assay. *J Biol Chem* 253:8291–8293, 1978
- Saha AK, Vavvas D, Kurowski TG, Apazidis A, Shafirir E, Witters LA, Ruderman NB: Malonyl-CoA regulation in skeletal muscle: its link to cell citrate and the glucose-fatty acid cycle. *Am J Physiol* 272:E641–E648, 1997
- Saha AK, Laybutt DR, Dean D, Vavvas D, Sebokova E, Ellis B, Klimes I, Draegen EW, Shafirir E, Ruderman NB: Cytosolic citrate and malonyl-CoA regulation in rat muscle in vivo. *Am J Physiol* 276:E1030–E1037, 1999
- Bävenholm PN, Pigon J, Saha AK, Ruderman NB, Efendic S: Fatty acid oxidation and the regulation of malonyl CoA in human muscle. *Diabetes* 49:1078–1083, 2000
- McGarry JD, Brown NF: The mitochondrial carnitine palmitoyltransferase system: from concept to molecular analysis. *Eur J Biochem* 244:1–14, 1997
- Ruderman NB, Saha AK, Vavvas D, Witters LA: Malonyl-CoA, fuel sensing, and insulin resistance. *Am J Physiol* 276:E1–E18, 1999
- Goodyear LJ, Kahn BB: Exercise, glucose transport, and insulin sensitivity. *Annu Rev Med* 49:235–261, 1998
- Stanley WC, Connert RJ: Regulation of muscle carbohydrate metabolism during exercise. *FASEB J* 5:2155–2159, 1991
- Howlett RA, Parolin ML, Dyck DJ, Hultman E, Jones NL, Heigenhauser GJF, Spriet LL: Regulation of skeletal muscle glycogen phosphorylase and PDH at varying exercise power outputs. *Am J Physiol* 275:R418–R425, 1998
- Putman CT, Spriet LL, Hultman E, Lindinger MI, Lands LC, McKelvie RS, Cederblad G, Jones NL, Heigenhauser GJF: Pyruvate dehydrogenase activity and acetyl group accumulation during exercise after different diets. *Am J Physiol* 265:E752–E760, 1993
- Winder WW: Intramuscular mechanisms regulating fatty acid oxidation during exercise. In *Skeletal Muscle Metabolism in Exercise and Diabetes*. Richter EA, Kiens B, Galbo H, Saltin B, Eds. Plenum, New York, 1998, p. 239–248