

## Plasma Circulating Tumor DNA in Pancreatic Cancer Patients Is a Prognostic Marker

Daniel Pietrasz<sup>1,2,3</sup>, Nicolas Pécuchet<sup>2</sup>, Fanny Garlan<sup>2</sup>, Audrey Didelot<sup>2</sup>, Olivier Dubreuil<sup>4</sup>, Solène Doat<sup>4</sup>, Françoise Imbert-Bismut<sup>5</sup>, Mehdi Karoui<sup>1,3</sup>, Jean-Christophe Vaillant<sup>1,3</sup>, Valérie Taly<sup>2</sup>, Pierre Laurent-Puig<sup>2</sup>, and Jean-Baptiste Bachet<sup>2,3,4</sup>

### Abstract

**Purpose:** Despite recent therapeutic advances, prognosis of patients with pancreatic adenocarcinoma remains poor. Analyses from tumor tissues present limitations; identification of informative marker from blood might be a promising alternative. The aim of this study was to assess the feasibility and the prognostic value of circulating tumor DNA (ctDNA) in pancreatic adenocarcinoma.

**Experimental Design:** From 2011 to 2015, blood samples were prospectively collected from all consecutive patients with pancreatic adenocarcinoma treated in our center. Identification of ctDNA was done with next-generation sequencing targeted on referenced mutations in pancreatic adenocarcinoma and with picoliter droplet digital PCR.

**Results:** A total of 135 patients with resectable ( $n = 31$ ; 23%), locally advanced ( $n = 36$ ; 27%), or metastatic ( $n = 68$ ; 50%) pancreatic adenocarcinoma were included. In patients with

advanced pancreatic adenocarcinoma ( $n = 104$ ), 48% ( $n = 50$ ) had ctDNA detectable with a median mutation allelic frequency (MAF) of 6.1%. The presence of ctDNA was strongly correlated with poor overall survival (OS; 6.5 vs. 19.0 months;  $P < 0.001$ ) in univariate and multivariate analyses (HR = 1.96;  $P = 0.007$ ). To evaluate the impact of ctDNA level, patients were grouped according to MAF tertiles: OS were 18.9, 7.8, and 4.9 months ( $P < 0.001$ ). Among patients who had curative intent resection ( $n = 31$ ), 6 had ctDNA detectable after surgery, with an MAF of 4.4%. The presence of ctDNA was associated with a shorter disease-free survival (4.6 vs. 17.6 months;  $P = 0.03$ ) and shorter OS (19.3 vs. 32.2 months;  $P = 0.027$ ).

**Conclusions:** ctDNA is an independent prognostic marker in advanced pancreatic adenocarcinoma. Furthermore, it arises as an indicator of shorter disease-free survival in resected patients when detected after surgery. *Clin Cancer Res*; 23(1); 116–23. ©2016 AACR.

### Introduction

Pancreatic adenocarcinoma is a leading cause of cancer-related mortality in western countries and is predicted to become the second leading cause of cancer-related deaths in 2020 (1, 2). Surgery remains the cornerstone of treatment for patients with resectable pancreatic adenocarcinoma and the only curative treatment. The consequence of aggressive growth, early dissemination, and lack of early symptoms is that 80% of patients are diagnosed at late clinical stages (3). Despite recent improvements with new

chemotherapy protocols, such as FOLFIRINOX or gemcitabine plus *nab*-paclitaxel (4, 5), patients' prognosis remains very poor. Many serologic markers have been tested, like carbohydrate antigen 19-9 (CA 19-9), but none is highly prognostic in pancreatic adenocarcinoma (6). These tumors are characterized by tumor-specific genetic and epigenetic changes in DNA, including frequent mutations in *CDKN2A*, *SMAD4*, *TP53*, or *KRAS* genes (7–9), which can be used as potential markers. However, their widespread use is limited by the difficulty in obtaining tissues from patients using endoscopic techniques and because only 20% of patients present a resectable tumor. In this context, a prognostic noninvasive blood test for pancreatic adenocarcinoma would be very valuable.

Measuring tumor-specific alterations in blood nucleic acids offers an interesting approach. In this context, circulating tumor DNA (ctDNA) has produced interesting results for a wide range of cancers (10, 11). The fraction of patients with detectable plasmatic ctDNA as well as its concentration increased with tumor stage (12). Recent studies demonstrated the prognostic impact of ctDNA in metastatic colorectal cancer (13, 14). In fact, early changes in ctDNA during first-line chemotherapy have been shown to predict the later radiologic response (15).

Recent studies demonstrated a strong correlation between genomic alterations found in pancreatic tumors by sequencing and those found after characterization of DNA extracted from plasma of the same patients (16). ctDNA has also been evaluated

<sup>1</sup>Department of Digestive and Hepatobiliary Surgery, Pitié-Salpêtrière Hospital, Paris, France. <sup>2</sup>Université Paris Sorbonne Cité, INSERM UMR-S1147 MEPPOT, CNRS SNC5014, Centre Universitaire des Saints-Pères, Paris, France. Equipe labélisée Ligue contre le Cancer. <sup>3</sup>Sorbonne University, UPMC University, Paris 06, France. <sup>4</sup>Gastroenterology and Digestive Oncology Department, Pitié-Salpêtrière Hospital, Paris, France. <sup>5</sup>Department of Metabolic Biochemistry, Pitié-Salpêtrière Hospital, Paris, France.

**Note:** Supplementary data for this article are available at Clinical Cancer Research Online (<http://clincancerres.aacrjournals.org/>).

**Corresponding Author:** Jean-Baptiste Bachet, Department of Gastroenterology and Digestive Oncology, Pitié-Salpêtrière Hospital, Sorbonne University, UPMC University, 47-83 Boulevard de l'Hôpital, Paris 75013, France. Phone: 331-4216-1041; Fax: 331-4216-1238; E-mail: jean-baptiste.bachet@aphp.fr

**doi:** 10.1158/1078-0432.CCR-16-0806

©2016 American Association for Cancer Research.

### Translational Relevance

The possibilities of translational research in pancreatic adenocarcinoma have been limited during recent years by the difficulty in obtaining sufficient tumor tissue, in quantity and quality. The identification of biological markers from blood could help to overcome this issue. Circulating tumor DNA (ctDNA) is one of the most promising blood biomarkers, providing information about molecular abnormalities and is associated with a prognostic and/or predictive value in others malignancies. Our study is the first to show that targeted NGS can be used for the detection of ctDNA in a routine procedure, across a large gene panel, and with concordant results obtained with picoliter droplet-based digital PCR. Our work highlights that the presence of ctDNA appears as an independent prognostic factor at all stages of pancreatic adenocarcinoma, in both advanced diseases and after curative intent resection. The described procedure offers great potential as a new, simple, and noninvasive strategy for patients' care and follow-up.

as a diagnostic marker to improve CA 19-9 value (17). By combining *KRAS* mutations in ctDNA with CA 19-9 levels, Dabritz and colleagues were able to diagnose pancreatic adenocarcinoma with a sensitivity of 91% (18). Despite these results, little information exists on the prognostic value of ctDNA (16, 19, 20).

The aim of the current study was to evaluate the feasibility of the detection of ctDNA and the prognostic value of ctDNA in patients with pancreatic adenocarcinoma.

## Patients and Methods

### Sample extraction and clinicopathologic data

From January 2011 to May 2015, plasmas of all consecutive patients with histologically proven pancreatic adenocarcinoma, receiving first-line chemotherapy protocol, were prospectively collected in the Pitié Salpêtrière Hospital (Paris, France), including resectable, locally advanced, and metastatic stages. Blood samples were collected just before (i) the first cycle of adjuvant treatment, after surgical resection in patients who had curative resection, or (ii) the first cycle of chemotherapy in patients with locally advanced or metastatic disease. All the patients signed an informed consent form, approved by the ethics committee (CPP Ile-de-France 2014/59NICB). The following data were collected in a prospective database: clinical and pathologic characteristics (gender, age, medical history, date of diagnosis, location of the primary tumor, primary tumor diameter, tumor differentiation grade, and stage of the disease), follow-up data (date of primary resection, date and type of relapse, date of diagnosis of metastatic disease, date and type of chemotherapy regimen, date and type of chemoradiotherapy, date of death, or last follow-up) and biological data (CEA, CA 19-9, albuminemia, and bilirubinemia).

### DNA extraction from the plasma

Blood samples (9 mL) were withdrawn from a central catheter and placed in EDTA tubes. The collected samples were centrifuged at 3,500 rpm for 15 minutes at 4°C within 3 hours of blood draw. Plasma was stored at -80°C until further use. DNA was extracted from plasma with QIAamp Circulating Nucleic Acid Kit (Qiagen) according to the manufacturer's instructions. Incubation with

proteinase K was performed for 30 minutes at 68°C. Extracted DNA from 2 mL of plasma was eluted with 50 µL buffer AVE and stored at -80°C. DNA quantity was assessed using the Qubit dsDNA HS (high sensitivity) Assay Kit (Thermo Fisher).

### Next-generation sequencing

Sequencing libraries were prepared from circulating-free DNA using Ion AmpliSeq Colon and Lung Cancer Research Panel v2 (Thermo Fisher; ref. 21). According to the manufacturer's protocols, 10 ng of DNA for each sample was used as input for library preparation with the Ion AmpliSeq Library Kit 2.0 (Thermo Fisher). The pooled barcoded libraries (maximum 96) were processed on Ion Chef System using the Ion PI Hi-Q Chef Kit (A27198) and sequenced on the Ion Proton System using an Ion PI Chip Kit v3 (A26771). The next-generation sequencing (NGS) analysis (see Supplementary Data File S1) has been specifically developed to detect low-allele frequency mutations, the sensitivity and specificity of which have been validated in positive and negative controls (22).

### Droplet-based digital PCR

All plasma samples were screened for the three most frequent *KRAS* mutations in pancreatic adenocarcinoma (i.e., p.G12V, p.G12D, and p.G12R) by picoliter droplet-based digital PCR (dPCR) using RainDrop system (RainDance Technologies). In addition, all additional *KRAS* mutations detected by NGS sequencing were analyzed. This system is based on the use of aqueous picoliter-size droplets separated by oil in microfluidic systems acting as independent PCR reactors (23). Using this system, single target DNA molecules were compartmentalized in picoliter droplets together with validated fluorogenic TaqMan probes specific for mutated and wild-type *KRAS*, and all reagents were needed for PCR amplification (24, 25). After thermocycling, the fluorescence of each droplet was measured. The amplification of mutant DNA gives a green fluorescent droplet, whereas the amplification of wild-type DNA gives a red fluorescent droplet. The ratio of mutant to wild-type DNA was determined from the ratio of green to red droplets. This strategy is both highly quantitative and highly sensitive.

Analyses were performed as described previously (25). Briefly, after testing all samples using the RainDrop system, data from cluster plots were analyzed with RainDrop Analyst software following standard procedures. Positive control DNA from cell line bearing the mutant allele was used as a control sample to set the gates (23). These gates were applied across all samples evaluated with each assay.

### ctDNA monitoring

To evaluate the predictive value of ctDNA, we monitored a subgroup of patients ( $n = 8$ ) at the time of inclusion and at different time points during the first-line treatment. Then, we compared ctDNA levels and radiologic findings during oncologic follow-up.

### Statistical analysis

The demographic, pre-, and perioperative characteristics of patients were compared by the  $\chi^2$  or Fisher exact test. Continuous data were analyzed with the independent-samples *t* test. The cut-off date for the analysis was October 2015. Survival rates were calculated using the Kaplan–Meier method (26). Overall survival (OS) was calculated from the date of diagnosis until death from

**Table 1.** Demographic and clinicopathologic characteristics of study population

Variable	Total N = 135	Resectable n = 31	LA n = 36	Metastatic n = 68	P
Sex					ns
Male	85 (63%)	17 (62%)	24 (66%)	44 (65%)	
Female	50 (37%)	14 (38%)	12 (34%)	24 (35%)	
Age, median (range), y	65.6 (39.2–87.3)	67.9 (46.0–85.1)	64.7 (40.5–84.6)	66.9 (39.2–87.3)	ns
Body mass index, (range), kg/m <sup>2</sup>	23.3 (14.5–42.3)	24.3 (19.1–32.5)	24.3 (16.7–38.2)	22.2 (14.5–42.3)	ns
Tumor location					ns
Head and isthmus	94 (70%)	24 (77%)	24 (67%)	46 (68%)	
Body	18 (13%)	3 (10%)	5 (14%)	10 (15%)	
Tail	23 (17%)	4 (13%)	7 (19%)	12 (17%)	
Differentiation grade (n = 98)					ns
Well	31 (32%)	11 (35%)	10 (43%)	10 (23%)	
Moderate	39 (40%)	10 (32.5%)	7 (31%)	22 (50%)	
Poor	28 (28%)	10 (32.5%)	6 (26%)	12 (27%)	
Baseline CA 19-9, median (range), IU/mL	238.0 (0.6–636,000)	26.0 (0.6–2,225)	179.0 (1.0–10,970)	2,748.0 (1.5–636,000)	<0.001

NOTE: Bold italic font indicates statistically significant *P* value.

Abbreviation: LA, locally advanced tumors.

any cause. Disease-free survival (DFS) was calculated from the date of surgery until first recurrence or death.

The Cox proportional hazards regression model was used to perform univariate and multivariate analyses with 95% confidence interval (CI). Multivariate analysis was performed with variables associated with the outcome in univariate analysis at a *P* value of <0.1. All statistical analyses were performed using SPSS software version 21.0 (SPSS Inc.). A *P* value ≤0.05 was considered as significant.

## Results

### Study population

A total of 135 patients with resectable (*n* = 31; 23%), locally advanced (*n* = 36; 27%), or metastatic (*n* = 68; 50%) pancreatic adenocarcinoma were included in this prospective study (Table 1). Median age of patients was 65.6 years (range, 39.2–87.3). There was no difference between the three groups in demographic and biological characteristics except for baseline CA 19-9 (*P* < 0.001). Median coverage depth of sequencing was 5,813 reads (range, 842–15,803). Mean and SD of free plasma DNA concentration was 92 ± 201 ng/mL, with 52.5 ± 79.5 ng/mL in patients with resectable tumor, and 105.8 ± 227.25 ng/mL in advanced pancreatic adenocarcinoma (*P* = 0.05).

### DNA sequencing

In patients with advanced pancreatic adenocarcinoma (*n* = 104), 50 (48%) of them had ctDNA detectable by at least one cancer-specific gene mutation with an MAF of 6.1% (range, 0.1–65.4). Of this group, 43 (41.3%) had a *KRAS* mutation (G12D *n* = 18; G12V *n* = 18; G12R *n* = 4; G12C *n* = 1; Q61H *n* = 2). *TP53*, *SMAD4*, *NRAS*, *PIK3CA*, and *STK11* gene mutations were detected in 23, 8, 2, 1, and 1 cases, respectively. In the group of patients with detectable ctDNA, 43 (86%) had a *KRAS* mutation, and 27 (54%) had at least two mutations detected (Fig. 1). ctDNA detection was strongly correlated to grade of tumor differentiation: 65% of patients in cases of undifferentiated tumors versus 58% in moderately differentiated versus only 30% in well-differentiated tumors (*P* = 0.036 and *P* = 0.042). Median CA19-9 was 380 IU/mL in patients with undetectable and 2,748 IU/mL in patients with detectable ctDNA (*P* = 0.015). Forty-four patients (64.7%) with metastatic disease had detectable ctDNA in comparison with only 6 patients (16.6%) with locally advanced pan-

creatic adenocarcinoma (*P* < 0.001). In the subgroup of metastatic patients, no significant correlation was found between the presence of ctDNA and the number of metastatic sites (*P* = 0.13).

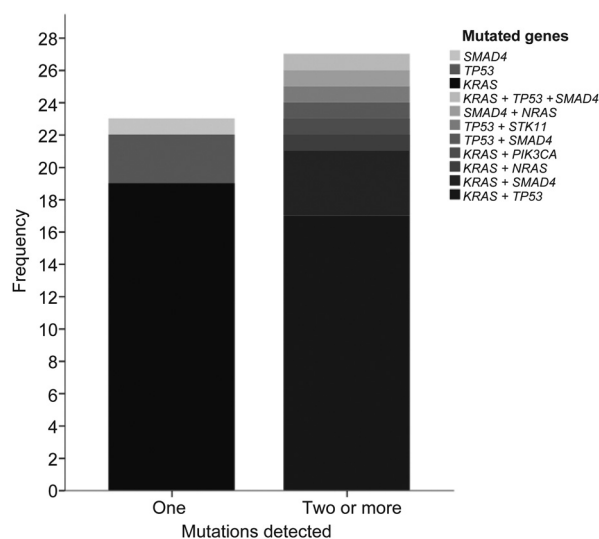
In patients who had curative resection (*n* = 31), ctDNA was detected in 6 of them (19%), with a median MAF of 4.4% (range, 0.7–8.7). *TP53* mutation was observed in 4 cases, *KRAS* and *TP53* mutations in 1 case, and *ERBB4* mutation in 1 case.

### Correlation between NGS and dPCR

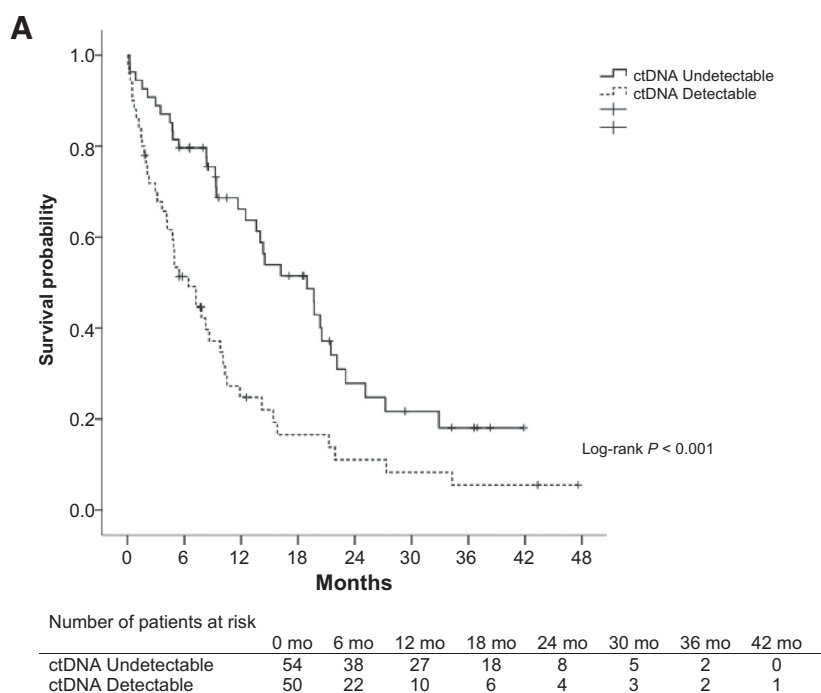
All *KRAS* mutations detected by NGS were confirmed by droplet-based dPCR in microfluidics. One patient, considered as negative after NGS, was detected positive with dPCR for the *KRAS* G12D mutation, with an MAF of 0.61%. Correlation between the two technics revealed a high concordance with *R*<sup>2</sup> of 0.94 (Supplementary Data File S2).

### Prognostic value of ctDNA in advanced pancreatic adenocarcinoma

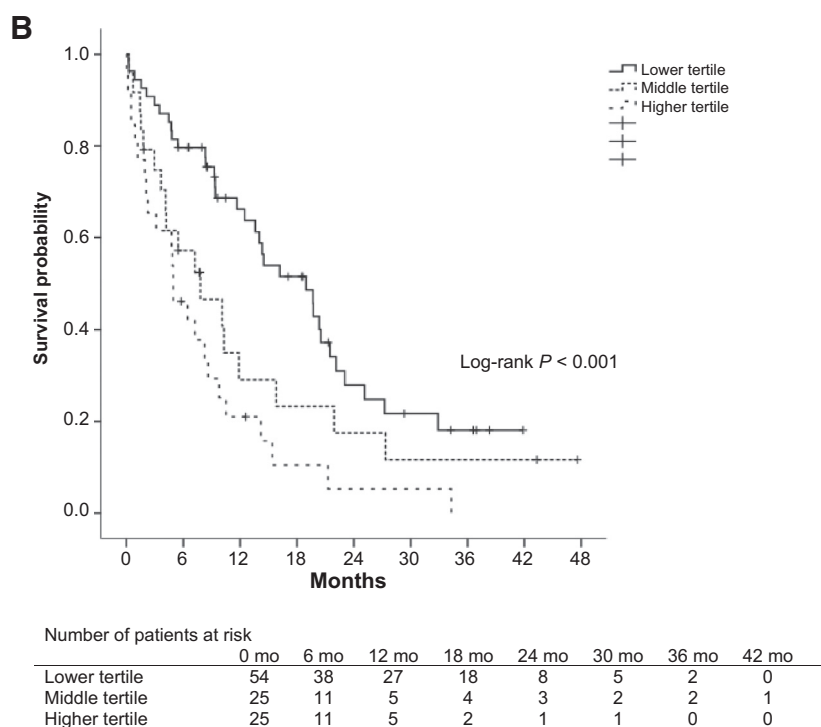
After a median follow-up of 34.2 months, 76 patients died (73.1%). The presence of ctDNA was strongly correlated with



**Figure 1.** Mutated genes distribution in advanced patients with detectable ctDNA.



**Figure 2.** Survival curves according to detectable ctDNA in advanced patients. **A**, Overall survival (OS). **B**, OS according to ctDNA tertile.



poor OS (6.5 vs. 19.0 months; log-rank  $P < 0.001$ ) in patients with advanced pancreatic adenocarcinoma (Fig. 2A).

To evaluate the impact of ctDNA level, patients were grouped according to mutation allelic ratio tertiles. Patients with higher MAF had the worst OS (Fig. 2B). The OS decreased from 18.9, 7.8, and 4.9 months (log-rank  $P < 0.001$ ) for the lowest, middle, and highest MAF tertiles, respectively. In multivariate analysis, includ-

ing ctDNA, age, gender, and stage disease, ctDNA was independently associated with poor OS (HR = 1.96; 95% CI, 1.20–3.20;  $P = 0.007$ ; Table 2).

Twenty-seven patients (54%) had at least two mutations detected. To evaluate the impact of presence of multiple mutations, patients were divided in two groups: "KRAS only" or "KRAS + other" when KRAS mutation was associated with at least another

**Table 2.** Prognostic factors for OS and DFS at univariate and multivariate analysis in advanced pancreatic adenocarcinoma

	Number of patients <i>n</i> = 104	Univariate analysis		Multivariate analysis	
		HR (95% CI)	<i>P</i>	HR (95% CI)	<i>P</i>
Age <sup>a</sup>		1.05 (0.99–1.04)	0.249	1.01 (0.97–1.04)	0.608
Gender (male)	66	0.74 (0.45–1.19)	0.207	0.65 (0.38–1.16)	0.147
Metastatic disease	68	<b>3.22 (1.90–5.45)</b>	<b>&lt;0.001</b>	<b>2.87 (1.52–5.42)</b>	<b>&lt;0.001</b>
CA 19-9 > 200 IU/mL	59	1.33 (0.78–2.27)	0.30	1.14 (0.65–2.00)	0.64
ctDNA detectable	50	<b>2.24 (1.41–3.54)</b>	<b>0.001</b>	<b>1.99 (1.13–3.50)</b>	<b>0.016</b>

NOTE: Bold font indicates statistically significant *P* value.<sup>a</sup>Continuous variable.

mutation. There was a trend illustrative of patients with multiple mutations having a poorer prognosis, but the difference was not statistically significant (median OS 3.1 vs. 8.6 months;  $P = 0.128$ ; see Supplementary Data File S3).

Similarly, in the subgroup of patients with a *KRAS* mutation, there was no significant difference in OS for particular individual *KRAS* mutations: *KRAS* G12V versus others: median OS 4.9 versus 9.0 months ( $P = 0.507$ ); *KRAS* G12D versus others: 4.9 versus 5.5 months ( $P = 0.594$ ).

Preliminary data from monitoring ctDNA in 8 patients suggest that the evolution of ctDNA levels was correlated with chemotherapy efficacy and objective radiological response (see Supplementary Data File S4).

#### Prognostic value of ctDNA in resected patients

After a median follow-up of 33.3 months, tumor relapse occurred in 23 patients and 13 of them died. Median delay between surgical resection and blood sample collection was 60.5 days (range, 37–123). All patients with detectable ctDNA ( $n = 6$ ) present positive lymph nodes and 5 of them had a pT3 tumor.

In this subgroup of resected patients, those with undetectable ctDNA after surgery had a longer DFS (17.6 vs. 4.6 months; log-rank  $P = 0.03$ ) and a longer OS (32.2 vs. 19.3;  $P = 0.027$ ) than those with detectable ctDNA (Fig. 3A and B). Among 6 patients with detectable ctDNA, tumor relapse occurred in 4 patients. Progression using ctDNA was detected at an average of 2.4 months compared with 4.0 months using standard CT scan ( $P = 0.043$ ).

## Discussion

In this series, we showed that ctDNA can improve the prognostic staging of metastatic and locally advanced pancreatic adenocarcinoma. Our work highlights that the detection and evaluation of the quantity of ctDNA appears suitable as an independent prognostic factor in stage III or IV pancreatic adenocarcinoma and a prognostic factor of recurrence in resected patients when detected after surgery.

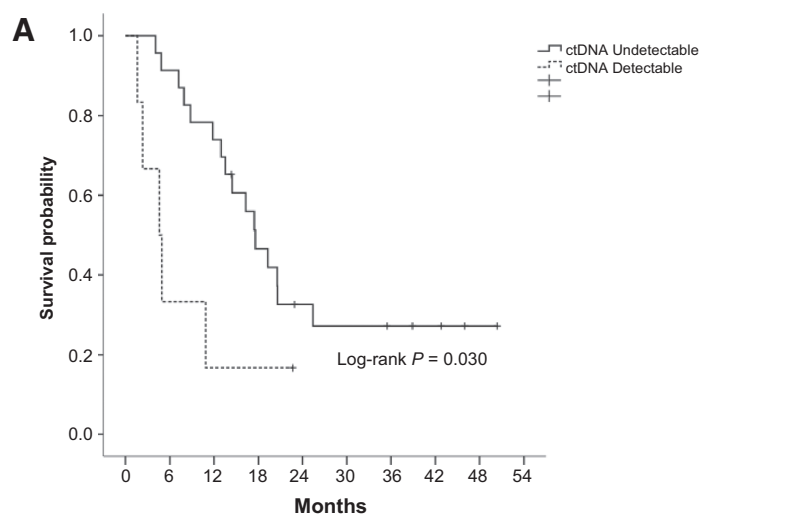
Somatic mutations were analyzed in plasma DNA samples by NGS without any information on primary tumor mutational status. All *KRAS* mutations were also validated with picoliter droplet dPCR that provides both higher sensitivity and lower cost than NGS but is reduced in the number of mutations that can be interrogated. A strong correlation was observed between the AF measured by both approaches, suggesting that our NGS strategy led to quantitative results. In pancreatic cancer patients, the diagnostic benefit of optimized NGS compared with dPCR is approximately 15% of the cases (i.e., patients with a pancreatic cancer without *KRAS* mutations). The use of one technique or the other is likely to be linked to the workflow of the laboratory. Improvement of sensitivity is likely to be linked to testing of an increased quantity of plasma DNA. In dPCR, higher DNA input amounts could be used with an associated increase in sensitivity

being achievable. We indeed previously described sensitivity of up to 0.0005%. However, only 6  $\mu$ L of DNA was available for droplet-based dPCR analysis in this particular study. The use of a higher quantity of plasma DNA could have allowed the detection of a higher fraction of patients with *KRAS*-mutated ctDNA.

Bettegowda and colleagues reported that ctDNA somatic mutation can be detected in >50% of patients with several cancers, including pancreatic adenocarcinoma, even in a localized stage (12). Moreover, Sausen and colleagues recently demonstrated that mutations detected in tumor specimens from 22 patients were detectable in the plasma at diagnosis with a specificity >99.9%, confirming that the mutated fraction of circulating DNA arises from tumor tissues (16). Although all our patients had histologically proven pancreatic adenocarcinoma, only 48% had detectable ctDNA in the advanced subgroup. Focusing on metastatic patients, this rate increased to 64.7%. These results are consistent with Kinugasa and colleagues' cohort of 66 pancreatic adenocarcinoma patients screened for *KRAS* mutations, reporting 54.5% ( $n = 36$ ) of samples detectable for ctDNA in blood samples despite a significant number of metastatic cases in their cohort ( $n = 57$ ; ref. 19). However, Bettegowda and colleagues reported a higher ctDNA detection rate in metastatic PDAC with nearly 90% of patients with detectable ctDNA. This discrepancy may be explained by methodologic differences and, more importantly, quantity of DNA sequenced in each assay in their study (19).

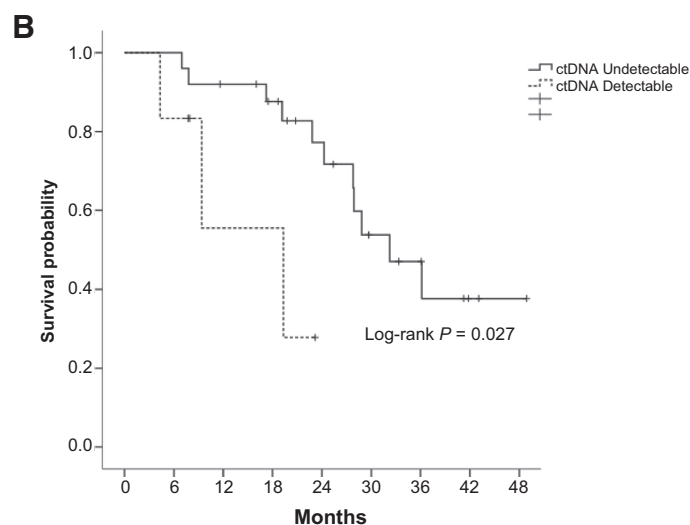
The development and growth of pancreatic adenocarcinoma involves oncogene activation or loss of tumor suppressor gene function (27, 28). *KRAS* is the most common of these genes and one of the drivers of mutations in pancreatic adenocarcinoma. Mutations in *KRAS* were the most frequently detected type in our cohort, in isolation or associated with other genes alterations, and present in 86% of patients with ctDNA detected. Our findings in blood are concordant with those previously published from pancreatic adenocarcinoma tissue, which report a rate of *KRAS* mutation in pancreatic adenocarcinoma of about 80% to 90% (16, 19). We retrospectively assessed the *KRAS* and *TP53* tumor status in 20 tumor samples. We found an agreement between tumor tissue and plasma ctDNA in 19 of 20 couples tested (95%) both for *KRAS* and *TP53*. The 2 discordant cases (one for *KRAS* and one for *TP53*) were positive in plasma, negative in tumors, suggesting a potential sampling problem owing to biopsy from a unique metastatic site (data not shown).

Some authors demonstrated that gender, chronic inflammation, age, or tumor heterogeneity could influence the level of ctDNA (29). In this series, most patients with detectable ctDNA had moderate or undifferentiated tumors ( $P = 0.037$ ). Tumor differentiation thus seems to impact the ctDNA level in pancreatic adenocarcinoma. Although we did not observe a significant correlation between the number of metastatic sites and the presence of ctDNA, we cannot exclude a relationship between the tumor mass and the presence of ctDNA. The presence of a



	0 mo	6 mo	12 mo	18 mo	24 mo	30 mo	36 mo	42 mo	48 mo
ctDNA Undetectable	25	21	16	9	6	4	3	2	1
ctDNA Detectable	6	2	1	1	0	0	0	0	0

**Figure 3.** Survival curves according to detectable ctDNA in resected patients. **A**, Disease-free survival. **B**, Overall survival.



	0 mo	6 mo	12 mo	18 mo	24 mo	30 mo	36 mo	42 mo	48 mo
ctDNA Undetectable	25	24	21	17	13	7	4	1	1
ctDNA Detectable	6	4	2	1	0	0	0	0	0

pancreatic metastatic disease is not synonymous with presence of ctDNA, and seems to be correlated with differentiation grade and could more reflect tumor aggressiveness than tumor burden.

One of the important results in our study was the prognostic value of the presence and level of ctDNA. In the advanced subgroup, ctDNA was an independent prognostic biomarker of OS (HR = 1.94;  $P = 0.007$ ). The presence of ctDNA after surgery appeared to be a prognostic factor of poor DFS and OS. Chen and colleagues have previously described the prognostic value of this biomarker in pancreatic adenocarcinoma (20). In their series, the presence of *KRAS* mutation in plasma was correlated with poor OS (3.9 vs. 10.2 months;  $P < 0.001$ ) in nonresectable patients. More recently, Sausen and colleagues reported that, in resectable

patients, ctDNA was a prognostic factor of early tumor relapse if detected before surgery (log-rank  $P = 0.015$ ). In this study, in a subgroup of 20 patients collected after surgical resection, detectable ctDNA was also a prognostic biomarker of DFS (9.9 months vs. median not reached; log-rank  $P = 0.02$ ; ref. 16).

Although, in resected patients, the presence of ctDNA after resection could suggest the existence of a micrometastasis disease, studies are needed to determine whether the presence of ctDNA may be used for early detection of pancreatic adenocarcinoma. On the basis of our results, we make an educated guess that the detection of small pancreatic tumors will be difficult without improving the quantity of input DNA and consequently the volume of plasma used for this purpose.

Although the blood samples of our patients are prospectively and consecutively collected, the study presents heterogeneity in treatments received owing to difference in age, treatment tolerance, or performance status of patients. This heterogeneity could induce a bias in the results even if multivariate analysis confirmed the prognostic value of ctDNA. Second, our monitoring results are preliminary without perfect concordance between sample collection and radiological evaluation of patients for example. In the resectable subgroup, there is a lack of preoperative ctDNA data. Indeed, patients were collected at the first cycle of adjuvant treatment, and our protocol did not include samples before surgery. Finally, despite careful collection and storage of samples, and the use of highly sensitive methods to detect genetic changes, some alterations may not have been detected due to limited plasmatic DNA amounts or very low MAF.

## Conclusions

This study demonstrates that ctDNA can be detected in peripheral blood in pancreatic adenocarcinoma and that it appears as an independent prognostic marker of OS in locally advanced or metastatic diseases. Furthermore, it arises as an indicator of shorter DFS and OS in resected patients when detected after surgery. The described procedure may have great potential as a new simple and noninvasive strategy for patients' care and follow-up. Further investigations are needed to confirm these results and their usefulness in the prognosis and in-risk group screening of patients.

Moreover, ctDNA would be of great interest (i) to allow a rapid molecular analysis for inclusion in "molecular" trials with targeted therapies; and (ii) for initial diagnosis in the case of difficulty in obtaining histologic proof.

## Disclosure of Potential Conflicts of Interest

V. Taly is a consultant/advisory board member for Boehringer Ingelheim and Raindance Technologies. P. Laurent-Puig is a consultant/advisory board member for Raindance Technologies. J.-B. Bachet is a consultant/advisory board member for Amgen, Celgene, and Merck Serono. No potential conflicts of interest were disclosed by the other authors.

## References

- Eheman C, Henley SJ, Ballard-Barbash R, Jacobs EJ, Schymura MJ, Noone AM, et al. Annual Report to the Nation on the status of cancer, 1975–2008, featuring cancers associated with excess weight and lack of sufficient physical activity. *Cancer* 2012;118:2338–66.
- Bouvier AM, Remontet L, Jouglu E, Launoy G, Grosclaude P, Buemi A, et al. Incidence of gastrointestinal cancers in France. *Gastroenterol Clin Biol* 2004;28:877–81.
- Siegel RL, Miller KD, Jemal A. Cancer statistics, 2015. *CA Cancer J Clin* 2015;65:5–29.
- Conroy T, Desseigne F, Ychou M, Bouche O, Guimbaud R, Becouarn Y, et al. FOLFIRINOX versus gemcitabine for metastatic pancreatic cancer. *N Engl J Med* 2011;364:1817–25.
- Von Hoff DD, Ervin T, Arena FP, Chiorean EG, Infante J, Moore M, et al. Increased survival in pancreatic cancer with nab-paclitaxel plus gemcitabine. *N Engl J Med* 2013;369:1691–703.
- Poruk KE, Gay DZ, Brown K, Mulvihill JD, Boucher KM, Scaife CL, et al. The clinical utility of CA 19-9 in pancreatic adenocarcinoma: diagnostic and prognostic updates. *Curr Mol Med* 2013;13:340–51.
- Hong SM, Park JY, Hruban RH, Goggins M. Molecular signatures of pancreatic cancer. *Arch Pathol Lab Med* 2011;135:716–27.
- Waddell N, Pajic M, Patch AM, Chang DK, Kassahn KS, Bailey P, et al. Whole genomes redefine the mutational landscape of pancreatic cancer. *Nature* 2015;518:495–501.
- di Magliano MP, Logsdon CD. Roles for KRAS in pancreatic tumor development and progression. *Gastroenterology* 2013;144:1220–9.
- Sozzi G, Conte D, Leon M, Ciricione R, Roz L, Ratcliffe C, et al. Quantification of free circulating DNA as a diagnostic marker in lung cancer. *J Clin Oncol* 2003;21:3902–8.
- Gal S, Fidler C, Lo YM, Taylor M, Han C, Moore J, et al. Quantitation of circulating DNA in the serum of breast cancer patients by real-time PCR. *Br J Cancer* 2004;90:1211–5.
- Bettegowda C, Sausen M, Leary RJ, Kinde I, Wang Y, Agrawal N, et al. Detection of circulating tumor DNA in early- and late-stage human malignancies. *Sci Transl Med* 2014;6:224ra24.
- Spindler KL, Pallisgaard N, Vogelius I, Jakobsen A. Quantitative cell-free DNA, KRAS, and BRAF mutations in plasma from patients with metastatic colorectal cancer during treatment with cetuximab and irinotecan. *Clin Cancer Res* 2012;18:1177–85.
- Spindler KL, Appelt AL, Pallisgaard N, Andersen RF, Brandslund I, Jakobsen A. Cell-free DNA in healthy individuals, noncancerous disease and strong prognostic value in colorectal cancer. *Int J Cancer* 2014;135:2984–91.
- Tie J, Kinde I, Wang Y, Wong HL, Roebert J, Christie M, et al. Circulating tumor DNA as an early marker of therapeutic response in patients with metastatic colorectal cancer. *Ann Oncol* 2015;26:1715–22.

## Authors' Contributions

**Conception and design:** D. Pietrasz, M. Karoui, P. Laurent-Puig, J.-B. Bachet  
**Development of methodology:** D. Pietrasz, N. Pécuchet, F. Garlan, A. Didelot, V. Taly, P. Laurent-Puig, J.-B. Bachet

**Acquisition of data (provided animals, acquired and managed patients, provided facilities, etc.):** D. Pietrasz, O. Dubreuil, S. Doat, F. Imbert-Bismut, V. Taly, P. Laurent-Puig, J.-B. Bachet, J.-C Vaillant

**Analysis and interpretation of data (e.g., statistical analysis, biostatistics, computational analysis):** D. Pietrasz, N. Pécuchet, F. Garlan, V. Taly, P. Laurent-Puig, J.-B. Bachet

**Writing, review, and/or revision of the manuscript:** D. Pietrasz, N. Pécuchet, F. Garlan, V. Taly, P. Laurent-Puig, J.-B. Bachet, J.-C Vaillant

**Administrative, technical, or material support (i.e., reporting or organizing data, constructing databases):** D. Pietrasz, P. Laurent-Puig, J.-B. Bachet

**Study supervision:** D. Pietrasz, V. Taly, P. Laurent-Puig, J.-B. Bachet

**Other (support for the picoliter droplet-based digital PCR experiments):** F. Garlan

## Acknowledgments

We thank Dr. Armelle Bardier-Dupas from the Department of Pathology, (Pitié-Salpêtrière Hospital, Sorbonne University, UPMC University, Paris, France) for her clinical and technical implication in tumor and blood sample matching. M. Daniel Pietrasz thanks the Fondation d'Aide et Recherche en Cancérologie Digestive (A.R.C.A.D). F. Garlan thanks the Fondation Servier for a fellowship within the Frontiers in Life Science PhD program (FdV). The authors thank M. Adam Corner for reviewing the language of this manuscript.

## Grant Support

D. Pietrasz was supported by a grant from the Fondation d'Aide et Recherche en Cancérologie Digestive (A.R.C.A.D). This work was supported by the Ministère de l'Enseignement Supérieur et de la Recherche, the Université Paris-Descartes, the Centre National de la Recherche Scientifique (CNRS), the Institut National de la Santé et de la Recherche Médicale (INSERM), the Agence Nationale de la Recherche (ANR Nanobiotechnologies; no. ANR-10-NANO-0002-09), the Mérieux institute (to P. Laurent-Puig and V. Taly, research advanced grant), and the SIRIC CARPEM. F. Garlan was supported by the Fondation Servier with a fellowship within the Frontiers in Life Science PhD program (FdV).

The costs of publication of this article were defrayed in part by the payment of page charges. This article must therefore be hereby marked *advertisement* in accordance with 18 U.S.C. Section 1734 solely to indicate this fact.

Received April 5, 2016; revised October 5, 2016; accepted October 8, 2016; published OnlineFirst December 19, 2016.

16. Sausen M, Phallen J, Adleff V, Jones S, Leary RJ, Barrett MT, et al. Clinical implications of genomic alterations in the tumour and circulation of pancreatic cancer patients. *Nat Commun* 2015;6:7686.
17. Marchese R, Muleti A, Pasqualetti P, Bucci B, Stigliano A, Brunetti E, et al. Low correspondence between K-ras mutations in pancreatic cancer tissue and detection of K-ras mutations in circulating DNA. *Pancreas* 2006;32:171–7.
18. Dabritz J, Preston R, Hanfler J, Oettle H. Follow-up study of K-ras mutations in the plasma of patients with pancreatic cancer: correlation with clinical features and carbohydrate antigen 19-9. *Pancreas* 2009;38:534–41.
19. Kinugasa H, Nouse K, Miyahara K, Morimoto Y, Dohi C, Tsutsumi K, et al. Detection of K-ras gene mutation by liquid biopsy in patients with pancreatic cancer. *Cancer* 2015;121:2271–80.
20. Chen H, Tu H, Meng ZQ, Chen Z, Wang P, Liu LM. K-ras mutational status predicts poor prognosis in unresectable pancreatic cancer. *Eur J Surg Oncol* 2010;36:657–62.
21. Tops BB, Normanno N, Kurth H, Amato E, Mafficini A, Rieber N, et al. Development of a semi-conductor sequencing-based panel for genotyping of colon and lung cancer by the Onconetwork consortium. *BMC Cancer* 2015;15:26.
22. Pécuchet N, Rozenholc Y, Zonta E, Pietrasz D, Didelot A, Combe P, et al. Analysis of base-position error rate of next-generation sequencing to detect tumor mutations in circulating DNA. *Clin Chem* 2016;62:1492–1503.
23. Pekin D, Skhiri Y, Baret JC, Le Corre D, Mazutis L, Salem CB, et al. Quantitative and sensitive detection of rare mutations using droplet-based microfluidics. *Lab Chip* 2011;11:2156–66.
24. Lievre A, Bachet JB, Boige V, Cayre A, Le Corre D, Buc E, et al. KRAS mutations as an independent prognostic factor in patients with advanced colorectal cancer treated with cetuximab. *J Clin Oncol* 2008;26:374–9.
25. Taly V, Pekin D, Benhaim L, Kotsopoulos SK, Le Corre D, Li X, et al. Multiplex picodroplet digital PCR to detect KRAS mutations in circulating DNA from the plasma of colorectal cancer patients. *Clin Chem* 2013;59:1722–31.
26. Bonnetain F, Bonsing B, Conroy T, Dousseau A, Glimelius B, Haustermans K, et al. Guidelines for time-to-event end-point definitions in trials for pancreatic cancer. Results of the DATECAN initiative (Definition for the Assessment of Time-to-event End-points in CANcer trials). *Eur J Cancer* 2014;50:2983–93.
27. Goggins M, Kern SE, Offerhaus JA, Hruban RH. Progress in cancer genetics: lessons from pancreatic cancer. *Ann Oncol* 1999;10 Suppl 4:4–8.
28. Bardeesy N, DePinho RA. Pancreatic cancer biology and genetics. *Nat Rev Cancer* 2002;2:897–909.
29. Gall TM, Frampton AE, Krell J, Castellano L, Jiao LR. Circulating molecular markers in pancreatic cancer: ready for clinical use? *Future Oncol* 2013;9:141–4.