

## Correction: Evaluating Genetic Risk for Prostate Cancer among Japanese and Latinos

In this article (*Cancer Epidemiol Biomarkers Prev* 2012;21:2048-58), which was published in the November 2012 issue of *Cancer Epidemiology, Biomarkers & Prevention* (1), the legend for Figure 1 is incorrect in that the ethnic groups are switched, misidentifying the ethnic group shown in parts A and B. The figure legend should read, "Manhattan plot for Japanese (A) and Latinos (B)." The figure with the correct legend is shown below. The publisher regrets the error.

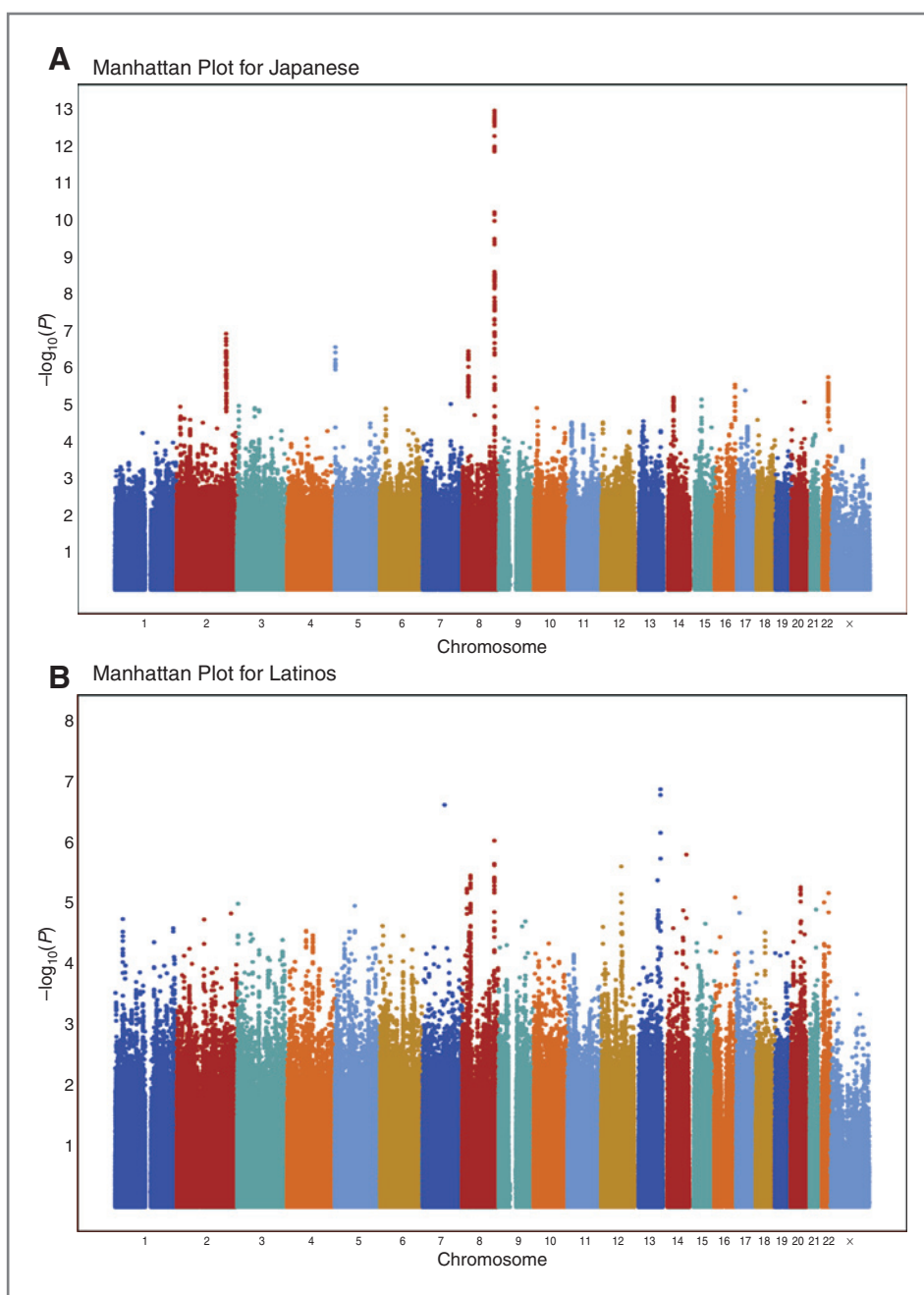


Figure 1. Manhattan plot for Japanese (A) and Latinos (B).

---

The text of the results section refers to the correct ethnic group (i.e., Fig. 1A Japanese and Fig. 1B Latinos).

### Reference

1. Cheng I, Chen GK, Nakagawa H, He J, Wan P, Laurie CC, et al. Evaluating genetic risk for prostate cancer among Japanese and Latinos. *Cancer Epidemiol Biomarkers Prev* 2012;21:2048–58.

---

Published OnlineFirst May 16, 2013.

doi: 10.1158/1055-9965.EPI-13-0376

©2013 American Association for Cancer Research.