

# Therapeutic Nanoparticles for Drug Delivery in Cancer

Kwangjae Cho,<sup>1</sup> Xu Wang,<sup>1</sup> Shuming Nie,<sup>2</sup> Zhuo (Georgia) Chen,<sup>1</sup> and Dong M. Shin<sup>1</sup>

**Abstract** Cancer nanotherapeutics are rapidly progressing and are being implemented to solve several limitations of conventional drug delivery systems such as nonspecific biodistribution and targeting, lack of water solubility, poor oral bioavailability, and low therapeutic indices. To improve the bio-distribution of cancer drugs, nanoparticles have been designed for optimal size and surface characteristics to increase their circulation time in the bloodstream. They are also able to carry their loaded active drugs to cancer cells by selectively using the unique pathophysiology of tumors, such as their enhanced permeability and retention effect and the tumor microenvironment. In addition to this passive targeting mechanism, active targeting strategies using ligands or antibodies directed against selected tumor targets amplify the specificity of these therapeutic nanoparticles. Drug resistance, another obstacle that impedes the efficacy of both molecularly targeted and conventional chemotherapeutic agents, might also be overcome, or at least reduced, using nanoparticles. Nanoparticles have the ability to accumulate in cells without being recognized by P-glycoprotein, one of the main mediators of multidrug resistance, resulting in the increased intracellular concentration of drugs. Multifunctional and multiplex nanoparticles are now being actively investigated and are on the horizon as the next generation of nanoparticles, facilitating personalized and tailored cancer treatment.

Conventional chemotherapeutic agents are distributed nonspecifically in the body where they affect both cancerous and normal cells, thereby limiting the dose achievable within the tumor and also resulting in suboptimal treatment due to excessive toxicities. Molecularly targeted therapy has emerged as one approach to overcome the lack of specificity of conventional chemotherapeutic agents (1). However, the development of resistance in cancer cells can evade the cytotoxicity not only of conventional chemotherapeutics but also of these newer molecularly targeted therapeutics (2).

Nanoparticles, by using both passive and active targeting strategies, can enhance the intracellular concentration of drugs in cancer cells while avoiding toxicity in normal cells (3, 4). Furthermore, when nanoparticles bind to specific receptors and then enter the cell, they are usually enveloped by endosomes via receptor-mediated endocytosis, thereby bypassing the recognition of P-glycoprotein, one of the main drug resistance mechanisms (5). However, although nanoparticles offer many advantages as drug carrier systems, there are still many

limitations to be solved such as poor oral bioavailability, instability in circulation, inadequate tissue distribution, and toxicity.

In this review, we will address, first, the types and characteristics of nanoparticles; second, how nanoparticles are being used as drug delivery systems to kill cancer cells more effectively and also to reduce or overcome drug resistance; and third, how nanoparticles will be developed to improve their therapeutic efficacy and functionality in future cancer treatments.

## Types of Nanoparticles Used as Drug Delivery Systems

Nanoparticles applied as drug delivery systems are submicron-sized particles (3-200 nm), devices, or systems that can be made using a variety of materials including polymers (polymeric nanoparticles, micelles, or dendrimers), lipids (liposomes), viruses (viral nanoparticles), and even organometallic compound (nanotubes; Table 1).

### Polymer-based drug carriers

Depending on the method of preparation, the drug is either physically entrapped in or covalently bound to the polymer matrix (6). The resulting compounds may have the structure of capsules (polymeric nanoparticles), amphiphilic core/shell (polymeric micelles), or hyperbranched macromolecules (dendrimers; Fig. 1). Polymers used as drug conjugates can be divided into two groups of natural and synthetic polymers.

**Polymeric nanoparticles (polymer-drug conjugates).** Polymers such as albumin, chitosan, and heparin occur naturally and have been a material of choice for the delivery of oligonucleotides, DNA, and protein, as well as drugs. Recently, a nanoparticle formulation of paclitaxel, in which serum

**Authors' Affiliations:** <sup>1</sup>Department of Hematology and Oncology, Winship Cancer Institute, Emory University School of Medicine and <sup>2</sup>Department of Biomedical Engineering, Georgia Institute of Technology and Emory University School of Medicine, Atlanta, Georgia

Received 6/12/07; revised 9/26/07; accepted 12/7/07.

**Grant support:** NIH grant for Center of Cancer Nanotechnology Excellence (S. Nie and D.M. Shin) and Georgia Cancer Coalition Distinguished Scholar Award [D.M. Shin, S. Nie, and Z. (G) Chen].

**Note:** The current address of Dr. Kwangjae Cho: Department of Otolaryngology-Head and Neck Surgery, Catholic University of Korea College of Medicine.

**Requests for reprints:** Dong M. Shin, Winship Cancer Institute, Emory University School of Medicine, Room 3090, 1365-C Clifton Road, Atlanta, GA 30322. Phone: 404-778-5990; E-mail: dong.shin@emoryhealthcare.org.

©2008 American Association for Cancer Research.  
doi:10.1158/1078-0432.CCR-07-1441

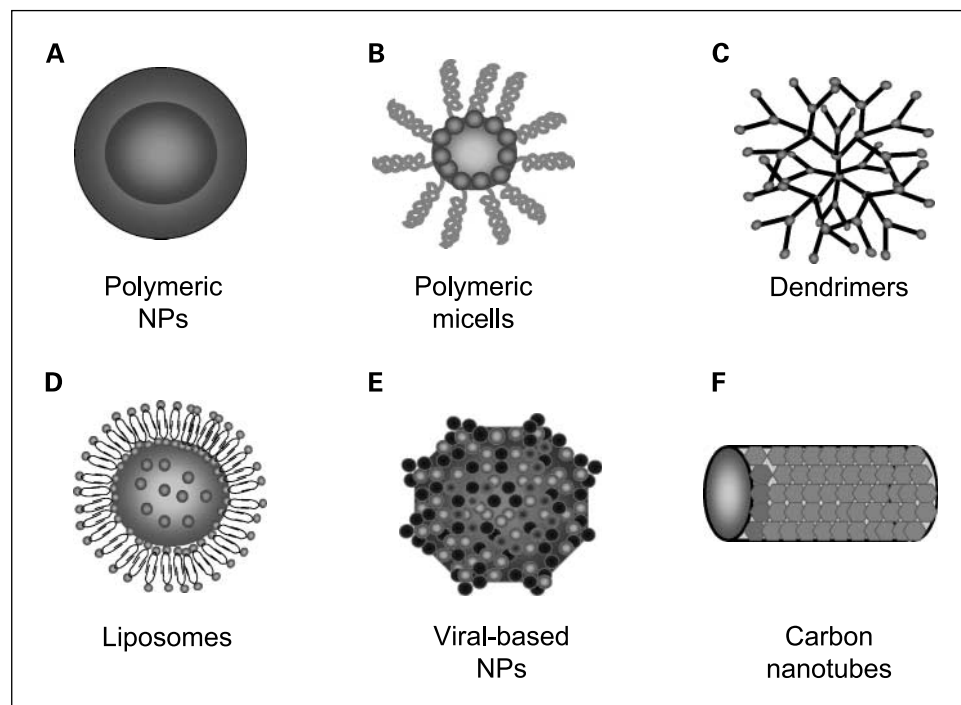
**Table 1.** Types of nanocarriers for drug delivery

System	Structure	Characteristics	Examples of compounds	Ref.
Polymeric nanoparticles (polymer-drug conjugates)	Drugs are conjugated to the side chain of a linear polymer with a linker (cleavable bond)	(a) Water-soluble, nontoxic, biodegradable (b) Surface modification (pegylation) (c) Selective accumulation and retention in tumor tissue (EPR effect) (d) Specific targeting of cancer cells while sparing normal cells—receptor-mediated targeting with a ligand	Albumin-Taxol (Abraxane) PGA-Taxol (Xyotax) PGA-Camptothecin (CT-2106) HPMA-DOX (PK1) HPMA-DOX-galactosamine (PK2)	(7) (11) (12) (14) (58)
Polymeric micelles	Amphiphilic block copolymers assemble and form a micelle with a hydrophobic core and hydrophilic shell	(a) Suitable carrier for water-insoluble drug (b) Biocompatible, self-assembling, biodegradable (c) Ease of functional modification (d) Targeting potential	PEG-pluronic-DOX PEG-PAA-DOX (NK911) PEG-PLA-Taxol (Genexol-PM)	(16) (17) (18)
Dendrimers	Radially emerging hyperbranched synthetic polymer with regular pattern and repeated units	(a) Biodistribution and PK can be tuned (b) High structural and chemical homogeneity (c) Ease of functionalization, high ligand density (d) Controlled degradation (e) Multifunctionality	PAMAM-MTX PAMAM-platinite	(64) (21)
Liposomes	Self-assembling closed colloidal structures composed of lipid bilayers	(a) Amphiphilic, biocompatible (b) Ease of modification (c) Targeting potential	Pegylated liposomal DOX (Doxil) Non-pegylated liposomal DOX (Myocet) Liposomal daunorubicin (DaunoXome)	(22) (23) (24)
Viral nanoparticles	Protein cages, which are multivalent, self-assembled structures	(a) Surface modification by mutagenesis or bioconjugation—multivalency (b) Specific tumor targeting, multifunctionality (c) Defined geometry and remarkable uniformity (d) Biological compatibility and inert nature	HSP-DOX CPMV-DOX	(29, 30) (27)
Carbon nanotubes	Carbon cylinders composed of benzene ring	(a) Water-soluble and biocompatible through chemical modification (organic functionalization) (b) Multifunctionality	CNT-MTX CNT-amphotericin B	(34) (33)

Abbreviations: PGA, poly-(L-glutamate); HPMA, *N*-(2-hydroxypropyl)-methacrylamide copolymer; PEG, polyethylene glycol; PAA, poly-(L-aspartate); PLA, poly-(L-lactide); PAMAM, poly(amidoamine); DOX, doxorubicin; MTX, methotrexate; PK, pharmacokinetics; EPR, enhanced permeability and retention; CNT, carbon nanotube; HSP, heat shock protein; CPMV, cowpea mosaic virus.

albumin is included as a carrier [nanometer-sized albumin-bound paclitaxel (Abraxane); Fig. 1A], has been applied in the clinic for the treatment of metastatic breast cancer (7). Besides metastatic breast cancer, Abraxane has also been evaluated in clinical trials involving many other cancers including non-small-cell lung cancer (phase II trial) and advanced nonhematologic malignancies (phase I and pharmacokinetics trials; refs. 8, 9).

Among synthetic polymers such as *N*-(2-hydroxypropyl)-methacrylamide copolymer (HPMA), polystyrene-maleic anhydride copolymer, polyethylene glycol (PEG), and poly-L-glutamic acid (PGA), PGA was the first biodegradable polymer to be used for conjugate synthesis (10). Several representative chemotherapeutics that are used widely in the clinic have been tested as conjugates with PGA *in vitro* and *in vivo* and showed encouraging abilities to circumvent the shortcomings of their



**Fig. 1.** Types of nanocarriers for drug delivery. *A*, polymeric nanoparticles: polymeric nanoparticles in which drugs are conjugated to or encapsulated in polymers. *B*, polymeric micelles: amphiphilic block copolymers that form to nanosized core/shell structure in aqueous solution. The hydrophobic core region serves as a reservoir for hydrophobic drugs, whereas hydrophilic shell region stabilizes the hydrophobic core and renders the polymer to be water-soluble. *C*, dendrimers: synthetic polymeric macromolecule of nanometer dimensions, which is composed of multiple highly branched monomers that emerge radially from the central core. *D*, liposomes: self-assembling structures composed of lipid bilayers in which an aqueous volume is entirely enclosed by a membranous lipid bilayer. *E*, viral-based nanoparticles: in general structure are the protein cages, which are multivalent, self-assembles structures. *F*, carbon nanotubes: carbon cylinders composed of benzene rings.

free drug counterparts (10). Among them, Xyotax (PGA-paclitaxel; ref. 11) and CT-2106 (PGA-camptothecin; ref. 12) are now in clinical trials.

HPMA and PEG are the most widely used nonbiodegradable synthetic polymers (13). PK1, which is a conjugate of HPMA with doxorubicin, was the synthetic polymer-drug conjugate to be evaluated in clinical trials as an anticancer agent. A phase I clinical trial has been completed in patients with a variety of tumors that were refractory or resistant to prior therapy such as chemotherapy and/or radiation (14). PK1 should be further evaluated in the next level of clinical trials.

**Polymeric micelles (amphiphilic block copolymers).** The functional properties of micelles are based on amphiphilic block copolymers, which assemble to form a nanosized core/shell structure in aqueous media (Fig. 1B). The hydrophobic core region serves as a reservoir for hydrophobic drugs, whereas the hydrophilic shell region stabilizes the hydrophobic core and renders the polymers water-soluble, making the particle an appropriate candidate for i.v. administration (15). The drug can be loaded into a polymeric micelle in two ways: physical encapsulation (16) or chemical covalent attachment (17).

The first polymeric micelle formulation of paclitaxel, Genexol-PM (PEG-poly(D,L-lactide)-paclitaxel), is a cremophor-free polymeric micelle-formulated paclitaxel. A phase I and pharmacokinetic study has been conducted in patients with advanced refractory malignancies (18). Multifunctional polymeric micelles containing targeting ligands and imaging and therapeutic agents are being actively developed (19) and will become the mainstream among several models of the micellar formulation in the near future.

**Dendrimers.** A dendrimer is a synthetic polymeric macromolecule of nanometer dimensions, composed of multiple highly branched monomers that emerge radially from the central core (Fig. 1C). Properties associated with these dendrimers such as their monodisperse size, modifiable surface

functionality, multivalency, water solubility, and available internal cavity make them attractive for drug delivery (20).

Polyamidoamine dendrimer, the dendrimer most widely used as a scaffold, was conjugated with cisplatin (21). The easily modifiable surface characteristic of dendrimers enables them to be simultaneously conjugated with several molecules such as imaging contrast agents, targeting ligands, or therapeutic drugs, yielding a dendrimer-based multifunctional drug delivery system (20).

#### Lipid-based drug carriers

**Liposomes.** Liposomes are self-assembling closed colloidal structures composed of lipid bilayers and have a spherical shape in which an outer lipid bilayer surrounds a central aqueous space (Fig. 1D). Currently, several kinds of cancer drugs have been applied to this lipid-based system using a variety of preparation methods. Among them, liposomal formulations of the anthracyclines doxorubicin (Doxil, Myocet) and daunorubicin (DaunoXome) are approved for the treatment of metastatic breast cancer and AIDS-related Kaposi's sarcoma (22–24). Besides these approved agents, many liposomal chemotherapeutics are currently being evaluated in clinical trials (25). The next generation of liposomal drugs may be immunoliposomes, which selectively deliver the drug to the desired sites of action (26).

#### Viral nanoparticles

A variety of viruses including cowpea mosaic virus, cowpea chlorotic mottle virus, canine parvovirus, and bacteriophages have been developed for biomedical and nanotechnology applications that include tissue targeting and drug delivery (Fig. 1E). A number of targeting molecules and peptides can be displayed in a biologically functional form on their capsid surface using chemical or genetic means. Therefore, several ligands or antibodies including transferrin, folic acid, and

single-chain antibodies have been conjugated to viruses for specific tumor targeting *in vivo* (27). Besides this artificial targeting, a subset of viruses, such as canine parvovirus, have natural affinity for receptors such as transferrin receptors that are up-regulated on a variety of tumor cells (28). By targeting heat shock protein, a dual-function protein cage with specific targeting and doxorubicin encapsulation has been developed (29, 30).

### Carbon nanotubes

Carbon nanotubes are carbon cylinders composed of benzene rings (Fig. 1F) that have been applied in biology as sensors for detecting DNA and protein, diagnostic devices for the discrimination of different proteins from serum samples, and carriers to deliver vaccine or protein (31). Carbon nanotubes are completely insoluble in all solvents, generating some health concerns and toxicity problems. However, the introduction of chemical modification to carbon nanotubes can render them water-soluble and functionalized so that they can be linked to a wide variety of active molecules such as peptides, proteins, nucleic acids, and therapeutic agents (32).

Antifungal agents (amphotericin B) or anticancer drugs (methotrexate) have been covalently linked to carbon nanotubes with a fluorescent agent (FITC). In an *in vitro* study, drugs bound to carbon nanotubes were shown to be more effectively internalized into cells compared with free drug alone and to have potent antifungal activity (33, 34). The multiple covalent functionalizations on the sidewall or tips of carbon nanotubes allows them to carry several molecules at once, and this strategy provides a fundamental advantage in the treatment of cancer.

### Targeted Delivery of Nanoparticles

Ideally, for anticancer drugs to be effective in cancer treatment, they should first, after administration, be able to reach the desired tumor tissues through the penetration of barriers in the body with minimal loss of their volume or activity in the blood circulation. Second, after reaching the

tumor tissue, drugs should have the ability to selectively kill tumor cells without affecting normal cells with a controlled release mechanism of the active form. These two basic strategies are also associated with improvements in patient survival and quality of life by increasing the intracellular concentration of drugs and reducing dose-limiting toxicities simultaneously. Increasingly, nanoparticles seem to have the potential to satisfy both of these requirements for effective drug carrier systems.

### Size and Surface Characteristics of Nanoparticles

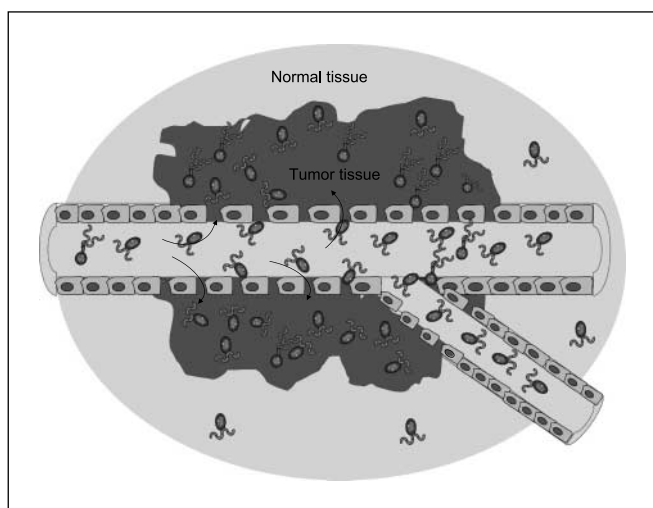
To effectively deliver drug to the targeted tumor tissue, nanoparticles must have the ability to remain in the bloodstream for a considerable time without being eliminated. Conventional surface nonmodified nanoparticles are usually caught in the circulation by the reticuloendothelial system, such as the liver and the spleen, depending on their size and surface characteristics (35). The fate of injected nanoparticles can be controlled by adjusting their size and surface characteristics.

**Size.** One of the advantages of nanoparticles is that their size is tunable. The size of nanoparticles used in a drug delivery system should be large enough to prevent their rapid leakage into blood capillaries but small enough to escape capture by fixed macrophages that are lodged in the reticuloendothelial system, such as the liver and spleen. The size of the sinusoid in the spleen and fenestra of the Kuffer cells in the liver varies from 150 to 200 nm (36) and the size of gap junction between endothelial cells of the leaky tumor vasculature may vary from 100 to 600 nm (37). Consequently, the size of nanoparticles should be up to 100 nm to reach tumor tissues by passing through these two particular vascular structures.

**Surface characteristics.** In addition to their size, the surface characteristics of nanoparticles are also an important factor determining their life span and fate during circulation relating to their capture by macrophages. Nanoparticles should ideally have a hydrophilic surface to escape macrophage capture (38). This can be achieved in two ways: coating the surface of nanoparticles with a hydrophilic polymer, such as PEG, protects them from opsonization by repelling plasma proteins; alternatively, nanoparticles can be formed from block copolymers with hydrophilic and hydrophobic domains (15, 39).

### Passive Targeting by Nanoparticles

**Enhanced permeability and retention effect.** Nanoparticles that satisfy the size and surface characteristics requirements described above for escaping reticuloendothelial system capture have the ability to circulate for longer times in the bloodstream and a greater chance of reaching the targeted tumor tissues. The unique pathophysiologic characteristics of tumor vessels enable macromolecules, including nanoparticles, to selectively accumulate in tumor tissues (3). Fast-growing cancer cells demand the recruitment of new vessels (neovascularization) or rerouting of existing vessels near the tumor mass to supply them with oxygen and nutrients (40). The resulting imbalance of angiogenic regulators such as growth factors and matrix metalloproteinases makes tumor vessels highly disorganized and dilated with numerous pores showing enlarged gap junctions between endothelial cells and compromised lymphatic drainage (40). These features are called the enhanced permeability and retention effect, which constitutes an important mechanism



**Fig. 2.** Tumor targeting of nanoparticles passively by enhanced permeability and retention. Long-circulating therapeutic nanoparticles accumulate passively in solid tumor tissue by the enhanced permeability and retention effect. Angiogenic tumor vessels are disorganized and leaky. Hyperpermeable angiogenic tumor vasculature allows preferential extravasation of circulating nanoparticles.

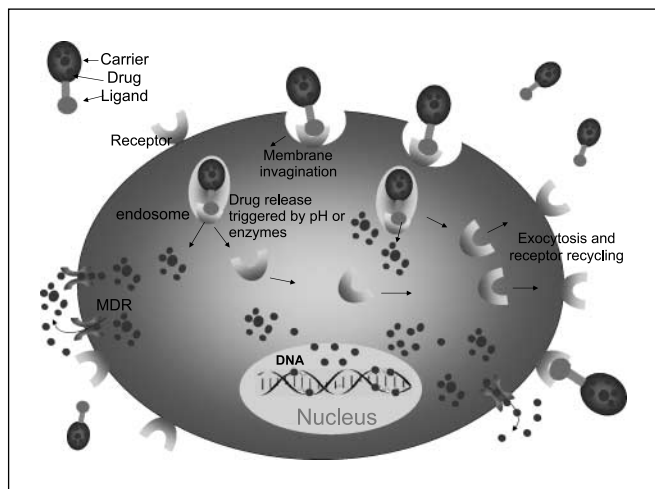
by which macromolecules, including nanoparticles, with a molecular weight above 50 kDa, can selectively accumulate in the tumor interstitium (Fig. 2; ref. 3).

**Tumor microenvironment.** Another contributor to passive targeting is the unique microenvironment surrounding tumor cells, which is different from that of normal cells. Fast-growing, hyperproliferative cancer cells show a high metabolic rate, and the supply of oxygen and nutrients is usually not sufficient for them to maintain this. Therefore, tumor cells use glycolysis to obtain extra energy, resulting in an acidic environment (41). The pH-sensitive liposomes are designed to be stable at a physiologic pH of 7.4, but degraded to release active drug in target tissues in which the pH is less than physiologic values, such as in the acidic environment of tumor cells (42).

Additionally, cancer cells express and release unique enzymes such as matrix metalloproteinases, which are implicated in their movement and survival mechanisms (43). An albumin-bound form of doxorubicin incorporating a matrix metalloproteinase-2-specific octapeptide sequence between the drug and the carrier was observed to be efficiently and specifically cleaved by matrix metalloproteinase-2 in an *in vitro* study (44).

### Active Targeting by Nanoparticles

A drug delivery system comprising a binary conjugate (i.e., polymer-drug conjugate) that depends only on passive targeting mechanisms inevitably faces intrinsic limitations to its specificity. One approach suggested to overcome these limitations is the inclusion of a targeting ligand or antibody in polymer-drug conjugates (4). Initially, direct conjugation of an antibody to a drug was attempted. However, in clinical trials conducted thus far, such early antibody-drug conjugates have failed to show superiority as a targeted delivery tool for the treatment of cancer (45). One of the reasons for this is that the number of drug molecules that can be loaded on the antibody while preserving its immune recognition is limited.



**Fig. 3.** Internalization of nanoparticles via receptor-mediated endocytosis. Tumor-specific ligands or antibodies on the nanoparticles bind to cell-surface receptors, which trigger internalization of the nanoparticles into the cell through endosome. As a pH value in the interior of the endosome becomes acidic, the drug is released from the nanoparticles and goes into the cytoplasm. Drug-loaded nanoparticles bypass the P-glycoprotein efflux pump not being recognized when the drug enters cells, leading to high intracellular concentration.

The recent development and introduction of a wide variety of liposomes and polymers as drug delivery carriers increases the potential number of drugs that can be conjugated to targeted nanoparticles without compromising their targeting affinity relative to earlier antibody-drug conjugates. Taking advantage of this array of carriers, targeting moieties, and drugs, many recently developed active targeting drug conjugates use a ternary structure composed of a ligand or antibody as a targeting moiety, a polymer or lipid as a carrier, and an active chemotherapeutic drug. When constructing ternary structure nanoparticles, some factors must be considered to create more efficient delivery systems.

**Antigen or receptor expression.** Ideally, cell-surface antigens and receptors should have several properties that render them particularly suitable tumor-specific targets (4). First, they should be expressed exclusively on tumor cells and not expressed on normal cells. Second, they should be expressed homogeneously on all targeted tumor cells. Last, cell-surface antigens and receptors should not be shed into the blood circulation.

**Internalization of targeted conjugates.** Whether targeted conjugates can be internalized after binding to target cells is an important criterion in the selection of proper targeting ligands.

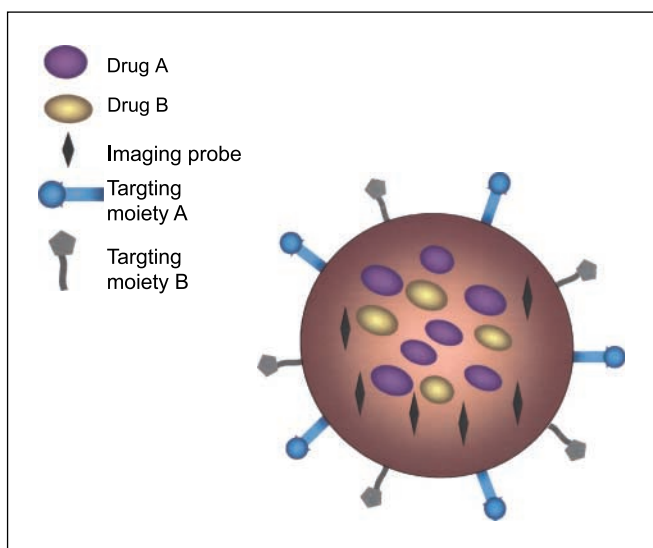
Internalization usually occurs via receptor-mediated endocytosis (Fig. 3). Using the example of the folate receptor, when a folate-targeted conjugate binds with folate receptor on the cell surface, the invaginating plasma membrane envelopes the complex of the receptor and ligand to form an endosome. Newly formed endosomes are transferred to target organelles. As the pH value in the interior of the endosome becomes acidic and lysozymes are activated, the drug is released from the conjugate and enters the cytoplasm, provided the drug has the proper physico-chemical properties to cross the endosomal membrane. Released drugs are then trafficked by their target organelle depending on the drug. Meanwhile, the folate receptor released from the conjugate returns to the cell membrane to start a second round of transport by binding with new folate-targeted conjugates (46).

### Therapeutic Application of Ligand-Targeted Nanoparticles

The folate receptor is a well-known tumor marker that binds vitamin folate and folate-drug conjugates with a high affinity and carries these bound molecules into the cells via receptor-mediated endocytosis (46). We have checked the incidence of folate receptor expression in human head and neck primary and metastatic tumor tissues and compared them with normal tissues such as the bone marrow. Folate receptor expression was found in 53% of these tumor samples whereas normal bone marrow cells did not show any folate receptor expression (47). Recently, we generated a new folate receptor-targeted nanoparticle formulation of paclitaxel using heparin as a carrier [heparin-folate-Taxol (paclitaxel), HFT] and tested it using nude mouse animal models. This novel ternary nanoparticle HFT showed more potent activity against the growth of tumor xenografts of human KB and paclitaxel-resistant KB derivatives than did binary heparin-Taxol or free drug (paclitaxel; ref. 48).

Aptamers are oligonucleic acids such as DNA or RNA that bear unique three-dimensional conformations capable of binding to target antigens with high affinity and specificity (49). They have been applied to drug delivery systems as a ligand to enhance selectivity (50). The *in vivo* efficacy of





**Fig. 4.** Multifunctional nanoparticle. The following are illustrated: the ability to carry one or more therapeutic agents; biomolecular targeting through one or more conjugated antibodies or other recognition agents; imaging signal amplification, by way of co-encapsulated contrast agents. These nanoparticles will eventually be capable of detecting malignant cells (active targeting moiety), visualizing their location in the body (real-time *in vivo* imaging), killing the cancer cells without side effects by saving normal cells (active targeting and controlled drug released system or photothermal ablation), and monitoring the treatment effect in real time.

docetaxel-encapsulated poly(lactic-co-glycolic acid) nanoparticle conjugated with an aptamer to target prostate-specific membrane antigens was evaluated using an animal model (51).

Transferrin, a serum glycoprotein, works as a transporter to deliver iron through the blood and into cells by binding to the transferrin receptor and subsequently being internalized via receptor-mediated endocytosis (52). Because the transferrin receptor is overexpressed in tumor tissues compared with normal tissues, it has been investigated as a target for tumor-specific drug delivery (53). Transferrin-conjugated paclitaxel-loaded [poly(lactic-co-glycolic acid) polymer] nanoparticles displayed greater inhibitory effects on cell growth than free paclitaxel in MCF-7 and MCF-7/Adr cells (54). Transferrin was also conjugated to liposomes to increase the transfection efficacy of p53, resulting in the sensitization of the transfected cancer cells/xenografts to ionizing radiation (55).

Lectins are proteins that recognize and bind to carbohydrate moieties attached to protein molecules (glycans) on the extracellular side of the plasma membrane. Cancer cells often express different glycans compared with their normal counterparts. Therefore, lectins could be used as targeting molecules to direct drugs specifically to desired cells and tissues (56). This protein (lectin)-carbohydrate interaction can be applied to develop two types of nanoparticles: one incorporates lectins into nanoparticles as targeting moieties that are directed to cell-surface carbohydrates (direct lectin targeting), and the other is a reverse scenario in which carbohydrate moieties are coupled to

nanoparticles to target lectins (reverse lectin targeting; ref. 57). An example of a drug conjugate using this particular reverse-lectin targeting is PK2, an actively targeted variant of the already developed PK1, in which the targeting moiety galactosamine is attached to the polymer backbone. Gamma-camera imaging showed that the PK2 targeting conjugate effectively targeted the liver whereas the nonconjugated counterpart (PK1) showed no targeting. Phase I/II clinical trials have been completed in patients with primary or metastatic liver cancers (58).

### Potential of Nanoparticles to Overcome Drug Resistance

Drug resistance has emerged as a major obstacle limiting the therapeutic efficacy of chemotherapeutic agents. Among several mechanisms of drug resistance, P-glycoprotein is the best known and most extensively investigated (59). It has been suggested that nanoparticles may be able to circumvent P-glycoprotein-mediated resistance. One possible mechanism is that nanoparticles may avoid recognition by the P-glycoprotein efflux pump by means of being enveloped in an endosome when entering the cell, leading to high intracellular drug concentrations (Fig. 3; ref. 60). Ligand-targeted strategies, especially those using receptor-targeting ligands, may have particular potential for overcoming drug resistance because these ligands are usually internalized via receptor-mediated endocytosis. Indeed, a folate receptor-targeted, pH-sensitive polymeric micelle containing doxorubicin (61) and transferrin-conjugated paclitaxel-loaded nanoparticles (54) exhibited greater inhibitory activity against drug-resistant MCF-7 cells and/or xenografts than their nontargeted free drug counterparts.

### Future Direction and Opportunities

Together with the progression of nanoscale drug delivery systems, advances in nanoscale imaging suggest the potential for the development of multifunctional "smart" nanoparticles that may facilitate the realization of individualized cancer therapy. Almost all types of nanoparticles including polymeric nanoparticles (62), nanocrystals (63), polymeric micelles (19), dendrimers (64), and carbon nanotubes (65) have been evaluated for their suitability as multifunctional nanoparticles that can be applied for simultaneous *in vivo* imaging and treatment of cancers. Eventually, multiplex nanoparticles may be capable of detecting malignant cells (active targeting moiety), visualizing their location in the body (real-time *in vivo* imaging), killing the cancer cells with minimal side effects by sparing normal cells (active targeting and controlled drug release or photothermal ablation), and monitoring treatment effects in real time (Fig. 4).

### Acknowledgments

We thank Dr. Anthea Hammond for her much appreciated diligent assistance in editing this manuscript.

### References

- Ross JS, Schenkein DP, Pietrusko R, et al. Targeted therapies for cancer 2004. *Am J Clin Pathol* 2004; 122:598–609.
- Morgillo F, Lee HY. Resistance to epidermal growth factor receptor-targeted therapy. *Drug Resist Updat* 2005;8:298–310.
- Maeda H. The enhanced permeability and retention (EPR) effect in tumor vasculature: the key role of tumor-selective macromolecular drug targeting. *Adv Enzyme Regul* 2001;41:189–207.
- Allen TM. Ligand-targeted therapeutics in anticancer therapy. *Nat Rev Cancer* 2002;2:750–63.

5. Larsen AK, Escargueil AE, Skladanowski A. Resistance mechanisms associated with altered intracellular distribution of anticancer agents. *Pharmacol Ther* 2000;85:217–29.
6. Rawat M, Singh D, Saraf S, Saraf S. Nanocarriers: promising vehicle for bioactive drugs. *Biol Pharm Bull* 2006;29:1790–8.
7. Gradishar WJ, Tjulandin S, Davidson N, et al. Phase III trial of nanoparticle albumin-bound paclitaxel compared with polyethylated castor oil-based paclitaxel in women with breast cancer. *J Clin Oncol* 2005;23:7794–803.
8. Green MR, Manikhas GM, Orlov S, et al. Abraxane, a novel Cremophor-free, albumin-bound particle form of paclitaxel for the treatment of advanced non-small-cell lung cancer. *Ann Oncol* 2006;17:1263–8.
9. Nyman DW, Campbell KJ, Hersh E, et al. Phase I and pharmacokinetics trial of ABI-007, a novel nanoparticle formulation of paclitaxel in patients with advanced nonhematologic malignancies. *J Clin Oncol* 2005;23:7785–93.
10. Li C. Poly(L-glutamic acid)-anticancer drug conjugates. *Adv Drug Deliv Rev* 2002;54:695–713.
11. Sabbatini P, Aghajanian C, Dizon D, et al. Phase II study of CT-2103 in patients with recurrent epithelial ovarian, fallopian tube, or primary peritoneal carcinoma. *J Clin Oncol* 2004;22:4523–31.
12. Bhatt R, de Vries P, Tulinsky J, et al. Synthesis and *in vivo* antitumor activity of poly(L-glutamic acid) conjugates of 20S-camptothecin. *J Med Chem* 2003;46:190–3.
13. Duncan R. The dawning era of polymer therapeutics. *Nat Rev Drug Discov* 2003;2:347–60.
14. Vasey PA, Kaye SB, Morrison R, et al. Phase I clinical and pharmacokinetic study of PK1 [N-(2-hydroxypropyl)methacrylamide copolymer doxorubicin]: first member of a new class of chemotherapeutic agents-drug-polymer conjugates. *Clin Cancer Res* 1999;5:83–94.
15. Adams ML, Lavasanifar A, Kwon GS. Amphiphilic block copolymers for drug delivery. *J Pharm Sci* 2003;92:1343–55.
16. Batrakova EV, Dorodnyh TY, Klinskii EY, et al. Anthracycline antibiotics non-covalently incorporated into the block copolymer micelles: *in vivo* evaluation of anti-cancer activity. *Br J Cancer* 1996;74:1545–52.
17. Nakanishi T, Fukushima S, Okamoto K, et al. Development of the polymer micelle carrier system for doxorubicin. *J Control Release* 2001;74:295–302.
18. Kim TY, Kim DW, Chung JY, et al. Phase I and pharmacokinetic study of Genexol-PM, a cremophor-free, polymeric micelle-formulated paclitaxel, in patients with advanced malignancies. *Clin Cancer Res* 2004;10:3708–16.
19. Nasongkla N, Bey E, Ren J, Ai H, Khemtong C, Guthi JS. Multifunctional polymeric micelles as cancer-targeted, MRI-ultrasensitive drug delivery systems. *Nano Lett* 2006;6:2427–30.
20. Svenson S, Tomalia DA. Dendrimers in biomedical applications—reflections on the field. *Adv Drug Deliv Rev* 2005;57:2106–29.
21. Malik N, Evagorou EG, Duncan R. Dendrimer-platinate: a novel approach to cancer chemotherapy. *Anticancer Drugs* 1999;10:767–76.
22. Markman M. Pegylated liposomal doxorubicin in the treatment of cancers of the breast and ovary. *Expert Opin Pharmacother* 2006;7:1469–74.
23. Rivera E. Current status of liposomal anthracycline therapy in metastatic breast cancer. *Clin Breast Cancer* 2003;4:S76–83.
24. Rosenthal E, Poizat-Martin I, Saint-Marc T, Spano JP, Cacoub P, Group DNXS. Phase IV study of liposomal daunorubicin (DaunoXome) in AIDS-related Kaposi sarcoma. *Am J Clin Oncol* 2002;25:57–9.
25. Hofheinz RD, Gnad-Vogt SU, Beyer U, Hochhaus A. Liposomal encapsulated anti-cancer drugs. *Anticancer Drugs* 2005;16:691–707.
26. Wu J, Liu Q, Lee RJ. A folate receptor-targeted liposomal formulation for paclitaxel. *Int J Pharm* 2006;316:148–53.
27. Manchester M, Singh P. Virus-based nanoparticles (Vnanoparticles): platform technologies for diagnostic imaging. *Adv Drug Deliv Rev* 2006;58:1505–22.
28. Singh P, Destito G, Schneemann A, Manchester M. Canine parvovirus-like particles, a novel nanomaterial for tumor targeting. *J Nanobiotechnology* 2006;4:2.
29. Flenniken ML, Willits DA, Harmsen AL, et al. Melanoma and lymphocyte cell-specific targeting incorporated into a heat shock protein cage architecture. *Chem Biol* 2006;13:161–70.
30. Flenniken ML, Liepold LO, Crowley BE, Willits DA, Young MJ, Douglas T. Selective attachment and release of a chemotherapeutic agent from the interior of a protein cage architecture. *Chem Commun (Camb)* 2005;4:447–9.
31. Bianco A, Kostarelos K, Partidos CD, Prato M. Biomedical applications of functionalised carbon nanotubes. *Chem Commun* 2005;5:571–7.
32. Bianco A, Kostarelos K, Prato M. Applications of carbon nanotubes in drug delivery. *Curr Opin Chem Biol* 2005;9:674–9.
33. Wu W, Wieckowski S, Pastorin G, et al. Targeted delivery of amphotericin B to cells by using functionalized carbon nanotubes. *Angew Chem Int Ed Engl* 2005;44:6358–62.
34. Pastorin G, Wu W, Wieckowski S, et al. Double functionalisation of carbon nanotubes for multimodal drug delivery. *Chem Commun* 2006;11:1182–4.
35. Moghimi SM, Hunter AC, Murray JC. Long-circulating and target-specific nanoparticles: theory to practice. *Pharmacol Rev* 2001;53:283–318.
36. Wisse E, Braet F, Luo D, et al. Structure and function of sinusoidal lining cells in the liver. *Toxicol Pathol* 1996;24:100–11.
37. Yuan F, Dellian M, Fukumura D, et al. Vascular permeability in a human tumor xenograft: molecular size dependence and cutoff size. *Cancer Res* 1995;55:3752–6.
38. Moghimi SM, Szebeni J. Stealth liposomes and long circulating nanoparticles: critical issues in pharmacokinetics, opsonization and protein-binding properties. *Prog Lipid Res* 2003;42:463–78.
39. Harris JM, Martin NE, Modi M. Pegylation: a novel process for modifying pharmacokinetics. *Clin Pharmacokinet* 2001;40:539–51.
40. Carmeliet P, Jain RK. Angiogenesis in cancer and other diseases. *Nature* 2000;407:249–57.
41. Pelicano H, Martin DS, Xu RH, Huang P. Glycolysis inhibition for anticancer treatment. *Oncogene* 2006;25:4633–46.
42. Yatvin MB, Kreutz W, Horwitz BA, Shinitzky M. pH-sensitive liposomes: possible clinical implications. *Science* 1980;210:1253–5.
43. Deryugina EI, Quigley JP. Matrix metalloproteinases and tumor metastasis. *Cancer Metastasis Rev* 2006;25:9–34.
44. Mansour AM, Drevs J, Esser N, et al. A new approach for the treatment of malignant melanoma: enhanced antitumor efficacy of an albumin-binding doxorubicin prodrug that is cleaved by matrix metalloproteinase 2. *Cancer Res* 2003;63:4062–6.
45. Tolcher AW, Sugarman S, Gelmon KA, et al. Randomized phase II study of BR96-doxorubicin conjugate in patients with metastatic breast cancer. *J Clin Oncol* 1999;17:478–84.
46. Leamon CP, Reddy JA. Folate-targeted chemotherapy. *Adv Drug Deliv Rev* 2004;56:1127–41.
47. Saba NF, Wang X, Tighiouart M, et al. Examining expression of folate receptors in squamous cell carcinoma of the head and neck (SCCHN) as a target for nanotherapeutic drugs. *Proc Am Assoc Cancer Res* 2007;48:abstract LB-174.
48. Cho K, Wang X, Kim GJ, et al. Investigation of Taxol-resistance using folate-targeted ternary therapeutic nanoparticle. *Proc Am Assoc Cancer Res* 2007;48:abstract 2311.
49. Hicke BJ, Stephens AW, Gould T, et al. Tumor targeting by an aptamer. *J Nucl Med* 2006;47:668–78.
50. Farokhzad OC, Jon S, Khademhosseini A, Tran TN, Lavan DA, Langer R. Nanoparticle-aptamer bioconjugates: a new approach for targeting prostate cancer cells. *Cancer Res* 2004;64:7668–72.
51. Farokhzad OC, Cheng J, Tepy BA, et al. Targeted nanoparticle-aptamer bioconjugates for cancer chemotherapy *in vivo*. *Proc Natl Acad Sci U S A* 2006;103:6315–20.
52. Qian ZM, Tang PL. Mechanisms of iron uptake by mammalian cells. *Biochim Biophys Acta* 1995;1269:205–14.
53. Qian ZM, Li H, Sun H, Ho K. Targeted drug delivery via the transferrin receptor-mediated endocytosis pathway. *Pharmacol Rev* 2002;54:561–87.
54. Sahoo SK, Labhasetwar V. Enhanced antiproliferative activity of transferrin-conjugated paclitaxel-loaded nanoparticles is mediated via sustained intracellular drug retention. *Mol Pharm* 2005;2:373–83.
55. Xu L, Pirolo KF, Tang WH, Rait A, Chang EH. Transferrin-liposome-mediated systemic p53 gene therapy in combination with radiation results in regression of human head and neck cancer xenografts. *Hum Gene Ther* 1999;10:2941–52.
56. Bies C, Lehr CM, Woodley JF. Lectin-mediated drug targeting: history and applications. *Adv Drug Deliv Rev* 2004;56:425–35.
57. Minko T. Drug targeting to the colon with lectins and neoglycoconjugates. *Adv Drug Deliv Rev* 2004;56:491–509.
58. Seymour LW, Ferry DR, Anderson D, et al. Hepatic drug targeting: phase I evaluation of polymer-bound doxorubicin. *J Clin Oncol* 2002;20:1668–76.
59. Gottesman MM, Fojo T, Bates SE. Multidrug resistance in cancer: role of ATP-dependent transporters. *Nat Rev Cancer* 2002;2:48–58.
60. Wong HL, Bendayan R, Rauth AM, Xue HY, Babakhanian K, Wu XY. A mechanistic study of enhanced doxorubicin uptake and retention in multidrug resistant breast cancer cells using a polymer-lipid hybrid nanoparticle system. *J Pharmacol Exp Ther* 2006;317:1372–81.
61. Lee ES, Na K, Bae YH. Doxorubicin loaded pH-sensitive polymeric micelles for reversal of resistant MCF-7 tumor. *J Control Release* 2005;103:405–18.
62. Cho YW, Park SA, Han TE, Son DH. *In vivo* tumor targeting and radionuclide imaging with self-assembled nanoparticles: mechanisms, key factors, and their implications. *Biomaterials* 2007;28:1236–47.
63. Seo W, Lee J, Sun X, Suzuki Y. FeCo/graphitic-shell nanocrystals as advanced magnetic-resonance-imaging and near-infrared agents. *Nat Mater* 2006;5:971–6.
64. Kukowska-Latallo JF, Candido KA, Cao Z, et al. Nanoparticle targeting of anticancer drug improves therapeutic response in animal model of human epithelial cancer. *Cancer Res* 2005;65:5317–24.
65. Kam NW, O'Connell M, Wisdom JA, Dai H. Carbon nanotubes as multifunctional biological transporters and near-infrared agents for selective cancer cell destruction. *Proc Natl Acad Sci U S A* 2005;102:11600–5.