

Hematopoietic-specific β 1 tubulin participates in a pathway of platelet biogenesis dependent on the transcription factor NF-E2

Patrick Lecine, Joseph E. Italiano Jr, Sang-We Kim, Jean-Luc Villeval, and Ramesh A. Shivdasani

The cellular and molecular bases of platelet release by terminally differentiated megakaryocytes represent important questions in cell biology and hematopoiesis. Mice lacking the transcription factor NF-E2 show profound thrombocytopenia, and their megakaryocytes fail to produce proplatelets, the microtubule-based precursors of blood platelets. Using mRNA subtraction between normal and NF-E2-deficient megakaryocytes, cDNA was isolated encoding β 1 tubulin, the most divergent β tubulin isoform. In NF-E2-deficient

megakaryocytes, β 1 tubulin mRNA and protein are virtually absent. The expression of β 1 tubulin is exquisitely restricted to platelets and megakaryocytes, where it appears late in differentiation and localizes to microtubule shafts and coils within proplatelets. Restoring NF-E2 activity in a megakaryoblastic cell line or in NF-E2-deficient primary megakaryocytes rescues the expression of β 1 tubulin. Re-expressing β 1 tubulin in isolation does not, however, restore proplatelet formation in the defective megakaryocytes, in-

dicating that other critical factors are required; indeed, other genes identified by mRNA subtraction also encode structural and regulatory components of the cytoskeleton. These findings provide critical mechanistic links between NF-E2, platelet formation, and selected microtubule proteins, and they also provide novel molecular insights into thrombopoiesis. (Blood. 2000;96:1366-1373)

© 2000 by The American Society of Hematology

Introduction

Megakaryocyte differentiation culminates in the release of hundreds of platelets by mechanisms that are poorly understood.¹ Use of thrombopoietin (TPO), the major cytokine regulator of megakaryocyte growth and differentiation,² has allowed expansion and differentiation of megakaryocytes in culture, leading to cellular and molecular studies that were not previously possible.³⁻⁵ Concomitantly, targeted disruption of several transcription factor genes in mice has revealed phenotypes of moderate to severe thrombocytopenia and paved the way for dissection of the transcriptional control of platelet biogenesis.⁶⁻⁹

The transcription factor NF-E2 binds AP-1-like sites within selected erythroid-specific *cis*-elements, including the β -globin locus control region.¹⁰⁻¹² NF-E2 is a heterodimer composed of 2 basic-leucine zipper (bZip) subunits of 45 and 18 kd and functions as a sequence-specific transcriptional activator.¹³⁻¹⁶ Mice lacking the hematopoietic-restricted p45 NF-E2 protein show profound thrombocytopenia associated with increased megakaryocytes and lethal hemorrhage.⁶ p45 NF-E2^{-/-} megakaryocytes are polyploid and have a large cytoplasm containing abundant internal membranes but few intact granules. When cultured *in vitro*, these cells never develop proplatelets,¹⁷ which are considered to be the immediate precursors of blood platelets.^{3,18,19} Thrombocytopenia and megakaryocytosis are completely reproduced in lethally irradiated wild-type mice on hematopoietic reconstitution by p45 NF-E2^{-/-} cells.¹⁷ Targeted disruption of the gene encoding MafG, the major binding partner of p45 NF-E2 in megakaryocytes,⁵ also results in thrombocytopenia.⁹ These findings implicate NF-E2 as an

essential regulator of terminal megakaryocyte differentiation and platelet formation and indicate that its transcriptional targets are expressed within megakaryocytes.

To explore the molecular basis of platelet production and release, we identified candidate transcriptional targets of NF-E2 using mRNA subtraction. The predominant cDNA in the subtracted library encodes β 1 tubulin, the most evolutionarily divergent isoform of β tubulin and a hematopoietic-specific protein.²⁰ The eukaryotic tubulins, α and β , are 2 highly homologous proteins that form the core of microtubules²¹; α - β tubulin heterodimers integrate into linear protofilaments that assemble into microtubules by parallel association.²² Microtubules generate intracellular forces that drive diverse cellular functions, including chromosome segregation, motility of cilia and flagella, transport of vesicles and organelles, and cell morphogenesis.²³ Numerous distinct α and β tubulin genes have been identified in all species^{21,24,25} and typically share a high degree of homology within each family. Most sequence divergence is concentrated in the carboxyl terminal region,²⁶ which is exposed on the outer surface of microtubules and is thought to interact with microtubule-associated proteins.²⁷⁻²⁹ Most murine α and β tubulin isotypes are expressed ubiquitously, though β 4 is present only in the brain and β 1 only in hematopoietic tissues.^{20,24,30} Based on C-terminal sequence divergence, the various β tubulin isoforms harbor considerable potential for functional specificity, possibly with overlap in other cellular functions. Indeed, many studies have demonstrated that β tubulin isotypes

From the Departments of Adult Oncology and Cancer Biology, Dana-Farber Cancer Institute, and the Department of Medicine, Brigham & Women's Hospital and Harvard Medical School, Boston, MA.

Submitted December 20, 1999; accepted April 7, 2000.

Supported by a fellowship from the American Society of Hematology (P.L.), a National Institutes of Health training grant (J.E.I.), the Asian Life Science Institute, Korea (S.W.K.), and awards from the Cancer Research Fund of the Damon Runyon-Walter Winchell Foundation (R.A.S.) and the National

Institutes of Health (R.A.S.).

Reprints: Ramesh A. Shivdasani, Dana-Farber Cancer Institute, 44 Binney St, Boston, MA 02115; e-mail: ramesh_shivdasani@dfci.harvard.edu.

The publication costs of this article were defrayed in part by page charge payment. Therefore, and solely to indicate this fact, this article is hereby marked "advertisement" in accordance with 18 U.S.C. section 1734.

© 2000 by The American Society of Hematology

display unique biochemical properties and are partially, but not completely, interchangeable.^{25,31,32}

Here we show that the expression of β 1 tubulin mRNA and protein is almost completely abolished in the absence of NF-E2. In normal mice this distinct β tubulin isoform is restricted in expression to platelets and megakaryocytes, where it appears late in differentiation and localizes to the microtubules and microtubule rings found in proplatelets. Restoration of NF-E2 activity in a p45 NF-E2-null megakaryoblastic cell line induces the expression of β 1 tubulin mRNA and protein. Considered together, these findings provide a mechanistic link between NF-E2, formation of platelet precursors (proplatelets), and specific components of the microtubule cytoskeleton. p45 NF-E2^{-/-} cells infected with a retrovirus containing p45 NF-E2 cDNA are rescued for both β 1 tubulin expression and proplatelet formation; in contrast, the isolated expression of β 1 tubulin in these cells does not restore proplatelet production in vitro. This suggests that other components of the cytoskeletal machinery may also be regulated by NF-E2.

Materials and methods

Cell culture

p45 NF-E2^{+/-} mice were maintained on an inbred 129/Sv genetic background, and fetal liver cultures were grown as described previously.¹⁷ Whole livers were recovered from mouse fetuses between embryonic days (E)13 and E15, and single-cell suspensions were prepared by successive passage through 22- and 25-gauge needles. Fetal liver and L8057 cells were cultured in Dulbecco's modified Eagle medium (DMEM; Gibco BRL, Bethesda, MD) supplemented with 10% fetal calf serum, 2 mmol/L L-glutamine, 50 U/mL penicillin, and 50 μ g/mL streptomycin. Fetal liver cultures were further supplemented with 1% tissue culture supernatant from a fibroblast cell line engineered to secrete recombinant human TPO.³³ Cultured primary megakaryocytes were harvested between the third and fifth days of culture. To generate megakaryocyte colonies in semi-solid medium, 1 to 5 \times 10⁵ fetal liver cells were cultured in 1.2 mL 0.8% methylcellulose in Iscove's modified Dulbecco's medium, supplemented with 30% fetal bovine serum (FBS; Stem Cell Technologies, Vancouver, BC, Canada) and 1% tissue culture supernatant from the TPO producer cell line. Proplatelet formation was examined after 7 days, when individual colonies were picked under direct microscopic observation; groups of 100 colonies were pooled for analysis.

Stably transfected L8057 cell lines were generated by electroporation of linearized plasmid constructs carrying p45 or p18 NF-E2 cDNA under control of the human elongation factor (EF)-1 α promoter³⁴ and a drug-resistance cassette. p45-Transfected cells were selected in 1 mg/mL G418 (Gibco BRL), and p18-transfected cells were selected in 100 μ g/mL Hygromycin B (Sigma, St Louis, MO). Stable lines were subcloned by limiting dilution and maintained in cultures containing half the above drug concentrations.

Purification of primary megakaryocytes and hematopoietic progenitors

mRNA subtraction was performed on entire cultures of fetal liver cells in TPO, without additional purification of megakaryocytes. Other experiments were performed on purified megakaryocytes (populations containing more than 90% acetylcholinesterase-positive cells) obtained by sedimentation of concentrated cultures through 2 gradients of phosphate-buffered saline (PBS) with 1.5% and 3% bovine serum albumin (BSA) at room temperature.⁴ Lin⁻ cells were obtained by the depletion of mature blood cell lineages by incubation of fetal liver cells for 30 minutes at 4°C with monoclonal antibodies directed against the differentiation markers Mac-1, GR-1, B220, and TER-119 (PharMingen, Los Angeles, CA), followed by the addition of magnetic beads coated with sheep antirat IgG (Dyna, Oslo, Norway) for 30 minutes at 4°C and the magnetic removal of bound cells.

Immunoblot analysis

Immunoblot analysis was performed according to standard protocols.³⁵ Cell extracts were resolved by sodium dodecyl sulfate-polyacrylamide gel electrophoresis, transferred to nitrocellulose, and incubated with 1:1000 dilution of either anti-p45 NF-E2, anti-Tal-1 (provided by Richard Baer, University of Texas), or anti- β 1 tubulin³⁶ (provided by Sally Lewis and Nick Cowan, New York University) rabbit antisera for 1 hour at room temperature. After 5 washes, incubation with 1:1000 dilution of horseradish peroxidase (HRP)-conjugated donkey antirabbit IgG or HRP-conjugated Protein A (Amersham Life Sciences, Buckinghamshire, UK) for 1 hour, and 5 additional washes, bound antibodies were detected using an enzymatic chemiluminescence kit (Amersham). Immunoblot analyses with anti-pan β tubulin (Sigma) and anti-GAPDH (Biodesign International, Kennebunk, ME) monoclonal antibodies were performed with 1:2500 dilution for the primary antibody and 1:5000 HRP-conjugated goat antimouse IgG (Amersham).

Indirect immunofluorescence

Monoclonal antibodies specific for β tubulin and fluorescein isothiocyanate and tetramethylrhodamine isothiocyanate conjugates of goat antirabbit and goat antimouse IgG were obtained from Sigma, and anti- β 1 tubulin antiserum was obtained as above. Primary and secondary antibodies were used at 5 μ g/mL and at 1:200 dilution, respectively, in PBS + 1% BSA. Cultured megakaryocytes were cyto-centrifuged at 500g for 4 minutes onto poly-L-lysine-coated coverslips, fixed in 4% formaldehyde in Hanks' balanced salt solution (HBSS; Gibco BRL) for 20 minutes, permeabilized with 0.5% Triton X-100 in HBSS containing 0.1 mmol/L EGTA, and blocked with 0.5% BSA in PBS. Specimens were incubated in primary antibody for 3 to 6 hours, washed, treated with appropriate secondary antibodies for 1 hour, and washed again. Staining controls were processed identically except for the omission of the primary antibody. Preparations were observed with a Bio-Rad (Hercules, CA) MRC 1024 laser scanning confocal microscope (100 \times differential interference contrast-apochromatic oil immersion objective) equipped with Lasersharp 3.1 software, or a Zeiss (Oberkochen, Germany) Axiovert S100 microscope (40 \times phase-contrast objective) equipped with appropriate filters for fluorescein isothiocyanate and tetramethylrhodamine isothiocyanate fluorescence.

Subtractive hybridization

The PCR-Select cDNA subtraction kit (Clontech, Palo Alto, CA) was used for cDNA synthesis and suppressive subtractive hybridization, according to the recommended protocol. Briefly, 1 μ g poly-(A)⁺ RNA from wild-type and p45 NF-E2^{-/-} fetal livers cultured in the presence of TPO were used to generate double-stranded cDNA. *Rsa*I-digested wild-type cDNA was used as the tester sample and ligated to 2 unique adapters. *Rsa*I-digested p45 NF-E2-null cDNA was used as the driver sample without adapters. Hybridization of the tester population, with an excess of driver and an amplification of subtracted species with oligonucleotide primers corresponding to the 2 unique adapters in the tester cDNA, produced a pool of polymerase chain reaction (PCR)-amplified fragments enriched in the wild-type, but absent or reduced in the p45 NF-E2^{-/-}, megakaryocytes. The PCR products were cloned and sequenced.

Immunohistochemistry

Tissues were obtained from adult mice, fixed in 4% paraformaldehyde in PBS overnight at 4°C, and embedded in paraffin, and 5- μ m sections were cut onto charged glass slides. Sections were cleared with xylene, rehydrated in graded ethanols, quenched in 40% methanol and 0.3% hydrogen peroxide for 30 minutes at room temperature, washed, and incubated with the β 1 tubulin or normal rabbit (control) sera at a dilution of 1:100 for 1 hour at room temperature. After washes in PBS, sections were further incubated with donkey antirabbit-HRP antibody at 1:200 dilution for 30 minutes and washed in PBS. Peroxidase activity was revealed using 0.02% 3,3'-diaminobenzidine (Vector, Burlingame, CA) and counterstained with hematoxylin for 15 to 30 seconds. Sections were then dehydrated in graded ethanols, resealed in xylene, and mounted for microscopy.

RNA isolation, Northern blot analysis, and semiquantitative RT-PCR

Total cellular RNA was isolated using RNeasy B (Tel-Test, Friendswood, TX) as recommended by the manufacturer. Northern blot analysis was performed as described.³⁷ RT-PCR analysis was conducted as described previously,⁶ using 0.1 μ Ci α -[³²P]dCTP as a radiotracer; the reaction products were resolved by nondenaturing PAGE and detected by autoradiography. Annealing temperature for PCR was 60°C for β tubulin and 58°C for other reactions; all reactions were confirmed to be in the linear range of amplification. Primer sequences and sizes of the amplified fragments were as follows:

p45 NF-E2 (529 bp)

forward 5' AACTTGCCGGTAGATGACTTTAAT 3'
reverse 5' CACCAAATACTCCAGGTGATATG 3'

β 1 tubulin coding sequence (492 bp)

forward 5' ATCAGGGAGGAGTACCCGGATCGGA 3'
reverse 5' CCCGGAATATACAAGCCACAGTCAG 3'

β 1 tubulin 3' untranslated region (311 bp)

forward 5' GCATGATGCTGGATTCTCAAGTCTGG 3'
reverse 5' CCGTGTCTTCCGTCACAGCAAAGT 3'

β 2 tubulin (465 bp)

forward 5' CGAGCCCTGACGGTGCCCGAGCTG 3'
reverse 5' GAACTCTCCCTTCTCCTCAGCCTG 3'

β 4 tubulin (520 bp)

forward 5' CCAGGATTCGCACCCTTGACCAGC 3'
reverse 5' AGCTCTCTTCCGAACTCGCCCTC 3'

β 5 tubulin (396 bp)

forward 5' CGCCACGGCCGGTACCTCACAGTT 3'
reverse 5' TCCGAAATCTCTTCTCTTCCGC 3'

hypoxanthine phosphoribosyl transferase (HPRT, 249 bp)

forward 5' CACAGGACTAGAACCTGC 3'
reverse 5' GCTGGTGAATAAFACTCT 3'

glyceraldehyde-3-phosphate dehydrogenase (GAPDH, 452 bp)

forward 5' ACCACAGTCCATGCCATCAC 3'
reverse 5' TCCACCACCCTGTTGCTGTGA 3'

α -globin (331 bp)

forward 5' CTCTCTGGGGAAGACAAAAGCAAC 3'
reverse 5' GGTGGCTAGCCAAGGTACACAGCA 3'

Retrovirus production and infection of Lin⁻ cells

The virus is based on the MPZen2 vector containing a 3' long terminal repeat derived from myeloproliferative sarcoma virus.³⁸ p45 NF-E2 and β 1 tubulin cDNA were amplified by PCR and inserted into the polylinker site. EBNA 293 cells (Invitrogen, Carlsbad, CA) were plated at a density of 2×10^6 cells/10-cm dish in DMEM (Gibco BRL) containing 10% fetal calf serum 4 days before transfection and were fed 1 day before transfection. The retroviral vector and 2 pN8e vectors (12 μ g each) encoding the gag/pol proteins from the murine Moloney leukemia virus and the G glycoprotein from the vesicular stomatitis virus (VSV-G)³⁹ (gift of Jay Morgenstern) were transfected using lipofectamine (Gibco BRL), according to the manufacturer's instructions, and fresh medium was added after 5 hours. Viral supernatants were collected 48, 72, and 96 hours after transfection, filtered through 0.45- μ m filters, and centrifuged at 50 000g at 4°C for 2 hours. Pellets were resuspended in 1.5 mL DMEM + 10% FBS with agitation for 24 hours at 4°C and frozen at -80°C until transduction.

E13.5 mouse fetal liver cells were depleted of erythrocytes by lysis in 0.15 mol/L NH₄Cl and expanded in vitro by culturing for 20 hours in DMEM supplemented with 10% FBS, 1% tissue culture supernatant from the TPO producer cell line, as above, and 0.1 μ g/mL c-kit ligand (R&D Systems, Minneapolis, MN). The VSV-G pseudotyped viruses were then used for infection of Lin⁻ fetal liver cells and isolated as described above by culturing with viral supernatants in the continued presence of c-kit ligand and TPO for an additional 36 hours. After 2 washes, infected cells were cultured in TPO alone for an additional 48 hours and were monitored periodically by light microscopy for proplatelets. As judged by immunofluorescence, the transduction efficiency of retroviruses carrying either p45 NF-E2 or β 1 tubulin cDNA was in the range of 5% to 10%.

Results

Isolation of a candidate effector of NF-E2 function in megakaryocytes

To identify putative transcriptional targets of NF-E2, we used suppressive subtractive hybridization^{40,41} to generate a cDNA library enriched for transcripts missing or reduced in the p45 NF-E2^{-/-} megakaryocytes. Approximately 10% of the subtracted library contains a DNA fragment from the 3' untranslated region of the gene encoding β 1 tubulin. Expression of this mRNA is reported to be restricted to hematopoietic tissues,²⁰ including blood platelets,³⁶ and β 1 tubulin is the most evolutionarily divergent murine β tubulin isoform, sharing only 78% amino acid homology with other β tubulins.²⁰ This raised the possibility of cell-specific functions, and the absence of a microtubule protein provides a plausible mechanism for the profound thrombocytopenia and failure of proplatelet formation in p45 NF-E2^{-/-} mice. We examined levels of mRNA encoding each of the known murine β tubulin isoforms²⁵ in megakaryocytes purified from wild-type and p45 NF-E2^{-/-} cultures. Only β 1 tubulin mRNA was down-regulated in p45 NF-E2^{-/-} cells (Figure 1A; analysis of isoforms β 2- β 4 not shown). Northern analysis confirmed the virtual absence of β 1 tubulin mRNA in p45 NF-E2^{-/-} megakaryocytes (Figure 1B).

Restricted expression of β 1 tubulin in late stages of megakaryocyte differentiation and platelets

Expression of β 1 tubulin mRNA in adult mice is reported to be restricted to the spleen and, to a lesser extent, to the developing lung and liver.²⁰ Using a cDNA probe derived from the unique 3' untranslated region of the murine β 1 tubulin gene, we confirmed this finding on Northern blot analysis (data not shown). We also used an isoform-specific β 1 tubulin antibody³⁶ to establish that the expression of β 1 tubulin protein is restricted to the spleen in adult mice, with lower levels in the lung (Figure 2A). Among all hematopoietic cells cultured from the fetal liver in the presence of TPO, this protein was detected exclusively in the megakaryocyte fraction isolated by density-gradient separation from other cell types (Figure 2B). Furthermore, immunohistochemistry on bone marrow and spleen from normal adult mice showed the β 1 tubulin protein to be remarkably confined to megakaryocytes (Figure 2C). However, we detected only a weak immunoblot signal in bone marrow compared to that found in the spleen (Figure 2A), despite the known presence of megakaryocytes in both tissues, which suggested a significant contribution toward the spleen signal from sequestered blood platelets. This was confirmed by

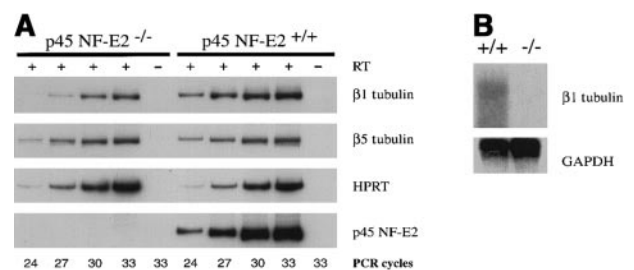
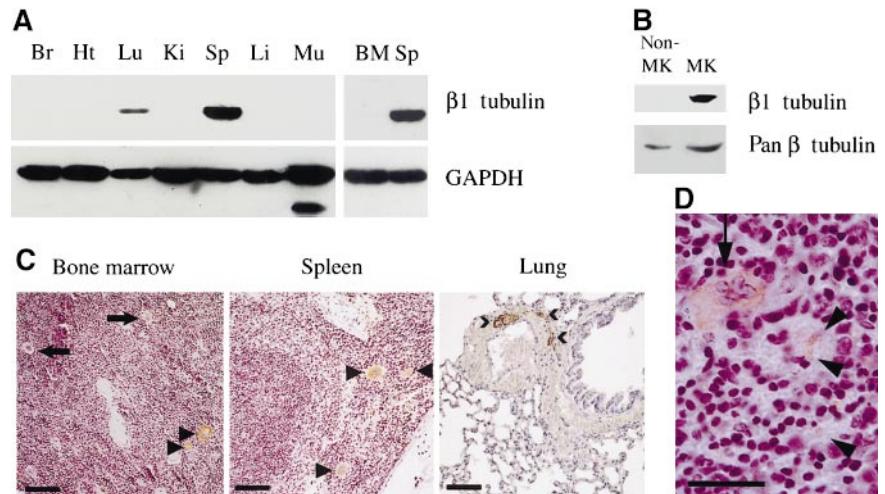


Figure 1. Specific down-regulation of β 1 tubulin mRNA in the absence of NF-E2. (A) Semiquantitative RT-PCR analysis on mRNA isolated from wild-type (+/+) and mutant (-/-) purified primary megakaryocytes using primers specific for the β 1 and β 5 tubulin isoforms, or for hypoxanthine phosphoribosyl transferase (HPRT) and p45 NF-E2 as controls. RT treatment of the template and numbers of PCR cycles are indicated. (B) Northern blot analysis of wild-type (+/+) and mutant (-/-) primary megakaryocytes, using β 1 tubulin and glyceraldehyde 3-phosphate dehydrogenase (GAPDH, loading control) cDNA probes.

Figure 2. Restricted expression of β 1 tubulin. Immunoblot analysis of (A) adult mouse tissues (Br, brain; Ht, heart; Lu, lung; Ki, kidney; Sp, spleen; Li, liver; Mu, muscle; BM, bone marrow) and (B) normal purified megakaryocytes and nonmegakaryocytic cells, using β 1 tubulin-specific antiserum or monoclonal antibodies against GAPDH or all β tubulin isoforms (pan β tubulin). (C) Immunohistochemistry of adult mouse tissues using β 1 tubulin-specific antiserum. Cellular staining in bone marrow and spleen is confined to a subset (arrowheads) of mature megakaryocytes (arrows point to unstained megakaryocytes). In lung, the signal derives from blood platelets within the abundant vasculature, occasionally detected as microthrombi (>). Background staining with the secondary antibody alone was negligible and is not shown. Scale bars: bone marrow, 300 μ m; spleen and lung, 150 μ m. (D) In the spleen, staining is noted both in megakaryocytes (arrow) and in particles most consistent with blood-derived platelets (arrowheads). Scale bar, 50 μ m.



immunohistochemical analysis of the spleen (Figure 2C,D), in which extramegakaryocytic staining was restricted to platelet-sized particles found interspersed with fully differentiated erythrocytes within sinusoids in the red pulp. Significantly, only large cells morphologically identifiable as mature megakaryocytes showed detectable levels of β 1 tubulin; immature megakaryocytes expressed little, if any, β 1 tubulin. This finding strongly suggests that the β 1 isoform appears in late stages of megakaryocyte differentiation. We failed to detect distinct cellular staining within bronchi, pneumocytes, or connective tissue in the lung; instead, immunostaining was confined to platelets within the vasculature (Figure 2C). Thus, β 1 tubulin was detected exclusively in a subpopulation of mature megakaryocytes and in platelets observed in largest numbers in the spleen and lung.

Absence of β 1 tubulin protein in p45 NF-E2^{-/-} megakaryocytes in vitro and in vivo

Cellular quantities of β tubulin mRNA and protein are regulated at 2 levels. First, there is transcriptional control that limits the expression of selected isoforms to specific cell types.³⁰ Second, a posttranslational mechanism sets the quantitative level of β tubulin through an autoregulatory pathway in which mRNA stability is governed by the concentration of the β tubulin polypeptide.^{42,43} Hence, the reduction of β 1 tubulin mRNA in p45 NF-E2^{-/-} megakaryocytes could in principle reflect the presence of excess free β tubulin monomers. However, the β 1 isoform was undetectable in purified megakaryocytes cultured from p45 NF-E2^{-/-} mice, and the total amount of β tubulin protein was significantly reduced (Figure 3A). Thus, in the absence of NF-E2 function there is selective and profound down-regulation of the transcription of β 1 tubulin, the most abundant β tubulin isoform in mature megakaryocytes. Reduced β 1 tubulin expression was observed not only in cultured megakaryocytes but also in the spleen and blood of adult p45 NF-E2^{-/-} mice (Figure 3B). Immunohistochemical analysis of the spleen and bone marrow further highlighted the absence of β 1 tubulin protein in p45 NF-E2^{-/-} mice, despite an abundance of megakaryocytes (data not shown).

β 1 tubulin expression correlates with terminal phases of megakaryocyte differentiation and localizes to proplatelets and to platelet marginal bands

One feature of advanced megakaryocyte differentiation is the formation of long cytoplasmic processes, called proplatelets, which are considered to be the immediate precursors of circulating blood platelets.^{3,19} The absence of NF-E2 results in a failure of proplatelet

formation.¹⁷ Because the generation of proplatelets involves extensive reorganization of the microtubule cytoskeleton,⁴⁴ β 1 tubulin is an excellent candidate mediator of thrombopoiesis. In cultures of wild-type hematopoietic cells, β 1 tubulin expression was restricted to cells producing proplatelets (Figure 4A). Immature megakaryocytes and other blood lineages, including granulocytes and monocytes recognized by morphologic criteria (arrows in Figure 4A), did not express β 1 tubulin. This finding complemented the in situ immunohistochemical analysis (Figure 2C) in which β 1 tubulin is detected only in a subset of megakaryocytes, and it was consistent with our observations¹⁷ that megakaryocytes cultured from fetal

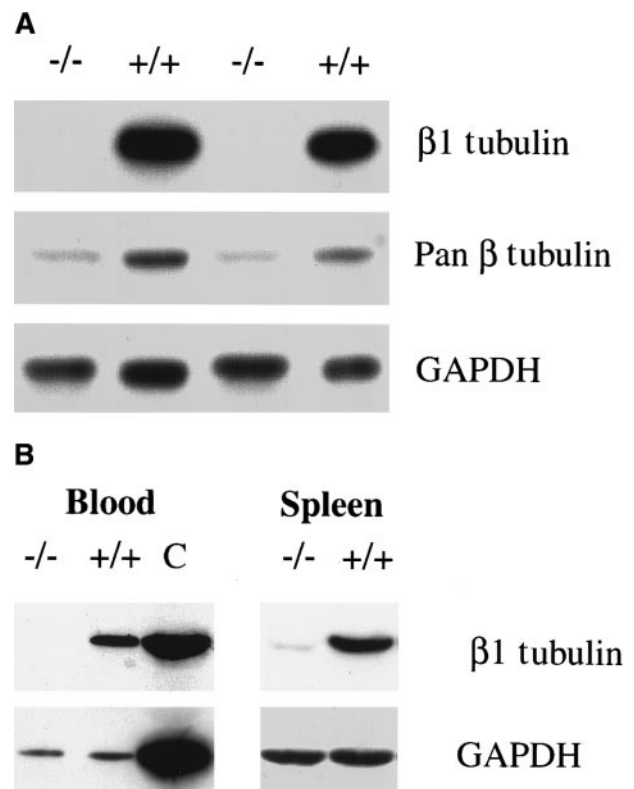


Figure 3. Absence of β 1 tubulin protein in the absence of NF-E2 in vitro and in vivo. Immunoblot analysis of (A) purified megakaryocytes from 2 different in vitro cultures and (B) wild-type or p45 NF-E2 mutant blood (left) and spleen (right) samples, using β 1 tubulin-specific antiserum, monoclonal antibodies directed against all β tubulin isoforms (pan β in A), or against GAPDH. C indicates a positive control (spleen).

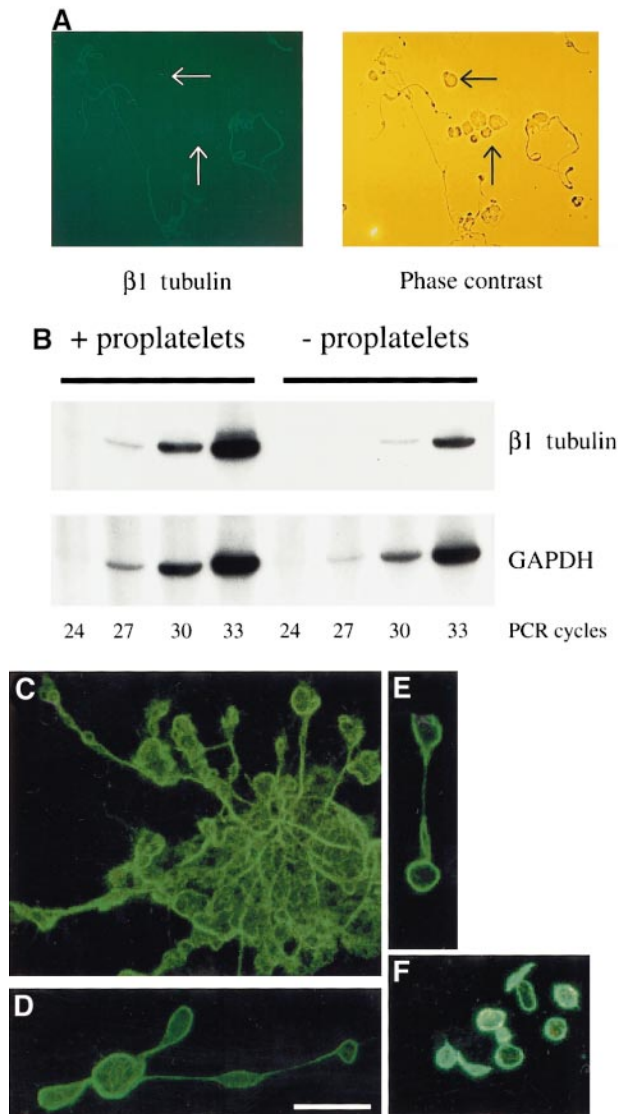


Figure 4. $\beta 1$ tubulin expression is associated with megakaryocytes forming proplatelets. (A) Immunofluorescence analysis of primary wild-type fetal liver cell cultures performed with $\beta 1$ tubulin-specific antiserum (left). Cells not forming proplatelets (arrows; including other blood cell lineages and immature megakaryocytes) are not stained. A phase-contrast image of the same microscopic field is shown on the right. (B) Semiquantitative RT-PCR analysis of $\beta 1$ tubulin mRNA expressed in wild-type megakaryocytic colonies forming (+) or not forming (-) proplatelets, using primers specific for $\beta 1$ tubulin and GAPDH (loading control). The numbers of PCR cycles are indicated. (C-F) Immunofluorescence analysis of individual cultured megakaryocytes (C), proplatelet fragments (D, E), and blood platelets (F) with $\beta 1$ tubulin-specific antiserum. Scale bar, 5 μ m.

livers are functional and fundamentally similar to bone marrow-derived cells.

We further cultured megakaryocyte colonies in methylcellulose and carefully picked, under microscopic observation, 2 classes: colonies clearly producing proplatelets and those of equal size and apparently equal cellular maturity but not producing proplatelets. The $\beta 1$ tubulin mRNA level in proplatelet-producing colonies was approximately 10-fold higher than in those without proplatelets (Figure 4B). This points to $\beta 1$ tubulin as a product of late megakaryocyte maturation, corresponding to the stage at which differentiation is arrested in the absence of NF-E2.

One characteristic feature of resting mammalian platelets is the presence of a prominent peripheral microtubule coil positioned along the long axis, called the marginal band.⁴⁵ Emerging evidence strongly suggests that the platelet marginal band is assembled

within developing proplatelets as an integral aspect of thrombopoiesis,⁴⁴ and Lewis et al³⁶ have shown the platelet marginal band to contain $\beta 1$ tubulin. We extended these findings to the realm of platelet biogenesis. A microtubule ring was consistently present at the termini of individual proplatelet filaments, and $\beta 1$ tubulin localized to this structure (Figure 4C, D), which was similar to the marginal band of blood-derived platelets (Figure 4E). This specific localization of $\beta 1$ tubulin to proplatelet shafts and platelet marginal bands immediately suggested a potential mechanism whereby this divergent and lineage-specific β tubulin isoform may participate in the assembly and release of blood platelets.

Expression of the $\beta 1$ tubulin gene is dependent on intact NF-E2 function

The dramatic reduction in $\beta 1$ tubulin mRNA levels in the absence of NF-E2 may reflect either direct transcriptional regulation by NF-E2 or simply the late differentiation block in NF-E2-null megakaryocytes. The mouse megakaryoblastic cell line L8057⁴⁶ shows complete lack of p45 NF-E2 protein (Figure 5A) and mRNA (data not shown), whereas expression of other megakaryocyte-associated transcription factors, including Tal-1,⁴⁷ is detected readily; these cells also fail to express $\beta 1$ tubulin. In transfected L8057 cells showing stable expression of p45 NF-E2, however, $\beta 1$ tubulin expression was restored (Figure 5A). Although the small-Maf (18 kd) component of the NF-E2 heterodimer was present in L8057 cells (data not shown), its availability might have been limiting for optimal formation of the functional transcription factor complex. Indeed, overexpression of p18/MafK in p45 NF-E2-expressing L8057 cells further increased the level of $\beta 1$ tubulin protein (Figure 5A). These studies in a megakaryocyte cell line suggest a critical requirement for NF-E2 in the expression of $\beta 1$ tubulin. Interestingly, a small fraction of NF-E2-expressing L8057 cells also went on to generate proplatelets in culture (K.S.W., R.A.S., unpublished data).

Mice lacking p45 NF-E2 show only mild red blood cell abnormalities.⁴⁸ If reduced $\beta 1$ tubulin in NF-E2 knockout mice simply reflects the late block in megakaryocyte differentiation, rather than direct transcriptional regulation, then $\beta 1$ tubulin mRNA levels would not be expected to be reduced in erythroid cells, in which a comparable differentiation arrest is not evident. Indeed, the known presence of $\beta 1$ tubulin within marginal microtubule bands in chicken erythrocytes^{49,50} raises the possibility that expression of

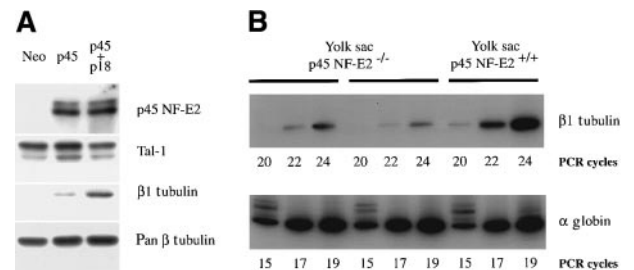


Figure 5. Dependence of $\beta 1$ tubulin expression on NF-E2. (A) NF-E2-dependent expression of $\beta 1$ tubulin in the megakaryocytic cell line L8057. Stable subclones that do not express p45 NF-E2 or express p45 NF-E2 alone or in combination with the small-Maf p18 subunit (designated as Neo, p45, or p45 + p18, respectively) have been generated. Expression of $\beta 1$ tubulin protein is absent in the parental or mock-transfected lines and is restored in p45-expressing subclones and, to a greater extent, in subclones that overexpress both p45 and p18 proteins. Immunoblots using a monoclonal antibody reactive against all β tubulin isoforms (pan β) or rabbit anti-Tal-1 serum are included as loading controls. Anti-p45 NF-E2 antibody reveals the absence of p45 protein in mock-transfected L8057 cells (Neo) (B) Semiquantitative RT-PCR analysis of $\beta 1$ tubulin mRNA levels in embryonic (primitive) erythrocytes purified from p45 NF-E2^{-/-} and control (wild-type) yolk sacs. Equal loading of RNA is confirmed by PCR for the red blood cell-specific α -globin transcript, and the numbers of PCR cycles are indicated.

this gene in 2 closely related blood cell lineages is regulated by the same transcription factor, NF-E2. β 1 tubulin is absent from adult mammalian erythrocytes, and the levels of mRNA and protein in normal embryonic, nucleated red blood cells are very low (data not shown). These low levels of β 1 tubulin mRNA in embryonic erythrocytes purified from yolk sacs are further reduced in cells from p45 null embryos compared with wild-type embryos (Figure 5B). This experiment, in which the possibility of yolk sac contamination by maternal platelets was carefully excluded, further supports a role for NF-E2 in transcriptional regulation of the β 1 tubulin gene.

In the absence of NF-E2, β 1 tubulin is not sufficient to restore proplatelet formation

Considered together, the above observations implicate β 1 tubulin as a specific and possibly essential component of the cellular machinery for platelet formation and release. To investigate the possibility that the absence of β 1 tubulin alone might account for profound thrombocytopenia in p45 NF-E2^{-/-} mice, we attempted to rescue the cellular phenotype of failure of proplatelet formation in vitro. Hematopoietic progenitors (Lin⁻ cells) from wild-type or p45 NF-E2^{-/-} fetal liver cells were induced to proliferate in the presence of TPO and the c-kit ligand, infected with retroviruses encoding p45 NF-E2 or β 1 tubulin, then cultured in TPO alone and monitored for proplatelet formation. Despite a predictably low (5%-10%) efficiency of retroviral transduction, as judged by immunofluorescence, this experimental design permitted analysis at the level of single cells in culture. Restoration of p45 NF-E2 expression in p45 NF-E2^{-/-} cells induced readily detectable proplatelets (Figure 6) in up to half of the p45 NF-E2-expressing cells, similar to the fraction of all mature megakaryocytes producing proplatelet in vitro.¹⁷ This result formally proves that the phenotype of p45 NF-E2 knockout megakaryocytes is a direct result of inactivation of the targeted gene rather than of inadvertent silencing of a neighboring gene locus, as has been observed in rare cases.⁵¹ Reintroduction of p45 NF-E2 also restored β 1 tubulin expression (Figure 6), underscoring the requirement for NF-E2 in the expression of the β 1 tubulin gene. In contrast, cells transduced with β 1 tubulin alone failed to produce proplatelets, despite detectable expression of the protein by immunofluorescence. p45 NF-E2^{+/+} cells infected with β 1 tubulin-encoding virus showed no compromise in the ability to produce proplatelets, thus excluding the possibility that the β 1 tubulin retrovirus is toxic to cells.

Among cDNAs isolated in the mRNA subtraction between wild-type and p45 NF-E2^{-/-} megakaryocytes, several others encode proteins with known or plausible roles in regulating both

the microtubule and the actin cytoskeletons, including pleckstrin and tropomyosin 4 (P.L., R.A.S., unpublished data). In contrast to β 1 tubulin, however, expression of these genes is neither lineage specific nor completely abolished in the absence of NF-E2, suggesting that megakaryocyte expression may be only partially or indirectly regulated by NF-E2. We conclude that β 1 tubulin is but one protein missing in NF-E2-deficient megakaryocytes.

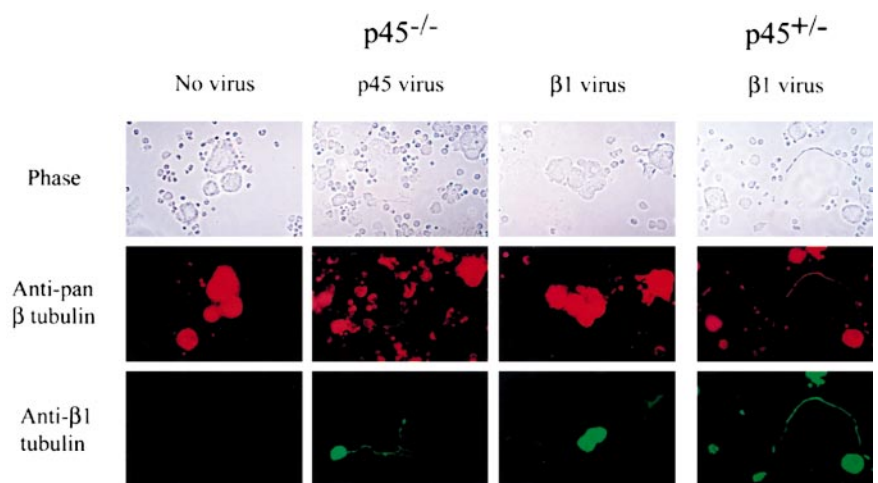
Discussion

Investigating the molecular mechanisms of platelet release

Cellular and molecular regulation of platelet release by terminally differentiated megakaryocytes remain poorly understood, in part because the rarity of megakaryocytes in vivo limits the identification of cells in the act of releasing platelets. Nevertheless, many independent studies have converged on a model of thrombopoiesis that recognizes that megakaryocyte differentiation culminates in the extension of long cytoplasmic processes, designated proplatelets.¹⁸ These structures are comprised of arrays of nascent blood platelets that fragment into particles with functional properties of circulating platelets.^{3,19,44} The internal membranes of mature megakaryocytes are believed to provide the lipid surface necessary to produce numerous proplatelets and blood platelets,⁵² and experimental evidence points to a central role for microtubules. Proplatelet ultrastructure reveals the presence of microtubule bundles in the shaft,^{3,19,53} proplatelet formation is disrupted by drugs that interfere with microtubule function,^{52,54,55} and the platelet marginal band is assembled by the coiling of microtubules within proplatelets.⁴⁴ Megakaryocytes from genetically thrombocytopenic mice lacking NF-E2 or GATA-1 function are defective in generating proplatelets in vitro,¹⁷ underscoring the correlation with thrombopoiesis in vivo.

To identify genes required for late megakaryocyte maturation and platelet release, we took advantage of the ability to culture large numbers of normal and p45 NF-E2^{-/-} megakaryocytes and generated a subtraction library highly enriched for transcripts that are reduced or absent in p45 NF-E2^{-/-} megakaryocytes. Among the differentially expressed transcripts, the gene encoding β 1 tubulin was particularly attractive for detailed study for several reasons. First, a β 1 tubulin cDNA fragment constitutes approximately 10% of the subtracted library, and β 1 tubulin mRNA is practically undetectable in megakaryocytes lacking NF-E2. Second, β 1 tubulin is a hematopoietic-specific isoform that shares

Figure 6. β 1 tubulin expression in p45 NF-E2^{-/-} megakaryocytes does not by itself induce the formation of proplatelets. Wild-type (right) or p45 NF-E2^{-/-} Lin⁻ cells (left) were infected with retroviruses encoding p45 NF-E2 or β 1 tubulin or were not infected as indicated on the top. After 3 days of culture, immunofluorescence was performed using β 1 tubulin-specific antiserum (bottom) or a monoclonal antibody reactive against all β tubulin isoforms (middle). Phase-contrast images of the same microscopic field are shown for each case.



much lower homology with the other β tubulins than is characteristic of this family,²⁰ suggesting the possibility that β 1 tubulin may have evolved to fulfill lineage-specific functions. Third, the absence of proplatelet formation in megakaryocytes lacking NF-E2¹⁷ suggests a highly plausible mechanism of NF-E2-dependent thrombopoiesis that invokes reorganization of the microtubule cytoskeleton.

Here we report that the absence of NF-E2 function is associated with a lack of β 1 tubulin as a result of transcriptional down-regulation, both in primary megakaryocytes and in a megakaryoblastic cell line. Coincident with the stage at which cell differentiation is arrested in the absence of NF-E2, β 1 tubulin mRNA and protein expression are observed almost exclusively in late megakaryocyte differentiation. Furthermore, the protein is largely localized to proplatelets, the critical intermediate structures missing from NF-E2-deficient megakaryocytes, and we suggest that the β 1 tubulin gene may be a direct transcriptional target of NF-E2. However, β 1 tubulin cDNA by itself is insufficient to rescue proplatelet formation by NF-E2-deficient megakaryocytes in vitro, suggesting that other transcriptional targets of NF-E2 are also required. These findings begin to identify the components of an NF-E2-regulated biochemical pathway of thrombopoiesis.

Role of β 1 tubulin in proplatelet formation and platelet release

Tubulins are core microtubule components that belong to 2 highly conserved protein families, α and β . Because isotypes within these families share considerable amino acid sequence identity (greater than 95%; β 1 tubulin is the most divergent, with 78% homology), it has been difficult to demonstrate specific functions for individual isoforms. Only the testis-specific β tubulin isotype in *Drosophila* is known to fulfill a specific and unique role⁵⁶; β 1 tubulin is predominantly incorporated into a microtubule structure called the marginal band, which functions to maintain platelet discoid shape,⁵⁷ and into microtubule bundles that traverse the length of proplatelet filaments in megakaryocytes (Figure 4). This cellular localization particularly suggests the possibility of a role for β 1 tubulin in the genesis and stability of mammalian blood platelets. In contrast to the usual rigidity of microtubules, the platelet marginal band is remarkably flexible and is composed of a single microtubule coiled tightly within a confined space.⁴⁵ Microtubules in maturing proplatelets likely also function as the conduit for rapid transport and compartmentalization of platelet organelles, another specialized function. One possibility is that the carboxyl terminus of β 1 tubulin, the region of maximum sequence diversity²⁰ and a putative mediator of protein-protein interactions,^{28,29} associates with other megakaryocyte-specific proteins involved in organelle transport and creation or stabilization of the marginal band. Despite these considerations, β tubulin is capable of assembling into functional mitotic spindles when expressed ectopically in HeLa cells.³⁶ This finding does not, however, preclude the possibility of additional cell-specific functions in megakaryocytes.

One is thus left with 2 broad possibilities: either β 1 tubulin fulfills important lineage-specific functions that account for its sequence divergence and its restricted pattern of expression, or β 1 tubulin evolved to fulfill the spatio-temporal demand for unusually high microtubule synthesis rather than to perform unique cellular functions. Notably, each of these possibilities is consistent with a dominant role for NF-E2, either as the transcriptional regulator of a

specific isoform or as a factor driving high levels of lineage- and stage-specific gene expression.

β 1 tubulin in an NF-E2-dependent pathway of thrombopoiesis

The absence of β 1 tubulin mRNA in p45 NF-E2-null megakaryocytes is compatible with 2 distinct modes of regulation. The β 1 tubulin gene could be a direct transcriptional target of NF-E2; alternatively, it may be regulated in a stage-specific manner that precludes expression in cells with arrested terminal differentiation. Either possibility places the β 1 tubulin gene within an NF-E2-dependent pathway of transcriptional regulation. Transduction of p45 NF-E2 into the mutant megakaryocytes induces β 1 tubulin expression (Figure 6), and expression of β 1 tubulin in a megakaryoblastic cell line is dependent on NF-E2 function (Figure 5A). Although the expression of β 1 tubulin is largely restricted to megakaryocytes and platelets, it has also been detected in primitive embryonic erythrocytes in mammals and in the nucleated mature erythrocytes of nonmammalian species.⁵⁸⁻⁶⁰ This expression pattern is remarkably concordant with that of p45 NF-E2, and β 1 tubulin mRNA levels are decreased in red cells isolated from p45 NF-E2^{-/-} yolk sacs (Figure 5B). Although the physiologic significance of this finding is uncertain because protein levels are low in this cell lineage, even in wild-type mice (data not shown), the result is informative with respect to the regulation of gene expression. Our initial characterization of genomic clones of murine β 1 tubulin indicates the absence of a canonical TATA box and the presence of 2 consensus NF-E2-binding sites in the 5' flanking region of the gene (P.L., R.A.S., unpublished data); experiments are in progress to determine the functional relevance of these sites in transcriptional regulation.

Perhaps not surprisingly, the expression of β 1 tubulin cDNA by itself is insufficient to restore proplatelet production in megakaryocytes that lack NF-E2 function (Figure 6). These cells are known to have at least one defect in addition to the failure of proplatelet formation, a paucity of platelet-specific granules,⁶ for which there is no obvious link to the absence of β 1 tubulin. In addition, the expression of at least one other megakaryocyte product, thromboxane synthase, appears to depend on NF-E2.^{61,62} The sum of the data thus points to NF-E2 as a critical regulator of a broad program of gene expression in terminally differentiated megakaryocytes. Among these genes, the lineage-specific β 1 tubulin is only one, though likely a critical, component.

Acknowledgments

We thank Sally Lewis and Nick Cowan for generously providing β 1 tubulin-specific antiserum and John Hartwig for support and insightful discussions. We thank Ezra Poister for superb technical assistance, Carmen Tam and Massimo Loda for help with immunohistochemistry, Hideki Sasaki for providing L8057 cells, Richard Baer for anti-Tal1 serum, Karen Kotkow for the p18 NF-E2 (MafK) plasmid construct, Paresh Vyas for use of a mouse megakaryocyte cDNA library to isolate full-length β 1 tubulin cDNA, and John Hartwig, Stuart Orkin, David Pellman, and Paresh Vyas for critical reviews of the manuscript.

References

- Jackson CW, Arnold JT, Pestina TI, Stenberg PE. Megakaryocyte biology. In: Kuter DJ, Hunt P, Sheridan W, Zucker-Franklin D, eds. Thrombopoiesis and Thrombopoietins. Totowa, NJ: Humana Press; 1997:4-39.
- Kaushansky K. Thrombopoietin: the primary regulator of platelet production. *Blood*. 1995;86:419-431.
- Choi ES, Nichol JL, Hokom MM, Hornkohl AC, Hunt P. Platelets generated in vitro from proplatelet-displaying human megakaryocytes are functional. *Blood*. 1995;85:402-413.
- Drachman JG, Sabath DF, Fox NE, Kaushansky K. Thrombopoietin signal transduction in purified murine megakaryocytes. *Blood*. 1997;89:483-492.

5. Lecine P, Blank V, Shivdasani R. Characterization of the hematopoietic transcription factor NF-E2 in primary murine megakaryocytes. *J Biol Chem*. 1998;273:7572-7578.
6. Shivdasani RA, Rosenblatt MF, Zucker-Franklin D, et al. Transcription factor NF-E2 is required for platelet formation independent of the actions of thrombopoietin/MGDF in megakaryocyte development. *Cell*. 1995;81:695-704.
7. Shivdasani RA, Fujiwara Y, McDevitt MA, Orkin SH. A lineage-selective knockout establishes the critical role of transcription factor GATA-1 in megakaryocyte growth and platelet development. *EMBO J*. 1997;16:3965-3973.
8. Tsang AP, Fujiwara Y, Hom DB, Orkin SH. Failure of megakaryopoiesis and arrested erythropoiesis in mice lacking the GATA-1 transcriptional cofactor FOG. *Genes Dev*. 1998;12:1176-1188.
9. Shavit JA, Motohashi H, Onodera K, Akasaka J, Yamamoto M, Engel JD. Impaired megakaryopoiesis and behavioral defects in mafG-null mutant mice. *Genes Dev*. 1998;12:2164-2174.
10. Mignotte V, Wall L, deBoer E, Grosveld F, Romeo P-H. Two tissue-specific factors bind the erythroid promoter of the human porphobilinogen deaminase gene. *Nucleic Acids Res*. 1989;17:37-54.
11. Ney PA, Sorrentino BP, Lowrey CH, Nienhuis AW. Inducibility of the HS II enhancer depends on binding of an erythroid specific nuclear protein. *Nucleic Acids Res*. 1990;18:6011-6017.
12. Talbot D, Grosveld F. The 5' HS 2 of the globin locus control region enhances transcription through the interaction of a multimeric complex binding at two functionally distinct NF-E2 binding sites. *EMBO J*. 1991;10:1391-1398.
13. Andrews NC, Erdjument-Bromage H, Davidson MB, Tempst P, Orkin SH. Erythroid transcription factor NF-E2 is a haematopoietic-specific basic-leucine zipper protein. *Nature*. 1993;362:722-728.
14. Ney PA, Andrews NC, Jane SM, et al. Purification of the human NF-E2 complex: cDNA cloning of the hematopoietic cell-specific subunit and evidence for an associated partner. *Mol Cell Biol*. 1993;13:5604-5612.
15. Andrews NC, Kotkow KJ, Ney PA, Erdjument-Bromage H, Tempst P, Orkin SH. The ubiquitous subunit of erythroid transcription factor NF-E2 is a small basic-leucine zipper protein related to the *v-maf* oncogene. *Proc Natl Acad Sci U S A*. 1993;90:11488-11492.
16. Igarashi K, Kataoka K, Itoh K, Hayashi N, Nishizawa M, Yamamoto M. Regulation of transcription by dimerization of erythroid factor NF-E2 p45 with small Maf proteins. *Nature*. 1994;367:568-572.
17. Lecine P, Villeval J-L, Vyas P, Swenick B, Xu Y, Shivdasani RA. Mice lacking transcription factor NF-E2 validate the proplatelet model of thrombocytopoiesis and show a platelet production defect that is intrinsic to megakaryocytes. *Blood*. 1998;92:1608-1616.
18. Becker RP, de Bruyn PP. The transmural passage of blood cells into myeloid sinusoids and the entry of platelets into the sinusoidal circulation: a scanning electron microscopic investigation. *Am J Anat*. 1976;145:183-205.
19. Radley JM, Scurfield G. The mechanism of platelet release. *Blood*. 1980;56:996-999.
20. Wang D, Villasante A, Lewis SA, Cowan NJ. The mammalian b-tubulin repertoire: hematopoietic expression of a novel b-tubulin isotype. *J Cell Biol*. 1986;103:1903-1910.
21. Sullivan KF. Structure and utilization of tubulin isotypes. *Annu Rev Cell Biol*. 1988;4:687-716.
22. Downing KH, Nogales E. Tubulin and microtubule structure. *Curr Opin Cell Biol*. 1998;10:16-22.
23. Inoue S, Salmon ED. Force generation by microtubule assembly/disassembly in mitosis and related movements. *Mol Biol Cell*. 1995;6:1619-1640.
24. Villasante A, Wang D, Dobner P, Dolph P, Lewis SA, Cowan NJ. Six mouse alpha-tubulin mRNAs encode five distinct isotypes: testis-specific expression of two sister genes. *Mol Cell Biol*. 1986;6:2409-2419.
25. Luduena RF. Are tubulin isotypes functionally significant. *Mol Biol Cell*. 1993;4:445-457.
26. Little M, Seehaus T. Comparative analysis of tubulin sequences. *Comp Biochem Physiol*. 1988;90:655-670.
27. Breittling F, Little M. Carboxy-terminal regions on the surface of tubulin and microtubules. *J Mol Biol*. 1986;189:367-370.
28. Mandelkow E, Mandelkow EM. Microtubules and microtubule-associated proteins. *Curr Opin Cell Biol*. 1995;7:72-81.
29. Nogales E, Wolf SG, Downing KH. Structure of the alpha beta tubulin dimer by electron crystallography. *Nature*. 1998;391:199-203.
30. Lewis SA, Lee MG, Cowan NJ. Five mouse tubulin isotypes and their regulated expression during development. *J Cell Biol*. 1985;101:852-861.
31. Raff EC. The role of multiple tubulin isoforms in cellular microtubule function. In: Hyams JS, Lloyd CW, eds. *Microtubules*. New York: Wiley-Liss; 1994:85-109.
32. Luduena RF. Multiple forms of tubulin: different gene products and covalent modifications. *Int Rev Cytol*. 1998;178:207-275.
33. Villeval J-L, Cohen-Solal K, Tulliez M, et al. High thrombopoietin production by hemopoietic cells induces a fatal myeloproliferative syndrome in mice. *Blood*. 1997;90:4369-4383.
34. Mizushima S, Nagata S. pEF-BOS, a powerful mammalian expression vector. *Nucleic Acids Res*. 1990;18:5322-5327.
35. Harlow E, Lane D. *Antibodies: A Laboratory Manual*. Cold Spring Harbor, NY: Cold Spring Harbor Press; 1988.
36. Lewis SA, Gu W, Cowan NJ. Free intermingling of mammalian b-tubulin isotypes among functionally distinct microtubules. *Cell*. 1987;49:539-548.
37. Ausubel FM, Brent R, Kingston RE, et al. *Current Protocols in Molecular Biology*. New York: John Wiley; 1987.
38. Johnson GR, Gonda TJ, Metcalf D, Hariharan IK, Cory S. A lethal myeloproliferative syndrome in mice transplanted with bone marrow cells infected with a retrovirus expressing granulocyte-macrophage colony stimulating factor. *EMBO J*. 1989;8:441-448.
39. Ory DS, Neugeboren BA, Mulligan RC. A stable human-derived packaging cell line for production of high titer retrovirus/vesicular stomatitis virus G pseudotypes. *Proc Natl Acad Sci U S A*. 1996;93:11400-11406.
40. Diatchenko L, Lau YF, Campbell AP, et al. Suppression subtractive hybridization: a method for generating differentially regulated or tissue-specific cDNA probes and libraries. *Proc Natl Acad Sci U S A*. 1996;93:6025-6030.
41. Diatchenko L, Lukyanov S, Lau YF, Siebert PD. Suppression subtractive hybridization: a versatile method for identifying differentially expressed genes. *Methods Enzymol*. 1999;303:349-380.
42. Cleveland DW, Pittenger MF, Feramisco JR. Elevation of tubulin levels by microinjection suppresses new tubulin synthesis. *Nature*. 1983;305:738-740.
43. Theodorakis NG, Cleveland DW. Physical evidence for cotranslational regulation of beta-tubulin mRNA degradation. *Mol Cell Biol*. 1992;12:791-799.
44. Italiano JE, Lecine P, Shivdasani RA, Hartwig JH. Blood platelets are assembled principally at the ends of proplatelet processes produced by differentiated megakaryocytes. *J Cell Biol*. 1999;147:1299-1312.
45. White JG, Krivit W. An ultrastructural basis for the shape changes induced in platelets by chilling. *Blood*. 1967;30:625-635.
46. Ishida Y, Levin J, Baker G, et al. Biological and biochemical characteristics of murine megakaryoblastic cell line L8057. *Exp Hematol*. 1993;21:289-298.
47. Mouthon M-A, Bernard O, Mitjavila M-T, Romeo P-H, Vainchenker W, Mathieu-Mahul D. Expression of tal-1 and GATA-binding proteins during human hematopoiesis. *Blood*. 1993;81:647-655.
48. Shivdasani RA, Orkin SH. Erythropoiesis and globin gene expression in mice lacking the transcription factor NF-E2. *Proc Natl Acad Sci U S A*. 1995;92:8690-8694.
49. Murphy DB, Wallis KT. Isolation of microtubule protein from chicken erythrocytes and determination of the critical concentration for tubulin polymerization in vitro and in vivo. *J Biol Chem*. 1983;258:8357-8364.
50. Murphy DB, Wallis KT, Machlin PS, Ratrie H, Cleveland DW. The sequence and expression of the divergent b-tubulin in chicken erythrocytes. *J Biol Chem*. 1987;262:14305-14312.
51. Olson EN, Arnold H-H, Rigby PWJ, Wold BJ. Know your neighbors: three phenotypes in null mutants of the myogenic bHLH gene MRF4. *Cell*. 1996;85:1-4.
52. Radley JM, Haller CJ. The demarcation membrane system of the megakaryocyte: a misnomer. *Blood*. 1982;60:213-219.
53. Cramer EM, Norol F, Guichard J, et al. Ultrastructure of platelet formation by human megakaryocytes cultured with the Mpl ligand. *Blood*. 1997;89:2336-2346.
54. Handagama PJ, Feldman BF, Jain NC, Farver TB, Kono CS. In vitro platelet release by rat megakaryocytes: effect of metabolic inhibitors and cytoskeletal disrupting agents. *Am J Vet Res*. 1987;48:1142-1146.
55. Tablin F, Castro M, Leven RM. Blood platelet formation in vitro: the role of the cytoskeleton in megakaryocyte fragmentation. *J Cell Sci*. 1990;97:59-70.
56. Hoyle HD, Raff EC. Two *Drosophila* beta tubulin isoforms are not functionally equivalent. *J Cell Biol*. 1990;111:1009-1026.
57. White JG, Rao GH. Microtubule coils versus the surface membrane cytoskeleton in maintenance and restoration of platelet discoid shape. *Am J Pathol*. 1998;152:597-609.
58. Murphy DB, Wallis KT. Erythrocyte microtubule assembly in vitro: tubulin oligomers limit the rate of microtubule self-assembly. *J Biol Chem*. 1986;261:2319-2324.
59. Murphy DB, Grasser WA, Wallis KT. Immunofluorescence examination of beta tubulin expression and marginal band formation in developing chicken erythroblasts. *J Cell Biol*. 1986;102:628-635.
60. Winckler B, Solomon F. A role for microtubule bundles in the morphogenesis of chicken erythrocytes. *Proc Natl Acad Sci U S A*. 1991;88:6033-6037.
61. Deveaux S, Cohen-Kaminsky S, Shivdasani RA, et al. p45 NF-E2 regulates the expression of thromboxane synthase in megakaryocytes. *EMBO J*. 1997;16:5654-5661.
62. Zhang L, Xiao H, Schultz RA, Shen RF. Genomic organization, chromosomal localization, and expression of the murine thromboxane synthase gene. *Genomics*. 1997;45:519-528.