

Insights Into the Pathogenicity of Rare Missense GCK Variants From the Identification and Functional Characterization of Compound Heterozygous and Double Mutations Inherited in *Cis*

NICOLA L. BEER, DPHIL^{1,2}
 KARA K. OSBAK, MSC¹
 MARTIJN VAN DE BUNT, MD¹
 NICHOLAS D. TRIBBLE, PHD¹
 ANNA M. STEELE, MSC³
 KIRSTY J. WENSLEY, PGCERT³
 EMMA L. EDGHILL, PHD³
 KEVIN COLCOUGH, BSC⁴

AMY BARRETT, BSC¹
 LUCIA VALENTINOVÁ, MSC^{1,5}
 JANA K. RUNDLE, PHD¹
 ANNE RAIMONDO, PHD¹
 JOSEPH GRIMSBY, PHD⁶
 SIAN ELLARD, PHD^{3,4}
 ANNA L. GLOYN, DPHIL^{1,7}

OBJECTIVE—To demonstrate the importance of using a combined genetic and functional approach to correctly interpret a genetic test for monogenic diabetes.

RESEARCH DESIGN AND METHODS—We identified three probands with a phenotype consistent with maturity-onset diabetes of the young (MODY) subtype GCK-MODY, in whom two potential pathogenic mutations were identified: [R43H/G68D], [E248 K/I225M], or [G261R/D217N]. Allele-specific PCR and cosegregation were used to determine phase. Single and double mutations were kinetically characterized.

RESULTS—The mutations occurred in *cis* (double mutants) in two probands and in *trans* in one proband. Functional studies of all double mutants revealed inactivating kinetics. The previously reported GCK-MODY mutations R43H and G68D were inherited from an affected father and unaffected mother, respectively. Both our functional and genetic studies support R43H as the cause of GCK-MODY and G68D as a neutral rare variant.

CONCLUSIONS—These data highlight the need for family/functional studies, even for previously reported pathogenic mutations.

Diabetes Care 35:1482–1484, 2012

A molecular diagnosis of monogenic diabetes is clinically important because there are implications for prognosis, treatment, and family members.

Consequently, the correct interpretation of a molecular genetic test is paramount, but novel variants continue to be poorly characterized (1–3). As the cost of DNA

From the ¹Oxford Centre for Diabetes, Endocrinology and Metabolism, University of Oxford, Oxford, U.K.; the ²Program in Medical and Population Genetics, Broad Institute of MIT and Harvard, Cambridge, Massachusetts; the ³Institute of Biomedical and Clinical Science, Peninsula Medical School, University of Exeter, Exeter, U.K.; the ⁴Molecular Genetics Department, Royal Devon and Exeter NHS Trust, Exeter, U.K.; the ⁵Institute of Experimental Endocrinology, Slovak Academy of Science, Bratislava, Slovakia; the ⁶Department of Metabolic Diseases, Hoffmann-La Roche Inc., Nutley, New Jersey; and ⁷Oxford National Institute for Health Research, Churchill Hospital, Oxford, U.K.

Corresponding author: Anna L. Gloyn, anna.gloyn@dr1.ox.ac.uk.

Received 13 December 2011 and accepted 9 March 2012.

DOI: 10.2337/dc11-2420

This article contains Supplementary Data online at <http://care.diabetesjournals.org/lookup/suppl/doi:10.2337/dc11-2420/-/DC1>.

N.L.B. and K.K.O. contributed equally to this study.

© 2012 by the American Diabetes Association. Readers may use this article as long as the work is properly cited, the use is educational and not for profit, and the work is not altered. See <http://creativecommons.org/licenses/by-nc-nd/3.0/> for details.

sequencing falls, one of the major barriers to genetic testing will be removed and the correct assignment of pathogenicity to novel variants will become more challenging.

Heterozygous inactivating mutations in glucokinase (GCK) cause a subtype of maturity-onset diabetes of the young (GCK-MODY) (4), which is characterized by stable, mild fasting hyperglycemia, whereas homozygous or compound heterozygous inactivating mutations result in the more severe clinical phenotype of permanent neonatal diabetes mellitus (PNDM) (4). The opposite clinical phenotype of hyperinsulinemic hypoglycemia (GCK-HH) ensues from heterozygous activating mutations (4). In the current study, we explored the pathogenicity of six missense GCK mutations that were identified in combination in three probands referred for GCK-MODY molecular genetic testing. Our aim was to use both molecular genetics and functional studies to ensure correct interpretation of the genetic tests.

RESEARCH DESIGN AND METHODS

Subjects studied

All probands were referred to the U.K. diagnostic screening center for GCK-MODY testing, with corresponding clinical details given in Fig. 1. All subjects gave informed consent.

GCK screening and mutation identification

The pancreatic β -cell isoform of GCK (accession number NM_000162.3) was sequenced using standard protocols. Mutation testing was undertaken in family members to establish cosegregation and phase. Where parental DNA was unavailable, molecular haplotyping using allele-specific PCR was used to determine phase (primer sequences available upon request).

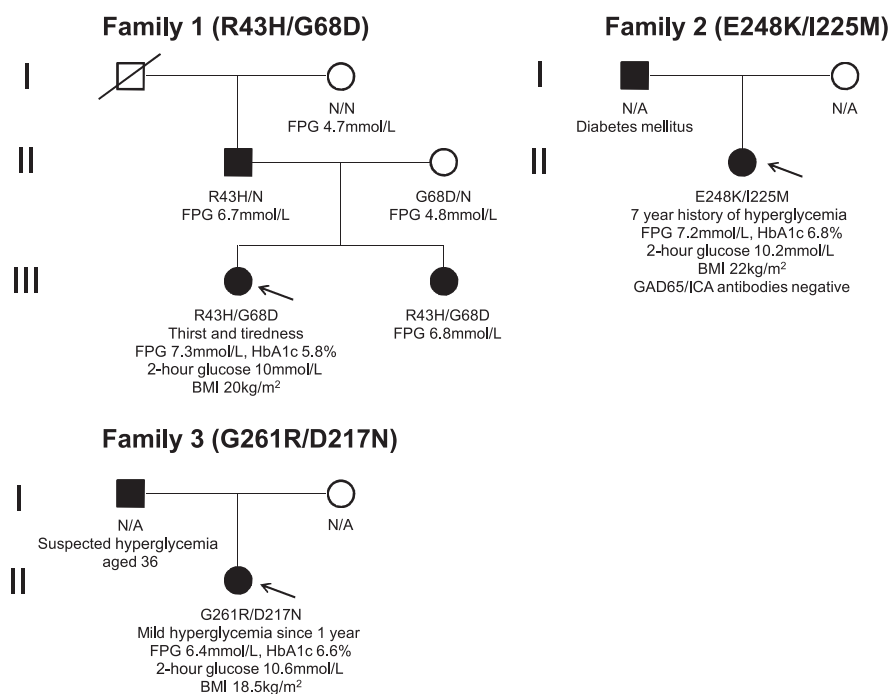


Figure 1—Pedigrees for the three probands. Squares and circles denote males and females, respectively. Filled symbols represent hyperglycemic individuals, and open symbols correspond to those with normoglycemia. Fasting plasma glucose values and mutation status for each family member are given underneath the appropriate symbol. An arrow indicates the proband in each family. N, no mutation; N/A, data not available.

Functional characterization of mutant proteins

Glutathione S-transferase–tagged human wild-type and mutant GCK were generated as described previously (5), as was FLAG-tagged human GCK regulatory protein (6). GCK activity was measured spectrophotometrically using glucose 6-phosphate dehydrogenase–coupled assays (5,7). Pharmacological GCK activator (RO0281675) stimulation, GCK regulatory protein–mediated inhibition (6,8), and thermolability assays (5,9) were also conducted to further probe mutational mechanisms. All statistical analyses were conducted using paired Student *t* tests.

RESULTS—GCK sequencing identified two nonsynonymous mutations in each of the three probands: R43H and G68D (c.128G>A, p.Arg43His and c.203G>A, p.Gly68Asp), E248K and I225M (c.742G>A, p.Glu248Lys and c.675C>G, p.Ile225Met), and G261R and D217N (c.781G>A, p.Gly261Arg and c.649G>A, p.Asp217Asn). Of these six mutations, five had been previously reported in GCK-MODY subjects (R43H, G68D, E248K, I225M, and G261R) but only the latter functionally characterized (4,10). All six

mutations were absent from 400 normal chromosomes and the October 2011 consensus calls of the 1000 Genomes Project (11). Bioinformatic (SIFT and PolyPhen) analysis only provided clear support for pathogenicity for G68D, I225M, and G261R.

Molecular haplotyping demonstrated that for two probands, the mutations were in *cis* ([E248K;I225M] and [G261R;D217N]). In contrast, family studies showed that the R43H and G68D mutations were on separate GCK alleles (Fig. 1). Since both mutations had previously been reported as causal for MODY, the proband would be expected to present with the more severe phenotype of PNDM. However, both the proband and her affected sister (who also inherited both mutations) only exhibited mild fasting hyperglycemia. Moreover, R43H was inherited from the affected father, whereas G68D came from the unaffected mother, thus suggesting that R43H was responsible for the GCK-MODY phenotype. In silico predictions (SIFT and PolyPhen) disagreed with these clinical observations and suggested that G68D was clearly pathogenic, while providing inconclusive results for R43H.

All six mutations were kinetically analyzed as single mutant proteins (Supplementary Table 1): three were inactivating, one (R43H-GCK) exhibited near normal kinetics, and two (G68D-GCK and D217N-GCK) were paradoxically mildly activating.

As basic kinetic analysis of R43H-GCK and G68D-GCK did not demonstrate a molecular mechanism consistent with the clinical data, we explored additional previously established modes of GCK inactivation (9,12). These studies provided evidence that R43H-GCK is unstable at the protein level versus wild-type GCK because R43H-GCK showed significantly lower levels of activity compared with wild type over a range of temperatures in a thermolability assay ($P < 0.05$) (Supplementary Fig. 1), providing a clear mechanism of enzyme inactivation. In contrast, our studies of G68D-GCK showed normal protein stability (Supplementary Fig. 1).

Both double mutants ([E248K;I225M] and [D217N;G261R]) displayed dramatic inactivation and were effectively nonfunctional with drastically reduced turnover numbers and affinity for glucose (Supplementary Table 1).

CONCLUSIONS—Despite heterozygous inactivating GCK mutations being a well-established cause of MODY, the three probands in this study were unusual because mutational screening revealed that they each carried two mutations within this gene, thus raising questions about the pathogenicity of these variants and the correct interpretation of the molecular genetic tests. For two of the three probands, both mutations were present in *cis*. We demonstrated that three (E248K, I225M, and G261R) of these four variants were kinetically inactivating and individually sufficient to cause GCK-MODY, whereas the novel D217N variant showed no evidence of inactivation but instead was paradoxically activating due to increased glucose affinity. However, when studied in combination with G261R, the joint effect of both mutations resulted in a severe impact on enzyme function. Despite the deleterious effect on GCK activity caused by carrying these mutations in *cis*, the mild clinical phenotype observed can be explained by compensation from GCK transcribed from the unaffected allele (13).

In contrast, the two previously reported GCK-MODY mutations R43H and G68D were present in *trans*, meaning the mild hyperglycemia observed could not easily

be explained because two inactivating mutations in *trans* should cause PNDM (4). Our family studies showed that R43H was inherited from the affected father and G68D from the unaffected mother, thus suggesting a pathogenic mutation and rare neutral variant, respectively. Consistent with these observations, our functional studies demonstrated that although R43H-GCK appeared to have similar basic kinetic characteristics to WT-GCK, there was *in vitro* evidence of protein instability, indicating that this variant is pathogenic. For G68D-GCK, there was no evidence of protein instability, and the very mild degree of kinetic activation was not predicted to cause hypoglycemia (Supplementary Table 1), supporting this as a rare neutral variant.

In conclusion, our study indicates that *in silico* evaluation is insufficient when assigning pathogenicity to rare nonsynonymous variants and demonstrates the need for both family and multi-tiered functional studies, even when dealing with previously reported “pathogenic” mutations.

Acknowledgments—This study was funded in Oxford by the Medical Research Council (81969), the National Institute for Health Research (NIHR) Biomedical Research Centre, Oxford, and the Wellcome Trust (095101/Z/10/Z). The research leading to these results has also received funding from the European Community's Seventh Framework Programme (FP7/2007-2013) under grant agreement 223211, CEED3.

J.G. is employed by Hoffmann-La Roche. S.E. is employed as a core member of staff within the NIHR-funded Peninsula Clinical Research Facility. A.L.G. is a Wellcome Trust Senior Fellow in Basic Biomedical Science. No other potential conflicts of interest relevant to this article were reported.

N.L.B. and K.K.O. collected, analyzed, and interpreted data and wrote the manuscript.

M.v.d.B. collected and analyzed data and critically reviewed the manuscript. N.D.T., E.L.E., K.C., A.B., L.V., J.K.R., and A.R. collected and analyzed data. A.M.S. and K.J.W. collected data. J.G. designed the study and critically reviewed the manuscript. S.E. conceived and designed the study and critically reviewed the manuscript. A.L.G. conceived and designed the study and wrote the manuscript. All authors approved the final version of the manuscript. A.L.G. is the guarantor of this work and, as such, had full access to all the data in the study and takes responsibility for the integrity of the data and the accuracy of the data analysis.

References

1. Odem J, Munzinger E, Violand S, Van Morlan A, Rife D, Bachrach B. An infant with combination gene mutations for monogenic diabetes of youth (MODY) 2 and 4, presenting with diabetes mellitus requiring insulin (DMRI) at 8 months of age. *Pediatr Diabetes* 2009;10:550–553
2. Looma-Albrecht LA, Jame M, Bremer AA. A novel glucokinase gene mutation and its effect on glycaemic/C-peptide fluctuations in a patient with maturity-onset diabetes of the young type 2. *Diabetes Res Clin Pract* 2010;87:e23–e25
3. Rubio-Cabezas O. Diagnosing monogenic diabetes: common misinterpretations of genetic findings. *Pediatr Diabetes* 2009;10:497–499
4. Osbak KK, Colclough K, Saint-Martin C, et al. Update on mutations in glucokinase (GCK), which cause maturity-onset diabetes of the young, permanent neonatal diabetes, and hyperinsulinemic hypoglycemia. *Hum Mutat* 2009;30:1512–1526
5. Davis EA, Cuesta-Muñoz A, Raoul M, et al. Mutants of glucokinase cause hypoglycaemia- and hyperglycaemia syndromes and their analysis illuminates fundamental quantitative concepts of glucose homeostasis. *Diabetologia* 1999;42:1175–1186
6. Beer NL, Tribble ND, McCulloch LJ, et al. The P446L variant in GCKR associated with fasting plasma glucose and triglyceride levels exerts its effect through increased glucokinase activity in liver. *Hum Mol Genet* 2009;18:4081–4088
7. Beer NL, van de Bunt M, Colclough K, et al. Discovery of a novel site regulating glucokinase activity following characterization of a new mutation causing hyperinsulinemic hypoglycemia in humans. *J Biol Chem* 2011;286:19118–19126
8. Grimsby J, Sarabu R, Corbett WL, et al. Allosteric activators of glucokinase: potential role in diabetes therapy. *Science* 2003;301:370–373
9. Kesavan P, Wang L, Davis E, et al. Structural instability of mutant beta-cell glucokinase: implications for the molecular pathogenesis of maturity-onset diabetes of the young (type-2). *Biochem J* 1997;322:57–63
10. Cuesta-Muñoz AL, Tuomi T, Cobo-Vuilleumier N, et al. Clinical heterogeneity in monogenic diabetes caused by mutations in the glucokinase gene (GCK-MODY). *Diabetes Care* 2010;33:290–292
11. Consortium TGP; 1000 Genomes Project Consortium. A map of human genome variation from population-scale sequencing. *Nature* 2010;467:1061–1073
12. Burke CV, Buettger CW, Davis EA, McClane SJ, Matschinsky FM, Raper SE. Cell-biological assessment of human glucokinase mutants causing maturity-onset diabetes of the young type 2 (MODY-2) or glucokinase-linked hyperinsulinemia (GK-HI). *Biochem J* 1999;342:345–352
13. Liang Y, Najafi H, Smith RM, et al. Concordant glucose induction of glucokinase, glucose usage, and glucose-stimulated insulin release in pancreatic islets maintained in organ culture. *Diabetes* 1992;41:792–806