

## Calcium/Calmodulin-Dependent Protein Kinase II and Its Endogenous Inhibitor $\alpha$ in Medullary Thyroid Cancer

Eleonora Russo<sup>1</sup>, Marcella Salzano<sup>1</sup>, Valentina De Falco<sup>1</sup>, Caterina Mian<sup>3</sup>, Susi Barollo<sup>3</sup>, Agnese Secondo<sup>2</sup>, Maurizio Bifulco<sup>4</sup>, and Mario Vitale<sup>4</sup>

### Abstract

**Purpose:** Calcium/calmodulin-dependent kinase II (CaMKII) is involved in the regulation of cell proliferation. Its endogenous inhibitor (hCaKIIN $\alpha$ ) is expressed in some cell types. We determined the role of CaMKII in *RET*-stimulated proliferation and hCaKIIN $\alpha$  in medullary thyroid carcinoma (MTC).

**Experimental Design:** We analyzed the role of *RET* mutants on CaMKII activation in NIH3T3 and in MTC cell lines, and determined the effect of CaMKII inhibition on *RET*/ERK pathway and cell proliferation. Then the expression of hCaKIIN $\alpha$  mRNA was determined by real-time PCR in primary MTC and it was correlated with some clinicopathologic parameters.

**Results:** *RET*<sup>C634Y</sup> and *RET*<sup>M918T</sup> mutants expressed in NIH3T3 cells induced CaMKII activation. CaMKII was activated in unstimulated MTC cells carrying the same *RET* mutants and it was inhibited by *RET* inhibition. Inhibition of CaMKII in these cells induced a reduction of Raf-1, MEK, and ERK phosphorylation, cyclin D expression, and cell proliferation. hCaKIIN $\alpha$  mRNA expression in primary MTC was very variable and did not correlate with gender and age at diagnosis. Serum calcitonin, ( $R^2 = 0.032$ ;  $P = 0.017$ ), tumor volume ( $P = 0.0079$ ), lymph node metastasis ( $P = 0.033$ ), and staging ( $P = 0.0652$ ) were negatively correlated with the hCaKIIN $\alpha$  mRNA expression.

**Conclusions:** CaMKII is activated by *RET* mutants and is activated at baseline in MTC cells where it mediates the oncogenic pathway leading to cell proliferation. The mRNA expression of its endogenous inhibitor hCaKIIN $\alpha$  inversely correlates with the severity of MTC. CaMKII might represent a new target for MTC therapy and hCaKIIN $\alpha$  is a marker of disease extension. *Clin Cancer Res*; 20(6); 1513–20. ©2014 AACR.

### Introduction

Medullary thyroid carcinoma (MTC) arises from calcitonin-producing parafollicular (C) cells of the thyroid and accounts for 5%–8% of all thyroid cancers (1). MTC is sporadic in about 75% of the cases; in the remaining cases, it is familial MTC (FMTC) or occurs as a component of the autosomal dominant familial multiple endocrine neoplasia type 2 (MEN2A and MEN2B). Point mutations of the *RET* gene (REarranged during Transfection) are present in about 40% of sporadic MTC and in more than 95% of MEN2 and FMTC. *RET* point mutations are described mainly in exons 10, 11, and 16, and less frequently in exons 5, 8, 13, 14, and 15 (2–4). In 95% of patients with MEN2B, *RET* is mutated at

codon 918 (Met918Thr; ref. 5). Multiple signals are generated by *RET*. Phosphorylation of tyrosine 1062 located in the *RET* carboxyl terminal tail is important for transforming activity of MEN2-mutant proteins (6). Tyr1062 acts as a docking site for many adaptor or effector proteins such as SHC, FRS2, DOK1/4/5/6, IRS1/2, Enigma, protein kinase C  $\alpha$  (PKC $\alpha$ ), and Shank (7). Among these, SHC binding plays a crucial role in activation of both the RAS/ERK and phosphoinositide 3-kinase (PI3)-K/AKT pathways (8). Phosphorylated tyrosine 1015 is docking site for phospholipase C  $\gamma$  (PLC $\gamma$ ; refs. 9, 10).

The calcium/calmodulin-dependent kinase II (CaMKII) is a ubiquitous serine/threonine protein kinase involved in multiple signals and biologic functions. In some cell types, CaMKII participates with Ras to Raf-1 activation, phosphorylating Raf-1 at S338, a phosphorylation necessary for ERK activation upon different physiologic and pathologic stimuli in the mitogen activated protein kinase (MAPK) cascade (11–13). The biologic function of CaMKII is cell type and cell context dependent. In neuronal cells, it is involved in regulating postsynaptic signaling complexes, neurotransmission and memory (14). In fibroblasts and myocytes, CaMKII modulates the insulin signaling (15, 16). In papillary thyroid carcinoma, CaMKII is activated by *BRaf*<sup>V600E</sup>, oncogenic *Ras*, and by *RET* rearrangements (*RET*/*PTC*) and participates in the activation of the ERK

**Authors' Affiliations:** <sup>1</sup>Dipartimento di Medicina Molecolare e Biotecnologie Mediche, Istituto di Endocrinologia e Oncologia Sperimentale del CNR Naples; <sup>2</sup>Department of Neuroscience, Reproductive and Odontostomatological Sciences, University of Naples "Federico II", Naples; <sup>3</sup>Department of Medicine-DIMED, Unit of Endocrinology, University of Padua, Padova; and <sup>4</sup>Department of Medicine and Surgery, University of Salerno, Salerno, Italy

**Corresponding Author:** Mario Vitale, Department of Medicine and Surgery, University of Salerno, Via Allende 84081, Baronissi, Salerno, Italy. Phone: 398-1746-4983; Fax: 398-1743-3668; E-mail: mavitale@unisa.it

doi: 10.1158/1078-0432.CCR-13-1683

©2014 American Association for Cancer Research.

### Translational Relevance

Medullary thyroid carcinoma (MTC) originates in the thyroid from the parafollicular C cells, frequently harboring point mutations of the *RET* gene. The calcium/calmodulin-dependent kinase II (CaMKII) is a ubiquitous kinase involved in the mitogen-activated protein kinase (MAPK) cascade activation, whereas its endogenous inhibitor hCaMKIIN $\alpha$  is a protein expressed in some tumor types. In this study, we demonstrate that CaMKII is necessary to *RET*-induced activation of the MAPK pathway and stimulated cell proliferation. We determined the level of mRNA expression of hCaMKIIN $\alpha$  and its correlation with clinicopathologic features in primary MTC, observing a strong inverse correlation between relative hCaMKIIN $\alpha$  expression levels and the disease extension. Our results assign to CaMKII and to its endogenous inhibitor an important role in MTC, suggesting that hCaMKIIN $\alpha$  might be used as a prognostic factor useful for tailoring the therapy of MTC, while CaMKII could represent a new therapeutic target for pharmacologic intervention in this cancer type.

pathway by oncogenic *Ras* and *RET/PTC*, thus modulating tumor cell proliferation (17). Two endogenous CaMKII inhibitory proteins (hCaMKIIN $\alpha$  and  $\beta$ ) have been identified in some cell types (18, 19). These proteins inhibit human colon adenocarcinoma cell growth and their expression is negatively correlated with the severity of human colon adenocarcinoma, suggesting a pivotal role of CaMKII in the development and progression of carcinomas. In our study, we investigated the role of CaMKII and its endogenous inhibitor hCaMKIIN $\alpha$  in MTC. We determined the ability of major *RET* mutants to activate CaMKII, the status of CaMKII activation in two MTC cell lines, the effect of CaMKII inhibition on *RET/ERK* signaling, and cell proliferation. Then, we determined the level of mRNA expression of hCaMKIIN $\alpha$  and its correlation with clinicopathologic features in primary MTC. Our results assign to CaMKII an important role in MTC.

### Materials and Methods

#### Cell cultures

Parental murine NIH3T3 fibroblasts and NIH3T3 cells stably transfected with the *RET* mutants *RET*<sup>C634R</sup> and *RET*<sup>M918T</sup> were cultured in Dulbecco's modified Eagle medium (DMEM) supplemented with 5% FBS. TT cells were from American Type Culture Collection. TT cells were derived from the primary tumor of sporadic MTC. TTs harbor a cysteine 634 to tryptophan exon 11 *RET* mutation (20) as well as a tandem duplication of the mutated *RET* allele (21). MZ-CRC1 cells were derived from a malignant pleural effusion from a patient with a metastatic MTC (22). MZ-CRC1 cells revealed a heterozygous (ATG to ACG) transition in *RET* exon 16 resulting in substitution of threonine 918 to methionine. TT cells

were grown in RPMI-1640 supplemented with 16% FBS (Gibco). MZ-CRC1 cells were grown in DMEM supplemented with 10% FBS. All media were supplemented with 2 mmol/L L-glutamine and 100 U/mL penicillin-streptomycin (Gibco). All cell lines were maintained at 37°C, 5%CO<sub>2</sub>.

#### [Ca<sup>2+</sup>]<sub>i</sub> measurement

[Ca<sup>2+</sup>]<sub>i</sub> was measured by Fura-2AM single-cell computer-assisted video imaging (23). The equation of Grynkiewicz and colleagues was used for calibration (24). Ca<sup>2+</sup> content into endoplasmatic reticulum was evaluated as cytosolic Ca<sup>2+</sup> release by using the irreversible and selective inhibitor of the sarco(endoplasmic)reticulum Ca<sup>2+</sup> ATPase (SERCA) thapsigargin (Tg) together with the purinergic receptor agonist ATP (100  $\mu$ mol/L) in a Ca<sup>2+</sup>-free solution containing EGTA (1 mmol/L). Tg was able to induce a progressive and complete ion depletion from ER, thus providing an indirect measure of Ca<sup>2+</sup> levels into the ER.

#### Western blot analysis

For Western blot analysis, cells were lysed in Laemmli buffer [0.125 mol/L Tris (pH 6.8), 5% glycerol, 2% SDS, 1%  $\beta$ -mercaptoethanol, and 0.006% bromophenol blue]. Proteins were resolved by 7%–15% SDS-PAGE and transferred to a nitrocellulose membrane (Immobilon P, Millipore Corp.). Membranes were blocked by 5% nonfat dry milk, 1% ovalbumin, 5% FCS, and 7.5% glycine in PBS, washed, and incubated for overnight at 4°C with primary antibodies and then washed again and incubated for 1 hour with a horseradish peroxidase-conjugated secondary antibody. Finally, protein bands were detected by an enhanced chemiluminescence system (Amersham Biosciences). Anti-phosphorylated p44/42 ERK (ERK1/2) were rabbit polyclonal antibodies from Cell Signaling Technology. Anti-RET was a rabbit polyclonal antibody raised against the tyrosine kinase protein fragment of human *RET* (25). Anti-phosphorylated Y905 recognizes *RET* proteins that are phosphorylated at Y905 (26). Blots were incubated with primary antibodies for 1 hour at room temperature, followed by three washes in buffer (20 mmol/L Tris-HCl at pH 7.5, 150 mmol/L NaCl, and 0.05% Tween 20). The blots were then incubated with the goat anti-rabbit secondary antibody coupled to horseradish peroxidase (Santa Cruz Biotechnology) for 1 hour at room temperature followed by three washes in buffer (20 mmol/L Tris-HCl at pH 7.5, 150 mmol/L NaCl, and 0.05% Tween 20). Monoclonal anti-phospho-CaMKII antibody (pT286-CaMKII) was from Cell Signaling Technology; anti-phospho Raf-1 S338 was from Biotechnology.

#### Reagents and inhibitors

The CaMK inhibitor KN93 and the CaM inhibitors N-(6-aminohexyl)-5-chloro-1-naphthalene-sulfonamide (W7) were purchased from Sigma Aldrich. The selective inhibition of *RET* ZD6474 (Vandetanib) was kindly provided by AstraZeneca. Ionomycin and BAPTA-AM were provided by Sigma.

## Patients and tumors

Tumor tissues were promptly dissected immediately after operation and then snap frozen and stored at  $-80^{\circ}\text{C}$ . MTCs were classified according to the American Joint Committee on Cancer (AJCC) TNM system. All patients gave consent to make their tumor tissue available for genetic analysis. The present study was approved by the Internal Reviewing Board. All MTCs were sporadic. The mean age at diagnosis was 54.9 years (range 37–81 years). Serum calcitonin concentrations were determined using an immunoradiometric assay in blood samples obtained 1 to 3 days before surgery.

## RNA extraction and relative mRNA quantification

Total RNA was extracted from TT and MZ-CRC1 cell lines using 500  $\mu\text{L}$  TRI Reagent, resuspended in 10  $\mu\text{L}$  DEPC water, and reverse-transcribed with SuperScript III (Invitrogen) in a 20  $\mu\text{L}$  reaction volume with random primers. mRNA was reverse-transcribed into cDNA and analyzed by real-time RT-PCR with the cDNA of the patients with MTC. Real-time PCR was performed using SYBR Green PCR reagents (Fermentas) and primers specific for hCaMKIIN $\alpha$  and  $\beta$ -actin. Forward and reverse primers for hCaMKIIN $\alpha$  were respectively: 5'-TACGGCGACGAGAAGCTGAG-3' and 5'-TCAGCACGTCATCAATCCTATC-3'. The  $\beta$ -actin forward and reverse primers were: 5'-TTCCCTTCCTGGGCATGGAGT-3' and 5'-TACAGGTCCTTTGCGGATGTC-3'. The samples were analyzed with Bio-Rad Cyclor with the following protocol:  $95^{\circ}\text{C} \times 5'$ ;  $95^{\circ}\text{C} \times 10''$ ;  $60''\text{C} \times 60''$  ( $\times 40$  cycles). The levels of relative mRNA expression were determined by normalizing to  $\beta$ -actin expression and adopting the  $\Delta\Delta\text{C}_t$  method (27).

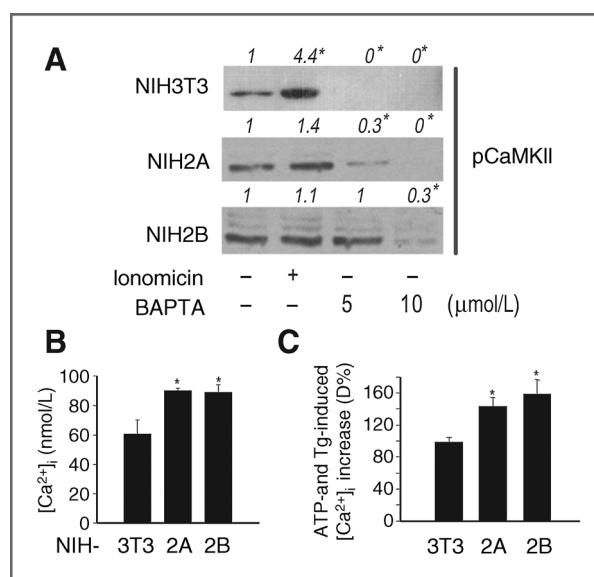
## Statistical analysis

Results are presented as the mean  $\pm$  SD. Statistical procedures included Student *t* test, ANOVA,  $\chi^2$  analysis, simple and rank correlation analysis, and logistic regression analysis. The *P* value was considered statistically significant when *P* < 0.05.

## Results

### RET mutants activate CaMKII by a $\text{Ca}^{2+}$ /calmodulin-mediated signal

Murine NIH3T3 fibroblast cells were transfected with an expression vector coding for the RET mutants C634R and M918T to generate stable cell mutants (NIH2A and NIH2B). To determine the CaMKII activation status in parental NIH3T3 and in cell mutants, serum-starved cells were treated with the calcium ionophore ionomycin and the phosphorylation of Thr 286 of CaMKII was evaluated by Western blot analysis (Fig. 1A). CaMKII phosphorylation was minimal in unstimulated parental NIH3T3 cells, and it was strongly induced by ionomycin. In untreated NIH2A and NIH2B cells, CaMKII phosphorylation was evident. The treatment with ionomycin had no effect, whereas the treatment with the calcium chelator BAPTA-AM decreased CaMKII phosphorylation in a dose-dependent manner. Accordingly, under resting conditions, intracellular  $\text{Ca}^{2+}$  concentrations ( $[\text{Ca}^{2+}]_i$ ) were higher in NIH2A and



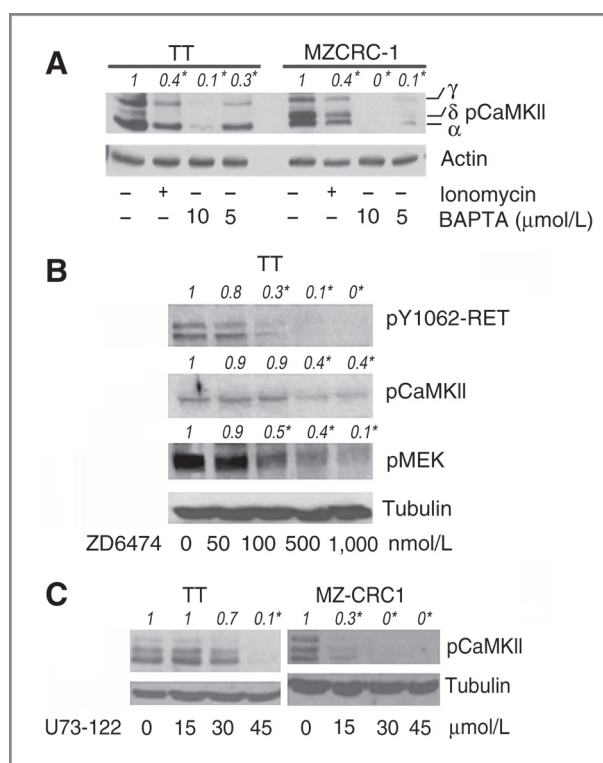
**Figure 1.** CaMKII is activated by RET mutants and in MTC cells harboring RET mutants. A, parental murine NIH3T3 fibroblasts and NIH3T3 cells stably transfected with the RET mutants *RET/C634R* (NIH2A) and *RET/M918T* (NIH2B) were starved from serum for 24 hours and then treated with the calcium ionophore ionomycin 2  $\mu\text{mol/L}$  for 5 minutes or with BAPTA-AM at the indicated concentration for 30 minutes. CaMKII phosphorylation at Thr 286 (pCaMKII) was evaluated by Western blot analysis. The 3 bands visible correspond to different CaMKII isoforms. Numbers in italic are averages of relative bands intensity, determined by scanning densitometry of three independent immunoblots. SDs were less than 10%. \*, *P* < 0.05 versus first point. B,  $[\text{Ca}^{2+}]_i$  recorded under basal conditions in NIH2A and NIH2B mutants and parental NIH3T3 cells. C, quantification of ATP- and Tg-induced effects on  $[\text{Ca}^{2+}]_i$  increase, calculated as  $\Delta\%$  of peak/basal value, in NIH2A and NIH2B mutants and parental NIH3T3 cells. For each experiment, 40 to 65 individual cells were monitored. Each bar represents the mean ( $\pm$  SEM) of the aforementioned experimental values studied in 3 independent experimental sessions; \*, *P* < 0.05 versus NIH3T3 cells.

NIH2B mutants than in parental NIH3T3 cells ( $90 \pm 2$  and  $89 \pm 5$  in NIH2A and NIH2B, respectively, versus  $60 \pm 9$  in NIH3T3 cells; \**P* < 0.05; Fig. 1B). Similarly, the intracellular  $\text{Ca}^{2+}$  content into the endoplasmic reticulum was higher in NIH2A and NIH2B mutants than in parental NIH3T3 ( $143\% \pm 11\%$  and  $149\% \pm 15\%$  in NIH2A and NIH2B, respectively, versus  $98\% \pm 5\%$  in NIH3T3 cells; \**P* < 0.05; Fig. 1C). These results demonstrate that CaMKII is activated by RET mutants in a calcium-dependent manner.

### CaMKII is activated in MTC cell lines

The MTC-derived cell lines TT and MZ-CRC1 contain a cysteine 634 to tryptophan (C634W) transversion at exon 11 of the *RET* gene with concurrent tandem duplication of the mutated *RET* allele, or a methionine 918 to threonine (M918T) transversion at exon 11 of the *RET* gene, respectively. Both cell lines were starved from serum for 24 hours and incubated in suspension with the calcium chelator BAPTA-AM or the ionophore ionomycin for 30 minutes at different concentrations. Cells were left in





**Figure 2.** CaMKII activation is *RET* and PLC $\gamma$  mediated in MTC cells. **A**, TT and MZ-CRC1 were starved from serum for 24 hours and incubated with BAPTA-AM at the indicated concentrations or 2  $\mu$ mol/L ionomycin for 30 minutes. Phosphorylation of CaMKII at Thr 286 was evaluated by Western blot analysis. **B**, TT cells starved from serum for 24 hours and incubated in suspension with increasing concentration of the *RET* inhibitor ZD6474. The proteins were resolved on SDS-PAGE, and the phosphorylation of Y1062-*RET*, CaMKII, and MEK were evaluated by Western blot analysis. **C**, TT and MZ-CRC1 cells were starved from serum for 24 hours and incubated for 2 hours with increasing concentration of the PLC $\gamma$  inhibitor U73-122 (15-30-45  $\mu$ mol/L). The cells were then lysed and CaMKII phosphorylation was evaluated by Western blot analysis. Numbers in italic are averages of relative bands intensity, determined by scanning densitometry of three independent immunoblots. SDs were less than 10%. \*,  $P < 0.05$  versus first point.

suspension to reduce the integrin signals, and CaMKII phosphorylation was evaluated by Western blot analysis. (Fig. 2A). Untreated cells exhibited a strong CaMKII phosphorylation. Ionomycin treatment produced a paradoxical effect reducing CaMKII phosphorylation. The calcium sensitivity of CaMKII was preserved as demonstrated by the dose-dependent inhibition induced by the calcium chelator BAPTA.

#### CaMKII activation is *RET* and PLC $\gamma$ mediated in MTC cell lines

To determine whether CaMKII activation was *RET* dependent in MTC cell lines, TT cells were starved from serum for 24 hours and incubated in suspension with increasing concentration of the *RET* inhibitor ZD6474 (Vandetanib) for 60 minutes. The cells were then lysed in radioimmunoprecipitation (RIPA) buffer, and the phos-

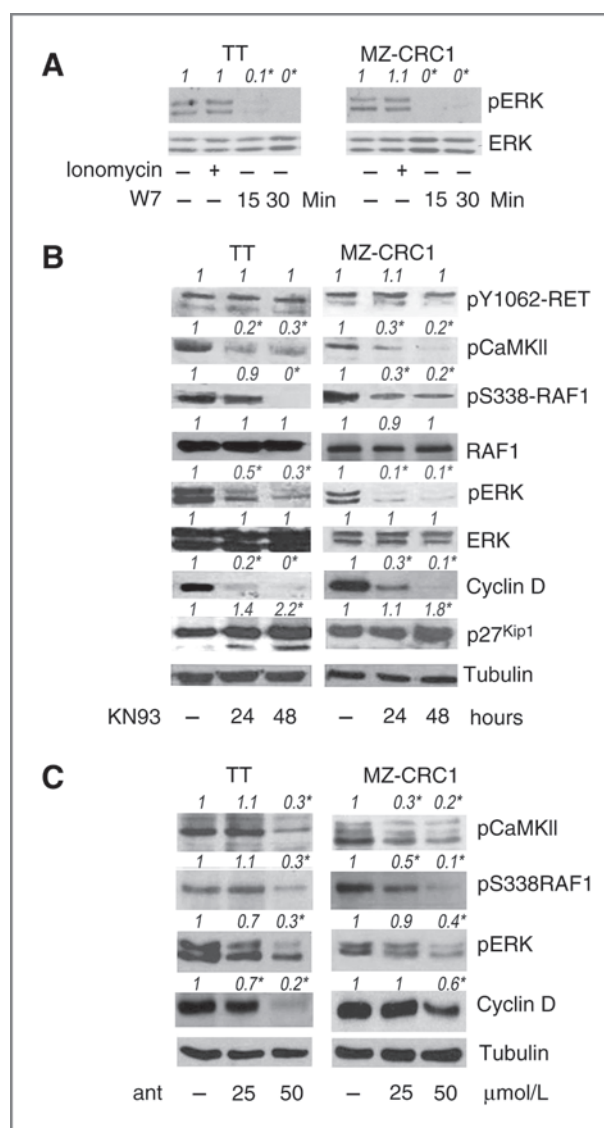
phorylation of *RET*-Y1062, CaMKII-T286, and MEK, were evaluated by Western blot analysis (Fig. 2B). Abrogation of *RET* phosphorylation by ZD6474 was accompanied by down-phosphorylation of CaMKII and MEK. Similar results were obtained in MZ-CRC1 cells (data not shown). PLC $\gamma$  is activated by *RET* and increases intracellular calcium concentration. To determine whether CaMKII activation by *RET* was PLC $\gamma$  mediated, serum-starved TT and MZ-CRC1 cells were treated in suspension with the PLC $\gamma$  inhibitor U73-122. CaMKII phosphorylation was determined by Western blot analysis (Fig. 2C). In MZ-CRC1 cells, 15  $\mu$ mol/L U73-122 was sufficient to induce a dramatic CaMKII dephosphorylation, whereas in TT cells, the same effect was obtained with 45  $\mu$ mol/L. The different result between the two cell lines evidences a major sensitivity of MZ-CRC1 cell line to calcium deprivation and confirm that in these cells CaMKII activation is *RET*/PLC $\gamma$ /calcium mediated.

#### ERK activation and cell cycle are CaMKII mediated in MTC cells

To determine the role of CaMKII in ERK activation, serum-starved TT and MZ-CRC1 cells were treated with ionomycin or the inhibitor of calmodulin W7 at different times and concentrations, and ERK phosphorylation was determined by Western blot analysis (Fig. 3A). ERK phosphorylation was evident in unstimulated cells and remained unchanged following ionomycin treatment. W7 displayed a powerful reproducible inhibitory effect of ERK phosphorylation, demonstrating that CaMKII activation in these cells is calmodulin dependent. The cells were starved from serum for 24 hours and incubated with the pharmacologic CaMKII inhibitor KN93 10  $\mu$ mol/L for 24 and 48 hours. Then, phosphorylation of *RET*-Y1062, CaMKII, S338-Raf1, ERK, total cyclin D, and p27<sup>Kip1</sup> were evaluated by Western blot analysis (Fig. 3B). KN93 was ineffective on *RET* phosphorylation, ensuring that the effects on the phosphorylation status of the other kinases was not a direct effect of KN93 on *RET*. A time-dependent inhibition of CaMKII phosphorylation confirmed the inhibitory effect of KN93. A substantial dephosphorylation of Raf1 at Ser338 and ERK occurred by 24 hours. A remarkable decrease of cyclin D expression was evident in both cell lines, with a time-dependent fashion. Accumulation of p27<sup>Kip1</sup>, more evident in TT cells, could also be observed. Phosphorylation of Raf-1 at Ser338 and ERK and cyclin D expression level were evaluated also upon CaMKII inhibition by the synthetic peptide antCaNtide (Fig. 3C). This peptide is derived from the endogenous hCaMKII inhibitor protein and was made cell permeable by N-terminal addition of an Antennapedia-derived sequence (28). CaMKII inhibition by antCaNtide confirmed the effects observed by KN93. These results demonstrate that ERK activation and the cell cycle are CaMKII mediated in MTC cells.

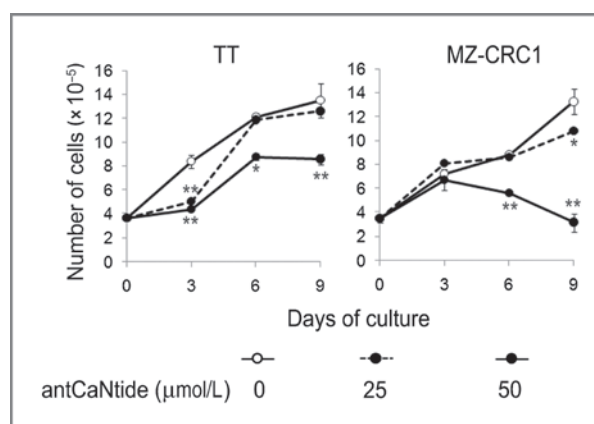
#### Effect of CaMKII inhibition on MTC cell proliferation

MTC cell lines were cultured in the presence of antCaNtide at different concentrations for up to 9 days. Every three



**Figure 3.** ERK activation and cell cycle are mediated by CaMKII in MTC cell lines. TT and MZ-CRC1 cells were serum starved for 24 hours and treated with the ionomycin for 30 minutes or with the calmodulin inhibitor W7 for 15 or 30 minutes (A). The cells were then lysed in RIPA buffer and ERK phosphorylation was evaluated by Western blot analysis. The cells were starved from serum for 24 hours and then treated with the CaMKII inhibitor KN93 (10 μmol/L) for 24 or 48 hours (B) or starved from serum for 24 hours and incubated with the CaMKII inhibitor antCaNtide (ant), 25 or 50 μmol/L (C). Phosphorylation of Y1026-RET, pCaMKII, S338-RAF1, and ERK, and total cyclin D and p27<sup>Kip1</sup> were evaluated by Western blot analysis. Numbers in italic are averages of relative bands intensity, determined by scanning densitometry of three independent immunoblots. SDs were less than 12%. \*,  $P < 0.05$  versus first point.

days, the medium and the inhibitor were renewed and the cell number was determined (Fig. 4). In TT cells, antCaNtide at both 25 and 50 μmol/L induced a significantly reduced number of cells respect to control after 3 days of treatment, then an effect was significant only with the higher concentration of inhibitor. Microscopic observation of the cells



**Figure 4.** Effects on cell proliferation of CaMKII inhibition. TT and MZ-CRC1 cells were plated at 500,000 cells per well in DMEM supplemented with 5% FBS. The number of attached cells was determined after overnight culture (day 0). Then, the cells were treated with the CaMKII inhibitor antCaNtide at different concentration (25 or 50 μmol/L) for up to 9 days. The medium and the inhibitor were renewed every 3 days. Cell number was determined by a Bio-Rad TC10 Automated Cell Counter. \*,  $P < 0.05$ ; \*\*,  $P < 0.001$ . Data, mean  $\pm$  SD from triplicate experiments.

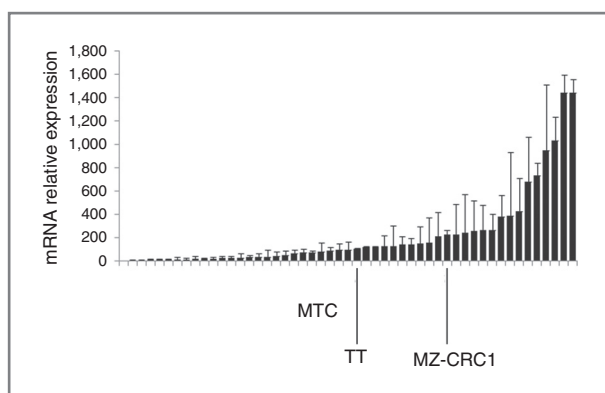
treated, revealed a considerable number of floating cells, and adherent round shaped cells already by 6 days of culture, indicating a toxic effect of the treatment. MZ-CRC1 exhibited a more resistant phenotype at lower peptide concentration. The number of MZ-CRC1 cells after 9 days of treatment with 50 μmol/L antCaNtide was 23% of the untreated cells.

#### hCaMKII $\alpha$ expression in primary MTC and MTC cell lines

The hCaMKII $\alpha$  mRNA relative expression was assessed by real-time PCR in 49 tissue samples of primary MTC, TT, and MZ-CRC1 cells. Relative mRNA expression level was determined as previously reported (27) and normalized to an internal standard ( $\beta$ -actin). hCaMKII $\alpha$  mRNA expression was remarkably variable (Fig. 5). hCaMKII $\alpha$  mRNA expression in MZ-CRC1 was about two-fold than in TT cells. These results pursued us to investigate about a possible correlation between hCaMKII $\alpha$  mRNA expression and clinicopathologic features in patients with MTC.

#### hCaMKII $\alpha$ expression and clinicopathologic characteristics of MTC

We determined the association between clinicopathologic characteristics of 49 MTC at surgery time and hCaMKII $\alpha$  mRNA expression. hCaMKII $\alpha$  mRNA expression inversely correlated with the serum calcitonin concentration ( $R^2 = 0.032$  in Spearman rank correlation,  $P = 0.017$ ; Fig. 6A). hCaMKII $\alpha$  mRNA expression was inversely correlated with the local tumor extension (T;  $F = 5.276$ ;  $P = 0.0079$  by ANOVA; Fig. 6B). Data also indicated a borderline significantly negative trend between hCaMKII $\alpha$  mRNA expression and tumor staging ( $F = 5.158$ ;  $P = 0.0652$  by ANOVA; Fig. 6D). Inverse correlation was also observed between hCaMKII $\alpha$  mRNA expression and lymph node metastasis



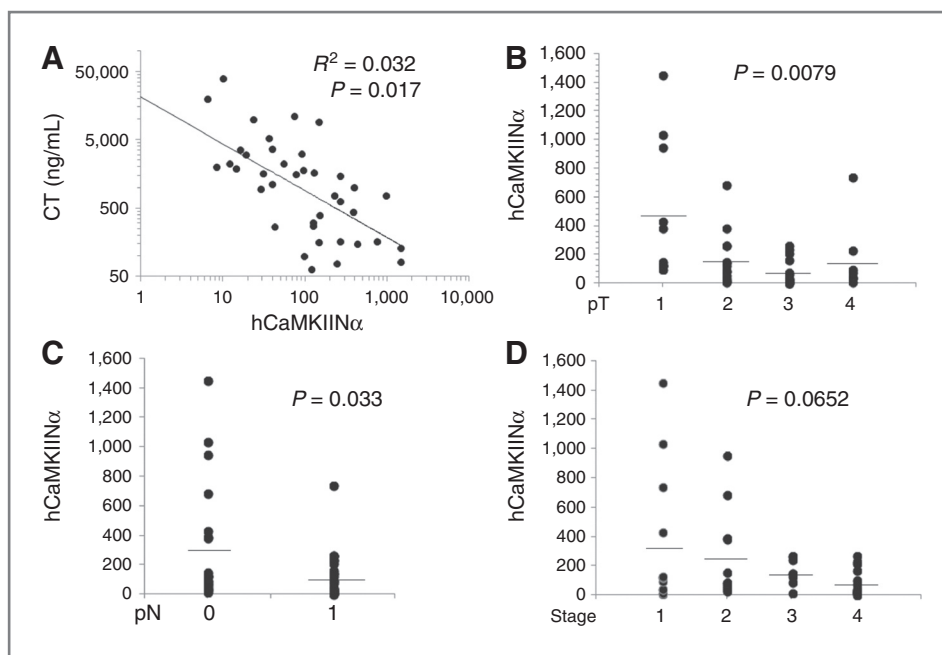
**Figure 5.** hCaMKIIN $\alpha$  expression in primary MTC and MTC cell lines. hCaMKIIN $\alpha$  mRNA relative expression was assessed by real time PCR in 49 tissue samples of primary MTC, TT, and MZ-CRC-1 cells. Relative mRNA expression level was normalized to  $\beta$ -actin and relative mRNA expression in each sample was calculated according to the  $2^{-\Delta\Delta CT}$  method (27). For each sample, the relative expression is reported as relative mRNA expression/lower relative mRNA expression. Data, mean  $\pm$  SDs of triplicates. MZ-CRC1 and TT cells are indicated.

at surgery time (Student *t* test,  $P = 0.033$ ; Fig. 6C). These results indicate that hCaMKIIN $\alpha$  expression is inversely correlated with a more aggressive disease at diagnosis, suggesting that inhibition of CaMKII by its endogenous inhibitor protects patients from a more aggressive MTC.

## Discussion

Previous studies demonstrated that *RET/PTC3* activates CaMKII through two pathways: Y1062/RAS/PLC $\gamma$ /Ca $^{2+}$ /CaMKII and Y1015/PLC $\gamma$ /Ca $^{2+}$ /CaMKII (17). This conclusion arises from the signaling analysis of *RET/PTC* mutants

in COS-7 cells and the observation that inhibition of *RET/PTC*-induced CaMKII activation is achieved by both RAS and PLC $\gamma$  inhibitors and by calcium chelators. Based upon these data, we hypothesized that *RET* mutants in MTC cells might activate CaMKII and participate in C-cell carcinogenesis. The NIH3T3 cells carrying the *RET* mutants C634W and M018T provided us with convincing evidence that oncogenic *RET* activates CaMKII through a calcium-mediated signal. In these cell mutants, CaMKII resulted in an active state of a magnitude comparable with that obtained by the calcium ionophore ionomycin and was inhibited by the calcium chelator BAPTA. However, although the NIH3T3 is a good cell model, suitable to study signal transduction pathways, the biologic role of CaMKII is cell type-dependent and results obtained in NIH3T3 need a direct experimental validation in MTC cells. Indeed, inhibition of CaMKII does not prevent cell proliferation in NIH3T3 and in some prostate cancer cells (unpublished personal observations), while it occurs in other cell types such as normal thyroid cells, thyroid cancer cells, or fibroblasts (15–17). Thus, the role of CaMKII in the MAPK pathway was studied in two MTC cell lines harboring C634W and M018T *RET* mutants. In both TT and MZ-CRC1 cell lines, CaMKII was in an active state also in the absence of extracellular stimuli. BAPTA, W7, and U73-122 abrogated the kinase phosphorylation, indicating that CaMKII in these cells was depended by a calcium/calmodulin/PLC $\gamma$ -mediated signaling. *RET* inhibition by ZD6474 demonstrated that CaMKII activation was induced by the *RET* mutants present in these cell lines. The effect of PLC $\gamma$  inhibitor U73-122 was more evident in MZ-CRC1 than in TT cells, suggesting some difference between the two *RET* mutants or the existence in TT cells of an additive factor modulating the intracellular calcium concentration. This result is not surprising, as there



**Figure 6.** hCaMKIIN $\alpha$  expression and clinicopathologic parameters in primary MTC. hCaMKIIN $\alpha$  mRNA relative expression was assessed by RT-PCR in 49 tissue samples of primary MTC and correlated with serum calcitonin (A), T classification of the pTNM system (B), lymph node metastasis (C), and tumor staging (D). The ordinates in B, C, and D report relative hCaMKIIN $\alpha$  mRNA expression. CT, calcitonin; Horizontal bars are averages.

are many factors that modulate the intracellular calcium concentration. Among these, there are the oncogenes *BRAF*<sup>V600E</sup> and *Ras*<sup>V12</sup> in papillary thyroid carcinomas (17). Like in other cell types investigated previously, also in MTC cells, active CaMKII phosphorylated RAF-1 at Ser 338, participating in the MAPK pathway, leading to cell proliferation (11, 13). Phosphorylation of Ser338 only potentiates RAF-1 activation, whereas full Raf-1 activation is achieved by concurrent S338 and Y341 (i.e., by Src) phosphorylation (29, 30). Accordingly, direct evidence in COS-7 cells demonstrated that expression of constitutively activated CaMKII-induced phosphorylation of Ser338 RAF-1, but induced neither RAF-1 nor ERK activation (13). The demonstration that RET-induced RAF-1, MEK and ERK phosphorylation, and cell proliferation requires CaMKII indicates the involvement of RAF-1 in MTC cells, while the effective role of BRAF remains unknown. The participation of RAF-1 to the proliferative signaling in MTC can be an important limitation in the therapy with BRAF inhibitors. Overall, these data indicate that CaMKII is a pivotal component of the RET signaling and is necessary for ERK activation induced by *RET* mutants in MTC cells.

As stated previously, CaMKII activation is a frequent occurrence in tumors, including colon adenocarcinoma, ovarian cancer, and many tumor cell lines, as many are the factors that modulate the intracellular calcium concentration. Among the different tumors we analyzed so far, CaMKII activation was demonstrated in all papillary thyroid carcinomas ( $n = 8$ ) and prostate cancer ( $n = 12$ ), regardless the presence of *RET/PTC*, BRAF or Ras mutations, by other concurring intracellular calcium-modulating signals (17). Similarly, if such calcium-modulating signals are present in MTC, they can potentiate or replace the RET-mutant signaling. Hence, CaMKII can be activated in MTC cells even in the absence of RET-activating mutations. A role for CaMKII in the regulation of cell cycle and cell proliferation in some tumors has emerged by studying its endogenous inhibitors. The endogenous inhibitors of CaMKII (CaMKIIN $\alpha$  and  $\beta$ ) were first identified from rat brain extracts, in Cos-7 cell line and in neurons. It has been hypothesized that CaMKIIN competes with the CaMKII region around T286 in an isoform-independent manner (31). The endogenous CaMKII inhibitor hCaMKIIN $\alpha$  induces accumulation of p27<sup>Kip1</sup>, ERK dephosphorylation, and cell-cycle arrest in colorectal carcinoma (19). hCaMKIIN $\alpha$  expression was negatively correlated with the severity of human colon adenocarcinoma, whereas hCaMKIIN $\beta$  expression was negatively correlated with the severity of ovarian adenocarcinoma (31). The analysis of hCaMKIIN $\alpha$  expression in primary MTC

revealed a broad variability. Notably, a strong inverse correlation between relative hCaMKIIN $\alpha$  expression levels and the disease extension in patients affected by MTC was observed. Although the sample number was relatively low, a highly significant inverse correlation was found between hCaMKIIN $\alpha$  mRNA expression in the tumors and the serum calcitonin levels and tumor dimension. A less evident inverse correlation was found between hCaMKIIN $\alpha$  mRNA expression and lymph node metastasis and staging. All these findings strongly indicate that hCaMKIIN $\alpha$  counteracts the aggressive clinical behavior of MTC, while suggesting that attenuation of CaMKII activity is correlated with a less aggressive tumor. A direct evidence of the endogenous CaMKII activity in the tumors studied could only be hypothesized on the basis of the expression of its inhibitor. However, until other functions will be assigned to hCaMKIIN $\alpha$ , its CaMKII inhibitory effect is the mechanism that can explain its negative correlation with tumor extension. These results suggest that hCaMKIIN $\alpha$  might be used as a prognostic factor useful for tailoring the therapy of MTC. As a final consideration, CaMKII could represent a new therapeutic target for pharmacologic intervention in this cancer type.

#### Disclosure of Potential Conflicts of Interest

No potential conflicts of interest were disclosed.

#### Authors' Contributions

**Conception and design:** M. Salzano, M. Vitale

**Development of methodology:** E. Russo, M. Salzano, V. De Falco, S. Barollo

**Acquisition of data (provided animals, acquired and managed patients, provided facilities, etc.):** E. Russo, M. Salzano, C. Mian, A. Secondo  
**Analysis and interpretation of data (e.g., statistical analysis, biostatistics, computational analysis):** E. Russo, M. Salzano, A. Secondo, M. Vitale

**Writing, review, and/or revision of the manuscript:** V. De Falco, M. Vitale  
**Administrative, technical, or material support (i.e., reporting or organizing data, constructing databases):** E. Russo, C. Mian, M. Vitale  
**Study supervision:** V. De Falco, M. Bifulco, M. Vitale

#### Acknowledgments

The authors thank Prof. Massimo Santoro for his critical reading of the manuscript, and Dr. Valeria Ursini and Maria Teresa Paciolla for their technical support.

#### Grant Support

This study was partly supported by Ministero Italiano della Università della Ricerca (to M. Vitale)

The costs of publication of this article were defrayed in part by the payment of page charges. This article must therefore be hereby marked *advertisement* in accordance with 18 U.S.C. Section 1734 solely to indicate this fact.

Received June 19, 2013; revised November 25, 2013; accepted December 22, 2013; published OnlineFirst January 21, 2014.

#### References

- Gardner E, Papi L, Easton DF, Cummings T, Jackson CE, Kaplan M, et al. Genetic linkage studies map the multiple endocrine neoplasia type 2 loci to a small interval on chromosome 10q11.2. *Hum Mol Genet* 1993;2:241-6.
- Marsh DJ, Learoyd DL, Andrew SD, Krishnan L, Pojer R, Richardson AL, et al. Somatic mutations in the RET proto-oncogene in sporadic medullary thyroid carcinoma. *Clin Endocrinol* 1996;44:249-57.
- Donis-Keller H, Dou S, Chi D, Carlson KM, Toshima K, Lairmore TC, et al. Mutations in the RET proto-oncogene are associated with MEN 2A and FMTC. *Hum Mol Genet* 1993;2:851-6.
- Eng C, Clayton D, Schuffenecker I, Lenoir G, Cote G, Gagel RF, et al. The relationship between specific RET proto-oncogene mutations and disease phenotype in multiple endocrine neoplasia type 2. International RET mutation consortium analysis. *JAMA* 1996;276:1575-9.



5. Myers SM, Eng C, Ponder BA, Mulligan LM. Characterization of RET proto-oncogene 3' splicing variants and polyadenylation sites: a novel C-terminus for RET. *Oncogene* 1995;11:2039-45.
6. Asai N, Murakami H, Iwashita T, Takahashi M. A mutation at tyrosine 1062 in MEN2A-Ret and MEN2B-Ret impairs their transforming activity and association with shc adaptor proteins. *J Biol Chem* 1996;271:17644-9.
7. Schuetz G, Rosario M, Grimm J, Boeckers TM, Gundelfinger ED, Birchmeier W. The neuronal scaffold protein Shank3 mediates signaling and biological function of the receptor tyrosine kinase Ret in epithelial cells. *J Cell Biol* 2004;167:945-52.
8. Besset V, Scott RP, Ibanez CF. Signaling complexes and protein-protein interactions involved in the activation of the Ras and phosphatidylinositol 3-kinase pathways by the c-Ret receptor tyrosine kinase. *J Biol Chem* 2000;275:39159-66.
9. Arighi E, Borrello MG, Sariola H. RET tyrosine kinase signaling in development and cancer. *Cytokine Growth Factor Rev* 2005;16:441-67.
10. Salvatore D, Barone MV, Salvatore G, Melillo RM, Chiappetta G, Mineo A, et al. Tyrosines 1015 and 1062 are in vivo autophosphorylation sites in ret and ret-derived oncoproteins. *J Clin Endocrinol Metab* 2000;85:3898-907.
11. Illario M, Cavallo AL, Bayer KU, Di Matola T, Fenzi G, Rossi G, et al. Calcium/calmodulin-dependent protein kinase II binds to Raf-1 and modulates integrin-stimulated ERK activation. *J Biol Chem* 2003;278:45101-8.
12. Illario M, Amideo V, Casamassima A, Andreucci M, di Matola T, Miele C, et al. Integrin-dependent cell growth and survival are mediated by different signals in thyroid cells. *J Clin Endocrinol Metab* 2003;88:260-9.
13. Salzano M, Rusciano MR, Russo E, Bifulco M, Postiglione L, Vitale M. Calcium/calmodulin-dependent protein kinase II (CaMKII) phosphorylates Raf-1 at serine 338 and mediates Ras-stimulated Raf-1 activation. *Cell Cycle* 2012;11:2100-6.
14. Hudmon A, Schulman H. Neuronal CA2+/calmodulin-dependent protein kinase II: the role of structure and autoregulation in cellular function. *Annu Rev Biochem* 2002;71:473-510.
15. Monaco S, Illario M, Rusciano MR, Gragnaniello G, Di Spigna G, Leggiero E, et al. Insulin stimulates fibroblast proliferation through calcium-calmodulin-dependent kinase II. *Cell Cycle* 2009;8:2024-30.
16. Illario M, Monaco S, Cavallo AL, Esposito I, Formisano P, D'Andrea L, et al. Calcium-calmodulin-dependent kinase II (CaMKII) mediates insulin-stimulated proliferation and glucose uptake. *Cell Signal* 2009;21:786-92.
17. Rusciano MR, Salzano M, Monaco S, Sapio MR, Illario M, De Falco V, et al. The Ca2+-calmodulin-dependent kinase II is activated in papillary thyroid carcinoma (PTC) and mediates cell proliferation stimulated by RET/PTC. *Endocr Relat Cancer* 2010;17:113-23.
18. Zhang J, Li N, Yu J, Zhang W, Cao X. Molecular cloning and characterization of a novel calcium/calmodulin-dependent protein kinase II inhibitor from human dendritic cells. *Biochem Biophys Res Commun* 2001;285:229-34.
19. Wang C, Li N, Liu X, Zheng Y, Cao X. A novel endogenous human CaMKII inhibitory protein suppresses tumor growth by inducing cell cycle arrest via p27 stabilization. *J Biol Chem* 2008;283:11565-74.
20. Carlomagno F, Salvatore D, Santoro M, de Franciscis V, Quadro L, Panariello L, et al. Point mutation of the RET proto-oncogene in the TT human medullary thyroid carcinoma cell line. *Biochem Biophys Res Commun* 1995;207:1022-8.
21. Huang SC, Torres-Cruz J, Pack SD, Koch CA, Vortmeyer AO, Mannan P, et al. Amplification and overexpression of mutant RET in multiple endocrine neoplasia type 2-associated medullary thyroid carcinoma. *J Clin Endocrinol Metab* 2003;88:459-63.
22. Cooley LD, Elder FF, Knuth A, Gagel RF. Cytogenetic characterization of three human and three rat medullary thyroid carcinoma cell lines. *Cancer Genet Cytogenet* 1995;80:138-49.
23. Secondo A, Staiano RI, Scorziello A, Sirabella R, Boscia F, Adometto A, et al. BHK cells transfected with NCX3 are more resistant to hypoxia followed by reoxygenation than those transfected with NCX1 and NCX2: Possible relationship with mitochondrial membrane potential. *Cell Calcium* 2007;42:521-35.
24. Gryniewicz G, Poenie M, Tsien RY. A new generation of Ca2+ indicators with greatly improved fluorescence properties. *J Biol Chem* 1985;260:3440-50.
25. Santoro M, Carlomagno F, Romano A, Bottaro DP, Dathan NA, Grieco M, et al. Activation of RET as a dominant transforming gene by germline mutations of MEN2A and MEN2B. *Science* 1995;267:381-3.
26. Carlomagno F, Vitagliano D, Guida T, Basolo F, Castellone MD, Melillo RM, et al. Efficient inhibition of RET/papillary thyroid carcinoma oncogenic kinases by 4-amino-5-(4-chloro-phenyl)-7-(t-butyl)pyrazolo[3,4-d]pyrimidine (PP2). *J Clin Endocrinol Metab* 2003;88:1897-902.
27. Livak KJ, Schmittgen TD. Analysis of relative gene expression data using real-time quantitative PCR and the 2(-Delta Delta C(T)) Method. *Methods* 2001;25:402-8.
28. Chang BH, Mukherji S, Soderling TR. Characterization of a calmodulin kinase II inhibitor protein in brain. *Proc Natl Acad Sci U S A* 1998;95:10890-5.
29. Marais R, Light Y, Paterson HF, Marshall CJ. Ras recruits Raf-1 to the plasma membrane for activation by tyrosine phosphorylation. *EMBO J* 1995;14:3136-45.
30. Marais R, Light Y, Paterson HF, Mason CS, Marshall CJ. Differential regulation of Raf-1, A-Raf, and B-Raf by oncogenic ras and tyrosine kinases. *J Biol Chem* 1997;272:4378-83.
31. Ma S, Yang Y, Wang C, Hui N, Gu L, Zhong H, et al. Endogenous human CaMKII inhibitory protein suppresses tumor growth by inducing cell cycle arrest and apoptosis through down-regulation of the phosphatidylinositol 3-kinase/Akt/HDM2 pathway. *J Biol Chem* 2009;284:24773-82.