

# Metformin Use and Risk of Colorectal Adenoma after Polypectomy in Patients with Type 2 Diabetes Mellitus

Amy R. Marks<sup>1</sup>, Ralph A. Pietrofesa<sup>2,3</sup>, Christopher D. Jensen<sup>1</sup>, Alexis Zebrowski<sup>2</sup>, Douglas A. Corley<sup>1</sup>, and Chyke A. Doubeni<sup>2</sup>

## Abstract

**Background:** Existing literature suggests that metformin, the most commonly used biguanide, may lower colorectal cancer risk. Because most colorectal cancers originate in precancerous adenomas, we examined whether metformin use lowered colorectal adenoma risk after polypectomy in patients with type-2 diabetes.

**Methods:** Retrospective cohort study of 40- to 89-year-old Kaiser Permanente Northern California patients who had type 2 diabetes, and  $\geq 1$  adenoma detected at baseline colonoscopy during 2000 to 2009 and a repeat colonoscopy 1 to 10 years from baseline adenoma diagnosis through 2012. Cox models evaluated the association between metformin use during follow-up and subsequent adenoma diagnoses, controlling for age, race/ethnicity, sex, body mass index, and repeat examination indication.

**Results:** Study included 2,412 patients followed for a median of 4.5 years; cumulatively, 1,117 (46%) patients had  $\geq 1$  adenoma at repeat colonoscopy. Compared with patients not receiving

diabetes medications ( $n = 1,578$ ), metformin-only use ( $n = 457$ ) was associated with lower adenoma recurrence risk [adjusted HR, 0.76; 95% confidence interval (CI), 0.65–0.89], and the association was stronger with increasing total metformin dose [quartile (Q) 1: HR, 0.90; 95% CI, 0.72–1.12; Q2: HR, 0.89; 95% CI, 0.70–1.12; Q3: HR, 0.80; 95% CI, 0.63–1.01; Q4: HR, 0.50; 95% CI, 0.42–0.60,  $P_{\text{trend}} < 0.001$ ]. Findings were unchanged in sensitivity analyses, including evaluating only outcomes during the 3- to 10-year period from baseline.

**Conclusion:** Our study suggests a potential benefit of metformin use in lowering the risk of subsequent adenomas after polypectomy in patients with type 2 diabetes.

**Impact:** Metformin may lower colorectal cancer risk by reducing the formation of precancerous lesions, reinforcing the potential additional benefits of its use. *Cancer Epidemiol Biomarkers Prev*; 24(11); 1692–8. ©2015 AACR.

## Introduction

Colorectal cancer is the second leading cause of cancer-related death in the United States (1), with most originating as precancerous adenomas (2). Many patients in whom colorectal adenomas have been removed develop subsequent lesions (3–5). In the United States, based on Clinical Outcomes Research Initiative data, surveillance procedures aimed at detecting such new or recurrent lesions account for about 22% of all colonoscopies among persons 50 years and older, and is the most common reason for colonoscopy among those 75 years and older (6, 7). Thus, therapies that reduce adenoma recurrence may reduce both colorectal cancer risk and the need for surveillance colonoscopy.

Previous studies have found that commonly used medications, such as aspirin and celecoxib, may reduce adenoma and colorectal cancer risk (8–11), but there is a paucity of published studies evaluating metformin's effect and its potential chemopreventive role. Metformin is the most commonly prescribed drug for the prevention or treatment of type 2 diabetes mellitus and associated conditions (12). Studies show that a diagnosis of diabetes is associated with an increased risk of diagnosis with colorectal adenomas and adenocarcinoma (13, 14). A number of studies have suggested that metformin may reduce colorectal cancer risk (15–18), but others have found no association (19, 20). However, there is limited literature on metformin use and colorectal adenoma risk (21), and no prior studies have examined whether metformin reduces the risk of adenoma formation after polypectomy. In this study, we examined the relationship between metformin use and detection of new or recurrent adenomas at follow-up examination after polypectomy in patients with type 2 diabetes.

## Materials and Methods

### Study design and setting

This is a retrospective cohort study of patients receiving care in Kaiser Permanente Northern California (KPNC), an integrated healthcare delivery organization serving approximately 3.3 million people in urban, suburban, and semirural regions within a large geographic area. The integrated structure allows access to stable enrolled populations for longitudinal studies. The study

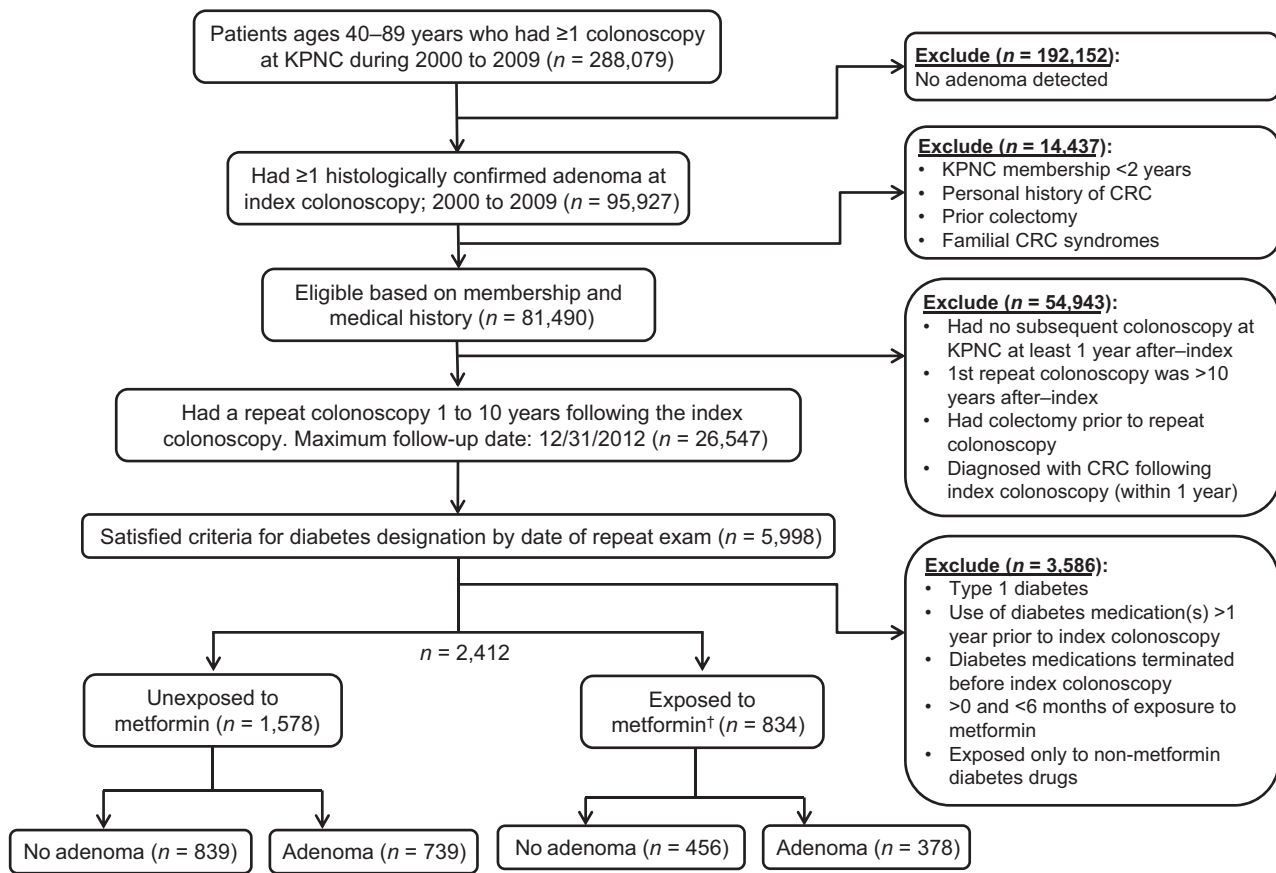
<sup>1</sup>Division of Research, Kaiser Permanente Northern California, Oakland, California. <sup>2</sup>Department of Family Medicine and Community Health, University of Pennsylvania Perelman School of Medicine, Philadelphia, Pennsylvania. <sup>3</sup>Center for Public Health Initiatives, University of Pennsylvania, Philadelphia, Pennsylvania.

**Note:** Supplementary data for this article are available at Cancer Epidemiology, Biomarkers & Prevention Online (<http://cebp.aacrjournals.org/>).

**Corresponding Author:** Chyke A. Doubeni, University of Pennsylvania Perelman School of Medicine, 3400 Spruce Street, Gates 2, Philadelphia, PA 19104. Phone: 267-567-3876; Fax: 215-662-3591; E-mail: Chyke.Doubeni@uphs.upenn.edu

doi: 10.1158/1055-9965.EPI-15-0559

©2015 American Association for Cancer Research.



†Exposure to metformin, as shown, was defined as use of metformin during the follow-up period including in combination with other diabetes medications.

**Figure 1.**

Flow diagram of study participant selection. Representative flow chart of the study design and selection of patients for inclusion in the study.

was approved by the Institutional Review Boards of KPNC and the University of Pennsylvania.

### Population

The study cohort was comprised of patients with type 2 diabetes who were 40 to 89 years old at the time they underwent a colonoscopy between January 1, 2000, and December 31, 2009, in which  $\geq 1$  histologically confirmed colorectal adenomas were found and removed. Patients were followed from the index examination date to the date of a follow-up colonoscopy on or before December 31, 2012, the last date of follow-up. We restricted the study to patients who had a repeat colonoscopy 1 to 10 years after the index examination (Fig. 1).

Patients with diabetes were identified using the Northern California Kaiser Permanente Diabetes Registry, which was started in 1993 (22). The updated criteria for inclusion in the registry are as follows: (i) one or more prescriptions within the diabetes therapeutic class, one or more inpatient diabetes diagnosis, or two or more outpatient diabetes diagnoses in a prior 5-calendar-year period; or (ii) two or more pertinent abnormal labs [serum glycosylated hemoglobin (HbA1c)  $\geq 6.5\%$ , fasting glucose  $\geq 126$  mg/dL, or glucose  $\geq 200$  mg/dL]

in a prior two-calendar-year period. Patients with gestational diabetes, type 1 diabetes, or who were prescribed diabetes medications for indications other than type 2 diabetes, such as lipodystrophy, metabolic syndrome, prediabetes, polycystic ovary syndrome, or amenorrhea, were excluded. Other exclusion criteria were:  $<2$  years of health plan membership before cohort entry; history of colorectal cancer diagnosis or colectomy before or within 1 year after the index colonoscopy; and documented familial colorectal cancer syndromes such as Lynch syndrome or familial adenomatous polyposis.

To focus on new metformin users, we excluded those on diabetes medications more than 1 year before the index colonoscopy. This approach minimizes time-related biases (23) and also minimizes the potential to selectively include lesions that may have been resistant to the effect of metformin, and thus are destined to recur. This approach also minimizes the inclusion of patients who may have had diabetes for longer duration before study baseline or used metformin for indications other than type 2 diabetes. We also excluded patients who discontinued diabetes medication before the index colonoscopy; used metformin for less than 6 months; or used other diabetes medications without metformin (Fig. 1).

### Data sources

Information on clinical diagnoses was obtained from electronic databases using International Classification of Disease, Ninth Edition, Clinical Modification (ICD-9-CM) codes. Drug dispensing data were obtained from pharmacy files using National Drug Codes. Receipt of initial and follow-up colonoscopies were ascertained using Current Procedural Terminology and ICD-9-CM codes, as previously described (24). Adenoma diagnosis, location, and histology were obtained from pathology reports using Systematized Nomenclature of Medicine Clinical Terms (SNOMED) codes (24).

### Outcome measurements

The primary outcome was colorectal adenoma recurrence, defined as  $\geq 1$  histologically confirmed adenoma or adenocarcinoma at the repeat colonoscopy. Person-time was computed from the index colonoscopy date. Adenoma location was classified as right colon (proximal to and including the splenic flexure, irrespective of whether adenomas were detected in the distal colon), left colon/rectum, or unspecified using SNOMED codes (24). The location was unspecified for approximately one third of baseline adenomas.

### Exposure measurement

The primary exposure of interest was metformin-only use during the follow-up period based on dispensings. We also evaluated metformin used in combination with other diabetes medications, such as sulfonylureas (any-metformin). We computed the metformin total dose (with or without other diabetes medications) dispensed during the follow-up period to assess dose-related effects; discontinuous dispensing periods were summed together. Total dose quartiles (Q) were calculated among all metformin users as follows: 50–399 (Q1); 400–799 (Q2); 800–1499 (Q3); and  $\geq 1,500$  (Q4) grams. We assumed that patients used all dispensed metformin.

### Covariates

Information was available on patient age, sex, race/ethnicity, and baseline body mass index (BMI). BMI is related to the risk of type 2 diabetes, type of diabetes medication prescribed, disease severity, and likelihood of receiving colonoscopy (25, 26). The performing physician and colonoscopy indications were derived using previously validated algorithms (27, 28). We obtained serum HbA1c levels from laboratory databases. HbA1c levels correlate with serum glucose levels, which may be related to disease risk (29, 30).

### Statistical analyses

We first used the Kaplan–Meier product limit estimator to evaluate the association between metformin use and adenoma recurrence risk. Multilevel Cox proportional hazard models with clustering on the performing provider were used to estimate HRs and 95% confidence intervals (CI) for the association between exposure to metformin in the 1- to 10-year period after the index colonoscopy and risk of adenoma recurrence. The reference group in all analyses was patients who did not receive any diabetes medications during the study period. Multivariable models were adjusted for the covariates noted above, except HbA1c, which was not statistically significantly associated with adenoma recurrence risk ( $P > 0.05$ ), and did not influence the main effects. We stratified

on repeat colonoscopy indication (surveillance vs. diagnostic) on some of our analyses because of statistically significant interaction with metformin use. We also performed analyses according to baseline adenoma location (right vs. left colon) due to *a priori* interest and possible biologic differences in colorectal lesions according to location (31). In secondary analyses, we evaluated the association between any-metformin exposure (with or without other diabetes medications) and adenoma recurrence risk, as either a binary variable, or according to total dispensed dose quartiles.

We performed several sensitivity analyses, including limiting the cohort to new metformin initiators ( $n = 2,213$ ), and to those with repeat examinations 3 to 5, or 6 to 10 years from baseline consistent with surveillance recommendations (32). Type 2 diabetes occurs insidiously and patients may remain in a prediabetic state or have undetected diabetes for many years before clinical diagnosis (33–35). We assumed this preclinical phase to be  $< 5$  years and performed analyses in which accrued person-time was computed from no further than 5 years before the diabetes diagnosis date. We also assessed the duration of therapy in our sensitivity analyses (Supplementary Table S1). Because of reports of potential gender differences in the association between having diabetes and colorectal neoplasia risk, we performed further analysis stratified on gender (36), although there was no statistically significant gender–metformin interaction observed. We examined and did not find a statistically significant association with level of glycemic control based on an HbA1C of  $\leq 7\%$  versus higher. All analyses were performed using SAS 9.3 software (SAS Institute).

## Results

### Baseline characteristics

We identified 288,079 patients who were 40- to 89-years-old and had undergone colonoscopy during 2000 to 2009, of whom 95,927 had  $\geq 1$  histologically confirmed adenoma. Of those, 2,412 eligible patients with type 2 diabetes were included in the study (Fig. 1). The median time to repeat exam (4.5 years) did not differ significantly across exposures. On average, metformin users were on therapy for 878 days (range, 146–3,066), received 0.99 grams per day (range, 0.10–3.17), and had a total dose of 800 grams (range: 50–5,900) during the study period.

### Association with adenoma recurrence risk

A total of 834 patients had used metformin, including 377 patients who received it in combination with other drugs, most commonly sulfonylurea, and 1,578 who did not receive diabetes therapy (Fig. 1). Cumulatively, 196 (42.9%) of the 457 patients on metformin-only had adenoma recurrence compared with 739 (46.8%) patients who did not receive diabetes therapy (untreated; Table 1). In Kaplan–Meier analysis, untreated patients had a higher rate of adenoma recurrence than those on metformin (Fig. 2, log-rank test  $P < 0.001$ ). Cox modeling showed a 24% lower risk of adenoma recurrence (adjusted HR, 0.76; 95% CI, 0.65–0.89; Table 2) in those on metformin-only. This association was observed in analyses stratified by repeat colonoscopy indication (surveillance  $n = 1,329$ , adjusted HR, 0.89; 95% CI, 0.73–1.09; diagnostic  $n = 1,083$ , adjusted HR, 0.62; 95% CI, 0.50–0.79;  $P_{\text{interaction}} = 0.02$ ), and by location of the index lesion (right colon  $n = 1,117$ , adjusted HR, 0.75; 95% CI, 0.62–0.90; left colon/rectum  $n = 421$ , adjusted HR, 0.66; 95% CI, 0.41–1.05;  $P_{\text{interaction}}$

**Table 1** . Characteristics of the cohort according to treatment type, KPNC 2000–2009 (*n* = 2,412)

Characteristics	No diabetes medication ( <i>n</i> = 1,578)	Metformin-only ( <i>n</i> = 457)	Metformin plus other ( <i>n</i> = 377)
Age at baseline, y			
40–49	54 (3.4)	27 (5.9)	33 (8.8)
50–54	164 (10.4)	71 (15.5)	79 (21.0)
55–59	199 (12.6)	83 (18.2)	80 (21.2)
60–64	289 (18.3)	94 (20.6)	72 (19.1)
65–69	322 (20.4)	74 (16.2)	64 (17.0)
70–74	318 (20.2)	73 (16.0)	32 (8.5)
75+	232 (14.7)	35 (7.7)	17 (4.5)
Sex			
Female	575 (36.4)	178 (38.9)	149 (39.5)
Male	1,003 (63.6)	279 (61.1)	228 (60.5)
Race/ethnicity			
Non-Hispanic white	943 (59.8)	253 (55.4)	222 (58.9)
Hispanic	199 (12.6)	64 (14.0)	57 (15.1)
Black	112 (7.1)	33 (7.2)	16 (4.2)
Asian/Pacific Islander	216 (13.7)	76 (16.6)	48 (12.7)
Other <sup>a</sup>	108 (6.8)	31 (6.8)	34 (9.0)
BMI closest to baseline exam			
<25.0	208 (13.2)	42 (9.2)	30 (8.0)
25.0–29.9	484 (30.7)	109 (23.9)	76 (20.2)
30+	801 (50.8)	279 (61.1)	252 (66.8)
Unknown	85 (5.4)	27 (5.9)	19 (5.0)
Indication for repeat exam			
Surveillance	844 (53.5)	279 (61.1)	206 (54.6)
Diagnostic	734 (46.5)	178 (38.9)	171 (45.4)
Recurrent adenoma			
No	839 (53.2)	261 (57.1)	195 (51.7)
Any	739 (46.8)	196 (42.9)	182 (48.3)
Mean HbA1c, mean (SD; <i>n</i> = 2,293)	6.18 (0.59)	6.73 (0.72)	7.35 (0.88)
Time to repeat exam, median (IQR)	4.1 (2.4)	4.9 (2.5)	5.2 (2.6)

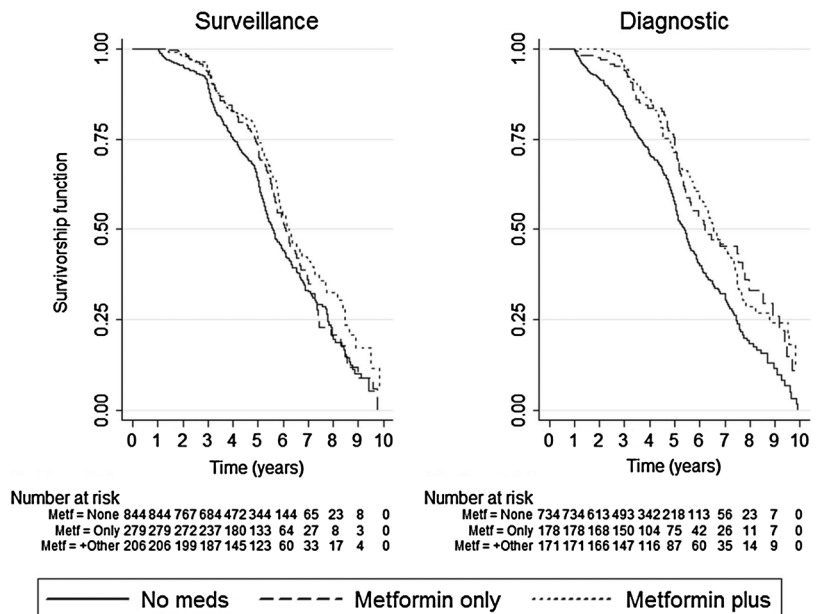
<sup>a</sup>Other race/ethnicity includes Native American, multiracial/other, and unknown.

= 0.95; Table 2). However, the association was not statistically significant for left colon lesions or surveillance examinations.

In secondary analyses, any-metformin use (alone and in combination with other diabetes medications) was similarly associated with a lower adenoma recurrence risk (adjusted HR, 0.74; CI

0.66–0.84; Table 2). The risk of adenoma recurrence was monotonically lower with increasing total dose. Compared with no therapy, and with increasing quartiles denoting increasing dose, the adjusted HR was 0.90 (95% CI, 0.72–1.12) for Q1, 0.89 (95% CI, 0.70–1.12) for Q2, 0.80 (95% CI, 0.63–1.01) for Q3,

**Figure 2.** Kaplan-Meier curves of relationship of metformin use and adenoma recurrence. The curves are stratified by indication for the repeat examination. The log-rank test *P* values were as follows (compared to no diabetes medications): for surveillance, 0.051 for metformin-only and 0.002 for metformin plus other; for diagnostic, <0.001 for both metformin-only and metformin plus other.





**Table 2** Associations between metformin use and risk of colorectal adenoma recurrence in patients with type 2 diabetes

Exposure categories	Sample (n)	Adenoma detected (n)	Recurrent adenoma (all indications and locations)	Indication for repeat colonoscopy <sup>a</sup>			Adjusted HR (95% CI)		
				Diagnostic	Surveillance	Right colon	Left colon/rectum		
Separate categories for metformin-only and combination therapy									
No diabetes medication (reference)	1,578	739	1.00	1.00	1.00	1.00	1.00	1.00	1.00
Metformin-only	457	196	0.76 (0.65–0.89)	0.62 (0.50–0.79)	0.89 (0.73–1.09)	0.75 (0.62–0.90)	0.66 (0.41–1.05)	0.66 (0.41–1.05)	0.66 (0.41–1.05)
Metformin + other	377	182	0.72 (0.62–0.85)	0.66 (0.52–0.83)	0.80 (0.64–1.02)	0.73 (0.58–0.92)	0.96 (0.63–1.47)	0.96 (0.63–1.47)	0.96 (0.63–1.47)
Any metformin									
No diabetes medication (reference)	1,578	739	1.00	1.00	1.00	1.00	1.00	1.00	1.00
Any metformin	834	378	0.74 (0.66–0.84)	0.64 (0.53–0.77)	0.85 (0.71–1.02)	0.74 (0.64–0.86)	0.79 (0.54–1.15)	0.79 (0.54–1.15)	0.79 (0.54–1.15)
Total dose, quartiles <sup>c</sup>									
No diabetes medication (reference)	1,578	739	1.00	1.00	1.00	1.00	1.00	1.00	1.00
Quartile 1	205	88	0.90 (0.72–1.12)	0.63 (0.46–0.86)	1.32 (1.01–1.73)	0.86 (0.66–1.13)	1.17 (0.61–2.23)	1.17 (0.61–2.23)	1.17 (0.61–2.23)
Quartile 2	209	95	0.98 (0.79–1.21)	0.97 (0.69–1.37)	1.02 (0.79–1.31)	0.91 (0.73–1.15)	0.62 (0.32–1.21)	0.62 (0.32–1.21)	0.62 (0.32–1.21)
Quartile 3	205	95	0.80 (0.63–1.01)	0.69 (0.48–0.97)	0.91 (0.69–1.20)	0.71 (0.51–0.98)	1.14 (0.70–1.85)	1.14 (0.70–1.85)	1.14 (0.70–1.85)
Quartile 4	215	100	0.50 (0.42–0.60)	0.47 (0.35–0.62)	0.55 (0.41–0.72)	0.58 (0.46–0.72)	0.49 (0.28–0.88)	0.49 (0.28–0.88)	0.49 (0.28–0.88)

NOTE: Models were run separately for each set of exposure categories. All models are adjusted for age category, sex, race/ethnicity, BMI, and indication for repeat examination, as appropriate.

<sup>a</sup> $P_{interaction} = 0.02$  for indication, but was 0.95 for tumor location.

<sup>b</sup>Unspecified adenoma location at baseline ( $n = 874$ ).

<sup>c</sup>Includes patients receiving metformin alone and metformin in combination with other medications  $P_{trend} < 0.001$ .

and 0.50 (95% CI, 0.42–0.60) for Q4 ( $P_{trend} < 0.001$ ). The findings were similar for analysis of average daily dose dispensed and the duration of therapy (Supplementary Table S1). The associations with metformin use were stable in sensitivity analyses, excluding patients who had used antidiabetes medication before the index colonoscopy, or person-time accrued >5 years before the diabetes diagnosis date (Supplementary Table S2), excluding repeat colonoscopies performed <3 years of index date (Supplementary Table S3), or according to gender (Supplementary Table S4).

## Discussion

We found that, in patients with type 2 diabetes, metformin use was associated with a lower risk of colorectal adenoma recurrence when compared with no diabetes therapy. The observed risk was inversely related to metformin total dose and was stable in various sensitivity analyses, including models that were restricted to new therapy initiators. These findings suggest that, in addition to its established role in treating diabetes and related conditions, metformin use may also confer additional benefits in lowering the risk of adenoma.

The association of metformin with colorectal cancer or adenoma risk is controversial. Our findings are consistent with, and support previous reports that metformin use was associated with colorectal cancer risk. Our findings were stable in various secondary and sensitivity analyses. This study's findings may also suggest a potential explanation for how metformin may lower colorectal cancer risk through the adenoma–carcinoma sequence. Metformin's effect on adenoma risk could be mediated through several posited biologic mechanisms such as mechanistic target of rapamycin (mTOR) pathway inhibition and insulin-like growth factor signaling suppression (37).

There are no previous studies to directly compare with ours, but Lee and colleagues (38) reported that, in patients with type 2 diabetes who had undergone colorectal cancer resection, metformin use was associated with lower odds (OR, 0.27; 95% CI, 0.10–0.76) of recurrent adenoma. Kanadiya and colleagues (21) also reported that metformin use was associated with lower odds (OR, 0.55; 95% CI, 0.34–0.87) of adenoma in a study of 405 patients with type 2 diabetes undergoing screening colonoscopy ( $n = 148$ ). In contrast, our study examined adenoma risk during the surveillance phase of the cancer care continuum on a large cohort of 2,412 patients, with 834 exposed to metformin. Our design addressed several potential time-related biases of observational studies (23).

Our study has some potential limitations. First, we restricted the follow-up time to the first repeat colonoscopy, which limited the time interval for detecting recurrent lesions as well as our ability for direct causal inference. However, there was no substantive difference in the follow-up time according to exposure group. Also, we could not account for exposure to other potential adenoma chemopreventive strategies, such as COX-2 inhibitors, aspirin and other non-steroidal anti-inflammatory drugs, statins, lifestyle factors, smoking history, and dietary factors such as folic acid and calcium (9–11, 39–41).

In conclusion, we found an inverse association between metformin use and risk of adenoma recurrence in patients with type 2 diabetes that was independent of other factors assessed. These findings suggest a possible role for metformin in the secondary chemoprevention of adenomas.

## Disclosure of Potential Conflicts of Interest

No potential conflicts of interest were disclosed.

## Authors' Contributions

**Conception and design:** R.A. Pietrofesa, A. Zebrowski, D.A. Corley, C.A. Doubeni

**Development of methodology:** A.R. Marks, R.A. Pietrofesa, C.D. Jensen, D.A. Corley, C.A. Doubeni

**Acquisition of data (provided animals, acquired and managed patients, provided facilities, etc.):** A.R. Marks, D.A. Corley, C.A. Doubeni

**Analysis and interpretation of data (e.g., statistical analysis, biostatistics, computational analysis):** A.R. Marks, R.A. Pietrofesa, C.D. Jensen, D.A. Corley, C.A. Doubeni

**Writing, review, and/or revision of the manuscript:** A.R. Marks, R.A. Pietrofesa, C.D. Jensen, A. Zebrowski, D.A. Corley, C.A. Doubeni

**Administrative, technical, or material support (i.e., reporting or organizing data, constructing databases):** A.R. Marks, R.A. Pietrofesa, C.A. Doubeni

**Study supervision:** D.A. Corley, C.A. Doubeni

## Acknowledgments

The authors thank Sean Hennessy, PharmD, PhD, and James D. Lewis, MD, MSCE, for advice on study design, analysis, and helpful comments and suggestions on the article.

## Grant Support

This work was funded in part from the Center for Pharmacoepidemiology Research and Training, Center for Clinical Epidemiology and Biostatistics, University of Pennsylvania (to C.A. Doubeni). The work was also supported in part by grants K01CA127118 and U01CA151736 (to C.A. Doubeni) and grant U54CA163262 (to C.A. Doubeni and D.A. Corley) from the NCI at the NIH.

The costs of publication of this article were defrayed in part by the payment of page charges. This article must therefore be hereby marked *advertisement* in accordance with 18 U.S.C. Section 1734 solely to indicate this fact.

Received May 21, 2015; revised August 21, 2015; accepted August 24, 2015; published OnlineFirst September 16, 2015.

## References

- Siegel RL, Miller KD, Jemal A. Cancer statistics, 2015. *CA Cancer J Clin* 2015;65:5–29.
- Vogelstein B, Fearon ER, Hamilton SR, Kern SE, Preisinger AC, Leppert M, et al. Genetic alterations during colorectal-tumor development. *N Engl J Med* 1988;319:525–32.
- Winawer SJ, Zauber AG, O'Brien MJ, Ho MN, Gottlieb L, Sternberg SS, et al. Randomized comparison of surveillance intervals after colonoscopic removal of newly diagnosed adenomatous polyps. The National Polyp Study Workgroup. *N Engl J Med* 1993;328:901–6.
- van Stolk RU, Beck GJ, Baron JA, Haile R, Summers R. Adenoma characteristics at first colonoscopy as predictors of adenoma recurrence and characteristics at follow-up. The polyp prevention study group. *Gastroenterology* 1998;115:13–8.
- Laiyemo AO, Doubeni C, Brim H, Ashktorab H, Schoen RE, Gupta S, et al. Short- and long-term risk of colorectal adenoma recurrence among whites and blacks. *Gastrointest Endosc* 2013;77:447–54.
- Lieberman DA, Holub J, Eisen G, Kraemer D, Morris CD. Utilization of colonoscopy in the United States: results from a national consortium. *Gastrointest Endosc* 2005;62:875–83.
- Lieberman DA, Williams JL, Holub JL, Morris CD, Logan JR, Eisen GM, et al. Colonoscopy utilization and outcomes 2000 to 2011. *Gastrointest Endosc* 2014;80:133–43.
- Sandler RS, Halabi S, Baron JA, Budinger S, Paskett E, Keresztes R, et al. A randomized trial of aspirin to prevent colorectal adenomas in patients with previous colorectal cancer. *N Engl J Med* 2003;348:883–90.
- Baron JA, Cole BF, Sandler RS, Haile RW, Ahnen D, Bresalier R, et al. A randomized trial of aspirin to prevent colorectal adenomas. *N Engl J Med* 2003;348:891–9.
- Arber N, Eagle CJ, Spicak J, Racz I, Dite P, Hajer J, et al. Celecoxib for the prevention of colorectal adenomatous polyps. *N Engl J Med* 2006;355:885–95.
- Bertagnolli MM, Eagle CJ, Zauber AG, Redston M, Solomon SD, Kim K, et al. Celecoxib for the prevention of sporadic colorectal adenomas. *N Engl J Med* 2006;355:873–84.
- Qaseem A, Humphrey LL, Sweet DE, Starkey M, Shekelle P. Oral pharmacologic treatment of type 2 diabetes mellitus: a clinical practice guideline from the American College of Physicians. *Ann Intern Med* 2012;156:218–31.
- Luo S, Li JY, Zhao LN, Yu T, Zhong W, Xia ZS, et al. Diabetes mellitus increases the risk of colorectal neoplasia: an updated meta-analysis. *Clin Res Hepatol Gastroenterol* 2015;S2210–7401:00137–0.
- Guraya SY. Association of type 2 diabetes mellitus and the risk of colorectal cancer: a meta-analysis and systematic review. *World J Gastroenterol* 2015;21:6026–31.
- Zhang ZJ, Zheng ZJ, Kan H, Song Y, Cui W, Zhao G, et al. Reduced risk of colorectal cancer with metformin therapy in patients with type 2 diabetes: a meta-analysis. *Diabetes Care* 2011;34:2323–8.
- Libby G, Donnelly LA, Donnan PT, Alessi DR, Morris AD, Evans JM. New users of metformin are at low risk of incident cancer: a cohort study among people with type 2 diabetes. *Diabetes Care* 2009;32:1620–5.
- Currie CJ, Poole CD, Gale EA. The influence of glucose-lowering therapies on cancer risk in type 2 diabetes. *Diabetologia* 2009;52:1766–77.
- Lee MS, Hsu CC, Wahlqvist ML, Tsai HN, Chang YH, Huang YC. Type 2 diabetes increases and metformin reduces total, colorectal, liver and pancreatic cancer incidences in Taiwanese: a representative population prospective cohort study of 800,000 individuals. *BMC Cancer* 2011;11:20.
- Smiechowski B, Azoulay L, Yin H, Pollak MN, Suissa S. The use of metformin and colorectal cancer incidence in patients with type II diabetes mellitus. *Cancer Epidemiol Biomarkers Prev* 2013;22:1877–83.
- Kowall B, Stang A, Rathmann W, Kostev K. No reduced risk of overall, colorectal, lung, breast, and prostate cancer with metformin therapy in diabetic patients: database analyses from Germany and the UK. *Pharmacoepidemiol Drug Saf* 2015;24:865–74.
- Kanadiya MK, Gohel TD, Sanaka MR, Thota PN, Shubrook JH, Jr. Relationship between type-2 diabetes and use of metformin with risk of colorectal adenoma in an American population receiving colonoscopy. *J Diabetes Complications* 2013;27:463–6.
- Karter AJ, Ferrara A, Liu JY, Moffet HH, Ackerson LM, Selby JV. Ethnic disparities in diabetic complications in an insured population. *JAMA* 2002;287:2519–27.
- Suissa S, Azoulay L. Metformin and the risk of cancer: time-related biases in observational studies. *Diabetes Care* 2012;35:2665–73.
- Corley DA, Jensen CD, Marks AR, Zhao WK, deBoer J, Levin TR, et al. Variation of adenoma prevalence by age, sex, race, and colon location in a large population: implications for screening and quality programs. *Clin Gastroenterol Hepatol* 2013;11:172–80.
- Lewis JD, Capra AM, Achacoso NS, Ferrara A, Levin TR, Quesenberry CP Jr, et al. Medical therapy for diabetes is associated with increased use of lower endoscopy. *Pharmacoepidemiol Drug Saf* 2007;16:1195–202.
- Rosen AB, Schneider EC. Colorectal cancer screening disparities related to obesity and gender. *J Gen Intern Med* 2004;19:332–8.
- Lee JK, Jensen CD, Lee A, Doubeni CA, Zauber AG, Levin TR, et al. Development and validation of an algorithm for classifying colonoscopy indication. *Gastrointest Endosc* 2015;81:575–82 e4.
- Corley DA, Jensen CD, Marks AR, Zhao WK, Lee JK, Doubeni CA, et al. Adenoma detection rate and risk of colorectal cancer and death. *N Engl J Med* 2014;370:1298–306.
- Khaw KT, Wareham N, Bingham S, Luben R, Welch A, Day N. Preliminary communication: glycated hemoglobin, diabetes, and incident colorectal cancer in men and women: a prospective analysis from the European prospective investigation into cancer-Norfolk study. *Cancer Epidemiol Biomarkers Prev* 2004;13:915–9.
- Yang YX, Habel LA, Capra AM, Achacoso NS, Quesenberry CP, Jr., Ferrara A, et al. Serial glycosylated hemoglobin levels and risk of colorectal neoplasia

- among patients with type 2 diabetes mellitus. *Cancer Epidemiol Biomarkers Prev* 2010;19:3027–36.
31. Laiyemo AO, Doubeni C, Sanderson AK, 2nd, Pinsky PF, Badurdeen DS, Doria-Rose VP, et al. Likelihood of missed and recurrent adenomas in the proximal versus the distal colon. *Gastrointestinal Endosc* 2011;74:253–61.
  32. Lieberman DA, Rex DK, Winawer SJ, Giardiello FM, Johnson DA, Levin TR. Guidelines for colonoscopy surveillance after screening and polypectomy: a consensus update by the US Multi-Society Task Force on Colorectal Cancer. *Gastroenterology* 2012;143:844–57.
  33. Friedman SM, Vallipuram J, Baswick B. Incidental findings of elevated random plasma glucose in the ED as a prompt for outpatient diabetes screening: a retrospective study. *BMJ Open* 2013;3:e003486.
  34. Meigs JB, Muller DC, Nathan DM, Blake DR, Andres R. Baltimore Longitudinal Study of A. The natural history of progression from normal glucose tolerance to type 2 diabetes in the Baltimore Longitudinal Study of Aging. *Diabetes* 2003;52:1475–84.
  35. Harris MI, Klein R, Welborn TA, Knudman MW. Onset of NIDDM occurs at least 4–7 yr before clinical diagnosis. *Diabetes Care* 1992;15:815–9.
  36. Campbell PT, Deka A, Jacobs EJ, Newton CC, Hildebrand JS, McCullough ML, et al. Prospective study reveals associations between colorectal cancer and type 2 diabetes mellitus or insulin use in men. *Gastroenterology* 2010;139:1138–46.
  37. Pollak MN. Investigating metformin for cancer prevention and treatment: the end of the beginning. *Cancer Discov* 2012;2:778–90.
  38. Lee JH, Jeon SM, Hong SP, Cheon JH, Kim TI, Kim WH. Metformin use is associated with a decreased incidence of colorectal adenomas in diabetic patients with previous colorectal cancer. *Dig Liver Dis* 2012;44:1042–7.
  39. Broughton T, Sington J, Beales IL. Statin use is associated with a reduced incidence of colorectal adenomatous polyps. *Int J Colorectal Dis* 2013;28:469–76.
  40. Cole BF, Baron JA, Sandler RS, Haile RW, Ahnen DJ, Bresalier RS, et al. Folic acid for the prevention of colorectal adenomas: a randomized clinical trial. *JAMA* 2007;297:2351–9.
  41. Baron JA, Beach M, Mandel JS, van Stolk RU, Haile RW, Sandler RS, et al. Calcium supplements for the prevention of colorectal adenomas. *N Engl J Med* 1999;340:101–7.