

# Inhibitory Effects of $\gamma$ - and $\delta$ -Tocopherols on Estrogen-Stimulated Breast Cancer *In Vitro* and *In Vivo*

Min Ji Bak<sup>1</sup>, Soumyasri Das Gupta<sup>1</sup>, Joseph Wahler<sup>1</sup>, Hong Jin Lee<sup>2</sup>, Xiaowei Li<sup>1</sup>, Mao-Jung Lee<sup>1</sup>, Chung S. Yang<sup>1,3</sup>, and Nanjoo Suh<sup>1,3</sup>

## Abstract

Estrogens have been implicated as complete carcinogens for breast and other tissues through mechanisms involving increased cell proliferation, oxidative stress, and DNA damage. Because of their potent antioxidant activity and other effects, tocopherols have been shown to exert antitumor activities in various cancers. However, limited information is available on the effect of different forms of tocopherols in estrogen-mediated breast cancer. To address this, we examined the effects of  $\alpha$ -,  $\gamma$ -, and  $\delta$ -tocopherols as well as a natural  $\gamma$ -tocopherol-rich mixture of tocopherols,  $\gamma$ -TmT, on estrogen-stimulated MCF-7 cells *in vitro* and *in vivo*. For the *in vivo* studies, MCF-7 cells were injected into the mammary fat pad of immunodeficient mice previously implanted with estrogen pellets. Mice were then administered diets containing 0.2%  $\alpha$ -,  $\gamma$ -,  $\delta$ -tocopherol, or  $\gamma$ -TmT for 5 weeks. Treatment with  $\alpha$ -,  $\gamma$ -,  $\delta$ -tocopherols,

and  $\gamma$ -TmT reduced tumor volumes by 29% ( $P < 0.05$ ), 45% ( $P < 0.05$ ), 41% ( $P < 0.05$ ), and 58% ( $P < 0.01$ ), as well as tumor weights by 20%, 37% ( $P < 0.05$ ), 39% ( $P < 0.05$ ), and 52% ( $P < 0.05$ ), respectively.  $\gamma$ - and  $\delta$ -tocopherols and  $\gamma$ -TmT inhibited the expression of cell proliferation-related genes such as cyclin D1 and c-Myc, and estrogen-related genes such as TFF/pS2, cathepsin D, and progesterone receptor in estrogen-stimulated MCF-7 cells *in vitro*. Further,  $\gamma$ - and  $\delta$ -tocopherols decreased the levels of estrogen-induced oxidative stress and nitrosative stress markers, 8-hydroxy-2'-deoxyguanosine and nitrotyrosine, as well as the DNA damage marker,  $\gamma$ -H2AX. Our results suggest that  $\gamma$ - and  $\delta$ -tocopherols and the  $\gamma$ -tocopherol-rich mixture are effective natural agents for the prevention and treatment of estrogen-mediated breast cancer. *Cancer Prev Res*; 10(3); 188–97. ©2017 AACR.

## Introduction

Extended exposure to estrogen is epidemiologically and experimentally associated with an increased risk of developing breast cancer (1). This increased risk appears to be related to the role of estrogen in the regulation of genes involved in breast cell proliferation and is mediated through the estrogen receptor (ER; ref. 2). In addition to ER-dependent effects, there are several ER-independent pathways that have been proposed for biological responses to estrogen including carcinogenesis (1, 3). The ER-independent mechanisms are mediated through the metabolism of estrogen to generate genotoxic molecules, free radicals, and ROS that could be involved in the pathogenesis of breast cancer (1, 4). Oxidative stress exerted by the metabolites of estrogen is also thought to act in concert with ER signaling to promote genetic alterations, DNA damage, and

deregulated cell proliferation (2, 5). As a result of these findings, considerable effort has been made to develop strategies to selectively block the effect of overexposure to estrogen as an approach to prevent and treat human breast cancers.

One area of investigational focus has been the use of dietary components to inhibit breast carcinogenesis (6). Many natural products and bioactive compounds found in foods have demonstrated inhibitory effects on breast carcinogenesis via the reduction of estrogen-induced oxidative stress, as well as down-regulation of ER signaling, without excessive toxicity (7–9). Our laboratory and others have examined the potential use of tocopherols, which are potent antioxidants in the diet, in prevention and treatment of breast and other cancers (10–13).

Tocopherols, the major forms of vitamin E, are a family of fat soluble phenolic compounds consisting of a chromanol ring system and a 16-carbon side chain (14). Specific forms of tocopherol are distinguished by the number and position of methyl groups on the chromanol ring, and exist as  $\alpha$ -,  $\beta$ -,  $\gamma$ -, or  $\delta$ -tocopherol (14). Many studies have shown that tocopherols inhibit cancer formation and development due to their strong antioxidant properties (12, 15, 16).  $\alpha$ -Tocopherol is considered to be the classic form of vitamin E as it is the major form of tocopherol found in blood and tissues (17). As a result,  $\alpha$ -tocopherol has been the most widely used form of tocopherol for cancer prevention studies. However, large-scale human trials with  $\alpha$ -tocopherol did not find a cancer-preventive effect (18–20).

$\gamma$ -Tocopherol is the most abundant tocopherol in the U.S. diet, found in vegetable oils, such as soybean, corn, and cottonseed

<sup>1</sup>Department of Chemical Biology, Ernest Mario School of Pharmacy, Rutgers, The State University of New Jersey, Piscataway, New Jersey. <sup>2</sup>Department of Food Science and Technology, Chung-Ang University, Anseong, South Korea. <sup>3</sup>Rutgers Cancer Institute of New Jersey, New Brunswick, New Jersey.

**Note:** Supplementary data for this article are available at Cancer Prevention Research Online (<http://cancerprevres.aacrjournals.org/>).

**Corresponding Author:** Nanjoo Suh, Rutgers University, Ernest Mario School of Pharmacy, 164 Frelinghuysen Road, Piscataway, NJ 08854. Phone: 848-445-8030; Fax: 732-445-0687; E-mail: nsuh@pharmacy.rutgers.edu

**doi:** 10.1158/1940-6207.CAPR-16-0223

©2017 American Association for Cancer Research.

(17). Treatment with  $\gamma$ - and  $\delta$ -tocopherols was shown to inhibit mammary tumor growth in N-methyl-N-nitrosourea (NMU)-induced Sprague Dawley (SD) rats, but did not prevent human epidermal growth factor receptor 2 (HER2/neu)-dependent tumorigenesis (10).  $\gamma$ -TmT, a byproduct of refined vegetable oil, is a naturally occurring tocopherol mixture rich in  $\gamma$ -tocopherol (21, 22).  $\gamma$ -TmT has been shown to inhibit tumorigenesis in ER-positive breast and other cancer models (11, 21, 23, 24).  $\gamma$ -TmT suppresses NMU-induced mammary tumor growth in SD rats by downregulation of ER $\alpha$ , Akt, and activation of PPAR $\gamma$  (25). In addition, dietary supplementation with  $\gamma$ -TmT reduced oxidative and nitrosative stress and upregulated Nrf2-dependent antioxidant response in estrogen-induced early mammary hyperplasia in ACI rats (21). Treatment with  $\gamma$ -TmT suppressed inflammatory markers, inhibited estrogen-induced cell proliferation, and regulated the expression of nuclear receptors ER $\alpha$  and PPAR $\gamma$  in ACI rats (26).

We have recently demonstrated that dietary administration of a natural mixture of  $\gamma$ -TmT suppresses estrogen-mediated mammary tumor growth in both ACI rats and MCF-7 xenografted immunodeficient mice (11). In the present study, we investigated the relative activities of different forms of tocopherols in estrogen-mediated mammary tumor growth, expression of cell proliferation and estrogen-related genes, as well as estrogen-induced oxidative/nitrosative stress and DNA damage in breast cancer.

## Materials and Methods

### Reagents and cell culture

$\gamma$ -TmT (Covi-ox T-90 containing 56.1%  $\gamma$ -tocopherol, 22.3%  $\delta$ -tocopherol, 11.5%  $\alpha$ -tocopherol, and 1.2%  $\beta$ -tocopherol) were obtained from BASF Corporation (Covi-ox T-90, Batch number 0008778732).  $\gamma$ -Tocopherol was purified from a  $\gamma$ -T-rich mixture of tocopherols (obtained from BASF Corporation) to  $\geq 97\%$  purity with no detectable  $\alpha$ - and  $\delta$ -tocopherol.  $\alpha$ - and  $\delta$ -Tocopherols were purified from commercial grade  $\alpha$ -tocopherol (T3634) and  $\delta$ -tocopherol (T2028; obtained from Sigma-Aldrich), to  $\geq 97\%$  purity with no other detectable forms of tocopherol. A CombiFlash Companion XL automated flash chromatographic system (Teledyne ISCO) with a RediSep Rf Gold high-performance flash silica gel column (20–40  $\mu$ m in particle size) was used for the purification. Each tocopherol was dissolved in dimethyl sulfoxide (Sigma-Aldrich) for cell culture studies. The MCF-7 breast cancer cell line was acquired from the American Type Culture Collection (ATCC) and authenticated by short tandem repeat profiling at the ATCC. MCF-7 cells were grown in DMEM/F12 medium, 10% FBS, and 1% penicillin/streptomycin at 37°C and 5% CO<sub>2</sub>. When noted, MCF-7 cells were treated in 10% charcoal-stripped FBS/phenol red free RPMI medium to examine effects of tocopherols on estrogen-stimulated events. MDA-MB-231 cells were maintained in DMEM medium, 10% FBS, 1% penicillin/streptomycin, and 1% glutamine at 37°C and 5% CO<sub>2</sub> in a humidified atmosphere.

### Animals and experimental procedures

Female nu/nu mice were obtained from Charles River Breeding Laboratories. After 2 weeks of acclimatization, the mice (7–8 weeks old) were implanted subcutaneously with 17 $\beta$ -estradiol pellets (0.72 mg, 90 days release; Innovative Research of America). Two days following estradiol implan-

tation, MCF-7 cells ( $5 \times 10^6$ ) were orthotopically injected into the mouse mammary fat pad, and the mice then fed with different tocopherol diets, containing 0.2%  $\alpha$ -tocopherol,  $\gamma$ -tocopherol,  $\delta$ -tocopherol or  $\gamma$ -TmT, or control diet throughout the remainder of the study. Tumors were palpated twice per week, and body weights were measured weekly. Tumors were measured with a vernier caliper, and tumor volume ( $V$ , cm<sup>3</sup>) was calculated using the equation  $V = D \times d^2/2$ , where  $D$  (cm) and  $d$  (cm) are the largest and smallest perpendicular diameters. All animal studies were approved by the Institutional Review Board for the Animal Care and Facilities Committee at Rutgers, the State University of New Jersey (Protocol Number: 04-001).

### Diets for animal experiment

Semi-purified AIN-93M obtained from Research Diets, Inc. was used as the control diet. The test diets were prepared by adding 0.2% of each tocopherol to the AIN-93M diet. The diets were stored in sealed containers at 4°C, and the food cups were replenished with fresh food twice weekly.

### Analysis of tocopherol levels in mouse serum

Mouse serum was collected at termination, and the levels of  $\alpha$ -,  $\gamma$ -, and  $\delta$ -tocopherols in the serum were analyzed by high-performance liquid chromatography using a previously described procedure (21, 27).

### Western blot analysis

The detailed procedures have been described previously (25). The primary antibody detecting c-Myc (1:1,000, 5605P), TFF/pS2 (1:1,000, 12419S), cathepsin D (1:1,000, 2284S), and progesterone receptor (PGR; 1:500, 8757S) were from Cell Signaling Technology; Cyclin D1 antibody was from Santa Cruz Biotechnology (1:500, sc-718);  $\beta$ -actin antibody was from Sigma-Aldrich (1:2,000, A1978). Secondary antibodies were from Santa Cruz Biotechnology.

### Quantitative PCR analysis

The procedure was described previously (24); the labeled primers, including MYC (Hs00153708), CCND1 (Hs0076553), TFF1 (Hs00907239), CTSD (Hs00157205), PGR (Hs01556702), SERPINA1 (Hs00165475), and CITED1 (Hs00918445), were obtained from Applied Biosystems.

### Fluorescence microscopy

MCF-7 cells were seeded into 6-well plates at a density of  $8 \times 10^4$  cells per well and then treated with 1 nmol/L estrogen and 10  $\mu$ mol/L tocopherols. After 24 or 48 hours, cells were fixed with 4% paraformaldehyde for 15 minutes at room temperature. Fixed cells were incubated with PBS containing 10% goat serum to block nonspecific binding for 1 hour, and then incubated overnight at 4°C with primary antibodies to 8-hydroxy-2'-deoxyguanosine (8-oxo-dG; 1:100, N45.1; JaiCA/GENOX Corporation), nitrotyrosine (1:100, MAB5404; Millipore), or  $\gamma$ -H2AX (1:100, 2577; Cell Signaling Technology). Samples were then incubated with fluorophore-conjugated secondary antibody (Alexa Fluor 488; Invitrogen) and TO-PRO3 iodide nuclear stain (Invitrogen; 1  $\mu$ mol/L) for 60 and 15 minutes, respectively. The images were taken using a confocal microscope with laser filters at 488 nm for 8-oxo-dG, nitrotyrosine and  $\gamma$ -H2AX, and 644 nm for TO-PRO3. The

fluorescence was analyzed using Image J software (NIH, Bethesda, MD; <http://rsbweb.nih.gov/ij>).

### Statistical analysis

The significance of the difference between control or individual treatment groups and the estrogen-treated groups was evaluated by the Student *t* test or one-way ANOVA followed by the Dunnett test. The estrogen-treated group was compared with the negative control (represented as "a"), and tocopherol groups were compared with the estrogen group (represented as "b"). *P* values < 0.05 were considered significant.

## Results

### Dietary administration of tocopherols inhibits growth of estrogen-supplemented MCF-7 xenografts

We first tested the effects of individual forms of dietary tocopherols on the growth of mammary tumors in the estrogen-induced MCF-7 xenograft model. Nu/nu mice were implanted with estradiol pellets, orthotopically injected with MCF-7 cells, and fed pure 0.2%  $\alpha$ -,  $\gamma$ -,  $\delta$ -tocopherol, or  $\gamma$ -TmT in AIN-93M diet for 5 weeks. No difference in body weight was observed among the different tocopherol treatment groups (Fig. 1B). Starting from day 7 after the MCF-7 cell injection, mammary tumors became palpable, and the volume of mammary tumors was measured two times per week. Mammary tumors continued to grow in the estradiol control group, whereas the tumor growth was inhibited in groups fed with tocopherols (Fig. 1A). As compared with the estrogen-only group, the final tumor volume of  $\alpha$ -,  $\gamma$ -,  $\delta$ -tocopherol, and  $\gamma$ -TmT groups was decreased by 29%

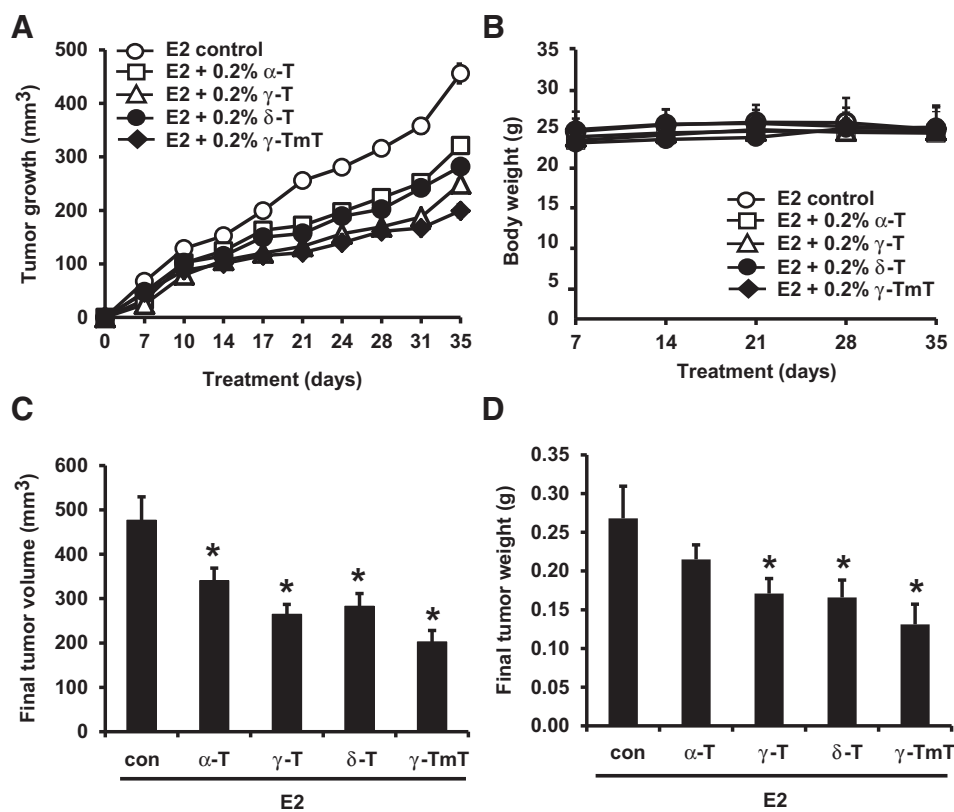
(*P* < 0.05), 45% (*P* < 0.05), 41% (*P* < 0.05), and 58% (*P* < 0.01), respectively (Fig. 1C). As shown in Fig. 1D, tumor weight at termination in  $\alpha$ -,  $\gamma$ -,  $\delta$ -tocopherol, and  $\gamma$ -TmT groups was decreased by 20%, 37% (*P* < 0.05), 39% (*P* < 0.05), and 52% (*P* < 0.05), respectively.

### Measurement of the levels of tocopherols in the serum of MCF-7 xenografted mice fed various tocopherol diets

To understand the bioavailability of dietary tocopherols in the experimental animals, we determined the serum levels of  $\alpha$ -,  $\gamma$ -, and  $\delta$ -tocopherols in the treatment groups. As shown in Table 1, the serum  $\alpha$ -tocopherol level was increased from 11.7  $\mu$ mol/L in estrogen control group to 34.1  $\mu$ mol/L by dietary supplementation with 0.2%  $\alpha$ -tocopherol. Serum  $\gamma$ -tocopherol levels were, as expected, increased from 0.230  $\mu$ mol/L in estrogen control group to 2.523  $\mu$ mol/L by  $\gamma$ -tocopherol and 0.464  $\mu$ mol/L by  $\gamma$ -TmT. Serum  $\delta$ -tocopherol levels were increased from 0.043  $\mu$ mol/L in estrogen control group to 1.479  $\mu$ mol/L by  $\delta$ -tocopherol and 0.148  $\mu$ mol/L by  $\gamma$ -TmT. Interestingly, in animals fed  $\alpha$ -tocopherol, serum  $\gamma$ -tocopherol was considerably decreased.

### Tocopherols downregulate the levels of cyclin D1 and c-Myc in estrogen-treated MCF-7 cells

It has been shown that the expression of cyclin D1 and c-Myc is increased by estrogen-induced cell progression through the G<sub>1</sub> phase of the cell cycle (28). Thus, we investigated whether  $\alpha$ -,  $\gamma$ -,  $\delta$ -tocopherols, and  $\gamma$ -TmT modulate the expression of estrogen-mediated cell proliferation genes, cyclin D1 and c-Myc in MCF-7 cells and MDA-MB-231 cells *in vitro*. As shown in



**Figure 1.**

Tocopherols inhibit estrogen (E2)-induced mammary tumor growth in MCF-7 xenografted mice. Nu/nu mice were implanted with estrogen pellets (0.72 mg). After 2 days, MCF-7 cells ( $5 \times 10^6$  cells/mouse) were injected into the mammary fat pad and the mice fed with control or tocopherol diet for 5 weeks. **A**, Average tumor size at time points for the different treatment groups. **B**, Average body weight at time points for the different treatment groups. **C**, Average tumor volume (mm<sup>3</sup>) at necropsy. **D**, Average tumor weight at necropsy. Data are represented as mean  $\pm$  SE (*n* = 10 per group). Statistical significance, \*, *P* < 0.05; \*\*, *P* < 0.01. *P* values are compared with the estrogen control.

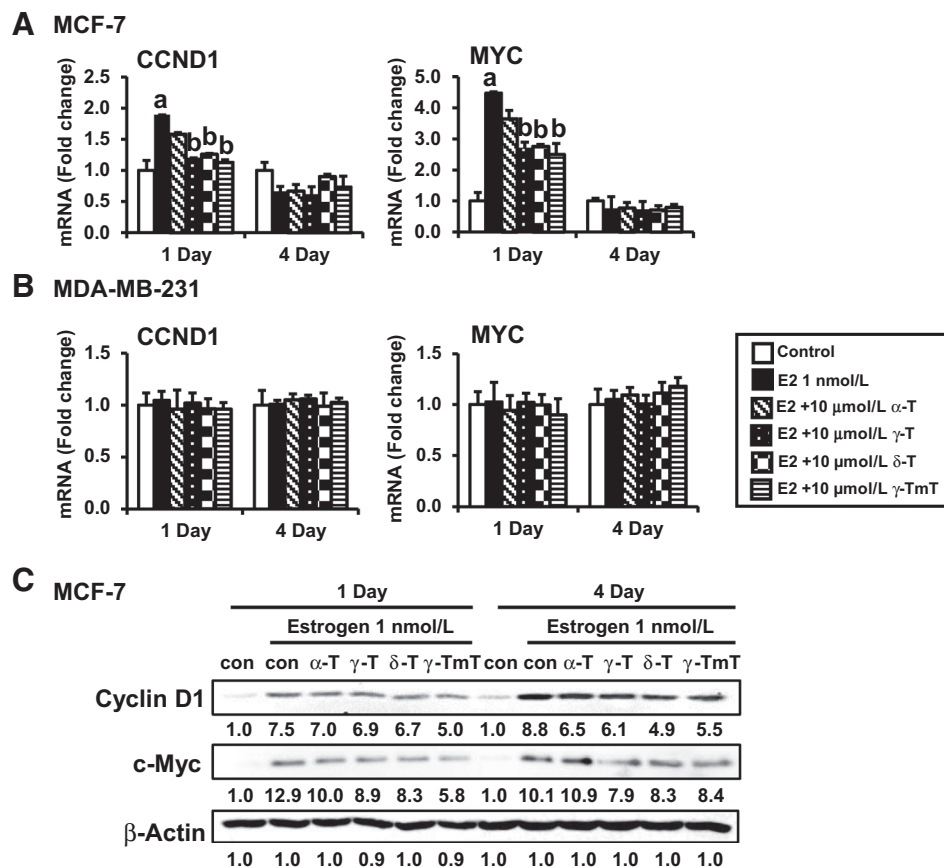
**Table 1.** Analysis of  $\alpha$ -,  $\gamma$ -, and  $\delta$ -tocopherols in the serum of xenografted mice

Treatment	$\alpha$ -Tocopherol ( $\mu\text{mol/L}$ )	$\gamma$ -Tocopherol ( $\mu\text{mol/L}$ )	$\delta$ -Tocopherol ( $\mu\text{mol/L}$ )
E2 control	11.7 $\pm$ 2.4	0.230 $\pm$ 0.088	0.043 $\pm$ 0.041
E2 + 0.2% $\alpha$ -tocopherol	34.1 $\pm$ 9.9*	0.054 $\pm$ 0.055*	0.051 $\pm$ 0.060
E2 + 0.2% $\gamma$ -tocopherol	10.8 $\pm$ 3.3	2.523 $\pm$ 0.497*	0.068 $\pm$ 0.074
E2 + 0.2% $\delta$ -tocopherol	13.1 $\pm$ 3.1	0.176 $\pm$ 0.056	1.479 $\pm$ 0.653*
E2 + 0.2% $\gamma$ -TmT	14.7 $\pm$ 4.6	0.464 $\pm$ 0.126**	0.148 $\pm$ 0.044**

NOTE: The data are presented as mean  $\pm$  SE ( $n = 6$  analyzed serum samples per group). \* $P < 0.01$  and \*\* $P < 0.05$ .  $P$  values are compared with the estrogen (E2) control.

Fig. 2A, treatment with estrogen increased the expression of cyclin D1 and c-Myc mRNAs at day 1, but expression returned to the basal level by day 4. Treatment with  $\gamma$ ,  $\delta$ -tocopherols, and  $\gamma$ -TmT significantly reduced estrogen-induced cyclin D1 and c-Myc mRNA levels on day 1, whereas  $\alpha$ -tocopherol had little or no significant effect on mRNA levels of these genes. In contrast to MCF-7 cells, mRNA levels of cyclin D1 and c-Myc were not

changed by the treatment with estrogen and tocopherols in MDA-MB-231 cells (Fig. 2B). The protein levels of cyclin D1 and c-Myc were increased by estrogen at both day 1 and day 4 time points in MCF-7 cells, as expected.  $\alpha$ -Tocopherol had little or no significant effect on protein levels, whereas  $\gamma$ ,  $\delta$ -tocopherols, and  $\gamma$ -TmT modestly reduced estrogen stimulation of cyclin D1 and c-Myc levels on days 1 and 4 (Fig. 2C).



**Figure 2.**

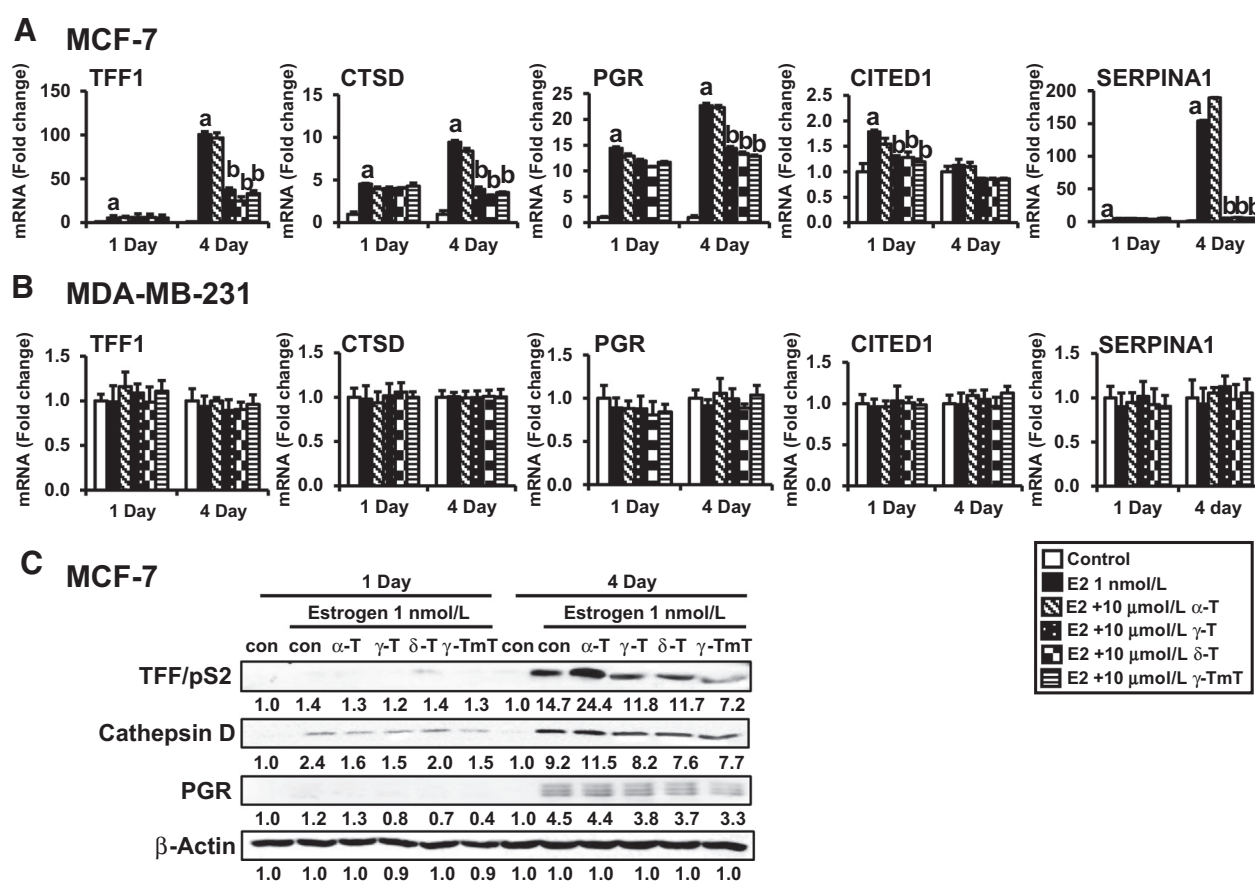
Effects of tocopherols on expression of cell proliferation-related genes encoding cyclin D1 and c-Myc in MCF-7 cells and MDA-MB-231 cells. **A**, qPCR analysis of the effects of tocopherols (10  $\mu\text{mol/L}$ ) on MCF-7 in the presence of estrogen (E2, 1 nmol/L) at 1 and 4 days. MCF-7 cells were plated at a density of  $8 \times 10^4$  cells/mL in 6-well plates and incubated with estrogen for 1 and 4 days. The data are represented as mean  $\pm$  SD.  $n = 3$  independent experiments; <sup>a,b</sup>, significantly different from the control and estrogen control, respectively ( $P < 0.05$ ). Cycle numbers for genes related to cyclin D1 and c-Myc for the estrogen-treated group at day 1 were 20 and 23, respectively. **B**, qPCR analysis of the effects of tocopherols (10  $\mu\text{mol/L}$ ) on MDA-MB-231 cells in the presence of estrogen (E2, 1 nmol/L) at 1 and 4 days. MDA-MB-231 cells were plated at a density of  $1 \times 10^5$  cells/mL in 6-well plates and incubated with estrogen for 1 and 4 days. The data are represented as mean  $\pm$  SD.  $n = 3$  independent experiments; <sup>a,b</sup>, significantly different from the control and estrogen control, respectively ( $P < 0.05$ ). Cycle numbers for genes related to cyclin D1 and c-Myc for the estrogen-treated group at day 1 were 19 and 21, respectively. **C**, Western blot analysis of effects of tocopherols (10  $\mu\text{mol/L}$ ) in MCF-7 in the presence of estrogen (1 nmol/L) at 1 and 4 days. Three independent experiments were performed.  $\beta$ -Actin was used as a loading control.

Protein levels of cyclin D1 and c-Myc were not changed by the treatment with estrogen and tocopherols in MDA-MB-231 cells (Supplementary Fig. S1). These results suggest that inhibition of cell proliferation caused by tocopherols is dependent on the presence of ER.

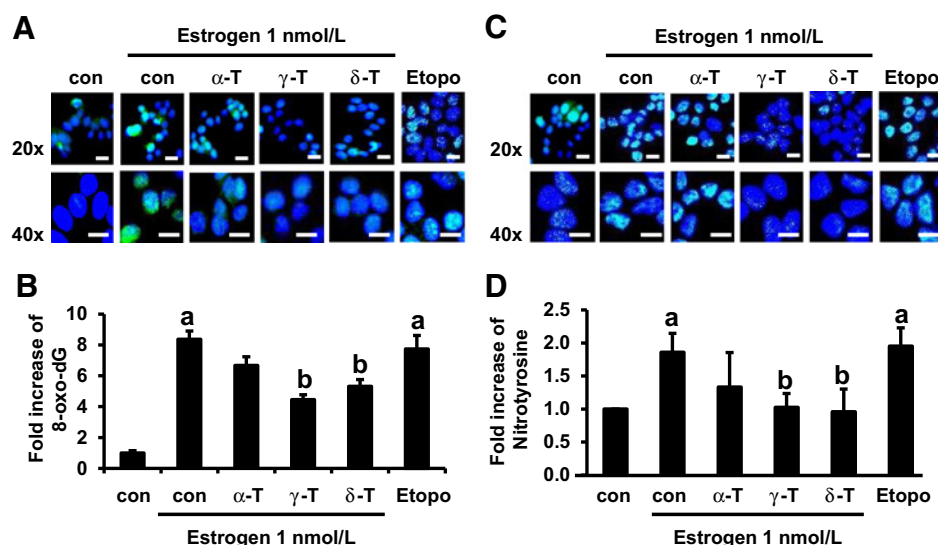
**Tocopherols downregulate the levels of estrogen-responsive genes in estrogen-treated MCF-7 cells**

Because tocopherols have antiproliferative effects in the presence of estrogen, we investigated the effects of individual tocopherols on the modulation of the estrogen-related genes TFF/pS2, cathepsin D, PGR, SERPINA1, and CITED1 in estrogen-treated MCF-7 cells, in comparison with MDA-MB-231 cells. A number of estrogen target genes have been shown to be involved in regulating the proliferation of ER-positive breast

cancer cells and modulating estrogen sensitivity in a gene-specific manner (29–31). As shown in Fig. 3A, the mRNA levels of TFF/pS2, cathepsin D, and PGR were significantly upregulated by estrogen treatment in a time-dependent manner. Treatment with  $\gamma$ -,  $\delta$ -tocopherols, and  $\gamma$ -TmT decreased the levels of these mRNAs at 4 days. Furthermore, mRNA levels of CITED1 and SERPINA1 were increased by estrogen, and this stimulation was inhibited by  $\gamma$ -,  $\delta$ -tocopherols, and  $\gamma$ -TmT.  $\alpha$ -Tocopherol had little or no effect on mRNA levels of estrogen target genes indicated. In contrast to MCF-7 cells, the mRNA levels of TFF/pS2, cathepsin D, PGR, CITED1, and SERPINA1 were unaffected by treatment with estrogen and tocopherols in MDA-MB-231 cells (Fig. 3B). In MCF-7 cells, the protein levels of TFF/pS2, cathepsin D, and PGR were increased by estrogen, and  $\gamma$ -,  $\delta$ -tocopherols, and  $\gamma$ -TmT downregulated estrogen-



**Figure 3.** Effects of tocopherols on expression of estrogen-related genes encoding TFF1, cathepsin D, PGR, SERPINA1, and CITED1 in MCF-7 cells and MDA-MB-231 cells. **A**, qPCR analysis of effects of tocopherols (10  $\mu$ mol/L) in MCF-7 in the presence of estrogen (E2, 1 nmol/L) at 1 and 4 days. MCF-7 cells were plated at a density of  $8 \times 10^4$  cells/mL in 6-well plates and incubated with estrogen for 1 and 4 days. The data are represented as mean  $\pm$  SD.  $n = 3$  independent experiments; <sup>a,b</sup>, significantly different from the control and estrogen control, respectively ( $P < 0.05$ ). Cycle numbers for genes related to TFF, CTSD, PGR, CITED1, and SERPINA1 for estrogen group at day 4 were 16, 18, 24, 31, and 31, respectively. **B**, qPCR analysis of effects of tocopherols (10  $\mu$ mol/L) in MDA-MB-231 cells in the presence of estrogen (E2, 1 nmol/L) at 1 and 4 days. MDA-MB-231 cells were plated at a density of  $1 \times 10^5$  cells/mL in 6-well plates and incubated with estrogen for 1 and 4 days. The data are represented as mean  $\pm$  SD.  $n = 3$  independent experiments; <sup>a,b</sup>, significantly different from the control and estrogen control, respectively ( $P < 0.05$ ). Cycle numbers for genes related to TFF, CTSD, PGR, CITED1, and SERPINA1 for estrogen group at day 4 were 31, 18, 35, 29, and 24, respectively. **C**, Western blot analysis of effects of tocopherols (10  $\mu$ mol/L) in MCF-7 in the presence of estrogen (1 nmol/L) at 1 and 4 days. Three independent experiments were performed.  $\beta$ -Actin was used as a loading control.



**Figure 4.**

Effects of tocopherols on estrogen-induced oxidative and nitrosative stress in MCF-7 cells. **A**, Representative immunofluorescent staining for 8-oxo-dG. Cells were plated at a density of  $8 \times 10^4$  cells/mL in 35-mm confocal plates and incubated with tocopherols (10  $\mu$ mol/L) and estrogen (1 nmol/L) for 48 hours. Scale bars, 20  $\mu$ m. **B**, Quantification of 8-oxo-dG (green) in the cell nucleus (blue), calculated by ImageJ program. Four images with 20 $\times$  magnification from each group were selected randomly and analyzed for the expression of 8-oxo-dG. The data are represented as mean  $\pm$  SD.  $n = 4$  independent experiments; <sup>a,b</sup>, significantly different from the control and estrogen control, respectively ( $P < 0.05$ ). **C**, Representative immunofluorescent staining for nitrotyrosine. Cells were plated at a density of  $8 \times 10^4$  cells/mL in 35-mm confocal plates and incubated with tocopherols (10  $\mu$ mol/L) and estrogen (1 nmol/L) for 24 hours. Scale bars, 20  $\mu$ m. **D**, Quantification of nitrotyrosine (green) in the cell nucleus (blue) by ImageJ program. Four images with 20 $\times$  magnification from each group were selected at random and analyzed for the expression of nitrotyrosine. Etoposide (10  $\mu$ mol/L) is used as a positive control. The data are represented as mean  $\pm$  SD.  $n = 4$  independent experiments; <sup>a,b</sup>, significantly different from the control and estrogen control, respectively ( $P < 0.05$ ).

stimulated levels of these markers. Interestingly,  $\alpha$ -tocopherol had little or no effect on the protein levels and even increased levels of TFF/pS2 and cathepsin D protein on day 4 (Fig. 3C). Protein levels of estrogen-downstream molecules were not changed by the treatment with estrogen and tocopherols in MDA-MB-231 cells (Supplementary Fig. S2).

#### Tocopherols reduce estrogen-induced 8-oxo-dG in MCF-7 cells

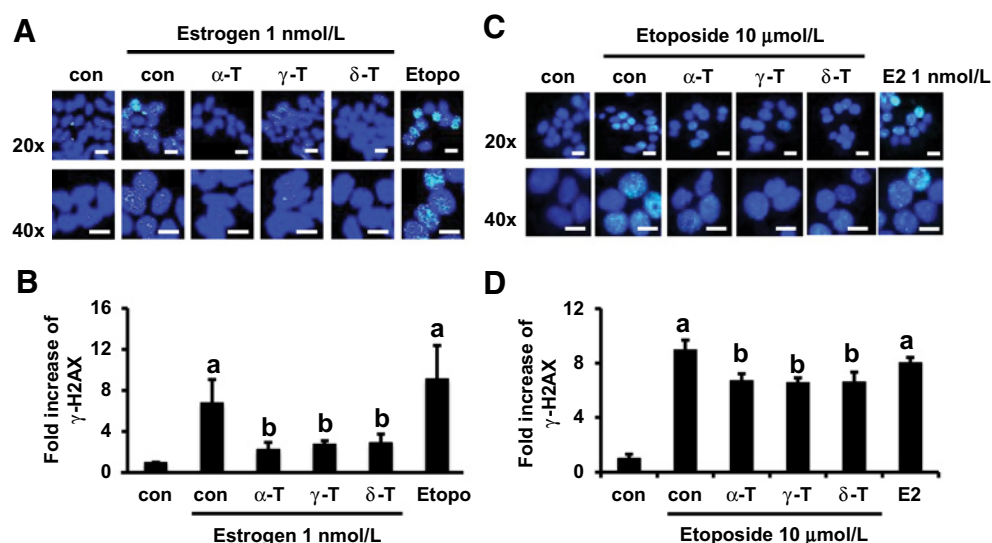
Next, we investigated whether  $\alpha$ -,  $\gamma$ -, and  $\delta$ -tocopherols inhibit estrogen-mediated oxidative stress. 8-oxo-dG is one of the most commonly formed DNA lesions produced in response to estrogen-induced oxidative stress and oxidative DNA damage (32, 33). Therefore, we assessed the effects of tocopherols on 8-oxo-dG levels in MCF-7 cells induced with estrogen. Etoposide was used a positive control for induction of oxidative stress (34). As shown in Fig. 4A, the level of 8-oxo-dG staining was increased by 1 nmol/L estrogen (8.36-fold,  $P < 0.05$ ) compared with untreated control in MCF-7 cells.  $\alpha$ -Tocopherol demonstrated a weak inhibitory effect on the formation of 8-oxo-dG. However, treatment with 10  $\mu$ mol/L  $\gamma$ - and  $\delta$ -tocopherols attenuated the estrogen-induced increase in 8-oxo-dG levels by 47% ( $P < 0.05$ ) and 37% ( $P < 0.05$ ), respectively (Fig. 4B). These results show that tocopherols have a protective effect against estrogen-induced oxidative stress, and that  $\gamma$ - and  $\delta$ -tocopherols are more potent than  $\alpha$ -tocopherol in MCF-7 cells. In contrast to MCF-7 cells, estrogens did not induce the level of 8-oxo-dG in MDA-MB-231 cells (Supplementary Fig. S3A and S3B).

#### Tocopherols reduce estrogen-induced nitrotyrosine in MCF-7 cells

To evaluate the effects of tocopherols on nitrosative stress in estrogen-treated MCF-7 cells, analysis of nitrotyrosine, a marker of nitrosative stress, was performed using immunofluorescence (Fig. 4C). The levels of nitrotyrosine staining in the estrogen-treated group increased by 1.96-fold ( $P < 0.05$ ), compared with the vehicle control. Similar results were obtained in cells treated with etoposide (10  $\mu$ mol/L), which was used as a positive control. Treatment with 10  $\mu$ mol/L  $\gamma$ - and  $\delta$ -tocopherols decreased the levels of nitrotyrosine by 48% ( $P < 0.05$ ) and 52% ( $P < 0.05$ ), whereas  $\alpha$ -tocopherol did not (Fig. 4C and D). In contrast to MCF-7 cells, estrogen did not induce the level of nitrotyrosine in MDA-MB-231 cells (Supplementary Fig. S3C and S3D).

#### Tocopherols reduce estrogen- and etoposide-induced $\gamma$ -H2AX formation in MCF-7 cells

Estrogen induces reactive oxygen and nitrogen species as well as DNA double-stranded breaks (2, 5). Therefore, we examined the inhibitory effect of tocopherols on DNA double-stranded breaks, as measured by the formation of  $\gamma$ -H2AX foci. Histone H2AX has been implicated in the maintenance of genomic stability by participating in the repair of DNA damage (35). H2AX is phosphorylated to its activated form,  $\gamma$ -H2AX, which then rapidly forms foci in response to DNA double-strand breaks resulting in replication arrest (35). As shown in Fig. 5A and B, exposure to estrogen resulted in a 6.81-fold ( $P < 0.05$ ) increase in the number of  $\gamma$ -H2AX foci compared



**Figure 5.**

Effects of tocopherols on estrogen- and etoposide-induced  $\gamma$ -H2AX formation in MCF-7 cells. **A**, Representative immunofluorescent staining for  $\gamma$ -H2AX in estrogen-treated MCF-7 cells. Cells were plated at a density of  $8 \times 10^4$  cells/mL in 35-mm confocal plates and incubated with tocopherols (10  $\mu$ mol/L) and estrogen (1 nmol/L) for 24 hours. Scale bars, 20  $\mu$ m. **B**, Quantification of  $\gamma$ -H2AX (green) in the cell nucleus (blue) by ImageJ program. Four images with 20 $\times$  magnification from each group were selected at random and analyzed for the expression of  $\gamma$ -H2AX. Etoposide (10  $\mu$ mol/L) is used as a positive control. The data are represented as mean  $\pm$  SD.  $n = 4$  independent experiments; <sup>a,b</sup>, significantly different from the control and estrogen control, respectively ( $P < 0.05$ ). **C**, Representative immunofluorescent staining for  $\gamma$ -H2AX in etoposide-treated MCF-7 cells. Cells were plated at a density of  $8 \times 10^4$  cells/mL in 35-mm confocal plates and incubated with tocopherols (10  $\mu$ mol/L) and etoposide (10  $\mu$ mol/L) for 24 hours. Scale bars, 20  $\mu$ m. **D**, Quantification of  $\gamma$ -H2AX (green) in the cell nucleus (blue) by ImageJ program. Two images with 20 $\times$  magnification from each group were selected at random and analyzed for the expression of  $\gamma$ -H2AX. Estrogen (1 nmol/L) is used as a control. The data are represented as mean  $\pm$  SD.  $n = 2$  independent experiments; <sup>a,b</sup>, significantly different from the control and estrogen control, respectively ( $P < 0.05$ ).

with untreated control cells. Etoposide (10  $\mu$ mol/L), which causes high levels of DNA damage (36), significantly increased the number of  $\gamma$ -H2AX foci (9.14-fold,  $P < 0.05$ ) over the vehicle control in MCF-7 cells. Compared with the estrogen control, treatment with 10  $\mu$ mol/L  $\alpha$ -,  $\gamma$ -, and  $\delta$ -tocopherol significantly decreased focus formation by 67% ( $P < 0.05$ ), 60% ( $P < 0.05$ ), and 58% ( $P < 0.05$ ), respectively. In contrast to MCF-7 cells, estrogens did not induce formation of  $\gamma$ -H2AX foci in MDA-MB-231 cells (Supplementary Fig. S4A and S4B). To further investigate whether tocopherols protect DNA damage from stimuli other than estrogen, the formation of  $\gamma$ -H2AX was analyzed in etoposide-stimulated MCF-7 cells (Fig. 5C and D). Treatment with etoposide (10  $\mu$ mol/L) resulted in 8.98-fold ( $P < 0.05$ ) increase in the formation of  $\gamma$ -H2AX foci, compared with the vehicle control. Treatment with  $\alpha$ -,  $\gamma$ -, and  $\delta$ -tocopherol showed a modest decrease of the formation in MCF-7 cells by 25% ( $P < 0.05$ ), 27% ( $P < 0.05$ ), and 26% ( $P < 0.05$ ), respectively. In MDA-MB-231 cells, the formation of  $\gamma$ -H2AX was induced by etoposide (5.24-fold,  $P < 0.05$ ), and it was moderately attenuated by treatment with  $\alpha$ -,  $\gamma$ -, and  $\delta$ -tocopherol (Supplementary Fig. S4C and S4D). Although tocopherols inhibited both estrogen- and etoposide-induced DNA double-stranded breaks, the effects of tocopherols are most significant in estrogen-mediated and ER-dependent events.

## Discussion

The finding that estrogen-induced breast carcinogenesis could at least in part be mediated through generation of free

radicals, oxidative stress and genotoxicity led to considerable interest in use of natural antioxidants to interfere with this process. Much attention was focused on the tocopherols, vitamins with potent antioxidant properties. The clinical trials were carried out with  $\alpha$ -tocopherol, "classical vitamin E," and the most abundant form in human tissues and plasma, but results have been disappointing. Recent epidemiological and preclinical studies have indicated that  $\gamma$ - and  $\delta$ -tocopherols may be more effective because they are more efficient traps for reactive oxygen and nitrogen species (13, 19, 37). To better understand the biological activities of the different forms of tocopherols as potential inhibitors of estrogen-mediated breast cancer, we examined the effects of  $\alpha$ -,  $\gamma$ -,  $\delta$ -tocopherols, and  $\gamma$ -TmT on MCF-7 cells *in vitro* and *in vivo* in xenograft tumors.

Our previous studies have shown that 0.3% and 0.5% dietary levels of a natural mixture,  $\gamma$ -TmT, were effective in inhibiting mammary tumor growth in estrogen-treated MCF-7 xenografted mice (11). To compare relative activities of individual tocopherols, 0.2% of purified  $\alpha$ -,  $\gamma$ -,  $\delta$ -tocopherols as well as  $\gamma$ -TmT in diet were used in our present *in vivo* study. Tocopherols significantly inhibited tumor growth, in the order:  $\gamma$ -TmT >  $\gamma$ -tocopherol >  $\delta$ -tocopherol >  $\alpha$ -tocopherol. Many studies have demonstrated that  $\gamma$ -TmT inhibits carcinogenesis in animal models of colon (23), lung (38), prostate (39, 40), and breast cancer (11). With regard to the relative activity of different forms of tocopherols, several studies reported the superiority of  $\gamma$ - and  $\delta$ -tocopherols to  $\alpha$ -tocopherol:  $\gamma$ - and  $\delta$ -tocopherol had inhibitory effects in azoxymethane-induced colon carcinogenesis (13) and PhIP-induced colon cancer (12);

$\delta$ -tocopherol was more active than  $\gamma$ -tocopherol in inhibiting lung xenograft tumor growth, whereas  $\alpha$ -tocopherol was not effective (37); dietary administration of  $\gamma$ - and  $\delta$ -tocopherols, but not  $\alpha$ -tocopherol, inhibited the NMU-induced mammary tumorigenesis (10).

The greater activity of  $\gamma$ -,  $\delta$ -tocopherol, and  $\gamma$ -TmT in the inhibition of tumor growth corresponded well with its ability to downregulate the expression of cell proliferation and estrogen-related genes. Estrogen stimulates cell proliferation due to activation of ER transcriptional activity and regulation of cell proliferation-related genes such as *c-Myc* and cyclin D1 (28). Previously, we reported that  $\gamma$ - and  $\delta$ -tocopherol inhibited estrogen-induced cell proliferation in both MCF-7 and T47D cells (25). In the present study, estrogen increased the mRNA levels of cyclin D1 and *c-Myc* within 24 hours of exposure in ER-positive MCF-7 cells, but not in ER-negative MDA-MB-231 cells. Treatment with  $\gamma$ -,  $\delta$ -tocopherol, and  $\gamma$ -TmT markedly downregulated this estrogen-induced expression of cyclin D1 and *c-Myc* at both the RNA and protein levels in MCF-7 cells, indicating that the inhibition of cell proliferation by tocopherols is dependent on the ER.

In addition, estrogen significantly upregulated the expression of TFF/pS2, cathepsin D, and PGR in a time-dependent manner in MCF-7 cells, but not in MDA-MB-231 cells. Treatment with  $\gamma$ -,  $\delta$ -tocopherol, and  $\gamma$ -TmT, but not  $\alpha$ -tocopherol, downregulated the mRNA and protein levels of these genes. Progesterone plays an important role in mammary gland pathophysiology, and PGR, TFF/pS2 as well as cathepsin D have been used as indicators of breast cancer progression and as a predictor for tamoxifen resistance of breast tumors (41, 42). Several *in vitro* and *in vivo* studies have reported that a number of natural products have inhibitory activity against ER-positive breast cancers, due to their ability to regulate estrogen-responsive genes (7, 8, 43). Our studies suggest that tocopherol may likewise suppress ER-positive tumor growth by inhibiting the cellular response to estrogen, and that  $\gamma$ -,  $\delta$ -tocopherol, and  $\gamma$ -TmT are more active than  $\alpha$ -tocopherol.

We further determined the inhibitory effects of  $\alpha$ -,  $\gamma$ -, and  $\delta$ -tocopherols on estrogen-mediated oxidative/nitrosative stress as well as DNA damage in MCF-7 cells. Reactive oxygen and nitrogen species promote the initiation and progression of tumor by causing genomic instability, mutations, and deregulated cell proliferation (44). Metabolites of estrogen are implicated in oxidative stress and DNA damage (2). 8-oxo-dG is an oxidized derivative of deoxyguanosine and is a frequent product of DNA oxidation and the cause of mutagenic lesions in DNA. During DNA replication, unrepaired 8-oxo-dG lesions induce G-T transversions, which may contribute to carcinogenesis (45). A number of recent studies have demonstrated that 8-oxo-dG, likely induced by estrogen metabolism-mediated oxidative stress, is formed after estrogen exposure and suggested that 8-oxo-dG may be associated with estrogen-induced breast carcinogenesis (32, 33, 46). In addition, reactive nitrogen species also affect the redox status of cells, which can alter cellular macromolecule structure and function and cause cancer. Elevated levels of nitrotyrosine, a biomarker of nitrosative stress, have been shown to induce DNA damage (47). In agreement with our results, some studies have demonstrated that DNA damage induced by estrogen is dependent on ER: the ER antagonist tamoxifen inhibits estrogen effects in MCF-7 cells, but not in MDA-MB-231 cells (48). In the current study,

DNA double-stranded breaks measured by  $\gamma$ -H2AX formation were inhibited by  $\alpha$ -,  $\gamma$ -, and  $\delta$ -tocopherols in estrogen-stimulated MCF-7 cells. Estrogen-induced 8-oxo-dG and nitrotyrosine levels were also decreased by  $\gamma$ - and  $\delta$ -tocopherols, but not by  $\alpha$ -tocopherol in MCF-7 cells (Fig. 4). Therefore, overall reduction of estrogen-induced oxidative and nitrosative stress as well as DNA damage by  $\gamma$ - and  $\delta$ -tocopherol treatment may contribute to lowering the risk of mammary carcinogenesis via ER-dependent pathway.

Our study found that administration of 0.2%  $\gamma$ -,  $\delta$ -tocopherol, and  $\gamma$ -TmT in the diet significantly inhibited tumor growth and final tumor weight in an estrogen-induced MCF-7 xenograft model. *In vitro* studies showed that  $\gamma$ -,  $\delta$ -tocopherol, and  $\gamma$ -TmT have the ability to protect cells against estrogen-induced effects by regulating the expression of cell proliferation and estrogen-related genes and inhibiting oxidative and nitrosative stress as well as DNA damage in MCF-7 cells. The ineffectiveness of  $\alpha$ -tocopherol was an important finding and could be due to the presence of the 5-methyl group on the chromanol ring, which is less active in quenching reactive oxygen and nitrogen species than  $\gamma$ - and  $\delta$ -tocopherols with their 5-position unmethylated. The difference in the chromanol ring structure may, in part, contribute to different antiestrogenic activities of each form. Natural tocopherols, such as  $\gamma$ - and  $\delta$ -tocopherols and  $\gamma$ -tocopherol-rich mixture, are safe and effective dietary factors useful for the prevention and treatment of estrogen-mediated breast cancer. Previous clinical trials with  $\alpha$ -tocopherol have proved negative in protection against cancer. The current results suggest a mechanistic explanation and that further tests of  $\gamma$ -,  $\delta$ -tocopherol, and  $\gamma$ -TmT in estrogen-induced or stimulated breast cancers are warranted.

#### Disclosure of Potential Conflicts of Interest

J. Wahler is Human Health Scientist at Research Institute for Fragrance Materials. No potential conflicts of interest were disclosed by the other authors.

#### Disclaimer

The content is solely the responsibility of the authors and does not necessarily represent the official views of the NIH.

#### Authors' Contributions

**Conception and design:** M.J. Bak, S.D. Gupta, J. Wahler, C.S. Yang, N. Suh  
**Development of methodology:** M.J. Bak, S.D. Gupta, J. Wahler, H.J. Lee, N. Suh  
**Acquisition of data (provided animals, acquired and managed patients, provided facilities, etc.):** M.J. Bak, S.D. Gupta, J. Wahler, H.J. Lee, X. Li, M.-J. Lee, C.S. Yang  
**Analysis and interpretation of data (e.g., statistical analysis, biostatistics, computational analysis):** M.J. Bak, S.D. Gupta, H.J. Lee, M.-J. Lee, C.S. Yang, N. Suh  
**Writing, review, and/or revision of the manuscript:** M.J. Bak, S.D. Gupta, M.-J. Lee, C.S. Yang, N. Suh  
**Administrative, technical, or material support (i.e., reporting or organizing data, constructing databases):** M.J. Bak, M.-J. Lee, N. Suh  
**Study supervision:** N. Suh

#### Acknowledgments

The authors would like to thank Dr. Philip Furmanski for his helpful suggestions.

#### Grant Support

Research reported in this article was supported by the National Center for Complementary and Integrative Health of the NIH under Award Number R01 AT007036, the National Institute of Environmental Health Sciences



grant ES005022, Charles and Johanna Busch Memorial Fund at Rutgers University, the Trustees Research Fellowship Program at Rutgers, and the New Jersey Commission on Cancer Research Postdoctoral Fellowship to Soumyasri Das Gupta.

The costs of publication of this article were defrayed in part by the payment of page charges. This article must therefore be hereby marked

*advertisement* in accordance with 18 U.S.C. Section 1734 solely to indicate this fact.

Received August 30, 2016; revised December 24, 2016; accepted January 3, 2017; published OnlineFirst January 17, 2017.

## References

1. Yager JD, Davidson NE. Estrogen carcinogenesis in breast cancer. *N Engl J Med* 2006;354:270–82.
2. Williamson LM, Lees-Miller SP. Estrogen receptor alpha-mediated transcription induces cell cycle-dependent DNA double-strand breaks. *Carcinogenesis* 2011;32:279–85.
3. Yue W, Yager JD, Wang JP, Jupe ER, Santen RJ. Estrogen receptor-dependent and independent mechanisms of breast cancer carcinogenesis. *Steroids* 2013;78:161–70.
4. Cribb AE, Knight MJ, Dryer D, Guernsey J, Hender K, Tesch M, et al. Role of polymorphic human cytochrome P450 enzymes in estrone oxidation. *Cancer Epidemiol Biomarkers Prev* 2006;15:551–8.
5. Belous AR, Hachey DL, Dawling S, Roodi N, Parl FF. Cytochrome P450 1B1-mediated estrogen metabolism results in estrogen-deoxyribonucleoside adduct formation. *Cancer Res* 2007;67:812–7.
6. Bak MJ, Das Gupta S, Wahler J, Suh N. Role of dietary bioactive natural products in estrogen receptor-positive breast cancer. *Semin Cancer Biol* 2016;40–41:170–91.
7. Shao ZM, Shen ZZ, Liu CH, Sartippour MR, Go VL, Heber D, et al. Curcumin exerts multiple suppressive effects on human breast carcinoma cells. *Int J Cancer* 2002;98:234–40.
8. Meng Q, Yuan F, Goldberg ID, Rosen EM, Auburn K, Fan S. Indole-3-carbinol is a negative regulator of estrogen receptor-alpha signaling in human tumor cells. *J Nutr* 2000;130:2927–31.
9. Sreeja S, Santhosh Kumar TR, Lakshmi BS. Pomegranate extract demonstrate a selective estrogen receptor modulator profile in human tumor cell lines and in vivo models of estrogen deprivation. *J Nutr Biochem* 2012;23:725–32.
10. Smolarek AK, So JY, Burgess B, Kong AN, Reuhl K, Lin Y, et al. Dietary administration of delta- and gamma-tocopherol inhibits tumorigenesis in the animal model of estrogen receptor-positive, but not HER-2 breast cancer. *Cancer Prev Res (Phila)* 2012;5:1310–20.
11. Das Gupta S, Sae-tan S, Wahler J, So JY, Bak MJ, Cheng LC, et al. Dietary gamma-tocopherol-rich mixture inhibits estrogen-induced mammary tumorigenesis by modulating estrogen metabolism, antioxidant response, and PPARgamma. *Cancer Prev Res (Phila)* 2015;8:807–16.
12. Chen JX, Liu A, Lee MJ, Wang H, Yu S, Chi E, et al. delta- and gamma-tocopherols inhibit pHP/DSS-induced colon carcinogenesis by protection against early cellular and DNA damages. *Mol Carcinog* 2017;56:172–83.
13. Guan F, Li G, Liu AB, Lee MJ, Yang Z, Chen YK, et al. delta- and gamma-tocopherols, but not alpha-tocopherol, inhibit colon carcinogenesis in azoxymethane-treated F344 rats. *Cancer Prev Res (Phila)* 2012;5:644–54.
14. Constantinou C, Papas A, Constantinou AI. Vitamin E and cancer: An insight into the anticancer activities of vitamin E isomers and analogs. *Int J Cancer* 2008;123:739–52.
15. Li G, Lee MJ, Liu AB, Yang Z, Lin Y, Shih WJ, et al. The antioxidant and anti-inflammatory activities of tocopherols are independent of Nrf2 in mice. *Free Radic Biol Med* 2012;52:1151–8.
16. Yoshida Y, Niki E, Noguchi N. Comparative study on the action of tocopherols and tocotrienols as antioxidant: Chemical and physical effects. *Chem Phys Lipids* 2003;123:63–75.
17. Jiang Q, Christen S, Shigenaga MK, Ames BN. gamma-tocopherol, the major form of vitamin E in the US diet, deserves more attention. *Am J Clin Nutr* 2001;74:714–22.
18. Lippman SM, Klein EA, Goodman PJ, Lucia MS, Thompson IM, Ford LG, et al. Effect of selenium and vitamin E on risk of prostate cancer and other cancers: The Selenium and Vitamin E Cancer Prevention Trial (SELECT). *JAMA* 2009;301:39–51.
19. Das Gupta S, Suh N. Tocopherols in cancer: An update. *Mol Nutr Food Res* 2016;60:1354–63.
20. Gaziano JM, Glynn RJ, Christen WG, Kurth T, Belanger C, MacFadyen J, et al. Vitamins E and C in the prevention of prostate and total cancer in men: The Physicians' Health Study II randomized controlled trial. *JAMA* 2009;301:52–62.
21. Das Gupta S, So JY, Wall B, Wahler J, Smolarek AK, Sae-Tan S, et al. Tocopherols inhibit oxidative and nitrosative stress in estrogen-induced early mammary hyperplasia in ACI rats. *Mol Carcinog* 2015;54:916–25.
22. Suh N, Paul S, Lee HJ, Ji Y, Lee MJ, Yang CS, et al. Mixed tocopherols inhibit N-methyl-N-nitrosourea-induced mammary tumor growth in rats. *Nutr Cancer* 2007;59:76–81.
23. Ju J, Hao X, Lee MJ, Lambert JD, Lu G, Xiao H, et al. A gamma-tocopherol-rich mixture of tocopherols inhibits colon inflammation and carcinogenesis in azoxymethane and dextran sulfate sodium-treated mice. *Cancer Prev Res (Phila)* 2009;2:143–52.
24. Lee HJ, Liu H, Goodman C, Ji Y, Maehr H, Uskokovic M, et al. Gene expression profiling changes induced by a novel Gemini Vitamin D derivative during the progression of breast cancer. *Biochem Pharmacol* 2006;72:332–43.
25. Lee HJ, Ju J, Paul S, So JY, DeCastro A, Smolarek A, et al. Mixed tocopherols prevent mammary tumorigenesis by inhibiting estrogen action and activating PPAR-gamma. *Clin Cancer Res* 2009;15:4242–9.
26. Smolarek AK, So JY, Thomas PE, Lee HJ, Paul S, Dombrowski A, et al. Dietary tocopherols inhibit cell proliferation, regulate expression of ERalpha, PPARgamma, and Nrf2, and decrease serum inflammatory markers during the development of mammary hyperplasia. *Mol Carcinog* 2013;52:514–25.
27. Zhao Y, Lee MJ, Cheung C, Ju JH, Chen YK, Liu B, et al. Analysis of multiple metabolites of tocopherols and tocotrienols in mice and humans. *J Agric Food Chem* 2010;58:4844–52.
28. Mawson A, Lai A, Carroll JS, Sergio CM, Mitchell CJ, Sarcevic B. Estrogen and insulin/IGF-1 cooperatively stimulate cell cycle progression in MCF-7 breast cancer cells through differential regulation of c-Myc and cyclin D1. *Mol Cell Endocrinol* 2005;229:161–73.
29. Lee YM, Kim JB, Bae JH, Lee JS, Kim PS, Jang HH, et al. Estrogen-like activity of aqueous extract from *Agrimonia pilosa* Ledeb. in MCF-7 cells. *BMC Complement Altern Med* 2012;12:260.
30. Chan HJ, Li H, Liu Z, Yuan YC, Mortimer J, Chen S. SERPINA1 is a direct estrogen receptor target gene and a predictor of survival in breast cancer patients. *Oncotarget* 2015;6:25815–27.
31. Yahata T, Shao W, Endoh H, Hur J, Coser KR, Sun H, et al. Selective coactivation of estrogen-dependent transcription by CITED1 CBP/p300-binding protein. *Genes Dev* 2001;15:2598–612.
32. Singh B, Chatterjee A, Ronghe AM, Bhat NK, Bhat HK. Antioxidant-mediated up-regulation of OGG1 via NRF2 induction is associated with inhibition of oxidative DNA damage in estrogen-induced breast cancer. *BMC Cancer* 2013;13:253.
33. Montano MM, Chaplin LJ, Deng H, Mesia-Vela S, Gaikwad N, Zahid M, et al. Protective roles of quinone reductase and tamoxifen against estrogen-induced mammary tumorigenesis. *Oncogene* 2007;26:3587–90.
34. Leung T, Rajendran R, Singh S, Garva R, Krstic-Demonacos M, Demonacos C. Cytochrome P450 2E1 (CYP2E1) regulates the response to oxidative stress and migration of breast cancer cells. *Breast Cancer Res* 2013;15:R107.
35. Tu WZ, Li B, Huang B, Wang Y, Liu XD, Guan H, et al. gammaH2AX foci formation in the absence of DNA damage: Mitotic H2AX phosphorylation is mediated by the DNA-PKcs/CHK2 pathway. *FEBS Lett* 2013;587:3437–43.
36. Wallis SA, Zhou R, Liliemark E. DNA damage induced by etoposide; a comparison of two different methods for determination of strand breaks in DNA. *Cancer Lett* 1996;105:153–9.
37. Li GX, Lee MJ, Liu AB, Yang Z, Lin Y, Shih WJ, et al. delta-tocopherol is more active than alpha- or gamma-tocopherol in inhibiting lung tumorigenesis in vivo. *Cancer Prev Res (Phila)* 2011;4:404–13.

38. Lu G, Xiao H, Li GX, Picinich SC, Chen YK, Liu A, et al. A gamma-tocopherol-rich mixture of tocopherols inhibits chemically induced lung tumorigenesis in A/J mice and xenograft tumor growth. *Carcinogenesis* 2010;31:687–94.
39. Zheng X, Cui XX, Khor TO, Huang Y, Dipaola RS, Goodin S, et al. Inhibitory Effect of a gamma-tocopherol-rich mixture of tocopherols on the formation and growth of LNCaP prostate tumors in immunodeficient mice. *Cancers* 2011;3:3762–72.
40. Chen JX, Li G, Wang H, Liu A, Lee MJ, Reuhl K, et al. Dietary tocopherols inhibit PhIP-induced prostate carcinogenesis in CYP1A-humanized mice. *Cancer Lett* 2016;371:71–8.
41. Yao Y, Zhou Q. A novel antiestrogen agent Shikonin inhibits estrogen-dependent gene transcription in human breast cancer cells. *Breast Cancer Res Treat* 2010;121:233–40.
42. Johnston SR, Saccani-Jotti G, Smith IE, Salter J, Newby J, Coppen M, et al. Changes in estrogen receptor, progesterone receptor, and pS2 expression in tamoxifen-resistant human breast cancer. *Cancer Res* 1995;55:3331–8.
43. Devipriya S, Ganapathy V, Shyamaladevi CS. Suppression of tumor growth and invasion in 9,10 dimethyl benz(a) anthracene induced mammary carcinoma by the plant bioflavonoid quercetin. *Chem Biol Interact* 2006;162:106–13.
44. Schumacker PT. Reactive oxygen species in cancer cells: Live by the sword, die by the sword. *Cancer Cell* 2006;10:175–6.
45. Arsova-Sarafinowska Z, Eken A, Matevska N, Erdem O, Sayal A, Savaser A, et al. Increased oxidative/nitrosative stress and decreased antioxidant enzyme activities in prostate cancer. *Clin Biochem* 2009;42:1228–35.
46. Singh B, Bhat NK, Bhat HK. Partial inhibition of estrogen-induced mammary carcinogenesis in rats by tamoxifen: Balance between oxidant stress and estrogen responsiveness. *PLoS One* 2011;6:e25125.
47. Roy D, Cai Q, Felty Q, Narayan S. Estrogen-induced generation of reactive oxygen and nitrogen species, gene damage, and estrogen-dependent cancers. *J Toxicol Environ Health B Crit Rev* 2007;10:235–57.
48. Mobley JA, Brueggemeier RW. Estrogen receptor-mediated regulation of oxidative stress and DNA damage in breast cancer. *Carcinogenesis* 2004;25:3–9.