

**Julie W. Mertens**

Laboratory of Immunology, Department of Biomedical Sciences,  
Institute of Tropical Medicine,  
Antwerp, Belgium

**Makhtar Camara**

Laboratory of Immunology, Department of Bacteriology-Virology,  
Centre Hospitalier Universitaire Le Dantec,  
Cheikh Anta Diop University,  
Dakar, Senegal

**Moussa Seydi**

Department of Infectious Diseases, Centre Hospitalier Universitaire Fann,  
Cheikh Anta Diop University,  
Dakar, Senegal

**Tandakha N. Dieye**

Laboratory of Immunology, Department of Bacteriology-Virology,  
Centre Hospitalier Universitaire Le Dantec,  
Cheikh Anta Diop University,  
Dakar, Senegal

**Souleymane Mboup**

Laboratory of Immunology, Department of Bacteriology-Virology,  
Centre Hospitalier Universitaire Le Dantec,  
Cheikh Anta Diop University,  
Dakar, Senegal

**Christian Demanet**

HLA and Molecular Hematology Laboratory,  
Universitair Ziekenhuis Brussel (UZ Brussel),  
Brussels, Belgium

**Luc Kestens**

Laboratory of Immunology, Department of Biomedical Sciences,  
Institute of Tropical Medicine,  
Antwerp, Belgium  
Department of Biomedical Sciences, University of Antwerp,  
Antwerp, Belgium

**Conflict-of-interest disclosure:** The authors declare no competing financial interests.

**Correspondence:** Wim Jennes, Laboratory of Immunology, Department of Biomedical Sciences, Institute of Tropical Medicine, Nationalestraat 155, 2000 Antwerp, Belgium; e-mail: wjennes@itg.be.

**References**

- Jennes W, Verheyden S, Mertens JW, et al. Inhibitory KIR/HLA incompatibility between sexual partners confers protection against HIV-1 transmission. *Blood*. 2013;121(7):1157-1164.
- Elliott JM, Yokoyama WM. Unifying concepts of MHC-dependent natural killer cell education. *Trends Immunol*. 2011;32(8):364-372.
- Moretta L, Locatelli F, Pende D, Marcenaro E, Mingari MC, Moretta A. Killer Ig-like receptor-mediated control of natural killer cell alloreactivity in haploidentical hematopoietic stem cell transplantation. *Blood*. 2011;117(3):764-771.
- Velardi A, Ruggeri L, Mancusi A. Killer-cell immunoglobulin-like receptors reactivity and outcome of stem cell transplant. *Curr Opin Hematol*. 2012;19(4):319-323.
- Perneger TV. What's wrong with Bonferroni adjustments. *BMJ*. 1998;316(7139):1236-1238.
- Streiner DL, Norman GR. Correction for multiple testing: is there a resolution? *Chest*. 2011;140(1):16-18.

© 2013 by The American Society of Hematology

**To the editor:****Molecular classification of mature aggressive B-cell lymphoma using digital multiplexed gene expression on formalin-fixed paraffin-embedded biopsy specimens**

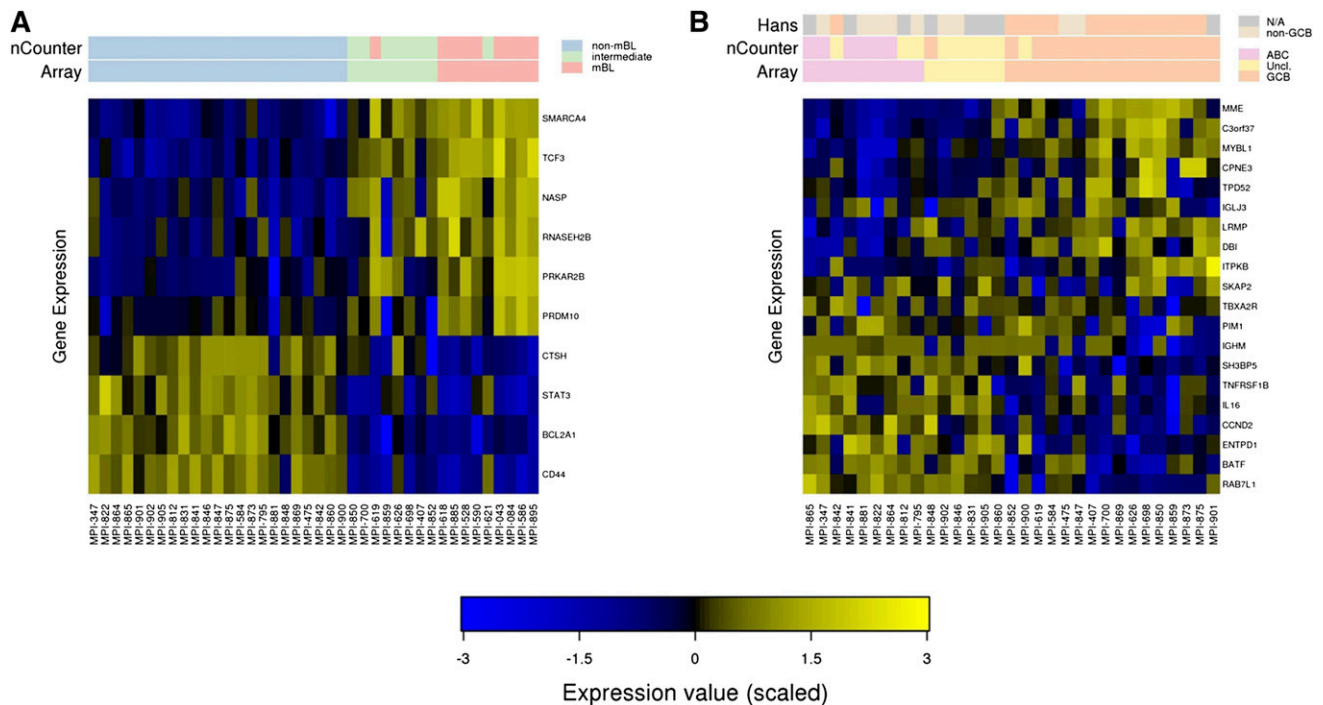
The most frequent mature aggressive B-cell lymphomas are diffuse large B-cell lymphoma (DLBCL) and Burkitt lymphoma (BL). Patients suffering from molecularly defined BL (mBL) but treated with a regimen developed for DLBCL show an unfavorable outcome compared with mBL treated with chemotherapy regimens for BL.<sup>1</sup> Distinguishing BL from DLBCL by conventional histopathology is challenging in lymphomas that have features common to both diseases (aggressive B-cell lymphoma unclassifiable with features of DLBCL and BL [intermediates]).<sup>2</sup> Moreover, DLBCLs are a heterogeneous group of lymphomas comprising distinct molecular subtypes: the activated B-cell–like (ABC), the germinal center B-cell–like (GCB), and the unclassifiable subtype as defined by gene expression profiling (GEP).<sup>3</sup> Attempts to replace GEP with techniques applicable to formalin-fixed paraffin-embedded (FFPE) tissue led to algorithms for immunohistochemical staining (IHS).<sup>4</sup> Disappointingly, the algorithms yielded conflicting results with respect to their prognostic potential, raising concerns about their validity.<sup>5</sup> Furthermore, IHS algorithms did not provide a fully resolved classification: they did not identify mBL nor did they separate ABC from unclassified DLBCLs.<sup>4</sup>

We used digital multiplexed gene expression (DMGE) with FFPE-derived RNA to classify aggressive B-cell lymphomas. Our assay comprised only 30 genes (10 for the detection of mBL and 20 for the detection of ABC and GCB). We chose these genes by reanalysis of the microarray data reported in a previous study.<sup>6</sup> A detailed description of the methods is provided in the supplemental Materials on the *Blood* website. Thirty-nine samples from mature aggressive B-cell lymphomas were analyzed using DMGE (nCounter;

NanoString Technologies, Seattle, WA; see supplemental Materials for detailed methods) of FFPE- and fresh-frozen–derived RNA. All cases were previously characterized by the Molecular Mechanisms of Malignant Lymphoma<sup>6</sup> consortium using the Affymetrix GeneChip technology (gold standard of classification).

For FFPE-derived RNA, the classification of only 2 of 39 samples (5%) differed, when comparing DMGE-based predictions with the gold standard (array) (Figure 1A). The 2 divergent classifications were 1 case of mBL that was classified as intermediate and 1 case of an intermediate that was classified as mBL [both lymphomas carried a t(8;14) translocation]. No major mistake (a classification of a non-mBL as mBL or vice versa) was observed. This performance is comparable with that of DMGE data from fresh-frozen tissue blocks (supplemental Materials). Compared with the array, 5 of 31 (16%) non-mBL/DLBCLs received different molecular classifications using DMGE and FFPE-derived RNA (Figure 1B). All discrepancies comprised lymphomas that switched between the unclassified and ABC or unclassified and GCB labels. Again, no major mistake (a classification of a GCB as an ABC or vice versa) was observed. In contrast, the Hans IHS algorithm<sup>7</sup> led to major mistakes (2 GCB classified as non-GCB and 1 ABC as GCB; Figure 1B).

GEP-based molecular classification of mature aggressive B-cell lymphomas is possible with FFPE-derived RNA at a reasonable cost (<100 Euro) and within a reasonable period of time (24 hours). To the best of our knowledge, this is the first molecular method for identifying mBL among mature aggressive B-cell lymphomas using FFPE-derived RNA.



**Figure 1. Digital multiplexed gene expression of mature aggressive B-cell lymphomas.** (A) Molecular classification of mature aggressive B-cell lymphomas as mBL, non-mBL, and intermediates using FFPE-derived RNA. The expression of the genes is color coded such that high expression is shown in yellow and low expression in blue. The molecular labels assigned by the array using fresh-frozen RNA and DMGE (nCounter) assay using FFPE-derived RNA are indicated as colored labels in the top bars. (B) Molecular classification of non-mBL using FFPE-derived RNA. The classification according to IHS (Hans), the array using fresh-frozen RNA and the DMGE assay using FFPE-derived RNA are indicated as colored labels in the top bars.

#### Neus Masqué-Soler

Department of Pathology, Hematopathology Section and Lymph Node Registry,  
University Hospital Schleswig-Holstein,  
Campus Kiel/Christian-Albrecht University,  
Kiel, Germany

#### Monika Szczepanowski

Department of Pathology, Hematopathology Section and Lymph Node Registry,  
University Hospital Schleswig-Holstein,  
Campus Kiel/Christian-Albrecht University,  
Kiel, Germany

#### Christian W. Kohler

Institute of Functional Genomics, University of Regensburg,  
Regensburg, Germany

#### Rainer Spang

Institute of Functional Genomics, University of Regensburg,  
Regensburg, Germany

#### Wolfram Klapper

Department of Pathology, Hematopathology Section and Lymph Node Registry,  
University Hospital Schleswig-Holstein,  
Campus Kiel/Christian-Albrecht University,  
Kiel, Germany

N.M.-S., M.S., and C.W.K. contributed equally to this work.

The online version of this article contains a data supplement.

**Acknowledgments:** The authors thank Olivera Batic for excellent technical support.

This work was supported by the KinderKrebsinitiative Buchholz/Holm-Seppensen, an intramural grant from the Medical Faculty of the University of Kiel to W.K. (grant F343911), and the Molecular Mechanisms of Malignant Lymphoma with MYC-Dysregulation - A System Biology Approach for Genetics, Evolution, Signaling and Clinical Care (MMML-MYC-SYS) funded by the German Ministry of Health (grant 0316166).

**Contribution:** N.M.-S. and M.S. performed DMGE analysis; C.W.K. and R.S. performed bioinformatic analysis; W.K. designed research and provided funding; and N.M.-S., M.S., C.W.K., R.S., and W.K. were involved in the writing of the manuscript and approved the final manuscript.

**Conflict of interest:** The authors declare no competing financial interests.

**Correspondence:** Wolfram Klapper, Department of Pathology, Hematopathology Section and Lymph Node Registry, University Hospital Schleswig-Holstein, Campus Kiel/Christian-Albrecht University, Kiel, Arnold-Heller-Str 3, Haus 14, 24105 Kiel, Germany; e-mail: wklapper@path.uni-kiel.de.

## References

- Dave SS, Fu K, Wright GW, et al; Lymphoma/Leukemia Molecular Profiling Project. Molecular diagnosis of Burkitt's lymphoma. *N Engl J Med*. 2006;354(23):2431-2442.
- Swerdlow SH, Campo E, Harris N, et al. WHO Classification of Tumors of the Haematopoietic and Lymphoid Tissues. Lyon, France: IARC; 2008
- Alizadeh AA, Eisen MB, Davis RE, et al. Distinct types of diffuse large B-cell lymphoma identified by gene expression profiling. *Nature*. 2000;403(6769):503-511.
- Meyer PN, Fu K, Greiner TC, et al. Immunohistochemical methods for predicting cell of origin and survival in patients with diffuse large B-cell lymphoma treated with rituximab. *J Clin Oncol*. 2011;29(2):200-207.
- Salles G, de Jong D, Xie W, et al. Prognostic significance of immunohistochemical biomarkers in diffuse large B-cell lymphoma: a study from the Lunenburg Lymphoma Biomarker Consortium. *Blood*. 2011;117(26):7070-7078.
- Klapper W, Kreuz M, Kohler CW, et al; Molecular Mechanisms in Malignant Lymphomas Network Project of the Deutsche Krebshilfe. Patient age at diagnosis is associated with the molecular characteristics of diffuse large B-cell lymphoma. *Blood*. 2012;119(8):1882-1887.
- Hans CP, Weisenburger DD, Greiner TC, et al. Confirmation of the molecular classification of diffuse large B-cell lymphoma by immunohistochemistry using a tissue microarray. *Blood*. 2004;103(1):275-282.