

Effect of Lateral Tilt Angle on the Volume of the Abdominal Aorta and Inferior Vena Cava in Pregnant and Nonpregnant Women Determined by Magnetic Resonance Imaging

Hideyuki Higuchi, M.D., Shunichi Takagi, M.D., Kan Zhang, M.D., Ikue Furui, M.D., Makoto Ozaki, M.D.

ABSTRACT

Background: Left-lateral tilt position is used to reduce assumed aortocaval compression by the pregnant uterus.

Methods: Magnetic resonance images of 10 singleton parturients at full term and 10 healthy nonpregnant women were obtained for measurement of the abdominal aorta and inferior vena cava volume between the L1–L2 disk and L3–L4 disk levels in both the supine and left-lateral tilt positions (15°, 30°, and 45°) maintained by insertion of a 1.5-m-long polyethylene foam placed under the right side of the parturient's body.

Results: Aortic volume did not differ significantly between parturients and nonpregnant women in the supine position (12.7 ± 2.0 vs. 12.6 ± 2.1 ml, mean \pm SD; mean difference, -0.1 ; 95% confidence interval [CI], -2.0 to 1.9 ; $P = 0.95$). Inferior vena cava volume in the supine position was significantly lower in parturients than in nonpregnant women (3.2 ± 3.4 vs. 17.5 ± 7.8 ml; mean difference, 14.3 ; 95% CI, 8.3 – 20.2 ; $P < 0.001$). Aortic volume in parturients did not differ among left-lateral tilt positions. Inferior vena cava volume in the parturients was not increased at 15° (3.0 ± 2.1 ml; mean difference, -0.2 ; 95% CI, -1.5 to 1.2 ; $P > 0.99$), but was significantly increased at 30° (11.5 ± 8.6 ml; mean difference, 8.3 ; 95% CI, 2.3 – 14.2 ; $P = 0.009$) and 45° (10.9 ± 6.8 ml; mean difference, 7.7 ; 95% CI, 2.2 – 13.1 ; $P = 0.015$).

Conclusions: In parturients, the aorta was not compressed, and a 15° left-lateral tilt position did not effectively reduce inferior vena cava compression. (ANESTHESIOLOGY 2015; 122:286-93)

COMPRESSION of the inferior vena cava (IVC) during late pregnancy when parturients are in the supine position has been well recognized as a possible cause of supine hypotensive syndrome since the report of Howard *et al.* in 1953.¹ Angiograph and magnetic resonance imaging (MRI) have directly demonstrated that IVC is almost completely compressed by the gravid uterus in the supine position and that IVC compression is reduced in the left-lateral position.^{2–4} Further, in the late 1960s, Bieniarz *et al.*^{5–8} energetically performed angiography and simultaneously measured brachial artery and femoral artery pressure of pregnant women, and advocated that, similar to the IVC, the abdominal aorta and its branches are compressed by the gravid uterus when parturients are in the supine position. Since then, compression of the abdominal aorta by the gravid uterus has been widely accepted among anesthesiologists and obstetricians, and both IVC compression and aortic compression together are referred to as aortocaval compression.^{9,10}

Aortocaval compression can cause hemodynamic disturbances and uteroplacental hypoperfusion in parturients. Because the left-lateral position is impractical in clinical situations, a left-lateral tilt position is often promoted to reduce

What We Already Know about This Topic

- Left-lateral tilt position is used to reduce assumed aortocaval compression by the pregnant uterus in the supine position, but this assumption has not been critically tested

What This Article Tells Us That Is New

- In 10 singleton parturients at term without anesthesia, the aorta at the mid- to upper lumbar disk levels was not compressed, although the inferior vena cava was
- Tilt of 30°, but not 15° partially relieved the inferior vena caval compression

aortocaval compression by the pregnant uterus.^{11–17} The recommended tilt angle is reported to be 15° following spinal anesthesia for cesarean section^{12–15} and 30° during resuscitation in pregnant women,^{16,17} although these recommended angles remain controversial.^{18–21} The assumption is that the left-lateral tilt position decreases aortocaval compression; however, it has never been morphologically validated. We used MRI to examine whether the left-lateral tilt position reduces aortocaval compression based on measurements of the aortic and IVC volumes. The purpose of the current study was to investigate the effect of the lateral tilt angle

This article is featured in "This Month in Anesthesiology," page 1A. Corresponding article on page 231. This work was presented, in part, at the annual meeting of American Society of Anesthesiologists, October 14, 2014, New Orleans, Louisiana.

Submitted for publication May 5, 2014. Accepted for publication September 12, 2014. From the Department of Anesthesiology, Tokyo Women's Medical University, Tokyo, Japan.

Copyright © 2015, the American Society of Anesthesiologists, Inc. Wolters Kluwer Health, Inc. All Rights Reserved. Anesthesiology 2015; 122:286-93

(15°, 30°, and 45°) on the volume of the abdominal aorta and IVC in pregnant and nonpregnant women.

Materials and Methods

Following approval by the Hospital Ethics Committee (Tokyo Women's Medical University Hospital, Tokyo, Japan), written informed consent was obtained from 10 healthy women with cephalic singleton pregnancies at full term (37–39 weeks' gestation) and 10 nonpregnant healthy female volunteers. Pregnancy was confirmed by ultrasound and report of last menstruation. Nonpregnant women had negative pregnancy test results and reported menstruation in the previous 4 weeks. Women with obesity (body mass index > 30), cardiovascular disease such as hypertension (systolic blood pressure > 140 mmHg), a known fetal abnormality, and those women who were unable to lie in the supine position in the MRI because of supine hypotensive syndrome or claustrophobia were excluded from recruitment.

Sagittal MRI images of the abdomen were obtained to determine the portal hepatic region, and the spinal level was identified. Abdominal axial MRI images from the portal hepatic region to the middle of the pelvis for measurement of the volume of the abdominal aorta and IVC in either the supine or left-lateral tilt position at 15°, 30°, and 45° were obtained using an MRI system (Magnetom Symphony, Siemens, Tokyo, Japan) operating at 1.5 T at 2.3-mm increments with a fast-spin echo sequence, which highlights the aorta and IVC. Briefly, the technical specifications included a 1500-ms repetition time, 146-ms echo time, 40 × 34-cm field of view, 320 × 320-image matrix, and 1.5-mm slices at 0.8-mm intervals. The left-lateral tilt position was supported by a 1.5-m-long hard V-block constructed of closed-cell polyethylene foam that extended from head to toe under the right side of the subject's body. Although it was visually confirmed that the right side of the subject's body was properly positioned on the foam, the angle of the body was not assessed directly using a protractor. The subjects were first positioned supine, then at 15°, 30°, and 45° in order. The time required to obtain sagittal and axial MRI images at each position was 45 s, and 6 min and 36 s, respectively.

One of the authors (S.T.) determined the areas of the aorta and IVC from the L1–L2 disk level to the L3–L4 disk level for each axial MRI image using the public domain Osirix Imaging Software 5.8.5 (developed by Pixmeo, Bermex, Switzerland).^{*} The images were encoded and randomized to blind the investigator to the object of the current study and the source of the image with regard to pregnancy. The area of the axial section was each multiplied by the interval between slices (2.3 mm) to calculate aortic and IVC volumes from the L1–L2 disk level to the L3–L4 disk level. The volume from L1–L2 disk level to L3–L4 disk

level was chosen for two reasons: standardization and limitations of the images. MRI slices in different positions and/or subjects were not necessarily at the same level; disk levels were selected as a reference for anatomic segmentation in each subject. Although axial MRI images from the portal hepatic region to the middle of the pelvis were obtained in this study, measurements of the aortic and IVC volume were based only on images from the L1–L2 disk level to the L3–L4 disk level. Below the portal hepatic region to the L1–L2 disk level, there are many adjacent structures, such as the diaphragm, descending part of duodenum, and right renal vein, around the IVC. Accordingly, it was impossible to detect the IVC because of the limited resolution of the MRI in the current study. At the L1–L2 disk level, it is possible to detect the IVC with difficulty. Below the L3–L4 level, the aorta and IVC branch to the external and internal iliac arteries and veins, respectively.

Cardiac output (CO), mean arterial pressure, and heart rate were measured in each position using the thoracic bioimpedance technique just before or after MRI using bioimpedance cardiography with the BioZ instrument (Cardio Dynamics International, San Diego, CA). The cuff of an automated noninvasive blood pressure device was attached to the right arm. After 5 min of rest, CO, blood pressure, and heart rate were measured three times at 1-min intervals in the supine position. The mean value of the second and third readings was recorded as the baseline value. After changing to each position, the women were allowed to rest for 3 min before any measurements were obtained, and then these parameters were measured twice and averaged.²²

Table 1. Patient Characteristics and Magnetic Resonance Imaging Measurements in the Pregnant and Nonpregnant Women

	Pregnant (n = 10)	Nonpregnant (n = 10)
Age (yr)	34 ± 5	34 ± 4
Height (cm)	160 ± 5	160 ± 6
Weight (kg)	57 ± 8*	49 ± 4
Gestational age (week)	39 (37–39)	-
Parity (0/1)	6/4	8/2
Level of aortic bifurcation		
L4	9	5
L4–L5	0	1
L5	1	4
Aorta volume (ml)		
0°	12.7 ± 2.0	12.6 ± 2.1
15°	12.7 ± 2.1	12.6 ± 2.1
30°	12.9 ± 1.8	12.7 ± 1.8
45°	13.2 ± 2.2	12.3 ± 1.7
Inferior vena cava volume (ml)		
0°	3.2 ± 3.4‡	17.5 ± 7.8
15°	3.0 ± 2.1‡	19.7 ± 6.0
30°	11.5 ± 8.6†§	21.5 ± 6.2
45°	10.9 ± 6.8†§	20.6 ± 5.0

Values are mean ± SD, median (range), or number of women.

**P* < 0.05, †*P* < 0.01, ‡*P* < 0.001 compared with each value in the nonpregnant women. §*P* < 0.05 compared with each value in the supine position (0°).

* Available at: <http://www.osirix-viewer.com/>. Accessed September 13, 2014.

Table 2. Individual Parturient Characteristics and the Changes in the IVC Volume in Parturients

	Age (yr)	BMI (kg/m ²)	Gestational Age (week)	Parity	Side of Fetal Spine	Level of Aortic Bifurcation	IVC Volume (ml)			
							0°	15°	30°	45°
1	42	23.2	39	1	Right	L5	0.7	3.0	26.1	21.4
2	24	20.1	39	0	Right	L4	1.8	1.5	1.9	0.9
3	31	17.8	39	0	Right	L5	0.4	0.5	1.4	2.4
4	32	26.2	39	0	Right	L4–L5	9.7	5.2	23.5	10.8
5	31	25.2	38	0	Right	L4	0.3	1.7	16.3	15.8
6	36	19.3	39	1	Right	L4	1.2	1.2	13.5	18.5
7	37	22.7	39	1	Left	L5	3.3	2.2	6.8	12.4
8	37	21.8	38	0	Right	L5	6.6	6.5	12.5	13.0
9	31	21.6	38	0	Left	L4	1.1	2.6	3.6	4.7
10	35	25.6	37	1	Left	L4	7.1	5.9	9.3	9.0

BMI = body mass index; IVC = inferior vena cava.

Statistical Analysis

Power analysis ($\alpha = 0.05$, $\beta = 0.20$) indicated that a subject sample size of 11 per group was needed to reveal a significant difference in the IVC volume of supine pregnant women compared to those in the left-lateral tilt position at 30°, assuming that the difference in the IVC volume between the two points was 8.0 ml \pm 4 (mean \pm SD), which was based on a preliminary study. As the data were collected with 10 subjects per group, unplanned interim analyses were implemented because of slow recruitment (3 yr for the current study). The study was terminated because a significant difference was obtained. No attempts were made to adjust the significance level for the interim analyses. Data are expressed as mean

\pm SD or median (range) and analyzed using an unpaired test where appropriate. Inter- and intragroup comparisons were analyzed using a two-way repeated analysis of variance measure followed by the Dunnett *post hoc* test for multiple comparison. A *P* value of less than 0.05 was considered statistically significant (two-tailed). Statistical analyses were performed with JMP 11.0.0 software (SAS Institute, Cary, NC).

Results

Characteristics of the 20 women (10 each) included in the study are presented in table 1. Except for body weight ($P < 0.05$), there were no significant differences in measurements

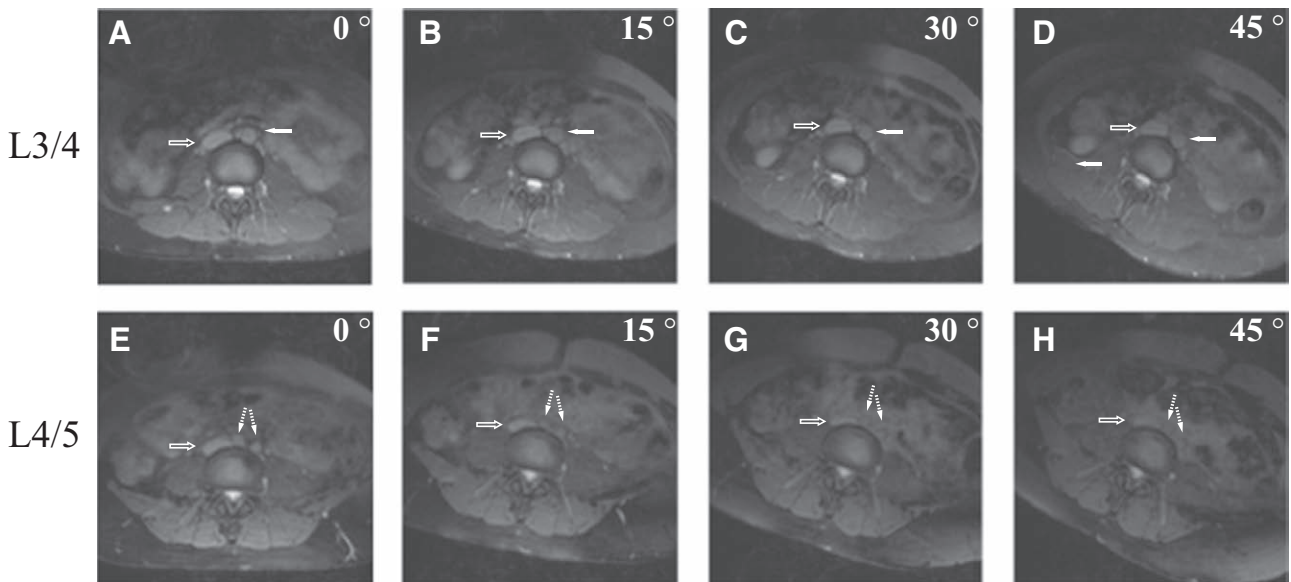


Fig. 1. Magnetic resonance images of a 31-year-old nonpregnant woman in either the supine (A and E), or left-lateral tilt position at 15° (B and F), 30° (C and G), or 45° (D and H) at the L3–L4 disk level (A–D) and the L4–L5 disk level (E–H). (A–D) Neither the aorta (solid arrow) nor inferior vena cava (IVC; outlined arrow) changed in size or shape in any position. Area of the aorta and IVC at each level was 1.4, 2.0 cm²; 1.5, 2.1 cm²; 1.6, 2.4 cm²; and 1.5, 2.4 cm², respectively. The IVC area at each level was 2.0, 2.1, 2.4, and 2.4 cm², respectively. (E–H) The size of the IVC changed slightly according to the position. The IVC area at each level was 1.9, 1.4, 1.2, and 1.8 cm², respectively. Right and left common iliac arteries (dashed arrow), which were divided from the abdominal aorta, were identifiable in any position. Area of the right and left common iliac arteries at each level was 0.7, 0.8 cm²; 0.5, 0.6 cm²; 0.8, 0.7 cm²; and 0.7, 0.7 cm², respectively. In these axial images, anterior is at the top of the figure and anatomic right is to the left in the figure.

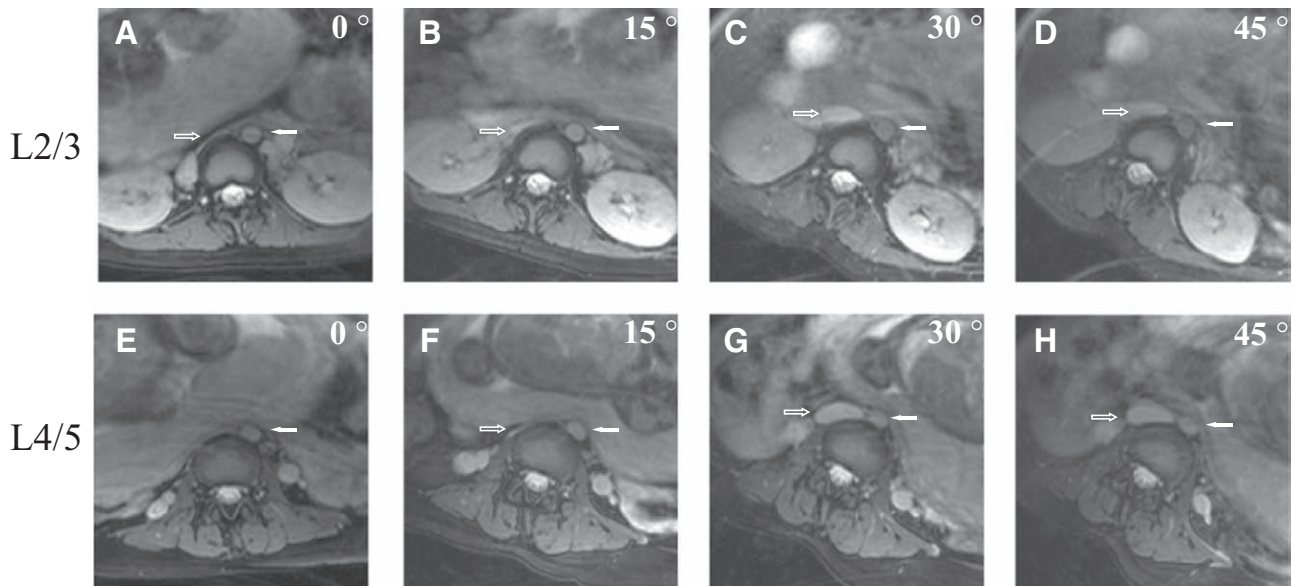


Fig. 2. Magnetic resonance images of a 42-year-old pregnant woman (the fetus was in the right occiput position; patient No.1) in either the supine position (A and E), or the at 15° (B and F), 30° (C and G), or 45° (D and H) left-lateral tilt positions at the L2–L3 disk level (A–D) and the L4–L5 disk level (E–H). (A–D) Aortic size (solid arrow) did not change significantly in any position. Aortic area at each level was 1.3, 1.3, 1.2, and 1.0 cm², respectively. The inferior vena cava (IVC; outlined arrow) was almost completely compressed, and the shape appeared band-like in the supine position. In the 15° left-lateral tilt position, the fetus was moved to the left, slightly reducing IVC compression. IVC compression was significantly reduced in the 30° left-lateral tilt position. The IVC area at each level was 0.2, 0.5, 2.1, and 1.8 cm², respectively. (E–H) The IVC was not identifiable in the supine position. In the 30° and 45° left-lateral tilt positions, IVC compression was significantly reduced. The IVC area at each level was 0.0, 0.5, 3.5, and 3.0 cm², respectively. The abdominal aorta did not divide to the common iliac artery at this level. The aorta was slightly deformed in the 15°, 30°, and 45° left-lateral tilt positions. Aortic area at each level was 1.2, 1.0, 1.0, and 0.9 cm², respectively. In these axial images, anterior is at the top of the figure and anatomic right is to the left in the figure.

between the pregnant women and the nonpregnant women. In 7 of 10 pregnant women, the fetus was in the right occiput position, and in the other 3 parturients, the fetus was in the left occiput position (table 2).

In both parturients and nonpregnant women, the abdominal aorta could be easily identified by its round shape and the volume was not significantly different in any of the left-lateral tilt positions, although the shape of aorta of parturients differed in some MRI slices (figs. 1–3). There was also no significant difference in the aortic volume between parturients and nonpregnant women in any of the left-lateral tilt positions (table 1).

In the nonpregnant women, the IVC was not compressed in the supine position and the volume of the IVC did not change in any of the left-lateral tilt positions (table 1; fig. 1). In contrast, the IVC was almost completely compressed by the gravid uterus in the supine position in all parturients (figs. 2 and 3). The IVC volume in the supine position in parturients was significantly smaller than in nonpregnant women (3.2 ± 3.4 vs. 17.5 ± 7.8 ml; mean difference, 14.3; 95% CI, 8.3–20.2; $P < 0.001$; table 1). The change in the IVC volume differed markedly in parturients among the left-tilt positions. (table 2; figs. 2 and 3). In the 15° left-tilt position, IVC volume was somewhat decreased in 5 of 10 parturients compared with that in the supine position (table 2). Overall, the IVC volume in parturients did not significantly differ

between the supine position and the 15° left-tilt position (3.0 ± 2.1 ml; mean difference, -0.2; 95% CI, -1.5 to 1.2; $P > 0.99$; table 1). In the 30° left-tilt position, the IVC volume in all parturients increased, compared with that in the supine position, although the extent of the increase varied (table 2). As a result, IVC volume was significantly different between the supine position and the 30° left-tilt position (11.5 ± 8.6 ml; mean difference, 8.3; 95% CI, 2.3–14.2; $P = 0.009$; table 1). In the 30° left-tilt position, the IVC volume was also significantly different between parturients and nonpregnant women (21.5 ± 6.2 ml; mean difference, 10.1; 95% CI, 2.8–17.2; $P = 0.009$; table 1). Although the IVC volume in the 45° left-tilt position (10.9 ± 6.8 ml) was significantly increased compared that within the supine position (mean difference, 7.7; 95% CI, 2.2–13.1; $P = 0.015$), the IVC was not significantly different between the 45° left-tilt and 30° left-tilt position positions (table 1). Parity and side of the fetal spine in the uterus were not significantly related to the IVC volume (table 2).

The site of aortic bifurcation (the abdominal aorta bifurcates into the right and the left common iliac arteries) varied among subjects (tables 1 and 2). Thus, it was not possible to compare the sizes of the aorta and iliac artery in parturients in the supine position with those in the left-lateral tilt position in parturients and/or in nonpregnant women because of the lack of a reference for anatomic segmentation in each

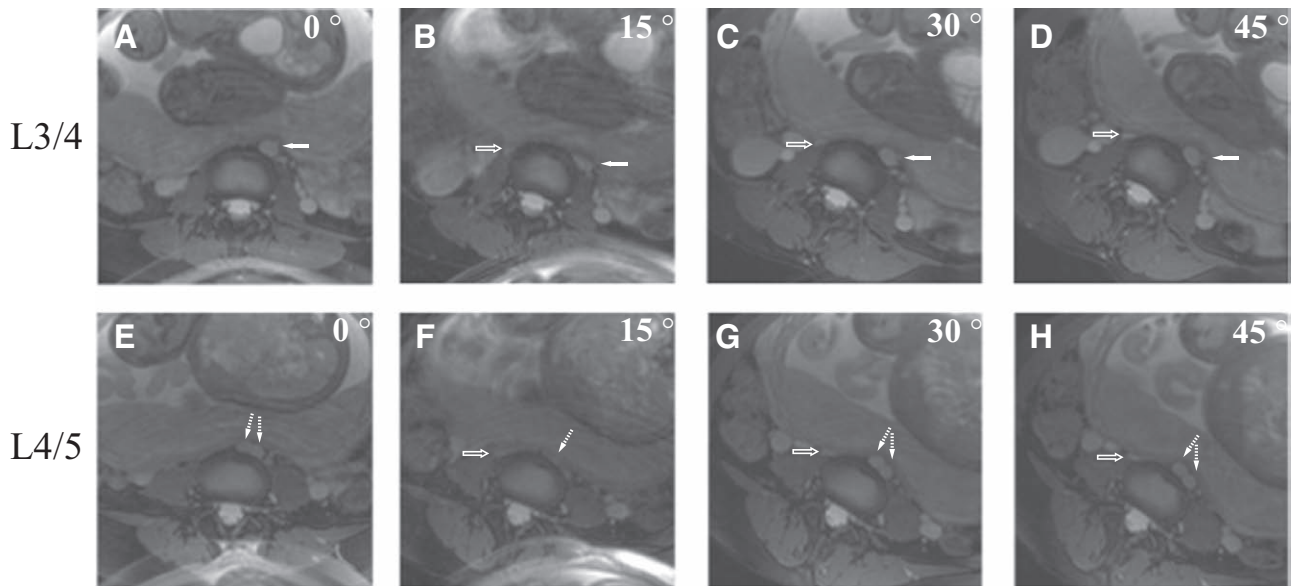


Fig. 3. Magnetic resonance images of a 31-year-old pregnant woman (the fetus was in the left occiput position; patient No.9) in either the supine position (A and E), or at the 15° (B and F), 30° (C and G), or 45° (D and H) left-lateral tilt positions at the L3–L4 disk level (A–D) and the L4–L5 disk level (E–H). (A–D) The aorta (solid arrow) was slightly compressed in the 15° left-lateral tilt position and deformed in the 30° and 45° left-lateral tilt positions. Aortic area at each level was 1.0, 0.8, 1.0, and 1.0 cm², respectively. The inferior vena cava (IVC; outlined arrow) was not identifiable in the supine position. Although the fetus was gradually moved to the left side of the abdominal cavity as the tilt angle increased, the IVC remained significantly compressed. The IVC area at each level was 0.0, 0.2, 0.2, and 0.2 cm², respectively. The arch shadow observed in the lower images in the supine and 15° left-lateral tilt positions is artifact. (E–H) Findings of the IVC at this level were the same as those at the L3–L4 disk level. The IVC at each level was 0.0, 0.3, 0.3, and 0.3 cm², respectively. Right and left common iliac arteries (dashed arrow), which were divided from the abdominal aorta, were identifiable in the supine position and at the 30° and 45° left-lateral tilt positions. In the 15° left-lateral tilt position, common iliac arteries were compressed and appeared band-like. Area of the right and left common iliac artery at each level was 0.6, 0.7 cm² (0°); 0.7, 0.7 cm² (30°); and 0.7, 0.7 cm² (45°), respectively. In these axial images, anterior is at the top of the figure and anatomic right is to the left in the figure.

subject. The lower abdominal aorta just proximal to the bifurcation appeared to remain round shaped and was not compressed in all parturients in the supine position (fig. 2),

Table 3. Hemodynamic Measurements in the Pregnant and Nonpregnant Women

	Pregnant (n=10)	Nonpregnant (n=10)
Cardiac output (l/min)		
0°	5.4±0.9	4.6±0.8
15°	5.6±0.9	4.7±0.7
30°	5.3±0.9	4.5±0.6
45°	5.4±1.1	4.5±0.6
Mean arterial pressure (mmHg)		
0°	77±8	76±8
15°	80±8	77±5
30°	78±9	76±5
45°	80±10	75±6
Heart rate (beats/min)		
0°	81±14	72±4
15°	79±13	73±7
30°	79±14	69±5
45°	81±14	71±6

Values are mean ± SD. Cardiac output, mean arterial pressure, and heart rate were not significantly different among the different positioning angles in each group or between pregnant and nonpregnant women.

and the bilateral common iliac arteries were also not compressed in five parturients in the supine position (fig. 3).

CO, mean arterial pressure, and heart rate were not significantly different among tilt angles in either group. In addition, the intergroup differences in CO, mean blood pressure, and heart rate at any angle were not significantly different between pregnant and nonpregnant women (table 3).

Discussion

Aortic volume did not differ between parturients and nonpregnant women at any angle examined. IVC volume in parturients differed according to the tilt angle, but IVC volume did not differ significantly between the 15° left-lateral tilt position and the supine position. In 1977, Hirabayashi *et al.*⁴ reported total IVC compression in parturients in the supine position, which was reduced in the left-lateral position. In their study, however, only three parturients were examined and only three MRI images were obtained per parturient. Further, the volumes of the abdominal aorta and IVC were not measured in left-lateral tilt positions. In the current study, however, many MRI images (approximately 140 images per woman) were obtained, and the volumes of the aorta and IVC were measured in multiple left-lateral tilt positions (15°, 30°, and 45°).

In 1935, Coutts *et al.*²³ performed abdominal aortography in pregnant women in late gestation and reported filling defects in the common iliac arteries. In the late 1960s, Bieniarz *et al.*^{5–8} also performed abdominal aortography in late-term pregnant (over 32 weeks' gestation) women and reported that the aorta is less densely opacified in the region of lumbar lordosis L4–L5 during uterine relaxation, and that the common iliac artery crossing the vertebra at L4–L5 is transiently occluded during uterine contraction in the anteroposterior views. Although the lateral angiograms obtained in their study demonstrated that aortic narrowing just at the level of lumbar lordosis, they did not quantify aortic size or report how many parturients exhibited aortic narrowing.^{5–8} In their series, Bieniarz *et al.* also reported that brachial artery pressure was higher than that recorded simultaneously in the femoral artery. Based on these findings, they concluded that the abdominal aorta and its branches were compressed by the gravid uterus in the supine position and demonstrated an imaginary cross-section illustration of the abdominal cavity at the L4 level where the aorta and IVC were similarly remarkably compressed.^{5–8} The illustrations of Bieniarz *et al.*, showing a flattened aorta, were later modified and widely presented in many articles^{24,25} and textbooks.^{26,27} Accordingly, many anesthesiologists and obstetricians, including us, have long held a firm belief that the abdominal aorta is compressed by the gravid uterus. Our findings, however, revealed that the volume of the abdominal aorta in parturients from the L1–L2 to L3–L4 disk level did not differ from that in nonpregnant women in the supine position (table 1). Further, axial MRI revealed that the lower abdominal aorta just proximal to the bifurcation remained round in all parturients in the supine position (fig. 3). To the best of our knowledge, this is the first study to evaluate and quantify the abdominal aorta in parturients on the basis of several cross-sectional images. Unfortunately, we were unable to evaluate bilateral common iliac arteries distal to the bifurcation because of the low resolution of the MRI.

Although pregnant woman would ideally maintain a full lateral position to avoid hemodynamic disturbances and uteroplacental hypoperfusion, this position is not practical for surgical access. Thus, the lateral table tilt or pelvic tilt position was introduced in clinical practice in the 1970s. In 1970, Ansari *et al.*¹¹ reported improved oxygen saturation of umbilical blood in the 10° left-lateral tilt position, especially under spinal anesthesia. The present common recommendation, first described by Crawford *et al.*²⁸ in 1972, is a 15° lateral tilt, achieved using a wedge-shaped cushion. They demonstrated that placing a cushion (angle of upper plane was 15°) under the hip of mothers to tilt the pelvis to the right or the left under general anesthesia significantly improved the fetal acid–base status. Others also reported improved maternal hemodynamics (CO and stroke volume) in the 15° left-lateral tilt position.^{12,15} Further, the maximal lateral tilt of a traditional

operating table is 15°.²⁹ On the other hand, several studies found no improvement in maternal hemodynamics or fetal parameters with parturients in 15° to 20° left-lateral tilt positions.^{18,21,30} The 15° tilt is disappointingly ineffective for preventing hypotension during spinal anesthesia for caesarean section.^{20,31} In the current study, mean IVC volume in parturients did not differ significantly between the supine and 15° left-tilt positions, although IVC volume varied among parturients. These findings may partly explain the conflicting results regarding the effect of the 15° left-tilt position on maternal hemodynamics or fetal parameters and the failure to prevent hypotension during spinal anesthesia.

In contrast to the 15° left-tilt position, IVC volume was significantly increased while in the 30° and 45° tilt positions. These findings might support the American Heart Association guideline for resuscitation of parturients.¹⁷ The American Heart Association recommends positioning pregnant patients in a left-lateral tilt of 27° to 30°, by using a firm wedge to support the pelvis and thorax, such as a Cardiff resuscitation wedge,¹⁶ if the manual left uterine displacement technique is unsuccessful (Class II b, Level of Evidence C).¹⁷ A tilt of 30° or more, however, may cause the patient to slide or roll off the inclined plane, and the compression force will gradually decrease, compared with that at a tilt of 27°.¹⁶ Although the compression force at an angle of 27° is 80% of that in the supine position, the corresponding value at the angles of 32°, 49°, and 90° is 70%, 62%, and 54%, respectively.¹⁶ In the current study, IVC volume did not differ significantly between in the 30° and 45° left-tilt positions, indicating that a tilt angle greater than 30° may not be necessary during resuscitation.

CO was chosen as our hemodynamic outcome measure because it is directly affected by aortocaval compression.^{15,29,32} In the current study, we measured CO based on thoracic bioimpedance, which is a complex dynamic process to indirectly calculate CO based on simplistic assumptions.³² This method of CO measurement is affected by changes in patient position and may thus be inaccurate as a result.³³ Although it is reported that CO increases with gestation to a maximum at about 30 weeks of 50% above that in nonpregnant controls and decreases until term to 32% above nonpregnant levels,^{34,35} we detected no significant difference in CO between pregnant and nonpregnant women in the current study. The failure to demonstrate a significant difference in CO might be due to the inaccuracy of the thoracic bioimpedance technique or the small number of patients included in the current study. In addition, CO did not differ significantly among parturients in any of the positions, although IVC volume at 30° and 45° was significantly increased compared with that in the supine position. Healthy parturients could also have compensation mechanism for caval compression. All parturients were able to lie in the supine position without any hemodynamic symptoms, such as hypotension.

The current study has several limitations. First, pregnant and nonpregnant women were not anesthetized. Accordingly, their abdominal muscles were not relaxed. If abdominal muscle relaxation is obtained, the pregnant uterus may displace to the left to a greater extent than observed in the current study. In addition, vasodilation did not occur because the sympathetic nervous system was not blocked. Further, the effect of intravenous fluid cannot be eliminated. In the current study, none of the subjects received intravenous fluid during the MRI and measurement of hemodynamic data. Second, parturients were not in labor. Aortic compression is reportedly more evident during labor.^{6,8,15} If MRI images are obtained during uterine contraction, different images of the arteries may be obtained. Third, to avoid complicated procedures, the order of the positions was consecutive and not randomized. Hemodynamic data resulting from a position change should be obtained in a randomized order to account for acclimatization.^{15,33} Acclimatization due to the consecutive order of the positions in the current study could partly explain the failure to detect a significant difference in the hemodynamic data based on the tilt angle. There are no reports, however, that morphology acclimates. Fourth, the enrolled parturients were healthy Japanese women, who were quite slender by the standards of many Western countries. In parturients with aortocaval compression syndrome, pregnancy-induced hypertension, obesity, or other comorbidities, the results might differ. Fifth, unplanned interim analyses were conducted without *P* value adjustments of statistical significance. We should have performed planned interim analyses in which statistical significance was obtained below a Bonferroni adjusted *P* value of 0.025. We believe, however, that it is unlikely that we made a type I error because statistically significant *P* values were obtained in unplanned, *post hoc* adjustments. Finally, the resolution of the MRI images was low. Because the boundaries of the adjacent structures were not clear, there are many sources of error in MRI, especially when measuring the IVC area. In addition, we could not evaluate the bilateral common iliac arteries distal to bifurcation. Further studies using MRI with improved resolution are required to investigate the effect of the lateral tilt position on the IVC, aorta, and their branches.

In conclusion, aortic volume in parturients did not differ among left-lateral tilt positions and did not differ from those in the nonpregnant woman. The IVC volume in parturients was not increased at 15° compared with that in the supine position, whereas the corresponding values were significantly increased at 30° and 45°.

Acknowledgments

The authors thank the study participants and staff at the Department of Radiology of Tokyo Women's Medical University (Shinjuku, Tokyo, Japan) for their cooperation.

Support was provided solely from institutional and/or department sources.

Competing Interests

The authors declare no competing interests.

Correspondence

Address correspondence to Dr. Higuchi: Department of Anesthesiology, Tokyo Women's Medical University, 8-1 Kawadacho, Shinjuku, Tokyo 162-8666, Japan. hhiguchi@anes.twmu.ac.jp. This article may be accessed for personal use at no charge through the Journal Web site, www.anesthesiology.org.

References

- Howard BK, Goodson JH, Mengert WF: Supine hypotensive syndrome in late pregnancy. *Obstet Gynecol* 1953; 1:371–7
- Kerr MG, Scott DB, Samuel E: Studies of the inferior vena cava in late pregnancy. *Br Med J* 1964; 1:532–3
- Scott DB: Inferior vena caval occlusion in late pregnancy and its importance in anaesthesia. *Br J Anaesth* 1968; 40:120–8
- Hirabayashi Y, Shimizu R, Fukuda H, Saitoh K, Igarashi T: Effects of the pregnant uterus on the extradural venous plexus in the supine and lateral positions, as determined by magnetic resonance imaging. *Br J Anaesth* 1997; 78:317–9
- Bieniarz J, Maqueda E, Caldeyro-Barcia R: Compression of aorta by the uterus in late human pregnancy. I. Variations between femoral and brachial artery pressure with changes from hypertension to hypotension. *Am J Obstet Gynecol* 1966; 95:795–808
- Bieniarz J, Crottogini JJ, Curuchet E, Romero-Salinas G, Yoshida T, Poseiro JJ, Caldeyro-Barcia R: Aortocaval compression by the uterus in late pregnancy. 1. An arteriographic study. *Am J Obstet Gynecol* 1968; 100:203–17
- Bieniarz J, Branda LA, Maqueda E, Morozovsky J, Caldeyro-Barcia R: Aortocaval compression by the uterus in late pregnancy. 3. Unreliability of the sphygmomanometric method in estimating uterine artery pressure. *Am J Obstet Gynecol* 1968; 102:1106–15
- Bieniarz J, Yoshida T, Romero-Salinas G, Curuchet E, Caldeyro-Barcia R, Crottogini JJ: Aortocaval compression by the uterus in late human pregnancy. IV. Circulatory homeostasis by preferential perfusion of the placenta. *Am J Obstet Gynecol* 1969; 103:19–31
- Eckstein KL, Marx GF: Aortocaval compression and uterine displacement. *ANESTHESIOLOGY* 1974; 40:92–6
- Morgan DJ, Paull JD, Toh CT, Blackman GL: Aortocaval compression and plasma concentrations of thiopentone at caesarean section. *Br J Anaesth* 1984; 56:349–54
- Ansari I, Wallace G, Clemetson CA, Mallikarjuneswara VR, Clemetson CD: Tilt caesarean section. *J Obstet Gynaecol Br Commonw* 1970; 77:713–21
- Secher NJ, Arnsbo P, Andersen LH, Thomsen A: Measurements of cardiac stroke volume in various body positions in pregnancy and during Caesarean section: A comparison between thermodilution and impedance cardiography. *Scand J Clin Lab Invest* 1979; 39:569–76
- Kinsella SM: Lateral tilt for pregnant women: Why 15 degrees? *Anaesthesia* 2003; 58:835–6
- Jones SJ, Kinsella SM, Donald FA: Comparison of measured and estimated angles of table tilt at Caesarean section. *Br J Anaesth* 2003; 90:86–7
- Lee SW, Khaw KS, Ngan Kee WD, Leung TY, Critchley LA: Haemodynamic effects from aortocaval compression at different angles of lateral tilt in non-labouring term pregnant women. *Br J Anaesth* 2012; 109:950–6
- Rees GA, Willis BA: Resuscitation in late pregnancy. *Anaesthesia* 1988; 43:347–9
- Vanden Hoek TL, Morrison LJ, Shuster M, Donnino M, Sinz E, Lavonas EJ, Jeejeebhoy FM, Gabrielli A: Part 12: Cardiac

- arrest in special situations: 2010 American Heart Association Guidelines for Cardiopulmonary Resuscitation and Emergency Cardiovascular Care. *Circulation* 2010; 122(18 Suppl 3):S829–61
18. Rees SG, Thurlow JA, Gardner IC, Scrutton MJ, Kinsella SM: Maternal cardiovascular consequences of positioning after spinal anaesthesia for Caesarean section: Left 15 degree table tilt vs. left lateral. *Anaesthesia* 2002; 57:15–20
 19. Mendonca C, Griffiths J, Ateleanu B, Collis RE: Hypotension following combined spinal-epidural anaesthesia for Caesarean section. Left lateral position vs. tilted supine position. *Anaesthesia* 2003; 58:428–31
 20. Kinsella SM, Whitwam JG, Spencer JA: Reducing aortocaval compression: How much tilt is enough? *BMJ* 1992; 305:539–40
 21. Matorras R, Tacuri C, Nieto A, Gutierrez de Terán G, Cortés J: Lack of benefits of left tilt in emergent cesarean sections: A randomized study of cardiotocography, cord acid-base status and other parameters of the mother and the fetus. *J Perinat Med* 1998; 26:284–92
 22. Jeon YT, Hwang JW, Kim MH, Oh AY, Park KH, Park HP, Lee Y, Do SH: Positional blood pressure change and the risk of hypotension during spinal anesthesia for cesarean delivery: An observational study. *Anesth Analg* 2010; 111:712–5
 23. Coutts WE, Opazo L, Bianchi TB, Donoso OS: Abdominal circulation during late pregnancy as shown in aortograms. *Am J Obstet Gynecol* 1935; 29:566–71
 24. Colon-Morales MA: A self-supporting device for continuous left uterine displacement during cesarean section. *Anesth Analg* 1970; 49:223–4
 25. Camann WR, Ostheimer GW: Physiological adaptations during pregnancy. *Int Anesthesiol Clin* 1990; 28:2–10
 26. Lucero JM, Rollins MD: *Obstetrics, Basic Anesthesia*, 6th edition. Edited by Miller RD, Pardo M. Philadelphia, Elsevier Health Sciences, 2011, pp 514–45
 27. Wong CA: *Obstetric pain, Bonica's Management of Pain*, 4th edition. Edited by Fishman S, Ballantyne J, Rathmell JP. Philadelphia, Lippincott Williams & Wilkins, 2010, pp 791–806
 28. Crawford JS, Burton M, Davies P: Time and lateral tilt at Caesarean section. *Br J Anaesth* 1972; 44:477–84
 29. Bamber JH, Dresner M: Aortocaval compression in pregnancy: The effect of changing the degree and direction of lateral tilt on maternal cardiac output. *Anesth Analg* 2003; 97:256–8
 30. Kinsella SM, Lee A, Spencer JA: Maternal and fetal effects of the supine and pelvic tilt positions in late pregnancy. *Eur J Obstet Gynecol Reprod Biol* 1990; 36:11–7
 31. Sharwood-Smith G, Drummond GB: Hypotension in obstetric spinal anaesthesia: A lesson from pre-eclampsia. *Br J Anaesth* 2009; 102:291–4
 32. Steinbrook RA, Bhavani-Shankar K: Hemodynamics during laparoscopic surgery in pregnancy. *Anesth Analg* 2001; 93:1570–1
 33. Armstrong S, Fernando R, Columb M, Jones T: Cardiac index in term pregnant women in the sitting, lateral, and supine positions: An observational, crossover study. *Anesth Analg* 2011; 113:318–22
 34. Bosio PM, McKenna PJ, Conroy R, O'Herlihy C: Maternal central hemodynamics in hypertensive disorders of pregnancy. *Obstet Gynecol* 1999; 94:978–84
 35. Kametas NA, McAuliffe F, Cook B, Nicolaides KH, Chambers J: Maternal left ventricular transverse and long-axis systolic function during pregnancy. *Ultrasound Obstet Gynecol* 2001; 18:467–74