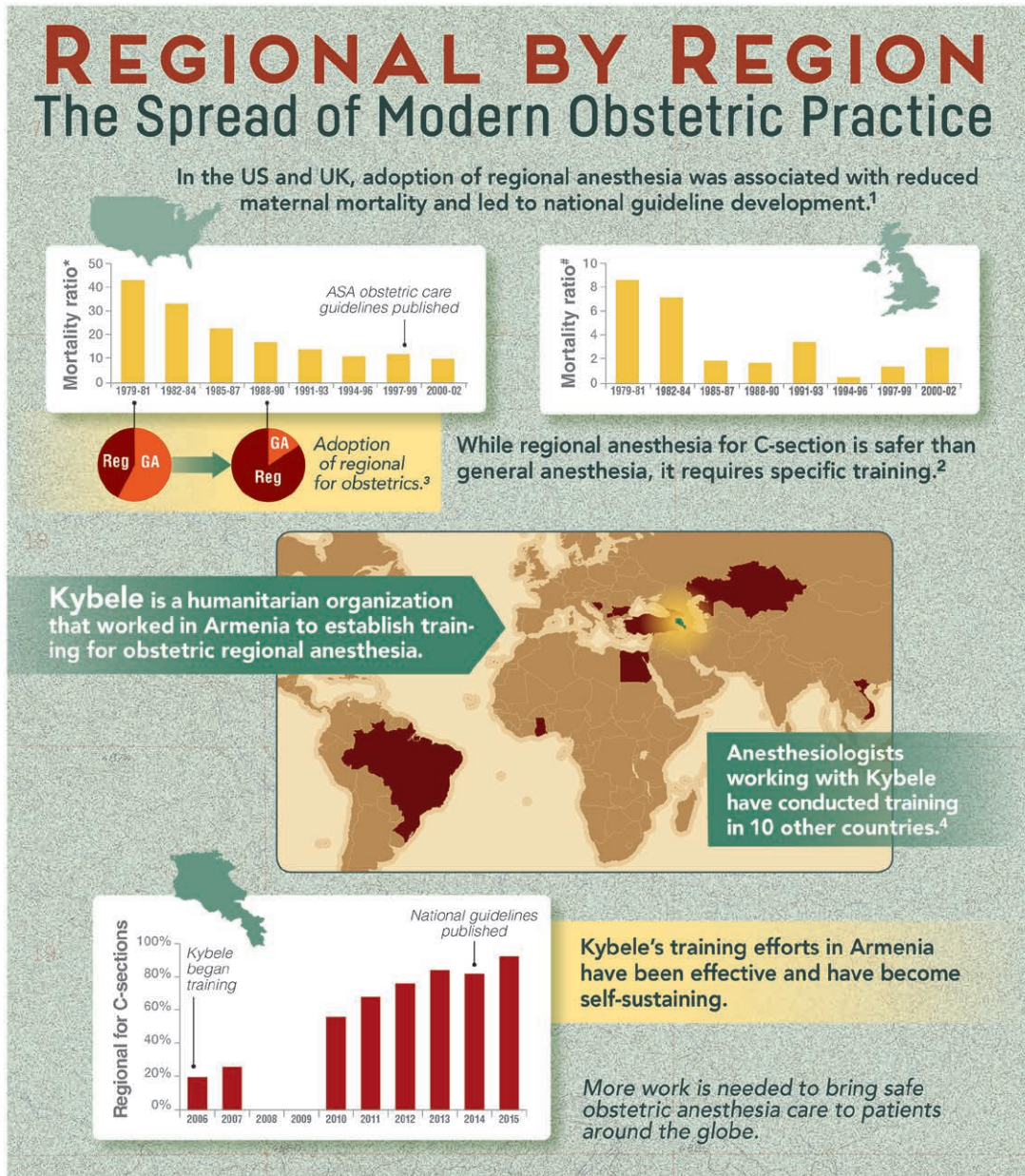


# ANESTHESIOLOGY



\*Pregnancy-related mortality ratio due to anesthesia, maternal deaths per million live births. #Pregnancy-related mortality ratio due to anesthesia, maternal deaths per million maternities (live births, still births, pregnancy terminations, ectopic pregnancies, and abortions). ASA = American Society of Anesthesiologists; C-section = cesarean section; GA = general anesthesia; Reg = regional.

Infographic created by Jonathan P. Wanderer, Vanderbilt University Medical Center, and James P. Rathmell, Brigham and Women's Health Care/Harvard Medical School; illustration by Annemarie Johnson, Vivo Visuals. Address correspondence to Dr. Wanderer: jonathan.p.wanderer@vanderbilt.edu.

1. Hawkins JL, Chang J, Palmer SK, Gibbs CP, Callaghan WM: Anesthesia-related maternal mortality in the United States: 1979–2002. *Obstet Gynecol* 2011; 117:69–74  
 2. Yuill G, Amroyan A, Millar S, Vardapetyan E, Habib AS, Owen MD: Establishing obstetric anesthesiology practice guidelines in the Republic of Armenia: A global health collaboration. *ANESTHESIOLOGY* 2017; 127:220–6  
 3. Hawkins JL, Koonin LM, Palmer SK, Gibbs CP: Anesthesia-related deaths during obstetric delivery in the United States, 1979–1990. *ANESTHESIOLOGY* 1997; 86:277–84  
 4. Kybele homepage. Available at: <http://www.kybeleworldwide.org/projects.html>. Accessed May 25, 2017