

Appropriate Clinical Use of Lactate Measurements

Richard M. Pino, M.D., Ph.D., F.C.C.M., Jaskaran Singh, M.D.

Blood lactate measurements have a longstanding history in clinical medicine to assess both disease severity in critical illness and the response to therapeutic interventions. Lactic acid was first discovered in sour milk in 1780 by Swedish pharmacist Carl Wilhelm Scheele and identified in blood during shock by the German physician Johann Joseph Scherer in 1843.¹ Early studies, summarized by Schuster,² demonstrated the value of assessing lactate in critically ill patients. A meta-analysis of more than 150 reports on lactate concluded that lactate concentrations are important in risk stratification in critically ill patients and a potential endpoint for resuscitation.³ Because lactate is a product of anaerobic metabolism, it is broadly considered as an indicator of tissue hypoxia. However, hyperlactatemia can occur without hypoxia such as in adrenergic states and due to the administration of β_2 -agonists.^{4,5}

Numerous studies have shown that blood lactate has a positive correlation with both short- and long-term patient morbidity and mortality.^{6,7} The measurement of lactate has received increasing attention in recent years with its establishment as the first core element of the Hour-1 Surviving Sepsis 2016 Campaign bundle of care. The campaign recommends guiding patient fluid resuscitation to the normalization of lactate concentrations.⁸ However, since elevated lactate can originate from a variety of pathophysiologic processes in addition to sepsis, and the application of the test and its interpretation are often misused, it is essential to understand the mechanism of lactate production and the various physiologic causes of elevated serum lactate.

Lactate Production and Metabolism

In normal states of oxygenation, mitochondria efficiently generate adenosine triphosphate (ATP) for aerobic metabolism. In this process, glucose is converted by glycolysis to pyruvate that enters the Krebs (citric acid) cycle with acetyl-coenzyme A serving as the intermediary to unleash the chemical energy of molecular oxygen to generate the majority of cellular ATP during oxidative phosphorylation. When there is insufficient oxygen to power the Krebs cycle and oxidative phosphorylation, the pyruvate produced by glycolysis is instead shunted toward the production of lactate by the enzyme lactate dehydrogenase.

Lactate is produced in all cells to varying degrees: muscles (25%), skin (25%), brain (20%), intestines (10%), and erythrocytes (20%).⁹ Mature erythrocytes lacking mitochondria generate lactate through ATP synthesis from glycolytic enzymes associated with the cell membrane. When erythrocytes are exposed to low PaO_2 , a conformational change of hemoglobin to deoxyhemoglobin dislodges the glycolytic complex, activates phosphofructokinase, and accelerates ATP production.¹⁰ ATP *via* purinergic receptors stimulates vasomotor responses that increase blood flow to tissues.¹⁰ Lactate is a signal molecule in the brain to link neuronal activity, metabolism, substrate availability, and blood flow¹¹ and may be involved with short-term memory¹² and panic disorders.¹³

Most body lactate production is from skeletal muscles. Lactate is released from the tissues into circulation and metabolized in the liver (60%) and kidneys (30%) back to glucose *via* gluconeogenesis for reuse in the various organs in glycolysis (fig. 1).⁹ It is directly filtered and reabsorbed by the kidney with only a small percentage lost to urine.¹⁴ This cycle, known as the Cori cycle, generates ATP in times of stress at the tissue level *via* glycolysis but at the overall net body metabolic expense of ATP during hepatic and renal gluconeogenesis.

Lactate versus Lactic Acid

Lactate and lactic acid are often used interchangeably without an understanding of some clinical biochemical basics. Lactate as anion $[\text{lactate}]^-$ is a weak base formed directly by the conversion from pyruvate. $[\text{Lactate}]^-$ is a buffer that accepts some of the protons generated during the hydrolysis of ATP to adenosine diphosphate. In times of demand, glycolysis can occur at several orders of magnitude quicker than the Krebs cycle and oxidative phosphorylation.¹⁵ When excess hydrogen ions are unable to be utilized by aerobic metabolism or neutralized by bicarbonate, lactate, and other body buffer systems, acidosis results. Hyperlactatemia is therefore mostly a *consequence* of cellular acidosis and *not a direct cause* of acidosis. When arterial pH falls below normal range and is concurrent with hyperlactatemia, it is commonly termed lactic acidosis. It is more appropriate to use a term such as sepsis- or drug-associated lactic acidosis.

Submitted for publication July 28, 2020. Accepted for publication November 20, 2020. Published online first on December 17, 2020. Corrected on April 30, 2021. From the Department of Anesthesia, Critical Care and Pain Medicine, Massachusetts General Hospital, Harvard Medical School, Boston, Massachusetts.

Copyright © 2020, the American Society of Anesthesiologists, Inc. All Rights Reserved. Anesthesiology 2021; 134:637–44. DOI: 10.1097/ALN.0000000000003655

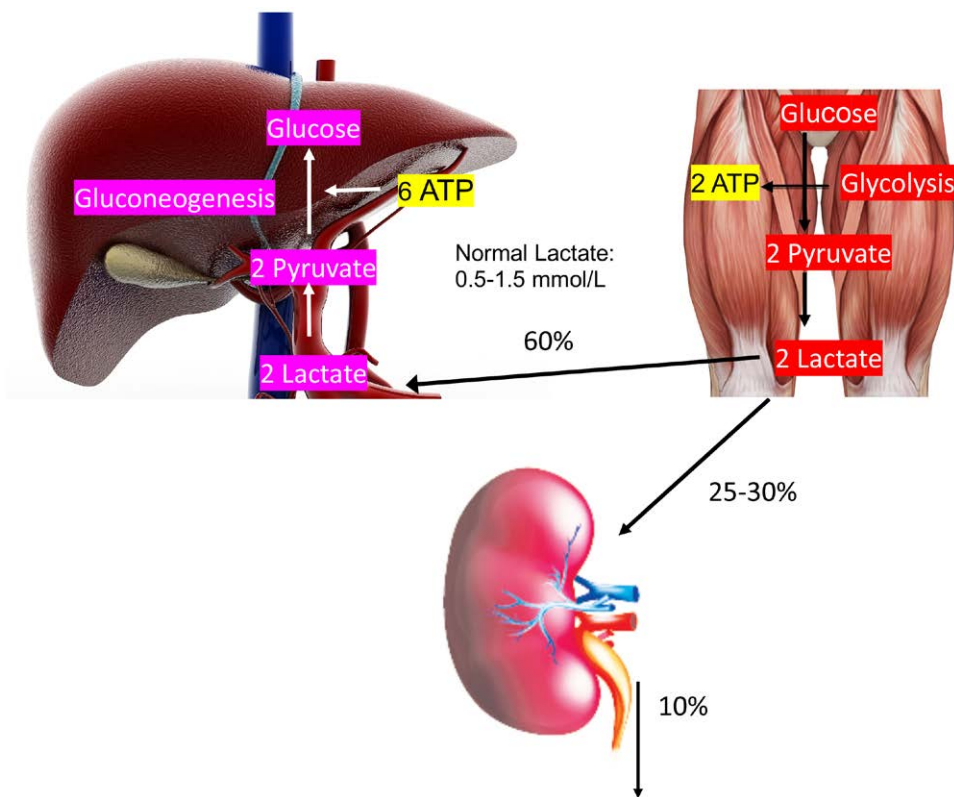


Fig. 1. Elements of the Cori cycle. In skeletal muscle, lactate is the product of conversion from pyruvate generated from glycolysis and converted to glucose by the liver in ATP-dependent processes. The kidney is responsible for 25 to 30% of lactate metabolism. The remaining small amount is metabolized by other organs or lost in the urine.

Clinical Reasons for Increased Lactate

The average adult produces 15 to 25 milliequivalents per kilogram per day of lactate, with serum concentrations in the range of 0.5 to 1.5 mM. In critical illness, less than 2 mM is generally accepted as normal.¹⁶ Blood samples from central venous and arterial catheters have similar values.¹⁷ Peripheral venous lactate is acceptable when lactate is normal, but correlation to arterial and central venous lactate is poor during hyperlactatemia.¹⁸ Lactate can accumulate due to increased production, decreased utilization, or both. Accordingly, blood lactate can be elevated in a variety of conditions not associated with tissue hypoxia. The administration of lactated Ringer's solution, which contains 28 mM lactate, does not increase serum lactate. In a double-blind study, there was no significant difference in serum lactate between the administration of 30 ml/kg lactated Ringer's solution and normal saline.¹⁹

Lactic acidosis is categorized as type A when it is due to tissue hypoxia or systemic hypoperfusion and type B caused by other factors.²⁰ Type B1 is secondary to underlying disease, type B2 is associated with toxins or drugs, and type B3

is associated with inborn errors of metabolism.²¹ Significant overlap can exist between types A and B lactic acidosis.

Type A Lactic Acidosis

Anaerobic glycolysis is usually increased in critical illness. Any generalized circulatory shock state (hypovolemic, cardiogenic, distributive, obstructive) can cause decreased perfusion of tissues that will lead to tissue hypoxia and type A lactic acidosis. Regional hypoperfusion is also a common driver of lactic acidosis such as with limb or individual organ ischemia secondary to arterial or venous thrombosis, compartment syndrome, trauma, burns, necrotizing soft tissue infections, rhabdomyolysis, or iatrogenic surgical clamping. Even when there is normal perfusion, blood oxygen content can be diminished, leading to a type A lactic acidosis. Causes of low blood oxygen content can be secondary to hypoxemia from respiratory failure, severe anemia, or carbon monoxide poisoning. However, the critical level below which hypoxemia elevates lactate is considerably low (PaO_2 less than 35 mmHg).²² For all these pathophysiologic states, hyperlactatemia will occur when the rate of lactate production is greater than the rate of lactate clearance by

the liver²³ and exceeds the 5- to 6-mM threshold of renal excretion.⁹

Skeletal muscle has the greatest capacity to generate lactate among body tissues and is reflected clinically in several ways. During intense heavy exercise, lactate can rise to 15 to 20 mM as a normal physiologic response to meet energy needs. This rise is transient and rapidly cleared by the body.²⁴ Generalized tonic-clonic epileptic activity can create profoundly elevated lactate from unhinged anaerobic skeletal muscle contractions that should clear within 1 to 2 h of seizure cessation.²⁵ Any disorder with acute muscle rigidity including serotonin syndrome, neuroleptic malignant syndrome, and malignant hyperthermia will produce elevations in lactate by the same mechanism. Increased respiratory muscle work can also contribute to elevated lactate independent of the ability to oxygenate. Hyperlactatemia from severe shivering during hypothermia and from agitated patients resisting physical restraints has also been described.²⁶ Seizures from conducted energy weapons, *e.g.*, TASER, cause a transient increase in lactate that is not considered clinically relevant.²⁷

Type B Lactic Acidosis

Type B lactic acidosis occurs in the absence of evidence for inadequate tissue oxygen delivery. Although much less common than type A lactic acidosis, type B has a very broad differential diagnosis (fig. 2). Elevated lactate due to failure of clearance can be seen in both hepatic and renal dysfunction but will be more pronounced with cirrhosis and end-stage liver disease as the liver is the primary site of gluconeogenesis. Many inborn disorders of carbohydrate metabolism, glycogen storage, or mitochondrial dysfunction can cause elevations in lactate by downstream defects leading to the buildup of pyruvate. These rare congenital diseases are generally only seen in pediatric populations.

Other pathologic states also contribute to lactic acidosis based on where they interfere with the cellular metabolic cascade. During ethanol intoxication, as well methanol and propylene glycol poisoning, alcohol dehydrogenase generates nicotinamide adenine dinucleotide, which increases the nicotinamide adenine dinucleotide/nicotinamide adenine dinucleotide ratio, favoring the conversion of pyruvate to lactate to achieve equilibrium.²⁸ Thiamine deficiency that is also present with nutritional deficits of alcohol use also precipitates anaerobic metabolism, because it is a necessary cofactor for multiple metabolic enzymes involved in utilizing pyruvate, including pyruvate dehydrogenase. Cyanide toxicity decouples the electron transport chain in oxidative phosphorylation, leading to elevations in serum lactate.²⁶

Many drugs have been implicated with lactic acidosis. The classical example is the commonly used antihyperglycemic metformin. Metformin rarely causes lactic acidosis, but it is often associated with lactic acidosis in the presence of other comorbidities.²⁷ Metformin reduces the uptake of lactate by the liver *via* several proposed mechanisms to reduce hepatic

gluconeogenesis. It augments lactate production through increased glycolysis by impairment of mitochondrial complex 1, which maintains a proton gradient required for ATP production. High doses of metformin will reduce lactate uptake in the liver and increase production in the intestine and other organs.²⁹ Interestingly, a study of 37,000 intensive care unit patients showed a lower mortality in metformin users (35%) compared to nonusers (43%) for those with lactates of 5 to 10 mM.³⁰ Diabetes independently has been linked to lactic acidosis unrelated to metformin use. The antibiotic linezolid and several nucleoside reverse transcriptase inhibitor therapies to treat human immunodeficiency virus are associated with mitochondrial toxicity. Any drug overdose resulting in hepatic or renal impairment or excess sympathetic activity can lead to lactic acidosis. Malignancy-associated lactic acidosis is possible from increased anaerobic metabolism within tumor cells.

Plasma lactate concentrations are altered by actions on β_2 receptors. Epinephrine, when used for septic shock, increases lactate *via* an enhanced lactate/pyruvate ratio and decreased splanchnic blood flow.⁴ Infusions of epinephrine into healthy volunteers during aerobic conditions increased lactate thought to be due to the direct effect of epinephrine on carbohydrate metabolism, termed aerobic glycolysis.⁴ An earlier study showed that infusions of norepinephrine result in small increases in lactate within the range of normal, while dobutamine did not affect the lactate concentration.³¹ In sepsis, increases in epinephrine doses caused linear increases in lactate, while there were decreases with dobutamine.^{32,33} Inhaled β -agonists administered for the treatment of asthma can cause hyperlactatemia, with some values exceeding 4 mM.⁵

Knowledge of the potential effects of propofol on lactate metabolism is essential for the anesthesiologist. The identification of the propofol infusion syndrome after high doses and/or prolonged administrations with associated hyperlactatemia created a plethora of case reports.³⁴ However, in a well-controlled investigation, after 8 h of spine surgery under total intravenous anesthesia with propofol, there was no increase in serum lactate compared to a 7% rise with a sevoflurane anesthetic.³⁵

D-lactate is the stereoisomer of L-lactate and is produced by certain intestinal bacteria through the methylglyoxal pathway in the presence of large undigested carbohydrate loads or from ingested food such as cheese.³⁶ D-lactate comprises a small fraction of tissue lactate, and type D lactic acidosis is a specific disorder that can occur in patients with short bowel syndrome. Results of studies that used D-lactate as a marker for gut ischemia have had inconsistent results.³⁶ The level of D-lactate in the urine is elevated in diabetes and, in conjunction with microalbuminuria, may be an initial indicator of nephropathy.³⁷ D-lactate is not identified on typical laboratory assays for lactate but should be on the differential in patients with

Type A Lactic Acidosis: Lactate > 2.0 mmol/L:

Sepsis
Ischemic bowel

Hemorrhagic shock

Hypoperfusion
Cardiogenic shock



Type B Lactic Acidosis Lactate > 2.0 mmol/L:

Liver Disease
Malignancy
Diabetes
Short bowel (D-lactate)
Renal failure
Metformin
HIV reverse transcriptases
Linezolid

Fig. 2. Type A lactic acidosis is caused by decreased oxygenation of tissues as demonstrated by the ischemic bowel and ultrasound image of cardiomyopathy. Type B lactic acidosis is caused by increased lactate product in oxygenated tissue through organ dysfunction, metabolic factors, and drug effects. In both types of lactic acidosis, as well as cirrhosis, the accumulated lactate overwhelms the liver's capacity to metabolize it to glucose. HIV, human immunodeficiency virus.

short bowel syndrome and unexplained anion-gap metabolic acidosis.³⁷

Sepsis

Sepsis is a unique clinical entity that is associated with both type A and type B lactic acidosis. As a dysregulated host response to infection, sepsis and septic shock result in macrocirculatory, microcirculatory, and cellular-level derangements. Even after adequate fluid resuscitation, multiple mechanisms can contribute to the continued generation of lactate. Capillary endothelial damage may impair the ability of erythrocytes to unload oxygen even when the hemodynamics are normal or have been corrected. Animal studies have shown that lactate interferes with erythrocyte ATP production and release in response to low PaO₂.¹⁰ This unresponsiveness with hyperlactatemia, exemplified in *Plasmodium falciparum* infections, may be partly responsible for the hypotension of septic shock.¹⁰

Hypotension due to myocardial dysfunction is common in sepsis. Extrapolation of exercise studies may provide some insight about myocardial metabolism in sepsis. During exercise, myocardial oxidation of glucose and lactate is increased.³⁸ Glucose uptake by the myocardium is increased with mild/moderate exercise but, in contrast, decreased during high-intensity exercise.³⁹ These findings suggest that other substrates, such as lactate, might contribute to cardiac energy metabolism.³⁹

Sepsis and critical illness can result in an overall state of adrenergic from both endogenous catecholamine release and exogenous administration that will stimulate glycolysis. Lactate production increased during experimental endotoxic shock from β₂-stimulation was related to elevations in endogenous epinephrine, suggesting that hyperlactatemia may be an adaptive mechanism.⁴⁰ It has been postulated that enzymatic (including pyruvate dehydrogenase) and cellular mitochondrial dysfunction in sepsis also result in an inability to use oxygen even when available.⁴¹ In addition to directly limited renal and hepatic perfusion, the capacity of these organs to undergo gluconeogenesis becomes severely reduced with profound acidemia. Stable septic patients infused with lactate who developed hyperlactatemia compared to those without this response had a lower lactate clearance, suggesting that the increases were secondary to a defect in utilization.⁴²

Guiding Therapy

A patient presenting with initial elevated lactate should undergo a careful diagnostic approach and treatment tailored to an underlying cause. The measurement of lactate has three purposes: diagnosis of severe sepsis, stimulus for the initiation of goal-directed therapy, and establishment of a baseline when elevated to determine the efficacy of treatment.⁴³ Treatment of type A lactic acidosis should focus on restoration of local or global tissue perfusion with the core

principles of volume resuscitation, hemodynamic support with vasoactive medications, and source control. When the initial diagnosis remains unclear, tissue hypoperfusion can be assumed until proven otherwise. Disorders of type B lactic acidosis will generally require treatment by removal of an offending agent or correction of a primary metabolic deficit when possible. Often the origin of elevated serum lactate is difficult to determine.

Classic studies demonstrated that elevations in lactate portend poor outcomes and are associated with increased mortality.^{43,44} By far the greatest emphasis on the utility of lactate has been in early identification and treatment of sepsis. The main tenets of the Hour-1 Surviving Sepsis 2016 Campaign in patients with suspected sepsis include measurement of initial lactate level, remeasurement within 2 to 4 h if it is greater than 2 mM, and rapid administration of 30 ml/kg crystalloid for hypotension or lactate greater than or equal to 4 mM.⁴⁵ Several randomized controlled trials demonstrate significant reduction in mortality with early lactate-guided resuscitation.⁴⁶

After initial guideline-directed volume resuscitation, judicious continual reassessment of patient volume status is necessary to prevent fluid overload.⁴⁷ Mortality increases 2.3% for each additional liter of fluid administered above a 5-l resuscitation.⁴⁸ Failure to clear lactate should prompt the clinician to rebroaden the differential diagnosis for occult sources of elevation.

Using Lactate to Guide Therapy

Tissue perfusion is the balance between oxygen delivery and oxygen consumption. The traditional wisdom is that mixed venous oxygenation (sampled from the pulmonary artery) and lactate have a reciprocal relationship, but this is a fallacy. Initial proponents of goal-directed therapy focused on the use of mixed venous oxygen saturation from a central vein as the endpoint of resuscitation for sepsis.⁴⁹ In a study of more than 2,000 patients, lactate and mixed venous oxygen saturation from a central vein had poor correlation for patients with mixed venous oxygen saturation from a central vein less than or equal to 65%, normal kidney and liver function, and septic shock.⁵⁰ Similarly, for 79% of patients, there was no relationship between lactate clearance and mixed venous oxygen saturation from a central vein using mixed venous oxygen saturation from a central vein greater than or equal to 70% in the first 6 h of resuscitation.⁵¹ When peripheral perfusion-targeted resuscitation was compared to changes in lactate, there was no difference in mortality seen.⁵² In cardiogenic shock, the lactate/pyruvate ratio is high. When these patients are stabilized, the lactate/pyruvate ratio is only slightly elevated, suggesting that it is not superior to that of a lactate level.⁹ In septic shock patients treated with catecholamines, hyperlactatemia with an elevated lactate/pyruvate ratio is more correlated with a prognosis of multisystem organ failure and death.⁵³

The assessment of lactate clearance is an important indicator of mortality as assessed in multicenter studies. After lactate-guided fluid resuscitation, the mortality for sepsis was 19% of the patients who cleared lactate in contrast to 60% who did not.⁵¹ In a similar study, the goal was the reduction of lactate by greater than or equal to 20% for the initial 2 h of treatment compared to the control group that was blinded to postadmission lactate values. Although the lactate group received more fluids and vasodilators, there were no significant differences between the groups, but hospital mortality was lower in the lactate group.⁵⁴

Additional Considerations

Lactate increases in the critically ill reflect more than just tissue hypoxia. Even in the presence of oxygen, cellular mitochondria are unable to process all the pyruvate presented to them, resulting in hyperlactatemia. Consequently, supranormal delivery of oxygen by increasing the fraction of oxygen delivered is an ineffective therapy. The desire to return to a normal level of homeostasis has led many to suggest bicarbonate administration to neutralize lactic acidosis. Unfortunately, outside of a possible benefit in select populations such as those with renal failure⁵⁵ or right ventricular dysfunction,⁵⁶ studies to date have not consistently demonstrated effectiveness, and some even suggest harm.⁵⁷

Vitamin C, corticosteroids, and thiamine have been proposed as therapeutic agents for sepsis.⁵⁸ Thiamine is an essential cofactor in aerobic metabolism for multiple enzymatic reactions, including pyruvate dehydrogenase within the Krebs cycle and the pentose-phosphate pathway for the regeneration of nicotinamide adenine diphosphate. It is tempting to speculate that the replenishment of thiamine deficiency due to increased mitochondrial stress in sepsis may lessen hyperlactatemia. Patients in septic shock who received thiamine within the first 24 h of admission had improved lactate clearance and a reduction in 28-day mortality.⁵⁹ Recent trials failed to show benefits. A blind, randomized control study was based on a 28-day mortality, but the initial lactate (1.6 to 3.2 mM) was not as elevated as clinicians commonly see in severe sepsis.⁶⁰ An open-label, multicenter study showed no mortality benefit or vasopressor reduction (calculated as the sum of norepinephrine doses and converted doses of epinephrine and vasopressin) at 7 days.⁶¹ Baseline thiamine levels were not obtained in either report.

Conclusions

Increased blood lactate serves as a marker of metabolic derangement from a multitude of clinical etiologies. The approach to the patient with initial lactate elevation should focus on early identification of source to tailor treatment accordingly. Restoration of tissue perfusion is paramount. Lactate levels are strongly predictive of patient outcomes, but the relationship with fluid resuscitation is less

pronounced. Intravenous fluid boluses are not benign, and persistent hyperlactatemia warrants reevaluation for proper source control and consideration of alternative therapeutic interventions.

Research Support

Support was provided solely from institutional and/or departmental sources.

Competing Interests

Dr. Pino reports financial relationships with CRICO (Boston, Massachusetts) and Morrison Mahoney (Boston, Massachusetts; expert legal testimony) and with Genentech/Roche (South San Francisco, California; stock options from spouse). The other author declares no competing interests.

Correspondence

Address correspondence to Dr. Pino: Department of Anesthesiology, Louisiana State University Health Science Center, 1542 Tulane Avenue, Room 659, New Orleans, Louisiana 70112. rpino1@lsuhsc.edu. ANESTHESIOLOGY's articles are made freely accessible to all readers on www.anesthesiology.org, for personal use only, 6 months from the cover date of the issue.

References

1. Kompanje EJ, Jansen TC, van der Hoven B, Bakker J: The first demonstration of lactic acid in human blood in shock by Johann Joseph Scherer (1814–1869) in January 1843. *Intensive Care Med* 2007; 33:1967–71
2. Schuster HP: Prognostic value of blood lactate in critically ill patients. *Resuscitation* 1984; 11:141–6
3. Jansen TC, van Bommel J, Bakker J: Blood lactate monitoring in critically ill patients: A systematic health technology assessment. *Crit Care Med* 2009; 37:2827–39
4. Levy B: Bench-to-bedside review: Is there a place for epinephrine in septic shock? *Crit Care* 2005; 9:561–5
5. Rodrigo GJ, Rodrigo C: Elevated plasma lactate level associated with high dose inhaled albuterol therapy in acute severe asthma. *Emerg Med J* 2005; 22:404–8
6. Mikkelsen ME, Miltiades AN, Gaieski DF, Goyal M, Fuchs BD, Shah CV, Bellamy SL, Christie JD: Serum lactate is associated with mortality in severe sepsis independent of organ failure and shock. *Crit Care Med* 2009; 37:1670–7
7. Filho RR, Rocha LL, Corrêa TD, Pessoa CM, Colombo G, Assuncao MS: Blood lactate levels cutoff and mortality prediction in sepsis—Time for a reappraisal? A retrospective cohort study. *Shock* 2016; 46:480–5
8. Sevransky JE, Sprung CL, Nunnally ME, Rochweg B, Rubinfeld GD, Angus DC, Annane D, Beale RJ, Bellinghan GJ, Bernard GR, Chiche J-D, Coopersmith C, DeBacker DP, French C, Fujishima S, Gerlach H, Hidalgo JL, Hollenberg SM, Jones AE, Karnad DR, Kleinpell RM, Koh Y, Lisboa TC, Machado FR, Marini JJ, Marshall, John C, Mazuski, JE, McIntyre LA, McLean AS, Mehta S, Moreno RP, Myburgh J, Navalesi P, Nishida O, Osborn TM, Perner A, Plunkett CM, Ranieri M, Schorr CA, Seckel MA, Seymour CW, Shieh L, Shukri KA, Simpson SQ, Singer M, Thompson BT, Townsend SR, Van der Poll T, Vincent J-L, Wiersinga WJ, Zimmerman JL, Dellinger R P: Surviving Sepsis Campaign: International Guidelines for Management of Sepsis and Septic Shock: 2016. *Crit Care Med* 2017; 45:486–52
9. Levy B: Lactate and shock state: The metabolic view. *Curr Opin Crit Care* 2006; 12:315–21
10. Rozier MD, Zata VJ, Ellsworth ML: Lactate interferes with ATP release from red blood cells. *Am J Physiol Heart Circ Physiol* 2007; 292:H3038–42
11. Brooks GA: Cell-cell and intracellular lactate shuttles. *J Physiol* 2009; 587(pt 23):5591–600
12. Descalzi G, Gao V, Steinman MQ, Suzuki A, Alberini CM: Lactate from astrocytes fuels learning-induced mRNA translation in excitatory and inhibitory neurons. *Commun Biol* 2019; 2:247
13. Riske L, Thomas RK, Baker GB, Dursun SM: Lactate in the brain: An update on its relevance to brain energy, neurons, glia and panic disorder. *Ther Adv Psychopharmacol* 2017; 7:85–9
14. Bellomo R: Bench-to-bedside review: Lactate and the kidney. *Crit Care* 2002; 6:322–6
15. Bakker J, Nijsten MW, Jansen TC: Clinical use of lactate monitoring in critically ill patients. *Ann Intensive Care* 2013; 3:12
16. Madias NE: Lactic acidosis. *Kidney Int* 1986; 29:752–74
17. Réminiac F, Saint-Etienne C, Runge I, Ayé DY, Benzekri-Lefevre D, Mathonnet A, Boulain T: Are central venous lactate and arterial lactate interchangeable? A human retrospective study. *Anesth Analg* 2012; 115:605–10
18. Assuncao M, Nascente A, Guede C, Mazza B, Jacki M, Fernandez H, Machado F: Lactate levels from arterial, central venous and peripheral venous blood in severe sepsis and septic shock patients. *Crit Care* 2007; 11:P452
19. Zitek T, Skaggs ZD, Rahbar A, Patel J, Khan M: Does intravenous lactated Ringer's solution raise serum lactate? *J Emerg Med* 2018; 55:313–8
20. Cohen RD, Woods HF: *Clinical and Biochemical Aspects of Lactic Acidosis*. Oxford, Blackwell Scientific Publications Ltd, 1976
21. Smith ZR, Horng M, Rech MA: Medication-induced hyperlactatemia and lactic acidosis: A systematic review of the literature. *Pharmacotherapy* 2019; 39:946–63
22. Hobler KE, Carey LC: Effect of acute progressive hypoxemia on cardiac output and plasma excess lactate. *Ann Surg* 1973; 177:199–202

23. Hernandez G, Bellomo R, Bakker J: The ten pitfalls of lactate clearance in sepsis. *Intensive Care Med* 2019; 45:82–5
24. Goodwin ML, Harris JE, Hernández A, Gladden LB: Blood lactate measurements and analysis during exercise: A guide for clinicians. *J Diabetes Sci Technol* 2007; 1:558–69
25. Lipka K, Bülow HH: Lactic acidosis following convulsions. *Acta Anaesthesiol Scand* 2003; 47:616–8
26. Andersen LW, Mackenhauer J, Roberts JC, Berg KM, Cocchi MN, Donnino MW: Etiology and therapeutic approach to elevated lactate levels. *Mayo Clin Proc* 2013; 88:1127–40
27. Jauchem JR: Blood lactate concentration after exposure to conducted energy weapons (including TASER® devices): Is it clinically relevant? *Forensic Sci Med Pathol* 2013; 9:386–94
28. Yang CC, Chan KS, Tseng KL, Weng SF: Prognosis of alcohol-associated lactic acidosis in critically ill patients: An 8-year study. *Sci Rep* 2016; 6:35368
29. Baud FJ, Haidar MK, Jouffroy R, Raphalen JH, Lamhaut L, Carli P: Determinants of lactic acidosis in acute cyanide poisonings. *Crit Care Med* 2018; 46:e523–9
30. Lalau JD, Arnouts P, Sharif A, De Broe ME: Metformin and other antidiabetic agents in renal failure patients. *Kidney Int* 2015; 87:308–22
31. Pasma RA, Frøslev T, Jespersen B, van der Horst ICC, Touw DJ, Thomsen RW, Nijsten MW, Christiansen CF: Prognostic impact of elevated lactate levels on mortality in critically ill patients with and without preadmission metformin treatment: A Danish registry-based cohort study. *Ann Intensive Care* 2020; 10:36
32. Ensinger H, Geisser W, Brinkmann A, Wachter U, Vogt J, Radermacher P, Georgieff M, Träger K: Metabolic effects of norepinephrine and dobutamine in healthy volunteers. *Shock* 2002; 18:495–500
33. Day NP, Phu NH, Bethell DP, Mai NT, Chau TT, Hien TT, White NJ: The effects of dopamine and adrenaline infusions on acid-base balance and systemic haemodynamics in severe infection. *Lancet* 1996; 348:219–23
34. Hemphill S, McMenamin L, Bellamy MC, Hopkins PM: Propofol infusion syndrome: A structured literature review and analysis of published case reports. *Br J Anaesth* 2019; 122:448–59
35. Rozet I, Tontisirin N, Vavilala MS, Treggiari MM, Lee LA, Lam AM: Prolonged propofol anesthesia is not associated with an increase in blood lactate. *Anesth Analg* 2009; 109:1105–10
36. Montagnana M, Danese E, Lippi G: Biochemical markers of acute intestinal ischemia: possibilities and limitations. *Ann Transl Med* 2018; 6:341
37. Chou CK, Lee YT, Chen SM, Hsieh CW, Huang TC, Li YC, Lee JA: Elevated urinary D-lactate levels in patients with diabetes and microalbuminuria. *J Pharm Biomed Anal* 2015; 116:65–70
38. Gertz EW, Wisneski JA, Stanley WC, Neese RA: Myocardial substrate utilization during exercise in humans. Dual carbon-labeled carbohydrate isotope experiments. *J Clin Invest* 1988; 82:2017–25
39. Kempainen J, Fujimoto T, Kalliokoski KK, Viljanen T, Nuutila P, Knuuti J: Myocardial and skeletal muscle glucose uptake during exercise in humans. *J Physiol* 2002; 542(pt 2):403–12
40. Levy B, Mansart A, Montemont C, Gibot S, Mallie JP, Regnault V, Lecompte T, Lacolley P: Myocardial lactate deprivation is associated with decreased cardiovascular performance, decreased myocardial energetics, and early death in endotoxic shock. *Intensive Care Med* 2007; 33:495–502
41. Petersen C: D-lactic acidosis. *Nutr Clin Pract* 2005; 20:634–45
42. Levraut J, Ciebiera JP, Chave S, Rabary O, Jambou P, Carles M, Grimaud D: Mild hyperlactatemia in stable septic patients is due to impaired lactate clearance rather than overproduction. *Am J Respir Crit Care Med* 1998; 157(4 pt 1):1021–6
43. Fuller BM, Dellinger RP: Lactate as a hemodynamic marker in the critically ill. *Curr Opin Crit Care* 2012; 18:267–72
44. Weil MH, Afifi AA: Experimental and clinical studies on lactate and pyruvate as indicators of the severity of acute circulatory failure (shock). *Circulation* 1970; 41:989–1001
45. McNelis J, Marini CP, Jurkiewicz A, Szomstein S, Simms HH, Ritter G, Nathan IM: Prolonged lactate clearance is associated with increased mortality in the surgical intensive care unit. *Am J Surg* 2001; 182:481–5
46. Levy MM, Evans LE, Rhodes A: The Surviving Sepsis Campaign Bundle: 2018 Update. *Crit Care Med* 2018; 46:997–1000
47. Kelm DJ, Perrin JT, Cartin-Ceba R, Gajic O, Schenck L, Kennedy CC: Fluid overload in patients with severe sepsis and septic shock treated with early goal-directed therapy is associated with increased acute need for fluid-related medical interventions and hospital death. *Shock* 2015; 43:68–73
48. Marik PE, Linde-Zwirble WT, Bittner EA, Sahatjian J, Hansell D: Fluid administration in severe sepsis and septic shock, patterns and outcomes: An analysis of a large national database. *Intensive Care Med* 2017; 43:625–32
49. Rivers E, Nguyen B, Havstad S, Ressler J, Muzzin A, Knoblich B, Peterson E, Tomlanovich M; Early Goal-Directed Therapy Collaborative Group: Early goal-directed therapy in the treatment of severe sepsis and septic shock. *N Engl J Med* 2001; 345:1368–77
50. Bisarya R, Shaath D, Pirzad A, Satterwhite L, He J, Simpson SQ: Serum lactate poorly predicts central venous oxygen saturation in critically ill patients: A retrospective cohort study. *J Intensive Care* 2019; 7:47

51. Arnold RC, Shapiro NI, Jones AE, Schorr C, Pope J, Casner E, Parrillo JE, Dellinger RP, Trezeciak S; Emergency Medicine Shock Research Network (EMShockNet) Investigators: Multicenter study of early lactate clearance as a determinant of survival in patients with presumed sepsis. *Shock* 2009; 32:35–9
52. Hernández G, Ospina-Tascón GA, Damiani LP, Estenssoro E, Dubin A, Hurtado J, Friedman G, Castro R, Alegría L, Teboul JL, Cecconi M, Ferri G, Jibaja M, Pairumani R, Fernández P, Barahona D, Granda-Luna V, Cavalcanti AB, Bakker J, Hernández G, Ospina-Tascón G, Petri Damiani L, Estenssoro E, Dubin A, Hurtado J, Friedman G, Castro R, Alegría L, Teboul JL, Cecconi M, Cecconi M, Ferri G, Jibaja M, Pairumani R, Fernández P, Barahona D, Cavalcanti AB, Bakker J, Hernández G, Alegría L, Ferri G, Rodríguez N, Holger P, Soto N, Pozo M, Bakker J, Cook D, Vincent JL, Rhodes A, Kavanagh BP, Dellinger P, Rietdijk W, Carpio D, Pavéz N, Henriquez E, Bravo S, Valenzuela ED, Vera M, Dreyse J, Oviedo V, Cid MA, Larroulet M, Petruska E, Sarabia C, Gallardo D, Sanchez JE, González H, Arancibia JM, Muñoz A, Ramirez G, Aravena F, Aquevedo A, Zambrano F, Bozinovic M, Valle F, Ramirez M, Rossel V, Muñoz P, Ceballos C, Esveile C, Carmona C, Candia E, Mendoza D, Sanchez A, Ponce D, Ponce D, Lastra J, Nahuelpan B, Fasce F, Luengo C, Medel N, Cortés C, Campassi L, Rubatto P, Horna N, Furche M, Pendino JC, Bettini L, Lovesio C, González MC, Rodríguez J, Canales H, Caminos F, Galletti C, Minoldo E, Aramburu MJ, Olmos D, Nin N, Tenzi J, Quiroga C, Lacuesta P, Gaudín A, Pais R, Silvestre A, Olivera G, Rieppi G, Berrutti D, Ochoa M, Cobos P, Vintimilla F, Ramirez V, Tobar M, García F, Picoita F, Remache N, Granda V, Paredes F, Barzallo E, Garcés P, Guerrero F, Salazar S, Torres G, Tana C, Calahorrano J, Solís F, Torres P, Herrera L, Ornes A, Pérez V, Delgado G, López A, Espinosa E, Moreira J, Salcedo B, Villacres I, Suing J, Lopez M, Gomez L, Toctaquiza G, Cadena Zapata M, Orazabal MA, Pardo Espejo R, Jimenez J, Calderón A, Paredes G, Barberán JL, Moya T, Atehortua H, Sabogal R, Ortiz G, Lara A, Sanchez F, Hernán Portilla A, Dávila H, Mora JA, Calderón LE, Alvarez I, Escobar E, Bejarano A, Bustamante LA, Aldana JL; The ANDROMEDA SHOCK Investigators and the Latin America Intensive Care Network (LIVEN): Effect of a resuscitation strategy targeting peripheral perfusion status vs serum lactate levels on 28-day mortality among patients with septic shock: The ANDROMEDA-SHOCK Randomized Clinical Trial. *JAMA* 2019; 321:654–64
53. Levy B, Sadoune LO, Gelot AM, Bollaert PE, Nabet P, Larcan A: Evolution of lactate/pyruvate and arterial ketone body ratios in the early course of catecholamine-treated septic shock. *Crit Care Med* 2000; 28:114–9
54. Jansen TC, van Bommel J, Schoonderbeek FJ, Sleswijk Visser SJ, van der Klooster JM, Lima AP, Willemsen SP, Bakker J; LACTATE Study Group: Early lactate-guided therapy in intensive care unit patients: A multicenter, open-label, randomized controlled trial. *Am J Respir Crit Care Med* 2010; 182:752–61
55. Jaber S, Paugam C, Futier E, Lefrant JY, Lasocki S, Lescot T, Pottecher J, Demoule A, Ferrandière M, Asehnoune K, Dellamonica J, Velly L, Abback PS, de Jong A, Brunot V, Belafia F, Roquilly A, Chanques G, Muller L, Constantin JM, Bertet H, Klouche K, Molinari N, Jung B; BICAR-ICU Study Group: Sodium bicarbonate therapy for patients with severe metabolic acidemia in the intensive care unit (BICAR-ICU): A multicentre, open-label, randomised controlled, phase 3 trial. *Lancet* 2018; 392:31–40
56. Ventetuolo CE, Klinger JR: Management of acute right ventricular failure in the intensive care unit. *Ann Am Thorac Soc* 2014; 11:811–22
57. Stacpoole PW: Lactic acidosis: the case against bicarbonate therapy. *Ann Intern Med* 1986; 105:276–9
58. Marik PE: Vitamin C for the treatment of sepsis: The scientific rationale. *Pharmacol Ther* 2018; 189:63–70
59. Woolum JA, Abner EL, Kelly A, Thompson Bastin ML, Morris PE, Flannery AH: Effect of thiamine administration on lactate clearance and mortality in patients with septic shock. *Crit Care Med* 2018; 46:1747–52
60. Chang P, Liao Y, Guan J, Guo Y, Zhao M, Hu J, Zhou J, Wang H, Cen Z, Tang Y, Liu Z: Combined treatment with hydrocortisone, vitamin C, and thiamine for sepsis and septic shock: A randomized controlled trial. *Chest* 2020; 158:174–82
61. Fujii T, Luethi N, Young PJ, Frei DR, Eastwood GM, French CJ, Deane AM, Shehabi Y, Hajar LA, Oliveira G, Udy AA, Orford N, Edney SJ, Hunt AL, Judd HL, Bitker L, Ciocari L, Naorungroj T, Yanase F, Bates S, McGain F, Hudson EP, Al-Bassam W, Dwivedi DB, Peppin C, McCracken P, Orosz J, Bailey M, Bellomo R; VITAMINS Trial Investigators: Effect of vitamin C, hydrocortisone, and thiamine vs hydrocortisone alone on time alive and free of vasopressor support among patients with septic shock: The VITAMINS Randomized Clinical Trial. *JAMA* 2020; 323:423–31