



Hypoglycemia at Admission in Patients With Acute Myocardial Infarction Predicts a Higher 30-Day Mortality in Patients With Poorly Controlled Type 2 Diabetes Than in Well-Controlled Patients

Diabetes Care 2014;37:2366–2373 | DOI: 10.2337/dc13-2856

Sang Ah Lee,¹ Suk Ju Cho,² Myung Ho Jeong,³ Young Jo Kim,⁴ Chong Jin Kim,⁵ Myeong Chan Cho,⁶ Hyo-Soo Kim,⁷ Youngkeun Ahn,³ Gwanpyo Koh,¹ Jeong mi Lee,⁸ Seok Kyu Oh,⁹ Kyeong Ho Yun,⁹ Ha Young Kim,⁹ Chung Gu Cho,⁹ and Dae Ho Lee,⁹ on behalf of the KAMIR/KorMI Registry*

OBJECTIVE

We aimed to evaluate the association between hypoglycemia at admission and 30-day mortality in patients with acute myocardial infarction (AMI) and to determine whether these associations differed according to diabetes-control status in AMI patients with diabetes.

RESEARCH DESIGN AND METHODS

We analyzed the prognostic significance of hypoglycemia and hyperglycemia in 34,943 AMI patients with or without type 2 diabetes from two AMI registries: the Korea Acute Myocardial Infarction Registry (KAMIR) and the Korea Working Group on Myocardial Infarction (KorMI).

RESULTS

The patients were divided into five groups according to serum-glucose levels at admission: <3.9 mmol/L (<70 mg/dL); 3.9–7.72 mmol/L (70–139 mg/dL); 7.78–11.06 mmol/L (140–199 mg/dL); 11.11–14.39 mmol/L (200–259 mg/dL); and ≥14.44 mmol/L (≥260 mg/dL). The 30-day mortality rates in the lowest and highest glucose groups were higher than those in other groups; the lowest glucose group had the highest mortality for patients with type 2 diabetes, after adjusting for multiple factors. We also extracted and compared four subgroups from the patients with type 2 diabetes, based on hemoglobin A1c and serum-glucose levels at admission: group A, <6.5% (48 mmol/mol) and <3.9 mmol/L; group B, <6.5% (48 mmol/mol) and ≥11.11 mmol/L; group C, ≥8% (64 mmol/mol) and <3.9 mmol/L; and group D, ≥8% (64 mmol/mol) and ≥11.11 mmol/L. Group C had the highest 30-day mortality rate among the groups.

CONCLUSIONS

These data suggest that hypoglycemia at admission affects clinical outcomes differently in AMI patients with type 2 diabetes depending on the diabetes-control status.

¹Department of Internal Medicine, Jeju National University Hospital, Jeju National School of Medicine, Jeju, Republic of Korea

²Department of Anesthesiology, Jeju National University Hospital, Jeju National School of Medicine, Jeju, Republic of Korea

³Department of Internal Medicine, Chonnam National University Hospital, Gwangju, Republic of Korea

⁴Department of Internal Medicine, Yeungnam University Hospital, Daegu, Republic of Korea

⁵Department of Internal Medicine, Kyung Hee University Hospital, Seoul, Republic of Korea

⁶Department of Internal Medicine, Chungbuk National University Hospital, Cheongju, Republic of Korea

⁷Department of Internal Medicine, Seoul National University Hospital, Seoul, Republic of Korea

⁸Department of Public Health, Wonkwang University, Iksan, Republic of Korea

⁹Department of Internal Medicine, Wonkwang University School of Medicine, Iksan, Republic of Korea

Corresponding author: Dae Ho Lee, drhormone@naver.com, or Myung Ho Jeong, myungho@chollian.net.

Received 5 December 2013 and accepted 2 April 2014.

This article contains Supplementary Data online at <http://care.diabetesjournals.org/lookup/suppl/doi:10.2337/dc13-2856/-/DC1>.

*A complete list of the Korea Acute Myocardial Infarction Registry (KAMIR) and Korea Working Group on Myocardial Infarction (KorMI) investigators can be found in the Supplementary Data online.

© 2014 by the American Diabetes Association. Readers may use this article as long as the work is properly cited, the use is educational and not for profit, and the work is not altered.

Hyperglycemia is a well established predictor of mortality in patients with acute myocardial infarction (AMI) with or without diabetes (1–3). However, many clinical studies have failed to show that the intensive management of hyperglycemia provides specific mortality benefit to the hospitalized patients with AMI (4–6). Because intensive glucose control increases the risk of severe hypoglycemia (7), there have been consistent questions about whether hypoglycemia induces cardiovascular (CV) disease, thus leading to the dilution of the potential benefit of intensive glucose control in high-risk patients.

A frequently suggested but unconfirmed mechanism by which hypoglycemia might lead to fatality during CV events is QT interval prolongation on an electrocardiogram. This phenomenon seems to be precipitated by increased levels of circulating catecholamines and hypokalemia (8,9), although a recent study demonstrated that hypokalemia does not play an important role in the development of QT prolongation during severe hypoglycemia (10). Other possible mechanisms have also been listed: hemodynamic changes caused by increased sympathetic activity, platelet activation and aggregation, a rise in factor VIII and von Willebrand factor levels, and increases in the circulating levels of interleukins, cytokines, markers of endothelial dysfunction including endothelin-1, and reactive oxygen species (7,11). More complicating is that hypoglycemia might be a sign of vulnerability to CV morbidity and mortality, as well as other grave diseases (12–14). Therefore, because hypoglycemia can be a cause, a marker of severity, and an aggravating factor in AMI patients (7,15), understating hypoglycemia during an AMI event has important clinical relevance for the management of AMI and stress hyperglycemia.

Several studies have shown that hypoglycemia increased the mortality rates in AMI patients with or without diabetes (3,16,17), whereas others studies disagreed (1,4,18,19). The different results might arise from heterogeneities in the study protocols, such as admission or postadmission hypoglycemia; spontaneous or insulin treatment-related hypoglycemia; in-hospital or long-term mortality; different degrees

or definitions of hypoglycemia or target goals for glycemic control during the hospitalization period; and diabetic or nondiabetic subjects (16–18).

Although hypoglycemia at admission was shown to predict death at 30 days in patients with AMI (3,17), it is unclear whether postadmission hypoglycemia or insulin therapy-induced hypoglycemia consistently increases mortality during hospitalization in AMI patients (17,20).

Additionally, diabetes and its control status may differentially affect the death rate in AMI patients who present with admission hypoglycemia. Although there have been a few reports that admission hypoglycemia is more strongly associated with higher mortality in AMI patients with diabetes than in nondiabetic subjects (17,21), no studies have addressed whether admission hypoglycemia in AMI patients with diabetes has different effects on mortality depending on the level of diabetes control before admission.

In the current study, we aimed to evaluate the association between admission hypoglycemia and 30-day mortality in AMI patients and to determine whether these associations differed according to the preadmission diabetes-control status in AMI patients with type 2 diabetes mellitus.

RESEARCH DESIGN AND METHODS

These data were obtained from the Korea Acute Myocardial Infarction Registry (KAMIR) and the Korea Working Group on Myocardial Infarction (KorMI), which are prospective multicenter, observational registries designed to study the current epidemiology of hospital management and AMI outcomes in Korea. KAMIR (2005–2008; $n = 11,062$) and KorMI (2008–2012; $n = 23,881$) contain ~1 year of clinical follow-up data regarding primary percutaneous coronary interventions (PCIs) in 53 community and university hospitals, as described previously (22,23). The registries include patients suffering from AMI, including both ST-segment elevation myocardial infarction and non-ST-segment elevation myocardial infarction. AMI was diagnosed if the patients met the following criteria: 1) at least one positive cardiac biochemical marker of necrosis (including creatine kinase MB and troponin I and T); and 2) typical symptoms

compatible with AMI and/or new or presumed new ST-segment elevation of at least 1 mm at any location or a new left bundle-branch block on the index or subsequent electrocardiogram (22,23). These registries were supported by KorMI, shared with many community and university hospitals, and used similar treatment protocols based on the American College of Cardiology/American Heart Association guidelines (24). We merged the two registries to maximize the statistical power. After the KAMIR registry, there were some protocol amendments to the KorMI registry, including regular laboratory measurements (at 6, 12, 24, and 36 months) and long-term follow-up scheduled for up to 3 years. These study protocols were reviewed and approved by the Institutional Review Board at each participating center. All KorMI participants provided written informed consent.

The database is comprehensive and includes demographic features, medical history, clinical characteristics, laboratory findings, clinical performance, and angiographic findings. Blood samples without lipid profiles were collected at admission or before PCI. Overnight fasting blood was drawn for lipid measurements.

We divided the total cohort into two groups, the type 2 diabetes mellitus and nondiabetic groups. Type 2 diabetes was defined by the patient-reported history (medical treatment, age of diabetes onset ≥ 30 years, and the absence of a history of ketoacidosis), medical records, or by a hemoglobin A_{1c} (HbA_{1c}) level $\geq 6.5\%$ (48 mmol/mol) in patients with no history of diabetes, no features of diabetic ketoacidosis, and an age ≥ 30 years. We then stratified each group into five subgroups (groups 1–5) according to the serum-glucose level at admission: <3.9 mmol/L (<70 mg/dL); 3.9–7.72 mmol/L (70–139 mg/dL); 7.78–11.06 mmol/L (140–199 mg/dL); 11.11–14.39 mmol/L (200–259 mg/dL); and ≥ 14.44 mmol/L (≥ 260 mg/dL).

We also extracted and compared four subgroups of patients with type 2 diabetes, based on the HbA_{1c} and serum-glucose levels at admission: group A, $<6.5\%$ (48 mmol/mol) and <3.9 mmol/L (<70 mg/dL); group B, $<6.5\%$ (48 mmol/mol) and ≥ 11.11 mmol/L (≥ 200 mg/dL); group C, $\geq 8.0\%$ (64 mmol/mol) and <3.9 mmol/L (<70

mg/dL); and group D, $\geq 8.0\%$ (64 mmol/mol) and ≥ 11.11 mmol/L (≥ 200 mg/dL). We defined serum-glucose levels < 3.9 mmol/L (< 70 mg/dL) as hypoglycemia and ≥ 11.11 mmol/L (≥ 200 mg/dL) as hyperglycemia; HbA_{1c} $< 6.5\%$ (48 mmol/mol) was defined as a well-controlled diabetes, and HbA_{1c} $> 8\%$ (64 mmol/mol) was defined as a poorly controlled diabetes.

The primary study outcome was 30-day all-cause mortality. Mortality was assessed during sentinel hospitalization using chart reviews and 30 days after presentation with AMI using mortality registry data.

Statistical Analysis

The continuous variables were expressed as the mean \pm SEM and analyzed with Student *t* test and an ANOVA. Categorical variables were expressed as numbers (percent) and compared with χ^2 test or Fisher exact test as appropriate. The cumulative incidence of adverse events was estimated according to the Kaplan-Meier method, and the significance level was assessed with the log-rank test. We performed a Cox proportional hazards regression analysis to find independent factors related to mortality in AMI patients and to compare survival in AMI patients after adjusting for multiple factors. Cox proportional hazards regression analyses were performed to estimate the hazard ratios (HRs) and associated 95% CIs. Statistical significance was assumed at $P < 0.05$. The statistical analysis was performed with SPSS version 18.0 (SPSS Inc., Chicago, IL).

RESULTS

Clinical Characteristics of Study Patients

All patients had AMI that was properly managed with medication, thrombolysis, and/or PCIs according to American College of Cardiology/American Heart Association guidelines (24,25). We divided a total of 34,943 patients into two groups, the type 2 diabetic ($n = 20,714$) and nondiabetic groups ($n = 14,229$). The baseline clinical characteristics of the study subjects are shown in Table 1. The mean ages were 64.1 years for the type 2 diabetic group and 63.3 years for the nondiabetic group. The first treatment was primary PCI in 90.26% of the nondiabetic group and

Table 1—Baseline characteristics of the study subjects ($n = 34,943$)

	Nondiabetic ($n = 14,229$)	Type 2 diabetic ($n = 20,714$)	<i>P</i> value
Age (years)	63.31 \pm 0.47	64.09 \pm 0.08	< 0.001
Sex (female)	44.71%	37.25%	0.001
BMI (kg/m ²)	23.73 \pm 0.03	23.89 \pm 0.03	< 0.001
sBP (mmHg)	128.51 \pm 0.28	128.48 \pm 0.26	0.910
dBp (mmHg)	78.77 \pm 0.24	78.13 \pm 0.23	< 0.001
HbA _{1c} (%)	5.75 \pm 0.01	7.76 \pm 0.02	< 0.001
HbA _{1c} (mmol/mol)	39.45 \pm 0.11	61.32 \pm 0.46	< 0.001
Glucose (mmol/L)	7.92 \pm 0.04	10.52 \pm 0.03	< 0.001
Creatinine (μ mol/L)	99.58 \pm 1.36	114.72 \pm 1.17	< 0.001
TGs (mmol/L)	1.44 \pm 0.01	1.49 \pm 0.01	0.001
HDL cholesterol (mmol/L)	1.16 \pm 0.005	1.15 \pm 0.003	0.005
LDL cholesterol (mmol/L)	3.01 \pm 0.010	2.95 \pm 0.009	< 0.001
hsCRP (mg/L)	3.11 \pm 0.06	3.78 \pm 0.07	< 0.001
Killip class			< 0.001
I	71.47%	72.81%	
II	13.49%	14.44%	
III	9.54%	7.31%	
IV	5.49%	5.44%	
Hypertension	52.23%	48.57%	< 0.001
Smoking	40.68%	43.27%	< 0.001
Previous MI	7.94%	6.13%	< 0.001
HF	2.56%	1.67%	< 0.001
PAD	1.11%	0.54%	< 0.001
CVA	7.62%	6.37%	< 0.001
Statin	65.19%	73.85%	< 0.001
Aspirin	14.89%	13.40%	< 0.001
Clopidogrel	4.89%	5.80%	< 0.001
Hypertension treatment	89.44%	89.38%	0.478
β -Blocker	9.07%	7.39%	< 0.001
ACE inhibitor/ARB	94.085%	94.82%	0.101
CCB	10.85%	8.75%	< 0.001
Nitrate	5.23%	3.42%	< 0.001
Thrombolysis	3.61%	6.69%	< 0.001
Primary PCI	90.26%	79.87%	< 0.001

ARB, angiotensin receptor blocker; CCB, calcium channel blocker.

in 79.87% of the type 2 diabetic group. Thrombolysis was performed in 3.61% of the nondiabetic group and in 6.69% of the type 2 diabetic group. Conservative treatment was administered to 10.68% of the type 2 diabetic group and 3.75% of the nondiabetic group. The 30-day mortality rate was higher in the nondiabetic group (4.09%) than in the type 2 diabetic group (3.70%; $P < 0.05$).

Additionally, age, BMI, systolic blood pressure (sBP), heart rate, HDL cholesterol, Killip classification, known hypertension, known peripheral artery disease (PAD), cerebrovascular accident (CVA), LDL cholesterol, high-sensitivity C-reactive protein (hsCRP), admission serum-glucose level, and serum creatinine

were also shown to affect the 30-day mortality. After adjusting for the above-mentioned factors and sex, hypertension medication, dyslipidemia, diastolic blood pressure (dBp), the use of aspirin and statins, total cholesterol, triglycerides (TGs), previous history of MI, and known heart failure (HF), the 30-day mortality was higher in patients with type 2 diabetes compared with patients without diabetes.

The 30-Day Mortality of AMI Patients Showed a U-Shaped Relationship With Serum-Glucose Levels at Admission

The entire cohort of 34,943 patients was divided into five groups according to the serum-glucose levels at admission: < 3.9

mmol/L (<70 mg/dL; $n = 409$, group 1); 3.9–7.72 mmol/L (70–139 mg/dL; $n = 15,215$, group 2); 7.78–11.06 mmol/L (140–199 mg/dL; $n = 10,316$, group 3); 11.11–14.39 mmol/L (200–259 mg/dL; $n = 4,173$, group 4); and ≥ 14.44 mmol/L (≥ 260 mg/dL; $n = 4,139$, group 5). The 30-day mortality rates of the five glucose groups were 13.93, 3.08, 5.09, 7.40, and 14.87% in groups 1, 2, 3, 4, and 5, respectively. The 30-day mortality rates showed a U-shape distribution according to the glucose levels at admission in not only the entire AMI patient cohort (Fig. 1A), but also both the nondiabetic and type 2 diabetic groups (Fig. 1B). The clinical characteristics of each of the five glucose subgroups of AMI patients with type 2 diabetes and without diabetes are presented in Supplementary Tables 1 and 2. It is worth noting that nondiabetic patients in group 5 more frequently had a Killip class $>II$ compared with the patients in other glucose groups (Supplementary Table 2). Regarding group 5, the group with the highest glycemic level, the 30-day mortality rates were 26.39% for the patients without diabetes and 12.14% for the patients with type 2 diabetes, with a significant difference between the nondiabetic and type 2 diabetic patients ($P < 0.001$).

Next, we compared the 30-day mortality rates among the five groups using Cox proportional hazards regression models after adjusting for multiple factors, including age, sex, BMI, hypertension, hypertensive medication use, dyslipidemia, sBP, dBP, Killip class, aspirin use, statin use, hsCRP, smoking, total

cholesterol, TGs, HDL cholesterol, LDL cholesterol, serum creatinine, PAD, CVA, previous MI, and HF. We defined group 2 (serum glucose 3.9–7.72 mmol/L) as the reference group because this group had the lowest 30-day mortality rate among the five groups. After adjusting for multiple factors, group 1, the group with hypoglycemia, showed the highest 30-day mortality (HR 2.157 [95% CI 1.222–3.807]; $P = 0.008$). Group 5, the group with severe hyperglycemia, also had increased 30-day mortality (HR 1.869 [95% CI 1.416–2.468]; $P < 0.001$). However, the 30-day mortality rates of groups 3 and 4 were similar to that of group 2.

The trends in the 30-day mortality rates of the five subgroups from both the nondiabetic and type 2 diabetic groups were similar to those observed in the total patient cohort. The HRs for groups 1 and 5 were 4.777 (95% CI 2.090–10.918; $P < 0.01$) and 2.548 (95% CI 1.624–4.000; $P < 0.01$), respectively, in the nondiabetic group, and 2.866 (95% CI 1.564–5.250; $P < 0.01$) and 1.616 (95% CI 1.222–2.141; $P < 0.01$), respectively, in the type 2 diabetic group.

Both Hypoglycemia and Hyperglycemia Are Independent Predictors of 30-Day Mortality in AMI Patients

After adjusting for multiple factors, we performed a multivariate Cox proportional hazards regression analysis to identify the independent factors associated with 30-day mortality in the nondiabetic and type 2 diabetic AMI patients (Supplementary Table 3). Both

hypoglycemia (<3.9 mmol/L) and hyperglycemia (≥ 14.44 mmol/L) were strong independent factors associated with 30-day mortality in both AMI patient groups. The risk associated with hypoglycemia was comparable to that associated with Killip class level. In addition to glycemic parameters, other previously well-known factors, including older age, lower sBP, a high Killip class ($\geq III$), CVA history, and a higher hsCRP level were risk factors related to higher 30-day mortality in both AMI patient groups. Furthermore, in the nondiabetic AMI group, HF and PAD were significant risk factors related to 30-day mortality. In patients with type 2 diabetes, a previous MI, no aspirin use, and higher creatinine levels were additional independent factors associated with higher 30-day mortality.

We analyzed the 30-day cumulative survival with a Cox proportional hazards regression model (Fig. 2A and B). After adjusting for age, sex, BMI, hypertension, hypertensive medication use, dyslipidemia, sBP, dBP, Killip class, aspirin use, statin use, hsCRP, smoking, total cholesterol, TGs, HDL cholesterol, LDL cholesterol, serum creatinine, PAD, CVA, previous MI history, and HF, both hypoglycemia (<3.9 mmol/L) and hyperglycemia (groups 4 and 5) at admission were shown to decrease cumulative survival in the nondiabetic AMI group (Fig. 2A). However, in patients with type 2 diabetes, hypoglycemia (<3.9 mmol/L) had a more prominent effect than hyperglycemia on the 30-day cumulative survival rate after AMI events. Furthermore, in patients with

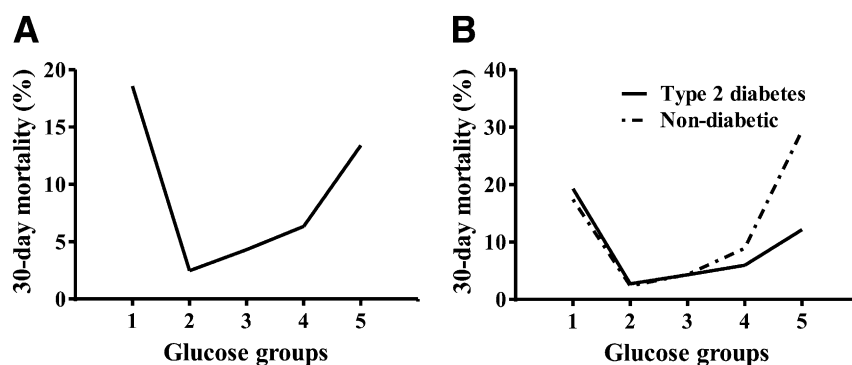


Figure 1—The 30-day mortality rates of the five glucose-based groups among the total AMI patient cohort ($n = 34,943$) (A) and the AMI patients with ($n = 20,714$) and without type 2 diabetes ($n = 14,229$) (B). The five glucose subgroups of AMI patients were categorized according to the admission serum-glucose levels, as follows: group 1, <3.9 mmol/L (<70 mg/dL); group 2, 3.9–7.72 mmol/L (70–139 mg/dL); group 3, 7.78–11.06 mmol/L (140–199 mg/dL); group 4, 11.11–14.39 mmol/L (200–259 mg/dL); and group 5, ≥ 14.44 mmol/L (≥ 260 mg/dL).

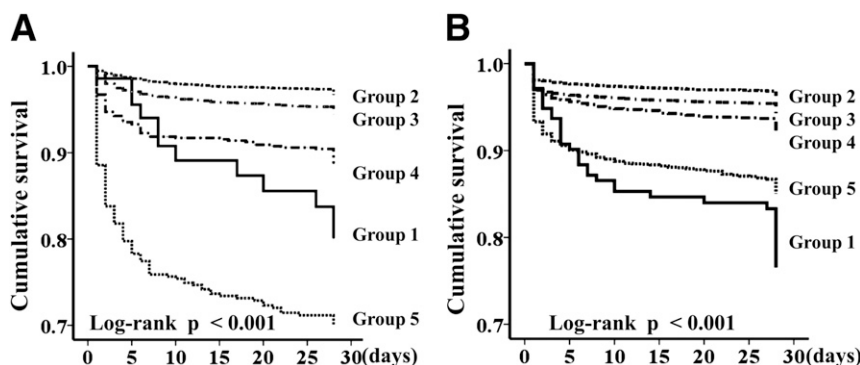


Figure 2—Cumulative survival curves according to the admission glucose levels in nondiabetic AMI patients (A) and AMI patients with type 2 diabetes (B). The five glucose groups are described in Fig. 1 and RESEARCH DESIGN AND METHODS.

type 2 diabetes, only severe hyperglycemia (group 5) was shown to decrease the 30-day cumulative survival after AMI events (Fig. 2B).

Additionally, we analyzed the association between HbA_{1c} and cumulative survival 30 days after AMI events in patients with type 2 diabetes. HbA_{1c} was not associated with 30-day cumulative survival after AMI events in these patients (data not shown). Similarly, no such association was observed in the total patient cohort (data not shown).

Hypoglycemia at Admission in Patients With AMI Predicts a Higher 30-Day Mortality in Patients With Poorly Controlled Type 2 Diabetes Than in Well-Controlled Patients

To determine the effects of the diabetes-control status before the AMI event and admission hypoglycemia on mortality in AMI patients with type 2 diabetes, we classified these patients into

four selected subgroups, based on the HbA_{1c} and serum-glucose levels at admission: the well-controlled diabetic and admission hypoglycemic group (group A), with HbA_{1c} <6.5% (48 mmol/mol) and serum glucose <3.9 mmol/L (<70 mg/dL); the well-controlled diabetic and admission hyperglycemic group (group B), with HbA_{1c} <6.5% (48 mmol/mol) and serum glucose ≥11.11 mmol/L (200 mg/dL); the poorly controlled diabetic and admission hypoglycemic group (group C), with HbA_{1c} ≥8.0% (64 mmol/mol) and serum glucose <3.9 mmol/L (<70 mg/dL); and the poorly controlled diabetic and admission hyperglycemic group (group D), with HbA_{1c} ≥8.0% (64 mmol/mol) and serum glucose ≥11.11 mmol/L (200 mg/dL). The clinical characteristics of these four specific subgroups are presented in Supplementary Table 4. No differences in blood pressure, HDL, hsCRP, HF, and the use of aspirin,

ACE inhibitors, angiotensin receptor blockers, or β-blockers were observed among the groups. However, many other factors differed significantly among four groups.

We first used the Kaplan-Meier method (Fig. 3A) to compare cumulative survival among the four specific groups, followed by a Cox proportional hazards regression analysis (Fig. 3B), to compare the independent cumulative survival after adjusting for multiple factors. Interestingly, group C showed a markedly decreased 30-day cumulative survival in both analyses (Fig. 3A and B). After adjusting for multiple factors, group A also showed a decreased 30-day cumulative survival rate in comparison with the two hyperglycemic groups (groups B and D; Fig. 3B).

CONCLUSIONS

In the current study, we observed that both hypoglycemia and hyperglycemia

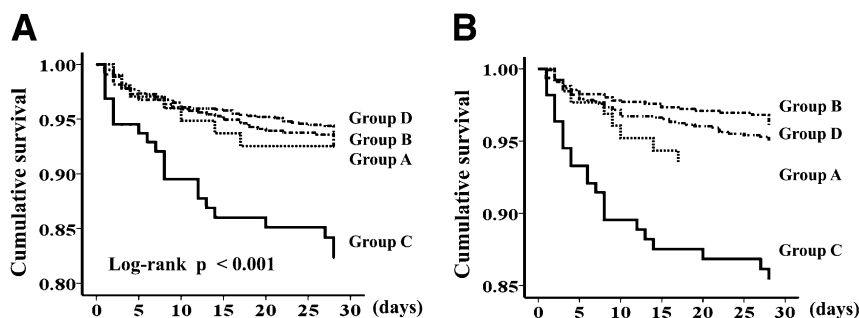


Figure 3—The effects of admission hypoglycemia and the preadmission diabetes-control status on 30-day cumulative survival in AMI patients with type 2 diabetes. Kaplan-Meier survival estimates (A) and the Cox proportional hazards regression analysis (B) after adjusting for age, sex, BMI, hypertension, hypertensive medication use, dyslipidemia, sBP, dBP, Killip class, aspirin use, statin use, hsCRP, smoking, total cholesterol, TGs, HDL cholesterol, LDL cholesterol, serum creatinine, PAD, CVA, previous MI history, and HF. We classified the AMI patients with type 2 diabetes according to the HbA_{1c} and serum-glucose levels at admission as follows: group A, HbA_{1c} <6.5% (48 mmol/mol) and serum glucose <3.9 mmol/L (<70 mg/dL); group B, HbA_{1c} <6.5% (48 mmol/mol) and serum glucose ≥11.11 mmol/L (≥200 mg/dL); group C, HbA_{1c} ≥8.0% (64 mmol/mol) and serum glucose <3.9 mmol/L (<70 mg/dL); and group D, HbA_{1c} ≥8.0% (64 mmol/mol) and serum glucose ≥11.11 mmol/L (≥200 mg/dL).

at admission were associated with increased 30-day mortality in AMI patients with or without type 2 diabetes. In particular, admission hypoglycemia in patients with poorly controlled type 2 diabetes (indicated by a higher HbA_{1c} level) was associated with a markedly decreased 30-day survival rate after an AMI event. However, the HbA_{1c} level alone was not associated with the risk of 30-day mortality in AMI patients with type 2 diabetes.

Several studies have shown that hypoglycemia in AMI patients was associated with increased short- or long-term mortality (16,17,26,27). Our findings are consistent with those of previous studies in which admission hypoglycemia was a predictor of 30-day mortality in AMI patients with diabetes (17). Additionally, many previous studies have shown a J- or U-shaped relationship between glycemia and 30-day mortality in patients with AMI (3,16,17,26). Depending on study protocols, the definition of hypoglycemia and the grouping of the study patients have been different (28). Most studies used a lower cutoff level between 3.33 and 4.44 mmol/L as the definition of hypoglycemia (1,3,17). We observed the most prominent difference in 30-day mortality when we categorized our patients as having hypoglycemia if their serum-glucose level was <3.9 mmol/L. Previous data have consistently indicated that in AMI patients without diabetes, admission blood-glucose levels higher than the euglycemic level are associated with increased short-term mortality after an AMI event; however, the serum-glucose level associated with the lowest early mortality in AMI patients with type 2 diabetes seems to differ according to study population, stage of diabetes, diabetes complications, and comorbid states (28,29). Studies have shown that even euglycemic levels of serum glucose (for example, <7 mmol/L) may be associated with increased early mortality in AMI patients with type 2 diabetes (28,29). However, in the current study, for the group with serum-glucose levels between 3.9 and 7.72 mmol/L (70–139 mg/dL) at admission, the 30-day mortality rate after an AMI event was comparable for the nondiabetic patients and the patients with type 2 diabetes. In contrast to the significant association between admission serum-glucose level

and early mortality, no such association between HbA_{1c} and mortality was observed in a large cohort of AMI patients with diabetes (30). Our results also showed that HbA_{1c} alone was not associated with 30-day mortality in AMI patients with type 2 diabetes.

It is well known that admission hyperglycemia is associated with increased mortality in patients with AMI (17,19,26,31,32). Although some studies have suggested that hyperglycemia is associated with greater short- or long-term mortality in AMI patients without diabetes than in AMI patients with type 2 diabetes (2,31), others have reported that the risk was similar between the patient groups (33,34). In the current study, hyperglycemia (serum glucose ≥ 14.44 mmol/L or ≥ 260 mg/dL) was associated with an increased risk of 30-day mortality in both the nondiabetic and type 2 diabetic groups, with a greater increase in 30-day mortality in the nondiabetic AMI patients. The reason for this higher mortality rate in nondiabetic AMI patients with admission hyperglycemia, compared with their diabetic counterparts, is not clear, but such a trend has been previously reported (28,29). A greater degree of stress might be required for a nondiabetic patient to achieve the same hyperglycemic state as a diabetic counterpart (35). In line with this speculation, our results showed that the nondiabetic patients in glucose group 5 more frequently had a Killip class >II compared with the patients in other glucose groups.

Furthermore, the unadjusted 30-day mortality was higher in patients without diabetes than in patients with type 2 diabetes in the current study. However, after adjusting for multiple factors, the 30-day mortality was higher in patients with type 2 diabetes compared with nondiabetic patients. Although diabetes has been shown to predict long-term mortality after AMI in many previous studies, some studies, including KAMIR (36) and a similar Japanese registry study (37), have suggested that diabetes did not increase short-term mortality (28,32) because of recent progress in treatment, especially the development of PCI.

The most important finding in the current study, we believe, is that hypoglycemia in AMI patients with poorly

controlled type 2 diabetes was associated with the highest 30-day mortality among the subgroups, which also included hypoglycemic patients with well-controlled diabetes, hyperglycemic patients with well-controlled diabetes, and hyperglycemic patients with poorly controlled diabetes. An explanation for this finding has remained elusive. However, this finding suggests that the avoidance of hypoglycemia in poorly controlled high-risk patients is extremely important.

Several pathways might mediate the adverse effects of hypoglycemia on outcomes in AMI patients, including sympathetic activation, hypokalemia, QT prolongation, platelet activation and prothrombotic activity, increased inflammation and cytokine levels, endothelial dysfunction, and oxidative stress (7,10,11). In particular, hyperglycemia after hypoglycemia was shown to cause more severe pathophysiologic changes than those observed during recovery to euglycemia, for a so-called “reperfusion-like effect” (38,39). These pathologic processes might be more relevant to patients with poorly controlled diabetes if they also have micro- or macrovascular complications (40). Additionally, acute hyperglycemia itself prevents ischemic preconditioning in patients with AMI who are undergoing reperfusion (28). Thus, in theory, ischemia-reperfusion injuries in patients with AMI could be further complicated by glucose-reperfusion after hypoglycemia. This agrees with our finding that hypoglycemia in AMI patients with poorly controlled diabetes was associated with highly unfavorable outcomes.

This study had several limitations. First, there is a possibility that other residual confounding factors were not excluded completely because the registries that were used were AMI but not diabetes oriented. Second, the number of patients who experienced hypoglycemia at admission for AMI was relatively small compared with the number of patients with hyperglycemia, and detailed information regarding diabetes control and hypoglycemia is lacking. Third, the long-term effects of hypoglycemia on mortality were not determined in the current study. It is not known how long the pathophysiologic changes persist following each episode of acute hypoglycemia. Further studies are required to fully understand the

long-term effects of hypoglycemia on the CV system and other organ systems.

In conclusion, hypoglycemia in AMI patients with or without type 2 diabetes is a more important factor related to 30-day mortality than was previously thought. In particular, hypoglycemia in AMI patients with poorly controlled diabetes is associated with increased mortality compared with patients with well-controlled diabetes.

Acknowledgments. The authors thank Seewan Kim (Yale College, Yale University) for valuable assistance in the preparation of the manuscript.

Funding. This work was supported by the Basic Science Research Program through the National Research Foundation of Korea (NRF) funded by the Ministry of Education, Science and Technology (2011-0010128).

Duality of Interest. No potential conflicts of interest relevant to this article were reported.

Author Contributions. S.A.L. and D.H.L. researched and analyzed data and wrote the manuscript. S.J.C. and J.m.L. analyzed data. M.H.J., Y.J.K., C.J.K., M.C.C., H.-S.K., and Y.A. designed and developed the registry program. G.K., H.Y.K., and C.G.C. contributed to the data interpretation and participated in drafting the manuscript. S.K.O. and K.H.Y. enrolled the patients, collected data, and were involved in data interpretation. M.H.J. and D.H.L. are the guarantors of this work and, as such, had full access to all the data in the study and take responsibility for the integrity of the data and the accuracy of the data analysis.

Prior Presentation. This study was presented at the 2014 Keystone Symposia Conference J1: Challenges and Opportunities in Diabetes Research and Treatment, Vancouver, British Columbia, Canada, 12–17 January 2014.

References

- Kosiborod M, Inzucchi SE, Goyal A, et al. Relationship between spontaneous and iatrogenic hypoglycemia and mortality in patients hospitalized with acute myocardial infarction. *JAMA* 2009;301:1556–1564
- Capes SE, Hunt D, Malmberg K, Gerstein HC. Stress hyperglycaemia and increased risk of death after myocardial infarction in patients with and without diabetes: a systematic overview. *Lancet* 2000;355:773–778
- Pinto DS, Skolnick AH, Kirtane AJ, et al.; TIMI Study Group. U-shaped relationship of blood glucose with adverse outcomes among patients with ST-segment elevation myocardial infarction. *J Am Coll Cardiol* 2005;46:178–180
- Mehta SR, Yusuf S, Díaz R, et al.; CREATE-ECLA Trial Group Investigators. Effect of glucose-insulin-potassium infusion on mortality in patients with acute ST-segment elevation myocardial infarction: the CREATE-ECLA randomized controlled trial. *JAMA* 2005;293:437–446
- Cheung NW, Wong VW, McLean M. The Hyperglycemia: Intensive Insulin Infusion in Infarction (HI-5) study: a randomized controlled trial of insulin infusion therapy for myocardial infarction. *Diabetes Care* 2006;29:765–770
- van der Horst IC, Zijlstra F, van 't Hof AW, et al.; Zwolle Infarct Study Group. Glucose-insulin-potassium infusion inpatients treated with primary angioplasty for acute myocardial infarction: the glucose-insulin-potassium study: a randomized trial. *J Am Coll Cardiol* 2003;42:784–791
- Rana OA, Byrne CD, Greaves K. Intensive glucose control and hypoglycaemia: a new cardiovascular risk factor? *Heart* 2014;100:21–27
- Rothenbuhler A, Bibal CP, Le Fur S, Bougneres P. Effects of a controlled hypoglycaemia test on QTc in adolescents with type 1 diabetes. *Diabet Med* 2008;25:1483–1485
- Laitinen T, Lyyra-Laitinen T, Huopio H, et al. Electrocardiographic alterations during hyperinsulinemic hypoglycemia in healthy subjects. *Ann Noninvasive Electrocardiol* 2008;13:97–105
- Beom JW, Kim JM, Chung EJ, et al. Corrected QT Interval Prolongation during Severe Hypoglycemia without Hypokalemia in Patients with Type 2 Diabetes. *Diabetes Metab J* 2013;37:190–195
- Desouza CV, Bolli GB, Fonseca V. Hypoglycemia, diabetes, and cardiovascular events. *Diabetes Care* 2010;33:1389–1394
- Zoungas S, Patel A, Chalmers J, et al.; ADVANCE Collaborative Group. Severe hypoglycemia and risks of vascular events and death. *N Engl J Med* 2010;363:1410–1418
- Fisman EZ, Motro M, Tenenbaum A, et al. Is hypoglycaemia a marker for increased long-term mortality risk in patients with coronary artery disease? An 8-year follow-up. *Eur J Cardiovasc Prev Rehabil* 2004;11:135–143
- Hsu PF, Sung SH, Cheng HM, et al. Association of clinical symptomatic hypoglycemia with cardiovascular events and total mortality in type 2 diabetes: a nationwide population-based study. *Diabetes Care* 2013;36:894–900
- Goto A, Arah OA, Goto M, Terauchi Y, Noda M. Severe hypoglycaemia and cardiovascular disease: systematic review and meta-analysis with bias analysis. *BMJ* 2013;347:f4533
- Svensson AM, McGuire DK, Abrahamsson P, Dellborg M. Association between hyper- and hypoglycaemia and 2 year all-cause mortality risk in diabetic patients with acute coronary events. *Eur Heart J* 2005;26:1255–1261
- Goyal A, Mehta SR, Diaz R, et al. Differential clinical outcomes associated with hypoglycemia and hyperglycemia in acute myocardial infarction. *Circulation* 2009;120:2429–2437
- Mellbin LG, Malmberg K, Waldenström A, Wedel H, Rydén L; DIGAMI 2 investigators. Prognostic implications of hypoglycaemic episodes during hospitalisation for myocardial infarction in patients with type 2 diabetes: a report from the DIGAMI 2 trial. *Heart* 2009;95:721–727
- Hoebels LP, Damman P, Claessen BE, et al. Predictive value of plasma glucose level on admission for short and long term mortality in patients with ST-elevation myocardial infarction treated with primary percutaneous coronary intervention. *Am J Cardiol* 2012;109:53–59
- Ukena C, Dobre D, Mahfoud F, et al. Hypo- and hyperglycemia predict outcome in patients with left ventricular dysfunction after acute myocardial infarction: data from EPHEsus. *J Card Fail* 2012;18:439–445
- Li DB, Hua Q, Guo J, Li HW, Chen H, Zhao SM. Admission glucose level and in-hospital outcomes in diabetic and non-diabetic patients with ST-elevation acute myocardial infarction. *Intern Med* 2011;50:2471–2475
- Kang SH, Suh JW, Yoon CH, et al.; KAMIR/KorMI Registry. Sex differences in management and mortality of patients with ST-elevation myocardial infarction (from the Korean Acute Myocardial Infarction National Registry). *Am J Cardiol* 2012;109:787–793
- Chen KY, Rha SW, Li YJ, et al.; Korea Acute Myocardial Infarction Registry Investigators. Triple versus dual antiplatelet therapy in patients with acute ST-segment elevation myocardial infarction undergoing primary percutaneous coronary intervention. *Circulation* 2009;119:3207–3214
- Antman EM, Anbe DT, Armstrong PW, et al.; American College of Cardiology; American Heart Association Task Force on Practice Guidelines; Canadian Cardiovascular Society. ACC/AHA guidelines for the management of patients with ST-elevation myocardial infarction: a report of the American College of Cardiology/American Heart Association Task Force on Practice Guidelines (Committee to Revise the 1999 Guidelines for the Management of Patients with Acute Myocardial Infarction). *Circulation* 2004;110:e82–e292
- Braunwald E, Antman EM, Beasley JW, et al. ACC/AHA guidelines for the management of patients with unstable angina and non-ST-segment elevation myocardial infarction: executive summary and recommendations. A report of the American College of Cardiology/American Heart Association task force on practice guidelines (committee on the management of patients with unstable angina). *Circulation* 2000;102:1193–1209
- Kosiborod M, Inzucchi SE, Krumholz HM, et al. Glucometrics in patients hospitalized with acute myocardial infarction: defining the optimal outcomes-based measure of risk. *Circulation* 2008;117:1018–1027
- Malmberg K. Prospective randomised study of intensive insulin treatment on long term survival after acute myocardial infarction in patients with diabetes mellitus. DIGAMI (Diabetes Mellitus, Insulin Glucose Infusion in Acute Myocardial Infarction) Study Group. *BMJ* 1997;314:1512–1515
- Ishihara M. Acute hyperglycemia in patients with acute myocardial infarction. *Circ J* 2012;76:563–571
- Ishihara M, Kojima S, Sakamoto T, et al.; Japanese Acute Coronary Syndrome Study (JACSS) Investigators. Comparison of blood glucose values on admission for acute myocardial infarction in patients with versus without diabetes mellitus. *Am J Cardiol* 2009;104:769–774
- Britton KA, Aggarwal V, Chen AY, et al. No association between hemoglobin A1c and in-hospital mortality in patients with diabetes and acute myocardial infarction. *Am Heart J* 2011;161:657–663.e1
- Kosiborod M, Rathore SS, Inzucchi SE, et al. Admission glucose and mortality in elderly patients hospitalized with acute myocardial infarction: implications for patients with and without recognized diabetes. *Circulation* 2005;111:3078–3086
- Ishihara M, Kagawa E, Inoue I, et al. Impact of admission hyperglycemia and diabetes

- mellitus on short- and long-term mortality after acute myocardial infarction in the coronary intervention era. *Am J Cardiol* 2007;99:1674–1679
33. Hadjadj S, Coisne D, Mauco G, et al. Prognostic value of admission plasma glucose and HbA in acute myocardial infarction. *Diabet Med* 2004;21:305–310
34. Stranders I, Diamant M, van Gelder RE, et al. Admission blood glucose level as risk indicator of death after myocardial infarction in patients with and without diabetes mellitus. *Arch Intern Med* 2004;164:982–988
35. Oswald GA, Smith CC, Betteridge DJ, Yudkin JS. Determinants and importance of stress hyperglycaemia in non-diabetic patients with myocardial infarction. *Br Med J (Clin Res Ed)* 1986;293:917–922
36. Park KH, Ahn Y, Jeong MH, et al.; Korean Acute Myocardial Infarction Registry Investigators. Different impact of diabetes mellitus on in-hospital and 1-year mortality in patients with acute myocardial infarction who underwent successful percutaneous coronary intervention: results from the Korean Acute Myocardial Infarction Registry. *Korean J Intern Med* 2012;27:180–188
37. Ogawa H, Kojima S. Modern state of acute myocardial infarction in the interventional era: observational case-control study—Japanese acute coronary syndrome study (JACSS). *J Cardiol* 2009;54:1–9
38. Ceriello A, Novials A, Ortega E, et al. Evidence that hyperglycemia after recovery from hypoglycemia worsens endothelial function and increases oxidative stress and inflammation in healthy control subjects and subjects with type 1 diabetes. *Diabetes* 2012;61:2993–2997
39. Suh SW, Gum ET, Hamby AM, Chan PH, Swanson RA. Hypoglycemic neuronal death is triggered by glucose reperfusion and activation of neuronal NADPH oxidase. *J Clin Invest* 2007;117:910–918
40. Wright RJ, Frier BM. Vascular disease and diabetes: is hypoglycaemia an aggravating factor? *Diabetes Metab Res Rev* 2008;24:353–363