

Concurrent Alterations in EGFR-Mutant Lung Cancers Associated with Resistance to EGFR Kinase Inhibitors and Characterization of MTOR as a Mediator of Resistance



Helena A. Yu^{1,2}, Ken Suzawa³, Emmet Jordan¹, Ahmet Zehir³, Ai Ni⁴, Ryan Kim³, Mark G. Kris^{1,2}, Matthew D. Hellmann^{1,2}, Bob T. Li^{1,2}, Romel Somwar⁵, David B. Solit^{1,2,6}, Michael F. Berger^{3,6}, Maria Arcila³, Gregory J. Riely^{1,2}, and Marc Ladanyi^{3,6}

Abstract

Purpose: To identify molecular factors that determine duration of response to EGFR tyrosine kinase inhibitors and to identify novel mechanisms of drug resistance, we molecularly profiled EGFR-mutant tumors prior to treatment and after progression on EGFR TKI using targeted next-generation sequencing.

Experimental Design: Targeted next-generation sequencing was performed on 374 consecutive patients with metastatic EGFR-mutant lung cancer. Clinical data were collected and correlated with somatic mutation data. Erlotinib resistance due to acquired MTOR mutation was functionally evaluated by *in vivo* and *in vitro* studies.

Results: In 200 EGFR-mutant pretreatment samples, the most frequent concurrent alterations were mutations in *TP53*, *PIK3CA*, *CTNNB1*, and *RB1* and focal amplifications in *EGFR*, *TTF1*, *MDM2*, *CDK4*, and *FOXA1*. Shorter time to progression on EGFR TKI was associated with amplification of *ERBB2*

(HR = 2.4, *P* = 0.015) or *MET* (HR = 3.7, *P* = 0.019), or mutation in *TP53* (HR = 1.7, *P* = 0.006). In the 136 post-treatment samples, we identified known mechanisms of acquired resistance: EGFR T790M (51%), *MET* (7%), and *ERBB2* amplifications (5%). In the 38 paired samples, novel acquired alterations representing putative resistance mechanisms included *BRAF* fusion, *FGFR3* fusion, *YES1* amplification, *KEAP1* loss, and an MTOR E2419K mutation. Functional studies confirmed the contribution of the latter to reduced sensitivity to EGFR TKI *in vitro* and *in vivo*.

Conclusions: EGFR-mutant lung cancers harbor a spectrum of concurrent alterations that have prognostic and predictive significance. By utilizing paired samples, we identified several novel acquired alterations that may be relevant in mediating resistance, including an activating mutation in MTOR further validated functionally. *Clin Cancer Res*; 24(13); 3108–18. ©2018 AACR.

Introduction

EGFR-mutant lung cancers represent a distinct molecular subset of lung cancers, with the majority of such patients benefitting from treatment with EGFR tyrosine kinase inhibitor (TKI) therapy

(1, 2). Although the majority of patients respond to EGFR TKI, there is a significant heterogeneity in the clinical course of patients with EGFR-mutant lung cancers. This variability may be partially attributable to differences among EGFR mutation subtypes with exon 19 deletions associated with longer overall survival compared with the L858R missense substitution. In contrast, tumors with EGFR exon 20 insertions are typically intrinsically resistant to EGFR inhibitor therapy, with rare exceptions (3, 4) and lung cancers with certain EGFR mutations such as exon 18 alterations may be more sensitive to a particular EGFR TKI, such as afatinib, over others (5). Among patients with the common sensitizing EGFR exon 19 deletions and EGFR L858R, there are no established molecular features that predict duration of benefit from EGFR TKI.

As comprehensive tumor genomic profiling becomes standard of care, clinicians are often informed in real time about concurrent genetic alterations that co-occur with clinically actionable driver oncogenes and which may affect prognosis and response to treatment.

For example, within KRAS-mutant lung cancers, concurrent *LKB1* (*STK11*) and *TP53* mutations may be associated with shorter survival (6–9) and the presence of the former may also confer a greater sensitivity to *mTOR* or *MEK* inhibition (10, 11). Similarly, in EGFR-mutant lung cancers, several reports have suggested that concurrent *TP53* alterations are associated with a lower likelihood of response to EGFR TKI and shorter overall survival (12, 13).

¹Division of Solid Tumor Oncology, Department of Medicine, Memorial Sloan Kettering Cancer Center, New York, New York. ²Weill Cornell Medical College, New York, New York. ³Department of Pathology, Memorial Sloan Kettering Cancer Center, New York, New York. ⁴Department of Epidemiology and Biostatistics, Memorial Sloan Kettering Cancer Center, New York, New York. ⁵Human Oncology and Pathogenesis Program, Memorial Sloan Kettering Cancer Center, New York, New York. ⁶Center for Molecular Oncology, Memorial Sloan Kettering Cancer Center, New York, New York.

Note: Supplementary data for this article are available at Clinical Cancer Research Online (<http://clincancerres.aacrjournals.org/>).

H.A. Yu and K. Suzawa contributed equally to this article.

Prior presentation: The results were presented in part at the Annual Meeting of the American Society of Clinical Oncology, Chicago, IL, June 3–7, 2016.

Corresponding Author: Helena A. Yu, Memorial Sloan Kettering Cancer Center, 300 East 66th Street, New York, NY 10065. Phone: 686-888-4274; Fax: 646-888-4623; E-mail: yuh@mskcc.org

doi: 10.1158/1078-0432.CCR-17-2961

©2018 American Association for Cancer Research.

Translational Relevance

There is heterogeneity in the clinical course of patients with *EGFR*-mutant lung cancers that may be attributable to concurrent molecular alterations. Concurrent *HER2* amplification, *MET* amplification, and *TP53* mutations in pretreatment tumor samples were all associated with shorter time to progression on EGFR TKI and concurrent *TP53* mutations were also associated with shorter overall survival. Identification of these concurrent mutations may help us tailor the treatment of these patients by utilizing new strategies upfront to overcome primary resistance. In addition, several acquired mutations were identified at the time of clinical progression that may mediate resistance to EGFR TKIs including a *BRAF* fusion, *FGFR3* fusion, *YES1* amplification, *KEAP1* loss, and an *MTOR E2419K* mutation that represent potential new therapeutic targets. Comprehensive genomic profiling allows us to understand clinical heterogeneity within *EGFR*-mutant lung cancers and may allow us to personalize targeted therapy for individual patients.

Because expression of BIM is required for induction of apoptosis by EGFR TKIs, low levels of pretreatment BIM within the tumor are associated with a lower response rate and shorter progression-free survival on EGFR TKI (14–17). EGFR T790M, which is most commonly seen as an acquired mutation, can sometimes occur pretreatment, and when present, baseline EGFR T790M mutations result in a lower response rate, shorter progression-free survival on EGFR TKI and shorter overall survival in patients with metastatic EGFR-mutant lung cancers (18–20)

Immunotherapy has emerged as an invaluable treatment option for many patients with lung cancer. Significant effort has gone into identifying predictive biomarkers that could be used to prospectively select patients that are most likely to benefit from immunomodulation, with PD-L1 expression and tumor mutation burden (TMB) having emerged as potential biomarkers of immunotherapy response (21, 22). *EGFR*-mutant lung cancers have a relatively lower TMB and less frequently express PDL1, features that may underlie the lack of response to immunotherapy largely seen in patients with *EGFR*-mutant lung cancers (23). As responses to immunotherapy are limited in this population, defining the ideal sequence of treatment options remains critical.

Acquisition of EGFR T790M is the most frequently identified resistance mechanism to first- and second-generation EGFR TKI therapy. Less frequently identified but well established acquired alterations include *MET* and *ERBB2* amplification, *PIK3CA* and *BRAF* mutations, and small-cell histologic transformation (24, 25). In approximately 30% of patients, the molecular basis of clinical progression is not defined, which may be attributable to the limited scope of the molecular profiling assays historically employed. Comprehensive next-generation sequencing performed on tumor samples before and after treatment provides an opportunity to discover relevant molecular alterations not previously appreciated that may suggest candidates for combination therapy to improve responses to EGFR TKI. To understand the impact of co-mutations and to identify novel acquired alterations that emerge on treatment, we integrated genomic data, treatment

histories and clinical outcomes in patients with *EGFR*-mutant lung cancers who underwent clinical next-generation sequencing (NGS) analysis before and/or after treatment with EGFR TKI, and report functional studies of one of the novel candidate resistance mechanisms thereby identified.

Materials and Methods

We identified all patients with *EGFR*-mutant metastatic lung cancers who had targeted hybrid capture, NGS performed at Memorial Sloan Kettering from March 2014 to February 2017. Genomic analysis was performed using the MSK-IMPACT assay, a clinical test designed to detect mutations, copy-number alterations, and select fusions involving 341 (version 1), 410 (version 2), or 468 (version 3) cancer-associated genes (26, 27). All genetic alterations discussed within the manuscript involved genes present in all three versions of MSK-IMPACT. Paired analysis of tumor and matched-normal samples was performed to allow for definitive identification of somatic mutations. Cancer cell fractions were calculated as per previously published methods (28). Patients were divided into three mutually exclusive cohorts: patients with tumor samples collected prior to EGFR TKI therapy, patients with tumor sampled collected after disease progression, and patients for whom paired samples (pre-EGFR TKI and post-EGFR TKI) were available within the prespecified time frame. Data collection was approved by the MSK Institutional Review Board/Privacy Board.

We collected clinical characteristics and detailed treatment histories for all patients including sites of disease, time to progression on EGFR TKI and overall survival (OS) from start of EGFR TKI. Time to progression on EGFR TKI was defined as time from start of EGFR TKI to time of radiographic RECIST progression. Fisher exact and log-rank tests were utilized to identify potential associations between *EGFR* mutation subtype, frequent co-mutations, clinical factors, and patient outcomes. Time to progression and overall survival were estimated using Kaplan-Meier methodology. Patients were followed until death; patients alive were censored at the time of last available follow up. Please see supplementary material for detailed methods regarding the *in vivo* and *in vitro* studies.

Results

Patient and tumor characteristics

From March 2014 to February 2017, 374 patients with activating kinase-domain mutations in *EGFR* underwent clinical tumor genomic profiling. Two hundred patients had tumor for molecular analysis collected prior to initiation of EGFR TKI; 136 patients had tumor molecular profiling from a sample obtained after disease progression on EGFR TKI and 38 patients had tumors samples from both before and after treatment with an EGFR TKI (Table 1). Three posttreatment specimens (3/136, 2%) had neuroendocrine differentiation, two as small-cell carcinoma and one as large cell neuroendocrine carcinoma. No component of small-cell histology was seen in any of the pretreatment specimens.

Concurrent genomic alterations and outcomes in patients whose tumors were profiled before treatment with EGFR TKI

The most frequent concurrent mutations and amplifications in samples obtained prior to EGFR TKI treatment are presented in Figure 1. The median number of co-mutations was 5 (range

Table 1. Characteristics of patients who had MSK-IMPACT testing prior to EGFR TKI therapy ($n = 200$) or after EGFR TKI therapy ($n = 136$) or both ($n = 38$)

Clinical characteristics	Pre EGFR-TKI, N (%)	Post EGFR-TKI, N (%)	Paired samples, N (%)	
			Before TKI	After TKI
Total	200	136	38	
Age				
Median (range)	63 (23-89)	61 (29-86)	62 (34-84)	
Sex				
Male	66 (33)	95 (70)	11 (29)	
Female	134 (67)	41 (30)	27 (71)	
Smoking				
Never-smoker	118 (59)	79 (58)	22 (58)	
Former smoker	82 (41)	57 (42)	16 (42)	
Median pack-year (range)	6 (1-125)	0 (0-110)	0 (0-30)	
Histology				
Adenocarcinoma	200 (100)	133 (97.8)	38 (100)*	37 (97)
Small-cell carcinoma	0 (0)	2 (1.5)	0 (0)	1 (3)
Large cell neuroendocrine	0 (0)	1 (0.7)	0 (0)	0 (0)
EGFR mutation				
EGFR T790M	0 (0)	70 (52)	0 (0)	16 (42)
Exon 19 deletion	90 (45)	78 (57)	17 (45)	
L858R	72 (36)	43 (32)	15 (39)	
Exon 20 insertions	7 (3.5)	1 (0.7)	0 (0)	
Exon 18 deletion	5 (2.5)	4 (3)	3 (8)	
Exon 19 insertion	3 (1.5)	1 (0.7)	1 (3)	
L861Q	6 (3)	2 (1.5)	0 (0)	
G719A	3 (1.5)	2 (1.5)	0 (0)	
L747P	3 (1.5)	0 (0)	0 (0)	
E709X+G719X	4 (2)	0 (0)	0 (0)	
G719X+S768I	2 (1)	3 (2)	0 (0)	
G719X+L861Q	3 (1.5)	0 (0)	0 (0)	
EGFR-KDD	2 (1)	2 (1.5)	2 (5)	
Prior treatment				
Erlotinib	0 (0)	128 (94)	0 (0)	36 (95)
Afatinib	0 (0)	6 (4)	0 (0)	2 (5)
Dacomitinib	0 (0)	2 (1)	0 (0)	0 (0)

0–19). The most frequent co-occurring mutations in the baseline samples were *TP53* (60%, $n = 119$), *PIK3CA* (12%, $n = 23$), *CTNNB1* (9%, $n = 18$), and *RB1* (10%, $n = 19$). The most frequent concurrent amplifications were *EGFR* (22%, $n = 45$), *NKX2.1/TTF-1* (15%, $n = 29$), *MDM2* (12%, $n = 23$), *CDK4* (10%, $n = 21$), and *FOXA1* (10%, $n = 20$). *ERBB2* amplification was seen in 4% ($n = 8$) and *MET* amplification in 2% ($n = 4$) of baseline samples. No patients had evidence of *EGFR* T790M prior to treatment with *EGFR* TKI. There were no concurrent *ALK*, *ROS1*, *RET*, *BRAF*, or *MET* mutations in any of the pretreatment samples. There was one sample with an *EGFR* L858R mutation and concurrent subclonal *KRAS* Q61H and *KRAS* Q22K mutations, described in more detail in a previous report (29). The number of co-mutations did not correlate with specific *EGFR* mutation subtype, age, sex, or smoking status.

In the cohort of patients with pretreatment tumor samples used for molecular profiling, the median time to progression (TTP) on *EGFR* TKI was 11 months (95% CI, 9–13 months). The presence of *ERBB2* amplification (median TTP 8 months, 95% CI 5-NR months; HR = 2.42, $P = 0.018$), *MET* amplification (median TTP 5 months, 95% CI 7–12 months; HR = 3.65, $P = 0.029$), and *TP53* mutation (median TTP 6 months, range 1–33; HR = 1.68, $P = 0.006$) in pretreatment samples were all associated with shorter time on *EGFR* TKI (Fig. 2). The presence of *TP53* alterations was associated with shorter overall survival from start of *EGFR* TKI (NR months vs. 47 months, HR = 2.04, $P = 0.036$; Fig. 2). No other co-mutations had a significant association with overall survival.

Concurrent genomic alterations in patients whose tumors were profiled after disease progression on *EGFR* TKI

The most frequent concurrent mutations and amplifications in the 136 samples obtained after *EGFR* TKI treatment are presented in Figure 1. *EGFR* T790M was identified in 52% (70/136). The most frequent co-mutations were *TP53* (65%, $n = 89$), *PIK3CA* (13%, $n = 17$), and *RB1* (8%, $n = 11$), and the most frequent amplifications were *EGFR* (35%, $n = 47$), *TERT* (11%, $n = 15$), and *NKX2.1/TTF-1* (11%, $n = 15$). *ERBB2* amplifications were seen in 4% ($n = 7$) and *MET* amplification in 7% ($n = 9$). One *BRAF* D594V mutation (0.7%) and two *BRAF* fusions were identified (2.2%). There were no concurrent *ALK*, *ROS1*, *RET*, *KRAS*, or *MET* alterations in any of the samples.

When comparing the pretreatment and posttreatment samples, several somatic alterations were more frequently seen in the posttreatment samples (Fig. 3A). *EGFR* T790M (52% vs. 0%), *BRAF* alterations (5.1% vs. 1%; OR = 5.3, $P = 0.034$), *CDKN2A* loss (21.3% vs. 12.5%; OR = 1.9, HR = 0.035), *CDKN2B* loss (19.9% vs. 10.5%; OR = 2.1, $P = 0.018$), *EGFR* amplification (35% vs. 23%; OR = 1.82, $P = 0.018$), *FGFR3* alterations (3.7% vs. 0.5%; OR = 7.55, $P = 0.042$) and *MET* amplification (6.6% vs. 2%; OR = 3.46, $P = 0.042$) were all more frequently seen in the posttreatment samples compared with the pretreatment samples. The analyses performed suggest that posttreatment samples are enriched for these alterations, but we cannot confirm which alterations were acquired because these pre- and posttreatment samples were not paired samples.

Analysis of paired pretreatment and acquired resistance specimens

To identify candidate novel mechanisms of acquired resistance to *EGFR* TKI and to clarify which mutations identified in the broader analysis of resistance specimens are more likely to be acquired during therapy, we analyzed paired pre and post-*EGFR* TKI treatment samples from an additional 38 patients. All had adenocarcinoma histology prior to treatment; one patient had small-cell histology upon rebiopsy after progression on erlotinib (2.6%, 1/38). The paired pretreatment and posttreatment samples maintained the same sensitizing *EGFR* mutation in all cases. Comprehensive information regarding co-mutations present at baseline, at acquired resistance, and site of biopsy is provided in Supplementary Tables S1 and S2. Forty-two percent (16/38) had an acquired *EGFR* T790M mutation identified in the posttreatment sample. In these 16 patients who acquired *EGFR* T790M, we visually examined sequencing reads to see if low level pretreatment *EGFR* T790M was present in the baseline sample but below the bioinformatics cutoff for calling an alteration, but no evidence of *EGFR* T790M was present in any of the baseline paired samples, indicating that small preexisting *EGFR* T790M-positive clones, if present, must occur well below the limit of detection of our assay (1%–2%). Acquired *MET* amplification was identified in 8% (3/38), acquired *ERBB2* amplification in 5% (2/38), and acquired amplification of the *EGFR* allele with the sensitizing mutation in 16% (6/38). Notable acquired alterations that represent the presumed mechanisms of resistance to *EGFR* TKI for each sample are noted in Figure 4.

The presence of multiple concurrent alterations that could mediate resistance was common in these rebiopsy specimens, with *EGFR* T790M frequently arising concurrently with other ostensible mechanisms of resistance. For example, *EGFR*

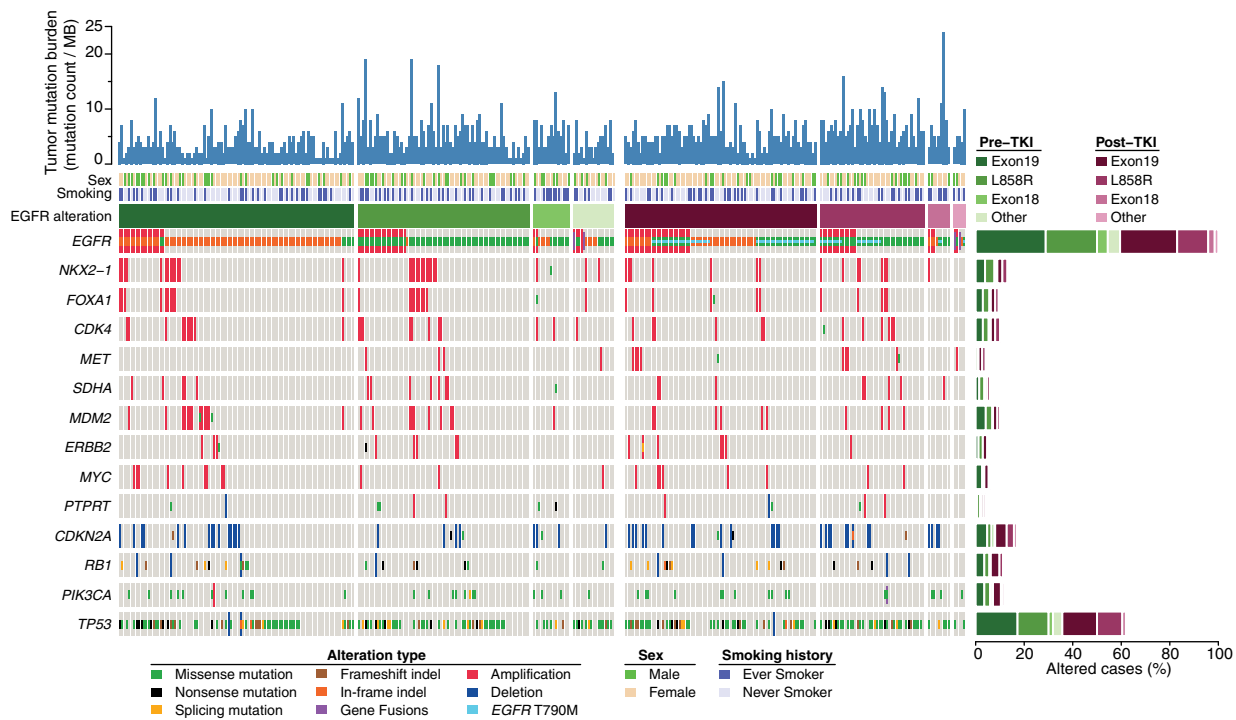


Figure 1. Oncoprint of alterations identified in tumor samples from patients with EGFR-mutant lung cancer pretreatment (green) and after treatment (pink) with an EGFR TKI. The frequency is noted on the right. The type of genetic alteration (missense, inframe, truncated, amplification, deletion, fusion) is described in the legend, and the computations present in $\geq 5\%$ of cases were included in the figure. HER2 and MET amplification were included due to their relevance in acquired resistance.

T790M was detected in two patients with EGFR amplification and in one patient with an acquired ERBB2 amplification. However, acquired EGFR T790M mutations did not occur in any patient with acquired MET amplification. In one patient's posttreatment sample, EGFR T790M, an acquired PIK3CA mutation and small-cell transformation were all identified; RB1 and TP53 loss were present in both the pretreatment and posttreatment samples. Acquired PIK3CA E545K mutations were seen in three patients; however, in all instances, the acquired PIK3CA mutation was seen concurrently with other known mechanisms of resistance.

We also inferred the fraction of cancer cells that contained specific mutations where sufficient tumor content was available. Two representative cases are illustrated in Figure 3B and C. As expected, the EGFR sensitizing mutations were present in a very high fraction of cells in each case. Acquired mutations associated with drug resistance, in contrast, often appear to be subclonal and present in a lower fraction of cancer cells. EGFR T790M mutations when identified in a tumor, were present in an average 34% of cells (median = 26%, range = 5.7%–84%). Interestingly, RB1 and TP53 mutations appear to be truncal mutations present in an essentially clonal fashion both pretreatment and after-treatment with EGFR TKI.

TP53 mutations were present in average 87% of cells (median = 93%, range 6%–100%) and RB1 mutations were present in average 95% of cells (median = 94%, range 93%–100%).

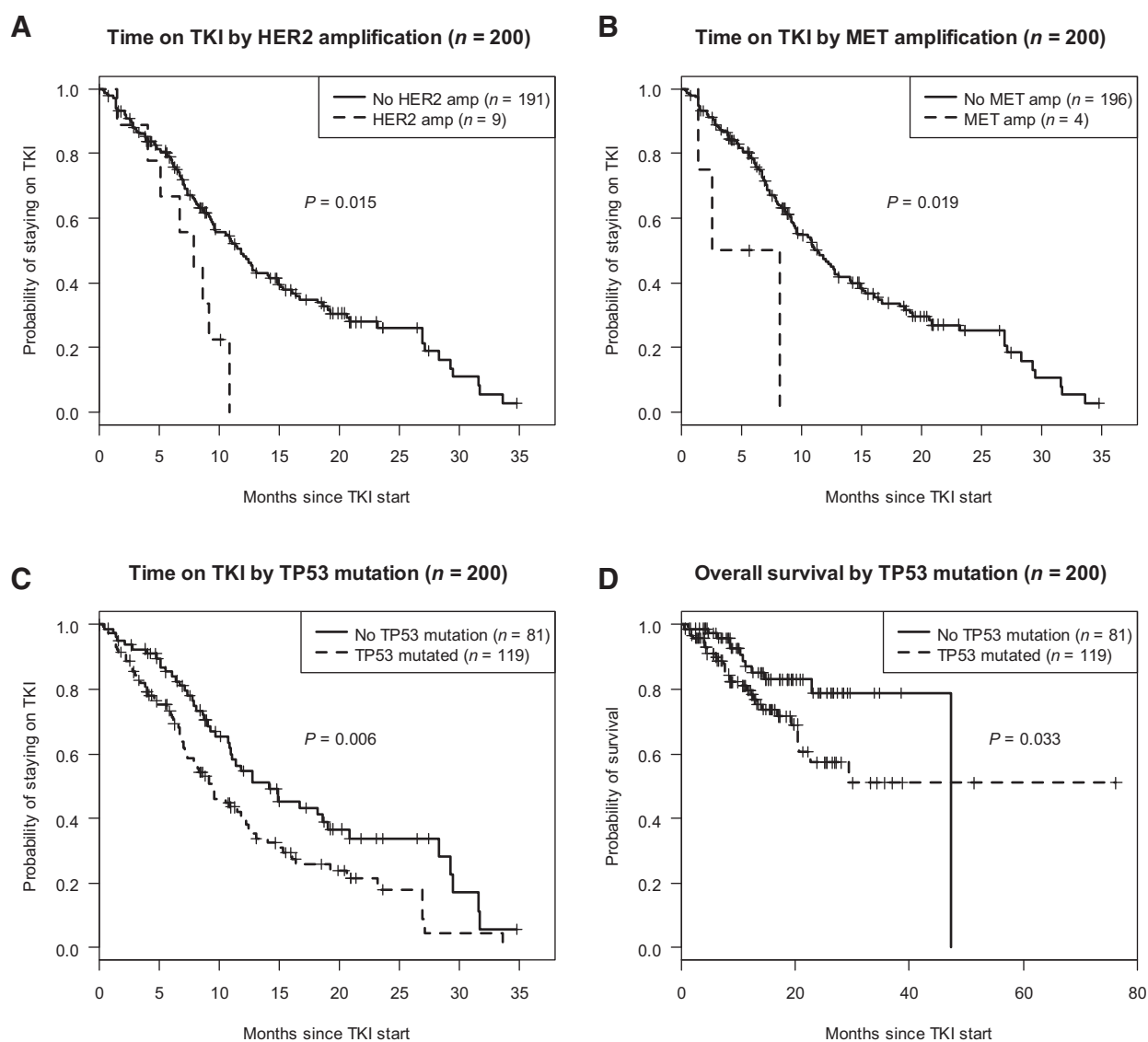
Upon review of the paired samples, several novel acquired alterations were identified as plausible candidate mediators of clinical resistance to EGFR TKIs as these alterations have func-

tional significance preclinically or in other clinical settings (Fig. 3). One patient had an acquired AGK-BRAF fusion as well as a known pathogenic TP53 mutation, G334W. Two others had acquired loss of function TP53 alterations, one in combination with a not previously reported ARID1A mutation, E1032K. Another patient had evidence of an acquired FGFR3-TACC3 fusion in their resistance sample along with an acquired PIK3CA E545K mutation. One patient had loss of KEAP1 in their resistance sample and no other acquired alterations associated with EGFR TKI resistance. One patient acquired YES1 amplification in their posttreatment sample along with an acquired IDH1 R132G mutation. One patient had an acquired mTOR mutation, E2419, in their post-treatment sample. We have further characterized two of these novel candidate EGFR TKI resistance mechanisms: functional data on the effect of MTOR E2419K on response to EGFR TKI are provided below and validation of YES1 amplification as a TKI resistance mechanism is described separately (Fan PD and colleagues, submitted).

Tumor mutation burden

We also examined difference in TMB (number of nonsynonymous variants, normalized per megabase covered to account for MSK-IMPACT panel versions of varying size) for all tumor samples. TMB was slightly but significantly higher in the post-EGFR TKI samples ($n = 136$) when compared with the pretreatment samples ($n = 200$), 4.7 vs 3.8 mutations/MB, $P < 0.0001$ (Fig. 5A). In the 38 paired samples, the tumor mutation burden was also higher in the tumor samples after treatment with EGFR TKI, $P = 0.0015$ (Fig. 5B).

Downloaded from http://aacrjournals.org/clinccancerres/article-pdf/24/13/3111/1082044889/3108.pdf by guest on 21 February 2024

**Figure 2.**

Progression-free survival on EGFR TKI and overall survival from start of EGFR TKI stratified by concurrent alteration present in pretreatment tumor sample in patients with *EGFR*-mutant lung cancers. **A**, Time on EGFR TKI stratified by presence/absence of HER2 amplification. **B**, Time on EGFR TKI stratified by presence/absence of MET amplification. **C**, Time on EGFR TKI stratified by presence/absence of p53 mutation. **D**, Overall survival stratified by presence/absence of p53 mutation.

Functional analysis of mTOR E2419K mutation as a novel resistance mechanism to EGFR TKI

Tumor samples from one patient with paired pretreatment and posttreatment samples demonstrated an acquired E2419K mutation in exon 53 of *mTOR* in 5.6% (39/693) reads, with *EGFR* L858R identified in 17% (112/645) reads, suggesting that approximately a third of the tumor cells in the posttreatment biopsy harbored this *MTOR* mutation, in the absence of other known resistance mechanisms (Fig. 6A). We performed functional studies of this mutation and other common activating *mTOR* mutations (C1483F and S2215F; refs. 30, 31). Cells transiently expressing *mTOR* E2419K showed stronger phosphorylation of S6K, S6, and 4E-BP, which are downstream signaling pathways of mTORC1, but with little effect on phosphorylation of AKT, which

is downstream from mTORC2 (Fig. 6B; Supplementary Fig. S1) suggesting that these *mTOR* mutations exclusively activate mTORC1, consistent with previous data (30). Cells harboring the *mTOR* E2419K mutations displayed inhibition of downstream signaling upon treatment with mTOR inhibitors (everolimus, AZD8055, BEZ235), but not with EGFR inhibitors (erlotinib; Fig. 6C).

To investigate the role of *mTOR* mutations in mediating EGFR TKI resistance, we generated an isogenic cell line model using PC9 cells transduced with retroviral vectors driving expression of either *mTOR* WT or mutant. Phosphorylation of EGFR, AKT, and ERK was inhibited to a similar extent by increasing concentrations of erlotinib in both *mTOR* WT or mutant cells, but phosphorylation of S6 was largely insensitive to erlotinib in *mTOR*-mutant cells

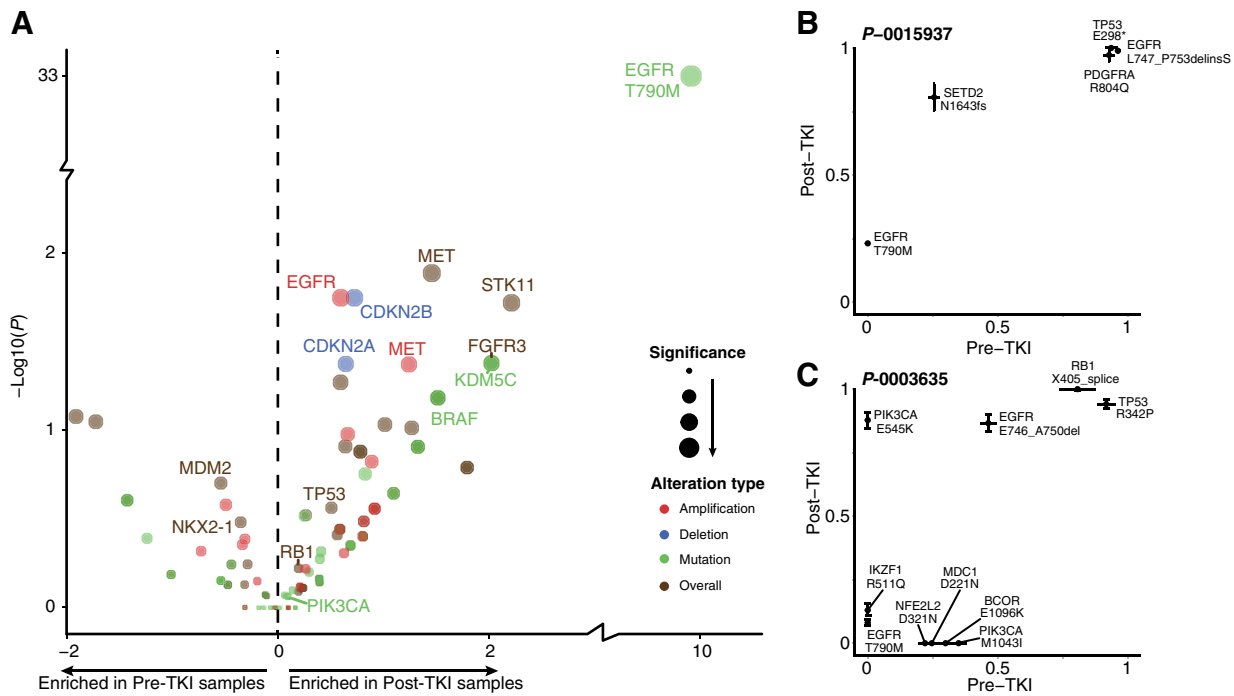
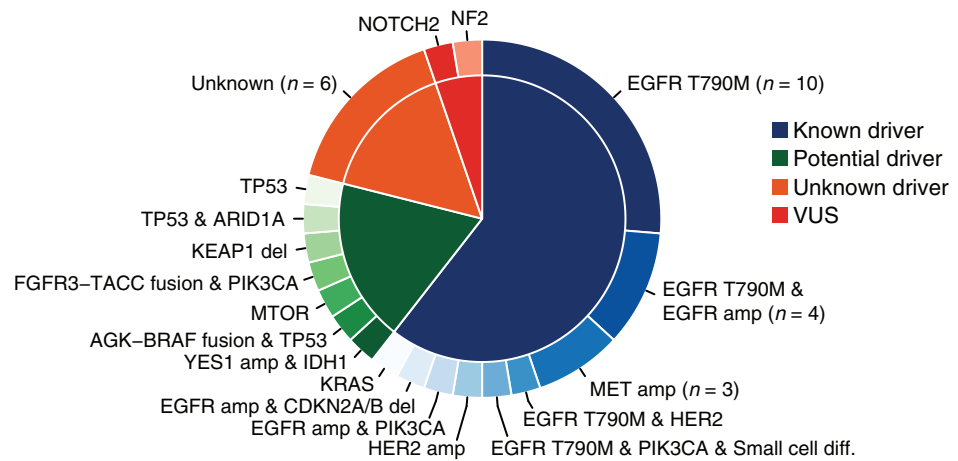


Figure 3. **A**, Enrichment of genomic alterations in tumors from patients with EGFR-mutant lung cancers prior to EGFR TKI versus after progression on EGFR TKI. The level of enrichment is represented as different in frequency between the two states (X axis) and its significance (P value, Y axis). The type of alterations is represented by color. **B** and **C**, Cancer cell fractions of mutations based on FACETS analysis comparing pretreatment (x-axis) and posttreatment tumor samples (y-axis) in two representative patients.

(Fig. 6D). To determine the sensitivity to erlotinib treatment *in vitro*, cell viability (measured by AlamarBlue assay), survival and proliferation (measured by clonogenic assay), and caspase-3/7 activity (measured by luminescent assay) were examined. Cells expressing *mTOR* E2419K formed larger and more numerous colonies and showed less caspase 3/7 activity (Fig. 6E and F), whereas no differences were observed in cell viability (Supplementary Fig. S2), suggesting that the *mTOR* E2419K mutation enhances clonogenicity and survival of *EGFR*-mutant lung cancer cells in the presence of erlotinib rather than proliferation, cellular effects consistent with activation of the PI3K/AKT/MTOR signaling pathway rather than the MAPK pathway.

Next, we generated xenograft models of the isogenic PC9-*mTOR*-mutant cell lines to assess response to erlotinib treatment *in vivo*. PC9-*mTOR* E2419K xenografts exhibited faster growth than PC9-*mTOR* WT xenografts and tumor growth of PC9-*mTOR* WT xenografts was almost completely inhibited with erlotinib, whereas *mTOR* E2419K-mutant xenografts continued to grow despite erlotinib exposure, suggesting that *mTOR* E2419K mediates resistance to erlotinib *in vivo* (Fig. 6G). We then assessed whether acquired resistance to erlotinib mediated by *mTOR* activation could be targeted with combination *mTOR* and EGFR inhibition. In PC9-*mTOR* E2419K cells, neither treatment with erlotinib or AZD8055 alone fully abrogated EGFR downstream

Figure 4. Mechanisms of resistance in the paired samples. These mutations are acquired alterations when comparing pretreatment samples to samples obtained after clinical progression on an EGFR TKI.



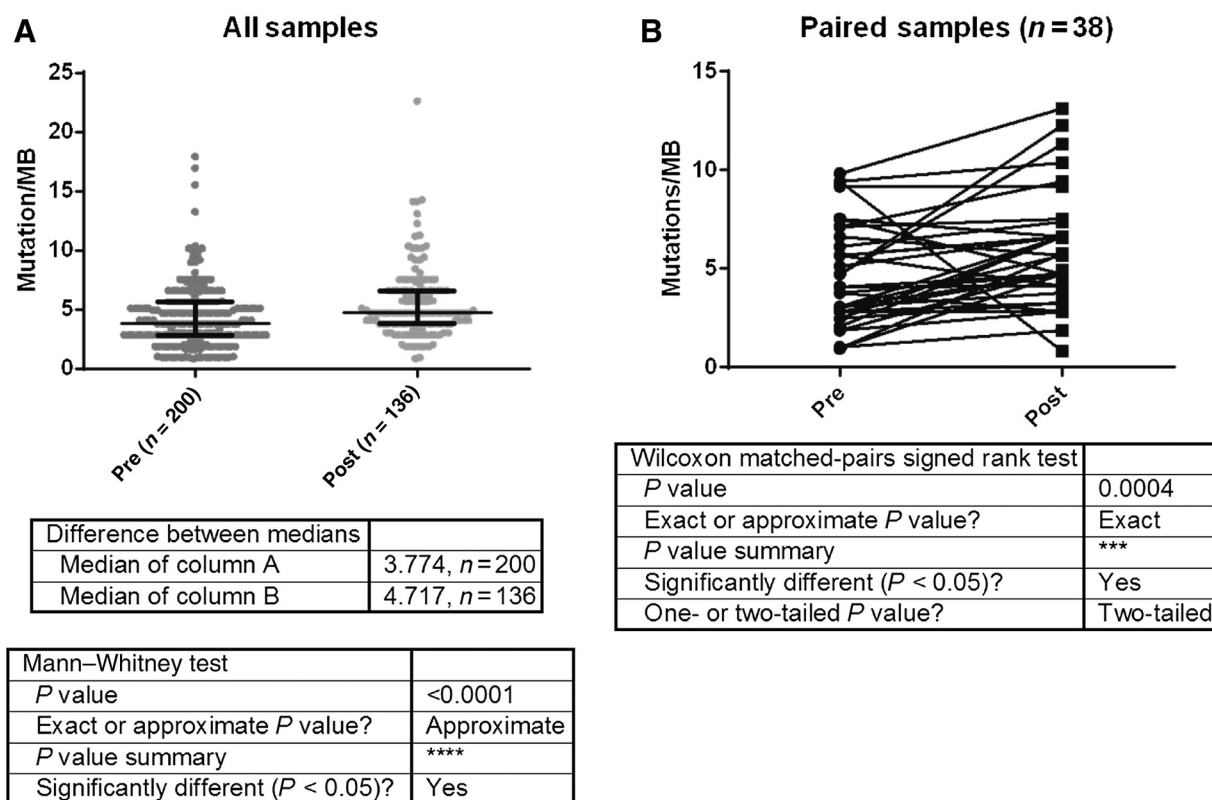


Figure 5. **A**, TMB normalized per MB in pre-TKI cohort compared with post-TKI cohort. **B**, Number of concurrent mutations in pre-TKI sample and paired post-TKI sample for 38 patients with paired samples.

signaling, but combination treatment with both drugs fully inhibited downstream EGFR signaling (Fig. 6H). The IC₅₀ of PC9-*mTOR* lines for AZD8055 ranged from 26.9 to 69.7 nmol/L, and those of PC9 cells with *mTOR* activating mutations were slightly higher compared with empty vector control or *mTOR* WT (Supplementary Fig. S3). These differences might reflect increases in *mTOR* catalytic activity associated with activating mutations. *In vivo*, mice bearing PC9-*mTOR* E2419K xenografts were treated with either erlotinib alone (25 mg/kg), AZD8055 alone (20 mg/kg), or combination treatment. *mTOR* E2419K xenografts had some growth retardation with single agent erlotinib or AZD8055, but only combination treatment induced tumor shrinkage (Fig. 6I) without a significant reduction in mouse weight (Supplementary Fig. S4). Taken together, these findings suggest that the acquired *mTOR* E2419K mutation confers resistance to erlotinib in *EGFR*-mutant NSCLC, and that combination therapy with *EGFR* and *mTOR* inhibitors may reverse such resistance.

Discussion

In this analysis, we have characterized the landscape of concurrent genetic alterations in a series of patients with *EGFR*-mutant lung cancers. We identify preexistent *ERBB2* and *MET* amplification as well as *TP53* alterations as determinants of shorter time on *EGFR* TKI. Through analysis of tumors collected after disease progression on *EGFR* TKI, including 38 paired samples, we identified a number of molecular alterations as

potential mechanisms of acquired resistance. These data support the exploration of combinatorial approaches that can overcome established drug resistance or delay the emergence of drug resistant clones. Because our analyses were exploratory, we opted not to adjust for multiple testing, and our results require validation in future studies.

We found that coexisting *TP53* mutations was by far the most common comutation in *EGFR*-mutant lung cancers and associated with a markedly shorter time to progression on initial *EGFR* TKI as well as shorter overall survival. This frequency of *TP53* mutations was somewhat higher than reported in lung adenocarcinomas in prior studies (ranging from 24–55%; refs. 32–35), but the predictive and prognostic effects seen in our report are consistent with several smaller reports (12, 13, 36). As we reported all *TP53* alterations identified (missense, nonsense, frameshift), we may be overestimating the frequency of pathogenic alterations but chose to do so because functional data to determine whether an alteration is pathogenic is not available for all alterations reported. Lung cancers with loss of *TP53* and resultant impaired cell-cycle control may be more sensitive to growth factor simulation leading to a survival advantage in preclinical models for lung cancers with concurrent *TP53* and *EGFR* alterations. The high frequency of *TP53* alterations and their association with inferior outcomes suggest that this subset of patients may benefit from combination treatment strategies as initial treatment in an attempt to improve survival and response to *EGFR* TKI. Interestingly, we found *TP53* and *RB1* alterations to be essentially clonal

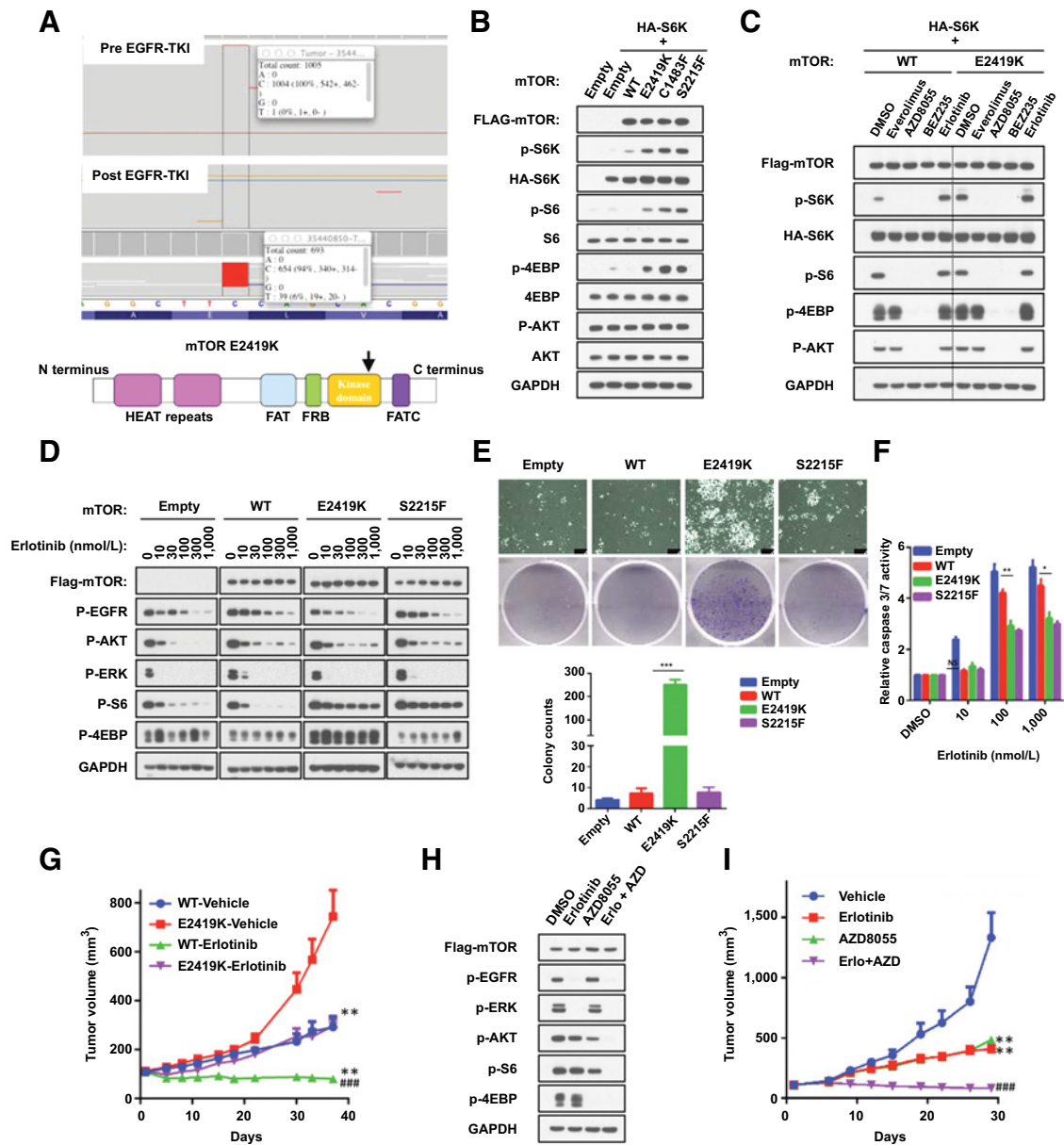


Figure 6.

Functional analysis of acquired *mTOR* E2419K mutation in erlotinib-resistant *EGFR*-mutant NSCLC. **A**, MSK-IMPACT analysis of paired samples before and after EGFR-TKI resistance revealed an acquired *mTOR* E2419K mutation. **B**, 293T cells were transiently transfected with pcDNA3 Flag-*mTOR* (WT, E2419K, S1483F, S2215F), vector control, or HA-S6K1. Thirty-six hours after the transfection, cells were serum starved overnight and subsequently nutrition starved in PBS for 1 hour. Lysates were subjected to immunoblotting. Band intensities were quantified using ImageJ software, and data are representative of two independent experiments (mean ± SE). ***, *P* < 0.001, compared with the respective WT+S6K1 group. **C**, 293T cells were transiently transfected with pcDNA3 *mTOR* (wild-type, E2419K), vector control, or HA-S6K1. Forty-eight hours after the transfection, cells were treated with everolimus (100 nmol/L), AZD8055 (500 nmol/L), BEZ235 (500 nmol/L), or erlotinib (1 μmol/L) for 3 hours and then subjected to immunoblotting. **D**, Isogenic stable PC9-*mTOR* lines were treated with increasing concentrations of erlotinib for 3 hours without serum and lysates were subjected to immunoblotting. **E**, A total 1.5×10^4 of cells were plated in six-well plates, and treated with 1 μmol/L erlotinib for 14 days. The number of colonies was analyzed using ImageJ. Each experiment was assayed in duplicate determinations and data are representative of three independent experiments (mean ± SE). **F**, Caspase-3/7 activity was analyzed in stable PC9-*mTOR* lines that were treated with increasing concentrations of erlotinib for 48 hours. Each experiment was assayed in duplicate determinations and data are representative of three independent experiments (mean ± SE). *, *P* < 0.05 and **, *P* < 0.01 compared with PC9-*mTOR* WT group. **G**, PC9-*mTOR* WT and E2419K cells were implanted into a subcutaneous flank of athymic nude mice. When tumors reached approximately 100 mm³, mice were treated with vehicle or 25 mg/kg erlotinib daily. Tumor volume was determined on the indicated days after the onset of treatment. Data represent mean ± SE (*n* = 5). *, *P* < 0.05, compared with the respective vehicle-treated group. #, *P* < 0.05, compared with erlotinib-treated PC9-*mTOR* WT group. **H**, PC9-*mTOR* E2419K cells were treated with erlotinib (1 μmol/L), AZD8055 (500 nmol/L), or a combination of erlotinib (1 μmol/L) and AZD8055 (500 nmol/L) for 3 hours. Lysates were then subjected to immunoblotting. **I**, PC9-*mTOR* E2419K cells were implanted subcutaneously into the flank of athymic nude mice. Once tumors reached approximately 100 mm³, mice were treated with vehicle, 25 mg/kg erlotinib, 20 mg/kg AZD8055, or a combination of 25 mg/kg erlotinib and 20 mg/kg AZD8055 daily. Tumor volume was determined on the indicated days after the onset of treatment. Data represent mean ± SE (*n* = 5). *, *P* < 0.05, compared with the vehicle-treated group. #, *P* < 0.05, compared with erlotinib only-treated group.

in the majority of paired samples, suggesting this truncal mutation occurred early in oncogenesis.

Concurrent *ERBB2* (HER2) and *MET* amplification were less common (4% and 2%, respectively), but were also independent predictors of shorter time to progression on EGFR TKI, and may be particularly clinically actionable given the clinical availability of MET and HER2 inhibitors. These copy number alterations of *ERBB2* and *MET* were also enriched in specimens obtained after EGFR TKI resistance. Concurrent activation of *ERBB2* or *MET*, both representing parallel or "bypass" signaling pathways that share downstream effectors with EGFR such as the RAS/RAF/MEK and PI3K/AKT pathways, have been shown in laboratory studies to make tumor cells less dependent on EGFR for activation of these downstream effectors, thereby reducing the antitumor efficacy of EGFR TKIs (37, 38). Such patients clearly represent a subset that may benefit from dual EGFR/HER2 or EGFR/MET combination treatment as initial therapy in order to fully inhibit downstream signaling and thus prevent or delay the emergence of drug resistance clones.

Transformation from lung adenocarcinoma to small-cell lung cancer in patients with *EGFR*-mutant lung cancer is an uncommon but clinically important event. As expected, in all patients with small-cell transformation, there was loss of *TP53* and *RB1* (39, 40). There were *TP53* and *RB1* mutations in the pretreatment adenocarcinoma sample of the one patient with small-cell transformation, consistent with earlier reports that *RB1* and *TP53* inactivation is an early event in patients with eventual small-cell transformation (40). As we further identified *RB1* loss in 11% of patient samples prior to EGFR TKI therapy and concurrent *RB1* and *TP53* loss in 9% ($n = 18$) of baseline tumor samples, these results suggest that co-mutations in these genes are likely required but insufficient to induce a small-cell phenotype. This may be a subset of patients where upfront treatment strategies that address a potential preexisting small-cell clone and/or a predisposition to small-cell transformation could be important.

In the tumor samples collected after progression on EGFR TKI, EGFR T790M was frequently identified. All of the major previously reported mechanisms of EGFR TKI resistance were seen in our cohort including small-cell transformation, *MET* and *ERBB2* amplification, and *BRAF* and *PIK3CA* mutations. When comparing the posttreatment samples to the unmatched pretreatment samples, *EGFR* T790M, *BRAF* alterations, *CDKN2A/B* alterations, *FGFR3* alterations, and *EGFR* and *MET* amplification were all enriched in the posttreatment samples suggesting they can contribute to acquired resistance to EGFR TKI therapy. In addition to the known resistance alterations, *CDKN2A* loss has been associated with under expression of *DUSP4*, which plays a central role in negative feedback regulation of EGFR signaling (41) providing a biologic rationale for its role in acquired resistance. *FGFR3* alterations have also been implicated in mediating EGFR TKI resistance, potentially through epithelial to mesenchymal transition (42–44).

Thirty-eight patients had paired tumor samples collected before and after treatment with an EGFR TKI. In addition to the established mechanisms of resistance to EGFR TKI, several novel putative mechanisms of drug resistance were observed in the samples obtained upon disease progression including an *AGK-BRAF* fusion. *BRAF* fusions have been reported as oncogenic drivers in multiple solid tumors with case reports demonstrating responses to *MEK* inhibition (45). *BRAF* fusions were recently found to be enriched in patients with concurrent *EGFR* mutations (46), and this is the first report of an acquired *BRAF* fusion as a

candidate mechanism of resistance to EGFR TKI therapy. Putative loss-of-function *KEAP1* alterations are frequently seen in non-small cell lung cancer (47) and preclinical data implicate loss of *KEAP1* and resultant increased *NRF2* expression as mechanisms of resistance to RTK/MAPK pathway inhibition (48). This is the first report of a patient with an acquired *KEAP1* mutation in the setting of treatment with an EGFR TKI. SFK/FAK (Src family kinases and focal adhesion kinase) signaling can sustain downstream AKT and MAPK signaling in the setting of *EGFR* inhibition, and the SFK family member *YES1* was amplified in experimentally derived osimertinib-resistant *EGFR*-mutant cells (49), and separately, we have also identified *YES1* amplification in a transposon mutagenesis screen as a potential mechanism of resistance to afatinib (50). Here, for the first time, we identified *YES1* amplification in a patient after treatment with erlotinib, and this has potential therapeutic relevance as SFK inhibitors such as dasatinib could be utilized in this clinical situation. *FGFR* fusions have been reported in non-small cell lung cancers (51) and there is converging evidence that *FGFR* activation may induce resistance to EGFR inhibitors (42–44, 52). This is the first clinical report of an acquired *FGFR3-TACC3* fusion after treatment with an EGFR TKI.

We demonstrate that *mTOR* E2419K mutation can drive resistance to EGFR TKI treatment, much like mutations of other downstream RTK effectors (25, 53–55). This is the first report of an acquired *mTOR* mutation in a patient with *EGFR*-mutant lung cancer after treatment with erlotinib. We found that combination EGFR and mTOR inhibition controls tumor growth *in vivo* in EGFR TKI-resistant, *mTOR* E2419K-mutant NSCLC. Coincidentally, this point mutation was reported in an urothelial carcinoma patient who achieved a complete response to everolimus and pazopanib therapy demonstrating that mTOR E2419K may be clinically actionable (56).

TMB is emerging as a predictive biomarker of response to immunotherapy (21). Most *EGFR*-mutant lung cancers are largely resistant to immune checkpoint inhibitors with only limited responses to immunotherapies seen in this subset of patients (23). Nonetheless, there is continued interest in identifying subsets of *EGFR*-mutant lung cancer patients more likely to respond to immunotherapy, and also to identify the optimal timing of immunotherapy in this population. Notably, we observed a small, but significant increase in TMB after treatment with EGFR TKIs. Available treatment algorithms do not currently incorporate temporal changes in TMB to guide the timing of potential immunotherapy treatment. In a population that is largely resistant to immunotherapy (23), such temporal changes in TMB may suggest that immunotherapy is better attempted after TKI therapy. However, there are also substantial preclinical data to suggest that targeted therapies can modulate immune responses by affecting T cell priming, activation, and differentiation and the tumor microenvironment (57), such that there may be multiple factors at play, and thus more data are needed to determine the optimal sequence of targeted therapies and immunotherapies in patients with *EGFR*-mutant lung cancers.

In summary, our analysis further defines the genomic diversity present among lung cancers with an established oncogenic driver and makes clearer the impact of concurrent alterations on patient outcomes. A recent paper has reported on genetic alterations seen in cell-free DNA (cfDNA) from a large cohort of patients with *EGFR*-mutant lung cancer and identified alterations in *CDK4/6*, *CTNNB1* and *PIK3CA* as relevant to EGFR TKI response (35). As

we learn more about the prognostic and predictive significance of concurrent genetic alterations, we may be able to use this information to improve outcomes for our patients.

Concurrent alterations that portend poorer outcomes in patients with EGFR-mutant lung cancers could be used in future studies to guide the selection of combination treatment strategies implemented at treatment onset for certain higher-risk patients. We need to continue to collect data regarding concurrent alterations from both tumor tissue and tumor cfDNA to better clarify predictive and prognostic markers of response as well as to highlight relevant acquired alterations that emerge as mechanisms of resistance to EGFR TKIs. Moving forward, the use of next-generation sequencing to molecularly profile tumors will, and should, become increasingly routine and we will need to develop strategies to nimbly assess and initiate appropriate combination therapies based on an individual patient's sequencing results.

Disclosure of Potential Conflicts of Interest

H. Yu reports receiving other commercial research support from AstraZeneca, Lilly Oncology, Daiichi, and Novartis, and is a consultant/advisory board member for AstraZeneca. M.G. Kris reports receiving other commercial research support from AstraZeneca. M.D. Hellmann is a consultant/advisory board member for Genentech and AstraZeneca. B.T. Li is a consultant/advisory board member for ThermoFisher Scientific and Guardant Health. D.B. Solit is a consultant/advisory board member for Pfizer and Loxo Oncology. G.J. Riely is a consultant/advisory board member for Genentech/Roche. M. Ladanyi is a consultant/advisory board member for Bristol-Myers Squibb, National Com-

prehensive Cancer Network, and Merck. No potential conflicts of interest were disclosed by the other authors.

Authors' Contributions

Conception and design: H.A. Yu, K. Suzawa, M.G. Kris, M.D. Hellmann, D.B. Solit, M. Arcila, G.J. Riely, M. Ladanyi

Development of methodology: H.A. Yu, K. Suzawa, M.G. Kris, M.D. Hellmann, B.T. Li, D.B. Solit, M. Arcila, G.J. Riely, M. Ladanyi

Acquisition of data (provided animals, acquired and managed patients, provided facilities, etc.): H.A. Yu, K. Suzawa, E. Jordan, A. Zehir, M.G. Kris, M.D. Hellmann, B.T. Li, R. Somwar, D.B. Solit, M. Arcila, G.J. Riely, M. Ladanyi

Analysis and interpretation of data (e.g., statistical analysis, biostatistics, computational analysis): H.A. Yu, K. Suzawa, A. Zehir, A. Ni, R. Kim, M.G. Kris, M.D. Hellmann, B.T. Li, D.B. Solit, M.F. Berger, M. Arcila, G.J. Riely, M. Ladanyi

Writing, review, and/or revision of the manuscript: H.A. Yu, K. Suzawa, A. Zehir, A. Ni, M.G. Kris, M.D. Hellmann, B.T. Li, R. Somwar, D.B. Solit, G.J. Riely, M. Ladanyi

Administrative, technical, or material support (i.e., reporting or organizing data, constructing databases): H.A. Yu, E. Jordan, M.G. Kris, D.B. Solit, G.J. Riely

Study supervision: H.A. Yu, M.G. Kris, M. Ladanyi

Acknowledgments

This work was supported, in part, by the NIH P01 CA129243 (to M. Kris/M. Ladanyi), and the NIH P30 CA008748 (MSKCC).

Received October 11, 2017; revised January 18, 2018; accepted March 6, 2018; published first March 12, 2018.

References

- Sequist LV, Yang JC, Yamamoto N, O'Byrne K, Hirsh V, Mok T, et al. Phase III study of afatinib or cisplatin plus pemetrexed in patients with metastatic lung adenocarcinoma with EGFR mutations. *J Clin Oncol* 2013;31:3327-34.
- Rosell R, Carcereny E, Gervais R, Vergnenegre A, Massuti B, Felip E, et al. Erlotinib versus standard chemotherapy as first-line treatment for European patients with advanced EGFR mutation-positive non-small-cell lung cancer (EURTAC): a multicentre, open-label, randomised phase 3 trial. *Lancet Oncol* 2012;13:239-46.
- Kosaka T, Tanizaki J, Paranal RM, Endoh H, Lydon C, Capelletti M, et al. Response heterogeneity of EGFR and HER2 Exon 20 insertions to covalent EGFR and HER2 inhibitors. *Cancer Res* 2017;77:2712-1.
- Haidoo J, Sima CS, Rodriguez K, Busby N, Nafa K, Ladanyi M, et al. Epidermal growth factor receptor exon 20 insertions in advanced lung adenocarcinomas: Clinical outcomes and response to erlotinib. *Cancer* 2015;121:3212-20.
- Kobayashi Y, Togashi Y, Yatabe Y, Mizuuchi H, Jangchul P, Kondo C, et al. EGFR Exon 18 mutations in lung cancer: molecular predictors of augmented sensitivity to afatinib or neratinib as compared with first- or third-generation TKIs. *Clin Cancer Res* 2015;21:5305-13.
- Huang CL, Taki T, Adachi M, Konishi T, Higashiyama M, Kinoshita M, et al. Mutations of p53 and K-ras genes as prognostic factors for non-small cell lung cancer. *Int J Oncol* 1998;12:553-63.
- Fukuyama Y, Mitsudomi T, Sugio K, Ishida T, Akazawa K, Sugimachi K. K-ras and p53 mutations are an independent unfavourable prognostic indicator in patients with non-small-cell lung cancer. *Br J Cancer* 1997;75:1125-30.
- Koivunen JP, Kim J, Lee J, Rogers AM, Park JO, Zhao X, et al. Mutations in the LKB1 tumour suppressor are frequently detected in tumours from Caucasian but not Asian lung cancer patients. *Br J Cancer* 2008;99:245-52.
- Ji H, Ramsey MR, Hayes DN, Fan C, McNamara K, Kozlowski P, et al. LKB1 modulates lung cancer differentiation and metastasis. *Nature* 2007;448:807-10.
- Chen Z, Cheng K, Walton Z, Wang Y, Ebi H, Shimamura T, et al. A murine lung cancer co-clinical trial identifies genetic modifiers of therapeutic response. *Nature* 2012;483:613-7.
- Mahoney CL, Choudhury B, Davies H, Edkins S, Greenman C, Haafteen Gv, et al. LKB1/KRAS mutant lung cancers constitute a genetic subset of NSCLC with increased sensitivity to MAPK and mTOR signalling inhibition. *Br J Cancer* 2009;100:370-5.
- Canale M, Petracci E, Delmonte A, Chiadini E, Dazzi C, Papi M, et al. Impact of TP53 mutations on outcome in EGFR-mutated patients treated with first-line tyrosine kinase inhibitors. *Clin Cancer Res* 2017;23:2195-202.
- VanderLaan PA, Rangachari D, Mockus SM, Spoltow V, Reddi HV, Malcolm J, et al. Mutations in TP53, PIK3CA, PTEN and other genes in EGFR mutated lung cancers: Correlation with clinical outcomes. *Lung Cancer* 2017;106:17-21.
- Faber AC, Corcoran RB, Ebi H, Sequist LV, Waltman BA, Chung E, et al. BIM expression in treatment-naive cancers predicts responsiveness to kinase inhibitors. *Cancer Discov* 2011;1:352-65.
- Costa DB, Halmos B, Kumar A, Schumer ST, Huberman MS, Boggon TJ, et al. BIM mediates EGFR tyrosine kinase inhibitor-induced apoptosis in lung cancers with oncogenic EGFR mutations. *PLoS Med* 2007;4:1669-79.
- Gong Y, Somwar R, Politi K, Balak M, Chmielecki J, Jiang X, et al. Induction of BIM is essential for apoptosis triggered by EGFR kinase inhibitors in mutant EGFR-dependent lung adenocarcinomas. *PLoS Med* 2007;4:e294.
- Ng KP, Hillmer AM, Chuah CT, Juan WC, Ko TK, Teo AS, et al. A common BIM deletion polymorphism mediates intrinsic resistance and inferior responses to tyrosine kinase inhibitors in cancer. *Nat Med* 2012;18:521-8.
- Yu HA, Arcila ME, Hellmann MD, Kris MG, Ladanyi M, Riely GJ. Poor response to erlotinib in patients with tumors containing baseline EGFR T790M mutations found by routine clinical molecular testing. *Ann Oncol* 2014;25:423-8.
- Su KY, Chen HY, Li KC, Kuo ML, Yang JC, Chan WK, et al. Pretreatment epidermal growth factor receptor (EGFR) T790M mutation predicts shorter EGFR tyrosine kinase inhibitor response duration in patients with non-small-cell lung cancer. *J Clin Oncol* 2012;30:433-40.
- Rosell R, Molina MA, Costa C, Simonetti S, Gimenez-Capitan A, Bertran-Alamillo J, et al. Pretreatment EGFR T790M mutation and BRCA1 mRNA expression in erlotinib-treated advanced non-small-cell lung cancer patients with EGFR mutations. *Clin Cancer Res* 2011;17:1160-8.
- Rizvi NA, Hellmann MD, Snyder A, Kvistborg P, Makarov V, Havel JJ, et al. Cancer immunology. Mutational landscape determines sensitivity to PD-1 blockade in non-small cell lung cancer. *Science* 2015;348:124-8.

22. Patel SP, Kurzrock R. PD-L1 expression as a predictive biomarker in cancer immunotherapy. *Mol Cancer Ther* 2015;14:847–56.
23. Gainor JF, Shaw AT, Sequist LV, Fu X, Azzoli CG, Piotrowska Z, et al. EGFR mutations and ALK rearrangements are associated with low response rates to PD-1 pathway blockade in non-small cell lung cancer: a retrospective analysis. *Clin Cancer Res* 2016;22:4585–93.
24. Yu HA, Arcila ME, Rekhtman N, Sima CS, Zakowski MF, Pao W, et al. Analysis of tumor specimens at the time of acquired resistance to EGFR-TKI therapy in 155 patients with EGFR-mutant lung cancers. *Clin Cancer Res* 2013;19:2240–7.
25. Sequist LV, Waltman BA, Dias-Santagata D, Digumarthy S, Turke AB, Fidias P, et al. Genotypic and histological evolution of lung cancers acquiring resistance to EGFR inhibitors. *Sci Transl Med* 2011;3:75ra26.
26. Cheng DT, Mitchell TN, Zehir A, Shah RH, Benayed R, Syed A, et al. Memorial sloan kettering-integrated mutation profiling of actionable cancer targets (MSK-IMPACT): a hybridization capture-based next-generation sequencing clinical assay for solid tumor molecular oncology. *J Mol Diagn* 2015;17:251–64.
27. Zehir A, Benayed R, Shah RH, Syed A, Middha S, Kim HR, et al. Mutational landscape of metastatic cancer revealed from prospective clinical sequencing of 10,000 patients. *Nat Med* 2017;23:703–713.
28. Greenman CD, Pleasance ED, Newman S, Yang F, Fu B, Nik-Zainal S, et al. Estimation of rearrangement phylogeny for cancer genomes. *Genome Res* 2012;22:346–61.
29. Jordan EJ, Kim HR, Arcila ME, Barron D, Chakravarty D, Gao J, et al. Prospective comprehensive molecular characterization of lung adenocarcinomas for efficient patient matching to approved and emerging therapies. *Cancer Discov* 2017;7:596–609.
30. Xu J, Pham CG, Albanese SK, Dong Y, Oyama T, Lee CH, et al. Mechanistically distinct cancer-associated mTOR activation clusters predict sensitivity to rapamycin. *J Clin Invest* 2016;126:3526–40.
31. Grabiner BC, Nardi V, Birsoy K, Possemato R, Shen K, Sinha S, et al. A diverse array of cancer-associated MTOR mutations are hyperactivating and can predict rapamycin sensitivity. *Cancer Discov* 2014;4:554–63.
32. Ma X, Le Teuff G, Lacas B, Tsao MS, Graziano S, Pignon JP, et al. Prognostic and predictive effect of TP53 mutations in patients with non-small cell lung cancer from adjuvant cisplatin-based therapy randomized trials: a LACEbio pooled analysis. *J Thorac Oncol* 2016;11:850–61.
33. Chiba I, Takahashi T, Nau MM, D'Amico D, Curiel DT, Mitsudomi T, et al. Mutations in the p53 gene are frequent in primary, resected non-small cell lung cancer. *Lung Cancer Study Group. Oncogene* 1990;5:1603–10.
34. Schwaederle M, Lazar V, Validire P, Hansson J, Lacroix L, Soria JC, et al. VEGF-A expression correlates with TP53 mutations in non-small cell lung cancer: implications for antiangiogenesis therapy. *Cancer Res* 2015;75:1187–90.
35. Blakely CM, Watkins TBK, Wu W, Gini B, Chabon JJ, McCoach CE, et al. Evolution and clinical impact of co-occurring genetic alterations in advanced-stage EGFR-mutant lung cancers. *Nat Genet* 2017;49:1693–1704.
36. Lim SM, Kim HR, Cho EK, Min YJ, Ahn JS, Ahn MJ, et al. Targeted sequencing identifies genetic alterations that confer primary resistance to EGFR tyrosine kinase inhibitor (Korean Lung Cancer Consortium). *Oncotarget* 2016;7:36311–36320.
37. Engelman JA, Zejnullahu K, Mitsudomi T, Song Y, Hyland C, Park JO, et al. MET amplification leads to gefitinib resistance in lung cancer by activating ERBB3 signaling. *Science* 2007;316:1039–43.
38. Takezawa K, Pirazzoli V, Arcila ME, Nebhan CA, Song X, de Stanchina E, et al. HER2 amplification: a potential mechanism of acquired resistance to EGFR inhibition in EGFR mutant lung cancers that lack the second-site EGFR T790M mutation. *Cancer Discov* 2012;2:922–33.
39. Peifer M, et al. Integrative genome analyses identify key somatic driver mutations of small-cell lung cancer. *Nat Genet* 2012;44:1104–10.
40. Lee JK, Lee J, Kim S, Kim S, Youk J, Park S, et al. Clonal history and genetic predictors of transformation into small-cell carcinomas from lung adenocarcinomas. *J Clin Oncol* 2017;35:3065–74.
41. Chitale D, Gong Y, Taylor BS, Broderick S, Brennan C, Somwar R, et al. An integrated genomic analysis of lung cancer reveals loss of DUSP4 in EGFR-mutant tumors. *Oncogene* 2009;28:2773–83.
42. Ware KE, Marshall ME, Heasley LR, Marek L, Hinz TK, Hercule P, et al. Rapidly acquired resistance to EGFR tyrosine kinase inhibitors in NSCLC cell lines through de-repression of FGFR2 and FGFR3 expression. *PLoS One* 2010;5:e14117.
43. Thomson S, Petti F, Sujka-Kwok I, Epstein D, Haley JD. Kinase switching in mesenchymal-like non-small cell lung cancer lines contributes to EGFR inhibitor resistance through pathway redundancy. *Clin Exp Metastasis* 2008;25:843–54.
44. Azuma K, Kawahara A, Sonoda K, Nakashima K, Tashiro K, Watari K, et al. FGFR1 activation is an escape mechanism in human lung cancer cells resistant to afatinib, a pan-EGFR family kinase inhibitor. *Oncotarget* 2014;5:5908–19.
45. Ross JS, Wang K, Chmielecki J, Gay L, Johnson A, Chudnovsky J, et al. The distribution of BRAF gene fusions in solid tumors and response to targeted therapy. *Int J Cancer* 2016;138:881–90.
46. Reddy VP, Gay LM, Elvin JA, Vergilio J, Suh J, Ramkissoon S, et al. BRAF fusions in clinically advanced non-small cell lung cancer: an emerging target for anti-BRAF therapies. *J Clin Oncol* 2017;35:9072.
47. Singh A, Misra V, Thimmulappa RK, Lee H, Ames S, Hoque MO, et al. Dysfunctional KEAP1-NRF2 interaction in non-small-cell lung cancer. *PLoS Med* 2006;3:e420.
48. Krall EB, Wang B, Munoz DM, Ilic N, Raghavan S, Niederst MJ, et al. KEAP1 loss modulates sensitivity to kinase targeted therapy in lung cancer. *ELife* 2017;6:e18970.
49. Ichihara E, Westover D, Meador CB, Yan Y, Bauer JA, Lu P, et al. SFK/FAK signaling attenuates osimertinib efficacy in both drug-sensitive and drug-resistant models of EGFR-mutant lung cancer. *Cancer Res* 2017;77:2990–3000.
50. Fan PD, Narzisi G, Jayaprakash A, Venturini E, Robine N, Smibert P, et al. YES1 amplification is a mechanism of acquired resistance to EGFR inhibitors identified by transposon mutagenesis and clinical genomics. *Proc Natl Acad Sci USA* (in press).
51. Wang R, Wang L, Li Y, Hu H, Shen L, Shen X, et al. FGFR1/3 tyrosine kinase fusions define a unique molecular subtype of non-small cell lung cancer. *Clin Cancer Res* 2014;20:4107–14.
52. Ware KE, Hinz TK, Kleczko E, Singleton KR, Marek LA, Helfrich BA, et al. A mechanism of resistance to gefitinib mediated by cellular reprogramming and the acquisition of an FGF2-FGFR1 autocrine growth loop. *Oncogenesis* 2013;2:e39.
53. Misale S, Yaeger R, Hobor S, Scala E, Janakiraman M, Liska D, et al. Emergence of KRAS mutations and acquired resistance to anti-EGFR therapy in colorectal cancer. *Nature* 2012;486:532–6.
54. Ohashi K, Sequist LV, Arcila ME, Moran T, Chmielecki J, Lin YL, et al. Lung cancers with acquired resistance to EGFR inhibitors occasionally harbor BRAF gene mutations but lack mutations in KRAS, NRAS, or MEK1. *Proc Natl Acad Sci U S A* 2012;109:E2127–33.
55. Engelman JA, Mukohara T, Zejnullahu K, Lifshits E, Borrás AM, Gale CM, et al. Allelic dilution obscures detection of a biologically significant resistance mutation in EGFR-amplified lung cancer. *J Clin Invest* 2006;116:2695–706.
56. Wagle N, Grabiner BC, Van Allen EM, Hodis E, Jacobus S, Supko JG, et al. Activating mTOR mutations in a patient with an extraordinary response on a phase I trial of everolimus and pazopanib. *Cancer Discov* 2014;4:546–53.
57. Vanneman M, Dranoff G. Combining immunotherapy and targeted therapies in cancer treatment. *Nat Rev Cancer* 2012;12:237–51.