

Metformin Decreases the Dose of Chemotherapy for Prolonging Tumor Remission in Mouse Xenografts Involving Multiple Cancer Cell Types

Dimitrios Iliopoulos, Heather A. Hirsch, and Kevin Struhl

Abstract

Metformin, the first-line drug for treating diabetes, selectively kills the chemotherapy resistant sub-population of cancer stem cells (CSC) in genetically distinct types of breast cancer cell lines. In mouse xenografts, injection of metformin and the chemotherapeutic drug doxorubicin near the tumor is more effective than either drug alone in blocking tumor growth and preventing relapse. Here, we show that metformin is equally effective when given orally together with paclitaxel, carboplatin, and doxorubicin, indicating that metformin works together with a variety of standard chemotherapeutic agents. In addition, metformin has comparable effects on tumor regression and preventing relapse when combined with a four-fold reduced dose of doxorubicin that is not effective as a monotherapy. Finally, the combination of metformin and doxorubicin prevents relapse in xenografts generated with prostate and lung cancer cell lines. These observations provide further evidence for the CSC hypothesis for cancer relapse, an experimental rationale for using metformin as part of combinatorial therapy in a variety of clinical settings, and for reducing the chemotherapy dose in cancer patients. *Cancer Res*; 71(9); 3196–201. ©2011 AACR.

Introduction

Although chemotherapeutic regimens often suppress tumor growth, cancer patients show high variability in their responses and commonly develop resistance to these drugs and recurrence of the tumor. To explain this phenomenon, the cancer stem cell (CSC) hypothesis suggests that tumors contain a small number of tumor-forming, self-renewing CSCs within a population of nontumor-forming cancer cells (1, 2). Unlike most cells within the tumor, CSCs are resistant to chemotherapy, and after treatment, they can regenerate all the cell types in the tumor through their stem cell–like behavior. A prediction of this CSC hypothesis is that treatments that selectively inhibit CSCs should function together with chemotherapeutic drugs to delay relapse. Strong support for the CSC hypothesis comes from our observations that metformin, the first-line drug for treating diabetes, and microRNA-200 (miR-200) selectively kill CSCs and act together with doxorubicin to reduce tumor growth and prolong remission (3, 4).

Another major problem that cancer patients face is the high toxicity of the chemotherapeutic drugs. The side effects include anemia, appetite changes, fatigue, hair loss, nausea,

vomiting, and fertility changes (5). On the contrary, lower doses of these chemotherapeutic agents are not effective in suppressing tumor growth. Thus, the identification of agents that can be combined with lower doses of the existing chemotherapeutic drugs is of high clinical relevance.

Epidemiologic studies have revealed that diabetes is correlated with increased cancer risk (6, 7), and that diabetics treated with metformin have reduced risk of developing various types of cancer (8, 9). In addition, mRNA profiling of 2 isogenic models of cellular transformation defined a transcriptional signature that links multiple types of cancer with diabetes and other metabolic diseases (10). Metformin is an extensively used and well-tolerated drug for treating individuals with type 2 diabetes, obesity, and polycystic ovarian syndrome. Metformin inhibits growth of breast cancer cell lines (11–13), blocks cellular transformation in an inducible model system (3, 10), and has antitumor effects in mouse xenografts (3, 10, 14, 15). As mentioned above, we showed that metformin selectively inhibits the growth of CSCs in genetically distinct breast cancer cell lines. Furthermore, in mouse xenografts involving a human breast cancer cell line, coinjection of metformin and doxorubicin intraperitoneally (i.p.) near the tumor increases the rate of tumor regression compared with treatment with doxorubicin alone, and this combinatorial therapy prevents relapse for at least several months (3).

Our previous studies of metformin-based combinatorial therapy in mouse xenografts were carried out by i.p. injection, and they involved a single concentration of one chemotherapeutic agent and tumors generated by a single breast cancer cell line. Here, we extend these studies to address (i) the efficacy of metformin administered orally as compared

Authors' Affiliation: Department of Biological Chemistry and Molecular Pharmacology, Harvard Medical School, Boston, Massachusetts

Corresponding Author: Kevin Struhl, Department of Biological Chemistry and Molecular Pharmacology, Harvard Medical School, Boston, MA 02115. Phone: 617-432-2104; Fax: 617-432-2529; E-mail: kevin@hms.harvard.edu

doi: 10.1158/0008-5472.CAN-10-3471

©2011 American Association for Cancer Research.

with i.p. injection, (ii) the ability of metformin to act together with chemotherapeutic agents other than doxorubicin, (iii) the effect of metformin on the concentration of chemotherapeutic drugs needed for a prolonging remission, and (iv) whether combinatorial therapy involving metformin is effective on other cancer cell types. Our results show that oral administration of metformin is effective with multiple chemotherapeutic agents and multiple cancer cell types, and that metformin can reduce the dose of chemotherapy necessary to prolong remission. These preclinical observations strongly support the use of metformin-based combinatorial chemotherapy in multiple cancer contexts, and they provide further evidence for the CSC hypothesis for relapse.

Materials and Methods

Cell lines

MCF-10A cells are mammary epithelial cells derived from fibrocystic breast tissue from women with no family history of breast cancer and no evidence of disease; these cells do not express estrogen receptor (ER). The experiments here use a derivative of MCF-10A containing an integrated fusion of the v-Src oncoprotein with the ligand-binding domain of ER (3). BT-474 cells are human breast carcinoma cells that over-express HER2 receptor, whereas MDA-MB-231 cells are human mammary adenocarcinoma cells with mutation in p53 and overexpression of epidermal growth factor (EGF) receptor and are highly metastatic. PC3 cells are highly metastatic grade IV prostate adenocarcinoma cells, and A549 cells are human lung epithelial carcinoma cells.

Cell culture

BT-474, MDA-MB-231, and PC3 cells were grown in DMEM media (Invitrogen), 10% FBS (Atlanta Biologicals), and penicillin/streptomycin (Invitrogen) at 37°C with 5% CO₂. A549 cells were grown in RPMI1640 media (Invitrogen), 10% FBS (Atlanta Biologicals), and penicillin/streptomycin (Invitrogen) at 37°C with 5% CO₂. MCF10A ER-Src cells were cultured as described previously (16) and induced to transform with 1 μM 4OH-tamoxifen dissolved (Sigma) in ethanol. Transformation occurred 36 hours after tamoxifen treatment.

Chemicals

Metformin was dissolved in water and was typically added to 0.1 mmol/L. Doxorubicin and paclitaxel were dissolved in dimethyl sulfoxide, and carboplatin was dissolved in water. All chemicals were obtained from Sigma–Aldrich.

Mammosphere culture

Mammospheres were cultured in suspension (1,000 cells/mL) in serum-free DMEM/F12 media, supplemented with B27 (1:50; Invitrogen), 0.4% bovine serum albumin, 20 ng/mL EGF (Preprotech), and 4 μg/mL insulin (Sigma) as described previously (16). Mammosphere growth was tested by placing purified CD44^{high}/CD24^{low} cells from 3 human mammary adenocarcinoma tissues in suspension, and adding metformin to 6-day-old mammospheres and counting the number of mammospheres 2 days after treatment.

Human breast tissues

Three snap-frozen ductal carcinoma tissues were purchased from AMS Biotechnology and Biochain Inc. The purification process of CD44^{high} and CD24^{high} derived from human breast tumors has been previously described (17–19), and it is detailed in the Supplementary Methods.

Xenograft experiments

Cancer cells (5×10^6) were injected into the right flank of female *nu/nu* mice (Charles River Laboratories), all of which developed tumors in 10 days with size of approximately 55 mm³. For each experiment, mice were randomly distributed into equal groups (3–4 mice per group) that were untreated, or treated by intratumoral injections every 5 days (4 cycles) with 1 mg/kg or 4 mg/kg doxorubicin, 10 mg/kg paclitaxel, 20 mg/kg carboplatin, 200 μg/mL metformin (diluted in drinking water and present throughout the experiment starting at day 10), or combinations that included metformin. Tumor volume (mean ± SD; mm³) was measured at various times after the initial injection. All the mouse experiments were conducted in accordance with Institutional Animal Care and Use Committee procedures and guidelines of Tufts University.

Results

Oral administration of metformin is equally effective as intraperitoneal injection near the tumor

In our previous experiments showing that the combination of metformin and doxorubicin accelerates tumor regression and prolongs remission in mouse xenografts, the drugs were administered by i.p. injection near the tumors (3). However, clinical use of metformin in diabetes is typically conducted by oral administration, and this would clearly be a preferred treatment option. To test the effectiveness of oral administration of metformin, mice bearing tumors 10 days after injection of the ER-Src cells were treated with 4 mg/kg doxorubicin (4 cycles of intratumoral injection on days 10, 15, 20, and 25), 200 μg/mL metformin (in drinking water, which corresponds to 15 mg/kg), or the combination. This protocol involves continuous presence of metformin starting at day 10, which differs from the original procedure in which metformin treatment ceased after the last injection at 20 days.

In mice treated with doxorubicin alone, tumor growth was suppressed until day 40, after which time, the tumor growth resumed at rates near those observed for untreated control mice (Fig. 1A). Mice treated with metformin alone had reduced tumor growth in comparison with the untreated mice, and after day 45, there was a mild regression of the tumor. This level of regression is comparable to that achieved by i.p. injection of metformin at 20 mg/kg (10); injection of metformin alone at 2.5 mg/kg had very little effect on tumor formation (3). However, the combination of doxorubicin and metformin not only suppressed tumor growth, but it prolonged remission with no detectable tumor for at least 65 days. Similar results were obtained in xenografts generated by 2 genetically distinct breast cancer cell lines, BT-474 and MDA-MB-231 (Fig. 1A; BT-474 was more sensitive to doxorubicin

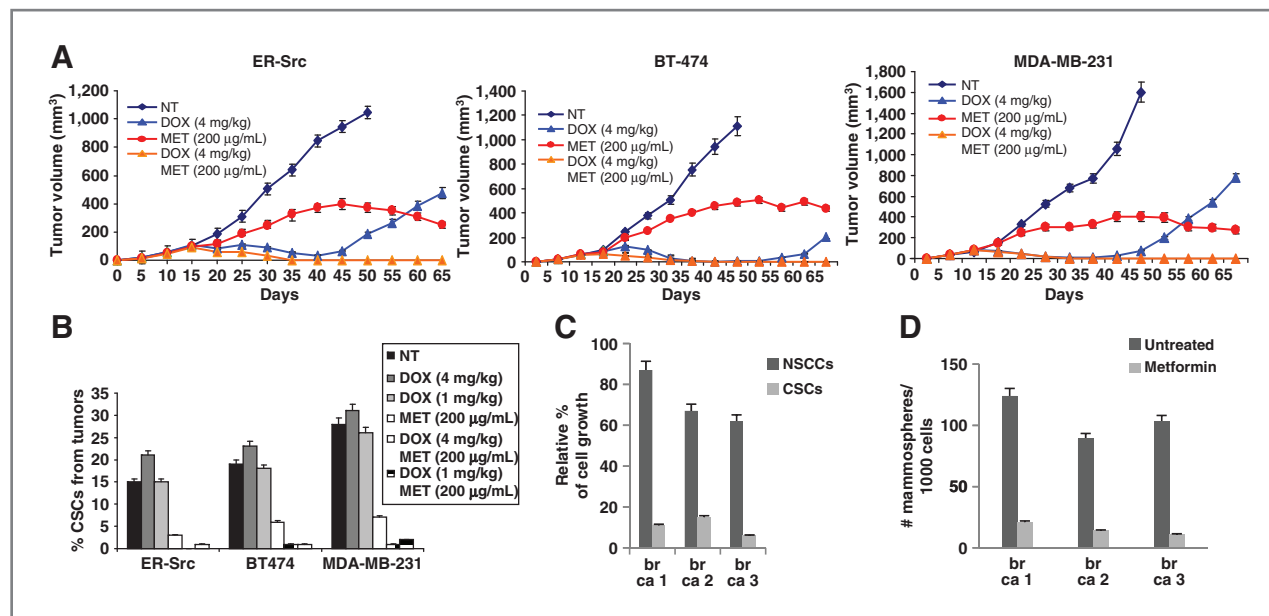


Figure 1. Oral administration of metformin (MET) together with doxorubicin (DOX) suppresses tumor growth and relapse in breast xenografts. **A**, tumor volume (mean \pm SD) in mice injected (on day 0) with transformed ER-Src cells, BT-474 cancer cells, and MDA-MB-231 cancer cells that were untreated (NT), treated by intratumoral injections (days 10, 15, 20, and 25) with 4 mg/kg doxorubicin, and treated continuously with metformin in drinking water (200 μ g/mL) starting at day 10 or both. Tumor volume was monitored 65 days after injection. **B**, percentage (mean \pm SD) of CD44^{high}/CD24^{low} cells (CSCs) from tumors derived from the indicated cell lines (day 25) in mice that were untreated, treated with doxorubicin (1 or 4 mg/kg), metformin (200 μ g/mL), or both. **C**, CD44^{high}/CD24^{low} cells (CSCs), and CD44^{low}/CD24^{high} nonstem cancer cells (NSCC) purified from human mammary adenocarcinomas were treated with metformin (0.1 mmol/L) for 48 hours or left untreated for the same amount of time. Data are presented as percentage of cell growth, which is determined by the number of metformin-treated cells divided by the number of untreated cells at the 48-hour time point. **D**, number of mammospheres per 1,000 cells derived from human mammary adenocarcinomas after treatment with metformin (0.1 mmol/L) for 48 hours.

alone, and metformin did not accelerate tumor regression in MDA-MB-231). Thus, oral administration of metformin is effective in combination with doxorubicin to accelerate tumor regression (except in tumors derived from MDA-MB-231) and prolong remission in xenografts involving a variety of breast cancer cell lines.

Metformin selectively kills CSCs in human breast tumors

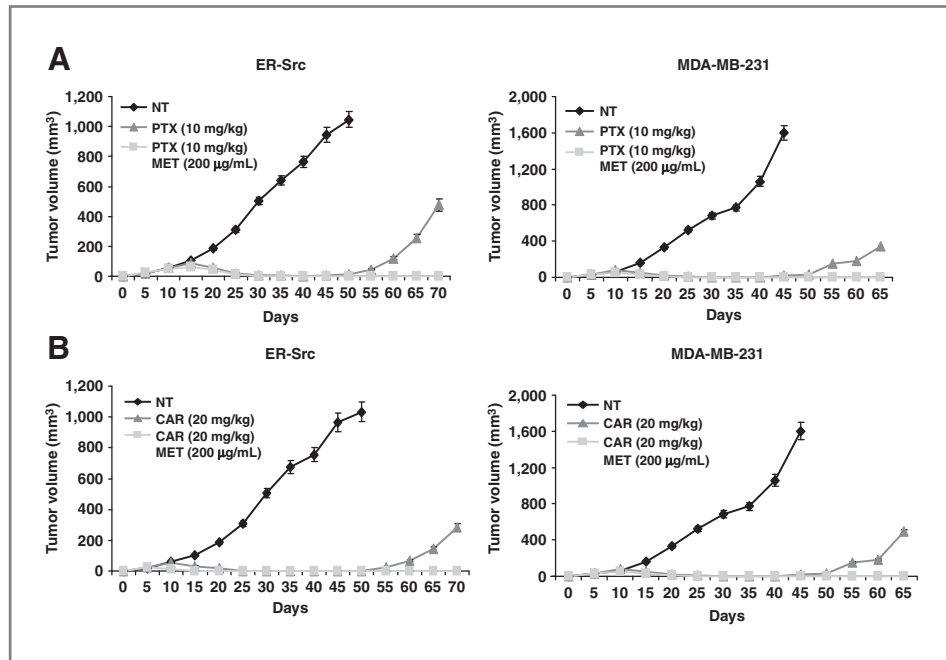
Metformin selectively kills CD44^{high}/CD24^{low} cells (3), which are commonly termed CSCs as defined by their ability to form self-renewing mammospheres and cause tumor formation at high efficiency (3, 4, 16). We will use the term CSC to refer to CD44^{high}/CD24^{low} cells throughout this work, even though such cells can be generated by interleukin 6 (IL-6) treatment of cancer cells and hence do not behave as classic stem cells (19). In accordance with our previous experiments involving i.p. injection, oral administration of metformin causes a decrease in the percentage of CSCs derived from tumors at day 25, whereas doxorubicin alone has no effect (Fig. 1B). Importantly, the combination of metformin and doxorubicin further reduces the percentage of CSCs, indicating that therapeutic advantage of oral administration of metformin is linked to its ability to inhibit CSC growth.

As is often the case for CSCs (1, 2), the CSCs examined here are largely resistant to doxorubicin treatment (3). However, the observation that the percentage of CSCs in the doxoru-

bicin-treated mice is similar to that of untreated mice suggests that doxorubicin effectively kills CSCs during tumor regression. We suggest that this apparent paradox is explained by the dynamic equilibrium between CSCs and nonstem cancer cells (NSCC) that occurs in cell culture and mouse xenografts and is mediated by IL-6 secretion (19). Specifically, the percentage of CSCs is relatively constant because differentiation of CSCs into NSCCs is balanced by IL-6-mediated conversion of NSCCs to CSCs. Thus, doxorubicin directly kills NSCCs, and this indirectly reduces the CSC population by preventing the IL-6-mediated conversion.

Because our previous results involved CSCs isolated from cancer cell lines, we examined whether metformin selectively inhibits the growth of CSCs from human breast tumors. CSCs (CD44^{high}/CD24^{low}) and NSCCs (CD44^{low}/CD24^{high}) were purified from human mammary adenocarcinomas and treated with doxorubicin and/or metformin. As expected, metformin preferentially kills CSCs over NSCCs derived from these human breast tumors (Fig. 1C), and it inhibits growth of mammospheres derived from these tumors (Fig. 1D). Thus, metformin selectively kills breast CSCs obtained from human cancer patients. As shown previously (3), selective killing of CSCs versus NSCCs is not absolute and depends on the metformin concentration. However, selective killing of CSCs clearly occurs at the metformin concentration used in xenograft experiments, and this concentration is roughly comparable to what is used to treat human patients with type 2 diabetes.

Figure 2. Combination of metformin with paclitaxel or carboplatin suppresses tumor growth and prolongs remission. A, tumor volume (mean \pm SD) in mice injected on day 0 with transformed ER-Src or MDA-MB-231 cancer cells that were untreated (NT), treated by intratumoral injections (days 10, 15, 20, and 25) with 10 mg/kg paclitaxel (PTX), or treated with paclitaxel together with metformin (MET) diluted in drinking water (200 μ g/mL). B, tumor volume in mice injected with transformed ER-Src or MDA-MB-231 cancer cells that were untreated (NT), treated by intratumoral injections (days 10, 15, 20, and 25) with 20 mg/kg carboplatin (CAR), or treated with carboplatin together with metformin diluted in drinking water (200 μ g/mL).

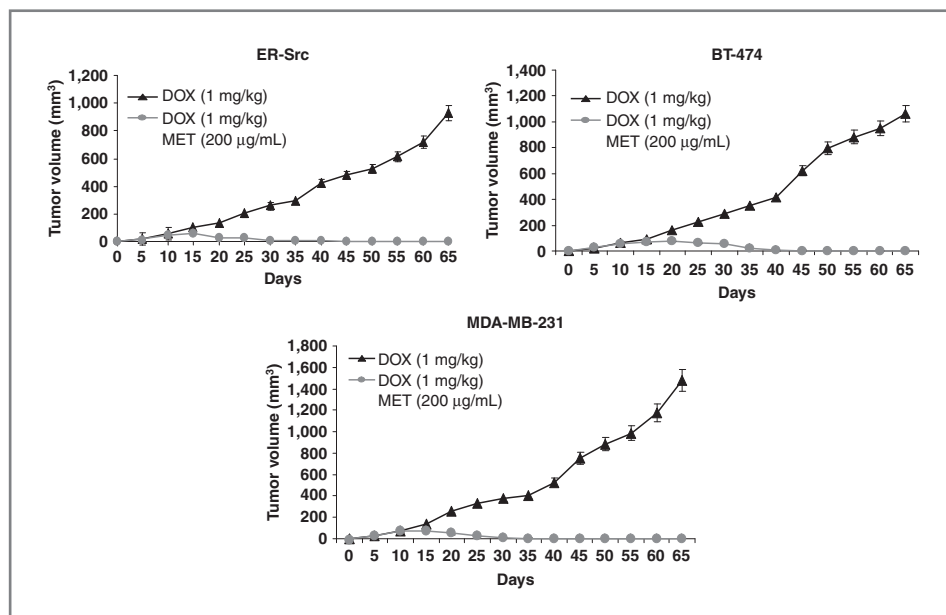


Metformin works in combination with multiple chemotherapeutic agents

According to the CSC hypothesis, combinatorial chemotherapy should be effective as long as one agent preferentially kills CSCs, whereas the other agent preferentially kills NSCCs. In this regard, metformin and miR-200 selectively inhibit CSCs, and each of these agents prolongs remission in combination with doxorubicin (3, 4). To address this issue in a reciprocal fashion, we examined the effectiveness of metformin in combination with paclitaxel or carboplatin, standard chemotherapeutic drugs for treating breast cancer patients as monotherapies

or with other biological therapies such as trastuzumab, a HER2 monoclonal antibody (20, 21). As monotherapies, treatment of ER-Src and MDA-MB-231 xenograft tumors with paclitaxel (Fig. 2A) or carboplatin (Fig. 2B) suppressed tumor growth but did not prevent relapse. At the concentrations used, these drugs were somewhat more effective than doxorubicin, as relapse occurred after 55–60 days as opposed to 50 days. Importantly, the combination of metformin with either paclitaxel or carboplatin prolonged relapse, similarly to that observed with doxorubicin. Thus, metformin-based combinatorial therapy is effective with at least 3 different

Figure 3. Metformin is effective when combined with lower doses of doxorubicin. Tumor volume (mean \pm SD) in mice injected on day 0 with the indicated cancer cells that were treated by intratumoral injections (days 10, 15, 20, and 25) with 1 mg/kg doxorubicin (DOX), metformin (MET) diluted in drinking water (200 μ g/mL), or both.



chemotherapeutic drugs, suggesting that metformin would be useful in combination with other chemotherapeutic agents that primarily target NSCCs.

Metformin can reduce the dose of doxorubicin necessary to prolong remission

Because chemotherapy is toxic and causes unwanted, and often serious, side effects in cancer patients (5), a major challenge is to lower the doses of chemotherapeutic drugs without decreasing their effectiveness. We reasoned that the combinatorial effect of metformin might permit the lowering of the doxorubicin dose. In addition, because CSCs can differentiate into NSCCs, metformin might indirectly lower the NSCC burden by inhibiting CSCs. To test this idea, we conducted oral, metformin-based combinatorial therapy in xenografts involving 3 different breast cancer cell lines using a 4-fold reduced concentration of doxorubicin from previous experiments (1 mg/kg instead of 4 mg/kg). As expected, the reduced dose of doxorubicin alone is less effective, as tumor growth was slowed compared with untreated control mice, but tumor regression was not observed (Fig. 3). Nevertheless, the combination of metformin with this reduced dose of chemotherapy resulted in complete tumor regression and no detectable relapse for at least 65 days. Indeed, in the presence of metformin, the lowered dose of chemotherapy was equally as effective as the higher dose. These preclinical

observations suggest the possibility of using metformin to lower the chemotherapy dose in breast cancer patients.

Metformin-based combinatorial therapy is effective in xenografts generated with breast, prostate, and lung cancer cell lines

Because our results have been confined to breast cancer cells, we examined whether metformin-based combinatorial therapy would be effective in other cancer types. Indeed, combinatorial treatment of metformin and doxorubicin suppresses growth of prostate (PC3) and lung adenocarcinoma (A549) xenografts tumors, and inhibits their relapse (Fig. 4A and 4B). Tumor regression upon treatment is modestly accelerated by the combination of metformin and doxorubicin, with a slightly more pronounced effect observed with the higher doxorubicin dose than the lower dose. However, the absence of relapse due to metformin treatment was comparable at both doses of doxorubicin for the time frame of the experiment.

Discussion

Our preclinical studies in mouse xenografts indicate that oral administration of metformin together with widely used chemotherapeutic drugs such as doxorubicin, paclitaxel, and carboplatin is highly effective in blocking tumor growth and preventing relapse in a variety of cancer cell types. In addition, metformin is effective in combination with reduced dosages of doxorubicin (and presumably other standard chemotherapeutic drugs), and hence seems to increase the effectiveness of standard chemotherapy. Because metformin functions in the context of breast cancer cell xenografts by selectively killing breast CSCs, our results suggest the possibility that it might preferentially inhibit highly tumorigenic (CSC-like) cells in other developmental lineages. Our observations indicate that metformin has broad anticancer effects of potential utility in a wide variety of clinical contexts both for cancer treatment and lowering the toxicity associated with standard chemotherapy. Because metformin is a long-approved drug with an excellent safety record, clinical tests of these preclinical observations are practical and of potential medical significance for some (and perhaps many) types of cancer.

Disclosure of Potential Conflicts of Interest

No potential conflicts of interest were disclosed.

Acknowledgments

We thank Guannan Wang for help with the CSC experiments.

Grant Support

This work was supported by grants to K. Struhl from the Alexander and Margaret Stewart Trust and the NIH (CA 107486).

The costs of publication of this article were defrayed in part by the payment of page charges. This article must, therefore, be hereby marked advertisement in accordance with 18 U.S.C. Section 1734 solely to indicate this fact.

Received September 21, 2010; revised February 4, 2011; accepted February 14, 2011; published OnlineFirst March 17, 2011.

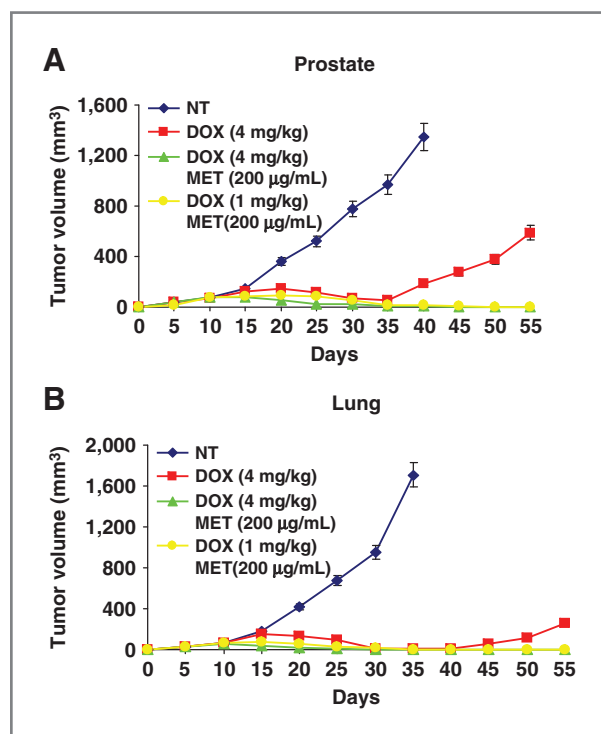


Figure 4. Metformin together with doxorubicin inhibits prostate and lung tumor growth. A, tumor volume (mean \pm SD) in mice injected on day 0 with PC3 prostate cancer cells or (B), A549 lung cancer cells that were untreated (NT), treated by intratumoral injections (days 10, 15, 20, and 25) with 1 or 4 mg/kg doxorubicin (DOX) together with metformin diluted in drinking water (200 μ g/mL).

References

1. Ailles LE, Weissman IL. Cancer stem cells in solid tumors. *Curr Opin Biotechnol* 2007;18:460–6.
2. Polyak K, Weinberg RA. Transitions between epithelial and mesenchymal states: acquisition of malignant and stem cells traits. *Nat Rev Cancer* 2009;9:265–73.
3. Hirsch HA, Iliopoulos D, Tschlis PN, Struhl K. Metformin selectively targets cancer stem cells and acts together with chemotherapy to blocks tumor growth and prolong remission. *Cancer Res* 2009;69:7507–11.
4. Iliopoulos D, Lindahl-Allen M, Polytarchou C, Hirsch HA, Tschlis PN, Struhl K. Loss of miR-200 inhibition of Suz12 leads to polycomb-mediated repression required for the formation and maintenance of cancer stem cells. *Mol Cell* 2010;39:761–72.
5. Drews RE, Shulman LN. Update in hematology and oncology. *Ann Intern Med* 2010;152:655–62.
6. Larsson SC, Mantzoros CS, Wolk A. Diabetes mellitus and risk of breast cancer: a meta-analysis. *Int J Cancer* 2007;121:856–62.
7. Hsu IR, Kim SP, Kabir M, Bergman RN. Metabolic syndrome, hyperinsulinemia, and cancer. *Am J Clin Nutr* 2007;86:867–71.
8. Evans JM, Donnelly LA, Emslie-Smith AM, Alessi DR, Morris AD. Metformin and reduced risk of cancer in diabetic patients. *BMJ* 2005;330:1304–5.
9. Jiralerspong S, Palla SL, Giordano SH, Meric-Bernstam F, Liedtke C, Barnett CM, et al. Metformin and pathologic complete responses to neoadjuvant chemotherapy in diabetic patients with breast cancer. *J Clin Oncol* 2009;27:3297–302.
10. Hirsch HA, Iliopoulos D, Joshi A, Zhang Y, Jaeger SA, Bulyk M, et al. A transcriptional signature and common gene networks link cancer with lipid metabolism and diverse human diseases. *Cancer Cell* 2010;17:348–61.
11. Alimova IN, Liu B, Fan Z, Edgerton SM, Dillon T, Lind SE, et al. Metformin inhibits breast cancer cell growth, colony formation and induces cell cycle arrest in vitro. *Cell Cycle* 2009;8:909–15.
12. Liu B, Fan Z, Edgerton SM, Deng XS, Alimova IN, Lind SE, et al. Metformin induces unique biological and molecular responses in triple negative breast cancer cells. *Cell Cycle* 2009;8:2031–40.
13. Zakikhani M, Dowling R, Fantus IG, Sonenberg N, Pollak M. Metformin is an AMP kinase-dependent growth inhibitor for breast cancer cells. *Cancer Res* 2006;66:10269–73.
14. Anisimov VN, Egormin PA, Piskunova TS, Popovich IG, Tyndyk ML, Yurova MN, et al. Metformin extends life span of HER-2/neu transgenic mice and in combination with melatonin inhibits growth of transplantable tumors in vivo. *Cell Cycle* 2010;9:188–97.
15. Dowling RJ, Zakikhani M, Fantus IG, Pollak M, Sonenberg N. Metformin inhibits mammalian target of rapamycin-dependent translation initiation in breast cancer cells. *Cancer Res* 2007;67:10804–12.
16. Iliopoulos D, Hirsch HA, Struhl K. An epigenetic switch involving NF- κ B, lin 28, let-7 microRNA, and IL6 links inflammation to cell transformation. *Cell* 2009;139:693–706.
17. Shipitsin M, Campbell LL, Argani P, Weremowicz S, Bloushtain-Qimron N, Yao J, et al. Molecular definition of breast tumor heterogeneity. *Cancer Cell* 2007;11:259–73.
18. Shimono Y, Zabala M, Cho RW, Lobo N, Dalerba P, Qian D, et al. Downregulation of miRNA-200c links breast cancer stem cells with normal stem cells. *Cell* 2009;138:592–603.
19. Iliopoulos D, Hirsch HA, Wang G, Struhl K. Inducible formation of breast cancer stem cells and their dynamic equilibrium with non-stem cancer cells via IL6 secretion. *Proc Natl Acad Sci U S A* 2011;108:1397–402.
20. Chang HR, Glaspy J, Allison MA, Kass FC, Elashoff R, Chung DU, et al. Differential response of triple-negative breast cancer to a docetaxel and carboplatin-based neoadjuvant treatment. *Cancer* 2010;116:4227–37.
21. Qi M, Li JF, Xie YT, Lu AP, Lin BY, Ouyang T. Weekly paclitaxel improved pathologic response of primary chemotherapy compared with standard 3 weeks schedule in primary breast cancer. *Breast Cancer Res Treat* 2010;123:197–202.