

Internalization of Exosomes through Receptor-Mediated Endocytosis

Amber Gonda^{1,2}, Janviere Kabagwira^{1,3}, Girish N. Senthil¹, and Nathan R. Wall^{1,3}



Abstract

The tumor microenvironment is replete with factors secreted and internalized by surrounding cells. Exosomes are nano-sized, protein-embedded, membrane-bound vesicles that are released in greater quantities from cancer than normal cells and taken up by a variety of cell types. These vesicles contain proteins and genetic material from the cell of origin and in the case of tumor-derived exosomes, oncoproteins and oncogenes. With increasing understanding of the role exosomes

play in basic biology, a more clear view of the potential exosomes are seen to have in cancer therapeutics emerges. However, certain essential aspects of exosome function, such as the uptake mechanisms, are still unknown. Various methods of cell–exosome interaction have been proposed, but this review focuses on the protein–protein interactions that facilitate receptor-mediated endocytosis, a broadly used mechanism by a variety of cells.

Introduction

Extracellular vesicles (EV) play an integrative role in basic biological processes, such as cell-to-cell communication, but have recently gained widespread attention for their potential role in pathology. Supporting evidence exists for exosome involvement in cardiovascular disease, oncology, autoimmune syndromes, neurodegenerative disorders such as Alzheimer's and Parkinson's diseases, HIV, tuberculosis, and more (1). Extracellular vesicles are classified on the basis of their cellular origin, biological function, size, and most commonly by their biogenesis (2). On the basis of their formative processes, there are three main classes: microvesicles, apoptotic bodies, and exosomes. Microvesicles originate from the plasma membrane as a result of outward budding and fission of membrane vesicles from the cell surface (3). Apoptotic bodies result from the blebbing of the plasma membrane during apoptosis (2). Exosomes, the focus of this article, derive from intracellular inward budding of the limiting membrane of endocytic compartments that form multivesicular bodies (MVB), which release these vesicles in the form of exosomes (4, 5). Exosomes are a type of extracellular spherical shaped membrane-bound vesicle with a diameter size ranging between 30 and 150 nm (6, 7). Studies revealed that exosomes are shed from various kinds of cells and can be isolated from virtually all biological fluids (4, 5). Currently, exosomes are being explored as biomarkers for different cancers and diseases as noninvasive tech-

niques for diagnosis (8, 9). Exosomes elicit various functions in cancer progression such as inducing angiogenesis (10–12), resistance to therapy in their cell of origin by sending the drugs outside these targeted cells (13), and conferring chemoresistance to their target/receiving cells (14). Dendritic cell-derived exosomes (DEX) have been shown to possess an additional function of antigen presentation (15, 16) due to the presence of MHC class II and other immunologically important molecules such as MHC class I, CD80, and CD86 (17). In addition, exosomes are reservoirs for biomarkers such as proteins (6, 8, 9, 18, 19), mRNAs, miRNAs (11, 20–22), lipids (23), and more recently DNA (24, 25). In addition, they play a role in niche preparation for metastasis (26, 27) and immune suppression (28–30). Because of their lipid membrane bilayer, exosomes are endowed with a protective ability for their cargo, and so are thought to play a role in cell-to-cell communication (31, 32). These processes make exosomes excellent candidates for therapeutic targets.

Accessing the vast therapeutic potential of exosomes is dependent on a fuller understanding of the vesicular–cellular protein interactions underlying exosomal function. Targeting exosomes containing protumorigenic messages (33) or modifying their contents and characteristics (34) to hinder the further spread or development of the tumor burden is one of many proposed therapeutic methods. Another promising therapy would be to utilize the biological functions of exosomes to deliver cancer drugs and therapies (2, 35–38). For example, nanoparticle drug delivery is a rapidly burgeoning area of inquiry that capitalizes on the endogenous functions of extracellular particles by applying these to manufactured vesicles (39–41). Each of these potential therapies relies on a clear understanding of exosome internalization by recipient cells.

Several mechanisms of uptake have been proposed for exosomes and are well reviewed in the literature (42–45). Evidence indicates that exosomes can be internalized by way of fusion (46–48) and/or endocytosis (43, 49). Fusion of exosomes with the plasma membrane has been described by several groups. As seen below, it is often cell-type or environment-dependent. Montecalvo and colleagues showed that with dendritic cells,

¹Center for Health Disparities & Molecular Medicine, Loma Linda University School of Medicine, Loma Linda, California. ²Department of Pathology and Anatomy, Loma Linda University School of Medicine, Loma Linda, California. ³Division of Biochemistry, Department of Basic Sciences, Loma Linda University School of Medicine, Loma Linda, California.

Corresponding Author: Nathan R. Wall, Loma Linda University School of Medicine, Mortensen Hall Rm 162, 11085 Campus St, Loma Linda, CA 92350. Phone: 909-558-1000, ext. 81397; Fax: 909-558-0177; E-mail: nwall@llu.edu

doi: 10.1158/1541-7786.MCR-18-0891

©2018 American Association for Cancer Research.

exosomes bind to the plasma membrane, delivering their contents through the fusion or hemi-fusion of the two membranes (47). Platelets have also been identified as structures to which monocyte-derived microvesicles deliver their contents by fusion. Activated platelets fused with the microvesicle membrane more rapidly than unstimulated ones, and reduced platelet activity was observed when annexin V inhibited the fusion process (50).

The conditions to which the recipient cells are subjected can also affect the mechanism of uptake. Membrane fusion requires interacting bilayer destabilization and overcoming high activation energy barriers (51). On the basis of this primary role of lipids in the fusion process (46), the fluidity and rigidity of the membrane caused by changing temperatures may direct the mechanism of internalization. The fusion process causes a "lipid interdigitation" that occurs more readily in the presence of high amounts of fusogenic lipids such as phosphatidic acid and bis(monoacylglycero) phosphate (BMP), both of which are present in exosomes. BMP's fusogenic properties are most potent at a low pH (52, 53). Acidic environments, as found within a tumor or in metastatic sites, as well as increasing temperatures, improve efficiency of exosomal fusion to melanoma cancer cells (46). Whether these conditions dictate fusion of exosomes preferentially over endocytosis remains to be evaluated.

In addition to fusion, various types of endocytosis have been identified as mechanisms of intercellular transport of exosomal contents such as macropinocytosis (54–56), phagocytosis (57), clathrin-mediated (55, 58), caveolin-dependent (59), lipid raft-dependent (60, 61), and clathrin/caveolin-independent (62) endocytosis. While these processes have unique aspects, there is some functional overlap between them. Macropinocytosis is a form of endocytosis that consists of membrane ruffles forming intracellular vesicles to internalize large amounts of extracellular fluid, as seen by several antigen-presenting cells that sample the immediate environment (63). This varies from other forms of endocytosis in its formation of separate and distinct intracellular vesicles (macropinosomes) and the non-specific internalization of materials. Research has identified macropinocytosis of exosomes by microglia (56), human epidermoid carcinoma-derived A431 cells stimulated by EGFR, and by the pancreatic cancer MiaPaCa-2 cell line (54). Macropinocytosis is not selective in which molecules are internalized from the extracellular environment, and so uptake may be dictated simply by proximity to the cells and not targeted by the exosome specifically. However, it has been shown that some exosomes naturally induce macropinocytosis internalization (64) and others, through manipulation of exosomal content, can selectively activate this mechanism increase uptake (40). Phagocytosis is a much more common method of taking up exosomes, especially with phagocytic cells of the immune system. Feng and colleagues showed that two leukemia cell lines, K562 and MT4, solely utilized phagocytosis for exosome internalization (57). Phagocytosis depends on specific receptors and mechanisms that are present primarily in specialized cells. These cells envelope the exosomes in phagosomes, eventually directing the cargo toward the lysosome (65).

Four other general categories of endocytosis focus on specific cellular proteins that facilitate the uptake of particles. Clathrin and caveolin are both cytosolic proteins that form specific pits with which to internalize various substances (66). The exact

reasons why and when a cell uses clathrin, caveolin, or neither, is still incompletely understood but particle size and cell type seem to play a role (60, 67). Caveolin-dependent endocytosis is important in albumin uptake, cholesterol transport, and intracellular signaling. Because of the small size of the caveolae, its endocytosed material tends to be smaller than 60 nm (66). Clathrin-dependent mechanisms, however, can internalize particles up to 120 nm. The size restrictions may indicate, with further investigation into which uptake mechanism is utilized by which cells, a possible functional difference between vesicle sizes within the current exosome size range. The clathrin-dependent process is involved in many different cell types and functions ranging from vesicle recycling in the neuronal synapse to organ development and ion homeostasis (66). Many of the common, well-known endocytosis receptors utilize clathrin-coated pits, such as low-density lipoprotein receptor (LDLR) and transferrin receptor (TfR). One of the most commonly used ways to determine which of these mechanisms is in operation is through inhibitory drugs or knocking down certain key players. Dynamin, a GTPase, facilitates the fission of the intracellular clathrin-coated vesicle (66, 68). Dynasore, an inhibitor of dynamin, has been utilized to effectively block endocytosis of extracellular vesicles and establish clathrin-mediated endocytosis as a mechanism of uptake for these vesicles (43, 56, 58). Following siRNA downregulation of caveolin-1 (the primary protein involved in caveolae-dependent endocytosis), exosome internalization was significantly reduced in B cells (59). Inhibitory drugs have also been useful in the determination of a third mechanism, lipid raft-mediated endocytosis. The lipid raft is a small portion of the plasma membrane-rich in sterols and sphingolipids, which facilitates various cellular processes (69). Use of methyl- β -cyclodextrin (M β CD), which alters the cholesterol content of the membrane and disrupts lipid rafts, has been seen by several groups to impair exosomal internalization (60, 70, 71). While lipid raft-dependent endocytosis is the primary clathrin- and caveolae-independent mechanism, other pathways and independent interactions have been described in the internalization of exosomes (62, 69). Endocytosis is the primary method of exosomal delivery of its contents, but research is still needed to understand what determines the specific mechanism whether it is cell type, exosome type, or condition specific.

Research into internalization mechanisms has shown that experimental manipulation of the exosomal membrane protein profile, such as stripping the membrane, affects the uptake of exosomes (58, 72). On the basis of that understanding, receptor-mediated endocytosis (RME) is another proposed mechanism of uptake. While RME traditionally is associated with clathrin-mediated endocytosis, the receptor/ligand interaction facilitating uptake has also been linked to several other endocytosis categories. Its overall dependence on receptors offers an excellent source of potential targets for therapeutic manipulation. Potential therapies can use these receptors in two ways: receptors can be targets to prevent uptake of oncogenic exosomes, or manufactured drug-containing nanoparticles can be designed with an overexpression of ligands for these specific receptors. While RME is a common mechanism of uptake, identification of the receptors involved particularly with extracellular vesicles is still in progress. The significance of RME is connected to its ability to closely monitor the internalization of extracellular materials. It is dependent upon

a ligand binding to a specific receptor resulting in the engulfment of the bound complex. Ligands are proteins that bind specifically to a receptor to initiate signaling or to influence recipient cell function. Some of the well described receptor–ligand complexes include low-density lipoprotein (LDL) and its receptor (LDLR), or transferrin (Tf) and transferrin receptor (TfR; refs. 73–75). These complexes enter the cell and are either degraded in the lysosome or recycled to the surface. LDL/LDLR complex is endocytosed and ends up in the lysosome, which allows for LDL degradation into free cholesterol for cellular function. TfR, on the other hand, releases its iron cargo in the endosome and then is recycled back to the surface with the Tf and receptor intact. As illustrated here, receptor and ligand fates differ based on the receptor and mechanism of endocytosis (76).

Many proteins have been identified as participants in the endocytosis of exosomes (Table 1). Similar protein–protein interactions significantly contribute to recognition and endocytosis of molecules important for cellular activities pertaining to the uptake of viruses (44, 77, 78), liposomes (79, 80), and nanoparticles (81, 82). One of the many ways viruses induce internalization by the host is through apoptotic mimicry, which involves externally expressing phosphatidylserine that binds to cellular T-cell immunoglobulin mucin (TIM) receptors (78). Liposome uptake by several C-type lectin receptors is enhanced by altering the carbohydrate membrane profile (80). Indicative of the therapeutic potential of this field of research, manufactured nanoparticles have identified certain proteins, such as

apolipoproteins, essential to uptake (82). Many of these proteins have been identified on exosomes, but further research is needed to clarify their role in exosomal uptake (83). Those that have been linked to vesicle internalization are outlined in Table 2 and described below.

Lectins

Lectins are a population of soluble and membrane-bound receptors that recognize and bind glycan moieties (Fig. 1). This large protein family participates in a wide variety of functions that facilitate cell-to-cell communication, including adhesion and intracellular trafficking (84). There are three classes of lectins, the transmembrane C-type lectins and selectins, the transmembrane Siglecs (that bind sialic acid), and the cytosolic galectins (galactoside binding). All three classes have been linked to exosomes, and two have specifically been identified as mediators of exosome uptake. The first class, the selectins, is found on immune cells and endothelial cells and is involved particularly with cell adhesion (84). While the mechanism of uptake has yet to be directly ascribed to the p-selectin CD62, it has been shown on platelet-derived extracellular vesicles (44, 85), and p-selectins are endocytosed with the aid of the cytosolic protein Numb3 (86), allowing for the hypothesis that p-selectins may play a role in exosome uptake. P-selectin on platelets has also been shown to bind to its ligand p-selectin glycoprotein ligand-1 (PSGL-1) on microvesicles; however, this facilitates fusion delivery instead of endocytosis (50). Using antibodies to cellular c-type lectin receptors, as well as calcium

Table 1. Receptor–ligand complexes facilitating exosomal internalization

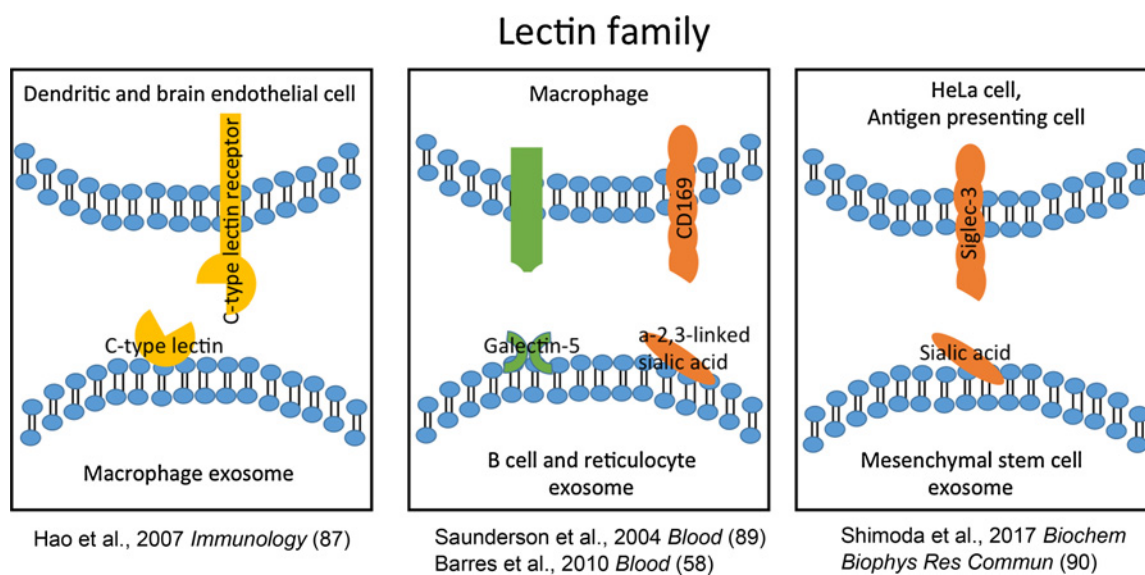
Receptor	Receptor location	Ligand	Ligand location	References
Direct				
C-type lectin receptor	Dendritic cell, brain endothelial cell	C-type lectin	Macrophage exosome (exo)	87, 88
CD169 (Siglec)	Splenic and lymph node macrophages	A2,3-linked sialic acid	B-cell-derived exosomes	89
Siglec-3 (CD33)	Cervical cancer and antigen-presenting cells	Sialic acids	Mesenchymal stem cell-derived exo	90
Cadherin 11	Macrophage	Galectin 5	Reticulocyte derived exo	58
LFA-1	Osteoblast exosomes		Prostate cancer cells	103
	Macrophage exo, dendritic cells	ICAM-1	Brain endothelial cell, dendritic exo	87, 88, 104–107
	Pancreatic adenocarcinoma (rat) exosomes	CD11b	Spleen and lymph node leukocytes	72
	Pancreatic adenocarcinoma (rat) exosomes	CD11c	Spleen and lymph node leukocytes	72
	Pancreatic adenocarcinoma (rat) exosomes	CD44	Spleen and lymph node leukocytes	72
CD106	Endothelial cells	CD49d	Spleen and lymph node leukocytes	72, 112
	Pancreatic adenocarcinoma (rat) exosomes	CD54	Spleen and lymph node leukocytes	72
Integrin $\alpha_6\beta_4$	Lung fibroblasts		Breast cancer exosomes	110
Integrin $\alpha_v\beta_5$	Liver macrophages		Pancreatic exosomes	110
CD62	Platelet exo	CD62L	Spleen cells	72, 85
CD9	Pancreatic adenocarcinoma exo		Spleen, lymph node, peritoneal exudate cells	72
CD81	Pancreatic adenocarcinoma		Spleen, lymph node, peritoneal exudate cells	72
Tspan8	Pancreatic adenocarcinoma exo		Endothelial cell	112, 113
HSPG	Glioblastoma multiforme cells	Fibronectin	Myeloma exosomes	111, 122, 127
TIM1/TIM4	Phagocytic cells and endothelial cells	Phosphatidylserine	Dendritic cell exosome, mouse melanoma cell exosomes, squamous cell carcinoma	54, 97, 128, 129, 132, 134
Indirect				
EGFR	Epidermoid carcinoma cells, pancreatic carcinoma cells	EGF	HeLa cell exosomes	54, 139

Table 2. Protein–protein interactions involved in exosomal uptake

Receptor	Ligand	Receptor location	General function	References
Lectins				
C-type/Selectin	PSGL-1	Immune, endothelial cells, platelet-derived EVs	Cell adhesion, inflammation	50, 84, 87, 88
Siglecs	α -2,3-linked sialic acid	Leukocytes, stromal cells	Cell adhesion, signaling	89, 90
Galectins	Glycans	Nasopharyngeal carcinoma EV, dendritic EV, reticulocyte EV	Cell adhesion, signaling	58, 91, 92, 95, 96
Adhesion molecules				
Cadherins	Cadherins	Epithelium, placenta, neural, muscle, kidney	Cell adhesion	99, 103
Selectins	PSGL-1	Immune, endothelial, platelet derived EV	Cell adhesion, inflammation	44, 50, 84–86
Mucins	Galectin3	Epithelial	Cell signaling, maintain barriers	99–102
Integrins	Fibronectin, collagen, laminin	Ubiquitous	Intracellular signaling, cell adhesion, migration	72, 98, 109–111
Immunoglobulin (Ig)(ICAM-1)	Various	Immune cells, phagocytic cells, endothelial cells, platelets	Facilitate immune response	87, 88, 97, 104–107
HSPG	Fibronectin	Ubiquitous	Endocytosis, adhesion, migration, growth factor, binding, coreceptor	44, 111, 114–127
TIM family	Phosphatidylserine (PS)	T cells, dendritic cells, B cells, mast cells, NK cells, some endothelial cells	Regulate immune responses, phagocytosis, antigen presentation, recognize apoptotic cells	57, 97, 128–136
EGFR	EGF and TGF α	Ubiquitous	Intracellular signaling leading to DNA synthesis, cell proliferation, adhesion, and migration	54, 133, 137, 139

chelators and a panel of carbohydrates, two groups have identified these receptors as integral in the uptake of dendritic cell–derived and macrophage-derived exosomes (Fig. 1; refs. 87, 88). The interaction of the selectins and c-type lectins with exosomes seems to be an emerging area of research into the

intercellular communication that enhances immune cell–antigen recognition and movement. Further studies with these receptors in exosomal uptake could advance the field in increasing immune cell involvement in cancer and immunotherapy methods.

**Figure 1.**

Lectin family members have been shown to play a role in exosome internalization. Lectin family members have been identified on various cellular membranes as well as on exosomal membranes. C-type lectin receptor has been identified on both dendritic cells and brain endothelial cells and interacts with c-type lectin to internalize macrophage-derived exosomes (87). Galectin 5 on reticulocytes is involved in uptake by macrophages (58). Siglecs, another lectin subcategory of proteins, are seen responding to exosomes with the interaction of CD169 on macrophages and B-cell exosomal α -2,3-linked sialic acid (89) and Siglec-3 on HeLa cells or APCs and sialic acid on stem cell–derived exosomes (90).

Saunderson and colleagues described the dependence of B-cell and dendritic cell-derived exosome internalization on CD169, a transmembrane Siglec family member expressed on leukocytes and stromal cells. Alpha 2,3-linked sialic acid is the primary ligand for CD169 and it has been found to be enriched on B-cell-derived exosomes (Fig. 1; ref. 89). Siglecs are sialic acid-binding immunoglobulin-like lectins that are cell-type specific and primarily function in cell adhesion and signaling (84). Siglec-3 (CD33) on HeLa cells and antigen-presenting cells has also been shown to mediate the uptake of exosomes, as antibody blocking and competition with sialic acid decrease uptake of adipose-derived stem cell exosomes (Fig. 1; ref. 90). This second class of lectins has been described most frequently in cell-to-cell interactions in the immune system, but as seen above, functions in vesicular endocytosis as well.

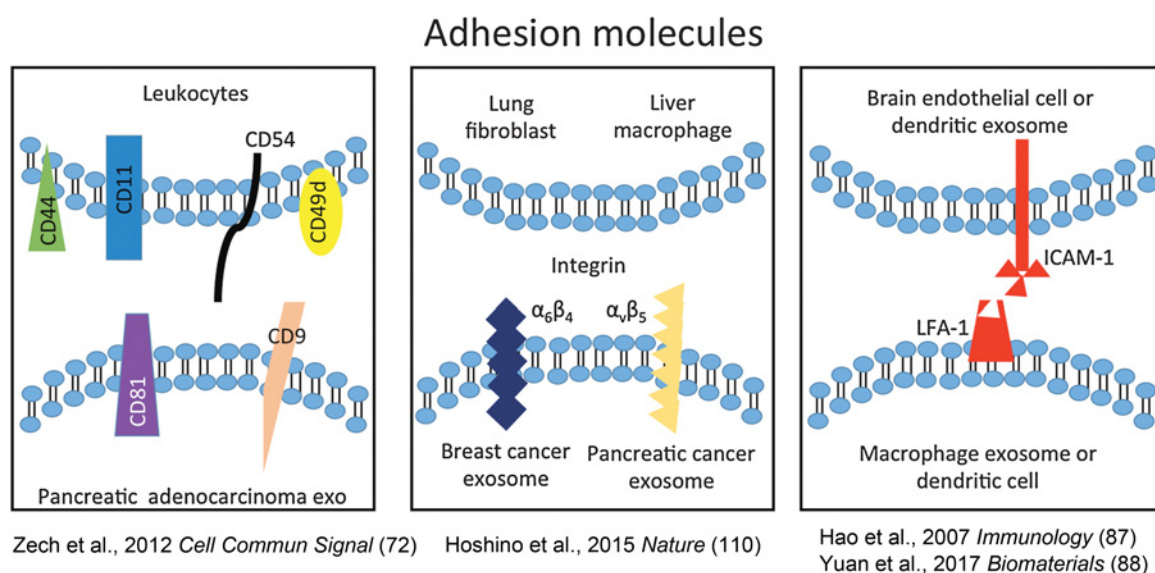
A third class, the cytosolic galectins, is responsible for interpreting the results of glycosylation into changes in function, and so participates in a variety of cellular pathways. Galectins are small proteins that bind to galactose- and N-acetyllactosamine-based motifs and are widely conserved across species. These proteins have the unique ability to slow receptor internalization by dimerization and cross-linking (84). Galectins are now being targeted by chemotherapeutics due to the prevalence of their mutations in cancer cells (91). In addition, they have been linked to exosome uptake by target cells. Several galectins have been identified on exosomes, such as galectin-9 on exosomes from nasopharyngeal carcinoma cells and others (58, 92), and galectin-3 on dendritic cell-derived exosomes (93). Galectin-9 interacts with T-cell transmembrane, immunoglobulin, and mucin 1 (TIM1), a membrane receptor that plays a key role in exosomal uptake with phosphatidylserine (PS), as commonly seen with phagocytic cells (94). While galectin-3 has yet to be shown to influence exosome uptake, its adhesion properties have been established in relation to neural growth and is a required receptor for clathrin-independent internalization of CD44, an important surface glycoprotein for cell adhesion and migration (44, 95, 96). Barrès and colleagues showed how internalization of exosomes derived from reticulocytes is influenced by the presence and concentration of galectin-5 (Fig. 1; ref. 58). In this study, a membrane dye, PKH67, was used to show internalization of exosomes containing surface galectin-5. In the presence of unstained exosomes or purified protein, however, uptake was decreased. Endocytosis, especially as mediated by receptors, is dependent on the recipient cell's ability to interact with the extracellular environment. Receptors, like the lectins, designed to directly bind a variety of proteins are ideal for the internalization of extracellular vesicles that may present various surface ligands. In addition, the high incidence of some lectins in malignant tissues also increases the importance this receptor family plays in the interaction of cancer-spreading exosomes and the tumor microenvironment. Targeting these proteins by either an antagonist drug or a competitive nanoparticle could reduce the available receptors, decreasing the cellular uptake of oncoprotein-containing exosomes. The Zöller laboratory has proposed the idea of creating nanoparticles that can "outsmart" or outcompete endogenous exosomes (34), which would be able to effectively utilize such ubiquitous receptors as targets.

Adhesion molecules

Because of their role in cell-to-cell and cell-to-extracellular environment interactions, adhesion molecules are in a prime

position to play an integral role in receptor-mediated endocytosis of exosomes. Cell adhesion molecules (CAM) consist of five classes including cadherins, immunoglobulins, selectins (also part of the lectin family), mucins, and integrins. Calcium dependence and specific interactions with cells and extracellular matrix are some of the main differences between the various classes (97). Several different adhesion molecules have been identified on exosomes such as intercellular adhesion molecule-1 (ICAM-1), CD11 integrins, milk fat globule-EGF factor 8 (MFG-E8) (98), epithelial cell adhesion molecule (Epcam), mucin13 (99), and mucin-1 (muc-1; refs. 100–102), which could potentially be tied to uptake mechanisms by recipient cells. When pretreated with an antibody to cadherin-11, exosomes from osteoblasts are less likely to be taken up by prostate cancer cells (103). The immunoglobulin ICAM-1 and its receptor, leukocyte function-associated antigen-1 (LFA-1), function primarily in the interaction between leukocytes and endothelial cells. Abnormal expression is linked to several pathologies, including cancer (104). ICAM-1 and LFA-1 play an important role in dendritic cell-derived exosome function as well as facilitate uptake of macrophage exosomes in the brain (Fig. 2; refs. 87, 88, 105, 106). Engineered nanovesicles have also shown that ICAM-1 and LFA-1 are crucial players in uptake by human umbilical vein endothelial cells (HUVEC; ref. 107). While many of these adhesion molecules have not yet been directly linked to internalization mechanisms, the significance of this receptor family is illustrated in a 2006 study done by Miksa and colleagues. They found that in sepsis, deficient phagocytosis of apoptotic bodies is tied to decreased MFG-E8, but when exosomes containing this protein are introduced, phagocytosis increases and sepsis is attenuated (108). This finding illustrates the significance of increasing the understanding of exosomal uptake mechanisms for the development or manipulation of vesicles as therapeutics.

The integrin protein profile that has been linked to exosomes is generally involved in the interactions between extracellular material and fibroblasts, as well as in initiating intracellular signaling (109). However, unique integrin profiles have been linked to targeted cells for the uptake of specific exosomes. Many of these studies show that integrin receptors are located on the exosome and interact with ligands on the targeted cell (Fig. 2; ref. 110). For example, integrin $\alpha_6\beta_4$ on breast cancer exosomes and integrin $\alpha_v\beta_5$ on pancreatic cancer exosomes showed an essential role in the uptake of exosomes by lung fibroblasts and liver macrophages, respectively. These both indicate an integral role exosomes can play in the development of lung and liver metastasis (110). Chen and colleagues, has shown that integrins $\alpha_v\beta_3$ and $\alpha_5\beta_1$ play a key role in exosome attachment to hepatic stellate cells furthering liver fibrosis development. This group showed delivery of miRNAs after attachment, indicating that these receptors play a role in delivery of exosomal contents, but whether by fusion or endocytosis is still undetermined (111). Furthermore, rat pancreatic adenocarcinoma-derived exosomes were shown, through antibody blocking and flow cytometry analysis, to be taken up by leukocytes in a CD11b (spleen and peritoneal exudate cells), CD11c (spleen and lymph node cells), CD44 (spleen and lymph node cells), CD49d (lymph node cells), CD54 (spleen, lymph node, and peritoneal exudate cells), and CD62L (spleen and lymph node cells) dependent manner. As assessed by

**Figure 2.**

Cellular adhesion molecules play an important role in anchoring and internalizing exosomes. Various leukocytes are involved in the exosome interactions and CD44, CD11, CD54, CD49d, are all important to internalization. Tetraspanins CD81 and CD9 on the exosome surface facilitate this interaction (72). Integrins are important facilitators of cell-to-cell interaction and have been identified with exosome uptake in lung fibroblasts and liver macrophages (110). ICAM-1 and its ligand LFA-1 are widely used receptors to internalize exosomes (87, 88).

antibody blockade, the availability of these ligands on various leukocytes dictated the degree of internalization. Subsequent blocking of common exosomal tetraspanins such as CD81 and CD9 on the exosome inhibited uptake by each of the groups (peritoneal exudate cells were only CD81 dependent; Fig. 2; ref. 72). Other groups have provided evidence that supports the role of additional tetraspanins in exosomal integration into target cells, such as tetraspanin 8 (Tspan8; refs. 112, 113). Exosomal proteins therefore are equally responsible for the endocytosis process as are those found on the cell membrane (Fig. 2).

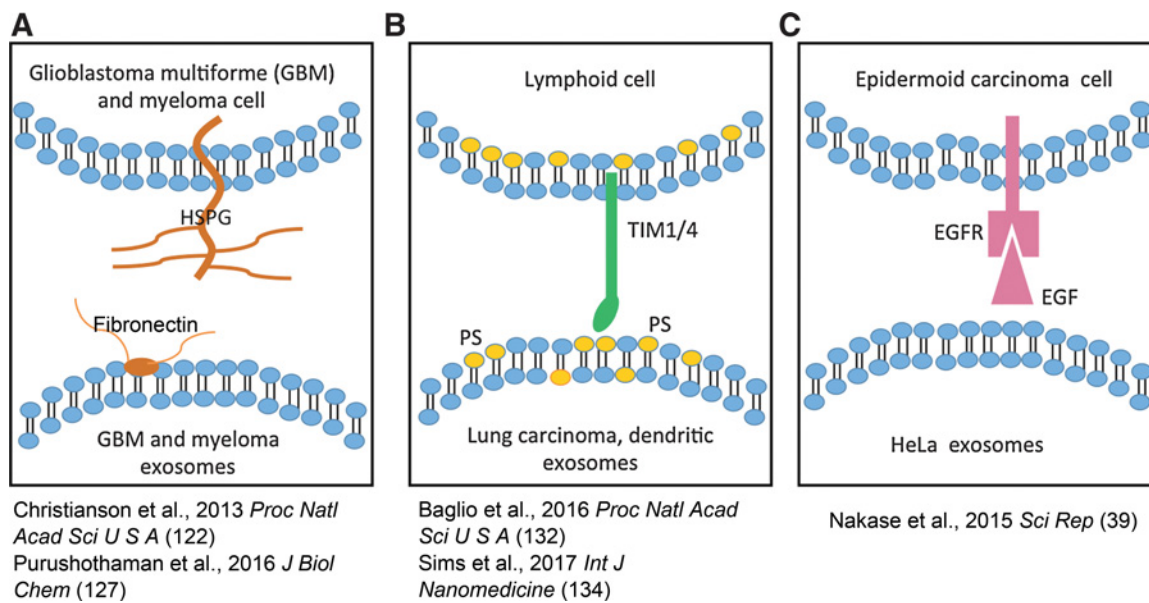
Heparan sulfate proteoglycans

Heparan sulfate proteoglycans (HSPG) are ubiquitous glycoproteins involved in a wide variety of cellular functions. These proteoglycans are promiscuous receptors, binding a variety of ligands through their heparan sulfate (HS) chains (114). Of seven major functions ascribed to these glycoproteins by Sarrazin and colleagues, two can be directly tied to extracellular vesicles and their interaction with cells. First, they facilitate extracellular interactions, including attachment and motility. This function of HSPGs has been tied to exosomal binding and content delivery to hepatic stellate cells (111). Second, they play an integral role in endocytosis for delivery of ligands. Because the HS chains can bind different proteins, several ligands capitalize on the endocytosis function of the HSPGs and enter the cell attached to this receptor. Mahley and colleagues, described the HSPG as a "co-endocytosis receptor," which internalized structures by transferring ligands to other receptors or by forming a complex that takes the ligand into the cell. However, they also show that it can act as an independent receptor in ligand uptake (115). Work by Wittrup and colleagues, describes the endocytosis of HSPG along with its ligand heparan sulfate, establishing it as a receptor/ligand complex that can internalize and not simply bind to exosomes (116).

Further support of the potential endocytic function of HSPG with exosomes is illustrated generally in cells by its well-established promiscuity in ligand binding (117–120) as well as variability in endocytic mechanism (117, 121). Christiansen and colleagues, has connected this receptor to exosome function by showing the dependency of U-87 MG (glioblastoma multiforme cell line) exosomal uptake on HSPG (Fig. 3A). Both syndecans and glypicans, members of the HSPG family have been identified on exosomes, but neither participate in internalization (122). Syndecans are involved instead in the biogenesis of exosomes (123). Location of HSPG, therefore, is important to its influence on exosomes. Cellular HSPG, and not exosomal HSPG, is operative in internalization, but blocking the cellular HSPG does not completely abolish uptake indicating it is not the only functioning mechanism (122). This phenomenon is supported by the Mulcahy review illustrating the various entry mechanisms exosomes utilize (43). Heparin, a drug that interacts with HSPG internalization, is effective at reducing exosomal uptake (124, 125) and has been specifically shown to be effective on the recipient cell rather than the exosome itself (126). In addition, the existence of possible ligands, such as fibronectin, on the exosome surface that interact with the HSPGs supports the role for HSPG-dependent exosome internalization (127). Furthermore, evidence shows that many viruses, such as HIV, hijack the HSPG endocytosis pathway, supporting the hypothesis that this mechanism may also be occurring with extracellular vesicles that are similar in size to viruses such as exosomes (44, 114). While there is still a paucity of evidence of HSPG directly internalizing exosomes, as seen above, the understanding of it as an endocytic receptor and its presence in relation to exosomes is becoming clearer.

T-cell immunoglobulin and mucins

Endocytosis of debris and apoptotic cells is an important part of cellular homeostasis and is performed by phagocytic

**Figure 3.**

Other receptor-ligand interactions are important to exosome-cellular interactions. **A**, Heparan sulfate proteoglycans bind to fibronectin on exosomes from different cell types to facilitate uptake (122, 127). **B**, Externally facing PS allows exosomes to be recognized and internalized by antigen-presenting cells and phagocytes, often by way of TIM receptors (132, 134). **C**, Cellular EGFR when binding its ligand indirectly increases exosome internalization (39).

cells. One of the key signals that identify an apoptotic body from a healthy cell/vesicle is the presence of PS on the extracellular side of the plasma membrane. This lipid, which is usually facing the cytoplasm, is recognized by various receptors on phagocytes and immune cells, some of which belong to the TIM family (128). The reversed PS is a shared characteristic with extracellular vesicles, especially exosomes, and was correlated with exosomal uptake by Morelli and colleagues in 2004 (98). In 2007, Miyanishi and colleagues proposed that TIM1 and TIM4 are the cell receptors responsible for uptake through binding exosomal PS (Fig. 3B; ref. 129). Matsumoto and colleagues explained that the negative surface charge created by external PS facilitates uptake by macrophages (130). This receptor/ligand complex seems to predominate in phagocytic cells (57, 128, 130–132) and may not be a common endocytic process for all cells to internalize exosomes. However, there is evidence of exosome uptake by endothelial cells being reduced by the blocking of PS with Annexin V (133). Furthermore, recent evidence suggests that the TIM4-PS complex plays an essential role in exosome-mediated uptake of HIV-1 and other viruses (78, 134). As mentioned in a previous paragraph, the TIM family has additional members that bind to ligands found on exosomes, such as TIM1 or TIM3 with galectin 9 (94, 135). Overall the TIM family plays an important immunologic role recognizing and internalizing phosphatidylserine, which is most often indicative of cell death and debris. Blocking TIM4 decreases apoptotic body clearance (128, 129) and absence of this receptor can result in altered immune cell function, including development of autoimmunity and hypersensitive lymphocytes (136). Mimicking the apoptotic body with surface PS, exosomes are able to exploit this mechanism and introduce their unique contents to immune cells. Altered immune cell function after exposure to tumor-derived exosomes (29) may

play a role in a tumor's ability to evade immune detection or response, or can alternatively enhance the immune response (16) opening targets for future therapeutics.

While the above receptors illustrate receptor-ligand binding that result in direct endocytosis of exosomes, there are additional receptor/ligand interactions that indirectly result in the internalization of exosomes. Macropinocytosis and phagocytosis nonspecifically envelop extracellular material, which results in exosome uptake (54). The following receptors play a role in the indirect internalization of these vesicles.

EGFR is an important player in several intracellular signaling pathways and mutations of this receptor are common in many cancers (137). Nakase and colleagues found that in the presence of increased EGF, exosomal uptake is enhanced; however, it is done so indirectly (Fig. 3C). EGFR/EGF binding stimulates micropinocytosis, which corresponded with increased amounts of exosomes internalized by Mia PaCa-2 pancreatic adenocarcinoma cells (54). While this group showed an indirect role the EGF/EGFR complex plays in enhancing macropinocytic uptake of exosomes, both EGFR and EGF have been identified on exosomal surfaces, indicating a potential direct role (138). Kooijmans and colleagues also showed that cellular EGFR can be utilized by exosomes for uptake when they incorporated glycosylphosphatidylinositol (GPI)-anchored EGFR nanobodies on vesicles. However, they noted that sufficient binding to cause receptor clustering was required for EGFR internalization (139). Receptor clustering and the dependence of receptor internalization on this process have also been described with other receptors such as TR (77, 140). Nakase and colleagues also describe a similar indirect receptor-mediated endocytosis with chemokine receptor CXCR₄ and stromal cell-derived factor 1 α (SDF-1 α ; ref. 54). This receptor has been identified on exosomes from platelets

Table 3. Exosome-identified ligands/receptors

Receptor	Ligand	Extracellular vesicle origin	References
MFG-E8	Phosphatidylserine and/or $\alpha_v\beta_3/5$	Dendritic cells	98, 108
EpCam	Unknown	Colon carcinoma cells	99
Unknown	Mucin13	Colon carcinoma cells	99
Muc-1	Galectin3	Epithelial cells, breast cancer cells, pancreatic ductal adenocarcinoma cells	107-109
Integrins $\alpha_v\beta_3$ and $\alpha_5\beta_1$	Unknown	Hepatic stellate cells	110
CXCR ₄	SDF-1 α	Platelets and T cells	54, 141, 142
TNFR1, TNFR2	Unknown	Dendritic cell	143
TfR1, TfR2	Transferrin	Leukemia and hepatoblastoma cells	73, 74
LDLR	LDL	Prostate cancer, colon cancer, ovarian cancer, hepatocellular cancer	138, 144-146

and T cells (141, 142). These complexes show the importance of the receptor/ligand complex not only in direct endocytosis of the exosome as a ligand, but as an indirect recipient of macropinocytosis (54, 56).

In addition to the detailed receptor/ligand complexes, other receptor-mediated endocytosis ligands and receptors have been separately identified, but still need to be evaluated for their role in exosomal uptake (Table 3). Obregon and colleagues, has identified the presence of both TNFR 1 and 2 in exosomes derived from dendritic cells (143). Other common endocytosis receptors such as TfR (73, 74) and LDLR (138, 144-146) have also been identified on exosomes from various cell lines and may play a role in their internalization.

Conclusion

The current understanding in the field of extracellular uptake remains an unfinished puzzle. Many different mechanisms of

uptake have been identified and important proteins have been linked to internalization, but the understanding of which mechanism works, when, and with which cells is still unclear. It appears that exosomes may utilize several different mechanisms of uptake in the same cell and at different times. In addition, more research needs to be conducted on how the mechanism of uptake affects the phenotypic changes undergone by the recipient cell. But whether it is cell-cycle-dependent, cell type, or simple opportunistic mechanisms of the extracellular vesicles, the understanding of how this internalization occurs is yet to be determined.

Disclosure of Potential Conflicts of Interest

No potential conflicts of interest were disclosed.

Received August 23, 2018; revised September 28, 2018; accepted November 16, 2018; published first November 28, 2018.

References

- DeToro J, Herschlik L, Waldner C, Mongini C. Emerging roles of exosomes in normal and pathological conditions: new insights for diagnosis and therapeutic applications. *Front Immunol* 2015;6:203.
- EL Andaloussi S, Mager I, Breakefield XO, Wood MJ. Extracellular vesicles: biology and emerging therapeutic opportunities. *Nat Rev Drug Discov* 2013;12:347-57.
- Muralidharan-Chari V, Clancy JW, Sedgwick A, D'Souza-Schorey C. Microvesicles: mediators of extracellular communication during cancer progression. *J Cell Sci* 2010;123:1603-11.
- They C, Amigorena S, Raposo G, Clayton A. Isolation and characterization of exosomes from cell culture supernatants and biological fluids. *Curr Protoc Cell Biol* 2006;Chapter 3:Unit 3.22.
- Raposo G, Stoorvogel W. Extracellular vesicles: exosomes, microvesicles, and friends. *J Cell Biol* 2013;200:373-83.
- Khan S, Jutzy JM, Aspe JR, McGregor DW, Neidigh JW, Wall NR. Survivin is released from cancer cells via exosomes. *Apoptosis* 2011;16:1-12.
- Valadi H, Ekstrom K, Bossios A, Sjostrand M, Lee JJ, Lotvall JO. Exosome-mediated transfer of mRNAs and microRNAs is a novel mechanism of genetic exchange between cells. *Nat Cell Biol* 2007;9:654-9.
- Khan S, Jutzy JM, Valenzuela MM, Turay D, Aspe JR, Ashok A, et al. Plasma-derived exosomal survivin, a plausible biomarker for early detection of prostate cancer. *PLoS One* 2012;7:e46737.
- Khan S, Bennit HF, Turay D, Perez M, Mirshahidi S, Yuan Y, et al. Early diagnostic value of survivin and its alternative splice variants in breast cancer. *BMC Cancer* 2014;14:176.
- van Balkom BW, de Jong OG, Smits M, Brummelman J, den Ouden K, de Bree PM, et al. Endothelial cells require miR-214 to secrete exosomes that suppress senescence and induce angiogenesis in human and mouse endothelial cells. *Blood* 2013;121:3997-4006.
- Umez T, Tadokoro H, Azuma K, Yoshizawa S, Ohyashiki K, Ohyashiki JH. Exosomal miR-135b shed from hypoxic multiple myeloma cells enhances angiogenesis by targeting factor-inhibiting HIF-1. *Blood* 2014;124:3748-57.
- Park JE, Tan HS, Datta A, Lai RC, Zhang H, Meng W, et al. Hypoxic tumor cell modulates its microenvironment to enhance angiogenic and metastatic potential by secretion of proteins and exosomes. *Mol Cell Proteom* 2010;9:1085-99.
- Safaei R, Larson BJ, Cheng TC, Gibson MA, Otani S, Naerdemann W, et al. Abnormal lysosomal trafficking and enhanced exosomal export of cisplatin in drug-resistant human ovarian carcinoma cells. *Mol Cancer Ther* 2005;4:1595-604.
- Hu Y, Yan C, Mu L, Huang K, Li X, Tao D, et al. Fibroblast-derived exosomes contribute to chemoresistance through priming cancer stem cells in colorectal cancer. *PLoS One* 2015;10:e0125625.
- Bastos-Amador P, Perez-Cabezas B, Izquierdo-Useros N, Puertas MC, Martinez-Picado J, Pujol-Borrell R, et al. Capture of cell-derived microvesicles (exosomes and apoptotic bodies) by human plasmacytoid dendritic cells. *J Leukoc Biol* 2012;91:751-8.
- Greening DW, Gopal SK, Xu R, Simpson RJ, Chen W. Exosomes and their roles in immune regulation and cancer. *Semin Cell Dev Biol* 2015;40:72-81.
- Clayton A, Court J, Navabi H, Adams M, Mason MD, Hobot JA, et al. Analysis of antigen presenting cell derived exosomes, based on immunomagnetic isolation and flow cytometry. *J Immunol Methods* 2001;247:163-74.
- Melo SA, Luecke LB, Kahlert C, Fernandez AF, Gammon ST, Kaye J, et al. Glypican-1 identifies cancer exosomes and detects early pancreatic cancer. *Nature* 2015;523:177-82.
- Valenzuela MM, Ferguson Bennit HR, Gonda A, Diaz Osterman CJ, Hibma A, Khan S, et al. Exosomes secreted from human cancer cell lines contain inhibitors of apoptosis (IAP). *Cancer Microenviron* 2015;8:65-73.

20. Singh R, Pochampally R, Watabe K, Lu Z, Mo YY. Exosome-mediated transfer of miR-10b promotes cell invasion in breast cancer. *Mol Cancer* 2014;13:256.
21. Kobayashi M, Salomon C, Tapia J, Illanes SE, Mitchell MD, Rice GE. Ovarian cancer cell invasiveness is associated with discordant exosomal sequestration of Let-7 miRNA and miR-200. *J Translat Med* 2014;12:4.
22. Alexander M, Hu R, Runtz MC, Kagele DA, Mosbrugger TL, Tolmacheva T, et al. Exosome-delivered microRNAs modulate the inflammatory response to endotoxin. *Nat Commun* 2015;6:7321.
23. Skotland T, Sandvig K, Llorente A. Lipids in exosomes: Current knowledge and the way forward. *Prog Lipid Res* 2017;66:30–41.
24. Kalluri R, LeBleu VS. Discovery of double-stranded genomic DNA in circulating exosomes. *Cold Spring Harb Symp Quant Biol* 2016;81:275–80.
25. Thakur BK, Zhang H, Becker A, Matei I, Huang Y, Costa-Silva B, et al. Double-stranded DNA in exosomes: a novel biomarker in cancer detection. *Cell Res* 2014;24:766–9.
26. Costa-Silva B, Aiello NM, Ocean AJ, Singh S, Zhang H, Thakur BK, et al. Pancreatic cancer exosomes initiate pre-metastatic niche formation in the liver. *Nat Cell Biol* 2015;17:816–26.
27. Ray K. Pancreatic cancer: pancreatic cancer exosomes prime the liver for metastasis. *Nat Rev Gastroenterol Hepatol* 2015;12:371.
28. Whiteside TL. Immune modulation of T-cell and NK (natural killer) cell activities by TEXs (tumour-derived exosomes). *Biochem Soc Trans* 2013;41:245–51.
29. Whiteside TL. Exosomes and tumor-mediated immune suppression. *J Clin Invest* 2016;126:1216–23.
30. Okoye IS, Coomes SM, Pelly VS, Czieso S, Papayannopoulos V, Tolmacheva T, et al. MicroRNA-containing T-regulatory-cell-derived exosomes suppress pathogenic T helper 1 cells. *Immunity* 2014;41:89–103.
31. Atay S, Godwin AK. Tumor-derived exosomes: a message delivery system for tumor progression. *Commun Integrat Biol* 2014;7:e28231.
32. Kharaziha P, Ceder S, Li Q, Panaretakis T. Tumor cell-derived exosomes: a message in a bottle. *Biochim Biophys Acta* 2012;1826:103–11.
33. Marleau AM, Chen CS, Joyce JA, Tullis RH. Exosome removal as a therapeutic adjuvant in cancer. *J Translat Med* 2012;10:134.
34. Thuma F, Zoller M. Outsmart tumor exosomes to steal the cancer initiating cell its niche. *Semin Cancer Biol* 2014;28:39–50.
35. Hall J, Prabhakar S, Balaj L, Lai CP, Cerione RA, Breakefield XO. Delivery of therapeutic proteins via extracellular vesicles: review and potential treatments for Parkinson's disease, glioma, and schwannoma. *Cell Mol Neurobiol* 2016;36:417–27.
36. Yu DD, Wu Y, Shen HY, Lv MM, Chen WX, Zhang XH, et al. Exosomes in development, metastasis and drug resistance of breast cancer. *Cancer Sci* 2015;106:959–64.
37. Yousefpour P, Chilkoti A. Co-opting biology to deliver drugs. *Biotechnol Bioeng* 2014;111:1699–716.
38. Saari H, Lazaro-Ibanez E, Viitala T, Vuorimaa-Laukkanen E, Siljander P, Yliperttula M. Microvesicle- and exosome-mediated drug delivery enhances the cytotoxicity of Paclitaxel in autologous prostate cancer cells. *J Control Release* 2015;220:727–37.
39. Nakase I, Futaki S. Combined treatment with a pH-sensitive fusogenic peptide and cationic lipids achieves enhanced cytosolic delivery of exosomes. *Sci Rep* 2015;5:10112.
40. Nakase I, Noguchi K, Fujii I, Futaki S. Vectorization of biomacromolecules into cells using extracellular vesicles with enhanced internalization induced by macropinocytosis. *Sci Rep* 2016;6:34937.
41. Yang Z, Xie J, Zhu J, Kang C, Chiang C, Wang X, et al. Functional exosome-mimic for delivery of siRNA to cancer: in vitro and in vivo evaluation. *J Control Release* 2016;243:160–71.
42. Christianson HC, Svensson KJ, Belting M. Exosome and microvesicle mediated gene transfer in mammalian cells. *Semin Cancer Biol* 2014;28:31–8.
43. Mulcahy LA, Pink RC, Carter DR. Routes and mechanisms of extracellular vesicle uptake. *J Extracell Vesicles* 2014;310:3402.
44. van Dongen HM, Masoumi N, Witwer KW, Pegtel DM. Extracellular vesicles exploit viral entry routes for cargo delivery. *Microbiol Mol Biol Rev* 2016;80:369–86.
45. Villarroya-Beltri C, Baixauli F, Gutiérrez-Vázquez C, Sánchez-Madrid F, Mittelbrunn M. Sorting it out: regulation of exosome loading. *Semin Cancer Biol* 2014;28:3–13.
46. Parolini I, Federici C, Raggi C, Lugini L, Palleschi S, De Milito A, et al. Microenvironmental pH is a key factor for exosome traffic in tumor cells. *J Biol Chem* 2009;284:34211–22.
47. Montecalvo A, Larregina AT, Shufesky WJ, Stolz DB, Sullivan ML, Karlsson JM, et al. Mechanism of transfer of functional microRNAs between mouse dendritic cells via exosomes. *Blood* 2012;119:756–66.
48. Aryani A, Denecke B. Exosomes as a nanodelivery system: a key to the future of neuromedicine? *Mol Neurobiol* 2016;53:818–34.
49. Chivet M, Javalet C, Laulagnier K, Blot B, Hemming FJ, Sadoul R. Exosomes secreted by cortical neurons upon glutamatergic synapse activation specifically interact with neurons. *J Extracell Vesicles* 2014;3:24722.
50. Del Conde I, Shrimpton CN, Thiagarajan P, Lopez JA. Tissue-factor-bearing microvesicles arise from lipid rafts and fuse with activated platelets to initiate coagulation. *Blood* 2005;106:1604–11.
51. Alberts B, Johnson A, Lewis J, Raff M, Roberts K, Walter P. *Molecular biology of the cell*. New York, NY: Garland Science; 2002. p. 1392.
52. Record M, Carayon K, Poirot M, Silvente-Poirot S. Exosomes as new vesicular lipid transporters involved in cell–cell communication and various pathophysiological. *Biochim Biophys Acta* 2014;1841:108–20.
53. Record M. Intercellular communication by exosomes in placenta: a possible role in cell fusion? *Placenta* 2014;35:297–302.
54. Nakase I, Kobayashi NB, Takatani-Nakase T, Yoshida T. Active macropinocytosis induction by stimulation of epidermal growth factor receptor and oncogenic Ras expression potentiates cellular uptake efficacy of exosomes. *Sci Rep* 2015;5:10300.
55. Tian T, Zhu YL, Zhou YY, Liang GF, Wang YY, Hu FH, et al. Exosome uptake through clathrin-mediated endocytosis and macropinocytosis and mediating miR-21 delivery. *J Biol Chem* 2014;289:22258–67.
56. Fitzner D, Schnaars M, van Rossum D, Krishnamoorthy G, Dibaj P, Bakhti M, et al. Selective transfer of exosomes from oligodendrocytes to microglia by macropinocytosis. *J Cell Sci* 2011;124:447–58.
57. Feng D, Zhao WL, Ye YY, Bai XC, Liu RQ, Chang LF, et al. Cellular internalization of exosomes occurs through phagocytosis. *Traffic* 2010;11:675–87.
58. Barres C, Blanc L, Bette-Bobillo P, Andre S, Mamoun R, Gabius HJ, et al. Galectin-5 is bound onto the surface of rat reticulocyte exosomes and modulates vesicle uptake by macrophages. *Blood* 2010;115:696–705.
59. Nanbo A, Kawanishi E, Yoshida R, Yoshiyama H. Exosomes derived from Epstein-Barr virus-infected cells are internalized via caveola-dependent endocytosis and promote phenotypic modulation in target cells. *J Virol* 2013;87:10334–47.
60. Svensson KJ, Christianson HC, Wittrup A, Bourseau-Guilmain E, Lindqvist E, Svensson LM, et al. Exosome uptake depends on ERK1/2-heat shock protein 27 signaling and lipid Raft-mediated endocytosis negatively regulated by caveolin-1. *J Biol Chem* 2013;288:17713–24.
61. Plebanek MP, Mutharasan RK, Volpert O, Matov A, Gatlin JC, Thaxton CS. Nanoparticle targeting and cholesterol flux through scavenger receptor type B-1 inhibits cellular exosome uptake. *Sci Rep* 2015;5:15724.
62. Hazan-Halevy I, Rosenblum D, Weinstein S, Bairey O, Raanani P, Peer D. Cell-specific uptake of mantle cell lymphoma-derived exosomes by malignant and non-malignant B-lymphocytes. *Cancer Lett* 2015;364:59–69.
63. Lim JP, Gleeson PA. Macropinocytosis: an endocytic pathway for internalising large gulps. *Immunol Cell Biol* 2011;89:836–43.
64. Costa Verdera H, Gitz-Francois JJ, Schiffelers RM, Vader P. Cellular uptake of extracellular vesicles is mediated by clathrin-independent endocytosis and macropinocytosis. *J Control Rel* 2017;266:100–8.
65. Gordon S. Phagocytosis: an immunobiological process. *Immunity* 2016;44:463–75.
66. Conner SD, Schmid SL. Regulated portals of entry into the cell. *Nature* 2003;422:37–44.
67. Fruhbeis C, Frohlich D, Kuo WP, Amphornrat J, Thilemann S, Saab AS, et al. Neurotransmitter-triggered transfer of exosomes mediates oligodendrocyte-neuron communication. *PLoS Biol* 2013;11:e1001604.
68. Lanzetti L, Di Fiore PP. Endocytosis and cancer: an 'insider' network with dangerous liaisons. *Traffic* 2008;9:2011–21.

69. El-Sayed A, Harashima H. Endocytosis of gene delivery vectors: from clathrin-dependent to lipid raft-mediated endocytosis. *Mol Ther* 2013; 21:1118–30.
70. Escrevente C, Keller S, Altevogt P, Costa J. Interaction and uptake of exosomes by ovarian cancer cells. *BMC Cancer* 2011;11:108.
71. Koumangoye RB, Sakwe AM, Goodwin JS, Patel T, Ochieng J. Detachment of breast tumor cells induces rapid secretion of exosomes which subsequently mediate cellular adhesion and spreading. *PLoS One* 2011;6: e24234.
72. Zech D, Rana S, Buchler MW, Zoller M. Tumor-exosomes and leukocyte activation: an ambivalent crosstalk. *Cell Commun Signal* 2012;10:37.
73. Calzolari A, Raggi C, Deaglio S, Sposi NM, Stafsnes M, Fecchi K, et al. TfR2 localizes in lipid raft domains and is released in exosomes to activate signal transduction along the MAPK pathway. *J Cell Sci* 2006; 119:4486–98.
74. Johnstone RM, Bianchini A, Teng K. Reticulocyte maturation and exosome release: transferrin receptor containing exosomes shows multiple plasma membrane functions. *Blood* 1989;74:1844–51.
75. Goldstein JL, Brown MS. The LDL receptor. *Arterioscler Thromb Vasc Biol* 2009;29:431–8.
76. Rajendran L, Simons K. Lipid rafts and membrane dynamics. *J Cell Sci* 2005;118:1099–102.
77. Cureton DK, Harbison CE, Cocucci E, Parrish CR, Kirchhausen T. Limited transferrin receptor clustering allows rapid diffusion of canine parvovirus into clathrin endocytic structures. *J Virol* 2012;86:5330–40.
78. Moller-Tank S, Maury W. Phosphatidylserine receptors: enhancers of enveloped virus entry and infection. *Virology* 2014;468–470:565–80.
79. Jeong HS, Na KS, Hwang H, Oh PS, Kim DH, Lim ST, et al. Effect of space length of mannose ligand on uptake of mannoseylated liposome in RAW 264.7 cells: In vitro and in vivo studies. *J Biomed Mat Res Part A* 2014;102:4545–53.
80. Kawachi Y, Kuroda Y, Kojima N. Preferences for uptake of carbohydrate-coated liposomes by C-type lectin receptors as antigen-uptake receptors. *Glycoconj J* 2012;29:481–90.
81. Watson DC, Bayik D, Srivatsan A, Bergamaschi C, Valentin A, Niu G, et al. Efficient production and enhanced tumor delivery of engineered extracellular vesicles. *Biomaterials* 2016;105:195–205.
82. Ritz S, Schottler S, Kotman N, Baier G, Musyanovych A, Kuharev J, et al. Protein corona of nanoparticles: distinct proteins regulate the cellular uptake. *Biomacromolecules* 2015;16:1311–21.
83. Guitart K, Loers G, Buck F, Bork U, Schachner M, Kleene R. Improvement of neuronal cell survival by astrocyte-derived exosomes under hypoxic and ischemic conditions depends on prion protein. *Glia* 2016;64:896–910.
84. Johannes L, Wunder C, Shafaq-Zadah M. Glycolipids and lectins in endocytic uptake processes. *J Mol Biol* 2016 Oct 27 [Epub ahead of print].
85. Heijnen HF, Schiel AE, Fijnheer R, Geuze HJ, Sixma JJ. Activated platelets release two types of membrane vesicles: microvesicles by surface shedding and exosomes derived from exocytosis of multivesicular bodies and alpha-granules. *Blood* 1999;94:3791–9.
86. Schlüter T, Knauth P, Wald S, Boland S, Bohnensack R. Numb3 is an endocytosis adaptor for the inflammatory marker P-selectin. *Biochem Biophys Res Commun* 2009;379:909–13.
87. Hao S, Bai O, Li F, Yuan J, Laferte S, Xiang J. Mature dendritic cells pulsed with exosomes stimulate efficient cytotoxic T-lymphocyte responses and antitumor immunity. *Immunology* 2007;120:90–102.
88. Yuan D, Zhao Y, Banks WA, Bullock KM, Haney M, Batrakova E, et al. Macrophage exosomes as natural nanocarriers for protein delivery to inflamed brain. *Biomaterials* 2017;142:1–12.
89. Saunderson SC, Dunn AC, Crocker PR, McLellan AD. CD169 mediates the capture of exosomes in spleen and lymph node. *Blood* 2014; 123:208–16.
90. Shimoda A, Tahara Y, Sawada SI, Sasaki Y, Akiyoshi K. Glycan profiling analysis using evanescent-field fluorescence-assisted lectin array: importance of sugar recognition for cellular uptake of exosomes from mesenchymal stem cells. *Biochem Biophys Res Commun* 2017;491: 701–7.
91. Thijssen VL, Heusschen R, Caers J, Griffioen AW. Galectin expression in cancer diagnosis and prognosis: a systematic review. *Biochim Biophys Acta* 2015;1855:235–47.
92. Keryer-Bibens C, Pioche-Durieu C, Villemant C, Souquere S, Nishi N, Hirashima M, et al. Exosomes released by EBV-infected nasopharyngeal carcinoma cells convey the viral latent membrane protein 1 and the immunomodulatory protein galectin 9. *BMC Cancer* 2006;6:283.
93. Thery C, Boussac M, Veron P, Ricciardi-Castagnoli P, Raposo G, Garin J, et al. Proteomic analysis of dendritic cell-derived exosomes: a secreted subcellular compartment distinct from apoptotic vesicles. *J Immunol* 2001;166:7309–18.
94. Jia YJ, Zhou ML, Zhou SH. Exosomes, microvesicles, and head and neck cancers. *Int J Clin Exp Med* 2016;9:15040–9.
95. Pesheva P, Kuklinski S, Schmitz B, Probstmeier R. Galectin-3 promotes neural cell adhesion and neurite growth. *J Neurosci Res* 1998;54:639–54.
96. Lakshminarayan R, Wunder C, Becken U, Howes MT, Benzing C, Arumugam S, et al. Galectin-3 drives glycosphingolipid-dependent biogenesis of clathrin-independent carriers. *Nat Cell Biol* 2014;16: 595–606.
97. Lodish H, Berk A, Zipursky SL, Matsudaira P, Baltimore D, Darnell J. *Molecular cell biology*. New York, NY: W.H. Freeman; 2000.
98. Morelli AE, Larregina AT, Shufesky WJ, Sullivan ML, Stolz DB, Papworth GD, et al. Endocytosis, intracellular sorting, and processing of exosomes by dendritic cells. *Blood* 2004;104:3257–66.
99. Tauro BJ, Greening DW, Mathias RA, Mathivanan S, Ji H, Simpson RJ. Two distinct populations of exosomes are released from LIM1863 colon carcinoma cell-derived organoids. *Mol Cell Proteom* 2013;12: 587–98.
100. Hanisch FG, Kinlough CL, Staubach S, Hughey RP. MUC1 membrane trafficking: protocols for assessing biosynthetic delivery, endocytosis, recycling, and release through exosomes. *Methods Mol Biol* 2012;842: 123–40.
101. Staubach S, Razawi H, Hanisch FG. Proteomics of MUC1-containing lipid rafts from plasma membranes and exosomes of human breast carcinoma cells MCF-7. *Proteomics* 2009;9:2820–35.
102. Merlin J, Stechly L, de Beauce S, Monte D, Leteurte E, van Seuningen J, et al. Galectin-3 regulates MUC1 and EGFR cellular distribution and EGFR downstream pathways in pancreatic cancer cells. *Oncogene* 2011; 30:2514–25.
103. Bilen MA, Pan T, Lee YC, Lin SC, Yu G, Pan J, et al. Proteomics profiling of exosomes from primary mouse osteoblasts under proliferation versus mineralization conditions and characterization of their uptake into prostate cancer cells. *J Proteome Res* 2017;16:2709–28.
104. Chakraborty S, Nunez D, Hu SY, Domingo MP, Pardo J, Karmenyan A, et al. FRET based quantification and screening technology platform for the interactions of leukocyte function-associated antigen-1 (LFA-1) with intercellular adhesion molecule-1 (ICAM-1). *PLoS One* 2014;9:e102572.
105. Segura E, Guerin C, Hogg N, Amigorena S, Thery C. CD8+ dendritic cells use LFA-1 to capture MHC-peptide complexes from exosomes in vivo. *J Immunol* 2007;179:1489–96.
106. Nolte H, Hoen EN, Buschow SI, Anderton SM, Stoorvogel W, Wauben MH. Activated T cells recruit exosomes secreted by dendritic cells via LFA-1. *Blood* 2009;113:1977–81.
107. Jang SC, Kim OY, Yoon CM, Choi DS, Roh TY, Park J, et al. Bioinspired exosome-mimetic nanovesicles for targeted delivery of chemotherapeutics to malignant tumors. *ACS Nano* 2013;7:7698–710.
108. Miksa M, Wu R, Dong W, Das P, Yang D, Wang P. Dendritic cell-derived exosomes containing milk fat globule epidermal growth factor-factor VIII attenuate proinflammatory responses in sepsis. *Shock* 2006;25:586–93.
109. Clayton A, Turkes A, Dewitt S, Steadman R, Mason MD, Hallett MB. Adhesion and signaling by B cell-derived exosomes: the role of integrins. *FASEB J* 2004;18:977–9.
110. Hoshino A, Costa-Silva B, Shen TL, Rodrigues G, Hashimoto A, Tesic Mark M, et al. Tumor exosome integrins determine organotropic metastasis. *Nature* 2015;527:329–35.
111. Chen L, Brigstock DR. Integrins and heparan sulfate proteoglycans on hepatic stellate cells (HSC) are novel receptors for HSC-derived exosomes. *FEBS Lett* 2016;590:4263–74.
112. Nazarenko I, Rana S, Baumann A, McAlear J, Hellwig A, Trendelenburg M, et al. Cell surface tetraspanin Tspan8 contributes to molecular pathways

- of exosome-induced endothelial cell activation. *Cancer Res* 2010;70:1668–78.
113. Rana S, Yue S, Stadel D, Zoller M. Toward tailored exosomes: the exosomal tetraspanin web contributes to target cell selection. *Int J Biochem Cell Biol* 2012;44:1574–84.
 114. Sarrazin S, Lamanna WC, Esko JD. Heparan sulfate proteoglycans. *Cold Spring Harbor Perspect Biol* 2011;3:pii:a004952.
 115. Mahley RW, Ji ZS. Remnant lipoprotein metabolism: key pathways involving cell-surface heparan sulfate proteoglycans and apolipoprotein E. *J Lipid Res* 1999;40:1–16.
 116. Wittrup A, Zhang SH, ten Dam GB, van Kuppevelt TH, Bengtson P, Johansson M, et al. ScFv antibody-induced translocation of cell-surface heparan sulfate proteoglycan to endocytic vesicles: evidence for heparan sulfate epitope specificity and role of both syndecan and glypican. *J Biol Chem* 2009;284:32959–67.
 117. Christianson HC, Belting M. Heparan sulfate proteoglycan as a cell-surface endocytosis receptor. *Matrix Biol* 2014;35:51–5.
 118. Belting M. Heparan sulfate proteoglycan as a plasma membrane carrier. *Trends Biochem Sci* 2003;28:145–51.
 119. Raff AB, Woodham AW, Raff LM, Skeate JC, Yan L, Da Silva DM, et al. The evolving field of human papillomavirus receptor research: a review of binding and entry. *J Virol* 2013;87:6062–72.
 120. Galaine J, Kellermann G, Guillaume Y, Boidot R, Picard E, Loyon R, et al. Heparan sulfate proteoglycans promote telomerase internalization and MHC class II presentation on dendritic cells. *J Immunol* 2016;197:1597–608.
 121. Wittrup A, Zhang SH, Svensson KJ, Kucharzewska P, Johansson MC, Morgelin M, et al. Magnetic nanoparticle-based isolation of endocytic vesicles reveals a role of the heat shock protein GRP75 in macromolecular delivery. *Proc Natl Acad Sci U S A* 2010;107:13342–7.
 122. Christianson HC, Svensson KJ, van Kuppevelt TH, Li JP, Belting M. Cancer cell exosomes depend on cell-surface heparan sulfate proteoglycans for their internalization and functional activity. *Proc Natl Acad Sci U S A* 2013;110:17380–5.
 123. Roucourt B, Meeussen S, Bao J, Zimmermann P, David G. Heparanase activates the syndecan-syntenin-ALIX exosome pathway. *Cell Res* 2015;25:412–28.
 124. Atai NA, Balaj L, van Veen H, Breakefield XO, Jarzyna PA, Van Noorden CJ, et al. Heparin blocks transfer of extracellular vesicles between donor and recipient cells. *J Neurooncol* 2013;115:343–51.
 125. Osterman CJ, Lynch JC, Leaf P, Gonda A, Ferguson Bennit HR, Griffiths D, et al. Curcumin modulates pancreatic adenocarcinoma cell-derived exosomal function. *PLoS One* 2015;10:e0132845.
 126. Franzen CA, Simms PE, Van Huis AF, Foreman KE, Kuo PC, Gupta GN. Characterization of uptake and internalization of exosomes by bladder cancer cells. *Biomed Res Int* 2014;2014:619829.
 127. Purushothaman A, Bandari SK, Liu J, Mobley JA, Brown EE, Sanderson RD. Fibronectin on the surface of myeloma cell-derived exosomes mediates exosome-cell interactions. *J Biol Chem* 2016;291:1652–63.
 128. Kobayashi N, Karisola P, Pena-Cruz V, Dorfman DM, Jinushi M, Umetsu SE, et al. TIM-1 and TIM-4 glycoproteins bind phosphatidylserine and mediate uptake of apoptotic cells. *Immunity* 2007;27:927–40.
 129. Miyanishi M, Tada K, Koike M, Uchiyama Y, Kitamura T, Nagata S. Identification of Tim4 as a phosphatidylserine receptor. *Nature* 2007;450:435–9.
 130. Matsumoto A, Takahashi Y, Nishikawa M, Sano K, Morishita M, Charoenviriyakul C, et al. Role of phosphatidylserine-derived negative surface charges in the recognition and uptake of intravenously injected B16BL6-derived exosomes by macrophages. *J Pharm Sci* 2017;106:168–75.
 131. Yuyama K, Sun H, Mitsutake S, Igarashi Y. Sphingolipid-modulated exosome secretion promotes clearance of amyloid-beta by microglia. *J Biol Chem* 2012;287:10977–89.
 132. Baglio SR, van Eijndhoven MA, Koppers-Lalic D, Berenguer J, Lougheed SM, Gibbs S, et al. Sensing of latent EBV infection through exosomal transfer of 5'pppRNA. *Proc Natl Acad Sci U S A* 2016;113:E587–96.
 133. Al-Nedawi K, Meehan B, Kerbel RS, Allison AC, Rak J. Endothelial expression of autocrine VEGF upon the uptake of tumor-derived microvesicles containing oncogenic EGFR. *Proc Natl Acad Sci U S A* 2009;106:3794–9.
 134. Sims B, Farrow AL, Williams SD, Bansal A, Krendelchtchikov A, Gu L, et al. Role of TIM-4 in exosome-dependent entry of HIV-1 into human immune cells. *Int J Nanomed* 2017;12:4823–33.
 135. Freeman GJ, Casasnovas JM, Umetsu DT, DeKruyff RH. TIM genes: a family of cell surface phosphatidylserine receptors that regulate innate and adaptive immunity. *Immunol Rev* 2010;235:172–89.
 136. Rodriguez-Manzanet R, Sanjuan MA, Wu HY, Quintana FJ, Xiao S, Anderson AC, et al. T and B cell hyperactivity and autoimmunity associated with niche-specific defects in apoptotic body clearance in TIM-4-deficient mice. *Proc Natl Acad Sci U S A* 2010;107:8706–11.
 137. Shostak K, Chariot A. EGFR and NF-kappaB: partners in cancer. *Trends Mol Med* 2015;21:385–93.
 138. Kharaziha P, Chioureas D, Rutishauser D, Baltatzis G, Lennartsson L, Fonseca P, et al. Molecular profiling of prostate cancer derived exosomes may reveal a predictive signature for response to docetaxel. *Oncotarget* 2015;6:21740–54.
 139. Kooijmans SA, Aleza CG, Roffler SR, van Solinge WW, Vader P, Schiffelers RM. Display of GPI-anchored anti-EGFR nanobodies on extracellular vesicles promotes tumour cell targeting. *J Extracell Vesicles* 2016;5:31053.
 140. Liu AP, Aguet F, Danuser G, Schmid SL. Local clustering of transferrin receptors promotes clathrin-coated pit initiation. *J Cell Biol* 2010;191:1381–93.
 141. Blanchard N, Lankar D, Faure F, Regnault A, Dumont C, Raposo G, et al. TCR activation of human T cells induces the production of exosomes bearing the TCR/CD3/zeta complex. *J Immunol* 2002;168:3235–41.
 142. Pienimaeki-Roemer A, Kuhlmann K, Bottcher A, Konovalova T, Black A, Orso E, et al. Lipidomic and proteomic characterization of platelet extracellular vesicle subfractions from senescent platelets. *Transfusion* 2015;55:507–21.
 143. Obregon C, Rothen-Rutishauser B, Gerber P, Gehr P, Nicod LP. Active uptake of dendritic cell-derived exovesicles by epithelial cells induces the release of inflammatory mediators through a TNF-alpha-mediated pathway. *Am J Pathol* 2009;175:696–705.
 144. Demory Beckler M, Higginbotham JN, Franklin JL, Ham AJ, Halvey PJ, Imasuen IE, et al. Proteomic analysis of exosomes from mutant KRAS colon cancer cells identifies intercellular transfer of mutant KRAS. *Mol Cell Proteom* 2013;12:343–55.
 145. Liang B, Peng P, Chen S, Li L, Zhang M, Cao D, et al. Characterization and proteomic analysis of ovarian cancer-derived exosomes. *J Proteomics* 2013;80:171–82.
 146. He M, Qin H, Poon TC, Sze SC, Ding X, Co NN, et al. Hepatocellular carcinoma-derived exosomes promote motility of immortalized hepatocyte through transfer of oncogenic proteins and RNAs. *Carcinogenesis* 2015;36:1008–18.