

Current and Emerging Clinical Applications of Multispectral Optoacoustic Tomography (MSOT) in Oncology ^{CME}

Lacey R. McNally¹, Megan Mezera², Desiree E. Morgan³, Peter J. Frederick⁴, Eddy S. Yang⁵, Isam-Eldin Eltoun⁶, and William E. Grizzle⁶

Abstract

Accurate detection and characterization of cancers are key for providing timely intervention and effective treatments. Current imaging technologies are particularly limited when it comes to detecting very small tumors *in vivo*, i.e., very early cancers or metastases, differentiating viable tumor from surrounding dead tumor tissue, and evaluating tumor metabolism within tissue. Optoacoustic imaging offers potential solutions to these imaging problems because of its ability to image optical absorption properties of both intrinsic tissue chromophores and exogenous contrast agents without the involvement of ionizing

radiation. Optoacoustic imaging uses pulsed laser to induce localized thermoelastic expansion that generates acoustic waves detectable by an ultrasound transducer. To date, multispectral optoacoustic tomography (MSOT) has primarily been used in preclinical research; however, its use in translational and clinical research is expanding. This review focuses on current and emerging applications of optoacoustic imaging for molecular imaging of cancer using both exogenous and endogenous contrast agents and sheds light on potential future clinical applications. *Clin Cancer Res*; 22(14); 3432–9. ©2016 AACR.

Disclosure of Potential Conflicts of Interest

No potential conflicts of interest were disclosed.

Editor's Disclosures

The following editor(s) reported relevant financial relationships: J.R. Grandis—None.

CME Staff Planners' Disclosures

The members of the planning committee have no real or apparent conflicts of interest to disclose.

Learning Objectives

Upon completion of this activity, the participant should have a better understanding of the basis for optoacoustic imaging, its potential for identifying functional and molecular information of tumors, and its clinical applications in oncology.

Acknowledgment of Financial or Other Support

This activity does not receive commercial support.

¹Department of Medicine, University of Louisville, Louisville, Kentucky. ²Department of Radiation Oncology, University of Louisville, Louisville, Kentucky. ³Department of Radiology, University of Alabama at Birmingham, Birmingham, Alabama. ⁴Department of Gynecology Oncology, Roswell Park Cancer Institute, Buffalo, New York. ⁵Department of Radiation Oncology, University of Alabama at Birmingham, Birmingham, Alabama. ⁶Department of Pathology, University of Alabama at Birmingham, Birmingham, Alabama.

Note: Supplementary data for this article are available at Clinical Cancer Research Online (<http://clincancerres.aacrjournals.org/>).

L.R. McNally and W.E. Grizzle share senior authorship.

Corresponding Author: Lacey R. McNally, University of Louisville, 505 S Hancock, CTR 307, Louisville, KY 40202. Phone: 502-852-2288; Fax: 502-852-2123; E-mail: lacey_mcnally@hotmail.com

doi: 10.1158/1078-0432.CCR-16-0573

©2016 American Association for Cancer Research.

Introduction

The accurate detection and localization of cancers *in vivo* are critical to medical decisions and improved treatments. Unfortunately, limitations of contrast (reporter) agents, resolution, and restrictions of depth reduce the ability of most imaging methods to detect and localize multiple contrast agents simultaneously; for example, EGFR plus PD-L1 localization restricts the ability to monitor tumors using imaging. Alternatively, optical imaging provides functional information and the ability to simultaneously detect multiple biomarkers as contrast agents; however, these approaches are restricted to superficial detection, as light scattering degrades the spatial resolution at increased penetration depths. Multispectral optoacoustic tomography (MSOT) is emerging as an alternative modality that is not restricted by many of the limitations of the imaging used in diagnosis and treatment

of diseases (1, 2). MSOT was initially developed for research (1, 3, 4) but has been adapted for clinical uses (2).

Optoacoustic imaging is based upon a "light-in, sound-out" approach through which absorption of near-infrared light (NIR) within biological tissues generates ultrasonic waves with much less scattering, longer range of detection, and higher accuracy compared with traditional optical imaging. The optoacoustic approach is unique, with increased optical contrast and signal-to-noise ratios (1–17). Optoacoustic imaging retains the advantages of optical imaging, including high specificity to identify functional and molecular processes in living organisms with high sensitivity. Most tissues are relatively transparent to NIR light in the range of 600 to 900 nm; therefore, use of NIR light excitation and ultrasound signals renders photon scattering irrelevant to image formation, enabling high-resolution images of the biological function of tumors and organs. Once the sound waves are generated, they obey the physical laws of sound transmission; the intensity of the sound increases with the number of molecules excited but is reduced by distance and the extent of ultrasound diffraction due to different densities of tissue. In MSOT, multiple spectral components of NIR light are varied automatically to excite specific molecules, permitting accurate tomographic images to be constructed from the resulting ultrasonic signals. MSOT is also unique in its ability to detect multiple contrast agents simultaneously based upon differential spectral shape (Supplementary Fig. S1).

Imaging of tumors and cancer-related morphologic changes in tissues by MSOT is facilitated through exogenous contrast agents, including clinically approved optical dyes (e.g., indocyanine green), markers targeted to cell surface molecules, for example, EGFR (7, 8), the tumor microenvironment (e.g., pH; refs. 1, 18), and endogenous absorbers (e.g., oxyhemoglobin; refs. 2, 17, 19, 20). Use of MSOT in multiple tissue types and at varying depths, i.e., at least 5 cm, can provide functional real-time three-dimensional (3D) information at high spatial resolution *in vivo* (refs. 2–4, 21; Fig. 1; Supplementary Video S1). This ability will have a significant impact on clinical care in systemic diseases, including cancer involving multiple organs. The ability of MSOT

to identify tumors indicates great potential for clinical applicability for solid tumors (2), such as melanoma, head and neck, breast, pancreatic, prostate, colon, and potentially liver cancer.

This article reviews current research as well as clinical applications of MSOT in oncology, including dynamic imaging of cancer biomarkers, nanoparticles, and real-time evaluation of cancer metabolism. Its aim is to highlight pertinent studies, especially of tumor-associated molecules, with the potential for use in MSOT for the clinical management of cancer.

Endogenous Contrast Agents

Endogenously occurring molecules and exogenous materials investigated as contrast agents for optoacoustic imaging are listed in Tables 1 and 2. Of importance, to date, there are relatively few endogenous contrast agents for MSOT.

Hemoglobin (oxyhemoglobin and deoxyhemoglobin)

Changes in vasculature are often associated with oncologic, inflammatory, and immune disorders, but microvascular changes occur below the resolution of common clinical imaging modalities. MSOT identifies microvasculature and tissue oxygenation by hemoglobin absorption of multiple wavelengths of light to generate high optoacoustic contrast (17, 22). Because oxy- and deoxyhemoglobin each generate a unique optoacoustic signal, both oxy- and deoxyhemoglobin can be observed simultaneously without the addition of exogenous contrast agents using MSOT (Fig. 2). MSOT can distinguish between oxygenation states of hemoglobin, allowing visualization of differential blood saturation by oxygen within tissues, including the capability to differentiate between ischemic areas of tumors and the surrounding tissue (1, 2). Of note, when an area becomes necrotic, it typically no longer contains hemoglobin; therefore, the necrotic area appears as "black" in MSOT reconstructions. MSOT can distinguish tumors from surrounding normal tissues by atypical vasculature and differences in tissue perfusion and oxygenation, and can detect vascular changes as markers of responses to antineoplastic therapies.

Figure 1.

Single-wavelength images were each captured using MSOT to form a background image. The representative images were taken at 900 nm. The image slices shown represent the region of the liver (A) and kidney (B). The following structures were identified: spinal cord (SC); aorta (A); vena cava (VC); vena porta (VP); liver (L); stomach (ST); kidney (K); and spleen (SP).

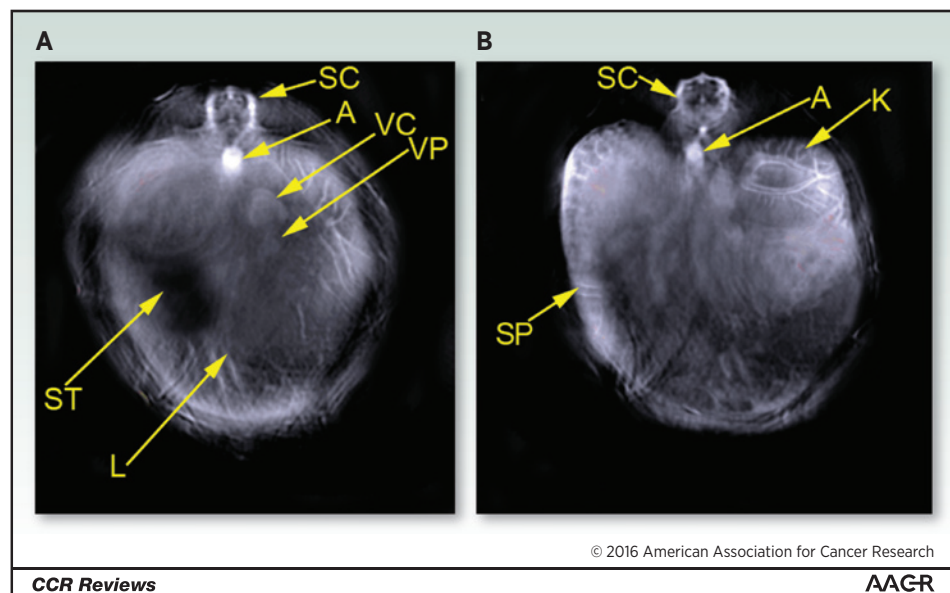


Table 1. Identification of contrast agents detectable using MSOT

Endogenous chromophores	Organic dyes	Nanoparticles
Oxyhemoglobin	Indocyanine green	Gold
Deoxyhemoglobin	Methylene blue	Iron oxide
Melanin	CF-750	Silver
	HiLite 750	Tungsten
	IR-780	Carbon nanotubes
	IR800CW	

NOTE: Endogenous chromophores and exogenous contrast agents, i.e., organic dyes and nanoparticles, detectable using MSOT.

Hemoglobin oxygenation has been used for tumor identification and characterization by detecting vascular abnormalities and oxygenation status (23). Currently, analytical methods, i.e., microbubble contrast identified using ultrasound, vascular spin labeling, and blood oxygen level dependent (BOLD), are used to identify thrombosis (24). However, recent studies have shown promising results for high-resolution optoacoustic imaging of breast cancer on the basis of tumor angiogenesis (1, 17, 25, 26); this approach has been used to monitor tumor responses to antiangiogenic agents, such as bevacizumab (23, 27). A recent advance is to use red blood cells that are homozygous for hemoglobin S; these cells deform under low oxygen, causing thrombosis in areas of tumors that are ischemic (28); MSOT may be useful for imaging all forms of thrombotic therapy.

Melanin

Melanin is another endogenous substance that acts as an optoacoustic agent over the wavelengths of NIR light pertinent to MSOT imaging. However, the strong optoacoustic signal obtained from high levels of melanin could inhibit the ability to detect other contrast agents. See "Melanomas" section below.

Exogenous Contrast Agents

Many tumor types express unique substances that could be useful as cancer markers and/or could be developed as potentially

clinically relevant targets for MSOT imaging to aid in diagnosis, staging, and characterization of common cancers, for example, EGFR, PD-L1, and PD-1, folate receptors, thyroglobulin, and HER2 (Table 2). MSOT provides an excellent link between tumor imaging and delivery of selective therapy. Studies of some of these biomarkers as targets for MSOT are in early stages.

Organic dyes

Advantages of exogenous contrast materials for MSOT are that they provide a wider range of contrast agents and possess absorption spectra distinct from the endogenous signals of the tissues being imaged; therefore, their signals can be separated from the tissue background using spectral unmixing in similar fashion as in the case of other dynamic contrast-enhanced methods such as fluorescent lifetime imaging (22). Organic dyes used in various clinical applications, including methylene blue (29) and indocyanine green (8, 30), can generate contrast for MSOT. NIR reporter dyes can be created to detect cancers using tumor-associated ligands, i.e., EGF, mAbs, nanoparticles, or agents to evaluate tumor microenvironmental features, for example, acidic pH or MMPs (see "Protolytic evaluation"; Fig. 3). A combination of endogenous and exogenous contrast agents improves the accuracy of sentinel lymph node biopsies and the characterization of patterns of lymphatic drainage of tumors (2, 31).

Nanoparticles

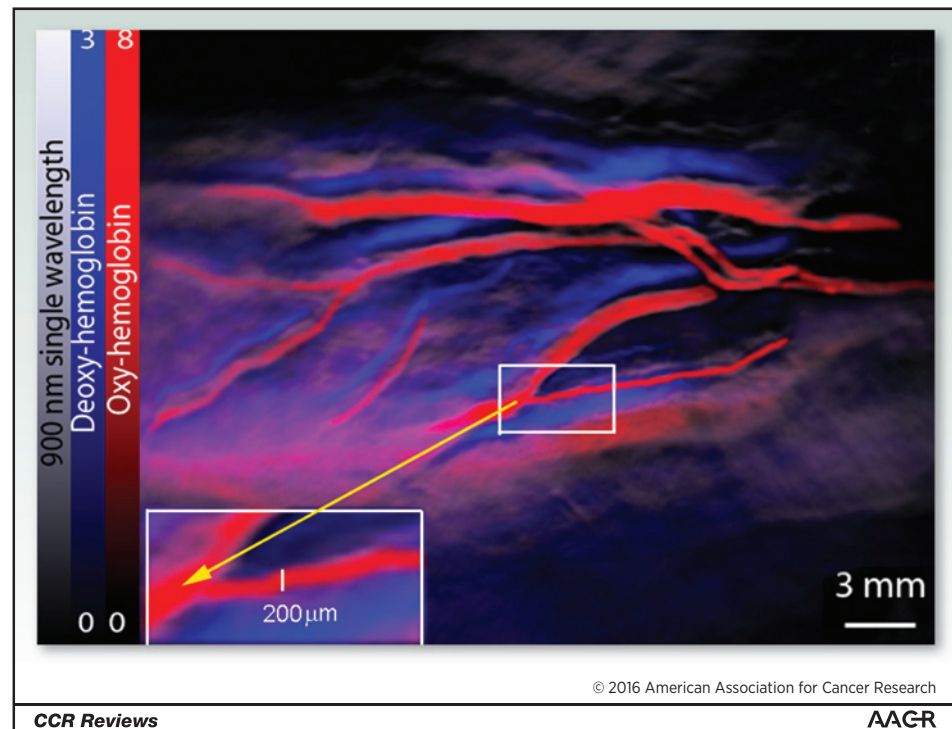
Improving local delivery of drugs is essential to decrease chemotherapy morbidity and to improve survival. The use of nanoparticles for tumor imaging along with targeted drug delivery has been investigated with numerous nanoagents containing fluorescent dyes, gold, or silver for imaging and therapeutic drug delivery vehicles (32–35). To improve tumor delivery of nanoagents to tumors, it is necessary to longitudinally track their biodistribution and accumulation, especially in the reticuloendothelial system, and to increase tumor accumulation and decrease off-target uptake. Because MSOT detects distinct absorption spectra, it can monitor longitudinally the distribution of

Table 2. mAbs to specific antigens associated with cancer with potential to serve as targeted contrast agents for MSOT

Antigen category	Examples of antigens	mAbs raised against these targets	Tumors expressing antigen
Cell growth and differentiation	EGFR	Cetuximab and panitumumab	Glioma, lung, breast, colon, and head and neck
	ERBB2	Trastuzumab and pertuzumab	Breast, colon, lung, ovarian, and prostate
	ERBB3	MM-121	Breast, colon, lung, ovarian, and prostate
	IGF1R	AVE1642, IMC-A12, MK-0646, R1507, and CP 751871	Pancreas, glioma, lung, breast, head and neck, prostate, and thyroid
	TRAILR1	TRA-8 and mapatumumab	Pancreas, colon, and lung
	EPHA3	KB004 and IIIA4	Lung, renal, and colon cancer; melanoma, glioma, and acute lymphoblastic leukemia
	MET	AMG 102 and METMAB	Breast, ovary, and lung
Targets of antiangiogenic mAbs	VEGF	Bevacizumab	Vasculature
	VEGFR	IM-2C6 and CDP791	Epithelial
	Integrin α V β 3	Etaracizumab	Vasculature
	Integrin α 5 β 1	Volociximab	Vasculature
Glycoproteins expressed by solid tumors	EpCAM	IGN101 and adecatumumab	Breast and colon
	CEA	Labetuzumab	Breast and colon
	Mucins (Muc 16)	Pemtumomab and oregovomab	Ovarian, breast, colon, and lung
	TAG-72	Minretumomab	Breast and colon
	CAIX	cG250	Renal cell carcinoma
	PSMA	J591	Prostate
	Folate-binding protein	Farletuzumab	Ovarian

Figure 2.

Oxy- and deoxyhemoglobin were detected using MSOT. Oxy- and deoxyhemoglobin were visualized within a human wrist using a preclinical MSOT instrument. The red color bar represents oxyhemoglobin, and the blue color bar represents deoxyhemoglobin. The gray-scale image was provided using a 900-nm single wavelength.



systemically administered nanoagents targeting tumors (Supplementary Video S2).

MSOT has identified tumor-specific accumulation and biodistribution of targeted gold nanorods, mesoporous silica nanoparticles, and liposomes in pancreatic tumors (9–11) and polymeric nanoparticles in breast tumors (35). Evaluation of tumor specificity, biodistribution, and pharmacokinetics of tumor-targeted nanoparticles, in the context of orthotopic and genetically modified organisms, represents an expanding, but inadequately developed use of MSOT; however, several light-absorbing materials, including gold (9, 36–38), tungsten (39), iron oxide nanoparticles (40), silver nanoparticles (41), carbon nanotubes (42, 43), or NIR dye-containing nanoparticles (10, 11, 44, 45), have been developed and have shown utility for optoacoustic imaging and/or MSOT in animal models.

Targeted surface agents

Because exogenous agents can target cancer-specific cell surface markers, some are used for both diagnostic and therapeutic targeting. Optical fluorescence imaging is a diagnostic approach in which a targeting agent is tagged with a fluorescent dye. Similarly, MSOT can be used by tagging the targeting agent with a contrast agent possessing absorption spectra within the NIR range (1, 7, 8). In practice, targeting agents may be used in combination with multiple organic dyes or nanoparticles and their spectra can be separated by spectral unmixing (8).

An excellent example of a targeted molecule for MSOT is EGFR, which has an external domain frequently targeted for therapeutic purposes (46, 47). This extracellular domain if overexpressed on cancer cells can be targeted with nanoparticles or other optoacoustic contrast agents bound to ligands or antibodies to EGFR. Conjugation of organic dyes or gold nanoparticles to blocking

(inhibitory) antibodies such as cetuximab could be used for treatment as well as imaging (48).

Tumor microenvironment

Acidic pH and tumor imaging. Due to the production of lactic acid, most malignant tumors develop areas of low extracellular pH (generally pH_e 6.4–6.8) compared with normal or uninvolved tissue, benign tumors, and most non-neoplastic diseases (pH 7.0–7.4). The acidic pH can be problematic for cancer therapy, as some chemotherapeutic agents do not function below pH_e 6.8. Acidic pH, $\text{pH}_e < 6.8$, also facilitates the development of metastases and inhibits immune cell function. In general, detection of cancer based on acidic pH using various imaging methods has been suboptimal due to (i) the narrow targeting window of $< \Delta 1.0$ pH between cancer and nonmalignant tissue and (ii) the high levels of pH-specific agents, such as aliphatic amines or carboxylates, which have a pK_a near the physiologic range used for MRI and can buffer the tumor (49–51).

Because MSOT generally requires a low concentrations of contrast agents, MSOT-based contrast agents identifying pH_e detect a variety of cancers. V7 is a peptide the structure of which is modified at $\text{pH}_e \leq 6.8$ permitting V7 to integrate it into the membranes of cells (1, 18). When this peptide is conjugated to a dye that absorbs NIR light, for example, V7–750, it selectively images cells in acidic pH_e areas (1, 18).

Protolytic evaluation

Several members of the family of MMPs, the zinc-dependent endopeptidases degrading the extracellular matrix (ECM), are implicated in cancer progression. Specifically, gelatinases A and B (MMP-2 and MMP-9) play a role in tumor invasion and angiogenesis, which promote tumor aggressiveness. An MMP-2–cleavable probe has been created that is detectable with

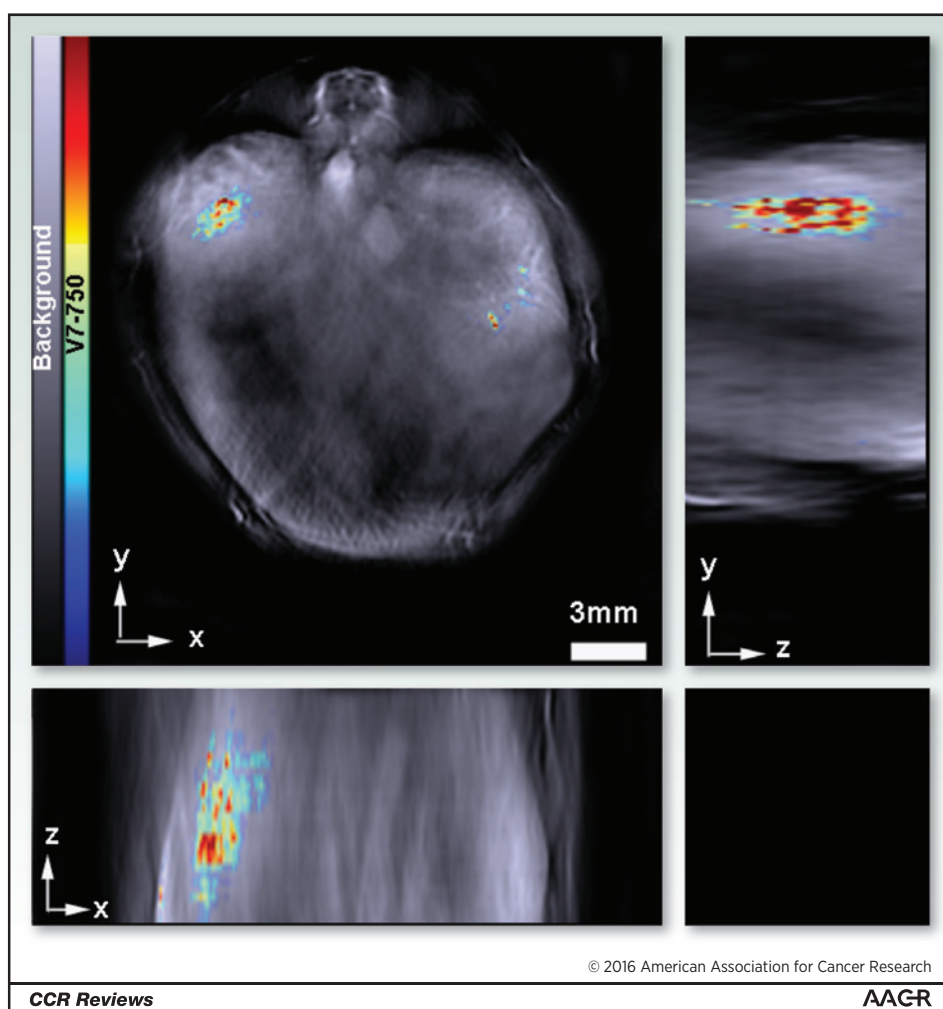


Figure 3.

Accumulation of a pH-responsive ligand-targeted probe within an orthotopic pancreatic tumor. The orthogonal image shows 3D accumulation of V7-750 within the mouse in the xyz-plane. The rainbow color bar represents intensity of the V7-750 probe. Adapted from Kimbrough et al. (1).

optoacoustic imaging (52). A cleavable linker attached to an optoacoustic sensitive reporter and cell anchoring peptide represents a general approach that has been used to monitor the *in vivo* activity of other extracellular enzymes, such as cathepsin D (53).

Clinical Cancer Imaging of Human Cancers

Imaging is important in the management of all cancer types, including staging of primary tumors, intraoperative identification of surgical margins, and determination of the effectiveness of neoadjuvant and definitive therapies. The goals of imaging vary with tumor type, location, and required depth for detection of tumor. For example, determining margins of a primary tumor of the ascending colon would seldom be important because very wide margins are used; however, imaging is likely to be important for therapeutic planning in patients with large cancers of the mouth or for application of novel therapies such as irreversible electroporation in patients with locally advanced pancreatic cancer. The following sections describe imaging of cancers using MSOT.

Melanomas

Because most melanomas express melanin, MSOT can aid in the diagnosis and staging of melanomas (2) by identifying the depth of

invasion and potential nodal metastases (2, 31). Also, melanomas can be identified because of their atypical patterns of vascularity. MSOT and optoacoustic imaging have been shown to detect melanin in sentinel lymph nodes *in vivo* and *ex vivo* with excellent concordance between *in vivo* imaging and *ex vivo* histology (2, 31). This capacity offers the potential for noninvasive identification of lymph nodes involved by tumor, potentially reducing the need for extensive surgical excisions and related complications. Identification by MSOT of micrometastatic disease permits more accurate sensitivity and specificity of sentinel lymph node biopsies, which will optimize surgical management as well as radiation and/or systemic therapies. Also, MSOT can be used to monitor potential metastatic sites for recurrence. While MSOT can detect melanoma based upon melanin, detection of amelanotic melanoma likely requires a tumor-specific exogenous contrast agent. With practice, it should be possible to differentiate melanin with macrophages (diffusely scattered) versus melanin in micrometastasis.

Breast cancer imaging

Accurate preoperative imaging of the breast is important in staging and planning for optimal management of breast cancers. Because malignancies have increased vascular density in comparison with normal human breast tissue, MSOT based on

oxyhemoglobin can distinguish between breast cancers and other abnormalities such as cysts, as shown using optoacoustic imaging (54). The diagnostic accuracy of MSOT may improve the detection of malignant masses especially in dense breasts, currently a problem for standard mammography (55). Alternatively, MSOT may be an important adjunct to mammography to characterize "suspicious" lesions. When axillary masses are identified in the absence of other clinical indications of breast cancer, MSOT can be used to identify metastatic disease, especially melanomas.

Head and neck lesions

Clinical versions of MSOT could detect metastatic nodal lesions of the head and neck, thyroid lesions, salivary gland tumors, and melanomas due to differences in neovascularity of benign versus malignant tumors, by identifying acidic areas and/or by targeting surface and other markers (e.g., melanin) of malignant cells; MSOT could image primary oral tumors, including benign and malignant salivary tumors and squamous cell carcinomas (SCC), and MSOT could identify the extent of involvement of bone and vascular structures by SCCs. While novel fluorescent imaging approaches are currently in development to aid intraoperatively in identifying precise surgical margins of head and neck lesions (56), most of these same contrast agents could be used to identify head and neck lesions with greater depth using MSOT.

Prostate cancer

Patients with elevated levels of prostate-specific antigen undergo ultrasound biopsies to identify cancers of the prostate; however, the urologist is blind as to the presence of prostate cancer at biopsy sites (57). This is improved by MRI fused with ultrasound to identify areas of the prostate that are suspicious for biologically aggressive and clinically relevant prostate cancer; however, MRI with ultrasound has limitations in visualization of biomarkers and functional properties of tumors (58). MSOT is likely to be a much more specific and sensitive approach to imaging small cryptic foci of prostate cancer that should be suitable with the current depth of detection based on vascular patterns or molecular markers, and it could be combined with current ultrasound guidance of biopsies to improve detection.

Ovarian cancer

Adnexal masses suspicious for malignancy are initially assessed with such imaging approaches as transvaginal ultrasonography plus serum tumor markers such as CA-125. Both lack sensitivity and specificity (59), so diagnostic laparoscopy is used, with biopsy to confirm the presence of malignancy. MSOT use prior to laparoscopic surgery could spare patients with benign masses the morbidity of more radical surgery and would identify areas of biopsy to confirm metastatic cancer with a hand-held MSOT probe (60). By using MSOT intraoperatively with minimally invasive surgery, the limitations of visual inspection and/or random biopsies during minimally invasive surgery could be reduced. MSOT would not be limited to the initial workup of an adnexal mass or staging for early ovarian cancer, as it also could facilitate identification of small mesenteric metastases. Patients with advanced ovarian cancer undergoing interval cytoreductive surgeries after neoadjuvant chemotherapy (61) or patients with recurrent disease also may be candidates for secondary cytoreductive surgeries (62) using MSOT to guide therapy. Thus, when lower disease volume is encountered and complete resection translates to improved survival, MSOT would be of clinical interest.

Preoperative Endoscopic and Laparoscopic Imaging for Resectable Tumors

Treatment of many cancers relies on complete resection for management. Preoperative staging by MSOT could better identify patients who are surgical candidates or have borderline resectable disease who might benefit from neoadjuvant therapy to achieve resectability. Even apparently effective neoadjuvant therapy may be complicated by the inability to distinguish fibrous tissue and dead tumor from viable tumor (63). Another complication is the potential for small regional metastases (e.g., lymph nodes, mesenteric tumor deposits) that are not detected with standard state-of-the-art imaging and have a negative impact on surgical outcomes. Inadequate detection of regional metastases is generally attributed to the low sensitivity of computed tomography for small-volume disease (64), leading to the addition of endoscopy and laparoscopy as part of the preoperative staging for certain tumors.

Staging of malignancies such as lymphomas, pancreatic cancer, and neuroblastomas is important to their therapy. Because MSOT uses ultrasound transducers for signal detection, it can be adapted if endoscopic ultrasound is used. The application of MSOT to gastrointestinal cancers (esophageal, gastric, small bowel, and colorectal cancers) may better characterize tumor depth of invasion and microscopic extent, resulting in more effective staging and treatment of these diseases. MSOT has a great potential for improving current endoscopic/laparoscopic methods and could be coupled with fine-needle aspiration with or without further injection of contrast agents.

Except for ultrasound, current laparoscopic optical imaging is limited by superficial visualization, so MSOT could provide molecular and functional detail beyond the information currently available. MSOT could provide more accurate delineation of tumor extent, lymphatic mapping, and/or detection of unknown regional metastases.

Clinical Sites Representing a Challenge to Imaging with MSOT

Transmission of ultrasound is optimal in tissues that have a high water content. Because air is a much less efficient medium in transferring sound, current versions of MSOT used to identify primary and metastatic lesions of the lung are not under development; however, MSOT may be used to identify pleural spread of tumors that cannot be detected by other imaging methods. Ultimately, bronchoscopic methods using transducers designed for endoscopic use may be developed to identify malignant lesions affecting the bronchi and adjacent tissues. Also, the air in the lung still may transfer the ultrasound images in somewhat less detail than in other tissues, particularly when intervening lung parenchyma is minimized by using navigational methods. While it is not currently known whether MSOT can detect changes in bone, the density of the bone could present a challenge.

Intraoperative Imaging by MSOT

In rats, MSOT and optoacoustic imaging have been useful in detecting sentinel lymph nodes involved with cancer because MSOT is more accurate than current methods that use methylene blue dye plus radiotracers (44). The development of MSOT for sentinel lymph node detection may make radiotracers obsolete, reducing exposure of patients and workers to radiation.

The use of MSOT intraoperatively to identify surgical margins may be a great advance for surgical management of such cancers as those of the oral cavity, anal area, lower rectum, and esophagus. Similarly, MSOT may permit accurate partial resections of tumors of the kidney, pancreas, larynx, and other organs. Using biomarkers such as HER2 or EGFR, MSOT may aid resection of minimal residual disease subsequent to therapy or prior surgical attempts at resection.

Discussion

Accurate detection and localization of cancers is key to providing more effective treatments. Current imaging technologies are limited for detecting small cancers or metastases, for differentiating viable tumor from surrounding nonviable tumor, and for evaluating tumor metabolism. With further development of contrast agents and hardware, MSOT offers solutions to these limitations. MSOT has primarily been used in research, but its clinical uses are expanding, particularly in oncology.

MSOT has the potential for clinical usefulness across a broad spectrum of cancer management. It provides the ability to distinguish viable tumor from surrounding benign tissue by detecting differences in vascularity, perfusion, metabolism, and molecular characteristics. Common cancer treatment changes, for example, scarring and inflammation, may be difficult to distinguish from tumor using ultrasound, MRI, CT, positron emission tomography, or single-photon emission CT; furthermore, residual or

recurrent tumor could be identified with the relevant molecular information based on endogenous and exogenous contrast agents below spatial resolution of these technologies. MSOT may separate benign from malignant tissues by detecting areas of ischemia via presence of deoxyhemoglobin, low pH (by V7-750), metabolism (2-deoxyglucose), neovascularization, and cell surface molecules of malignant tumors.

Combining MSOT with other approaches can improve the accuracy of cancer detection, diagnosis, and staging, and aid in medical decision making. Intraoperative use of MSOT may improve detection of margins and metastases and assist in minimally invasive surgery. Visualization of vascularity of tumors may facilitate monitoring of successful treatment before anatomic tumor shrinkage and permit early detection of recurrence or metastases that may hasten implementation of salvage therapies. As clinical use of MSOT increases, new applications of MSOT are likely.

Grant Support

This work was funded in part by the Cooperative Human Tissue Network (1CA183728) and the UAB Pancreatic (P50CA101955) and Breast (P50CA089019) SPOREs (to W.E. Grizzle).

Received March 3, 2016; revised May 13, 2016; accepted May 13, 2016; published OnlineFirst May 20, 2016.

References

1. Kimbrough CW, Khanal A, Zeiderman M, Khanal BR, Burton NC, McMasters KM, et al. Targeting acidity in pancreatic adenocarcinoma: multispectral optoacoustic tomography detects pH-low insertion peptide probes *in vivo*. *Clin Cancer Res* 2015;21:4576–85.
2. Stoffels I, Morscher S, Helfrich I, Hillen U, Leyh J, Burton NC, et al. Noninvasive and nonradioactive determination of sentinel lymph node tumor status in melanoma using multispectral optoacoustic imaging. *Sci Transl Med* 2015;7:317.
3. Ntziachristos V, Razansky D. Molecular imaging by means of multispectral optoacoustic tomography (MSOT). *Chem Rev* 2010;110:2783–94.
4. Razansky D, Baeten J, Ntziachristos V. Sensitivity of molecular target detection by multispectral optoacoustic tomography (MSOT). *Med Phys* 2009;36:939–45.
5. Kellnberger S, Deliolanis NC, Queirós D, Sergiadis G, Ntziachristos V. *In vivo* frequency domain optoacoustic tomography. *Opt Lett* 2012;37:3423–5.
6. Garcia-Allende PB, Glatz J, Koch M, Ntziachristos V. Enriching the interventional vision of cancer with fluorescence and optoacoustic imaging. *J Nucl Med* 2013;54:664–7.
7. Hudson SV, Huang JS, Yin W, Albeituni S, Rush J, Khanal A, et al. Targeted noninvasive imaging of EGFR-expressing orthotopic pancreatic cancer using multispectral optoacoustic tomography. *Cancer Res* 2014;74:6271–9.
8. Kimbrough CW, Hudson S, Khanal A, Egger ME, McNally LR. Orthotopic pancreatic tumors detected by optoacoustic tomography using Syndecan-1. *J Surg Res* 2015;193:246–54.
9. Khanal A, Ullum C, Kimbrough CW, Garbett NC, Burlison JA, McNally MW, et al. Tumor targeted mesoporous silica-coated gold nanorods facilitate detection of pancreatic tumors using Multispectral optoacoustic tomography. *Nano Res* 2015;8:3864–77.
10. Yin W, Kimbrough CW, Gomez-Gutierrez JG, Burns CT, Chuong P, Grizzle WE, et al. Tumor specific liposomes improve detection of pancreatic adenocarcinoma *in vivo* using optoacoustic tomography. *J Nanobiotechnol* 2015;13:90.
11. Gurka MK, Pender D, Chuong P, Fouts B, Sobelov A, McNally M, et al. Identification of pancreatic tumors *in vivo* with ligand-targeted, pH responsive mesoporous silica nanoparticles by multispectral optoacoustic tomography. *J Control Release* 2016;231:60–7.
12. Tuchin VV, Genina EA, Bashkatov AN, Simonenko GV, Odoevskaya OD, Altshuler GB. A pilot study of ICG laser therapy of acne vulgaris: photodynamic and photothermolysis treatment. *Lasers Surg Med* 2003;33:296–310.
13. Li R, Wang P, Lan L, Lloyd FP, Goergen CJ, Chen S, et al. Assessing breast tumor margin by multispectral photoacoustic tomography. *Biomed Optics Expr* 2015;6:1273–81.
14. Deán-Ben XL, Razansky D. Adding fifth dimension to optoacoustic imaging: volumetric time-resolved spectrally enriched tomography. *Light Sci Appl* 2014;3:e137.
15. Ma R, Taruttis A, Ntziachristos V, Razansky D. Multispectral optoacoustic tomography (MSOT) scanner for whole-body small animal imaging. *Optics Expr* 2009;17:21414–26.
16. Ntziachristos V, Ripoll J, Wang LV, Weissleder R. Looking and listening to light: the evolution of whole-body photonic imaging. *Nat Biotechnol* 2005;23:313–20.
17. Mason RP. Commentary on photoacoustic tomography. *J Nucl Med* 2015;56:1815–6.
18. Reshetnyak YK. Imaging tumor acidity: pH-low insertion peptide probe for optoacoustic tomography. *Clin Cancer Res* 2015;21:4502–4.
19. Stritzker J, Kirscher L, Scadeng M, Deliolanis NC, Morscher S, Symvoulidis P, et al. Vaccinia virus-mediated melanin production allows MR and optoacoustic deep tissue imaging and laser-induced thermotherapy of cancer. *Proc Natl Acad Sci U S A* 2013;110:3316–20.
20. Herzog E, Taruttis A, Beziere N, Lutich AA, Razansky D, Ntziachristos V. Optical imaging of cancer heterogeneity with multispectral optoacoustic tomography. *Radiology* 2012;263:461–8.
21. Wang LV, Hu S. Photoacoustic tomography: *in vivo* imaging from organelles to organs. *Science* 2012;335:1458–62.
22. Tzoumas S, Deliolanis N, Morscher S, Ntziachristos V. Unmixing molecular agents from absorbing tissue in multispectral optoacoustic tomography. *IEEE Trans Med Imaging* 2014;33:48–60.
23. Bohndiek SE, Saspotas LS, Machtaler S, Jorke J, Hori S, Gambhir SS. Photoacoustic tomography detects early vessel regression and

- normalization during ovarian tumor response to the antiangiogenic therapy trebananib. *J Nucl Med* 2015;56:1942–7.
24. Mason RP, Zhao D, Liu L, Trawick ML, Pinney KG. A perspective on vascular disrupting agents that interact with tubulin: preclinical tumor imaging and biological assessment. *Integr Biol* 2011;3:375–87.
 25. Buehler A, Kacprowicz M, Taruttis A, Ntziachristos V. Real-time handheld multispectral optoacoustic imaging. *Opt Lett* 2013;38:1404–6.
 26. Mallidi S, Luke GP, Emelianov S. Photoacoustic imaging in cancer detection, diagnosis, and treatment guidance. *Trends Biotechnol* 2011;29:213–21.
 27. Ruan Q, Xi L, Boye SL, Han S, Chen ZJ, Hauswirth WW, et al. Development of an anti-angiogenic therapeutic model combining scAAV2-delivered siRNAs and noninvasive photoacoustic imaging of tumor vasculature development. *Cancer Lett* 2013;332:120–9.
 28. Choe SW, Terman DS, Rivers AE, Rivera J, Lottenberg R, Sorg BS. Drug-loaded sickle cells programmed *ex vivo* for delayed hemolysis target hypoxic tumor microvessels and augment tumor drug delivery. *J Control Release* 2013;171:184–92.
 29. Song KH, Stein EW, Margenthaler JA, Wang LV. Noninvasive photoacoustic identification of sentinel lymph nodes containing methylene blue *in vivo* in a rat model. *J Biomed Optics* 2008;13:054033.
 30. Morscher S, Driessen WH, Claussen J, Burton NC. Semi-quantitative Multispectral Optoacoustic Tomography (MSOT) for volumetric PK imaging of gastric emptying. *Photoacoustics* 2014;2:103–10.
 31. Langhout GC, Grootendorst DJ, Nieweg OE, Wouters MW, van der Hage JA, Jose J. Detection of melanoma metastases in resected human lymph nodes by noninvasive multispectral photoacoustic imaging. *Int J Biomed Imaging* 2014;2014:163652.
 32. Chithrani DB. Nanoparticles for improved therapeutics and imaging in cancer therapy. *Recent Patent Nanotechnol* 2010;4:171–80.
 33. Ahmed N, Fessi H, Elaissari A. Theranostic applications of nanoparticles in cancer. *Drug Discov Today* 2012;17:928–34.
 34. Song W, Tang Z, Zhang D, Burton N, Driessen W, Chen X. Comprehensive studies of pharmacokinetics and biodistribution of indocyanine green and liposomal indocyanine green by multispectral optoacoustic tomography. *RSC Adv* 2015;5:3807–13.
 35. Balasundaram G, Ho CJH, Li K, Driessen W, Dinis US, Wong CL, et al. Molecular photoacoustic imaging of breast cancer using an actively targeted conjugated polymer. *Int J Nanomed* 2015;10:387–97.
 36. Bao C, Beziere N, del Pino P, Pelaz B, Estrada G, Tian F, et al. Gold nanoprisms as optoacoustic signal nanoamplifiers for *in vivo* bioimaging of gastrointestinal cancers. *Small* 2013;9:68–74.
 37. Conversano F, Soloperto G, Greco A, Ragusa A, Casciaro E, Chiriaco F, et al. Echographic detectability of optoacoustic signals from low-concentration PEG-coated gold nanorods. *Int J Nanomed* 2012;7:4373–89.
 38. Vonnemann J, Beziere N, Bottcher C, Riese SB, Kuehne C, Dervede J, et al. Polyglycerolsulfate functionalized gold nanorods as optoacoustic signal nanoamplifiers for *in vivo* bioimaging of rheumatoid arthritis. *Theranostics* 2014;4:629–41.
 39. Liu Z, Liu J, Wang R, Du Y, Ren J, Qu X. An efficient nano-based theranostic system for multi-modal imaging-guided photothermal sterilization in gastrointestinal tract. *Biomaterials* 2015;56:206–18.
 40. An Q, Liu J, Yu M, Wan J, Li D, Wang C, et al. Multifunctional magnetic Gd³⁺-based coordination polymer nanoparticles: combination of magnetic resonance and multispectral optoacoustic detections for tumor-targeted imaging *in vivo*. *Small* 2015;11:5675–86.
 41. Homan KA, Souza M, Truby R, Luke GP, Green C, Vreeland E, et al. Silver nanoplate contrast agents for *in vivo* molecular photoacoustic imaging. *ACS Nano* 2012;6:641–50.
 42. De La Zerda A, Zavaleta C, Keren S, Vaithilingam S, Bodapati S, Liu Z, et al. Carbon nanotubes as photoacoustic molecular imaging agents in living mice. *Nature Nanotechnol* 2008;3:557–62.
 43. Pramanik M, Song KH, Swierczewska M, Green D, Sitharaman B, Wang LV. *In vivo* carbon nanotube-enhanced non-invasive photoacoustic mapping of the sentinel lymph node. *Phys Med Biol* 2009;54:3291.
 44. Kim C, Song KH, Gao F, Wang LV. Sentinel lymph nodes and lymphatic vessels: noninvasive dual-modality *in vivo* mapping by using indocyanine green in rats—volumetric spectroscopic photoacoustic imaging and planar fluorescence imaging. *Radiology* 2010;255:442–50.
 45. Beziere N, Lozano N, Nunes A, Salichs J, Queiros D, Kostarelou K, et al. Dynamic imaging of PEGylated indocyanine green (ICG) liposomes within the tumor microenvironment using multi-spectral optoacoustic tomography (MSOT). *Biomaterials* 2015;37:415–24.
 46. Bonner JA, Buchsbaum DJ, Russo SM, Fiveash JB, Trummell HQ, Curiel DT, et al. Anti-EGFR-mediated radiosensitization as a result of augmented EGFR expression. *Int J Radiat Oncol Biol Phys* 2004;59:2–10.
 47. Buchsbaum DJ, Bonner JA, Grizzle WE, Stackhouse MA, Carpenter M, Hicklin DJ, et al. Treatment of pancreatic cancer xenografts with Erbitux (IMC-C225) anti-EGFR antibody, gemcitabine, and radiation. *Int J Radiat Oncol Biol Phys* 2002;54:1180–93.
 48. Markman B, Javier Ramos F, Capdevila J, Tabernero J. EGFR and KRAS in colorectal cancer. *Adv Clin Chem* 2010;51:71–119.
 49. Chen LQ, Randtke EA, Jones KM, Moon BF, Howison CM, Pagel MD. Evaluations of tumor acidosis within *in vivo* tumor models using parametric maps generated with AcidoCEST MRI. *Mol Imaging Biol* 2015:1–9.
 50. Gillies RJ, Raghunand N, Garcia-Martin ML, Gatenby RA. pH imaging. A review of pH measurement methods and applications in cancers. *IEEE Eng Med Biol Mag* 2004;23:57–64.
 51. Gillies RJ, Raghunand N, Karczmar GS, Bhujwala ZM. MRI of the tumor microenvironment. *J Magn Reson Imaging* 2002;16:430–50.
 52. Levi J, Kothapalli SR, Ma TJ, Hartman K, Khuri-Yakub BT, Gambhir SS. Design, synthesis, and imaging of an activatable photoacoustic probe. *J Am Chem Soc* 2010;132:11264–9.
 53. Tung CH, Mahmood U, Bredow S, Weissleder R. *In vivo* imaging of proteolytic enzyme activity using a novel molecular reporter. *Cancer Res* 2000;60:4953–8.
 54. Heijblom M, Piras D, Brinkhuis M, Van Hespén J, Van den Engh F, Van der Schaaf M, et al. Photoacoustic image patterns of breast carcinoma and comparisons with magnetic resonance imaging and vascular stained histopathology. *Sci Rep* 2015;5:11778.
 55. Jackson VP, Hendrick RE, Feig SA, Kopans DB. Imaging of the radiographically dense breast. *Radiology* 1993;188:297–301.
 56. Rosenthal EL, Warram JM, de Boer E, Chung TK, Korb ML, Brandwein-Gensler M, et al. Safety and tumor specificity of cetuximab-IRDye800 for surgical navigation in head and neck cancer. *Clin Cancer Res* 2015;21:3658–66.
 57. Boesen L, Noergaard N, Chabanova E, Logager V, Balslev I, Mikkelsen K, et al. Early experience with multiparametric magnetic resonance imaging-targeted biopsies under visual transrectal ultrasound guidance in patients suspicious for prostate cancer undergoing repeated biopsy. *Scand J Urol* 2015;49:25–34.
 58. Cash H, Günzel K, Maxeiner A, Stephan C, Fischer T, Durmus T, et al. Prostate cancer detection on transrectal ultrasonography-guided random biopsy despite negative real-time magnetic resonance imaging/ultrasonography fusion-guided targeted biopsy: reasons for targeted biopsy failure. *BJU Int* 2016;118:35–43.
 59. American College of Obstetricians and Gynecologists. ACOG Practice Bulletin. Management of adnexal masses. *Obstet Gynecol* 2007;110:201–14.
 60. Cibula D, Oonk MH, Abu-Rustum NR. Sentinel lymph node biopsy in the management of gynecologic cancer. *Curr Opin Obstet Gynecol* 2015;27:66–72.
 61. Seward SM, Winer I. Primary debulking surgery and neoadjuvant chemotherapy in the treatment of advanced epithelial ovarian carcinoma. *Cancer Metastasis Rev* 2015;34:5–10.
 62. Frederick PJ, Ramirez PT, McQuinn L, Milam MR, Weber DM, Coleman RL, et al. Preoperative factors predicting survival after secondary cytoreduction for recurrent ovarian cancer. *Int J Gynecol Cancer* 2011;21:831–6.
 63. Tzeng CW, Fleming JB, Lee JE, Xiao L, Pisters PW, Vauthey JN, et al. Defined clinical classifications are associated with outcome of patients with anatomically resectable pancreatic adenocarcinoma treated with neoadjuvant therapy. *Ann Surg Oncol* 2012;19:2045–53.
 64. Pietryga JA, Morgan DE. Imaging preoperatively for pancreatic adenocarcinoma. *J Gastrointest Oncol* 2015;6:343–57.