

# Breast Cancer Risk Prediction Using Clinical Models and 77 Independent Risk-Associated SNPs for Women Aged Under 50 Years: Australian Breast Cancer Family Registry

Gillian S. Dite<sup>1</sup>, Robert J. MacInnis<sup>1,2</sup>, Adrian Bickerstaffe<sup>1</sup>, James G. Dowty<sup>1</sup>, Richard Allman<sup>3</sup>, Carmel Apicella<sup>1</sup>, Roger L. Milne<sup>1,2</sup>, Helen Tsimiklis<sup>4</sup>, Kelly-Anne Phillips<sup>1,5,6</sup>, Graham G. Giles<sup>1,2</sup>, Mary Beth Terry<sup>7</sup>, Melissa C. Southey<sup>4</sup>, and John L. Hopper<sup>1</sup>

## Abstract

**Background:** The extent to which clinical breast cancer risk prediction models can be improved by including information on known susceptibility SNPs is not known.

**Methods:** Using 750 cases and 405 controls from the population-based Australian Breast Cancer Family Registry who were younger than 50 years at diagnosis and recruitment, respectively, Caucasian and not *BRCA1* or *BRCA2* mutation carriers, we derived absolute 5-year risks of breast cancer using the BOADICEA, BRCAPRO, BCRAT, and IBIS risk prediction models and combined these with a risk score based on 77 independent risk-associated SNPs. We used logistic regression to estimate the OR per adjusted SD for log-transformed age-adjusted 5-year risks. Discrimination was assessed by the area under the receiver operating characteristic curve (AUC). Calibration was assessed using the Hosmer–Lemeshow goodness-of-fit test. We also constructed

reclassification tables and calculated the net reclassification improvement.

**Results:** The ORs for BOADICEA, BRCAPRO, BCRAT, and IBIS were 1.80, 1.75, 1.67, and 1.30, respectively. When combined with the SNP-based score, the corresponding ORs were 1.96, 1.89, 1.80, and 1.52. The corresponding AUCs were 0.66, 0.65, 0.64, and 0.57 for the risk prediction models, and 0.70, 0.69, 0.66, and 0.63 when combined with the SNP-based score.

**Conclusions:** By combining a 77 SNP-based score with clinical models, the AUC for predicting breast cancer before age 50 years improved by >20%.

**Impact:** Our estimates of the increased performance of clinical risk prediction models from including genetic information could be used to inform targeted screening and prevention. *Cancer Epidemiol Biomarkers Prev*; 25(2): 359–65. ©2015 AACR.

## Introduction

Information from breast cancer risk prediction models is important at the population level to aid decisions on the cost-effective use of limited resources for screening and prevention. It is also useful at the individual level to help women make decisions on screening or prevention tailored to their specific

circumstances (1–3). Commonly used breast cancer risk prediction models include the Breast and Ovarian Analysis of Disease Incidence and Carrier Estimation Algorithm (BOADICEA) (4, 5) and BRCAPRO (6–8), both of which are based on pedigree data for breast and ovarian cancer; the Breast Cancer Risk Assessment Tool (BCRAT) (9, 10), which is based on established risk factors and first-degree family history of breast cancer; and the International Breast Cancer Intervention Study (IBIS) model (11), which is based on established risk factors and first-degree and second-degree family history of breast cancer. There have been several prospective validation studies of these models across different age distributions and geographic locations with varied results (12–16). Risk prediction models need to be well calibrated to provide accurate information on the proportion of the population that will develop the disease, and they also need sufficient discriminatory accuracy to be clinically useful. Reclassification tables can be used to quantify the proportion of women that move into, or out of, clinically important risk categories (17).

Since 2007, genome-wide association studies have identified many SNPs that are each associated with a small increment in breast cancer risk. Although no single SNP is causal or informative on its own, considering the combined associations of these SNPs has the potential to improve estimates of individual breast cancer

<sup>1</sup>Centre for Epidemiology and Biostatistics, The University of Melbourne, Victoria, Australia. <sup>2</sup>Cancer Epidemiology Centre, Cancer Council Victoria, Melbourne, Victoria, Australia. <sup>3</sup>Genetic Technologies Ltd., Fitzroy, Australia. <sup>4</sup>Genetic Epidemiology Laboratory, Department of Pathology, The University of Melbourne, Victoria, Australia. <sup>5</sup>Division of Cancer Medicine, Peter MacCallum Cancer Centre, Melbourne, Australia. <sup>6</sup>Sir Peter MacCallum Department of Oncology, The University of Melbourne, Victoria, Australia. <sup>7</sup>Department of Epidemiology, Mailman School of Public Health, Columbia University, New York, New York.

**Note:** Supplementary data for this article are available at Cancer Epidemiology, Biomarkers & Prevention Online (<http://cebp.aacrjournals.org/>).

**Corresponding Author:** John L. Hopper, Centre for Epidemiology and Biostatistics, The University of Melbourne, Parkville, VIC 3010, Australia. Phone: 61-3-8344-0697; Fax: 61-3-9349-5815; E-mail [j.hopper@unimelb.edu.au](mailto:j.hopper@unimelb.edu.au)

**doi:** 10.1158/1055-9965.EPI-15-0838

©2015 American Association for Cancer Research.

risk, as has been recently shown by the Breast Cancer Association Consortium (18).

Modelling and empirical studies have quantified how much the area under the receiver operating characteristic curve (AUC) for BCRAT can be increased by including 7 (19–21) or 10 SNPs (22). Other analyses have shown how the classification of women into high-risk groups is improved by including 7 SNPs (19, 20, 23) or 15 SNPs (24) with BCRAT. Analyses of 18 SNPs (25) and simulations of 67 SNPs (25, 26) have quantified the improvement in the ability of IBIS to discriminate women at high risk of breast cancer, whereas the addition of 76 SNPs and a measure of mammographic density has been shown to increase the AUC for the Breast Cancer Surveillance consortium risk prediction model (27).

Recently, 77 SNPs have been identified that are independently associated with breast cancer and a combined risk score with an AUC of 0.622 [95% confidence interval (CI), 0.619–0.627] and account for 14% of the familial aggregation of breast cancer (18). This large multicenter study, however, did not include information on family history and other risk factors, so the clinical utility of the current best SNP-based risk prediction has yet to be formally addressed.

We previously investigated combining the BCRAT risk prediction model with a risk score based on 7 SNPs (19). We now investigate the extent to which risk estimates obtained from BOADICEA, BRCAPRO, BCRAT, and IBIS can be improved, in terms of their calibration and discriminatory accuracy, by combination with a risk score based on the previously identified 77 SNPs (18).

## Materials and Methods

### Sample

We studied cases and controls from the population-based component of the Australian site of the Breast Cancer Family Registry (ABCFR), which has been described in detail previously (28–30). Cases and controls were recruited during 1992 to 1999 and were adult women living in metropolitan Sydney or Melbourne. Cases were identified from the population-complete cancer registries in New South Wales and Victoria, and included all women aged less than 40 years and a random sample of women aged 40 to 59 years at diagnosis of a histologically confirmed first primary invasive breast cancer. Controls were selected from the electoral roll (to which registration is compulsory for Australian citizens) using proportional random sampling based on the expected age distribution of the cases. All cases and controls completed an interviewer-administered questionnaire that asked about established and putative risk factors for breast cancer and details of cancer diagnoses concerning themselves and their first-degree and second-degree adult relatives. Participants were also asked to provide a blood sample.

The ABCFR recruited 1,223 cases and 805 controls who were aged under 50 years at diagnosis and recruitment, respectively. Of these, 905 (74%) cases and 490 (61%) controls provided a blood sample, and genotyping was performed by the Collaborative Oncological Gene-Environment Study for the 750 cases and 405 controls who were Caucasian and not known to be carriers of mutations in *BRCA1* or *BRCA2*. Estrogen receptor (ER) and progesterone receptor (PR) statuses were available for

416 (55%) of the cases. For BCRAT, risk score calculations were limited to the 568 cases and 280 controls aged 35 years or older at diagnosis and recruitment, respectively. Genotyping was performed by the Collaborative Oncological Gene-Environment Study ([www.cogseu.org](http://www.cogseu.org)) using a custom Illumina iSelect array (31). The 77 SNPs used in this study were those used by Mavaddat and colleagues (18).

Ethics approval for the study was granted by the human research ethics committees of the University of Melbourne, the Victorian Cancer Council, and the New South Wales Cancer Council.

### Risk prediction models

We calculated the 5-year absolute risk of invasive breast cancer at baseline using four risk prediction models: BOADICEA (4, 5), BRCAPRO (6–8), BCRAT (9, 10), and IBIS (11). For cases, we ignored personal breast cancer diagnosis in the risk calculations. For BOADICEA and BRCAPRO, unknown age at cancer diagnosis for relatives was changed to the earliest of either age at last follow-up or 70 years. For BCRAT, we did not have information on biopsies or atypical hyperplasia, so these variables were coded as unknown. In accordance with BCRAT's design, its application was restricted to women aged 35 years or older (9, 10). For IBIS, we did not have information on hyperplasia or lobular carcinoma *in situ*; these and unknown ages were coded as missing. The risk factors based on these risk prediction models were the age-adjusted log 5-year risks.

### SNP-based risk score

Using the approach of Mealiffe and colleagues (20), we calculated an SNP-based (relative) risk score using previously published estimates of the OR per allele and risk allele frequency ( $p$ ; ref. 18) assuming independent and additive risks on the log OR scale. For each SNP, we calculated the unscaled population average risk as  $\mu = (1 - p)^2 + 2p(1 - p)OR + p^2OR^2$ . Adjusted risk values (with a population average risk equal to 1) were calculated as  $1/\mu$ ,  $OR/\mu$ , and  $OR^2/\mu$  for the three genotypes defined by number of risk alleles (0, 1, or 2). The overall SNP-based risk score was then calculated by multiplying the adjusted risk values for each of the 77 SNPs (19).

### Combined risk prediction model and SNP-based risk scores

For each of BOADICEA, BRCAPRO, BCRAT, and IBIS, we calculated a combined risk score by multiplying the SNP-based risk score by the model's predicted 5-year absolute risk of breast cancer. As for the risk prediction model scores, the risk factors were the age-adjusted log 5-year risks.

### Statistical analysis

The model risk scores, the SNP-based score based on the published estimates, and the combined risk scores were log transformed for all analyses. We used Pearson correlation to test for associations between the model risk scores, the SNP-based score, and the combined risk scores.

We used logistic regression to fit the individual and combined risk and SNP-based scores—adjusted for age using the controls—to estimate risk associations, in terms of the OR per SD of the age-adjusted log 5-year predicted risk, while adjusting for age group due to the sampling strategy (32). Model calibration was assessed using the Hosmer–Lemeshow goodness-

of-fit test, which compares the expected and observed numbers of cases and controls within groups that were defined by deciles of risk. Discrimination between cases and controls was measured using the AUCs of the risk scores.

As in Mealiffe and colleagues (20), we categorized 5-year absolute risks as low risk (<1.5%), intermediate risk ( $\geq$ 1.5% and <2.0%), and high risk ( $\geq$ 2.0%) and constructed reclassification tables for each of the risk prediction models as a cross-tabulation of the classification of the risk score from the original model with the risk score from the combined model. The net reclassification improvement statistic was calculated as  $P(\text{up}|\text{case}) - P(\text{down}|\text{case}) + P(\text{down}|\text{control}) - P(\text{up}|\text{control})$ , where *up* refers to moving to a higher-risk category and *down* refers to moving to a lower-risk category.

Stata Release 13 (33) was used for all statistical analyses; all statistical tests were two sided, and *P* values less than 0.05 were considered nominally statistically significant.

## Results

Table 1 shows the characteristics of the study participants. For cases, the mean 5-year risk of breast cancer was 1.04% (SD 1.73%) from BOADICEA, 1.10% (SD 1.93%) from BRCAPRO, and 1.19% (SD 2.51%) from IBIS. For controls, the mean 5-year risk of breast cancer was 0.52% (SD 0.51%) from BOADICEA, 0.55% (SD 0.69%) from BRCAPRO, and 0.62% (SD 0.67%) from IBIS. BCRAT is only applicable to women aged 35 years or older, and for these women, the mean BCRAT 5-year risk of breast cancer was 0.76% (SD 0.34%) for cases and 0.66% (SD 0.31%) for controls. The mean SNP-based score was 1.30 (SD 0.61) for cases and 1.08 (SD 0.50) for controls. Supplementary Table S1 shows the genotype distributions and the minor allele

**Table 1.** Characteristics of cases and controls

	Cases N (%)	Controls N (%)
Age (years)		
20–34	182 (24.3)	125 (30.9)
35–39	285 (38.0)	142 (35.1)
40–44	128 (17.1)	77 (19.0)
45–49	155 (20.7)	61 (15.1)
Any first-degree relative with breast cancer		
No	661 (88.1)	379 (93.6)
Yes	89 (11.9)	26 (6.4)
Age at menarche (years)		
<12	148 (19.7)	66 (16.3)
12	148 (19.7)	98 (24.2)
13	231 (30.8)	113 (27.9)
$\geq$ 14	218 (29.1)	128 (31.6)
Missing	5 (0.7)	0 (0.0)
Age at first live birth (years)		
<20	50 (6.7)	31 (7.7)
20–24	162 (21.6)	86 (21.2)
25–29	225 (30.0)	109 (26.9)
$\geq$ 30	128 (17.1)	64 (15.8)
No live birth	185 (24.7)	115 (28.4)
ER status		
Negative	155 (20.7)	
Positive	261 (34.8)	
Missing	334 (44.5)	
PR status		
Negative	118 (15.7)	
Positive	298 (39.7)	
Missing	334 (44.5)	

frequencies for cases and controls for each of the 77 SNPs as well as the OR per allele (adjusted for age group).

The SNP-based score was not correlated with the risk scores of any of the risk prediction models: BOADICEA ( $r = 0.01$ ; 95% CI,  $-0.05$ – $0.07$ ;  $P = 0.7$ ), BRCAPRO ( $r = -0.02$ ; 95% CI,  $-0.08$ – $0.04$ ;  $P = 0.5$ ), BCRAT ( $r = 0.01$ ; 95% CI  $-0.06$ – $0.08$ ;  $P = 0.8$ ), and IBIS ( $r = 0.02$ ; 95% CI  $-0.04$ – $0.07$ ;  $P = 0.6$ ). For women aged 35 years or older, the BCRAT risk score was modestly correlated with the risk scores for BOADICEA ( $r = 0.32$ ; 95% CI,  $0.25$ – $0.38$ ;  $P < 0.001$ ), BRCAPRO ( $r = 0.21$ ; 95% CI,  $0.14$ – $0.27$ ;  $P < 0.001$ ), and IBIS ( $r = 0.29$ ; 95% CI,  $0.23$ – $0.35$ ;  $P < 0.001$ ). For all women, there were strong correlations between the risk scores for BOADICEA and BRCAPRO ( $r = 0.93$ ; 95% CI,  $0.92$ – $0.94$ ;  $P < 0.001$ ), BOADICEA and IBIS ( $r = 0.94$ ; 95% CI,  $0.93$ – $0.95$ ;  $P < 0.001$ ), and BRCAPRO and IBIS ( $r = 0.86$ ; 95% CI,  $0.84$ – $0.87$ ;  $P < 0.001$ ).

The 5-year risk predictions were all correlated with age: BOADICEA ( $r = 0.17$ ; 95% CI,  $0.11$ – $0.22$ ;  $P < 0.001$ ), BRCAPRO ( $r = 0.16$ ; 95% CI,  $0.10$ – $0.21$ ;  $P < 0.001$ ), BCRAT ( $r = 0.68$ ; 95% CI,  $0.64$ – $0.71$ ;  $P < 0.001$ ), and IBIS ( $r = 0.14$ ; 95% CI,  $0.08$ – $0.19$ ;  $P < 0.001$ ). The risk prediction models combined with the SNP-based score were all correlated with age: BOADICEA ( $r = 0.14$ ; 95% CI,  $0.08$ – $0.19$ ;  $P < 0.001$ ), BRCAPRO ( $r = 0.14$ ; 95% CI,  $0.09$ – $0.20$ ;  $P < 0.001$ ), BCRAT ( $r = 0.43$ ; 95% CI,  $0.38$ – $0.49$ ;  $P < 0.001$ ), and IBIS ( $r = 0.10$ ; 95% CI,  $0.04$ – $0.16$ ;  $P < 0.001$ ). The SNP-based score was not correlated with age ( $r = 0.02$ ; 95% CI,  $-0.036$ – $0.079$ ;  $P = 0.5$ ).

Table 2 shows the OR per age-adjusted SD of the risk factors, 95% CI, and  $\chi^2$  statistic for the Hosmer–Lemeshow goodness-of-fit test for each of the log-transformed risk scores, SNP-based risk score, and combined risk scores. The OR for each combined risk score was higher than both the SNP-based score and the model risk score alone. The OR was greatest for the combined BOADICEA and SNP-based score, followed by the combined BRCAPRO and SNP-based score. The OR was least for the IBIS risk score. Using the Hosmer–Lemeshow goodness-of-fit test, although there was evidence that the BOADICEA risk score alone did not give a good fit, there was no evidence that any of the combined risk scores gave a poor fit to the data.

Table 3 shows that, using the AUC criteria, for each of the four risk prediction models, the combined risk score gave greater discrimination than both the SNP-based score and the corresponding model risk score. The BOADICEA and SNP combined risk score had the highest AUC, followed by the combined BRCAPRO and SNP-based score, whereas the IBIS risk score had the lowest AUC. When including the SNP-based score compared with the risk prediction model alone, compared with the baseline of 0.5, the AUC was 25%, 27%, 21%, and 86% higher for the BOADICEA, BRCAPRO, BCRAT, and IBIS models, respectively. Figure 1 shows, for each of the risk prediction models, the receiver operating characteristic curves for the risk prediction model, the SNP-based score, and the combined risk score. The combined risk scores increased the AUC for BOADICEA ( $P = 0.01$ ), BRCAPRO ( $P = 0.004$ ), and IBIS ( $P < 0.001$ ), but not for BCRAT ( $P = 0.2$ ).

The AUC for the SNP-based score was higher ( $P = 0.01$ ) for ER-positive disease (AUC = 0.65; 95% CI,  $0.61$ – $0.69$ ) than for ER-negative disease (AUC = 0.56; 95% CI,  $0.51$ – $0.61$ ). Similarly, the AUC for the SNP-based score was higher ( $P = 0.02$ )

**Table 2.** Age group-adjusted ORs per age-adjusted SD, with corresponding 95% CIs, and the Hosmer–Lemeshow goodness-of-fit  $\chi^2$  for log-transformed risk scores

Log-transformed risk score	OR <sup>a</sup>	(95% CI)	P	$\chi^2$ <sup>b</sup>	P
SNP-based	1.46	(1.29–1.64)	$2 \times 10^{-16}$	11.4	0.2
BOADICEA	1.80	(1.57–2.07)	$3 \times 10^{-12}$	20.0	0.01
BOADICEA and SNP-based	1.96	(1.71–2.24)	$8 \times 10^{-11}$	9.9	0.3
BRCAPRO	1.75	(1.52–2.02)	$6 \times 10^{-7}$	14.4	0.1
BRCAPRO and SNP-based	1.89	(1.66–2.16)	$7 \times 10^{-10}$	8.9	0.4
BCRAT	1.67	(1.43–1.95)	$4 \times 10^{-23}$	7.7	0.5
BCRAT and SNP-based	1.80	(1.55–2.10)	$6 \times 10^{-21}$	7.0	0.5
IBIS	1.30	(1.16–1.45)	$3 \times 10^{-14}$	7.9	0.4
IBIS and SNP-based	1.52	(1.35–1.71)	$3 \times 10^{-12}$	7.2	0.5

<sup>a</sup>Adjusted for age group.<sup>b</sup>Hosmer–Lemeshow goodness-of-fit test using 10 groups (8 degrees of freedom).

for PR-positive disease (AUC = 0.64; 95% CI, 0.60–0.68) than for PR-negative disease (AUC = 0.56; 95% CI, 0.50–0.62). For the IBIS risk score, the AUC was marginally higher ( $P = 0.05$ ) for PR-negative disease (AUC = 0.64; 95% CI, 0.59–0.70) than for PR-positive disease (AUC = 0.57; 95% CI, 0.53–0.62). For the combined BCRAT and SNP-based score, the AUC was marginally higher ( $P = 0.05$ ) for ER-positive disease (AUC = 0.70; 95% CI, 0.65–0.75) than for ER-negative disease (AUC = 0.62; 95% CI, 0.56–0.68). For all other risk scores, there was no difference in AUC by ER or PR disease status (data not shown; all  $P > 0.1$ ).

For each of the four models, the risk scores and the combined risk scores were classified as low risk (1.5%), intermediate risk ( $\geq 1.5\%$  and  $< 2.0\%$ ), and high risk ( $\geq 2.0\%$ ), as shown in Table 4, which also shows the percentage of cases and controls moving into higher- and lower-risk categories. For each of the models, there was a statistically significant net reclassification improvement (all  $P < 0.05$ ).

## Discussion

For all four clinical risk prediction models, BOADICEA, BRCAPRO, BCRAT, and IBIS, the OR was higher for the combined risk scores than for the models alone, and the AUC was increased by at least 20% when the model risk score was combined with the SNP-based score. We found that the SNP-based score gave greater discrimination for predicting ER-positive and PR-positive disease, even when combined with the risk prediction scores.

The SNP-based score was not correlated with the risk factors derived from the risk prediction models. This might seem surprising given that the BOADICEA and BRCAPRO risk scores are based on family history and the 77 SNPs explain a non-trivial proportion of breast cancer risk overall (18), but the studies from which the 77 SNPs were discovered were dominated by later onset disease. The issue of SNPs and early-onset

disease, for which familial factors are stronger risk factors, remains relatively unexplored. New genome-wide association studies based on early-onset cases in the discovery phase could help rectify this situation and allow even better risk prediction models for young women.

Using SNPs might potentially be better able to improve risk prediction models than using other risk factors for breast cancer (2). For example, perhaps because of the correlation between the mammographic density risk factor and the risk factors involved in the BCRAT model, the inclusion of mammographic density resulted in only a modest improvement in AUC for BCRAT (34, 35).

For each of the risk prediction models, combining with the SNP-based score resulted in about 10% of cases moving into a higher-risk category and less than 2% of controls moving into a lower-risk category, which is similar to results from a much larger cohort study examining the effect of combining a risk score based on 67 SNPs with the IBIS model (25).

The odds ratio per adjusted standard deviation (OPERA) assesses the ability of a risk factor to discriminate between cases and controls on a population basis (32). It builds on the fact that the estimated risk gradient for a risk factor is its change when holding constant all other factors that have been controlled for. That is why we have fitted the age-adjusted risk scores. If the OR is the risk gradient on a given scale, then  $OPERA = OR^s$ , where  $s$  is the SD of the risk factor in the population after adjusting for all other factors, and  $s$  can be estimated using the control sample.

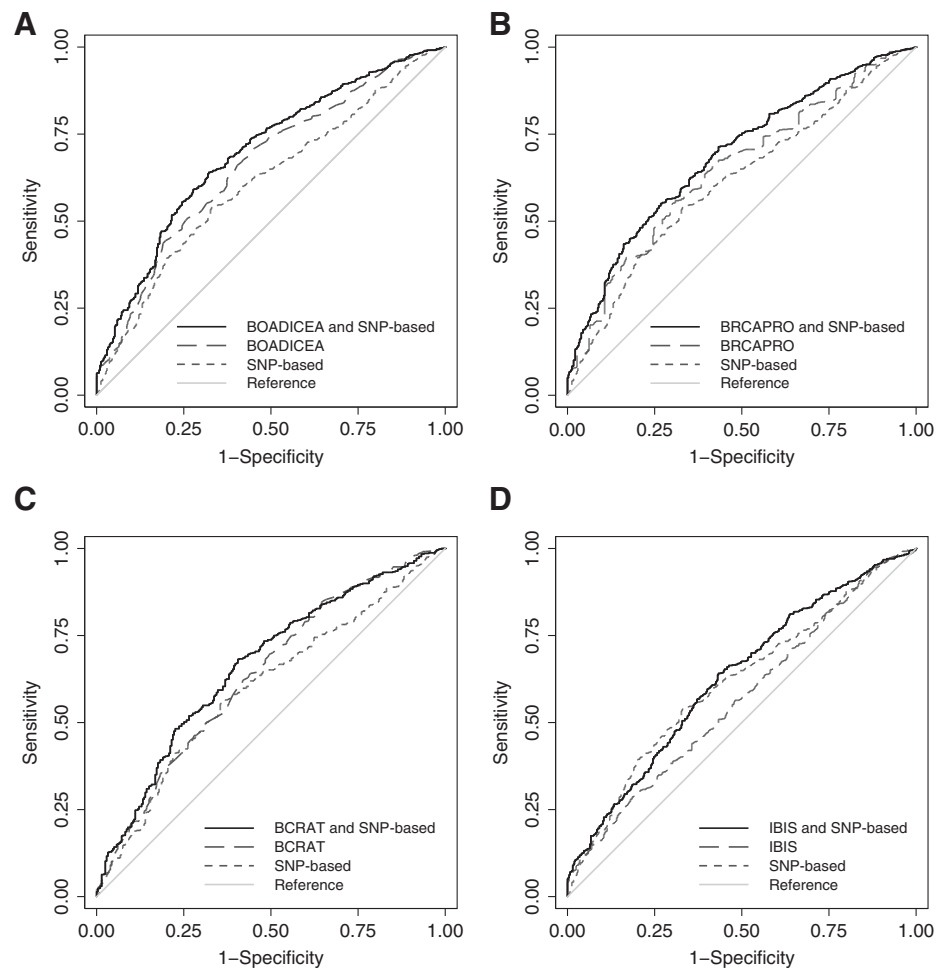
In this study, the SNP-based score did not vary with the age of controls, but the 5-year risk predictions were strongly associated with age when based on the models alone and when combined with the SNP-based score. Following the OPERA concept, we have presented the ORs in Table 2 in terms of the SDs of the age-adjusted risk scores, and this allows comparison of risk gradients across the different risk measures.

The estimated OR for the log SNP-based score alone was 1.46, which is similar to the estimate of 1.55 reported by Mavaddat and colleagues (18). Based on the OPERA concept, the combinations of the SNP-based score with the 5-year risk predictions from BOADICEA, BRCAPRO, and BCRAT are among the other strongest known risk factors for breast cancer; mammographic density adjusted for age and body mass index typically has an OPERA of about 1.4 (32), and epigenome-wide methylation has been reported to have an OPERA of 1.5 (36). Therefore, the new risk prediction scores that we have derived are now the strongest known means for differentiating women with and without breast cancer, at least for disease diagnosed before age 50 years. In interpreting our risk estimates, note

**Table 3.** AUC for the log-transformed risk scores

Log-transformed risk score	AUC <sup>a</sup>	(95% CI)
SNP-based	0.61	(0.58–0.65)
BOADICEA	0.66	(0.63–0.70)
BOADICEA and SNP-based	0.70	(0.67–0.73)
BRCAPRO	0.65	(0.62–0.68)
BRCAPRO and SNP-based	0.69	(0.66–0.72)
BCRAT	0.64	(0.60–0.68)
BCRAT and SNP-based	0.67	(0.63–0.70)
IBIS	0.57	(0.53–0.60)
IBIS and SNP-based	0.63	(0.59–0.66)

<sup>a</sup>Adjusted for age group.



**Figure 1.**

AUCs for the risk prediction model, SNP-based, and combined model and SNP-based risk scores for (A) BOADICEA, (B) BRCAPRO, (C) BCRAT, and (D) IBIS.

that about half of our cases were younger than 40 years at diagnosis. Familial risk is more important for young women, and for early onset disease, and as such, risk scores based on BOADICEA, BRCAPRO, and SNPs are expected to be more discriminatory.

The four breast cancer risk prediction models investigated here differ in their use of phenotypic information. BOADICEA (4, 5) and BRCAPRO (6–8) both use pedigree-based data, whereas IBIS (11) uses a combination of pedigrees and established risk factors and BCRAT (9, 10) uses established risk factors with no information about pedigree structure. IBIS (alone or combined with the SNP-based score) has a smaller OR than the other risk prediction models. This may be because IBIS was developed using data from predominately postmenopausal women and is intended for use with high-risk populations (37), whereas the other models are designed to be used for women unselected for risk factors, as in this study.

A potential weakness of our study was the missing values for the models' risk score calculations. However, given the key issue we are addressing is how much the addition of the SNP score increases the predictive ability of the models, this should not induce a substantive bias in our estimates of increased predictive performance. We used the approach of multiplying the SNP-based score by the risk factor based on a clinical model so as to be able to compare our findings with those of previous studies

(19, 20). We also fitted models along the traditional line in which the SNP-based score and the (virtually independent) risk factor are separate entities (data not shown). When we did this, the estimates for each factor were virtually unchanged. The log likelihoods of the two approaches were generally similar, especially for the BOADICEA and BRCAPRO models. Therefore, our conclusions about the improvements in prediction are robust to the analytic approach.

These risk prediction models are likely to perform better when more SNPs and risk-associated genes are discovered. There could be up to 1,000 more independent SNPs that are associated with risk of breast cancer (31) that could be included in risk prediction models. Analytic approaches that extract more information from genotyping data by, for example, considering pathways or SNP–SNP interactions, might produce better SNP-based risk prediction scores.

Given the multiplicative risk model that underlies epidemiology and now SNP-based genetic risk scores, the distribution of risk for women in the population would appear to be, at least to a good approximation, log normal. To explain the increased risk associated with having an affected family member, it must have a large variance such that the risk for women in the upper quartile is at least 20 times of that for women in the lower quartile (38). This study has shown that, by using risk models based on SNPs and family history, a substantial proportion of

**Table 4.** Predicted 5-year breast cancer risk for cases and controls according to the risk models and their corresponding combined risk scores

Risk scores	Combined risk score										NRI (95% CI)		
	Cases					Controls							
	<1.5%	≥1.5% and <2.0%	≥2.0%	Up	Down	<1.5%	≥1.5% and <2.0%	≥2.0%	Up	Down			
BOADICEA				9.1%	1.3%						4.7%	1.0%	0.040 (0.007–0.073)
<1.5%	614	33	24			377	13	4					
≥1.5% and <2.0%	7	3	11			2	3	2					
≥2.0%	1	2	55			1	1	2					
BRCAPRO				10.7%	0%						4.7%	0.2%	0.063 (0.030–0.094)
<1.5%	616	50	30			382	15	4					
≥1.5% and <2.0%	0	0	0			1	0	0					
≥2.0%	0	0	52			0	0	3					
BCRAT				14.1%	1.4%						6.8%	0.7%	0.066 (0.019–0.110)
<1.5%	471	45	24			256	13	4					
≥1.5% and <2.0%	8	7	11			2	3	2					
≥2.0%	0	0	2			0	0	0					
IBIS				10.7%	1.1%						6.2%	1.7%	0.052 (0.015–0.088)
<1.5%	595	44	23			363	18	4					
≥1.5% and <2.0%	5	4	13			4	2	3					
≥2.0%	2	1	63			1	2	8					

NOTE: Up is a change to a higher-risk category, and down is a change to a lower-risk category from including the SNP-based score. Abbreviation: NRI, net reclassification improvement.

this variance is being explained and there is the ability to differentiate between women at low risk (much less than population average risk) and those at increased risk across a very wide range. This opens up the possibility of precision prevention and screening and enables genomic information to substantially lower the impact of breast cancer (39).

In conclusion, we have quantified the extent to which breast cancer risk prediction for women under the age of 50 years is improved by including a risk score based on 77 known susceptibility SNPs. Our estimates of the performance of risk prediction models that combine clinical and genetic information could be used to inform targeted screening and prevention.

#### Disclosure of Potential Conflicts of Interest

G.S. Dite reports receiving commercial research support from Genetic Technologies Ltd. R. Allman is Scientific Director at Genetic Technologies Ltd. No potential conflicts of interest were disclosed by the other authors.

#### Disclaimer

The content of this article does not necessarily reflect the views or policies of the NCI or any of the collaborating centers of the Breast Cancer Family Registry. The mention of trade names, commercial products, or organizations does not imply endorsement by the US Government or the Breast Cancer Family Registry.

#### Authors' Contributions

**Conception and design:** G.S. Dite, R.J. MacInnis, R. Allman, R.L. Milne, K.-A. Phillips, G.G. Giles, M.C. Southey, J.L. Hopper  
**Development of methodology:** G.S. Dite, R.J. MacInnis, R. Allman, H. Tsimiklis, M.C. Southey, J.L. Hopper  
**Acquisition of data (provided animals, acquired and managed patients, provided facilities, etc.):** C. Apicella, H. Tsimiklis, K.-A. Phillips, G.G. Giles, M.C. Southey, J.L. Hopper  
**Analysis and interpretation of data (e.g., statistical analysis, biostatistics, computational analysis):** G.S. Dite, R.J. MacInnis, A. Bickerstaffe, J.G. Dowty, R.L. Milne, K.-A. Phillips, M.B. Terry, M.C. Southey, J.L. Hopper  
**Writing, review, and/or revision of the manuscript:** G.S. Dite, R.J. MacInnis, A. Bickerstaffe, J.G. Dowty, R. Allman, C. Apicella, R.L. Milne, K.-A. Phillips, G.G. Giles, M.C. Southey, J.L. Hopper

#### References

1. Eccles SA, Aboagye EO, Ali S, Anderson AS, Armes J, Berditchevski F, et al. Critical research gaps and translational priorities for the success-

**Administrative, technical, or material support (i.e., reporting or organizing data, constructing databases):** G.S. Dite, A. Bickerstaffe, R. Allman, J.L. Hopper  
**Study supervision:** R. Allman, K.-A. Phillips, M.C. Southey, J.L. Hopper

#### Grant Support

J.L. Hopper and G.G. Giles received support for the ABCFR from the National Health and Medical Research Council, the New South Wales Cancer Council, the Victorian Health Promotion Foundation, the Victorian Breast Cancer Research Consortium, Cancer Australia, and the National Breast Cancer Foundation. J.L. Hopper, M.C. Southey, G.G. Giles, G.S. Dite, R.L. Milne, and C. Apicella received support for the ABCFR from the National Cancer Institute, NIH, USA under RFA CA-06-503, R01 CA159868, and UM1 CA164920 and through cooperative agreements with members of the Breast Cancer Family Registry: The University of Melbourne, Australia (U01 CA69638); Fox Chase Cancer Center, USA (U01 CA69631); Huntsman Cancer Institute, USA (U01 CA69446); Colombia University, USA (U01 CA69398); Cancer Prevention Institute of California, USA (U01 CA69417); and Cancer Care Ontario, Canada (U01 CA69467).

M.C. Southey received support for the iCOGS infrastructure from the European Community's Seventh Framework Programme under grant agreement number 223175 (HEALTH-F2-2009-223175; COGS), Cancer Research UK (C1287/A10118, C1287/A 10710, C12292/A11174, C1281/A12014, C5047/A8384, C5047/A15007, and C5047/A10692), the NIH (CA128978) and Post-cancer GWAS initiative (1U19 CA148537, 1U19 CA148065, and 1U19 CA148112—the GAME-ON initiative), the Department of Defence (W81XWH-10-1-0341), the Canadian Institutes of Health Research (CIHR) for the CIHR Team in Familial Risks of Breast Cancer, Komen Foundation for the Cure, the Breast Cancer Research Foundation, and the Ovarian Cancer Research Fund.

G.S. Dite was in part supported by funding from Genetic Technologies Ltd. K.-A. Phillips is an Australian National Breast Cancer Foundation Fellow. J.L. Hopper is a Senior Principal Research Fellow of the National Health and Medical Research Council, Australia. M.C. Southey is a Senior Research Fellow of the National Health and Medical Research Council, Australia.

The costs of publication of this article were defrayed in part by the payment of page charges. This article must therefore be hereby marked *advertisement* in accordance with 18 U.S.C. Section 1734 solely to indicate this fact.

Received August 4, 2015; revised December 9, 2015; accepted December 11, 2015; published OnlineFirst December 16, 2015.

ful prevention and treatment of breast cancer. *Breast Cancer Res* 2013;15:R92.

2. Howell A, Anderson AS, Clarke RB, Duffy SW, Evans DG, Garcia-Closas M, et al. Risk determination and prevention of breast cancer. *Breast Cancer Res* 2014;16:466.
3. Quante AS, Whittemore AS, Shriver T, Hopper JL, Strauch K, Terry MB. Practical problems with clinical guidelines for breast cancer prevention based on remaining lifetime risk. *J Natl Cancer Inst* 2015;107.
4. Antoniou AC, Cunningham AP, Peto J, Evans DG, Lalloo F, Narod SA, et al. The BOADICEA model of genetic susceptibility to breast and ovarian cancers: updates and extensions. *Br J Cancer* 2008;98:1457-66.
5. Antoniou AC, Pharoah PPD, Smith P, Easton DF. The BOADICEA model of genetic susceptibility to breast and ovarian cancer. *Br J Cancer* 2004;91:1580-90.
6. Chen S, Wang W, Broman KW, Katki HA, Parmigiani G. BayesMendel: an R environment for Mendelian risk prediction. *Stat Appl Genet Mol Biol* 2004;3:Article 21.
7. Mazzola E, Chipman J, Cheng SC, Parmigiani G. Recent BRCAPro upgrades significantly improve calibration. *Cancer Epidemiol Biomarkers Prev* 2014;23:1689-95.
8. Parmigiani G, Berry D, Aguilar O. Determining carrier probabilities for breast cancer-susceptibility genes BRCA1 and BRCA2. *Am J Hum Genet* 1998;62:145-58.
9. Costantino JP, Gail MH, Pee D, Anderson S, Redmond CK, Benichou J, et al. Validation studies for models projecting the risk of invasive and total breast cancer incidence. *J Natl Cancer Inst* 1999;91:1541-8.
10. Gail MH, Brinton LA, Byar DP, Corle DK, Green SB, Schairer C, et al. Projecting individualized probabilities of developing breast cancer for white females who are being examined annually. *J Natl Cancer Inst* 1989;81:1879-86.
11. Tyrer J, Duffy SW, Cuzick J. A breast cancer prediction model incorporating familial and personal risk factors. *Stat Med* 2004;23:1111-30.
12. MacInnis RJ, Bickerstaffe A, Apicella C, Dite GS, Dowty JG, Aujard K, et al. Prospective validation of the breast cancer risk prediction model BOADICEA and a batch-mode version BOADICEACentre. *Br J Cancer* 2013;109:1296-301.
13. Stahlbom AK, Johansson H, Liljegen A, von Wachenfeldt A, Arver B. Evaluation of the BOADICEA risk assessment model in women with a family history of breast cancer. *Fam Cancer* 2012;11:33-40.
14. Laitman Y, Simeonov M, Keinan-Boker L, Liphshitz I, Friedman E. Breast cancer risk prediction accuracy in Jewish Israeli high-risk women using the BOADICEA and IBIS risk models. *Genet Res* 2013;95:174-7.
15. Amir E, Evans DG, Shenton A, Lalloo F, Moran A, Boggis C, et al. Evaluation of breast cancer risk assessment packages in the family history evaluation and screening programme. *J Med Genet* 2003;40:807-14.
16. Quante AS, Whittemore AS, Shriver T, Strauch K, Terry MB. Breast cancer risk assessment across the risk continuum: genetic and nongenetic risk factors contributing to differential model performance. *Breast Cancer Res* 2012;14:R144.
17. Pepe MS, Janes HE. Gauging the performance of SNPs, biomarkers, and clinical factors for predicting risk of breast cancer. *J Natl Cancer Inst* 2008;100:978-9.
18. Mavaddat N, Pharoah PD, Michailidou K, Tyrer J, Brook MN, Bolla MK, et al. Prediction of breast cancer risk based on profiling with common genetic variants. *J Natl Cancer Inst* 2015;107:djv036.
19. Dite GS, Mahmoodi M, Bickerstaffe A, Hammet F, Macinnis RJ, Tsimiklis H, et al. Using SNP genotypes to improve the discrimination of a simple breast cancer risk prediction model. *Breast Cancer Res Treat* 2013;139:887-96.
20. Mealfhe ME, Stokowski RP, Rhees BK, Prentice RL, Pettinger M, Hinds DA. Assessment of clinical validity of a breast cancer risk model combining genetic and clinical information. *J Natl Cancer Inst* 2010;102:1618-27.
21. Gail MH. Discriminatory accuracy from single-nucleotide polymorphisms in models to predict breast cancer risk. *J Natl Cancer Inst* 2008;100:1037-41.
22. Wacholder S, Hartge P, Prentice R, Garcia-Closas M, Feigelson HS, Diver WR, et al. Performance of common genetic variants in breast-cancer risk models. *N Engl J Med* 2010;362:986-93.
23. Gail MH. Value of adding single-nucleotide polymorphism genotypes to a breast cancer risk model. *J Natl Cancer Inst* 2009;101:959-63.
24. Comen E, Balistreri L, Gonen M, Dutra-Clarke A, Fazio M, Vijai J, et al. Discriminatory accuracy and potential clinical utility of genomic profiling for breast cancer risk in BRCA-negative women. *Breast Cancer Res Treat* 2011;127:479-87.
25. Brentnall AR, Evans DG, Cuzick J. Value of phenotypic and single-nucleotide polymorphism panel markers in predicting the risk of breast cancer. *J Genet Syndr Gene Ther* 2013;4:202.
26. Brentnall AR, Evans DG, Cuzick J. Distribution of breast cancer risk from SNPs and classical risk factors in women of routine screening age in the UK. *Br J Cancer* 2014;110:827-8.
27. Vachon CM, Pankratz VS, Scott CG, Haeberle L, Ziv E, Jensen MR, et al. The contributions of breast density and common genetic variation to breast cancer risk. *J Natl Cancer Inst* 2015;107.
28. McCredie MR, Dite GS, Giles GG, Hopper JL. Breast cancer in Australian women under the age of 40. *Cancer Causes Control* 1998;9:189-98.
29. Dite GS, Jenkins MA, Southey MC, Hocking JS, Giles GG, McCredie MR, et al. Familial risks, early-onset breast cancer, and BRCA1 and BRCA2 germline mutations. *J Natl Cancer Inst* 2003;95:448-57.
30. John EM, Hopper JL, Beck JC, Knight JA, Neuhausen SL, Senie RT, et al. The Breast Cancer Family Registry: an infrastructure for cooperative multinational, interdisciplinary and translational studies of the genetic epidemiology of breast cancer. *Breast Cancer Res* 2004;6:R375-89.
31. Michailidou K, Hall P, Gonzalez-Neira A, Ghoussaini M, Dennis J, Milne RL, et al. Large-scale genotyping identifies 41 new loci associated with breast cancer risk. *Nat Genet* 2013;45:353-61.
32. Hopper JL. Odds PER Adjusted standard deviation (OPERA): Comparing strengths of associations for risk factors measured on different scales, and across diseases and populations. *Am J Epidemiol* 2015;182:863-7.
33. StataCorp. Stata statistical software, release 13. College Station, TX: Stata-Corp LP; 2013.
34. Barlow WE, White E, Ballard-Barbash R, Vacek PM, Titus-Ernstoff L, Carney PA, et al. Prospective breast cancer risk prediction model for women undergoing screening mammography. *J Natl Cancer Inst* 2006;98:1204-14.
35. Chen J, Pee D, Ayyagari R, Graubard B, Schairer C, Byrne C, et al. Projecting absolute invasive breast cancer risk in white women with a model that includes mammographic density. *J Natl Cancer Inst* 2006;98:1215-26.
36. Severi G, Southey MC, English DR, Jung CH, Lonie A, McLean C, et al. Epigenome-wide methylation in DNA from peripheral blood as a marker of risk for breast cancer. *Breast Cancer Res Treat* 2014;148:665-73.
37. Amir E, Freedman OC, Seruga B, Evans DG. Assessing women at high risk of breast cancer: a review of risk assessment models. *J Natl Cancer Inst* 2010;102:680-91.
38. Hopper JL, Carlin JB. Familial aggregation of a disease consequent upon correlation between relatives in a risk factor measured on a continuous scale. *Am J Epidemiol* 1992;136:1138-47.
39. Hopper JL. Disease-specific prospective family study cohorts enriched for familial risk. *Epidemiol Perspect Innov* 2011;8:2.