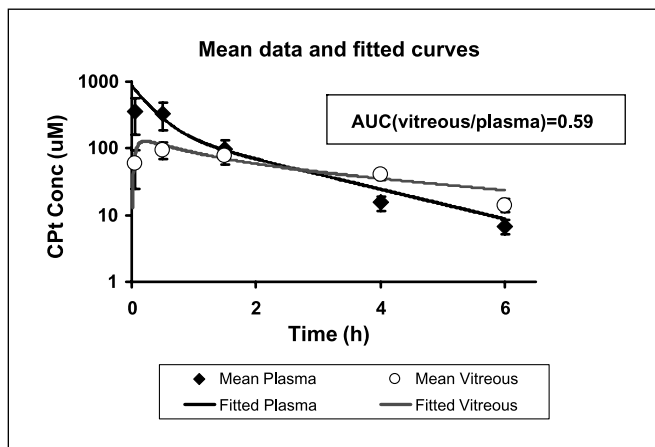


Correction: Article on Topotecan Combination Chemotherapy in Retinoblastoma

In the article on topotecan combination chemotherapy in retinoblastoma published in the October 15, 2005 issue of *Clinical Cancer Research*, the data for Fig. 3B were incorrectly represented. In this figure, the authors presented plasma and vitreous carboplatin concentration-time data. The range of values on the y axis in Fig. 3B was incorrectly represented as from 0.1 to 1 μM , but should have been from 1 to 1000 μM . The published figure underestimated the actual carboplatin exposure in plasma and vitreous of rats. The corrected figure shows that carboplatin vitreal concentrations after a 70 mg/kg intravenous dosage are potentially active as defined by the LC_{50} (4 μM) for the Y79 retinoblastoma cell line. The correct figure appears here.



Laurie NA, Gray JK, Zhang J, et al. Topotecan combination chemotherapy in two new rodent models of retinoblastoma. *Clin Cancer Res* 2005;11:7569–78.