

## Developing a Common Language for Tumor Response to Immunotherapy: Immune-Related Response Criteria Using Unidimensional Measurements

Mizuki Nishino<sup>1</sup>, Anita Giobbie-Hurder<sup>3</sup>, Maria Gargano<sup>2</sup>, Margaret Suda<sup>2</sup>, Nikhil H. Ramaiya<sup>1</sup>, and F. Stephen Hodi<sup>2</sup>

### Abstract

**Purpose:** Immune-related response criteria (irRC) was developed to adequately assess tumor response to immunotherapy. The irRC are based on bidimensional measurements, as opposed to unidimensional measurements defined by Response Evaluation Criteria in Solid Tumors, which has been widely used in solid tumors. We aimed to compare response assessment by bidimensional versus unidimensional irRC in patients with advanced melanoma treated with ipilimumab.

**Experimental Design:** Fifty-seven patients with advanced melanoma treated with ipilimumab in a phase II, expanded access trial were studied. Bidimensional tumor measurement records prospectively conducted during the trial were reviewed to generate a second set of measurements using unidimensional, longest diameter measurements. The percent changes of measurements at follow-up, best overall response, and time-to-progression (TTP) were compared between bidimensional and unidimensional irRC. Interobserver variability for bidimensional and unidimensional measurements was assessed in 25 randomly selected patients.

**Results:** The percent changes at follow-up scans were highly concordant between the 2 criteria (Spearman  $r$ : 0.953–0.965, first to fourth follow-up). The best immune-related response was highly concordant between the 2 criteria ( $\kappa_w = 0.881$ ). TTP was similar between the bidimensional and unidimensional assessments (progression-free at 6 months: 70% vs. 81%, respectively). The unidimensional measurements were more reproducible than bidimensional measurements, with the 95% limits of agreement of (–16.1%, 5.8%) versus (–31.3%, 19.7%), respectively.

**Conclusion:** irRC using the unidimensional measurements provided highly concordant response assessment compared with the bidimensional irRC, with less measurement variability. The use of unidimensional irRC is proposed to assess response to immunotherapy in solid tumors, given its simplicity, higher reproducibility, and high concordance with the bidimensional irRC. *Clin Cancer Res*; 19(14); 3936–43. ©2013 AACR.

### Introduction

The recent increasing understanding of regulatory pathways of the immune response to cancer has led to the development and application of immunotherapeutic agents. Ipilimumab is a fully human monoclonal antibody and blocks the binding of CTLA-4 to its ligands (1–5). Ipilimumab has shown to significantly improve overall

survival in patients with metastatic melanoma in a randomized phase III trial and has been approved for treatment of advanced melanoma (1). Ipilimumab is currently tested and has shown efficacy in other solid tumors including non-small cell lung cancer (6).

Immunotherapeutic agents such as ipilimumab exert the antitumor activity by augmenting activation and proliferation of T cells, which leads to tumor infiltration by T cells and tumor regression rather than direct cytotoxic effects (1–5). Clinical observations of patients with advanced melanoma treated with ipilimumab suggested that conventional response assessment criteria such as Response Evaluation Criteria in Solid Tumors (RECIST) and WHO criteria are not sufficient to fully characterize patterns of tumor response to immunotherapy because tumors treated with immunotherapeutic agents may show additional response patterns that are not described in these conventional criteria (7, 8). Given the background, a novel set of criteria developed to capture additional response patterns was proposed as

**Authors' Affiliations:** Departments of <sup>1</sup>Radiology and <sup>2</sup>Medical Oncology and Department of Medicine, Dana-Farber Cancer Institute and Brigham and Women's Hospital; and <sup>3</sup>Department of Biostatistics and Computational Biology, Dana-Farber Cancer Institute, Boston, Massachusetts

**Note:** N.H. Ramaiya and F.S. Hodi contributed equally to this work.

**Corresponding Author:** Mizuki Nishino, Department of Radiology, Brigham and Women's Hospital and Dana-Farber Cancer Institute, 450 Brookline Ave., Boston, MA 02215. Phone: 617-582-7163; Fax: 617-582-8574; E-mail: Mizuki\_Nishino@dfci.harvard.edu

**doi:** 10.1158/1078-0432.CCR-13-0895

©2013 American Association for Cancer Research.

### Translational Relevance

Given the increasing evidence of the benefits of immunotherapeutic agents in patients with melanoma and other solid malignancies, unifying the strategy to assess response to immunotherapy is essential to provide a "common language" to describe treatment results and provide basis for further advances in cancer immunotherapy. By systematically investigating the tumor measurements record during a prospective phase II trial of ipilimumab in patients with advanced melanoma, the present study showed that immune-related response criteria (irRC) using unidimensional, longest diameter measurements provide highly concordant response assessment with better reproducibility compared with the irRC using bidimensional measurements as originally proposed. The study provides a basis for the direction toward unidimensional irRC, which is simple and practical, and provides response assessment that can be directly compared with the results from other trials based on unidimensional Response Evaluation Criteria in Solid Tumors–based assessment in the past decade.

"immune-related response criteria (irRC)" in 2009, based on the discussion by 200 oncologists, immunotherapists, and regulatory experts (7). The irRC were evaluated in large, multinational studies, involving 487 patients with advanced melanoma who received ipilimumab (7). Recent phase II trial of ipilimumab in non-small cell lung cancer (NSCLC) used irRC to assess response and define endpoints (6).

The irRC published in 2009 was based on the modified WHO criteria and use bidimensional tumor measurements of target lesions, which is obtained by multiplying the longest diameter and the longest perpendicular diameter of each lesion (7). However, most trials of solid tumors in the past decade have used RECIST guidelines, which uses unidimensional, longest diameter measurements (9–11). To directly compare the efficacy and effectiveness of anti-cancer agents, unifying the measurement method in tumor response assessment is of great importance. In addition, multiple reports have shown that unidimensional measurements are more reproducible and therefore have less misclassification rate for response assessment compared with bidimensional measurements (12–14).

As emphasized in the publication of WHO criteria by Miller and colleagues in 1981 in *Cancer*, tumor response criteria were developed due to the necessity of a "common language" to describe the results of cancer treatment and provide basis for advances in cancer therapy (15). Given the promising efficacy of newer immunotherapeutic agents, such as anti-PD-1 antibody in melanoma as well as in other solid tumors including NSCLCs and renal cell carcinoma (RCC), it is necessary to develop a "common language" for

immune-related tumor response assessment to further move the field forward.

In the present study, we hypothesized that the irRC using unidimensional measurements can provide response assessment concordant with the original irRC with bidimensional measurements. We also hypothesized that the unidimensional measurements has less measurement variability than the bidimensional measurements. If these hypotheses are proven, we propose to use unidimensional, longest diameter measurements in irRC to assess efficacy and effectiveness of immunotherapeutic agents, which are simpler and more reproducible, and provide response assessment that can be directly compared with the results from trials in the past decade.

### Patients and Methods

#### Patients

The study population included 57 patients (36 men and 21 women; mean age, 64 years; range, 39–87 years), with advanced melanoma treated with ipilimumab at Dana-Farber Cancer Institute (Boston, MA) in a phase II, multi-center treatment protocol for expanded access of ipilimumab monotherapy in subjects with histologically confirmed unresectable stage III or IV melanoma, whose prospective tumor measurement tables at baseline and at least one follow-up computed tomographic (CT) scan were available for review. In this expanded access program, the dose of ipilimumab was 10 mg/kg initially and then changed to 3mg/kg. The protocol was approved by the Dana-Farber/Harvard Cancer Center Institutional Review Board, and all patients provided written informed consent.

#### Tumor response assessment

Tumor measurements were conducted prospectively during the trial by staff radiologists at Dana-Farber Cancer Institute at the baseline and at every follow-up CT. Follow-up scans were conducted at every 12 weeks in principle, whereas shorter interval follow-up (i.e., 4 weeks) were conducted if necessary for the purposes such as confirmation of response or progression. Tumor measurement records included the number of the treatment cycle, the date of assessment, the method of imaging, the target lesion description and bidimensional measurements, the sum of the target lesion measurements (and new lesions if any), descriptions of non-target lesions, and the presence or absence of new lesions with their bidimensional measurements if present. These records were retrospectively reviewed by a board-certified radiologist (M. Nishino) with 8 years of experience in oncologic imaging, to generate a second set of tumor measurements using the unidimensional, longest diameter measurements (7, 16).

The overall approach for measurements and response assessment is summarized in Table 1. In brief, all the tumor measurements in each patient were reviewed and the longest diameter of each target lesion was recorded at baseline and all follow-up studies. Measurable lesions were defined as  $\geq 10$  mm in the longest diameter as in RECIST (9–11), as opposed to  $\geq 5 \times 5$  mm<sup>2</sup> in WHO/irRC (7, 15). The longest

**Table 1.** Summary of measurement and response assessment approaches for bidimensional and unidimensional assessment based on irRC

	<b>Bidimensional assessment (the original irRC (7))</b>	<b>Unidimensional assessment</b>
Measurable lesions	$\geq 5 \times 5$ mm <sup>2</sup> by bidimensional measurements	$\geq 10$ mm in the longest diameter
Measurement of each lesion	The longest diameter $\times$ the longest perpendicular diameter (cm <sup>2</sup> )	The longest diameter (cm)
The sum of the measurements	The sum of the bidimensional measurements of all target lesions and new lesions if any	The sum of the longest diameters of all target lesions and new lesions if any
Response assessment	PD: $\geq 25\%$ increase from the nadir PR: $\geq 50\%$ decrease from baseline CR: Disappearance of all lesions	PD: $\geq 20\%$ increase from the nadir PR: $\geq 30\%$ decrease from baseline CR: Disappearance of all lesions
New lesions	The presence of new lesion(s) does not define progression. The measurements of the new lesion(s) are included in the sum of the measurements.	
Confirmation	Confirmation by 2 consecutive observations not less than 4 weeks apart was required for CR, PR, and PD	

diameters of new lesions, if any, were also measured, according to irRC. The sum of the longest diameters of all target lesions (and new lesions, if any) was calculated at baseline and each follow-up study, and the percent changes were calculated.

Response assessment was assigned at each follow-up for bidimensional and unidimensional measurements. For bidimensional measurements, the cutoff values defined by irRC were used ( $\geq 25\%$  increase from the nadir for progression,  $\geq 50\%$  decrease from baseline for partial response (PR), and disappearance of all lesions for complete remission; ref. 7). For unidimensional measurements, the cutoff values by RECIST ( $\geq 20\%$  increase from the nadir for progression,  $\geq 30\%$  decrease from baseline for PR, and disappearance of all lesions for complete remission) were used. Confirmation by 2 consecutive observations not less than 4 weeks apart was required for complete response (CR), PR, and progressive disease (PD) for both assessments, as defined by irRC to assign best response for each patient (Table 1). The unidimensional immune-related assessment in the present study was carefully designed so that it maintains important features of irRC such as inclusion of new lesion measurements and confirmation of progression while using the longest diameter measurements as described in RECIST.

#### Reproducibility of bidimensional versus unidimensional measurements

To assess reproducibility of measurements, a board-certified radiologist (M. Nishino) conducted tumor measurements of target lesions on baseline scans in a randomly selected 25 patients among the study population, whose baseline tumor measurements during trials were conducted by staff radiologists other than the radiologist (M. Nishino). The random selection of 25 patients was made by generating a random sequence of 57 integers from 1 to 57, which corresponded to the study identification numbers of the 57 patients in the study cohort, using a random number generator (www.random.org).

The first 25 numbers of the sequence were used to select 25 patients with the corresponding study identification numbers. Just like the measurements during the trial, the radiologist conducted bidimensional measurements of the target lesions that had been already selected during trials (16). Tumor table templates indicating the location, description, and series and image numbers of target lesions (such as "segment IV liver lesion, series 2, image 25") for the baseline scans were provided to the radiologists, who was not allowed to access the original measurements during trial. Measurements were conducted using a measurement tool on PACS workstation (Centricity, GE Healthcare), which was also used for the original measurements during the trials. The sum of the bidimensional and unidimensional measurements was recorded for each patient.

#### Statistical analysis

The percentage change on follow-up scans by the bidimensional tumor measurements record versus the unidimensional measurements record was compared using Spearman correlation. A weighted kappa analysis was conducted to assess the level of agreement between best responses by the bidimensional versus unidimensional measurements using Fleiss–Cohen quadratic weights. Quadratic weights were chosen because a difference between PR and stable disease (SD) is conventionally less important than a difference between SD and PD; patients remain on trial (and on therapy) with PR or SD, whereas they are removed from trial (and often off the therapy as well) with PD. Agreement between the 2 assessments was categorized as poor ( $\kappa_w < 0$ ), slight ( $\kappa_w = 0-0.20$ ), fair ( $\kappa_w = 0.21-0.40$ ), moderate ( $\kappa_w = 0.41-0.60$ ), substantial ( $\kappa_w = 0.61-0.80$ ), and almost perfect ( $\kappa_w > 0.80$ ). Response assessment results at the first, second, and third follow-up scans by 2 measurements were also compared by weighted kappa analysis. Time to progression (TTP) according to 2 measurement records was estimated using the Kaplan–Meier method (17).

Interobserver variability was assessed using concordance correlation coefficients (CCC), mean relative difference (%), and 95% limits of agreement (%) for the unidimensional, longest diameter (cm) and the bidimensional measurements. CCC was used to assess reproducibility of 2 measurements, as described previously (13–14). Assuming 2 measurements have mean  $u_1$  and  $u_2$ , with variance  $\sigma_1^2$  and  $\sigma_2^2$  and covariance  $\sigma_{12}$  and  $CCC = (2\sigma_{12})/(\sigma_1^2 + \sigma_2^2 + (u_1 - u_2)^2)$ . CCCs are composed of a measure of precision (how far each pair of measurements deviates from the best-fit line through the data) and a measure of accuracy (the distance between the best-fit line and the 45 line through the origin). A value of 1 indicates perfect agreement and  $-1$  indicates perfect reversed agreement (18). Agreement in the 2 measurements was shown visually using Bland–Altman plots with 95% limits of agreement and the average relative difference, computing the mean relative difference (%) between the 2 measurements ( $100 \times (M_1 - M_2)/M_1$ ;  $M_1$  = measurements during trial,  $M_2$  = measurements by the radiologist in this study; ref. 14). All  $P$  values are based on a 2-sided hypothesis.  $P < 0.05$  was considered to be significant.

## Results

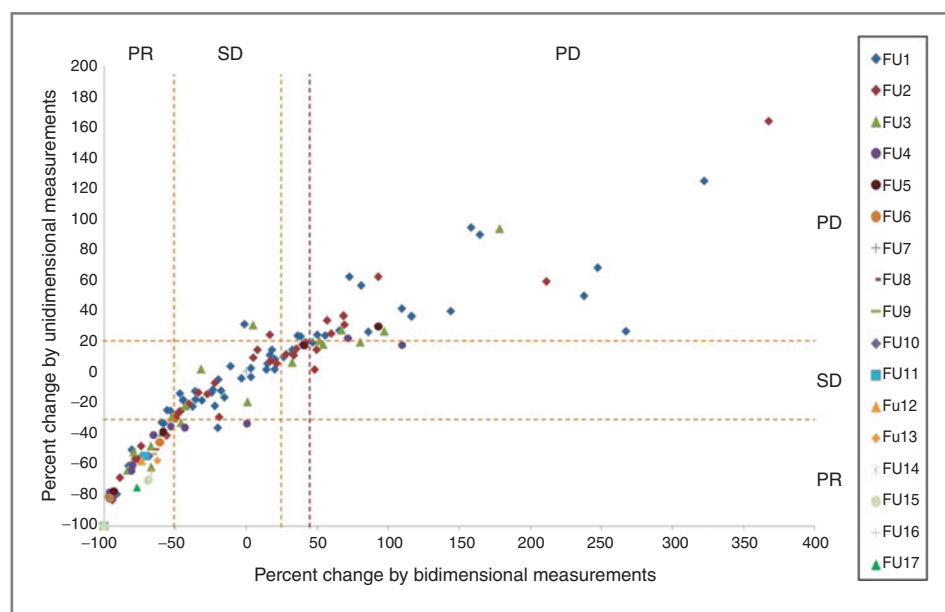
### Bidimensional versus unidimensional tumor response assessment

Figure 1 shows the percent changes according to bidimensional and unidimensional measurements at each follow-up scan, including the 1st to 17th follow-up

(f/u) scans. The percent changes by 2 measurements were highly concordant, with Spearman correlation coefficient of 0.959 (95%CI, 0.93–0.98) for the 1st f/u ( $n = 57$ ); 0.963 (0.92–0.98) for the 2nd f/u ( $n = 33$ ); 0.953 (0.88–0.98) for the 3rd f/u ( $n = 21$ ); and 0.965 (0.87–0.99) for the 4th f/u ( $n = 12$ ). The number of patients were too small ( $\leq 5$ ) after the 4th follow-up to obtain a reliable estimate. Response assessment results by 2 measurements on the first 3 follow-up scans had almost perfect agreement, with  $\kappa_w$  values of 0.844 for the 1st ( $n = 57$ ), 0.830 for the 2nd ( $n = 33$ ), and 0.861 ( $n = 21$ ) for the 3rd follow-up (Figs. 1 and 2).

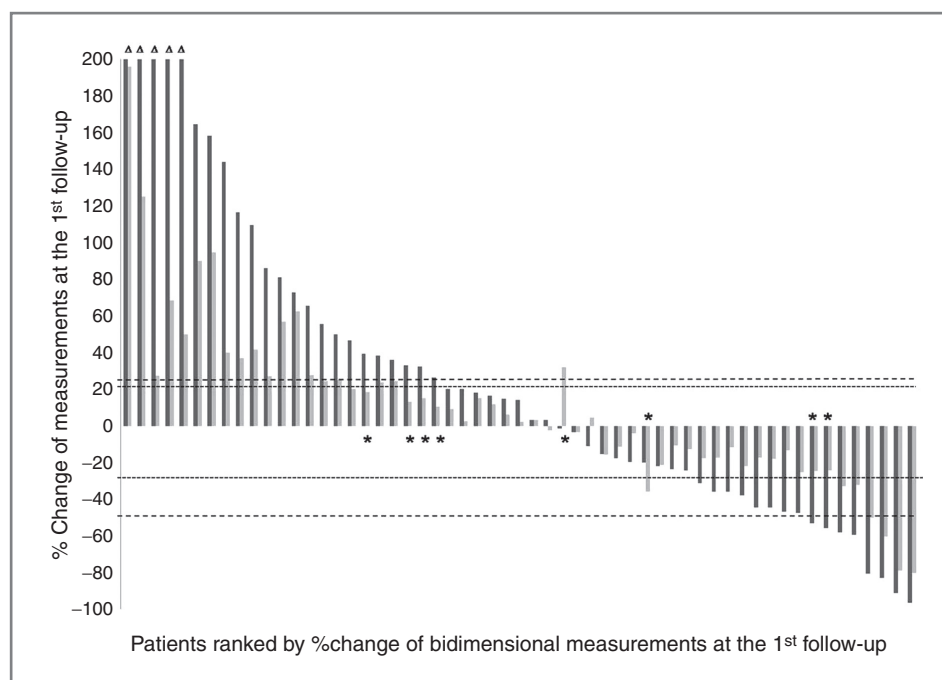
The best immune-related response according to two measurements showed almost perfect agreement between the 2 criteria ( $\kappa_w = 0.881$ , Table 2). Best response assessments by 2 criteria were identical in 53 of 57 patients (93%). The remaining 4 patients (7.0%) had discordant results, including 3 with irPD by bidimensional measurements and irSD by unidimensional measurements and one with irSD by bidimensional measurements and irPD by unidimensional measurements. Forty-one patients (72%) had irSD as the best immune-related response according to both measurements.

Kaplan–Meier estimates of TTP are shown in Fig. 3. At 6 months, 70% of patients were found to be free of progression using the bidimensional assessment, compared with 81% using the unidimensional assessment. Estimates of the 25th percentile (time point at which 75% are free of progression) were 5.3 months (95% CI, 3.5– $\infty$ ) by



**Figure 1.** The percent changes according to bidimensional and unidimensional measurements at each follow-up scan from the 1st to 17th follow-up scans. The orange dashed lines represent the cut-off values for response and progression ( $-50\%$  and  $+25\%$  for bidimensional measurements,  $-30\%$  and  $+20\%$  for unidimensional measurements). The observations within the top left, middle center, and top right boxes have concordant assessment between two measurements, whereas observations in other boxes have discordant assessment. The purple dashed line represents  $+44\%$  change for bidimensional measurements, which corresponds to  $+20\%$  change for unidimensional measurements, which was given to visually demonstrate that more observations are concordant if this cut-off value is used. The percent changes presented in the figure are in comparison with baseline measurements when tumors are decreasing to assess response and in comparison with the nadir (the smallest measurement since baseline) when tumors are increasing to assess progression. These values are displayed as they are used to define response/progression in patients at the time of response assessment.





**Figure 2.** The waterfall plot of the percent change of bidimensional and unidimensional measurements at the first follow-up. Dark gray bars represent the percent changes by bidimensional measurements and light gray bars represent the percent change by unidimensional measurements. Dashed lines show cut-off values for bidimensional response and progression (-50% and +25%). Dotted lines show cutoff values for unidimensional response and progression (-30% and +20%). Response assessment at the 1st follow-up by 2 assessments had almost perfect agreement (weighted  $\kappa = 0.844$ ). Eight patients with discordant assessment are marked with asterisks (\*). The first 5 patients ( $\Delta$ ) had bidimensional changes more than 200% (range, 238%–768%).

bidimensional assessment versus 9.1 months (95% CI, 3.7– $\infty$ ) by unidimensional assessment. On the basis of the almost identical confidence intervals for the 25 percentile, there is no evidence of a difference in TTP between the 2 methods of assessment.

#### Reproducibility of bidimensional versus unidimensional measurements

In 25 randomly selected patients, the CCCs between the measurements conducted during the trial and the measurements by the radiologist conducted in this study were 0.986 (95% CI, 0.972–0.993) for bidimensional measurements and 0.995 (95% CI, 0.989–0.998) for unidimensional measurements (Table 3).

Bland–Altman plots with 95% limits of agreement and the average relative difference are shown in Fig. 4. The 95% limits of agreement of bidimensional measurements were

(-31.3%, 19.7%), that were twice wider compared with (-16.1%, 5.8%) for unidimensional measurements.

#### Discussion

The present study showed that the immune-related response assessment using unidimensional, longest diameter measurements was highly concordant with the assessment based on bidimensional measurements in patients with advanced melanoma treated in a clinical trial of ipilimumab. The unidimensional measurements had less measurement variability than bidimensional measurements. The results of the study provide a basis for using unidimensional measurements in immune-related tumor response assessment. The study also serves as an initial step to further optimize response assessment in patients treated with immunotherapeutic agents, toward developing a "common language" for immune-related response.

Highly concordant response assessment at each follow-up between bidimensional and unidimensional measurements was noted, with almost perfect agreement between response assessment categories by 2 assessments at the first 3 follow-up scans, which was consistent with our initial expectation. Of note, the high concordance was showed despite of the difference of the cutoff value scales for progression according to bidimensional and unidimensional assessment. Twenty per cent increase in unidimensional measurements corresponds to 44% increase in bidimensional measurements, according to the mathematical conversion provided by RECIST (9). As shown in Fig. 1, the use of the scaled value of 44% for progression by bidimensional measurements would have resulted in even higher agreement between the 2 assessments. On the other hand, 25% increase by bidimensional measurements corresponds to approximately 12%

**Table 2.** Best immune-related response according to bidimensional versus unidimensional assessment

Best response by unidimensional assessment	Best response by bidimensional assessment			
	irCR	irPR	irSD	irPD
irCR	1	0	0	0
irPR	0	7	0	0
irSD	0	0	41	3
irPD	0	0	1	4

NOTE:  $\kappa_w = 0.881$ .

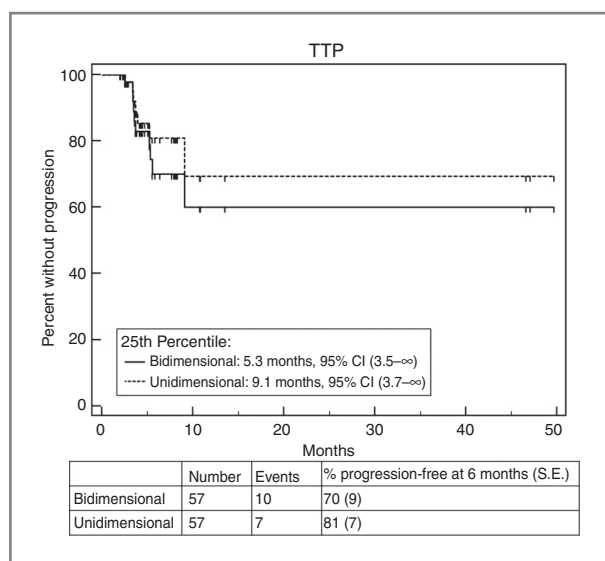


Figure 3. TTP according to bidimensional versus unidimensional assessment.

increase by unidimensional measurements. We did not apply this scaled value due to the concern that 12% unidimensional increase is within the measurement variability and therefore can be attributed to measurement error rather than true increase of tumor, which was supported by the reproducibility results of the present study.

Best immune-related response had almost perfect agreement by weighted kappa analysis, which was consistent with our hypothesis. Most patients (41 of 57, 72%) in the study had the best response of irSD by both assessments, because of the requirement of confirmation for irCR, irPR, and irPD. All 4 patients with discordant best immune-related response were in irPD versus irSD categories, with 3 patients having irPD by bidimensional assessment, whereas they had irSD by unidimensional assessment. Among these 3 patients, one patient was alive after 36.4 months since the initiation of therapy, which was 3 times longer than the median OS of 10.1 months (95% CI, 8.0–13.8) in a phase III trial of ipilimumab in patients with melanoma (1). Other 2 patients died after 13.3 months and after 8.4 months, which were within the 95% CIs of the reported median OS (1). One patient with irSD by bidimensional assessment and irPD by unidimensional assessment died after 22.5 months since the initiation of therapy. The data from the small cohort evaluated by this retrospective study are limited to address the important question of

association between survival and response assessment. The question needs to be addressed in a larger prospective cohort. The discordance could also be related to the difference in cutoff values, as bidimensional 25% increase may require smaller increase than unidimensional 20% increase. Requiring smaller increase for progression is subject to higher rate of misclassification due to measurement variability, especially when the cutoff values are within the range of measurement errors (12).

There was no evidence of a difference in TTP by 2 criteria; however, the majority of patients did not progress during the study and therefore censored by both assessments. This is partly due to the requirement of confirmation for all categories except for irSD, which is one of the unique features of irRC. Because of the same reason, median TTP could not be obtained, which is one of the limitations of the present study. We followed this requirement as it was implemented to capture additional response pattern specific to immunotherapy, that is, decrease of tumor burden after initial progression.

Unidimensional measurements were more reproducible than bidimensional measurements, which was concordant with our initial hypothesis as well as previous reports (12–14). The 95% limits of agreement for bidimensional measurements were twice larger than those for unidimensional measurements. It should also be noted that 25% change for bidimensional measurements are within the measurement error and therefore cannot be reliably used to define progression. On the other hand, the cutoff values for the percent change applied for the unidimensional measurements (–30% for PR and +20% for PD) were beyond the range of measurement variability and therefore can be considered to reflect true change of tumor burden, rather than measurement error (12–14).

The cutoff values used for unidimensional measurements in the present study were based on RECIST guidelines (–30% for PR and +20% for PD; refs. 9–10). We chose these cutoff values because (i) these values are widely accepted in response assessment using unidimensional measurements and (ii) the results obtained using these values can be directly compared with the results of prior trials and studies based on RECIST (10). The capability of directly comparing the trial results in patients with other solid tumors with other systemic anti-cancer agents are becoming increasingly important as newer immunotherapeutic agents are tested and approved for a variety of solid tumors (19, 20).

The current study assessed the measurement variability of 25 randomly selected patients. We based this approach on

Table 3. Interobserver measurement variability

	CCC (95% CI)	Mean relative difference, %	95% limits of agreement, %
Bidimensional measurements	0.986 (0.972–0.993)	–5.8	–31.3, 19.7
Unidimensional measurements	0.995 (0.989–0.998)	–5.1	–16.1, 5.8

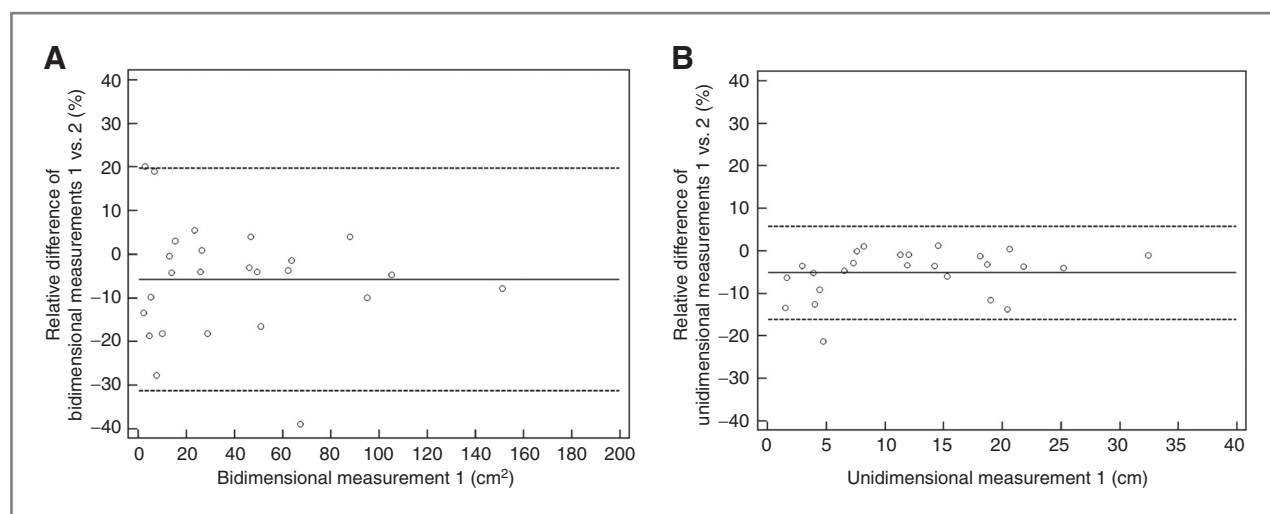


Figure 4. Interobserver variability of bidimensional and unidimensional measurements. Bland-Altman plots show interobserver variability of bidimensional and unidimensional measurements on baseline scans in 25 patients. The 95% limits of agreement of bidimensional measurements were (–31.3%, 19.7%; A, dashed lines), that were twice wider compared with those of unidimensional measurements (–16.1%, 5.8%; B, dashed lines). The dotted lines represent the mean relative difference (%).

past investigations showing that unidimensional measurements were more reproducible than bidimensional measurements. Measurement variability is an important issue in the context of defining the adequate cutoff value for response and progression and remains to be systematically investigated in a larger population of patients during immunotherapy.

Limitations for this analysis include the retrospective design for the unidimensional response assessment. However, the tumor measurement records used in the study were prospectively acquired during the trial. The number of patients included in the analysis was relatively small and was from a single institution. The association between clinical outcome and response assessment results needs to be investigated, which constitutes an important next step to establish an appropriate surrogate marker in cancer immunotherapy.

In conclusion, the irRC using unidimensional tumor measurements provided highly concordant response assessment and had less measurement variability compared with the irRC with bidimensional measurements. Additional investigation is warranted to in a larger cohort with correlations with clinical outcomes and assessments by multiple radiologists for reproducibility to propose the longest axis measurements for tumor response assessment during immunotherapy. It is also necessary to test our observations in patients with other solid tumors treated with other immunotherapeutic agents to evaluate the broader applicability of the results. We are currently planning to validate the observation in

a larger cohort and to systematically investigate the measurement variability to determine adequate cutoff values for response and progression to accurately characterize immune-related response and progression during immunotherapy.

#### Disclosure of Potential Conflicts of Interest

F.S. Hodi has served as a non-paid consultant to Bristol-Myers Squibb and has received clinical trial support from Bristol-Myers Squibb. No potential conflicts of interest were disclosed by the other authors.

#### Authors' Contributions

**Conception and design:** M. Nishino, N.H. Ramaiya, F.S. Hodi  
**Development of methodology:** M. Nishino, N.H. Ramaiya, F.S. Hodi  
**Acquisition of data (provided animals, acquired and managed patients, provided facilities, etc.):** M. Nishino, M. Gargano, M. Suda, F.S. Hodi  
**Analysis and interpretation of data (e.g., statistical analysis, biostatistics, computational analysis):** M. Nishino, A. Giobbie-Hurder, F.S. Hodi  
**Writing, review, and/or revision of the manuscript:** M. Nishino, A. Giobbie-Hurder, M. Gargano, M. Suda, N.H. Ramaiya, F.S. Hodi  
**Administrative, technical, or material support (i.e., reporting or organizing data, constructing databases):** M. Gargano, M. Suda, F.S. Hodi  
**Study supervision:** N.H. Ramaiya

#### Grant Support

The investigator M. Nishino was supported by 1K23CA157631 (NCI) and Dana-Farber Cancer Institute Fellowship for the Eleanor and Miles Shore 50th Anniversary Fellowship Program.

The costs of publication of this article were defrayed in part by the payment of page charges. This article must therefore be hereby marked *advertisement* in accordance with 18 U.S.C. Section 1734 solely to indicate this fact.

Received March 29, 2013; revised May 16, 2013; accepted May 23, 2013; published OnlineFirst June 6, 2013.

#### References

- Hodi FS, O'Day SJ, McDermott DF, Weber RW, Sosman JA, Haanen JB, et al. Improved survival with ipilimumab in patients with metastatic melanoma. *N Engl J Med* 2010;363:711–23.
- Weber J, Thompson JA, Hamid O, Minor D, Amin A, Ron I, et al. A randomized, double-blind, placebo controlled, phase II study comparing the tolerability and efficacy of ipilimumab administered with or

- without prophylactic budesonide in patients with unresectable stage III or IV melanoma. *Clin Cancer Res* 2009;15:5591–8.
3. Wolchok JD, Neyns B, Linette G, Negrier S, Lutzky J, Thomas L, et al. Ipilimumab monotherapy in patients with pretreated advanced melanoma: a randomised, double-blind, multicentre, phase 2, dose-ranging study. *Lancet Oncol* 2010;11:155–64.
  4. O'Day SJ, Maio M, Ciarion-Sileni V, Gajewski TF, Pehamberger H, Bondarenko IN, et al. Efficacy and safety of ipilimumab monotherapy in patients with pretreated advanced melanoma: a multicenter single-arm phase II study. *Ann Oncol* 2010;21:1712–7.
  5. Hodi FS, Butler M, Oble DA, Seiden MV, Haluska FG, Kruse A, et al. Immunologic and clinical effects of antibody blockade of cytotoxic T lymphocyte-associated antigen 4 in previously vaccinated cancer patients. *Proc Natl Acad Sci U S A* 2008;105:3005–10.
  6. Lynch TJ, Bondarenko I, Luft A, Lynch TJ, Bondarenko I, Luft A, et al. Ipilimumab in combination with paclitaxel and carboplatin as first-line treatment in stage IIIB/IV non-small-cell lung cancer: results from a randomized, double-blind, multicenter phase II study. *J Clin Oncol* 2012;30:2046–54.
  7. Wolchok JD, Hoos A, O'Day S, Weber JS, Hamid O, Lebbé C, et al. Guidelines for the evaluation of immune therapy activity in solid tumors: immune-related response criteria. *Clin Cancer Res* 2009;15:7412–20.
  8. Nishino M, Jagannathan JP, Krajewski KM, O'Regan K, Hatabu H, Shapiro G, et al. Personalized tumor response assessment in the era of molecular medicine: cancer-specific and therapy-specific response criteria to complement pitfalls of RECIST. *AJR Am J Roentgenol* 2012;198:737–45.
  9. Therasse P, Arbuck SG, Eisenhauer EA, Wanders J, Kaplan RS, Rubinstein L, et al. New guidelines to evaluate the response to treatment in solid tumors: European Organization for Research and Treatment of Cancer, National Cancer Institute of the United States, National Cancer Institute of Canada. *J Natl Cancer Inst* 2000;92:205–16.
  10. Eisenhauer EA, Therasse P, Bogaerts J, Eisenhauer EA, Therasse P, Bogaerts J, et al. New response evaluation criteria in solid tumors: Revised RECIST guideline (version 1.1). *Eur J Cancer* 2009;45:228–47.
  11. Nishino M, Jagannathan JP, Ramaiya N, Van den Abbeele AD. Pictorial review of the new Response Evaluation Criteria in Solid Tumors: revised RECIST guideline version 1.1—What oncologists want to know and what radiologists need to know. *AJR Am J Roentgenol* 2010;195:281–9.
  12. Erasmus JJ, Gladish GW, Broemeling L, Sabloff BS, Truong MT, Herbst RS, et al. Interobserver and intraobserver variability in measurement of non-small-cell carcinoma lung lesions: implications for assessment of tumor response. *J Clin Oncol* 2003;21:2574–82.
  13. Zhao B, James LP, Moskowitz CS, Guo P, Ginsberg MS, Lefkowitz RA, et al. Evaluating variability in tumor measurements from same-day repeat CT scans of patients with non-small cell lung cancer. *Radiology* 2009;252:263–72.
  14. Nishino M, Guo M, Jackman DM, DiPiro PJ, Yap JT, Ho TK, et al. CT tumor volume measurement in advanced non-small-cell lung cancer: performance characteristics of emerging clinical tool. *Acad Radiol* 2011;18:54–62.
  15. Miller AB, Hoogstraten B, Staquet M, Winkler A. Reporting results of cancer treatment. *Cancer* 1981;47:207–14.
  16. Nishino M, Jackman DM, Hatabu H, Yeap BY, Cioffredi LA, Yap JT, et al. New Response Evaluation Criteria in Solid Tumors (RECIST) guidelines for advanced non-small cell lung cancer: comparison with original RECIST and impact on assessment of tumor response to targeted therapy. *AJR Am J Roentgenol* 2010;195:W221–8.
  17. Kaplan EL, Meier P. Nonparametric estimation from incomplete observations. *J Am Stat Assoc* 1958;53:457–81.
  18. Lin LI. A concordance correlation coefficient to evaluate reproducibility. *Biometrics* 1989;45:255–68.
  19. Topalian SL, Hodi FS, Brahmer JR, Gettinger SN, Smith DC, McDermott DF, et al. Safety, activity, and immune correlates of anti-PD-1 antibody in cancer. *N Engl J Med* 2012;366:2443–54.
  20. Brahmer JR, Tykodi SS, Chow LQ, Hwu WJ, Topalian SL, Hwu P, et al. Safety and activity of anti-PD-L1 antibody in patients with advanced cancer. *N Engl J Med* 2012;366:2455–65.