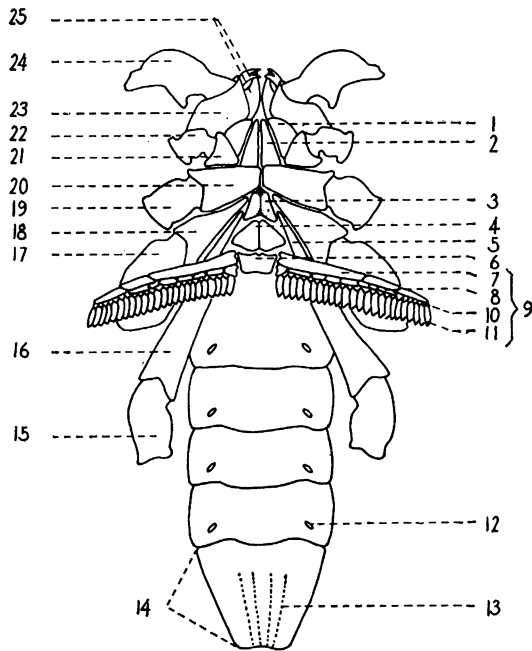


### Correction

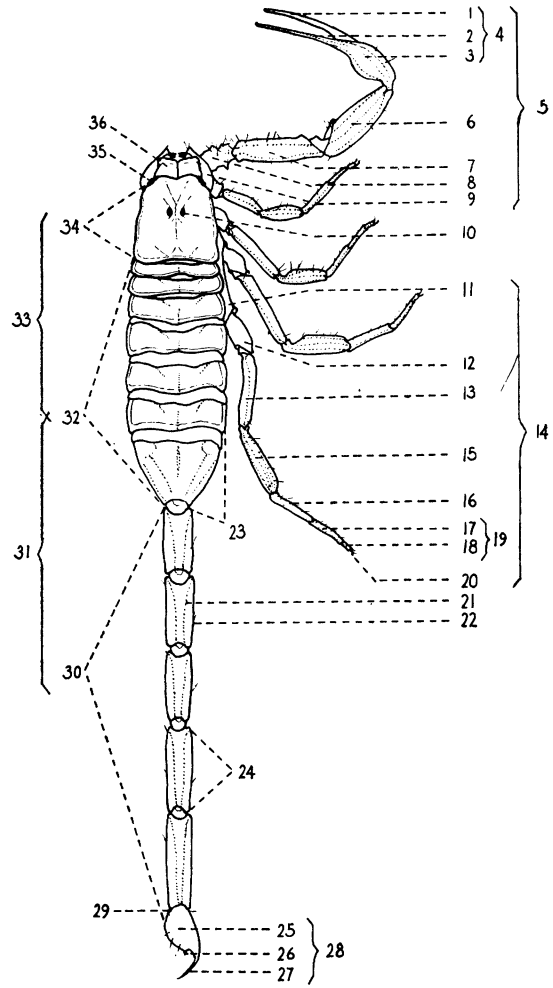


VENTRAL VIEW

Figure 2

VENTRAL VIEW

- |                                 |                               |
|---------------------------------|-------------------------------|
| 1. Maxillary lobe I             | 14. Seventh abdominal segment |
| 2. Maxillary lobe II            | 15. Trochanter (4th leg)      |
| 3. Sternum                      | 16. Coxa (4th leg)            |
| 4. Genital plate (or operculum) | 17. Trochanter (3rd leg)      |
| 5. Coxa (4th leg)               | 18. Coxa (3rd leg)            |
| 6. Basal piece                  | 19. Trochanter (2nd leg)      |
| 7. Anterior lamellae            | 20. Coxa (2nd leg)            |
| 8. Median lamellae              | 21. Coxa (1st leg)            |
| 9. Pectine                      | 22. Trochanter (1st leg)      |
| 10. Fulcrum                     | 23. Coxa (1st leg)            |
| 11. Tooth                       | 24. Coxa (pedipalp)           |
| 12. Stigma (spiracle)           | 25. Chelicera                 |
| 13. Keel                        |                               |



DORSAL VIEW

Figure 3

DORSAL VIEW LEGEND

- |                     |                                   |
|---------------------|-----------------------------------|
| 1. Movable finger   | 20. Claw                          |
| 2. Fixed finger     | 21. Dorsal keel                   |
| 3. Palm             | 22. Superior lateral keel         |
| 4. Chela (hand)     | 23. Seventh pre-abdominal segment |
| 5. Pedipalp         | 24. Fourth caudal segment         |
| 6. Brachium (tibia) | 25. Vesicle                       |
| 7. Humerus (femur)  | 26. Subaculear tooth              |
| 8. Trochanter       | 27. Aculeus                       |
| 9. Coxa             | 28. Telson                        |
| 10. Median eye      | 29. Anus                          |
| 11. Coxa            | 30. Cauda (Postabdomen)           |
| 12. Trochanter      | 31. Abdomen                       |
| 13. Femur           | 32. Pre-abdomen                   |
| 14. Leg             | 33. Trunk                         |
| 15. Patella         | 34. Cephalothorax                 |
| 16. Tibia           | 35. Lateral eyes                  |
| 17. Protarsus       | 36. Chelicera                     |
| 18. Tarsus          |                                   |
| 19. Tarsal joints   |                                   |

The above drawings appeared on page 78 of the March 1957 issue of the ABT in an article titled "Scorpions for Laboratory Study." Through an error the labels were omitted. Since the scorpion structures are quite different from many of the other Arachnids, it was decided to reprint the illustrations with the labels. Our apologies to Herbert L. Stahnke who contributed this fine article.—The Co-Editors.

Three booklets, "Science-Fair Handbook for Exhibitors," "Science-Fair Handbook for Teachers," and "A Manual for Science Fairs," designed for science teachers, educators, and

others who are interested in the planning of science fairs have been published by the Oak Ridge Institute of Nuclear Studies, P. O. Box 117, Oak Ridge, Tennessee.