

Correction: Clinical Impact of Different Classes of Infiltrating T Cytotoxic and Helper Cells (Th1, Th2, Treg, Th17) in Patients with Colorectal Cancer

In this article (Cancer Res 2011;71:1263–71), which was published in the February 15, 2011 issue of *Cancer Research* (1), the labeling within Figure 5 is incorrect. A corrected version of the figure appears below.

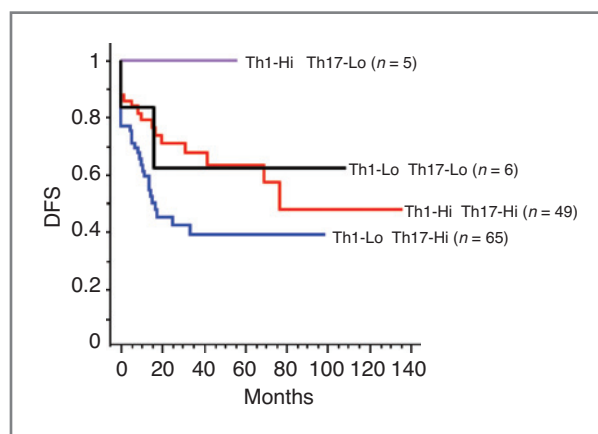


Figure 5.

Reference

1. Tosolini M, Kirilovsky A, Mlecnik B, Frederickson T, Mauger S, Bindea G, et al. Clinical impact of different classes of infiltrating T cytotoxic and helper cells (Th1, Th2, Treg, Th17) in patients with colorectal cancer. *Cancer Res* 2011;71:1263–71.

Published OnlineFirst June 28, 2011.

©2011 American Association for Cancer Research.

doi: 10.1158/0008-5472.CAN-11-1586