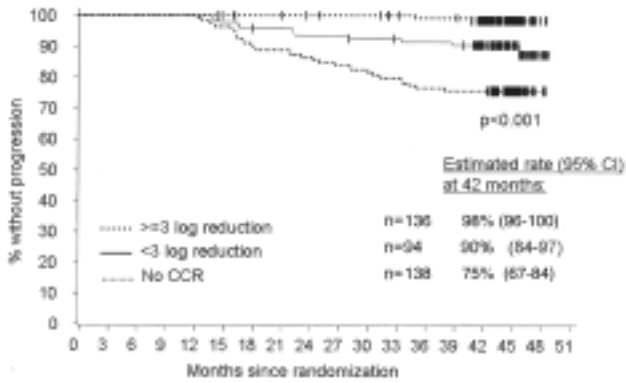




Appendix A: Errata

Erratum for Deininger MWN. Management of early stage disease. Hematology (Am Soc Hematol Educ Program). 2005:174-182.

Page 175. Figure 1. The numbers in the published figure were incorrect. The figure should read as follows::



Erratum for Dzik WH. Technology for advanced transfusion safety. Hematology (Am Soc Hematol Educ Program). 2005:476-482.

Page 482. Reference 24. The page numbers were incorrect as published. The correct citation appears below:

24. Kucher N, Koo S, Quiroz R, et al. Electronic alerts to prevent venous thromboembolism among hospitalized patients. N Engl J Med. 2005:352:969-977.

Erratum for Savage KJ. Aggressive peripheral T-cell lymphomas (specified and unspecified types). *Hematology* (Am Soc Hematol Educ Program). 2005:267-277.

Page 273. Table 3. Several columns were misaligned and some information had been omitted. Please replace with the following table:

Table 3. Selected studies in the last 5 years evaluating the outcome of peripheral T-cell lymphoma (PTCL) patients who have received high dose chemotherapy and autologous (auto) or allogeneic (allo) stem cell transplant in first remission or with relapsed refractory disease.

Study	Total No. Pts	PTCL Subtype (n)	First Remission or Relapsed/Refractory (n)	EFS/PFS	OS	Comments
Rodriguez ³⁸	115	PTCLUS (80) ALCL (25) AILT (6) Other (2)	First remission (37) Auto	79% (5 y)	80% (5 y)	ALK status unknown; median age 31 for primary transplant No patient salvaged with refractory disease
			Relapsed/refractory (78) Auto	79% (5 y) 39% (5 y)	80% (5 y) 45% (5 y)	
Jagasia ⁴³	28	PTCLUS (6) ALCL (11) ALK positive (7) ALK negative (4) CUTALCL (5) AILT (3) NK/T (3)	Relapsed/refractory Auto (23) Allo (5)	50% (3 y) Non-ALCL 38% (3 y)	43% (6 y) Non-ALCL 47% (3 y)	Outcome analyses combined auto and allo transplants ALK ⁺ ALCL superior outcome to other PTCLs and DLBCL
				ALK ⁺ ALCL 100% (3 y)	ALK ⁺ ALCL 100% (3 y)	
				ALK ⁻ ALCL 0% (3 y)	ALK ⁻ ALCL 50% (3 y)	
Blystad ³⁹	40	PTCLUS(20) ALCL (14) AILT (2) ETTL (2) NK/T (2)	First remission (17) Auto	48% (3 y)	58% (3 y)	Outcome analyses combined first remission and relapsed groups ALK status unknown
			Relapsed (23) Auto		Non-ALCL 44% (3 y) ALCL 79% (3 y)	
Song ⁴⁴	36	PTCLUS (20) ALCL (9) AILT (2) NK/T (4) ETTL (1)	Relapsed/refractory Auto	37% (3 y)	48% (3 y)	ALCL (ALK status unknown) trend to improved outcome compared with PTCLUS and DLBCL
				PTCLUS 23% (3 y) ALCL 67% (3 y)	PTCLUS 35% (3 y) ALCL 78% (3 y)	
Corradini ⁴⁷	17	PTCLUS (9) ALK ⁻ ALCL (4) AILT (4)	Relapsed/refractory RIC Allo	64% (3 y)	81% (3 y)	Many had late relapses Unknown whether primary CUTALCL were included

Abbreviations: AILT, angioimmunoblastic T-cell lymphoma; ALK, anaplastic lymphoma kinase; ALCL, anaplastic large cell lymphoma (ALK positive (+) and negative (-)); CUTALCL, cutaneous ALCL; EFS, event-free survival; ETTL, enteropathy-associated T-cell lymphoma; PFS, progression-free survival; OS, overall survival; PR, partial remission; PTCLUS, peripheral T-cell lymphoma, unspecified; Auto, high-dose chemotherapy and autologous stem cell transplant; allo, allogeneic transplant; RIC, reduced intensity conditioning

