

Correction: A Severe Combined Immunodeficient-hu *In Vivo* Mouse Model of Human Primary Mantle Cell Lymphoma

In this article (Clin Cancer Res 2008;14:2154-60), which was published in the April 1, 2008, issue of *Clinical Cancer Research* (1), the authors mistakenly provided duplicate histology micrographs in Figs. 3C (H&E/0.5M) and 4A

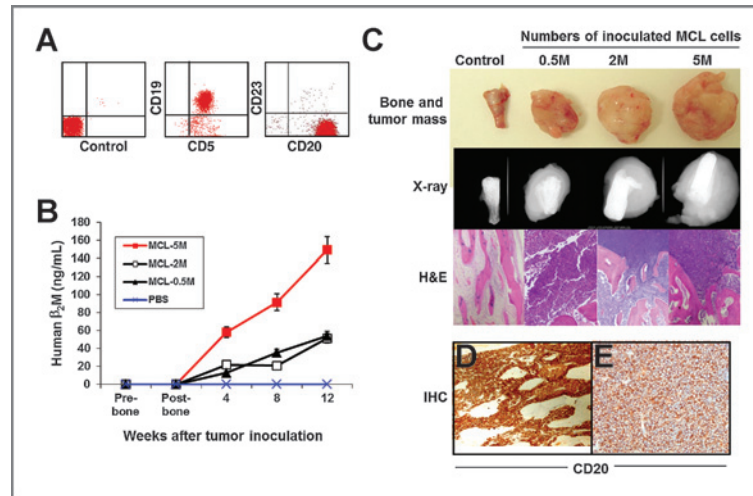


Figure 3.

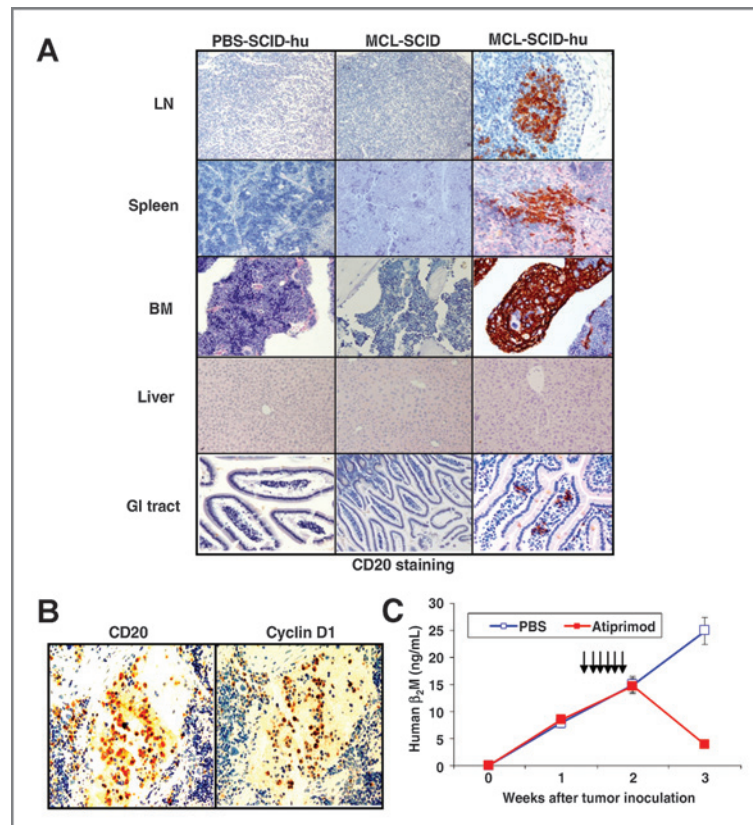


Figure 4.

(spleen/MCL-SCID and liver/MCL-SCID-hu). After reviewing the original pathology data from the immunohistochemistry experiments, the authors have now identified and provided the correct images, which are included in the revised versions of Figs. 3 and 4. The conclusions set forth in the article remain unchanged. The authors regret this error.

Reference

1. Wang M, Zhang L, Han X, Yang J, Qian J, Hong S, et al. A severe combined immunodeficient–hu *in vivo* mouse model of human primary mantle cell lymphoma. *Clin Cancer Res* 2008;14:2154–60.

Published online October 1, 2014.

doi: 10.1158/1078-0432.CCR-14-1308

©2014 American Association for Cancer Research.