

# Formation of artificial granules for proving gelation as the main mechanism of aerobic granulation in biological wastewater treatment

Yun Li, Shu-fang Yang, Jian-jun Zhang and Xiao-yan Li

## ABSTRACT

In this study, gelation-facilitated biofilm formation as a new mechanism is proposed for the phenomenon of aerobic granulation in biological wastewater treatment. To obtain an experimental proof for the gelation-based theory, the granulation process was simulated in a chemical system using latex particles for bacterial cells and organic polymers (alginate and peptone) for extracellular polymeric substances (EPS) in a solution with the addition of cations ( $\text{Ca}^{2+}$ ,  $\text{Mg}^{2+}$  and  $\text{Fe}^{3+}$ ). The results showed that at a low alginate content ( $70 \text{ mg g}^{-1}$  mixed liquid suspended solids (MLSS)) flocculation was observed in the suspension with loose flocs. At a higher alginate content ( $180 \text{ mg g}^{-1}$  MLSS), together with discharge of small flocs, formation of artificial gel granules was successfully achieved leading to granulation. The artificial granules show a morphological property similar to that of actual microbial granules. However, if the protein content increased, granulation became difficult with little gel formation. The experimental work demonstrates the importance of the bonding interactions between EPS functional groups and cations in gel formation and granulation. The laboratory results on the formation of artificial granules provide a sound proof for the theory of gelation-facilitated biofilm formation as the main mechanism for aerobic granulation in sludge suspensions.

**Key words** | activated sludge, aerobic granules, biological wastewater treatment, extracellular polymeric substances (EPS), gelation, granulation

### Yun Li

Xiao-yan Li (corresponding author)  
Environmental Engineering Research Centre,  
Department of Civil Engineering,  
The University of Hong Kong,  
Pokfulam,  
Hong Kong,  
China  
E-mail: xlia@hkucc.hku.hk

### Shu-fang Yang

Jian-jun Zhang  
Shenzhen Municipal Engineering Design Institute,  
Shenzhen,  
China

## INTRODUCTION

Aerobic sludge granulation is a new biological wastewater treatment technology. The aerobic granular process has attracted increasing research attention in recent years owing to its advantages over the conventional activated sludge process, such as high biomass density, fast settling velocity, rapid sludge–effluent separation and strong resistance to shock loading and toxic chemicals (Adav *et al.* 2008; Xiao *et al.* 2008; Ho *et al.* 2010). Various operational parameters have been proposed as important means for aerobic granulation, including a short settling time, strong hydraulic shear intensity and the feast–famine regime (Liu *et al.* 2004; Adav *et al.* 2008). The assistance of excess extracellular polymeric substances (EPS) together with rapid sludge settling and sufficient sludge discharge appear to be crucial to granule formation and growth. EPS are viscid polymers that can adhere to cells to form biofilms with a

dense structure. EPS mainly consist of polysaccharides, proteins, humic acids, lipids and nucleic acids, and the first two types of macromolecules, polysaccharides and proteins, are believed to play a significant role in aerobic granulation (Durmaz & Sanin 2001). Effort has been made to relate the abundances of polysaccharides and proteins as well as their ratio (PS/PN) to the granulation process in bioreactors (Tay *et al.* 2001; McSwain *et al.* 2005).

Use of macromolecular polymers, such as polysaccharides and proteins, in the food industry can result in hydrogel formation (Totosaus *et al.* 2002). Aerobic granules may be considered as hydrogels as they share many similar properties, e.g. a compact structure, a regular shape, smooth surface and a water-swollen body. Seviour *et al.* (2009) have presented strong evidence, by showing the storage and loss moduli, that aerobic granules are physically hydrogels while flocs do not

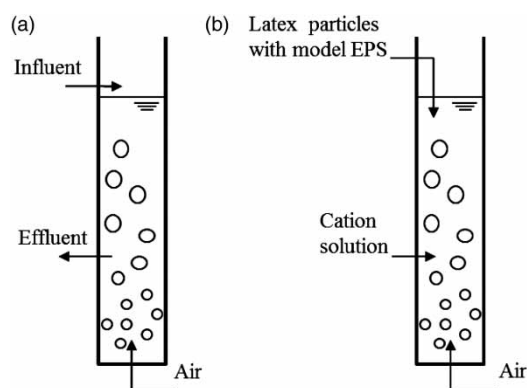
have gel properties. Gelation is a process of gel particle formation, or material solidification, in a solution at ambient temperature. Lin *et al.* (2010, 2013) extracted alginate-like exopolysaccharides (ALE) from aerobic granules and demonstrated the gel-forming property of ALE in a cation (e.g.  $\text{CaCl}_2$ ) solution. The mechanism of ALE-based gelation has been explained by the bonding between carboxylic acids and divalent metal ions based on the classical egg-box model that was first proposed by Morris *et al.* (1982).

However, most previous research has focused on the gel properties of aerobic granules with little attention to the dynamic process of gel formation. In particular, the transformation from loose flocs to dense granules has not been exactly demonstrated in a well-defined chemical system. In this study, in relation to aerobic granulation, a laboratory experiment was carried out to simulate the gel formation process in a particle suspension with alginate and peptone additions. The study was designed to form artificial granules via gelation to provide an experimental proof of the theory of gelation-facilitated biofilm formation for the mechanism of aerobic sludge granulation.

## MATERIALS AND METHODS

### Cultivation of aerobic granules

Batch column reactors were used to cultivate aerobic granules at room temperature (20–22 °C). Each column had a dimension of 3.5 cm in diameter and 30 cm in height with a working volume of 200 mL (Figure 1). The synthetic wastewater consisting of glucose as the carbon source and nutrients was prepared according to the formula given by Tay *et al.* (2001). Seed sludge was an activated sludge



**Figure 1** | Columns used for (a) a biological reactor to cultivate aerobic granules and (b) a chemical reactor to form artificial granules.

suspension collected from a full-scale domestic wastewater treatment plant (Stanley Sewage Treatment Works, Hong Kong). The sludge mixture had a mixed liquid suspended solids (MLSS) concentration of 3,500  $\text{mg L}^{-1}$  with a ratio of volatile suspended solids to suspended solids of 0.68. The reactor was fed manually twice a day with synthetic wastewater after the effluent discharge. The influent chemical oxygen demand (COD) loading increased gradually from 700 to 4,000  $\text{mg L}^{-1} \text{d}^{-1}$ , meanwhile the settling time was shortened from 30 to 1 min to keep fast-settling flocs for development of granules. Fine bubbles were pumped into the reactor through an air diffuser at about 0.8  $\text{L min}^{-1}$  during the aeration phase. The pH in the reactor was maintained in the neutral range between 7.0 and 7.5 by adding  $\text{NaHCO}_3$ .

### Formation of artificial granules for simulation of microbial granulation

The columns described above were also employed for the experimental tests on gel formation and granulation simulation. Latex microspheres with an average diameter of 0.99  $\mu\text{m}$  and a density of 1.05  $\text{g cm}^{-3}$  were suspended in water to simulate bacterial cells. Alginate and peptone were used as representative polysaccharides and proteins in microbial EPS, respectively. These model EPS components were dosed in different combinations and dosages, including alginate alone, peptone alone, and a mixture of alginate and peptone. The cation solution consisted of  $\text{CaCl}_2$ ,  $\text{MgCl}_2$  and  $\text{FeCl}_3$  at a concentration of 3.7  $\text{mmol L}^{-1}$  with a  $\text{Ca}^{2+}:\text{Mg}^{2+}:\text{Fe}^{3+}$  ratio of 5:4:1, which is similar to that in municipal wastewater. Latex particles were first soaked in the model EPS solutions to allow the adsorption of polymers on the particle surface, which simulated bacteria surrounded by secreted EPS. The treated particles were then placed into the cation solution with aeration provided to promote particle aggregation and clustering. After a short period of settling, slow settling particle flocs were discharged from the column. In the remaining solution in the column, more latex particles with model EPS polymers were added. Afterward, the particle suspension was added into the cation solution to induce particle aggregation and attachment. The procedures were repeated until the gel formation was observed and artificial granules were formed.

### Characterization of aerobic granules and artificial granules

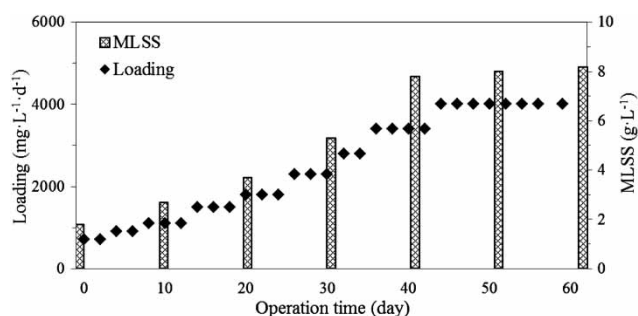
The microbial granules and artificial granules were examined using a scanning electron microscope (SEM). Both

granule samples were first fixed by formaldehyde (4%) before dehydrating by ethanol through a concentration gradient. Before observation with the SEM (Hitachi S3400N VP), critical point drying and lyophilization were used to dry both artificial granules and aerobic granules (Gerhardt *et al.* 1994).

Artificial flocs and granules were further analyzed by a Fourier transform infrared (FTIR) spectrometer. The lyophilized flocs or granules were mixed with KBr power at a ratio of 1:1 and homogenized in an agate grinder. One hundred and fifty milligrams of the solid mixture was compressed and analyzed with a spectrum 8900 IR spectrometer (Shimadzu, Japan). The scanning condition was the same as that described by Hong *et al.* (1999).

### Analysis methods

Measurements of COD and MLSS were performed in accordance with *Standard Methods for the Examination of Water and Wastewater* (1998). For the artificial flocs and granules, the determination of solid contents was the same



**Figure 2** | Organic loading and sludge concentration during the cultivation of aerobic granules.

as the MLSS measurement. The apparent density of granules was determined with a series of glucose solutions of different concentrations and densities (Su & Yu 2005).

## RESULTS AND DISCUSSION

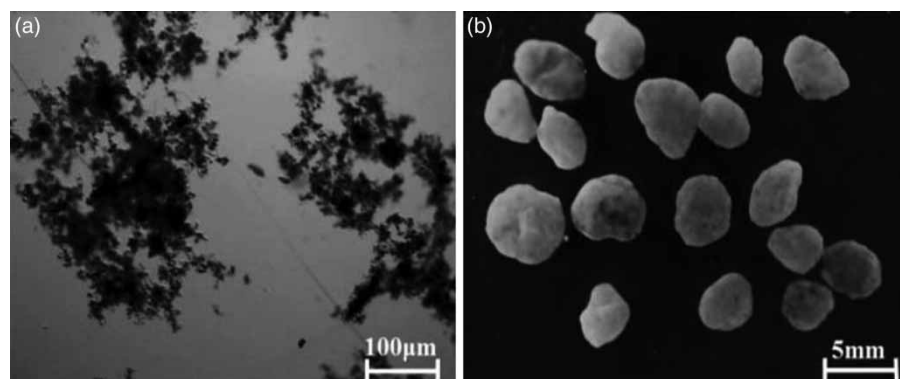
### Cultivation of aerobic granules

Aerobic granules were produced from the seed activated sludge flocs after 40 days of cultivation. During the granulation process, the organic loading and MLSS concentrations increased with time (Figure 2). The size of mature granules was between 2–3 mm. Compared to activated sludge flocs, aerobic granules were larger and denser with a smooth surface (Figure 3).

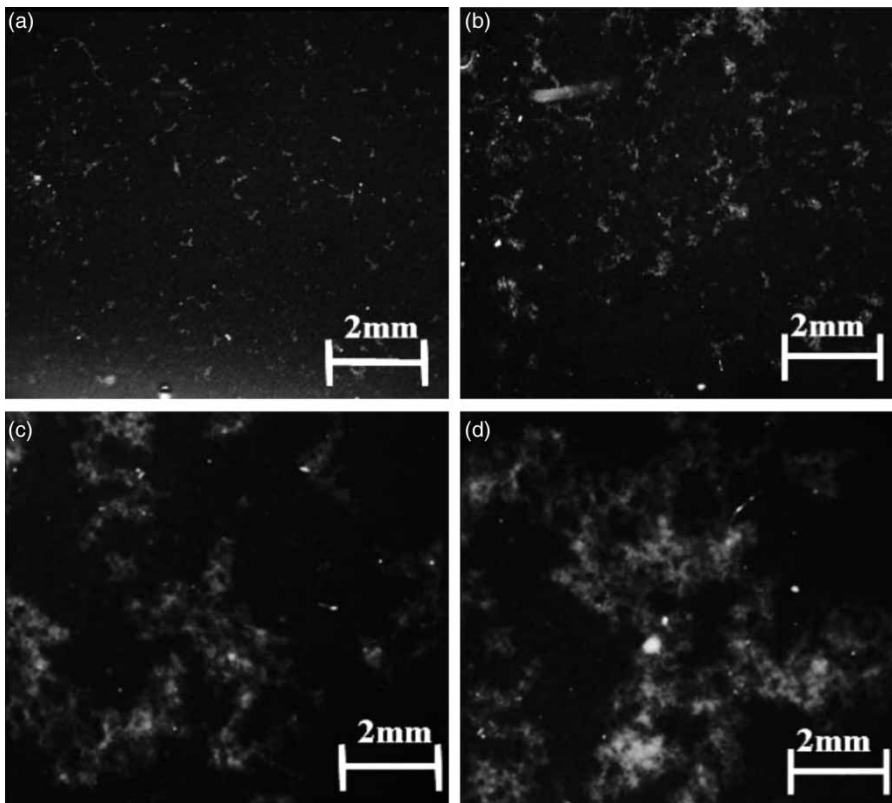
### Formation of artificial granules via gelation

#### Artificial EPS consisting of peptone alone

Latex microspheres were used to simulate bacterial cells, and peptone was used as artificial EPS that was adsorbed by the latex particles. When the particle suspension was placed into the cation solution, aggregation of the particles occurred in the mixture. The peptone content increased from 70 to 500 mg g<sup>-1</sup> MLSS during the study. For each experimental test, the particles and cation solutions were added repeatedly into the suspension, whilst the supernatant with suspended particles and small flocs were discharged. The results show that only the formation of particle flocs was observed for the samples taken at different stages after various feeding and discharging cycles (Figure 4). The particle flocs were similar in appearance to activated sludge flocs. The size of the flocs increased during the dosing and



**Figure 3** | Images of (a) seed activated sludge flocs and (b) mature aerobic granules.



**Figure 4** | Images of the flocculation products after (a) 12 cycles, (b) 15 cycles, (c) 22 cycles and (d) 25 cycles.

flocculation process; however, the flocs were loose in structure without any sign of gel formation. It has been reported that the concentrations of proteins in EPS extracted from the aerobic granulation process are lower than  $200 \text{ mg g}^{-1}$  MLSS (McSwain *et al.* 2005). In Figure 4(d), the peptone concentration was increased to  $500 \text{ mg g}^{-1}$ , far beyond reach of bacteria secretion; however, little gel formation was observed. It is apparent that peptone has little ability to form gel with cations, for which granulation is difficult to achieve.

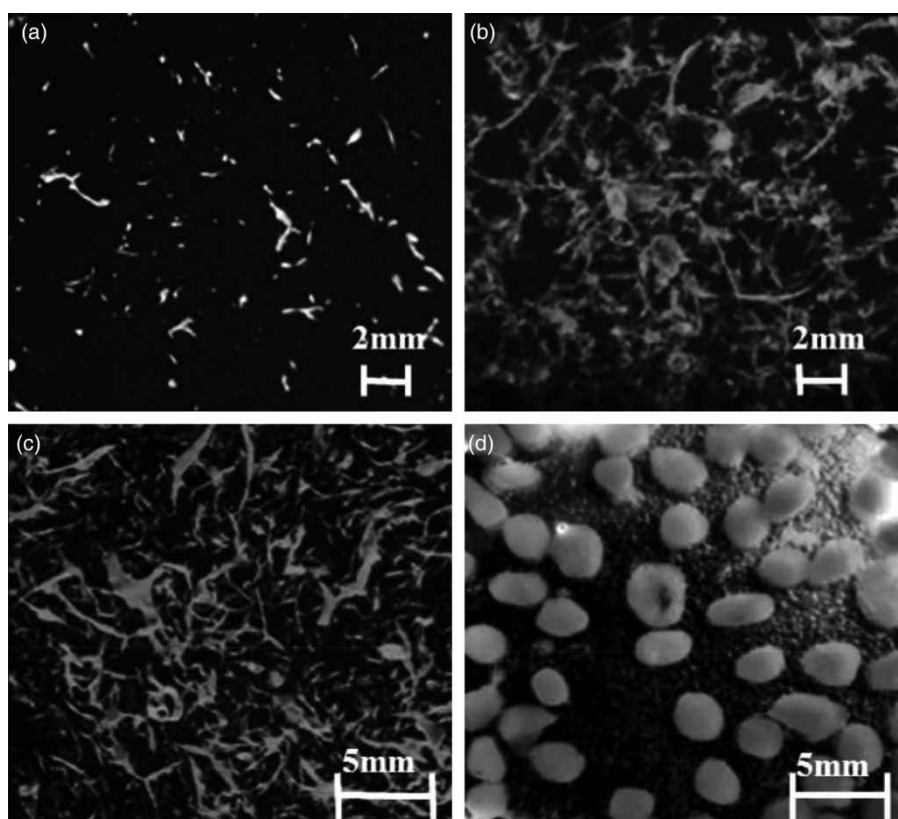
In the food industry, heating or high pressure is often needed for proteins to form gels (Totosaus *et al.* 2002), which is not feasible for the laboratory reactors used in the present study or for sludge suspensions for biological wastewater treatment. The results imply that proteins can play an important role in microbial flocculation. However, proteins alone are not sufficient to lead to bacterial gelation and gelation-based granulation.

#### Artificial EPS consisting of alginate alone

Alginate was used to represent polysaccharides in EPS secreted by cells. The alginate was adsorbed by the latex

microspheres, and the alginate contents from 70 to  $180 \text{ mg g}^{-1}$  MLSS were tested, which is comparable to the actual EPS content in granules (Durmaz & Sanin 2001). With the presence of cations, granule formation was successfully simulated in this particle system (Figure 5). Small flocs were observed after seven cycles. By increasing the alginate content, together with the discharge of single particles and small flocs, the flocs retained in the suspension became bigger and denser after 10 cycles (Figures 5(b) and 5(c)). Eventually, gelation was achieved and artificial granules with a clear surface were formed (Figure 5(d)). The granules were round gels of 3 and 5 mm size with a density of  $1.06 - 1.08 \text{ g cm}^{-3}$ , which are similar to aerobic granules. The experimental results with alginate demonstrated that transformation from flocs to granules could be achieved by gelation.

It is generally accepted that extracellular polysaccharides play a key role in cohesion of cells and granulation (Adav *et al.* 2008). Exopolysaccharides could form a three-dimensional structure by adhesion of bacteria, so that more cells and particles would be attached together into a bigger and denser community (Tay *et al.* 2001). In this simulation, gelation is proven to be an effective way



**Figure 5** | Images of the gel products after (a) two cycles, (b) seven cycles, (c) 10 cycles and (d) 14 cycles.

for polysaccharides to form gels and to attach other particles and small flocs, evolving into granules.

#### Artificial EPS consisting of both alginate and peptone with different PS/PN ratios

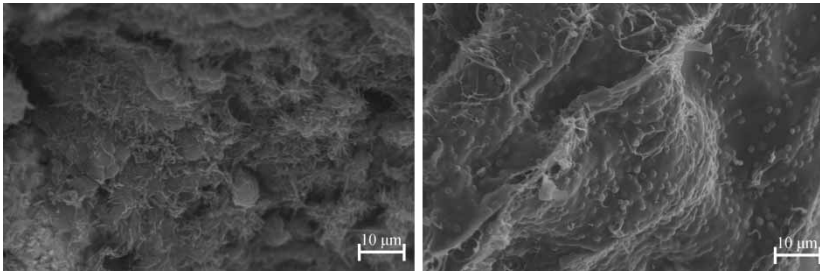
Alginate and peptone were mixed at a series of PS/PN concentration ratios from 2.6 to 5.7, and the total EPS content increased from 48 to 135 mg g<sup>-1</sup> MLSS. Artificial granules with a smooth surface and clear shape were produced in the reactors after 16 feeding and discharging cycles. Thus, a high PS/PN ratio is favorable to granule formation and growth, as polysaccharides make more contribution to granulation. However, in the presence of both alginate and peptone, compared to the experiment with only alginate, both the amount of the EPS contents and the time for granule formation became less in comparison to the experiment with alginate alone. It is apparent that, whereas alginate helped form the backbone of gels, the hydrophobicity of proteins would accelerate gel formation and granulation.

In contrast, when a low PS/PN ratio from 0.5 to 0.28 was applied, even though the total EPS content increased to 300 mg g<sup>-1</sup> MLSS, artificial granules could not be formed in the system. The results suggest that granulation could be hardly achieved with the EPS dominated by proteins.

#### Characterization of the artificial granules

##### SEM examination of aerobic granules and artificial granules

According to SEM observations, aerobic granules had a tightly packed structure, and the bacteria in granules were surrounded by an apparent EPS matrix (Figure 6). Similarly, the artificial granules had a denser structure, and the latex particles were immobilized with threadlike artificial EPS. The similar morphology between actual aerobic granules and artificial gel granules evidenced a successful simulation of the granulation process in a simple particle system under a well-controlled laboratory condition.



**Figure 6** | SEM images of aerobic granules (left) and artificial gel granules (right).

### FTIR analysis of the artificial granules

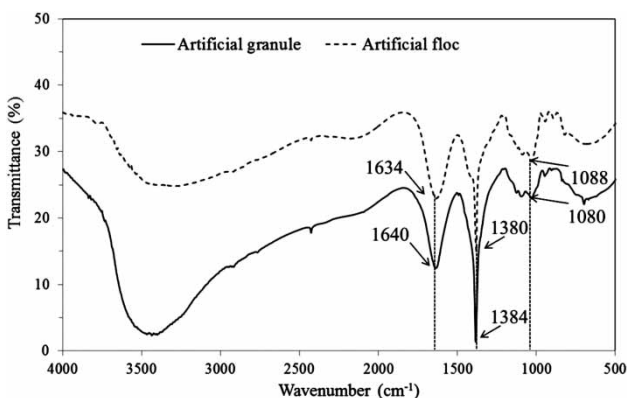
The flocs and granules formed by the latex particles with artificial EPS were analyzed with the FTIR (Figure 7). The  $\text{COO}^-$  peaks could be identified at around  $1,640$  and  $1,380\text{ cm}^{-1}$  (asymmetric and symmetric stretch, respectively), which became broader for the artificial granules for the flocs. In addition, compared to the flocs, the  $\text{COO}^-$  peaks of the granules shifted to certain degrees towards higher wavenumbers. The shift suggests the formation of new coordinate bonding between the carboxylic group and metal ions. That is, according to the egg-box model, cations can take the places of sodium ions in alginate to form a new bonding. The substitution would create a new electron distribution, resulting in the peak shifts. Meanwhile, the C—O stretching peak around  $1,088\text{ cm}^{-1}$  shifted to lower wavenumbers. This is likely caused by the formation of new metal-carboxyl coordinate bonding that weakened the C—O bonds (Sartori *et al.* 1997).

The experimental work in a well-controlled chemical system demonstrated the formation of granules via gelation in a particle suspension. The simulation results imply that gel-facilitated biofilm formation is a sound explanation for aerobic granulation in bioreactors. EPS polymers can form

gels through coordinate bonding with metal ions in wastewater, leading to granule formation. Thus, the research findings provide a solid experimental proof for the gelation-based mechanism of aerobic granulation in biological wastewater treatment.

### CONCLUSIONS

In a simple particle system with latex microspheres for bacterial cells and alginate and peptone for EPS, the granulation process can be simulated with the cation addition and discharge of particles and small flocs. The artificial granules showed a morphological property similar to that of actual microbial granules. Alginate is crucial to gel formation via the coordinate bonding, while peptone can accelerate the process. The results prove the essential role of EPS polysaccharides and their interactions with cations in gel formation, which leads to aerobic granulation. The experimental work on the formation of artificial granules provides a sound proof for the theory of gelation-based biofilm formation as the main mechanism for aerobic granulation in sludge suspensions.



**Figure 7** | FTIR spectra of the artificial flocs and granules.

### ACKNOWLEDGEMENTS

This research was supported by grant 51129803 from the Natural Science Foundation of China, grants HKU714811E from the Research Grants Council (RGC) and SEG\_HKU10 from the University Grants Committee (UGC) of the Hong Kong SAR Government. The technical assistance of Mr Keith C. H. Wong is highly appreciated.

### REFERENCES

- Adav, S. S., Lee, D.-J., Show, K.-Y. & Tay, J.-H. 2008 *Aerobic granular sludge: recent advances*. *Biotechnol. Adv.* **26** (5), 411–423.

- Durmaz, B. & Sanin, F. D. 2001 Effect of carbon to nitrogen ratio on the composition of microbial extracellular polymers in activated sludge. *Water Sci. Technol.* **44** (10), 221–229.
- Gerhardt, P., Murray, R. G. E., Wood, W. A. & Krieg, N. R. 1994 *Methods for General and Molecular Bacteriology*. American Society for Microbiology, Washington, DC, USA.
- Ho, K.-L., Chen, Y.-Y., Lin, B. & Lee, D.-J. 2010 Degrading high-strength phenol using aerobic granular sludge. *Appl. Microbiol. Biotechnol.* **85** (6), 2009–2015.
- Hong, K., Sun, S., Tian, W., Chen, G. & Huang, W. 1999 A rapid method for detecting bacterial polyhydroxyalkanoates in intact cells by Fourier transform infrared spectroscopy. *Appl. Microbiol. Biotechnol.* **51** (4), 523–526.
- Lin, Y., de Kreuk, M., van Loosdrecht, M. C. M. & Adin, A. 2010 Characterization of alginate-like exopolysaccharides isolated from aerobic granular sludge in pilot-plant. *Water Res.* **44** (11), 3355–3364.
- Lin, Y. M., Sharma, P. K. & van Loosdrecht, M. C. M. 2013 The chemical and mechanical differences between alginate-like exopolysaccharides isolated from aerobic flocculent sludge and aerobic granular sludge. *Water Res.* **47** (1), 57–65.
- Liu, Y.-Q., Liu, Y. & Tay, J.-H. 2004 The effects of extracellular polymeric substances on the formation and stability of biogranules. *Appl. Microbiol. Biotechnol.* **65** (2), 143–148.
- McSwain, B., Irvine, R., Hausner, M. & Wilderer, P. 2005 Composition and distribution of extracellular polymeric substances in aerobic flocs and granular sludge. *Appl. Environ. Microbiol.* **71** (2), 1051–1057.
- Morris, E., Powell, D., Gidley, M. & Rees, D. 1982 Conformations and interactions of pectins: I. Polymorphism between gel and solid states of calcium polygalacturonate. *J. Mol. Biol.* **155** (4), 507–516.
- Sartori, C., Finch, D. S., Ralph, B. & Gilding, K. 1997 Determination of the cation content of alginate thin films by FTIR spectroscopy. *Polymer* **38** (1), 43–51.
- Seviour, T., Pijuan, M., Nicholson, T., Keller, J. & Yuan, Z. 2009 Understanding the properties of aerobic sludge granules as hydrogels. *Biotechnol. Bioeng.* **102** (5), 1483–1493.
- Standard Methods for the Examination of Water and Wastewater* 1998 20th edn (E. W. Rice, R. B. Baird, A. D. Eaton, L. S. Clesceri, eds). American Public Health Association/American Water Works Association/Water Environment Federation, Washington, DC, USA.
- Su, K. Z. & Yu, H. Q. 2005 Formation and characterization of aerobic granules in a sequencing batch reactor treating soybean-processing wastewater. *Environ. Sci. Technol.* **39** (8), 2818–2827.
- Tay, J. H., Liu, Q. S. & Liu, Y. 2001 The role of cellular polysaccharides in the formation and stability of aerobic granules. *Lett. Appl. Microbiol.* **33** (3), 222–226.
- Totosaus, A., Montejano, J. G., Salazar, J. A. & Guerrero, I. 2002 A review of physical and chemical protein-gel induction. *Int. J. Food Sci. Technol.* **37** (6), 589–601.
- Xiao, F., Yang, S. F. & Li, X. Y. 2008 Physical and hydrodynamic properties of aerobic granules produced in sequencing batch reactors. *Separation Purification Technol.* **63** (3), 634–641.

First received 5 November 2013; accepted in revised form 27 May 2014. Available online 9 June 2014