

Differential Response to Neoadjuvant Chemotherapy Among 7 Triple-Negative Breast Cancer Molecular Subtypes

Hiroko Masuda^{1,2}, Keith A. Baggerly³, Ying Wang³, Ya Zhang⁴, Ana Maria Gonzalez-Angulo², Funda Meric-Bernstam⁵, Vicente Valero^{1,2}, Brian D. Lehmann⁶, Jennifer A. Pietsenpol⁶, Gabriel N. Hortobagyi², W. Fraser Symmans³, and Naoto T. Ueno^{1,2}

Abstract

Purpose: The clinical relevancy of the 7-subtype classification of triple-negative breast cancer (TNBC) reported by Lehmann and colleagues is unknown. We investigated the clinical relevancy of TNBC heterogeneity by determining pathologic complete response (pCR) rates after neoadjuvant chemotherapy, based on TNBC subtypes.

Experimental Design: We revalidated the Lehmann and colleagues experiments using Affymetrix CEL files from public datasets. We applied these methods to 146 patients with TNBC with gene expression microarrays obtained from June 2000 to March 2010 at our institution. Of those, 130 had received standard neoadjuvant chemotherapy and had evaluable pathologic response data. We classified the TNBC samples by subtype and then correlated subtype and pCR status using Fisher exact test and a logistic regression model. We also assessed survival and compared the subtypes with PAM50 intrinsic subtypes and residual cancer burden (RCB) index.

Results: TNBC subtype and pCR status were significantly associated ($P = 0.04379$). The basal-like 1 (BL1) subtype had the highest pCR rate (52%); basal-like 2 (BL2) and luminal androgen receptor had the lowest (0% and 10%, respectively). TNBC subtype was an independent predictor of pCR status ($P = 0.022$) by a likelihood ratio test. The subtypes better predicted pCR status than did the PAM50 intrinsic subtypes (basal-like vs. non basal-like).

Conclusions: Classifying TNBC by 7 subtypes predicts high versus low pCR rate. We confirm the clinical relevancy of the 7 subtypes of TNBC. We need to prospectively validate whether the pCR rate differences translate into long-term outcome differences. The 7-subtype classification may spur innovative personalized medicine strategies for patients with TNBC. *Clin Cancer Res*; 19(19); 5533–40. ©2013 AACR.

Introduction

Triple-negative breast cancer (TNBC) is defined by lack of expression of estrogen receptor (ER) and of progesterone receptor (PR) and lack of amplification or overexpression of HER2. TNBC represents approximately 15% to 20% of all

patients with breast cancer and compared with other breast cancer types, is associated with a high recurrence rate and short survival duration (1, 2). Reasons for this unfavorable prognosis include the heterogeneity and aggressive nature of the disease and the absence of well-defined molecular targets that could form the basis for targeted therapy (3).

In previous studies, 20% to 30% of patients with TNBC achieved pathological complete response (pCR) neoadjuvant chemotherapy and pCR was strongly associated with prolonged overall survival (OS) and event-free survival (4–7). In fact, patients with TNBC who achieved pCR had the same prognosis as did patients with non-TNBC (4). In contrast, among patients who did not achieve pCR, patients with TNBC had a significantly poorer outcome (a shorter survival duration driven by higher relapse rates) than did patients with non-TNBC (4). TNBC's heterogeneous response to chemotherapy in the neoadjuvant setting suggest that different subtypes of primary TNBC may be associated with high or low pCR rates. Subtype-specific individualization by molecular profiling would help us predict benefit from standard chemotherapy and develop personalized targeted drugs for TNBC.

Authors' Affiliations: ¹Morgan Welch Inflammatory Breast Cancer Research Program and Clinic; Departments of ²Breast Medical Oncology, ³Bioinformatics and Computational Biology, ⁴Pathology, and ⁵Surgical Oncology, The University of Texas MD Anderson Cancer Center, Houston, Texas; and ⁶Department of Biochemistry, Vanderbilt-Ingram Cancer Center, Vanderbilt University School of Medicine, Nashville, Tennessee

Note: Supplementary data for this article are available at Clinical Cancer Research Online (<http://clincancerres.aacrjournals.org>).

H. Masuda and K.A. Baggerly contributed equally to this work.

Corresponding Authors: Naoto T. Ueno, MD Anderson Cancer Center, 1515 Holcombe Blvd., Unit 1354, Houston, TX 77030. Phone: 713-792-8754; Fax: 713-794-4385; E-mail: nueno@mdanderson.org; and W. Fraser Symmans, MD Anderson Cancer Center, Department of Pathology, Unit 85, 1515 Holcombe Blvd., Houston, TX 77030-4009; E-mail: fsymmans@mdanderson.org

doi: 10.1158/1078-0432.CCR-13-0799

©2013 American Association for Cancer Research.

Translational Relevance

Triple-negative breast cancer (TNBC) could be classified into 7 subtypes. These TNBC subtypes were identified in 21 public *mRNA* gene expression profiles of breast cancer with use of cluster analysis. However, the clinical relevancy of the heterogeneity of TNBC is unknown. To address the clinical relevancy, we hypothesized that the subtypes of TNBC have different rates of pathological complete response (pCR) to standard neoadjuvant chemotherapy regimens. In this study, we revalidated that TNBC is heterogeneous and the pCR differs by TNBC subtype using Lehmann and Bauer et al's algorithm. This is the first report that the TNBC subtype can serve as an independent predictor of pCR status in patients who received standard chemotherapy regimens. This confirms the possible clinical relevance of the 7 molecular subtypes and these subtypes may lead to innovative personalized medicine clinical trials for patients with TNBC.

Gene expression analyses have identified molecular subtypes of TNBC that are refining our understanding of breast cancer biology and enabling development of targeted therapy. Recently, Lehmann and colleagues (3) reported that TNBC could be classified into 7 subtypes (6 defined subtypes and an unstable group) by gene expression microarray. The 7 TNBC subtypes were characterized on the basis of gene ontologies and differential gene expression and labeled as basal-like 1 (BL1), basal-like 2 (BL2), immunomodulatory (IM), mesenchymal (M), mesenchymal stem-like (MSL), luminal androgen receptor (LAR), and unstable (UNS).

In this study, we confirmed Lehmann and Bauer's findings and applied their methodology to a population of patients with TNBC. For each molecular subtype, we then evaluated pCR rates after standard neoadjuvant chemotherapy regimens as well as clinical outcomes. Finally, we compared the predictive performance of the 7 subtypes with that of previously defined "intrinsic subtypes" whose gene expression profiles are established through the 50-gene prediction analysis of microarray (PAM50) assay (8) and also evaluated the residual breast cancer burden (RCB) index (9), a postchemotherapy pathologic measure that considers the size and invasive proportion of the primary tumor and the number and size of nodal metastases, and has potential to predict the clinical outcome after neoadjuvant chemotherapy more accurately than the current pCR versus non-pCR category.

Materials and Methods

Validation of Lehmann and Bauer's gene expression analysis

Datasets and normalization of data. Reproducing the method of Lehmann and colleagues (3), we obtained 12 public datasets (DNA microarrays of 323 patients) from their TNBC training set and all 7 public datasets (DNA

microarrays of 201 patients) from their TNBC validation set. The raw data for 63 of the 386 samples from their training set were not included in our analysis. Datasets GSE5364 and GSE22513 (56 of the 63 samples) were not available to collect. The remaining 7 of the 63 samples were not used because we could not confirm them as TNBC based on Lehmann and colleagues data. In their study, triple-negative status was identified by using mRNA expression of ER, PR, and HER2; they reported these data in Supplementary Tables. We identified TNBC status from these tables according to their criteria.

All of the arrays used were a type of Affymetrix U133 array: U133A, U133 Plus 2.0, or U133AAofAv2. Lehmann and colleagues used the robust multiarray average algorithm to normalize and quantify the data (10). The data preprocessing and quantification were conducted using R statistical software. We used this approach with two modifications. First, we used the frozen robust multiarray average (fRMA) algorithm, which allows arrays to be analyzed individually or in small batches and then combines the data for analysis, to normalize and quantify all of the datasets. Second, considering the potential effect of platforms on the gene expression profiles, we converted all of the other platforms to HGU133A by using the "fRMA tools" R package. We later used linear mixed models to correct for any remaining platform-specific differences.

***k*-means clustering.** We followed the methods used by Lehmann and colleagues to identify TNBC subtypes and relative gene signatures. A total of 14,644 probes were selected to represent unique genes. We conducted principal component analysis to check for the existence of batch effects. While batch effects were present, feature-by-feature linear models were applied to remove them. Principal component analysis results revealed an obvious batch effect, which was reduced after the application of linear models. We applied consensus clustering using 1,000 iterations of *k*-means clustering to assess the classification robustness and to determine the optimal number of clusters. We conducted *k*-means clustering on the genes ($n = 1,192$) with $SD > 0.8$ and used silhouette width ($s[i]$) to measure the relative closeness of individual samples to their cluster centers. *k*-means clustering resulted in 6 stable clusters ($s[i] > 0$) with a total of 261 samples and 1 unstable cluster ($s[i] < 0$) containing 62 samples. Our consensus clustering results confirmed that it is reasonable to set *k* to 7. We labeled these 7 clusters as subtypes 1 to 7. We computed centroids for each cluster from the consensus clustering and then determined the Pearson correlation of each centroid with each sample in the validation set from Lehmann and colleagues. The highest correlation (and lowest *P* value) was used as the criterion with which to determine the subtype that a specific sample belonged to (detail in Supplementary Data).

Comparison of Lehmann and Bauer's and our subtype classification. We compared our clustering of the training and validation samples with the clustering by Lehmann and colleagues by using 7×7 contingency tables and χ^2 tests. We also used Cohen's κ to assess the association between

our classifications and those reported by Lehmann and colleagues.

Application of the method to our population

Patients and samples. We next applied the Lehmann and colleagues method to a separate population of patients with TNBC. This group consisted of 146 patients treated for TNBC at MD Anderson Cancer Center (Houston, TX). This dataset derived from a prospective study by Hatzis and colleagues (11), which was conducted from June 2000 to March 2010 to develop genomic predictors for neoadjuvant chemotherapy; 97 patients overlapped the group reported by Hatzis and colleagues. We also added new samples that were included in the cohort since the 2011 data were released ($n = 49$). Among the 146 patients, 132 patients had received neoadjuvant chemotherapy containing sequential taxane and anthracycline-based regimens and had evaluable neoadjuvant pathologic response. We excluded 2 of these patients because they had received neoadjuvant radiotherapy. Thus, 130 patients were included in our study (Table 2). Patients had provided written informed consent to participate in an institutional review board–approved research protocol (LAB99-402, USO-02-103, 2003-0321, and I-SPY-1) that allowed obtaining a tumor biopsy sample by fine-needle aspiration or core biopsy before any systemic therapy, for genomic studies to develop and test predictors of treatment outcome (9).

We identified TNBC by immunohistochemistry (IHC) or FISH testing. ER status and PR status were considered negative if less than 10% of cells stained positively on IHC. HER2 status was considered negative if (a) IHC results were 0 to +1, (b) IHC results were +2 and FISH results were negative. To exclude samples falsely identified as negative by IHC, we implemented a secondary filter that removed samples in which ER expression (205225_at) was more than the 75% at the transcriptome level, as it was previously shown that more than 96% of TNBC samples from the original 386-patient TNBC cohort had ER expression below the 75% of all genes (12).

We collected the patient age, clinical stage, treatment regimen, and nuclear grade. We defined pCR as no evidence of invasive carcinoma in the breast and the axillary lymph nodes at the time of surgery. The median follow-up from diagnosis to death was 68.1 months (range 5.1–147.5).

All gene expression microarrays were profiled in the Department of Pathology at MD Anderson Cancer Center. Gene expression levels were derived by exposing the microarray to fluorescent probe sets (multiple oligonucleotide probes that hybridize to specific sequences of gene transcripts; refs. 13, 14).

Gene expression analysis. We classified 146 TNBC samples as defined by Lehmann and Bauer's gene signatures. As for the public datasets, we conducted data preprocessing and quantification in R and applied the *frma* algorithm. Before classification, we applied gene-by-gene mean centering to our data.

Association of subtype with pCR status and clinical outcome. We constructed a contingency table and conducted

the Fisher exact test to assess the association between TNBC subtype and pCR status. To assess the independent use of TNBC subtype for predicting pCR status, we fit a logistic regression model to our data and used age, clinical stage, treatment regimens, and nuclear grade as potential explanatory factors. In this context, using a likelihood ratio test, we examined whether adding TNBC subtype provided a significant improvement in predictive value over a model already containing the other 4 explanatory factors.

We used Cox proportional hazards models to estimate the association between TNBC subtype and OS and distant metastasis-free survival (DMFS). We identified OS and DMFS from the diagnosis date to death or to diagnosis of distant metastasis (15).

Relationship between the 7 subtypes and PAM50 subtypes. Hatzis and colleagues (11) identified intrinsic subtypes in their study; thus, for 92 of our patients, we had data on PAM50 subtypes (luminal A, luminal B, HER2-enriched, basal-like, and normal-like; ref. 8). We investigated the relationship between the PAM50 intrinsic subtypes (grouped as basal-like vs. nonbasal-like) and the 7 subtypes identified by Lehmann and colleagues.

Relationship between the 7 subtypes and RCB index. We also assessed the association between TNBC subtype and the RCB index reported by Symmans and colleagues (9). Primary tumor and nodal metastasis samples were evaluated for residual disease as previously described, and tumors were classified as pCR, RCB-I (minimal residual disease), RCB-II (moderate residual disease), or RCB-III (extensive residual disease).

Results

Validation of Lehmann and Bauer's TNBC classification

In our analysis, 7×7 contingency tables (Table 1) indicated high correlation ($P < 2.2 \times 10^{-16}$) between our clustering and the original clustering. We also used Cohen's κ coefficient to assess the association between our classifications and those reported by Lehmann and colleagues. For the training set, the κ value was 0.662 ($n = 277$); for the validation set, 0.462 ($n = 200$). Using large-sample normal approximations, the Kappa 2 function in the R package gave approximate z values of 26.1 and 16.2, respectively; the P values were essentially 0.

The contingency table for the training set (Table 1) indicated that the BL1, M, IM, MSL, and LAR subtypes are more stable than the BL2 and UNS subtypes. The contingency table for the validation set (Table 1) indicated that subtypes IM, MSL, and LAR are more stable than the other subtypes.

In summary, there was high correlation between the results of the Lehmann and colleagues study and the results we obtained by using approximately the same methods.

TNBC subtypes predict pCR status of patients treated with neoadjuvant chemotherapy

Of the 130 patients with evaluable pathologic response after neoadjuvant chemotherapy, 16 patients received an

Table 1. The 7 × 7 contingency tables showing the clustering of samples in the training set and validation set using two sets of gene signatures as determined by Lehmann and colleagues and by us

Lehmann and colleagues									
MD Anderson Cancer Center	Training set	BL1	BL2	M	IM	MSL	LAR	UNS	<i>P</i>
	BL1	40	10	1	8	0	0	9	$P < 2.2 \times 10^{16}$
	BL2	0	3	0	9	0	4	0	
	M	0	3	49	0	0	0	3	
	IM	4	0	0	36	0	0	0	
	MSL	0	3	3	0	20	0	0	
	LAR	0	4	0	0	0	26	0	
	UNS	5	9	4	0	0	4	24	
Lehmann and colleagues									
MD Anderson Cancer Center	Validation set	BL1	BL2	M	IM	MSL	LAR	UNS	<i>P</i>
	BL1	15	0	0	4	0	0	1	$P < 2.2 \times 10^{16}$
	BL2	0	2	0	5	0	2	2	
	M	2	2	21	0	2	1	1	
	IM	6	3	0	30	0	0	2	
	MSL	1	8	4	2	22	0	4	
	LAR	1	1	0	0	0	15	0	
	UNS	10	7	18	2	1	0	3	

anthracycline regimen alone, 3 patients received a taxane regimen alone, and 111 patients received both anthracycline and taxane regimens. We classified patients into sub-

types as follows: BL1, 21 patients; BL2, 8 patients; M, 26 patients; IM, 27 patients; MSL, 13 patients; LAR, 20 patients; and UNS, 15 patients. There was no statistically significant

Table 2. Patient characteristics by TNBC subtype (*n* = 130)

Characteristic	Category	BL1 <i>n</i> = 21	BL2 <i>n</i> = 8	M <i>n</i> = 26	IM <i>n</i> = 27	MSL <i>n</i> = 13	LAR <i>n</i> = 20	UNS <i>n</i> = 15	<i>P</i>
Age (yr)	>50	14	2	13	12	7	6	7	0.283
	<50	7	6	13	15	6	14	8	
Clinical stage	I	0	0	0	2	1	0	0	0.276
	IIA	3	2	6	9	4	7	2	
	IIB	8	4	13	5	1	6	7	
	IIIA	4	1	2	3	1	2	1	
	IIIB	1	0	3	6	1	3	1	
	IIIC	5	1	2	2	5	2	4	
Nuclear grade	2	2	1	4	0	2	7	0	0.008
	3	19	7	22	27	11	13	15	
Treatment regimen	A	1	1	4	4	0	4	1	0.651
	T	0	0	2	1	0	0	0	
	A + T	20	7	20	22	13	16	14	
Pcr	Yes	11	0	8	8	3	2	5	0.043
	No	10	8	18	19	10	18	10	
Distant recurrence	Yes	5	4	12	6	4	4	4	0.348
	No	16	4	14	21	9	16	11	
Local recurrence	Yes	3	2	1	3	0	1	3	0.269
	No	18	6	25	24	13	19	12	
Survival status	Dead	4	4	12	9	4	4	5	0.369
	Alive	17	4	14	18	9	16	10	

Abbreviations: A, anthracycline; T, taxane.

Table 3. Distribution of pCR/non-pCR status by TNBC subtype

	pCR	Non-pCR	pCR rate	95% Confidence interval	P
BL1	11	10	0.52	0.31–0.73	$P = 0.043$
BL2	0	8	0.00	0.00–0.00	
M	8	18	0.31	0.13–0.48	
IM	8	19	0.30	0.12–0.46	
MSL	3	10	0.23	0.001–0.45	
LAR	2	18	0.10	0.03–0.23	
UNS	5	10	0.33	0.09–0.57	

NOTE: Likelihood ratio test: adjusting clinical features: age, clinical stage, nuclear grade, and treatment type. TNBC subtype was an independent predictor of pCR status ($P = 0.022$).

difference in treatment regimens between subtypes ($P = 0.651$).

The pCR rate for all patients was 28% (37/130). BL1 had the highest pCR rate (52%) and BL2 and LAR had the lowest pCR rates (0% and 10%, respectively). The Fisher exact test indicated a significant association between TNBC subtype and pCR status ($P = 0.04379$; Table 3). TNBC subtype was an independent predictor of pCR status ($P = 0.022$) by a likelihood ratio test (based on logistic regression models with and without TNBC subtype as the variant).

Clinical outcomes by subtype

We excluded 8 patients from the survival analysis because of their history of other types of cancer. The Cox models showed no significant association between TNBC subtype and OS ($P = 0.287$) or DMFS ($P = 0.371$). The Kaplan–Meier plots for each subtype with respect to OS and DMFS are shown in Fig. 1A and B, respectively. Owing to the limited sample size, the median survival rates were not available for all TNBC subtypes. However, despite its lower pCR rate, LAR had the best OS rate; M had the worst.

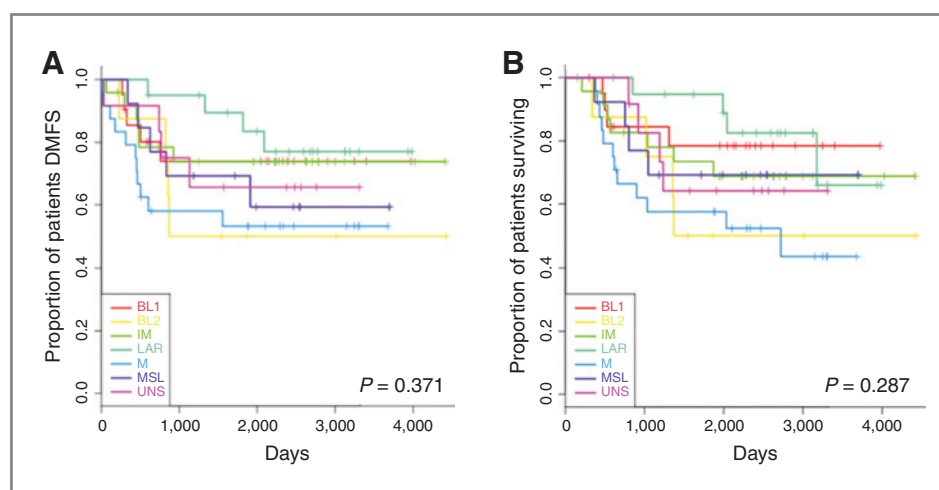
Relationship between the 7 subtypes and PAM50 subtype

As PAM50 gene expression analysis has been incorporated into the clinic and shown to be strongly related to the clinical outcome of breast cancer, we determined the relationship between these classification systems. Figure 2 shows the distribution of the 7 Lehmann and Bauer TNBC subtypes between the PAM50 basal-like subtype and non-basal-like subtypes (grouped). All tumors in the BL1 and BL2 subtypes belonged to the basal-like PAM50 subtype and most tumors in the LAR subtype belonged to the nonbasal-like PAM50 group. In the nonbasal-like group, there were only 3 TNBC subtypes, LAR, MSL, and M; the majority (59%) of these tumors were the LAR subtype.

Relationship between the 7 Subtypes and RCB index

Figure 3 shows the relationship between the 7 subtypes and RCB index. Consistent with Symmans and colleagues previous study, RCB index clearly predicted the clinical outcomes in the TNBC population. There was no statistical difference in OS rate between patients with pCR and those with RCB-I status, and patients with RCB-III showed the lowest OS rate. As seen in Fig. 3, combining the distribution

Figure 1. A, DMFS by TNBC subtype. B, OS by TNBC subtype.



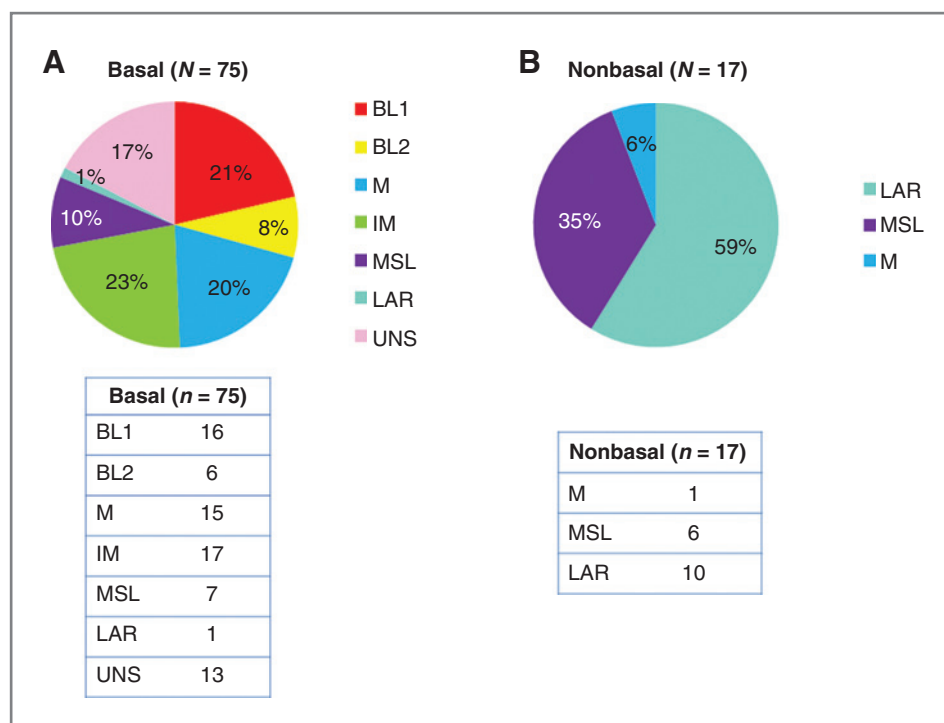


Figure 2. A, the relationship between PAM50 subtypes and the 7 subtypes (basal-like subtype). B, the relationship between PAM50 subtypes and the 7 subtypes (nonbasal-like subtypes).

of pCR and RCB-I revealed that current neoadjuvant chemotherapy has low efficacy for the BL2 subtype in particular.

Discussion

This is the first report that the TNBC subtype can serve as an independent predictor of pCR status in patients who receive current standard chemotherapy regimens. We confirmed that TNBC is heterogeneous and can be classified with high correlation into 7 subtypes, including 1 unstable subtype, by Lehmann and Bauer’s algorithm. In our population, the subtypes better predicted pCR status than did the PAM50 intrinsic subtypes. RCB index predicted prognosis more accurately.

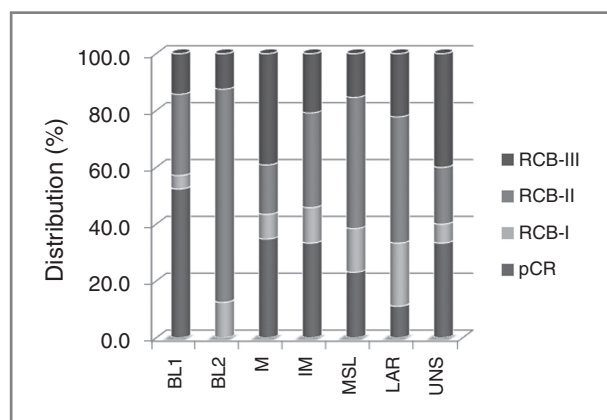


Figure 3. The relationship between RCB index and the 7 subtypes.

Although Lehmann and Bauer’s classification is not the only strategy for defining molecular subtypes of TNBC, it has had a strong impact because it classifies the entire TNBC population into homogeneous subtypes and establishes 7 subtypes, and because subtype classification had a preclinical predictive effect on the outcome of therapy selected to incorporate specific targeted treatments, such as an androgen receptor (AR) antagonist and a PI3K/mTOR inhibitor. Our study has extended these findings by showing that the 7 subtypes predicted the rate of pCR to current standard chemotherapy regimens. Gene expression analyses have identified molecular subtypes of TNBC, such as the claudin-low subtype (16, 17) and basal-like subtype. However, these subsets are still not well defined enough to enable development of targeted therapy or prediction of pathologic response.

It was interesting that while the BL1 subtype had the highest chemosensitivity (pCR rate), as we hypothesized, the BL2 subtype had the lowest pCR rate, contrary to our hypothesis. These subtypes have similar biology, such as high Ki-67 mRNA expression and enrichment of proliferation genes; however, BL2 has unique gene ontologies involving growth factor signaling, such as the EGF, MET, and IGF-IR pathways. The difference in gene ontologies might explain the difference in pCR rates and could provide a basis for individualized therapy. For example, BL2 tumors could be targeted with EGFR or IGF1R inhibitors.

Tumors of the LAR subtype are heavily enriched in hormonally regulated pathways. Consistent with LAR’s low pCR rate, which was in accord with our hypothesis, the luminal A and B intrinsic subtypes, which are hormonally regulated tumors, showed less response to chemotherapy

Downloaded from <http://aacrjournals.org/clinccancerres/article-pdf/19/19/5533/2014173/5533.pdf> by guest on 26 March 2025

(6, 8). However, when we evaluated the RCB index, 33% of patients belonged to the pCR and RCB-I categories. This result might have affected the clinical outcomes. The LAR group had delayed recurrences compared with the other groups and did not have the lowest OS rate despite having a low pCR rate. Also, 75% of distant metastasis in the LAR subtype occurred more than 3 years after diagnosis. The LAR group showed a clearly different clinical process from that of the other subtypes. These results suggest that within TNBC, we need to distinguish the LAR subtype and design a different treatment strategy for this group.

For other groups, consistent with the current knowledge about TNBC, most recurrences and deaths happened within 3 years of diagnosis. For these groups, to achieve pCR is the most desirable result for improving prognosis; thus, we need ways of predicting chemotherapy sensitivity, resistance, or both to guide selection of a treatment regimen and these predictors also should be associated with DMFS and OS. The 7 subtypes have the potential to solve these problems. Further studies are needed to better characterize them.

In a previous study of the PAM50 intrinsic subtypes (2), the basal-like intrinsic subtype showed high chemosensitivity and the difference between the basal-like and non-basal-like subtypes was reported to be the main biologic difference seen among patients with TNBC (18). In our study, all patients in the group with the highest pCR rate, BL1, had tumors characterized as basal-like and all but 1 of the patients in the LAR population, which had a low pCR rate, had nonbasal-like tumors. Interestingly, although all those with the BL1 and BL2 subtypes belonged to the basal-like intrinsic subtype, BL1 had the highest pCR rate and BL2 the lowest. The 7 subtypes more accurately predicted pCR status.

RCB index was significantly associated with OS rate. This index has potential to predict clinical outcomes more accurately than pCR status after neoadjuvant chemotherapy. Combining the distribution of pCR and RCB-I revealed that current neoadjuvant chemotherapy has low efficacy for the BL2 subtype in particular. We conclude that identifying the BL2 population and developing specific treatments for this group would improve the clinical outcome in patients with TNBC as a whole.

Although we reproduced Lehmann and Bauer's 7 subtypes and could apply their algorithm to new data, the results did not match perfectly. Microarray-based molecular classification always involves this risk (19, 20). Even for the well known intrinsic subtypes, several types of gene signatures have been derived in each study and none of the classification systems tested have produced perfect agreement (8, 21–23). Although we had 130 patients and there were a number of additional new samples that were included in the cohort since the 2011 data were released, once the patients were classified into 7 groups, we did not have enough power to show clinical relevance. Furthermore, one of our most interesting groups, BL2, had the smallest sample size. It is almost impossible to collect

samples from consistently treated patients for whom uniform, clear clinical information is also available. Thus, prospective future studies are needed to establish the clinical relevance of using gene profiling to divide patients by subtype. Furthermore, prospective validation by methods such as reverse-phase protein array or IHC staining is needed to measure whether the targets noted in the 7 subtypes are truly overexpressed or are functionally activated at the protein expression level. The clinical use of these TNBC subtypes will not reach its full potential until markers for each subtype can be validated on reliable platforms, which can define the protein expression level or functionality of determine the specific targets that drives the tumorigenicity and metastasis of each subtype (IHC or NanoString Assay).

In summary, our results suggest that we especially need to distinguish the BL2 and LAR subtypes to apply specific treatment strategies for them. These 2 subtypes showed the lowest pCR rates; however, appropriate treatment strategies might be quite different for these 2 subtypes. For the BL2 subtype, we need to develop a novel-targeted therapy in the neoadjuvant setting to achieve a higher pCR rate. In addition, we need to distinguish the LAR subtype from other TNBCs and apply a new treatment strategy similar to that for the luminal intrinsic subtype, such as targeting the AR pathway as a long-term adjuvant treatment. Prospective validation of our findings is needed. We conclude that the 7 subtypes may lead to innovative personalized medicine clinical trials for patients with TNBC.

Information of Microarray Data

Data sets for this study have been deposited into the GEO database (<http://www.ncbi.nlm.nih.gov/geo/>) under accession identification numbers GSE25066, GSE25055, GSE25065, GSE43502, and GSE31519.

Disclosure of Potential Conflicts of Interest

F. Symmans has ownership interest (including patents) in Nuvera Biosciences. No potential conflicts of interest were disclosed by the other authors.

Authors' Contributions

Conception and design: H. Masuda, A.M. Gonzalez-Angulo, W.F. Symmans, N.T. Ueno

Development of methodology: H. Masuda, Y. Wang, N.T. Ueno

Acquisition of data (provided animals, acquired and managed patients, provided facilities, etc.): H. Masuda, Y. Zhang, A.M. Gonzalez-Angulo, F. Meric-Bernstam, V. Valero, W.F. Symmans

Analysis and interpretation of data (e.g., statistical analysis, biostatistics, computational analysis): H. Masuda, K.A. Baggerly, Y. Wang, A.M. Gonzalez-Angulo, B.D. Lehmann, J.A. Pietenpol, G.N. Hortobagyi, N.T. Ueno

Writing, review, and/or revision of the manuscript: H. Masuda, Y. Wang, A.M. Gonzalez-Angulo, F. Meric-Bernstam, V. Valero, B.D. Lehmann, J.A. Pietenpol, G.N. Hortobagyi, W.F. Symmans, N.T. Ueno

Administrative, technical, or material support (i.e., reporting or organizing data, constructing databases): H. Masuda, Y. Wang, Y. Zhang, G.N. Hortobagyi, W.F. Symmans, N.T. Ueno

Study supervision: V. Valero, G.N. Hortobagyi, W.F. Symmans, N.T. Ueno

Grant Support

This research was supported by the NIH through R01 grant CA123318 (to N.T. Ueno) and through Cancer Center Support Grant CA016672 (to MD Anderson Cancer Center), by the Morgan Welch Inflammatory Breast Cancer Research Program and Clinic, by a State of Texas Rare and

Aggressive Breast Cancer Research Program grant, by Susan G. Komen for The Cure (to W.F. Symmans) and The Breast Cancer Research Foundation (to W.F. Symmans).

The costs of publication of this article were defrayed in part by the payment of page charges. This article must therefore be hereby marked

advertisement in accordance with 18 U.S.C. Section 1734 solely to indicate this fact.

Received March 28, 2013; revised July 22, 2013; accepted July 25, 2013; published OnlineFirst August 15, 2013.

References

- Bauer KR, Brown M, Cress RD, Parise CA, Caggiano V. Descriptive analysis of estrogen receptor (ER)-negative, progesterone receptor (PR)-negative, and HER2-negative invasive breast cancer, the so-called triple-negative phenotype: a population-based study from the California cancer Registry. *Cancer* 2007;109:1721-8.
- Carey LA, Dees EC, Sawyer L, Gatti L, Moore DT, Collichio F, et al. The triple negative paradox: primary tumor chemosensitivity of breast cancer subtypes. *Clin Cancer Res* 2007;13:2329-34.
- Lehmann BD, Bauer JA, Chen X, Sanders ME, Chakravarthy AB, Shyr Y, et al. Identification of human triple-negative breast cancer subtypes and preclinical models for selection of targeted therapies. *J Clin Invest* 2011;121:2750-67.
- Liedtke C, Mazouni C, Hess KR, Andre F, Tordai A, Mejia JA, et al. Response to neoadjuvant therapy and long-term survival in patients with triple-negative breast cancer. *J Clin Oncol* 2008;26:1275-81.
- von Minckwitz G, Untch M, Blohmer JU, Costa SD, Eidtmann H, Fasching PA, et al. Definition and impact of pathologic complete response on prognosis after neoadjuvant chemotherapy in various intrinsic breast cancer subtypes. *J Clin Oncol* 2012;30:1796-804.
- Rouzier R, Perou CM, Symmans WF, Ibrahim N, Cristofanilli M, Anderson K, et al. Breast cancer molecular subtypes respond differently to preoperative chemotherapy. *Clin Cancer Res* 2005;11:5678-85.
- Dawood S, Broglio K, Kau SW, Green MC, Giordano SH, Meric-Bernstam F, et al. Triple receptor-negative breast cancer: the effect of race on response to primary systemic treatment and survival outcomes. *J Clin Oncol* 2009;27:220-6.
- Parker JS, Mullins M, Cheang MC, Leung S, Voduc D, Vickery T, et al. Supervised risk predictor of breast cancer based on intrinsic subtypes. *J Clin Oncol* 2009;27:1160-7.
- Symmans WF, Peintinger F, Hatzis C, Rajan R, Kuerer H, Valero V, et al. Measurement of residual breast cancer burden to predict survival after neoadjuvant chemotherapy. *J Clin Oncol* 2007;25:4414-22.
- Irizarry RA, Bolstad BM, Collin F, Cope LM, Hobbs B, Speed TP. Summaries of Affymetrix GeneChip probe level data. *Nucleic Acids Res* 2003;31:e15.
- Hatzis C, Pusztai L, Valero V, Booser DJ, Esserman L, Lluch A, et al. A genomic predictor of response and survival following taxane-anthracycline chemotherapy for invasive breast cancer. *JAMA* 2011;305:1873-81.
- Chen X, Li J, Gray WH, Lehmann BD, Bauer JA, Shyr Y, et al. TNBCtype: a subtyping tool for triple-negative breast cancer. *Cancer Inform* 2012;11:147-56.
- Hess KR, Anderson K, Symmans WF, Valero V, Ibrahim N, Mejia JA, et al. Pharmacogenomic predictor of sensitivity to preoperative chemotherapy with paclitaxel and fluorouracil, doxorubicin, and cyclophosphamide in breast cancer. *J Clin Oncol* 2006;24:4236-44.
- Symmans WF, Hatzis C, Sotiriou C, Andre F, Peintinger F, Regitnig P, et al. Genomic index of sensitivity to endocrine therapy for breast cancer. *J Clin Oncol* 2010;28:4111-9.
- Hudis CA, Barlow WE, Costantino JP, Gray RJ, Pritchard KI, Chapman JA, et al. Proposal for standardized definitions for efficacy end points in adjuvant breast cancer trials: the STEEP system. *J Clin Oncol* 2007;25:2127-32.
- Prat A, Parker JS, Karginova O, Fan C, Livasy C, Herschkowitz JI, et al. Phenotypic and molecular characterization of the claudin-low intrinsic subtype of breast cancer. *Breast Cancer Res* 2010;12:R68.
- Herschkowitz JI, Simin K, Weigman VJ, Mikaelian I, Usary J, Hu Z, et al. Identification of conserved gene expression features between murine mammary carcinoma models and human breast tumors. *Genome Biol* 2007;8:R76.
- Prat A, Adamo B, Cheang MC, Anders CK, Carey LA, Perou CM. Molecular characterization of basal-like and nonbasal-like triple-negative breast cancer. *Oncologist* 2013;18:123-33.
- Mackay A, Weigelt B, Grigoriadis A, Kreike B, Natrajan R, A'Hern R, et al. Microarray-based class discovery for molecular classification of breast cancer: analysis of interobserver agreement. *J Natl Cancer Inst* 2011;103:662-73.
- Pusztai L, Mazouni C, Anderson K, Wu Y, Symmans WF. Molecular classification of breast cancer: limitations and potential. *Oncologist* 2006;11:868-77.
- Sorlie T, Perou CM, Tibshirani R, Aas T, Geisler S, Johnsen H, et al. Gene expression patterns of breast carcinomas distinguish tumor subclasses with clinical implications. *Proc Natl Acad Sci U S A* 2001;98:10869-74.
- Sorlie T, Tibshirani R, Parker J, Hastie T, Marron JS, Nobel A, et al. Repeated observation of breast tumor subtypes in independent gene expression data sets. *Proc Natl Acad Sci U S A* 2003;100:8418-23.
- Hu Z, Fan C, Oh DS, Marron JS, He X, Qaqish BF, et al. The molecular portraits of breast tumors are conserved across microarray platforms. *BMC Genomics* 2006;7:96.