

A Phase II Study of Gefitinib Monotherapy in Advanced Esophageal Adenocarcinoma: Evidence of Gene Expression, Cellular, and Clinical Response

David R. Ferry,¹ Mark Anderson,² Kate Beddard,¹ Simon Tomlinson,³ Paul Atherfold,³ Jolanta Obszyska,² Rebecca Harrison,² and Janusz Jankowski²

Abstract Purpose: At presentation, most cases of adenocarcinoma of the esophagus (ACE) are inoperable. Although chemotherapy can prolong survival, patients eventually die as a result of refractory disease. Epidermal growth factor receptor (EGFR) is almost universally expressed in ACE and is a negative prognostic factor.

Experimental Design: This open-label, two-center, noncomparative, two-part phase II trial assessed the EGFR tyrosine kinase inhibitor gefitinib (500 mg/d) in patients with advanced, inoperable ACE. The primary end point was tumor response. The effect of EGFR inhibition was also evaluated by gene expression analysis of tumor biopsies taken before gefitinib treatment and 28 days after.

Results: Twenty-seven patients were recruited and evaluable for tumor response and safety. Three patients had a partial response and seven had stable disease, giving a disease control rate (partial response + stable disease) of 37%. Drug-related adverse events were generally mild: diarrhea in 19 (grade 3 in three) and rash in 19 (grade 3 in five) patients, and there were no grade 4 drug-related adverse events. Microarray experiments on tumor biopsies showed that gefitinib also down-regulated oncogenes associated with tumor progression. Ki67 (a marker of tumor growth) expression decreased in five of seven biopsies taken before and after treatment.

Conclusion: Gefitinib (500 mg/d) is an active and generally well-tolerated treatment for ACE. Studies on endoscopic biopsies are feasible and indicate that gefitinib inhibits both gene expression and cellular biology at 500 mg/d, and these may provide surrogate end points for predictive biomarkers. Further trials of gefitinib are warranted, particularly as patient response seems to be durable and current second-line chemotherapy options have no proven ability to prolong life.

The incidence of adenocarcinoma of the esophagus (ACE) has increased 3-fold over the past two decades, from 5/100,000 to 15/100,000 (1). At diagnosis, 80% of cases are inoperable (2) and, of those with early local disease who have surgery as part of their treatment, only 15% to 30% will be cured (3–5).

Chemotherapy provides some clinical benefit for the majority of patients with advanced disease, with response rates of 45% and median survival of 10 months (5, 6). For patients

previously treated with chemotherapy, there is no standard systemic treatment option with a proven survival or palliative benefit shown in randomized trials.

ACE is associated with one of the most common premalignant lesions, Barrett's metaplasia. This provides a focus for early detection and intervention. The epidermal growth factor receptor (EGFR) is frequently expressed in ACE, and activation of the EGFR signaling pathway has been implicated in the progression of Barrett's metaplasia to ACE (7). Tumor necrosis factor- α is also up-regulated in Barrett's metaplasia (8) and further increases EGFR expression. It has been suggested that EGFR expression might have prognostic value for patients with Barrett's-associated adenocarcinoma, particularly those with stage II cancer (9). EGFR expression has also been associated with a poor response to therapy, development of cytotoxic drug resistance, disease progression, and poor survival (10–13). Hence, an emerging understanding of the molecular events that characterize the transition to carcinoma may provide novel targets in cancer therapy such as EGFR and tumor necrosis factor- α .

Gefitinib (Iressa) is the first in a new class of anticancer agents (EGFR tyrosine kinase inhibitors). In pretreated patients with advanced non-small cell lung cancer, gefitinib administered at 250 mg/d has shown antitumor activity, disease stabilization, and rapid symptom improvement (14, 15).

Authors' Affiliations: ¹Department of Oncology, New Cross Hospital, Wolverhampton, ²Department of Clinical Pharmacology, University of Oxford and Cancer Research U.K. and ³Lincolns Inn Fields, London, United Kingdom
Received 8/9/06; revised 3/13/07; accepted 4/4/07.

Grant support: AstraZeneca (Macclesfield, Cheshire, United Kingdom), Medical Research Council, and Cancer Research U.K.

The costs of publication of this article were defrayed in part by the payment of page charges. This article must therefore be hereby marked *advertisement* in accordance with 18 U.S.C. Section 1734 solely to indicate this fact.

Note: This original work is not under consideration in any other journal. Some of the content has previously been presented at the ASCO Annual Meeting (see Ferry D.R., et al. Proc Am Soc Clin Oncol 23:317, 2004 [abstr 4021]).

Requests for reprints: David Ferry, Department of Oncology, New Cross Hospital, Wolverhampton WV10 0QP, United Kingdom. Phone: 44-1902-695204; Fax: 44-1902-695624; E-mail: drf@ferryd.freereserve.co.uk.

© 2007 American Association for Cancer Research.
doi:10.1158/1078-0432.CCR-06-1970

We aimed to address the efficacy and safety of gefitinib (500 mg/d) in patients with inoperable ACE and to assess the biological effects of EGFR inhibition using *ex vivo* immunohistochemistry studies, Western blot analysis, DNA sequencing, and microarray technology.

Patients and Methods

Trial design. This open-label, two-center, noncomparative, two-part phase II trial recruited patients with advanced, inoperable ACE. The primary objectives were to assess the tumor response rate for oral gefitinib (500 mg/d). The secondary objectives were to estimate progression-free survival, duration of response, and disease control rate (response plus stable disease); to evaluate changes in quality of life (QoL); and to assess safety by evaluation of adverse event (AE) and serious AE data. Exploratory investigation included the assessment of the inhibition of EGFR phosphorylation and effects on downstream signaling pathways.

After treatment for 1 month, only patients with objective radiologic response, stable disease, or clear palliative benefit continued therapy until disease progression (Fig. 1). Eighteen patients were to be enrolled in the first phase of the study. If there was at least one response in these 18 patients, an additional 9 patients were to be enrolled.

Patient eligibility. All patients provided written, informed consent. ACE was classified according to the WHO classification of esophageal tumors (16). Barrett's esophagus was also confirmed histologically, in association with endoscopic findings using accepted criteria (17–19).

Inclusion criteria were histologically confirmed ACE or adenocarcinoma of the esophagogastric junction, locally advanced or metastatic disease that was incurable with surgery, measurable disease according to Response Evaluation Criteria In Solid Tumors standards, the ability to swallow tablets (patients with dysphagia could have dilation or metal stent insertion prior to trial entry), and those aged ≥ 18 years.

Patient exclusion criteria included previous treatment with more than one chemotherapy regimen, first-line chemotherapy within the past 2 months, radiotherapy to the esophagus or mediastinum in the past 2 months, other coexisting malignancies or malignancies diagnosed within the past 5 years, with the exception of basal cell carcinoma or cervical cancer *in situ*, any unresolved chronic toxicity greater than

grade 2 (National Cancer Institute Common Toxicity Criteria) from previous anticancer therapy, any evidence of severe or uncontrolled systemic disease (in the opinion of the investigator), pregnancy or breast-feeding, and any evidence of clinically active interstitial lung disease.

Safety and tolerability. All AEs were reported and their severity assessed using National Cancer Institute Common Toxicity Criteria version 2.0. Dose interruptions were used as the first approach in managing toxicity. Repeat dose interruptions were allowed, as required, for ≤ 14 days on each occasion. Only one dose reduction per patient was permitted, from 500 to 250 mg/d.

Efficacy. Tumor response assessments were done during screening and every 28 days after the start of treatment until disease progression using Response Evaluation Criteria in Solid Tumors and computed tomography (CT) scans or X-rays. Responders were defined as patients satisfying Response Evaluation Criteria in Solid Tumors for complete response or partial response and stable disease, and were present for at least 8 weeks. Best responses were assigned on withdrawal or 6 months after the first dose of gefitinib. Duration of response was defined as the interval between the date of first documented response and the date of objective, documented disease progression.

Disease control and progression-free survival. Disease control rate was defined as patients with complete response/partial response plus patients with stable disease confirmed and sustained for ≥ 4 weeks. Time to progression was assessed for each patient and defined as the number of days from the first day of treatment to either death or progression, or the last date of patient contact.

QoL assessment. The effect of ACE on symptoms, in particular dysphagia, was assessed using the European Organization for Research and Treatment of Cancer (EORTC) QoL questionnaire QLQ-C30 and the esophageal cancer-specific module QLQ-OES 24, which uses a four-point scale (the lower the value, the less severe the effect). Questionnaires collected at baseline and after 1 and 2 months of treatment were analyzed statistically using a Wilcoxon signed-rank test.

Biomarker analysis. Esophageal tumor and surrounding metaplastic tissue biopsies were taken at baseline and on day 28. Samples were made anonymous according to Medical Research Council Good Clinical Research Practice guidelines and were collected using local National Health Service Ethical Committee guidelines.

Biopsies were analyzed for EGFR, phosphorylated (p-)EGFR, Ki67, ERK, p-ERK, Akt, p-Akt, β -catenin, and γ -catenin by immunohistochemistry using the following primary antibodies: EGFR, p-EGFR, β -catenin, and γ -catenin (Santa Cruz Biotechnology), Ki67 (Transduction Laboratories), ERK1/2 (p44/42 mitogen-activated protein kinase antibody), and p-ERK1/2, Akt1, and p-Akt1 (Cell Signaling Technology). Western blot analysis (20) was also carried out using the following antibodies: EGFR, p-EGFR, E-cadherin (Santa Cruz Biotechnology), β -catenin, p-ERK, and p-Akt (Sigma-Aldrich).

Microarray analysis. Microarray analysis on paired biopsy samples was done independently by Cancer Research U.K. (21). Spot signal measurements used in the analysis were median spot signal values corrected by subtraction of local median background from each spot. Spot signals were excluded from the analysis if they were not significantly different from the background in both channels (using a Mann-Whitney test at 0.001 significance level) or by visual inspection. Differential gene selection was done by selecting genes that showed a fold change of 2-fold or greater in the same direction of change across all samples. Genes with significant fold changes, but with low measurement precision, were rejected from the list using the GeneSpring Global Error Model. Candidate genes were ranked according to the geometric mean of their fold change.

Statistical analysis. The Cancer Research U.K. and AstraZeneca Oncology Trials Group provided statistical advice for all aspects of this study. To assess whether parametric and nonparametric data should be used, data were examined for distribution with ANOVA/*t* tests and Mann-Whitney *U* tests, respectively. Survival curves were calculated using modified Kaplan-Meier tests.

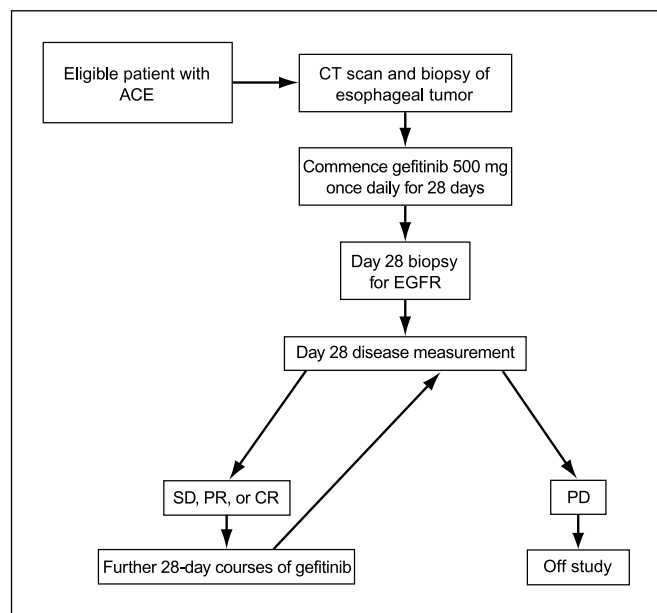


Fig. 1. Trial design.

Results

Patients. A total of 27 patients were enrolled in the study and treated with gefitinib (500 mg/d; Table 1). The first patient was recruited on March 13, 2002 and the last patient was recruited on July 8, 2003. The majority of patients were male (85%), had a WHO performance status of 0 (63%), and all patients had measurable disease. All 27 patients were analyzed for efficacy and safety.

Safety and tolerability. Most AEs were mild (National Cancer Institute Common Toxicity Criteria grade 1 or 2). Twenty-five patients (92.6%) experienced drug-related AEs, with the most common being diarrhea, rash, and dry skin (Table 2). Eight patients experienced grade 3 drug-related AEs which, as previously reported for gefitinib, were diarrhea and skin rash. There were no grade 4 drug-related AEs.

The median (range) overall exposure to gefitinib was 68 (8-336) days. Three patients had a dose reduction to 250 mg/d for a median duration of 23 days; this was due to drug-related toxicity for two patients (grade 2 diarrhea and grade 3 rash, respectively), whereas the other patient reduced his dose without consultation. One patient discontinued treatment due to a grade 3 drug-related rash.

Disease control and survival. Median progression-free survival was 1.9 months (95% confidence interval, 1.0-2.7; Fig. 2A). Five patients (18.5%) were progression-free at 6 months. Median overall survival was 4.5 months (Fig. 2B). Fifteen patients had disease progression and two were not evaluable because they were too ill to attend CT scanning. There were

Table 2. Drug-related grade 1/2 AEs occurring in $\geq 5\%$ of patients plus all drug-related grade 3 AEs in patients ($n = 27$) treated with gefitinib (500 mg/d)

AE	Grades 1/2	Grade 3*
Diarrhea	16 (59.3)	3 (11.1)
Rash †	14 (51.9)	5 (18.5)
Dry skin	10 (37.0)	0
Erythema	3 (11.1)	0
Nausea	2 (7.4)	0

NOTE: Intent-to-treat population ($n = 27$).

*No grade 4 AEs reported.

†Includes macular, papular, pustular, general, and not-otherwise-specified rash.

three partial responses, giving an objective tumor response rate of 11.1% (95% confidence interval, 2.35-29.16; Table 3; Fig. 3). The response durations (confirmed by Response Evaluation Criteria in Solid Tumors) were 4 (patient X), 10.5 (patient Y), and 3.75 months (patient Z). Seven patients had stable disease, therefore, disease control rate was 37% (95% confidence interval, 19.4-57.6).

Characteristics of responding patients. The trial included patients with relapse after surgery, chemotherapy, or other primary therapy; patients from all three groups showed responses.

Patient X was a 51-year-old woman who had received epirubicin, cisplatin, and 5-fluorouracil (5-FU) chemotherapy for stage IV adenocarcinoma of the distal esophagus, achieving a partial response. When she developed dysphagia, a CT scan revealed local, hepatic, and pulmonary disease. This patient rapidly achieved dysphagia palliation and on day 28 of treatment with gefitinib (500 mg/d), there was improvement in all disease sites. She had grade 3 skin toxicity that improved without treatment interruption or dose reduction.

Patient Y, a 52-year-old woman who was wheelchair-bound due to arthritis, was found to have an adenocarcinoma from 35 to 40 cm aboral (or from the incisors) in the distal esophagus (Fig. 3A) with pulmonary metastases. She was deemed unfit for chemotherapy. A metal stent had provided only minimal relief of her dysphagia. By day 28 of treatment with gefitinib (500 mg/d), her swallowing was much improved and she could manage solid food; concomitantly, a CT scan showed improvement of her primary tumor and pulmonary disease (Fig. 3B).

Patient Z was a 46-year-old woman who had received two cycles of cisplatin (80 mg/m²) combined with 5-FU (1 g/m²; days 1-4) prior to undergoing an Ivor-Lewis resection of a T₃N₂ ACE. Thirteen months later, she had a CT scan because of severe back pain requiring morphine (80-100 mg/d). The baseline scan showed a left para-aortic mass (8 × 4 cm) at the level of the renal hilum. On receiving gefitinib (500 mg/d), her symptoms improved and the dose of morphine was decreased to 20 mg/d by day 28. The CT scan on day 56 showed that the mass had been reduced to a 2 × 2 cm abnormality. When her disease progressed 41 weeks later, the patient stopped gefitinib treatment and received epirubicin/cisplatin/5-FU chemotherapy, which caused severe emesis; disease progression continued.

Table 1. Patient demography

Patients, n	27
Sex, n (%)	
Male	23 (85)
Female	4 (15)
Mean age (SD), y	61.0 (10.9)
WHO performance status, n (%)	
0	17 (63.0)
1	10 (37.0)
Mean time from diagnosis to start of treatment (SD), mo	12.0 (9.8)
Measurable tumors and metastases, n (%)*	
Primary	12 (44.4)
Liver	11 (40.7)
Lung	8 (29.6)
Local lymph nodes	5 (18.5)
Distant lymph nodes	3 (11.1)
Skin/soft tissue	2 (7.4)
Other	2 (7.4)
Prior therapy, n (%) †	
Chemotherapy ‡	18 (66.7)
Surgery	8 (29.6)
Radiotherapy	3 (11.1)
No prior chemotherapy§	9 (33.3)

NOTE: Intent-to-treat population.

*Patients could have more than one site of metastasis.

†Patients could have received more than one type of therapy.

‡Seventeen patients had epirubicin, cisplatin, and 5-FU therapy; one had cisplatin/5-FU therapy.

§Patients who had declined chemotherapy or were too frail to receive it.

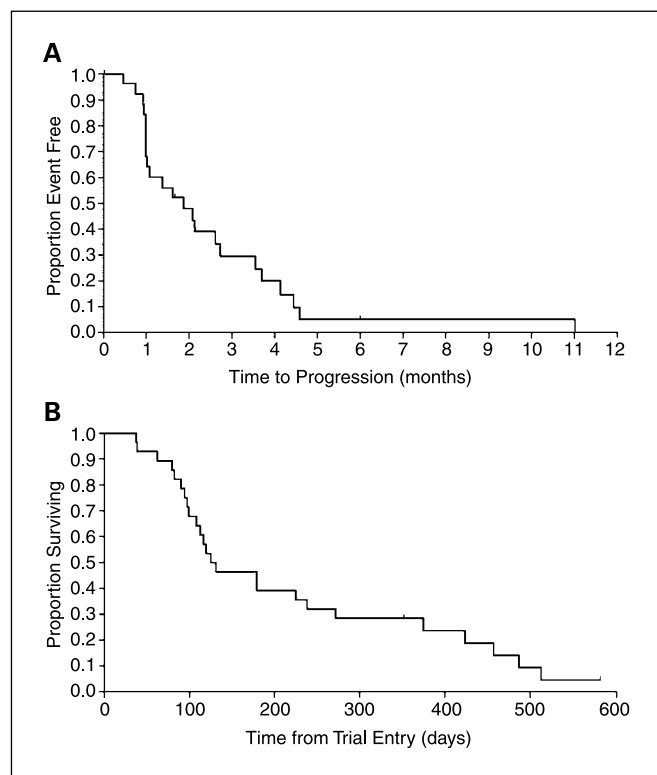


Fig. 2. Kaplan-Meier graph showing (A) progression-free survival and (B) overall survival among 27 patients with ACE treated with gefitinib (500 mg/d). Censored observations (ticks).

QoL. For overall health and QoL (EORTC QLQ-C30), there was minimal or no change from baseline. However, a significant improvement in constipation at 1 and 2 months ($P = 0.02$ and $P = 0.03$, respectively) and a significant worsening of diarrhea at 1 month ($P = 0.01$) were reported. There were no significant changes from baseline in any of the EORTC QLQ-OES 24 scores, which assessed symptoms with particular reference to dysphagia.

Biomarker analysis. In a hypothesis-generating analysis, paired tumor biopsies before and after gefitinib administration were available for seven patients. Following gefitinib treatment, a significant reduction in Ki67 levels ($P < 0.05$) was observed in five of the seven patients (Fig. 4). Proven EGFR mutations were observed in two esophageal adenocarcinomas, one missense L858R, and one in-frame deletion delE746-A750 (previously reported in ref. 34). There was also no significant difference observed for EGFR, p-EGFR, ERK, p-ERK, Akt, p-Akt,

β -catenin, or γ -catenin expression using immunohistochemistry or Western blot analysis, either before or after gefitinib treatment or between responders and nonresponders. The change in p-EGFR levels, although not statistically different, do indicate that in five individual patients there was suppression of p-EGFR expression after therapy (one case had a marked suppression of p-EGFR expression following a clinical response; Fig. 5). It is difficult to know how much this relates to the fact that we had only seven paired biopsies.

Microarray analysis. Out of 12 paired slides that were visually inspected for microarray analysis, 2 slides were used for initial gene selection and another 2 slides were used to support the initial gene selection. A scatter plot of a microarray result set from one patient is presented in Fig. 6. Twenty genes showed statistically significant alterations in expression following treatment with gefitinib (Table 4). Interestingly, of the genes that were down-regulated following treatment of

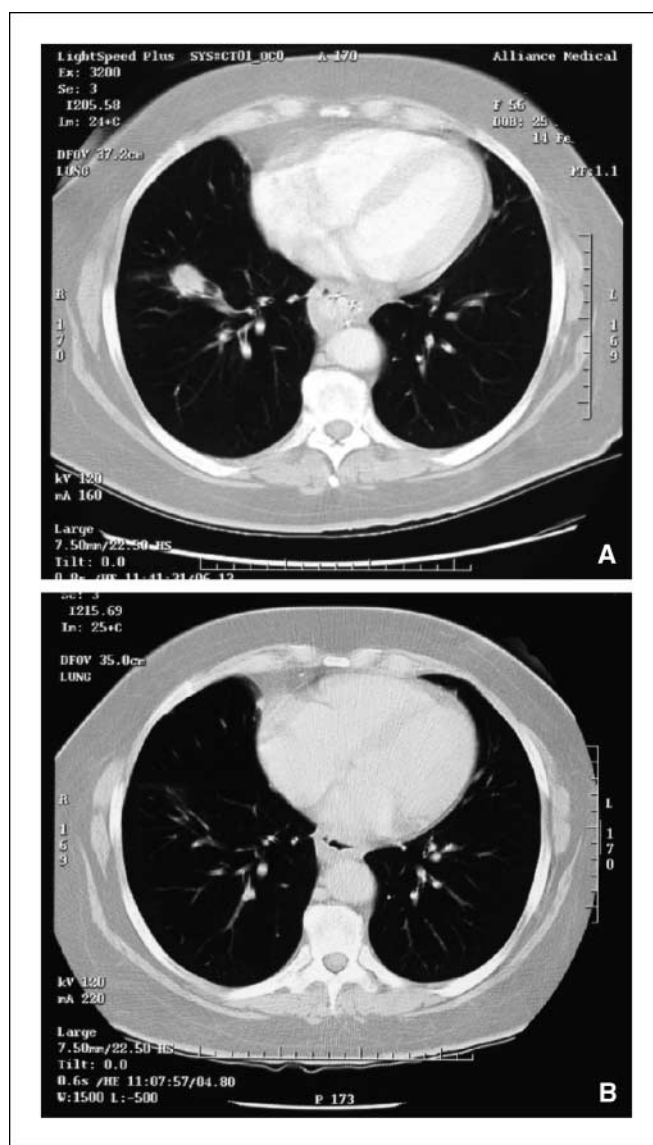


Fig. 3. CT scans of patient X (A) at baseline and (B) after ~4 wk of gefitinib (500 mg/d); patient Y (C) at baseline and (D) after 4 wk of gefitinib; and patient Z (E) at baseline and (F) after 8 wk of gefitinib.

Table 3. Best tumor response to gefitinib (500 mg/d)

	Patients, n (%)
Partial response	3 (11)
Stable disease	7 (26)
Progressive disease	15 (56)
Not evaluable	2 (7)

NOTE: Intent-to-treat population ($n = 27$).

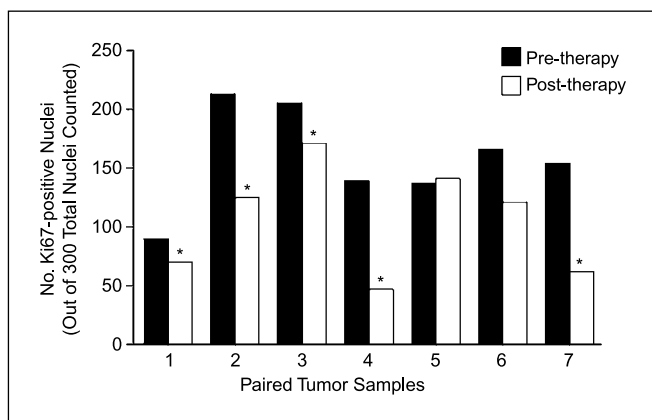


Fig. 4. Paired tumor Ki67 levels before and after gefitinib therapy, analyzed by immunohistochemistry. *, $P < 0.05$ versus pretherapy levels.

gefitinib, five were oncogenes: *LCN2*, which is associated with HER2-positive breast cancer (22); *JAG1*, which enhances angiogenesis in response to growth factors (23); *LTBR*, a tumor necrosis factor C receptor (24); *MNAT1*, which activates and stabilizes cyclin-dependent kinases (25); and *Akt1*, which activates several signaling cascades such as phosphoinositide-3-kinase (26). *CASP8*, an upstream protease of the apoptosis cascade, was also down-regulated (27).

Discussion

This open-label, noncomparative, phase II trial evaluated the efficacy and safety of gefitinib (500 mg/d) in patients with advanced, inoperable ACE. Results indicated that gefitinib might be beneficial for some patients who have exhausted one or more standard treatment options for ACE, including those who are unsuitable for chemotherapy. Among the 27 patients treated, the response rate was 11% and the disease control rate was 37%, with median progression-free survival of 1.9 months. A disease control rate of 37% is impressive, given that this patient population is extremely difficult to treat.

Although patients able to tolerate cisplatin-based chemotherapy (principally epirubicin/cisplatin/5-FU in Europe and cisplatin/5-FU in the U.S.) have improved survival and often

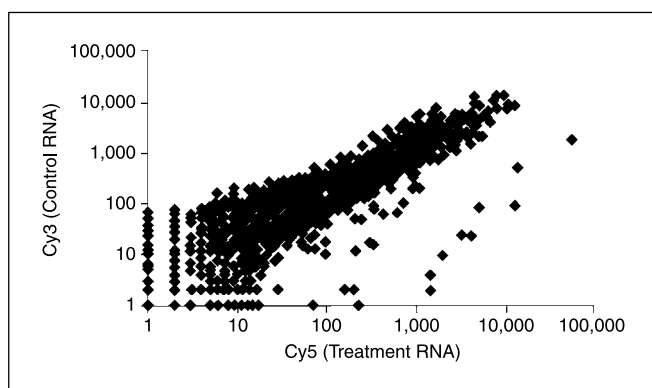


Fig. 5. Changes in Phos-EGFR pre- and 4 wk post-gefitinib. There is no statistical difference but a trend exists, perhaps suggesting Iressa blockade of Phos-EGFR.

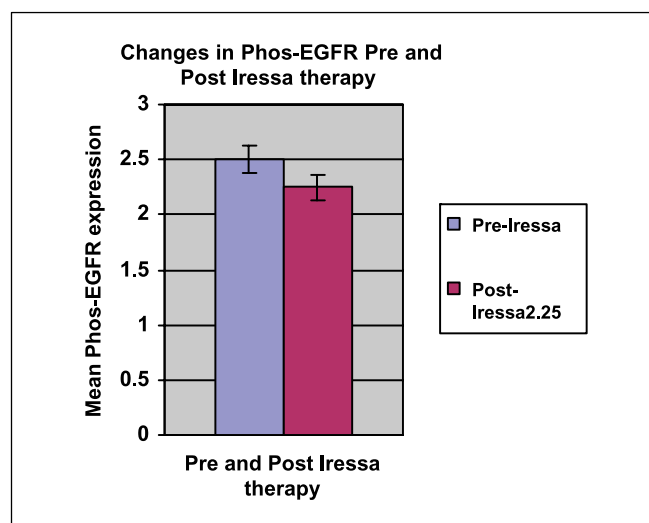


Fig. 6. Scatter plot of microarray results from one patient. Background-corrected normalized signal measurements from the Cy5 channel against measurements from the Cy3 channel for a single chip. Each measurement used was calculated from the median spot signal intensity by subtracting local median background. The measurements from this sample were used in the final data analysis.

good dysphagia palliation, they have no second-line options proven to prolong life or improve QoL. This is in marked contrast to many other disease sites for which second-line therapy with significant clinical benefit has emerged in the past decade, not least in non-small cell lung cancer. Only a small number of published data are available on the role of second-line chemotherapy. In a phase II trial of weekly irinotecan plus docetaxel of 24 patients (28), the overall response rate was

Table 4. Increases (>2.0) and decreases (<0.5) in gene expression following exposure to gefitinib (500 mg/d)

Gene	Description	Mean
<i>STAG2</i>	Stromal antigen 2	5.00
<i>GCLM</i>	Glutamate-cysteine ligase, modifier subunit	2.77
<i>LCN2</i>	Lipocalin 2 (oncogene 24p3)	0.47
<i>ATP1A3</i>	—	0.44
<i>JAG1</i>	Jagged 1 (Alagille syndrome)	0.44
<i>AADAC</i>	Arylacetamide deacetylase (esterase)	0.39
<i>IL1RN</i>	Interleukin 1 receptor antagonist	0.36
<i>LTBR</i>	Lymphotoxin β receptor (TNFR superfamily, member 3)	0.35
<i>MTR</i>	5-Methyltetrahydrofolate-homocysteine methyltransferase	0.34
<i>ACTG2</i>	Actin, $\gamma 2$, smooth muscle, enteric	0.33
<i>MNAT1</i>	Ménage à trois 1 (CAK assembly factor)	0.31
<i>Akt1</i>	v-Akt murine thymoma viral oncogene homologue 1	0.31
<i>CENPC1</i>	Centromere protein C1	0.31
<i>KRT14</i>	—	0.30
<i>ISLL1</i>	Immunoglobulin- λ -like polypeptide 1	0.29
<i>MKRN2</i>	Makorin, ring finger protein 2	0.27
<i>INHBA</i>	Inhibin, βA (activin A, activin AB α polypeptide)	0.25
<i>CASP8</i>	Caspase-8, apoptosis-related cysteine protease	0.25
<i>KRT13</i>	Keratin 13	0.24
<i>IGJ3</i>	Immunoglobulin λ joining 3	0.23

NOTE: Geometric mean measurements, treated versus control.

12.5%. In another phase II study of 38 patients using irinotecan and 5-FU/leucovorin, the overall response rate was 29% (29). Despite the activity reported in these two studies, toxicity was considerable and many patients would be unable to tolerate these treatment regimens.

With respect to safety, gefitinib (500 mg/d) was well tolerated in this study; few patients required dose reductions or withdrawal from therapy. Drug-related AEs were common but generally mild (grade 1/2), consisting mainly of diarrhea and skin reactions.

Two other phase II trials, one using gefitinib (30), and the other, the oral EGFR inhibitor erlotinib (31), have been published. The gefitinib trial included nine patients with squamous cell cancer. To their credit, these authors planned to biopsy their study patients four times a week during the trials, resulting in 24 patients being evaluable for EGFR expression, 13 for pAKT and 22 for pERK. No biological correlates with response or survival were found. In the trial using erlotinib, 43 patients with gastroesophageal junction tumors were studied along with 25 patients with gastric cancers. Their response rate of 9% in the gastroesophageal junction group is similar to what we report here. In contrast with our trial and that of Janmaat et al. (30), this trial used historical archive specimens for the assessment of biological correlates, EGFR expression, pAKT, and transforming growth factor- α were assessed but did not correlate with clinical outcomes. These authors also measured serum epidermal growth factor levels and did a proteomic analysis of plasma which did not provide informative results.

A more extensive pharmacodynamic study in gastric (80%) and gastroesophageal junction cancer (20%) is reported in biopsies from 35 patients who had, as in our study, a pretreatment sample and a day 28 sample (32, 33). It is not clear how many patients with gastroesophageal junction cancers were assessed because the data from the two tumor sites were pooled, but the global result was that there was a correlation, which was proportionate and linear, between apoptotic index and gefitinib AUC₀₋₂₄ and C_{max}. This result is of importance and indicates that it may be important to use higher doses of gefitinib in esophageal cancer.

The phase II trials of gefitinib and erlotinib in esophageal cancer have a consistency in outcome, all report an ~10% response rate, but the approach to assessing biological effects varied. The biological effect we report, which is novel, is the use of gene expression technology. We intend to develop a technology platform to allow the evaluation of gene expression analysis in a planned placebo-controlled phase III trial in this disease.

References

- Sharma P, Sampliner RE. The rising incidence of esophageal adenocarcinoma. *Adv Intern Med* 2001; 46:137–53.
- Thorban S, Rosenberg R, Busch R, et al. Epithelial cells in bone marrow of oesophageal cancer patients: a significant prognostic factor in multivariate analysis. *Br J Cancer* 2000;83:35–9.
- Nigro JJ, DeMeester SR, Hagen JA, et al. Node status in transmural esophageal adenocarcinoma and outcome after en bloc esophagectomy. *J Thorac Cardiovasc Surg* 1999;117:960–8.
- Urba SG, Orringer MB, Turrisi A, et al. Randomized trial of preoperative chemoradiation versus surgery alone in patients with locoregional esophageal carcinoma. *J Clin Oncol* 2001;19:305–13.
- Ross PJ, Rao S, Cunningham D. Chemotherapy of oesophago-gastric cancer. *Pathol Oncol Res* 1998;4: 87–95.
- Webb A, Cunningham D, Scarffe JH, et al. Randomized trial comparing epirubicin, cisplatin, and fluorouracil versus fluorouracil, doxorubicin, and methotrexate in advanced esophagogastric cancer. *J Clin Oncol* 1997;15:261–7.
- Jankowski JA, Wright NA, Meltzer SJ, et al. Molecular evolution of the metaplasia-dysplasia-adenocarcinoma sequence in the esophagus. *Am J Pathol* 1999;154:965–73.
- Tselepis C, Perry I, Dawson C, et al. Tumour necrosis factor- α in Barrett's oesophagus: a potential novel mechanism of action. *Oncogene* 2002;21:6071–81.
- Yacoub L, Goldman H, Odze RD. Transforming growth factor- α , epidermal growth factor receptor, and MIB-1 expression in Barrett's-associated neoplasia: correlation with prognosis. *Mod Pathol* 1997;10:105–12.
- Brabender J, Danenberg KD, Metzger R, et al. Epidermal growth factor receptor and HER2-neu mRNA expression in non-small cell lung cancer is correlated with survival. *Clin Cancer Res* 2001;7:1850–5.
- Meyers MB, Shen WP, Spengler BA, et al. Increased epidermal growth factor receptor in multidrug-resistant human neuroblastoma cells. *J Cell Biochem* 1988;38:87–97.
- Wosikowski K, Shuurhuis D, Kops GJ, et al. Altered gene expression in drug-resistant human breast cancer cells. *Clin Cancer Res* 1997;3:2405–14.

Acknowledgments

AstraZeneca for providing gefitinib, Rachel Edwards (AstraZeneca, Luton, United Kingdom) and Lea-Anne Harrison (University Hospitals of Leicester NHS Trust, Leicester, United Kingdom) for providing technical support, colleagues in New Cross Hospital (Wolverhampton, United Kingdom) for assisting with data collection and CTscans, Dr. Tim Gant (Medical Research Council Centre, Leicester, United Kingdom) for assisting with array chips, and Mark Walker from Complete Medical Communications, who provided medical writing support on behalf of AstraZeneca.

13. Ohsaki Y, Tanno S, Fujita Y, et al. Epidermal growth factor receptor expression correlates with poor prognosis in non-small cell lung cancer patients with p53 overexpression. *Oncol Rep* 2000;7:603–7.
14. Fukuoka M, Yano S, Giaccone G, et al. Multi-institutional randomized phase II trial of gefitinib for previously treated patients with advanced non-small-cell lung cancer. *J Clin Oncol* 2003;21:2237–46.
15. Kris MG, Natale RB, Herbst RS, et al. Efficacy of gefitinib, an inhibitor of the epidermal growth factor receptor tyrosine kinase, in symptomatic patients with non-small cell lung cancer. A randomized trial. *JAMA* 2003;290:2149–58.
16. Pathology and Genetics of Tumours of the Digestive System. World Health Organization Classification of Tumours. Lyon (France): IARC Press; 2000.
17. Sampliner RE. Updated guidelines for the diagnosis, surveillance, and therapy of Barrett's esophagus. *Am J Gastroenterol* 2002;97:1888–95.
18. Sharma P, McQuaid K, Dent J, et al. A critical review of the diagnosis and management of Barrett's esophagus: the AGA Chicago Workshop. *Gastroenterology* 2004;127:310–30.
19. Sharma P, Dent J, Armstrong D, et al. The development and validation of an endoscopic grading system for Barrett's esophagus—the Prague C and M criteria. *Gastroenterology* 2006;131:1392–9.
20. Anderson MA, Harrison RF, Atherfold PA, et al. Met receptor signalling: a key effector in esophageal adenocarcinoma. *Clin Cancer Res* 2006;12:5936–43.
21. Yu J, Othman MI, Farjo R, et al. Evaluation and optimization of procedures for target labeling and hybridization of cDNA microarrays. *Mol Vis* 2002;8:130–7.
22. Chen K, Shepel LA, Stoesz SP, et al. Genetic mapping of the rat *Lcn2* gene to chromosome 3. *Cytogenet Cell Genet* 1999;87:273–4.
23. Zavadil J, Cermak L, Soto-Nieves N, et al. Integration of TGF- β /Smad and Jagged1/Notch signalling in epithelial-to-mesenchymal transition. *EMBO J* 2004;23:1155–65.
24. Force WR, Walter BN, Hession C, et al. Mouse lymphotoxin- β receptor. Molecular genetics, ligand binding, and expression. *J Immunol* 1995;155:5280–8.
25. Eki T, Okumura K, Abe M, et al. Mapping of the human genes encoding cyclin H (CCNH) and the CDK-activating kinase (CAK) assembly factor MAT1 (MNAT1) to chromosome bands 5q13.3-q14 and 14q23, respectively. *Genomics* 1998;47:115–20.
26. Kandel ES, Skeen J, Majewski N, et al. Activation of Akt/protein kinase B overcomes a G(2)/m cell cycle checkpoint induced by DNA damage. *Mol Cell Biol* 2002;22:7831–41.
27. Shivapurkar N, Toyooka S, Eby MT, et al. Differential inactivation of caspase-8 in lung cancers. *Cancer Biol Ther* 2002;1:65–9.
28. Lordick F, von Schilling C, Bernhard H, et al. Phase II trial of irinotecan plus docetaxel in cisplatin-pretreated relapsed or refractory oesophageal cancer. *Br J Cancer* 2003;89:630–3.
29. Assersohn L, Brown G, Cunningham D, et al. Phase II study of irinotecan and 5-fluorouracil/leucovorin in patients with primary refractory or relapsed advanced oesophageal and gastric carcinoma. *Ann Oncol* 2004;15:64–9.
30. Janmaat ML, Gallegos-Ruiz MI, Rodriguez JA, et al. Predictive factors for outcome in a phase II study of gefitinib in second-line treatment of advanced esophageal cancer patients. *J Clin Oncol* 2006;24:1612–9.
31. Dragovich T, McCoy S, Fenoglio-Presier CM, et al. Phase II trial of erlotinib in gastroesophageal junction and gastric adenocarcinomas: SWOG 0127. *J Clin Oncol* 2006;24:4922–7.
32. Rojo F, Taberero J, Albanell J, et al. Pharmacodynamic studies of gefitinib in tumor biopsy specimens from patients with advanced gastric cancer. *J Clin Oncol* 2006;24:4309–16.
33. Adelstein DJ, Rybicki LA, Carroll MA, et al. Phase II trial of gefitinib for recurrent or metastatic esophageal or gastroesophageal junction (GEJ) cancer [abstract 4054]. *J Clin Oncol* 2005;23:16s.
34. Kwak EL, Jankowski J, Thayer SP, et al. *EGFR* kinase domain mutations in esophageal and pancreatic adenocarcinomas. *Clin Cancer Res* 2006;12:4283–7.