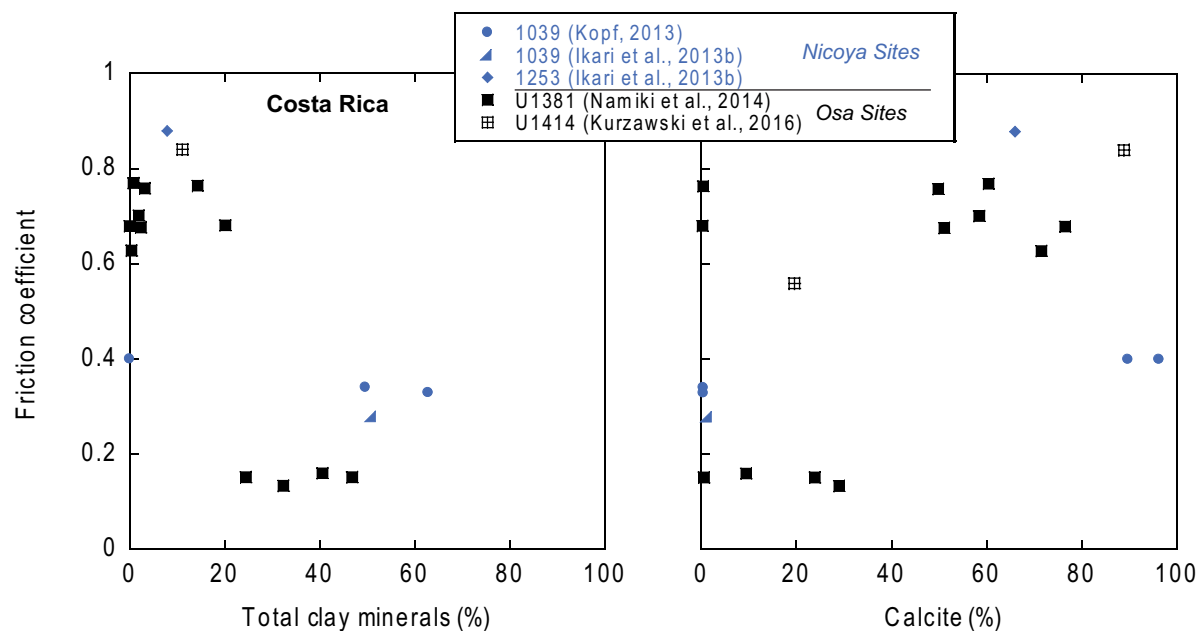


**ERRATUM: Lithologic control of frictional strength variations in subduction zone sediment inputs**

Matt J. Ikari, Achim J. Kopf, Andre Hüpers, and Christoph Vogt

ORIGINAL ARTICLE: 2018, v. 14, no. 2, p. 604–625, <https://doi.org/10.1130/GES01546.1>. First published 28 February 2018.ERRATUM PUBLICATION: 2019, v. 15, no. 2, p. 606, <https://doi.org/10.1130/GES01546e.1>. First Published 5 March 2019.

In the PDF for this paper, horizontal axes labels of Figure 14 are cut off because of a typesetting error. The corrected figure follows.



Friction coefficient as a function of total clay minerals (A) and calcite content (B) for the Middle America Trench drilling sites, offshore Costa Rica (see Fig. 9 for locations). Mineral content data are from Ikari et al. (2013b), Kameda et al. (2015b), and Kurzawski et al. (2016).

**REFERENCES CITED**

Ikari, M.J., Niemeijer, A.R., Spiers, C.J., Kopf, A.J., and Saffer, D.M., 2013b, Experimental evidence linking slip instability with seafloor lithology and topography at the Costa Rica convergent margin: *Geology*, v. 41, p. 891–894, <https://doi.org/10.1130/G33956.1>.

Kameda, J., Harris, R.N., Shimizu, M., Ujiie, K., Tsutsumi, A., Ikehara, M., Uno, M., Yamaguchi, A., Hamada, Y., Namiki, Y., and Kimura, G., 2015b, Hydrogeological responses to incoming materials at the erosional subduction margin, offshore Osa Peninsula, Costa Rica: *Geochemistry Geophysics Geosystems*, v. 16, p. 2725–2742, <https://doi.org/10.1002/2015GC005837>.

Kopf, A., 2013, Effective strength of incoming sediments and its implications for plate boundary propagation: Nankai and Costa Rica as type examples of accreting vs. erosive convergent margins: *Tectonophysics*, v. 608, p. 958–969, <https://doi.org/10.1016/j.tecto.2013.07.023>.

Kurzawski, R.M., Stipp, M., Niemeijer, A.R., Spiers, C.J., and Behrmann, J.H., 2016, Earthquake nucleation in weak subducted carbonates: *Nature Geoscience*, v. 9, p. 717–722, <https://doi.org/10.1038/ngeo2774>.

Namiki, Y., Tsutsumi, A., Ujiie, K., and Kameda, J., 2014, Frictional properties of sediments entering the Costa Rica subduction zone offshore the Osa Peninsula: Implications for fault slip in shallow subduction zones: *Earth, Planets, and Space*, v. 66, 72, <https://doi.org/10.1186/1880-5981-66-72>.