

## Germline Mutation in *BRCA1* or *BRCA2* and Ten-Year Survival for Women Diagnosed with Epithelial Ovarian Cancer

Francisco J. Candido-dos-Reis<sup>1</sup>, Honglin Song<sup>2</sup>, Ellen L. Goode<sup>3</sup>, Julie M. Cunningham<sup>3</sup>, Brooke L. Fridley<sup>4</sup>, Melissa C. Larson<sup>3</sup>, Kathryn Alsop<sup>5</sup>, Ed Dicks<sup>2</sup>, Patricia Harrington<sup>2</sup>, Susan J. Ramus<sup>6</sup>, Anna de Fazio<sup>7</sup>, Gillian Mitchell<sup>5</sup>, Sian Fereday<sup>5</sup>, Kelly L. Bolton<sup>8</sup>, Charlie Gourley<sup>9</sup>, Caroline Michie<sup>10</sup>, Beth Karlan<sup>11</sup>, Jenny Lester<sup>11</sup>, Christine Walsh<sup>11</sup>, Ilana Cass<sup>11</sup>, Håkan Olsson<sup>12</sup>, Martin Gore<sup>13</sup>, Javier J. Benitez<sup>14</sup>, Maria J. Garcia<sup>14</sup>, Irene Andrulis<sup>15</sup>, Anna Marie Mulligan<sup>16</sup>, Gord Glendon<sup>16</sup>, Ignacio Blanco<sup>17</sup>, Conxi Lazaro<sup>17</sup>, Alice S. Whittemore<sup>18</sup>, Valerie McGuire<sup>18</sup>, Weiva Sieh<sup>18</sup>, Marco Montagna<sup>19</sup>, Elisa Alducci<sup>19</sup>, Siegal Sadetzki<sup>20</sup>, Angela Chetrit<sup>20</sup>, Ava Kwong<sup>21</sup>, Susanne K. Kjaer<sup>22</sup>, Allan Jensen<sup>22</sup>, Estrid Høgdall<sup>23</sup>, Susan Neuhausen<sup>24</sup>, Robert Nussbaum<sup>25</sup>, Mary Daly<sup>26</sup>, Mark H. Greene<sup>8</sup>, Phuong L. Mai<sup>8</sup>, Jennifer T. Loud<sup>8</sup>, Kirsten Moysich<sup>27</sup>, Amanda E. Toland<sup>28</sup>, Diether Lambrechts<sup>29</sup>, Steve Ellis<sup>2</sup>, Debra Frost<sup>2</sup>, James D. Brenton<sup>30,31,32</sup>, Marc Tischkowitz<sup>33</sup>, Douglas F. Easton<sup>2</sup>, Antonis Antoniou<sup>2</sup>, for EMBRACE, Georgia Chenevix-Trench<sup>34</sup>, for kConFab Investigators, Simon A. Gayther<sup>6</sup>, David Bowtell<sup>5</sup>, for The Australian Ovarian Cancer Study Group, and Paul D.P. Pharoah<sup>2</sup>

### Abstract

**Purpose:** To analyze the effect of germline mutations in *BRCA1* and *BRCA2* on mortality in patients with ovarian cancer up to 10 years after diagnosis.

**Experimental Design:** We used unpublished survival time data for 2,242 patients from two case-control studies and extended survival time data for 4,314 patients from previously reported studies. All participants had been screened for deleterious germline mutations in *BRCA1* and *BRCA2*. Survival time was analyzed for the combined data using Cox proportional hazard models with *BRCA1* and *BRCA2* as time-varying covariates. Competing risks were analyzed using Fine and Gray model.

**Results:** The combined 10-year overall survival rate was 30% [95% confidence interval (CI), 28%–31%] for non-carriers, 25% (95% CI, 22%–28%) for *BRCA1* carriers, and 35% (95% CI,

30%–41%) for *BRCA2* carriers. The HR for *BRCA1* was 0.53 at time zero and increased over time becoming greater than one at 4.8 years. For *BRCA2*, the HR was 0.42 at time zero and increased over time (predicted to become greater than 1 at 10.5 years). The results were similar when restricted to 3,202 patients with high-grade serous tumors and to ovarian cancer-specific mortality.

**Conclusions:** *BRCA1/2* mutations are associated with better short-term survival, but this advantage decreases over time and in *BRCA1* carriers is eventually reversed. This may have important implications for therapy of both primary and relapsed disease and for analysis of long-term survival in clinical trials of new agents, particularly those that are effective in *BRCA1/2* mutation carriers. *Clin Cancer Res*; 21(3); 652–7. ©2014 AACR.

<sup>1</sup>Department of Gynecology and Obstetrics, Ribeirao Preto Medical School, University of Sao Paulo, Sao Paulo, Brazil. <sup>2</sup>Centre for Cancer Genetic Epidemiology, University of Cambridge, Cambridge, United Kingdom. <sup>3</sup>Mayo Clinic, Rochester, Minnesota. <sup>4</sup>University of Kansas Medical Center, Kansas City, Kansas. <sup>5</sup>The Peter MacCallum Cancer Centre, Melbourne, Victoria, Australia. <sup>6</sup>Department of Preventive Medicine, Keck School of Medicine, University of Southern California Norris Comprehensive Cancer Center, Los Angeles, California. <sup>7</sup>Department of Gynaecological Oncology, Crown Princess Mary Cancer Centre and Westmead Institute for Cancer Research, University of Sydney at Westmead Millennium Institute, Westmead Hospital, Sydney NSW, Australia. <sup>8</sup>Division of Cancer Epidemiology and Genetics, National Cancer Institute, Rockville, Maryland. <sup>9</sup>University of Edinburgh Cancer Research UK Centre, MRC IGMM, Edinburgh, United Kingdom. <sup>10</sup>Ninewells Hospital and Medical School, Dundee, United Kingdom. <sup>11</sup>Women's Cancer Program at the Samuel Oschin Comprehensive Cancer Institute, Cedars-Sinai Medical Center, Los Angeles, California. <sup>12</sup>Departments of Cancer Epidemiology and Oncology,

Lund University, Lund, Sweden. <sup>13</sup>Royal Marsden NHS Foundation Trust, London, United Kingdom. <sup>14</sup>Human Genetics Group and Human Genotyping Unit Spanish National Cancer Research Centre (CNIO), Madrid, Spain. <sup>15</sup>Lunenfeld-Tanenbaum Research Institute, Mount Sinai Hospital; Departments of Molecular Genetics and Laboratory Medicine and Pathobiology, University of Toronto, Ontario, Canada. <sup>16</sup>Laboratory Medicine Program, University Health Network; Department of Laboratory Medicine and Pathobiology, University of Toronto, Ontario, Canada. <sup>17</sup>Hereditary Cancer Program, Catalan Institute of Oncology, L'Hospitalet, Barcelona, Spain. <sup>18</sup>Department of Health Research and Policy-Epidemiology, Stanford University School of Medicine, Stanford, California. <sup>19</sup>Immunology and Molecular Oncology Unit, Istituto Oncologico Veneto IOV-IRCCS, Padua, Italy. <sup>20</sup>Gertner Institute for Epidemiology and Health Policy Research, Sheba Medical Center, Tel Hashomer, Israel. <sup>21</sup>The Hong Kong Hereditary Breast Cancer Family Registry, Cancer Genetics Center, Hong Kong, Hong Kong. <sup>22</sup>Department of Virus, Lifestyle and Genes, Danish Cancer Society Research Center, Copenhagen, Denmark. <sup>23</sup>Molecular Unit, Department of

### Translational Relevance

Previous studies show consistent association between *BRCA1* or *BRCA2* germline mutations and improved 5-year survival rate in ovarian cancer. However, recent studies suggested that this survival advantage did not persist after 5 years. This is a large and comprehensive study, which has investigated the role of *BRCA1/2* status on long-term survival of patients with ovarian cancer. We confirmed the HRs for death associated with *BRCA1/2* germline mutations is lower than 1.0 at diagnosis, however, it increases over time. These findings were independent of other clinical prognostic factors, including histologic subtype. These results are of fundamental importance for counseling patients about their prognosis and in interpreting results of clinical trials involving *BRCA1/2* carriers.

### Introduction

Epithelial ovarian cancer (EOC) is the most fatal gynecologic malignancy, resulting in about 140,000 deaths worldwide per year (1). EOC is a heterogeneous disease with multiple histopathologic subtypes that is usually treated using a combination of cytoreductive surgery and platinum-based chemotherapy (2). However, women often present with advanced-stage disease and the prognosis is generally poor. Clinical management of the disease might be improved by a more personalized approach to treatment based on likely treatment response.

Germline mutations in *BRCA1* and *BRCA2* are associated with a high risk of EOC, predominantly of the high-grade serous subtype (HGSOC). Mutations in these genes account for 5% to 15% of all cases of EOC (3–6). There is substantial evidence that patients with HGSOC with *BRCA1* or *BRCA2* germline mutations have better short-term survival than noncarriers (6, 7), but recent studies suggested that this survival advantage did not persist after 5 years (8, 9).

We have recently sequenced *BRCA1* and *BRCA2* in 2 large EOC case series to estimate the contribution of these genes to EOC in the general population (10). Long-term outcome data were also available for these cases. In the study reported by Bolton and colleagues (7), cause-specific mortality data were not available, those analyses had been restricted to the first 5 years after diagnosis when it was assumed that most deaths would be due to ovarian cancer. Alsop and colleagues con-

sidered disease-specific mortality with 5.3 years of median follow-up (6). However, long-term all-cause mortality data are also available for both studies. The aim of the current analysis was to determine the effect of *BRCA1* and *BRCA2* mutation status on long-term survival in women with EOC.

### Patients and Methods

#### Patients

We used survival time data for 6,556 EOC cases from 27 studies. Two case-control studies, the population-based SEARCH study ( $n = 1,419$ ) and the clinic-based Mayo clinic study ( $n = 823$ ), were screened for deleterious mutations in *BRCA1* and *BRCA2* using multiplexed 48.48 Fluidigm access arrays for targeted sequence library preparation followed by sequencing on an Illumina HiScan sequencer (10). In addition, we used extended survival time data for 3,325 cases previously reported by Bolton and colleagues (7) and for 989 cases from the Australian Ovarian Cancer Study (AOCS; ref. 6). Some cases from SEARCH and the Mayo Clinic study were included in the Bolton and colleagues analysis. These duplicates excluded for this analysis. The number of individuals by *BRCA* status and references describing each study design is given in Supplementary Table S1.

We considered protein-truncating insertion/deletion variants, consensus splice-site variants, and missense variants with reported damaging effect on protein function to be deleterious. For the purpose of our analysis, *BRCA1* and *BRCA2* mutation status were recorded simply as mutation-positive or -negative, with no distinction between different mutation types by location or functional effect.

#### Statistical analysis

We used standard Cox regression with a primary endpoint of death from all cause for the survival analysis. Survival time was from the date of diagnosis until the date of death. For the 3,075 cases from 12 studies with cause of death available, we used Fine and Gray competing risks regressions to predict 10-year probability of death from ovarian cancer subdistribution HRs (SHR) for ovarian cancer. The Fine and Gray model is a multivariable time-to-event model, which accounts for the fact that individuals can only have one competing event. The model also accounts for censoring among those who do not have an event during follow-up (11). Participants were recruited at a variable time after diagnosis, which was allowed for in the analyses by treating time at risk from the date of recruitment (left truncation). This

Pathology, Herlev Hospital, University of Copenhagen, Copenhagen, Denmark. <sup>24</sup>Department of Population Sciences, Beckman Research Institute of the City of Hope, Duarte, California. <sup>25</sup>University of California San Francisco, Cancer Risk Program, San Francisco, California. <sup>26</sup>Department of Clinical Genetics, Fox Chase Cancer Center, Philadelphia, Pennsylvania. <sup>27</sup>Department of Cancer Prevention and Control, Roswell Park Cancer Institute, Buffalo, New York. <sup>28</sup>Departments of Internal Medicine and Molecular Virology, Immunology, and Medical Genetics, The Comprehensive Cancer Center, Ohio State University, Columbus, Ohio. <sup>29</sup>VIB Vesalius Research Center, University of Leuven, Leuven, Belgium. <sup>30</sup>Departments of Oncology and Radiology, Cambridge University Hospitals Foundation Trust, Cambridge, United Kingdom. <sup>31</sup>CR-UK Cambridge Institute, University of Cambridge; NIHR Cambridge Biomedical Research Centre, Cambridge, United Kingdom. <sup>32</sup>Cambridge Experimental Cancer Medicine Centre, Cam-

bridge, United Kingdom. <sup>33</sup>Department of Medical Genetics, University of Cambridge, Cambridge, United Kingdom. <sup>34</sup>QIMR Berghofer Medical Research Institute, Herston, Australia.

**Note:** Supplementary data for this article are available at Clinical Cancer Research Online (<http://clincancerres.aacrjournals.org/>).

**Corresponding Author:** Paul D.P. Pharoah, Departments of Oncology and Public Health and Primary Care, University of Cambridge, Strangeways Research Laboratory, Worts Causeway, Cambridge CB1 8RN, United Kingdom. Phone: 44-1223761926; Fax: 44-1223761931; E-mail: paul.pharoah@srl.cam.ac.uk

**doi:** 10.1158/1078-0432.CCR-14-2497

©2014 American Association for Cancer Research.

results in an unbiased estimate of the HR provided the proportional hazard assumption is valid (12). In preliminary analyses, tests of the proportional hazards assumption using Schoenfeld residuals showed that the assumption was seriously violated for both *BRCA1* and *BRCA2*, which would be expected if the HR changes over time as suggested by McLaughlin and colleagues (8). We therefore modeled the HRs for *BRCA1* and *BRCA2* by treating them as time-varying covariates such that the log HR varies linearly with time. The HR at time *t* is then given by

$$HR(t) = \exp(\beta x + \delta xt)$$

where *x* is the predictor variable (*BRCA1* or *BRCA2* status),  $\beta$  is the  $\beta$  coefficient, and  $\delta$  is the time-varying coefficient. Under the proportional hazards assumption,  $\delta$  equals zero.

All analyses were stratified by year of diagnosis (before 1990; 1990–1995; 1996–1999; 2000 and after) and study. The covariates in multivariable models were age at diagnosis (measured in years), clinical stage [localized (IA, IB), regional (IC and II), and distant (III/IV)], histopathologic grade (low = grade I/well-differentiated or high = grade II/grade III/poorly differentiated), and morphologic subtype (serous or nonserous).

There was missing data for a substantial proportion of cases for stage (12%) and grade (17%). Multiple imputation has been shown to be the method for the handling of missing data that is least likely to be biased across a wide range of assumptions. We therefore imputed 20 complete datasets for each study using multivariate imputation by chained equations (13). The imputation model included *BRCA1* and *BRCA2* mutation status, year of diagnosis, age at diagnosis, morphologic subtype, outcome, time of follow-up, and study. Each imputed data set was analyzed separately and the parameter estimates were combined according to "Rubin's rules" (14).

Differences in time elapsed from diagnosis to entry in study, follow-up time, year of diagnosis, proportion of deaths from ovarian cancer, tumor histology, grade, stage, and age at diagnosis were tested using *t* and  $\chi^2$  tests.

Statistical analysis was conducted using STATA/SE version 13 (StataCorp).

## Results

The characteristics of the patients are shown in Table 1. In the SEARCH case series, there were 41 *BRCA1* mutation carriers, 59 *BRCA2* mutation carriers, and 1,319 cases without a mutation in either gene. In the Mayo Clinic case series, there were 38 *BRCA1* mutation carriers, 27 *BRCA2* mutation carriers, and 758 cases without a mutation in either gene. In the AOCs case series, there were 89 *BRCA1* mutation carriers, 54 *BRCA2* mutation carriers, and 846 cases without a mutation in either gene (6). There were 890 *BRCA1* carriers, 298 *BRCA2* carriers, and 2,137 noncarriers from the study previously published by Bolton and colleagues (7).

The crude 5-year overall survival rate was 42% [95% confidence interval (CI), 41%–44%] for noncarriers, 45% (95% CI, 41%–48%) for *BRCA1* carriers, and 54% (95% CI, 48%–59%) for *BRCA2* carriers. The 10-year overall survival rate was 30% (95% CI, 28%–31%) for noncarriers, 25% (95% CI, 22%–28%) for *BRCA1* carriers, and 35% (95% CI, 30%–41%) for *BRCA2* carriers (Fig. 1). On the basis of the multivariable analysis of the imputed data, the HR for *BRCA1* at time zero (*t*<sub>0</sub>) was 0.53 (0.43–0.66, *P* < 0.001) which increased significantly with time (coefficient for time-by-covariate interaction = 1.14; 95% CI, 1.08–1.20, *P* < 0.001; Table 2). The HR for *BRCA1* positivity at time *t* is thus given by the formula

$$HR(t) = \exp(-0.63 + 0.13t)$$

This means that the HR for *BRCA1* is less than one from *t* = 0 to *t* = 4.8 years and is greater than one after *t* = 4.8 years.

The multivariable-adjusted HR for *BRCA2* at *t*<sub>0</sub> was 0.42 (0.30–0.59, *P* < 0.001) and this increased significantly with time (coefficient for time-by-covariate interaction = 1.09; 95% CI, 1.01–1.19, *P* = 0.048; Table 2). The HR for *BRCA2* positivity at time *t* is thus given by the formula

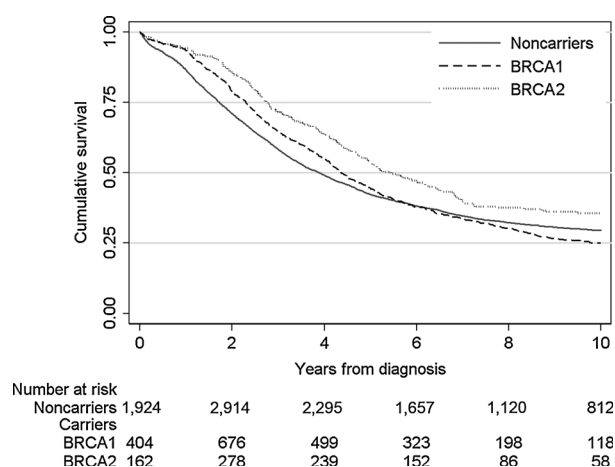
$$HR(t) = \exp(-0.87 + 0.08t)$$

This means that the HR for *BRCA2* is less than one from *t* = 0 to *t* = 10.5 years and is greater than one after *t* = 10.5 years. The

**Table 1.** Characteristics of study participants

Characteristic	Noncarriers (n = 5,060)	<i>BRCA1</i> mutation (n = 1,058)	<i>BRCA2</i> mutation (n = 438)
	n (%)	n (%)	n (%)
Histology			
Serous	3,052 (65)	553 (73)	254 (77)
Mucinous	271 (6)	5 (0.7)	1 (0.3)
Endometrioid	587 (12)	91 (12)	27 (8)
Clear cell	306 (6)	14 (2)	7 (2)
Mixed cell	150 (3)	8 (1)	7 (2)
Other	345 (7)	82 (11)	32 (10)
Unknown	349 (—)	305 (—)	110 (—)
Grade			
Low	491 (11)	19 (2)	13 (4)
High	3,778 (88)	801 (98)	331 (96)
Unknown	791 (—)	238 (—)	94 (—)
Stage			
Localized	967 (21)	97 (12)	29 (8)
Regional	818 (18)	101 (12)	55 (15)
Distant	2,808 (61)	622 (76)	274 (76)
Unknown	467 (—)	238 (—)	80 (—)
Age at EOC diagnosis, mean (SD), y	59 (11)	52 (10)	59 (10)

NOTE: The cases with unknown histology, grade, and stage were not included in the calculation of proportions.



**Figure 1.** Kaplan-Meier estimates of cumulative survival according to BRCA1/2 mutation status.

HRs for the complete case analysis were similar to those for the analysis of the imputed data but, as expected, the SEs of the HR estimates were larger and the findings less significant (Supplementary Table S2).

We also analyzed a subset of 3,075 cases (256 BRCA1 mutation carriers, 168 BRCA2 mutation carriers, and 2,651 cases without a mutation in either gene) for whom cause of death was available. There were 147 (5.5%) non-ovarian cancer deaths among noncarriers, 10 (3.9%) among BRCA1 carriers, and 7 (4.2%) among BRCA2 carriers. On the basis of the competing risks, regressions analysis of the imputed data, the SHRs at  $t_0$  were 0.42 (0.30–0.60,  $P < 0.001$ ) for BRCA1 carriers and 0.34 (0.22–0.54,  $P < 0.001$ ) for BRCA2 carriers. The coefficients for time-by-covariate interaction were 1.19 (1.10–1.29,  $P < 0.001$ ) for BRCA1 carriers and 1.16 (1.05–1.28,  $P = 0.005$ ) for BRCA2 carriers. The SHRs were greater than 1 after 4.9 years for BRCA1 and after 7.3 years for BRCA2 (Supplementary Tables S3 and S4).

Ovarian cancer in BRCA1 and BRCA2 carriers is usually the high-grade serous subtype. We therefore repeated these analyses for all-cause mortality restricting the data to the subset of 3,202 HGSOE cases (470 BRCA1 mutation carriers, 216 BRCA2 mutation carriers, and 2,516 cases without a mutation in either gene). On the basis of the multivariable analysis of the imputed data, the HRs at  $t_0$  were 0.51 (0.38–0.68,  $P < 0.001$ ) for BRCA1 carriers and 0.34 (0.22–0.54,  $P < 0.001$ ) for BRCA2 carriers. The coefficients for time-by-covariate interaction were 1.15

(1.07–1.23,  $P < 0.001$ ) for BRCA1 carriers and 1.12 (1.002–1.24,  $P = 0.045$ ) for BRCA2 carriers. The HRs were greater than 1 after 4.9 years for BRCA1 and after 9.7 years for BRCA2 carriers (Supplementary Tables S5 and S6).

## Discussion

Consistent with previously published studies (8), (15–17), we found that patients with EOC carrying BRCA1 or BRCA2 mutations have better short-term survival (5 years) than noncarriers. This survival advantage was lost over time, and after approximately 5 years, BRCA1 carriers had a higher risk of dying than noncarriers. Also, consistent with the generally better short-term survival of BRCA2 carriers compared with germline BRCA1 mutation carriers, a survival advantage persisted longer in BRCA2 patients and did not cross-over with noncarriers until approximately 9 years after diagnosis.

The large sample size of the current study, including previously unpublished data on 165 BRCA1 or BRCA2 mutation carriers and 2,077 noncarriers in addition to data on 4,714 cases that were previously published as part of an analysis of short-term survival, is a major strength of the current analysis. The large sample size allowed us to analyze data from the subset of patients with high-grade serous cancer, thereby excluding low-grade cases that can have more indolent disease and are less likely to carry mutations in BRCA1 or BRCA2. Hence, it is unlikely that contamination by low-grade tumors, which may have been simply cured surgically, contributed to the favorable long-term survival of noncarriers.

We have no information on recurrence for a large number of the cases and cause of death was not available for 15 studies (3,481 cases); consequently, primary analyses were based on all-cause mortality. The proportion of deaths from causes other than ovarian cancer was small in the studies with data on cause-specific mortality, as has been reported in other ovarian cancer case series (18). It is likely that the majority of deaths occurring in the first 5 years after diagnosis were due to ovarian cancer and so any misclassification will have been minimal. The comparison of all-cause mortality by BRCA1 and BRCA2 carrier status over the long term may not reflect differences in ovarian cancer specific mortality if non-ovarian cancer mortality also differs between carriers and noncarriers. This is likely to be true as carriers are also at increased risk of other cancers. However, over the longer term, competing causes of mortality become more important. We therefore performed an analysis restricting the data to those cases with information on cause-specific mortality using an analytic approach that allows for competing risks. The findings were

**Table 2.** Ten years' estimated HRs for death in patients with ovarian cancer

Variable (reference)	Conventional Cox model		Cox model with time-varying effect	
	HR (95% CI)	P	HR (95% CI)	P
Age (per year)	1.02 (1.02–1.02)	<0.001	1.02 (1.02–1.02)	<0.001
Grade (ref: low)	1.66 (1.40–1.96)	<0.001	1.64 (1.38–1.94)	<0.001
Regional (ref: localized)	2.89 (2.41–3.47)	<0.001	2.87 (2.40–2.44)	<0.001
Distant (ref: localized)	6.64 (5.58–7.90)	<0.001	6.59 (5.54–7.84)	<0.001
Serous (ref: nonserous)	1.08 (0.99–1.17)	0.10	1.07 (0.98–1.17)	0.13
BRCA1 (ref: noncarriers)	0.83 (0.74–0.93)	0.002	0.53 (0.43–0.66)	<0.001
BRCA2 (ref: noncarriers)	0.55 (0.47–0.65)	<0.001	0.42 (0.30–0.59)	<0.001
BRCA1*_t			1.14 (1.08–1.20)	<0.001
BRCA2*_t			1.09 (1.01–1.18)	0.048

\*\_t, time-varying HR.

broadly similar to the results for all-cause mortality suggesting that differences in non-ovarian cancer mortality do not account for the time-dependent effect for *BRCA1* and *BRCA2* carriers.

The primary studies are heterogeneous in design and patient management is likely to have varied substantially across studies. This heterogeneity is a strength, as it suggests that our findings are robust and generalizable. However, lack of detailed data on treatment limits our ability to investigate interactions between mutation status and specific treatments. In particular, investigation of hypotheses regarding revertant mutations or intratumoral heterogeneity need detailed progression-free survival and response data. These data may be available in the future from retrospective analysis of large multicentre trials such as ICON7 and ICON8.

Exclusion of important prognostic factors from a Cox model may result in other variables behaving as time-varying covariates (19). Our findings may therefore be due to the fact that we did not include residual disease as a covariate in the prognostic models (these data were not available in our case series). However, simulations excluding other important prognostic variables, such as clinical stage, had little impact on the magnitude of the coefficients for the time-dependent effects (data not shown), suggesting that exclusion of other covariates is unlikely to be an explanation for our findings.

The reasons why *BRCA1/2* carriers have only a short-term survival advantage are not clear. However, while 10 years' survival may reflect the cure from their disease, 5-year survival would allow for a proportion of patients who are still alive with incurable disease. *BRCA1* and *BRCA2* are important in double-strand break DNA repair by homologous recombination (20, 21) and cell lines deficient in *BRCA1* and *BRCA2* function are more sensitive to platinum (22, 23). Furthermore, presence of germline and somatic homologous recombination mutations is predictive of primary platinum sensitivity in women with EOC (24). Carrier status may initially segregate those patients with platinum sensitivity from patients with high-grade serous cancer whose tumors lack homologous recombination defects, such as those with *CCNE1* amplification (25), who are frequently resistant to primary therapy and have poor outcomes (26).

Intragenic reversion of germline alleles that restore *BRCA1* and *BRCA2* function in tumor cell lines (27) and in recurrent ovarian carcinomas (28) has been observed and it is possible that this is associated with a time-dependent loss of the survival advantage associated with germline mutation. A minority of patients with HGSC achieve long-term remissions following optimal debulking surgery and chemotherapy, where presumably adjuvant treatment is able to successfully eradicate any cancer repopulating cells remaining after surgery. Our findings may reflect differences between carriers and noncarriers in the abundance of cancer stem cells or the ability of those cells to be ablated by adjuvant treatment or host immunologic factors. Indeed, expansion of the breast luminal progenitor population is observed in *BRCA1* mutation carriers (29), suggesting that partial loss of HR function can influence the stem cell kinetics. Intratumor genetic heterogeneity at the time of primary treatment may comprise an alternative mechanism for acquired platinum resistance.

Despite the advances in the understanding of the genetics and biology of ovarian cancer during the past 10 years, the clinical management of the disease remains challenging. Our findings confirm that germline genotype is an important predictor of response to treatment in both the short- and long-term and

emphasizes the need to identify novel approaches to the management of the disease that target the underlying biology.

### Disclosure of Potential Conflicts of Interest

A. de Fazio reports receiving speakers bureau honoraria from Roche and is a consultant/advisory board member for AstraZeneca. S. Neuhausen reports receiving royalties from the University of Utah on patents related to discoveries of *BRCA1* and *BRCA2*. R. Nussbaum provided expert testimony for Ambyon on patent infringement and Ariosa on patenting the use of cell-free DNA in maternal serum to make inferences about fetus. No potential conflicts of interest were disclosed by the other authors.

### Authors' Contributions

**Conception and design:** F.J. Candido-dos-Reis, E.L. Goode, B. Karlan, C. Lazaro, S. Sadetzki, M. Tischkowitz, D.F. Easton, G. Chenevix-Trench, P.D.P. Pharoah

**Development of methodology:** I. Cass, S. Sadetzki, P.D.P. Pharoah

**Acquisition of data (provided animals, acquired and managed patients, provided facilities, etc.):** H. Song, J.M. Cunningham, K. Alsop, P. Harrington, S.J. Ramus, A. de Fazio, G. Mitchell, S. Fereday, K.L. Bolton, C. Gourley, C. Michie, B. Karlan, J. Lester, C. Walsh, I. Cass, H. Olsson, M. Gore, J.J. Benitez, M.J. Garcia, I. Andrulis, A.M. Mulligan, G. Glendon, I. Blanco, C. Lazaro, V. McGuire, M. Montagna, E. Alducci, S. Sadetzki, A. Chetrit, A. Kwong, S.K. Kjaer, A. Jensen, S. Neuhausen, R. Nussbaum, M. Daly, M.H. Greene, P.L. Mai, J.T. Loud, K. Moysich, A.E. Toland, D. Lambrechts, S. Ellis, D. Frost, D.F. Easton, A. Antoniou, G. Chenevix-Trench, S.A. Gayther, D. Bowtell, P.D.P. Pharoah

**Analysis and interpretation of data (e.g., statistical analysis, biostatistics, computational analysis):** F.J. Candido-dos-Reis, H. Song, B.L. Fridley, M.C. Larson, E. Dicks, C. Gourley, B. Karlan, C. Lazaro, W. Sieh, S. Sadetzki, K. Moysich, D. Lambrechts, J.D. Brenton, P.D.P. Pharoah

**Writing, review, and/or revision of the manuscript:** F.J. Candido-dos-Reis, H. Song, E.L. Goode, J.M. Cunningham, M.C. Larson, K. Alsop, P. Harrington, S.J. Ramus, A. de Fazio, G. Mitchell, K.L. Bolton, C. Gourley, C. Michie, B. Karlan, C. Walsh, I. Cass, H. Olsson, M. Gore, J.J. Benitez, I. Andrulis, G. Glendon, I. Blanco, C. Lazaro, A.S. Whittemore, V. McGuire, W. Sieh, S. Sadetzki, A. Kwong, S.K. Kjaer, A. Jensen, E. Hogdall, S. Neuhausen, R. Nussbaum, M. Daly, M.H. Greene, P.L. Mai, K. Moysich, A.E. Toland, J.D. Brenton, M. Tischkowitz, D.F. Easton, A. Antoniou, G. Chenevix-Trench, S.A. Gayther, D. Bowtell, P.D.P. Pharoah

**Administrative, technical, or material support (i.e., reporting or organizing data, constructing databases):** M.C. Larson, E. Dicks, P. Harrington, S.J. Ramus, S. Fereday, A. Chetrit, E. Hogdall, M. Daly, J.T. Loud, K. Moysich, S. Ellis

**Study supervision:** S.K. Kjaer, R. Nussbaum, J.T. Loud

### Acknowledgments

The authors thank Craig Luccarini, the staff at the Eastern Cancer Registration and Information Centre (SEARCH); Alicia Barroso, Victoria Fernandez, Miguel Urioste; Spanish Network on Rare Diseases (CIBERER); Heather Thorne, Eveline Niedermayr, all the kConFab research nurses and staff, the heads and staff of the Family Cancer Clinics, the Clinical Follow-Up Study Members, and the kConFab Investigators (Peter MacCallum Cancer Center, East Melbourne, Australia; Stephen Fox, MD; Ian Campbell, PhD; Melissa Brown, PhD; Gerda Evans; Judy Kirk; Westmead Hospital, MD, PhD; Sunil Lakhani, MD; Geoff Lindeman, MD, PhD; Gillian Mitchell, MD, PhD; Kelly Phillips, MD; Melanie Price, PhD; Christobel Saunders, MD; Mandy Spurdle, PhD; Graeme Suthers, MD, PhD; Roger Milne, PhD) (kConFab/AOCS); Nayana Weerasooriya, Teresa Selander. A full list of principal investigators and participating centers for EMBRACE has been published (Hum Mol Genet 2010;19:2886-97).

### Grant Support

F.J. Candido-dos-Reis was funded by the São Paulo Research Foundation (FAPESP). The contributing studies were funded by grants from The American Cancer Society Early Detection Professorship (SIOP-06-258-01-COUN); Asociación Española Contra el Cáncer; Cancer Australia (509303); the Cancer Council Victoria; the Cancer Council Queensland, the Cancer Council New South Wales; Cancer Research UK (C490/A10119, C490/A10124, C490/A16561); Carlos III Health Institute; Catalan Health Institute and Autonomous Government of Catalonia. (ISCIIRETIC RD06/0020/105, PI10/01422,

PI10/31488, 2009SGR290); the European Research Council (310018, 2011-294576); the Mermaid Project (Mermaid 1); Ministero della Salute of Italy "5×1000" fund; the National Breast Cancer Foundation of Australia; National Cancer Institute (UM1CA164920, R01CA178535, R01CA61107, U01CA71966, R01CA16056, K07CA143047, and U01CA69417, P50CA136393, R01CA122443); the NIHR Biomedical Research Centres at the University of Cambridge and the Royal Marsden NHS Foundation Trust and Institute of Cancer Research; the National Health and Medical Research Council of Australia (400281, 400413); Ovarian Cancer Research Program of the US Department of Defense (W81XWH-08-1-0684 and W81XWH-08-1-0685); the Peter MacCallum Cancer Centre Foundation; Scottish Funding

Council; the Seventh Framework Programme of the European Union (FP/2007-2013); Swedish Cancer Society; Spanish Health Research Fund; Swedish Research Council; the University of Sydney Cancer Research Fund; and U.S. Army Medical Research and Materiel Command (DAMD17-01-1-0729).

The costs of publication of this article were defrayed in part by the payment of page charges. This article must therefore be hereby marked *advertisement* in accordance with 18 U.S.C. Section 1734 solely to indicate this fact.

Received September 26, 2014; revised October 23, 2014; accepted October 25, 2014; published OnlineFirst November 14, 2014.

## References

1. Ferlay J, Shin HR, Bray F, Forman D, Mathers C, Parkin DM. Estimates of worldwide burden of cancer in 2008: GLOBOCAN 2008. *Int J Cancer* 2010;127:2893–917.
2. Ledermann JA, Raja FA, Fotopoulou C, Gonzalez-Martin A, Colombo N, Sessa C, et al. Newly diagnosed and relapsed epithelial ovarian carcinoma: ESMO Clinical Practice Guidelines for diagnosis, treatment and follow-up. *Ann Oncol* 2013;24:vi24–vi32.
3. Zhang S, Royer R, Li S, McLaughlin JR, Rosen B, Risch HA, et al. Frequencies of BRCA1 and BRCA2 mutations among 1,342 unselected patients with invasive ovarian cancer. *Gynecol Oncol* 2011;121:353–7.
4. Pal T, Permeth-Wey J, Betts JA, Krischer JP, Fiorica J, Arango H, et al. BRCA1 and BRCA2 mutations account for a large proportion of ovarian carcinoma cases. *Cancer* 2005;104:2807–16.
5. Soegaard M, Kjaer SK, Cox M, Wozniak E, Hogdall E, Hogdall C, et al. BRCA1 and BRCA2 mutation prevalence and clinical characteristics of a population-based series of ovarian cancer cases from Denmark. *Clin Cancer Res* 2008;14:3761–7.
6. Alsop K, Fereday S, Meldrum C, deFazio A, Emmanuel C, George J, et al. BRCA mutation frequency and patterns of treatment response in BRCA mutation-positive women with ovarian cancer: a report from the Australian Ovarian Cancer Study Group. *J Clin Oncol* 2012;30:2654–63.
7. Bolton KL, Chenevix-Trench G, Goh C, Sadetzki S, Ramus SJ, Karlan BY, et al. Association between BRCA1 and BRCA2 mutations and survival in women with invasive epithelial ovarian cancer. *JAMA* 2012;307:382–90.
8. McLaughlin JR, Rosen B, Moody J, Pal T, Fan I, Shaw PA, et al. Long-term ovarian cancer survival associated with mutation in BRCA1 or BRCA2. *J Natl Cancer Inst* 2013;105:141–8.
9. Cunningham JM, Cicek MS, Larson NB, Davila J, Wang C, Larson MC, et al. Clinical characteristics of ovarian cancer classified by BRCA1, BRCA2, and RAD51C status. *Sci Rep* 2014;4:4026.
10. Song H, Cicek MS, Dicks E, Harrington P, Ramus SJ, Cunningham JM, et al. The contribution of deleterious germline mutations in BRCA1, BRCA2 and the mismatch repair genes to ovarian cancer in the population. *Hum Mol Genet* 2014;23:4703–9.
11. Fine JP, Gray RJ. A proportional hazards model for the subdistribution of a competing risk. *J Am Stat Assoc* 1999;94:496–509.
12. Keiding N. Delayed Entry. *Encyclopedia of biostatistics*: John Wiley & Sons, Ltd; 2005.
13. White IR, Royston P, Wood AM. Multiple imputation using chained equations: issues and guidance for practice. *Stat Med* 2011;30:377–99.
14. Rubin DB. Inference and missing data. *Biometrika* 1976;63:581–92.
15. Chetrit A, Hirsh-Yechezkel G, Ben-David Y, Lubin F, Friedman E, Sadetzki S. Effect of BRCA1/2 mutations on long-term survival of patients with invasive ovarian cancer: the national Israeli study of ovarian cancer. *J Clin Oncol* 2008;26:20–5.
16. Cass I, Baldwin RL, Varkey T, Moslehi R, Narod SA, Karlan BY. Improved survival in women with BRCA-associated ovarian carcinoma. *Cancer* 2003;97:2187–95.
17. Boyd J, Sonoda Y, Federici MG, Bogomolnii F, Rhei E, Maresco DL, et al. Clinicopathologic features of BRCA-linked and sporadic ovarian cancer. *JAMA* 2000;283:2260–5.
18. Thomson CA, E Crane T, Wertheim BC, Neuhaus ML, Li W, Snetelaar LG, et al. Diet quality and survival after ovarian cancer: results from the Women's Health Initiative. *J Natl Cancer Inst* 2014;106. pii: dju314.
19. Schumacher M, Olschewski M, Schmoor C. The impact of heterogeneity on the comparison of survival times. *Stat Med* 1987;6:773–84.
20. Yuan SS, Lee SY, Chen G, Song M, Tomlinson GE, Lee EY. BRCA2 is required for ionizing radiation-induced assembly of Rad51 complex in vivo. *Cancer Res* 1999;59:3547–51.
21. Bhattacharyya A, Ear US, Koller BH, Weichselbaum RR, Bishop DK. The breast cancer susceptibility gene BRCA1 is required for subnuclear assembly of Rad51 and survival following treatment with the DNA cross-linking agent cisplatin. *J Biol Chem* 2000;275:23899–903.
22. Samouelian V, Maugard CM, Jolicoeur M, Bertrand R, Arcand SL, Tonin PN, et al. Chemosensitivity and radiosensitivity profiles of four new human epithelial ovarian cancer cell lines exhibiting genetic alterations in BRCA2, TGFbeta-RII, KRAS2, TP53 and/or CDKN2A. *Cancer Chemother Pharmacol* 2004;54:497–504.
23. Husain A, He G, Venkatraman ES, Spriggs DR. BRCA1 up-regulation is associated with repair-mediated resistance to cis-diamminedichloroplatinum(II). *Cancer Res* 1998;58:1120–3.
24. Pennington KP, Walsh T, Harrell MI, Lee MK, Pennil CC, Rendi MH, et al. Germline and somatic mutations in homologous recombination genes predict platinum response and survival in ovarian, fallopian tube, and peritoneal carcinomas. *Clin Cancer Res* 2014;20:764–75.
25. Network CGAR. Integrated genomic analyses of ovarian carcinoma. *Nature* 2011;474:609–15.
26. Etemadmoghadam D, deFazio A, Beroukhim R, Mermel C, George J, Getz G, et al. Integrated genome-wide DNA copy number and expression analysis identifies distinct mechanisms of primary chemoresistance in ovarian carcinomas. *Clin Cancer Res* 2009;15:1417–27.
27. Sakai W, Swisher EM, Karlan BY, Agarwal MK, Higgins J, Friedman C, et al. Secondary mutations as a mechanism of cisplatin resistance in BRCA2-mutated cancers. *Nature* 2008;451:1116–20.
28. Norquist B, Wurz KA, Pennil CC, Garcia R, Gross J, Sakai W, et al. Secondary somatic mutations restoring BRCA1/2 predict chemotherapy resistance in hereditary ovarian carcinomas. *J Clin Oncol* 2011;29:3008–15.
29. Lim E, Vaillant F, Wu D, Forrest NC, Pal B, Hart AH, et al. Aberrant luminal progenitors as the candidate target population for basal tumor development in BRCA1 mutation carriers. *Nat Med* 2009;15:907–13.