

Population Distribution of Lifetime Risk of Ovarian Cancer in the United States

Celeste Leigh Pearce^{1,2}, Daniel O. Stram², Roberta B. Ness³, Douglas A. Stram², Lynda D. Roman⁴, Claire Templeman⁴, Alice W. Lee², Usha Menon⁵, Peter A. Fasching^{6,7}, Jessica N. McAlpine⁸, Jennifer A. Doherty⁹, Francesmary Modugno^{10,11,12}, Joellen M. Schildkraut^{13,14}, Mary Anne Rossing^{15,16}, David G. Huntsman¹⁷, Anna H. Wu², Andrew Berchuck¹⁸, Malcolm C. Pike^{2,19}, and Paul D.P. Pharoah^{20,21}

Abstract

Background: In U.S. women, lifetime risk of ovarian cancer is 1.37%, but some women are at a substantially lower or higher risk than this average.

Methods: We have characterized the distribution of lifetime risk in the general population. Published data on the relative risks and their variances for five well-accepted risk and protective factors for ovarian cancer, oral contraceptive use, parity, tubal ligation, endometriosis, and first-degree family history of ovarian cancer in conjunction with a genetic risk score using genome-wide significant common, low penetrance variants were used. The joint distribution of these factors (i.e., risk/protective factor profiles) was derived using control data from four U.S. population-based studies, providing a broad representation of women in the United States.

Results: A total of 214 combinations of risk/protective factors were observed, and the lifetime risk estimates ranged

from 0.35% [95% confidence interval (CI), 0.29–0.42] to 8.78% (95% CI, 7.10–10.9). Among women with lifetime risk ranging from 4% to 9%, 73% had no family history of ovarian cancer; most of these women had a self-reported history of endometriosis.

Conclusions: Profiles including the known modifiable protective factors of oral contraceptive use and tubal ligation were associated with a lower lifetime risk of ovarian cancer. Oral contraceptive use and tubal ligation were essentially absent among the women at 4% to 9% lifetime risk.

Impact: This work demonstrates that there are women in the general population who have a much higher than average lifetime risk of ovarian cancer. Preventive strategies are available. Should effective screening become available, higher than average risk women can be identified. *Cancer Epidemiol Biomarkers Prev*, 24(4); 671–6. ©2015 AACR.

Introduction

There were approximately 22,240 new cases of invasive epithelial ovarian cancer (ovarian cancer) and 14,030 deaths from the disease in the United States in 2013 (1). Ovarian cancer

accounts for 5% of cancer-related deaths in women with overall 5-year survival at less than 50%.

The average lifetime risk of ovarian cancer is approximately 1.37% in non-Hispanic (NH) white women in the United States, but there are women at a substantially higher and lower risk.

¹Department of Epidemiology, School of Public Health, University of Michigan, Ann Arbor, Michigan. ²Department of Preventive Medicine, Keck School of Medicine, University of Southern California, Los Angeles, California. ³School of Public Health, University of Texas, Houston, Texas. ⁴Department of Obstetrics and Gynecology, Keck School of Medicine, University of Southern California, Los Angeles, California. ⁵Women's Cancer Institute for Women's Health, University College London, United Kingdom. ⁶Department of Gynecology and Obstetrics, University Hospital Erlangen, Friedrich-Alexander-University Erlangen-Nuremberg, Comprehensive Cancer Center, Erlangen, Germany. ⁷Division of Hematology and Oncology, Department of Medicine, David Geffen School of Medicine, University of California at Los Angeles, Los Angeles, California. ⁸Division of Gynecologic Oncology, Department of Gynecology and Obstetrics, University of British Columbia, Vancouver, Canada. ⁹Section of Biostatistics and Epidemiology, Geisel School of Medicine at Dartmouth, Lebanon, New Hampshire. ¹⁰Department of Obstetrics, Gynecology, and Reproductive Sciences, University of Pittsburgh, Pittsburgh, Pennsylvania. ¹¹Department of Epidemiology, Graduate School of Public Health, University of Pittsburgh, Pittsburgh, Pennsylvania. ¹²Women's Cancer Research Program, Magee-Womens Research Institute, University of Pittsburgh Cancer Institute, Pittsburgh, Pennsylvania. ¹³Department of Community and Family Medicine, Duke University Medical Center, Durham, North Carolina. ¹⁴Cancer Prevention, Detection, and Control Research Program,

Duke Cancer Institute, Durham, North Carolina. ¹⁵Program in Epidemiology, Division of Public Health Sciences, Fred Hutchinson Cancer Research Center, Seattle, Washington. ¹⁶Department of Epidemiology, University of Washington, Seattle, Washington. ¹⁷Department of Pathology, Vancouver General Hospital, BC Cancer Agency, Vancouver, British Columbia, Canada. ¹⁸Gynecologic Cancer Program, Duke Cancer Institute, Durham, North Carolina. ¹⁹Department of Epidemiology and Biostatistics, Memorial Sloan Kettering Cancer Center, New York, New York. ²⁰Department of Oncology, University of Cambridge, Cambridge, United Kingdom. ²¹Department of Public Health and Primary Care, University of Cambridge, Cambridge, United Kingdom.

Note: Supplementary data for this article are available at Cancer Epidemiology, Biomarkers & Prevention Online (<http://cebp.aacrjournals.org/>).

M.C. Pike and P.D.P. Pharoah contributed equally to this article.

Corresponding Author: Celeste Leigh Pearce, University of Michigan, 1415 Washington Heights, SPH Tower, Office #4642, Ann Arbor, MI 48109. Phone: 734-764-3835; Fax: 323-908-6065; E-mail: lpearce@umich.edu

doi: 10.1158/1055-9965.EPI-14-1128

©2015 American Association for Cancer Research.

Approximately 10% of women who develop ovarian cancer carry high-penetrance alleles of major ovarian cancer genes, such as *BRCA1*, *BRCA2*, and others (2), that put them at a significantly higher lifetime risk of ovarian cancer.

There are also a number of personal and lifestyle factors as well as low-penetrance inherited genetic variants that affect a woman's risk for ovarian cancer. Parity, oral contraceptive pill (OCP) use, and tubal ligation are all associated with a substantial protective effect for ovarian cancer. Women with a history of endometriosis or a positive first-degree family history of ovarian cancer are at increased risk (3), and, over the past several years, 11 common SNPs have been identified which have modest influences on risk (4–10). It is thus possible to identify groups of women in the general population at a much higher or lower than average lifetime risk of ovarian cancer by taking into account all of the aforementioned factors.

Secondary prevention efforts for ovarian cancer have so far been disappointing: results from the Prostate, Lung, Colorectal and Ovarian Cancer screening trial (PLCO) yielded no mortality benefit and substantial added morbidity due to increased surgical intervention (11). Whether the encouraging preliminary results from the U.K. Collaborative Trial of Ovarian Cancer Screening will have a mortality impact is not yet known (12).

OCP use provides substantial protection against ovarian cancer; use for five or more years cuts risk in half (3, 13), and this protective effect extends for decades after use is discontinued (13). Tubal ligation also provides a substantial protective benefit (3). Salpingectomy at the time of pelvic surgery for other indications has also been considered as a strategy in low-risk women (ref. 14; <https://www.sgo.org/clinical-practice/guidelines/sgo-clinical-practice-statement-salpingectomy-for-ovarian-cancer-prevention/>). An alternative preventive strategy that is commonly chosen by women who carry a high-risk mutation in one of the known ovarian cancer predisposing genes is risk-reducing bilateral salpingo-oophorectomy (RRSO).

It is likely that some women who are at a substantially higher risk than the average lifetime risk for U.S. NH white women because of a combination of genetic and lifestyle factors may want to consider an RRSO, a tubal ligation, bilateral salpingectomy, or extended use of OCPs. The lifetime risk of ovarian cancer at which a woman might consider these preventive approaches is dependent on a risk-benefit analysis by the woman in consultation with her physician.

The aim of this study was to quantify the population distribution of lifetime risks of ovarian cancer among women in the United States based on combinations of known risk and protective factors to inform such discussions.

Materials and Methods

Relative risk estimates and standard errors for the well-accepted risk/protective factors—family history of ovarian cancer, endometriosis, parity, OCP use, and tubal ligation—were recently published by the Ovarian Cancer Association Consortium (OCAC) based on more than 5000 cases and more than 7000 controls (3). These estimates were used in the calculations presented here (ref. 3; Table 1). For presentation purposes, first-degree family history of ovarian cancer, personal history of endometriosis, and tubal ligation were each treated as dichotomous variables, whereas parity was categorized as never, one birth, and two or more births (derived via meta-analysis from data presented in ref. 3), and OCP use was categorized as never

Table 1. Relative risk estimates for the six variables used to estimate lifetime risk of ovarian cancer

Risk factor	OR (95% CI)
OCP use	
Never	1.00
1–4.99 years	0.62 (0.56–0.69)
5+ years	0.40 (0.36–0.44)
Parity	
None	1.00
1 birth	0.76 (0.66–0.88)
2+ births	0.58 (0.51–0.65)
Tubal ligation	
No	1.00
Yes	0.74 (0.67–0.83)
Endometriosis	
No	1.00
Yes	1.53 (1.30–1.81)
First-degree family history	
No	1.00
Yes	2.09 (1.70–2.57)
Genetic risk score	
Quintile 1	1.00
Quintile 2	1.25 (1.22–1.28)
Quintile 3	1.44 (1.38–1.49)
Quintile 4	1.66 (1.58–1.75)
Quintile 5	2.12 (1.99–2.27)

use, 1 to 4 years of use, and 5+ years of use (also derived via meta-analysis from data presented in ref. 3).

Eleven confirmed common susceptibility alleles for ovarian cancer have been reported (4–10). The published risk estimates for these variants are shown in Table 2. Analysis of OCAC data suggests that the relative risks associated with these genetic variants are multiplicative and independent of family history of ovarian cancer; we were therefore able to calculate a genetic risk score by multiplying the relative risks associated with each SNP and then categorized these relative risk scores into quintiles with associated standard errors (details of these calculations are given in Supplementary Methods). These quintile genetic risk score relative risks are shown in Table 1.

To determine the joint distribution of first-degree family history of ovarian cancer, endometriosis, parity, OCP use, tubal ligation, and the single genetic risk score combinations present in the U.S. population, control data from NH white women in four U.S. population-based studies [Disease of the Ovary and their Evaluation Study (DOVE), Hormones and Ovarian Cancer Prediction (HOPE), North Carolina Ovarian Cancer Study (NCOCS), and University of Southern California, Study of Lifestyle and Women's Health (USC)] were used. The DOVE study was carried out in the Seattle, Washington area from 2002 to 2009 with 1,391 controls. The HOPE study was carried out in the contiguous regions of western Pennsylvania, eastern Ohio, and western New York from 2003 to 2008 with 1,408 controls (15). The NCOCS study was carried out in North Carolina from 1999 to 2008 with 735 controls (16). The USC study was carried out in Los Angeles County from 1993 to 2008 (17, 18) with 963 controls. Control participants from the four studies were interviewed in person using slightly different standardized questionnaires, but each contained the necessary information on first-degree family history of ovarian cancer, endometriosis, parity, OCP use, and tubal ligation. The risk factor combination frequencies were thus obtained from 4,497 controls from four geographic regions of the United States.

Table 2. Eleven common genetic risk variants used to create the genetic risk score

Reference	SNP	OR (95% CI)	Chr.	Position
Bojesen et al. (4)	rs7725218 ^a	1.08 (1.05–1.12)	5	1282414
Bolton et al. (10)	rs2363956	1.10 (1.06–1.15)	19	17394124
Goode et al. (5)	rs2072590	1.16 (1.12–1.21)	2	177042633
	rs10088218	0.84 (0.80–0.89)	8	129543949
Permeth-Wey et al. (6)	rs12942666	1.11 (1.07–1.15)	17	43499839
Pharoah et al. (7)	rs7651446	1.44 (1.35–1.53)	3	156406997
	rs11782652	1.19 (1.12–1.26)	8	82653644
	rs1243180	1.10 (1.06–1.13)	10	21915619
	rs9303542	1.12 (1.08–1.16)	17	46411500
Shen et al. (8)	rs3744763	1.06 (1.03–1.10)	17	36090885
Song et al. (9)	rs3814113	0.82 (0.79–0.86)	9	16915021

^aEstimate provided by corresponding author.

The variance associated with the log relative risk from each combination was obtained by summing the variances for each factor. This approach is based on the assumption of independence of the risk estimates for each factor, which was found to hold in the DOVE, HOPE, NCOCS, and USC data (Supplementary Methods). The relative risk for each combination of risk factors is relative to the specific combination of factors that comprise the reference group (no first-degree family history, no endometriosis, nulliparous, never users of OCPs, no tubal ligation, and lowest genetic risk quintile). To convert relative risks to absolute lifetime risks, the frequency-weighted average of all the combination-specific relative risks (using the combined data observed in the NH whites from the DOVE, HOPE, NCOCS, and USC studies) was first scaled to 1.37% (see below), and then this scaling factor was applied to each combination-specific relative risk and its 95% confidence interval (CI).

The average lifetime risk of ovarian cancer by age 85 in a population of NH white women in the United States followed from birth was calculated by obtaining the age-specific all-cause mortality rates (Centers for Disease Control, CDC), ovarian cancer-specific mortality rates (Surveillance Epidemiology and End Results, SEER), and ovarian cancer incidence rates (SEER) following the adjusted for multiple primaries (AMP) approach. The calculated average lifetime risk is 1.37%.

Results

There were 360 possible combinations of risk factors based on the factors included in this analysis—family history (two levels), endometriosis (two levels), parity (three levels), OCP use (three

levels), tubal ligation (two levels), and genetic risk score (five levels)—of which 214 were observed among the 4,497 NH white controls in the DOVE, HOPE, NCOCS, and USC studies. Table 3 provides a demonstration of the multiplicative relative risks for the various combinations of risk factors.

The combination of risk factors with the lowest lifetime risk, 0.35% (95% CI, 0.29–0.42), was present in 1.4% of women, and 0.02% of women were in the highest risk group and have an estimated lifetime risk of 8.78% (95% CI, 7.10–10.85; Fig. 1). There were five combinations of risk factors, comprising 6.8% of women, with a lifetime risk of 0.5% or lower; the combinations of these risk factors are shown in Table 4. All of these combinations included women who used OCPs for 5+ years and had at least one child.

There were 17 combinations of risk factors among the 1.85% of women at a 4% or higher lifetime risk of ovarian cancer (Table 5). The path to this high lifetime risk of ovarian cancer included either a family history of ovarian cancer or a self-reported history of endometriosis (16/17 groups). More than one half of these risk groups included women in the highest genetic risk quintile (9/17). No OCP use was common among women at the highest lifetime risk (13/17). There was only one combination that did not include history of endometriosis or family history of ovarian cancer; women in this group had no protective factors and fell into the highest genetic risk quintile, resulting in a lifetime risk of 4.25% among 0.85% of the female population in the United States. Also, women without a first-degree family history of ovarian cancer made up 73% of women in the 4% to 9% lifetime risk category.

Discussion

We have used the joint distribution of confirmed, well-accepted risk and protective factors for ovarian cancer to estimate lifetime risk of ovarian cancer by age 85 for NH white women in the United States. Although the average lifetime risk of ovarian cancer among these women is approximately 1.37%, we have shown that there are many women at a substantially lower risk, and there is a group of women at much higher lifetime risk (Fig. 1). For example, a nulliparous woman in the highest genetic risk quintile, who has no family history and no history of endometriosis, but has not used an OCP and not had a tubal ligation, has a lifetime risk of 4.25% (95% CI, 3.98–4.54). If this same woman had used OCPs for 5 years or more, her lifetime risk would have been reduced to 1.71% (95% CI, 1.52–1.92).

Women who carry genetic variants that put them at an exceptionally high lifetime risk of ovarian cancer (>10%) are currently

Table 3. Examples of multiplicative relative risks across genetic risk score and personal/lifetime risk/protective factors

	Genetic risk score				
	Q1	Q2	Q3	Q4	Q5
Referent for personal/lifestyle factors	1.00	1.25	1.44	1.66	2.12
OCP use					
1–4.99 years	0.62	0.78	0.89	1.03	1.31
5+ years	0.40	0.50	0.58	0.66	0.85
Parity					
1 birth	0.76	0.95	1.09	1.26	1.61
2+ births	0.58	0.73	0.84	0.96	1.23
Tubal ligation	0.74	0.93	1.07	1.23	1.57
Endometriosis	1.53	1.91	2.20	2.54	3.24
Family history	2.09	2.61	3.01	3.47	4.43

NOTE: The relative risk for various combinations can be obtained by multiplying the relevant cells in the table. For example, to obtain the relative risk for a 5+ OCP user in Q1 genetic risk score who also has endometriosis, $0.40 \times 1.53 = 0.61$.

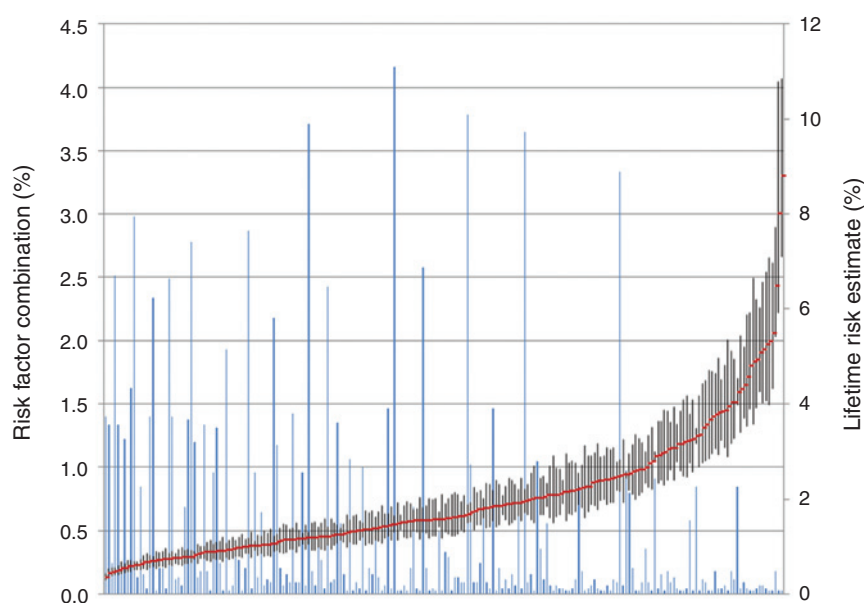


Figure 1. Distribution of the lifetime risks of ovarian cancer based on the observed combinations of the risk factors. The blue lines along the X axis represent the 214 combinations of risk factors and the height of the line the frequency of the group; the frequencies are on the left Y axis. The right Y axis gives the lifetime risk scale; the lifetime risks are indicated by the red points. The vertical black bars are the 95% CIs around the lifetime risk estimate.

offered an RRSO. However, the precise lifetime risk at which a woman would consider an RRSO is a matter to be decided by the woman in consultation with her physician. For women who are at, for example, three times the average lifetime risk of ovarian cancer (4.11% vs. 1.37%), such a discussion might be warranted. This type of discussion might be particularly relevant for a higher than average ovarian cancer risk woman who is having a hysterectomy and considering also undergoing a salpingectomy and/or oophorectomy. Further research on the impact of both of these procedures among peri- and postmenopausal women is clearly warranted in light of some findings favoring ovarian preservation (19), but there is little evidence against including a salpingectomy (but see below).

There are other prevention strategies available for younger women. OCP use provides substantial protection against ovarian cancer with 5+ years of use reducing risk by half. This effect attenuates in the decades following cessation of use, but a strong association remains over time (13). There are several issues that need to be considered related to OCP use as chemoprevention of ovarian cancer. The first is the impact on risk of other conditions such as breast cancer and venous thrombosis. Secondly, the mechanism underlying the protective effect of OCPs is unclear and a key question is whether newer generation, extended- or continuous-cycle OCPs afford the same (or less or greater) level of protection as those that were in use when this association was established.

Tubal ligation is another preventive measure that offers an approximate 25% reduction in risk; this protection is particularly

strong for endometriosis-associated ovarian cancer, namely clear cell and endometrioid subtypes (20). It has recently been reported that the age at which the procedure is performed does not affect the extent of the protection (20). The mechanism of protection for tubal ligation is also not understood.

Also, as evidence has mounted that many high-grade serous ovarian cancers, the most deadly subtype, likely arise from fallopian tube precursor lesions (21), premenopausal women having a hysterectomy could elect to have a salpingectomy. Also, salpingectomy could be considered as an alternative to a standard tubal ligation. The risks from this approach appear low (14). How this will impact a woman's ovarian cancer risk is uncertain and dependent on several factors including the portion of ovarian cancers that are derived from the fallopian tube, and the latency period of precursor lesions.

Only recently have confirmed (genome-wide significant) common susceptibility alleles been identified for ovarian cancer. The risk associated with these alleles appears to be independent of a first-degree family history of ovarian cancer (3). Armed with this SNP information, it is now possible to better define an at-risk group for ovarian cancer who might be appropriate for screening should an effective modality be identified. Calculating a woman's lifetime risk of ovarian cancer based on the factors included here is fairly straightforward as all of the variables except genetic risk score are known by the patient (endometriosis is based on self-report). An individual's relevant SNP information will soon be obtainable at reasonable cost and permit the use of the model presented here to be used.

Table 4. Frequencies and lifetime risks for the combination of risk factors that result in a lifetime risk of ovarian cancer of 0.50% or less

<0.5% lifetime risk								
OCP use	Parity	Tubal ligation	Endometriosis	Family history	Genetic risk quintile	Population frequency	Lifetime risk	Lifetime risk CI
5+ years	2+ births	Yes	No	No	1	1.40%	0.35%	0.29%–0.42%
5+ years	2+ births	Yes	No	No	2	1.33%	0.43%	0.36%–0.52%
5+ years	1 birth	Yes	No	No	1	0.24%	0.45%	0.37%–0.56%
5+ years	2+ births	No	No	No	1	2.51%	0.47%	0.40%–0.54%
5+ years	2+ births	Yes	No	No	3	1.33%	0.50%	0.41%–0.60%

Table 5. Frequencies and lifetime risks for the combination of risk factors that result in a lifetime risk of ovarian cancer of 4% or higher

4%-9% lifetime risk								
OCP use	Parity	Tubal ligation	Endometriosis	Family history	Genetic risk quintile	Population frequency	Lifetime risk	Lifetime risk CI
Never	2+ births	No	No	Yes	4	0.18%	4.03%	3.17%–5.11%
1–4 years	None	No	Yes	No	5	0.11%	4.03%	3.29%–4.94%
Never	None	No	No	No	5	0.85%	4.25%	3.98%–4.54%
1–4 years	None	No	No	Yes	4	0.04%	4.30%	3.40%–5.44%
Never	None	No	Yes	No	3	0.09%	4.40%	3.71%–5.20%
Never	1 birth	No	No	Yes	3	0.04%	4.56%	3.54%–5.87%
Never	None	Yes	Yes	No	5	0.02%	4.81%	3.91%–5.91%
1–4 years	2+ births	No	Yes	Yes	5	0.02%	4.88%	3.58%–6.65%
Never	1 birth	No	Yes	No	5	0.04%	4.93%	3.93%–6.19%
Never	None	No	Yes	No	4	0.07%	5.07%	4.27%–6.02%
Never	2+ births	No	No	Yes	5	0.07%	5.14%	4.03%–6.55%
Never	1 birth	No	No	Yes	4	0.04%	5.26%	4.08%–6.78%
Never	2+ births	No	Yes	Yes	3	0.02%	5.32%	3.99%–7.08%
1–4 years	None	No	No	Yes	5	0.02%	5.49%	4.33%–6.96%
Never	None	No	Yes	No	5	0.18%	6.47%	5.42%–7.71%
Never	1 birth	No	Yes	Yes	4	0.02%	7.99%	5.92%–10.78%
Never	None	No	No	Yes	5	0.02%	8.78%	7.10%–10.85%

Risk modeling has been used in breast cancer as well as among BRCA1/2 mutation carriers. Another important future application of these results would be identifying women for whom surveillance would be appropriate. Currently, there are no effective screening strategies for ovarian cancer; however, when effective screening measures become available, this work could be used to identify the high-risk women in the general population who should be encouraged to undergo screening.

This analysis has some limitations. To calculate the probabilities of the joint distribution of these risk factors, we used the control subjects from four geographically dispersed population-based case–controls studies to represent the United States. Also, the relative risk estimates used in these calculations were derived in part from the four case–control studies utilized in this analysis. The estimates are derived from a larger base of studies and are also in line with other published data. Because we based this analysis on published data and carried out simulations to derive the genetic risk quintiles, the variance may be underestimated, but our simulations suggest that the standard errors are reasonable. We also did not remove women who had had an oophorectomy from our U.S. population counts and thus our denominators are slightly inflated and the lifetime risks are underestimated. The data presented here relate to lifetime risk to age 85 for NH whites. Risk at younger ages is of course lower, and estimates for other racial/ethnic groups are needed. Lastly, there are likely other risk factors that contribute to lifetime risk of ovarian cancer which would influence these estimates, including menopausal estrogen therapy use, aspirin use, and possibly others that have not been described.

This model does not take into account high penetrance mutations in ovarian cancer genes, such as *BRCA1*, *BRCA2*, *RAD51C*, *RAD51D*. This information is not available in these data, but less than 1% of the population carry mutations in these genes and some of this risk is captured by family history of ovarian cancer. Our goal was to estimate lifetime risk in the general population, and these results are applicable to women with unknown *BRCA* status. This body of work has provided a framework by which to incorporate both nongenetic and common genetic factors into estimating lifetime risk. There are women at a substantially elevated lifetime risk of ovarian cancer; several preventive strat-

egies as well as modifiable risk factors that could result in substantially reduced lifetime risk of the disease are available now.

Disclosure of Potential Conflicts of Interest

U. Menon reports receiving a commercial research grant and has ownership interest (including patents) in Abcodia. No potential conflicts of interest were disclosed by the other authors.

Authors' Contributions

Conception and design: C.L. Pearce, D.O. Stram, R.B. Ness, U. Menon, A. Berchuck, P.D.P. Pharoah

Development of methodology: C.L. Pearce, D.O. Stram, P.D.P. Pharoah

Acquisition of data (provided animals, acquired and managed patients, provided facilities, etc.): R.B. Ness, P.A. Fasching, J.A. Doherty, F. Modugno, J.M. Schildkraut, M.A. Rossing, D.G. Huntsman, A.H. Wu, A. Berchuck, M.C. Pike

Analysis and interpretation of data (e.g., statistical analysis, biostatistics, computational analysis): C.L. Pearce, D.O. Stram, D.A. Stram, U. Menon, M.A. Rossing, D.G. Huntsman, A. Berchuck, M.C. Pike, P.D.P. Pharoah

Writing, review, and/or revision of the manuscript: C.L. Pearce, D.O. Stram, R.B. Ness, D.A. Stram, L.D. Roman, C. Templeman, U. Menon, P.A. Fasching, J.N. McAlpine, J.A. Doherty, F. Modugno, M.A. Rossing, D.G. Huntsman, A.H. Wu, A. Berchuck, M.C. Pike, P.D.P. Pharoah

Administrative, technical, or material support (i.e., reporting or organizing data, constructing databases): C.L. Pearce, A.W. Lee, P.A. Fasching, F. Modugno, A. Berchuck

Study supervision: C.L. Pearce, F. Modugno, A. Berchuck

Grant Support

This work was supported by donations from the family and friends of Kathryn Sladek Smith to the Ovarian Cancer Research Fund (to A. Berchuck). It was also supported by the NIH [P30 CA14089, R01 CA61132 (to M.C. Pike), P01 CA17054 (to C.L. Pearce, M.C. Pike, and A.H. Wu), N01 PC67010, R03 CA113148 (to C.L. Pearce, M.C. Pike, and A.H. Wu), R01 CA141154 (to C.L. Pearce, M.C. Pike, A.H. Wu, D.A. Stram, D.O. Stram, and A.W. Lee), R03 CA115195 (to C.L. Pearce and A.H. Wu), R01 CA112523 (to M.A. Rossing and J.A. Doherty), R01 CA87538 (to M.A. Rossing and J.A. Doherty), R01 CA76016 (to J.M. Schildkraut and A. Berchuck), R01 CA95023 (to R.B. Ness), R01 CA126841 (to R.B. Ness and F. Modugno), K07-CA80668 (to F. Modugno), NIH/National Center for Research Resources/General Clinical Research Center grant MO1 RR000056 (to F. Modugno)]; California Cancer Research Program [0001389V20170 and 2110200 (to C.L. Pearce, A.H. Wu, and M.C. Pike)]; Eve Appeal (to U. Menon); Oak Foundation (to U. Menon); Women's Health Theme of the UK National Institute of Health Research supported University

College London Hospital/University College London Comprehensive Biomedical Research Centre (to U. Menon); US Army Medical Research and Materiel Command [DAMD17-02-1-0669 (to R.B. Ness and F. Modugno) and DAMD17-02-1-0666 (to J.M. Schildkraut and A. Berchuck)]; Roswell Park Alliance Foundation (to R.B. Ness and F. Modugno); The Barbara Thomason Ovarian Cancer Professorship from the American Cancer Society (to A. Berchuck); National Institute of Environmental Health Sciences [T32ES013678 (to A.W. Lee)]; and Cancer Research UK [C490/A10124 and C490/A16561 (to P.D.P. Pharoah)].

The costs of publication of this article were defrayed in part by the payment of page charges. This article must therefore be hereby marked *advertisement* in accordance with 18 U.S.C. Section 1734 solely to indicate this fact.

Received October 2, 2014; revised December 18, 2014; accepted January 11, 2015; published OnlineFirst January 26, 2015.

References

- American Cancer Society. Cancer facts & figures 2013. Atlanta: American Cancer Society; 2013.
- Walsh T, Casadei S, Lee MK, Pennil CC, Nord AS, Thornton AM, et al. Mutations in 12 genes for inherited ovarian, fallopian tube, and peritoneal carcinoma identified by massively parallel sequencing. *Proc Natl Acad Sci U S A* 2011;108:18032–7.
- Pearce CL, Rossing MA, Lee AW, Ness RB, Webb PM, Chenevix-Trench G, et al. Combined and interactive effects of environmental and GWAS-identified risk factors in ovarian cancer. *Cancer Epidemiol Biomarkers Prev* 2013;22:880–90.
- Bojesen SE, Pooley KA, Johnatty SE, Beesley J, Michailidou K, Tyrer JP, et al. Multiple independent variants at the TERT locus are associated with telomere length and risks of breast and ovarian cancer. *Nat Genet* 2013;45:371–84, 384e371–372.
- Goode EL, Chenevix-Trench G, Song H, Ramus SJ, Notaridou M, Lawrenson K, et al. A genome-wide association study identifies susceptibility loci for ovarian cancer at 2q31 and 8q24. *Nat Genet* 2010;42:874–9.
- Permuth-Wey J, Lawrenson K, Shen HC, Velkova A, Tyrer JP, Chen Z, et al. Identification and molecular characterization of a new ovarian cancer susceptibility locus at 17q21.31. *Nat Commun* 2013;4:1627.
- Pharoah PD, Tsai YY, Ramus SJ, Phelan CM, Goode EL, Lawrenson K, et al. GWAS meta-analysis and replication identifies three new susceptibility loci for ovarian cancer. *Nat Genet* 2013;45:362–70, 370e361–362.
- Shen H, Fridley BL, Song H, Lawrenson K, Cunningham JM, Ramus SJ, et al. Epigenetic analysis leads to identification of HNF1B as a subtype-specific susceptibility gene for ovarian cancer. *Nat Commun* 2013;4:1628.
- Song H, Ramus SJ, Tyrer J, Bolton KL, Gentry-Maharaj A, Wozniak E, et al. A genome-wide association study identifies a new ovarian cancer susceptibility locus on 9p22.2. *Nat Genet* 2009;41:996–1000.
- Bolton KL, Tyrer J, Song H, Ramus SJ, Notaridou M, Jones C, et al. Common variants at 19p13 are associated with susceptibility to ovarian cancer. *Nat Genet* 2010;42:880–4.
- Buys SS, Partridge E, Black A, Johnson CC, Lamerato L, Isaacs C, et al. Effect of screening on ovarian cancer mortality: the Prostate, Lung, Colorectal and Ovarian (PLCO) Cancer Screening Randomized Controlled Trial. *J Am Med Assoc* 2011;305:2295–303.
- Menon U, Gentry-Maharaj A, Hallett R, Ryan A, Burnell M, Sharma A, et al. Sensitivity and specificity of multimodal and ultrasound screening for ovarian cancer, and stage distribution of detected cancers: results of the prevalence screen of the UK Collaborative Trial of Ovarian Cancer Screening (UKCTOCS). *Lancet Oncol* 2009;10:327–40.
- Collaborative Group on Epidemiological Studies of Ovarian Cancer V, Doll R, Hermon C, Peto R, Reeves G. Ovarian cancer and oral contraceptives: collaborative reanalysis of data from 45 epidemiological studies including 23,257 women with ovarian cancer and 87,303 controls. *Lancet* 2008;371:303–14.
- McAlpine JN, Hanley GE, Woo MM, Tone AA, Rozenberg N, Swenerton KD, et al. Opportunistic salpingectomy: uptake, risks, and complications of a regional initiative for ovarian cancer prevention. *Am J Obstet Gynecol* 2014;210:471.e1–11.
- Lo-Cigancic WH, Zgibor JC, Bunker CH, Moysich KB, Edwards RP, Ness RB. Aspirin, nonaspirin nonsteroidal anti-inflammatory drugs, or acetaminophen and risk of ovarian cancer. *Epidemiology* 2012;23:311–9.
- Moorman PG, Calingaert B, Palmieri RT, Iversen ES, Bentley RC, Halabi S, et al. Hormonal risk factors for ovarian cancer in premenopausal and postmenopausal women. *Am J Epidemiol* 2008;167:1059–69.
- Pike MC, Pearce CL, Peters R, Cozen W, Wan P, Wu AH. Hormonal factors and the risk of invasive ovarian cancer: a population-based case-control study. *Fertil Steril* 2004;82:186–95.
- Wu AH, Pearce CL, Tseng CC, Templeman C, Pike MC. Markers of inflammation and risk of ovarian cancer in Los Angeles County. *Int J Cancer* 2009;124:1409–15.
- Kwon JS, Tinker A, Pansegrau G, McAlpine J, Housty M, McCullum M, et al. Prophylactic salpingectomy and delayed oophorectomy as an alternative for BRCA mutation carriers. *Obstet Gynecol* 2013;121:14–24.
- Sieh W, Salvador S, McGuire V, Weber RP, Terry KL, Rossing MA, et al. Tubal ligation and risk of ovarian cancer subtypes: a pooled analysis of case-control studies. *Int J Epidemiol* 2013;42:579–89.
- Crum CP, Drapkin R, Miron A, Ince TA, Muto M, Kindelberger DW, et al. The distal fallopian tube: a new model for pelvic serous carcinogenesis. *Curr Opin Obstet Gynecol* 2007;19:3–9.