

# Increased Risk of Lung Cancer in Men with Tuberculosis in the Alpha-Tocopherol, Beta-Carotene Cancer Prevention Study

Meredith S. Shiels<sup>1</sup>, Demetrius Albanes<sup>1</sup>, Jarmo Virtamo<sup>2</sup>, and Eric A. Engels<sup>1</sup>

## Abstract

**Background:** Lung cancer and tuberculosis cause significant morbidity and mortality worldwide. Tuberculosis may increase lung cancer risk through substantial and prolonged pulmonary inflammation. However, prospective data on tuberculosis and lung cancer risk are limited.

**Methods:** Our study included 29,133 Finnish male smokers followed prospectively in the Alpha-Tocopherol, Beta-Carotene Cancer Prevention Study (1985–2005). Lung cancers were identified through linkage with the Finnish Cancer Registry, and hospital-treated tuberculosis cases were ascertained from the National Hospital Discharge Register. We assessed the association between tuberculosis and lung cancer risk with proportional hazards regression models, adjusting for age and cigarette smoking.

**Results:** Forty-four lung cancer cases occurred among 273 men with tuberculosis (incidence rate = 1,786 per 100,000 person-years). Tuberculosis was associated with a two-fold elevation in lung cancer risk (HR = 1.97; 95% CI = 1.46–2.65) with significant associations observed for both incident (HR = 2.05; 95% CI = 1.42–2.96) and prevalent tuberculosis (HR = 1.82; 95% CI = 1.09–3.02). Lung cancer risk was greatest in the 2-year window after tuberculosis diagnosis (HR = 5.01; 95% CI = 2.96–8.48) but remained elevated at longer latencies (HR = 1.53; 95% CI = 1.07–2.20). Though tuberculosis was associated with an increased risk of squamous cell carcinoma (HR = 3.71), adenocarcinoma (HR = 1.71), small cell carcinoma (HR = 1.72), and lung cancer of other (HR = 1.23) and unknown histologies (HR = 1.35), only the association for squamous cell carcinoma was statistically significant.

**Conclusions:** Tuberculosis is associated with increased lung cancer risk in male smokers.

**Impact:** Our results add to the growing body of evidence implicating chronic inflammation and pulmonary scarring in the etiology of lung cancer. *Cancer Epidemiol Biomarkers Prev*; 20(4); 672–8. ©2011 AACR.

## Introduction

Lung cancer and tuberculosis are 2 major public health problems that cause significant morbidity and mortality worldwide. Internationally, lung cancer is the most common malignancy and causes the largest number of cancer-related deaths with an estimated 1.35 million cases diagnosed and 1.18 million deaths occurring annually (1). An estimated 90% to 95% of lung cancers among men in North America and Europe can be attributed to cigarette smoking (1). According to the World Health Organization, approximately 9.4 million incident cases of

tuberculosis and 1.7 million deaths attributable to tuberculosis occurred in 2009 (2). Tuberculosis results from the reactivation of latent infection with *Mycobacterium tuberculosis*, which currently infects one third of the world's population (3).

Lung infections, including tuberculosis, have been implicated as potentially contributing to the etiology of lung cancer (4). Tuberculosis may increase the risk of lung cancer through substantial and prolonged pulmonary inflammation, leading to host tissue damage, fibrosis, scar formation, and genetic alterations (3–6). A recent meta-analysis reported tuberculosis to be associated with a 1.7-fold elevation in the risk of lung cancer (7). However, the majority of prior investigations have been case-control studies, and there are very limited prospective data regarding tuberculosis and lung cancer risk. As cigarette smoking is such a strong risk factor for lung cancer, it is possible that smoking and tuberculosis act synergistically to cause damage to the lungs and subsequently increase lung cancer risk.

In the current study, we assessed the association between tuberculosis and lung cancer risk in Finnish male smokers enrolled in the Alpha-Tocopherol, Beta-Carotene

**Authors' Affiliations:** <sup>1</sup>Division of Cancer Epidemiology and Genetics, National Cancer Institute, Rockville, Maryland; and <sup>2</sup>Department of Chronic Disease Prevention, National Institute for Health and Welfare, Helsinki, Finland

**Corresponding Author:** Meredith S. Shiels, Infections and Immunoparasitology Branch, Division of Cancer Epidemiology and Genetics, National Cancer Institute, 6120 Executive Blvd, EPS 7059, Rockville, MD 20852. Phone: 301-402-5374; Fax: 301-402-0817. E-mail: shielsms@mail.nih.gov

doi: 10.1158/1055-9965.EPI-10-1166

©2011 American Association for Cancer Research.

Cancer Prevention (ATBC) Study and followed over a 20-year period. Furthermore, we estimated the risk of lung cancer with varying latencies after tuberculosis diagnosis. Strengths of our study include the availability of detailed data on tobacco use, documentation of tuberculosis diagnoses using hospital records, and information on specific histologic subtypes of lung cancer.

## Materials and Methods

### Study population

Subjects in the present study were enrolled in the ATBC study, a randomized, double-blind trial designed to assess whether supplementation with  $\alpha$ -tocopherol and  $\beta$ -carotene reduces the risk of lung cancer (8, 9). The ATBC Study enrolled 29,133 men living in southwestern Finland in 1985–1988. Men were 50 to 69 years old, smoked at least 5 cigarettes per day, and were randomized to receive either  $\alpha$ -tocopherol supplements,  $\beta$ -carotene supplements, both supplements, or a placebo. Participants completed questionnaires at randomization, providing information on demographics, diet, and medical, tobacco and occupational histories (9). The trial ended on April 30, 1993, but study participants continued to be followed for cancer outcomes and mortality through 2005.

Lung cancers were identified through linkage with the Finnish Cancer Registry, which provides nearly 100% case ascertainment in Finland (10). For cases diagnosed through April 1999, medical records were reviewed centrally by 1 or 2 study physicians for diagnostic confirmation. Cases diagnosed after April 1999 had only the Finnish Cancer Registry data for information on site, histology, and date of diagnosis.

Information on cases of hospital-treated tuberculosis (ICD-9 codes: 010-012) during 1976–1995 was available from the National Hospital Discharge Register, which includes inpatient visit information from all public and private hospitals. Hospital-treated tuberculosis diagnoses were available both prior to randomization (prevalent tuberculosis) and from randomization through 1995 (incident tuberculosis). Of the 330 hospital-treated cases of tuberculosis, 57 were extrapulmonary cases and were not included as tuberculosis cases in this analysis. In addition, 114 men (20 men with registered cases of hospital-treated tuberculosis and 94 without hospital-treated tuberculosis) were diagnosed with late effects of tuberculosis, defined as sequelae due to old or inactive tuberculosis (i.e., ICD-9 code: 137.0). We treated these hospital reports separately, as we did not know their tuberculosis diagnosis dates.

### Statistical analysis

First, proportional hazards regression models were used to assess associations between participant characteristics, vitamin intake, and history of pulmonary disease with the risk of incident tuberculosis. For our main analysis, we examined the association between tuber-

culosis and lung cancer risk with proportional hazards regression models. Participants were followed from randomization to the first diagnosis of lung cancer, death, or December 31, 2005. Age was used as the hazard time metric to fully control for confounding by age. Tuberculosis was treated as a time-varying covariate: men diagnosed with incident tuberculosis contributed unexposed person-time prior to tuberculosis diagnosis and exposed person-time after tuberculosis diagnosis; men diagnosed with prevalent tuberculosis at randomization contributed only exposed person-time; and men who never developed tuberculosis contributed only unexposed person-time. In a separate analysis, we added a variable to assess risk associated with tuberculosis sequelae.

Cigarette use was assessed at baseline and all models were adjusted for cigarette smoking with  $\log \text{ cig-years} = [\log(\text{cigarettes smoked per day} + 1) \times \text{number of years smoked}]$ , which has previously been shown to better capture smoking information in relation to lung cancer risk than traditional smoking metrics (11). In addition, we examined trial intervention arm, vitamin C intake (in a previous ATBC Study, vitamin C intake was protective against tuberculosis; ref. 12), and baseline history of asthma, emphysema, and chronic bronchitis as potential confounders. However, because these factors did not substantially alter the association between tuberculosis and lung cancer risk (data not shown), they were not included in the final models.

In addition, we used proportional hazards regression models to examine whether the association between tuberculosis and lung cancer risk was modified by the duration of time after tuberculosis (i.e., latency, defined as 0–1.9, 2–9.9, and 10+ years after tuberculosis diagnosis). Furthermore, we assessed the association between tuberculosis and specific lung cancer histologic types (squamous cell carcinoma, adenocarcinoma, and both other and unknown histologies) and evaluated lung cancer risk associated with incident and prevalent hospital-treated tuberculosis separately. We also tested for the presence of statistical interaction between tuberculosis and  $\log \text{ cig-years}$ , treating  $\log \text{ cig-years}$  as a continuous variable or a binary variable, dichotomized at the median. In a sensitivity analysis, we ended follow-up on December 31, 1995, limiting the analysis to the time period when participants were followed for tuberculosis diagnoses.

## Results

The median age of the 29,133 men included in this study was 57 years at the time of randomization. All participants were smokers. At randomization, the men smoked a median of 20 cigarettes per day and had a cumulative tobacco use of 36 pack-years. According to the baseline questionnaire, 3.1% of participants had asthma, 6.5% had emphysema, and 7.7% had chronic bronchitis (Table 1).

**Table 1.** Characteristics of 29,133 men in the ATBC Study at randomization and associations with tuberculosis

	All participants, <i>n</i> (%)	Prevalent tuberculosis, <i>n</i> (%)	Incident tuberculosis, <i>n</i> (%)	HR (95% CI)
Total	29,133 (100)	88 (100)	185 (100)	
Age at randomization, y				
50–53	6,449 (22.1)	16 (18.2)	27 (14.6)	1.0
53–57	7,863 (27.0)	21 (23.9)	42 (22.7)	1.24 (0.77–2.02)
57–61	6,936 (23.8)	18 (20.5)	41 (22.2)	1.37 (0.84–2.23)
61–69	7,885 (27.1)	33 (37.5)	75 (40.5)	2.24 (1.44–3.48)
				$P_{\text{trend}} = 0.0001$
Cigarettes per day				
5–14	5,934 (20.4)	24 (27.3)	22 (11.9)	1.0
15–19	4,625 (15.9)	14 (15.9)	31 (16.8)	1.62 (0.93–2.81)
20–24	9,255 (31.8)	22 (25.0)	71 (38.4)	1.98 (1.23–3.20)
25+	9,319 (32.0)	28 (31.8)	61 (33.0)	1.62 (0.99–2.64)
				$P_{\text{trend}} = 0.07$
Pack-years smoked				
0–24	7,376 (25.3)	25 (28.4)	25 (13.5)	1.0
25–35	7,329 (25.1)	16 (18.2)	44 (23.8)	1.69 (1.03–2.78)
36–46	7,260 (24.9)	21 (23.9)	59 (31.9)	2.24 (1.40–3.58)
47+	7,177 (24.6)	26 (29.6)	57 (30.8)	2.27 (1.41–3.64)
				$P_{\text{trend}} = 0.0004$
$\alpha$ -Tocopherol arm				
No	14,569 (50.0)	45 (51.1)	86 (46.5)	1.0
Yes	14,564 (50.0)	43 (48.9)	99 (53.5)	1.10 (0.82–1.47)
$\beta$ -Carotene arm				
No	14,573 (50.0)	49 (55.7)	91 (49.2)	1.0
Yes	14,560 (50.0)	39 (44.3)	94 (50.8)	1.08 (0.81–1.45)
Baseline vitamin C intake, mg/d				
<92.5	13,565 (50.0)	36 (47.4)	107 (63.7)	1.0
92.5+	13,546 (50.0)	40 (52.6)	61 (36.3)	0.57 (0.41–0.78)
Missing	2,022	12	17	
History of asthma				
No	28,232 (96.9)	82 (93.2)	167 (90.3)	1.0
Yes	901 (3.1)	6 (6.8)	18 (9.7)	3.97 (2.43–6.48)
History of emphysema				
No	27,234 (93.5)	73 (83.0)	145 (78.4)	1.0
Yes	1,899 (6.5)	15 (17.1)	40 (21.6)	3.75 (2.62–5.36)
History of chronic bronchitis				
No	26,888 (92.3)	71 (80.7)	148 (85.4)	1.0
Yes	2,245 (7.7)	17 (19.3)	27 (14.6)	2.27 (1.51–3.42)

Eighty-eight cases of hospital-treated tuberculosis were identified prior to randomization (i.e., prevalent cases) and 185 incident cases of tuberculosis occurred during follow-up through December 31, 1995 (incidence rate = 135/100,000 person-years). As shown in Table 1, the risk of incident tuberculosis increased with age ( $P_{\text{trend}} < 0.0001$ ) and with pack-years smoked ( $P_{\text{trend}} = 0.0004$ ). A history of asthma, emphysema, or chronic bronchitis was also associated with increased risk of incident tuberculosis, whereas baseline intake of vitamin C was inversely associated. Among the hospital-

treated prevalent cases of tuberculosis, the median time from diagnosis to randomization was 1.7 years and ranged up to 10.5 years.

During 1985–2005, 3,102 cases of lung cancer occurred for an incidence rate of 744 cases per 100,000 person-years. The most common lung cancer histologies were squamous cell carcinoma ( $n = 788$ , 25.4%), small cell carcinoma ( $n = 427$ , 14.0%), and adenocarcinoma ( $n = 257$ , 8.3%). There were 461 (14.9%) lung cancers of other histologic types and 1,169 (37.7%) cases with an unknown histology. Forty-four men who developed lung cancer

**Table 2.** Tuberculosis and lung cancer risk by histology among men in the ATBC Study, 1985–2005

	Lung cancer cases	Incidence rate, per 100,000 person-years	HR <sup>a</sup>	95% CI
All lung cancers				
No tuberculosis	3,058	737	1.0	
Tuberculosis	44	1,786	1.97	1.46–2.65
Squamous cell carcinoma				
No tuberculosis	767	197	1.0	
Tuberculosis	21	917	3.71	2.40–5.72
Adenocarcinoma				
No tuberculosis	254	66	1.0	
Tuberculosis	3	136	1.71	0.55–5.35
Small cell carcinoma				
No tuberculosis	422	109	1.0	
Tuberculosis	5	226	1.72	0.71–4.15
Other cancer histology				
No tuberculosis	457	118	1.0	
Tuberculosis	4	180	1.23	0.46–3.28
Unknown cancer histology				
No tuberculosis	1,158	288	1.0	
Tuberculosis	11	469	1.35	0.75–2.45

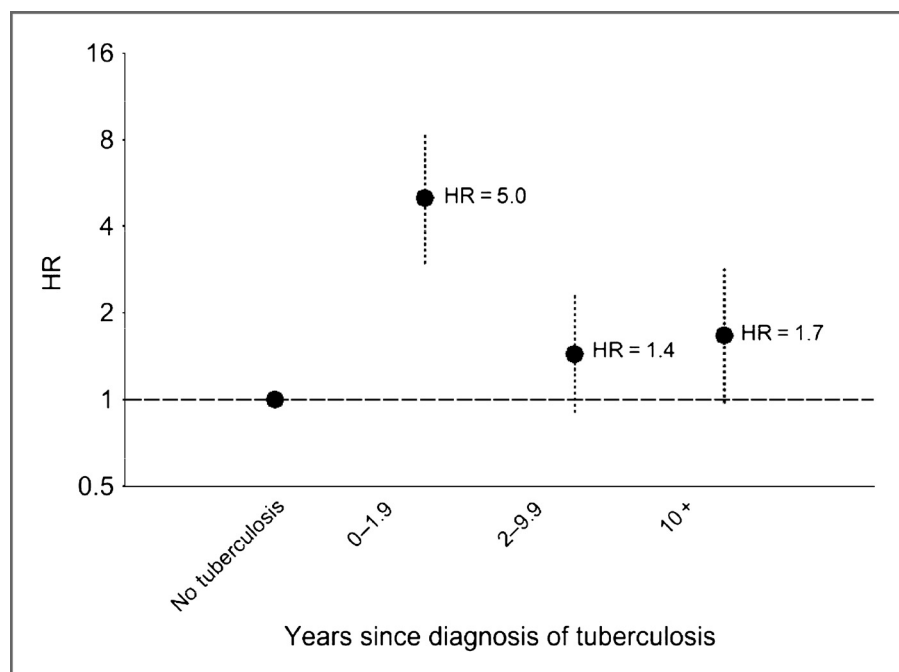
<sup>a</sup>All HRs were adjusted for age and baseline tobacco use using the log cig-years metric (see the Materials and Methods section).

had a prior diagnosis of either incident or prevalent tuberculosis.

Tuberculosis (incidence and prevalent tuberculosis cases combined) was associated with a 2-fold elevation in risk of lung cancer (HR = 1.97; 95% CI = 1.46–2.65; Table 2). Lung cancer risk was greatest in the 2-year

window after tuberculosis diagnosis (HR = 5.01; 95% CI = 2.96–8.48) but continued to be elevated at longer latencies (Fig. 1), with a 50% increased risk of lung cancer in the overall period 2 or more years after tuberculosis diagnosis (HR = 1.53; 95% CI = 1.07–2.20). When men diagnosed with tuberculosis sequelae were included in

**Figure 1.** The risk of lung cancer 0 to 1.9, 2 to 9.9, and 10+ years after tuberculosis diagnosis. Points indicate HRs and vertical dotted lines indicate 95% CIs. The horizontal dashed lines show the reference value corresponding to HR = 1. Although not shown in the figure, in the overall period 2+ years after tuberculosis diagnosis, the HR for lung cancer was 1.53 (95% CI = 1.07–2.20). All estimates were adjusted for age and baseline tobacco use using the log cig-years metric (see the Materials and Methods section).



the model, the lung cancer HR for tuberculosis was 1.88 (95% CI = 1.39–2.54) and the lung cancer HR for tuberculosis sequelae was 2.00 (95% CI = 1.23–3.23). No interaction was observed between tuberculosis and log cig-years treated as a continuous ( $P = 0.36$ ) or a dichotomous variable ( $P = 0.84$ ). When follow-up time was censored in 1995, the association between tuberculosis and lung cancer was somewhat stronger (HR = 2.38; 95% CI = 1.57–3.59, based on 1,320 lung cancer cases).

When associations with tuberculosis were examined for separate lung cancer histologies (Table 2), we found a 3.7-fold elevated risk of squamous cell carcinoma; risks of adenocarcinoma, small cell carcinoma, and lung cancers of other and unknown histologies also appeared increased, though these estimates were not statistically significant. We also separately evaluated associations with incident and prevalent tuberculosis and found lung cancer risk was elevated following both (HR = 2.05, 95% CI = 1.42–2.96 and HR = 1.82, 95% CI = 1.09–3.02, respectively).

## Discussion

Among a population of Finnish male smokers, we found the risk of lung cancer to be doubled in men with tuberculosis. Lung cancer risk was greatest in the 2-year period following tuberculosis diagnosis but elevated risk persisted with longer follow-up. Furthermore, the association between tuberculosis and lung cancer was not explained by cigarette smoking, as all men in ATBC were smokers and our analyses adjusted for intensity and duration of tobacco use.

Tuberculosis is thought to increase lung cancer risk through chronic pulmonary inflammation and fibrosis (4). Tuberculosis infection causes a profound and extended host immune response, with inflammatory cells in the lung producing extensive cytokine signaling cascades, reactive nitrogen and oxygen species, prostaglandins, and tissue-destructive proteases (5). Even tuberculosis patients who receive treatment may have prolonged pulmonary inflammation because tuberculosis symptoms occur months before diagnosis, and the treatment for tuberculosis requires a drug regimen administered over an extended period of time (3). In turn, prolonged pulmonary inflammation may cause tissue damage and genomic alterations. Furthermore, repair of tissue damage caused by tuberculosis can lead to pulmonary fibrosis and scarring (5), which is also linked to increased lung cancer risk (6). Of note, we found that men diagnosed with tuberculosis sequelae also had an elevated risk of lung cancer. This diagnosis likely captures men who had suffered severe lung damage due to tuberculosis infection, and our observation thus supports the importance of fibrosis in promoting carcinogenesis.

Two previous cohort studies and a number of case-control studies have examined the association between tuberculosis and lung cancer with mixed results. Our results are consistent with one previous prospective

study that found a 6-fold increase in lung cancer risk with tuberculosis (3); however, another cohort study found no association (13). Some case-control studies have reported associations between tuberculosis and lung cancer with ORs ranging from 1.6 to 4.2 (14–16), whereas others observed no association (17–19). As the strength of the association between tuberculosis and lung cancer appears to attenuate at longer latencies, it is possible that studies ascertaining tuberculosis history at one time point may have been primarily identifying cases occurring many years or even decades earlier. This, along with poor exposure assessment and limited power to detect differences, may account for some of the null results in previously published studies.

When we stratified lung cancer cases by histology, we observed tuberculosis to be significantly associated with squamous cell carcinoma. Though the results for adenocarcinoma, small cell carcinoma, and other and unknown histologies were not statistically significant, HRs for these endpoints were in the direction of increased risk and were based on a small number of lung cancer cases with tuberculosis. Previous studies have found tuberculosis to be associated with both squamous cell carcinoma and adenocarcinoma of the lung (7, 14, 15).

Cigarette smoking remains the single most important risk factor for lung cancer, increasing risk 15- to 30-fold (20). Tuberculosis may work in conjunction with tobacco to produce chronic inflammation, causing damage to lung tissues (4). In the current study, we did not detect a synergistic effect between the amount of tobacco used and tuberculosis. Previous case-control studies have found associations between tuberculosis and lung cancer in never smokers (7), but we were not able to assess this population because the ATBC Study only included smokers.

We also considered the possibility that confounding by cigarette smoking might have biased our results. Tobacco use has been previously shown to be associated with tuberculosis (21, 22) and in our analysis higher cumulative smoking was associated with an increased risk of incident tuberculosis (Table 1). Though we cannot rule out that confounding may have influenced our results, the potential for bias in our study may be less than in others. As noted, the ATBC Study only included smokers, and we utilized the available smoking data to control for smoking behaviors. Also, when we compared HRs before and after adjusting for log cig-years, we observed only a modest attenuation of the association between tuberculosis and lung cancer from 2.2 to 2.0. This relatively small change further indicates that the inclusion criteria of the study, restricting the cohort to a fairly homogeneous population of smokers, already partially controlled for confounding by cigarette smoking.

Studies of tuberculosis and lung cancer may be limited by additional biases. First, surveillance bias may occur if people with tuberculosis are more apt to receive medical care and testing that may lead to lung cancer diagnosis. In particular, people with tuberculosis are evaluated with



chest radiographs, resulting in a greater likelihood of diagnosing asymptomatic lung cancer. This bias is unlikely in our study, as all the men in the ATBC Study underwent chest radiography at baseline, at 2.3 and 4.6 years after randomization and at the end of active follow-up (9). Another potential bias arises due to reverse causality, in that an occult lung cancer may weaken the immune system and result in the reactivation of latent *M. tuberculosis* infection (5). Thus, tuberculosis may become clinically apparent prior to the lung cancer, even though lung cancer preceded tuberculosis reactivation. Indeed, in our study, the risk of lung cancer was greatest in the 2-year window after hospital-treated tuberculosis. However, reverse causality is less likely to drive the association between tuberculosis and lung cancer as the latency period between tuberculosis and lung cancer increases. In our study, we observed a 50% increase in the risk of lung cancer 2 or more years after tuberculosis, suggesting a persistent association when tuberculosis temporally preceded lung cancer. Furthermore, as participants underwent chest radiography during the course of the study, some occult lung cancers would have been detected before becoming clinically evident, reducing the likelihood of reverse causation. Finally, follow-up for tuberculosis diagnoses ended in 1995, whereas follow-up for lung cancer diagnoses extended through 2005. Thus, cases of tuberculosis occurring during 1996–2005 could have been missed in our analysis, potentially attenuating the association with lung cancer. When the analysis was restricted to 1985–1995, the association between tuberculosis and lung cancer was somewhat stronger.

The main strength of our study was the use of prospectively collected data. The ATBC Study has a relatively large number of tuberculosis cases and extended follow-up for lung cancer diagnoses. In our analysis, the incidence rate of hospital-treated tuberculosis was 135 per 100,000 person-years. Though this rate seems high compared with other European countries, it is thought that many of the men, who were 50 to 70 years old in the 1980s, were infected at a young age when tuberculosis

was highly endemic in Finland (12). Unlike the majority of prior studies (3, 13–19), the ATBC Study did not rely on self-report to ascertain tuberculosis diagnoses. Systematically collected information on hospital-treated tuberculosis reduced the risk of misclassification of exposure. In addition, most of the ATBC Study clinics were part of an earlier population-based tuberculosis diagnosis and treatment system, further enhancing the likelihood of complete and accurate diagnoses.

In conclusion, our results add to the growing body of evidence implicating chronic inflammation and pulmonary scarring in the etiology of lung cancer (4, 6, 23). Though we observed the increased risk of lung cancer among men with tuberculosis to be independent of cigarette smoking, it is important to note the particularly harmful effects of cigarette smoking among those infected with tuberculosis. Not only is cigarette smoking the strongest risk factor for lung cancer, it is also associated with an elevated risk of developing tuberculosis, as well as subsequent tuberculosis recurrence and mortality (21, 22). Given the high risk of lung cancer in tuberculosis patients, future public health efforts should focus on encouraging smoking cessation. Evaluation of screening programs to detect early lung cancers should also be considered.

#### Disclosure of Potential Conflicts of Interest

No potential conflicts of interest were disclosed.

#### Grant Support

The ATBC Study was supported by the Intramural Research Program of the National Cancer Institute, NIH, and U.S. Public Health Service contracts N01-CN-45165, N01-RC-45035, N01-RC-37004, and HHSN261201000006C from the National Cancer Institute, Department of Health and Human Services.

The costs of publication of this article were defrayed in part by the payment of page charges. This article must therefore be hereby marked *advertisement* in accordance with 18 U.S.C. Section 1734 solely to indicate this fact.

Received November 18, 2010; revised January 12, 2011; accepted February 1, 2011; published OnlineFirst February 18, 2011.

#### References

- Parkin DM, Bray F, Ferlay J, Pisani P. Global cancer statistics, 2002. *CA Cancer J Clin* 2005;55:74–108.
- World Health Organization. WHO Report 2010: Global Tuberculosis Control. Geneva, Switzerland: WHO Press; 2010.
- Engels EA, Shen M, Chapman RS, Pfeiffer RM, Yu YY, He X, et al. Tuberculosis and subsequent risk of lung cancer in Xuanwei, China. *Int J Cancer* 2009;124:1183–7.
- Engels EA. Inflammation in the development of lung cancer: epidemiological evidence. *Expert Rev Anticancer Ther* 2008;8:605–15.
- Nalbandian A, Yan BS, Pichugin A, Bronson RT, Kramnik I. Lung carcinogenesis induced by chronic tuberculosis infection: the experimental model and genetic control. *Oncogene* 2009;28:1928–38.
- Yu YY, Pinsky PF, Caporaso NE, Chatterjee N, Baumgarten M, Langenberg P, et al. Lung cancer risk following detection of pulmonary scarring by chest radiography in the prostate, lung, colorectal, and ovarian cancer screening trial. *Arch Intern Med* 2008;168:2326–32.
- Liang HY, Li XL, Yu XS, Guan P, Yin ZH, He QC, et al. Facts and fiction of the relationship between preexisting tuberculosis and lung cancer risk: a systematic review. *Int J Cancer* 2009;125:2936–44.
- The effect of vitamin E and beta carotene on the incidence of lung cancer and other cancers in male smokers. The Alpha-Tocopherol, Beta Carotene Cancer Prevention Study Group. *N Engl J Med* 1994;330:1029–35.
- The alpha-tocopherol, beta-carotene lung cancer prevention study: design, methods, participant characteristics, and compliance. The ATBC Cancer Prevention Study Group. *Ann Epidemiol* 1994;4:1–10.
- Korhonen P, Malila N, Pukkala E, Teppo L, Albanes D, Virtamo J, et al. The Finnish Cancer Registry as follow-up source of a large trial cohort—accuracy and delay. *Acta Oncol* 2002;41:381–8.
- Thurston SW, Liu G, Miller DP, Christiani DC. Modeling lung cancer risk in case-control studies using a new dose metric of smoking. *Cancer Epidemiol Biomarkers Prev* 2005;14:2296–302.

12. Hemila H, Kaprio J, Pietinen P, Albanes D, Heinonen OP. Vitamin C and other compounds in vitamin C rich food in relation to risk of tuberculosis in male smokers. *Am J Epidemiol* 1999;150:632–41.
13. Littman AJ, Thornquist MD, White E, Jackson LA, Goodman GE, Vaughan TL, et al. Prior lung disease and risk of lung cancer in a large prospective study. *Cancer Causes Control* 2004;15:819–27.
14. Park SK, Cho LY, Yang JJ, Park B, Chang SH, Lee KS, et al. Lung cancer risk and cigarette smoking, lung tuberculosis according to histologic type and gender in a population based case-control study. *Lung cancer* 2010;68:20–6.
15. Wang XR, Yu IT, Chiu YL, Qiu H, Fu Z, Goggins W, et al. Previous pulmonary disease and family cancer history increase the risk of lung cancer among Hong Kong women. *Cancer Causes Control* 2009;20:757–63.
16. Lan Q, Chapman RS, Schreinemachers DM, Tian L, He X. Household stove improvement and risk of lung cancer in Xuanwei, China. *J Natl Cancer Inst* 2002;94:826–35.
17. Brownson RC, Alavanja MC. Previous lung disease and lung cancer risk among women United States. *Cancer Causes Control* 2000;11:853–8.
18. Koshiol J, Rotunno M, Consonni D, Pesatori AC, De Matteis S, Goldstein AM, et al. Lower risk of lung cancer after multiple pneumonia diagnoses. *Cancer Epidemiol Biomarkers Prev* 2010;19:716–21.
19. Mayne ST, Buenconsejo J, Janerich DT. Previous lung disease and risk of lung cancer among men and women nonsmokers. *Am J Epidemiol* 1999;149:13–20.
20. Sasco AJ, Secretan MB, Straif K. Tobacco smoking and cancer: a brief review of recent epidemiological evidence. *Lung cancer* 2004;45 Suppl 2:S3–9.
21. World Health Organization. A WHO/The Union Monograph on TB and Tobacco Control: Joining Efforts to Control Two Related Global Epidemics. Geneva, Switzerland: WHO Press; 2007.
22. Bates MN, Khalakdina A, Pai M, Chang L, Lessa F, Smith KR, et al. Risk of tuberculosis from exposure to tobacco smoke: a systematic review and meta-analysis. *Arch Intern Med* 2007;167:335–42.
23. Ballaz S, Mulshine JL. The potential contributions of chronic inflammation to lung carcinogenesis. *Clin Lung Cancer* 2003;5:46–62.