

# Changes in Health and Wellbeing in the Years Leading up to a Cancer Diagnosis: A Prospective Cohort Study



Sarah E. Jackson<sup>1</sup>, Kate Williams<sup>1,2</sup>, Rebecca J. Beeken<sup>1</sup>, and Andrew Steptoe<sup>1</sup>

## Abstract

Emerging evidence suggests cancer survivors suffer impairments in health and wellbeing that predate their diagnosis. This study prospectively examined changes from 4 to 6 years prediagnosis to 0 to 2 years postdiagnosis. Data were from 477 cancer survivors and 5,451 cancer-free comparisons participating in the English Longitudinal Study of Ageing. We examined group-by-time interactions for self-rated health, quality of life (QoL), depression, life satisfaction and impairments in mobility, activities of daily living (ADL), and instrumental ADLs (IADL). All health and wellbeing markers worsened over time in both groups. A greater decline in cancer survivors' self-rated health was evident as early as 2 to 4 years prediagnosis ( $P < 0.001$ ). Around

diagnosis, there were greater declines in IADL impairment ( $P < 0.001$ ), QoL ( $P < 0.001$ ), and depression ( $P < 0.001$ ) in cancer survivors than in controls. Mobility and ADL impairments were consistently more prevalent among cancer survivors ( $P < 0.001$ ), and life satisfaction was consistently lower ( $P = 0.004$ ), but the rate of change over time did not differ significantly between groups. These results suggest there may be early signs of deterioration in perceived health that precede development of symptoms leading to cancer diagnosis by many years. Some of the impaired wellbeing in cancer patients may be long-standing, while other changes are more acute and may require targeted support following diagnosis.

## Introduction

Recent advances in the detection and treatment of cancer have led to dramatic improvements in survival. Forty years ago, 1 in 4 people diagnosed with cancer in the UK would survive for at least 10 years; today, it is 1 in 2 (1). Recognizing the growing importance of cancer survivorship, increasing research attention has turned to maximizing the health and wellbeing of individuals living with and beyond a cancer diagnosis.

A number of studies have shown that cancer survivors suffer impairments in health, physical function, quality of life, and psychological wellbeing relative to cancer-free controls (2–9). Although limitations relating to data availability have seen most studies concentrate on differences in the postdiagnostic period, deficits in health and wellbeing have also been observed prior to diagnosis. In one of the first studies to include prediagnostic data in analyses of changes in health and wellbeing around the time of a

cancer diagnosis, we observed differences in self-rated health, physical function, quality of life, and psychological wellbeing between cancer cases and controls at all examined time points—including up to 2 years before the cancer was diagnosed (9). This finding begs the question: How far in advance of a cancer diagnosis do impairments in health and wellbeing become evident? Although some preexisting health deficits may be derived from long-standing characteristics that also increase their risk of cancer—for example, limited physical function can result from obesity, which is also a risk factor for certain cancers (10)—others may be caused by undiagnosed cancer making the individual feel unwell. Understanding the trajectories of changes in health and wellbeing in the years leading up to a cancer diagnosis could identify potential "red flags" for healthcare professionals that might aid in diagnosing cancer at an earlier stage.

No studies to date have examined changes in health and wellbeing in cancer survivors across multiple prediagnostic assessments. Using prospective data from a large, population-based cohort of English older adults, the present study aimed to examine changes in a range of health and wellbeing indices across biennial intervals from 4 to 6 years before cancer diagnosis to 0 to 2 years postdiagnosis, in cancer survivors and a cancer-free comparison group. We analyzed markers of global health, physical function, quality of life, and psychological

<sup>1</sup>Department of Behavioural Science and Health, University College London, London, UK. <sup>2</sup>Acaster Lloyd Consulting Ltd, London, UK.

**Corresponding Author:** Sarah E. Jackson, University College London, 1-19 Torrington Place, London WC1E 6BT, UK. Phone: 44-207-670-5634; Fax: 44-207-670-5634; E-mail: s.e.jackson@ucl.ac.uk

doi: 10.1158/1940-6207.CAPR-18-0277

©2019 American Association for Cancer Research.

wellbeing to explore how long before a diagnosis of cancer individuals begin to show impairments.

## Materials and Methods

### Design and participants

Data were from the English Longitudinal Study of Ageing (ELSA), a longitudinal panel study of men and women aged  $\geq 50$  years living in England. The original ELSA sample ( $n = 12,099$ ) was recruited from households participating in the Health Survey for England in 1998, 1999, and 2001, and over the years the sample has been periodically refreshed to ensure the full age range is maintained. Comparisons of sociodemographic characteristics with the national census show that the sample is representative of the English population (11). Eight waves of ELSA data have been collected to date, starting in 2002 and every 2 years since. At the time of analysis, only the first seven waves of data were available. ELSA has received approval from various ethics committees, including the London MultiCentre Research Ethics Committee (MREC/01/2/91), and full informed consent has been obtained from all participants.

For the current analyses, cancer cases were those who first reported a diagnosis of cancer in waves 4 to 7. A cancer diagnosis was defined as answering "yes" to the question: "Have you ever been told by a doctor or other health professional that you had cancer or any other kind of malignancy" Analyses focus on the wave in which the diagnosis was first reported plus the previous three waves—corresponding to data points at 0 to 2 years post-diagnosis and 0 to 2, 2 to 4, and 4 to 6 years prediagnosis. Individuals who reported a cancer diagnosis in waves 1 to 3, or joined ELSA in a refreshment cohort, were excluded

from the analysis because of the absence of sufficient prediagnosis data.

The comparison group comprised participants who never reported a cancer diagnosis in any wave and for whom data were available on at least one health or wellbeing outcome for the waves selected to match the pre- and postdiagnosis points. The "postdiagnosis" time point for controls was set at wave 7, with waves 6, 5, and 4 used as the three corresponding prediagnosis waves.

### Measures

Self-rated health was assessed using a single item measure that asked participants to rate their general health on a 5-point scale from poor (coded 1) to excellent (coded 5).

Mobility impairment was assessed by asking participants if they had any difficulty performing 10 everyday activities (e.g., walking 100 yards, getting up from a chair after sitting for long periods) because of a health problem (yes/no). Data were highly skewed, so we dichotomized responses to distinguish between those reporting any (score of 1 or more) versus no mobility impairment (score of 0).

Activities of daily living (ADL) impairment was assessed with six questions that asked participants whether a health or memory problem caused them difficulty with the following everyday activities: dressing, walking across a room, bathing or showering, eating, getting in or out of bed, and toileting (yes/no; ref. 12). Because scores were skewed, with the majority of participants reporting no impairment with any of these activities, we dichotomized responses with a score of 1 or more identifying participants with any ADL impairment.

**Table 1.** Sample characteristics

	Whole sample ( <i>n</i> = 5,928)	Cancer survivor group ( <i>n</i> = 477)	Comparison group ( <i>n</i> = 5,451)
Age in diagnosis wave, mean (SD) years	69.95 (7.89)	71.41 (8.03)	69.82 (7.86)
Sex			
Male	45.4 (2,690)	49.5 (236)	45.0 (2,454)
Female	54.6 (3,238)	50.5 (241)	55.0 (2,997)
Wealth quintile			
1 (poorest)	15.0 (888)	16.8 (80)	14.8 (808)
2	16.7 (989)	14.7 (70)	16.9 (919)
3	22.0 (1,304)	24.1 (115)	21.8 (1,189)
4	22.5 (1,334)	20.8 (99)	22.7 (1,235)
5 (richest)	23.8 (1,413)	23.7 (113)	23.8 (1,300)
Ethnicity			
White	97.0 (5,751)	98.5 (470)	96.9 (5,281)
Nonwhite	3.0 (176)	1.5 (7)	3.1 (169)
Cancer site			
Lung	—	6.3 (30)	—
Breast	—	16.1 (77)	—
Colon, bowel or rectum	—	12.8 (61)	—
Lymphoma	—	2.9 (14)	—
Leukemia	—	0.8 (4)	—
Melanoma and other skin cancers	—	14.0 (67)	—
Prostate	—	16.1 (77)	—
Other/unspecified	—	30.8 (147)	—

NOTE: Values are percentages (*n*) unless otherwise stated.

We also assessed impairment with instrumental ADL (IADL). Whereas ADLs are tasks involved in caring for and moving the body, IADLs are activities that people do once they are up, dressed and put together, and support an independent lifestyle. IADL impairment was assessed by asking whether participants had any difficulty performing seven activities because of a health or memory problem: using a map to figure out how to get around in a strange place, preparing a hot meal, shopping for groceries, making telephone calls, taking medications, doing work around the house or garden, and financial management (yes/no; ref. 13). Scores were dichotomized to distinguish between participants reporting any IADL impairment (score of 1 or more) and those with no IADL impairment (score of 0).

Quality of life was assessed using the CASP-19, a validated scale designed to measure quality of life in older people (14). Items cover four domains: control, autonomy, self-realization, and pleasure. Respondents are asked how often each statement (e.g., "My health stops me from doing things I want to do") applies to them on a 4-point scale from 0 (often) to 3 (never). Positively worded items were reverse scored and all items summed, with higher scores indicating higher quality of life (possible range, 0–57).

Depressive symptomology was assessed with the 8-item Center for Epidemiologic Studies Depression (CES-D) scale (15), which asks about feelings over the last week (e.g., "Over the last week have you felt sad"), with binary response options (yes = 1, no = 0). Positive items were reverse scored, and items summed to create a score ranging from 0 to 8. Because scores were highly skewed, we used a score of four or higher (an established threshold) to indicate the presence of depressive symptoms (16).

Life satisfaction was assessed using the Satisfaction with Life Scale (SWLS; ref. 17), which asks respondents to indicate their agreement with five statements (e.g., "The conditions of my life are excellent"). Responses are given on a 7-point scale from 0 (strongly disagree) to 6 (strongly agree) and summed to produce a total score between 0 and 30 (higher scores indicate greater satisfaction with life). The SWLS was not included in ELSA's wave 1 questionnaire, so analyses for this outcome were limited to participants with new cancer diagnoses in waves 5 to 7.

Demographic information controlled for in the current analyses included age, sex, and non-pension wealth quintile (a sensitive indicator of socioeconomic status in this population group; ref. 18), because of known associations between these variables and health and wellbeing outcomes.

### Statistical analysis

We compared demographic characteristics of the cancer survivor and comparison groups using *t* tests (continuous variables) and  $\chi^2$  analyses (categorical variables). For our

**Table 2.** Health and wellbeing in the cancer survivor group and comparison group at each time point

	Cancer survivor group (n = 477)			Comparison group (n = 5,451)		
	4-6 years prediagnosis	2-4 years prediagnosis	0-2 years postdiagnosis	4-6 years prediagnosis	2-4 years prediagnosis	0-2 years postdiagnosis
Self-rated health (1-5), mean (SD)	3.38 (1.08)	3.39 (1.07)	2.58 (1.07)	3.36 (1.07)	3.32 (1.07)	3.20 (1.08)
Mobility impairment, % (n)	55.6 (265)	55.8 (266)	64.2 (306)	50.6 (2,759)	52.9 (2,885)	54.6 (2,978)
ADL impairment, % (n)	19.5 (93)	20.3 (97)	26.6 (127)	14.4 (784)	14.5 (791)	17.2 (937)
IADL impairment, % (n)	17.2 (82)	18.9 (90)	30.2 (144)	14.7 (802)	15.8 (861)	18.4 (1,001)
Quality of life (0-57), mean (SD)	41.81 (8.42)	41.07 (8.68)	39.31 (8.72)	41.86 (8.43)	41.77 (8.54)	42.17 (8.62)
Depressive symptoms, % (n)	15.8 (74)	13.6 (63)	21.0 (95)	12.2 (650)	13.0 (689)	11.9 (626)
Life satisfaction (0-30), mean (SD)	19.82 (6.74)	20.18 (6.56)	19.62 (6.81)	20.57 (6.07)	20.94 (6.18)	21.03 (6.11)

NOTE: Valid percentages are shown for ease of interpretation.

Abbreviations: ADL, activities of daily living; IADL, instrumental activities of daily living.

primary analyses, we used repeated-measures analyses of variance (continuous outcomes) and generalized estimating equations (categorical outcomes) to test main effects of group (overall differences between the cancer survivor and comparison groups in self-rated health, mobility impairments, ADL impairments, IADL impairments, quality of life, depressive symptoms and life satisfaction independent of time), main effects of time (changes in these markers of health and wellbeing over time independent of group), and group-by-time interactions (differences in changes in health and wellbeing over time between the cancer survivor and comparison groups). All analyses were adjusted for age, sex, wealth, and diagnosis wave.

## Results

### Sample characteristics

The analyzed sample comprised 5,928 men and women, of whom 477 reported a new cancer diagnosis in waves 4 to 7 and 5,451 did not report a cancer diagnosis in any wave. Sample characteristics are summarized in Table 1. In line with data from cancer registries (19), the most prevalent cancers in our sample were breast cancer, prostate cancer, colorectal cancer, and melanoma and other skin cancers. The cancer diagnosis group was slightly older [71.4 (SD 8.0) vs. 69.8 (7.9) years;  $P < 0.001$ ] and had a marginally more equal sex balance than the comparison group (50.5% vs. 55.0% female,  $P = 0.061$ ), but the groups did not differ in wealth ( $P = 0.389$ ).

### Global health

Table 2 summarizes unadjusted data on all markers of health and wellbeing in the cancer survivor and comparison groups at each time point.

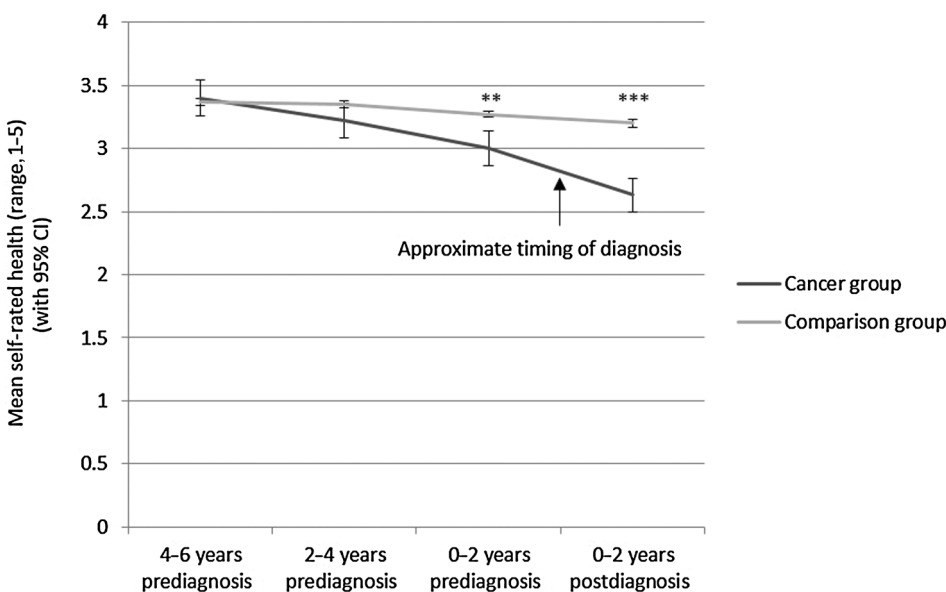
Figure 1 shows the mean self-rated health score for each group at each time point. The cancer survivor group

rated their health as significantly poorer than the comparison group overall ( $P < 0.001$ ). Mean self-rated health declined over time, independent of group ( $P < 0.001$ ). There was also a significant group-by-time interaction, with mean self-rated health falling more dramatically in the cancer survivor group than in the comparison group ( $P < 0.001$ ). The groups' ratings of their own health were almost identical 4 to 6 years before diagnosis, but between each pair of assessment points thereafter (4–6 to 2–4 years prediagnosis, 2–4 to 0–2 years prediagnosis, and 0–2 years prediagnosis to 0–2 years post-diagnosis), the decline in self-rated health was substantially greater in the cancer survivor group (from 3.40 to 2.63 from 4–6 years prediagnosis to 0–2 years post-diagnosis) than in the comparison group (from 3.37 to 3.20 over the same time period).

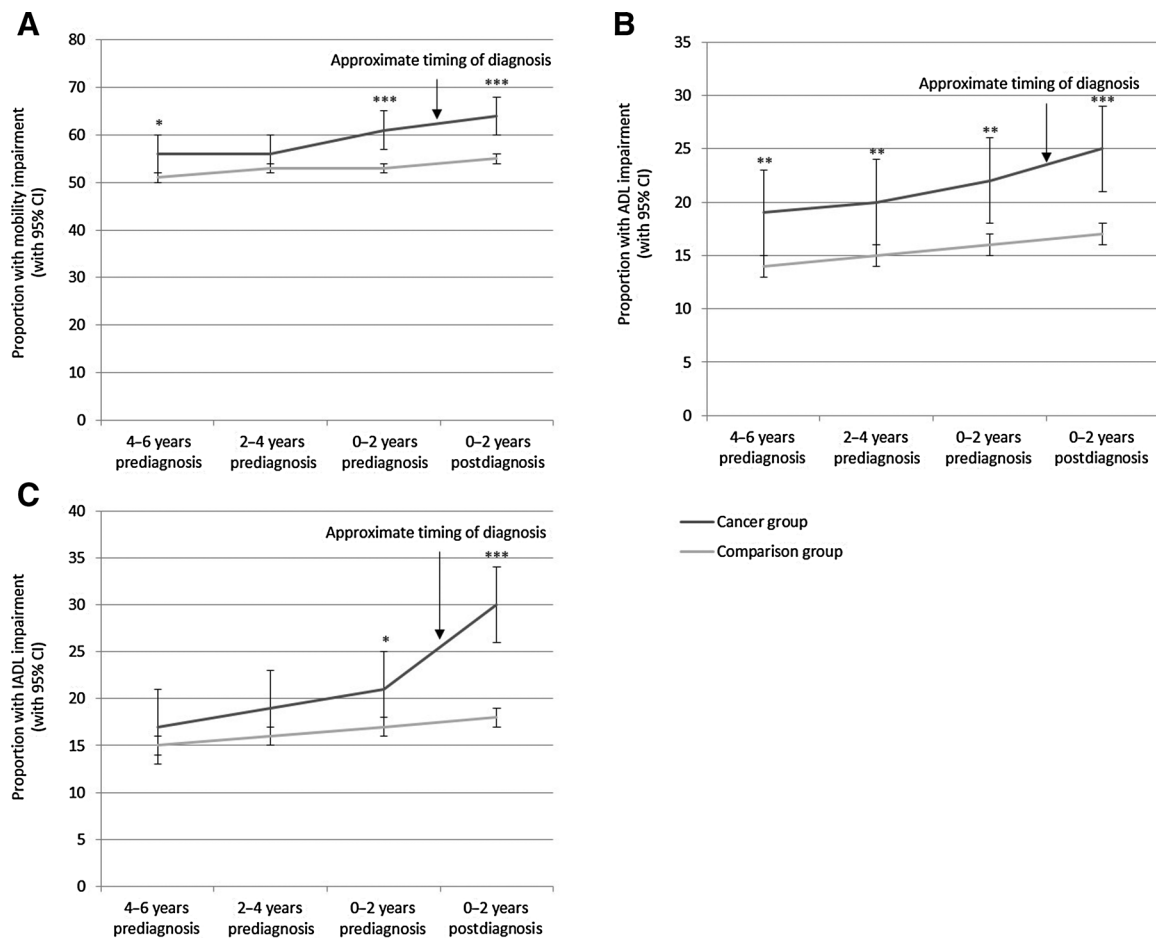
### Physical function

Figure 2A shows the proportion with mobility impairments in each group at each time point. Prevalence of mobility impairments was higher in the cancer survivor group than in the comparison group ( $P < 0.001$ ) and increased over time ( $P < 0.001$ ). From 2 to 4 years prediagnosis to 0 to 2 years postdiagnosis, rates of mobility impairment increased more in the cancer survivor group (from 56% to 64%) than in the comparison group (53% to 55%), but the group-by-time interaction did not reach statistical significance ( $P = 0.064$ ).

Figure 2B shows the proportion with ADL impairments in each group at each time point. ADL impairments were more prevalent in the cancer survivor group than in the comparison group across all times ( $P < 0.001$ ). The proportion with ADL impairments increased over time ( $P < 0.001$ ). The group-by-time interaction was not significant ( $P = 0.697$ ).



**Figure 1.** Global health by group and time. The mean self-rated health (with 95% confidence intervals) for each group at each time point (adjusted for age, sex, wealth, and diagnosis wave) is shown. \*\*,  $P < 0.01$ ; \*\*\*,  $P < 0.001$  for the difference between the cancer survivor group and comparison group at each time point.



**Figure 2.** Physical function by group and time. The proportion with (A) mobility impairments, (B) ADL impairments, and (C) IADL impairments (with 95% confidence intervals) for each group at each time point (adjusted for age, sex, wealth, and diagnosis wave) is shown. \*,  $P < 0.05$ ; \*\*,  $P < 0.01$ ; \*\*\*,  $P < 0.001$  for the difference between the cancer survivor group and comparison group at each time point.

Figure 2C shows the proportion with IADL impairments in each group at each time point. A higher proportion of the cancer survivor group than the comparison group had IADL impairments ( $P = 0.001$ ), and the prevalence of IADL impairments increased over time ( $P < 0.001$ ). The group-by-time interaction was significant ( $P < 0.001$ ), with a substantially greater increase in IADL impairments in cancer survivors from 0 to 2 years prediagnosis to 0 to 2 years postdiagnosis (21% to 30%) than in the comparison group (17% to 18%).

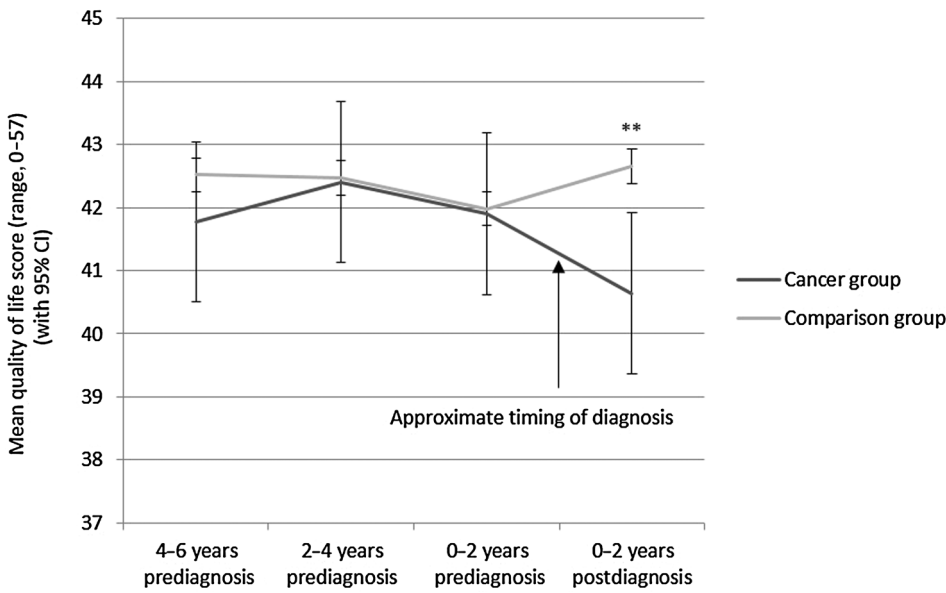
**Quality of life**

Figure 3 shows the mean quality life score for each group at each time point. There was no significant group effect ( $P = 0.252$ ). Independent of group, mean quality life scores increased slightly from 4 to 6 to 2 to 4 years prediagnosis, then declined over time ( $P = 0.048$ ). The group-by-time interaction was significant ( $P < 0.001$ ). Scores were slightly lower 4 to 6 years prediagnosis in the

cancer survivor group than in the comparison group (41.77 vs. 42.52), and were almost identical at 2 to 4 (42.40 vs. 42.47) and 0 to 2 years prediagnosis (41.90 vs. 41.98). However, from 0 to 2 years prediagnosis to 0 to 2 years postdiagnosis, mean quality of life declined in the cancer survivor group (from 41.90 to 40.64) and increased slightly in the comparison group (from 41.98 to 42.65).

**Psychological wellbeing**

Figure 4A shows the proportion with depressive symptoms in each group at each time point. A greater proportion of the cancer survivor group had depressive symptoms ( $P = 0.002$ ), and overall, the proportion with depressive symptoms increased over time ( $P = 0.001$ ). There was a significant group-by-time interaction ( $P < 0.001$ ), with the prevalence of depressive symptoms at 0 to 2 years prediagnosis and 0 to 2 years postdiagnosis increasing from 14% to 21% in the cancer survivor group, and remaining stable at 12% in the comparison group.



**Figure 3.** Quality of life by group and time. The mean quality life score (with 95% confidence intervals) for each group at each time point (adjusted for age, sex, wealth, and diagnosis wave) is shown. Note that the y-axis begins at 37 rather than at 0, to allow for easy visibility of results. \*\*,  $P < 0.01$  for the difference between the cancer survivor group and comparison group at each time point.

Figure 4B shows the mean life satisfaction score for each group at each time point. Life satisfaction was lower in the cancer survivor group, independent of time ( $P = 0.004$ ). Scores fluctuated over time, independent of group ( $P = 0.046$ ). From 0 to 2 years prediagnosis to 0 to 2 years postdiagnosis, mean life satisfaction decreased from 20.06 to 19.65 in cancer survivors and increased from 20.96 to 21.37 in the comparison group, but the group-by-time interaction was not significant ( $P = 0.111$ ).

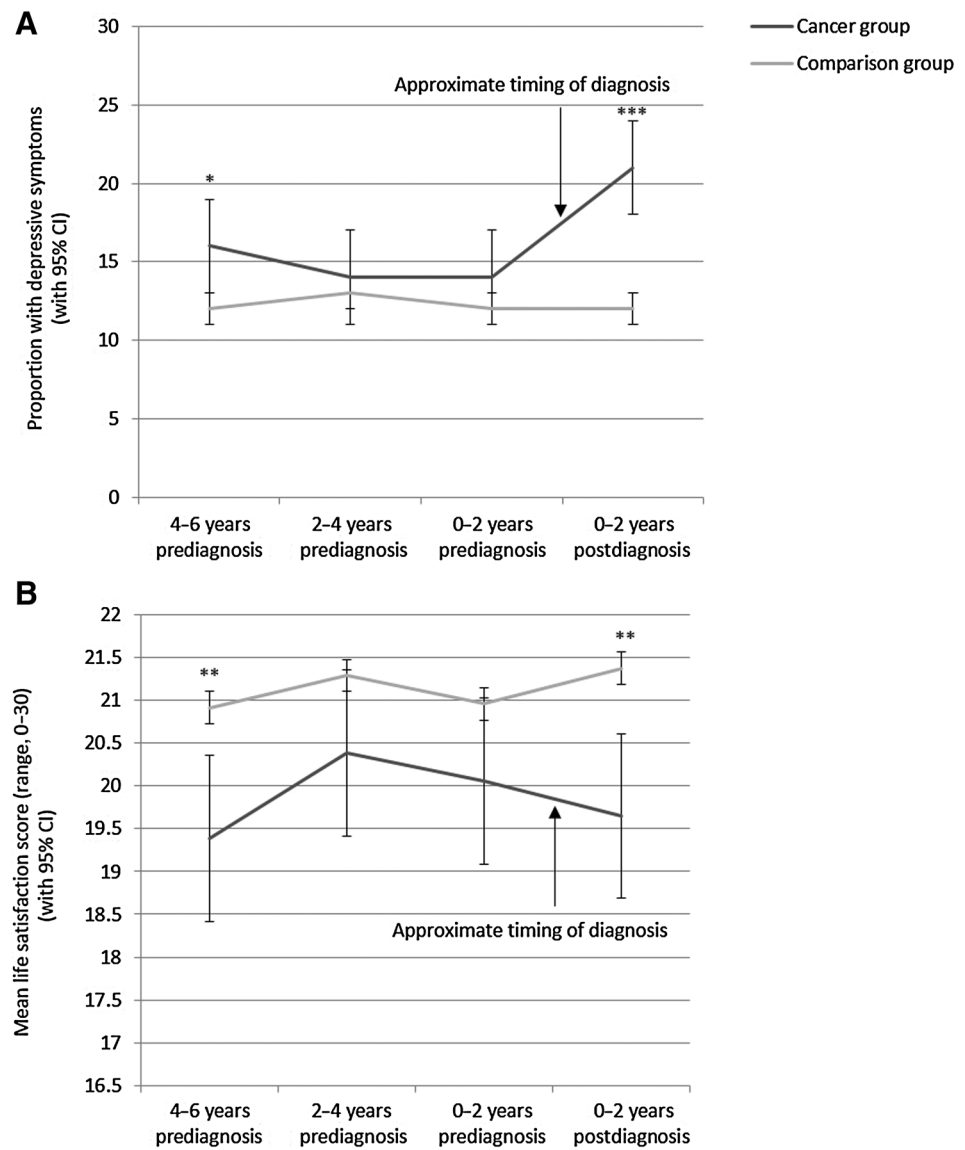
### Conclusions

This prospective study examined changes in health and wellbeing from 4 to 6 years before a diagnosis of cancer to 0 to 2 years after diagnosis in a large, population-based sample of English older adults. In a previous study, we found that cancer survivors reported poorer health and wellbeing up to 2 years prior to receiving their diagnosis (9). The present results extend these findings by demonstrating impairments in some markers even further in advance of diagnosis. Self-rated health was comparable in cancer survivors and comparisons 4 to 6 years before diagnosis, but a greater decline in cancer survivors' self-rated health was evident from 2 to 4 years prior to diagnosis, with between-groups differences growing ever larger over time. Mobility and ADL impairments were more prevalent among cancer survivors across all times—up to 6 years prior to diagnosis—and the rate of change over time did not differ significantly between groups, although there was a trend for a greater increase in mobility impairments among cancer survivors from 2 to 4 years before diagnosis. Similarly, cancer survivors reported poorer life satisfaction at all times, and although life satisfaction appeared to

decrease in cancer survivors relative to the comparison group around the point of diagnosis, this difference was not statistically significant.

However, not all markers of health and wellbeing showed substantial group differences in the years leading up to diagnosis. The largest changes in cancer survivors' quality of life, depressive symptoms, and IADL impairment occurred around the point of diagnosis. Quality life scores were fairly similar in cancer survivors, and the comparison group prior to diagnosis and the groups diverged postdiagnosis such that cancer survivors had lower quality of life. Depressive symptoms were consistently slightly higher among cancer survivors, but the difference became much more pronounced after diagnosis. IADL impairment was more prevalent in cancer survivors across all times, and while the difference between groups increased slightly over the lead up to the diagnosis point, the greatest change was seen from the wave immediately before diagnosis to the wave immediately after. In general, data on most health and wellbeing variables followed similar trends over time across groups. Exceptions were quality of life, depressive symptoms, and life satisfaction, where a divergence in mean scores/prevalence became obvious following a cancer diagnosis.

Differences in the pattern of results across the range of outcome measures may reflect differences in the way the variables relate to the cancer. It is likely that the sharp increase in depression and declines in quality of life and life satisfaction observed following diagnosis result from stress related to diagnosis and treatment (31), whereas the greater decline in self-rated health in the cancer survivor group in the lead up to diagnosis is likely to be caused by undiagnosed disease making individuals



**Figure 4.** Psychological wellbeing by group and time. **(A)** The proportion with depressive symptoms and **(B)** the mean life satisfaction score (with 95% confidence intervals) for each group at each time point (adjusted for age, sex, wealth, and diagnosis wave) are shown. Note that the y-axis for **B** begins at 16.5 rather than at 0, to allow for easy visibility of results. \*\*,  $P < 0.01$  for the difference between the cancer survivor group and comparison group at each time point.

feel unwell. If a decline in perceived health is a warning sign for cancer, this could have important implications for diagnosis and prognosis. It is important to continue to encourage people to seek help early if they are feeling unwell. Regularly recording patients' self-rated health at primary care appointments could provide a simple basis for identifying individuals at risk of cancer based on their rate of decline. This could aid in making diagnoses at an earlier stage, which may lead to better outcomes (20–22). However, our finding is at odds with a recent study that observed no significant association between declining self-rated health and risk of developing cancer over 12 years in a cohort of Danish women (23). There is a need for further investigation into the relation between self-rated health and cancer risk to resolve these discrepant findings.

**Clinical implications**

Health problems that predate the cancer diagnosis by a number of years may contribute to the onset of cancer or share a common etiology. For example, people with impaired mobility tend to be less physically active, which is known to increase risk of developing several cancers (24–27), and disability and cancer share a common risk factor in obesity (28, 29). With potentially modifiable risk factors such as obesity, physical activity, diet, smoking, and alcohol intake among the leading causes of cancer death (30), health promotion and behavior change interventions at the general-population level continue to be of critical importance.

More acute changes in depression and quality of life that take place around the time of diagnosis are likely a reaction to the stressful nature of cancer diagnosis and treatment

(31). This highlights a need to ensure cancer patients are screened for these risk factors at diagnosis and have access to psychological support. Previous studies have shown that around a quarter of female cancer survivors and 1 in 10 male cancer survivors desire psychological support from healthcare professionals (32) and that providing such support can significantly reduce psychological morbidity in patients undergoing cancer treatment (33). Moreover, given evidence relating psychosocial stress to adverse changes in the cellular immune response at the tumor level (34, 35), which may lead to faster disease progression, initiatives aimed at reducing stress and enhancing quality of life may offer significant benefits in terms of disease course.

### Study strengths and limitations

This study had several strengths. No other studies have investigated these processes over such a long lead in time or in a sample of this size. Data were drawn from a large sample that was broadly representative of the older English population. The prospective design minimized recall bias, and the inclusion of a cancer-free comparison group allowed for typical changes in health and wellbeing with aging to be accounted for.

However, results should be considered in light of a number of limitations. Cancer diagnoses were self-reported, and it is possible that malignancies diagnosed many years previously were forgotten or not reported, or that benign tumors were mistakenly reported as cancerous, although validation studies comparing self-reports against medical records have generally shown high agreement (36–38). Data were not available on the exact date of diagnosis, which could have been any time over the 2 years between the last wave at which a participant reported no history of cancer and the wave in which cancer was first reported. Information on stage at diagnosis was not collected, and it is likely that prediagnostic changes in health and wellbeing would be more pronounced in individuals diagnosed at a later stage. The sample of cancer survivors was too small to stratify analyses by cancer site, and given the substantial heterogeneity across cancers results would likely vary by site. Our sample of cancer survivors was restricted to those who were alive and sufficiently well to participate in at least one wave of data collection after their diagnosis, so the results may not generalize to individuals with more aggressive cancers.

### Future research

The present study has identified alterations in perceptions of health and wellbeing that precede the diagnosis of

cancer by several years. The next steps for advancing this research are to establish whether similar trends are observed in patient subgroups, such as men and women, those from higher versus lower SES levels, those affected by cancer at various sites/organs, and those diagnosed at different stages. Although detailed medical data are not routinely available in ELSA or other cohort studies of this type, it may be possible to explore these questions by linking data with information from cancer registries or hospital episode statistics. Such a design would also allow greater accuracy in determining the timing of diagnosis.

### Concluding remarks

To summarize, these results indicate that some of the impaired wellbeing in people diagnosed with cancer may be of long standing, evident up to 6 years prior, rather than being a reaction to diagnosis. Other changes, for example in depression or quality of life, appear to be more acute in nature and may require targeted support around the point of diagnosis. Importantly, there may be early signs of deterioration in perceptions of health that precede the development of symptoms leading to diagnosis by many years. Further research characterizing these changes more precisely could lead to fresh ideas about cancer awareness.

### Disclosure of Potential Conflicts of Interest

No potential conflicts of interest were disclosed.

### Authors' Contributions

**Conception and design:** S.E. Jackson, K. Williams, R.J. Beeken, A. Steptoe

**Development of methodology:** S.E. Jackson, K. Williams, A. Steptoe  
**Acquisition of data (provided animals, acquired and managed patients, provided facilities, etc.):** A. Steptoe

**Analysis and interpretation of data (e.g., statistical analysis, biostatistics, computational analysis):** S.E. Jackson

**Writing, review, and/or revision of the manuscript:** S.E. Jackson, K. Williams, R.J. Beeken, A. Steptoe

**Study supervision:** A. Steptoe

### Acknowledgments

This work was supported by a grant from Cancer Research UK (C1418/A14133).

The costs of publication of this article were defrayed in part by the payment of page charges. This article must therefore be hereby marked *advertisement* in accordance with 18 U.S.C. Section 1734 solely to indicate this fact.

Received July 24, 2018; revised October 10, 2018; accepted December 10, 2018; published first January 3, 2019.

### References

1. Cancer Research UK. Cancer survival statistics [Internet]. 2014 [cited 2015 Jan 12]. Available from: <http://www.cancerre>

[searchuk.org/cancer-info/cancerstats/survival/england-and-wales-cancer-survival-statistics](http://searchuk.org/cancer-info/cancerstats/survival/england-and-wales-cancer-survival-statistics)



2. Weaver KE, Forsythe LP, Reeve BB, Alfano CM, Rodriguez JL, Sabatino SA, et al. Mental and physical health-related quality of life among U.S. cancer survivors: population estimates from the 2010 National Health Interview Survey. *Cancer Epidemiol Prev Biomark* 2012;21:2108–17.
3. Wikman A, Wardle J, Steptoe A. Quality of life and affective well-being in middle-aged and older people with chronic medical illnesses: a cross-sectional population based study. *PLoS One* 2011;6:e18952.
4. Mitchell AJ, Ferguson DW, Gill J, Paul J, Symonds P. Depression and anxiety in long-term cancer survivors compared with spouses and healthy controls: a systematic review and meta-analysis. *Lancet Oncol* 2013;14:721–32.
5. Hewitt M, Rowland JH, Yancik R. Cancer survivors in the United States: age, health, and disability. *J Gerontol A Biol Sci Med Sci* 2003;58:M82–91.
6. Richardson LC, Wingo PA, Zack MM, Zahran HS, King JB. Health-related quality of life in cancer survivors between ages 20 and 64 years: population-based estimates from the Behavioral Risk Factor Surveillance System. *Cancer* 2008;112:1380–9.
7. Schroevers M, Ranchor AV, Sanderma R. Adjustment to cancer in the 8 years following diagnosis: a longitudinal study comparing cancer survivors with healthy individuals. *Soc Sci Med* 2006;63:598–610.
8. Koch L, Jansen L, Herrmann A, Stegmaier C, Holleczer B, Singer S, et al. Quality of life in long-term breast cancer survivors – a 10-year longitudinal population-based study. *Acta Oncol* 2013;52:1119–28.
9. Williams K, Jackson SE, Beeken RJ, Steptoe A, Wardle J. The impact of a cancer diagnosis on health and well-being: a prospective, population-based study. *Psychooncology* 2016;25:626–32.
10. Visscher TL, Seidell JC. The public health impact of obesity. *Annu Rev Public Health* 2001;22:355–75.
11. Steptoe A, Breeze E, Banks J, Nazroo J. Cohort profile: the English longitudinal study of ageing. *Int J Epidemiol* 2013;42:1640–8.
12. Katz S, Downs TD, Cash HR, Grotz RC. Progress in development of the index of ADL. *Gerontologist* 1970;10:20–30.
13. Lawton MP, Brody EM. Assessment of older people: self-maintaining and instrumental activities of daily living. *Gerontologist* 1969;9:179–86.
14. Hyde M, Wiggins RD, Higgs P, Blane DB. A measure of quality of life in early old age: the theory, development and properties of a needs satisfaction model (CASP-19). *Aging Ment Health* 2003;7:186–94.
15. Radloff LS. The CES-D scale. *Appl Psychol Meas* 1977;1:385–401.
16. Steffick DE. Documentation of affective functioning measures in the Health and Retirement Study. HRS Documentation Report DR-005; 2000.
17. Diener E, Emmons RA, Larsen RJ, Griffin S. The satisfaction with life scale. *J Assess* 1985;49:71–5.
18. Banks J, Karlsen S, Oldfield Z. Socio-economic position. 2003[cited 2014 Mar 4]; Available from: <http://discovery.ucl.ac.uk/15366/1/15366.pdf>
19. DeSantis CE, Lin CC, Mariotto AB, Siegel RL, Stein KD, Kramer JL, et al. Cancer treatment and survivorship statistics, 2014. *CA Cancer J Clin* 2014;64:252–71.
20. Sant M, Allemani C, Capocaccia R, Hakulinen T, Aareleid T, Coebergh JW, et al. Stage at diagnosis is a key explanation of differences in breast cancer survival across Europe. *Int J Cancer* 2003;106:416–22.
21. Goodwin JS, Samet JM, Hunt WC. Determinants of survival in older cancer patients. *J Natl Cancer Inst* 1996;88:1031–8.
22. Cicolallo L, Capocaccia R, Coleman MP, Berrino F, Coebergh JWW, Damhuis RA, et al. Survival differences between European and US patients with colorectal cancer: role of stage at diagnosis and surgery. *Gut* 2005;54:268–73.
23. Roelsgaard IK, Olesen AM, Simonsen MK, Johansen C. Self-rated health and cancer risk – a prospective cohort study among Danish women. *Acta Oncol Stockh Swed* 2016;55:1204–9.
24. Samad AKA, Taylor RS, Marshall T, Chapman MA. A meta-analysis of the association of physical activity with reduced risk of colorectal cancer. *Colorectal Dis* 2005;7:204–13.
25. Tardon A, Lee WJ, Delgado-Rodriguez M, Dosemeci M, Albanes D, Hoover R, et al. Leisure-time physical activity and lung cancer: a meta-analysis. *Cancer Causes Control* 2005;16:389–97.
26. Wolin KY, Yan Y, Colditz GA, Lee IM. Physical activity and colon cancer prevention: a meta-analysis. *Br J Cancer* 2009;100:611–6.
27. Monninkhof EM, Elias SG, Vlems FA, van der Tweel I, Schuit AJ, Voskuil DW, et al. Physical activity and breast cancer: a systematic review. *Epidemiology* 2007;18:137–57.
28. Backholer K, Wong E, Freak-Poli R, Walls HL, Peeters A. Increasing body weight and risk of limitations in activities of daily living: a systematic review and meta-analysis. *Obes Rev* 2012;13:456–68.
29. Renehan AG, Tyson M, Egger M, Heller RF, Zwahlen M. Body-mass index and incidence of cancer: a systematic review and meta-analysis of prospective observational studies. *Lancet* 2008;371:569–78.
30. Danaei G, Vander Hoorn S, Lopez AD, Murray CJ, Ezzati M. Causes of cancer in the world: comparative risk assessment of nine behavioural and environmental risk factors. *The Lancet* 2005;366:1784–93.
31. Edwards B, Clarke V. The psychological impact of a cancer diagnosis on families: the influence of family functioning and patients' illness characteristics on depression and anxiety. *Psychooncology* 2004;13:562–76.
32. Merckaert I, Libert Y, Messin S, Milani M, Slachmuylder J-L, Razavi D. Cancer patients' desire for psychological support: prevalence and implications for screening patients' psychological needs. *Psychooncology* 2010;19:141–9.
33. McArdle JMC, George WD, McArdle CS, Smith DC, Moodie AR, Hughson AVM, et al. Psychological support for patients undergoing breast cancer surgery: a randomised study. *BMJ* 1996;312:813–6.
34. Lutgendorf SK, Sood AK, Anderson B, McGinn S, Maiseri H, Dao M, et al. Social support, psychological distress, and natural killer cell activity in ovarian cancer. *J Clin Oncol* 2005;23:7105–13.
35. Andersen BL, Kiecolt-Glaser JK, Glaser R. A biobehavioral model of cancer stress and disease course. *Am Psychol* 1994;49:389–404.
36. Bergmann MM, Byers T, Freedman DS, Mokdad A. Validity of self-reported diagnoses leading to hospitalization: a comparison of self-reports with hospital records in a prospective study of American adults. *Am J Epidemiol* 1998;147:969–77.
37. Bush TL, Miller SR, Golden AL, Hale WE. Self-report and medical record report agreement of selected medical conditions in the elderly. *Am J Public Health* 1989;79:1554–6.
38. Simpson CF, Boyd CM, Carlson MC, Griswold ME, Guralnik JM, Fried LP. Agreement between self-report of disease diagnoses and medical record validation in disabled older women: factors that modify agreement. *J Am Geriatr Soc* 2004;52:123–7.

