

γ -Tocotrienol Inhibits Pancreatic Tumors and Sensitizes Them to Gemcitabine Treatment by Modulating the Inflammatory Microenvironment

Ajaikumar B. Kunnumakkara¹, Bokyung Sung¹, Jayaraj Ravindran¹, Parmeswaran Diagaradjane², Amit Deorukhkar², Sanjit Dey¹, Cemile Koca¹, Vivek R. Yadav¹, Zhimin Tong⁴, Juri G. Gelovani³, Sushovan Guha⁴, Sunil Krishnan², and Bharat B. Aggarwal¹

Abstract

Pancreatic cancers generally respond poorly to chemotherapy, prompting a need to identify agents that could sensitize tumors to treatment. In this study, we investigated the response of human pancreatic cells to γ -tocotrienol (γ -T3), a novel, unsaturated form of vitamin E found in palm oil and rice bran oil, to determine whether it could potentiate the effects of gemcitabine, a standard of care in clinical treatment of pancreatic cancer. γ -T3 inhibited the *in vitro* proliferation of pancreatic cancer cell lines with variable p53 status and potentiated gemcitabine-induced apoptosis. These effects correlated with an inhibition of NF- κ B activation by γ -T3 and a suppression of key cellular regulators including cyclin D1, c-Myc, cyclooxygenase-2 (COX-2), Bcl-2, cellular inhibitor of apoptosis protein, survivin, vascular endothelial growth factor (VEGF), ICAM-1, and CXCR4. In an orthotopic nude mouse model of human pancreatic cancer, p.o. administration of γ -T3 inhibited tumor growth and enhanced the antitumor properties of gemcitabine. Immunohistochemical analysis indicated a correlation between tumor growth inhibition and reduced expression of Ki-67, COX-2, matrix metalloproteinase-9 (MMP-9), NF- κ B p65, and VEGF in the tissue. Combination treatment also downregulated NF- κ B activity along with the NF- κ B-regulated gene products, such as cyclin D1, c-Myc, VEGF, MMP-9, and CXCR4. Consistent with an enhancement of tumor apoptosis, caspase activation was observed in tumor tissues. Overall, our findings suggest that γ -T3 can inhibit the growth of human pancreatic tumors and sensitize them to gemcitabine by suppressing NF- κ B-mediated inflammatory pathways linked to tumorigenesis.

Cancer Res; 70(21): 8695–705. ©2010 AACR.

Introduction

The National Cancer Institute estimated that 18,770 men and 18,030 women in the United States would die of pancreatic cancer in 2010 (1). The only agents approved by the U.S. Food and Drug Administration to treat pancreatic cancer are gemcitabine and erlotinib, both of which produce responses in <10% of patients and are associated with multiple adverse events and drug resistance. Therefore, the need for novel strategies to treat this lethal disease is imperative.

The transcription factor NF- κ B has been linked with cell proliferation, invasion, angiogenesis, metastasis, antiapoptosis,

and chemoresistance in multiple tumors (2, 3). In addition, numerous lines of evidence suggest that NF- κ B plays a major role in the growth and chemoresistance of pancreatic cancer. NF- κ B is constitutively active in pancreatic cancer cells (4) but not in immortalized, nontumorigenic pancreatic ductal epithelial cells (5). Thus, NF- κ B activation has been reported in animal models of pancreatic cancer (6) and in human pancreatic cancer tissue (4). NF- κ B promotes pancreatic cancer growth via antiapoptosis (4, 7) and mediates the induction of mitogenic gene products, such as c-Myc and cyclin D1 (8), the latter of which is overexpressed in human pancreatic cancer tissue and inversely correlated with patient survival (9). Additionally, NF- κ B enhances the angiogenic potential of pancreatic cancer cells via increased expression of proangiogenic factors, including vascular endothelial growth factor (VEGF; ref. 10), whereas other NF- κ B-regulated gene products promote the migration and invasion of pancreatic cancer cells (11). Finally, NF- κ B plays a pivotal role in promoting gemcitabine resistance in pancreatic cancer (3). Together, this evidence implicates NF- κ B in pancreatic cancer and suggests that agents that block NF- κ B activation could reduce chemoresistance of the cells to gemcitabine and perhaps be used in combination with gemcitabine as a novel therapeutic regimen for pancreatic cancer.

Authors' Affiliations: Departments of ¹Experimental Therapeutics, ²Radiation Oncology, ³Experimental Diagnostic Imaging, and ⁴Gastrointestinal Medicine and Nutrition, University of Texas M.D. Anderson Cancer Center, Houston, Texas

Note: Supplementary data for this article are available at Cancer Research Online (<http://cancerres.aacrjournals.org/>).

Corresponding Author: Bharat B. Aggarwal, University of Texas M.D. Anderson Cancer Center, 1515 Holcombe Boulevard, Box 143, Houston, TX 77030. Phone: 713-794-1817; Fax: 713-745-6339; E-mail: aggarwal@mdanderson.org

doi: 10.1158/0008-5472.CAN-10-2318

©2010 American Association for Cancer Research.

Vitamin E, as represented by tocopherols, was first discovered in 1922 (12). Tocotrienols, unsaturated derivatives of vitamin E found in rice, barley, oats, and palm, were first identified in 1965 and first found to prevent cancer in 1989 (13). Although tocopherols have been studied extensively (over 30,000 citations), very little is known about tocotrienols. Limited studies have revealed that tocotrienols are more potent antioxidant agents than tocopherols (14) and exhibit activities superior to those of tocopherols. For instance, studies from our laboratory and others have shown that γ -tocotrienol (γ -T3), but not tocopherol, can inhibit both constitutive and inducible NF- κ B activation in various cancer cell lines (15, 16). This activity correlated with downregulation of the NF- κ B-regulated gene products associated with survival, proliferation, invasion, and angiogenesis (16). Tocotrienols have been shown to suppress the *in vitro* proliferation of a wide variety of tumor cells, including human breast, colon, prostate, and pancreatic (12, 17). γ -T3 has been reported to potentiate the effect of gefitinib, celecoxib, and statins against various human cancers (12, 18–20). This dietary agent can also inhibit ErbB3-dependent phosphoinositide 3-kinase/Akt mitogenic signaling in cancer cells (21). Moreover, tocotrienols have been shown to inhibit angiogenesis (22, 23) by suppressing hypoxia-inducible factor-1 α (24) and to inhibit proinflammatory markers and cyclooxygenase-2 (COX-2) expression *in vitro* (25). Other studies have shown that γ -T3 inhibits human cancer cell progression by downregulating cyclin D1 and E (26). Recent studies have shown that tocotrienols can suppress the proliferation of various human pancreatic cancer cells (17) and, when given *p.o.* to mice, significant levels accumulate in the pancreatic tissues. Another recent study indicate that γ -T3 can sensitize androgen-independent prostate cancer to docetaxel *in vivo* through downregulation of proliferating cell nuclear antigen, Ki-67 and Id1, and upregulation of cleaved caspase-3 and poly(ADP-ribose) polymerase (27).

The possibility that dietary agents can potentiate the effects of chemotherapeutic agents such as gemcitabine is an attractive strategy. In the present study, we investigated whether γ -T3 could sensitize human pancreatic tumors to gemcitabine *in vitro* and in an orthotopic mouse model. We showed that γ -T3 inhibited the *in vitro* proliferation of various pancreatic cancer cells, enhanced gemcitabine-induced apoptosis, and potentiated the antitumor activity of gemcitabine against orthotopically implanted human pancreatic tumors through the downregulation of NF- κ B and NF- κ B-regulated gene products.

Materials and Methods

Materials

γ -T3 (Fig. 1A) was kindly supplied by Davos Life Science (Singapore). The following polyclonal antibodies against intercellular adhesion molecule-1 (ICAM-1), cyclin D1, matrix metalloproteinase 9 (MMP-9), survivin, cellular inhibitor of apoptosis protein-1 (cIAP-1), procaspase-3, procaspase-9, COX-2, c-Myc, Bcl-2, and Bcl-xL were obtained from Santa Cruz Biotechnology. The polyclonal antibody against p65

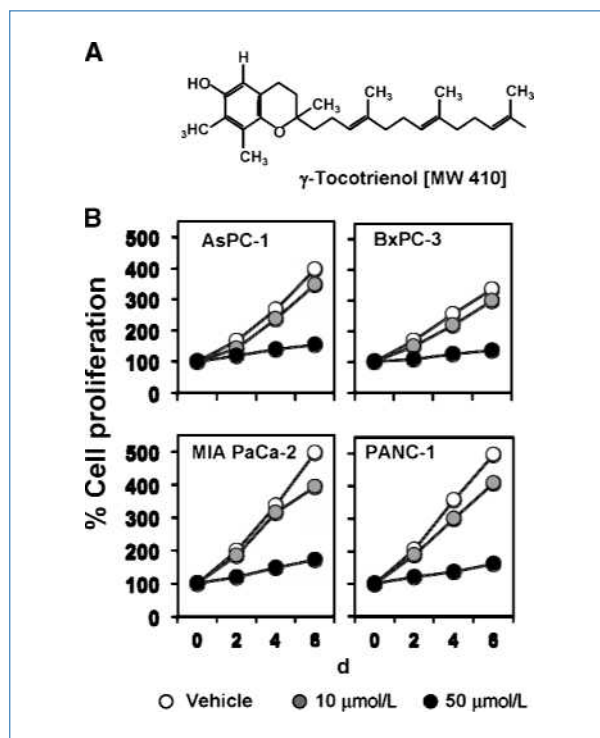


Figure 1. γ -T3 inhibits proliferation in pancreatic cancer cells *in vitro*. A, structure of γ -T3. B, MTT assay results showed dose-dependent suppression of cell proliferation in all four pancreatic cancer cell lines tested. Points, mean of triplicate; bars, SEM. Data are representative of three independent experiments.

(recognizing the epitope within the NH2 terminal domain of human NF- κ B) was obtained from Abcam. Antibodies against VEGF and Ki-67 were purchased from Thermo Fisher Scientific. The liquid DAB⁺ substrate chromogen system-horseradish peroxidase (HRP) used for immunocytochemistry was obtained from Dako. Penicillin, streptomycin, RPMI 1640, and fetal bovine serum (FBS) were obtained from Invitrogen. Tris, glycine, NaCl, SDS, and bovine serum albumin (BSA) were obtained from Sigma Chemical. Gemcitabine (Gemzar; kindly supplied by Eli Lilly) was stored at 4°C and dissolved in sterile PBS on the day of use.

Cell lines

The pancreatic cancer cell lines BxPC-3, MIA PaCa-2, and PANC-1 were obtained from American Type Culture Collection. MPanc-96 was a kind gift from Dr. C. Logsdon (University of Texas M.D. Anderson Cancer Center). All cell lines were cultured in RPMI 1640 supplemented with 10% FBS, 100 units/mL penicillin, and 100 μ g/mL streptomycin. The above-mentioned cell lines were procured >6 months ago and have not been tested recently for authentication in our laboratory.

Proliferation assay

The effect of γ -T3 on cell proliferation was determined by the MTT uptake method as described previously (28). The

cells (2,000 per well) were incubated with γ -T3 in triplicate in a 96-well plate and then incubated for 2, 4, or 6 days at 37°C. A MTT solution was added to each well and incubated for 2 hours at 37°C. An extraction buffer (20% SDS and 50% dimethylformamide) was added, and the cells were incubated overnight at 37°C. The absorbance of the cell suspension was measured at 570 nm with an MRX Revelation 96-well multi-scanner (Dynex Technologies).

Apoptosis assay

To investigate whether γ -T3 could potentiate the apoptotic effects of gemcitabine in pancreatic cancer cells, we used a LIVE/DEAD cell viability assay kit (Invitrogen), which is used to determine intracellular esterase activity and plasma membrane integrity. This assay uses calcein, a polyanionic, green fluorescent dye that is retained within live cells, and a red fluorescent ethidium homodimer dye that can enter cells through damaged membranes and bind to nucleic acids but is excluded by the intact plasma membranes of live cells (29). Briefly, cells (5,000 per well) were incubated in chamber slides, pretreated with γ -T3 for 4 hours, and treated with gemcitabine for 24 hours. Cells were then stained with the assay reagents for 30 minutes at room temperature. Cell viability was determined under a fluorescence microscope by counting live (green) and dead (red) cells.

Animals

Male athymic nu/nu mice (4 weeks old) were obtained from the breeding colony of the Department of Experimental Radiation Oncology at University of Texas M.D. Anderson Cancer Center. The animals were housed in standard plexiglass cages (five per cage) in a room maintained at constant temperature and humidity and in a 12-hour light/12-hour dark cycle. Their diet consisted of regular autoclave chow and water ad libitum. None of the mice exhibited any lesions, and all were tested pathogen free. Before initiating the experiment, we acclimatized all of the mice to a pulverized diet for 3 days. Our experimental protocol was reviewed and approved by the Institutional Animal Care and Use Committee at University of Texas M.D. Anderson Cancer Center.

Orthotopic implantation of MIA PaCa-2 cells

MIA PaCa-2 cells were stably transfected with luciferase as previously described for PANC-1 cells (30). The MIA PaCa-2 cells were orthotopically implanted as described previously (29). Briefly, luciferase-transfected MIA PaCa-2 cells were harvested from subconfluent cultures after a brief exposure to 0.25% trypsin and 0.2% EDTA. Trypsinization was stopped with medium containing 10% FBS. The cells were washed once in serum-free medium and resuspended in PBS. Only suspensions consisting of single cells, with >90% viability, were used for the injections. After mice were anesthetized with ketamine-xylazine solution, a small incision was made in the left abdominal flank, and MIA PaCa-2 cells (1×10^6) in 100 μ L PBS were injected into the subcapsular region of the pancreas with a 27-gauge

needle and a calibrated push button-controlled dispensing device (Hamilton Syringe Co.). A cotton swab was held cautiously for 1 minute over the site of injection to prevent leakage. The abdominal wound was closed in one layer with wound clips (Braintree Scientific, Inc.).

Experimental protocol

One week after implantation, the mice were randomized into the following treatment groups ($n = 6$ per group) based on the bioluminescence first measured with an *in vivo* imaging system (IVIS 200, Xenogen Corp.): (a) untreated control (olive oil, 100 μ L daily), (b) tocotrienol (400 mg/kg once daily p.o.), (c) gemcitabine alone (25 mg/kg twice weekly by i.p. injection), and (d) combination (tocotrienol, 400 mg/kg once daily p.o., and gemcitabine, 25 mg/kg twice weekly by i.p. injection). Tumor volumes were monitored weekly with the bioluminescence IVIS, which includes a cryogenic cooling unit, and a data acquisition computer running Living Image software (Xenogen Corp.). Before imaging, the animals were anesthetized in an acrylic chamber with 2.5% isoflurane/air mixture and injected i.p. with 40 mg/mL D-luciferin potassium salt in PBS at a dose of 150 mg/kg body weight. After 10 minutes of incubation with luciferin, each mouse was placed in a right lateral decubitus position and a digital grayscale animal image was acquired, followed by the acquisition and overlay of a pseudocolor image representing the spatial distribution of detected photons emerging from active luciferase within the animal. Signal intensity was quantified as the sum of all detected photons within the region of interest per second. The mice were subjected to imaging on days 0, 7, 17, 24, and 29 of treatment. Therapy was continued for 4 weeks, and the animals were euthanized 1 week later. Primary tumors in the pancreas were excised, and the final tumor volume was measured as $V = 2/3\pi r^3$, where r is the mean of the three dimensions (length, width, and depth). Half of the tumor tissue was fixed in formalin and embedded in paraffin for immunohistochemistry and routine H&E staining. The other half was snap frozen in liquid nitrogen and stored at -80°C . H&E staining confirmed the presence of tumor(s) in each pancreas.

Preparation of nuclear extract from tumor samples

Pancreatic tumor tissues (75–100 mg/mouse) from mice in the control and treatment groups were minced and incubated on ice for 30 minutes in 0.5 mL of ice-cold buffer A [10 mmol/L HEPES (pH 7.9), 1.5 mmol/L KCl, 10 mmol/L MgCl₂, 0.5 mmol/L DTT, and 0.5 mmol/L phenylmethylsulfonyl fluoride (PMSF)]. The minced tissue was homogenized using a Dounce homogenizer and centrifuged at $16,000 \times g$ at 4°C for 10 minutes. The resulting nuclear pellet was suspended in 0.2 mL of buffer B [20 mmol/L HEPES (pH 7.9), 25% glycerol, 1.5 mmol/L MgCl₂, 420 mmol/L NaCl, 0.5 mmol/L DTT, 0.2 mmol/L EDTA, 0.5 mmol/L PMSF, and 2 μ g/mL leupeptin] and incubated on ice for 2 hours with intermittent mixing. The suspension was then centrifuged at $16,000 \times g$ at 4°C for 30 minutes. The supernatant (nuclear extract) was collected and stored at -70°C until used as previously described (28).

Protein concentration was measured by the Bradford assay with BSA as the standard.

NF- κ B activation in pancreatic cancer cells and tumor samples

To assess NF- κ B activation, we isolated nuclei from pancreatic cancer cell lines and tumor samples and carried out electrophoretic mobility shift assays (EMSA) essentially as described previously (29). Briefly, nuclear extracts prepared from pancreatic cancer cells (1×10^6 /mL) and tumor samples were incubated with 32 P-end-labeled 45-mer double-stranded NF- κ B oligonucleotide (4 μ g of protein with 16 fmol of DNA) from the HIV long terminal repeat (5'-TTGTTACAAGG-GACTTTCGCTGGGGACTTTCAGGGGGAGGCGTGG-3'; underline indicates NF- κ B-binding sites) for 15 minutes at 37°C. The resulting DNA-protein complex was separated from free oligonucleotide on 6.6% native polyacrylamide gels.

The dried gels were visualized, and radioactive bands were quantitated with a PhosphorImager and ImageQuant software (GE Healthcare).

Immunolocalization of NF- κ B p65, VEGF, and COX-2 in tumor samples

The nuclear localization of p65 and the expression of COX-2 and VEGF were examined via an immunohistochemical method described previously (28). Briefly, pancreatic cancer tumor samples were embedded in paraffin and fixed with paraformaldehyde. After being washed in PBS, the slides were blocked with protein block solution (Dako) for 20 minutes and then incubated overnight with rabbit polyclonal anti-human p65, mouse monoclonal anti-human VEGF, and anti-COX-2 antibodies (1:100, 1:50, and 1:75, respectively). After incubation with the antibodies, the slides were washed and then incubated with biotinylated link universal antiserum followed by HRP-streptavidin detection with the LSAB⁺ kit (Dako). The slides were rinsed, and color was developed with 3,3'-diaminobenzidine hydrochloride used as a chromogen. Finally, sections were rinsed in distilled water, counterstained with Mayer's hematoxylin, and mounted with DPX mounting medium (Sigma) for evaluation. Pictures were captured with a Photometrics Coolsnap CF color camera (Nikon) and MetaMorph software version 4.6.5 (Universal Imaging).

Ki-67 immunohistochemistry

Formalin-fixed, paraffin-embedded sections (5 μ m) were stained with anti-Ki-67 (rabbit monoclonal clone SP6) antibody as described previously (29). Results were expressed as the percentage of Ki-67⁺ cells \pm SEM per 40 \times magnification. A total of ten 40 \times fields were examined and counted from three tumors each of the treatment groups.

Western blot analysis

Pancreatic tumor tissues (75–100 mg/mouse) from mice in the control and treatment groups were minced and incubated on ice for 30 minutes in 0.5 mL of ice-cold whole-cell lysate buffer (10% NP40, 5 mol/L NaCl, 1 mol/L HEPES, 0.1 mol/L EGTA, 0.5 mol/L EDTA, 0.1 mol/L PMSF, 0.2 mol/L

sodium orthovanadate, 1 mol/L NaF, 2 μ g/mL aprotinin, and 2 μ g/mL leupeptin). The minced tissue was homogenized with a Dounce homogenizer and centrifuged at 16,000 $\times g$ at 4°C for 10 minutes. The proteins were then fractionated by SDS-PAGE, electrotransferred to nitrocellulose membranes, blotted with each antibody, and detected by enhanced chemiluminescence reagents (GE Healthcare).

High-performance liquid chromatography analysis

The extraction of γ -T3 was performed according to the method described earlier (31). Frozen tissue (100 mg) was thawed, and 400 μ L of ethanol were added and homogenized for 30 seconds. Next, 500 μ L of water were added and homogenized for 15 seconds. And then, 500 μ L of hexane were added and homogenized for 15 seconds. The samples were centrifuged at 5,000 rpm for 5 minutes at 4°C. The organic layer was evaporated to dryness under purified air at 40°C. The pellets were reconstituted with mobile phase and estimated by high-performance liquid chromatography (HPLC; Waters separation module Alliance 2695, Waters). Silica-based C18 column and mobile phase that was a mixture of acetonitrile/methanol/acetic acid (10%) in a ratio of 45:45:10, respectively, were used for separation. Analyses were run at a flow rate of 0.4 mL/min with the detector operating at wavelength of 291 nm. Tissues from vehicle-fed mice are set as controls that reflect the baseline.

Statistics

In vitro experiments were repeated twice, and statistical analysis was performed. The values were initially subjected to one-way ANOVA, which revealed significant differences between groups, and then later compared between groups with an unpaired Student's *t* test, which revealed significant differences between two sample means. *In vivo* experiments were done as at least three independent assays. The values were initially subjected to one-way ANOVA and then later compared among groups with an unpaired Student's *t* test.

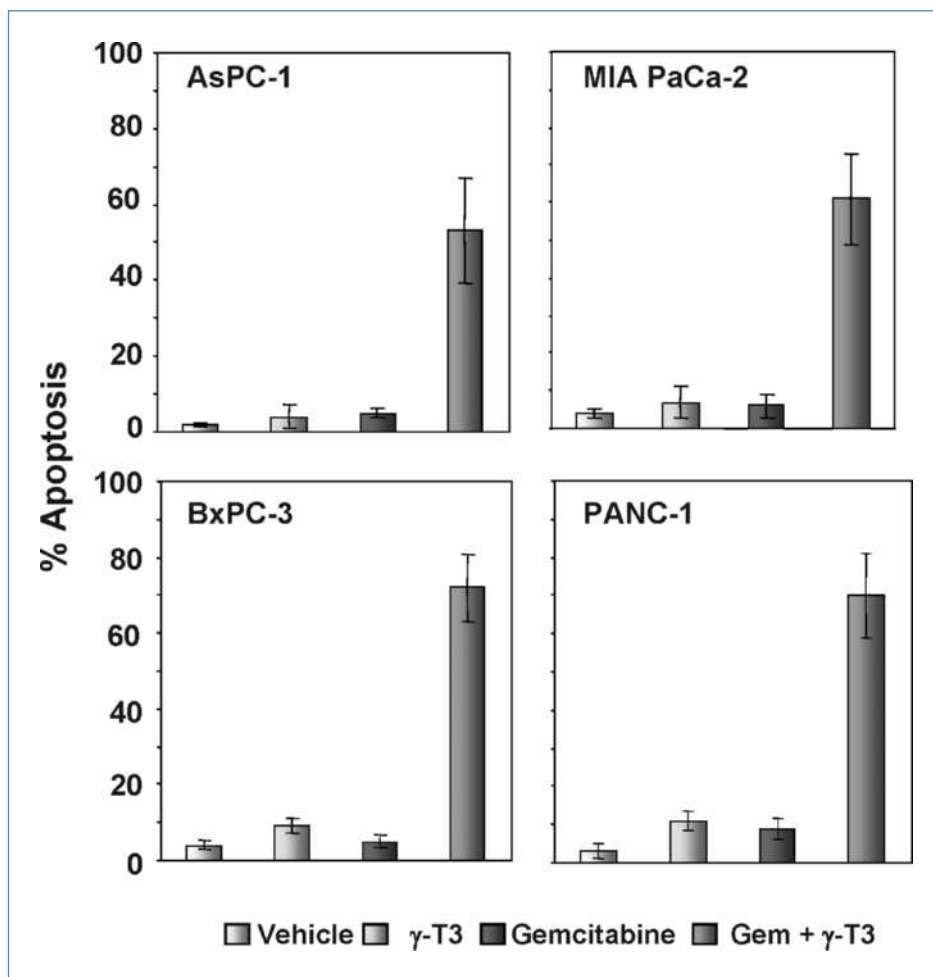
Results

The objective of this study was to (a) determine whether γ -T3 can inhibit the growth of human pancreatic cancer cells, (b) determine whether γ -T3 can enhance the antitumor effects of gemcitabine *in vitro*, (c) determine whether γ -T3 can potentiate the effects of a chemotherapeutic agent *in vivo* in models of human pancreatic cancer, and (d) investigate the mechanism by which γ -T3 enhances the effects of the chemotherapeutic agent. We used four different human pancreatic cancer cell lines (AsPC-1, BxPC-3, MIA PaCa-2, and PANC-1) of different origin for this investigation. These cell lines differ with respect to K-Ras and p53 mutations. To monitor tumor growth *in vivo*, we used noninvasive imaging of the luciferase-transfected MIA PaCa-2 cell line.

γ -T3 inhibits the proliferation of pancreatic cancer cells *in vitro*

We examined whether γ -T3 could inhibit the proliferation of human pancreatic cancer cell lines AsPC-1, PANC-1,

Figure 2. γ -T3 potentiates the apoptotic effects of gemcitabine in pancreatic cancer cells *in vitro*. LIVE/DEAD assay results indicated that γ -T3 potentiates gemcitabine (Gem)-induced cytotoxicity. Percentages, proportions of apoptotic pancreatic cancer cells. Data are representative of two independent experiments.



BxPC-3, and MIA PaCa-2, all of which exhibit K-Ras and p53 mutations, except BxPC-3, which harbors wild-type K-Ras. We treated these cell lines with different doses of γ -T3 for various time periods and determined the inhibition of proliferation by examining mitochondrial activity via the MTT uptake method. As Fig. 1B shows, γ -T3 suppressed the proliferation of all four pancreatic cancer cell lines in a dose- and time-dependent manner, irrespective of the genetic background (Fig. 1B). Proliferation of pancreatic cancer cells was almost completely suppressed with a 50 μ mol/L dose.

γ -T3 sensitizes human pancreatic cancer cells to gemcitabine

Gemcitabine is a standard treatment for patients with pancreatic cancer. To determine whether γ -T3 could enhance the apoptotic effects of gemcitabine in these cell lines, we performed LIVE/DEAD assay that measured the esterase activity. At a dose at which γ -T3 (10 μ mol/L) and gemcitabine (200 nmol/L) alone had minimally toxic effects, the two together were highly effective for inducing apoptosis in pancreatic cancer cell lines *in vitro* (Fig. 2). No significant differ-

ence was observed between the cell lines with respect to their sensitivity to the combination.

γ -T3 inhibits constitutive NF- κ B activation and proteins associated with inflammation, proliferation, invasion, and angiogenesis in pancreatic cancer cells

Because NF- κ B has been linked with both proliferation and chemoresistance, we next examined whether γ -T3 could inhibit constitutive NF- κ B activation in MIA PaCa-2 cell lines. Our results showed that γ -T3 inhibited constitutive NF- κ B activation (Fig. 3A).

We next investigated the effects of γ -T3 on the constitutive expression of antiapoptotic proteins Bcl-2, cIAP-1, and survivin. The expression of all these proteins was downregulated by γ -T3 in a dose-dependent manner (Fig. 3B). When we examined whether γ -T3 could modulate the constitutive expression of proliferative proteins cyclin D1, c-Myc, and COX-2, we found that γ -T3 suppressed the expression of all these proteins in a dose-dependent manner (Fig. 3C).

Likewise, γ -T3 downregulated the expression of proteins linked to invasion, adhesion, and angiogenesis-MMP-9,

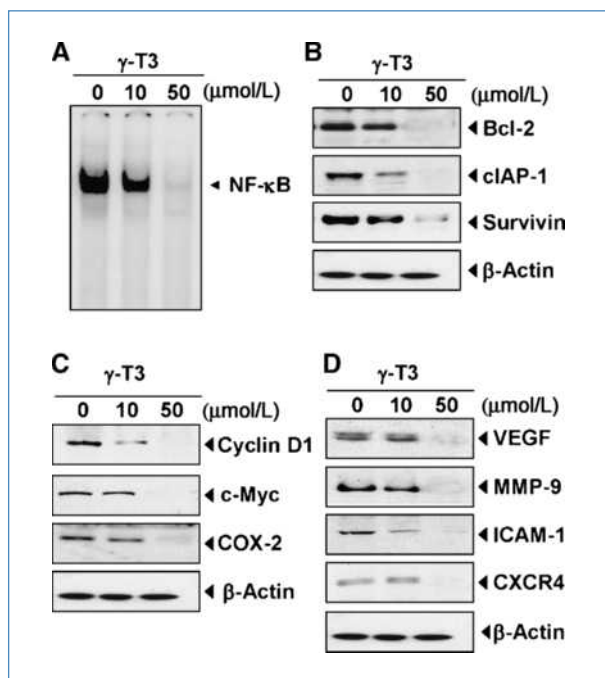


Figure 3. γ -T3 inhibits constitutive activation of NF- κ B and NF- κ B-regulated gene products *in vitro*. A, MIA PaCa-2 (1×10^6) cells were treated with γ -T3 (10 and 50 μ mol/L) for 4 h; nuclear extracts were prepared and then assayed for NF- κ B activation by EMSA. B-D, Western blot analysis showed that γ -T3 inhibited constitutive expression of NF- κ B-regulated gene products that regulate antiapoptosis (B), proliferation (C), and metastasis and angiogenesis (D) in pancreatic cancer cells. The MIA PaCa-2 (1×10^6) cells were treated with γ -T3 (10 and 50 μ mol/L) for 24 h. Whole-cell lysates were prepared and assayed for NF- κ B-regulated gene products by Western blotting. Data represent two independent experiments.

ICAM-1, VEGF, and CXCR4 in a dose-dependent manner (Fig. 3D).

γ -T3 potentiates the antitumor activity of gemcitabine in an orthotopic pancreatic tumor model in nude mice

Based on our *in vitro* results, we designed studies to determine the effects of γ -T3 on gemcitabine in orthotopically implanted human pancreatic tumors in nude mice (Fig. 4A). The dose of γ -T3 used has been used previously for radiosensitization of tumors in mice (32).

Luciferase-transfected MIA PaCa-2 cells were implanted in the tails of the pancreas in nude mice. Based on the IVIS imaging, 1 week later, the mice were randomized into four groups. The treatment was started 1 week after tumor cell implantation and continued per experimental protocol for 4 weeks. The animals were euthanized 6 weeks after tumor cell injection and 5 weeks from the date of treatment (Fig. 4A). To determine tumor development and the effects of γ -T3 and gemcitabine, we assessed the tumors with the bioluminescence IVIS on days 7, 17, 24, and 29 after the start of treatment. The bioluminescence imaging results (Fig. 4B and C) indicated a gradual increase in tumor volume in the control group compared with the three treatment groups.

The imaging results showed that the tumor volume in the combination group was significantly lower than in the group treated with tocotrienol or gemcitabine alone as well as in the vehicle-treated control group ($P < 0.001$ versus gemcitabine; $P < 0.001$ versus control). On the 42nd day, we euthanized the mice and measured the tumor volume with Vernier calipers. The results were in concordance with those from bioluminescence imaging and showed that the combination reduced the tumor volume more than in the other three groups ($P < 0.001$ versus control; Fig. 4D).

We next examined the expression of the cell proliferation marker Ki-67 in tumor tissues from the four groups. The results in Fig. 5A show that γ -T3 in gemcitabine significantly downregulated the expression of Ki-67 in tumor tissues compared with the control group ($P < 0.05$ versus control). The results also showed that γ -T3 alone significantly suppressed the expression of Ki-67 ($P < 0.05$ versus control; Fig. 5B).

γ -T3 inhibits NF- κ B activation and NF- κ B-regulated gene products in orthotopic pancreatic tumors

We next investigated whether the effects of γ -T3 on tumor growth in mice were associated with the inhibition of NF- κ B activation. The results of immunohistochemical analysis showed that γ -T3 alone completely suppressed NF- κ B activation in orthotopically grown human pancreatic tumor samples (Fig. 5B). γ -T3 also further suppressed NF- κ B activation in gemcitabine-treated tissues. Immunohistochemical analysis further showed that γ -T3 suppressed the expression of COX-2 (Fig. 5B, second panel), MMP-9 (Fig. 5B, third panel), and VEGF (Fig. 5B, bottom) in human pancreatic tumor tissues, and this effect was enhanced in tissues treated with gemcitabine.

γ -T3 potentiates the effects of gemcitabine in downregulating the expression of NF- κ B-regulated gene products

We also examined NF- κ B activation in tumor tissues by EMSA. The results showed that γ -T3 alone abolished the constitutive activation of NF- κ B in the pancreatic tumor tissue, and this down-modulation was maintained in tissue obtained from animals treated with gemcitabine (Fig. 6A). Thus, EMSA results confirmed those obtained from immunohistochemical analysis. NF- κ B is known to regulate the expression of proteins involved in proliferation: cyclin D1, c-Myc, and COX-2. The expression of all these proteins was found to be maximally downregulated in pancreatic tissue obtained from animals treated with both agents together (Fig. 6B). We also examined the expression of survival proteins Bcl-xL, cIAP-1, and Bcl-2 by Western blot. Maximum downregulation was noted when both agents were used together (Fig. 6C). When activation of caspase-9 and caspase-3 were examined, maximum activation was also noted when both agents were used together (Fig. 6C). Our results also showed that γ -T3 and gemcitabine together decreased the expression of proteins linked to metastasis (MMP-9), invasion (ICAM-1), and angiogenesis (VEGF; Fig. 6D). Thus, γ -T3 in combination with gemcitabine

inhibited the expression of various gene products in pancreatic tumors from mice.

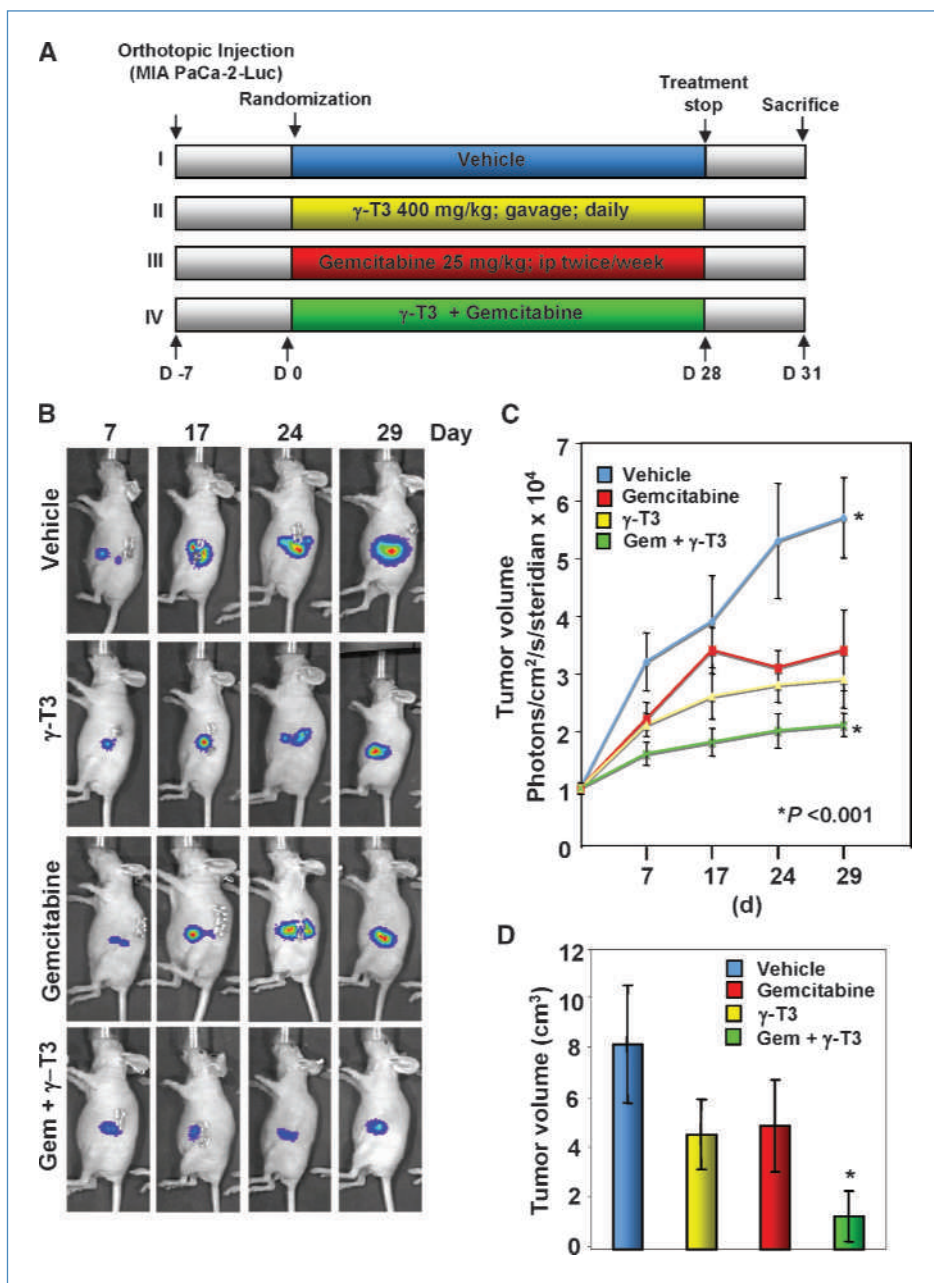
γ-T3 can be detected in pancreatic tumor tissue

To determine whether γ-T3 is directly detectable in pancreatic tissue when given p.o., we extracted tissues and analyzed them by HPLC for γ-T3. Purified γ-T3 was used as a control. We also used tissues from untreated animals as a control. The results in Fig. 6E show a significant presence of γ-T3 in human pancreatic tumor tissue (94.12 ng/g tissue) compared with untreated control. γ-T3 estimation by HPLC was linear in this range (see Supplementary Fig. S1).

Discussion

Pancreatic cancer is the most lethal type of cancer, with an estimated 5-year survival rate of around 4% despite the best treatment available today. Agents that are nontoxic and yet potentiate the effects of chemotherapy are highly desirable. In the current study, we investigated whether γ-T3, an analogue of vitamin E, could enhance the anti-tumor activity of gemcitabine against human pancreatic cancer. We found that γ-T3 inhibited the proliferation of various pancreatic cancer cell lines *in vitro*, potentiated gemcitabine-induced apoptosis, and inhibited constitutively

Figure 4. γ-T3 potentiates the effect of gemcitabine in blocking the growth of pancreatic cancer in nude mice. A, schematic of experimental protocol described in Materials and Methods. Group I was given olive oil (100 μL, p.o., daily) and PBS (100 μL, i.p., twice weekly), group II was given γ-T3 (400 mg/kg, p.o., daily), group III was given gemcitabine (25 mg/kg, i.p., twice weekly), and group IV was given γ-T3 (400 mg/kg, p.o., daily) and gemcitabine (25 mg/kg, i.p., twice weekly; n = 6). B, bioluminescence IVIS images of orthotopically implanted pancreatic tumors in live, anesthetized mice. C, measurements of photons per second depicting tumor volume at various time points using live IVIS imaging at the indicated times (n = 6). Points, mean; bars, SEM. D, tumor volumes in mice measured on the last day of the experiment at autopsy with Vernier calipers and calculated using the formula $V = 2/3\pi r^3$ (n = 6). Columns, mean; bars, SE.



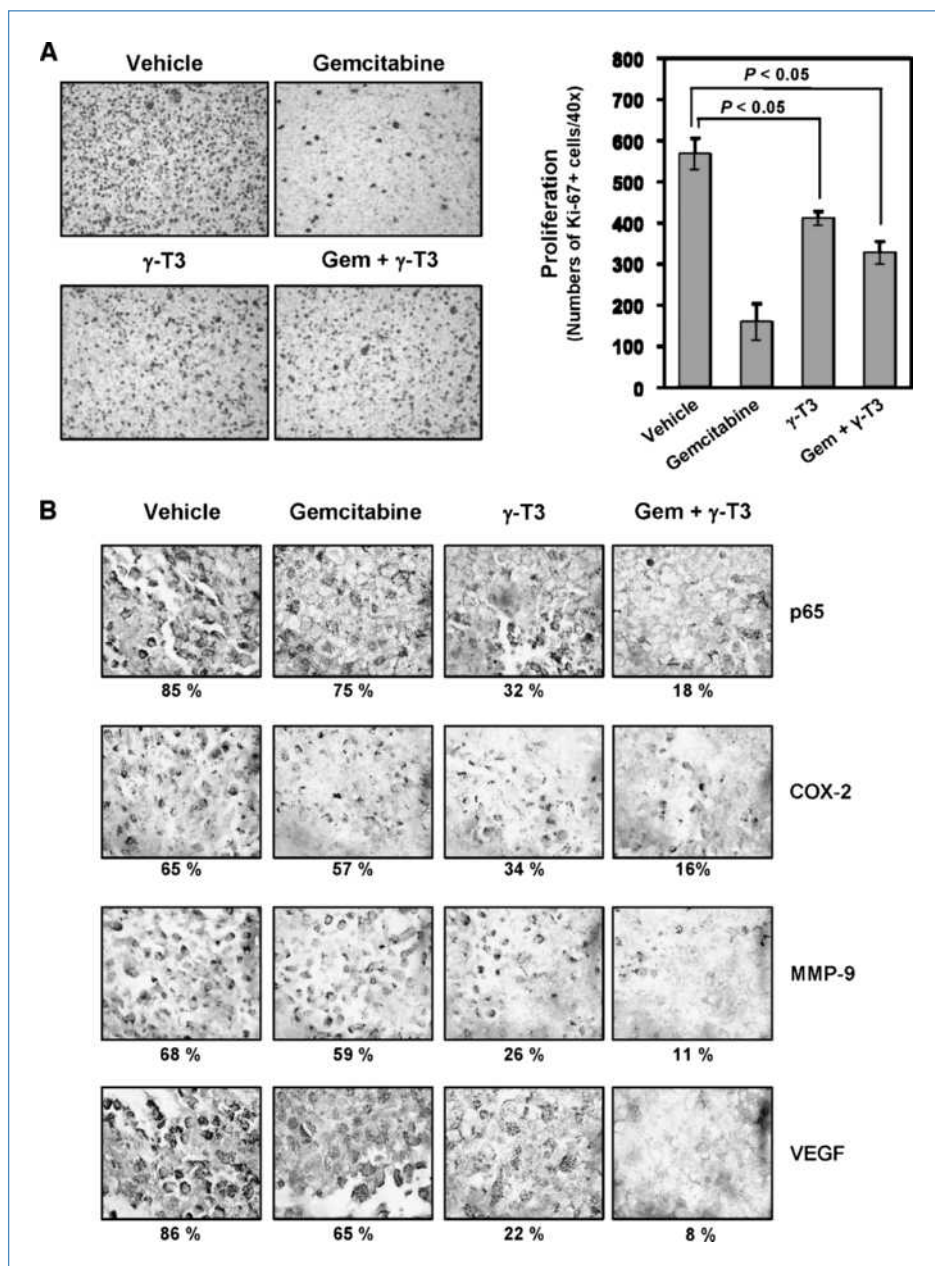


Figure 5. γ -T3 enhances the effect of gemcitabine against tumor cell proliferation and the expression of NF- κ B and NF- κ B-regulated genes in pancreatic cancer. A, left, immunohistochemical analysis of proliferation maker Ki-67; right, quantification of Ki-67⁺ cells, as described in Materials and Methods. Values are represented as the mean \pm SEM of triplicate. B, immunohistochemical analysis of NF- κ B and NF- κ B-regulated genes COX-2, MMP-9, and VEGF in pancreatic tumor tissues from mice. Percentages indicate positive staining for the given biomarker. Samples from three animals in each group were analyzed, and representative data are shown.

active NF- κ B and NF- κ B-regulated gene products. When given alone, γ -T3 significantly inhibited the growth of PaCa in established orthotopically grown human pancreatic tumors in nude mice. In addition, γ -T3 further potentiated the effects of gemcitabine against human pancreatic tumors in nude mice.

We found that γ -T3 can suppress the proliferation of various pancreatic cancer cell lines. Our results agree with those from Hussein and colleagues (17) that showed that δ -T3 could suppress the proliferation of Panc-1, MIA PaCa-2, and BxPC-3 cells. This suppression of proliferation was due to cell cycle arrest at G₁. However, they did not investigate

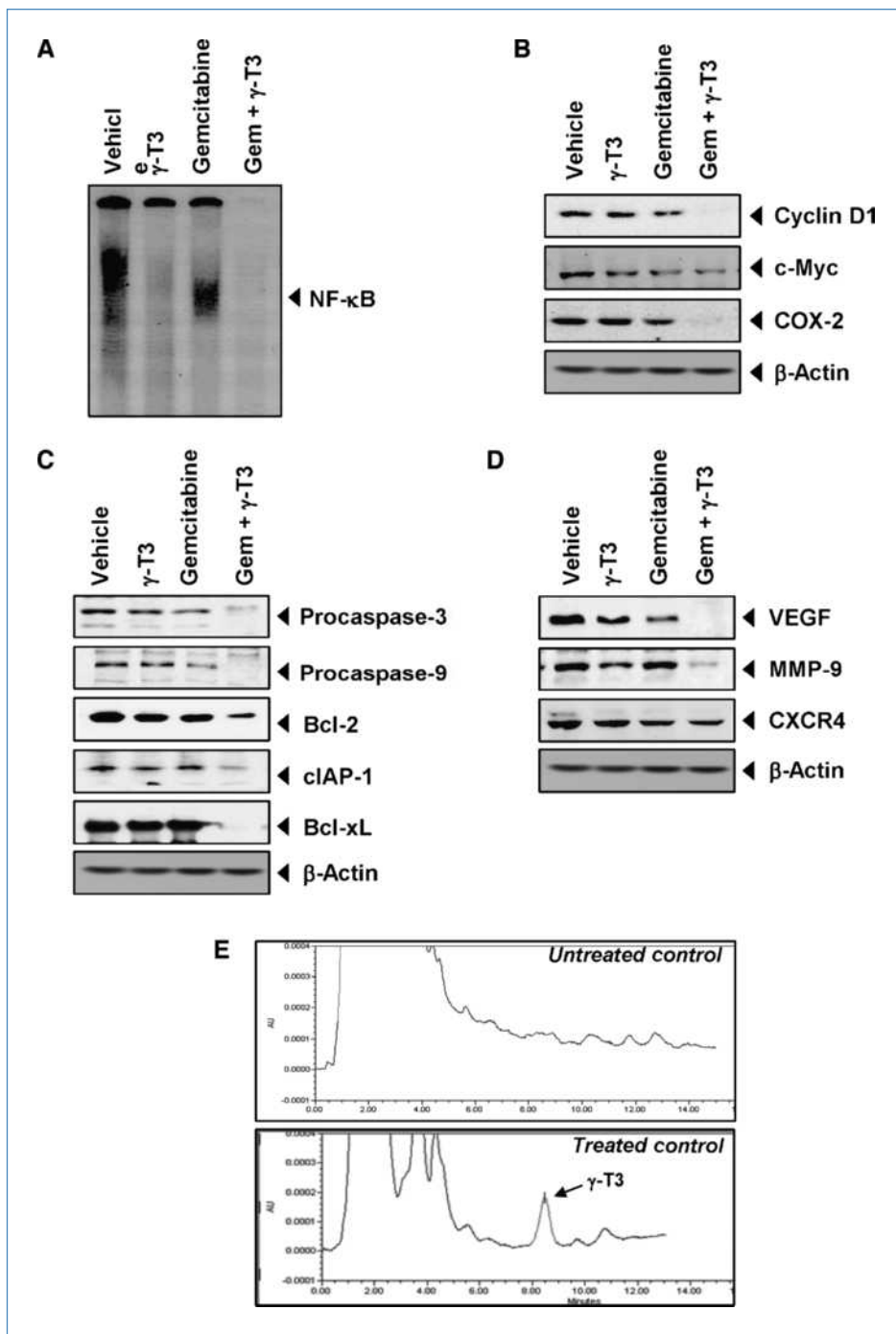
the mechanism in detail (17). We found that downregulation of cell proliferative gene products such as cyclin D1, c-Myc, and COX-2 could account for the suppression of cell proliferation by γ -T3.

Our study is the first report to suggest that γ -T3 can enhance the apoptotic effect of gemcitabine in various pancreatic cancer cell lines *in vitro*. Previously, it has been reported that γ -T3 can enhance the effect of gefitinib, docetaxel, celecoxib, and statins against various human cancers (18–20, 27). Although different cancer has its own property and therapeutic strategy, the synergistic action of γ -T3 is partially confirmed.

We found that this effect may be mediated through the downregulation of cell survival proteins such as Bcl-2, cIAP-1 and survivin by γ-T3. Moreover, constitutive NF-κB expressed in human pancreatic cancer cell lines has been linked with chemoresistance (3). We found that this NF-κB activation in cell lines was also suppressed by γ-T3. These results are consistent with those previously reported for curcumin (29) and resveratrol (33). Hussein and Mo

showed that mevalonate reversed the effect of δ-T3, thus implicating the role of f3-hydroxy-f3-methylglutaryl CoA (HMG-CoA) in action of δ-T3. Furthermore, lovastatin, an inhibitor of HMG-CoA reductase, potentiated the antiproliferative effect of δ-T3 (17, 34). These results suggest that γ-T3 can be used in combination with gemcitabine and lovastatin, as γ-T3 is known to also inhibit HMG-CoA reductase (35–37). Similarly, we have shown previously that

Figure 6. γ-T3 enhances the effect of gemcitabine against the expression of NF-κB and NF-κB-regulated gene products in pancreatic cancer samples. A, detection of NF-κB by DNA binding in orthotopic tumor tissue samples showed the inhibition of NF-κB by γ-T3. B, Western blot analysis showed that γ-T3 and gemcitabine together inhibited the expression of NF-κB-dependent proliferative gene products cyclin D1, c-Myc, and COX-2. C, Western blot analysis showed that γ-T3 and gemcitabine together inhibited the expression of caspase-3, caspase-9, Bcl-2, cIAP-1, and Bcl-xL in pancreatic tumor tissues. D, Western blot analysis showed that γ-T3 and gemcitabine together inhibited the expression of metastatic and angiogenic genes VEGF, MMP-9, and CXCR4 in pancreatic tumor tissues. Samples from three animals in each group were analyzed, and representative data are shown. E, uptake of γ-T3 by pancreatic tissue in mice HPLC chromatogram of γ-T3 mobile phase.



both statins and γ -T3 are potent inhibitors of NF- κ B activation (16, 38).

We found for the first time that p.o. administration of γ -T3 alone inhibited the growth of human pancreatic tumors when examined *in vivo* in an orthotopic nude mice model. Tumor growth was inhibited by almost 50% by 400 mg/kg γ -T3 alone, and this level of inhibition was comparable with that reduced by gemcitabine alone. γ -T3 was very well tolerated by the animals. When the two agents were used in combination, they were found to be much more effective.

How γ -T3 exhibited its effects *in vivo* were also investigated in several ways. First, analysis of Ki-67 revealed that γ -T3 inhibited its proliferation in tumor tissues. Likewise, analysis of NF- κ B in pancreatic tumors showed that γ -T3 alone inhibited constitutive activation of NF- κ B. γ -T3 significantly downregulated the expression of proinflammatory marker COX-2, suppressed the expression of invasion biomarker MMP-9, and inhibited the angiogenic biomarker VEGF in the tissues. All of these effects were further enhanced by gemcitabine. The synergistic interaction between the two agents for down-modulation of various biomarkers was more apparent by Western blot analysis than by immunohistochemical analysis. All these data indicate for the first time the mechanisms by which γ -T3 could exhibit its effects against human pancreatic cancer.

We also found a significant presence of intact γ -T3 in the pancreatic tumor tissue (94.12 ng/g). These results agree with those reported by Husain and colleagues (39) in a previous study of δ -T3. They showed that δ -T3, when given p.o. at 100 mg/kg to mice, has a peak plasma concentration of 57 μ mol/L at 2 hours, plasma T_{1/2} of 3.5 hours. Six-week feeding of δ -T3 gave a tissue level of 41 nmol/L/g tissue; levels were 10 times higher in pancreas than in tumor or liver tissue (39).

Vitamin E consists of four different isoforms of tocopherols and of tocotrienols (12). Among the tocotrienols, it

seems that anticancer activities are limited to only γ and δ forms. Why α and β forms of tocotrienols exhibit minimal anticancer activities is not understood at present. Differential cellular uptake, membrane insertion, bioavailability, antioxidant or anti-inflammatory potential may account for these differences.

Overall, our results show for the first time that γ -T3 potentiates the antitumor activity of gemcitabine by inhibiting NF- κ B and NF- κ B-regulated gene products, leading to the inhibition of proliferation, angiogenesis, and invasion. However, further studies are necessary to confirm our findings in patients with pancreatic cancer. Considering that tocotrienols, although structurally homologous to tocopherols, exhibit distinct molecular targets, they merit further exploration.

Disclosure of Potential Conflicts of Interest

No potential conflicts of interest were disclosed.

Acknowledgments

We thank Markeda Wade for carefully proof reading the manuscript and providing valuable comments. Dr. Aggarwal is the Ransom Horne, Jr., Professor of Cancer Research.

Grant Support

Malaysian Palm Oil Board, NIH core grant CA-16 672, NIH program project grant NIH CA-124787-01A2, and Center for Targeted Therapy of M.D. Anderson Cancer Center.

The costs of publication of this article were defrayed in part by the payment of page charges. This article must therefore be hereby marked *advertisement* in accordance with 18 U.S.C. Section 1734 solely to indicate this fact.

Received 06/28/2010; revised 08/18/2010; accepted 09/06/2010; published OnlineFirst 09/23/2010.

References

1. <http://www.cancer.gov/cancertopics/types/pancreatic>.
2. Aggarwal BB. Nuclear factor- κ B: the enemy within. *Cancer Cell* 2004; 6:203–8.
3. Arit A, Gehrz A, Muerkoster S, et al. Role of NF- κ B and Akt/PI3K in the resistance of pancreatic carcinoma cell lines against gemcitabine-induced cell death. *Oncogene* 2003;22:3243–51.
4. Liptay S, Weber CK, Ludwig L, et al. Mitogenic and antiapoptotic role of constitutive NF- κ B/Rel activity in pancreatic cancer. *Int J Cancer* 2003;105:735–46.
5. Wang W, Abbruzzese JL, Evans DB, et al. The nuclear factor- κ B RelA transcription factor is constitutively activated in human pancreatic adenocarcinoma cells. *Clin Cancer Res* 1999;5:119–27.
6. Fujioaka S, Sclabas GM, Schmidt C, et al. Function of nuclear factor κ B in pancreatic cancer metastasis. *Clin Cancer Res* 2003;9:346–54.
7. Greten FR, Weber CK, Greten TF, et al. Stat3 and NF- κ B activation prevents apoptosis in pancreatic carcinogenesis. *Gastroenterology* 2002;123:2052–63.
8. Yamamoto Y, Gaynor RB. Therapeutic potential of inhibition of the NF- κ B pathway in the treatment of inflammation and cancer. *J Clin Invest* 2001;107:135–42.
9. Kornmann M, Ishiwata T, Itakura J, et al. Increased cyclin D1 in human pancreatic cancer is associated with decreased postoperative survival. *Oncology* 1998;55:363–9.
10. Xiong HQ, Abbruzzese JL, Lin E, et al. NF- κ B activity blockade impairs the angiogenic potential of human pancreatic cancer cells. *Int J Cancer* 2004;108:181–8.
11. Yebra M, Filardo EJ, Bayna EM, et al. Induction of carcinoma cell migration on vitronectin by NF- κ B-dependent gene expression. *Mol Biol Cell* 1995;6:841–50.
12. Aggarwal BB, Sundaram C, Prasad S, Kannappan R. Tocotrienols, the vitamin E of the 21(st) century: its potential against cancer and other chronic diseases. *Biochem Pharmacol* 2010.
13. Sundram K, Khor HT, Ong AS, Pathmanathan R. Effect of dietary palm oils on mammary carcinogenesis in female rats induced by 7,12-dimethylbenz(a)anthracene. *Cancer Res* 1989;49:1447–51.
14. Kamal-Eldin A, Appelqvist LA. The chemistry and antioxidant properties of tocopherols and tocotrienols. *Lipids* 1996;31:671–701.
15. Shah SJ, Sylvester PW. γ -Tocotrienol inhibits neoplastic mammary epithelial cell proliferation by decreasing Akt and nuclear factor κ B activity. *Exp Biol Med (Maywood)* 2005;230:235–41.
16. Ahn KS, Sethi G, Krishnan K, Aggarwal BB. γ -Tocotrienol inhibits nuclear factor- κ B signaling pathway through inhibition of receptor-interacting protein and TAK1 leading to suppression of antiapoptotic gene products and potentiation of apoptosis. *J Biol Chem* 2007;282: 809–20.
17. Hussein D, Mo H. d-Delta-tocotrienol-mediated suppression of the proliferation of human PANC-1, MIA PaCa-2, and BxPC-3 pancreatic carcinoma cells. *Pancreas* 2009;38:e124–36.

18. Bachawal SV, Wali VB, Sylvester PW. Enhanced antiproliferative and apoptotic response to combined treatment of γ-tocotrienol with erlotinib or gefitinib in mammary tumor cells. *BMC Cancer* 2010;10:84.
19. Shirole AB, Sylvester PW. Synergistic anticancer effects of combined γ-tocotrienol and celecoxib treatment are associated with suppression in Akt and NFκB signaling. *Biomed Pharmacother* 2010;64:327–32.
20. Wali VB, Bachawal SV, Sylvester PW. Combined treatment of γ-tocotrienol with statins induce mammary tumor cell cycle arrest in G₁. *Exp Biol Med (Maywood)* 2009;234:639–50.
21. Samant GV, Sylvester PW. γ-Tocotrienol inhibits ErbB3-dependent PI3K/Akt mitogenic signalling in neoplastic mammary epithelial cells. *Cell Prolif* 2006;39:563–74.
22. Mizushima Y, Nakagawa K, Shibata A, et al. Inhibitory effect of tocotrienol on eukaryotic DNA polymerase λ and angiogenesis. *Biochem Biophys Res Commun* 2006;339:949–55.
23. Wells SR, Jennings MH, Rome C, et al. α-, γ- and δ-tocopherols reduce inflammatory angiogenesis in human microvascular endothelial cells. *J Nutr Biochem* 2009.
24. Shibata A, Nakagawa K, Sookwong P, et al. Tocotrienol inhibits secretion of angiogenic factors from human colorectal adenocarcinoma cells by suppressing hypoxia-inducible factor-1α. *J Nutr* 2008;138:2136–42.
25. Yam ML, Abdul Hafid SR, Cheng HM, Nesaretnam K. Tocotrienols suppress proinflammatory markers and cyclooxygenase-2 expression in RAW264.7 macrophages. *Lipids* 2009;44:787–97.
26. Gysin R, Azzi A, Visarius T. γ-tocopherol inhibits human cancer cell cycle progression and cell proliferation by down-regulation of cyclins. *FASEB J* 2002;16:1952–4.
27. Yap WN, Zaiden N, Luk SY, et al. *In vivo* evidence of γ-tocotrienol as a chemosensitizer in the treatment of hormone-refractory prostate cancer. *Pharmacology* 2010;85:248–58.
28. Kunnumakkara AB, Diagaradjane P, Anand P, et al. Curcumin sensitizes human colorectal cancer to capecitabine by modulation of cyclin D1, COX-2, MMP-9, VEGF and CXCR4 expression in an orthotopic mouse model. *Int J Cancer* 2009;125:2187–97.
29. Kunnumakkara AB, Guha S, Krishnan S, et al. Curcumin potentiates antitumor activity of gemcitabine in an orthotopic model of pancreatic cancer through suppression of proliferation, angiogenesis, and inhibition of nuclear factor-κB-regulated gene products. *Cancer Res* 2007;67:3853–61.
30. Khanbolooki S, Nawrocki ST, Arumugam T, et al. Nuclear factor-κB maintains TRAIL resistance in human pancreatic cancer cells. *Mol Cancer Ther* 2006;5:2251–60.
31. Yap SP, Julianto T, Wong JW, Yuen KH. Simple high-performance liquid chromatographic method for the determination of tocotrienols in human plasma. *J Chromatogr B Biomed Sci Appl* 1999;735:279–83.
32. Kumar KS, Raghavan M, Hieber K, et al. Preferential radiation sensitization of prostate cancer in nude mice by nutraceutical antioxidant γ-tocotrienol. *Life Sci* 2006;78:2099–104.
33. Harikumar KB, Kunnumakkara AB, Sethi G, et al. Resveratrol, a multi-targeted agent, can enhance antitumor activity of gemcitabine *in vitro* and in orthotopic mouse model of human pancreatic cancer. *Int J Cancer* 2010;127:257–68.
34. McAnally JA, Gupta J, Sodhani S, Bravo L, Mo H. Tocotrienols potentiate lovastatin-mediated growth suppression *in vitro* and *in vivo*. *Exp Biol Med (Maywood)* 2007;232:523–31.
35. Song BL, DeBose-Boyd RA. Insig-dependent ubiquitination and degradation of 3-hydroxy-3-methylglutaryl coenzyme a reductase stimulated by δ- and γ-tocotrienols. *J Biol Chem* 2006;281:25054–61.
36. Mo H, Elson CE. Studies of the isoprenoid-mediated inhibition of mevalonate synthesis applied to cancer chemotherapy and chemoprevention. *Exp Biol Med (Maywood)* 2004;229:567–85.
37. Parker RA, Pearce BC, Clark RW, Gordon DA, Wright JJ. Tocotrienols regulate cholesterol production in mammalian cells by post-transcriptional suppression of 3-hydroxy-3-methylglutaryl-CoA reductase. *J Biol Chem* 1993;268:11230–8.
38. Ahn KS, Sethi G, Aggarwal BB. Simvastatin potentiates TNF-α-induced apoptosis through the down-regulation of NF-κB-dependent antiapoptotic gene products: role of IκBα kinase and TGF-β-activated kinase-1. *J Immunol* 2007;178:2507–16.
39. Husain K, Francois RA, Hutchinson SZ, et al. Vitamin E δ-tocotrienol levels in tumor and pancreatic tissue of mice after oral administration. *Pharmacology* 2009;83:157–63.