

Vemurafenib and BRAF Inhibition: A New Class of Treatment for Metastatic Melanoma

Jason J. Luke¹ and F. Stephen Hodi²

Abstract

The U.S. Food and Drug Administration recently approved vemurafenib for the treatment of BRAF valine in exon 15, at codon 600 (V600E) mutant metastatic melanoma. Vemurafenib is a competitive small-molecule serine–threonine kinase inhibitor that functions by binding to the ATP-binding domain of mutant BRAF. Compared with dacarbazine chemotherapy, vemurafenib significantly improved the 6-month overall survival of patients from 64% to 84% and exhibited a response rate of approximately 50%. Median progression-free survival was also significantly improved with vemurafenib as compared with dacarbazine (5.3 versus 1.6 months, respectively), and this was consistent among groups analyzed, including age, sex, geography, Eastern Cooperative Oncology Group status, disease stage, and serum lactate dehydrogenase. The success of targeting melanoma genomics has created a paradigm shift for future drug development. Currently, the elucidation of resistant mechanisms to vemurafenib therapy remains an important area of active investigation that will shape rational drug treatments for melanoma. The development of vemurafenib, the role of BRAF targeting, and the changing landscape of treatment for melanoma provide a new foundation for clinical investigation. *Clin Cancer Res*; 18(1); 9–14. ©2011 AACR.

Introduction

The recent approval of vemurafenib by the U.S. Food and Drug Administration (FDA) for the treatment of BRAF valine in exon 15, at codon 600 mutant (BRAF^{V600E}) melanoma marks a paramount change in the clinical management of melanoma patients. Historically, treatment options for melanoma were limited. Chemotherapy has long been considered a standard of care; however, it is associated with a modest response rate and no proven overall survival benefit (1). Immunotherapy has also been of interest in melanoma. Although highly efficacious in a subset of patients, immunotherapy for melanoma currently lacks needed predictive biomarkers for efficacy and toxicities. The recent development of the CTLA-4–blocking monoclonal antibody ipilimumab (Yervoy; Bristol-Myers Squibb) has begun to change the previously limited enthusiasm for this type of treatment. Yet, even the benefit of ipilimumab in melanoma is still limited to a select number of patients (2). The identification of mutant BRAF as a therapeutic target and the emergence of vemurafenib open new avenues of

research and bring promise for personalized medicine to the clinical care of melanoma patients.

BRAF as Target in Melanoma

Signaling through and downstream of the mitogen-activated protein kinase (MAPK) pathway has been shown to drive the growth of most cutaneous melanomas (3). More specifically, mutations in NRAS and BRAF have been characterized to constitute up to approximately 80% of the driver lesions in this pathway (4, 5). BRAF itself accounts for approximately 60% of these, with greater than 90% of BRAF mutations resulting from the substitution of glutamic acid for V600E and affecting the kinase domain of the protein. The pharmacologic difficulties of developing inhibitors of the RAS isoforms are well documented (6, 7). However, given the preponderance of BRAF mutations in melanoma, interest in the development of inhibitors of BRAF has been sustained for nearly a decade.

Previous attempts to target RAF for therapeutic purposes have been unsuccessful. The multitargeted kinase inhibitor sorafenib was initially developed with this purpose in mind. Clinical trials eventually ruled out the utility of sorafenib as a single agent and in combination with chemotherapy (8, 9). The disappointing results with sorafenib brought into question whether BRAF could be adequately targeted in melanoma with therapeutic benefit. The successful development of vemurafenib has now overcome this uncertainty. Importantly, this process was accomplished through a greater understanding of the RAF isoforms and a novel pharmacologic development strategy that allowed selective

Authors' Affiliations: ¹Melanoma and Sarcoma Service, Memorial Sloan-Kettering Cancer Center and Weill Cornell Medical College, New York, New York; ²Melanoma Disease Center, Dana-Farber Cancer Institute and Harvard Medical School, Boston, Massachusetts

Corresponding Author: F. Stephen Hodi, Dana-Farber Cancer Institute, 450 Brookline Avenue, Boston, MA 02215. Phone: 617-632-5053; Fax: 617-582-7992; E-mail: Stephen_hodi@dfci.harvard.edu

doi: 10.1158/1078-0432.CCR-11-2197

©2011 American Association for Cancer Research.

and potent (>80%) inhibition of the V600E protein (10), while still maintaining a tolerable side effect profile and oral delivery route.

Upon growth signaling, such as activation of RAS, normal BRAF forms both homo- and heterodimers with the other RAF isoforms CRAF and CRAF (also known as RAF1). These dimers then cause activation of MAP/extracellular signal-regulated kinase (ERK) kinase (MEK) and continued signaling down the MAPK pathway. Mutated BRAF, however, signals as a monomer, independent of upstream growth stimuli. Treatment with vemurafenib leads to inhibition of downstream signaling by mutant BRAF monomers. In addition, vemurafenib can also cause activation of downstream MEK by normal RAF homo- and heterodimers in non-BRAF mutated cells (11), which has been shown to be caused by transactivation of the nondrug-bound partner in BRAF to CRAF heterodimers and CRAF to CRAF homodimers (12). This interaction of different isoforms, and the nonselectivity of the prior generation of RAF inhibitors for BRAF^{V600E}, explains the failure of sorafenib. Sorafenib is at least as potent and likely more potent than vemurafenib against wild-type B- and CRAF as opposed to mutant BRAF.

The paradoxical activation of MEK by nonmutant RAFs not only outlines the specificity of vemurafenib for mutant BRAF, but also provides an explanation for the vemurafenib treatment complication of squamous cell carcinoma (SCC) development. Via *in vitro* systems, it has been documented that MEK activation after BRAF^{V600E} inhibition is accomplished by BRAF/CRAF dimerization and subsequent CRAF signaling (13). This sequence has been confirmed by experiments inactivating (kinase-dead) BRAF, showing a similar effect to BRAF-inhibiting agents leading to downstream activation of MEK (14). A second model has proposed dose dependence for downstream MEK activation or inhibition on the basis of lower or higher doses of BRAF inhibitors (12). Interestingly, both of these experimental models require upstream activation, such as RAS or epidermal growth factor receptor activation. Such activation would not be unexpected in otherwise nonmalignant skin tissue that was previously exposed to ultraviolet light exposure; however, this has not been explicitly shown *in vivo* to date.

The development of a second malignancy during treatment, such as SCC with vemurafenib, is of concern; however, the clinical significance of these lesions needs to be considered closely. Although the MEK/ERK activation seen in nonmalignant tissue seems to be a mechanistic side effect of vemurafenib, the resultant lesions identified have not posed a significant clinical problem. These lesions have uniformly been removed without clinical sequelae (15). In fact, it has been proposed that the description of these lesions as SCC may be a pathologic misclassification, given that SCC implies a disease with an eventual possibility of metastatic spread. Instead, the lesions in question tend to act in a manner more consistent with keratoacanthoma and, thus, are unlikely to do more than grow locally. Monitoring for the growth of these lesions will clearly be a part of clinical

care of patients being treated with vemurafenib going forward, however.

Preclinical Data

Vemurafenib [Zelboraf; Genentech; PLX4032, RG7204, RO5185426, *N*-(3-{[5-(4-chlorophenyl)-¹H-pyrrolo[2,3-b]pyridin-3-yl]carbonyl}-2,4-difluorophenyl)propane-1-sulfonamide] is an oral serine-threonine kinase inhibitor. Owing to the failure of prior BRAF inhibitors, a structure-guided discovery approach was pursued to identify molecules containing a pyridoimidazolone compatible with the ATP pocket-binding domain of BRAF. PLX4720, a 7-azaindole derivative, was the initial result of these investigations (16). This molecule established a new class of more specific kinase inhibitors with selectivity for mutant BRAF^{V600E}. Subsequent studies showed marked effects on apoptosis, proliferation, and blockade of downstream ERK phosphorylation. These findings translated into inhibition of growth in V600E mutant melanoma cell lines, as well as tumor regression in xenograft models. Via this drug discovery approach, a panel of related small molecules was also discovered including PLX4032 (vemurafenib). PLX4720 and PLX4032 were evaluated simultaneously. Owing to a more advantageous pharmacokinetic profile in dogs and cynomolgus monkeys, vemurafenib was chosen to take forward into further clinical development (10).

Vemurafenib was shown to be highly specific for BRAF^{V600E} with an inhibitory concentration at 50% (IC₅₀) of 31 nmol/L. In melanoma cell lines as well as melanoma and colon cancer xenografts, vemurafenib was observed to inhibit tumor growth in a dose-dependent fashion (17). Animal studies in rats and beagle dogs showed no significant toxicity at a 1,000 mg/kg/day on a 28-day dosing schedule or in longer studies with effective exposures tested up to 2,600 μmol/L in rats and 820 μmol/L in beagle dogs (10). Notably, the effective exposure described in rats is higher than that administered to human patients.

Clinical Studies

The initial phase I trial of vemurafenib included a 55-patient dose escalation followed by a dose expansion of 32 patients (18). All advanced solid tumor patients were eligible for participation in the dose escalation; however, tumors associated with a high incidence of BRAF^{V600E} mutation made up the bulk of the accrual (49 melanoma, 3 thyroid, 1 rectal, 1 ovarian carcinoma). Eligibility requirements of note included Eastern Cooperative Oncology Group (ECOG) performance status of 0 or 1 and the absence of brain metastases. Patients received daily drug dosing until the development of toxicity or progression of disease. Vemurafenib was initially developed in a crystalline formulation and administered at a starting dose of 200 mg daily. After 26 patients were treated, accrual was stopped because of poor pharmacokinetics. Serum sampling revealed that available drug levels were lower than required for efficacy based on preclinical modeling. The drug was

then reformulated into a more highly bioavailable micro-precipitated powder, available as an oral capsule, and accrual was restarted. Twenty-nine patients were treated to a maximum dose administered of 1,120 mg twice daily. After reformulation, the pharmacokinetics of vemurafenib showed a linear increase in mean area under the curve with increasing dose level. Additionally, a mean maximum concentration at steady state of approximately 86 $\mu\text{mol/L}$ and mean half-life of approximately 50 hours were documented.

Vemurafenib was generally well tolerated with no dose-limiting toxicity until the 720-mg twice-daily dose level was initiated. Dose-limiting toxicities observed at the maximum administered dose included rash, fatigue, and arthralgia. SCC (nearly always keratoacanthoma type) was an unexpected side effect seen during the dose escalation. The recommended phase II dose was deemed to be 960 mg twice daily. From doses of 240 mg twice daily and higher, 11 out of 16 melanoma patients were observed to obtain a response, with 10 partial responses and 1 complete response. Additionally, 3 patients with papillary thyroid cancer had responses.

The phase I dose expansion accrued only melanoma patients documented to harbor BRAF^{V600E} mutations and showed a striking response rate. Twenty-six of 32 patients (81%) exhibited a response, and some experienced marked improvement in quality of life, as indicated by decreased narcotic use. The median progression-free survival (PFS) of responders was greater than 7 months, and toxicities seen in the dose expansion were similar to those seen in the dose escalation. Approximately 40% of patients required dose reduction, and approximately one third of patients had development of keratoacanthoma-type SCC.

Given these impressive results, vemurafenib was rapidly taken into phase II and phase III trials in melanoma. The results of the phase II study (BRIM-2) were presented at the American Society of Clinical Oncology meeting in 2011 (19). Notable eligibility criteria for the study included documentation of BRAF^{V600E} mutation, exposure to a prior line of therapy, ECOG status of 0 or 1, and no evidence of brain metastases. The primary endpoint of the study was best overall response rate, and a prespecified stratification by age, stage (M1a–c), performance status, and lactate dehydrogenase (LDH) was pursued.

A total of 132 patients were treated in BRIM-2 at 960 mg twice daily. The primary endpoint of the study was met with a 52% response rate. Benefit was seen across all dose levels; however, the benefit was less robust in patients who had elevated LDH at the start of treatment. The median duration of response was 6.8 months, with a median PFS of 6.2 months. Toxicities were similar to those observed in the phase I study, with arthralgia, rash, photosensitivity, fatigue, alopecia, pruritus, and skin papilloma making up the majority of grade 1 to 2 events. Grade 3 events were predominantly rash, arthralgia, and liver function abnormalities. SCC, majority keratoacanthoma type, was again seen at the frequency of 24%. Approximately 40% of patients required dose reductions during treatment on study.

The results of the phase III (BRIM-3) study of vemurafenib in BRAF^{V600E} mutant melanoma were recently published (20), and these data have now led to FDA approval. BRIM-3 was a 2-arm randomized study comparing vemurafenib, 960 mg orally twice daily, to dacarbazine chemotherapy, 1,000 mg/m² administered every 3 weeks. The initial primary endpoint was overall survival; PFS was later added as a coprimary endpoint after the results of the phase I and II studies were available. Eligibility requirements were similar to those for BRIM-2, necessitating the patient's tumor to harbor the mutation in BRAF^{V600E}, good performance status, and no history of central nervous system metastases. Notably, 20 patients treated on study were eventually found to have non-V600E mutations (19 V600K, 1 V600D).

Within 1 calendar year, 2,107 patients were screened and 675 patients were randomized 1:1 for treatment on either study arm of BRIM-3. Patients were stratified by age, stage, performance status, geography, and LDH. The arms of the study were well balanced. A planned interim analysis after 196 study deaths by an independent review board recommended cross-over of all patients being treated on the decarbazine arm, as the study coprimary endpoints had been met. Overall survival at 6 months was found to be 84% in the vemurafenib arm and 64% in the decarbazine arm. PFS could be evaluated in 81% (549 out of 675) of patients, with a median value of 5.3 months for the vemurafenib arm versus 1.6 months for the decarbazine arm. The survival benefit of vemurafenib was observed to be consistent in all subgroups, including LDH. The hazard ratio for tumor progression in the vemurafenib arm was 0.26, with a 95% confidence interval of 0.2 to 0.3. The response rate of each arm was 48% for vemurafenib (2 complete responses) and 5% for decarbazine. Additionally, nearly all patients receiving vemurafenib obtained some tumor regression even if this did not meet Response Evaluation Criteria in Solid Tumors 1.1 criteria for a response. Of the 20 non-V600E mutant patients treated, 10 patients (all V600K) were randomized to the vemurafenib arm. Of these, 4 patients had partial responses.

Vemurafenib was well tolerated in the BRIM-3 trial, with the incidence of grade 1 to 2 and grade 3 to 4 adverse events similar to those from prior studies. Notably, 38% of patients required dose reduction in the vemurafenib arm. Sixty-one patients (18%) had development of SCC, keratoacanthoma type; however, all were treated with local therapies. The response duration was not calculated, as an insufficient number of patients had progressed at the time of publication.

Pharmacodynamics

BRAF is an intermediary in signal transduction through the MAPK pathway. Activation of BRAF is associated with downstream activation of ERK, subsequent elevations of cyclin D1, and an overall increase in cellular proliferation. Treatment with vemurafenib in clinical trials has been

associated with reductions in all of these markers. In the vemurafenib phase I dose escalation, pre- and posttreatment (day 15) tumor biopsies were obtained from all patients and analyzed by immunohistochemistry for pharmacodynamic effects (10). Nuclear and cytosolic ERK pathway activation was observed before and after treatment. Although a plasma exposure of at least 300 μmol/L was required to see tumor volume reduction, treatment at nearly all dose levels was associated with reduction in phosphorylated ERK (*p*-ERK) and proliferation by Ki-67. Decreases in cytoplasmic *p*-ERK, but not nuclear *p*-ERK, correlated with clinical benefit. Importantly, those patients obtaining a clinical response showed an at least 80% reduction in cytoplasmic *p*-ERK staining. Similarly, in the phase I dose expansion, 7 patients had pre- and posttreatment biopsies (18). All posttreatment specimens analyzed revealed marked reductions in *p*-ERK, cyclin D1, and Ki-67 after 2 weeks of treatment with vemurafenib. Inhibition of mutant BRAF-induced metabolic activity has also been documented. In nearly all patients (independent of confirmed clinical response), a marked decrease in the 2[18F]fluoro-2-deoxy-D-glucose avidity of tumor lesions by positron emission tomography can be observed by 2 weeks of treatment. These results reinforce the exquisite sensitivity of BRAF^{V600E} for vemurafenib and imply that near complete MAPK pathway inhibition is required to obtain clinical benefit in the treatment of melanoma driven by mutant BRAF.

Comparison with Other Agents

Major changes have taken place in the clinical management of melanoma over the past year. Ipilimumab was approved for treatment of metastatic melanoma independent of line of therapy, and vemurafenib is now available. These drugs sit in stark contrast to one another by mechanism, clinical treatment course, and long-term outcome. The time course of response with ipilimumab is variable, and inherent in the use of this agent is allowance for potential nonclinically significant progression of disease prior to clinical response (21). Further, although the response rate of ipilimumab was described as approximately 10% to 15% (2, 22), ipilimumab has shown the ability to induce long-term stable disease and complete remissions. By contrast, vemurafenib has a response rate of greater than 50% and is associated with rapid improvement in quality of life. It is not, however, associated with long-term complete remissions, but rather has a median PFS on the order of 6 to 7 months. Therefore, the use of these agents should be considered not necessarily as competing alternatives, but rather cooperating possibilities available for use as dictated by patient circumstance. One area of clinical investigation of great interest is the potential that vemurafenib and ipilimumab may be synergistic. Whereas nonspecific inhibitors of the MAPK pathway such as MEK inhibitors have been reported to reduce T-cell function (23), vemurafenib has no known effect on the immune system to date (presumably at least partly due to its V600E specificity). Furthermore, treatment with vemurafenib has been shown to increase

melanoma differentiation antigen (gp100, MART-1, Tryp-1) expression and improve antigen-specific T-cell recognition (23). A much anticipated clinical trial combining these 2 agents will begin to accrue patients in the near future.

Patient Selection

Therapeutic treatment with vemurafenib is dependent on molecular selection of patients by BRAF mutational status. A commercial assay, known as cobas 4800 BRAF^{V600} mutation test (24), was FDA approved in conjunction with vemurafenib and is now available for clinical use (Table 1). This test is a real-time PCR assay designed to detect the BRAF^{V600E} (T1799A) mutation. The cobas BRAF test is highly predictive for V600E; however, it also detects other BRAF^{V600} mutations with less sensitivity, which may be important going forward, given the variable incidence of other BRAF^{V600} mutations in subpopulations of melanoma patients, such as older patients in whom the incidence of V600K mutations has been reported to be above 20% (25, 26). Although vemurafenib has not been evaluated thoroughly in these patients, it does seem that the drug has clinically relevant activity.

Conclusions and Future Directions

Vemurafenib has established a new paradigm for targeted drug development and rapid clinical actualization.

Table 1. cobas 4800 BRAF specifications and BRAF^{V600} isoform detection

Specifications and mutation detection cobas 4800 BRAF ^{V600} mutation test	
Parameter	Requirements
Clinical specimen required	FFPET slide (≥5-μm section)
Limit of detection of FFPET	5% mutant allele ^a
Minimal tumor content within specimen	15%
DNA requirement within specimen	125 ng
Mutation detection	
V600 isoform	Agreement with Sanger sequencing
V600E	97.3%
V600K	65.8%
Other V600	Not established ^b

Abbreviation: FFPET, formalin-fixed paraffin-embedded tissue.

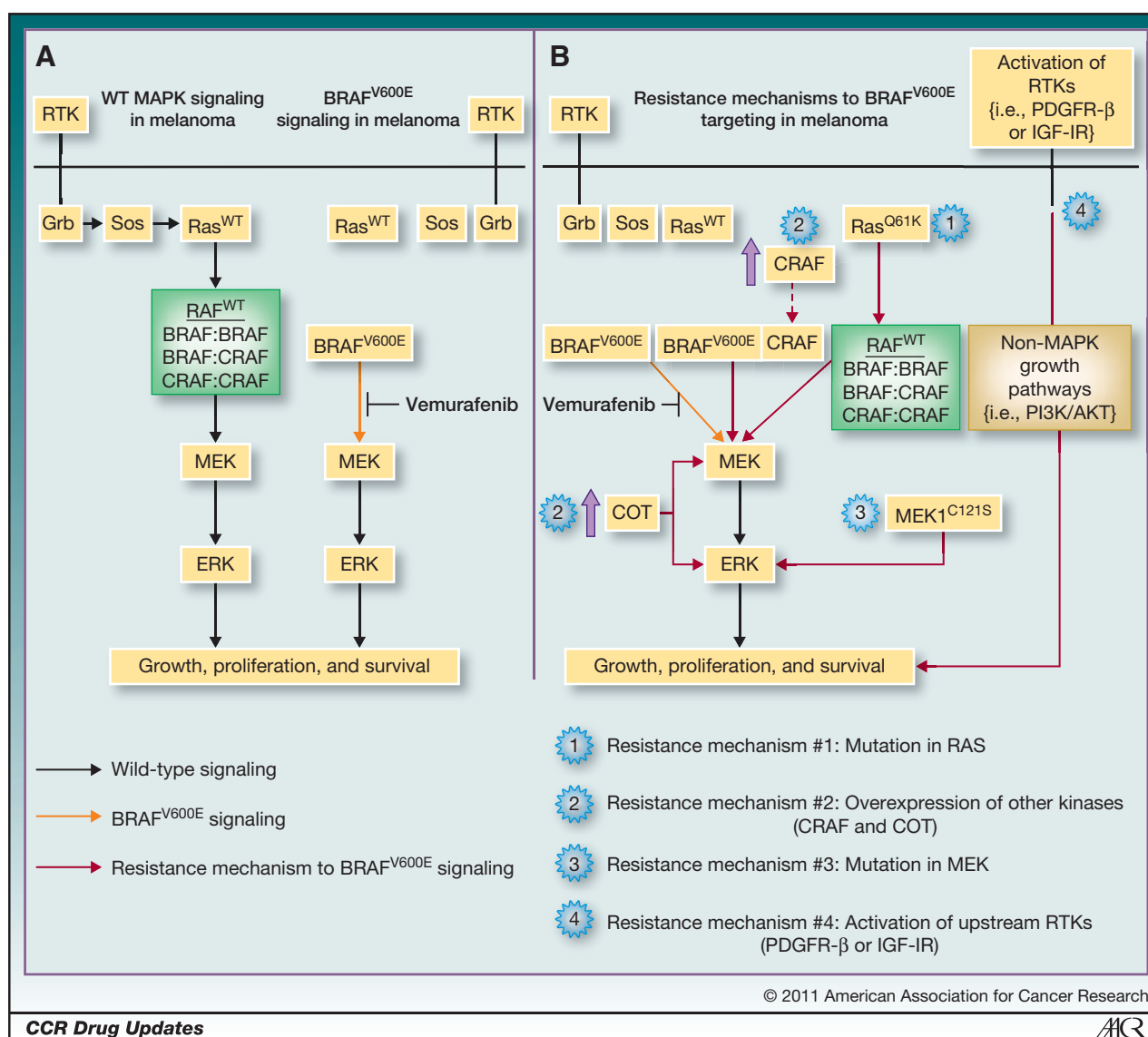
^aCompared with 20% for Sanger sequencing.

^bInsufficient sample size for assessment of V600D, V600E₂, and V600R.

Vemurafenib shows a high response rate in BRAF^{V600E} mutant melanoma and survival advantage in comparison with chemotherapy. However, for most patients, the clinical benefit is limited, with a PFS just greater than 6 months. Already mechanisms of resistance to vemurafenib therapy have begun to be elucidated, and clinical programs attempting to abrogate both this and the on-target toxicities of BRAF inhibition are being pursued.

At least 4 mechanisms of resistance to vemurafenib have been described to date. These mechanisms include

upstream of mutation of NRAS, activation of membrane-bound receptor tyrosine kinases [platelet-derived growth factor receptor- β (PDGFR- β)], with subsequent signaling through other growth pathways [phosphoinositide 3-kinases (PI3K)/AKT (27), overexpression of COT (28), and downstream mutation of MEK (Fig. 1; ref. 29)]. Novel combination regimens (BRAF plus MEK or BRAF plus PI3K/AKT inhibitors) are currently being evaluated in clinical trials in hopes of circumventing resistance mechanisms. The combination of BRAF plus MEK inhibitors is also being



CCR Drug Updates ACR

Figure 1. MAPK signaling in melanoma: wild-type (WT), with vemurafenib treatment and current resistance mechanisms to vemurafenib treatment. A preponderance of melanomas are driven by MAPK signaling. Under wild-type conditions (A, left), RAF isoforms dimerize upon upstream stimulation of receptor tyrosine kinases and signaling through RAS to RAF. RAF dimers then signal through MEK and ERK, eventually leading to downstream growth, proliferation, and survival. In BRAF^{V600E} mutant melanoma (A, right), signaling between RAS and RAF is disconnected because of the constitutive, oncogenic signaling by mutant BRAF. Vemurafenib inhibits signaling by BRAF^{V600E} leading to apoptosis of these cells. B, multiple mechanisms of resistance to vemurafenib have been described to date. Predominantly, these mechanisms have included mechanisms for reactivation of MAPK signaling (1, upstream mutation of RAS^{O61K}; 2, overexpression of other kinases that bypass BRAF^{V600E}, such as CRAF or COT; or, 3, downstream mutation of MEK^{C121S}). 4, signaling through alternative growth pathways by activation of upstream receptor tyrosine kinases has also been described. IGF-IR, insulin-like growth factor receptor I; RTK, receptor tyrosine kinase.

evaluated in the treatment-naïve setting under the hypothesis that the addition of MEK inhibition will abrogate the on-target toxicity of SCC development.

Moreover, it is unclear at this time whether combination regimens of vemurafenib and other agents will be of increased benefit. It does seem very likely, however, that combining vemurafenib with other targeted agents, particularly those specific for resistant pathways, will prove fruitful. Furthermore, vemurafenib is likely to be useful in diseases beyond melanoma, given that BRAF is the most commonly mutated oncogenic kinase in the human genome. Multiple other cancers including thy-

roid, colon, lung, and ovarian cancer harbor V600E mutations in varying incidence and are worthy of additional clinical testing.

Disclosure of Potential Conflicts of Interest

F.S. Hodi, clinical trial research support, Genentech/Roche, Bristol-Myers Squibb, Novartis, Pfizer, and Synta; nonpaid consultant, Genentech, Roche, Novartis, and Bristol-Myers Squibb. J.J. Luke disclosed no potential conflicts of interest.

Received September 30, 2011; revised October 21, 2011; accepted November 6, 2011; published OnlineFirst November 14, 2011.

References

- Chapman PB, Einhorn LH, Meyers ML, Saxman S, Destro AN, Panageas KS, et al. Phase III multicenter randomized trial of the Dartmouth regimen versus dacarbazine in patients with metastatic melanoma. *J Clin Oncol* 1999;17:2745-51.
- Hodi FS, O'Day SJ, McDermott DF, Weber RW, Sosman JA, Haanen JB, et al. Improved survival with ipilimumab in patients with metastatic melanoma. *N Engl J Med* 2010;363:711-23.
- Lopez-Bergami P. The role of mitogen- and stress-activated protein kinase pathways in melanoma. *Pigment Cell Melanoma Res* 2011;24:902-21.
- Davies H, Bignell GR, Cox C, Stephens P, Edkins S, Clegg S, et al. Mutations of the BRAF gene in human cancer. *Nature* 2002;417:949-54.
- Curtin JA, Fridlyand J, Kageshita T, Patel HN, Busam KJ, Kutzner H, et al. Distinct sets of genetic alterations in melanoma. *N Engl J Med* 2005;353:2135-47.
- Matallanas D, Crespo P. New druggable targets in the Ras pathway? *Curr Opin Mol Ther* 2010;12:674-83.
- Van Cutsem E, van de Velde H, Karasek P, Oettle H, Vervenne WL, Szawlowski A, et al. Phase III trial of gemcitabine plus tipifarnib compared with gemcitabine plus placebo in advanced pancreatic cancer. *J Clin Oncol* 2004;22:1430-8.
- Hauschild A, Agarwala SS, Trefzer U, Hogg D, Robert C, Hersey P, et al. Results of a phase III, randomized, placebo-controlled study of sorafenib in combination with carboplatin and paclitaxel as second-line treatment in patients with unresectable stage III or stage IV melanoma. *J Clin Oncol* 2009;27:2823-30.
- Eisen T, Ahmad T, Flaherty KT, Gore M, Kaye S, Marais R, et al. Sorafenib in advanced melanoma: a Phase II randomised discontinuation trial analysis. *Br J Cancer* 2006;95:581-6.
- Bollag G, Hirth P, Tsai J, Zhang J, Ibrahim PN, Cho H, et al. Clinical efficacy of a RAF inhibitor needs broad target blockade in BRAF-mutant melanoma. *Nature* 2010;467:596-9.
- Joseph EW, Pratilas CA, Poulikakos PI, Tadi M, Wang W, Taylor BS, et al. The RAF inhibitor PLX4032 inhibits ERK signaling and tumor cell proliferation in a V600E BRAF-selective manner. *Proc Natl Acad Sci U S A* 2010;107:14903-8.
- Poulikakos PI, Zhang C, Bollag G, Shokat KM, Rosen N. RAF inhibitors transactivate RAF dimers and ERK signalling in cells with wild-type BRAF. *Nature* 2010;464:427-30.
- Hatzivassiliou G, Song K, Yen I, Brandhuber BJ, Anderson DJ, Alvarado R, et al. RAF inhibitors prime wild-type RAF to activate the MAPK pathway and enhance growth. *Nature* 2010;464:431-5.
- Heidorn SJ, Milagre C, Whittaker S, Noury A, Niculescu-Duvas I, Dhomen N, et al. Kinase-dead BRAF and oncogenic RAS cooperate to drive tumor progression through CRAF. *Cell* 2010;140:209-21.
- Robert C, Arnault JP, Mateus C. RAF inhibition and induction of cutaneous squamous cell carcinoma. *Curr Opin Oncol* 2011;23:177-82.
- Tsai J, Lee JT, Wang W, Zhang J, Cho H, Mamo S, et al. Discovery of a selective inhibitor of oncogenic B-Raf kinase with potent antimelanoma activity. *Proc Natl Acad Sci U S A* 2008;105:3041-6.
- Yang H, Higgins B, Kolinsky K, Packman K, Go Z, Iyer R, et al. RG7204 (PLX4032), a selective BRAFV600E inhibitor, displays potent antitumor activity in preclinical melanoma models. *Cancer Res* 2010;70:5518-27.
- Flaherty KT, Puzanov I, Kim KB, Ribas A, McArthur GA, Sosman JA, et al. Inhibition of mutated, activated BRAF in metastatic melanoma. *N Engl J Med* 2010;363:809-19.
- Ribas A, Kim KB, Schuchter LM, Gonzalez R, Pavlick AC, Weber JS, et al. BRIM-2: An open-label, multicenter phase II study of vemurafenib in previously treated patients with BRAF V600E mutation-positive metastatic melanoma. *J Clin Oncol* 2011;29:8509.
- Chapman PB, Hauschild A, Robert C, Haanen JB, Ascierto P, Larkin J, et al. BRIM-3 Study Group. Improved survival with vemurafenib in melanoma with BRAF V600E mutation. *N Engl J Med* 2011;364:2507-16.
- Wolchok JD, Hoos A, O'Day S, Weber JS, Hamid O, Lebbe C, et al. Guidelines for the evaluation of immune therapy activity in solid tumors: immune-related response criteria. *Clin Cancer Res* 2009;15:7412-20.
- Robert C, Thomas L, Bondarenko I, O'Day S, M D JW, Garbe C, et al. Ipilimumab plus dacarbazine for previously untreated metastatic melanoma. *N Engl J Med* 2011;364:2517-26.
- Boni A, Cogdill AP, Dang P, Udayakumar D, Njauw CN, Sloss CM, et al. Selective BRAFV600E inhibition enhances T-cell recognition of melanoma without affecting lymphocyte function. *Cancer Res* 2010;70:5213-9.
- Roche Molecular Systems, Inc.; Branchburg (NJ). cobas® 4800 BRAF V600 Mutation Test. Doc Rev 1.0. 2011 [cited 09/04/2011]. Available from: http://1roche.mylabonline.com/rs/roche/images/BRAF_US-IVDpackage_insert.pdf
- Long GV, Menzies AM, Nagrial AM, Haydu LE, Hamilton AL, Mann GJ, et al. Prognostic and clinicopathologic associations of oncogenic BRAF in metastatic melanoma. *J Clin Oncol* 2011;29:1239-46.
- Menzies AM, Visintin L, Chatfield MD, Carlino MS, Howle JR, Scolyer RA, et al. BRAF mutation by age-decade and body mass index in metastatic melanoma. *J Clin Oncol* 2011;29:8507.
- Nazarian R, Shi H, Wang Q, Kong X, Koya RC, Lee H, et al. Melanomas acquire resistance to B-Raf(V600E) inhibition by RTK or N-RAS upregulation. *Nature* 2010;468:973-7.
- Johannessen CM, Boehm JS, Kim SY, Thomas SR, Wardwell L, Johnson LA, et al. COT drives resistance to RAF inhibition through MAP kinase pathway reactivation. *Nature* 2010;468:968-72.
- Wagle N, Emery C, Berger MF, Davis MJ, Sawyer A, Pochanard P, et al. Dissecting therapeutic resistance to RAF inhibition in melanoma by tumor genomic profiling. *J Clin Oncol* 2011;29:3085-96.