

## Correction: Reduced p21<sup>WAF1/CIP1</sup> via Alteration of p53-DDX3 Pathway Is Associated with Poor Relapse-Free Survival in Early-Stage Human Papillomavirus-Associated Lung Cancer

In this article (Clin Cancer Res 2011;17:1895-905), which was published in the April 1, 2011, issue of *Clinical Cancer Research* (1), the cell lines presented in Fig. 1B, specifically the Western blotting bands used in E6-overexpressing A549 cells, are incorrect. The authors have provided a new version of Fig. 1 (below). The conclusions set forth in the article remain unchanged. The authors regret this error.

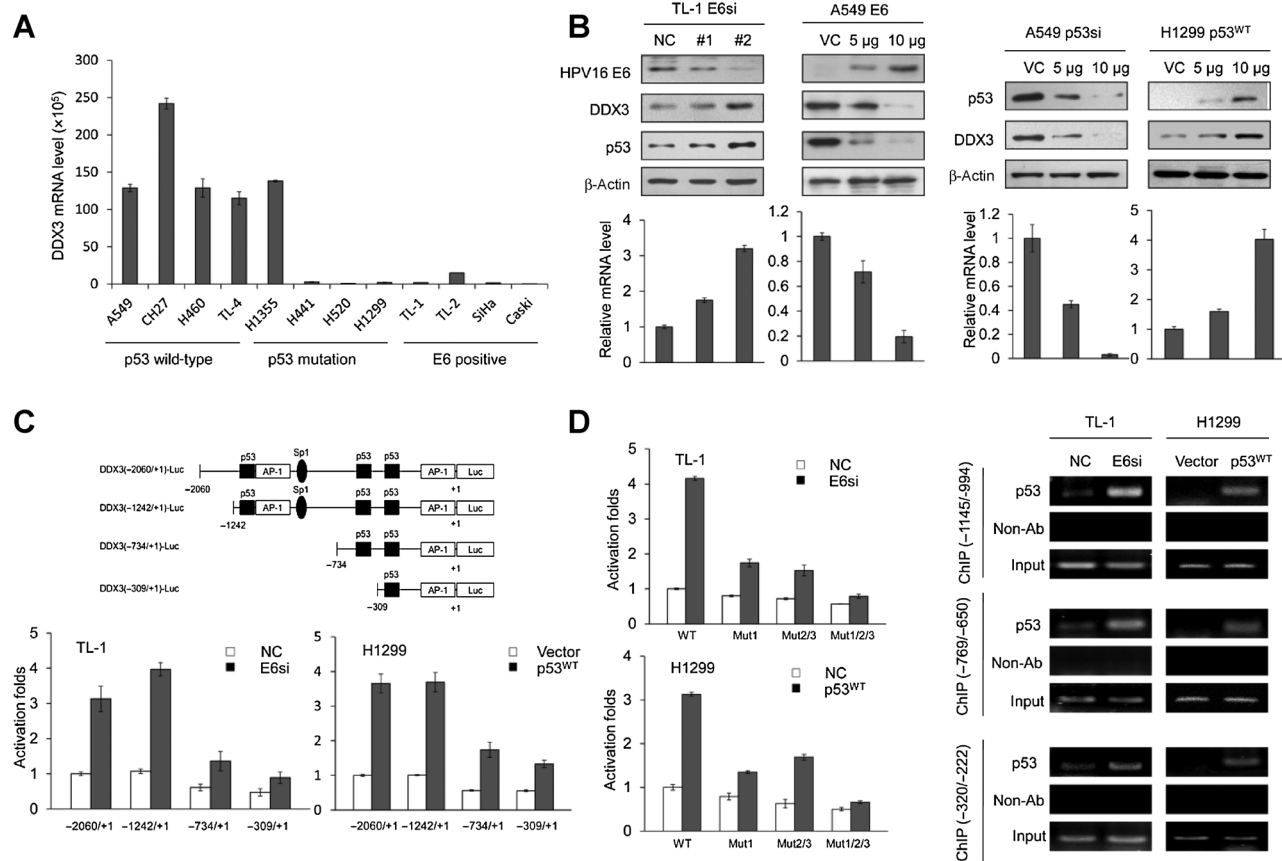


Figure 1.

### Reference

1. Wu D-W, Liu W-S, Wang J, Chen C-Y, Cheng Y-W, Lee H. Reduced p21<sup>WAF1/CIP1</sup> via alteration of p53-DDX3 pathway is associated with poor relapse-free survival in early-stage human papillomavirus-associated lung cancer. *Clin Cancer Res* 2011;17:1895-905.

Published online February 17, 2015.

doi: 10.1158/1078-0432.CCR-14-3282

©2015 American Association for Cancer Research.