

Once-Weekly Glucose-Lowering Therapy for Type 2 Diabetes

Susan LaRue, RD, CDE, Mary Beth DeYoung, PhD, Amy Blickensderfer, PharmD, and Steve Chen, MD

Editor's note: *Exenatide once weekly (QW), which was recently approved for patients with type 2 diabetes, has great potential as a new diabetes therapy in the primary care setting. This article, and the commentary that precedes it (p. 92), offer an overview of this new therapeutic tool and important insights about its clinical utility. In the interest of transparency, however, we want to point out that the authors of both articles are affiliated with Amylin Pharmaceuticals, Inc., which manufactures exenatide QW and markets it under the trade name Bydureon.*

Patients with chronic diseases such as osteoporosis or depression have been shown to adhere to treatment better with once-weekly medications than with more frequently dosed medications, but it is not known whether patients with type 2 diabetes will respond similarly.^{1,2} In an informal survey to assess patients' attitudes toward a once-weekly injectable therapy, ~40% of patients with type 2 diabetes thought that a once-weekly injectable therapy might improve their adherence.³

Exenatide once weekly (QW), a glucagon-like peptide-1 (GLP-1) receptor agonist, is the first and only glucose-lowering therapy indicated for once-weekly administration with diet and exercise to improve glycemic control in patients with type 2 diabetes. GLP-1 receptor agonists are a unique class of glucose-lowering therapy related to GLP-1,

a hormone produced in response to food intake that regulates blood glucose.^{4,5} GLP-1 is rapidly degraded by dipeptidyl peptidase-4 (DPP-4), so GLP-1 receptor agonists were developed to be resistant to DPP-4. GLP-1 receptor agonists reduce glucose by increasing the body's own insulin production and release and suppressing its release of glucagon.^{4,5} GLP-1 receptor activation also slows gastric emptying and increases satiety, which may assist patients with weight loss.^{4,5}

Several GLP-1 receptor agonists are available for use in the United States, including exenatide twice

daily, liraglutide once daily, and exenatide QW. Recent American Diabetes Association treatment guidelines recommend a GLP-1 receptor agonist as one option for second-line therapy in patients not achieving glycemic goals after treatment with lifestyle modification and metformin, except for patients who are markedly symptomatic or have elevated fasting glucose or A1C, who should be considered for treatment with insulin and possibly concomitant therapies.⁶ Recent American Association of Clinical Endocrinology guidelines state that GLP-1 receptor agonists are a useful additional therapy for patients achieving inadequate A1C control with oral monotherapy.⁷

Exenatide QW has been shown to provide continuous glucose control by gradually releasing exenatide, the active ingredient in exenatide twice daily, from subcutaneously injected microspheres.⁸ Exenatide-containing microspheres, which are about the diameter of a human hair, are made of the same material as dissolvable sutures and release exenatide by diffusion during degradation (Figure 1).⁹ The microspheres are administered through a 23-gauge needle after resuspension with vigorous shaking.

Regular, weekly administration of exenatide QW has been shown to result in consistent exenatide concentrations, although peak efficacy is not attained immediately.⁸ After two injections, the plasma concentration

IN BRIEF

Exenatide once weekly (QW), a glucagon-like peptide-1 receptor agonist, is the first and only glucose-lowering therapy approved for once-weekly administration to patients with type 2 diabetes. In clinical trials, significant reductions in A1C (–1.3 to –1.9%) and weight (–2 to –4 kg) were observed over 6 months with minimal risk of hypoglycemia in the absence of a sulfonylurea. Although the risk of injection-site reactions and mild to moderate gastrointestinal events increased after initiation of exenatide QW, tolerability improved over time. Reductions in A1C and weight were maintained for 3 years in patients who continued to use exenatide QW.

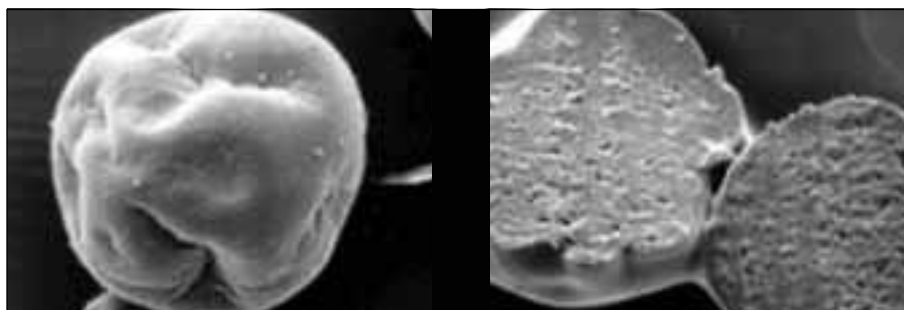


Figure 1. Electron micrograph of exenatide QW microspheres.⁹

of exenatide reaches the therapeutic range to affect fasting glucose, and steady-state plasma concentrations are reached after 6–7 weeks.^{8,10–12}

Efficacy in Clinical Trials

The clinical effectiveness and tolerability of exenatide QW were demonstrated in six randomized, active-controlled trials ($n = 3,223$) in which mean A1C reductions over ~6 months ranged from -1.3 to -1.9% in patients with baseline A1C values of 8.3 – 8.5% . Direct comparative trials showed that A1C reductions with exenatide QW were significantly greater than A1C reductions with sitagliptin, pioglitazone, exenatide twice daily, or insulin glargine, but significantly less than with liraglutide in type 2 diabetes patients already using one or more glucose-lowering therapies.^{12–16}

In pharmacological treatment-naïve patients, exenatide QW was shown to be more effective in reducing A1C than sitagliptin, as effective as metformin, and not as effective as pioglitazone (Figure 2A).¹⁷ Overall, the percentage of patients achieving an A1C of $< 7\%$ improved from none at baseline to between 52 and 77% at endpoint in patients treated with exenatide QW (Figure 2B). Decreases in both fasting and postprandial glucose were observed (Figure 2C).¹² Furthermore, treatment response to exenatide once weekly appeared to be consistent in patients of different ages, races, and durations of diabetes.¹⁸

Exenatide QW has been shown to reduce A1C in combination with metformin or in combination with a thiazolidinedione or sulfonylurea, but it has not been studied in combination with basal insulin.¹⁹ In an extension trial, patients continuing on exenatide QW therapy for up to 3 years demonstrated sustained mean A1C reductions of -1.6% and weight reductions of -2.3 kg.²⁰

In addition to demonstrating improved glucose control, exenatide QW therapy was associated with a mean weight loss of ~ -2 to -4 kg over ~ 6 months, which was sustained in 66% of patients at 3 years.^{12–17,20} In the randomized, controlled trials, weight loss with exenatide QW treatment was similar to that of exenatide twice daily or metformin; significantly greater than that of sitagliptin, pioglitazone, or insulin glargine; and slightly but significantly less than that of liraglutide (Figure 2D).^{12–17}

Exenatide QW has been demonstrated to improve blood pressure and lipids in addition to A1C and body weight. Average systolic blood pressure reductions of -6.2 mmHg were demonstrated in pooled extension data at 52 weeks.²¹ The systolic blood pressure reductions correlated weakly with weight loss, and the greatest reductions (-11.4 mmHg) were observed in patients with a baseline systolic blood pressure of ≥ 130 mmHg. Patients who continued exenatide QW therapy for 3

years ($n = 194$) exhibited sustained reductions in systolic blood pressure (-2 mmHg), triglycerides (-12%), total cholesterol (-9.9%), and LDL cholesterol (-7.0%).²⁰

Adverse Events in Clinical Trials

Analysis of the safety of exenatide QW in 4,328 patients demonstrated no overall increase in risk compared to exenatide twice daily or other glucose-lowering therapies. The incidence of adverse events leading to withdrawal from exenatide QW therapy ranged from 2.4 to 6.9% .^{12–17}

The most frequent adverse events observed with exenatide QW were transient gastrointestinal (GI) events such as mild to moderate nausea. In two studies that compared exenatide QW and exenatide twice daily, the incidence of spontaneously reported nausea was 14.0 and 26.4% for exenatide QW versus 35.0 and 35.4% for exenatide twice daily.^{12,14} Most nausea occurred within the first 2 weeks of treatment; only 1.4% of patients discontinued the drug because of GI events (data on file, Amylin Pharmaceuticals, Inc.).

GI events associated with exenatide QW may be less frequent than with exenatide twice daily because the gradual increase in exenatide concentration approximates a dose titration.²²

Previous studies demonstrated that exenatide does not stimulate insulin secretion at normal glucose concentrations (Figure 3A),²³ suggesting that hypoglycemia might occur infrequently with this medication. In trials of exenatide QW, no events of major hypoglycemia (defined as requiring assistance because of severe impairment in behavior with blood glucose concentration < 54 mg/dl) were observed. Minor hypoglycemia rates were low and comparable to those of oral therapies in patients not treated

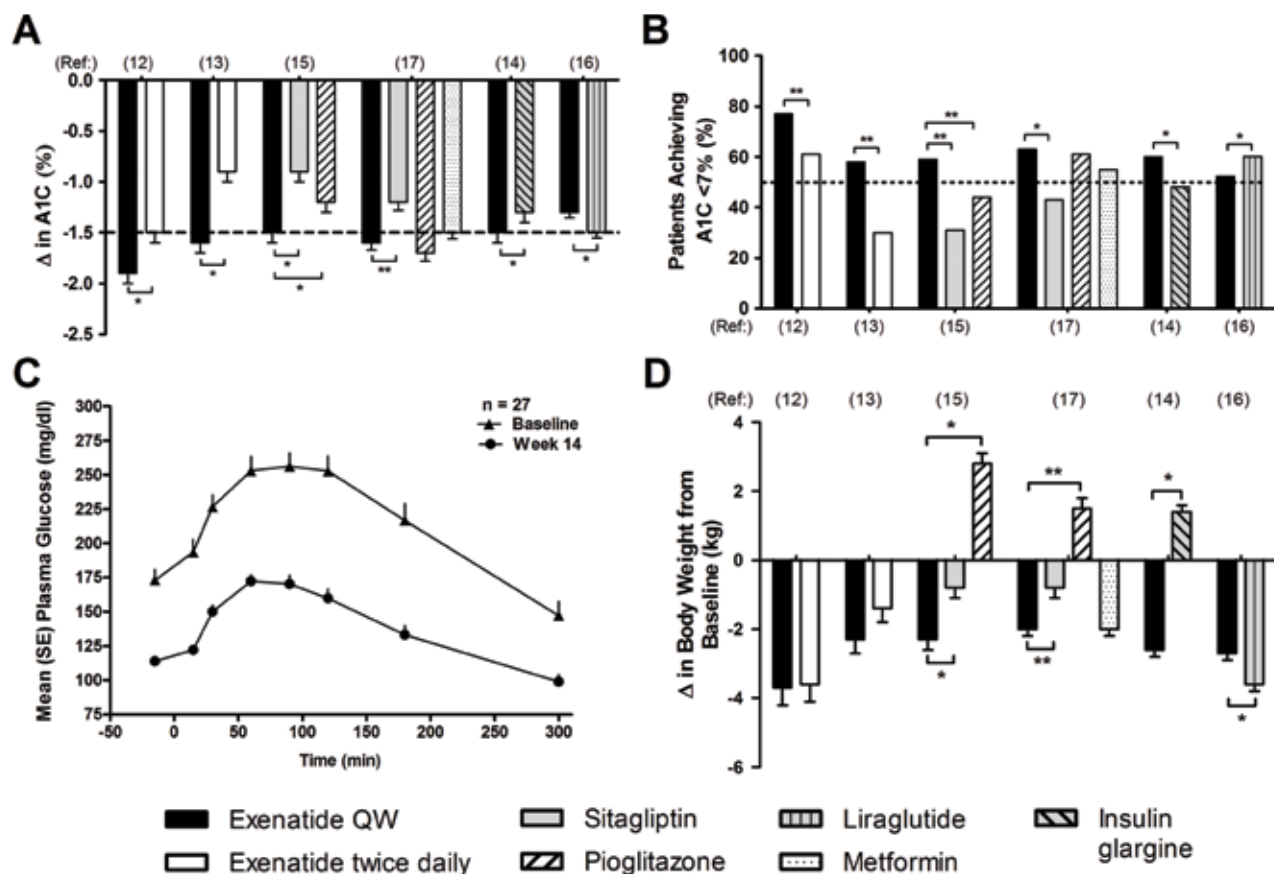


Figure 2. Change in A1C (A), percentage of patients achieving a target A1C of <7% (B), and body weight (D) in the clinical trials of exenatide QW.^{12–14,16–17,29} (C) The time course of postprandial plasma glucose concentrations in patients treated with exenatide QW (n = 27) at baseline (triangles) and after 14 weeks treatment (circles).¹² Data are mean ± SE. *P < 0.05; **P < 0.001. (C) reprinted with permission from The Lancet Publishing Group.

with a concomitant sulfonylurea (Figure 3B).

Injection-site reactions were observed more frequently with exenatide QW than with exenatide twice daily (7.1 vs. 2.6%) (data on file, Amylin Pharmaceuticals, Inc.). Common injection-site reactions included pruritus and indurations. Palpable bumps or nodules may be observed at injection sites for exenatide QW for ~ 1 month, although they are seldom categorized as adverse events in the clinical trials.⁹ They result from a foreign body reaction to the exenatide microspheres that subsides as the microspheres dissolve.⁹

Several adverse events of potential interest have been inves-

tigated for exenatide QW. Heart rate increased with exenatide QW therapy (by 1–4 bpm), but no increased cardiovascular risk has been observed (data on file, Amylin Pharmaceutical, Inc.).^{14,24} Exenatide QW is renally excreted, so it is contraindicated in patients with severe renal impairment. Post-marketing cases of pancreatitis were reported in patients treated with exenatide twice daily. Although no causal association has been demonstrated, exenatide QW is not indicated for use in patients with a current diagnosis or history of pancreatitis and should be discontinued in patients suspected of having pancreatitis. Extended exposure to exenatide was associated

with thyroid C-cell tumors in rats. It is not known whether these data pertain to humans, but exenatide QW is contraindicated for patients with a personal or family history of medullary thyroid carcinoma or multiple endocrine neoplasia syndrome type 2.²⁵ The Exenatide Study of Cardiovascular Event Lowering Trial, a randomized, double-blinded, placebo-controlled trial, will enroll 9,500 patients and study them prospectively for > 5 years to provide data on cardiovascular outcomes and mortality in patients treated with exenatide QW.

Practical Aspects of Therapy

The weekly dosing schedule of exenatide QW may be beneficial for many

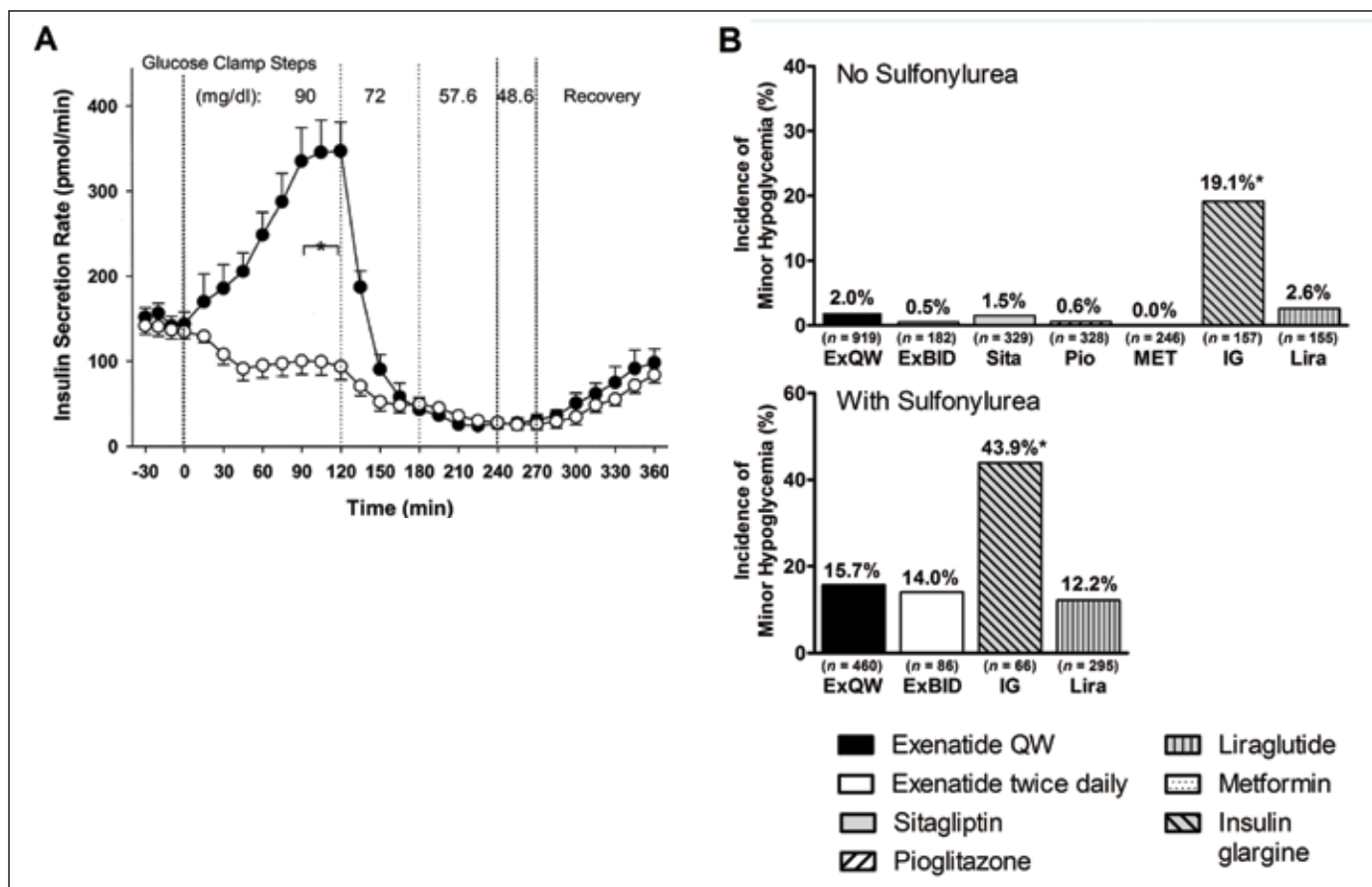


Figure 3. (A) Despite the continued presence of exenatide, insulin secretion decreased when glucose decreased to physiological concentrations. Filled circles, exenatide; open circles, placebo.²³ (B) Incidences of minor hypoglycemia in trials with (top) or without (bottom) concomitant sulfonylurea. (A) reprinted with permission from the American Diabetes Association.

patients. Exenatide QW administration does not need to be associated with a meal or a certain time of day, and dose adjustment is not necessary. Missed doses can be taken up to 4 days late. Although improvements in fasting glucose are observed within weeks of initiating exenatide QW, the A1C benefits develop over time (Figure 4). Significant improvements in diabetes treatment satisfaction and health- or weight-related quality of life were observed during exenatide QW treatment.^{26,27}

Exenatide QW is delivered using a single-dose tray that requires patients to combine the microsphere powder with diluent, shake, and inject. Instructions for administration were developed using adult

learning principles and were tested in 102 patients.²⁸ All patients but one had at least a high school degree, and the majority were injection-naïve. The results showed that the instructions effectively guided a simulated injection in 88% of patients, with 73% of patients requiring only written instructions and 15% also using call center support. Results were similar in the 30 patients > 60 years of age, with 87% of patients completing all of the fundamental steps. In a subset of 24 patients with hand-dexterity issues, the success rate was 72%, with 50% of patients following the instructions alone and 22% also using the call center.²⁸ The most common reason for failure was skipping written instruction pages or

steps, so patients should be encouraged to follow instructions carefully.

Conclusions

Exenatide QW is the first and only glucose-lowering therapy indicated for once-weekly administration in patients with type 2 diabetes. Exenatide QW, like all GLP-1 receptor agonists, has been recommended as second-line therapy after metformin for patients with inadequate glycemic control.^{6,7}

In clinical trials, exenatide QW reduced A1C, fasting glucose, body weight, systolic blood pressure, LDL cholesterol, and triglycerides for up to 3 years in patients continuing therapy. These patients were at low risk for hypoglycemia when not also using a sulfonylurea.

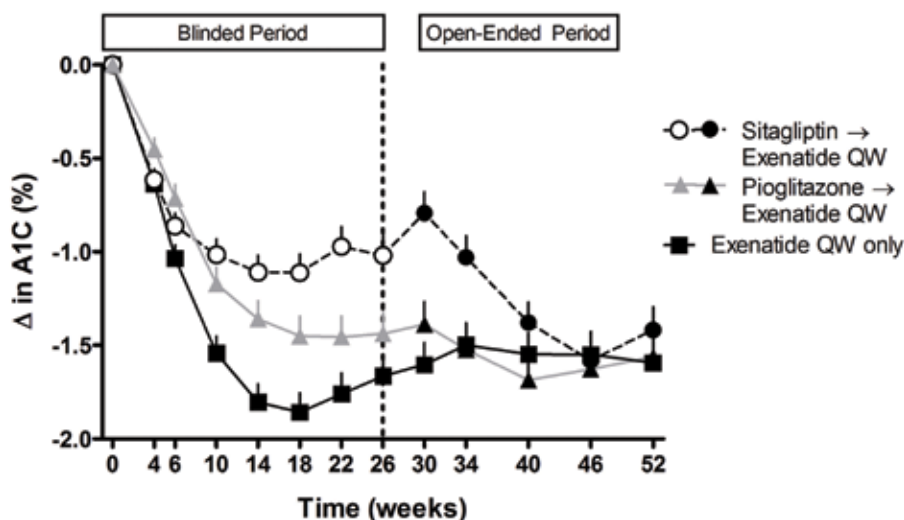


Figure 4. Change in glycaemic control in evaluable patients treated with exenatide QW (black squares) over 52 weeks or treated with sitagliptin (open → filled circles) or pioglitazone (open → filled triangles) over 26 weeks and then switched to exenatide QW.³⁰ Reprinted with permission from John Wiley and Sons.

Exenatide QW in combination with one or more oral glucose-lowering therapies produced significantly greater reductions in A1C and weight than sitagliptin, pioglitazone, or insulin glargine and greater reductions in A1C but not weight than exenatide twice daily.^{12–15} Exenatide QW in combination with one or more oral therapies demonstrated somewhat smaller reductions in A1C and weight than liraglutide.¹⁶ In treatment-naïve patients, exenatide QW reduced both A1C and weight significantly more than sitagliptin, reduced A1C and weight similarly to metformin, and resulted in less A1C reduction but more weight loss than pioglitazone.¹⁷

The overall tolerability of exenatide QW was comparable to that of the other GLP-1 receptor agonists, with better GI tolerability than exenatide twice daily and liraglutide once daily; few patients discontinued treatment because of GI events. It will be interesting to see how patients react to having the option of a once-weekly injectable therapy for glucose control.

ACKNOWLEDGMENTS

The authors thank Matthew Wintle, Jaret Malloy, Christine Schulteis, and James Ruggles for useful discussions during the development of this article.

REFERENCES

- Cramer J, Gold D, Silverman S, Lewiecki E: A systematic review of persistence and compliance with bisphosphonates for osteoporosis. *Osteoporos Int* 18:1023–1031, 2007
- Claxton A, de Klerk E, Parry M, Robinson JM, Schmidt ME: Patient compliance to a new enteric-coated weekly formulation of fluoxetine during continuation treatment of major depressive disorder. *J Clin Psychiatry* 61:928–932, 2000
- Polonsky WH, Fisher L, Hessler D, Bruhn D, Best JH: Patient perspectives on once-weekly medications for diabetes. *Diabetes Obes Metab* 13:144–149, 2011
- Drucker DJ: The biology of incretin hormones. *Cell Metab* 3:153–165, 2006
- Nauck MA: Glucagon-like peptide 1 (GLP-1) in the treatment of diabetes. *Horm Metab Res* 36:852–858, 2004
- American Diabetes Association: Standards of medical care in diabetes—2012. *Diabetes Care* 35 (Suppl. 1):S11–S63, 2012
- Handelsman Y, Mechanick JI, Blonde L, Grunberger G, Bloomgarden ZT, Bray GA, Dagogo-Jack S, Davidson JA, Einhorn D, Ganda O, Garber AJ, Hirsch IB, Horton ES, Ismail-Beigi F, Jellinger PS, Jones KL, Jovanovic L, Lebovitz H, Levy P, Moghissi ES, Orzech EA, Vinik AI, Wyne KL: American Association of Clinical Endocrinologists medical guidelines for

clinical practice for developing a diabetes mellitus comprehensive care plan. *Endocr Pract* 17 (Suppl. 2):1–53, 2011

⁸Fineman M, Flanagan S, Taylor K, Aisporna M, Shen LZ, Mace KF, Walsh B, Diamant M, Cirincione B, Kothare P, Li WI, MacConell L: Pharmacokinetics and pharmacodynamics of exenatide extended-release after single and multiple dosing. *Clin Pharmacokinet* 50:65–74, 2011

⁹DeYoung MB, MacConell L, Sarin V, Trautmann M, Herbert P: Encapsulation of exenatide in poly-(d,l-lactide-co-glycolide) microspheres produced an investigational long-acting once-weekly formulation for type 2 diabetes. *Diabetes Technol Ther* 13:1145–1154, 2011

¹⁰Amylin Pharmaceuticals: Bydureon prescribing information. San Diego, Calif., Amylin Pharmaceuticals, 2012. Available from www.bydureon.com/pi. Accessed 1 March 2012

¹¹Kim D, MacConell L, Zhuang D, Kothare PA, Trautmann M, Fineman M, Taylor K: Effects of once-weekly dosing of a long-acting release formulation of exenatide on glucose control and body weight in subjects with type 2 diabetes. *Diabetes Care* 30:1487–1493, 2007

¹²Drucker DJ, Buse JB, Taylor K, Kendall DM, Trautmann M, Zhuang D, Porter L: Exenatide once weekly versus twice daily for the treatment of type 2 diabetes: a randomised, open-label, non-inferiority study. *Lancet* 372:1240–1250, 2008

¹³Bergenstal RM, Wysham C, MacConell L, Malloy J, Walsh B, Yan P, Wilhelm K, Malone J, Porter LE: Efficacy and safety of exenatide once weekly versus sitagliptin or pioglitazone as an adjunct to metformin for treatment of type 2 diabetes (DURATION-2): a randomised trial. *Lancet* 376:431–439, 2010

¹⁴Blevins T, Pullman J, Malloy J, Yan P, Taylor K, Schulteis C, Trautmann M, Porter L: DURATION-5: exenatide once weekly resulted in greater improvements in glycaemic control compared with exenatide twice daily in patients with type 2 diabetes. *J Clin Endocrinol Metab* 96:1301–1310, 2011

¹⁵Diamant M, Van Gaal L, Stranks S, Northrup J, Cao D, Taylor K, Trautmann M: Once weekly exenatide compared with insulin glargine titrated to target in patients with type 2 diabetes (DURATION-3): an open-label randomised trial. *Lancet* 375:2234–2243, 2010

¹⁶Buse JB, Nauck M, Forst T, Sheu WH-H, Hoogwerf BJ, Shenouda SK, Heilmann CR, Boardman M, Fineman M, Porter L, Scherthaner G: Efficacy and safety of exenatide once weekly versus liraglutide in subjects with type 2 diabetes (DURATION-6): a randomized, open-label study [Abstract]. *Diabetologia* 54 (Suppl. 1):S38, 2011

¹⁷Russell-Jones D, Cuddihy RM, Hanefeld M, Kumar A, Gonzalez JG, Chan M, Wolka AM, Boardman MK: Efficacy and safety of exenatide once weekly versus metformin, pioglitazone, and sitagliptin used as monotherapy in drug-naïve patients with type 2 diabetes (DURATION-4): a 26-week

double-blind study. *Diabetes Care* 35:252–258, 2012

¹⁸Pencek R, Anderson P, Brunell SC, Blickensderfer A, Li Y: Clinical outcomes in patients with type 2 diabetes treated with exenatide twice daily or once weekly: retrospective analysis of pooled clinical data stratified by age and duration of diabetes [Abstract]. *Diabetes* 60 (Suppl. 1):A283, 2011

¹⁹Malone JK, Walsh B, Pencek R, Li Y, Bruhn D: Efficacy and safety of exenatide QW across background therapies: a pooled analysis of DURATION studies [Abstract]. *Diabetes* 60 (Suppl. 1):A293, 2011

²⁰MacConell L, Walsh B, Li Y, Pencek R, Maggs D: Exenatide once weekly: sustained improvement in glycemic control and weight loss through 3 years [Abstract]. *Diabetes* 60 (Suppl. 1):A265, 2011

²¹Bergenstal RM, Kim T, Trautmann M, Zhuang D, Okerson T, Taylor K: Exenatide once weekly elicited improvements in blood pressure and lipid profile over 52 weeks in patients with type 2 diabetes [Abstract]. *Circulation* 118 (Suppl. 18):S1086, 2008

²²Fineman MS, Shen LZ, Taylor K, Kim DD, Baron AD: Effectiveness of progressive dose-escalation of exenatide (exendin-4) in reducing dose-limiting side effects in subjects with type 2 diabetes. *Diabetes Metab Res Rev* 20:411–417, 2004

²³Degn KB, Brock B, Juhl CB, Djurhuus CB, Grubert J, Kim D, Han J, Taylor K, Fineman M, Schmitz O: Effect of intravenous infusion of exenatide (synthetic exendin-4)

on glucose-dependent insulin secretion and counterregulation during hypoglycemia. *Diabetes* 53:2397–2403, 2004

²⁴Diamant M, Van Gaal L, Stranks S, Guerci B, Macconell L, Haber H, Scism-Bacon J, Trautmann M: Safety and efficacy of once-weekly exenatide compared with insulin glargine titrated to target in patients with type 2 diabetes over 84 weeks. *Diabetes Care* 35:683–689, 2012

²⁵Aroda VR, DeYoung MB: Clinical implications of exenatide as a twice-daily or once-weekly therapy for type 2 diabetes. *Postgrad Med* 123:228–238, 2011

²⁶Best JH, Boye KS, Rubin RR, Cao D, Kim TH, Peyrot M: Improved treatment satisfaction and weight-related quality of life with exenatide once weekly or twice daily. *Diabet Med* 26:722–728, 2009

²⁷Best JH, Rubin RR, Peyrot M, Li Y, Yan P, Malloy J, Garrison LP: Weight-related quality of life, health utility, psychological well-being, and satisfaction with exenatide once weekly compared with sitagliptin or pioglitazone after 26 weeks of treatment. *Diabetes Care* 34:314–319, 2011

²⁸Lorenzi G, Schreiner B, Ooster J, Boardman M: Application of adult-learning principles to patient instructions: a usability study for an exenatide once-weekly injection device. *Clinical Diabetes* 28:157–162, 2010

²⁹Diamant M, Van Gaal L, Stranks S, Guerci B, MacConell L, Trautmann M: DURATION-3: Efficacy of exenatide once weekly (EQW) and insulin glargine QD (IG)

after 84 weeks in patients with type 2 diabetes (T2D) [Abstract]. *Diabetes* 60 (Suppl. 1):A76, 2011

³⁰Wysham C, Bergenstal R, Malloy J, Yan P, Walsh B, Malone J, Taylor K: DURATION-2: efficacy and safety of switching from maximum daily sitagliptin or pioglitazone to once-weekly exenatide. *Diabet Med* 28:705–714, 2011

Susan LaRue, RD, CDE, is a principal scientist for Advocacy and Education; Mary Beth DeYoung, PhD, is the associate director of Medical Disclosures; Amy Blickensderfer, PharmD, is director of Medical Relations and Information; and Steve Chen, MD, is director of Medical Development at Amylin Pharmaceuticals, Inc., in San Diego, Calif.

Note of disclosure: *The authors are employees and stockholders of Amylin Pharmaceuticals, Inc., the manufacturer of exenatide QW.*