



NEW ZEALAND

ECONOMIC COMPLEXITY INDEX [2010] > **0.261 (50)**

COMPLEXITY OUTLOOK INDEX [2010] > **0.713 (41)**

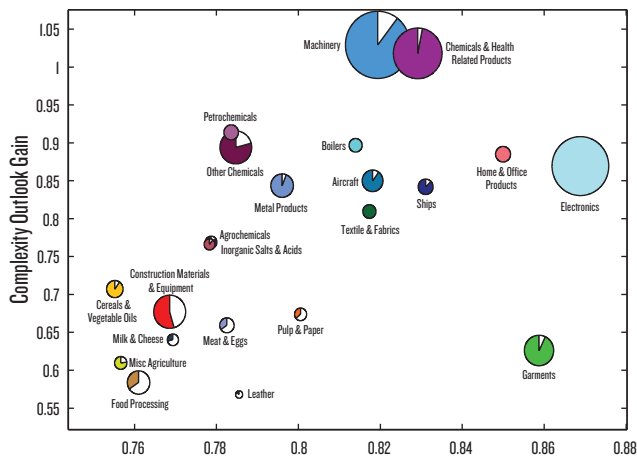
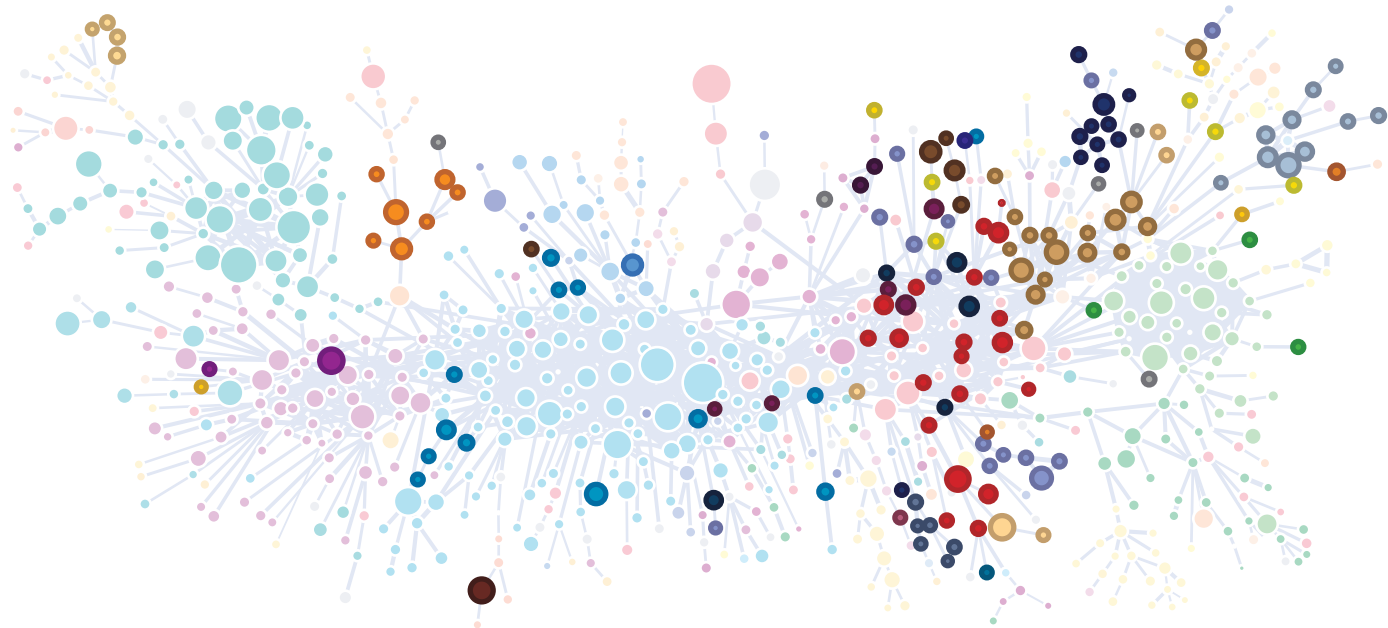
EXPECTED GDP_{PC} GROWTH* > **0.7% (100)**

*Expected annual average for the 2010-2020 period.

2010 PRODUCT SPACE

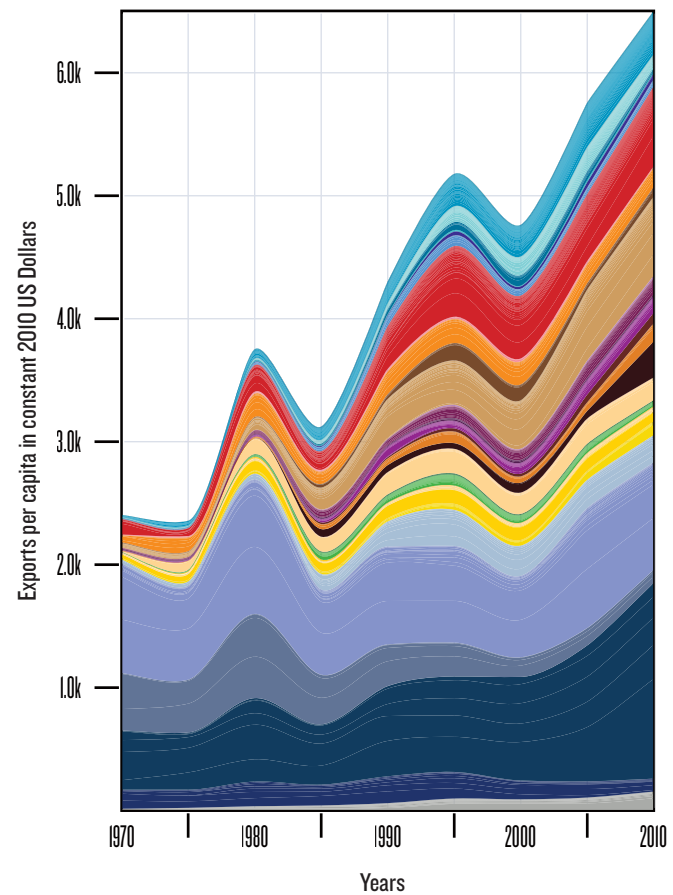
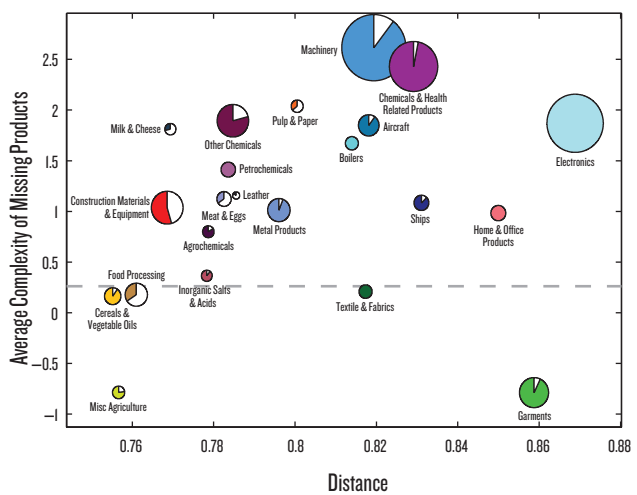
- PRODUCTS EXPORTED WITH RCA > 1
- PRODUCTS NOT EXPORTED WITH RCA > 1

NODE SIZE IS PROPORTIONAL TO WORLD TRADE



2010 EXPORT OPPORTUNITY SPECTRUM

- FRACTION OF PRODUCTS WITH RCA > 1
- 22% OF WORLD TRADE (WT)
- 6% OF WT
- 2% OF WT
- 0.8% OF WT
- 0.06% OF WT



2010 EVOLUTION OF EXPORT COMPOSITION

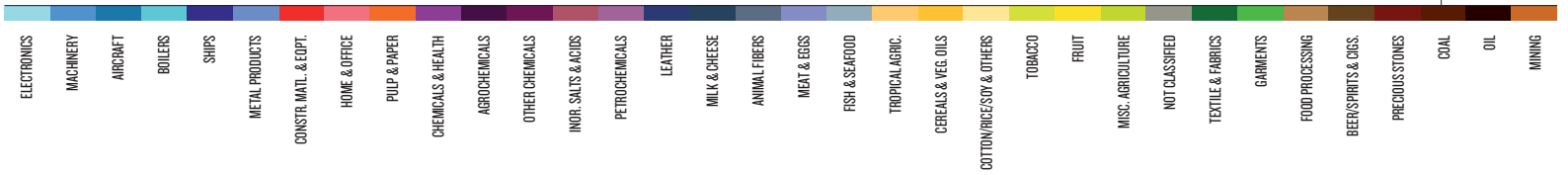


POPULATION - 4.4 M / (104)
TOTAL EXPORTS - USD 28 B / (58)

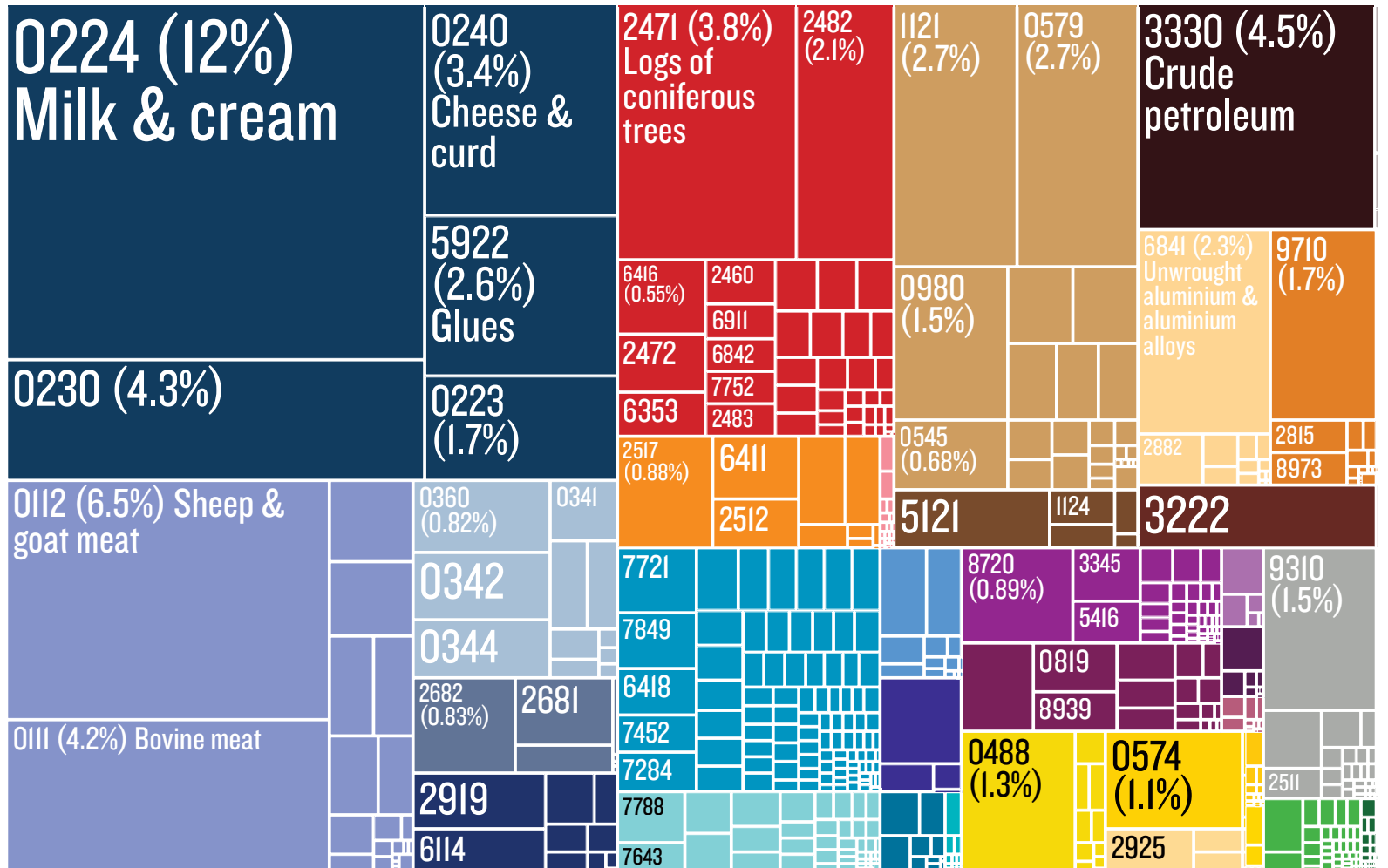
GDP - USD 143 B / (52)
GDPpc - USD 32,620 / (22)

EXPORTS PER CAPITA - USD 6,502 / (31)
EXPORTS AS SHARE OF GDP - 20% (79)

* Data are from 2010. Numbers indicate:
Value (World Ranking among 129 countries)
Region: East Asia and Pacific.

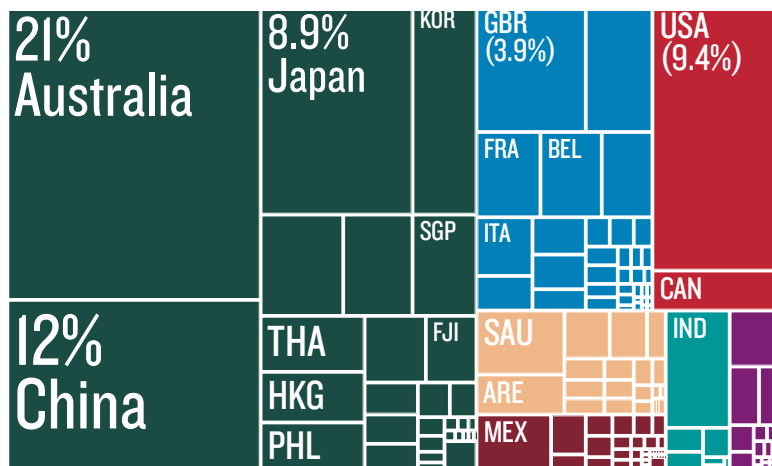


2010 EXPORT TREEMAP TOTAL: \$ 28,397,440,120



* Numbers indicate SITC-4 Rev 2 codes which can be found in the Appendix. Percentages next to the product codes indicate proportion of the product in the exports of the country. Treemap headers show the total trade of the country.

2010 EXPORT DESTINATIONS TOTAL: \$ 28,397,440,120



2010 IMPORT SOURCES TOTAL: \$ 26,259,720,479

