


**A Basin Analysis Case Study:
The Morrison Formation
Grants Uranium Region
New Mexico**

**Edited by
Christine E. Turner-Peterson
Elmer S. Santos
Neil S. Fishman**

AAPG Studies in Geology #22



**A Basin Analysis Case Study:
The Morrison Formation
Grants Uranium Region
New Mexico**

AAPG Studies in Geology #22






**A Basin Analysis Case Study:
The Morrison Formation
Grants Uranium Region
New Mexico**

Edited by

**Christine E. Turner-Peterson
Elmer S. Santos
Neil S. Fishman**



Published by
Energy Minerals Division
of
The American Association of Petroleum Geologists
Tulsa, Oklahoma 74101, U.S.A.

Copyright © 1986
The American Association of Petroleum Geologists, Energy Minerals Division
All Rights Reserved
Published May, 1986

Library of Congress Cataloging-in-Publication Data

A Basin analysis case study.

(AAPG studies in geology ; 22)

Bibliography: p.

Includes index.

1. Morrison Formation. 2. Geology, Stratigraphic--Jurassic. 3. Geology--New Mexico--Grants Region. 4. Uranium ores--New Mexico--Grants Region.

I. Turner-Peterson, Christine E. II. Santos, Elmer S. III. Fishman, Neil S.

IV. Series: AAPG studies in geology ; no. 22.

QE684.B37 1986

553.4'932'09789

86-14007

ISBN: 0-89181-028-5

Permissions Editor, AAPG, P.O. Box 979,
Tulsa, Oklahoma 74101-0979

The Energy Minerals Division gratefully acknowledges the financial assistance of the AAPG Foundation.

AAPG grants permission for a single photocopy of any article herein for research or non-commercial education purposes. Other photocopying not covered by the copyright law as Fair Use is prohibited. For permission to photocopy more than one copy of any article, or parts thereof, contact:

Association editor: James Helwig

Science Director: Ronald L. Hart

Project Editors: Victor V. Van Beuren and Anne H. Thomas

Design : S. Wally Powell

Typographers: Eula Matheny, Elaine DiLoreto and Phyllis Kenney

Cover photo: Eolian facies of the Recapture Member of the Morrison Formation exposed at Navajo Church. Large-scale crossbeds are in excess of 25 m thick.

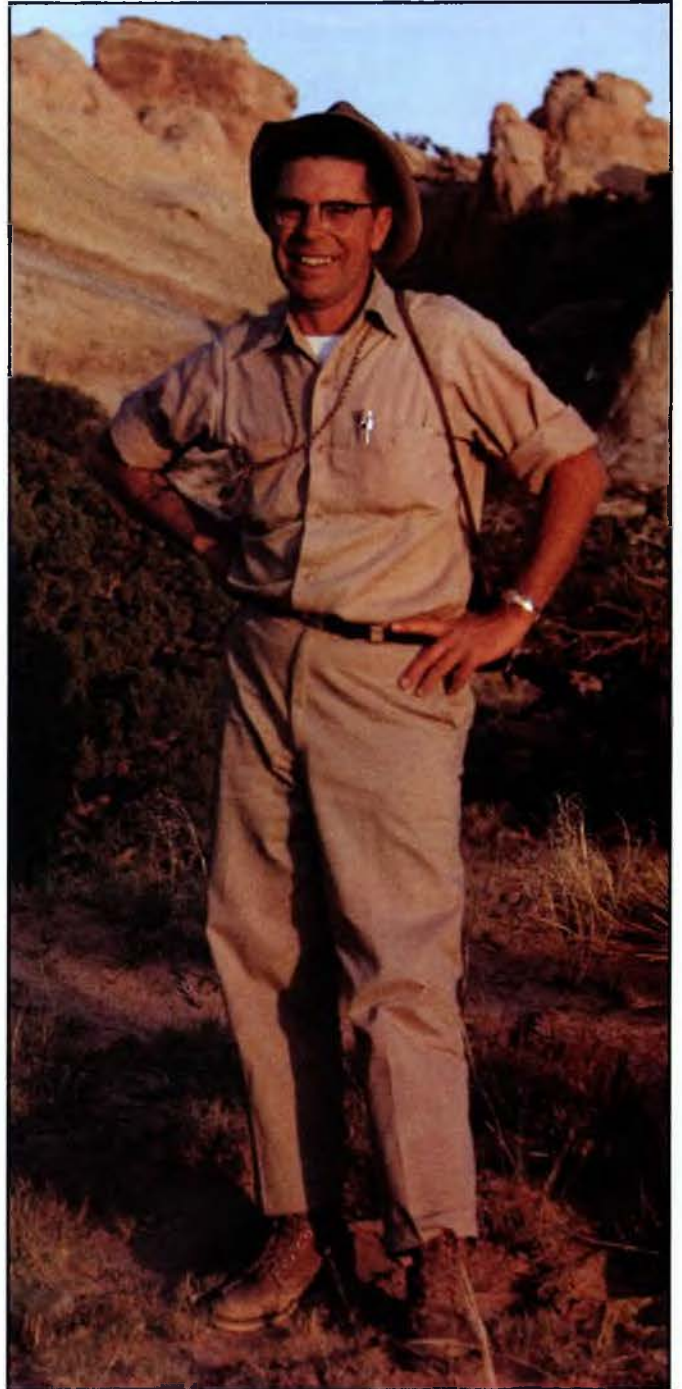
◆—Dedication—◆

Lawrence C. Craig 1918-1983

Larry Craig's 40-year career with the U.S. Geological Survey spanned two uranium booms. In the first one, during the search for uranium needed for national defense in the late 1940s and 1950s, Larry led a group who worked to unravel the complex Jurassic stratigraphy of the Colorado Plateau. They gradually built a geologic picture of the Morrison Formation, and in 1955, Larry and his colleagues published their study, "Stratigraphy of the Morrison and related formations, Colorado Plateau region—a preliminary report," which remains one of the most quoted references on the Morrison Formation. That paper laid out a sedimentologic framework that numerous later plateau geologists have embellished but not changed greatly. More important in an economic sense, it provided the basic picture to guide uranium exploration that found over half of the uranium ore known in the United States. In the second uranium boom of the 1970s, Larry was called upon to lead the Survey's major part in the National Uranium Resource Evaluation program. As a senior scientist happy in his research, he might easily have demurred, but he simply was not one who would turn away from a commitment and a national need. It was largely through his personal dedication and leadership that the Survey accomplished the job while adhering both to tight schedules and high professional standards.

As new geologic concepts and information on the rocks of the Colorado Plateau came to light, Larry relished the gradual evolution of his earlier stratigraphic framework and sedimentologic interpretations. He was especially good at bringing along young colleagues and nurturing their budding scientific careers. They would go to him with their observations and ideas, not always in agreement with Larry's work, and he would invariably say something like, "Well, you know, I described and interpreted what we knew then. But I remember some facies relationships not far from that area that always puzzled me, and you might have the answer we need." In Larry's book there was no room for professional territorialism, only for information that might help solve geologic problems. He was a respected colleague, a leader in the geology of the Colorado Plateau, and an immensely hard worker who always could be relied upon to get important things done. His low-keyed and quiet approach to life made him a delight to know, and his scientific honesty, sincerity, and dedication are an inspiration to those who knew him. The present volume is a collection of papers by many people who worked with Larry Craig and who benefited from his guidance, experience, and friendship. It is to Larry, whom we all affectionately called "Mr. Morrison," that this volume is sincerely and appropriately dedicated.

Terry W. Offield



◆— Table of Contents —◆

1	Overview and Summary <i>Christine E. Turner-Peterson and Elmer S. Santos</i>
7	Stratigraphy of Middle and Upper Jurassic Rocks of the San Juan Basin: Historical Perspective, Current Ideas, and Remaining Problems <i>Steven M. Condon and Fred Peterson</i>
27	Tectonic Setting of the San Juan Basin in the Jurassic <i>Elmer S. Santos and Christine E. Turner-Peterson</i>
35	Structure Contour Map of the San Juan Basin and Vicinity <i>Robert E. Thaden and Robert S. Zech</i>
47	Fluvial Sedimentology of a Major Uranium-Bearing Sandstone—A Study of the Westwater Canyon Member of the Morrison Formation, San Juan Basin, New Mexico <i>Christine E. Turner-Peterson</i>
77	Deposition and Diagenesis in the Brushy Basin Member and Upper Part of the Westwater Canyon Member of the Morrison Formation, San Juan Basin, New Mexico <i>Thomas E. Bell</i>
93	The Nature of the Dakota-Morrison Boundary, Southeastern San Juan Basin <i>William M. Aubrey</i>
105	Structural Control of Sedimentation Patterns and the Distribution of Uranium Deposits in the Westwater Canyon Member of the Morrison Formation, Northwestern New Mexico—A Subsurface Study <i>Allan R. Kirk and Steven M. Condon</i>
145	Seismic Studies in the Church Rock Uranium District, Southwest San Juan Basin, New Mexico <i>William T. Phelps, Robert S. Zech and A. Curtis Huffman</i>
161	Some Aspects of the Genesis of the Uranium Deposits of the Morrison Formation in the Grants Uranium Region, New Mexico, Inferred from Chemical Characteristics of the Deposits <i>Charles S. Spirakis and Charles T. Pierson</i>
171	Organic Geochemical Studies of Uranium-Associated Organic Matter from the San Juan Basin: A New Approach Using Solid-State ¹³C Nuclear Magnetic Resonance <i>Patrick G. Hatcher, Elliott C. Spiker, William H. Orem, Lisa A. Romankiw, Nikolaus M. Szeverenyi and Gary E. Maciel</i>

-
- 185 **Geology and Ore Deposits of the Section 23 Mine, Ambrosia Lake District, New Mexico**
Harry C. Granger and Elmer S. Santos
-
- 211 **Origin of the Mariano Lake Uranium Deposit, McKinley County, New Mexico**
Neil S. Fishman and Richard L. Reynolds
-
- 227 **Design and Results of the Mariano Lake-Lake Valley Drilling Project, Northwestern New Mexico**
Allan R. Kirk, A. Curtis Huffman and Robert S. Zech
-
- 241 **Analysis of Geophysical Well Logs from the
Mariano Lake-Lake Valley Drilling Project, San Juan Basin, Northwestern New Mexico**
James H. Scott
-
- 257 **Relationship of Detrital, Nonopaque Heavy Minerals to Diagenesis and
Provenance of the Morrison Formation, Southwestern San Juan Basin, New Mexico**
Paula L. Hansley
-
- 277 **Regional Diagenetic Trends and Uranium
Mineralization in the Morrison Formation Across the Grants Uranium Region**
Paula L. Hansley
-
- 303 **Iron-Titanium Oxide Minerals and Magnetic Susceptibility
Anomalies in the Mariano Lake-Lake Valley Cores—Constraints on Conditions
of Uranium Mineralization in the Morrison Formation, San Juan Basin, New Mexico**
Richard L. Reynolds, Neil S. Fishman, James H. Scott and Mark R. Hudson
-
- 315 **Petrology of Clay Minerals in the Subsurface Morrison Formation
Near Crownpoint, Southern San Juan Basin, New Mexico: An Interim Report**
C. Gene Whitney
-
- 331 **Estimation of Uranium Endowment in the Westwater Canyon Member,
Morrison Formation, San Juan Basin, Using a Data-Directed Numerical Method**
Richard E. McCammon, Warren I. Finch, John O. Kork and Nancy J. Bridges
-
- 357 **Geologic Synthesis and Genetic Models for Uranium
Mineralization in the Morrison Formation, Grants Uranium Region, New Mexico**
Christine E. Turner-Peterson and Neil S. Fishman
-

