

# Deficiency of the Stress Kinase p38 $\alpha$ Results in Embryonic Lethality: Characterization of the Kinase Dependence of Stress Responses of Enzyme-deficient Embryonic Stem Cells

By Melanie Allen,<sup>‡</sup> Linne Svensson,\* Marsha Roach,<sup>‡</sup> John Hambor,<sup>‡</sup> John McNeish,<sup>‡</sup> and Christopher A. Gabel\*

From the \*Department of Respiratory, Allergy, Immunology, Inflammation, and Infectious Diseases and the <sup>‡</sup>Department of Genetic Technologies, Pfizer Central Research, Groton, Connecticut 06340

## Abstract

The mitogen-activated protein (MAP) kinase p38 is a key component of stress response pathways and the target of cytokine-suppressing antiinflammatory drugs (CSAIDs). A genetic approach was employed to inactivate the gene encoding one p38 isoform, p38 $\alpha$ . Mice null for the p38 $\alpha$  allele die during embryonic development. p38 $\alpha$ <sup>+/-</sup> embryonic stem (ES) cells grown in the presence of high neomycin concentrations demonstrated conversion of the wild-type allele to a targeted allele. p38 $\alpha$ <sup>-/-</sup> ES cells lacked p38 $\alpha$  protein and failed to activate MAP kinase-activated protein (MAPKAP) kinase 2 in response to chemical stress inducers. In contrast, p38 $\alpha$ <sup>+/+</sup> ES cells and primary embryonic fibroblasts responded to stress stimuli and phosphorylated p38 $\alpha$ , and activated MAPKAP kinase 2. After in vitro differentiation, both wild-type and p38 $\alpha$ <sup>-/-</sup> ES cells yielded cells that expressed the interleukin 1 receptor (IL-1R). p38 $\alpha$ <sup>+/+</sup> but not p38 $\alpha$ <sup>-/-</sup> IL-1R-positive cells responded to IL-1 activation to produce IL-6. Comparison of chemical-induced apoptosis processes revealed no significant difference between the p38 $\alpha$ <sup>+/+</sup> and p38 $\alpha$ <sup>-/-</sup> ES cells. Therefore, these studies demonstrate that p38 $\alpha$  is a major upstream activator of MAPKAP kinase 2 and a key component of the IL-1 signaling pathway. However, p38 $\alpha$  does not serve an indispensable role in apoptosis.

Key words: inflammation • cytokines • mitogen-activated protein kinase • signaling • cytokine-suppressing antiinflammatory drug

## Introduction

After binding of the inflammatory cytokines IL-1 and TNF- $\alpha$  to their specific receptors on target cells, complex kinase-mediated signaling cascades are initiated that lead to specific changes in transcriptional and translational activities (1, 2). Many of these same signaling pathways can be engaged by chemical stress stimuli such as sodium arsenite or anisomycin (3, 4), by UV irradiation, (5), and by LPS (6). Several members of the family of mitogen-activated protein (MAP)<sup>1</sup>

kinases are components of the stress response, including p38 and c-Jun NH<sub>2</sub>-terminal protein kinases (7, 8). These MAP kinases regulate activity of key transcription factors including ATF2, Elk, CHOP, MEF2C, and CREB (7, 9–12); this regulation is achieved, in part, by control of downstream kinases such as MAP kinase-activating protein (MAPKAP) kinase 2 and 3 and p38-regulated/activated protein kinase (PRAK; 13–15). Stress-activated MAP kinases, therefore, serve as key coordinators and/or regulators of a cell's stress responsiveness.

p38 MAP kinase was first identified as an LPS-inducible activity in murine peritoneal macrophages (6). Like other members of the MAP kinase superfamily, p38 phosphorylates its substrates on serine/threonine residues, and itself requires dual phosphorylation on both a threonine and tyrosine residue for activity (16). Several upstream MAP kinase kinases (MKKs) have been reported to phosphorylate p38 in vitro, including MKK3, MKK4, and MKK6 (17, 18). Four human p38 isoforms have been identified ( $\alpha$ ,  $\beta$ ,  $\gamma$ , and  $\delta$ ), each containing the conserved dual phosphoryla-

Address correspondence to Christopher A. Gabel, Department of Respiratory, Allergy, Immunology, Inflammation, and Infectious Diseases, Central Research, Pfizer, Inc., Groton, CT 06340. Phone: 860-441-5483; Fax: 860-715-2467; E-mail: christopher\_a\_gabel@groton.pfizer.com

<sup>1</sup>Abbreviations used in this paper: CSAID, cytokine-suppressing antiinflammatory drug; ES, embryonic stem; IC<sub>50</sub>, half-maximal inhibitory concentration; MAP, mitogen-activated protein; MAPKAP, MAP kinase-activated protein; MKK, MAP kinase kinase; NF, nuclear factor; PARP, poly(ADP) ribose polymerase; PEF, primary embryonic fibroblast; RT, reverse transcription; SCML, recombinant murine leukemia inhibitory factor.

tion sequence threonine-glycine-tyrosine (19–25). The different isoforms display distinct expression patterns (23, 26), and data suggesting isoform-specific activities have been reported (27). However, the precise biochemical function that each isoform serves *in vivo* remains unclear.

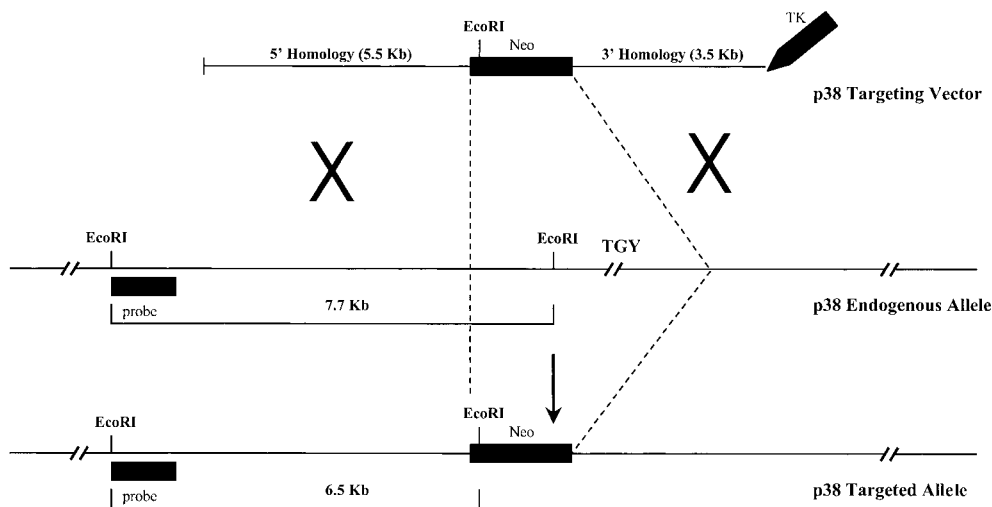
Studies aimed at identification of the function of p38 were aided by realization that a novel class of cytokine-suppressing antiinflammatory drugs (CSAIDs) achieved their activity in part via inhibition of this kinase (19). Both the  $\alpha$  and  $\beta$  forms of p38 are reported to be CSAID sensitive (19–21); in contrast, p38 $\gamma$  and p38 $\delta$  appear to be insensitive to these agents (23–25). Moreover, a panel of 12 other kinases was shown to be insensitive to CSAID inhibition (28), indicating that these agents are selective kinase inhibitors; structural and site-directed mutagenesis studies have recently provided a basis for this selectivity (29–32). Mechanism of action studies have demonstrated that CSAIDs prevent IL-1 $\beta$  and TNF- $\alpha$  production by LPS-stimulated monocytes and/or macrophages by affecting a posttranscriptional process (33, 34). In addition, CSAIDs have been shown to inhibit synthesis of a wide variety of IL-1- or TNF-inducible polypeptides, including IL-6 by fibroblasts (35), cyclooxygenase-2 by monocytes (36), and IFN- $\gamma$  by T cells (37). In these systems, the CSAID effect is manifested, in part, as inhibition of target-gene transcription. Moreover, CSAIDs can suppress nuclear factor (NF)- $\kappa$ B-dependent transcriptional events (38). These agents do not inhibit NF- $\kappa$ B activation *per se*, but may block activation of accessory factors necessary for NF- $\kappa$ B-dependent transcription. Finally, CSAIDs are reported to alter apoptosis, in some cases promoting (39) and in others inhibiting (40), and to impair posttranslational processing of IL-1 $\beta$  (41). Whether all reported CSAID effects are attributable to p38 inhibition, and to what extent the various p38 isoforms participate in separate biological processes, are important issues that remain to be clarified. Recent studies demonstrating that CSAIDs can also block cyclooxygenase activity (42) and increase Raf-1 activity (43) highlight the potential for CSAID-mediated cellular effects occurring independently of p38.

To better understand the biological function of p38 $\alpha$ , a genetic approach was used to inactivate the gene encoding this kinase by homologous recombination in embryonic stem (ES) cells. Inbred DBA/1 lacJ mice that are p38 $\alpha$  null die during early embryonic development. However, growth of p38 $\alpha$ <sup>+/-</sup> ES cells in the presence of increased concentrations of neomycin led to isolation of a p38 $\alpha$ <sup>-/-</sup> ES cell line. These enzyme-deficient cells were used to investigate the role of p38 $\alpha$  in stress activation pathways. Results derived from this analysis confirm that p38 $\alpha$  is a major upstream activator of MAPKAP kinase 2 and an important component of the IL-1 signaling pathway. On the other hand, the results provide no indication that p38 $\alpha$  is a necessary component of the chemical-induced apoptotic response mechanism of ES cells. Therefore, these studies help to clarify the role of p38 $\alpha$  in stress response pathways.

## Materials and Methods

**Construction of the p38 $\alpha$  Targeting Vector.** A 759-bp murine p38 $\alpha$  partial genomic PCR fragment was used as a probe to identify genomic clones from a DBA/1 lacJ genomic phage library (Stratagene). The p38 $\alpha$  targeting vector (Fig. 1) was constructed by cloning 5.5 kb of 5' homology and 3.5 kb of 3' homology into a pJNS2 (PGK-NEO/PGK-Tk) backbone vector. The targeting vector replaced ~8–10 kb of genomic locus, containing the TGY dual phosphorylation site required for kinase activation, with PGK-NEO.

**Generation of p38 $\alpha$ -deficient ES Cells.** DBA/252 ES cells (44, 45) were cultured on primary embryonic fibroblasts (PEFs) in DMEM containing high glucose, 15% heat-inactivated fetal bovine serum, 0.2 mM l-glutamine, 0.1 mM 2-ME, 0.1 mM MEM nonessential amino acids, penicillin-streptomycin, and 400 U/ml recombinant murine leukemia inhibitory factor (SCML). The p38 $\alpha$  targeting vector (25  $\mu$ g) was electroporated at  $1.0 \times 10^8$  ES cells/ml (0.4 ml total volume), and the electroporation was achieved with a BTX Electrocell Manipulator 600 (200 V, 50  $\mu$ F, 360  $\Omega$ ). Cells were subsequently subjected to positive/negative selection with 200  $\mu$ g/ml G418 (geneticin; Life Technologies) and 2  $\mu$ M gancyclovir (Syntex Laboratories) as described (46). Gene targeting by homologous recombination was determined by



**Figure 1.** Scheme employed to achieve homologous recombination of the murine p38 $\alpha$  locus. Approximately 8–10 kb of endogenous genomic sequence, including regions necessary for p38 $\alpha$  enzymatic activity, was replaced by the neomycin gene; this creates a deletion from phenylalanine 129 to aspartic acid 283 within the native protein. Hybridization of ES cell DNA with an external probe identified a predicted RFLP of 6.5 kb, created as a result of the introduction of a novel EcoRI restriction site in the targeting vector.

Southern analysis using a 5' 361-bp external PCR probe in conjunction with EcoRI-digested ES cell DNA. As depicted in Fig. 1, the endogenous wild-type allele yielded a band hybridizing at 7.7 kb, whereas the targeted allele revealed a predicted RFLP at 6.5 kb due to the introduction of a novel EcoRI site from the p38 $\alpha$  targeting vector. The parental heterozygous p38 $\alpha$  ES cell line was subsequently cultured *in vitro* in SCML supplemented with 2 mg/ml G418, according to published methods, to generate p38 $\alpha$ <sup>-/-</sup> cells (47).

**Differentiation of ES Cells.** Cultures of wild-type and p38 $\alpha$ <sup>-/-</sup> ES cells were maintained in the absence of SCML for 16 d to promote formation of embryoid bodies. These structures were dissociated by trypsin digestion to generate single cell suspensions, and the cells were seeded into IMDM containing  $4.5 \times 10^{-4}$  M monothiolglycerol, 15% fetal bovine serum, 2 mM glutamine, 1% methylcellulose, 0.1 ng/ml IL-3, 10 ng/ml IL-6, and 3 ng/ml GM-CSF to promote differentiation to a myeloid-like phenotype. Recombinant murine IL-3, IL-6, and GM-CSF were obtained from Life Technologies. The cultures were maintained for 12 d, then were harvested and stained with PE-labeled anti-murine type 1 IL-1R antibody (PharMingen) or with a control PE-labeled IgG (Caltag). The antibody-stained cells were analyzed by FACS<sup>®</sup>, and IL-1R-positive cells were collected.

**Generation of PEFs.** PEFs were isolated from day 12 DBA/1 lacI embryos by established methods (48). In contrast, p38 $\alpha$ <sup>-/-</sup> embryos were not viable at 12 d postcoitum. Therefore, to derive p38 $\alpha$ <sup>-/-</sup> PEF cell lines, attempts were made to rescue the early embryonic lethality in chimeric embryos. p38 $\alpha$ <sup>-/-</sup> ES cells were microinjected into day 2.5 C57BL/6 blastocysts, and embryos were recovered at 12 d after transfer to pseudopregnant females. To isolate the p38 $\alpha$ <sup>-/-</sup> PEFs from the pooled chimeric cell population, the primary cell cultures were maintained in the presence of 200  $\mu$ g/ml G418. The G418 selection killed all C57BL/6 wild-type cells, and the p38 $\alpha$ <sup>-/-</sup> cells survived selection because of the insertion of the neomycin resistance gene in the original targeting vector. However, attempts to expand this p38 $\alpha$ <sup>-/-</sup> PEF population failed within 24 h of passage of original selected cultures.

**Reverse Transcription PCR Analysis of p38 Kinase Expression.** Reverse transcription (RT)-PCR was performed on 1  $\mu$ g of total ES cell or liver RNA in a 20- $\mu$ l reaction mixture containing 1 $\times$  PCR buffer (Life Technologies) supplemented with 500  $\mu$ M each dNTP, 2.5 mM MgCl<sub>2</sub>, 0.01 M DTT, and 200 U SuperScript II reverse transcriptase (Life Technologies). The RT reaction was carried out for 1 h at 42°C, followed by denaturation at 70°C for 15 min. Aliquots (2  $\mu$ l) of each RT reaction mixture were then amplified in a 50- $\mu$ l reaction volume containing 1 $\times$  PCR buffer, 1.4 mM MgCl<sub>2</sub>, 200  $\mu$ M each dNTP, 0.4  $\mu$ M each primer, and 1 U Taq polymerase (Boehringer Mannheim). PCR cycling conditions were 30 cycles at 94°C for 30 s, 55°C for 30 s, and 72°C for 1 min. In addition to using liver as a positive tissue control for p38 isoform expression, amplification of the housekeeping gene  $\beta$ -actin was carried out as a positive control for the RT reaction. RT-PCR was also performed on all RNA samples in the absence of the reverse transcriptase to eliminate the possibility that contaminating DNA contributed to the PCR amplification; no transcripts corresponding to the p38 species were detected (data not shown). Primers employed in the RT-PCR analysis consisted of the following: p38 $\alpha$ , 5'-GATTCTGGATTTTGGGCTGGCTCG-3' and 5'-ATCTTCTCCAGTAGGTCGACAGCC-3'; p38 $\beta$ , 5'-ATCATCGAGGATTTTCAGCG-3' and 5'-CCTCCATGATTCGCTTCAGC-3'; p38 $\delta$ , 5'-ATTACGCGAGGATAAGGTCC-3' and 5'-AGTCACTTTTCAGGATCTGGG-3'; p38 $\gamma$ , 5'-ACTTCACAGACTTCTACCTGG-3' and 5'-CAAAGTATGGATGGG-

TTAACG-3';  $\beta$ -actin, 5'-GTGGGCCGCTCTAGGCACCAA-3' and 5'-CTCTTTGATGTCACGCACGATTTTC-3'. To ensure that no other murine genes would cross-hybridize to these specific primer nucleotide sequences, they were prescreened against the BLASTN sequence similarity database (available at newblast@ncbi.nlm.nih.gov). PCR products were size separated by electrophoresis on a 2% agarose gel, and were visualized by ethidium bromide staining.

**IL-6 ELISA.** Wild-type and p38 $\alpha$ <sup>-/-</sup> ES cells and PEFs were cultured overnight in 1 ml SCML containing no effector, human TNF- $\alpha$  (10–20 ng/ml), or human IL-1 $\beta$  (10–20 ng/ml); the recombinant cytokines were obtained from Upstate Biotechnology. Where indicated, the CSAID SB-203,580 (Calbiochem) was added to the culture medium. Media were harvested, clarified by centrifugation, and analyzed in an IL-6 ELISA (Endogen). The assay was performed as instructed by the manufacturer.

**Western Blot Analysis.** Cell monolayers (3.5-cm dishes) were washed with PBS, after which 0.1 ml of 2 $\times$  concentrated Laemmli sample buffer (49) was added, and cells were dislodged by scraping. Cell lysates were transferred to Eppendorf centrifuge tubes and subjected to several bursts of a microtip sonicator to reduce viscosity. These same samples were subsequently boiled for 3 min, and 20  $\mu$ l of each extract was subjected to SDS-PAGE using 12% Novex minigels. When completed, gels were blotted onto Trans-Blot transfer medium (0.45  $\mu$ m nitrocellulose; Bio-Rad Laboratories). The resulting blots were blocked by immersion in TBST (10 mM Tris, pH 8, 150 mM NaCl, and 0.1% Tween-20) containing 5% nonfat dry milk for 1 h at room temperature. Blots were rinsed with TBST, then incubated overnight at 4°C in TBST containing 5% BSA and a 1:1,000 dilution of the appropriate primary antibody. For detection of total and phosphorylated p38, a rabbit polyclonal anti-p38 MAP kinase antibody (New England Biolabs) and a rabbit polyclonal antiphospho-p38 MAP kinase antibody (New England Biolabs) were used. After treatment with the primary antibodies, blots were washed with three changes of TBST, then immersed in TBST containing 5% nonfat dry milk with a 1:2,000 dilution of horseradish peroxidase-conjugated goat anti-rabbit IgG. After a 60-min incubation, blots were washed three times with TBST, then placed in LumiGlo<sup>™</sup> (New England Biolabs). Immune complexes were visualized by exposure to X-ray film.

**MAPKAP Kinase 2 Assay.** ES cells were seeded ( $4 \times 10^6$  cells) into 6-well cluster dishes and maintained in SCML medium. The growth medium was removed and replaced with 1 ml of medium containing, where indicated, 50 ng/ml anisomycin or 0.5 mM sodium arsenite, and the cultures were incubated for 15 min at 37°C. Monolayers were then rinsed with PBS and treated with 1 ml PBS containing 1% Triton X-100 to promote cell lysis. After a 10-min incubation on ice, extracts were clarified by centrifugation for 20 min at 50,000 rpm in a TLA-100.3 ultracentrifuge rotor (Beckman Instruments). MAPKAP kinase 2 activity within the resulting supernatants was determined using a peptide-based substrate obtained from Upstate Biotechnology. In brief, 5  $\mu$ g sheep anti-rabbit MAPKAP kinase 2 antibody was incubated with 1 ml of a 5% suspension of protein G-sepharose in PBS containing 1% Triton X-100 and Complete<sup>®</sup> protease inhibitor (Boehringer Mannheim). After a 60-min incubation, beads were recovered by centrifugation and washed twice with 50 mM Tris, pH 7.5, 1 mM EDTA, 1 mM EGTA, 0.5 mM sodium orthovanadate, 0.1%  $\beta$ -mercaptoethanol, 1% Triton X-100, 5 mM sodium pyrophosphate, 10 mM sodium glycerophosphate, 0.1 mM PMSF, 1  $\mu$ g/ml leupeptin, 1  $\mu$ g/ml pepstatin, and 50 mM sodium fluoride (buffer A). Individual bead pellets were suspended in 1 ml of the clarified

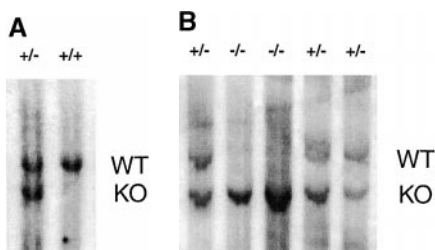
cell extracts, incubated at 4°C for 2 h with gentle rocking, and collected by centrifugation. The beads were washed once with 0.5 ml of buffer A containing 0.5 M sodium chloride, once with 0.5 ml of buffer A, and once with 0.1 ml of 20 mM 4-morpholine propanesulfonic acid, pH 7.2, containing 25 mM  $\beta$ -glycerophosphate, 5 mM EGTA, 1 mM sodium orthovanadate, and 1 mM DTT (kinase buffer). Final bead pellets were suspended in 40  $\mu$ l of an assay mixture composed of kinase buffer supplemented with 125  $\mu$ M ATP, 10 mM MgCl<sub>2</sub>, 100  $\mu$ M MAPKAP kinase 2 substrate peptide, and 250  $\mu$ Ci/ml [ $\gamma$ -<sup>32</sup>P]ATP (DuPont). Reaction mixtures were incubated at 30°C for 30 min, after which 25  $\mu$ l of each was spotted onto individual p81 phosphocellulose squares (Whatman). These filters were washed with four changes of 0.75% phosphoric acid, once with acetone, then air dried and placed in 4 ml of liquid scintillation fluid for radioactivity determination.

**Animal Handling.** All procedures involving mice were approved by the Institutional Animal Care and Use Committee at Pfizer Central Research.

## Results

**Embryonic Lethality Associated with p38 $\alpha$  Deficiency.** Mouse ES cells in which the p38 $\alpha$  gene was disrupted by homologous recombination were generated using the scheme shown in Fig. 1. The targeted ES cells successfully contributed to the germline of resulting chimeric mice. F1 generation +/– animals were grossly normal, fertile, and displayed no discernible phenotype. Contrary to expected Mendelian segregation, offspring from the F2 generation demonstrated the +/+ and +/– genotypes at frequencies of 38% ( $n = 21$ ) and 62% ( $n = 34$ ), respectively. No p38 $\alpha$ <sup>–/–</sup> animals were obtained, indicating that the p38 $\alpha$ -deficient phenotype is an embryonic lethal. We conclude that p38 $\alpha$  must serve an essential role in murine development.

**Generation of p38 $\alpha$ <sup>–/–</sup> ES Cells.** ES cells heterozygous for the p38 $\alpha$  MAP kinase locus were subjected to growth in the presence of 2 mg/ml G418 to increase selective pressure for neomycin resistance and convert the wild-type allele to a targeted allele (47). After 23 d of selection, 64 independent clonal isolates were recovered. After Southern blot analysis, 17 (25%) of these clones were shown to be null for the p38 $\alpha$  allele (Fig. 2). One of the p38 $\alpha$ <sup>–/–</sup> cell lines was expanded and used in the biochemical analysis described below.

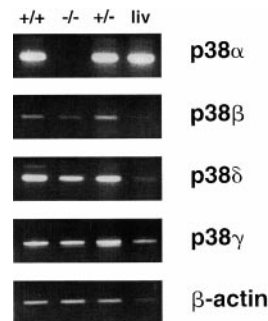


**Figure 2.** Southern analysis of ES cell clones. EcoRI restriction enzyme-digested ES cell genomic DNA was electrophoresed, transferred to nitrocellulose, and hybridized to the 5' external probe of the p38 $\alpha$  locus. (A) A blot showing wild-type (+/+) and the parental heterozygous (+/–) ES cell clones. (B) A blot showing examples of G418-surviving ES cell clones; this blot is representative of 64 surviving clones. The positions of the wild-type (WT) and knockout (KO) alleles are indicated.

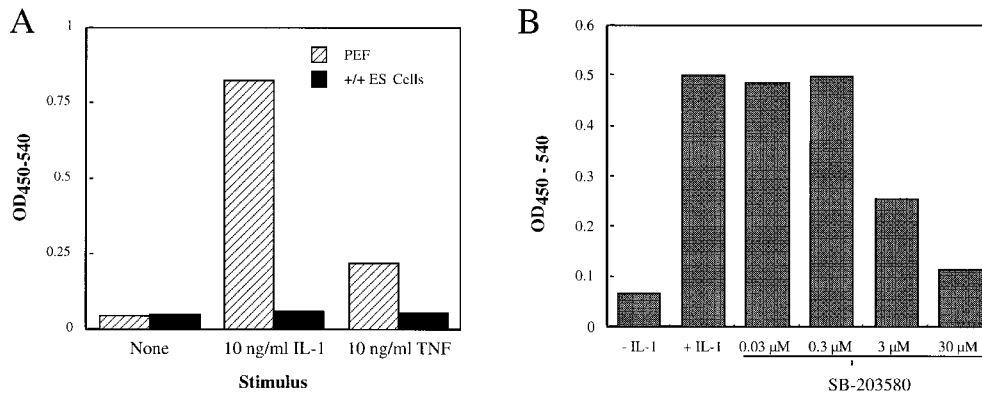
To assess whether ES cells express all known p38 family members, RT-PCR was performed on total RNA prepared from wild-type (+/+) DBA/252 ES cells and from two cell lines that demonstrated either heterozygosity (+/–) or the complete absence (–/–) of the p38 $\alpha$  allele by Southern blotting. This analysis indicated that wild-type ES cells express mRNA for p38 $\alpha$ ,  $\beta$ ,  $\gamma$ , and  $\delta$  (Fig. 3). Likewise, total RNA prepared from liver of an adult DBA wild-type mouse contained transcripts encoding each of the four p38 kinases, although the  $\beta$  species appeared to be in low abundance (Fig. 3). In contrast, total RNA isolated from p38 $\alpha$ <sup>–/–</sup> ES cells showed no evidence of the p38 $\alpha$  transcript, but these cells maintained expression of p38 $\beta$ ,  $\gamma$ , and  $\delta$  (Fig. 3). p38 $\alpha$ <sup>+/-</sup> ES cells, on the other hand, yielded RNA transcripts corresponding to each of the four p38 kinases. Within the limits of the RT-PCR approach, no obvious change in the relative expression levels of the p38 $\beta$ ,  $\gamma$ , and  $\delta$  species was observed between the +/+ and –/– ES cell lines.

**Comparison of the IL-1 Responsiveness of PEF and ES Cells.** Inflammatory cytokines such as IL-1 can promote IL-6 production by cell types that express the appropriate signaling receptors (35, 36). To determine whether inflammatory cytokine signaling cascades were operative in PEF and ES cells, individual cultures were treated with IL-1 or TNF- $\alpha$ , after which IL-6 released into the medium was determined by ELISA. In the absence of a cytokine effector, PEFs isolated from wild-type embryos produced minimal quantities of IL-6 (Fig. 4 A). However, in response to IL-1 stimulation, these fibroblasts generated large quantities of extracellular IL-6 (Fig. 4 A). Likewise, PEFs responded to TNF- $\alpha$  and generated IL-6, but cytokine levels produced in response to TNF- $\alpha$  were less than those elicited by an equivalent concentration of IL-1 (Fig. 4 A). Attempts to isolate p38 $\alpha$ <sup>–/–</sup> PEFs from day 12 chimeric embryos were unsuccessful; fibroblast-like cells were recovered after G418 selection, but these did not survive during culture. Unstimulated ES cells did not produce IL-6, and addition of IL-1 or TNF- $\alpha$  to their medium did not result in an increase in IL-6 production (Fig. 4 A). This lack of responsiveness suggests that DBA/1 lacJ ES cells lack signaling receptors for IL-1 and TNF, as has previously been noted for ES cells derived from other mice strains (50).

IL-1-induced IL-6 production by PEFs appeared to be dependent on p38. Stimulation of these fibroblasts with IL-1 in the presence of the CSAID SB-203,580 inhibited production of IL-6 in a dose-dependent manner (Fig. 4 B); a



**Figure 3.** Expression of the four murine p38 isoforms and  $\beta$ -actin in wild-type (+/+) ES cells, wild-type liver (liv), p38 $\alpha$ -deficient (–/–) ES cells, and p38 $\alpha$  heterozygous (+/–) ES cells. The observed RT-PCR product sizes agreed with the predicted values and are as follows: p38 $\alpha$ , 368 bp; p38 $\beta$ , 430 bp; p38 $\delta$ , 354 bp; p38 $\gamma$ , 632 bp; and  $\beta$ -actin, 540 bp.



**Figure 4.** PEFs, but not ES cells, produce IL-6 in response to inflammatory cytokine stimuli. (A) Cultures of PEFs or wild-type ES cells were incubated overnight in medium containing no effector (None) or 10 ng/ml of IL-1 $\beta$  or TNF- $\alpha$ , after which IL-6 released to the medium was measured by ELISA. The ELISA signal is indicated as a function of treatment (average of duplicate determinations). This experiment was repeated twice with comparable results. (B) PEFs were stimulated overnight with 10 ng/ml of IL-1 in

the absence or presence of the indicated concentration of SB-203,580. IL-6 released to the medium was determined by ELISA (average of duplicate determinations). These data are representative of three separate experiments.

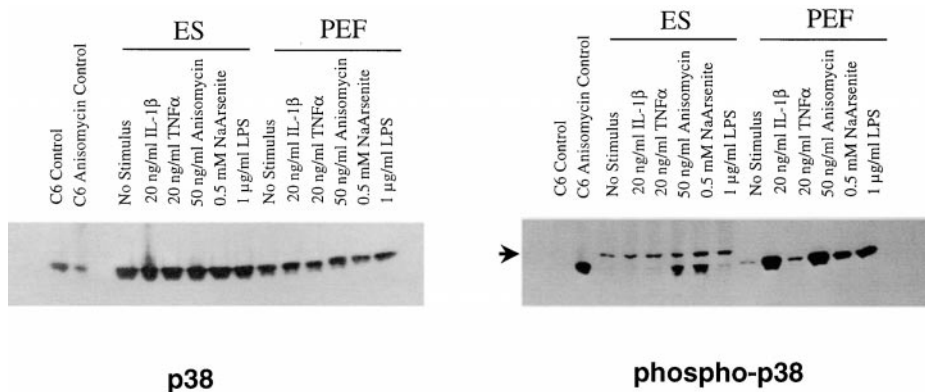
half-maximal inhibitory concentration ( $IC_{50}$ ) of 3  $\mu$ M was estimated for the inhibitory effect (Fig. 4 B).

**ES Cells and PEFs Respond to Stress Stimuli and Activate p38 $\alpha$ .** In addition to cytokines, chemical stress stimuli can activate p38 (3, 4). Therefore, ES cells and PEFs were treated with two agents previously demonstrated to activate p38, anisomycin and sodium arsenite. To assess p38 activation, cell lysates were prepared and analyzed by Western blotting both for total p38 $\alpha$  content and the presence of phosphorylated p38 $\alpha$ . The absolute amount of p38 $\alpha$  recovered in extracts of ES cells and PEFs did not change in response to the various activation stimuli (Fig. 5). In contrast, quantities of phosphorylated p38 $\alpha$  were not equivalent, and were dependent on the activation stimulus (Fig. 5). ES cells that were pretreated with anisomycin (50 ng/ml) or sodium arsenite (0.5 mM) yielded phosphorylated p38 $\alpha$  (Fig. 5). On the other hand, stimulation of the ES cells with IL-1 or TNF- $\alpha$  did not promote p38 $\alpha$  phosphorylation (Fig. 5); this lack of cytokine responsiveness again suggests that ES cells do not possess the corresponding cytokine receptors. In addition, LPS did not promote phosphorylation of ES cell p38 $\alpha$ . Therefore, ES cells possess p38 $\alpha$ , and this en-

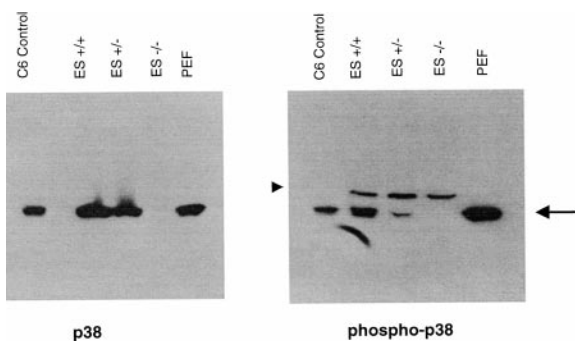
zyme can be activated by chemical inducers of stress such as anisomycin and sodium arsenite, but not by inflammatory cytokines (IL-1 or TNF- $\alpha$ ) or by LPS.

PEFs also responded to the chemical stress stimuli to generate phosphorylated p38 $\alpha$ . Nonstimulated PEFs possessed a low level of phosphorylated p38 $\alpha$ , and treatment with either anisomycin or sodium arsenite elevated levels of the phosphorylated enzyme (Fig. 5). Levels of total p38 $\alpha$  in the fibroblasts were not affected by the various stimuli (Fig. 5). In addition, PEFs stimulated with IL-1, and to a lesser degree with TNF- $\alpha$ , yielded elevated levels of phosphorylated p38 $\alpha$  (Fig. 5); similarly, LPS treatment yielded elevated levels of the phosphorylated enzyme. Therefore, PEFs differ from ES cells in that they generate phosphorylated p38 $\alpha$  in response to chemical stress inducers and selective cytokine activators.

p38 $\alpha$ -deficient ES cells were subjected to a similar analysis. Extracts derived from anisomycin-treated p38 $\alpha^{+/-}$  and p38 $\alpha^{+/+}$  ES cells contained p38 $\alpha$ , and this enzyme was phosphorylated in response to the chemical stress inducer (Fig. 6). In contrast, extracts derived from anisomycin-treated p38 $\alpha^{-/-}$  ES cells did not contain p38 $\alpha$  or the phosphorylated p38 $\alpha$  polypeptide species (Fig. 6).



**Figure 5.** Identification of stimuli that promote p38 $\alpha$  phosphorylation in PEFs and wild-type ES cells. Cells were stimulated for 15 min in the presence of the indicated effector, and then were solubilized by detergent extraction. Equal quantities of these extracts were fractionated on two separate gels, and the separated polypeptides were transferred to nitrocellulose for Western blot analysis. One blot was treated with an antibody that detects total p38 $\alpha$  (p38), and the other with an antibody that detects phosphorylated p38 $\alpha$  (phospho-p38). Extracts derived from control and anisomycin-treated C6 cells are included as standards. Identity of the slightly slower migrating antigenic species detected in the ES cell extracts with the phospho-specific antibody (arrow) is unknown.



**Figure 6.** Demonstration that  $p38\alpha^{-/-}$  ES cells lack immunodetectable  $p38\alpha$ . Wild-type ( $ES^{+/+}$ ) and  $p38\alpha$ -deficient ES cells were stimulated with sodium arsenite for 15 min and then solubilized by detergent extraction. Duplicate samples of each extract were loaded onto separate gels and processed for Western blotting. Antigen detected after staining these blots with an antibody against total ( $p38$ ) or one selective for phosphospecific (phospho- $p38$ ) forms are indicated. Extracts of IL-1-stimulated PEFs and C6 cells are included as standards. Arrow indicates the migration of  $p38\alpha$ , and the arrowhead marks the antigen detected by the phospho-specific antiserum in the ES cell samples that is not  $p38$  dependent.

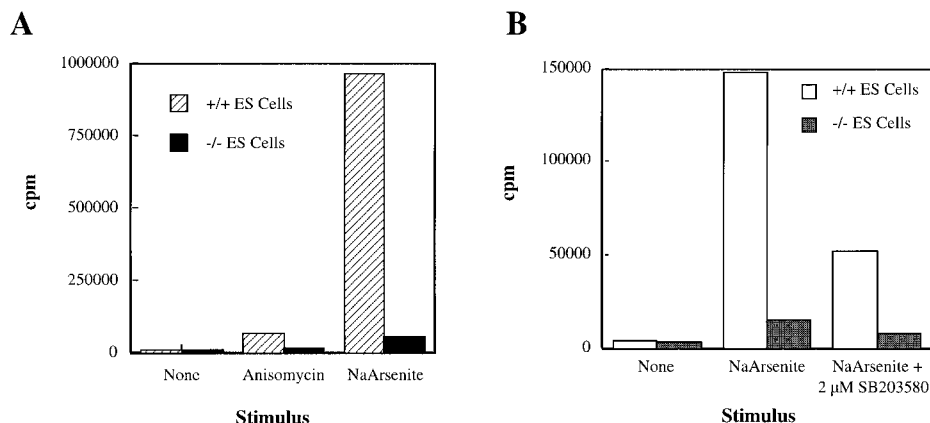
**MAPKAP Kinase 2 Activation Is Dependent on  $p38\alpha$ .** Previous studies established that MAPKAP kinase 2 is a substrate of  $p38\alpha$  (4). However, the extent to which other kinases may participate *in vivo* in the activation of MAPKAP kinase 2 remains unclear. To determine whether stress activation of MAPKAP kinase 2 in ES cells is  $p38\alpha$  dependent,  $+/+$  and  $-/-$  ES cells were stimulated with anisomycin or sodium arsenite, and cell extracts were isolated. MAPKAP kinase 2 was subsequently recovered by immunoprecipitation, and kinase activity associated with the immunoprecipitates was assessed. In the absence of a stimulus, both  $p38\alpha^{+/+}$  and  $p38\alpha^{-/-}$  ES cells yielded low levels of immunoprecipitable MAPKAP kinase 2 activity (Fig. 7 A). Pretreatment with anisomycin or sodium arsenite stimulated MAPKAP kinase 2 activity in extracts derived from  $p38\alpha^{+/+}$  ES cells. Sodium arsenite-stimulated cells achieved a greater level of activity than did the anisomycin-treated cells (Fig. 7 A). In contrast to this large increase in MAPKAP kinase 2 activity,  $p38\alpha^{-/-}$  cells stimulated with anisomycin or so-

dium arsenite demonstrated greatly attenuated responses (Fig. 7 A). No significant increase in MAPKAP kinase 2 activity was observed when  $p38\alpha^{-/-}$  cells were stimulated with anisomycin, and sodium arsenite treatment yielded only a fourfold increase in activity (Fig. 7 A). Sodium arsenite treatment of  $p38\alpha^{+/+}$  ES cells, on the other hand, yielded >800-fold increase in MAPKAP kinase 2 activity relative to the nonstimulated level (Fig. 7 A).

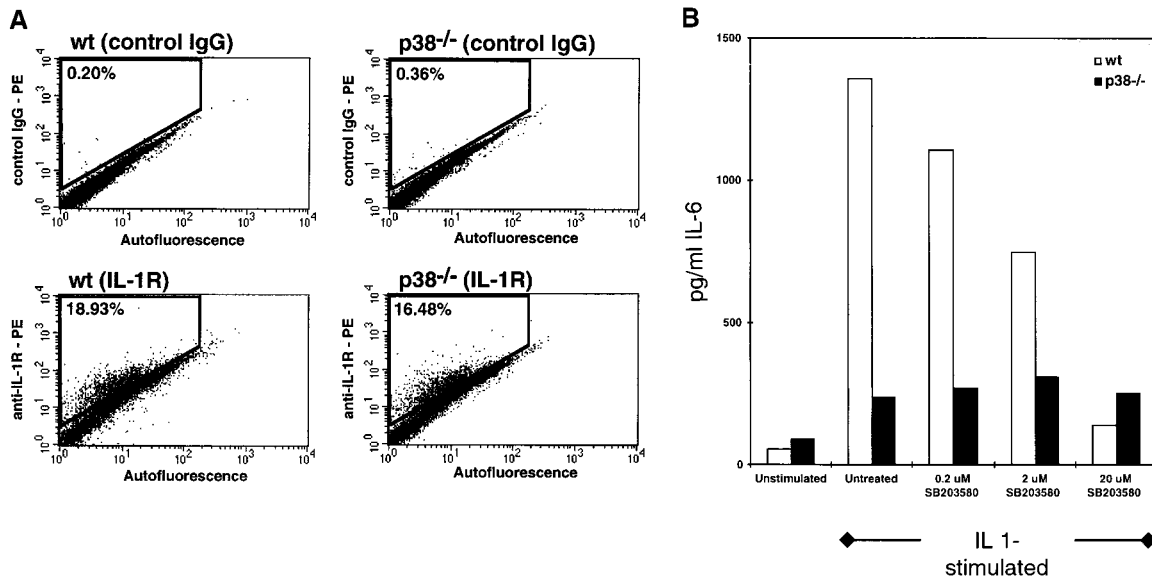
Sodium arsenite-induced MAPKAP kinase 2 activation was inhibited by the CSAID SB-203,580.  $p38\alpha^{+/+}$  ES cells treated with sodium arsenite in the presence of 2  $\mu$ M SB-203,580 yielded 67% less MAPKAP kinase 2 activity than did their counterparts activated in the absence of the CSAID (Fig. 7 B). Likewise, the modest increase in MAPKAP kinase 2 activity observed when  $p38\alpha^{-/-}$  ES cells were stimulated with sodium arsenite was inhibited by 63% in the presence of SB-203,580 (Fig. 7 B). Therefore, absence of  $p38\alpha$  greatly impaired the ability of stress stimuli to promote MAPKAP kinase 2 activation, but a small CSAID-sensitive component remained in the  $p38\alpha$ -deficient cells.

**ES Cells Differentiated *In Vitro* to IL-1R-positive Fibroblast-like Cells Demonstrate an Impaired Response to IL-1 in the Absence of  $p38\alpha$ .** ES cells can undergo differentiation-type processes when maintained under appropriate culture conditions (51). In an attempt to derive cells expressing IL-1R,  $p38\alpha^{+/+}$  and  $p38\alpha^{-/-}$  ES cells were allowed to form embryoid bodies. These structures then were dissociated, and the resulting individual cells were cultured for an additional 12 d in the presence of a cytokine mixture composed of IL-3, IL-6, and GM-CSF. The resulting cell populations were separated by FACS<sup>®</sup> on the basis of binding of murine anti-IL-1R antibodies. The percentage of cells staining positive for IL-1R was comparable in both the  $p38\alpha^{+/+}$  and  $p38\alpha^{-/-}$  cultures, representing 19 and 16%, respectively (Fig. 8 A). Staining above a nonimmune IgG control was used as a specificity control. Before the *in vitro* differentiation process, neither ES cell population stained positive for type 1 IL-1R (data not shown).

FACS<sup>®</sup>-sorted IL-1R-positive cells were cultured in the presence of IL-1. Cytokine stimulation of the IL-1R-positi-



**Figure 7.** MAPKAP kinase 2 activation in wild-type and  $p38\alpha^{-/-}$  ES cells. Cultures of  $p38\alpha^{+/+}$  and  $p38\alpha^{-/-}$  ES cells were incubated with the indicated effector for 15 min, after which the cells were solubilized by detergent extraction, and MAPKAP kinase 2 was recovered by immunoprecipitation. The resulting immunoprecipitates were then assayed for kinase activity using a peptide substrate and [ $\gamma$ -<sup>32</sup>P]ATP. Radioactivity (in cpm) incorporated into the peptide substrate is indicated as a function of treatment; a background (no enzyme control) was subtracted to correct for non-peptide-associated radioactivity sticking to the filter. This experiment was repeated twice with comparable results. Each value is the average of duplicate determinations.

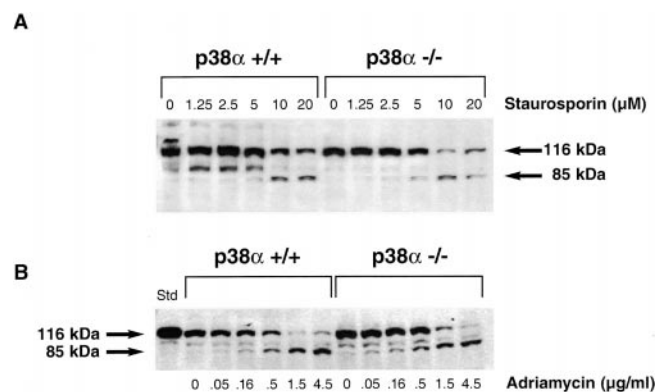


**Figure 8.** IL-1-induced IL-6 production by in vitro-differentiated ES cells. Wild-type and p38<sup>-/-</sup> ES cells were subjected to in vitro differentiation. (A) Cells recovered from each culture were stained with a PE-labeled control IgG or PE-labeled anti-IL-1R IgG, and the cell mixtures were analyzed by FACS<sup>®</sup>. Cells were gated by autofluorescence, an indicator of size (x-axis), and by PE fluorescence intensity (y-axis). The percentage of cells demonstrating a PE fluorescence intensity above the background level is indicated in each panel. (B) IL-1R-positive cells recovered by sorting were plated into culture wells and stimulated with IL-1 $\beta$  (10 ng/ml) in the absence or presence of SB-203,580. After an overnight stimulation, media were harvested and assayed for IL-6 by ELISA. The amount of IL-6 produced is indicated as a function of treatment. These results are representative of four separate experiments. wt, wild-type.

tive p38<sup>+/+</sup> cells resulted in expression of IL-6 (Fig. 8 B); in the absence of IL-1, little IL-6 was generated (Fig. 8 B). Coincubation with SB-203,580 during the IL-1 activation period led to a dose-dependent decrease in IL-6 production (Fig. 8 B). The IC<sub>50</sub> for this response was estimated to be 2  $\mu$ M, a value consistent with the IC<sub>50</sub> observed in PEFs (Fig. 1). In contrast, cultures of IL-1R-positive p38<sup>-/-</sup> cells generated much less IL-6 in response to IL-1 stimulation, and this increase was not reduced by the CSAID (Fig. 8).

**Absence of p38 $\alpha$  Does Not Alter ES Cell Apoptosis.** p38 $\alpha$  has been implicated as an important regulator of apoptotic processes (52, 53), and we considered the possibility that a defect in apoptosis contributed to the embryonic lethality observed with the knockout animals. To assess the apoptotic responsiveness of the p38 $\alpha$ <sup>+/+</sup> and p38 $\alpha$ <sup>-/-</sup> ES cells, they were initially treated with anti-Fas, a well-characterized inducer of apoptosis (53). However, DBA ES cells failed to bind fluorescently labeled anti-Fas antibody (as detected by FACS<sup>®</sup>; data not shown), negating use of the Fas-induced apoptotic mechanism. Therefore, chemical stimuli were used to promote apoptosis of p38 $\alpha$ <sup>+/+</sup> and p38 $\alpha$ <sup>-/-</sup> ES cells. Staurosporin induces apoptosis in many cell systems, and this process is accompanied by caspase-dependent cleavage of the cytoplasmic protein poly(ADP) ribose polymerase (PARP [54]). p38 $\alpha$ <sup>+/+</sup> ES cells treated overnight with increasing concentrations of staurosporin demonstrated a dose-dependent increase in levels of the 85-kD PARP cleavage product as assessed by Western analysis (Fig. 9 A). Extracts prepared from cells treated with concentrations of staurosporin <5  $\mu$ M did not contain the 85-kD cleavage fragment (Fig. 9 A). At these lower staurosporin concentrations,

wild-type cells yielded full-length 116-kD PARP and a slightly faster migrating antigenic species; presence of this latter species was not staurosporin dependent. However, as the concentration of staurosporin was increased to >10  $\mu$ M, levels of the 85-kD PARP cleavage product increased in the p38<sup>+/+</sup> ES cell extracts (Fig. 9 A). Appearance of the PARP cleavage fragment within extracts of p38<sup>-/-</sup> ES cells demonstrated a similar dependence on staurosporin concentration (Fig. 9 A). No significant difference in the responsiveness of the two cell types was noted in multiple experiments.



**Figure 9.** Deletion of p38 $\alpha$  does not inhibit ES cell apoptosis in response to chemical stimuli. p38 $\alpha$ <sup>+/+</sup> and p38 $\alpha$ <sup>-/-</sup> ES cells were treated with the indicated concentration of staurosporin (A) or adriamycin (B) for 16 h, and then were disaggregated with SDS sample buffer. Samples of the resulting lysates were subjected to Western blot analysis with an anti-PARP antibody. Regions of the blots corresponding to full-length 116-kD PARP and its 85-kD cleavage fragment are shown as a function of the effector concentration.

Adriamycin was recently reported to induce caspase-dependent apoptosis of murine ES cells (55), and sensitivity to this agent was also characterized. Extracts prepared from both p38<sup>+/+</sup> and p38<sup>-/-</sup> ES cells yielded the 85-kD PARP cleavage fragment in response to adriamycin treatment (Fig. 9 B), and concentrations of this agent required to generate the cleavage fragment again were similar between the two cell lines (Fig. 9 B).

Apoptosis was also assessed by flow cytometry using the annexin V/propidium iodide staining procedure (56). Adriamycin concentrations between 0.05 and 4.5  $\mu\text{g/ml}$  led to a dose-dependent decrease in cell viability (Table I). Comparison of the sensitivity of p38<sup>+/+</sup> and p38<sup>-/-</sup> ES cells revealed a similar concentration dependence in the annexin V/propidium iodide staining profiles (Table I). Moreover, addition of 10  $\mu\text{M}$  SB-203,580 to the culture medium did not significantly alter the percentages of viable cells detected in the adriamycin-treated p38<sup>+/+</sup> and p38<sup>-/-</sup> ES cell populations (Table I).

## Discussion

p38 is activated by a variety of extracellular stimuli, including inflammatory cytokines such as IL-1 and TNF, growth factors such as fibroblast growth factor (FGF) and CSF, osmolarity changes, UV light, and chemical agents that promote a stress response (7). The diverse nature of these activators suggests that p38 serves as a point of convergence for a variety of extracellular effectors. Based on this multiplicity of activators, it is perhaps not surprising that deletion of p38 $\alpha$  led to embryonic lethality. A similar fate has been observed for mice engineered to lack other signaling kinases including MKK4 (50, 57); function of these signaling kinases must be essential to normal development. Several

CSAIDs recently were reported to inhibit FGF-induced proliferation of Swiss 3T3 fibroblasts (58). Perhaps a p38 $\alpha$  dependence in a growth factor-induced proliferative response contributes to the lethal phenotype of the p38 $\alpha$ <sup>-/-</sup> embryos, and to our inability to maintain p38 $\alpha$ <sup>-/-</sup> PEFs isolated from chimeric embryos in culture. Since mice, like humans, appear to express multiple p38 kinase family members (59), the developmental arrest suggests that the different enzymes do not perform redundant activities, at least during embryonic development. Deletion of p38 $\alpha$  also has been associated with murine embryonic lethality in a 129SvEv  $\times$  C57BL/6 genetic background, where the arrest was attributed to a defect in placental development (60).

The four human p38 kinases display distinct expression patterns (23, 24). By Northern blot analysis, transcripts for 38 $\alpha$ , p38 $\beta$ , and p38 $\delta$  were found in many human tissues, but the relative abundance of an individual species varied widely from tissue to tissue (23). In contrast, p38 $\gamma$  transcripts were abundantly expressed only in skeletal muscle, with minimal expression in most other tissues (23). Not only is expression regulated, but also within the same cell type two forms of the enzyme may demonstrate differential activation requirements. For example, human macrophages express both p38 $\alpha$  and p38 $\delta$ , but p38 $\alpha$  was activated to a greater extent than was p38 $\delta$  after LPS stimulation (26). This differential activation may be achieved through the use of distinct upstream activators (20, 61, 62). For example, p38 $\alpha$  was efficiently activated by MKK3, MKK4, or MKK6 in transfected COS-7 cells, whereas p38 $\beta$  was phosphorylated only by MKK6 (20). Finally, forced activation of overexpressed p38 $\alpha$  and p38 $\beta$  was reported to promote cardiomyocyte apoptosis and hypertrophy, respectively, suggesting that the individual p38 kinases initiate separate cellular processes (27).

Generation of cells deficient in p38 $\alpha$  allowed us to explore this enzyme's role in several stress response pathways. Chemical agents such as anisomycin and sodium arsenite promote activation of p38 in a variety of cell types (3, 4). Indeed, p38 $\alpha$ <sup>+/+</sup> ES cells and PEFs treated with these agents demonstrated increased phosphorylation of p38 $\alpha$  and an increased level of MAPKAP kinase 2 activity. In contrast, p38 $\alpha$ -deficient ES cells failed to efficiently activate MAPKAP kinase 2 in response to anisomycin or sodium arsenite exposure. Therefore, p38 $\alpha$  appears to be a critical component of the MAPKAP kinase 2 activation cascade in response to chemical stress inducers. Interestingly, a small increase in MAPKAP kinase 2 activity persisted after sodium arsenite treatment of p38 $\alpha$ <sup>-/-</sup> ES cells and, as in wild-type ES cells, this increase was blocked by SB-203,580. The magnitude of the CSAID effect against the residual activity was similar to that observed in wild-type cells. Since human p38 $\beta$ , in contrast to the  $\gamma$  and  $\delta$  isoforms, is CSAID sensitive (20, 21, 23–25), perhaps the mouse equivalent is responsible for the attenuated response.

Mouse PEFs treated with IL-1, and to a lesser degree with TNF- $\alpha$ , responded by phosphorylating p38 $\alpha$  and producing and/or secreting IL-6. Fibroblast IL-6 production was inhibited by SB-203,580. ES cells, on the other hand, lacked receptors for IL-1 and TNF- $\alpha$ ; IL-1 (or TNF) failed

**Table I.** ES Cell Viability after Adriamycin-induced Apoptosis

Adriamycin	Viability			
	p38 $\alpha$ <sup>+/+</sup>	p38 $\alpha$ <sup>+/+</sup> + SB-203,580	p38 $\alpha$ <sup>-/-</sup>	p38 $\alpha$ <sup>-/-</sup> + SB-203,580
$\mu\text{g/ml}$	%	%	%	%
0	72	64	68	66
0.05	51	48	43	36
0.16	44	37	30	29
0.50	28	27	22	21
1.50	21	19	17	24
4.50	23	20	17	19

ES cells ( $2 \times 10^6$  cells per well in 6-well cluster plates) were incubated for 18 h with the indicated concentration of adriamycin. Where indicated, SB-203,580 was also present at 10  $\mu\text{M}$ . The cells were subsequently harvested and analyzed by flow cytometry after staining with FITC-labeled annexin V and propidium iodide. The percentage of viable cells (those not staining with either annexin V or propidium iodide) was determined based on 10,000 gated events. Data are representative of three separate experiments.



to promote p38 $\alpha$  phosphorylation and to stimulate IL-6 production. However, after wild-type ES cells were subjected to an in vitro differentiation process, a percentage of the population expressed the type 1 IL-1R. These receptor-positive cells responded to IL-1 and generated IL-6 via an SB-203,580-inhibitable process.

p38 $\alpha^{-/-}$  ES cells also gave rise to a population of IL-1R-positive cells after the in vitro differentiation process. Based on the percentage of cells that expressed this receptor, no difference in the efficiency of the differentiation response to an IL-1R-positive state was observed between p38 $\alpha^{+/+}$  and p38 $\alpha^{-/-}$  cell types. A large number of cytokine and/or growth factor signaling cascades have been reported to involve p38 (7); for example, SB-203,580 is reported to inhibit GM-CSF-induced cell proliferation (63). Moreover, p38 has been implicated as an important element in cellular differentiation processes. For example, the terminal differentiation of L8 muscle cells is blocked by SB-203,580 (64). Therefore, the similar efficiency at which wild-type and p38 $\alpha^{-/-}$  ES cells differentiated to an IL-1R-positive phenotype was somewhat of a surprise. However, the IL-1R-positive p38 $\alpha^{-/-}$  cells were greatly impaired in their IL-1 responsiveness as judged by a reduction in IL-6 production relative to wild-type cells.

RT-PCR indicated that wild-type ES cells express all four p38 kinase family members. Knockout of the p38 $\alpha$  allele eliminated expression of p38 $\alpha$  mRNA without altering expression of the other three kinases. Therefore, the gene-targeting strategy successfully eliminated expression of p38 $\alpha$  individually. Despite loss of just one of the four p38 kinases, p38 $\alpha^{-/-}$  ES cells, in contrast to their wild-type counterparts, did not respond to anisomycin or sodium arsenite to activate MAPKAP kinase 2, and they did not generate IL-6 in response to IL-1 stimulation after in vitro differentiation. With respect to these activities (and within the context of the ES cell), therefore, p38 $\alpha$  does not serve a redundant role to its relatives. The markedly reduced responsiveness of p38 $\alpha^{-/-}$  ES cells is surprising based on literature reports indicating that MAPKAP kinase 2 is an in vitro substrate for both p38 $\alpha$  and p38 $\beta$  family members (25), and evidence that IL-1 treatment can promote activation of all p38 paralogs (23, 25, 26, 59).

p38 kinases have also been implicated as regulators of apoptosis. For example, activation of p38 is reported to be required for apoptosis of PC-12 cells after nerve growth factor withdrawal (52). Likewise, serum removal from rat-1 fibroblasts led to p38 activation and to apoptosis (40). In contrast, an inhibitor of p38, SB-202,190, is reported to promote apoptosis of Jurkat cells (39); overexpression of p38 $\beta$ , but not p38 $\alpha$ , attenuated the SB-202,190 effect, suggesting that the response was isoform dependent. ES cells demonstrated an apoptotic response when treated with the chemical inducers of apoptosis, staurosporin or adriamycin. Two separate indicators of apoptosis, PARP cleavage and annexin V binding, were observed in ES cells treated with the chemical inducers. Importantly, p38 $\alpha^{+/+}$  and p38 $\alpha^{-/-}$  ES cells were equally sensitive to the chemical-induced apoptotic response. This suggests that p38 $\alpha$  does not play a dominant role in this

form of ES cell apoptosis. Moreover, the ES cell apoptotic response was not affected by SB-203,580, suggesting that other CSAID-sensitive proteins also were not involved in the death response.

The ability of CSAIDs to modulate inflammatory cytokine production by monocytes and macrophages highlights p38 as an attractive pharmaceutical target. Human monocytes were recently reported to express both p38 $\alpha$  and p38 $\delta$ , and macrophages derived from in vitro differentiation of blood monocytes continued to express both of these kinases (26). In contrast, p38 $\beta$  and p38 $\gamma$  were not expressed in the monocytes and/or macrophages (26). When macrophages were stimulated with LPS, a large increase in p38 $\alpha$  activity was observed, with only a modest activation of p38 $\delta$  (26). Therefore, from the standpoint of regulating monocyte and/or macrophage inflammatory function, it appears that p38 $\alpha$  is the key p38 kinase. The data presented in this report using in vitro-differentiated ES cells clearly support p38 $\alpha$  serving as a key mediator of IL-1 signal transduction. IL-1R-positive p38 $\alpha^{+/+}$  cells responded to IL-1 and generated IL-6. In contrast, p38 $\alpha^{-/-}$  IL-1R-positive cells generated minimal quantities of IL-6. IL-1, therefore, appears similar to LPS in its utilization of p38 $\alpha$  to achieve target cell activation.

The authors wish to thank Jeff Stock for his assistance in the generation of the knockout construct.

Submitted: 31 August 1999

Revised: 24 December 1999

Accepted: 29 December 1999

Released online: 6 March 2000

## References

1. Karin, M. 1998. Mitogen-activated protein kinase cascades as regulators of stress responses. *Ann. NY Acad. Sci.* 851:139–146.
2. Kyriakis, J.M., and J. Auruch. 1996. Sounding the alarm: protein kinase cascades activated by stress and inflammation. *J. Biol. Chem.* 271:24313–24316.
3. Ludwig, S., A. Hoffmeyer, M. Goebeler, K. Kilian, H. Hafner, B. Neufeld, J. Han, and U.R. Rap. 1998. The stress inducer arsenite activates mitogen-activated protein kinases extracellular signal-regulated kinases 1 and 2 via a MAPK kinase 6/p38-dependent pathway. *J. Biol. Chem.* 273:1917–1922.
4. Rouse, J., P. Cohen, S. Trigon, M. Morange, A. Alonso-Liamares, D. Zamanillo, T. Hunt, and A.R. Nebreda. 1994. A novel kinase cascade triggered by stress and heat shock that stimulates MAPKAP kinase-2 and phosphorylation of the small heat shock proteins. *Cell.* 78:1027–1037.
5. Raingeaud, J., S. Gupta, J. S. Rogers, M. Dickens, J. Han, R.J. Ulevitch, and R.J. Davis. 1995. Pro-inflammatory cytokines and environmental stress cause p38 mitogen-activated protein kinase activation by dual phosphorylation on tyrosine and threonine. *J. Biol. Chem.* 270:7420–7426.
6. Han, J., J.-D. Lee, L. Bibbs, and R.J. Ulevitch. 1994. A MAP kinase targeted by endotoxin and hyperosmolarity in mammalian cells. *Science.* 265:808–811.
7. New, L., and J. Han. 1998. The p38 MAP kinase pathway and its biological function. *Trends Cardiovascular Medicine.* 8:220–229.
8. Kyriakis, J.M., P. Banerjee, E. Nikolakaki, T. Dai, E.A. Ru-

- bie, M.F. Ahmad, J. Avruch, and J.R. Woodgett. 1994. The stress-activated protein kinase subfamily of c-Jun kinases. *Nature*. 369:156–160.
9. Whitmarsh, A.J., S.H. Yang, M.S. Su, A.D. Sharrocks, and R.J. Davis. 1997. Role of p38 and JNK mitogen-activated protein kinases in the activation of ternary complex factors. *Mol. Cell. Biol.* 17:2360–2371.
  10. Wang, X., and D. Ron. 1996. Stress-induced phosphorylation and activation of the transcriptional factor CHOP (GADD153) by p38 MAP kinase. *Science*. 272:1347–1349.
  11. Iordanov, M., K. Bender, T. Ade, W. Schmid, C. Sachsenmaier, K. Engel, M. Gaestel, H.J. Rahmsdorf, and P. Herrlich. 1997. CREB is activated by UVC through a p38/HOG-1-dependent protein kinase. *EMBO (Eur. Mol. Biol. Organ.) J.* 16:1009–1022.
  12. Han, J., Y. Jiang, Z. Li, V.V. Kravchenko, and R.J. Ulevitch. 1997. Activation of the transcription factor MEF2C by the MAP kinase p38 in inflammation. *Nature*. 386:296–299.
  13. Stokoe, D., D.G. Campbell, S. Nakielny, H. Hidaka, S.J. Leever, C. Marshall, and P. Cohen. 1992. MAPKAP kinase-2; a novel protein kinase activated by mitogen-activated protein kinase. *EMBO (Eur. Mol. Biol. Organ.) J.* 11:3985–3994.
  14. McLaughlin, M.M., S. Kumar, P.C. McDonnell, S. Van Horn, J.C. Lee, G.P. Livi, and P.R. Young. 1996. Identification of mitogen-activated protein (MAP) kinase-activated protein kinase-3, a novel substrate of CSBP p38 MAP kinase. *J. Biol. Chem.* 271:8488–8492.
  15. New, L., Y. Jiang, M. Zhao, K. Liu, W. Zhu, L.J. Flood, Y. Kato, G.C. Parry, and J. Han. 1998. PRAK, a novel protein kinase regulated by the p38 MAP kinase. *EMBO (Eur. Mol. Biol. Organ.) J.* 17:3372–3384.
  16. Cobb, M.H., and E.J. Goldsmith. 1995. How MAP kinases are regulated. *J. Biol. Chem.* 270:14843–14846.
  17. Derijard, B., J. Raingeaud, T. Barrett, I.-H. Wu, J. Han, R.J. Ulevitch, and R.J. Davis. 1995. Independent human MAP kinase signal transduction pathways defined by MEK and MKK isoforms. *Science*. 267:682–685.
  18. Han, J., J.-D. Lee, Y. Jiang, Z. Li, L. Feng, and R.J. Ulevitch. 1996. Characterization of the structure and function of a novel MAP kinase kinase (MKK6). *J. Biol. Chem.* 271:2886–2891.
  19. Lee, J.C., J.T. Laydon, P.C. McDonnell, T.F. Gallagher, S. Kumar, D. Green, D. McNulty, M.J. Blumenthal, J.R. Heys, S.W. Landvatter, et al. 1994. A protein kinase involved in the regulation of inflammatory cytokine biosynthesis. *Nature*. 372:739–746.
  20. Jiang, Y., C. Chen, Z. Li, W. Gu, J.A. Gegner, S. Lin, and J. Han. 1996. Characterization of the structure and function of a new mitogen-activated protein kinase (p38 $\beta$ ). *J. Biol. Chem.* 271:17920–17926.
  21. Stein, B., M.X. Yang, D.B. Young, R. Janknecht, T. Hunter, B.W. Murray, and M.S. Barbosa. 1997. p38-2, a novel mitogen-activated protein kinase with distinct properties. *J. Biol. Chem.* 272:19509–19517.
  22. Li, Z., Y. Jiang, R.J. Ulevitch, and J. Han. 1996. The primary structure of p38 $\gamma$ : a new member of the p38 group of MAP kinases. *Biochem. Biophys. Res. Commun.* 228:334–340.
  23. Wang, X.S., K. Diener, C.L. Manthey, S.-W. Wang, B. Rosenzweig, J. Bray, J. Delaney, C.N. Cole, P.-Y. Chan-Hui, N. Mantlo, et al. 1997. Molecular cloning and characterization of a novel p38 mitogen-activated protein kinase. *J. Biol. Chem.* 272:23668–23674.
  24. Jiang, Y., H. Gram, M. Zhao, L. New, J. Gu, L. Feng, F. Di Padova, R.J. Ulevitch, and J. Han. 1997. Characterization of the structure and function of the fourth member of p38 group mitogen-activated protein kinases, p38d. *J. Biol. Chem.* 272:30122–30128.
  25. Kumar, S., P.C. McDonnell, R.J. Gum, A.T. Hand, J.C. Lee, and P.R. Young. 1997. Novel homologues of CSBP/p38 MAP kinase: activation, substrate specificity and sensitivity to inhibition by pyridinyl imidazoles. *Biochem. Biophys. Res. Commun.* 235:533–538.
  26. Hale, K.K., D. Trollinger, M. Rihaneck, and C.L. Manthey. 1999. Differential expression and activation of p38 mitogen-activated protein kinase  $\alpha$ ,  $\beta$ ,  $\gamma$ ,  $\delta$  in inflammatory cell lineages. *J. Immunol.* 162:4246–4252.
  27. Wang, Y., S. Huang, V.P. Sah, J. Ross, Jr., J.H. Brown, J. Han, and K.R. Chien. 1998. Cardiac muscle cell hypertrophy and apoptosis induced by distinct members of the p38 mitogen-activated protein kinase family. *J. Biol. Chem.* 273:2161–2168.
  28. Cuenda, A., J. Rouse, Y.N. Doza, R. Meier, P. Cohen, T.F. Gallagher, P.R. Young, and J.C. Lee. 1995. SB 203580 is a specific inhibitor of a MAP kinase homologue which is stimulated by cellular stresses and interleukin-1. *FEBS Lett.* 364:229–233.
  29. Young, P.R., M.M. McLaughlin, S. Kumar, S. Kassis, M.L. Doyle, D. McNulty, F.F. Gallagher, S. Fisher, P.C. McDonnell, S.A. Carr, et al. 1997. Pyridinyl imidazole inhibitors of p38 mitogen-activated protein kinase bind in the ATP site. *J. Biol. Chem.* 272:12116–12121.
  30. Wilson, K.P., P.G. McCaffrey, K. Hsiao, S. Pazhanisamy, V. Galullo, G.W. Bemis, M.J. Fitzgibbon, P.R. Caron, M.A. Murcko, and M.S. Su. 1997. The structural basis for the specificity of pyridinylimidazole inhibitors of p38 MAP kinase. *Chem. Biol.* 4:423–431.
  31. Wang, Z., B.J. Canagarajah, J.C. Boehm, S. Kassis, M.H. Cobb, P.R. Young, S. Abdel-Meguid, J.L. Adams, and E.J. Goldsmith. 1998. Structural basis of inhibitor selectivity in MAP kinases. *Structure*. 6:1117–1128.
  32. Lisnock, J.-M., A. Tebben, B. Frantz, E.A. O'Neill, G. Croft, S.J. O'Keefe, B. Li, C. Hacker, S. de Laszlo, A. Smith, et al. 1998. Molecular basis for p38 protein kinase inhibitor specificity. *Biochemistry*. 37:16573–16581.
  33. Lee, J.C., and P.R. Young. 1996. Role of CSBP/p38/RK stress response kinase in LPS and cytokine signaling mechanisms. *J. Leukoc. Biol.* 59:152–157.
  34. Perregaux, D.G., D. Dean, M. Cronan, P. Connelly, and C.A. Gabel. 1995. Inhibition of interleukin-1 $\beta$  production by SKF86002: evidence of two sites of in vitro activity and of a time and system dependence. *Mol. Pharmacol.* 48:433–442.
  35. Beyaert, R., A. Cuenda, W. Vanden Berghe, S. Plaisance, J.C. Lee, G. Haegeman, P. Cohen, and W. Fiers. 1996. The p38/RK mitogen-activated protein kinase pathway regulates interleukin-6 synthesis in response to tumor necrosis factor. *EMBO (Eur. Mol. Biol. Organ.) J.* 15:1914–1923.
  36. Pouliot, M., J. Baillargeon, J.C. Lee, L.G. Cleland, and M.J. James. 1997. Inhibition of prostaglandin endoperoxide synthase-2 expression in stimulated human monocytes by inhibitors of p38 mitogen-activated protein kinase. *J. Immunol.* 158:4930–4937.
  37. Rincon, M., H. Enslin, J. Raingeaud, M. Recht, T. Zapton, M.S. Su, L.A. Penix, R.J. Davis, and R.A. Flavell. 1998. Interferon-gamma expression by Th1 effector T cells mediated by the p38 MAP kinase signaling pathway. *EMBO (Eur. Mol. Biol. Organ.) J.* 17:2817–2829.
  38. Vanden Berghe, W., S. Plaisance, E. Boone, K. De Bosscher, M.L. Schmitz, W. Fiers, and G. Haegeman. 1998. p38 and

- extracellular signal-regulated kinase mitogen-activated protein kinase pathways are required for nuclear factor- $\kappa$ B p65 trans-activation mediated by tumor necrosis factor. *J. Biol. Chem.* 273:3285–3290.
39. Nemoto, S., J. Xiang, S. Huang, and A. Lin. 1998. Induction of apoptosis by SB202190 through inhibition of p38b mitogen-activated protein kinase. *J. Biol. Chem.* 273:16415–16420.
  40. Kummer, J.L., P.K. Rao, and K.A. Heidenreich. 1997. Apoptosis induced by withdrawal of trophic factors is mediated by p38 mitogen-activated protein kinase. *J. Biol. Chem.* 272:20490–20494.
  41. Chin, J., and M.J. Kostura. 1993. Dissociation of IL-1 $\beta$  synthesis and secretion in human blood monocytes stimulated with bacterial cell wall products. *J. Immunol.* 151:5574–5585.
  42. Borsch-Haubold, A.G., S. Pasquet, and S.P. Watson. 1998. Direct inhibition of cyclooxygenase-1 and -2 by the kinase inhibitors SB203580 and PD98059. *J. Biol. Chem.* 273:28766–28772.
  43. Kalmes, A., J. Deou, A.W. Clowes, and G. Daum. 1999. Raf-1 is activated by the p38 mitogen-activated protein kinase inhibitor, SB203580. *FEBS Lett.* 444:71–74.
  44. Roach, M.L., J.L. Stock, R. Byrum, B.H. Koller, and J.D. McNeish. 1995. A new embryonic stem cell line from DBA/11acJ mice allows genetic modification in a murine model of human inflammation. *Exp. Cell Res.* 221:520–525.
  45. Griffiths, R.J., M.A. Smith, M.L. Roach, J.L. Stock, E.J. Stam, A.J. Milici, D.N. Scampoli, J.D. Eskra, R.S. Byrum, B.H. Koller, and J.D. McNeish. 1997. Collagen-induced arthritis is reduced in 5-lipoxygenase-activating protein-deficient mice. *J. Exp. Med.* 185:1123–1129.
  46. Mansour, S.L., K.R. Thomas, and M.R. Capecchi. 1988. Disruption of the proto-oncogene int-2 in mouse embryo-derived stem cells: a general strategy for targeting mutations to non-selectable genes. *Nature.* 236:348–352.
  47. Mortensen, R.M., D.A. Conner, S. Chao, A.A. Geisterfer-Lowrance, and J.G. Seidman. 1992. Production of homozygous mutant ES cells with a single targeting construct. *Mol. Cell Biol.* 12:2391–2395.
  48. Hogan, B., R. Beddington, F. Costantini, and E. Lacy. 1994. *Manipulating the Mouse Embryo: A Laboratory Manual.* Cold Spring Harbor Laboratory Press, Cold Spring Harbor, NY. 487 pp.
  49. Laemmli, U.K. 1970. Cleavage of structural proteins during the assembly of the head of bacteriophage T4. *Nature.* 227:680–685.
  50. Ganiatsas, S., L. Kwee, Y. Fujiwara, A. Perkins, T. Ikeda, M.A. Labow, and L.I. Zon. 1998. SEK1 deficiency reveals mitogen-activated protein kinase cascade crossregulation and leads to abnormal hepatogenesis. *Proc. Natl. Acad. Sci. USA.* 95:6881–6886.
  51. Wiles, M.V., and G. Keller. 1991. Multiple hematopoietic lineages develop from embryonic stem (ES) cells in culture. *Development.* 111:259–267.
  52. Xia, Z., M. Dickens, J. Raingeaud, R.J. Davis, and M.E. Greenberg. 1995. Opposing effects of ERK and JNK-p38 MAP kinases on apoptosis. *Science.* 270:1326–1331.
  53. Brenner, B., U. Koppenhoefer, C. Weinstock, O. Linderkamp, F. Lang, and E. Gulbins. 1997. Fas- or ceramide-induced apoptosis is mediated by a Rac1-regulated activation of Jun N-terminal kinase/p38 kinases and GADD153. *J. Biol. Chem.* 272:22173–22181.
  54. Jacobson, M.D., M. Weil, and M.C. Raff. 1996. Role of Ced-3/ICE-family proteases in staurosporine-induced programmed cell death. *J. Cell Biol.* 133:1041–1051.
  55. Aladjem, M.I., B.T. Spike, L.W. Rodewald, T.J. Hope, M. Klemm, R. Jaenisch, and G.M. Wahl. 1998. ES cells do not activate p53-dependent stress responses and undergo p53-independent apoptosis in response to DNA damage. *Curr. Biol.* 8:145–155.
  56. Vermes, I., C. Haanen, J. Steffens-Nakken, and C. Reutelingsperger. 1995. A novel assay for apoptosis flow cytometric detection of phosphatidylserine expression on early apoptotic cells using fluorescein labelled Annexin V. *J. Immunol. Methods.* 184:39–51.
  57. Yang, D., C. Tournier, M. Wysk, H.-T. Lu, J. Xu, R.J. Davis, and R.A. Flavell. 1997. Targeted disruption of the MKK4 gene causes embryonic death, inhibition of c-Jun NH<sub>2</sub>-terminal kinase activation, and defects in AP-1 transcriptional activity. *Proc. Natl. Acad. Sci. USA.* 94:3004–3009.
  58. Maher, P. 1999. p38 mitogen-activated protein kinase activation is required for fibroblast growth factor-2-stimulated cell proliferation but not differentiation. *J. Biol. Chem.* 274:17491–17498.
  59. Hu, M.C., Y.P. Wang, A. Mikhail, W.R. Qiu, and T.-H. Tan. 1999. Murine p38- $\delta$  mitogen-activated protein kinase, a developmentally regulated protein kinase that is activated by stress and proinflammatory cytokines. *J. Biol. Chem.* 274:7095–7102.
  60. Mudgett, J.S., L. Guh-Siesel, N.A. Chartrain, L. Yang, and M. Shen. 1998. Targeted inactivation of the p38 $\alpha$  gene results in midgestation embryonic lethality. 9th International Conference of the Inflammation Research Association. P8 (Abstr.)
  61. Enslin, H., J. Raingeaud, and R.J. Davis. 1998. Selective activation of p38 mitogen-activated protein (MAP) kinase isoforms by the MAP kinase kinases MKK3 and MKK6. *J. Biol. Chem.* 273:1741–1748.
  62. Nick, J.A., N.J. Avdi, S.K. Young, L.A. Lehman, P.P. McDonald, S.C. Frasch, M.A. Billstrom, P.M. Henson, G.L. Johnson, and G.S. Worthen. 1999. Selective activation and functional significance of p38a mitogen-activated protein kinase in lipopolysaccharide-stimulated neutrophils. *J. Clin. Invest.* 103:851–858.
  63. Rausch, O., and C.J. Marshall. 1999. Cooperation of p38 and extracellular signal-regulated kinase mitogen-activated protein kinase pathways during granulocyte-stimulated factor-induced hemopoietic cell proliferation. *J. Biol. Chem.* 274:4096–4105.
  64. Zester, A., E. Gredinger, and E. Bengal. 1999. p38 mitogen-activated protein kinase pathway promotes skeletal muscle differentiation. *J. Biol. Chem.* 274:5193–5200.