

Original article

BrainTrap: a database of 3D protein expression patterns in the *Drosophila* brain

Seymour Knowles-Barley, Mark Longair and J Douglas Armstrong*

School of Informatics, The University of Edinburgh, Edinburgh, EH8 9AB, UK

*Corresponding author: Tel: +44 797 160 4838; Fax: +44 131 650 6899 Email: douglas.armstrong@ed.ac.uk

Submitted 22 December 2009; Revised 24 February 2010; Accepted 25 February 2010

Protein-trap strains of *Drosophila melanogaster* provide a very useful tool for examining the 3D-expression patterns of proteins and purification of protein complexes. Here we present BrainTrap, available at <http://fruitfly.inf.ed.ac.uk/brain-trap>, an online database of 3D confocal datasets showing reporter gene expression and protein localization in the adult brain of *Drosophila*. Full size images throughout the volume of the entire brain can be viewed interactively in a web browser. The database includes searchable annotations linked to the FlyBase *Drosophila* anatomy ontology. Anatomical search criteria can be specified using automatic completion and a hierarchical browser for the ontology. The provenance of all annotation is retained and the location where the annotator made the conclusion can be highlighted.

Database URL: <http://fruitfly.inf.ed.ac.uk/braintrap>

Introduction

The fruit fly, *Drosophila melanogaster*, is used as a model organism for genetics research and has a brain consisting of ~100 000 neurons. This is small enough for the entire brain to be scanned in 3D with a confocal microscope and sophisticated enough to produce a large range of behavior such as courtship, aggression, sleep, learning and memory.

Brain research in *Drosophila* can have important implications for humans because the molecular mechanisms underlying neuronal function are highly conserved between mammals and *Drosophila* (1). Several olfactory learning genes are found to be common to both mammals and *Drosophila*, and the behavioral effects of these genes can be measured experimentally (2,3). Out of all genes known to affect human disease as many as 77% have orthologs in *Drosophila* (4), and replacing a *Drosophila* gene with a diseased human ortholog has already proved useful in studying genetic influences on alcohol dependence, sleep disorders, Huntington's disease, and neurodegenerative diseases such as Alzheimer's disease and Parkinson's disease (5).

Protein traps

Protein expression and localization in the *Drosophila* brain is currently only known for a small subset of the *Drosophila* proteome. Common techniques for determining protein localization include antibody staining as in (6) and targeted insertion of fluorescent protein into the genome to produce *in vivo* fluorescence as in (7). Protein traps are useful tools for labeling endogenous proteins to trace their expression, sub-cellular location and for identifying their binding partners (8–10). Recent large-scale projects undertaken by several Universities aim to catalog protein-expression locations for as many proteins as possible with the use of protein-trap techniques (11,12). These projects aim to record information on all areas of the *Drosophila* anatomy, and at all stages of development. Localization information may help to determine what biological functions each protein performs, and when combined into one large dataset colocation information can be used to determine which proteins can potentially interact with each other.

BrainTrap is part of a large-scale collaborative research project to collect expression location information for as

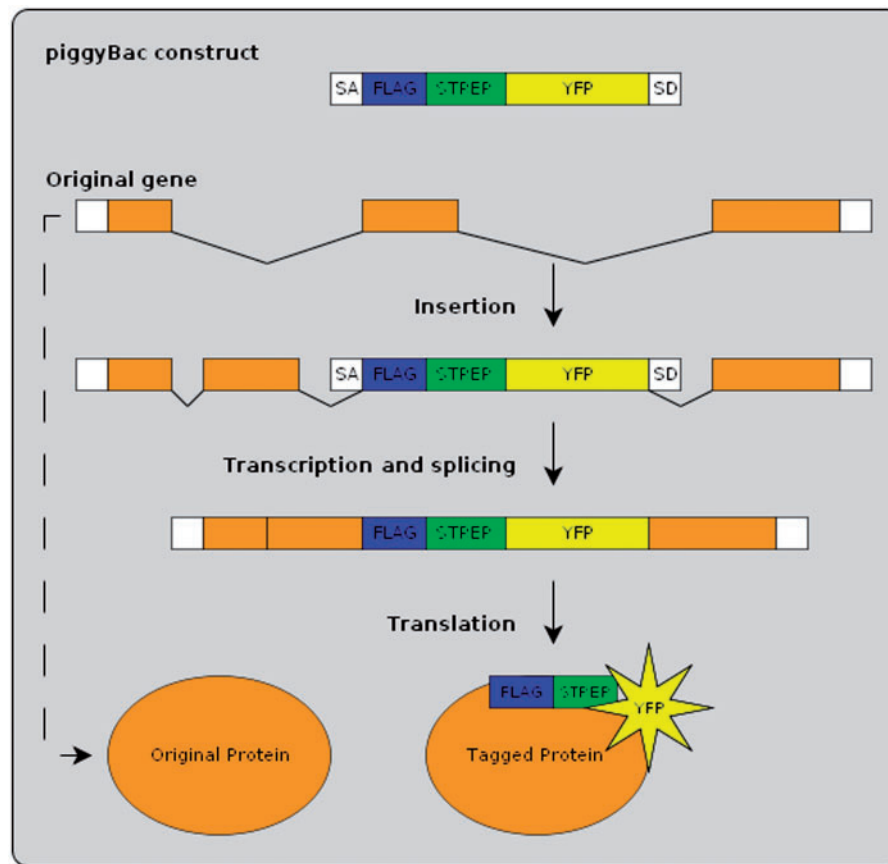


Figure 1. Protein-trap insertion using the piggyBac method. An artificial exon is inserted into the genome at random locations. When inserted within an intron of an existing gene the resulting tagged protein produces *in vivo* fluorescence.

many proteins as possible from protein-trap lines generated by the Cambridge Protein Trap (CPT) project as described in (11). Protein-trap strains have been created using the piggyBac method to insert an EYFP construct, combined with StrepII and FLAG purification epitopes, at random locations in the genome (Figure 1). A consortium of research groups are systematically analyzing the same strains and releasing both the annotations and the strains simultaneously. The first 100 strains, already available from the Kyoto Stock Center, are currently listed on the BrainTrap website with the next batches already prepared.

Existing databases

Drosophila gene and protein-expression databases are generally limited to 2D-exemplar images or short movies of 3D datasets. Examples include www.fly-trap.org, which databases GAL4 enhancer trap expression patterns in the *Drosophila* brain and provides 3D-expression data the form of quicktime movies. Protein-trap databases include www.flyprot.org (part of the CPT project) and fly-trap.med.yale.edu, both of which present annotated images of fluorescent protein-trap lines provided by a consortium of labs. However only 2D images are available and

brain images are not provided. For the brain, with its detailed 3D architecture, there is a need for more interactive exploration tools and annotation.

Many large-scale genetic screens such as the CPT project are ongoing and the amount of data collected by imaging techniques is difficult to manage. Good database design and access to information is becoming increasingly important for efficient data sharing and communication within the *Drosophila* neurobiology community and also in the wider fields of genetics and neuroscience. BrainTrap provides one example of how to address these problems by allowing fast access to relevant information by target data annotation and search over a web interface.

BrainTrap website

BrainTrap displays the 3D dataset on the website with a slice-by-slice viewing interface, similar to those found in desktop applications. It allows the user to choose a range of different viewing sizes and browse quickly to their area of interest. In addition to the EYFP signal from the protein trap itself, the database also includes a secondary immunohistochemical label (anti-brp) that aids navigation and

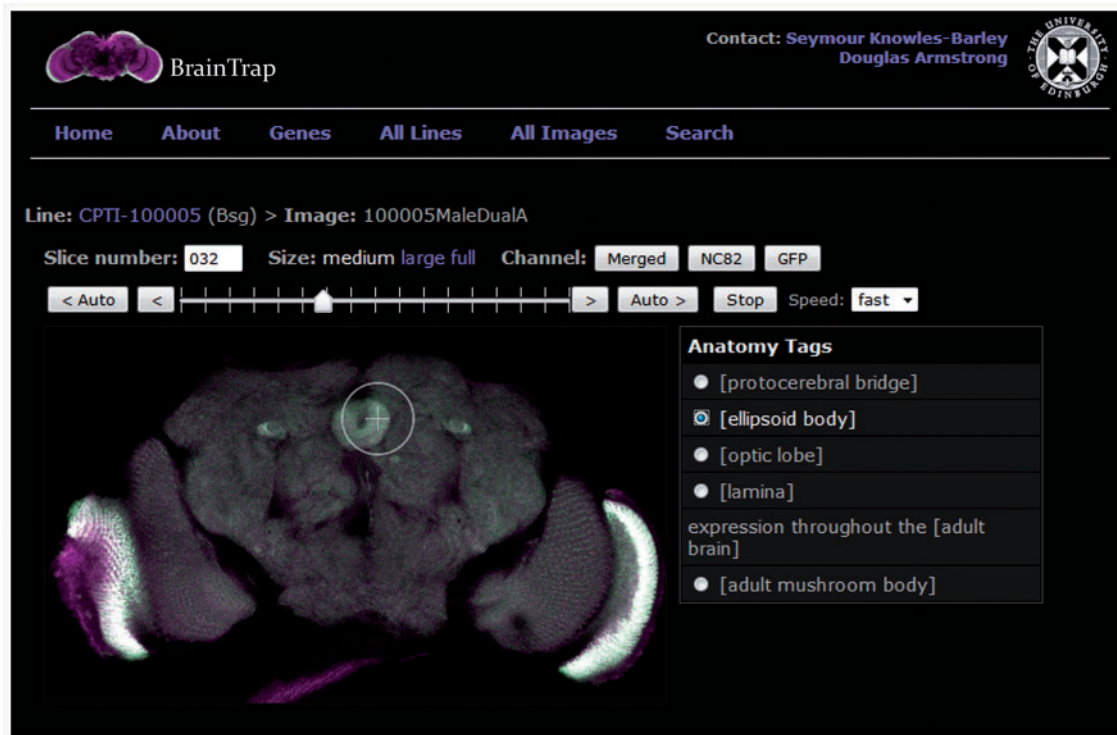


Figure 2. Brain viewer on the BrainTrap website allows the user to browse through the 3D image stack as they would on a normal desktop application. The viewing window size and visible channels can be modified as required. Shortcut buttons are also provided on the right to jump to tagged areas of expression. In this figure the ellipsoid body shortcut has been selected and expression in the ellipsoid body is highlighted. The EYFP signal is displayed in green and merged with the background signal (anti-brp) displayed in magenta. Channel buttons allow the user to choose which channels are visible.

helps identify brain structures. Further information on the staining protocol is included in the supplementary information.

Interactive online viewer

The BrainTrap Website, <http://fruitfly.inf.ed.ac.uk/braintrap>, displays images in an online viewer that allows interactive browsing of all image stacks (Figure 2). Two dimensional images from the 3D stack are displayed in the viewing area and a stack slider and auto buttons allow navigation within the stack slices. Other viewing controls allow image size enlargement up to 100% image size, and control of the visible signal channel(s). The interface is similar to that provided by desktop stack viewing tools. To the right of the image a list of annotated anatomical regions appears. Clicking on an annotation from the list automatically moves the stack to the corresponding slice and highlights the area of expression (Figure 2). In addition to the online viewer, confocal dataset files can be downloaded in the original format.

Annotation

Annotations have been made against the FlyBase *Drosophila* anatomical ontology (13). Selected annotators

can log in and add new annotations using the same interactive web interface with ontology term and synonym auto completion to help the annotator use the ontology even if they are not familiar it. Free text annotation and ontology terms can be combined to provide additional information. The provenance of all annotations is retained in the database and, where possible, annotations are linked to a 3D location in the volume showing the area of expression. Annotation data for each CPT line can be downloaded in extensible markup language (XML) format, or summarized in a gene comparison table (similar to Table 2) for a subset of selected genes.

Search

BrainTrap takes advantage of the ontology structure used for annotations by providing a fast ontology driven search page. An anatomical search query can be specified on the web form shown in Figure 3. Areas can be easily specified by browsing the ontology tree (shown on the left) or by typing the area name or synonym into the search box. Matching ontology terms are suggested as the user types. Search results are shown in a preview format (Figure 4).

Each protein-trap line is summarized in a single page showing previews of all confocal brain scans in the

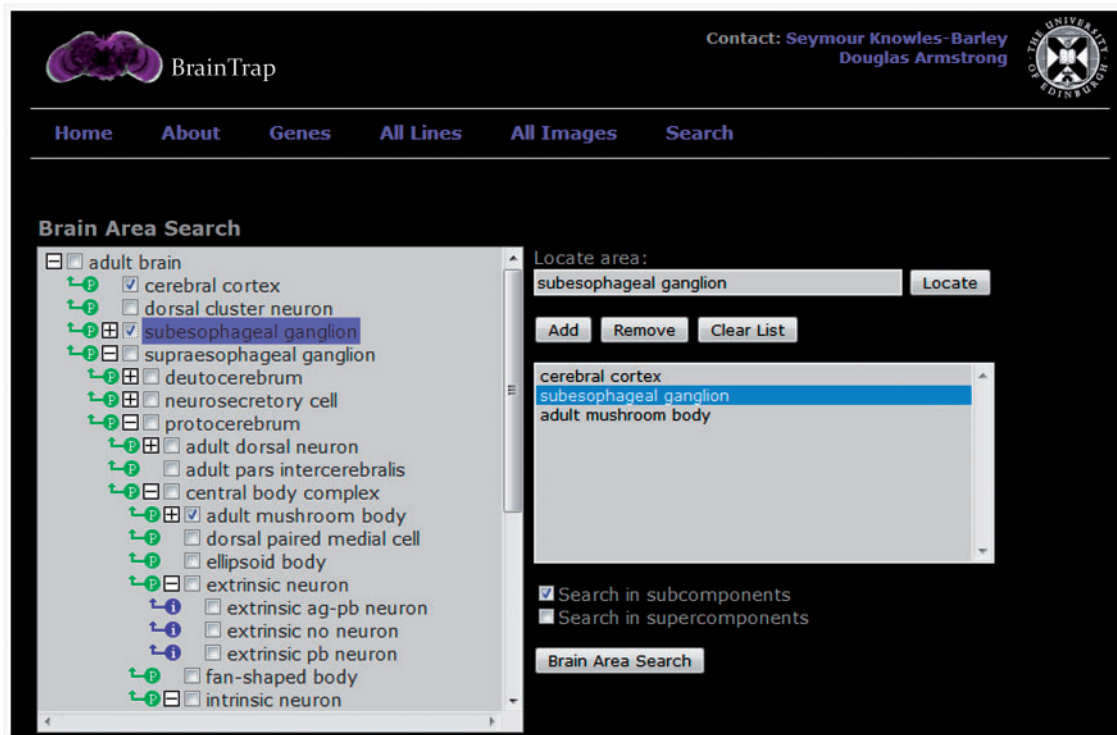


Figure 3. The ontology search form on the BrainTrap website allows users to search for protein-trap lines and images based on anatomical areas of expression. The search specified here looks for protein trap lines with expression in the cerebral cortex, the subesophageal ganglion or the adult mushroom bodies.

Preview	Name	Line	Gene	Tags	
	100012MaleDualE	CPTI-100012	CG1648	[cerebral cortex] [subesophageal ganglion] [antennal lobe] [fan-shaped neuron] (upper reg...	View
	100012MaleDualF	CPTI-100012	CG1648	[cerebral cortex] [antennal lobe] upper region of the [fan-shape... [subesophageal ganglion]	View
	100034MaleDualC	CPTI-100034	14-3-3epsilon	[cerebral cortex] [fan-shaped body] [ellipsoid body] [mushroom body]	View
	100036MaleDualC	CPTI-100036	zip	[optic neuropil] [cerebral cortex]	View
	100036MaleDualD	CPTI-100036	zip	[cerebral cortex] [optic neuropil] [subesophageal ganglion]	View
	207MaleDualB	CPTI-000207	dlg1	[mushroom body] [calyx of mushroom body] [protocerebral bridge] [cerebral cortex] [optic neuropil] [alpha-lobe] [alpha'-lobe] lateral horn [medial branch of mushroom bod...	View

Figure 4. Search results for the brain area search specified in Figure 3. Details of the matching lines are listed along with a preview brain image and a summary of the anatomical areas where expression has been noted.

Line details

Name: CPTI-000207

Comments:

Links: [Flyprot](#) | [Kyoto Stock Center \(listing pending\)](#)

Genes trapped:

Gene name	Gene ID
dlg1	CG1725 Flybase

Images:

Figure 5. The protein trap line details page provides a summary of all images in the database along with links to FlyProt, for information on other anatomical regions, the Kyoto Stock Center and to FlyBase for further information on the trapped protein. This figure shows the line summary page for *dlg1*.

database (Figure 5). External links are provided to additional gene details (FlyBase), to further protein-trap images from other anatomical areas (FlyProt), and to the Kyoto Stock Center where all lines are available to the research community. Reciprocal links are under negotiation.

Results

Figure 6 shows images from the database showing different protein-expression patterns. Many different expressions are present in the database and it is possible to measure sub-cellular localization of proteins. For example, Figure 7 shows synaptic localization in the calyx of the mushroom body for protein *dlg1*.

Using the annotation data from the first 100 lines some functional interactions in the adult brain can potentially be ruled out. Figure 8 shows interaction data from the *Drosophila* Interactions Database (DroiD) (14) between proteins in the BrainTrap database. Most proteins with potential interactions are expressed in similar locations, but the two proteins highlighted in yellow, CG6854 and *Zasp52*, do not express in the same location as some of their potentially interacting partners, so these protein interactions may

not occur in the brain. Localization for these proteins is summarized in Table 1.

Several proteins are expressed preferentially in particular areas of the brain. The combination of different proteins expressed in a specific area can provide insight into the properties of that region and how it compares to other regions. For example, heightened localization of synaptic proteins in one region indicates specificity of synapses varies with brain region and presumably function within that region (15). Selected brain regions and proteins preferentially expressed in each are shown in Table 2.

It is important to note that protein-trap insertion may produce phenotypes. Protein-expression levels and protein function may be changed and this can potentially have an effect on development or protein localization. In most cases heterozygous lines are used because some protein trap lines are homozygous lethal. For genes that have multiple transcripts the protein-trap insertion will sometimes trap a subset of the possible isoforms, so care must be taken to verify which isoforms have been trapped. This may be considered an advantage or disadvantage depending on the intended use of the protein trap line. Western blot analysis to verify the isoforms trapped by each CPT line is ongoing

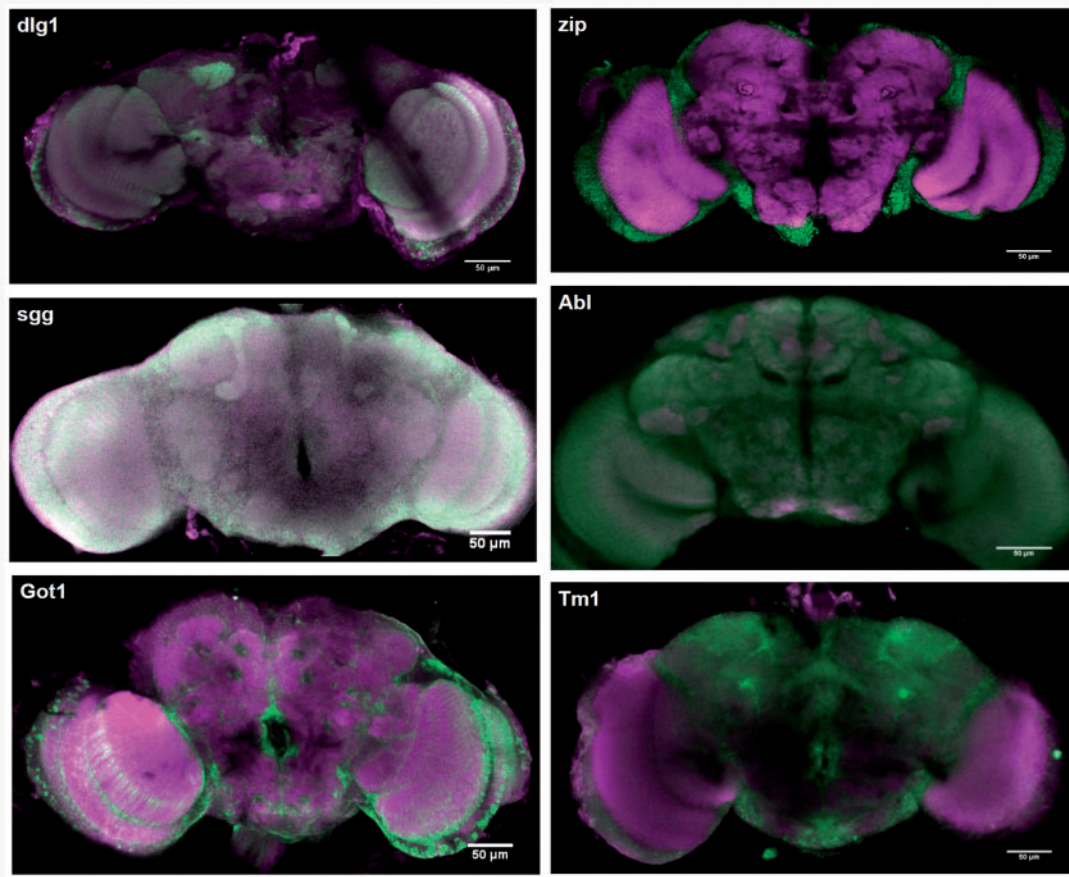


Figure 6. Protein expression for *sgg*, *dlg1*, *Got1*, *zip*, *Abl*, *Tm1*. Green signal shows expression of the trapped protein, magenta signal shows the background antibody signal (anti-brp). Green and magenta channels are merged so that regions with both trapped protein signal and background signal appear white or different colours according to the relative signal intensities.

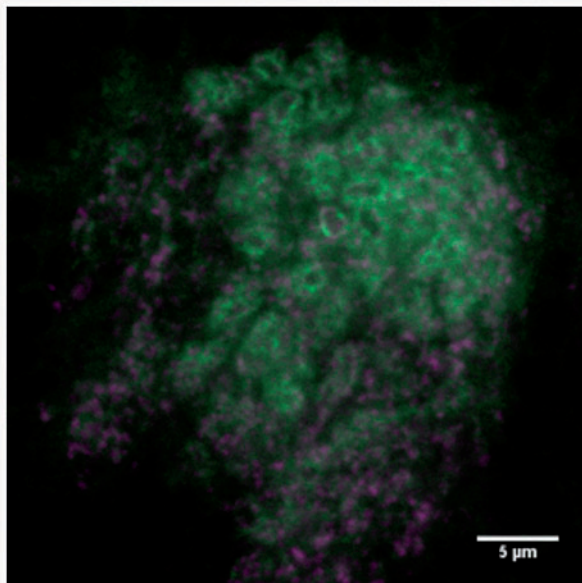


Figure 7. Sub-cellular localization. Green signal shows *dlg1* localizing at synapses in the calyx of the mushroom body. Magenta shows pre-synaptic staining (anti-brp).

as part of the CPT project. These results and further details on specific lines are available on the FlyProt website.

Discussion

BrainTrap allows fast access to a large set of information; there are currently 100 lines and 187 3D datasets. A wide variety of expression patterns are observed within these 100 proteins. Areas or proteins of interest can be identified quickly with a simple search query and desired images can be accessed in a few mouse clicks.

Large-scale biological screens, such as the CPT Project, create huge amounts of raw data. Fast access to targeted information within this raw data is very important for the field of biological and brain science as large-scale screens continue to grow in size. Structured databasing and annotation of the raw information also allows further analysis to extract useful information from the large data sets.

The BrainTrap database will continue to grow as further CPT lines are released, providing a valuable resource for biology and brain research. Currently there are 100 lines

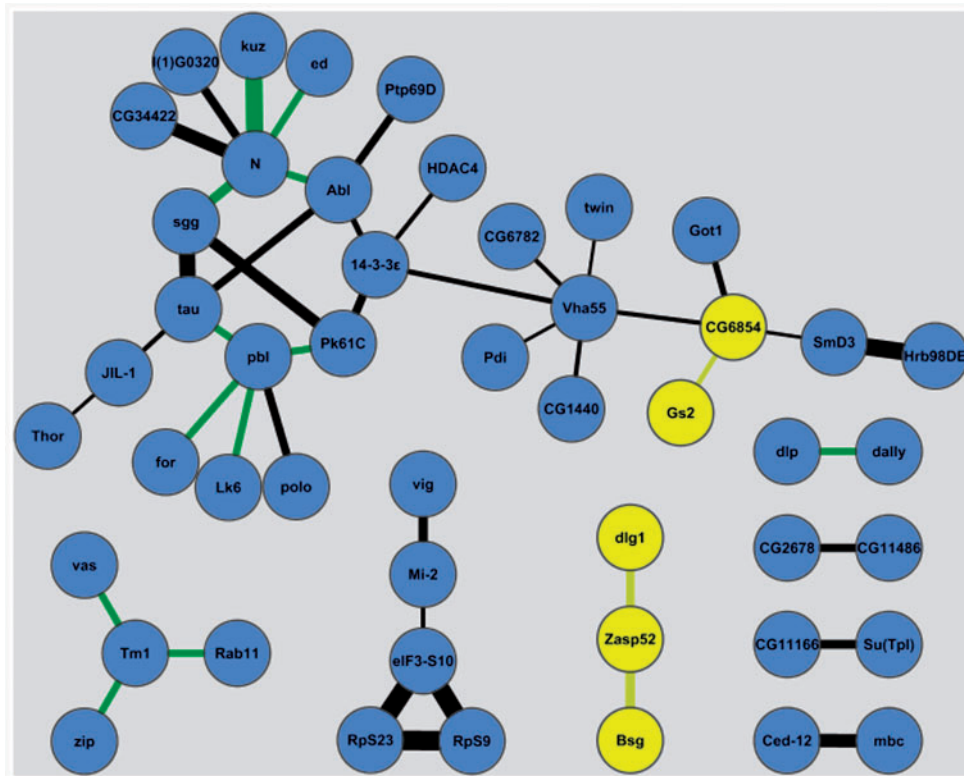


Figure 8. Potential interactions between proteins in the BrainTrap database. Proteins that do not co-express in the BrainTrap data are highlighted in yellow. Line thickness represents the confidence of protein interaction, green lines are genetic interactions. Interaction data is from the DroID database (14).

Table 1. Potentially interacting proteins not coexpressed in the brain

Protein 1	Areas of expression		Protein 2	Areas of expression
<i>dlg1</i>	cerebral cortex antennal lobe optic neuropil mushroom body protocerebral bridge lateral horn	⇔	CG30084	little or no expression
<i>Bsg</i>	brain protocerebral bridge mushroom body ellipsoid body optic lobe lamina	⇔	Zasp52	little or no expression
<i>Gs2</i>	subesophageal ganglion	⇔	CG6854	cerebral cortex

available online with a further 400 pending and work is ongoing to scan and annotate these images. All scans will be made available on BrainTrap as they are released by the consortium (16). With more lines added to the database

better interaction analysis will be possible as genome coverage is improved. In future brain images will be mapped to a template so that protein-expression patterns can be compared directly between different protein-trap lines.

Table 2. Proteins showing heightened localization in specific brain areas

	14-3-3-ε	Bsg	daily	dlg1	dlp	Fas3	Got1	Gs2	ia2l	CG2678	nrv1	Rp523l fs(1)K10	Sema-1a	sgg	Mi-2	Su(Tp1)	tau	Tm1	Vha55	zip	CG1648	CG17839	CG31352	CG5830	CG6782/ CG6783	CG9338
Mushroom body	•	•	•	•	•	•	•	•	•	•	•	•	•	•	•	•	•	•	•	•	•	•	•	•	•	•
Fan-shaped body	•	•	•	•	•	•	•	•	•	•	•	•	•	•	•	•	•	•	•	•	•	•	•	•	•	•
Ellipsoid body	•	•	•	•	•	•	•	•	•	•	•	•	•	•	•	•	•	•	•	•	•	•	•	•	•	•
Optic lobe	•	•	•	•	•	•	•	•	•	•	•	•	•	•	•	•	•	•	•	•	•	•	•	•	•	•
Antennal lobe	•	•	•	•	•	•	•	•	•	•	•	•	•	•	•	•	•	•	•	•	•	•	•	•	•	•
Subesophageal ganglion	•	•	•	•	•	•	•	•	•	•	•	•	•	•	•	•	•	•	•	•	•	•	•	•	•	•

This will enable new types of comparative analysis and visualization to be performed on the website.

Funding

Funding from Engineering and Physical Sciences Research Council (EPSRC), Medical Research Council, Biotechnology and Biological Sciences Research Council (BBSRC), British society for Developmental Biology, Society for Experimental Biology and the Virtual Fly Brain e-Science Institute (ESI) Theme. Fly lines generated by the Cambridge Protein Trap Project (11), supported by a Wellcome Trust grant to Kathryn Lilley, Steve Russell and Daniel St. Johnson and further details are available at <http://www.flyprot.org>. Funding for open access charge: Engineering and Physical Sciences Research Council and Biotechnology and Biological Sciences Research Council.

Conflict of interest. None declared.

References

- Yoshihara, M., Ensminger, A.W. and Littleton, J.T. (2001) Neurobiology and the *Drosophila* genome. *Func. Integrative Genomics*, **1**, 235–240.
- Xia, S., Miyashita, T., Fu, T.F. et al. (2005) NMDA receptors mediate olfactory learning and memory in *Drosophila*. *Curr. Biol.*, **15**, 603–615.
- Davis, R.L. (2005) Olfactory memory formation in *Drosophila*: from molecular to systems neuroscience. *Annu. Rev. Neurosci.*, **28**, 275–302.
- Fortini, M.E., Skupski, M.P., Boguski, M.S. et al. (2000) A survey of human disease gene counterparts in the *Drosophila* genome. *J. Cell Biol.*, **150**, 23–30.
- Mackay, T.F. and Anholt, R.R. (2006) Of flies and man: *Drosophila* as a model for human complex traits. *Annu. Rev. Genomics Hum. Genet.*, **7**, 339–367.
- Parnas, D., Haghghi, P.A., Fetter, R.D. et al. (2001) Regulation of postsynaptic structure and protein localization by the rho-type guanine nucleotide exchange factor dPix. *Neuron*, **32**, 415–424.
- Maier, D., Hausser, A., Nagel, A.C. et al. (2006) *Drosophila* protein kinase D is broadly expressed and a fraction localizes to the Golgi compartment. *Gene Exp. Patterns*, **6**, 849–856.
- Morin, X., Daneman, R., Zavortink, M. et al. (2001) A protein trap strategy to detect GFP-tagged proteins expressed from their endogenous loci in *Drosophila*. *Proc. Natl Acad. Sci. USA*, **98**, 15050–15055.
- Ryder, E. and Russell, S. (2003) Transposable elements as tools for genomics and genetics in *Drosophila*. *Brief Funct. Genomic Proteomic*, **2**, 57–71.
- Kelso, R.J., Buszczak, M., Quiñones, A. T. et al. (2004) Flytrap, a database documenting a GFP protein-trap insertion screen in *Drosophila melanogaster*. *Nucleic Acids Res.*, **32**, D418–D420.
- Ryder, E., Spriggs, H. and Johnson, G. (2007) Genome-wide mapping and characterisation of protein expression and interaction in *Drosophila melanogaster*, using a hybrid piggyBac/P-element YFP gene trap system with tandem affinity tags. In: Proceedings of the 48th Annual *Drosophila* Research Conference, Philadelphia, PA,

- 349, http://www.unionbiometrica.com/publications/files/RYDER_GSA2007.pdf.
12. Bellen,H.J., Levis,R.W., Liao,G. *et al.* (2004) The BDGP gene disruption project: single transposon insertions associated with 40% of *Drosophila* genes. *Genetics*, **167**, 761–781.
 13. Grumbling,G. and Strelets,V. and The FlyBase Consortium (2006) FlyBase: anatomical data, images and queries. *Nucleic Acids Res.*, **34**, D484–D488.
 14. Yu,J., Pacifico,S., Liu,G. *et al.* (2008) DroID: the *Drosophila* interactions database, a comprehensive resource for annotated gene and protein interactions. *BMC Genomics*, **9**, 461.
 15. Emes,R.D., Pocklington,A.J., Anderson,C.N.G. *et al.* (2008) Evolutionary expansion and anatomical specialization of synapse proteome complexity. *Nature Neuroscience*, **11**, 799–806.
 16. Ryder,E., Spriggs,H. and Drummond,E. (2009) The Flannotator—a gene and protein expression annotation tool for *Drosophila melanogaster*. *Bioinformatics*, **25**, 548–549.