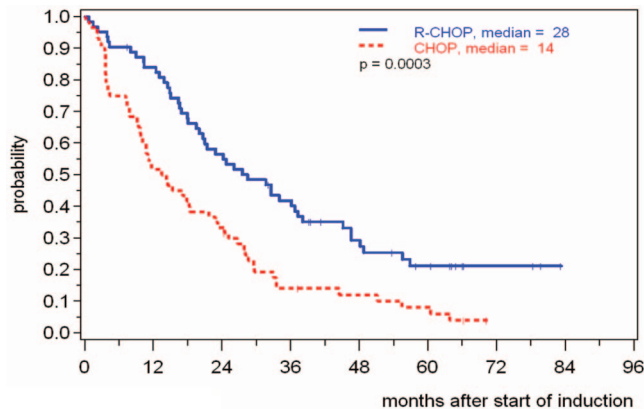
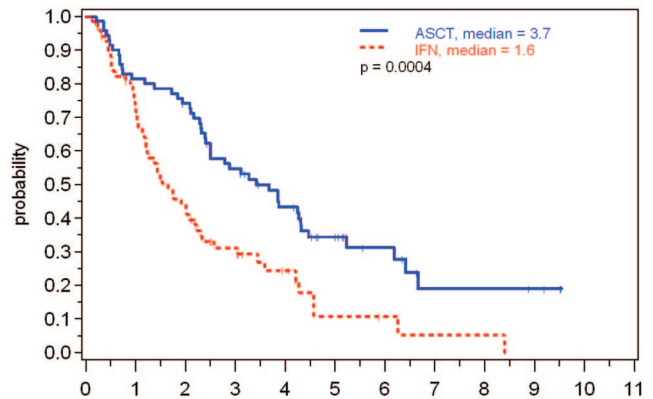


**Dreyling M, Hiddemann W; European MCL Network. Current treatment standards and emerging strategies in mantle cell lymphoma. *Hematology Am Soc Hematol Educ Program.* 2009;2009:542-551.**

On page 545 in the *Hematology 2009 Education Program Book*, the Figure 1 and Figure 2 legends are reversed. The figures with corrected legends are shown.



**Figure 1. Progression-free survival after CHOP induction ± rituximab (with optional consolidation).<sup>57</sup>**



	years after end of induction therapy									
numbers of patients at risk	0	1	2	3	4	5	6	7	8	9
ASCT	75	56	50	36	26	16	9	4	3	0
IFN	69	47	29	17	9	3	2	1	0	0

**Figure 2. Progression-free survival after a CHOP-like induction followed either by autologous stem cell transplantation (ASCT) or IFN $\alpha$  maintenance.<sup>24</sup>**

**Fielding A. The treatment of adults with acute lymphoblastic leukemia. *Hematology Am Soc Hematol Educ Program.* 2008;2008:381-389.**

On pages ix and 381 in the *Hematology 2008 Education Program Book*, the author's middle initial was omitted. The correct name is Adele K. Fielding.