

CORRECTION

Trafficking modulator TENin1 inhibits endocytosis, causes endomembrane protein accumulation at the pre-vacuolar compartment and impairs gravitropic response in *Arabidopsis thaliana*

R. Paudyal, A. Jamaluddin, J. P. Warren, S. M. Doyle, S. Robert, S. L. Warriner and A. Baker

Volume 460 (2014), pp. 177–185

Figure 3 of the above paper featured a incorrectly labelled colour key for relative intensity with white for 0 and black for 256. This should be black for 0 and white for 256 as in the corrected Figure below.

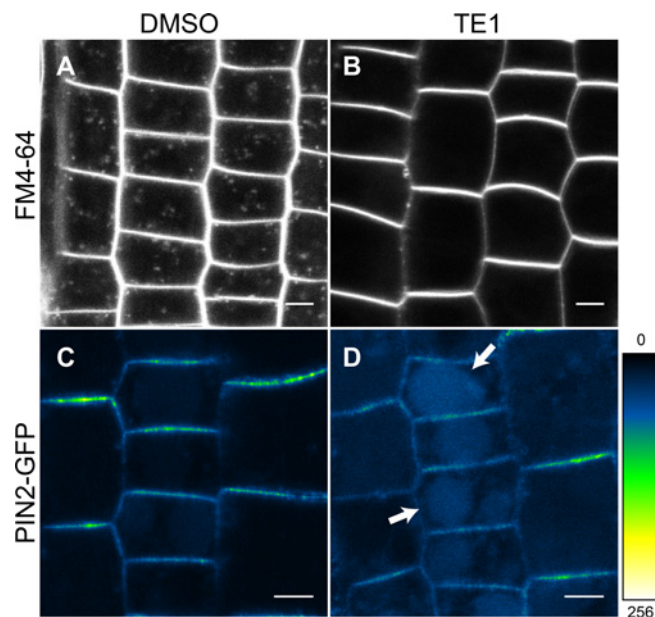


Figure 3 TE1 inhibits endocytosis and increases vacuolar labelling

Wild-type Col-0 seedlings were stained with FM4-64 and visualized after 15 min following a 120 min incubation in DMSO (**A**) and 25 μ M TE1 (**B**). (**C** and **D**) Heat map of PIN2-GFP in seedlings incubated in DMSO (**C**) and 25 μ M TE1 (**D**) for 6 h in the dark. The colour panel on the bottom right-hand side displays the relative intensity of PIN2-GFP (**C** and **D**) from 0 to 256. Scale bars, 5 μ m.