

## Research Article

# ZFPM2-AS1 facilitates cell growth in esophageal squamous cell carcinoma via up-regulating TRAF4

Gaozhong Sun and  Changhao Wu

Department of Cardio-Thoracic Surgery, Zhejiang Provincial People's Hospital, People's Hospital of Hangzhou Medical College, Hangzhou 310014, Zhejiang Province, P.R. China

**Correspondence:** Changhao Wu (sung2002@126.com)



Emerging evidence has confirmed that long noncoding RNAs (lncRNAs) are strongly involved in tumor initiation and development. LncRNA ZFPM2 antisense RNA 1 (ZFPM2-AS1) has been identified as a tumor facilitator in some cancers; nevertheless, its functional significance and regulatory mechanism remain greatly unclear in esophageal squamous cell carcinoma (ESCC). Here, we detected ZFPM2-AS1 expression in ESCC cell lines using qRT-PCR. ZFPM2-AS1 knockdown models were established for investigating the biological function of ZFPM2-AS1 in ESCC cells. The association between miR-3612 and ZFPM2-AS1 or TRAF4 was assessed by RNA pull-down and luciferase reporter assays. The present study indicated that ZFPM2-AS1 was significantly up-regulated in ESCC cells. Functional assays manifested that ZFPM2-AS1 knockdown restrained cell proliferation, migration and invasion, and facilitated cell apoptosis in ESCC. Mechanistically, ZFPM2-AS1 promoted ESCC cell growth and up-regulated TRAF4 to trigger NF- $\kappa$ B pathway by sequestering miR-3612. Besides, miR-3612 was confirmed to be a tumor inhibitor in ESCC. Through restoration experiments, we observed that TRAF4 overexpression could recover the suppressive effect of ZFPM2-AS1 on ESCC cell growth. Collectively, all the results suggested that ZFPM2-AS1 was an oncogene in ESCC cell growth by up-regulating TRAF4 and activating NF- $\kappa$ B pathway.

## Introduction

Esophageal cancer, a commonly occurred cancer, causes the increasing deaths that related to cancers worldwide [1]. Esophageal squamous cell carcinoma (ESCC) is the predominant histological type of esophageal cancer and accounts for most esophageal cancer cases [2]. Hot drinks, consumption of pickled vegetables, excessive drinking and mycotoxin-contaminated foods are all identified as risk factors that contribute to esophageal cancer [3]. In recent decades, great advances have been used in ESCC treatment; however, the clinical outcomes are still unfavorable [4]. In consequence, it is of great importance to explore the novel biomarkers and mechanisms underlying ESCC progression for identifying attractive therapeutic strategies.

Long noncoding RNAs (lncRNAs), consisting of over 200 nucleotides, are identified as a group of RNA with a limit in encoding proteins [5]. As reported, lncRNA functions as a regulator in gene expression via multiple mechanisms, such as chromatin modifications, miRNA competition, protein amounts and genomic interactions [6,7]. Existing evidence proved that lncRNAs play crucial roles in the regulation of various biological and pathological behaviors, especially in tumorigenesis and progression [8,9]. For example, lncRNA ZEB1-AS1 acts as an oncogene in glioma and promotes cancer progression [10]. LncRNA HULC promotes cell proliferation and invasion and activates PI3K/AKT pathway in pancreatic cancer [11]. Notably, a series of abnormally expressed lncRNAs are found in ESCC, and these lncRNAs are reported to be strongly associated with ESCC malignancy [12]. For instance, SNHG6 [13] and LINC01980 [14] are up-regulated in ESCC and function as tumor promoter in ESCC progression. Contrarily, GAS5 [15] and FER1L4 [16] are down-regulated in ESCC and suppress the cancer progression. LncRNA ZFPM2

Received: 16 December 2019  
 Revised: 04 February 2020  
 Accepted: 05 February 2020

Accepted Manuscript online:  
 17 February 2020  
 Version of Record published:  
 03 April 2020

antisense RNA 1 (ZFPM2-AS1) was reported to play oncogenic role in gastric cancer [17] and lung adenocarcinoma [18]. However, its expression pattern and biological function have not been elucidated in ESCC.

Here, we explored the function and molecular mechanism of ZFPM2-AS1 in ESCC, and found that ZFPM2-AS1 was expressed at a high level in ESCC and promoted ESCC cell growth by targeting miR-3612/TRAF4 axis. The present study might provide a useful theoretical basis for the understanding of potential regulatory mechanism underlying ESCC progression.

## Materials and methods

### Cell culture

Human ESCC cell lines (KYSE-140, KYSE-30, EC9706, TE-10), and human normal esophageal epithelial cell line (HET-1A), from ATCC (Rockville, Maryland), were propagated in the DMEM (Invitrogen, Carlsbad, CA) under the standard condition of 37°C and 5% CO<sub>2</sub>. The 10% FBS and 1% Pen/Strep mixture, both from Invitrogen, served as supplements for DMEM.

### Quantitative real-time PCR (qRT-PCR)

The total RNAs were extracted from the cultured cell samples with Invitrogen TRIzol reagent, then prepared for cDNA synthesis with reverse transcription kit (Thermo Fisher, Waltham, MA). Gene expression levels were monitored by qPCR with SYBR green Supermix (Thermo Fisher), then calculated with the comparative change-in-cycle method ( $\Delta\Delta Ct$ ), relative to that of GAPDH or U6.

### Transfection

The designed short hairpin RNAs (shRNAs) and control shRNA were acquired from Genepharma Company (Shanghai, China) to silence ZFPM2-AS1 with transfection kit Lipofectamine 2000 (Invitrogen). Besides, the miRNA mimics and NC mimics, along with pcDNA-TRAF4 and control pcDNA3.1 vector, all were also obtained from Genepharma Company. At 48 h post-transfection, cell samples were reaped.

### EdU assay

EC9706 and TE-10 cells were transfected as study designed, then seeded on sterile coverslips in the 24-well plates. EdU assay kit from Ribobio (Guangzhou, China) was employed for detecting proliferative cells as per the protocol. Nuclei were double stained with EdU and DAPI dye, followed by analysis with fluorescence microscope (Olympus, Tokyo, Japan).

### TUNEL assay

Transfected cells in 2% formaldehyde were reaped and permeabilized on ice with 0.1% Triton X-100. Samples were then incubated under 37°C with TUNEL reaction buffer as required by protocol of TUNEL assay kit (Beyotime, Shanghai, China). One hour later, fluorescence microscope was used.

### Wound-healing

For the scratch wound-healing assay, cell samples were seeded in serum-free medium for 24 h, and then wounded by pipette tips. The culture medium was then refreshed. Distance of wound healing was monitored at 0 and 24 h, images were taken.

### Transwell invasion assay

Matrigel-coated transwell chamber was available from Corning Co. (Corning, NY) for cell invasion assay. Cell samples were seeded in the serum-free culture medium before plating in the upper chamber, while complete culture medium was added to the lower chamber. Invasive cell samples on the bottom were fixed by 4% paraformaldehyde 24 h later, and treated with Crystal Violet dye, then observed under microscope.

### FISH

The specific FISH-probe of ZFPM2-AS1 was synthesized by Ribobio. Fixed cell samples were rinsed in PBS and dehydrated, then cultured with probe in the hybridization solution overnight at 42°C. At least, DAPI staining and fluorescence analysis were severally conducted.

## RNA immunoprecipitation (RIP)

Cell extracts were collected from RIP lysis buffer for incubation for 4 h in RIP buffer adding the magnetic beads coated human Ago2 antibody or control IgG antibody (Abcam, Cambridge, MA). After elution, precipitated RNAs were extracted and analyzed.

## Luciferase reporter assay

293T cells (ATCC) were used to co-transfected with the pmirGLO dual-luciferase vector (Promega Corporation, Madison, WI) containing the ZFPM2-AS1 sequences and various miRNA mimics and NC mimics. Besides, the wild-type and mutated ZFPM2-AS1 or TRAF4 fragments covering the miR-3612 binding sites were inserted to pmirGLO vector, termed ZFPM2-AS1-WT/MUT and TRAF4-WT/MUT. They were co-transfected into ESCC cell samples with miR-3612 mimics or NC mimics for 48 h, then assayed via luciferase reporter assay system (Promega).

## RNA pull down assay

The wild-type and mutated miR-3612 sequences covering ZFPM2-AS1 or TRAF4 binding sites were acquired and biotin-labeled into Biotin-miR-3612 WT/MUT. Then they were mixed with the protein extracts from ESCC cell samples and magnetic beads. The retrieved RNA enrichment was assayed.

## Statistical analyses

Averaged replicates of three independent assays were required in the present study, and data were displayed with mean  $\pm$  Standard Deviation (S.D.). PRISM 6 (GraphPad, San Diego, CA) was utilized for statistical analyses by one-way ANOVA and Student's *t*-test, with significant values specified as  $P < 0.05$ .

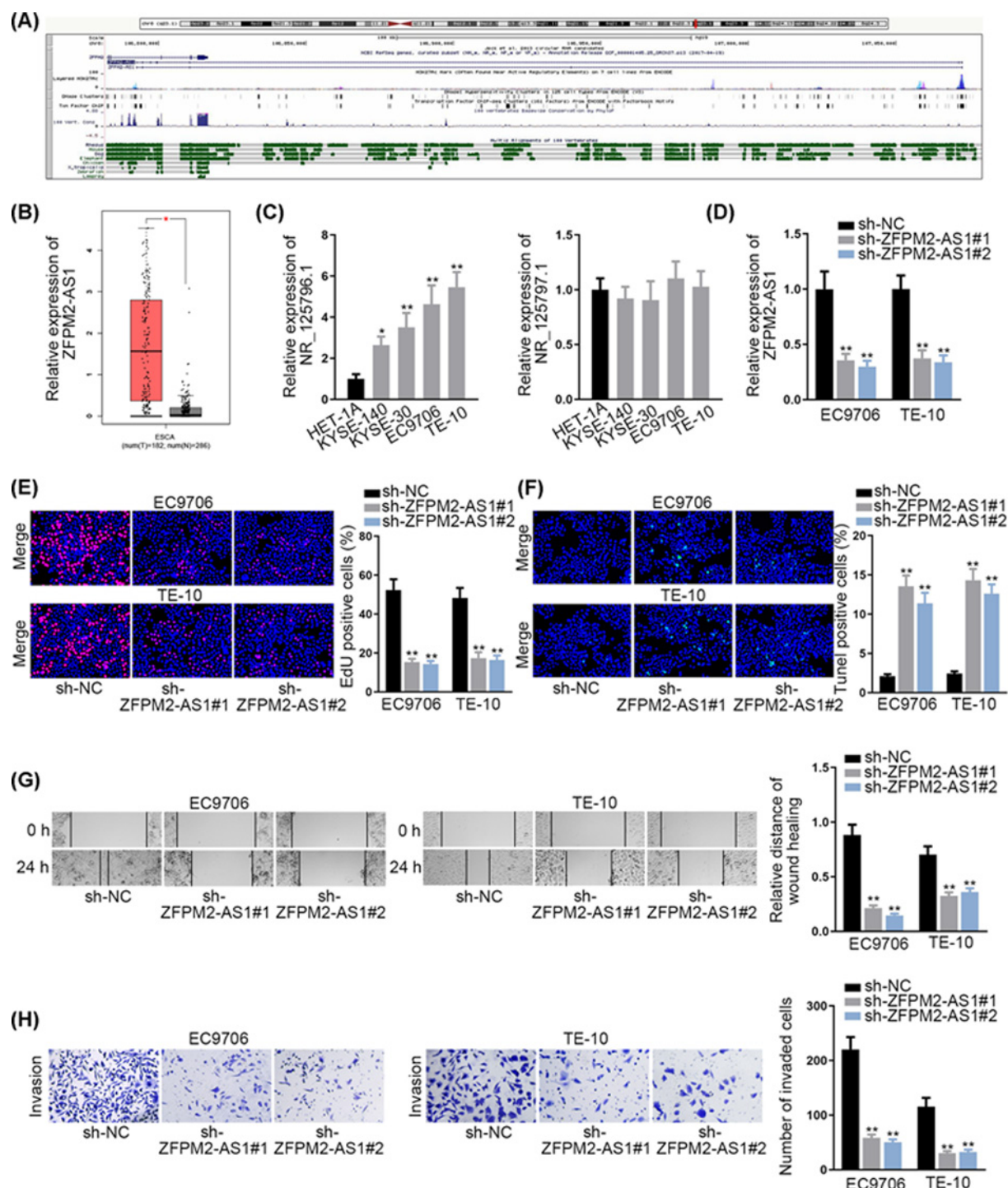
## Results

### ZFPM2-AS1 is overexpressed in ESCC and promotes ESCC cell growth

To explore the expression pattern of ZFPM2-AS1 in ESCC, we first searched UCSC (<http://genome.ucsc.edu/>) database, and two transcripts were found in the genome of ZFPM2-AS1 (Figure 1A). Later, it was discovered that ZFPM2-AS1 was expressed at a high level in esophageal carcinoma tissues (Figure 1B). Further, we detected the expressions of two transcripts (NR\_125796.1 and NR\_125797.1) of ZFPM2-AS1 in ESCC cell lines (KYSE-140, KYSE-30, EC9706 and TE-10), and human normal esophageal epithelial cell line (HET-1A) was taken as a reference. The results showed that NR\_125796.1 was remarkably up-regulated in ESCC cell lines, particularly in EC9706 and TE-10 cells; whereas NR\_125797.1 presented no significant difference (Figure 1C). Therefore, NR\_125796.1 in ZFPM2-AS1 genome was used for the follow-up studies. To explore the function of ZFPM2-AS1 on ESCC cell growth, two specific ZFPM2-AS1 shRNAs (sh-ZFPM2-AS1#1 and sh-ZFPM2-AS1#2, both for NR\_125796.1) were used for stably silencing ZFPM2-AS1 expression in EC9706 and TE-10 cells (Figure 1D). Through EdU assay, we observed that the proliferative capacity of EC9706 and TE-10 cells was markedly restrained upon ZFPM2-AS1 knockdown (Figure 1E). In TUNEL assay, the depletion of ZFPM2-AS1 substantially promoted the apoptosis in EC9706 and TE-10 cells (Figure 1F). Furthermore, wound healing assay manifested that cell migration was obviously inhibited in sh-ZFPM2-AS1 transfected cells (Figure 1G). Subsequently, the invaded cells in sh-ZFPM2-AS1 group were validated to be fewer than in sh-NC group via transwell assay (Figure 1H). Besides, we knocked NR\_125797.1 down and identified that silenced NR\_125797.1 had no effects on ESCC cell proliferation, apoptosis, migration and invasion (Supplementary Figure S1A–C). These findings suggested that ZFPM2-AS1 (NR\_125796.1 but not NR\_125797.1) is overexpressed in ESCC and promotes ESCC cell growth.

### MiR-3612 is sponged by ZFPM2-AS1 and serves as a tumor suppressor in ESCC

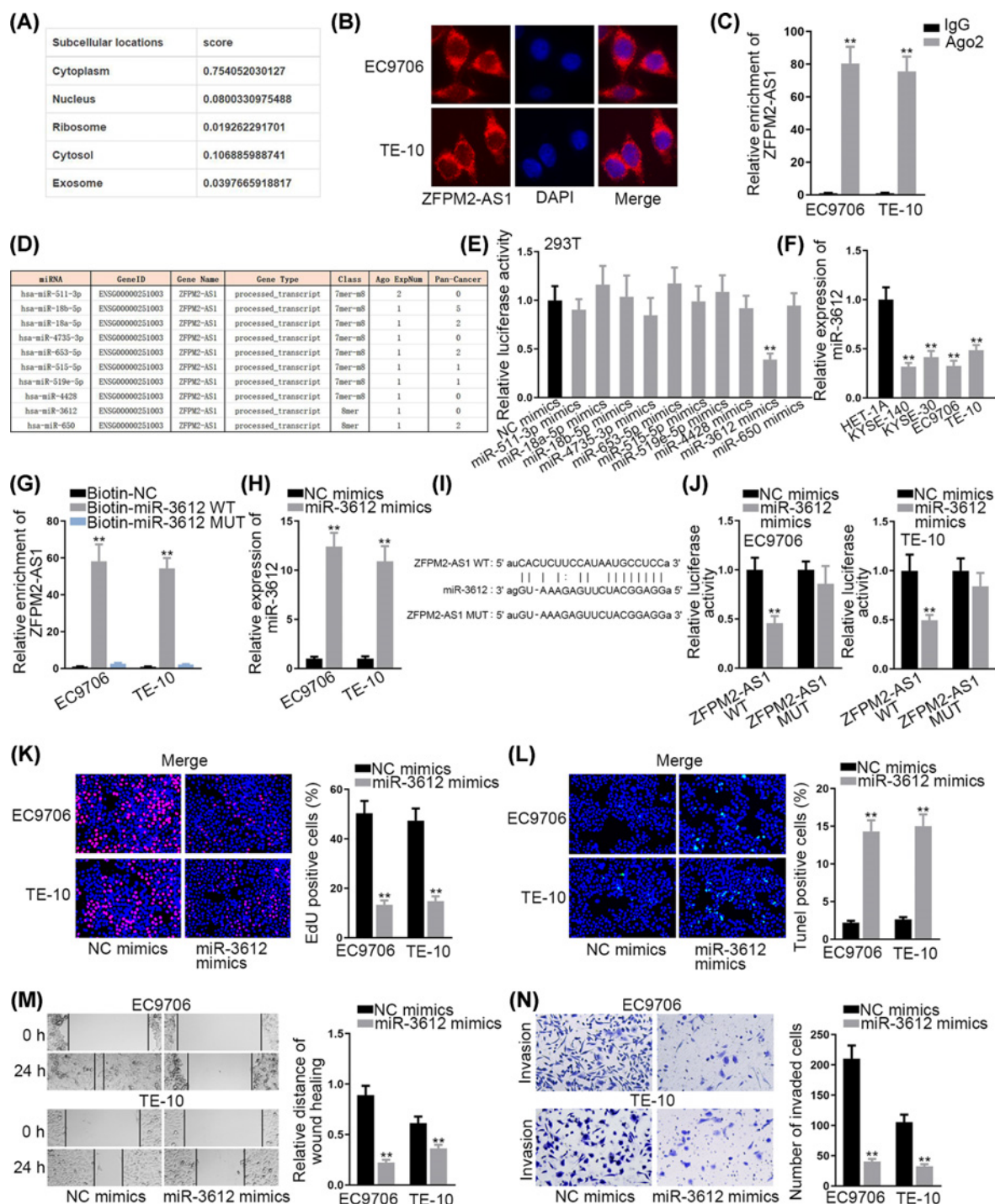
A variety of reports have pointed out that lncRNAs could sponge miRNAs by acting as competitive endogenous RNAs (ceRNAs) at post-transcriptional level [19]. To elucidate potential ZFPM2-AS1 mechanism, lncLocator (<http://www.csbio.sjtu.edu.cn/bioinf/lncLocator/>) [20] was searched and we found that ZFPM2-AS1 was primarily located in the cytoplasm (Figure 2A), which was consistent with the results of subcellular fractionation assay (Figure 2B). This result suggested that ZFPM2-AS1 might exert its function as a ceRNA. To test our hypothesis, RIP assay was carried out and results indicated that ZFPM2-AS1 could enrich in the beads conjugated with Ago2 antibody (Figure 2C), providing the evidence for ceRNA hypothesis. Using starBase (<http://starbase.sysu.edu.cn/index.php>) [21], 10 potential miRNAs sponged by ZFPM2-AS1 were predicted (Figure 2D). Among these miRNAs, miR-3612 was found



**Figure 1. ZFPM2-AS1 is overexpressed in ESCC and promotes ESCC cell growth**

(A) ZFPM2-AS1 in UCSC database. (B) ZFPM2-AS1 expression in ESCC tissues through GEPIA. (C) Expressions of two transcripts of ZFPM2-AS1 in ESCC cell lines (KYSE-140, KYSE-30, EC9706 and TE-10) and human normal esophageal epithelial cell line (HET-1A). (D) Transfection efficiency of sh-ZFPM2-AS1 (for NR.125796.1). (E) Cell proliferation was detected by EdU assay upon ZFPM2-AS1 knockdown. (F) TUNEL assay was used for assessing the apoptosis in ZFPM2-AS1 silenced cells. (G and H) Cell migration and invasion in sh-ZFPM2-AS1 transfected cells were evaluated by wound healing and transwell assays; \* $P < 0.05$ , \*\* $P < 0.01$ .





**Figure 2. MiR-3612 is sponged by ZFPM2-AS1 and serves as a tumor suppressor in ESCC**

(A) The subcellular distribution of ZFPM2-AS1 from IncLocator database. (B) FISH assay was conducted to determine ZFPM2-AS1 localization. (C) RIP assay was performed for confirming the involvement of ZFPM2-AS1 in RISC. (D) Predicted miRNAs for ZFPM2-AS1. (E) Luciferase reporter assay was carried out to validate the interaction between ZFPM2-AS1 and predicted miRNAs. (F) MiR-3612 expression in ESCC cells and HET-1A cell. (G) RNA pull down assay was employed for detecting the combination between ZFPM2-AS1 and miR-3612. (H) MiR-3612 expression was detected in cells transfected with miR-3612 mimics. (I) Binding site between ZFPM2-AS1 and miR-3612 was showed. (J) Luciferase activity of ZFPM2-AS1-WT or ZFPM2-AS1-MUT was estimated in ESCC cells with the transfection of miR-3612 mimics or NC mimics. (K) Effect of miR-3612 mimics on cell proliferation. (L) Cell apoptosis was assessed by TUNEL assay after the transfection of miR-3612 mimics. (M and N) Wound healing and transwell assays were utilized for determining the effect of miR-3612 overexpression on cell migration and invasion; \*\* $P < 0.01$ .

to significantly suppress the luciferase activity of the vectors containing ZFPM2-AS1 sequence (Figure 2E). Therefore, miR-3612 was chosen for the following exploration. Then, miR-3612 expression level in ESCC cells and normal esophageal epithelial cell line (HET-1A) was detected. Compared with HET-1A cell line, miR-3612 was lowly expressed in ESCC cells (Figure 2F). RNA pull-down assay showed that ZFPM2-AS1 was pulled down by biotinylated miR-3612-WT (Figure 2G). In addition, we overexpressed miR-3612 in EC9706 and TE-10 cells (Figure 2H). The binding site between miR-3612 and ZFPM2-AS1 was illustrated in Figure 2I. Results of luciferase reporter assay displayed that the overexpression of miR-3612 markedly lessened the luciferase activity of ZFPM2-AS1-WT reporter in EC9706 and TE-10 cells while such effect was not exerted on ZFPM2-AS1-Mut reporter (Figure 2J). Subsequently, we investigated the biological effect of miR-3612 on ESCC cell growth. It was observed that miR-3612 overexpression suppressed the proliferation of EC9706 and TE-10 cells (Figure 2K). The apoptosis of ESCC cells was enhanced with the transfection of miR-3612 mimics (Figure 2L). Furthermore, the migratory and invasive capacities were both hampered in miR-3612 overexpressed ESCC cells (Figure 2M,N). Taken all together, miR-3612 is sponged by ZFPM2-AS1 and serves as a tumor suppressor in ESCC.

## TRAF4 is a target gene of miR-3612

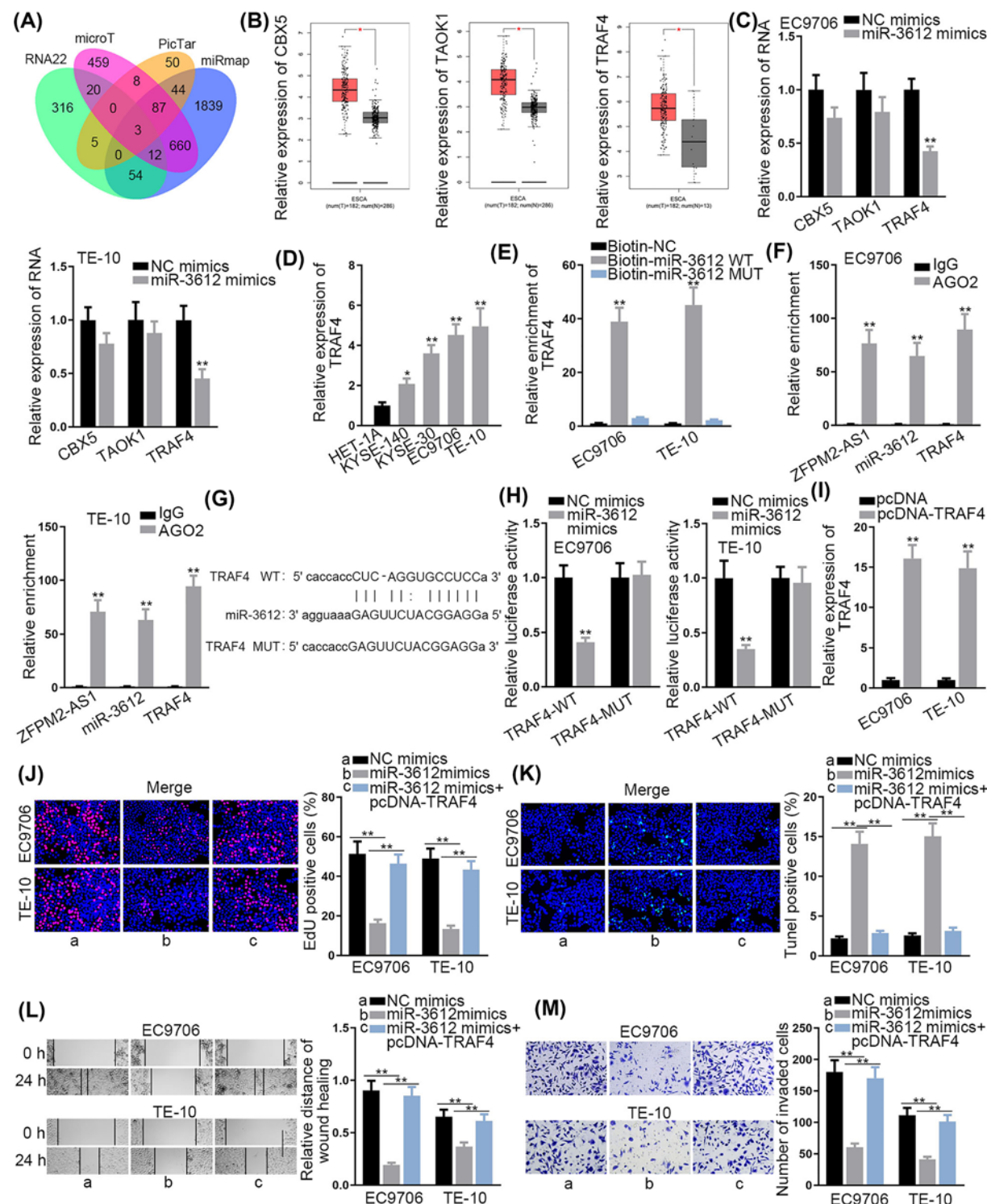
To further support ceRNA hypothesis, we explored the target gene of miR-3612. Online target exploratory software tools (RNA22, microT, PicTar and miRmap) were utilized to search the potential targets for miR-3612, and 3 candidates were screened out (Figure 3A). Through GEPIA database (<http://gepia.cancer-pku.cn/>), we found that these 3 mRNAs (CBX5, TAOK1 and TRAF4) were all up-regulated in esophageal carcinoma tissues (Figure 3B). Then, their expression levels were detected in the cells transfected with miR-3612 mimics. The results displayed that miR-3612 overexpression decreased the expression of TRAF4, while exerted no effect on that of CBX5 and TAOK1 (Figure 3C). Therefore, TRAF4 was predicted as a target of miR-3612. Later, it was discovered that TRAF4 was highly expressed in ESCC cells (Figure 3D). Furthermore, RNA pull-down assay confirmed the potential interaction of miR-3612 with TRAF4 (Figure 3E). RIP assay depicted the significant enrichment of ZFPM2-AS1, miR-3612 and TRAF4 in the complex precipitated by Ago2 antibody (Figure 3F). As Figure 3G presented, miR-3612 was predicted to have a putative binding site on TRAF4. We also discovered that the luciferase activity of TRAF4-WT reporter was diminished with the transfection of miR-3612 mimics, while that of TRAF4-Mut reporter was not affected (Figure 3H). To further confirm the interaction between miR-3612 and TRAF4, TRAF4 expression was elevated for the rescue assays (Figure 3I). EdU assay delineated that the repressed cell proliferation in miR-3612 up-regulated cells was facilitated by TRAF4 overexpression (Figure 3J). Additionally, the up-regulation of miR-3612 boosted cell apoptosis, while the transfection of pcDNA-TRAF4 recovered this effect (Figure 3K). Finally, TRAF4 overexpression offset the function of miR-3612 up-regulation on cell migration and invasion (Figure 3L,M). Since TRAF4 had significant effects on NF- $\kappa$ B pathway, we then detected protein expression of p65 and phospho-p65 (p-p65) via Western blotting analysis. The results demonstrated that p-p65 expression was reduced by silenced ZFPM2-AS1 but was recovered again by up-regulated TRAF4 (Supplementary Figure S2A). Collectively, TRAF4 was a target gene of miR-3612. ZFPM2-AS1 sequestered miR-3612 to up-regulate TRAF4, activating NF- $\kappa$ B pathway.

## ZFPM2-AS1 enhances ESCC cell growth via up-regulating TRAF4

For the purpose of probing whether ZFPM2-AS1 promoted ESCC cell growth by regulating TRAF4 expression, some restoration experiments were designed and carried out. The results of qRT-PCR implied that the decreased TRAF4 expression in sh-ZFPM2-AS1 transfected cells was reserved by transfecting pcDNA-TRAF4 (Figure 4A). EdU assay implied that the suppressed cell proliferation by ZFPM2-AS1 knockdown was abrogated by TRAF4 up-regulation (Figure 4B). In TUNEL assay, the promotive effect of sh-ZFPM2-AS1 on the apoptosis was recovered by up-regulated TRAF4 (Figure 4C). Wound healing assay and transwell assay unveiled that cell migration and invasion hampered by ZFPM2-AS1 silencing was abolished by overexpressed TRAF4 (Figure 4D,E). In conclusion, ZFPM2-AS1 enhances ESCC cell growth via up-regulating TRAF4.

## Discussion

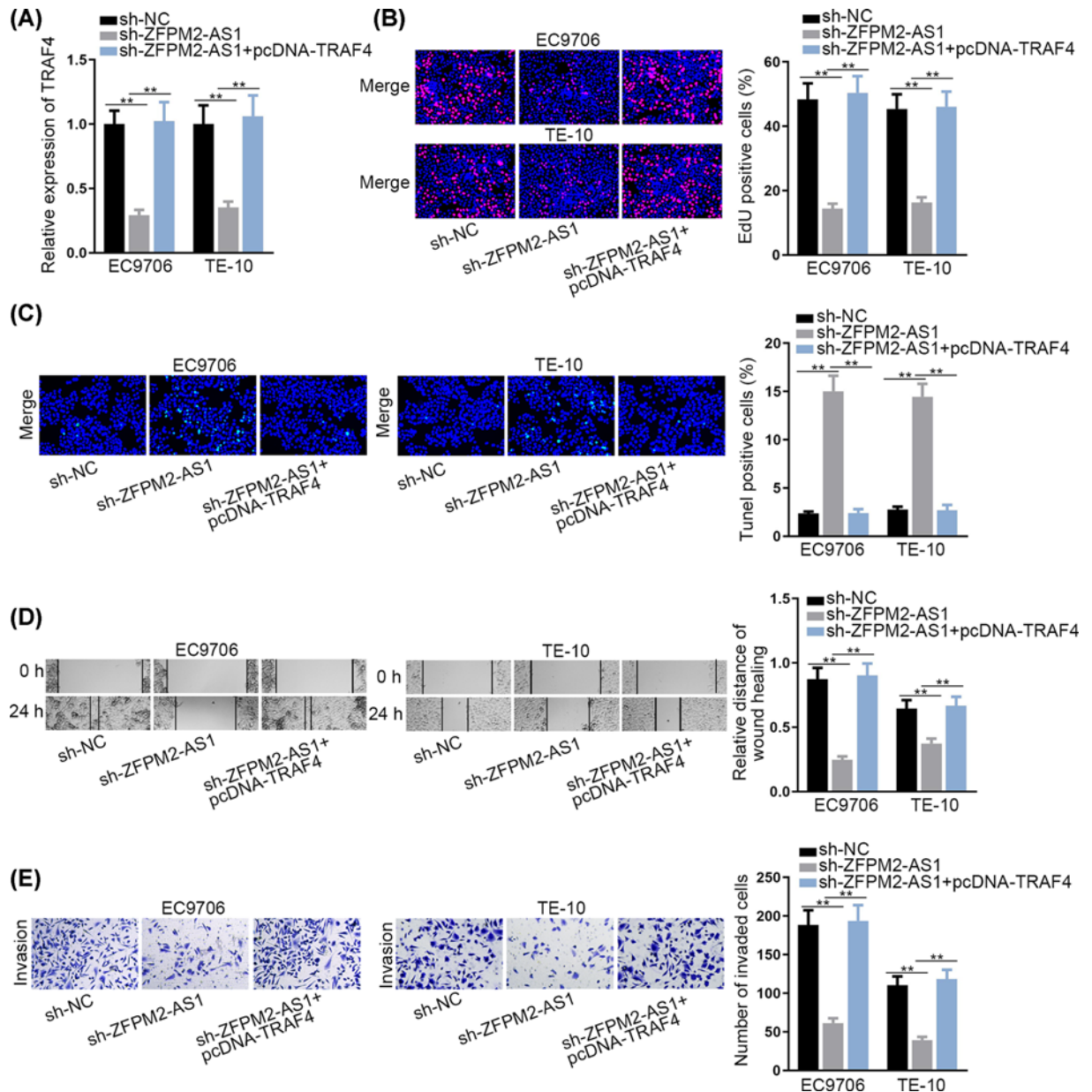
Accumulating studies have uncovered the aberrant expression of lncRNAs in ESCC [22]. The dysregulated lncRNAs were validated to be closely correlated with ESCC malignancy through affecting tumor processes [23]. Thus, it may be essential to investigate the functions of lncRNAs in ESCC progression for identifying novel potential biomarkers for the therapy of cancers. Here, we first detected ZFPM2-AS1 expression in ESCC cells and then evaluated its effect on the cell growth, including proliferation, apoptosis, migration and invasion. ZFPM2-AS1 acted as a tumor promoter in tumorigenesis and tumor progression. For example, ZFPM2-AS1 enhances cell proliferation, inhibits cell apoptosis



**Figure 3. TRAF4 is a target gene of miR-3612**

(A) Predicted mRNAs were showed by Venn diagram. (B) CBX5, TAOK1 and TRAF4 expressions in ESCC tissues. (C) The expressions of CBX5, TAOK1 and TRAF4 in ESCC cells transfected with miR-3612 mimics. (D) TRAF4 expression in ESCC cells and HET-1A cell. (E) The potential interaction between TRAF4 and miR-3612 was validated by RNA pull-down assay. (F) RIP assay was conducted for measuring the binding between TRAF4 and miR-3612. (G) Predicted binding site of miR-3612 on TRAF4. (H) Luciferase activity of TRAF4-WT or TRAF4-MUT was estimated in ESCC cells with the transfection of miR-3612 mimics or NC mimics. (I) Transfection efficiency of pcDNA-TRAF4 in ESCC cells was detected. (J and K) Cell proliferation and apoptosis were determined by transfecting miR-3612 mimics. (L and M) Function of up-regulated miR-3612 on cell migration and invasion; \* $P < 0.05$ , \*\* $P < 0.01$ .





**Figure 4. ZFPM2-AS1 enhances ESCC cell growth via up-regulating TRAF4**

(A) TRAF4 expression was detected in cells transfected with sh-NC, sh-ZFPM2-AS1, sh-ZFPM2-AS1+pcDNA-TRAF4. (B and C) EdU and TUNEL assays were performed to evaluate cell proliferation and apoptosis in each group. (D and E) The migration and invasion in each group was confirmed by wound healing and transwell assay; \*\*P < 0.01.

and alleviates the p53 pathway in gastric cancer [17]. ZFPM2-AS1 is overexpressed in lung adenocarcinoma, predicts a poor prognosis and boosts cell proliferation [18]. In the present study, we found that ZFPM2-AS1 was up-regulated in ESCC cells. The knockdown of it was associated with the inhibited cell proliferation, migration, invasion and augmented apoptosis. These results uncovered the oncogenic property of ZFPM2-AS1 in ESCC.

Diverse mechanisms by which ZFPM2-AS1 modulates cancer progression have been well revealed, including stabilizing MIF in gastric cancer [17] and sponging miR-18b-5p to regulate VMA21 expression in lung adenocarcinoma [18]. Notably, the potential molecular mechanisms by which ZFPM2-AS1 might modulate the tumorigenic processes in ESCC were explored. MicroRNAs (miRNAs) are small RNAs comprising 20–22 nucleotides [24]. MiRNAs could emerge as significant regulators in tumor initiation and progression [25]. Extensive reports have unveiled a series of dysregulated miRNAs in ESCC [26,27]. MiR-3612 is a novel miRNA that has not been studied in cancers. In the



present study, we found that miR-3612 was expressed at a low level in ESCC cells. Besides, miR-3612 could interact with ZFPM2-AS1. Furthermore, the overexpression of miR-3612 hampered cell proliferation, migration and invasion and facilitated cell apoptosis in ESCC. Conclusively, ZFPM2-AS1 acted as miR-3612 sponge.

It has been confirmed that miRNAs could recognize and directly bind to their target mRNAs 3' untranslated regions (3'-UTRs) and consequently leading to the degradation or translation inhibition of mRNAs [28]. TRAF4, TNF receptor associated factor 4, is targeted by miR-302c-3p and overexpressed in hepatocellular carcinoma [29]. In addition, TRAF4 acts as functional target of miR-29a/b/c in glioma and its expression level was strongly correlated with the prognosis of patients [30]. In the present study, we discovered that TRAF4 was highly expressed in ESCC cells and served as a target gene of miR-3612. Additionally, overexpressed TRAF4 recovered the effect of miR-3612 or ZFPM2-AS1 up-regulation on ESCC cell growth.

It has been widely reported that lncRNAs are potential crucial regulators of inflammatory signaling, including NF- $\kappa$ B pathway [31]. NF- $\kappa$ B is a significant contributor to initiation and progression of various cancers via controlling tumor cell proliferation, survival, migration, inflammation, invasion and angiogenesis [32]. Also, NF- $\kappa$ B pathway was reported to facilitate ESCC cell proliferation and invasion [33]. The previous studies have pointed out that TRAF4 could activate NF- $\kappa$ B to accelerate cancer development [34,35]. In present study, we identified that ZFPM2-AS1 could activate NF- $\kappa$ B pathway via up-regulating TRAF4, thus facilitating ESCC cell proliferation, migration, invasion and inhibiting ESCC cell apoptosis.

In conclusion, ZFPM2-AS1 acted as an up-regulated lncRNA in ESCC cells and enhanced ESCC cell growth by sequestering miR-3612 to up-regulate TRAF4 and activate NF- $\kappa$ B pathway. Thus, ZFPM2-AS1/miR-3612/TRAF4 might provide a theoretical basis for treating ESCC.

## Competing Interests

The authors declare that there are no competing interests associated with the manuscript.

## Funding

The authors declare that there are no sources of funding to be acknowledged.

## Author Contribution

Gaozhong Sun written the manuscript and conducted experiments. Changhao Wu analyzed data using statistical analysis tools.

## Acknowledgement

We appreciate all participants who provide support for the study.

## Abbreviations

ceRNA, competitive endogenous RNA; ESCC, esophageal squamous cell carcinoma; lncRNA, long noncoding RNA; RIP, RNA immunoprecipitation; shRNA, short hairpin RNA.

## References

- Nagai, H. and Kim, Y.H. (2017) Cancer prevention from the perspective of global cancer burden patterns. *J. Thoracic Disease* **9**, 448–451, <https://doi.org/10.21037/jtd.2017.02.75>
- Chen, W., He, Y., Zheng, R., Zhang, S., Zeng, H., Zou, X. et al. (2013) Esophageal cancer incidence and mortality in China, 2009. *J. Thoracic Disease* **5**, 19–26
- Arnold, M., Soerjomataram, I., Ferlay, J. and Forman, D. (2015) Global incidence of oesophageal cancer by histological subtype in 2012. *Gut* **64**, 381–387, <https://doi.org/10.1136/gutjnl-2014-308124>
- Kollarova, H., Machova, L., Horakova, D., Janoutova, G. and Janout, V. (2007) Epidemiology of esophageal cancer—an overview article. *Biomed. Papers Med. Facul. Univ. Palacky Olomouc Czechoslovakia* **151**, 17–20, <https://doi.org/10.5507/bp.2007.003>
- Ponting, C.P., Oliver, P.L. and Reik, W. (2009) Evolution and functions of long noncoding RNAs. *Cell* **136**, 629–641, <https://doi.org/10.1016/j.cell.2009.02.006>
- Khalil, A.M., Guttman, M., Huarte, M., Garber, M., Raj, A., Rivea Morales, D. et al. (2009) Many human large intergenic noncoding RNAs associate with chromatin-modifying complexes and affect gene expression. *PNAS* **106**, 11667–11672, <https://doi.org/10.1073/pnas.0904715106>
- Guttman, M. and Rinn, J.L. (2012) Modular regulatory principles of large non-coding RNAs. *Nature* **482**, 339–346, <https://doi.org/10.1038/nature10887>
- Sarfi, M., Abbastabar, M. and Khalili, E. (2019) Long noncoding RNAs biomarker-based cancer assessment. *J. Cell. Physiol.* **234**, 16971–16986, <https://doi.org/10.1002/jcp.28417>

- 9 Sun, Y. and Ma, L. (2019) New Insights into Long Non-Coding RNA MALAT1 in Cancer and Metastasis. *Cancers* **11**, <https://doi.org/10.3390/cancers11020216>
- 10 Meng, L., Ma, P., Cai, R., Guan, Q., Wang, M. and Jin, B. (2018) Long noncoding RNA ZEB1-AS1 promotes the tumorigenesis of glioma cancer cells by modulating the miR-200c/141-ZEB1 axis. *Am. J. Transl. Res.* **10**, 3395–3412
- 11 Feng, H., Wei, B. and Zhang, Y. (2019) Long non-coding RNA HULC promotes proliferation, migration and invasion of pancreatic cancer cells by down-regulating microRNA-15a. *Int. J. Biol. Macromol.* **126**, 891–898, <https://doi.org/10.1016/j.ijbiomac.2018.12.238>
- 12 Fanelli, G.N., Gasparini, P., Coati, I., Cui, R., Pakula, H., Chowdhury, B. et al. (2018) LONG-NONCODING RNAs in gastroesophageal cancers. *Non-Coding RNA Res.* **3**, 195–212, <https://doi.org/10.1016/j.ncrna.2018.10.001>
- 13 Zhang, Y., Li, R., Ding, X., Zhang, K. and Qin, W. (2019) Upregulation of long non-coding RNA SNHG6 promote esophageal squamous cell carcinoma cell malignancy and its diagnostic value. *Am. J. Transl. Res.* **11**, 1084–1091
- 14 Zhang, S., Liang, Y., Wu, Y., Chen, X., Wang, K., Li, J. et al. (2019) Upregulation of a novel lncRNA LINC01980 promotes tumor growth of esophageal squamous cell carcinoma. *Biochem. Biophys. Res. Commun.* **513**, 73–80, <https://doi.org/10.1016/j.bbrc.2019.03.012>
- 15 Wang, G., Sun, J., Zhao, H. and Li, H. (2018) Long Non-Coding RNA (lncRNA) Growth Arrest Specific 5 (GAS5) Suppresses Esophageal Squamous Cell Carcinoma Cell Proliferation and Migration by Inactivating Phosphatidylinositol 3-kinase (PI3K)/AKT/Mammalian Target of Rapamycin (mTOR) Signaling Pathway. *Med. Sci. Monit.* **24**, 7689–7696, <https://doi.org/10.12659/MSM.910867>
- 16 Ma, W., Zhang, C.Q., Li, H.L., Gu, J., Miao, G.Y., Cai, H.Y. et al. (2018) LncRNA FER1L4 suppressed cancer cell growth and invasion in esophageal squamous cell carcinoma. *Eur. Rev. Med. Pharmacol. Sci.* **22**, 2638–2645
- 17 Kong, F., Deng, X., Kong, X., Du, Y., Li, L., Zhu, H. et al. (2018) ZFPM2-AS1, a novel lncRNA, attenuates the p53 pathway and promotes gastric carcinogenesis by stabilizing MIF. *Oncogene* **37**, 5982–5996, <https://doi.org/10.1038/s41388-018-0387-9>
- 18 Xue, M., Tao, W., Yu, S., Yan, Z., Peng, Q., Jiang, F. et al. (2019) lncRNA ZFPM2-AS1 promotes proliferation via miR-18b-5p/VMA21 axis in lung adenocarcinoma. *J. Cell. Biochem.* **121**, 313–321, <https://doi.org/10.1002/jcb.29176>
- 19 He, M., Lin, Y. and Xu, Y. (2019) Identification of prognostic biomarkers in colorectal cancer using a long non-coding RNA-mediated competitive endogenous RNA network. *Oncol. Lett.* **17**, 2687–2694
- 20 Cao, Z., Pan, X., Yang, Y., Huang, Y. and Shen, H.B. (2018) The lncLocator: a subcellular localization predictor for long non-coding RNAs based on a stacked ensemble classifier. *Bioinformatics* **34**, 2185–2194, <https://doi.org/10.1093/bioinformatics/bty085>
- 21 Li, J.H., Liu, S., Zhou, H., Qu, L.H. and Yang, J.H. (2014) starBase v2.0: decoding miRNA-ceRNA, miRNA-ncRNA and protein-RNA interaction networks from large-scale CLIP-Seq data. *Nucleic Acids Res.* **42**, D92–D97, <https://doi.org/10.1093/nar/gkt1248>
- 22 Zhang, Y., Chen, W., Pan, T., Wang, H., Zhang, Y. and Li, C. (2019) LBX2-AS1 is activated by ZEB1 and promotes the development of esophageal squamous cell carcinoma by interacting with HNRNPC to enhance the stability of ZEB1 and ZEB2 mRNAs. *Biochem. Biophys. Res. Commun.* **511**, 566–572, <https://doi.org/10.1016/j.bbrc.2019.02.079>
- 23 Abraham, J.M. and Meltzer, S.J. (2017) Long Noncoding RNAs in the Pathogenesis of Barrett's Esophagus and Esophageal Carcinoma. *Gastroenterology* **153**, 27–34, <https://doi.org/10.1053/j.gastro.2017.04.046>
- 24 Teoh, S.L. and Das, S. (2017) The Role of MicroRNAs in Diagnosis, Prognosis, Metastasis and Resistant Cases in Breast Cancer. *Curr. Pharm. Des.* **23**, 1845–1859, <https://doi.org/10.2174/1381612822666161027120043>
- 25 Shukla, G.C., Singh, J. and Barik, S. (2011) MicroRNAs: Processing, Maturation, Target Recognition and Regulatory Functions. *Mol. Cell. Pharm.* **3**, 83–92
- 26 Sun, C., Zhang, X., Chen, Y., Jia, Q., Yang, J. and Shu, Y. (2018) MicroRNA-365 suppresses cell growth and invasion in esophageal squamous cell carcinoma by modulating phosphoserine aminotransferase 1. *Cancer Manage. Res.* **10**, 4581–4590, <https://doi.org/10.2147/CMAR.S157858>
- 27 Xiao, Q., Chen, T., Wu, Y., Wu, W., Xu, Y., Gong, Z. et al. (2018) MicroRNA6753p promotes esophageal squamous cell cancer cell migration and invasion. *Mole. Med. Rep.* **18**, 3631–3640
- 28 Bartel, D.P. (2009) MicroRNAs: target recognition and regulatory functions. *Cell* **136**, 215–233, <https://doi.org/10.1016/j.cell.2009.01.002>
- 29 Yang, L., Guo, Y., Liu, X., Wang, T., Tong, X., Lei, K. et al. (2018) The tumor suppressive miR-302c-3p inhibits migration and invasion of hepatocellular carcinoma cells by targeting TRAF4. *J. Cancer* **9**, 2693–2701, <https://doi.org/10.7150/jca.25569>
- 30 Shi, C., Rao, C., Sun, C., Yu, L., Zhou, X., Hua, D. et al. (2018) miR-29s function as tumor suppressors in gliomas by targeting TRAF4 and predict patient prognosis. *Cell Death. Dis.* **9**, 1078
- 31 Coraci, D., Giovannini, S., Loreti, C., Pecchioli, C., Piccinini, G. and Padua, L. (2018) The past encounters the future: “old” diagnostic methods to check innovative treatments for carpal tunnel syndrome. Comment on: “Treatment of carpal tunnel syndrome: from ultrasonography to ultrasound surgery” by Petrover and Richette. *Joint Bone Spine* 2017. *Joint Bone Spine* **85**, 783–784
- 32 Puar, Y.R., Shanmugam, M.K., Fan, L., Arfuso, F., Sethi, G. and Tergaonkar, V. (2018) Evidence for the Involvement of the Master Transcription Factor NF-kappaB in Cancer Initiation and Progression. *Biomedicines* **6**, 82, <https://doi.org/10.3390/biomedicines6030082>
- 33 Zhao, J., Gai, L., Gao, Y., Xia, W., Shen, D., Lin, Q. et al. (2018) TAB3 promotes human esophageal squamous cell carcinoma proliferation and invasion via the NFkappaB pathway. *Oncol. Rep.* **40**, 2876–2885
- 34 Zhu, L., Zhang, S., Huan, X., Mei, Y. and Yang, H. (2018) Down-regulation of TRAF4 targeting RSK4 inhibits proliferation, invasion and metastasis in breast cancer xenografts. *Biochem. Biophys. Res. Commun.* **500**, 810–816, <https://doi.org/10.1016/j.bbrc.2018.04.164>
- 35 Kim, E., Kim, W., Lee, S., Chun, J., Kang, J., Park, G. et al. (2017) TRAF4 promotes lung cancer aggressiveness by modulating tumor microenvironment in normal fibroblasts. *Sci. Rep.* **7**, 8923