

# **Olaparib Efficacy in Patients with Metastatic Castration-resistant Prostate Cancer and *BRCA1*, *BRCA2* or *ATM* Alterations Identified by Testing Circulating Tumor DNA**

Nobuaki Matsubara,<sup>1</sup> Johann de Bono,<sup>2</sup> David Olmos,<sup>3</sup> Giuseppe Procopio,<sup>4</sup> Satoru Kawakami,<sup>5</sup> Yüksel Ürün,<sup>6</sup> Robbert van Alphen,<sup>7</sup> Aude Flechon,<sup>8</sup> Michael A Carducci,<sup>9</sup> Young Deuk Choi,<sup>10</sup> Sebastien J Hotte,<sup>11</sup> Ernesto Korbenfeld,<sup>12</sup> Gero Kramer,<sup>13</sup> Neeraj Agarwal,<sup>14</sup> Kim N Chi,<sup>15</sup> Simon Dearden,<sup>16</sup> Chris Gresty,<sup>16</sup> Jinyu Kang,<sup>17</sup> Christian Poehlein,<sup>18</sup> Elizabeth A Harrington,<sup>16</sup> Maha Hussain<sup>19</sup>

<sup>1</sup>*National Cancer Center Hospital East, Chiba, Japan;* <sup>2</sup>*The Institute of Cancer Research and Royal Marsden, London, UK;* <sup>3</sup>*Spanish National Cancer Research Centre (CNIO), Madrid, and Instituto de Investigación Biomédica de Málaga (IBIMA), Spain;* <sup>4</sup>*Medical Oncology Dept, Fondazione IRCCS Istituto Nazionale dei Tumori, Milan, Italy;* <sup>5</sup>*Department of Urology, Saitama Medical Center, Saitama Medical University, Saitama, Japan;* <sup>6</sup>*Department of Medical Oncology, Ankara University, Ankara, Turkey;* <sup>7</sup>*Department of Oncology, Elisabeth Tweesteden Hospital, Tilburg, The Netherlands;* <sup>8</sup>*Cancérologie Médicale, Centre Léon-Bérard, Lyon Cedex; France;* <sup>9</sup>*Johns Hopkins Kimmel Cancer Center, Baltimore, MD, USA;* <sup>10</sup>*Department of Urology, Yonsei University Severance Hospital, Seoul, South Korea;* <sup>11</sup>*Juravinski Cancer Centre, Hamilton, Ontario, Canada;* <sup>12</sup>*Hospital Britanico de Buenos Aires, Buenos Aires, Argentina;* <sup>13</sup>*AKH Wien, Vienna, Austria;* <sup>14</sup>*Huntsman Cancer Institute, University of Utah (NCI-CCC), Salt Lake City, UT, USA;* <sup>15</sup>*University of British Columbia, Vancouver, Canada;* <sup>16</sup>*AstraZeneca, Cambridge, UK;* <sup>17</sup>*AstraZeneca, Gaithersburg, MD, USA;* <sup>18</sup>*Merck & Co., Inc., Kenilworth,*

NJ, USA; <sup>19</sup>Robert H. Lurie Comprehensive Cancer Center, Northwestern University  
Feinberg School of Medicine, Chicago, IL, USA

**Running title:** Olaparib efficacy in patients identified by ctDNA testing

**Corresponding author:** Nobuaki Matsubara, National Cancer Center Hospital East,  
6-5-1, Kashiwanoha, 104-0045 Kashiwa, Chiba, Japan. Phone Number: +81-4-7133-  
1111. Fax Number: +81-4-7134-6922. Email: nmatsuba@east.ncc.go.jp

**Key words:** ctDNA, olaparib, PROfound, metastatic prostate cancer, mCRPC

### **Potential conflicts of interest**

**NM:** Advisory role for AstraZeneca, Bayer, Janssen, Lilly, Merck Sharp & Dohme, Roche, and Sanofi; speaker bureau/expert testimony for AstraZeneca, Chugai, Janssen and Sanofi; grant and institution funding from AstraZeneca, Bayer, Eisai, Janssen, Lilly, Merck Sharp & Dohme, Roche, Amgen, Takeda and Sanofi.

**JdB:** Grants and personal fees from AstraZeneca during the conduct of the study; personal fees and non-financial support from Astellas Pharma, grants, personal fees and non-financial support from AstraZeneca, personal fees from Bayer, Boehringer Ingelheim, Genentech/Roche, Merck Serono, Merck Sharp & Dohme, Janssen, and Pfizer, personal fees and non-financial support from Sanofi, non-financial support from Genmab, GlaxoSmithKline, Orion Pharma GmbH, Qiagen, Taiho Pharmaceutical and Vertex, personal fees and other from Cellcentric, Daiichi, GSK, Menarini/Silicon Biosystems and Sierra Oncology outside the submitted work.

**DO:** Consulting or advisory role for AstraZeneca, Bayer, Clovis, Daiichi-Sankyo, Janssen, MSD and Roche; institution research funding from Astellas, AstraZeneca, Bayer, Genentech, Janssen, Medivation, MSD, Pfizer and F Hoffman-Roche; travel support from AstraZeneca, Bayer, Ipsen, Janssen and Roche.

**GP:** Advisory role/consulting for Astellas, AstraZeneca, Bayer, BMS, Janssen, Ipsen, Merck, MSD, Novartis, Pfizer and Sanofi; research grants from Ipsen and Novartis.

**SK:** Advisory role for Janssen; speaker bureau/expert testimony for AstraZeneca, Janssen, Bayer, Sanofi, Phillips and Eisai; grants and institution funding from Daiichi Sankyo, Takeda, Bayer, and Nippon-Shinyaku.

**YÜ:** Research funding (institutional and personal) from the Turkish Oncology Group; honoraria from Amgen, Astellas, Bristol Myers-Squibb, Janssen, Merck, Novartis, Pfizer and Roche; consulting or advisory role for Amgen, Astellas, AstraZeneca, Bristol Myers-Squibb, Janssen, Merck, Novartis, Pfizer and Roche; travel, accommodations and expenses from Astellas, Bristol Myers-Squibb, Janssen, Merck, Pfizer and Roche.

**RvA:** Nothing to declare.

**AF:** Honoraria from MSD, AAA, Bayer, Janssen, Astellas, Sanofi, AstraZeneca, Pfizer, Seattle Genetics, Immunomedics; travel, accommodations and expenses from MSD, AstraZeneca, AAA, Bayer, Astellas, Janssen, Pfizer and Seattle Genetics.

**MAC:** Research funding from AstraZeneca for this study; consulting for Foundation Medicine and Pfizer.

**YDC:** Nothing to declare.

**SJH:** Honoraria from Astellas Scientific and Medical Affairs Inc, Janssen Oncology, Bayer and Merck; consulting or advisory role for Janssen, Astellas Pharma, Bristol-Myers Squibb, Pfizer, Bayer, AstraZeneca, Merck, Roche Canada, Eisai and Ipsen; research funding from AstraZeneca, Roche/Genentech, Merck, Clovis Oncology, Bristol-Myers Squibb, Janssen Oncology, Ayala Pharmaceuticals, Pfizer, Astellas Pharma, Seattle Genetics and SignalChem; travel, accommodations, expenses from Eisai Canada.

**EK:** Nothing to declare.

**GK:** Consulting or advisory role for AstraZeneca, Sanofi, Janssen, Bayer, Ipsen, MSD and Novartis.

**NA:** Consultancy to Astellas, Astra Zeneca, Aveo, Bayer, Bristol Myers Squibb, Calithera, Clovis, Eisai, Eli Lilly, EMD Serono, Exelixis, Foundation Medicine, Genentech, Gilead, Janssen, Merck, MEI Pharma, Nektar, Novartis, Pfizer, Pharmacyclics, and Seattle Genetics; research funding to NA's institution from Astra Zeneca, Bavarian Nordic , Bayer, Bristol Myers Squibb, Calithera, Celldex, Clovis, Eisai, Eli Lilly, EMD Serono, Exelixis, Genentech, Glaxo Smith Kline, Immunomedics, Janssen, Medivation, Merck, Nektar, New Link Genetics, Novartis, Pfizer, Prometheus, Rexahn, Roche, Sanofi, Seattle Genetics, Takeda, and Tracon.

**KNC:** Consulting and honoraria from Astellas, AstraZeneca, Daiichi Sankyo, Janssen, Novartis, Pfizer, Point Biopharma, Roche, Sanofi; research grants from Astellas, AstraZeneca, Janssen, Sanofi.

**SD:** employment and stock ownership with AstraZeneca.

**CG:** employment and stock ownership with AstraZeneca.

**JK:** employment and stock ownership with AstraZeneca.

**CP:** employee of Merck Sharp & Dohme Corp., a subsidiary of Merck & Co., Inc., Kenilworth, NJ, USA and stock ownership in Merck & Co., Inc., Kenilworth, NJ, USA.

**EAH:** employment and stock ownership with AstraZeneca.

**MH:** Consulting or advisory role for Novartis, Bristol-Myers Squibb, Daiichi Sankyo Company, Janssen, Pfizer, AZ/Merck; honoraria for educational functions/lectures for Astellas Pharma, AstraZeneca, MLI PeerView, OncLive, PER, Phillips Gilmore Oncology, projects in Knowledge, Research to Practice, Sanofi/Genzyme, UroToday, Precisca, Merck, Reach MD, Web MD.; grants and institution funding from AstraZeneca, Bayer, Genentech, PCCTC, Pfizer (UM-Inst), Arvinas.

## ABSTRACT

**Purpose:** The phase III PROfound study (NCT02987543) evaluated olaparib versus abiraterone or enzalutamide (control) in metastatic castration-resistant prostate cancer (mCRPC) with tumor homologous recombination repair (HRR) gene alterations. We present exploratory analyses on the use of ctDNA testing as an additional method to identify mCRPC patients with HRR gene alterations who may be eligible for olaparib treatment.

**Patients and Methods:** Plasma samples collected during screening in PROfound were retrospectively sequenced using the FoundationOne® Liquid CDx test for *BRCA1*, *BRCA2* (BRCA) and *ATM* alterations in ctDNA. Only patients from Cohort A (BRCA/*ATM*-alteration positive by tissue testing) were evaluated. We compared clinical outcomes, including radiographic progression-free survival (rPFS) between the ctDNA subgroup and Cohort A.

**Results:** Of the 181 (73.9%) Cohort A patients who gave consent for plasma sample ctDNA testing, 139 (76.8%) yielded a result and BRCA/*ATM* alterations were identified in 111 (79.9%). Of these, 73 patients received olaparib and 38 received control. Patients' baseline demographics and characteristics, and the prevalence of HRR alterations were comparable to the Cohort A ITT population. rPFS was longer in the olaparib group versus control (median 7.4 vs. 3.5 months; hazard ratio [HR] 0.33; 95% confidence interval [CI], 0.21–0.53; nominal  $P < 0.0001$ ), which is consistent with Cohort A ITT population (HR 0.34 [95% CI, 0.25–0.47]).

**Conclusions:** When tumor tissue testing is not feasible or has failed, ctDNA testing may be a suitable alternative to identify patients with mCRPC carrying BRCA/*ATM* alterations who may benefit from olaparib treatment.

## Translational Relevance

Our findings from the phase III PROfound study demonstrate the clinical utility of circulating tumor DNA (ctDNA) next-generation sequencing (NGS) testing as an alternative to tumor-based NGS testing, to identify patients with metastatic castration-resistant prostate cancer (mCRPC) and *BRCA1*, *BCRA2* and *ATM* (BRCA/ATM) alterations that may benefit from olaparib treatment.

In this exploratory analysis, efficacy, and safety of olaparib were consistent between patients with mCRPC whose alterations in BRCA/ATM were identified by ctDNA NGS testing and those whose alterations in BRCA/ATM were identified by tissue-based NGS testing in the intention to treat Cohort A population of the PROfound study.

These results support consideration of ctDNA testing to identify mCRPC patients BRCA/ATM alterations who may benefit from olaparib treatment when tumor tissue testing is not feasible.

## Introduction

Metastatic castration-resistant prostate cancer (mCRPC) is a molecularly heterogeneous disease with a poor prognosis [1-3]. Approximately 20–30% of patients with this disease harbor deleterious alterations in DNA damage-repair genes, including those with direct or indirect roles in homologous recombination repair (HRR) [1-3]. The PROfound study (NCT02987543) is the first phase III trial to show that the poly(ADP-ribose) polymerase (PARP) inhibitor olaparib provides a statistically and clinically significant improvement in radiographic progression-free survival (rPFS) and overall survival (OS) versus control (physician's choice of enzalutamide or abiraterone) in patients with mCRPC and tumor HRR gene alterations [4, 5]. Patient tumor tissue was tested for detecting alterations in 15 prespecified HRR genes using an investigational use only (IUO) assay based on the FoundationOne<sup>®</sup> CDx tissue test (Foundation Medicine Inc. [FMI]) [6]. Patients with alterations in *BRCA1*, *BRCA2* or *ATM* (*BRCA/ATM*) were assigned to Cohort A, while patients with alterations in the other prespecified HRR genes joined Cohort B. Based on the findings of the PROfound study, the US Food and Drug Administration (FDA) approved olaparib for patients with germline or somatic 14 HRR gene-altered mCRPC, who have progressed following prior treatment with enzalutamide or abiraterone, while the European Medicines Agency (EMA) and the Japanese Ministry of Health, Labour and Welfare have approved olaparib for patients with germline or somatic *BRCA1* and *BRCA2* alterations following new hormonal agent progression [7-9]. Identifying eligible patients with mCRPC who may benefit from olaparib treatment using molecular diagnostics is key to improving patients' survival.



Tissue-based next-generation sequencing (NGS) is currently the gold standard approach for the identification of HRR gene alterations in patients with mCRPC [10-12]; however, there may be instances when this may not be an option. For example, the logistical challenges of formalin-fixed paraffin-embedded block retrieval, which can prevent use of existing archival materials [13], suboptimal success rates in patients with non-accessible visceral lesions [14-16], and technical difficulties in obtaining tissue samples from patients with bone-only metastases [17-20] all can preclude tissue testing. The overall success rate of tissue NGS testing in PROfound was 69% [4], compared with 67% in the IPATential150 trial [21] and 74% in metastatic samples and 56% in primary tumor samples for TRITON2 and TRITON3 [22]. The PROfound study highlighted factors which may predict successful generation of NGS results and gives options to optimize the testing approach; practical considerations for the optimization of tissue NGS testing have previously been published [23]. Circulating tumor DNA (ctDNA) testing is an evolving technology in the assessment of patients with advanced prostate cancer, that represents an additional approach to tissue testing, that is particularly useful when tumor tissue samples are not available. ctDNA analysis allows for another means of assessing tumor tissue including gene alterations of somatic and germline origin, suggesting that ctDNA analysis may be a suitable surrogate for gene alteration testing in patients with prostate [24]. While not the case for all types of prostate cancer, in metastatic disease high concordance between alterations detected by ctDNA testing and tumor tissue testing has been observed, which make it a potential alternative option when tissue testing is not possible [2, 25-27]. The FoundationOne® Liquid CDx test has subsequently been approved by the FDA and Japanese regulatory agency [28] as a companion diagnostic for evaluation of ctDNA samples

to enable identification of patients with mCRPC who have alterations in *BRCA/ATM* in ctDNA who may benefit from PARP inhibitor treatment [29].

The exploratory analyses presented here evaluated the efficacy of olaparib versus control in patients with qualifying alterations in *BRCA/ATM* in Cohort A of the PROfound study as determined retrospectively by the FoundationOne® Liquid CDx test.

## Methods

### Patients

A detailed description of the methods for the PROfound study (NCT02987543), including patient eligibility criteria, has already been published [4, 30]. In brief, the trial included men with confirmed mCRPC whose disease had progressed while receiving enzalutamide or abiraterone. All patients were required to have tumors harbouring a qualifying deleterious or suspected deleterious alteration in at least 1 of 15 prespecified genes selected for their direct or indirect role in HRR. Two cohorts were enrolled: those with alterations in *BRCA1*, *BRCA2* and/or *ATM* (Cohort A) and those with alterations in  $\geq 1$  of 12 other prespecified HRR genes (Cohort B): *BRIP1*, *BARD1*, *CDK12*, *CHEK1*, *CHEK2*, *FANCL*, *PALB2*, *PPP2R2A*, *RAD51B*, *RAD51C*, *RAD51D* and *RAD54L*. Gene alterations were identified in archival or recently obtained biopsy tissue from the primary or metastatic tumor using an IUO assay based on FMI's FoundationOne® CDx test [31]. During screening, matched plasma samples were collected from consenting patients and subsequently assessed using the FoundationOne® Liquid CDx test [32].

## **Trial design and interventions**

Patients were randomized 2:1 to receive olaparib tablets (300 mg twice daily;  $n = 256$ ) or control (prespecified physician's choice of enzalutamide [160 mg once daily] or abiraterone [1000 mg once daily] plus prednisone [5 mg twice daily];  $n = 131$ ). Patients who were assigned to the control group were eligible to cross over to receive olaparib treatment after independent review confirmed imaging-based progression. All patients provided written informed consent to participate. In the exploratory analysis presented here, only patients from Cohort A who had a positive BRCA/ATM alteration test following tissue testing and who had provided consent for ctDNA testing of their plasma samples were evaluated.

## **Endpoints**

We report results from an exploratory analyses for the subgroup of patients for whom BRCA/ATM alterations were detected by ctDNA testing. The PROfound study was designed so that the primary analysis was conducted on patients in Cohort A only, hence the focus of the manuscript is on Cohort A. Endpoints reported here include rPFS, objective response rate (ORR) and OS. The primary endpoint in PROfound was rPFS – assessed by blinded independent central review (BICR) – in Cohort A for the intention-to-treat (ITT) population (hazard ratio [HR] 0.34 [95% confidence interval [CI], 0.25–0.47]) and has been reported previously [4]. Key secondary endpoints, such as rPFS in the overall population (Cohorts A+B), OS, ORR, and time to pain progression (TTPP) in Cohort A, have also been reported previously [4, 5]. Safety was also assessed in the overall population (Cohorts A+B) through reporting of adverse events (AEs) according to the Common Terminology Criteria Adverse Events, version 4.0 [4, 5]. The PROfound trial was approved by an

institutional review board and performed in accordance with the principles of the Declaration of Helsinki, the International Conference on Harmonisation Good Clinical Practice guidelines, and the AstraZeneca and Merck Sharp & Dohme Corp., a subsidiary of Merck & Co., Inc., Rahway, NJ, USA policies on bioethics. All the patients provided written informed consent.

### **Statistical analysis**

For time-to-event endpoints, rPFS and OS, two-sided *P* values were calculated using log-rank tests stratified by the variables selected in the primary pooling strategy (prior taxane use and measurable disease in Cohort A) and using the Breslow method for handling ties. HRs and 95% CIs were calculated with the use of Cox proportional-hazards models, adjusted for the variables selected in the primary pooling strategy. The Efron approach was used for handling ties. The Kaplan–Meier method was used to calculate medians. Objective response was analyzed for patients with measurable disease at baseline. The odds ratio (OR) and CI of ORR data were calculated using a logistic regression model adjusted for prior taxane use. Where the number of patients with a response was  $\geq 5$ , a *P* value was calculated based on twice the change in log-likelihood resulting from the addition of the treatment factor to the model that contains the specified covariates. Where the number of patients with a response was  $< 5$ , a two-sided *P* value was calculated based on the mid *P*-value modification of Fisher's exact test.

### **Data availability**

Data underlying the findings described in this manuscript may be obtained in accordance with AstraZeneca's data sharing policy described at <https://astrazenecagrouptrials.pharmacm.com/ST/Submission/Disclosure>. To protect patient privacy the raw sequencing data generated in this study are not publicly

available. Requests to access anonymized patient data can be made through the global clinical research data sharing platform, Vivli, at <https://vivli.org/>.

## Results

### Patients

Of the 245 patients in Cohort A of the ITT population, 181 (73.9%) consented to plasma sample ctDNA testing. Of these, 139 (76.8%) had a ctDNA result reported (either mutation positive or negative) with *BRCA/ATM* alterations identified in 111 (79.9%) of the 139 patients. In total, 42 patients had a failed ctDNA test, this failure rate was higher than expected due to a technical failure of a single assay plate during testing. Due to the limited DNA yield obtained from ctDNA samples, it was not possible to attempt a repeat analysis from the majority of the samples on the plate which failed.

Overall, 28 patients were reported to have *BRCA/ATM* alterations by tumor-based NGS testing but were reported negative for *BRCA/ATM* alterations by the ctDNA NGS test. This includes four patients with homozygous deletions or large rearrangements in *ATM* reported by tissue testing, which were not able to be identified by ctDNA testing as these variant types have not been analytically validated [33]. In addition, of the 15 patients with a *BRCA2* homozygous deletion reported in the tumor sample, four patients reported the presence of a homozygous deletion by the ctDNA NGS test, two patients reported other alterations in *BRCA/ATM* but did not report the homozygous deletion and nine patients were reported as negative for *BRCA/ATM* alterations.

Of the identified 111 ctDNA subgroup patients, 73 received olaparib treatment and 38 received control. Demographics and baseline characteristics of patients with

BRCA/ATM alterations evaluated by ctDNA were generally balanced between treatment arms, and were compatible with those of patients in the Cohort A ITT population (**Table 1** and **Supplementary Table 1**).

### **Efficacy analyses**

In the subgroup of patients with alterations in BRCA/ATM determined by ctDNA testing, rPFS was longer in the olaparib group than in the control group (median 7.4 versus 3.5 months; HR 0.33; 95% CI, 0.21–0.53; nominal  $P < 0.0001$ ) (**Fig. 1A**, **Table 2**). In addition, rPFS percentage rates at 6 and 12 months were 61% and 20%, respectively, in the olaparib group and 24% and 7%, respectively in the control group. These findings are comparable with the overall Cohort A ITT population in which rPFS was statistically significantly longer in the olaparib group than the control group (HR 0.34; 95% CI, 0.25–0.47;  $P < 0.001$ ) (**Fig. 1B**), with similar rPFS rates at 6 and 12 months for olaparib and control treatment (**Table 2**) [4]. Within the 28 patients who were reported to have BRCA/ATM alterations by tumor-based NGS testing but were reported negative for BRCA/ATM alterations by the ctDNA NGS test, rPFS was also longer in the olaparib group compared with the control group (median 10.9 versus 3.5 months; HR 0.11; 95% CI, 0.03–0.35).

Patients in the olaparib group also had a longer duration of OS compared with control in patients with alterations in *BRCA1*, *BRCA2* or *ATM* detected by ctDNA testing (HR 0.58; 95% CI, 0.37–0.92; nominal  $P = 0.01$ ) (**Fig. 2A**, **Table 2**). Survival rates at 6, 12 and 18 months were 93%, 68% and 47%, respectively in the olaparib group and 74%, 58% and 37%, respectively in the control group for the Cohort A ctDNA subgroup. These findings are also comparable with the overall Cohort A ITT population in which OS was statistically significantly longer in the olaparib group than the control group (HR 0.69; 95% CI, 0.50–0.97;  $P = 0.02$ ) (**Fig. 2B**). These results

have not been adjusted for patients crossing over from control therapy to olaparib following disease progression.

The ORR was higher in the olaparib group (39.5%) compared with control group (4.8%) in patients with alterations in *BRCA/ATM* as detected by ctDNA testing (**Table 2**). These response rates are comparable to those reported for the overall Cohort A ITT population.

## Discussion

The findings presented here from the phase III PROfound study demonstrate the clinical utility of ctDNA testing as an alternative to tumor-based NGS testing to identify mCRPC patients with HRR alterations that may benefit from olaparib treatment when tumor testing cannot be undertaken due to insufficient tissue or when a tumor test has failed. In the PROfound study, a NGS result generation rate of 69% was reported for tumor tissue-based testing; there is a need to further optimize tumor based NGS testing approaches and the study recognized areas for improvement and ways to increase success rates [4, 23, 34]. In Cohort A, for *BRCA/ATM* alterations, ctDNA testing was concordant with tumor tissue testing in approximately 80% of patients [35]. This concordance rate is similar to that reported for the rucaparib TRITON-2 study (74%) evaluating *BRCA* alterations in tumor tissue and matched ctDNA samples in patients with mCRPC [36]. Other studies comparing ctDNA and tumor-based NGS testing in samples from patients with prostate cancer, including *de novo* metastatic disease, have shown concordance rates of 80–90% for a wider range of gene alterations beyond HRR [37, 38].

Our exploratory analyses of the subgroup of 111 patients from Cohort A of the PROfound study who had *BRCA/ATM* alterations by retrospective ctDNA testing showed that olaparib resulted in improved efficacy compared with control treatment. Nominally significant improvements in rPFS, ORR and OS, were reported for the olaparib group compared with the control treatment group for the Cohort A ctDNA subgroup; these improvements were comparable to those that have previously been reported for the 245 patients from the overall Cohort A ITT population with *BRCA/ATM* alterations identified by prospective tumor based NGS testing [4, 5]. The benefit of olaparib on OS in this study may be underestimated as the results reported here were not adjusted for patient crossover from the control arm to the olaparib arm following disease progression. Approximately 60% of patients in the control arm switched to olaparib treatment, and previous analyses showed that when adjusted for switching, the benefit of olaparib treatment for patients with mCRPC could be even greater for patients in Cohort A, as well as the overall population (crossover-adjusted analysis of OS in Cohort A: HR 0.42; 95% CI, 0.19–0.91) [5, 39]. The safety profile of olaparib in the Cohort A ctDNA subgroup was also consistent with that in the overall PROfound study population (Cohort A + B) with similar proportions of patients reporting AEs, Grade  $\geq 3$  AEs and serious AEs, as well as requiring dose modifications in the two cohorts, which for the overall population includes patients with HRR gene alterations beyond *BRCA/ATM* (**Supplementary Table 2**).

The TRITON2 and TRITON3 studies evaluating rucaparib have also assessed the feasibility of using ctDNA testing (FoundationACT™ and FoundationOne® Liquid assays) to identify specific gene alterations in patients with mCRPC [36]. In an



evaluation of 620 plasma ctDNA samples and 888 tissue samples from screened patients, the incidence of *BRCA/ATM* alterations was marginally higher in ctDNA samples than tumor tissue for both studies. Homozygous *BRCA* alterations could not be detected in these ctDNA samples as the FoundationOne Liquid CDx test is not validated to detect them. A subsequent analysis of >3000 samples, including those from patients screened for TRITON2 and TRITON3, reported a high level of agreement in detection of *BRCA* alterations by ctDNA testing compared with tissue testing [40]. Of the 94% of samples that had detectable ctDNA, the median tumor fraction was 7.5%. Another analysis of data from the TRITON2 study reported that the ORR was 46.3% (95% CI, 30.7–62.6) in 41/62 (66%) patients from the primary efficacy population with *BRCA* alterations retrospectively confirmed by ctDNA testing, which is comparable to the ORR of 43.5% (95% CI, 31.0–56.7) reported in patients with *BRCA* alterations identified by tumor testing [33].

In the patients who had *BRCA/ATM* alterations reported by tumor tissue testing, but who were *BRCA/ATM* negative by ctDNA testing the observed efficacy in olaparib treated patients demonstrated a longer median PFS (10.9 months) than in olaparib treated patients who were positive in both tissue and ctDNA testing (7.4 months). The reasons for this difference are unclear. However, it should be noted that only 28 patients contributed to this analysis. Furthermore, ctDNA shedding, and hence ability to detect alterations in ctDNA have been linked with increased disease burden in other tumour types[41]. ctDNA testing has several advantages over tumor testing, including being less invasive. Although the majority of *HRR* gene alterations appear truncal and so present in primary tumor tissue with changes over time being rarely observed [42-44], it has been shown that *BRCA2/RB1/RNASEH2B* loss can

develop post-next-generation endocrine agent therapy [45]. In these instances, where multiple plasma samples can be collected at different time-points, ctDNA NGS testing could be a useful tool to provide an overview of the patient's mutational status over disease progression and to monitor the emergence of new acquired alterations and resistance mechanisms that cannot be identified by single-site biopsies or archival sample analyses. Timelines for obtaining ctDNA test results may be shorter, as there is no requirement for retrieval of archived samples, and as a consequence costs for ctDNA testing may be lower than for tumor testing.

There are also several limitations of ctDNA testing. The amount of detectable ctDNA can vary greatly depending on the timing of testing in relation to treatment, as well as the histological type and cancer clinical stage [46]. Higher ctDNA fractions are associated with poor prognosis and are correlated with overall tumor burden in patients with mCRPC, suggesting that those with lower ctDNA fractions, who might be more likely to have a non-HRRm ctDNA test result, might have a more favorable prognosis [47]. However, in PROfound Cohort A, the ctDNA subgroups positive and negative for HRRm and the ITT cohort all showed comparable baseline characteristics, although patient numbers for the non-HRRm ctDNA subgroup were only small (olaparib,  $n = 20$ ; control,  $n = 8$ ; **Supplementary Table 1**). A comparable rPFS for the ctDNA subgroup positive for HRRm and the ITT cohort was also observed. These similarities in baseline characteristics across the different subgroups mean the detectability of ctDNA is not affected by demographic factors or by the disease characteristics assessed in PROfound.

In PROfound, in approximately 20% of patients, BRCA/ATM alterations detected by tumor testing were not detected by ctDNA NGS testing. This is to be expected for

two main reasons. First, some patients may not shed, or shed very low quantities of ctDNA into the blood stream. For these patients, detection of *BRCA/ATM* gene mutations using ctDNA NGS may not be possible due to insufficient target ctDNA in the collected samples. Assessing the ctDNA content in samples is therefore important. Secondly, in contrast to tumor tissue testing, ctDNA test assays are not validated to accurately detect homozygous loss and zygosity of mutations. For example, ctDNA testing can detect homozygous deletions of *BRCA2* but only with 30–40% positive percentage agreement with tissue testing due to low tumor content in at least half of ctDNA samples with this being critically important since these patients are the ones that appear to benefit most from PARP inhibition [48]. As a consequence, the FDA-approved label for the FoundationOne® Liquid CDx test reports that a negative result does not rule out the presence of an actionable key alteration, such as *BRCA2* homozygous deletion, and that patients who are negative for companion diagnostic mutations should undergo tumor tissue testing and alteration status confirmed using an FDA-approved tumor tissue test, if feasible [29]. Lastly, a known confounder of ctDNA testing is clonal hematopoiesis of indeterminate potential (CHIP), which can lead to false positive results during ctDNA analysis. CHIP is an age-related phenomenon, which may be particularly relevant in patients with metastatic prostate cancer who tend to be older at diagnosis [40]. A recent study found that around 10% of patients with advanced prostate cancer showed CHIP interference in plasma ctDNA in HRR genes, such as *ATM* and *CHEK2*, to mitigate the risk of misdiagnoses, ctDNA results should therefore be compared with results from a paired whole-blood control or tumor tissue [49].

While our study has demonstrated that the efficacy and safety of olaparib in the Cohort A subgroup who had *BRCA/ATM* alterations by ctDNA testing is similar to that for the Cohort A ITT population, there are some limitations of these exploratory analyses. All patients in Cohort A had already been identified as having *BRCA/ATM* alterations by a tissue test, and this is important to consider when interpreting these findings. Further studies are needed to investigate the efficacy of olaparib in patients whose *BRCA/ATM* alterations were detected by ctDNA testing in the absence of a tumor test result. Furthermore, data from ctDNA testing was not performed to validate alterations in the 12 prespecified genes with a direct or indirect role in HRR, other than *BRCA/ATM*, that were identified by tumor tissue testing in patients from Cohort B. As such, the impact of these alterations on olaparib efficacy was not assessed. In addition, the efficacy of olaparib in patients identified solely using ctDNA testing remains to be determined. The exploratory analyses reported here were not part of the prespecified statistical testing hierarchy for the PROfound study and so were not alpha controlled, and the sample size of the Cohort A ctDNA subgroup included in this exploratory analysis was relatively small, with only 111 patients being eligible for evaluation. Furthermore, although baseline characteristics appeared balanced overall between the olaparib group and the control groups, analyses of this subgroup were not adjusted for confounding factors (e.g., baseline prognostic factors, differences in disease burden and treatment history at baseline, and crossover from the control arm to the olaparib arm following disease progression).

In conclusion, the efficacy of olaparib was consistent between patients with mCRPC whose alterations in *BRCA/ATM* were identified by ctDNA testing and those

whose alterations in *BRCA/ATM* were identified by tissue testing in the ITT Cohort A population of the PROfound study. The overall safety profile of olaparib of Cohort A ctDNA subgroup was similar to that reported for the overall ITT (Cohorts A+B) population. These results support consideration of ctDNA testing to identify patients with mCRPC and *BRCA/ATM* alterations who may benefit from olaparib treatment when tumor tissue testing is not feasible [45].

## Acknowledgments

This study was funded by AstraZeneca and is part of an alliance between AstraZeneca and Merck Sharp & Dohme Corp., a subsidiary of Merck & Co., Inc., Kenilworth, NJ, USA. Medical writing assistance was provided by Kristin Almond, PhD, from Mudskipper Business Ltd, funded by AstraZeneca and Merck Sharp & Dohme Corp., a subsidiary of Merck & Co., Inc., Kenilworth, NJ, USA.

## References

- 1. Pritchard, C.C., et al., *Inherited DNA-repair gene mutations in men with metastatic prostate cancer*. *N Engl J Med*, 2016. **375**(5): p. 443-53.
- 2. Robinson, D., et al., *Integrative clinical genomics of advanced prostate cancer*. *Cell*, 2015. **162**(2): p. 454.
- 3. Abida, W., et al., *Prospective genomic profiling of prostate cancer across disease states reveals germline and somatic alterations that may affect clinical decision making*. *JCO Precis Oncol*, 2017. **2017**: p. doi: 10.1200/PO.17.00029.
- 4. de Bono, J., et al., *Olaparib for metastatic castration-resistant prostate cancer*. *N Engl J Med*, 2020. **382**(22): p. 2091-2102.

- 5. Hussain, M., et al., *Survival with olaparib in metastatic castration-resistant prostate cancer*. *N Engl J Med*, 2020. **383**(24): p. 2345-2357.
- 6. Food and Drug Administration Agency. *FoundationOne CDx - P170019*. 2020 [cited 2021 May 19]; Available from: <https://www.fda.gov/medical-devices/recently-approved-devices/foundationoner-cdx-p170019s017>.
- 7. Food and Drug Administration. *Lynparza (olaparib) prescribing information*. 2020 [cited 2021 19 May]; Available from: <https://www.fda.gov/medical-devices/recently-approved-devices/foundationoner-cdx-p170019s017>.
- 8. European Medicines Agency. *European Medicines Agency - Lynparza*. 2020 [cited 2021 21 January]; Available from: <https://www.ema.europa.eu/en/medicines/human/EPAR/lynparza>.
- 9. AstraZeneca. *Lynparza approved in Japan for the treatment of advanced ovarian, prostate and pancreatic cancers*. 2020 [cited 2021 4 May]; Available from: <https://www.astrazeneca.com/media-centre/press-releases/2020/lynparza-approved-in-japan-for-three-cancers.html#:~:text=Lynparza%20is%20the%20first%20and,for%20over%20100%2C000%20new%20cases.&text=With%20limited%20treatment%20options%2C%20the,is%20only%209%2D13%20months>.
- 10. Parker, C., et al., *Cancer of the prostate: ESMO clinical practice guidelines for diagnosis, treatment and follow-up*. *Ann Oncol*, 2020. **31**(9): p. 1119-1134.
- 11. Schaeffer, E., et al., *NCCN Guidelines Insights: Prostate Cancer, Version 1.2021*. *J Natl Compr Canc Netw*, 2021. **19**(2): p. 134-143.

- 12. Lowrance, W.T., et al., *Advanced prostate cancer: AUA/ASTRO/SUO guideline Part II*. J Urol, 2021. **205**(1): p. 22-29.
- 13. Gonzalez, D., et al., *Practical considerations for optimising homologous recombination repair mutation testing in patients with metastatic prostate cancer*. J Pathol Clin Res, 2021.
- 14. Efstathiou, E., et al., *Molecular characterization of enzalutamide-treated bone metastatic castration-resistant prostate cancer*. Eur Urol, 2015. **67**(1): p. 53-60.
- 15. Ross, R.W., et al., *Predictors of prostate cancer tissue acquisition by an undirected core bone marrow biopsy in metastatic castration-resistant prostate cancer--a Cancer and Leukemia Group B study*. Clin Cancer Res, 2005. **11**(22): p. 8109-13.
- 16. Spritzer, C.E., et al., *Bone marrow biopsy: RNA isolation with expression profiling in men with metastatic castration-resistant prostate cancer--factors affecting diagnostic success*. Radiology, 2013. **269**(3): p. 816-23.
- 17. Jimenez, R.E., et al., *A prospective correlation of tissue histopathology with nucleic acid yield in metastatic castration-resistant prostate cancer biopsy specimens*. Mayo Clin Proc Innov Qual Outcomes, 2019. **3**(1): p. 14-22.
- 18. Zheng, G., et al., *Clinical mutational profiling of bone metastases of lung and colon carcinoma and malignant melanoma using next-generation sequencing*. Cancer Cytopathol, 2016. **124**(10): p. 744-753.
- 19. Bashir, M.N., *Epidemiology of prostate cancer*. Asian Pac J Cancer Prev, 2015. **16**(13): p. 5137-41.

- 20. Friedlander, T.W., C.C. Pritchard, and H. Beltran, *Personalizing therapy for metastatic prostate cancer: the role of solid and liquid tumor biopsies*. Am Soc Clin Oncol Educ Book, 2017. **37**: p. 358-369.
- 21. De Bono, J.S., et al., *PI3K/AKT pathway biomarkers analysis from the phase III IPATential150 trial of ipatasertib plus abiraterone in metastatic castration-resistant prostate cancer*. J Clin Oncol, 2021. **39**(6\_suppl): p. 13.
- 22. Abida, W., et al., *Non-BRCA DNA damage repair gene alterations and response to the PARP inhibitor rucaparib in metastatic castration-resistant prostate cancer: Analysis from the Phase II TRITON2 study*. Clin Cancer Res, 2020. **26**(11): p. 2487-2496.
- 23. Gonzalez, D., et al., *Practical considerations for optimising homologous recombination repair mutation testing in patients with metastatic prostate cancer*. J Pathol Clin Res, 2021. **25 February 2021**: p. [Epub ahead of print].
- 24. Vandekerkhove, G., et al., *Circulating tumor DNA abundance and potential utility in de novo metastatic prostate cancer*. European Urology, 2019. **75**(4): p. 667-675.
- 25. Grasso, C.S., et al., *The mutational landscape of lethal castration-resistant prostate cancer*. Nature, 2012. **487**(7406): p. 239-43.
- 26. Hong, M.K., et al., *Tracking the origins and drivers of subclonal metastatic expansion in prostate cancer*. Nat Commun, 2015. **6**: p. 6605.
- 27. Ulz, P., et al., *Whole-genome plasma sequencing reveals focal amplifications as a driving force in metastatic prostate cancer*. Nat Commun, 2016. **7**: p. 12008.



- 28. Japanese regulatory approval of FoundationOne® Liquid CDx test 2021 [cited 2021 August]; Available from: [https://www.chugai-pharm.co.jp/english/news/detail/20210323170004\\_807.html](https://www.chugai-pharm.co.jp/english/news/detail/20210323170004_807.html).
- 29. Food and Drug Administration Agency. *FoundationOne Liquid CDx – P190032*. 2020 [cited 2021 21 January]; Available from: <https://www.fda.gov/medical-devices/recently-approved-devices/foundationone-liquid-cdx-p190032>.
- 30. Matsubara, N., et al., *Olaparib in patients with mCRPC with homologous recombination repair gene alterations: PROfound Asian subset analysis*. Jpn J Clin Oncol, 2022. **52**(5): p. 441-448.
- 31. Foundation Medicine Inc. *FoundationOne®CDx Technical Information*. 2020 [cited 2021 1 May 2021]; Available from: [https://assets.ctfassets.net/w98cd481qyp0/41rJj28gFwtxCwHQxopaEb/2725881bbc67d6f323ab893851344c4a/FoundationOne\\_CDx\\_Label\\_Technical\\_Info.pdf](https://assets.ctfassets.net/w98cd481qyp0/41rJj28gFwtxCwHQxopaEb/2725881bbc67d6f323ab893851344c4a/FoundationOne_CDx_Label_Technical_Info.pdf).
- 32. Foundation Medicine Inc. *FoundationOne® Liquid CDx Technical Information*. 2020 [cited 2021 01 May 2021]; Available from: [http://info.foundationmedicine.com/hubfs/FMI%20Labels/FoundationOne\\_Liquid\\_CDx\\_Label\\_Technical\\_Info.pdf](http://info.foundationmedicine.com/hubfs/FMI%20Labels/FoundationOne_Liquid_CDx_Label_Technical_Info.pdf).
- 33. *FoundationOne Liquid CDx Technical Information*. [cited 2021 29 April]; Available from: [http://info.foundationmedicine.com/hubfs/FMI%20Labels/FoundationOne\\_Liquid\\_CDx\\_Label\\_Technical\\_Info.pdf](http://info.foundationmedicine.com/hubfs/FMI%20Labels/FoundationOne_Liquid_CDx_Label_Technical_Info.pdf).
- 34. Hussain, M., et al., *Next-generation sequencing (NGS) of tumor tissue from >4000 men with metastatic castration-resistant prostate cancer (mCRPC): the*

*PROfound phase III study experience [abstract]. J Clin Oncol, 2020. 38(6\_Suppl): p. 195.*

- 35. Chi, K.N., et al., *Concordance of BRCA1, BRCA2 (BRCA), and ATM mutations identified in matched tumor tissue and circulating tumor DNA (ctDNA) in men with metastatic castration-resistant prostate cancer (mCRPC) screened in the PROfound study [abstract]. J Clin Oncol, 2021. 39(6\_suppl): p. 26.*
- 36. Chowdhury, S., et al., *Genomic profiling of circulating tumour DNA (ctDNA) and tumour tissue for the evaluation of rucaparib in metastatic castration-resistant prostate cancer (mCRPC). Ann Oncol, 2018. 29(8\_supplement): p. viii273.*
- 37. Wyatt, A.W., et al., *Concordance of circulating tumor DNA and matched metastatic tissue biopsy in prostate cancer. J Natl Cancer Inst, 2017. 109(12): p. djx118.*
- 38. Vandekerkhove, G., et al., *Circulating tumor DNA abundance and potential utility in de novo metastatic prostate cancer. Eur Urol, 2019. 75(4): p. 667-675.*
- 39. Agarwal, N., et al., *Exploring the impact of treatment switching on the interim overall survival (OS) results of the PROfound study [abstract]. Ann Oncol, 2020. 31(4\_supplement): p. S514.*
- 40. Tukachinsky, H., et al., *Genomic analysis of circulating tumor DNA in 3,334 patients with advanced prostate cancer identifies targetable BRCA alterations and AR resistance mechanisms. Clin Cancer Res, 2021. 4 May 2021: p. [Epub ahead of print].*

- 41. Lam, V.K., et al., *Genotype-Specific Differences in Circulating Tumor DNA Levels in Advanced NSCLC*. J Thorac Oncol, 2021. **16**(4): p. 601-609.
- 42. Warner, E., et al., *BRCA2, ATM, and CDK12 defects differentially shape prostate tumor driver genomics and clinical aggression*. Clin Cancer Res, 2021. **27**(6): p. 1650-1662.
- 43. Mateo, J., et al., *Genomics of lethal prostate cancer at diagnosis and castration resistance*. J Clin Invest, 2020. **130**(4): p. 1743-1751.
- 44. Schweizer, M.T., et al., *Concordance of DNA Repair Gene Mutations in Paired Primary Prostate Cancer Samples and Metastatic Tissue or Cell-Free DNA*. JAMA Oncol, 2021.
- 45. Sumanasuriya, S., et al., *Elucidating prostate cancer behaviour during treatment via low-pass whole-genome sequencing of circulating tumour DNA*. Eur Urol, 2021. **80**(2): p. 243-253.
- 46. Bettgowda, C., et al., *Detection of circulating tumor DNA in early- and late-stage human malignancies*. Sci Transl Med, 2014. **6**(224): p. 224ra24.
- 47. Wyatt, A.W., et al., *Genomic alterations in circulating tumor DNA (ctDNA) are associated with clinical outcomes in treatment-naive metastatic castration-resistant prostate cancer (mCRPC) patients commencing androgen receptor (AR)-targeted therapy*. Ann Oncol, 2016. **27**: p. vi17.
- 48. Carreira, S., et al., *Biomarkers associating with PARP inhibitor benefit in prostate cancer in the TOPARP-B trial*. Cancer Discov, 2021. **May 27**: p. [Epub ahead of print].

- 49. Jensen, K., et al., *Association of clonal hematopoiesis in DNA repair genes with prostate cancer plasma cell-free DNA testing interference*. *JAMA Oncol*, 2021. 7(1): p. 107-110.

### Figure legends

**Figure 1.** Kaplan–Meier plot of rPFS in **(A)**, Cohort A ctDNA subgroup\*, and **(B)**, Cohort A ITT population<sup>†</sup>. \*Patients with BRCA/ATM-alterations identified by ctDNA testing; <sup>†</sup>Patients with BRCA/ATM-alterations identified by tissue testing.

BRCA/ATM; *BRCA1*, *BRCA2* or *ATM*; ctDNA, circulating tumor DNA; ITT, intention-to-treat; rPFS, radiographic progression-free survival.

Figure 1B from *N Engl J Med*, de Bono J, et al, Olaparib for Metastatic Castration-Resistant Prostate Cancer, Vol. 382, pp. 2091–102, Copyright © 2020

Massachusetts Medical Society. Reprinted with permission from Massachusetts Medical Society.

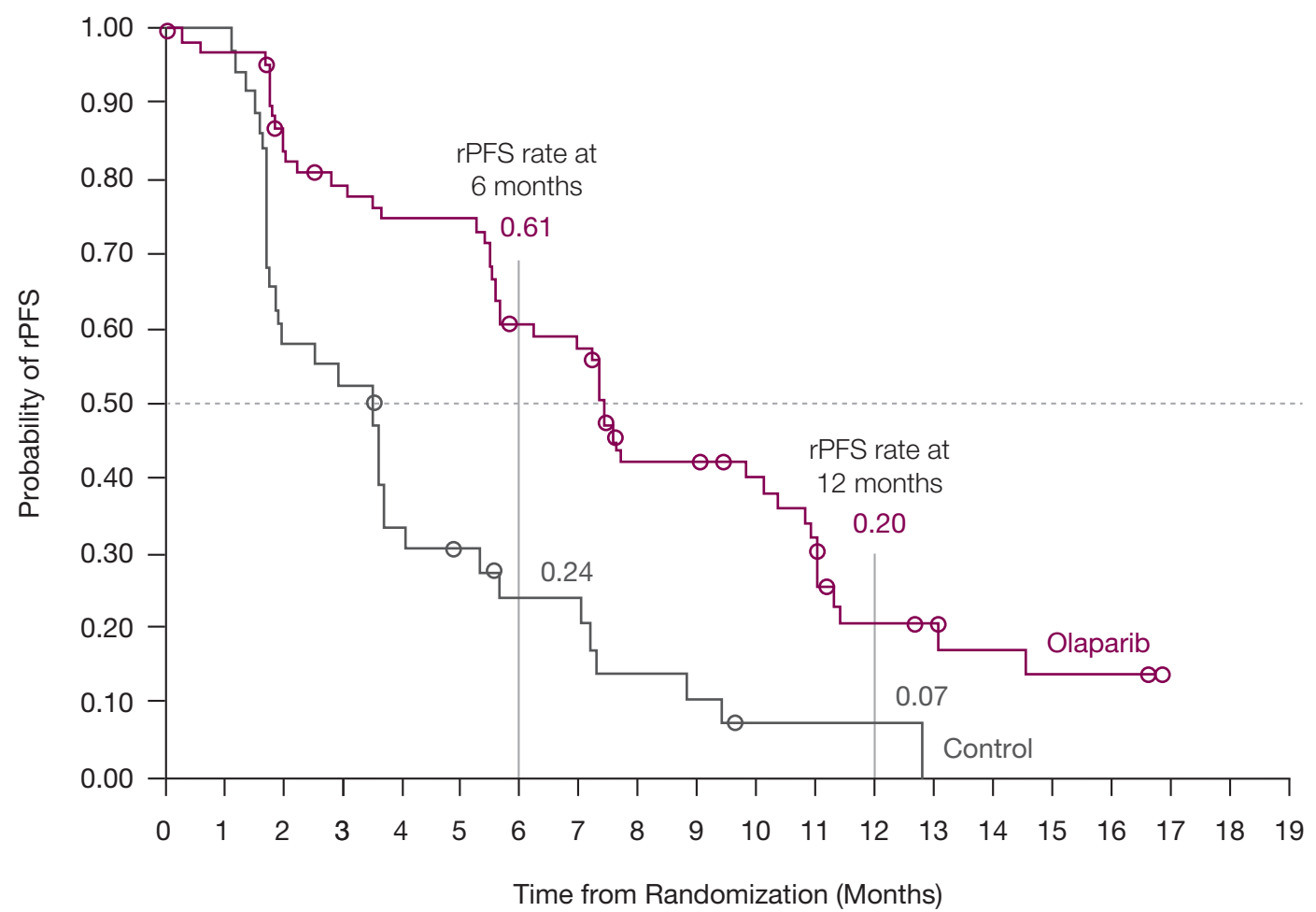
**Figure 2.** Kaplan–Meier plot of OS in **(A)**, Cohort A ctDNA subgroup\*, and **(B)**, Cohort A ITT population<sup>†</sup>. \*Patients with BRCA/ATM-alterations identified by ctDNA testing; <sup>†</sup>Patients with BRCA/ATM-alterations identified by tissue testing. BRCA/ATM; *BRCA1*, *BRCA2* or *ATM*; ctDNA, circulating tumor DNA; ITT, intention-to-treat; OS, overall survival.

Figure 2B from *N Engl J Med*, Hussain M, et al, Survival with Olaparib in Metastatic Castration-Resistant Prostate Cancer, Vol. 383, pp. 2345–57, Copyright © 2020

Massachusetts Medical Society. Reprinted with permission from Massachusetts Medical Society.

Figure 1

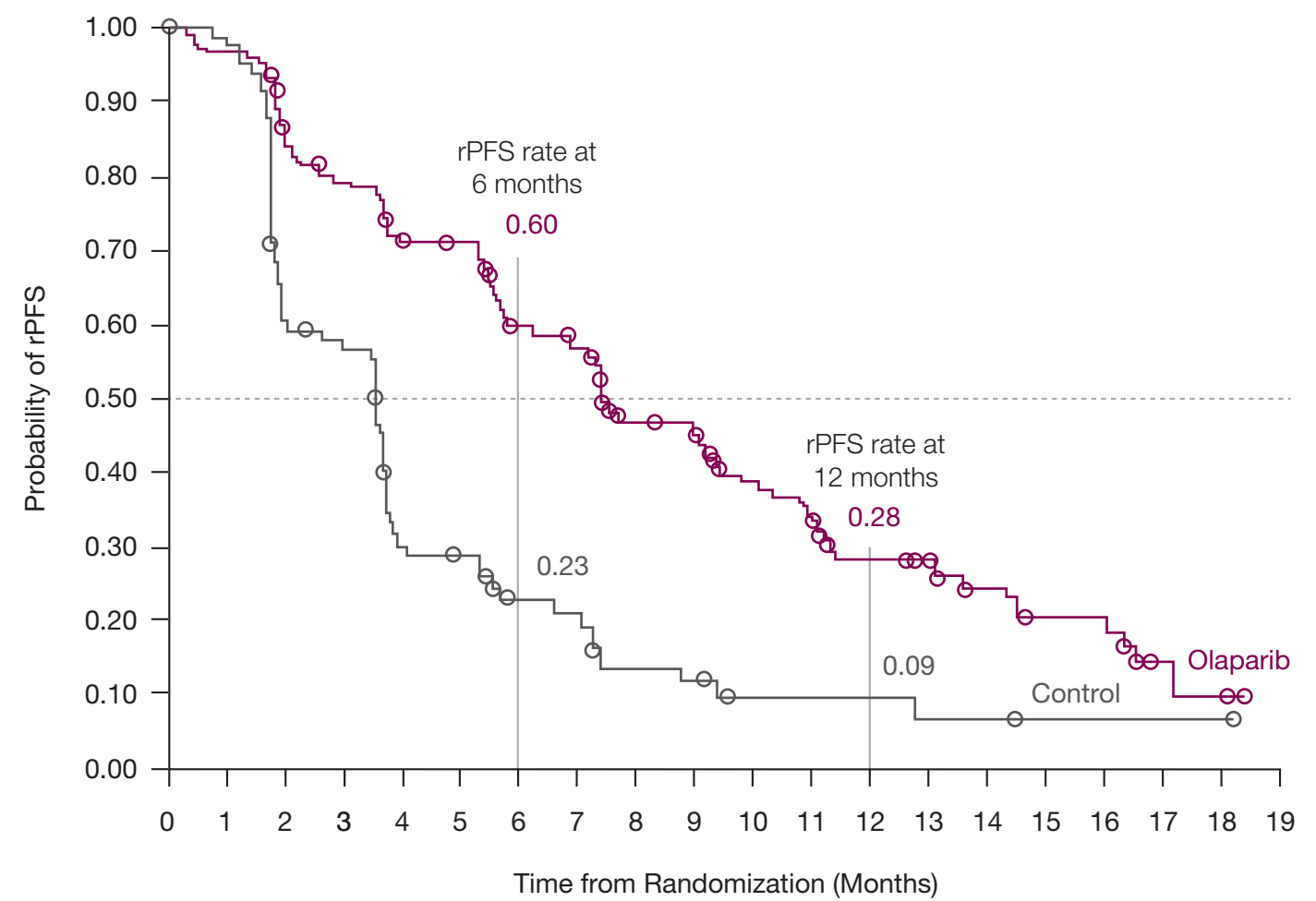
A



No. at risk

|          |    |    |    |    |    |    |    |    |    |    |    |    |   |   |   |   |   |   |   |   |
|----------|----|----|----|----|----|----|----|----|----|----|----|----|---|---|---|---|---|---|---|---|
| Olaparib | 73 | 68 | 57 | 51 | 48 | 48 | 38 | 36 | 23 | 23 | 20 | 16 | 8 | 7 | 5 | 4 | 4 | 0 | 0 | 0 |
| Control  | 38 | 38 | 22 | 20 | 12 | 10 | 7  | 7  | 4  | 3  | 1  | 1  | 1 | 0 | 0 | 0 | 0 | 0 | 0 | 0 |

B

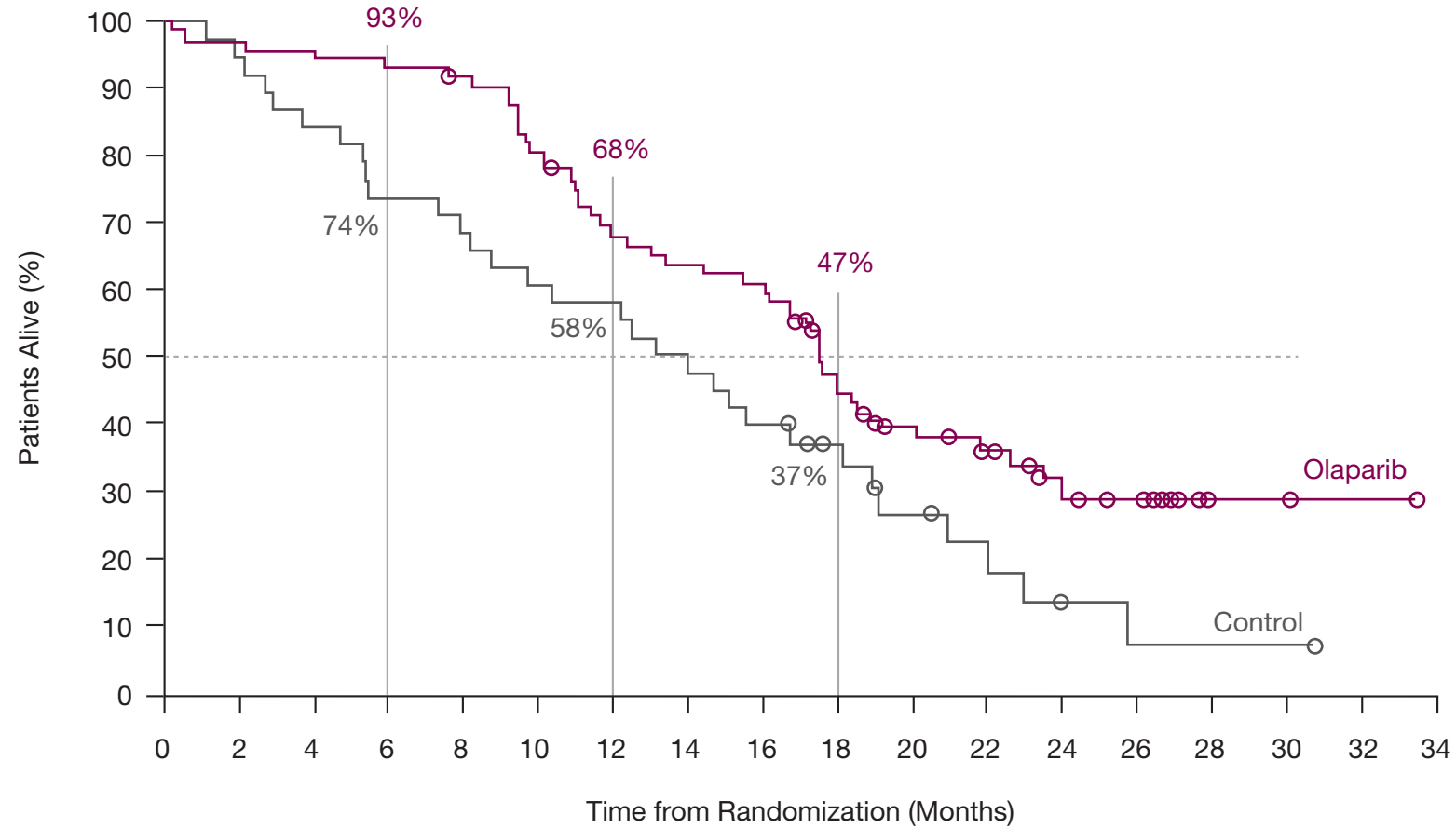


No. at risk

|          |     |     |     |     |     |     |    |    |    |    |    |    |    |    |    |    |    |   |   |   |
|----------|-----|-----|-----|-----|-----|-----|----|----|----|----|----|----|----|----|----|----|----|---|---|---|
| Olaparib | 162 | 149 | 126 | 116 | 102 | 101 | 82 | 77 | 56 | 53 | 42 | 37 | 26 | 24 | 18 | 11 | 11 | 3 | 2 | 0 |
| Control  | 83  | 79  | 47  | 44  | 22  | 20  | 13 | 12 | 7  | 6  | 3  | 3  | 3  | 2  | 2  | 1  | 1  | 1 | 1 | 0 |

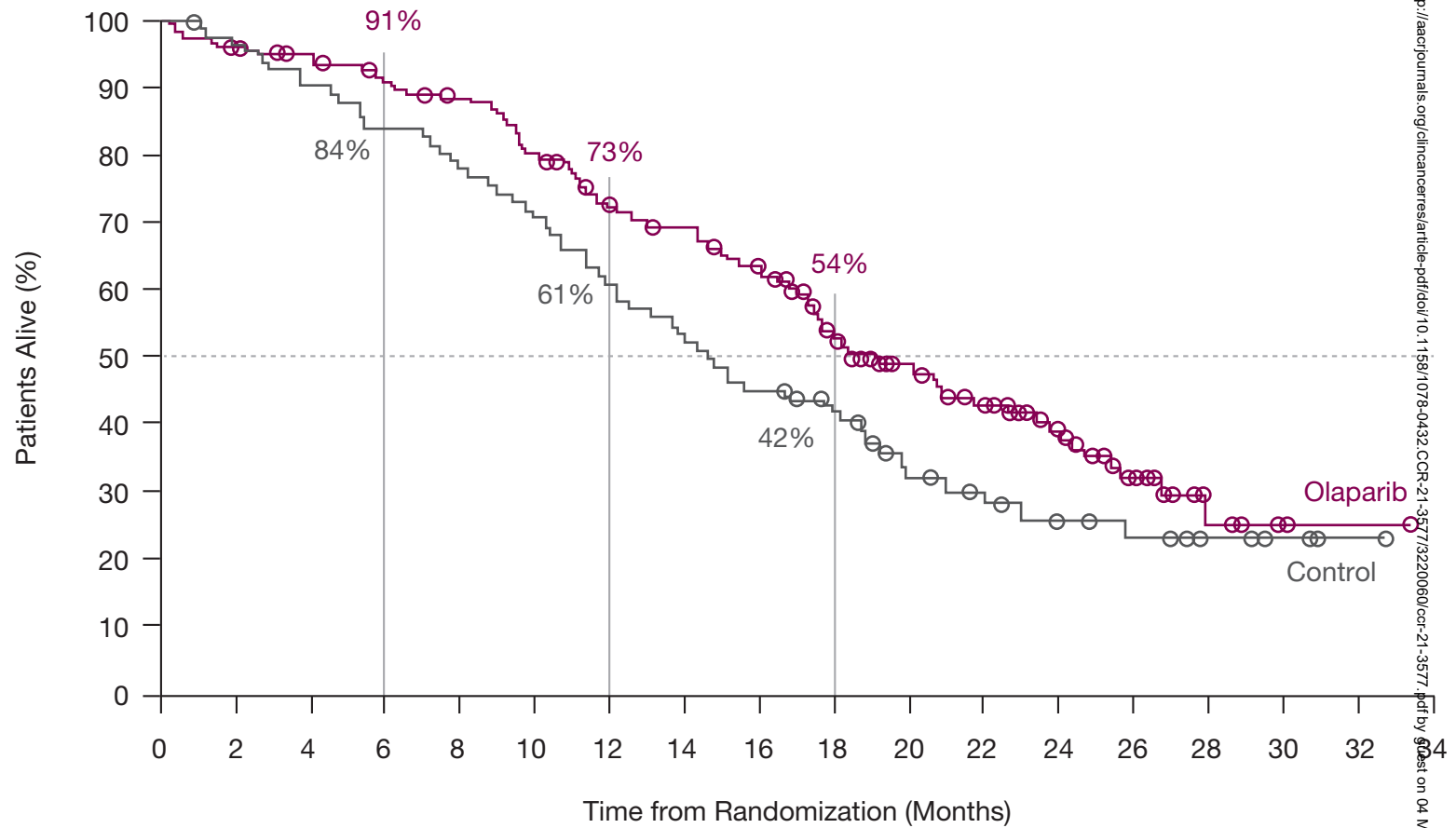
Figure 2

A



| No. at risk | 0  | 2  | 4  | 6  | 8  | 10 | 12 | 14 | 16 | 18 | 20 | 22 | 24 | 26 | 28 | 30 | 32 | 34 |
|-------------|----|----|----|----|----|----|----|----|----|----|----|----|----|----|----|----|----|----|
| Olaparib    | 73 | 71 | 70 | 68 | 66 | 58 | 48 | 45 | 43 | 30 | 22 | 18 | 11 | 9  | 2  | 2  | 0  | 0  |
| Control     | 38 | 36 | 32 | 28 | 26 | 23 | 22 | 18 | 15 | 11 | 7  | 5  | 2  | 1  | 1  | 1  | 0  | 0  |

B



| No. at risk | 0   | 2   | 4   | 6   | 8   | 10  | 12  | 14  | 16 | 18 | 20 | 22 | 24 | 26 | 28 | 30 | 32 | 34 |
|-------------|-----|-----|-----|-----|-----|-----|-----|-----|----|----|----|----|----|----|----|----|----|----|
| Olaparib    | 162 | 155 | 150 | 142 | 136 | 124 | 107 | 101 | 91 | 71 | 56 | 44 | 30 | 18 | 6  | 2  | 1  | 0  |
| Control     | 83  | 79  | 74  | 69  | 64  | 58  | 50  | 43  | 37 | 27 | 18 | 15 | 11 | 9  | 6  | 3  | 1  | 0  |

**Table 1.** Demographics and baseline characteristics of patients in Cohort A ctDNA subgroup and Cohort A ITT population with BRCA/ATM alterations.

|                                | Cohort A ctDNA subgroup <sup>a</sup> |                     | Cohort A ITT population <sup>b</sup> |                     |
|--------------------------------|--------------------------------------|---------------------|--------------------------------------|---------------------|
|                                | Olaparib<br>300 mg bid<br>(n = 73)   | Control<br>(n = 38) | Olaparib<br>300 mg bid<br>(n = 162)  | Control<br>(n = 83) |
| Age, median (years)            | 65.0                                 | 68.5                | 68.0                                 | 67.0                |
| Site of metastases             |                                      |                     |                                      |                     |
| Lymph nodes                    | 46 (63.0)                            | 26 (68.4)           | 94 (58.0)                            | 52 (62.6)           |
| Bone                           | 64 (87.7)                            | 34 (89.5)           | 140 (86.4)                           | 73 (88.0)           |
| Respiratory                    | 18 (24.7)                            | 6 (15.8)            | 30 (18.5)                            | 11 (13.3)           |
| Liver                          | 8 (11.0)                             | 8 (21.1)            | 18 (11.1)                            | 13 (15.7)           |
| Other distant sites            | 17 (23.3)                            | 9 (23.7)            | 34 (21.0)                            | 15 (8.1)            |
| Measurable disease at baseline | 43 (58.9)                            | 21 (55.3)           | 84 (51.9)                            | 43 (51.8)           |
| PSA (µg/L)                     |                                      |                     |                                      |                     |
| n                              | 72                                   | 38                  | 160                                  | 81                  |
| Median                         | 51.65                                | 193.80              | 62.18                                | 112.92              |

|                         |               |               |               |               |
|-------------------------|---------------|---------------|---------------|---------------|
| Range                   | 0.22, 2980.75 | 1.85, 7115.00 | 0.20, 7240.74 | 1.85, 7115.00 |
| ECOG performance status |               |               |               |               |
| 0–1                     | 67 (91.8)     | 36 (94.7)     | 151 (93.2)    | 80 (96.4)     |
| 2                       | 6 (8.2)       | 2 (5.3)       | 11 (6.8)      | 3 (3.6)       |
| Prior taxane use        |               |               |               |               |
| Yes                     | 54 (74.0)     | 25 (65.8)     | 106 (65.4)    | 52 (62.7)     |
| No                      | 19 (26.0)     | 13 (34.2)     | 56 (34.6)     | 31 (37.3)     |

---

Abbreviations: bid, twice daily; BRCA/ATM; BRCA1, BRCA2 or ATM; ctDNA, circulating tumor DNA; ECOG, Eastern Cooperative Oncology

Group; ITT, intention-to-treat; PSA, prostate-specific antigen

Data presented as n (%) unless stated otherwise.

<sup>a</sup>Patients with BRCA/ATM-alterations identified by ctDNA testing; <sup>b</sup>Patients with BRCA/ATM-alterations identified by tissue testing.



**Table 2.** rPFS, OS and ORR in patients from the Cohort A ctDNA subgroup and Cohort A ITT population.

|   | Cohort A ctDNA subgroup <sup>a</sup>       |                             | Cohort A ITT population <sup>b</sup>        |                             |
|---|--|-----------------------------|---|-----------------------------|
|   | Olaparib<br>300 mg bid<br>( <i>n</i> = 73) | Control<br>( <i>n</i> = 38) | Olaparib<br>300 mg bid<br>( <i>n</i> = 162) | Control<br>( <i>n</i> = 83) |
| <b>rPFS</b>   |  |                             |   |                             |
| Events, n (%)   | 49 (67.1)                                  | 34 (89.5)                   | 106 (65.4)                                  | 68 (81.9)                   |
| Median (95% CI), months                               | 7.39 (5.65–10.38)                          | 3.53 (1.77–3.71)            | 7.39 (6.24–9.33)                            | 3.55 (1.91–3.71)            |
| HR (95% CI)   | 0.33 (0.21–0.53)                           |                             | 0.34 (0.25–0.47)                            |                             |
| <i>P</i> value  | < 0.0001 <sup>c</sup>                      |                             | < 0.0001                                    |                             |
| <b>OS<sup>d</sup></b>                                 |  |                             |   |                             |
| Events, n (%)   | 47 (64.4)                                  | 31 (81.6)                   | 91 (56.2)                                   | 57 (68.7)                   |
| Median (95% CI) [months]                              | 17.51 (15.47–20.11)                        | 13.59 (8.21–18.10)          | 19.1 (17.4–23.4)                            | 14.7 (11.9–18.8)            |
| HR (95% CI)   | 0.58 (0.37–0.92)                           |                             | 0.69 (0.50–0.97)                            |                             |
| <i>P</i> value  | 0.0100 <sup>a</sup>                        |                             | 0.0200                                      |                             |
| <b>Confirmed ORR by BICR</b>                          |  |                             |   |                             |
| Objective responders/total<br>number of patients with | 17/43 (39.5)                               | 1/21 (4.8)                  | 28/84 (33.3)                                | 1/43 (2.3)                  |

measurable disease at

baseline, n (%)

Odds ratio (95% CI)

13.17 (2.37–247.69)

20.86 (4.18–379.18)

*P* value

0.0013<sup>a</sup>

< 0.0001

---

Abbreviations: bid, twice daily; BICR, blinded independent central review; BRCA/*ATM*; *BRCA1*, *BRCA2* or *ATM*; CI, confidence interval; ctDNA, circulating tumor DNA; ITT, intention-to-treat; ORR, objective response rate; OS, overall survival; rPFS, radiographic progression-free survival.

<sup>a</sup>Patients with BRCA/*ATM*-alterations identified by ctDNA testing; <sup>b</sup>Patients with BRCA/*ATM*-alterations, identified by tissue testing; <sup>c</sup>*P* values are two-sided nominals for Cohort A ctDNA; <sup>d</sup>Not adjusted for crossover