

Announcements

(Requests for announcements must be received at least 3 months before publication.)

AACR SPECIAL CONFERENCES IN CANCER RESEARCH

A number of meetings are now being organized in the AACR's new series of smaller scientific meetings. The topics, dates, locations, and program committees for these meetings are given below. When full details of each meeting are available, AACR members will be the first to receive complete brochures and application forms for participation in these important conferences. Nonmembers may receive this information by sending their names and addresses to Meetings Mailing List, AMERICAN ASSOCIATION FOR CANCER RESEARCH, Public Ledger Building, 6th & Chestnut Streets, Suite 816, Philadelphia, PA 19106.

CHROMOSOMAL AND GROWTH FACTOR ABNORMALITIES IN LEUKEMIA

October 14-18, 1990

Chatham Bars Inn, Chatham (Cape Cod), MA

Organizers

Janet D. Rowley, University of Chicago, Chicago, IL
Peter C. Nowell, University of Pennsylvania School of Medicine,
Philadelphia, PA

Donald Metcalf, Walter & Eliza Hall Institute, Melbourne, Australia
Leo Sachs, The Weizmann Institute of Science, Rehovot, Israel

DEVELOPMENTAL GENETICS OF CHILDHOOD CANCER

February 8-12, 1991

San Diego, CA

Organizers

Alfred G. Knudson, Jr., Fox Chase Cancer Center, Philadelphia, PA
(Chairperson)

Garrett M. Brodeur, Washington University Medical School,
St. Louis, MO

Webster K. Cavenee, Ludwig Institute for Cancer Research,
Montreal, Quebec, Canada

Stephen Friend, Massachusetts General Hospital, Charlestown, MA

George F. Vande Woude, NCI-Frederick Cancer Research Facility,
Frederick, MD

MEMBRANE TRANSPORT IN MULTIDRUG RESISTANCE, DEVELOPMENT, AND DISEASE

March 10-14, 1991

Banff Centre, Banff, Alberta, Canada

Organizers

Susan B. Horwitz, Albert Einstein College of Medicine, Bronx, NY
(Co-Chairperson)

Victor Ling, Ontario Cancer Institute, Toronto, Ontario, Canada
(Co-Chairperson)

Giovanna F.-L. Ames, University of California, Berkeley, CA

Anna Maria Casazza, Bristol-Myers Company, Wallingford, CT

Phillipe Gros, McGill University, Montreal, Quebec, Canada

John Riordan, Hospital for Sick Children, Toronto, Ontario, Canada

CALENDAR OF EVENTS

Current Controversies in Colon and Rectal Cancer, November 3, 1990, Sheraton Imperial Hotel, Research Triangle Park, North Carolina. CME and CEU credit will be available. Contact: Nancy Barnes, Office of Continuing Medical Education, Campus Box #7000, University of North Carolina at Chapel Hill, Chapel Hill, NC 27599. Telephone (919) 962-2118.

Thirteenth Annual San Antonio Breast Cancer Symposium, November 2-3, 1990. Contact: Lois Dunnington, Symposium Coordinator, 4450 Medical Drive, San Antonio, TX 78229. Telephone: (512) 567-4745.

Lung Cancer 1990, November 9-10, 1990, Four Seasons Hotel, Boston, Massachusetts. Course Directors: Paul Hesketh, MD, and Sam Bernal, MD. Fee: \$250. Credits: 15. Contact: Maryjane Nolan, Department of Continuing Medical Education, Boston University School of Medicine, 80 East Concord Street, Boston, MA 02118-2394. Telephone: (617) 638-4605.

Fourth International Symposium of Neutron Capture Therapy, December 4-7, 1990, Sydney, Australia. Contact: Rolf F. Barth, Ohio State University, 4170 Graves Hall, 333 West 10th Avenue, Columbus, OH 43210-1239. Telephone: (614) 292-4471.

NEGATIVE CONTROLS ON CELL GROWTH AND THEIR BREAKDOWN DURING THE PATHOGENESIS OF CANCER

(tentative topic)

October 20-24, 1991

Chatham Bars Inn, Chatham (Cape Cod), MA

Chairperson

Robert A. Weinberg, Whitehead Institute for Biomedical Research,
Cambridge, MA

MOLECULAR MECHANISMS AND CONCEPTS FOR MULTISTAGE CARCINOGENESIS

(tentative topic)

(Joint Meeting with European Association for Cancer Research)

November 7-9, 1991

Italy

Chairpersons

I. Bernard Weinstein, Columbia University College of Physicians &
Surgeons, New York, NY

Peter Bannasch, German Cancer Research Center, Heidelberg, FRG

FUTURE ANNUAL MEETINGS OF THE AMERICAN ASSOCIATION FOR CANCER RESEARCH

1991 May 15-18 Houston, Texas

1992 May 20-23 San Diego, California

1993 May 19-22 Orlando, Florida

1994 May 11-14 Dallas, Texas

AMERICAN CANCER SOCIETY RESEARCH GRANTS IN PRIMARY PREVENTION AND DETECTION

The American Cancer Society is expanding its research program in psychosocial and behavioral aspects of cancer to include primary prevention and detection. Investigators are encouraged to submit research and clinical grant proposals, and requests for support of personnel in research (Postdoctoral Fellowships, Physician's Research Training Fellowships, Junior Faculty Research Awards, Faculty Research Awards, and Scholar Awards) in these areas. Applications will be peer-reviewed by the Scientific Advisory Committee on Psychosocial and Behavioral Research in competition with other applications assigned to this Committee. Funding will be based primarily on the scientific merit of the proposal and relevance of the project to the Society's mission. Applications should be designed to test a well-defined hypothesis using rigorous, state of the art methodology.

Deadlines for receipt of applications for Research and Clinical Investigation Grants are April 1 and November 1. For Grants in Support of Personnel for Research they are March 1 and October 1.

Brochures describing these programs are available upon request from: American Cancer Society, Inc., Research Department, 1599 Clifton Road, N.E., Atlanta, GA 30329. Tel: (404) 329-7558.

Uro-Oncology Update 1991, January 12, 1991, The Ritz-Carlton Hotel, Boston, Massachusetts. Course Directors: Richard K. Babayan, MD, and Paul J. Hesketh, MD. Fee: \$75. Credits: 4. Contact: Maryjane Nolan, Department of Continuing Medical Education, Boston University School of Medicine, 80 East Concord Street, Boston, MA 02118-2394. Telephone: (617) 638-4605.

Oncogenic Mechanisms in Radiation-induced Cancer, January 16–19, 1991, Holiday Inn University Park, Fort Collins, Colorado. Deadline for registration: October 15, 1990. Contact: Dr. M. M. Elkind, Chairman, Kettering/RRS Workshop, Department of Radiology & Radiation Biology, Colorado State University, Fort Collins, CO 80523.

International Meeting of the Electrophoresis Societies, March 19–21, 1991, Sheraton Washington Hotel, Washington, DC. Deadline for submission of abstracts: September 1, 1990. Contact: Janet E. Cunningham, International Electrophoresis Society, c/o Barr Enterprises, P.O. Box 279, Walkersville, MD 21793. Telephone: (301) 898-3772. FAX: (301) 898-5596.

First International Symposium on Hormonal Carcinogenesis, March 19–23, 1991, Hyatt Regency Cancun, Cancun, Mexico. Contact: Dr. Jonathan J. Li, Hormonal Carcinogenesis Laboratory, Wegner Hall, School of Pharmacy, Washington State University, Pullman, WA 99164-6510.

Eighth International Symposium of Preparative Chromatography, May 13–15, 1991, Key Bridge Marriott Hotel, Arlington, VA. Chairman: Professor Georges Guiochon. Deadline for submission of abstracts: November 15, 1990. Contact: Janet E. Cunningham, International Electrophoresis Society, c/o Barr Enterprises, P.O. Box 279, Walkersville, MD 21793. Telephone: (301) 898-3772. FAX: (301) 898-5596.

Eleventh International Symposium on HPLC of Proteins, Peptides, and Polynucleotides, October 20–23, 1991, Sheraton Washington Hotel, Washington, DC. Deadline for submission of abstracts: June 3, 1991. Contact: Janet E. Cunningham, International Electrophoresis Society, c/o Barr Enterprises, P.O. Box 279, Walkersville, MD 21793. Telephone: (301) 898-3772. FAX: (301) 898-5596.

Errata

We were recently informed about a typographical error in the article by A. W. Tong *et al.*, entitled “Elimination of Chemoresistant Multiple Myeloma Clonogenic Colony-forming Cells by Combined Treatment with a Plasma Cell-reactive Monoclonal Antibody and a P-Glycoprotein-reactive Monoclonal Antibody,” (*Cancer Res.*, 49: 4829–4834, September 1, 1989). On page 4830, the first line after the equation in the right-hand column should read: “where $X_0 = \ln$ initial dose = $\ln 10^{-1}$ ” instead of “where $X_0 = \ln$ initial dose = $\ln 10$.”

In two articles in the March 15, 1990 issue of *Cancer Research* by N. Kaneda (N. Kaneda *et al.*, “Metabolism and Pharmacokinetics of the Camptothecin Analogue CPT-11 in the Mouse,” *Cancer Res.*, 50: 1715–1720, 1990) and N. Kaneda and T. Yokokura, “Nonlinear Pharmacokinetics of CPT-11 in Rats,” *Cancer Res.*, 50: 1721–1725, 1990, the structures of CPT-11, SN-38, and CPT depicted in Figure 1 of each paper were not accurate. The correct structures are printed below.

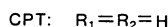
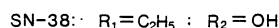
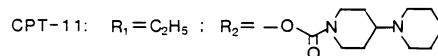
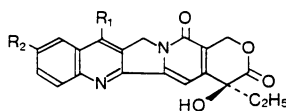


Fig. 1. Structures of CPT-11, SN-38, and CPT.